

# V&V Reference Report

## L2 ASCDS Version : 8.4.5

Observation 530 - L2 Version 3  
Chandra X-Ray Center

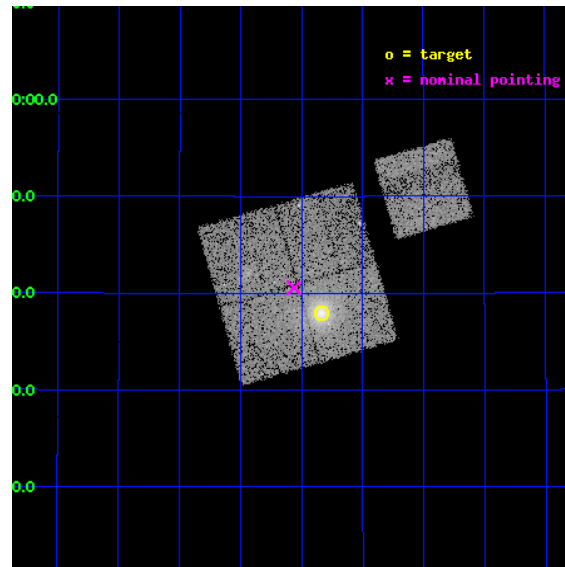
L2 Processing Date : Sep 1 2012

## Contents

<b>1</b>	<b>Front</b>	<b>2</b>
<b>2</b>	<b>OBI</b>	<b>3</b>
2.1	OBI . . . . .	3
2.1.1	Images . . . . .	3
2.1.2	Bias . . . . .	3
2.1.3	Parameters . . . . .	4
2.1.4	Events . . . . .	4
2.2	Compared Parameters . . . . .	5
2.3	Aspect . . . . .	6
2.4	Star Slots . . . . .	9
2.4.1	Slot 3 . . . . .	9
2.4.2	Slot 4 . . . . .	10
2.4.3	Slot 5 . . . . .	11
2.4.4	Slot 6 . . . . .	12
2.4.5	Slot 7 . . . . .	13
2.5	FID Slots . . . . .	14
2.5.1	Slot 0 . . . . .	14
2.5.2	Slot 1 . . . . .	15
2.5.3	Slot 2 . . . . .	16
<b>A</b>	<b>Summary</b>	<b>17</b>
A.1	Status . . . . .	17
A.2	Comments . . . . .	17

# 1 Front

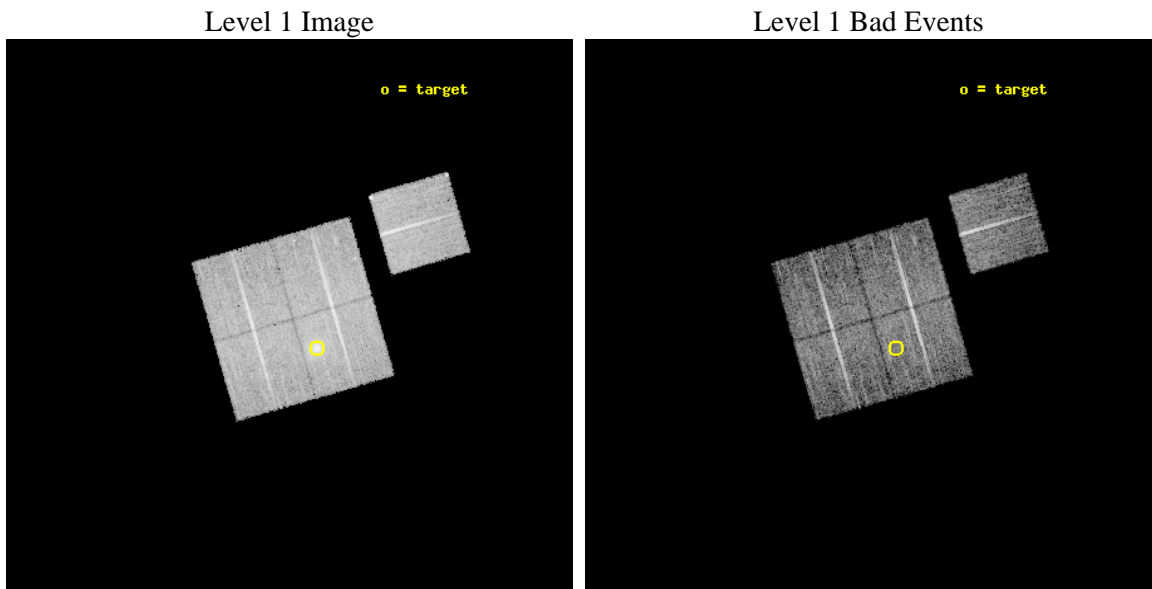
seq_num	800038	Sequence number
obs_id	530	Observation id
title	DETERMINATION OF H0/Q0	Proposal title
observer	DR. LEON VANSPEYBROECK	Principal investigator
object	A586	Source name
dtcycle	0	&#160
cycle	P	events from which exps? Prim/Second/Both
ra_targ	113.083133	Observer's specified target RA [deg]
dec_targ	31.633403	Observer's specified target Dec [deg]
ra_nom	113.14074755629	Nominal RA [deg]
dec_nom	31.675857525406	Nominal Dec [deg]
roll_nom	73.938193888351	Nominal Roll [deg]
revision	3	Processing version of data
ontime	10172.800009459	Sum of GTIs [s]
livetime	10043.985890415	Livetime [s]
ontime0	10169.559049234	Sum of GTIs [s]
ontime1	10172.800009459	Sum of GTIs [s]
ontime2	10172.800009459	Sum of GTIs [s]
ontime3	10172.800009459	Sum of GTIs [s]
ontime6	10172.800009459	Sum of GTIs [s]
l2events	52364	Number of level 2 events



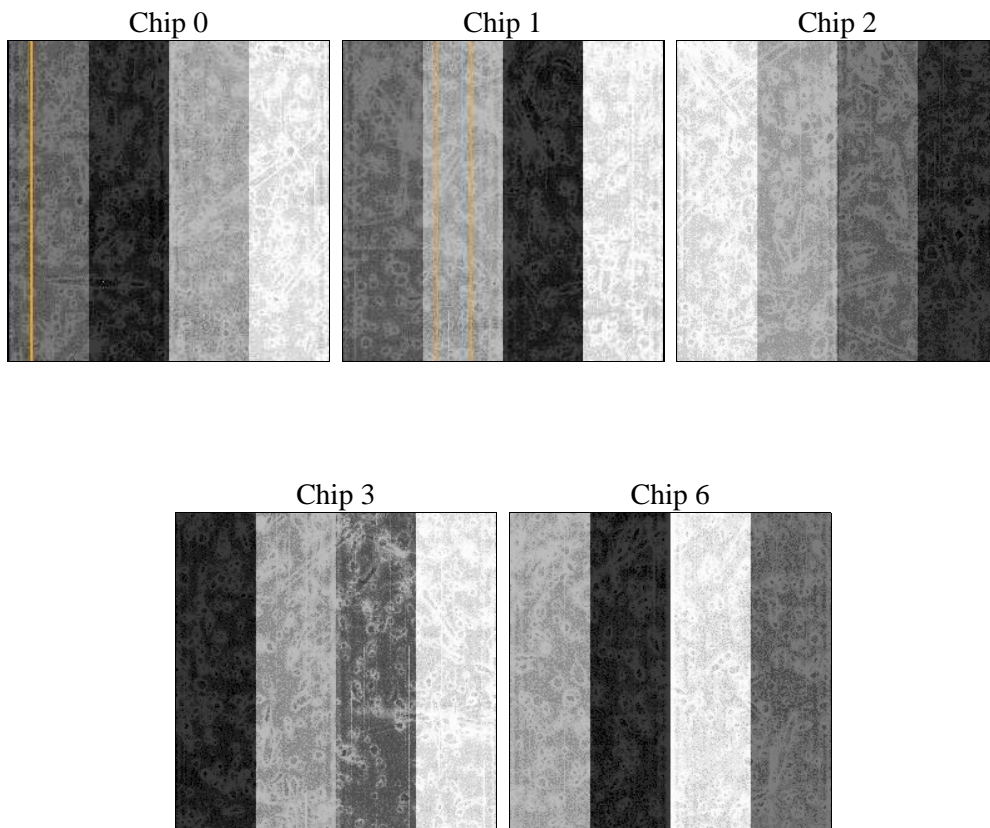
## 2 OBI

### 2.1 OBI

#### 2.1.1 Images



#### 2.1.2 Bias



### 2.1.3 Parameters

obi_num	0	Obi number	sched_exp_time	10000.000000	[s] Scheduled observation exposure time
ascdsver	8.4.5	Processing system revision	ontime	10172.800009459	Sum of GTIs [s]
caldbver	4.5.1.1	&#160	ontime0	10169.559049234	Sum of GTIs [s]
date	2012-09-01T14:33:52	Date and time of file creation	ontime1	10172.800009459	Sum of GTIs [s]
revision	3	Processing version of data	ontime2	10172.800009459	Sum of GTIs [s]
			ontime3	10172.800009459	Sum of GTIs [s]
			ontime6	10172.800009459	Sum of GTIs [s]
			l1events	342720	Number of level 1 events

### 2.1.4 Events

	ccd 0	ccd 1	ccd 2	ccd 3	ccd 6
level 1 events	62508	65393	68222	77836	68761
rejected events	52311	54572	58395	58741	57897
rejected %	83%	83%	85%	75%	84%

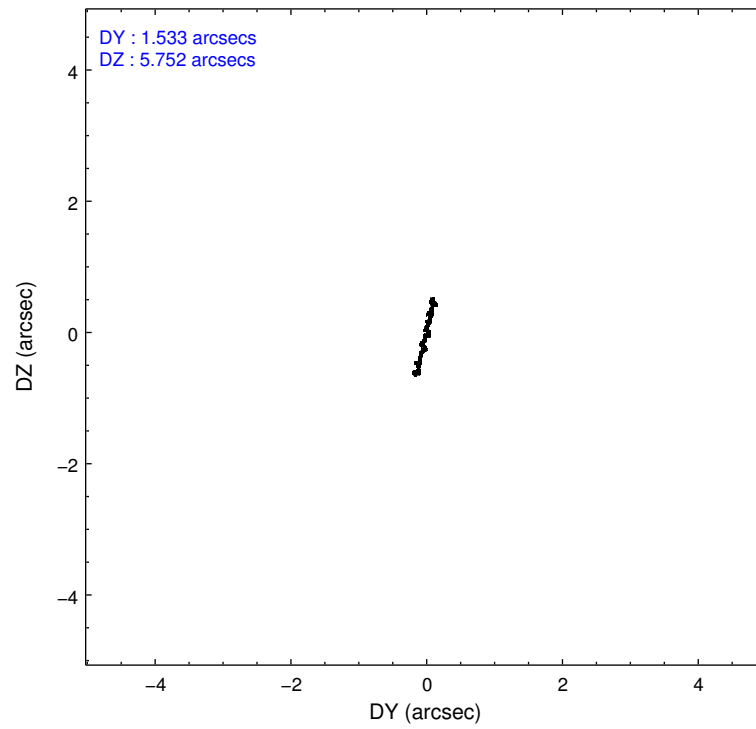
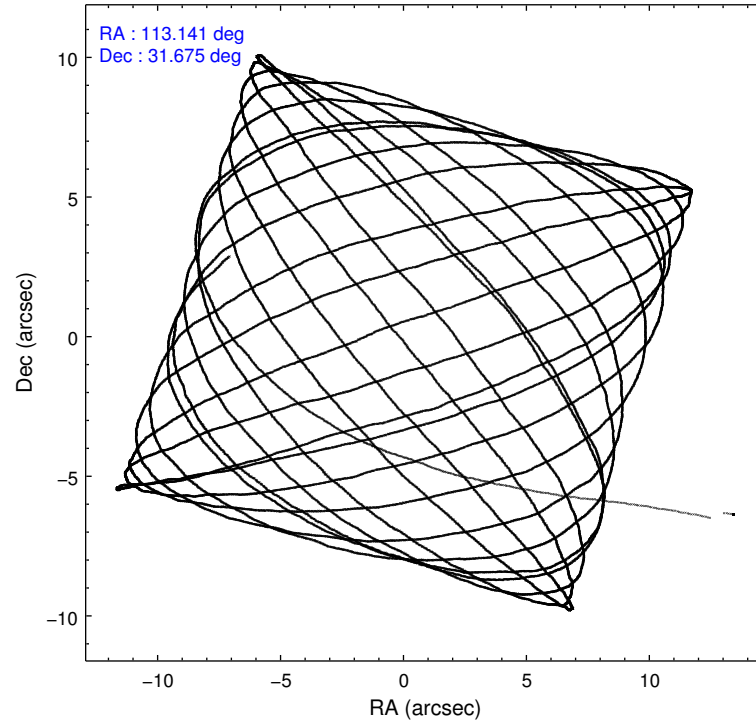
	ccd 0	ccd 1	ccd 2	ccd 3	ccd 6
grade 0 events	4859	4962	4622	12127	5567
	7%	7%	6%	15%	8%
grade 1 events	35	36	22	64	55
	0%	0%	0%	0%	0%
grade 2 events	2375	2604	2238	3253	2212
	3%	3%	3%	4%	3%
grade 3 events	778	827	672	1018	720
	1%	1%	0%	1%	1%
grade 4 events	678	818	768	941	763
	1%	1%	1%	1%	1%
grade 5 events	2075	2245	2063	2365	2403
	3%	3%	3%	3%	3%
grade 6 events	1714	1856	1705	2053	1793
	2%	2%	2%	2%	2%
grade 7 events	49994	52045	56132	56015	55248
	79%	79%	82%	71%	80%

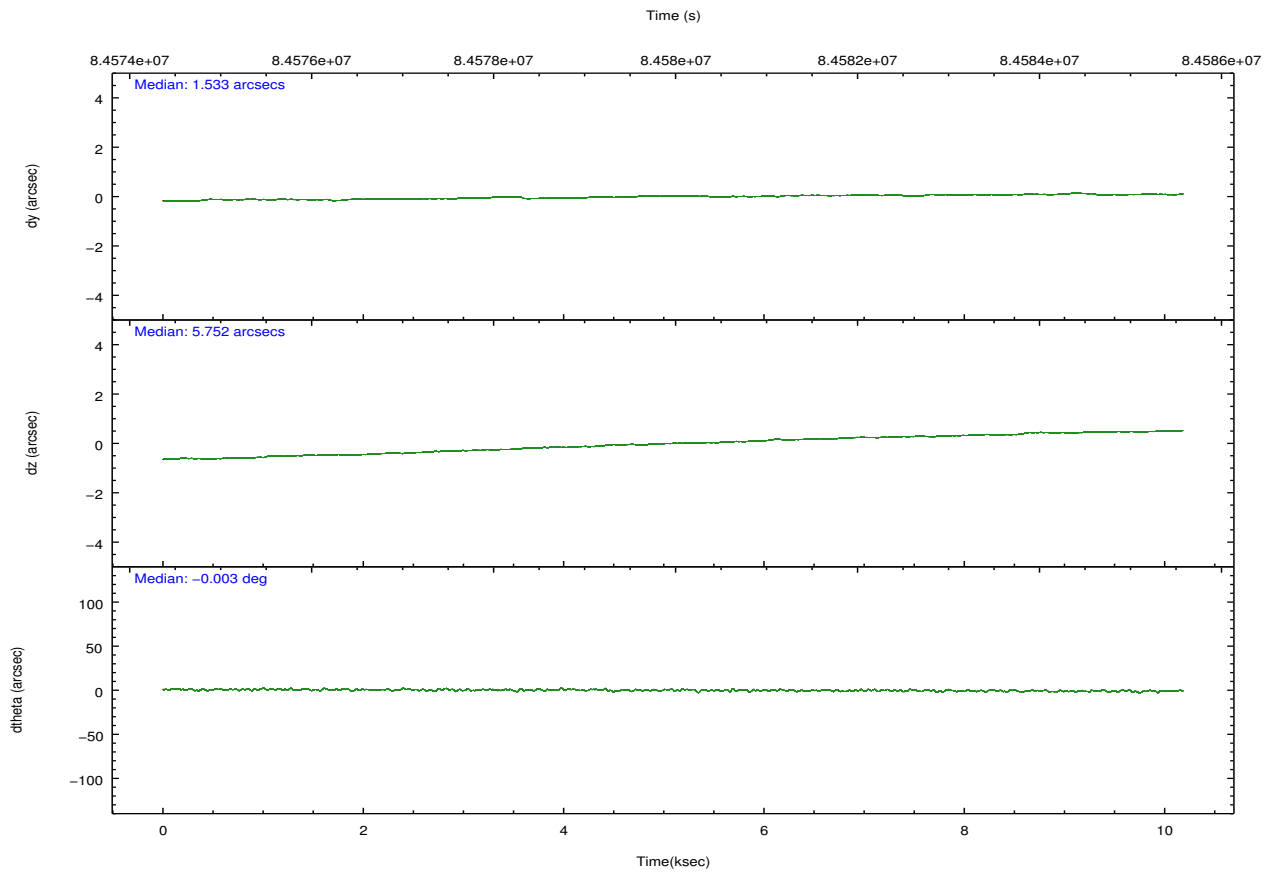
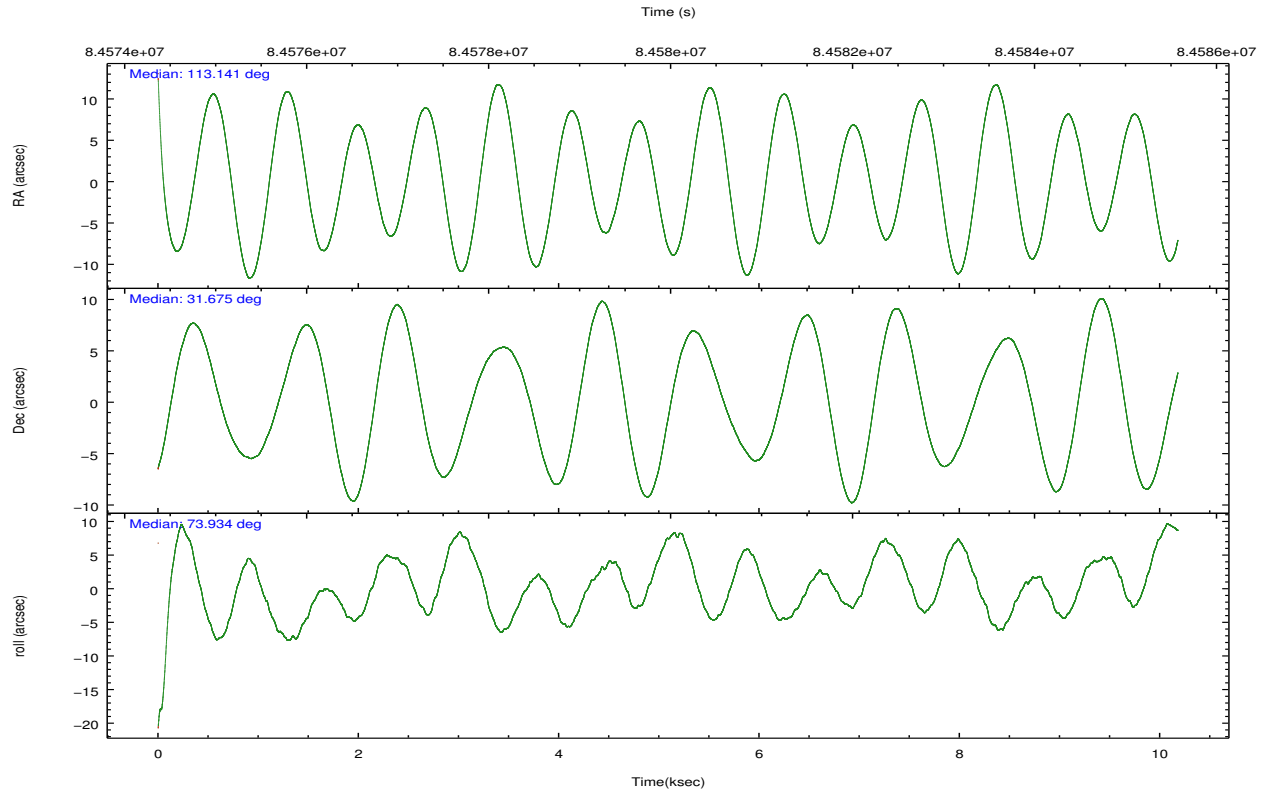


## 2.2 Compared Parameters

Parameter	Planned	Actual	Parameter	Planned	Actual
Instrument	ACIS	ACIS	Obspar format version number	7	7
Detector	ACIS-01236	ACIS-01236	Obspar file type	PREDICTED	ACTUAL
Grating	NONE	NONE	Obspar update status	NONE	UPDATED
Data mode	VFAINT	VFAINT	Number of optional ACIS chips dropped	0	0
Observation mode	POINTING	POINTING	On-chip summing requested	N	N
[deg] Pointing RA	113.148471	113.1407475562877	Subarray requested	NONE	NONE
[deg] Pointing Dec	31.649130	31.67585752540614	Alternating exposures requested	N	N
[deg] Pointing Roll	73.725470	73.93819388835057	[s] Primary exposure time	0.000000	3.2
[mm] SIM focus pos	-0.782348	-0.7809083437167272			
[mm] SIM defocus	0	0.001439871863259334			
[mm] SIM translation stage pos	-236.532463	-236.5241547330508			
[mm] SIM translation stage offset	2.94	2.931701730121091			
[s] Observation start time (MET)	84575063.184000	84573963.929882			
Observation start date	2000-09-05T21:03:19	2000-09-05T20:46:03			
[s] Observation end time (MET)	84585063.184000	84585793.96782599			
Observation end date	2000-09-05T23:49:59	2000-09-06T00:03:13			
Read mode	TIMED	TIMED			

## 2.3 Aspect



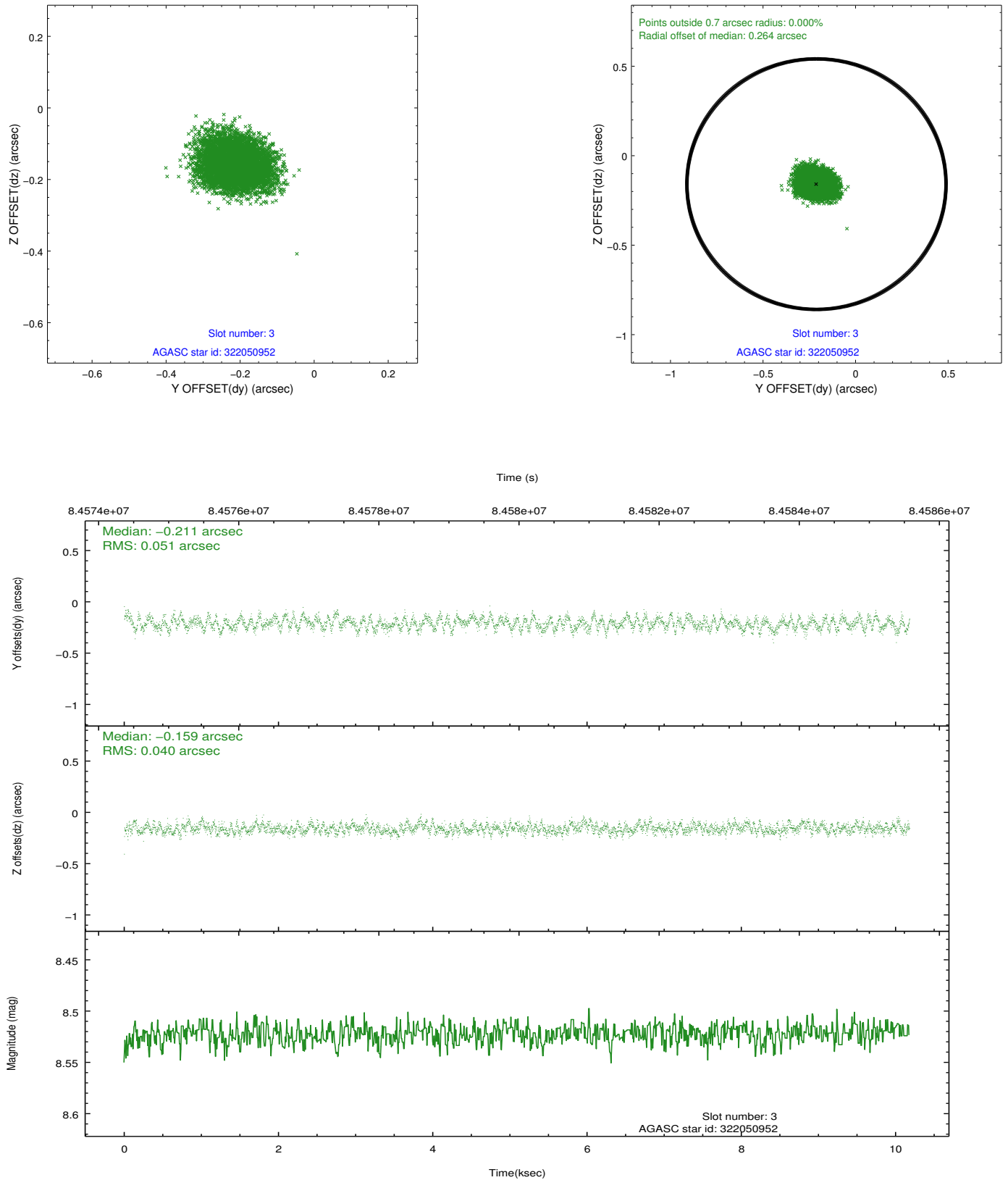


### Slot Statistics

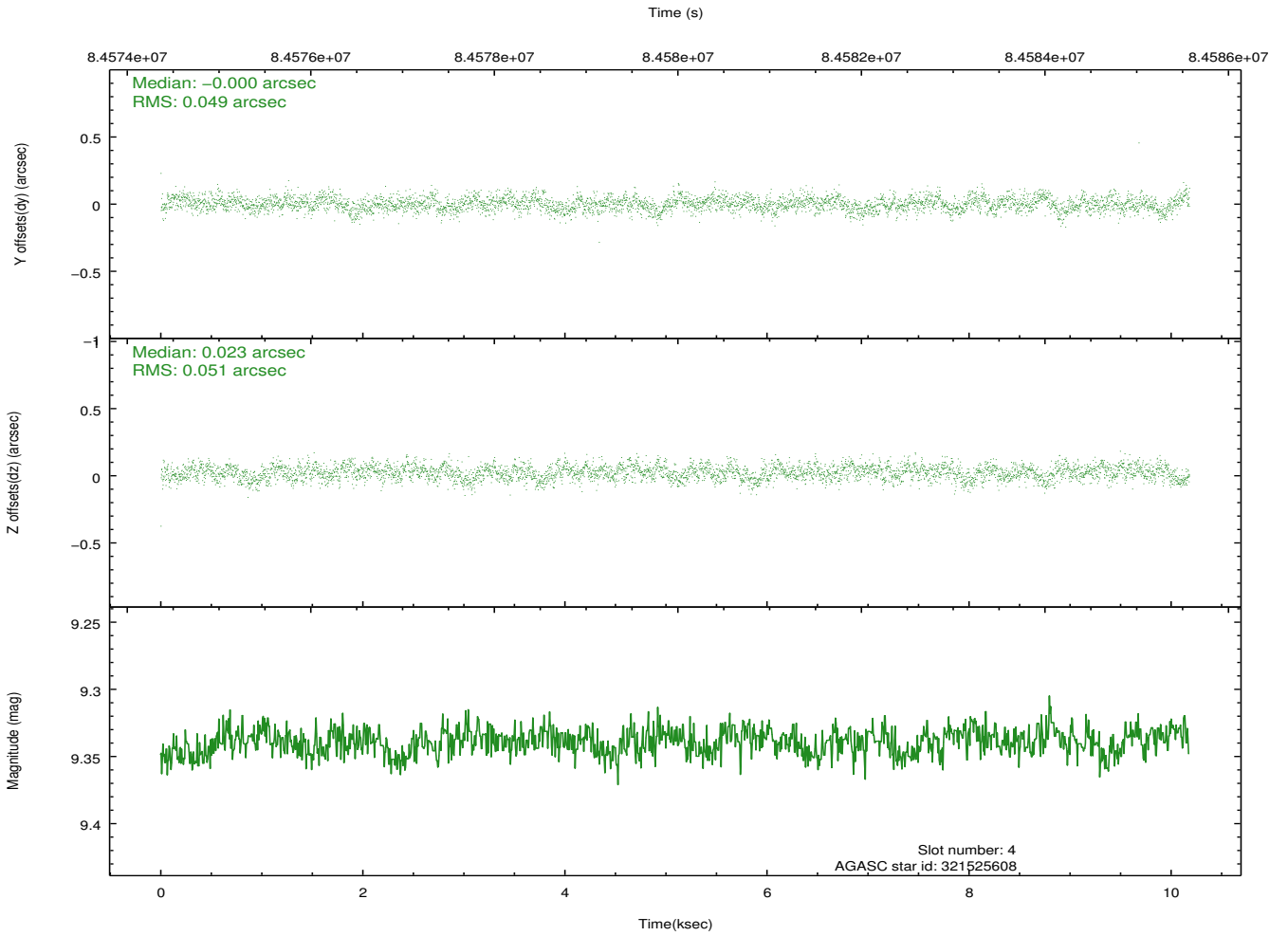
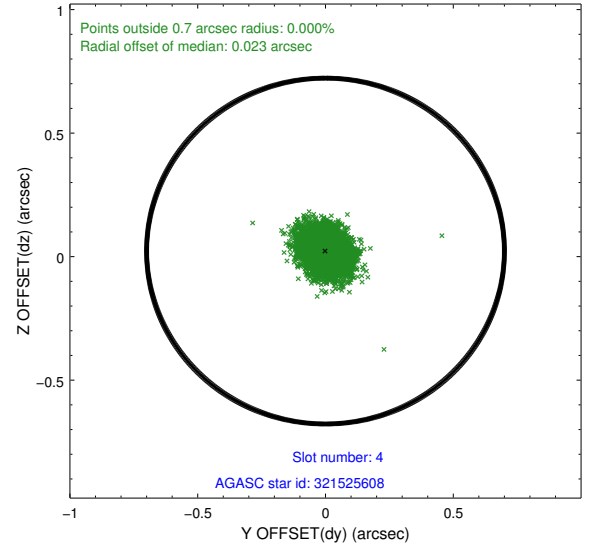
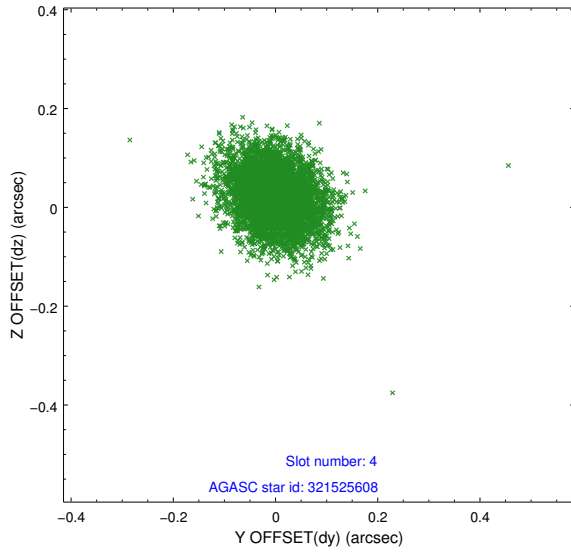
slot	status	id	mag	n_pts	med_dy	med_dz	dr1	dr2	ra	dec	mean_y	mean_z
0	FID	ACIS-I-2	7.14	2484	-0.038	-0.009	0.010	0.017	0.000000	0.000000	-755.68	-775.52
1	FID	ACIS-I-4	7.21	2483	-0.024	0.005	0.008	0.013	0.000000	0.000000	2158.16	1130.47
2	FID	ACIS-I-6	7.26	2483	-0.038	0.068	0.013	0.021	0.000000	0.000000	404.89	1773.66
3	GUIDE	322050952	8.52	4964	-0.211	-0.159	0.070	0.110	112.842649	31.961208	819.30	1211.79
4	GUIDE	321525608	9.34	4965	-0.000	0.023	0.076	0.121	113.158985	31.352321	-1014.83	-330.24
5	GUIDE	321523680	9.39	4966	0.136	-0.104	0.081	0.135	112.624598	31.528905	-860.83	1422.72
6	GUIDE	321520736	9.25	4966	-0.010	0.076	0.069	0.114	113.387072	31.695033	365.70	-654.61
7	GUIDE	321526608	9.41	4964	0.084	0.165	0.087	0.142	113.645995	31.201137	-1113.60	-1921.65

## 2.4 Star Slots

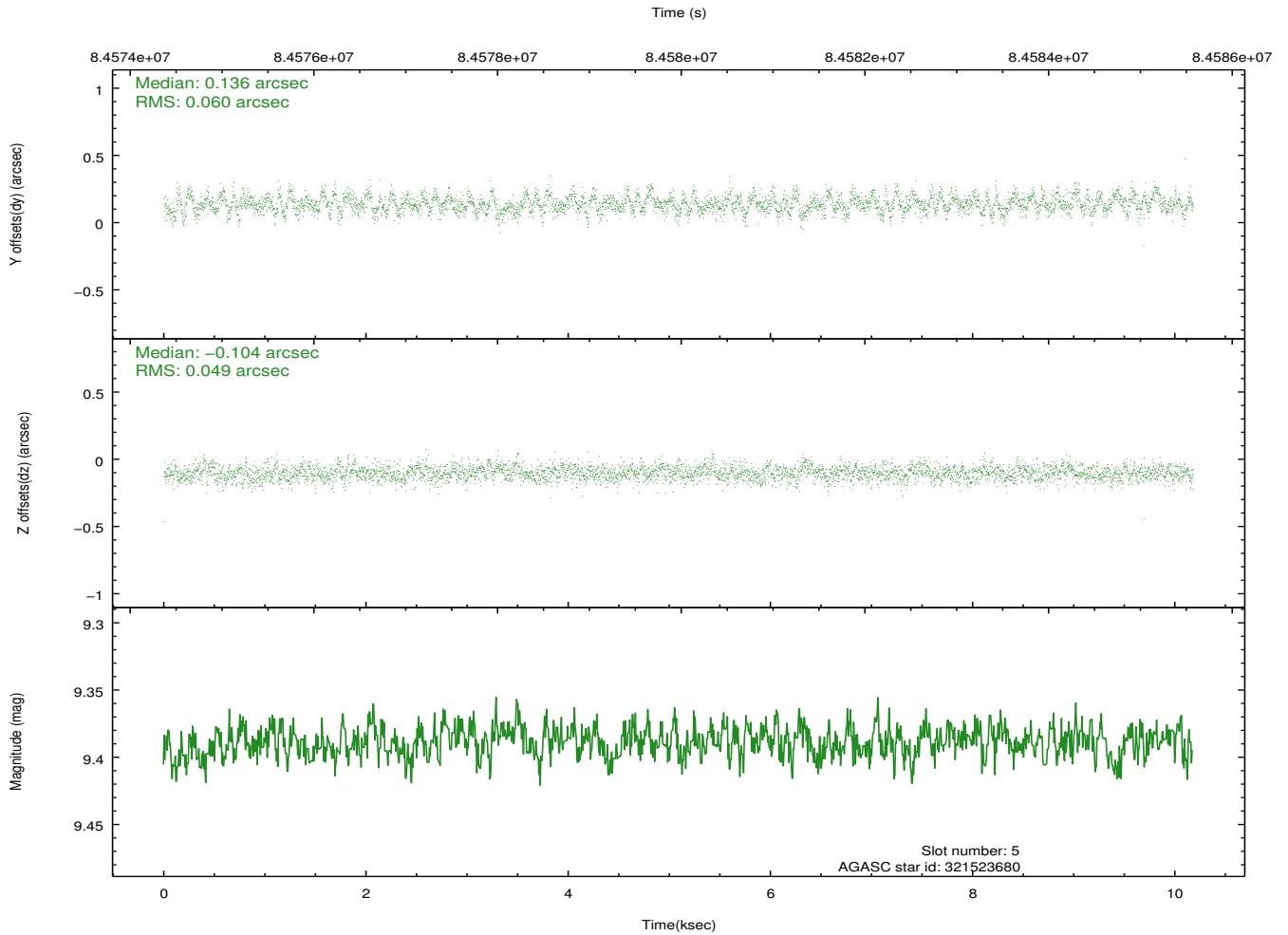
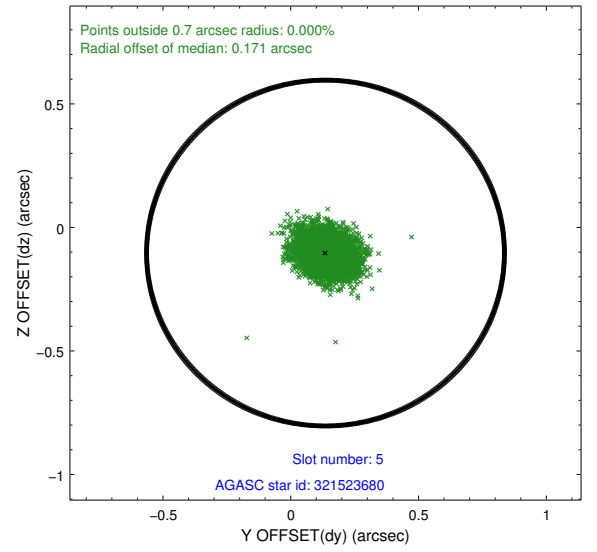
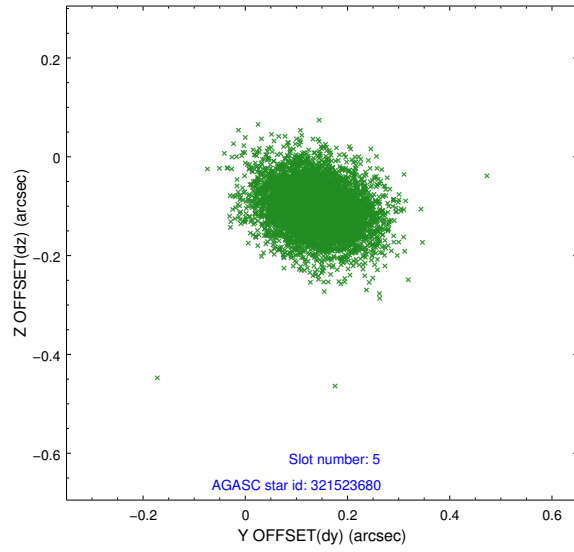
### 2.4.1 Slot 3



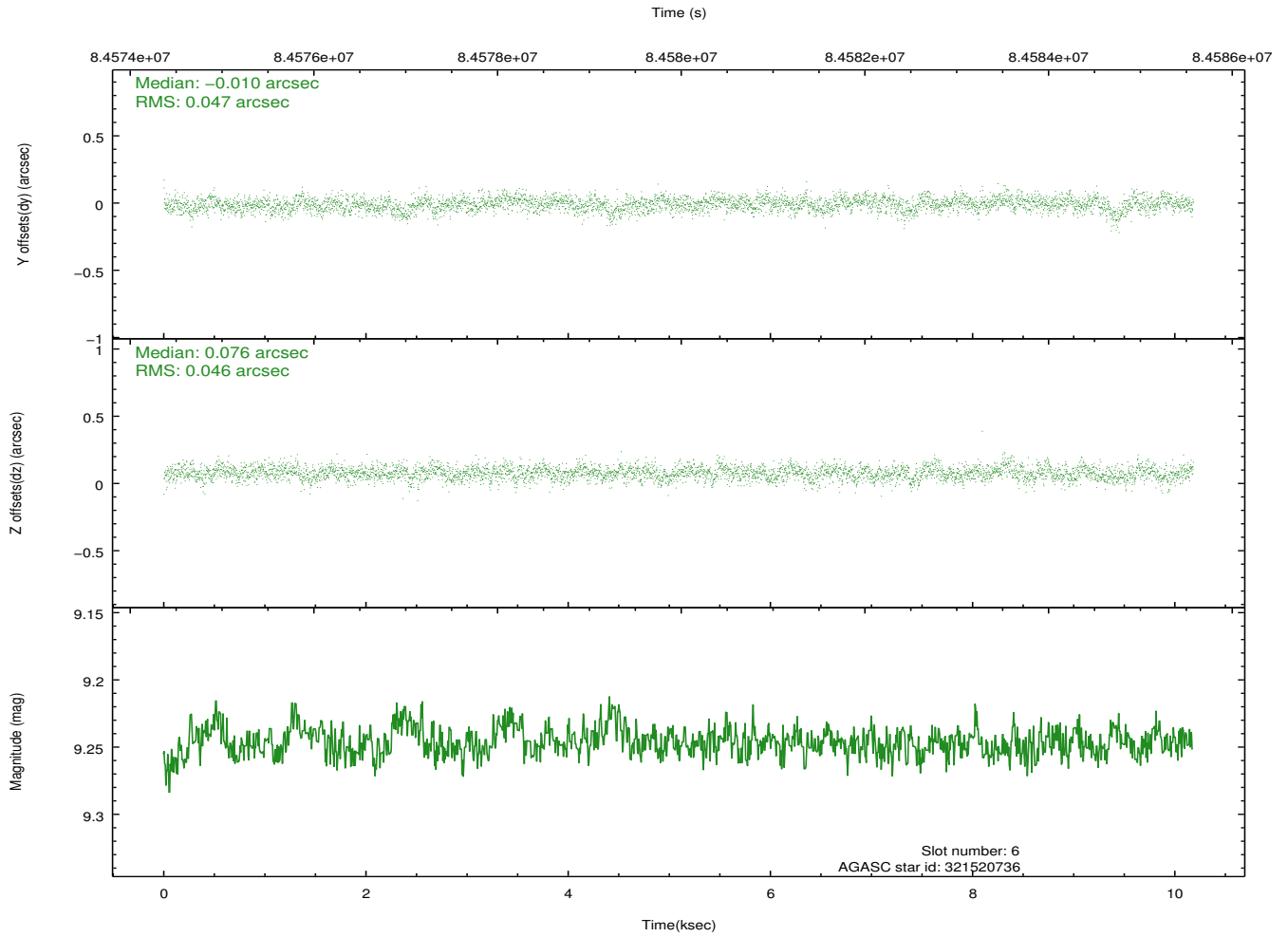
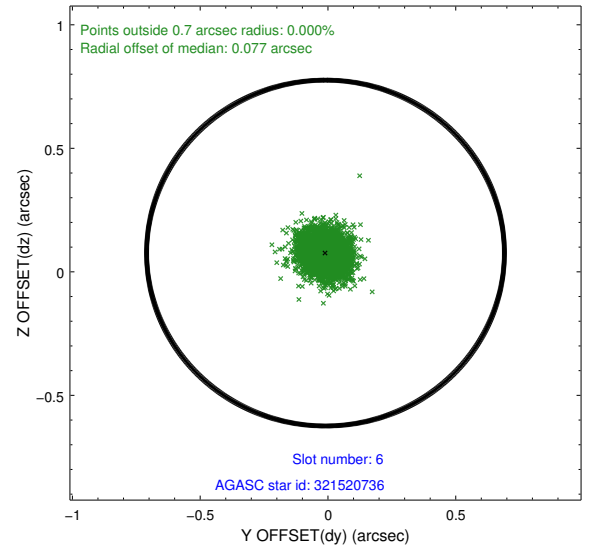
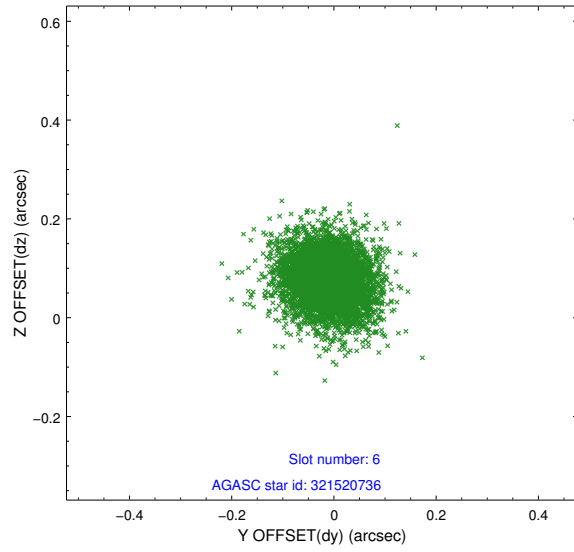
## 2.4.2 Slot 4



### 2.4.3 Slot 5

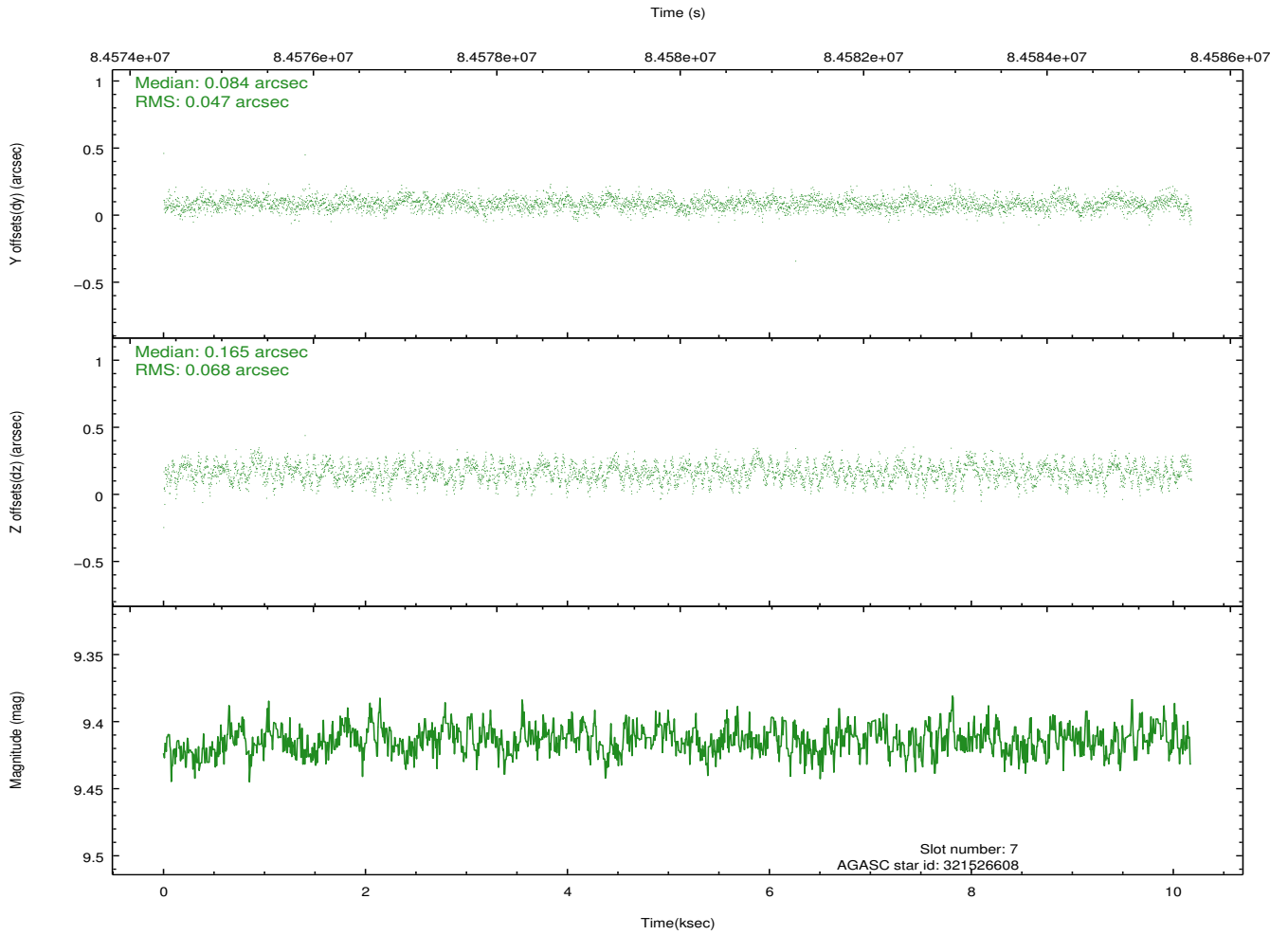
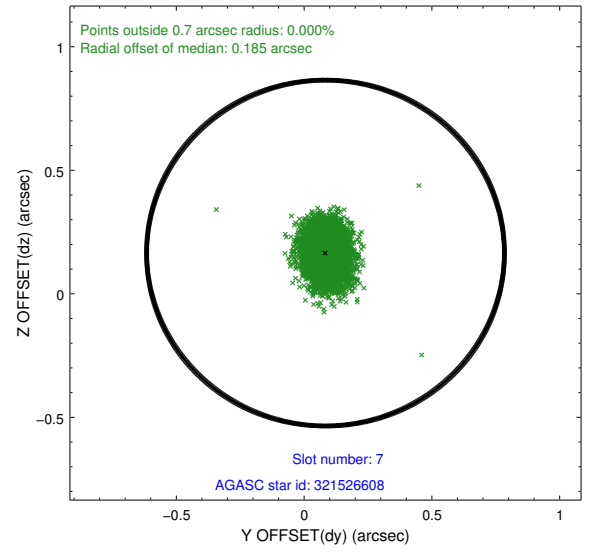
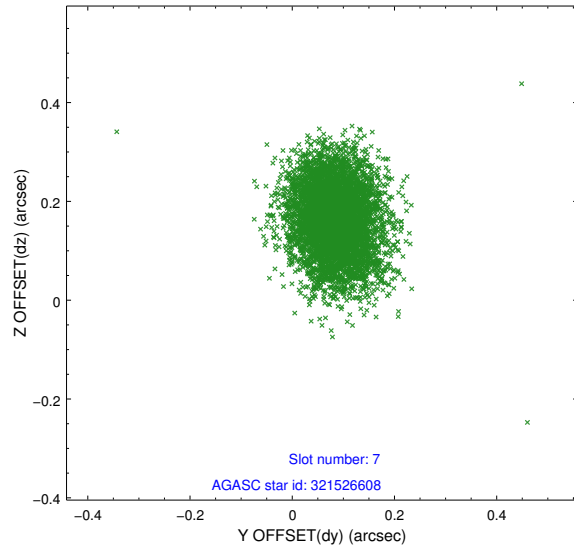


## 2.4.4 Slot 6



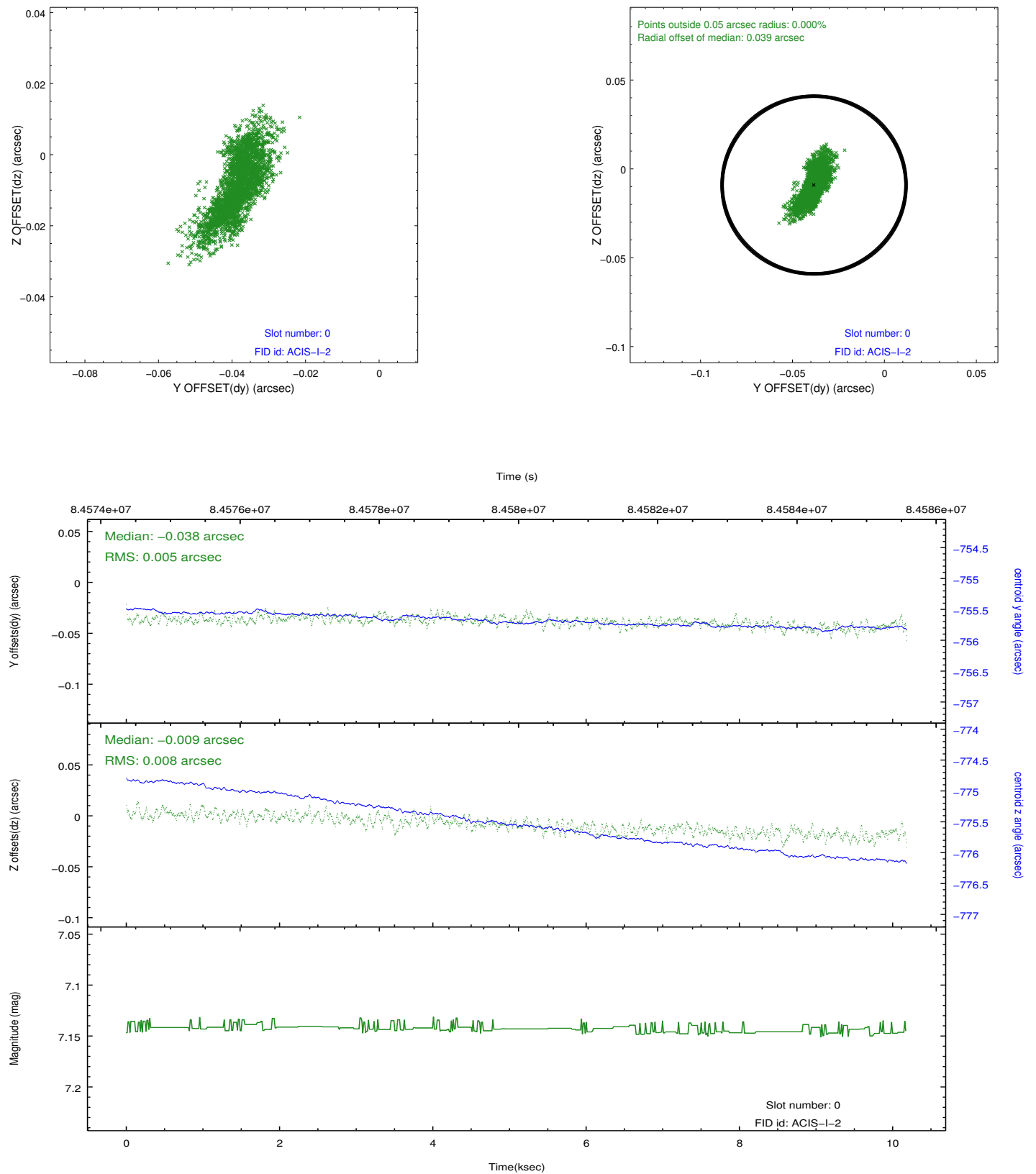


## 2.4.5 Slot 7

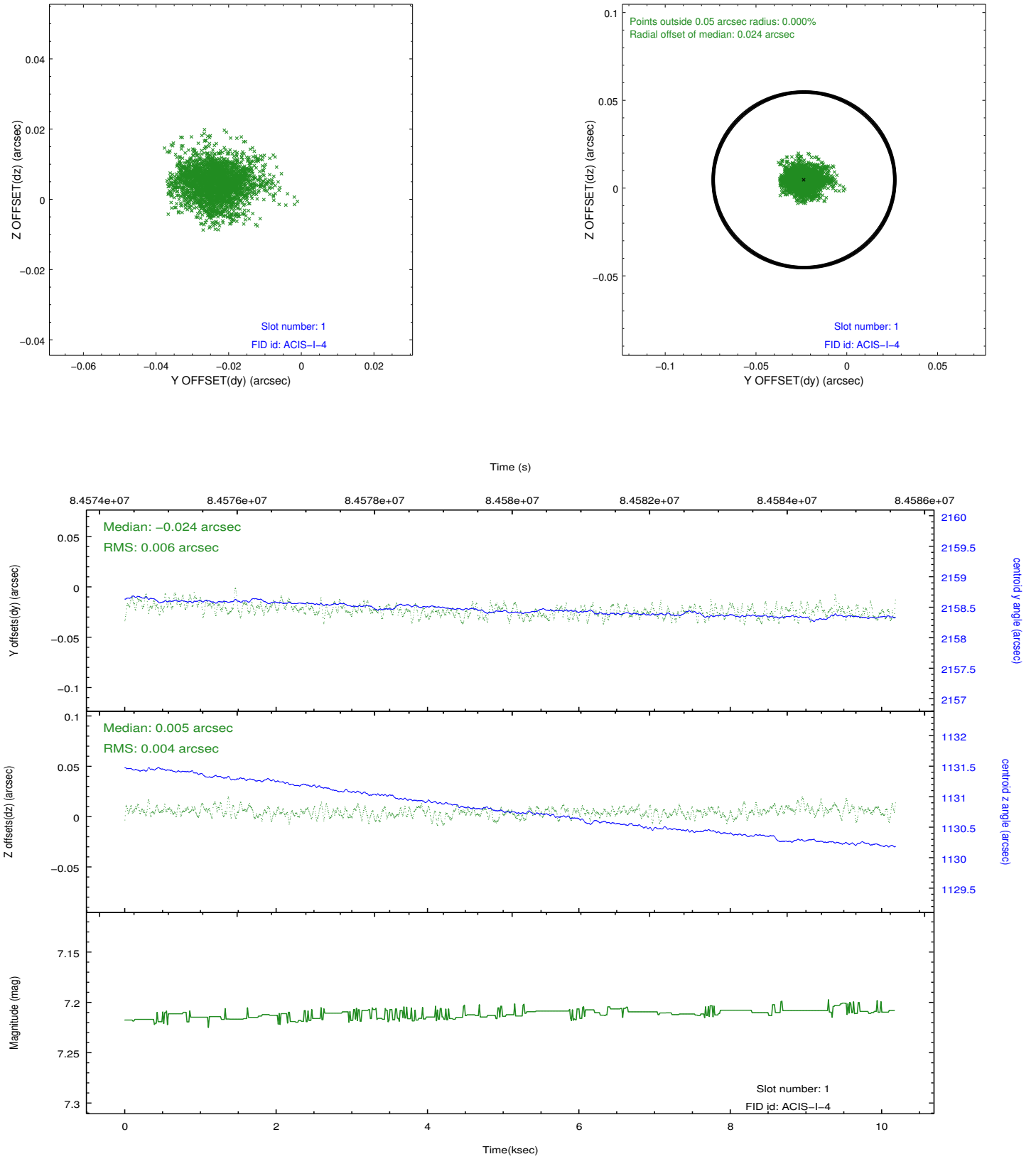


## 2.5 FID Slots

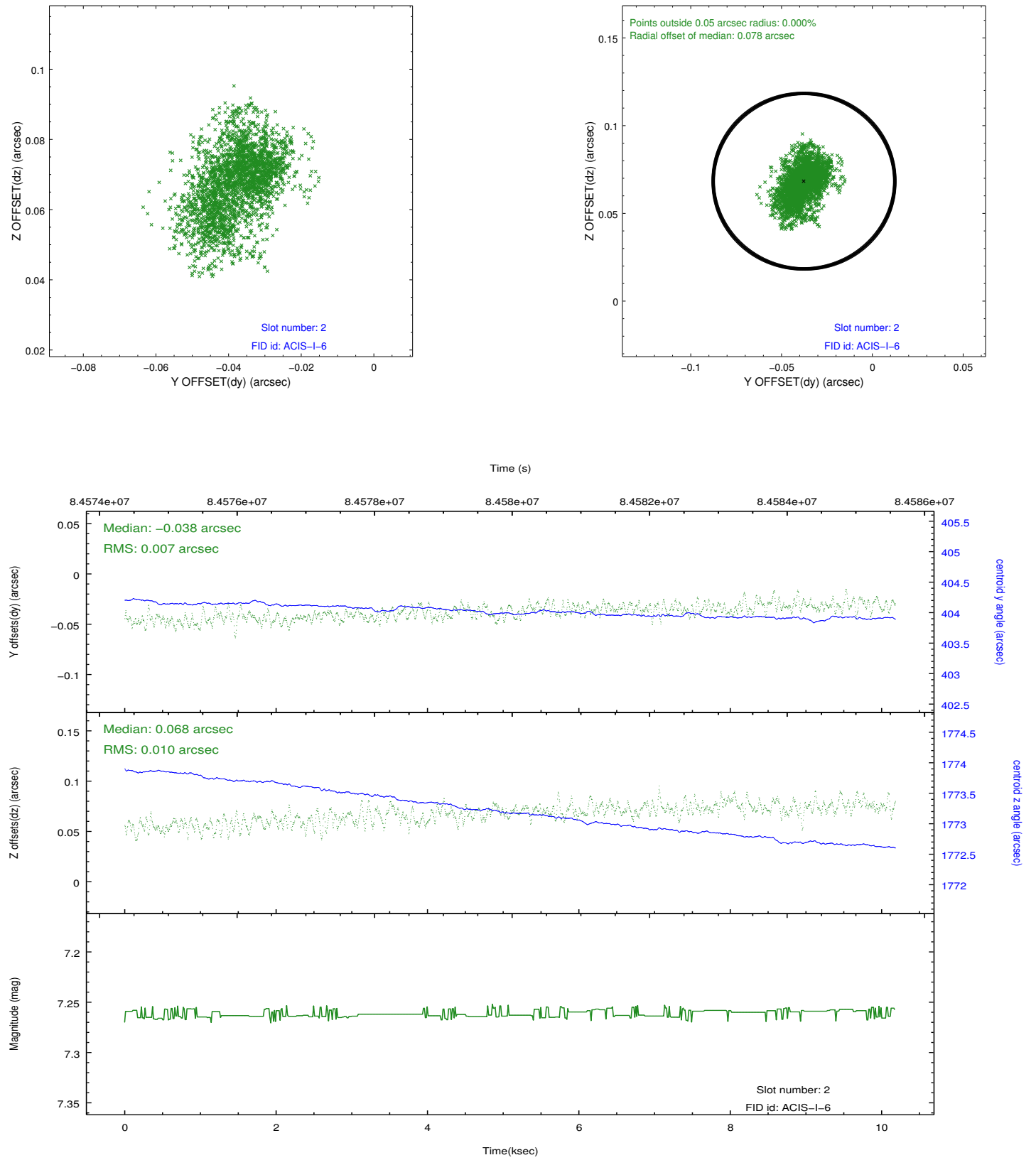
### 2.5.1 Slot 0



## 2.5.2 Slot 1



### 2.5.3 Slot 2



## A Summary

### A.1 Status

V&V Scientist	Jen Lauer
V&V Date (YYYY-MM-DD)	2012.09.07
V&V Edition	1
V&V Disposition and Status	OK
V&V Charge Time	10.172

### A.2 Comments