

V&V Reference Report

L2 ASCDS Version : 7.6.7.2

Observation 5290 - L2 Version 001
Chandra X-Ray Center

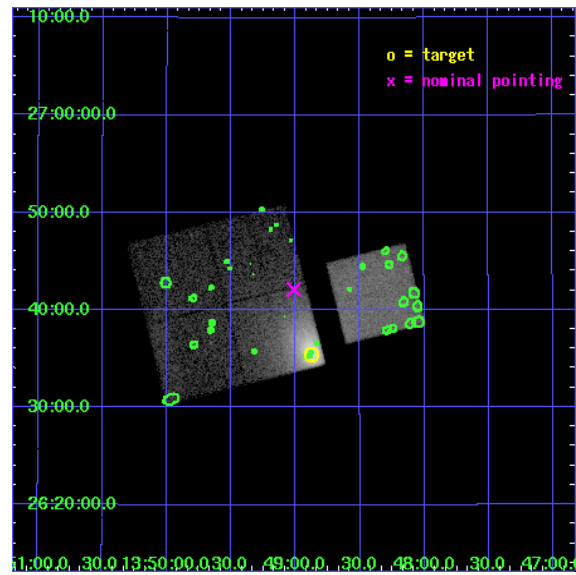
L2 Processing Date : Jun 6 2006

Contents

1	Front	2
2	OBI	3
2.1	OBI	3
2.1.1	Images	3
2.1.2	Bias	3
2.1.3	Parameters	4
2.1.4	Events	4
2.2	Compared Parameters	5
2.3	Aspect	6
2.4	Star Slots	9
2.4.1	Slot 3	9
2.4.2	Slot 4	10
2.4.3	Slot 5	11
2.4.4	Slot 6	12
2.4.5	Slot 7	13
2.5	FID Slots	14
2.5.1	Slot 0	14
2.5.2	Slot 1	15
2.5.3	Slot 2	16
3	Point Sources	17
A	Summary	18
A.1	Status	18
A.2	Comments	18

1 Front

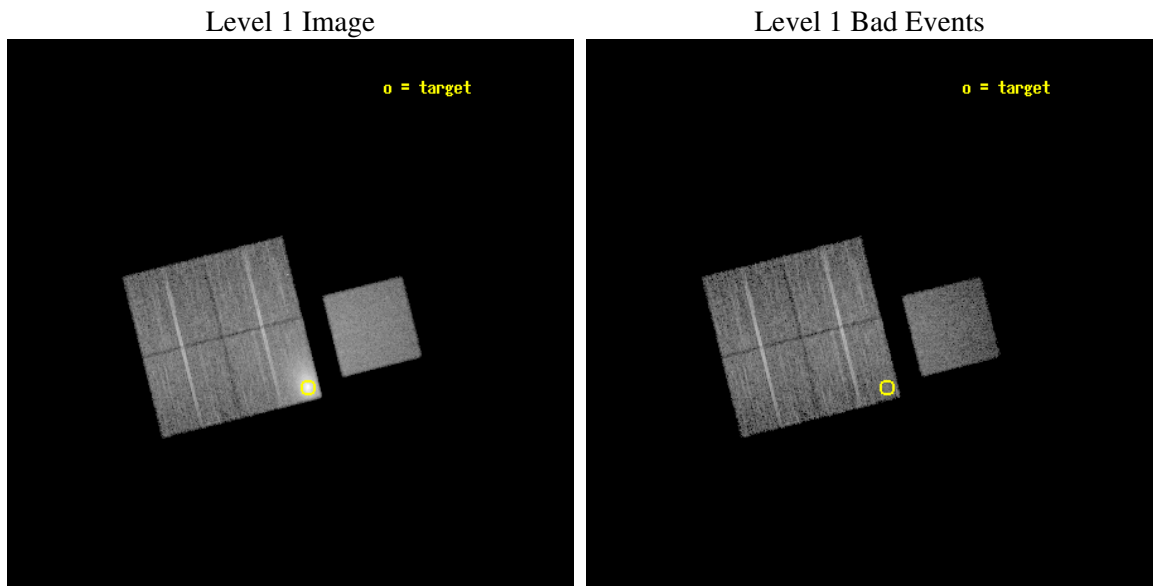
seq_num	890030
obs_id	5290
title	Mapping the Depth of the Contaminant on the ACIS Filters with Abell 11795
observer	Dr. CXC Calibration
object	A1795
dtcycle	0
cycle	P
ra_targ	207.219583
dec_targ	26.590833
ra_nom	207.25334354292
dec_nom	26.702089447062
roll_nom	75.924710819976
revision	2
ontime	15143.499970883
livetime	14945.638995281
ontime0	15140.359000623
ontime1	15140.358970731
ontime2	15143.499970883
ontime3	15143.499970883
ontime7	15143.499970883
l2events	154967



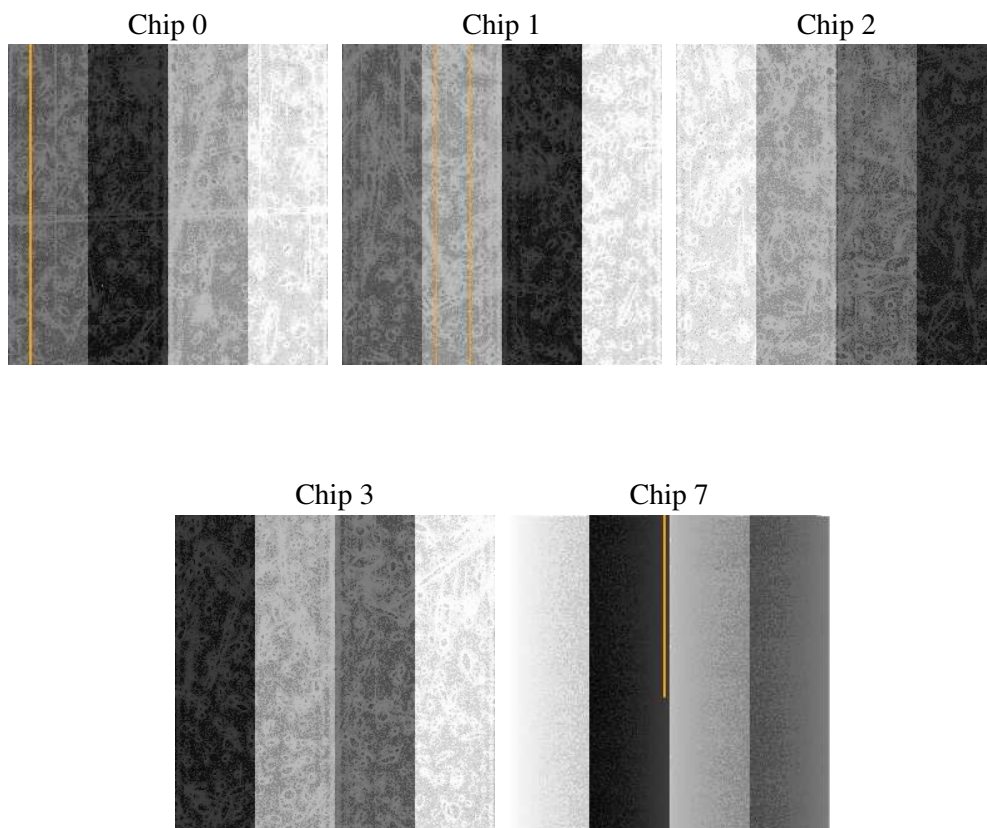
2 OBI

2.1 OBI

2.1.1 Images



2.1.2 Bias



2.1.3 Parameters

obi_num	1
ascdsver	7.6.7.2
caldsver	3.2.2
date	2006-06-07T02:04:28
revision	2

sched_exp_time	15000.000000
ontime	15676.747664273
ontime0	15673.606694013
ontime1	15673.606664121
ontime2	15676.747664273
ontime3	15676.747664273
ontime7	15676.747664273
l1events	484575

2.1.4 Events

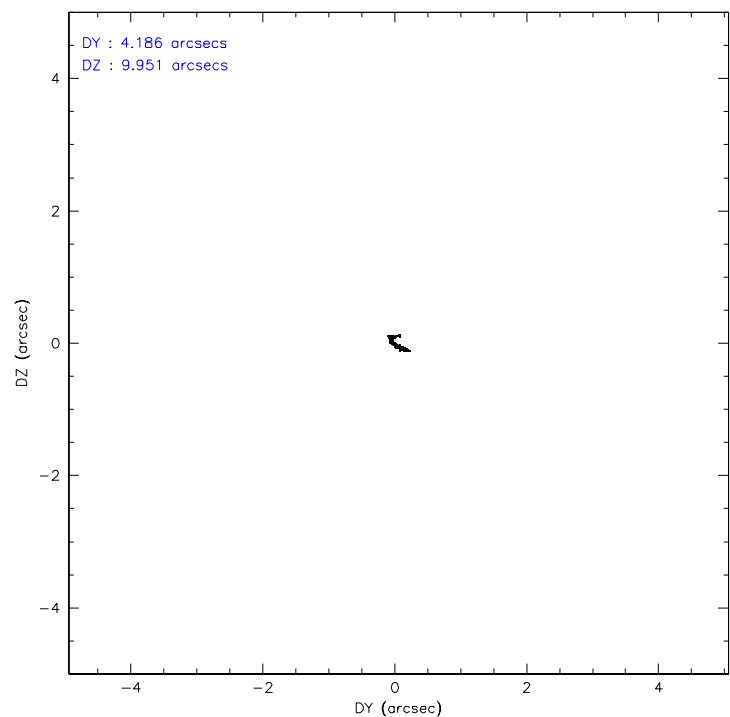
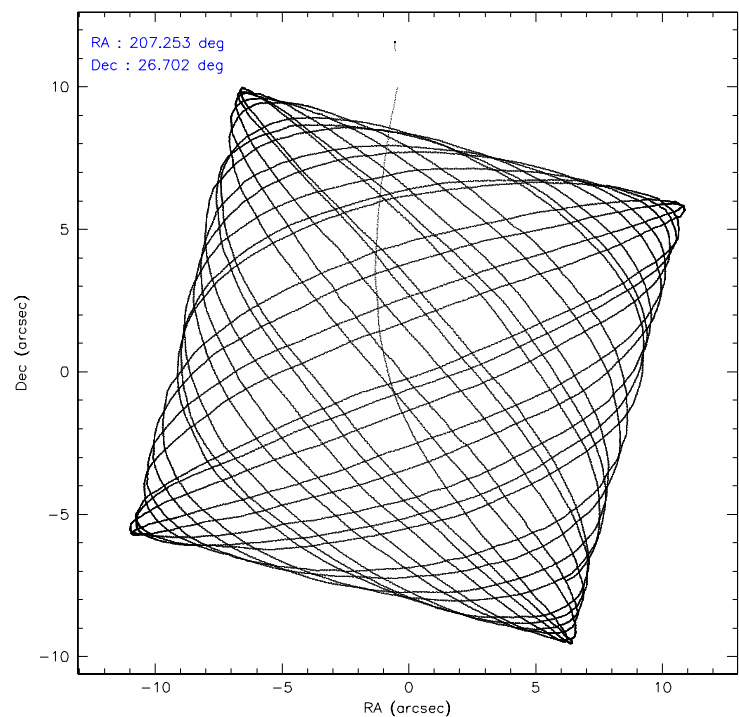
	ccd 0	ccd 1	ccd 2	ccd 3	ccd 7
level 1 events	69679	73795	80509	162247	98345
rejected events	61182	63682	70325	74078	52154
rejected %	87%	86%	87%	45%	53%

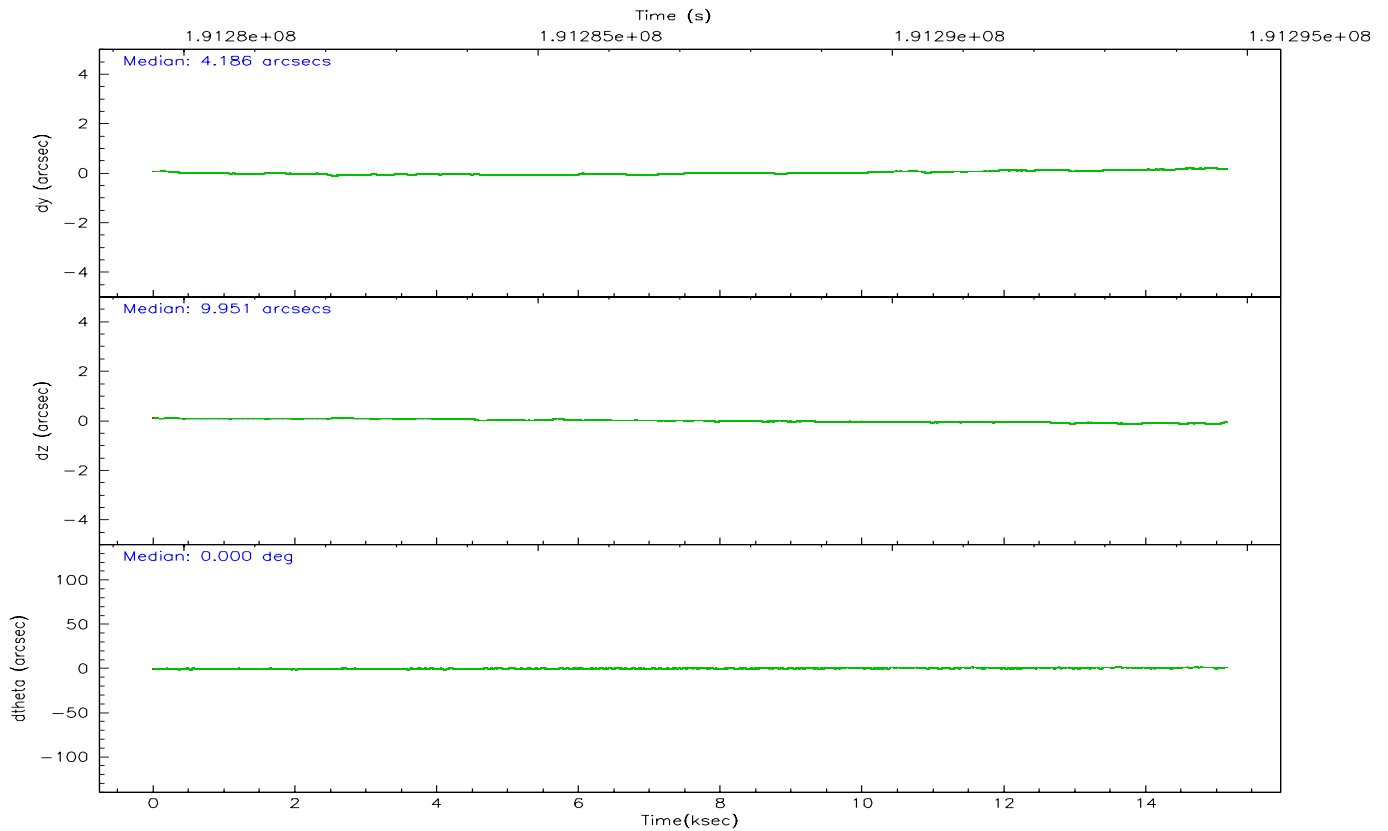
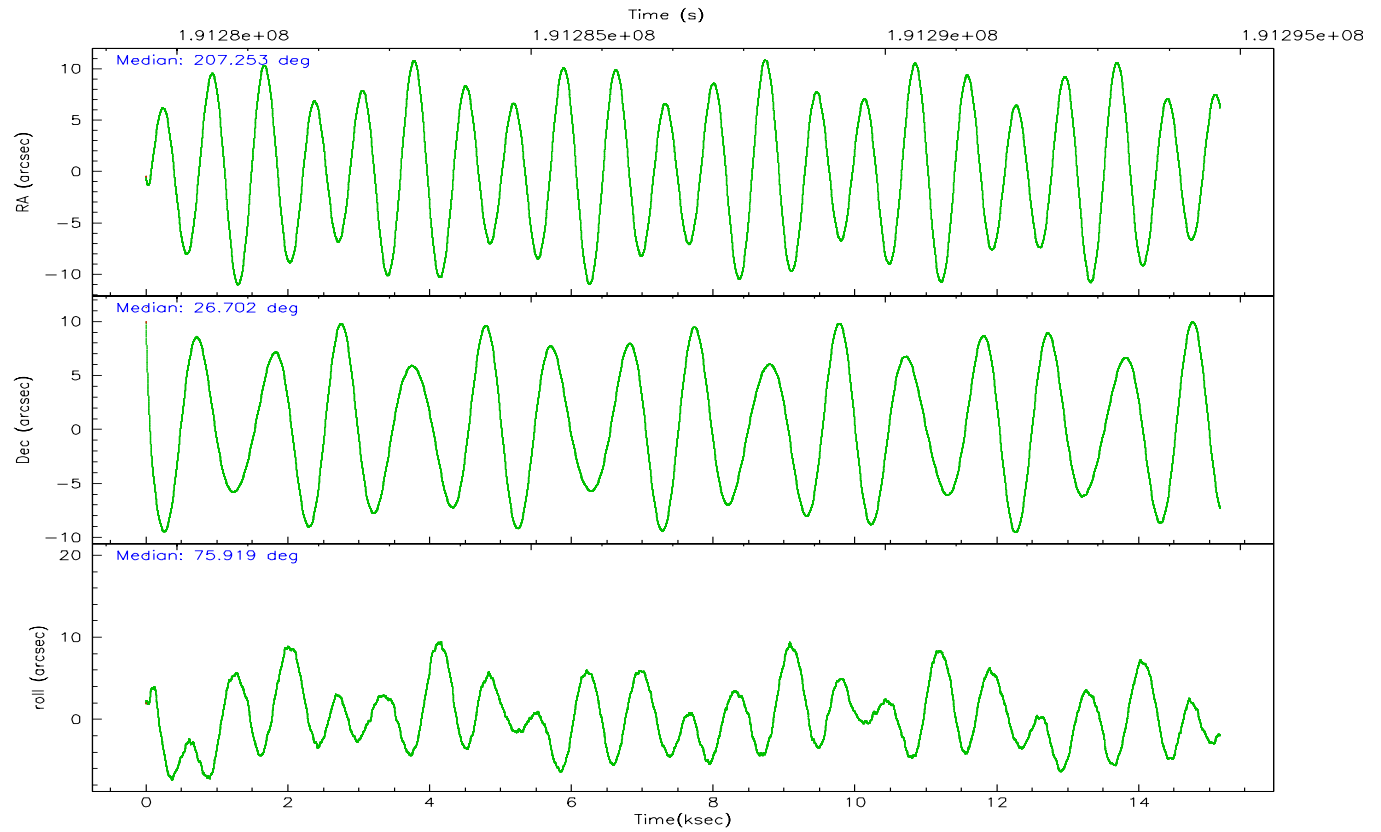
	ccd 0	ccd 1	ccd 2	ccd 3	ccd 7
grade 0 events	3840	4871	5363	69372	4628
	5%	6%	6%	42%	4%
grade 1 events	28	37	58	305	42
	0%	0%	0%	0%	0%
grade 2 events	2014	2183	2148	9786	11892
	2%	2%	2%	6%	12%
grade 3 events	990	1034	902	3452	3096
	1%	1%	1%	2%	3%
grade 4 events	887	1031	956	3425	3028
	1%	1%	1%	2%	3%
grade 5 events	2748	2986	2594	3290	6854
	3%	4%	3%	2%	6%
grade 6 events	1593	1870	1480	3595	25056
	2%	2%	1%	2%	25%
grade 7 events	57579	59783	67008	69022	43749
	82%	81%	83%	42%	44%

2.2 Compared Parameters

Parameter	Planned	Actual	Parameter	Planned	Actual
Instrument	ACIS	ACIS	Obspar format version number	6	6
Detector	ACIS-01237	ACIS-01237	Obspar file type	PREDICTED	ACTUAL
Grating	NONE	NONE	Obspar update status	NONE	UPDATED
Data mode	VFAINT	VFAINT	On-chip summing requested	N	N
Observation mode	POINTING	POINTING	Subarray requested	NONE	NONE
Pointing RA	207.261861	207.2533435429197	Alternating exposures requested	N	N
Pointing Dec	26.675806	26.70208944706176	Primary exposure time	0.000000	3.1
Pointing Roll	75.712200	75.92471081997606			
SIM focus pos (mm)	-0.782348	-0.7809083437167272			
SIM defocus (mm)	0	0.001439871863259334			
SIM translation stage pos (mm)	-214.092463	-214.0964622431356			
SIM translation stage offset (mm)	-19.5	-19.49599075979413			
Observation start time	191279720.184000	191278476.75904			
Observation start date	2004-01-23T21:14:16	2004-01-23T20:54:36			
Observation end time	191294720.184000	191295242.68477			
Observation end date	2004-01-24T01:24:16	2004-01-24T01:34:02			
Read mode	TIMED	TIMED			

2.3 Aspect



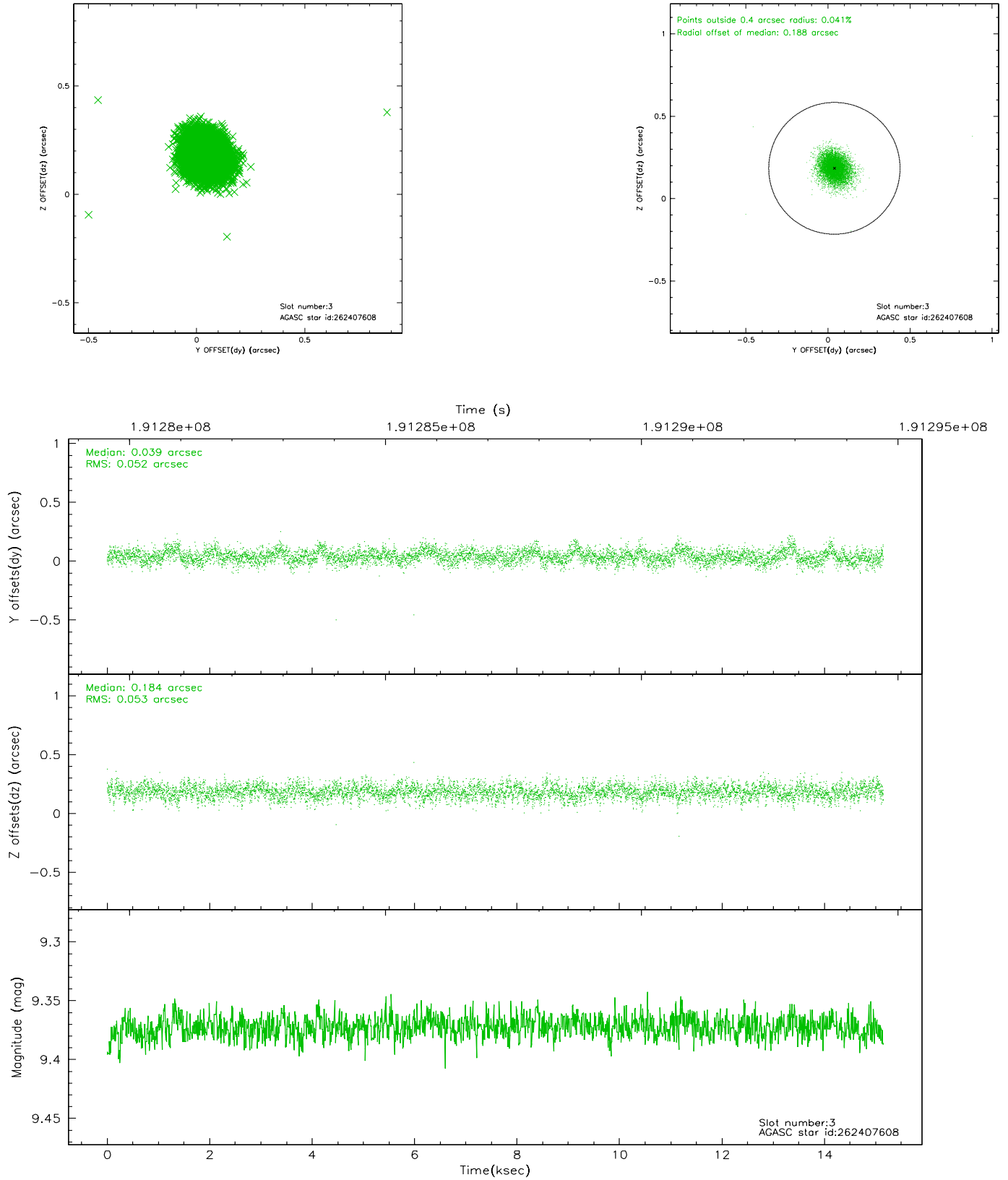


Slot Statistics

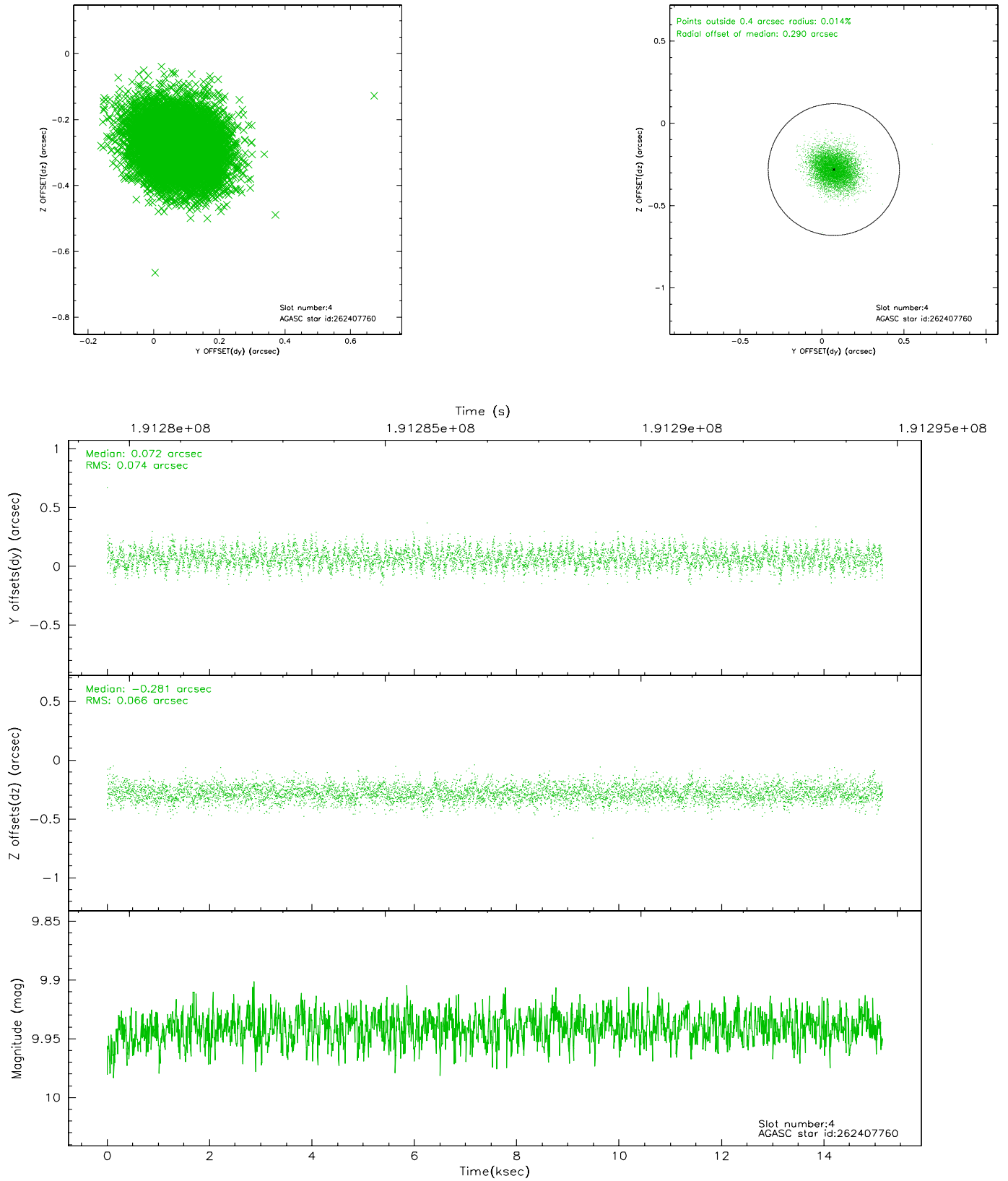
slot	status	id	mag	n_pts	med_dy	med_dz	dr1	dr2	ra	dec	mean_y	mean_z
0	FID	ACIS-I-1	7.20	3696	0.236	-0.166	0.007	0.012	0.000000	0.000000	935.37	-1234.01
1	FID	ACIS-I-5	7.22	3696	-0.390	0.180	0.007	0.013	0.000000	0.000000	-1813.12	663.68
2	FID	ACIS-I-6	7.27	3695	0.062	0.057	0.006	0.010	0.000000	0.000000	400.53	1308.32
3	GUIDE	262407608	9.37	7389	0.039	0.184	0.077	0.125	207.378401	26.435507	-745.01	-577.26
4	GUIDE	262407760	9.94	7387	0.072	-0.281	0.105	0.169	206.566773	26.577263	-890.10	2082.52
5	GUIDE	262408096	9.34	7390	0.094	-0.037	0.095	0.163	207.011678	26.515421	-757.38	639.22
6	GUIDE	262408512	8.01	7389	-0.273	0.215	0.058	0.095	207.800210	27.128796	2009.67	-1267.48
7	GUIDE	262408936	9.64	7382	0.069	-0.084	0.096	0.160	207.154731	26.726554	92.79	378.80

2.4 Star Slots

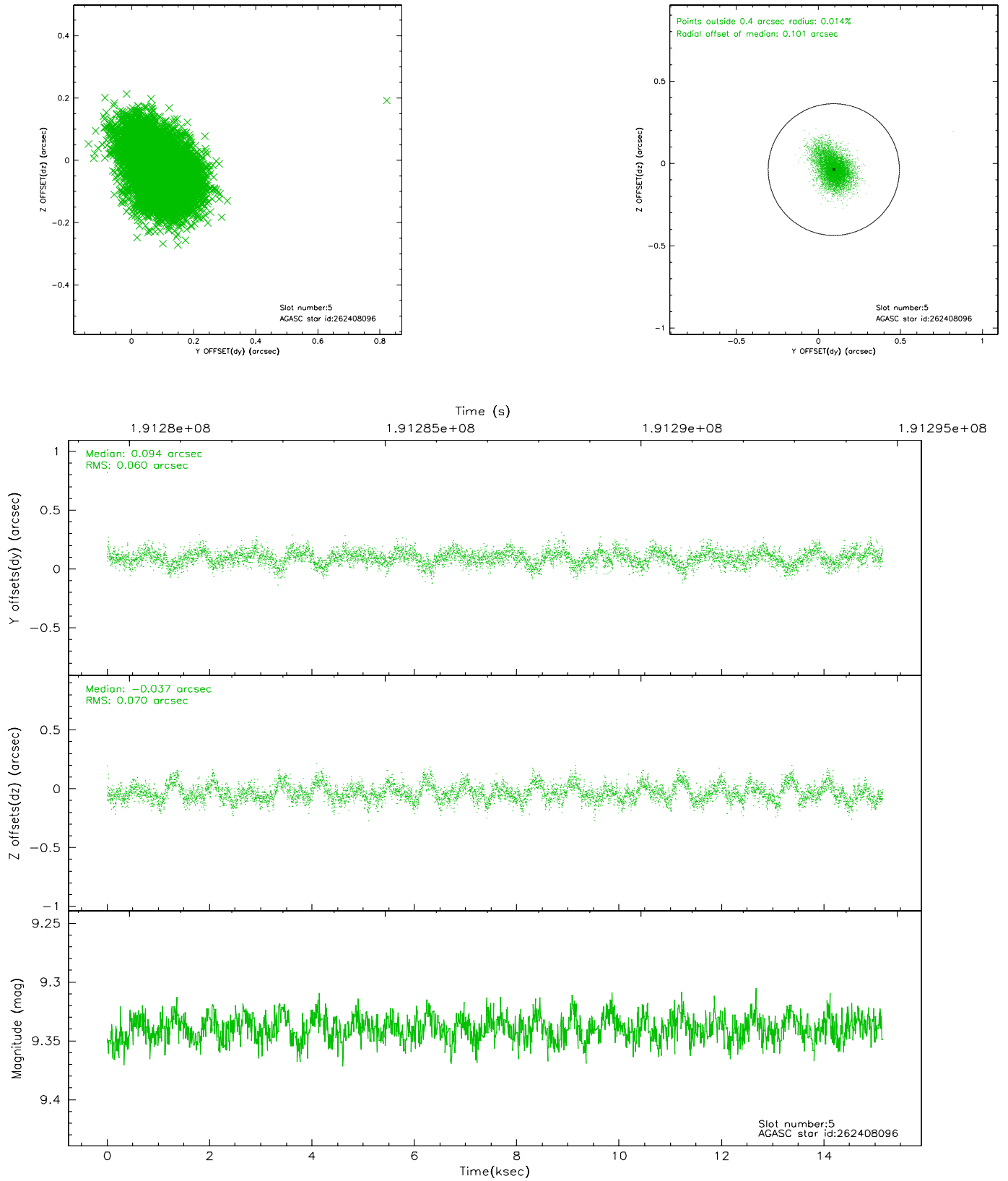
2.4.1 Slot 3



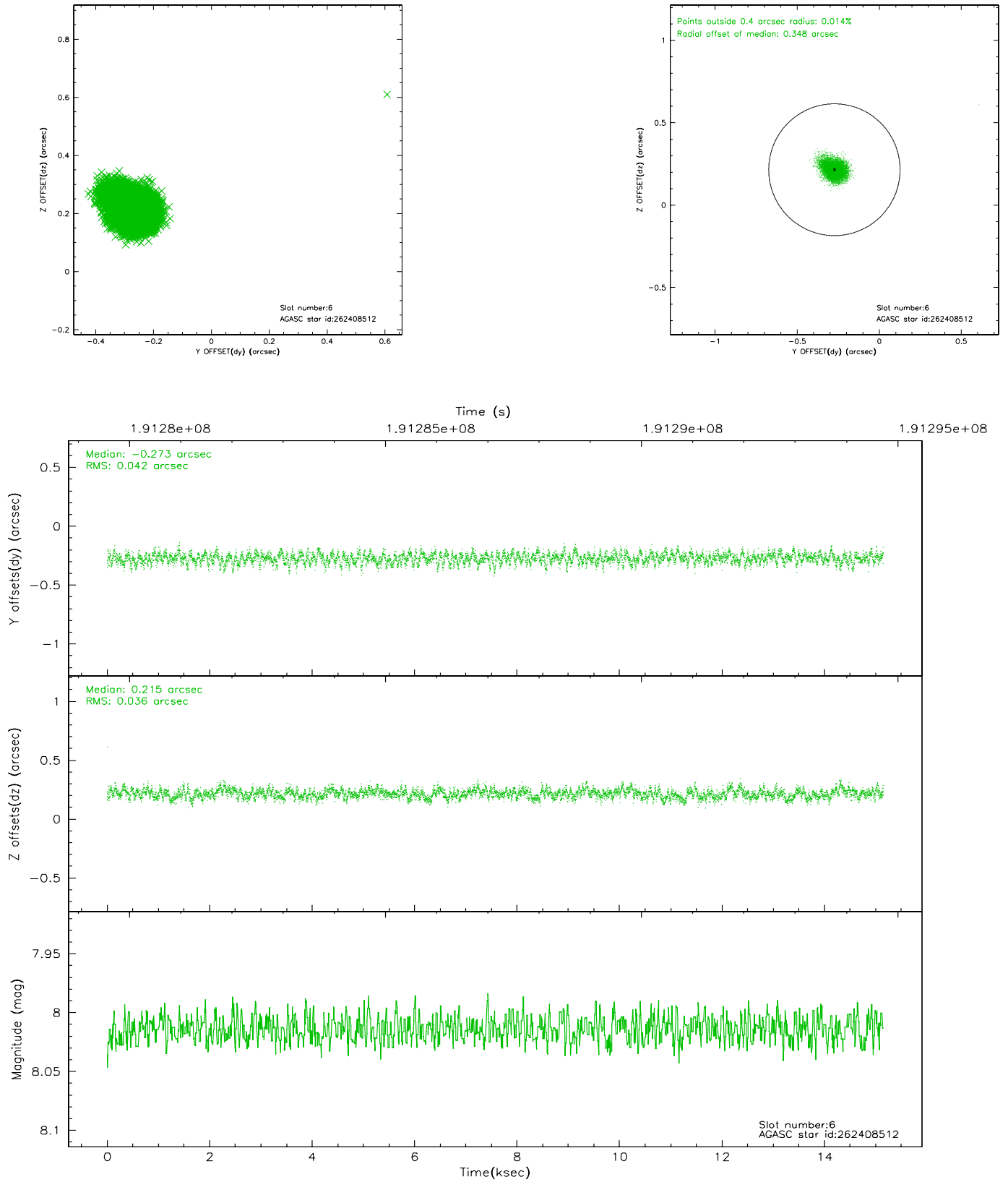
2.4.2 Slot 4



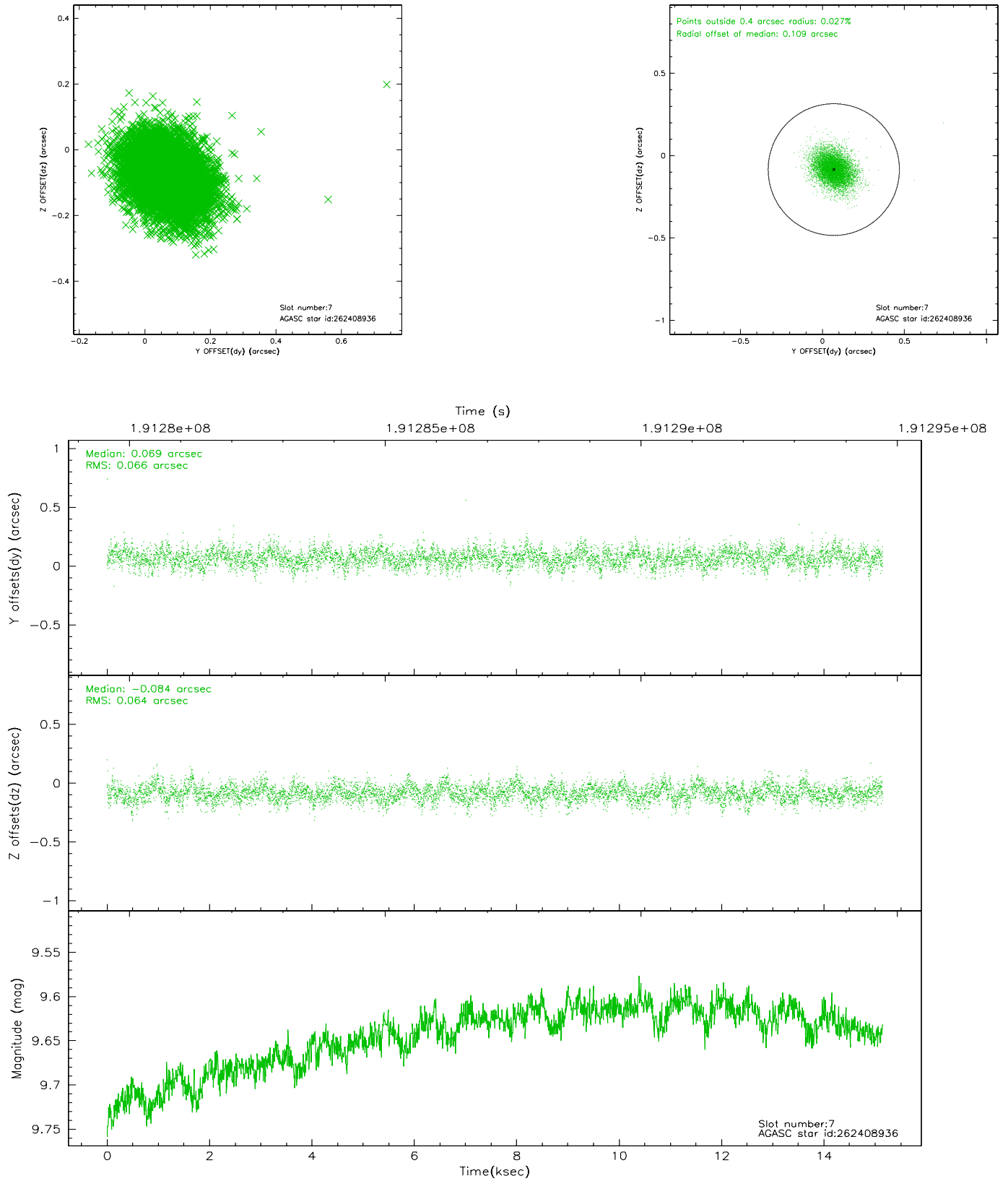
2.4.3 Slot 5



2.4.4 Slot 6

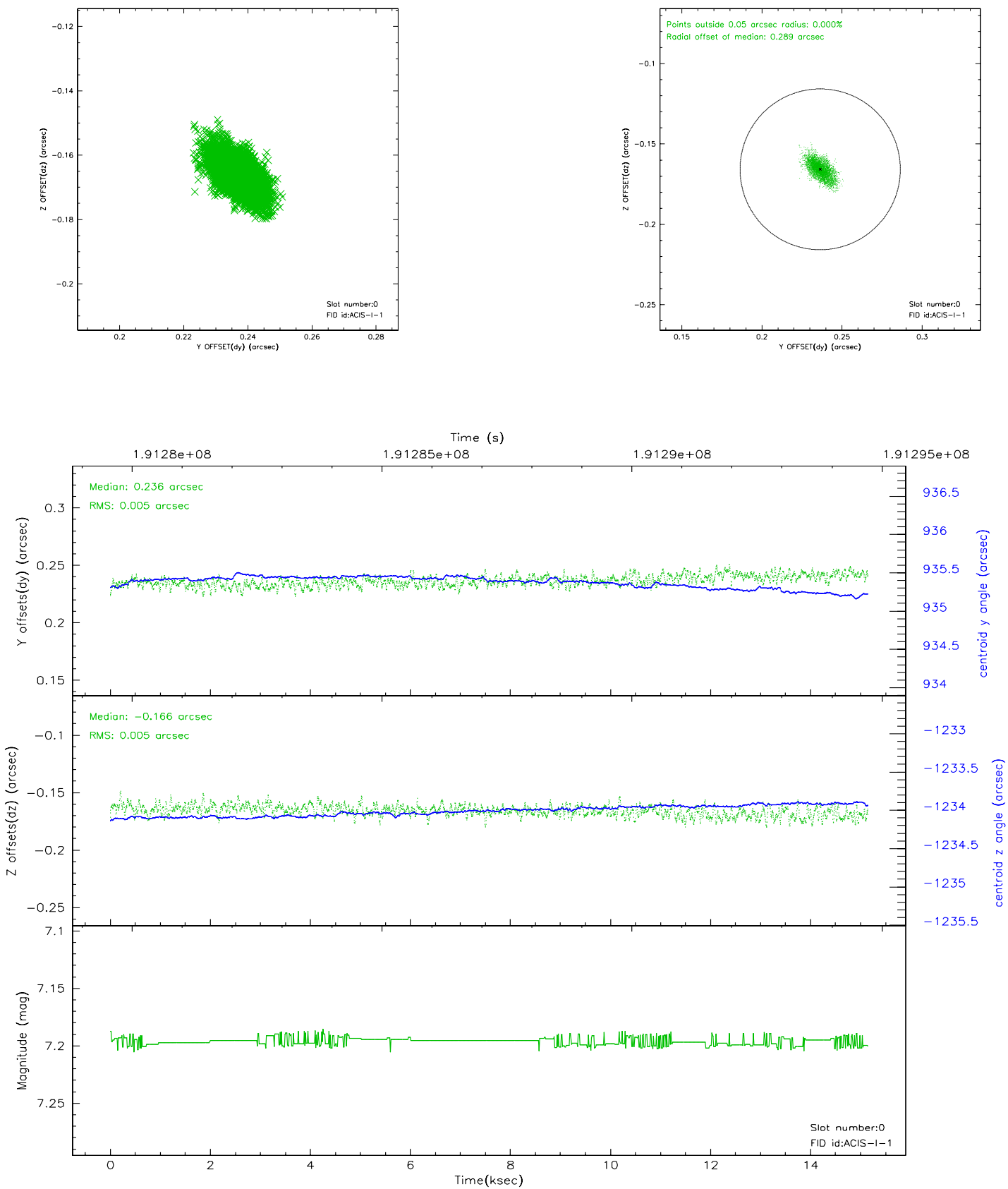


2.4.5 Slot 7

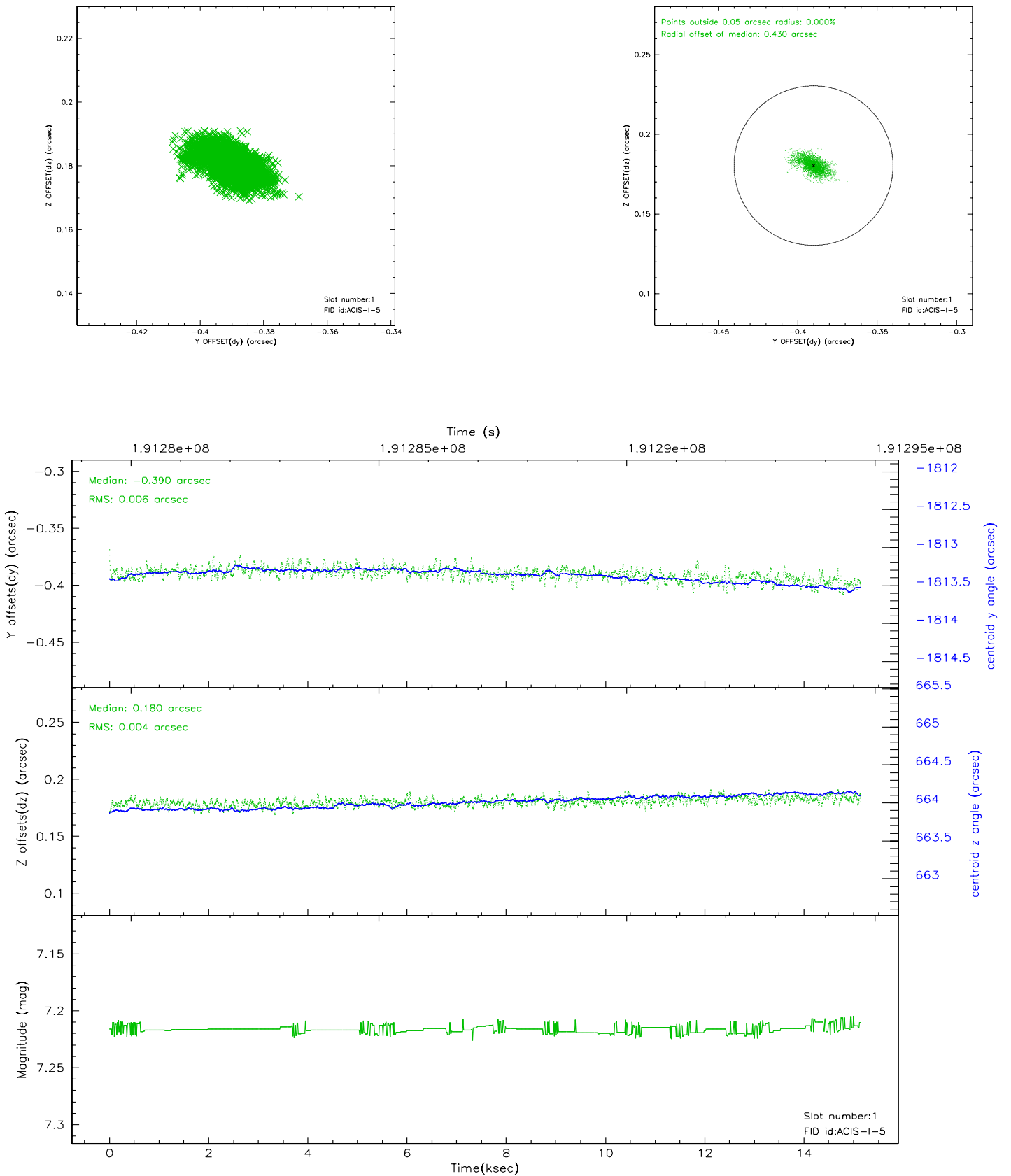


2.5 FID Slots

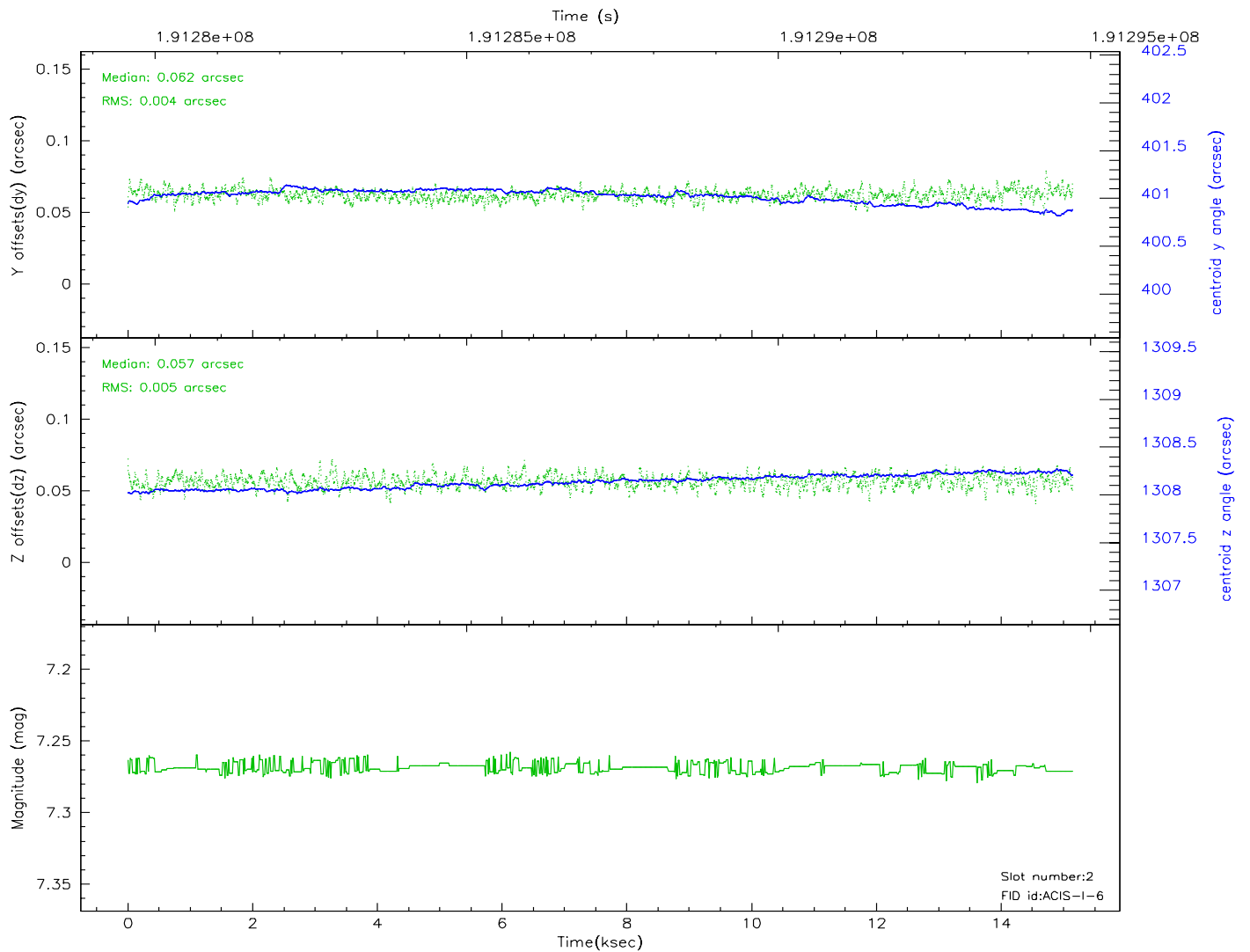
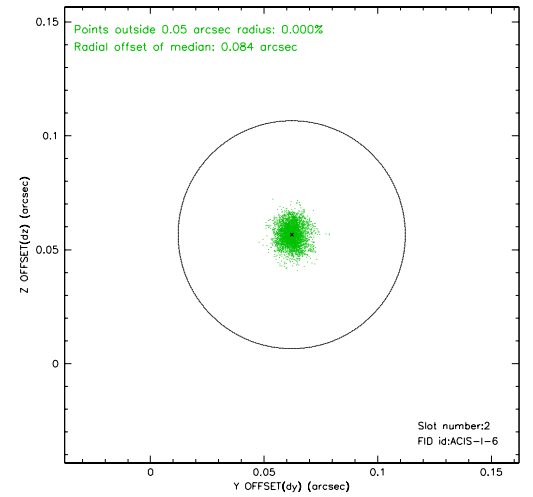
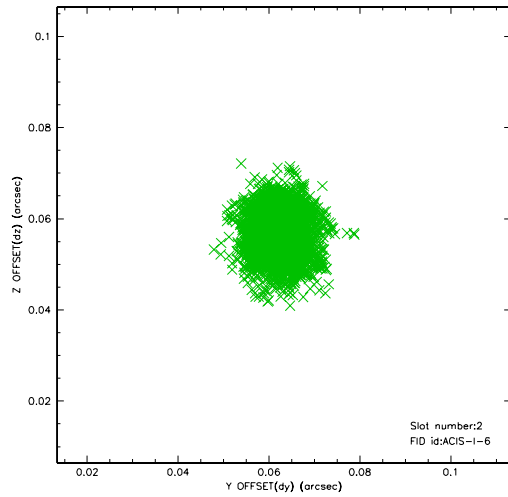
2.5.1 Slot 0



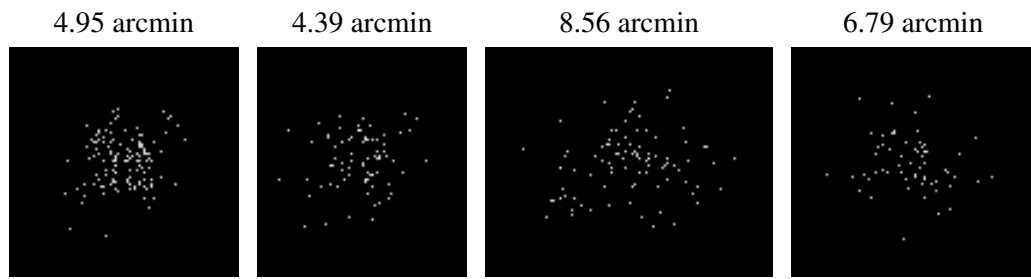
2.5.2 Slot 1



2.5.3 Slot 2



3 Point Sources



A Summary

A.1 Status

V&V Scientist	Beth Sundheim
V&V Date (YYYY-MM-DD)	2006.06.07
V&V Edition	1
V&V Disposition and Status	OK
V&V Charge Time	15.143

A.2 Comments

Comments for Obi 1

Fid in slot 1 radial offset > 0.400000 arcsec