

V&V Reference Report

L2 ASCDS Version : 10.2.1

Observation 52860 - L2 Version 1
Chandra X-Ray Center

L2 Processing Date : Apr 9 2014

Contents

1	Front	2
2	OBI	3
2.1	OBI	3
2.1.1	Images	3
2.1.2	Bias	3
2.1.3	Parameters	4
2.1.4	Events	4
2.2	Compared Parameters	5
2.3	Star Slots	6
2.4	FID Slots	6
A	Summary	7
A.1	Status	7
A.2	Comments	7

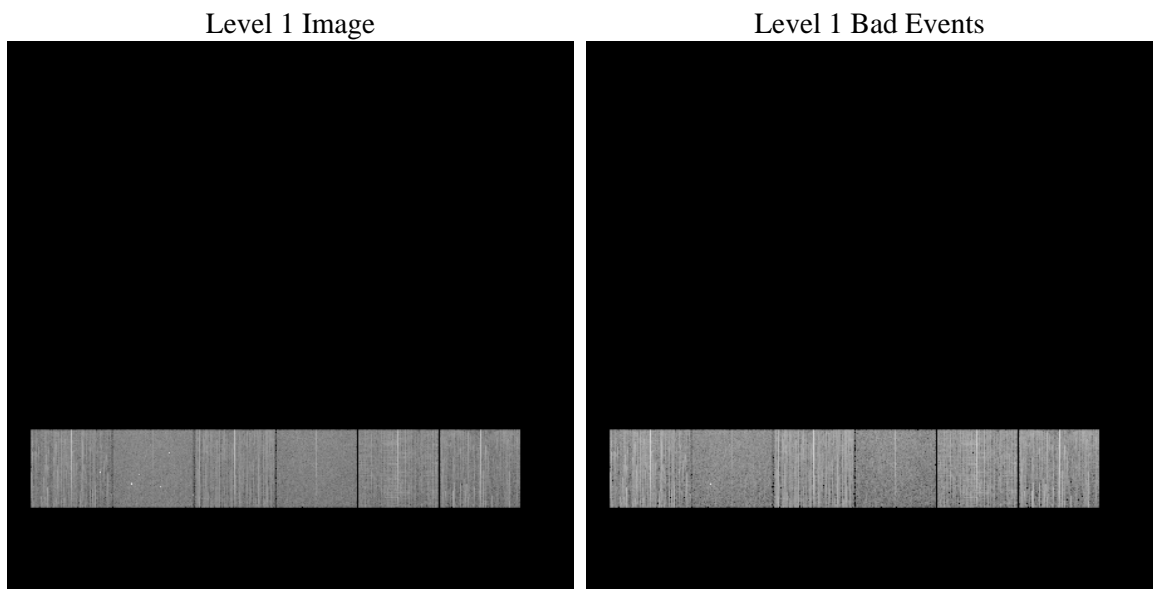
1 Front

seq_num	 	Sequence number
obs_id	52860	Observation id
title	ACIS-456789 diagnostics	Proposal title
observer	CHANDRA engineering request/realtime commanding	Principal investig
object	 	Source name
dtcycle	0	
cycle	P	events from which exps? Prim/Second/Both
ra_targ	0.0	Observer's specified target RA [deg]
dec_targ	0.0	Observer's specified target Dec [deg]
ra_nom	176.03233138476	Nominal RA [deg]
dec_nom	-30.006738141092	Nominal Dec [deg]
roll_nom	313.61009244716	Nominal Roll [deg]
revision	1	Processing version of data
ontime	6566.3999755979	Sum of GTIs [s]
livetime	6483.2522652955	Livetime [s]
ontime4	6563.1589353085	Sum of GTIs [s]
ontime5	6566.3999755979	Sum of GTIs [s]
ontime6	6566.3999755979	Sum of GTIs [s]
ontime7	6566.3999755979	Sum of GTIs [s]
ontime8	6566.3999755979	Sum of GTIs [s]
ontime9	6566.3999755979	Sum of GTIs [s]
l2events	162515	Number of level 2 events

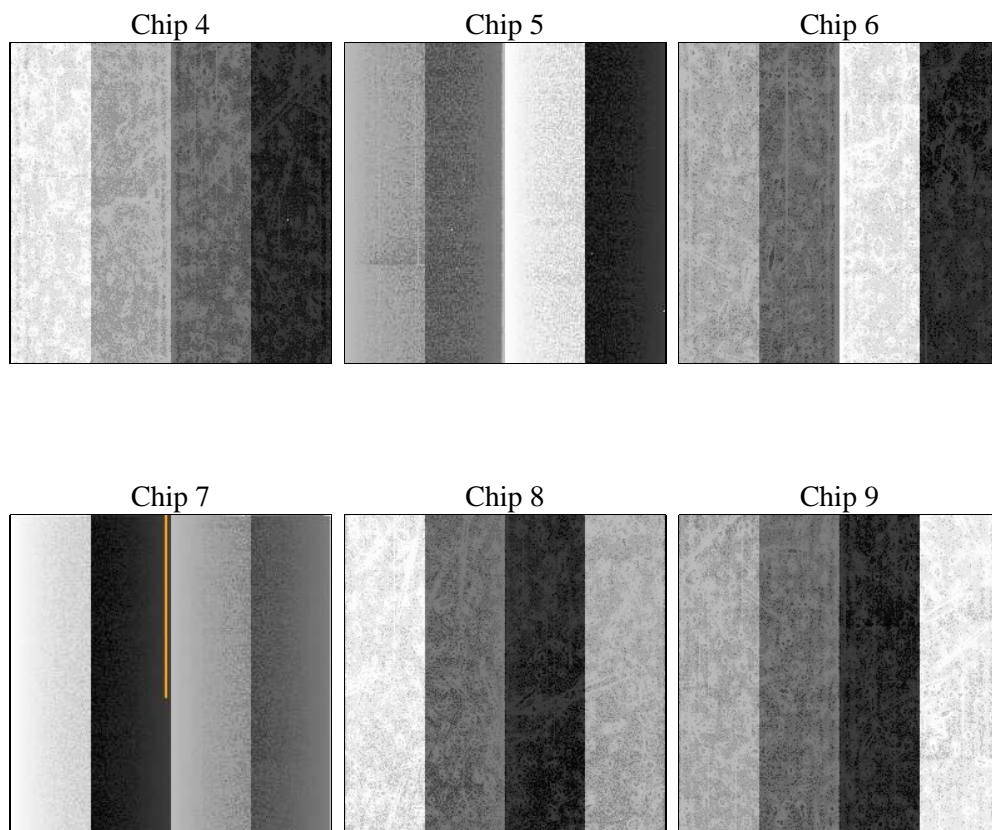
2 OBI

2.1 OBI

2.1.1 Images



2.1.2 Bias



2.1.3 Parameters

obi_num	1	Obi number	sched_exp_time	0.0	[s] Scheduled observation exposure time
ascdsver	10.2.1	Processing system revision	ontime	6566.3999755979	Sum of GTIs [s]
caldsver	4.6.1	 	ontime4	6563.1589353085	Sum of GTIs [s]
date	2014-04-09T16:03:16	Date and time of file creation	ontime5	6566.3999755979	Sum of GTIs [s]
revision	1	Processing version of data	ontime6	6566.3999755979	Sum of GTIs [s]
			ontime7	6566.3999755979	Sum of GTIs [s]
			ontime8	6566.3999755979	Sum of GTIs [s]
			ontime9	6566.3999755979	Sum of GTIs [s]
			l1events	635042	Number of level 1 events

2.1.4 Events

	ccd 4	ccd 5	ccd 6	ccd 7	ccd 8	ccd 9		ccd 4	ccd 5	ccd 6	ccd 7	ccd 8	ccd 9
level 1 events	111308	99504	114349	90356	113125	106400	grade 0 events	13091	5888	11066	5824	12976	10871
rejected events	87996	54449	91661	49724	84028	84519		11%	5%	9%	6%	11%	10%
rejected %	79%	54%	80%	55%	74%	79%	grade 1 events	93	73	48	59	67	50
								0%	0%	0%	0%	0%	0%
							grade 2 events	4136	16554	4568	9909	6080	4381
								3%	16%	3%	10%	5%	4%
							grade 3 events	1503	1523	1485	3379	2234	1527
								1%	1%	1%	3%	1%	1%
							grade 4 events	1511	1500	1512	3208	2181	1438
								1%	1%	1%	3%	1%	1%
							grade 5 events	2424	4601	2364	5340	2984	2672
								2%	4%	2%	5%	2%	2%
							grade 6 events	3076	19607	4064	18312	5633	3676
								2%	19%	3%	20%	4%	3%
							grade 7 events	85474	49758	89242	44325	80970	81785
								76%	50%	78%	49%	71%	76%

2.2 Compared Parameters

Parameter	Planned	Actual	Parameter	Planned	Actual
Instrument	ACIS	ACIS	Obspar format version number	7	7
Detector	ACIS-456789	ACIS-456789	Obspar file type	PREDICTED	ACTUAL
Grating	NONE	NONE	Obspar update status	NONE	UPDATED
Data mode	FAINT	FAINT	Number of optional ACIS chips dropped	0	0
Observation mode	SECONDARY	SECONDARY	On-chip summing requested	N	N
[deg] Pointing RA	0	176.0323313847568	Subarray requested	NONE	NONE
[deg] Pointing Dec	0	-30.00673814109151	Alternating exposures requested	N	N
[deg] Pointing Roll	0.0	313.6100924471583	[s] Primary exposure time	3.2	3.2
[mm] SIM focus pos	-1.429586	-1.428180813131781			
[mm] SIM defocus	0.1037507710433287	0.1051558262725154			
[mm] SIM translation stage pos	250.455976	250.466033080201			
[mm] SIM translation stage offset	0	-0.01005468664627074			
[s] Observation start time (MET)	513412356.461392	513412355.43639			
Observation start date	2014-04-09T06:32:36	2014-04-09T06:32:35			
[s] Observation end time (MET)	513421079.211873	513421078.18687			
Observation end date	2014-04-09T08:57:59	2014-04-09T08:57:58			
Read mode	TIMED	TIMED			

2.3 Star Slots

2.4 FID Slots

A Summary

A.1 Status

V&V Scientist	Beth Sundheim
V&V Date (YYYY-MM-DD)	2014.04.09
V&V Edition	1
V&V Disposition and Status	OK
V&V Charge Time	6.5663999755979

A.2 Comments