

# V&V Reference Report

## L2 ASCDS Version : 10.3.1

Observation 52270 - L2 Version 1  
Chandra X-Ray Center

L2 Processing Date : Dec 6 2014

## Contents

<b>1</b>	<b>Front</b>	<b>2</b>
<b>2</b>	<b>OBI</b>	<b>3</b>
2.1	OBI . . . . .	3
2.1.1	Images . . . . .	3
2.1.2	Bias . . . . .	3
2.1.3	Parameters . . . . .	4
2.1.4	Events . . . . .	4
2.2	Compared Parameters . . . . .	5
2.3	Star Slots . . . . .	6
2.4	FID Slots . . . . .	6
<b>A</b>	<b>Summary</b>	<b>7</b>
A.1	Status . . . . .	7
A.2	Comments . . . . .	7

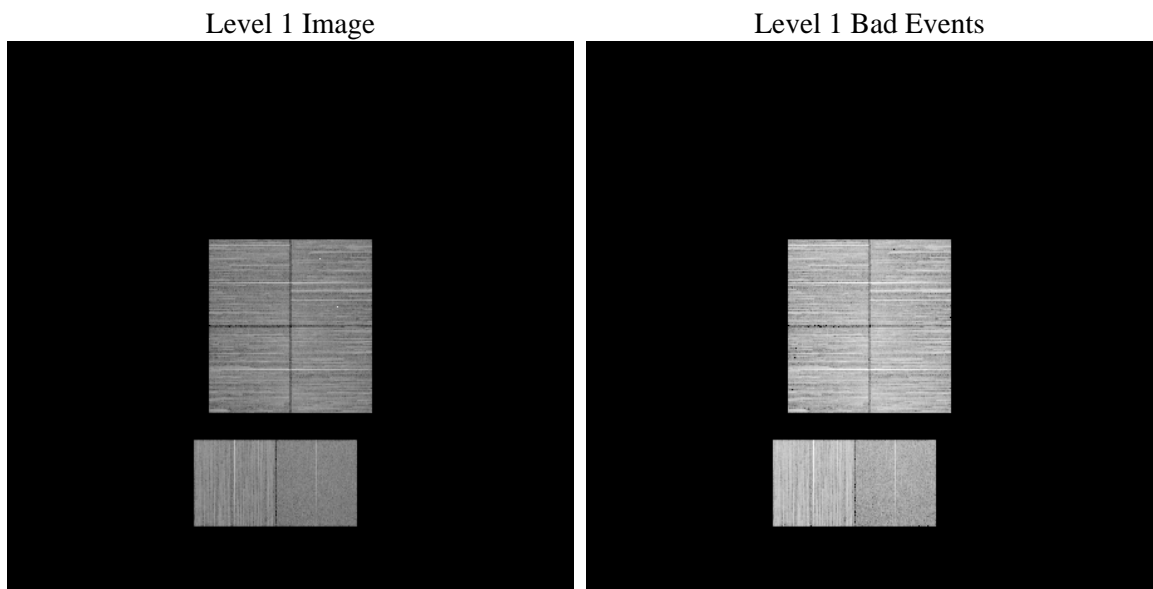
# 1 Front

seq_num	&#160	Sequence number
obs_id	52270	Observation id
title	ACIS-012367 diagnostics	Proposal title
observer	CHANDRA engineering request/realtime commanding	Principal investig
object	&#160	Source name
dtcycle	0	&#160
cycle	P	events from which exps? Prim/Second/Both
ra_targ	0.0	Observer's specified target RA [deg]
dec_targ	0.0	Observer's specified target Dec [deg]
ra_nom	80.018608143312	Nominal RA [deg]
dec_nom	-0.97719985092976	Nominal Dec [deg]
roll_nom	17.804093072203	Nominal Roll [deg]
revision	1	Processing version of data
ontime	8468.4678194523	Sum of GTIs [s]
livetime	8361.2349808232	Livetime [s]
ontime0	8470.3999685049	Sum of GTIs [s]
ontime1	8470.3999685049	Sum of GTIs [s]
ontime2	8470.3999685049	Sum of GTIs [s]
ontime3	8468.4267190099	Sum of GTIs [s]
ontime6	8470.3999685049	Sum of GTIs [s]
ontime7	8468.4678194523	Sum of GTIs [s]
l2events	159223	Number of level 2 events

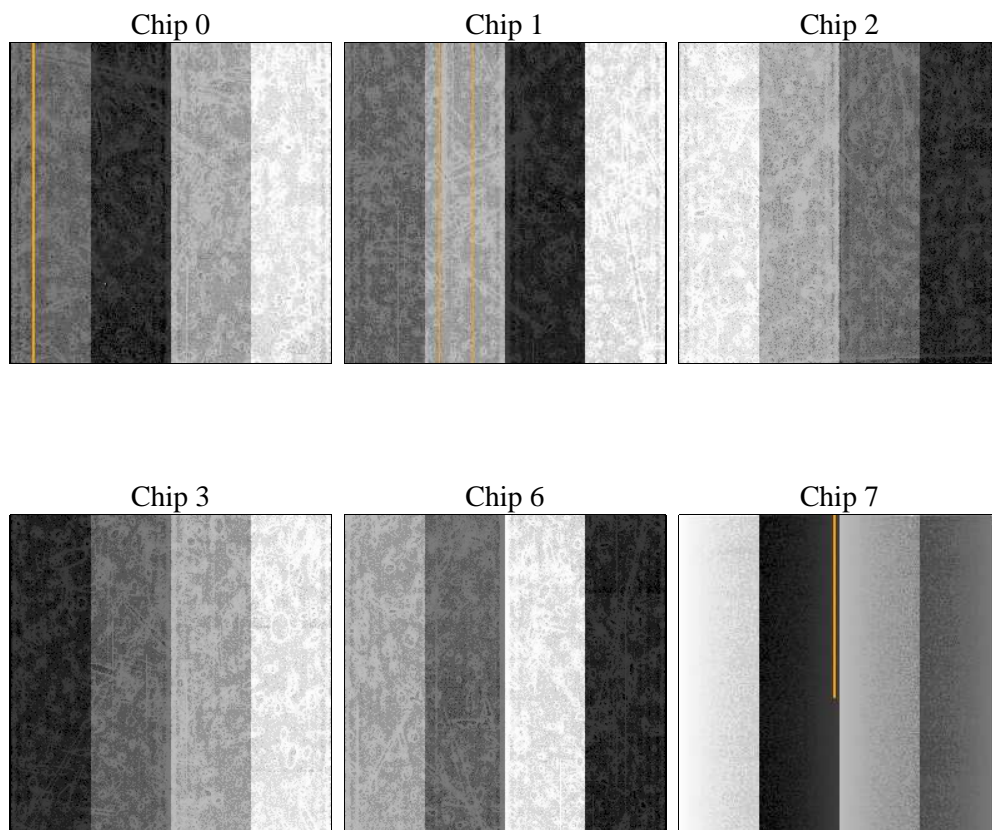
## 2 OBI

### 2.1 OBI

#### 2.1.1 Images



#### 2.1.2 Bias



### 2.1.3 Parameters

obi_num	0	Obi number	sched_exp_time	0.0	[s] Scheduled observation exposure time
ascdsver	10.3.1	Processing system revision	ontime	8468.4678194523	Sum of GTIs [s]
caldsver	4.6.4	&#160	ontime0	8470.3999685049	Sum of GTIs [s]
date	2014-12-06T20:45:43	Date and time of file creation	ontime1	8470.3999685049	Sum of GTIs [s]
revision	1	Processing version of data	ontime2	8470.3999685049	Sum of GTIs [s]
			ontime3	8468.4267190099	Sum of GTIs [s]
			ontime6	8470.3999685049	Sum of GTIs [s]
			ontime7	8468.4678194523	Sum of GTIs [s]
			l1events	857025	Number of level 1 events

### 2.1.4 Events

	ccd 0	ccd 1	ccd 2	ccd 3	ccd 6	ccd 7		ccd 0	ccd 1	ccd 2	ccd 3	ccd 6	ccd 7
level 1 events	138193	147255	142334	157538	158070	113635	grade 0 events	11496	12153	11989	12013	10739	5946
rejected events	114231	119035	118441	133408	133416	65858		8%	8%	8%	7%	6%	5%
rejected %	82%	80%	83%	84%	84%	57%	grade 1 events	58	56	61	75	43	87
								0%	0%	0%	0%	0%	0%
							grade 2 events	5302	8755	4929	5001	6229	11836
								3%	5%	3%	3%	3%	10%
							grade 3 events	1587	1507	1656	1626	1480	3443
								1%	1%	1%	1%	0%	3%
							grade 4 events	1592	1475	1600	1699	1473	3486
								1%	1%	1%	1%	0%	3%
							grade 5 events	2597	2537	2443	2909	2638	6531
								1%	1%	1%	1%	1%	5%
							grade 6 events	3985	4330	3719	3791	4733	23066
								2%	2%	2%	2%	2%	20%
							grade 7 events	111576	116442	115937	130424	130735	59240
								80%	79%	81%	82%	82%	52%

## 2.2 Compared Parameters

Parameter	Planned	Actual	Parameter	Planned	Actual
Instrument	ACIS	ACIS	Obspar format version number	7	7
Detector	ACIS-012367	ACIS-012367	Obspar file type	PREDICTED	ACTUAL
Grating	NONE	NONE	Obspar update status	NONE	UPDATED
Data mode	FAINT	FAINT	Number of optional ACIS chips dropped	0	0
Observation mode	SECONDARY	SECONDARY	On-chip summing requested	N	N
[deg] Pointing RA	0	80.01860814331229	Subarray requested	NONE	NONE
[deg] Pointing Dec	0	-0.9771998509297566	Alternating exposures requested	N	N
[deg] Pointing Roll	0.0	17.8040930722029	[s] Primary exposure time	3.2	3.2
[mm] SIM focus pos	-1.429586	-1.428180813131781			
[mm] SIM defocus	0.1037507710433287	0.1051558262725154			
[mm] SIM translation stage pos	250.455976	250.466033080201			
[mm] SIM translation stage offset	0	-0.01005468664627074			
[s] Observation start time (MET)	534204009.063817	534204008.03882			
Observation start date	2014-12-05T22:00:09	2014-12-05T22:00:08			
[s] Observation end time (MET)	534216048.714487	534216047.68949			
Observation end date	2014-12-06T01:20:49	2014-12-06T01:20:47			
Read mode	TIMED	TIMED			

## 2.3 Star Slots

## 2.4 FID Slots

## A Summary

### A.1 Status

V&V Scientist	Jen Lauer
V&V Date (YYYY-MM-DD)	2014.12.08
V&V Edition	1
V&V Disposition and Status	OK
V&V Charge Time	8.4684678194523

### A.2 Comments