

# V&V Reference Report

## L2 ASCDS Version : 10.3.3

Observation 51900 - L2 Version 1  
Chandra X-Ray Center

L2 Processing Date : May 11 2015

## Contents

<b>1</b>	<b>Front</b>	<b>2</b>
<b>2</b>	<b>OBI</b>	<b>3</b>
2.1	OBI . . . . .	3
2.1.1	Images . . . . .	3
2.1.2	Bias . . . . .	3
2.1.3	Parameters . . . . .	4
2.1.4	Events . . . . .	4
2.2	Compared Parameters . . . . .	5
2.3	Star Slots . . . . .	6
2.4	FID Slots . . . . .	6
<b>A</b>	<b>Summary</b>	<b>7</b>
A.1	Status . . . . .	7
A.2	Comments . . . . .	7

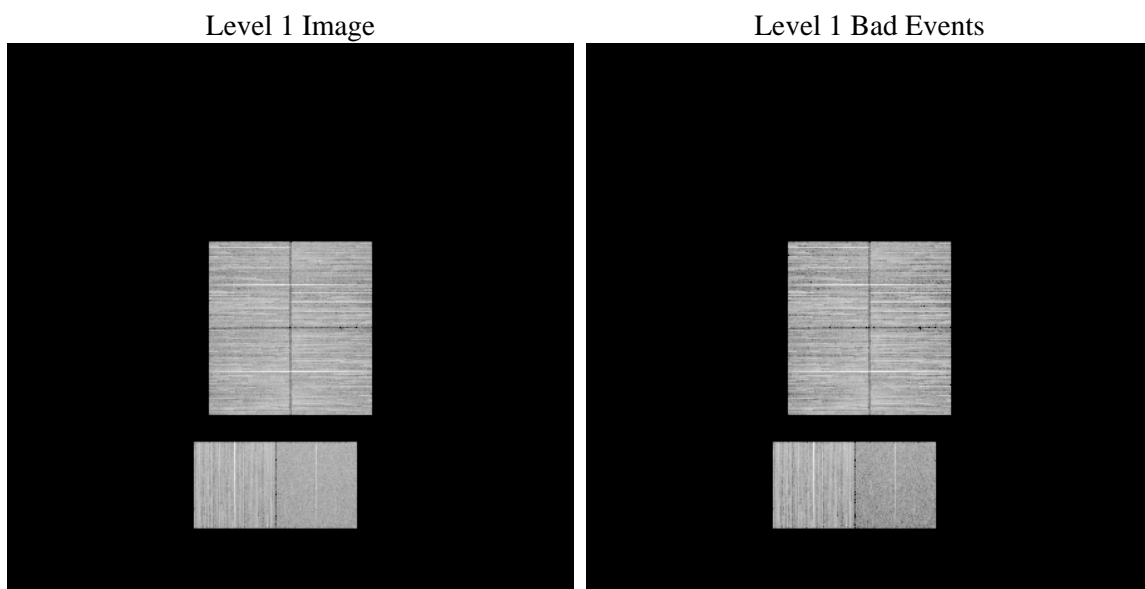
# 1 Front

seq_num	&#160	Sequence number
obs_id	51900	Observation id
title	ACIS-012367 diagnostics	Proposal title
observer	CHANDRA engineering request/realtime commanding	Principal investig
object	&#160	Source name
dtcycle	0	&#160
cycle	P	events from which exps? Prim/Second/Both
ra_targ	0.0	Observer's specified target RA [deg]
dec_targ	0.0	Observer's specified target Dec [deg]
ra_nom	221.03714401548	Nominal RA [deg]
dec_nom	-42.990155645321	Nominal Dec [deg]
roll_nom	347.21208815526	Nominal Roll [deg]
revision	1	Processing version of data
ontime	8259.2001230717	Sum of GTIs [s]
livetime	8154.6171580201	Livetime [s]
ontime0	8259.2001230717	Sum of GTIs [s]
ontime1	8259.2001230717	Sum of GTIs [s]
ontime2	8259.2001230717	Sum of GTIs [s]
ontime3	8259.2001230717	Sum of GTIs [s]
ontime6	8259.2001230717	Sum of GTIs [s]
ontime7	8259.2001230717	Sum of GTIs [s]
l2events	142851	Number of level 2 events

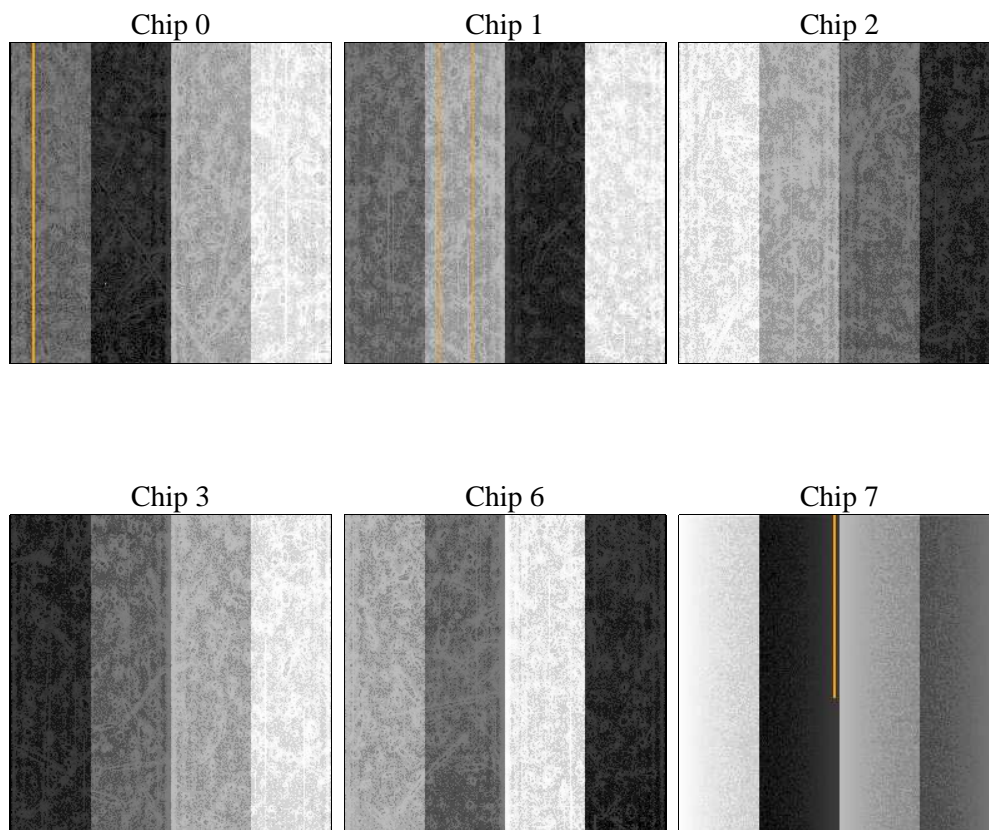
## 2 OBI

### 2.1 OBI

#### 2.1.1 Images



#### 2.1.2 Bias



### 2.1.3 Parameters

obi_num	0	Obi number	sched_exp_time	0.0	[s] Scheduled observation exposure time
ascdsver	10.3.3	Processing system revision	ontime	8259.2001230717	Sum of GTIs [s]
caldbver	4.6.7	&#160	ontime0	8259.2001230717	Sum of GTIs [s]
date	2015-05-11T10:08:33	Date and time of file creation	ontime1	8259.2001230717	Sum of GTIs [s]
revision	1	Processing version of data	ontime2	8259.2001230717	Sum of GTIs [s]
			ontime3	8259.2001230717	Sum of GTIs [s]
			ontime6	8259.2001230717	Sum of GTIs [s]
			ontime7	8259.2001230717	Sum of GTIs [s]
			l1events	808335	Number of level 1 events

### 2.1.4 Events

	ccd 0	ccd 1	ccd 2	ccd 3	ccd 6	ccd 7		ccd 0	ccd 1	ccd 2	ccd 3	ccd 6	ccd 7
level 1 events	137558	135533	140595	145618	140651	108380	grade 0 events	9951	9810	10480	10989	9944	5395
rejected events	116375	113818	119625	123885	118667	63780		7%	7%	7%	7%	7%	4%
rejected %	84%	83%	85%	85%	84%	58%	grade 1 events	62	45	65	70	51	61
								0%	0%	0%	0%	0%	0%
							grade 2 events	4791	5410	4284	4401	5095	11154
								3%	3%	3%	3%	3%	10%
							grade 3 events	1459	1339	1492	1479	1369	3221
								1%	0%	1%	1%	0%	2%
							grade 4 events	1443	1311	1410	1482	1358	3206
								1%	0%	1%	1%	0%	2%
							grade 5 events	2520	2513	2415	2823	2673	6682
								1%	1%	1%	1%	1%	6%
							grade 6 events	3539	3845	3304	3382	4218	21624
								2%	2%	2%	2%	2%	19%
							grade 7 events	113793	111260	117145	120992	115943	57037
								82%	82%	83%	83%	82%	52%

## 2.2 Compared Parameters

Parameter	Planned	Actual	Parameter	Planned	Actual
Instrument	ACIS	ACIS	Obspar format version number	7	7
Detector	ACIS-012367	ACIS-012367	Obspar file type	PREDICTED	ACTUAL
Grating	NONE	NONE	Obspar update status	NONE	UPDATED
Data mode	FAINT	FAINT	Number of optional ACIS chips dropped	0	0
Observation mode	SECONDARY	SECONDARY	On-chip summing requested	N	N
[deg] Pointing RA	0	221.0371440154816	Subarray requested	NONE	NONE
[deg] Pointing Dec	0	-42.99015564532125	Alternating exposures requested	N	N
[deg] Pointing Roll	0.0	347.2120881552637	[s] Primary exposure time	3.2	3.2
[mm] SIM focus pos	-1.429586	-1.428180813131781			
[mm] SIM defocus	0.1037507710433287	0.1051558262725154			
[mm] SIM translation stage pos	250.455976	250.466033080201			
[mm] SIM translation stage offset	0	-0.01005468664627074			
[s] Observation start time (MET)	547649141.865431	547649140.84043			
Observation start date	2015-05-10T12:45:42	2015-05-10T12:45:40			
[s] Observation end time (MET)	547660757.166082	547660756.14108			
Observation end date	2015-05-10T15:59:17	2015-05-10T15:59:16			
Read mode	TIMED	TIMED			

## 2.3 Star Slots

## 2.4 FID Slots

## A Summary

### A.1 Status

V&V Scientist	Joy Nichols
V&V Date (YYYY-MM-DD)	2015.05.11
V&V Edition	1
V&V Disposition and Status	OK
V&V Charge Time	8.2592001230717

### A.2 Comments