

# V&V Reference Report

## L2 ASCDS Version : 7.6.7.1

Observation 4950 - L2 Version 001  
Chandra X-Ray Center

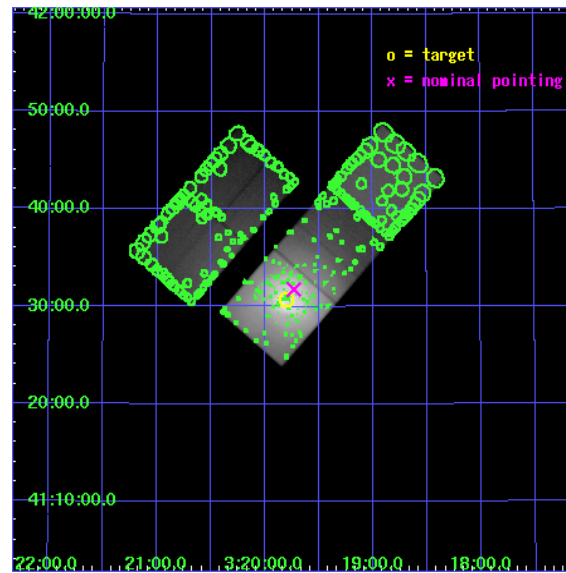
L2 Processing Date : Apr 15 2006

## Contents

<b>1</b>	<b>Front</b>	<b>2</b>
<b>2</b>	<b>OBI</b>	<b>3</b>
2.1	OBI . . . . .	3
2.1.1	Images . . . . .	3
2.1.2	Bias . . . . .	3
2.1.3	Parameters . . . . .	4
2.1.4	Events . . . . .	4
2.2	Compared Parameters . . . . .	5
2.3	Aspect . . . . .	6
2.4	Star Slots . . . . .	9
2.4.1	Slot 3 . . . . .	9
2.4.2	Slot 4 . . . . .	10
2.4.3	Slot 5 . . . . .	11
2.4.4	Slot 6 . . . . .	12
2.4.5	Slot 7 . . . . .	13
2.5	FID Slots . . . . .	14
2.5.1	Slot 0 . . . . .	14
2.5.2	Slot 1 . . . . .	15
2.5.3	Slot 2 . . . . .	16
<b>3</b>	<b>Point Sources</b>	<b>17</b>
<b>A</b>	<b>Summary</b>	<b>18</b>
A.1	Status . . . . .	18
A.2	Comments . . . . .	18

# 1 Front

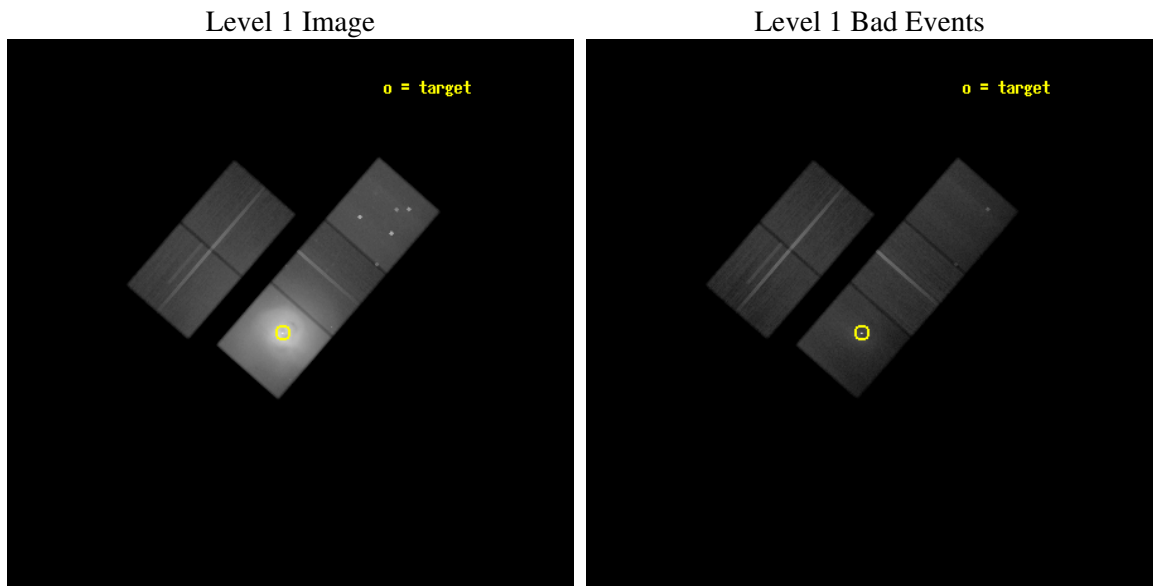
seq_num	800399
obs_id	4950
title	A Megasecond Image of the Core of the Perseus Cluster
observer	Prof Andrew Fabian
object	Abell 426
dtcycle	0
cycle	P
ra_targ	49.950833
dec_targ	41.511722
ra_nom	49.933195097669
dec_nom	41.52947353681
roll_nom	131.12759113259
revision	2
ontime	98199.694798023
livetime	96916.643491923
ontime2	98014.376036376
ontime3	98061.491038978
ontime5	98598.599810421
ontime6	98089.76012072
ontime7	98199.694798023
l2events	10127361



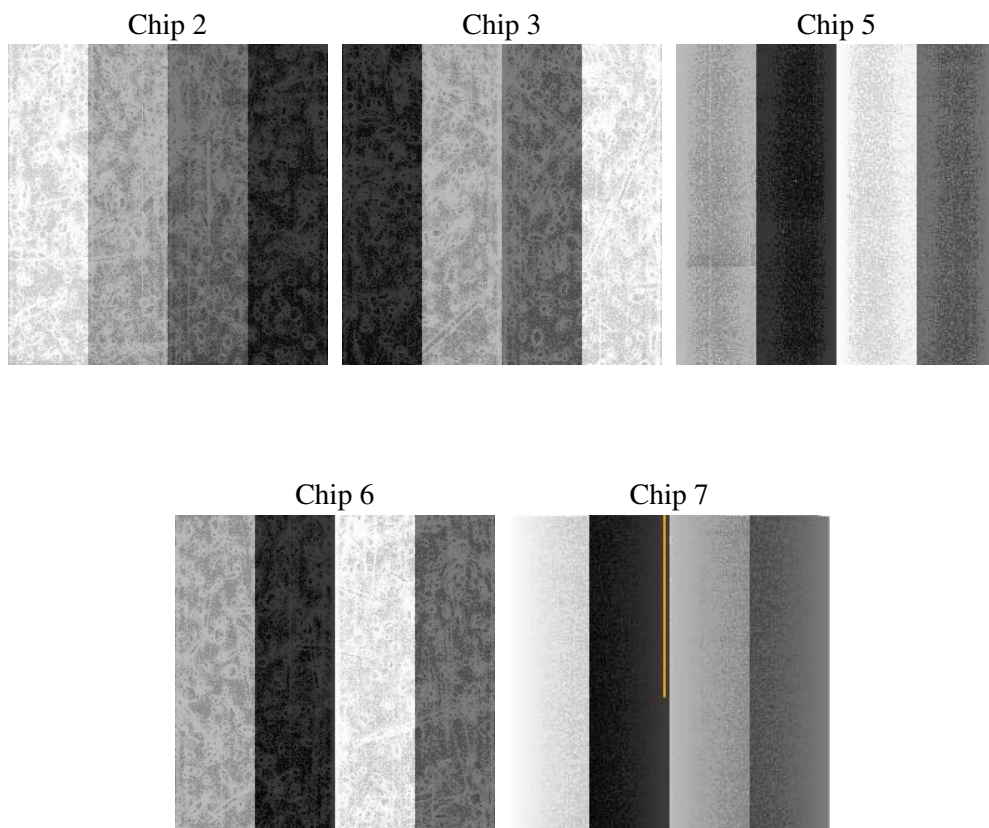
## 2 OBI

### 2.1 OBI

#### 2.1.1 Images



#### 2.1.2 Bias



### 2.1.3 Parameters

obi_num	0
ascdsver	7.6.7.1
caldsver	3.2.1
date	2006-04-15T10:05:00
revision	2

sched_exp_time	98821.840000
ontime	98203.756216019
ontime2	98018.437454373
ontime3	98065.552456975
ontime5	98602.66120851
ontime6	98093.821538717
ontime7	98203.756216019
l1events	13260490

### 2.1.4 Events

	ccd 2	ccd 3	ccd 5	ccd 6	ccd 7
level 1 events	901724	1040318	1338272	1568584	8411592
rejected events	619253	591898	493296	608420	563238
rejected %	68%	56%	36%	38%	6%

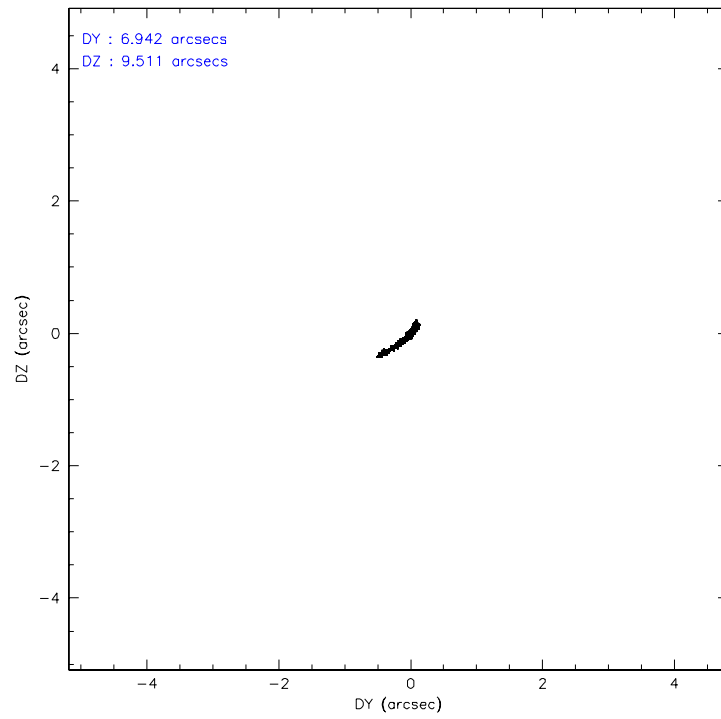
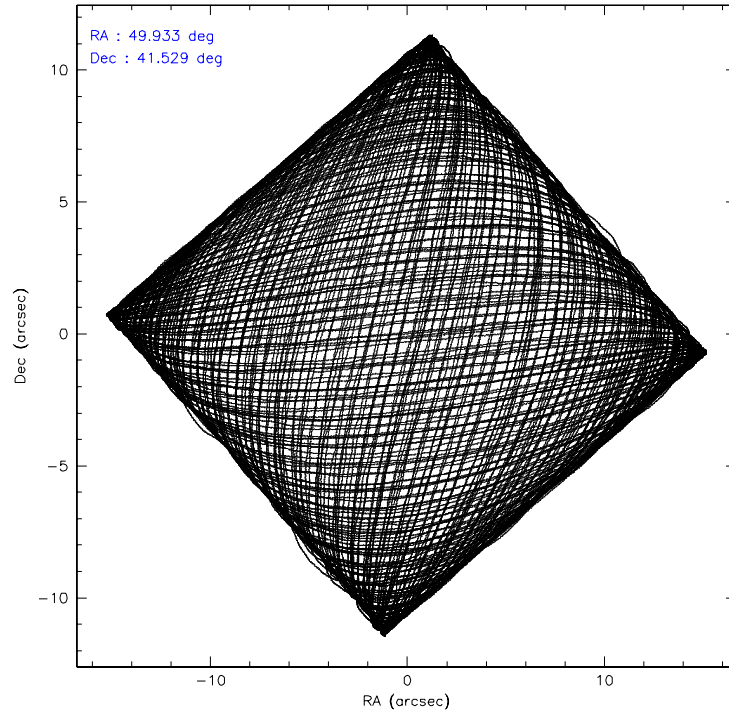
	ccd 2	ccd 3	ccd 5	ccd 6	ccd 7
grade 0 events	202313	336305	151173	744572	1923694
	22%	32%	11%	47%	22%
grade 1 events	1321	1975	2806	3318	5028
	0%	0%	0%	0%	0%
grade 2 events	36109	52305	263944	106093	2232430
	4%	5%	19%	6%	26%
grade 3 events	13597	19213	30804	34759	835303
	1%	1%	2%	2%	9%
grade 4 events	13706	19025	30170	34925	818314
	1%	1%	2%	2%	9%
grade 5 events	21517	26146	51818	28516	112842
	2%	2%	3%	1%	1%
grade 6 events	16757	21589	368960	39858	2038943
	1%	2%	27%	2%	24%
grade 7 events	596404	563760	438597	576543	445038
	66%	54%	32%	36%	5%

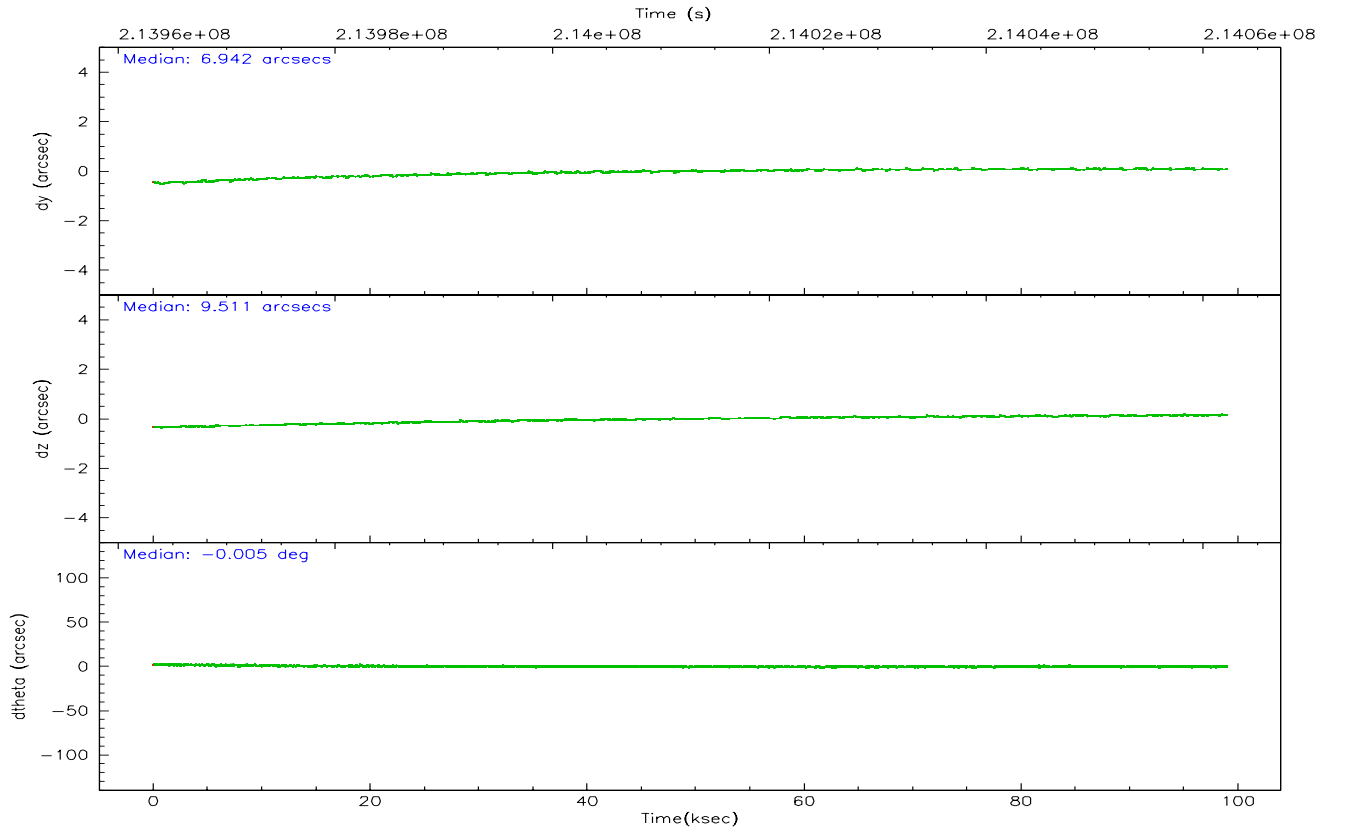
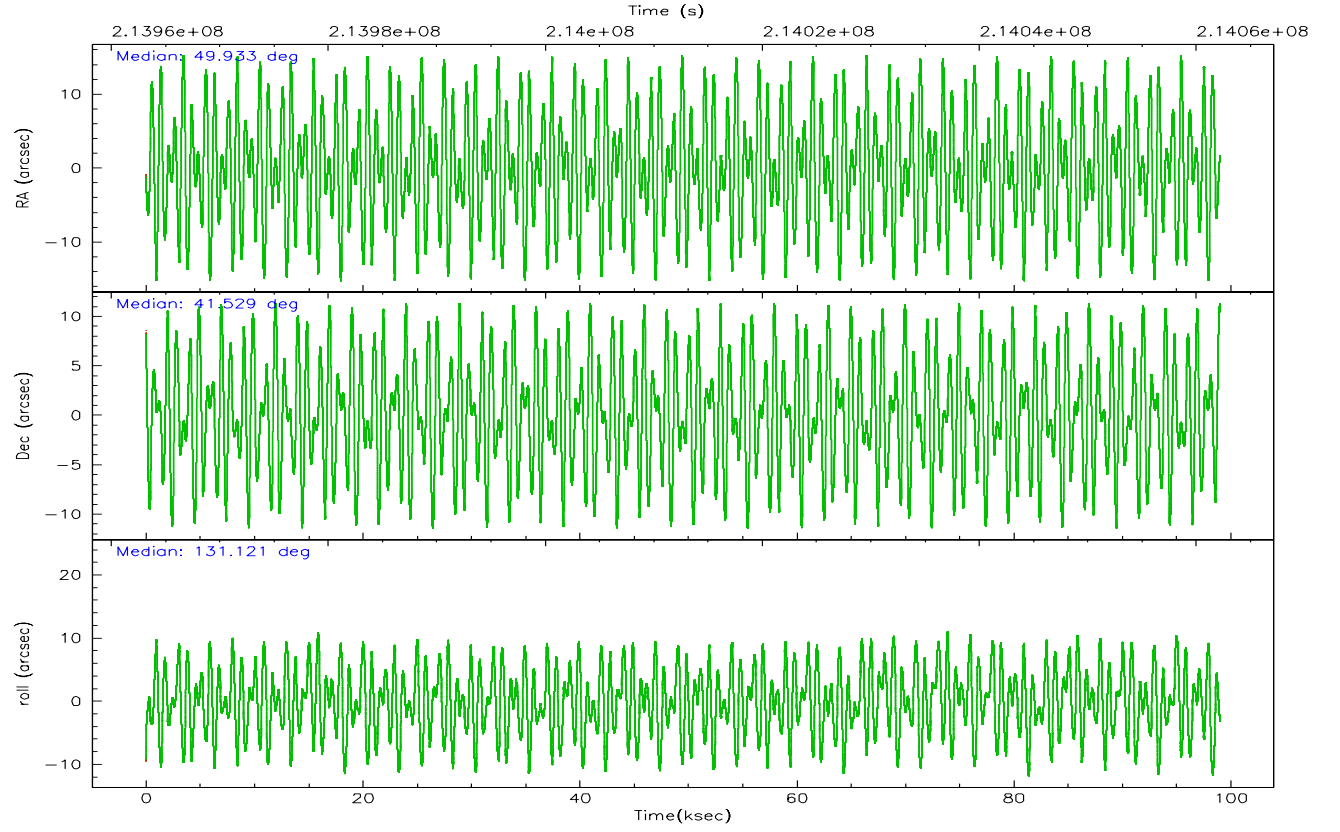


## 2.2 Compared Parameters

Parameter	Planned	Actual	Parameter	Planned	Actual
Instrument	ACIS	ACIS	Obspar format version number	6	6
Detector	ACIS-23567	ACIS-23567	Obspar file type	PREDICTED	ACTUAL
Grating	NONE	NONE	Obspar update status	NONE	UPDATED
Data mode	FAINT	FAINT	On-chip summing requested	N	N
Observation mode	POINTING	POINTING	Subarray requested	NONE	NONE
Pointing RA	49.967749	49.93319509766858	Alternating exposures requested	N	N
Pointing Dec	41.521022	41.52947353681007	Primary exposure time	0.000000	3.1
Pointing Roll	130.948054	131.1275911325943			
SIM focus pos (mm)	-0.684267	-0.6828225247311905			
SIM defocus (mm)	0	0.001444936568705701			
SIM translation stage pos (mm)	-190.132523	-190.1400660498719			
SIM translation stage offset (mm)	0	0.00754346686406393			
Observation start time	213963388.184000	213963012.08689			
Observation start date	2004-10-12T10:15:24	2004-10-12T10:10:12			
Observation end time	214062210.184000	214062421.20384			
Observation end date	2004-10-13T13:42:26	2004-10-13T13:47:01			
Read mode	TIMED	TIMED			

## 2.3 Aspect



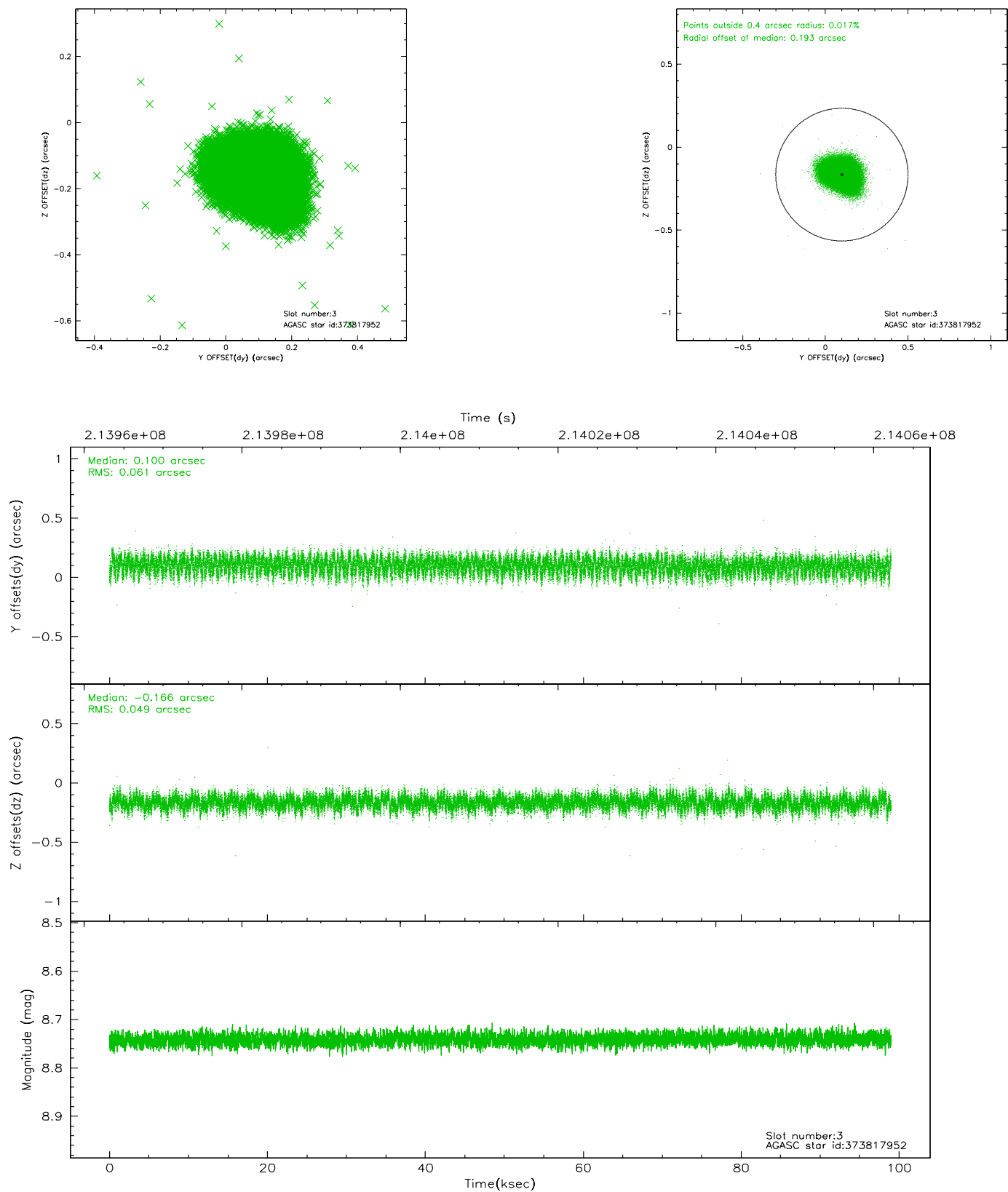


### Slot Statistics

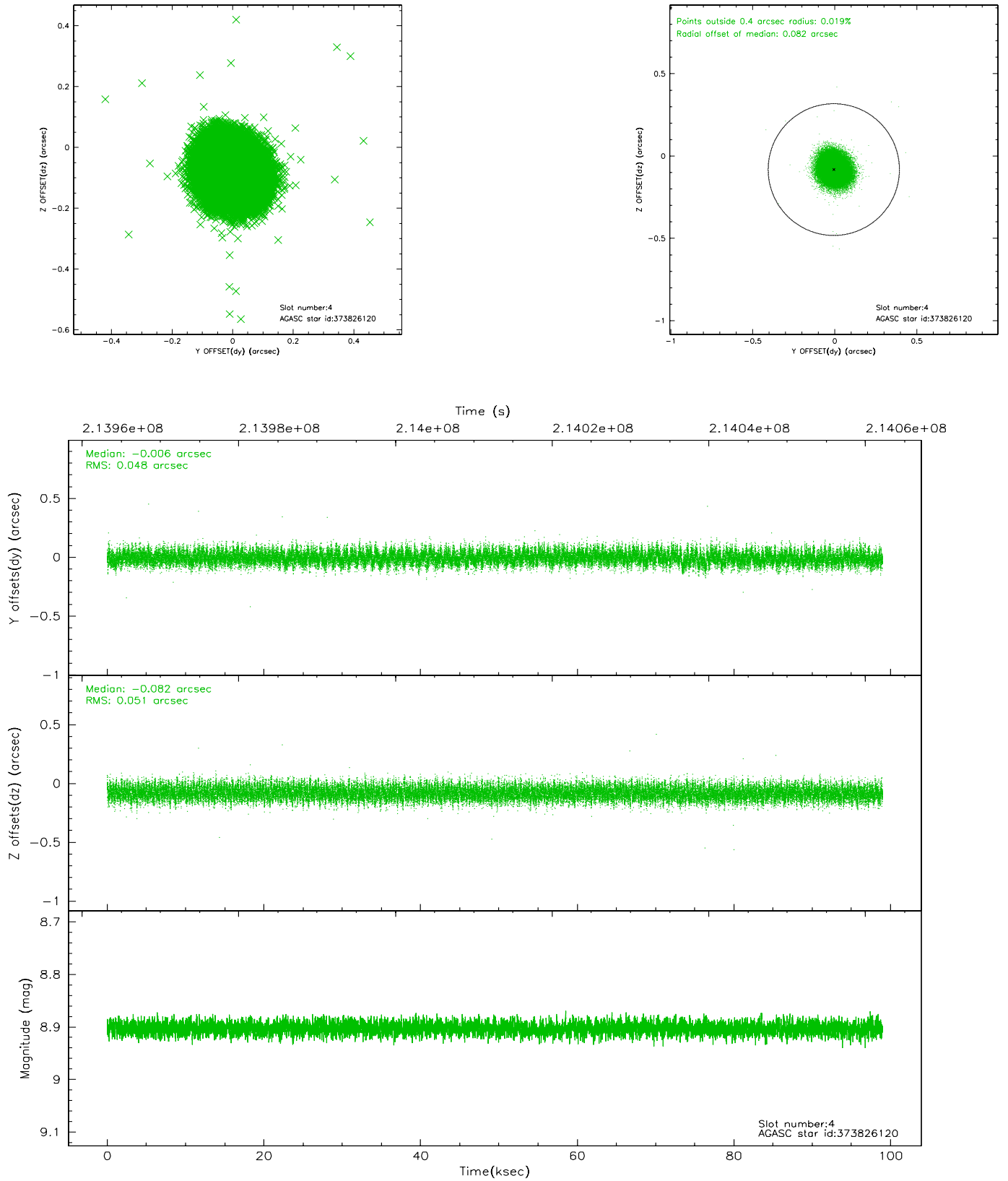
slot	status	id	mag	n_pts	med_dy	med_dz	dr1	dr2	ra	dec	mean_y	mean_z
0	FID	ACIS-S-1	7.19	24147	0.023	0.019	0.009	0.017	0.000000	0.000000	936.41	-1726.33
1	FID	ACIS-S-2	7.10	24149	-0.042	-0.005	0.006	0.010	0.000000	0.000000	-759.60	-1730.80
2	FID	ACIS-S-6	7.35	24149	-0.001	-0.008	0.009	0.017	0.000000	0.000000	402.10	815.07
3	GUIDE	373817952	8.74	48280	0.100	-0.166	0.084	0.132	49.913424	40.978510	-1378.26	1391.40
4	GUIDE	373826120	8.90	48272	-0.006	-0.082	0.074	0.118	49.738165	41.186341	-501.71	1259.01
5	GUIDE	374352808	8.78	48282	-0.106	0.101	0.095	0.146	49.969955	42.208621	1866.06	-1626.21
6	GUIDE	376057824	8.36	48275	-0.017	0.160	0.075	0.118	50.665569	41.926280	-116.99	-2372.44
7	GUIDE	374345008	9.36	47980	0.034	-0.021	0.134	0.215	48.768668	41.619367	2398.96	2191.15

## 2.4 Star Slots

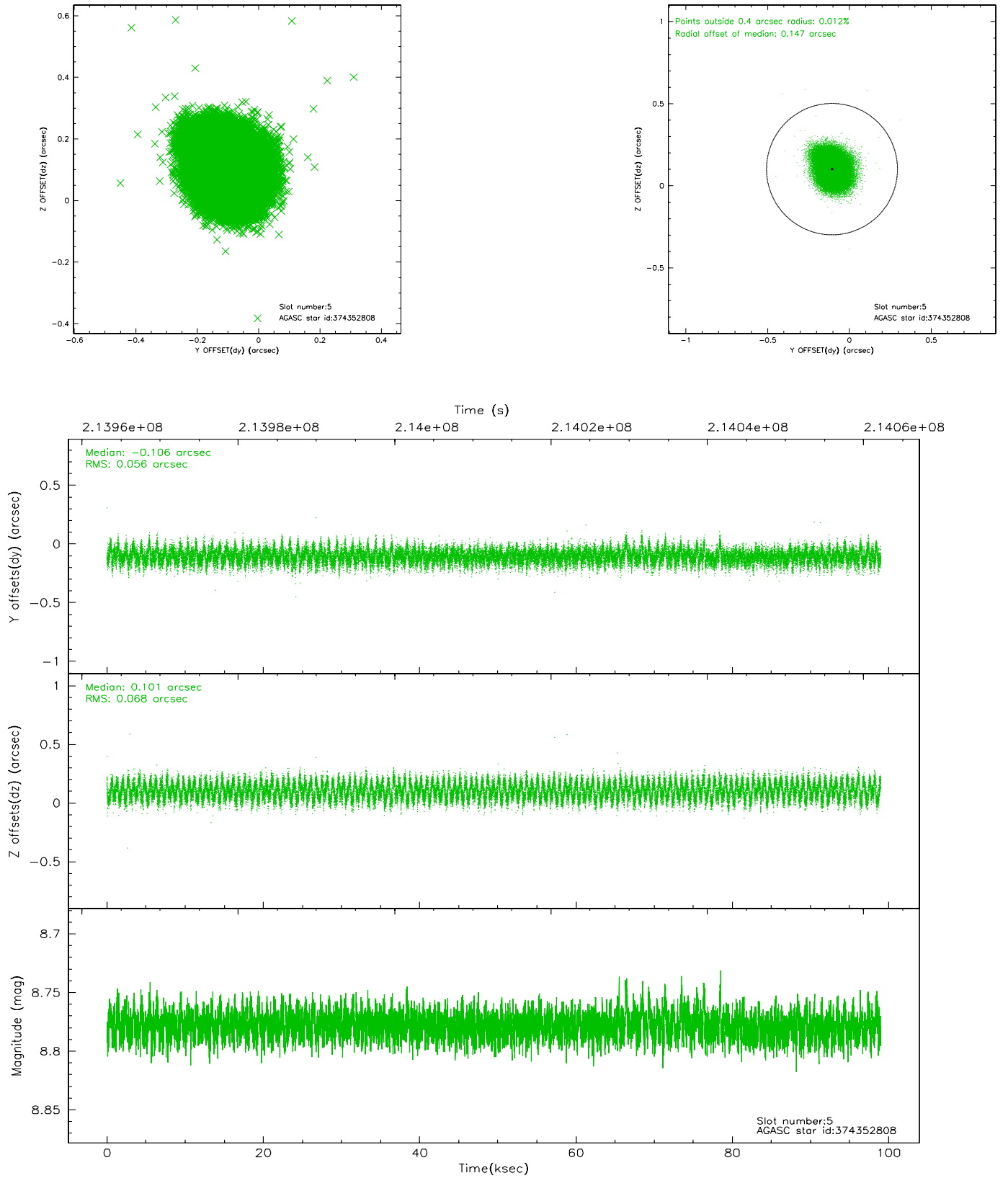
### 2.4.1 Slot 3



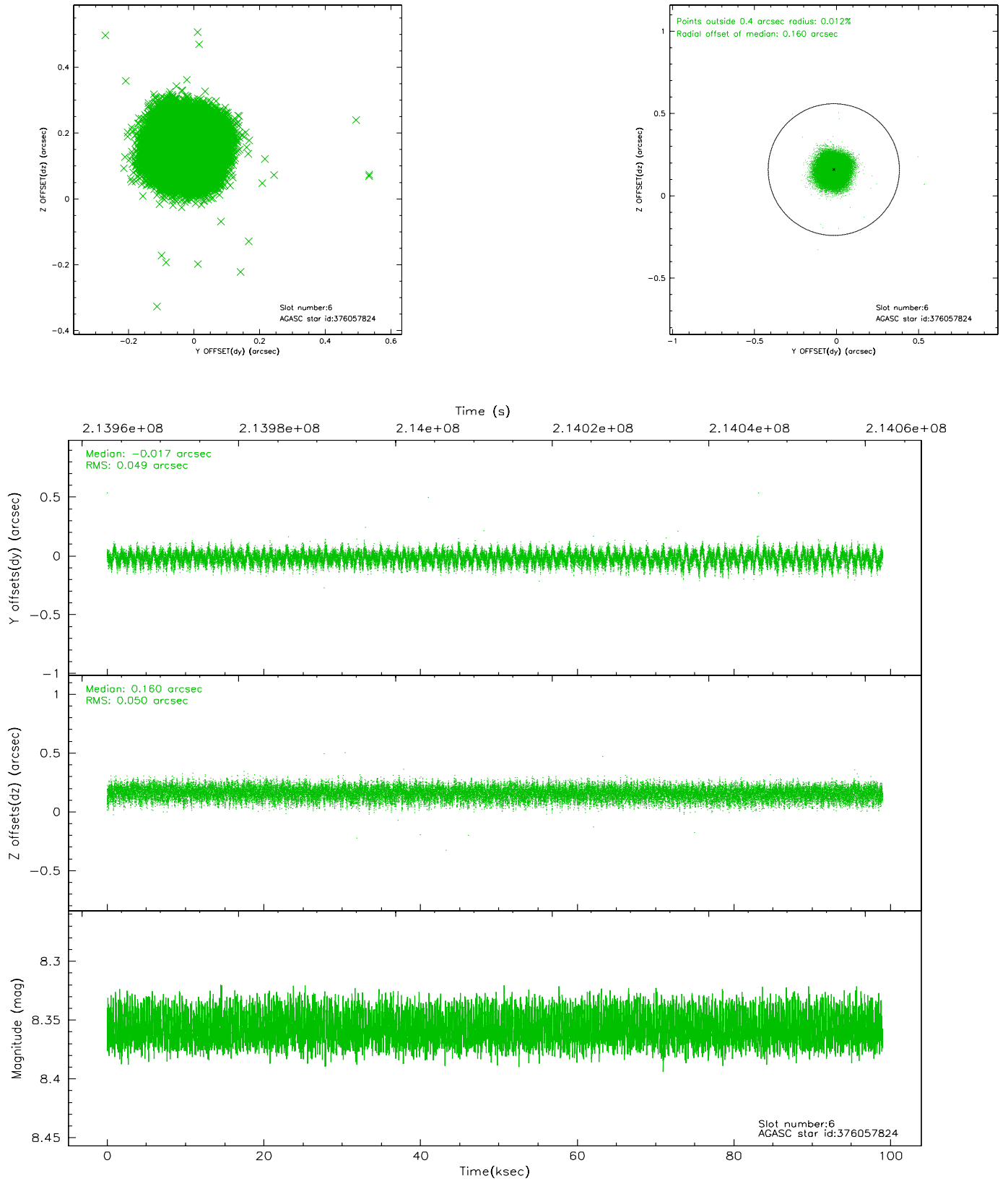
## 2.4.2 Slot 4



### 2.4.3 Slot 5

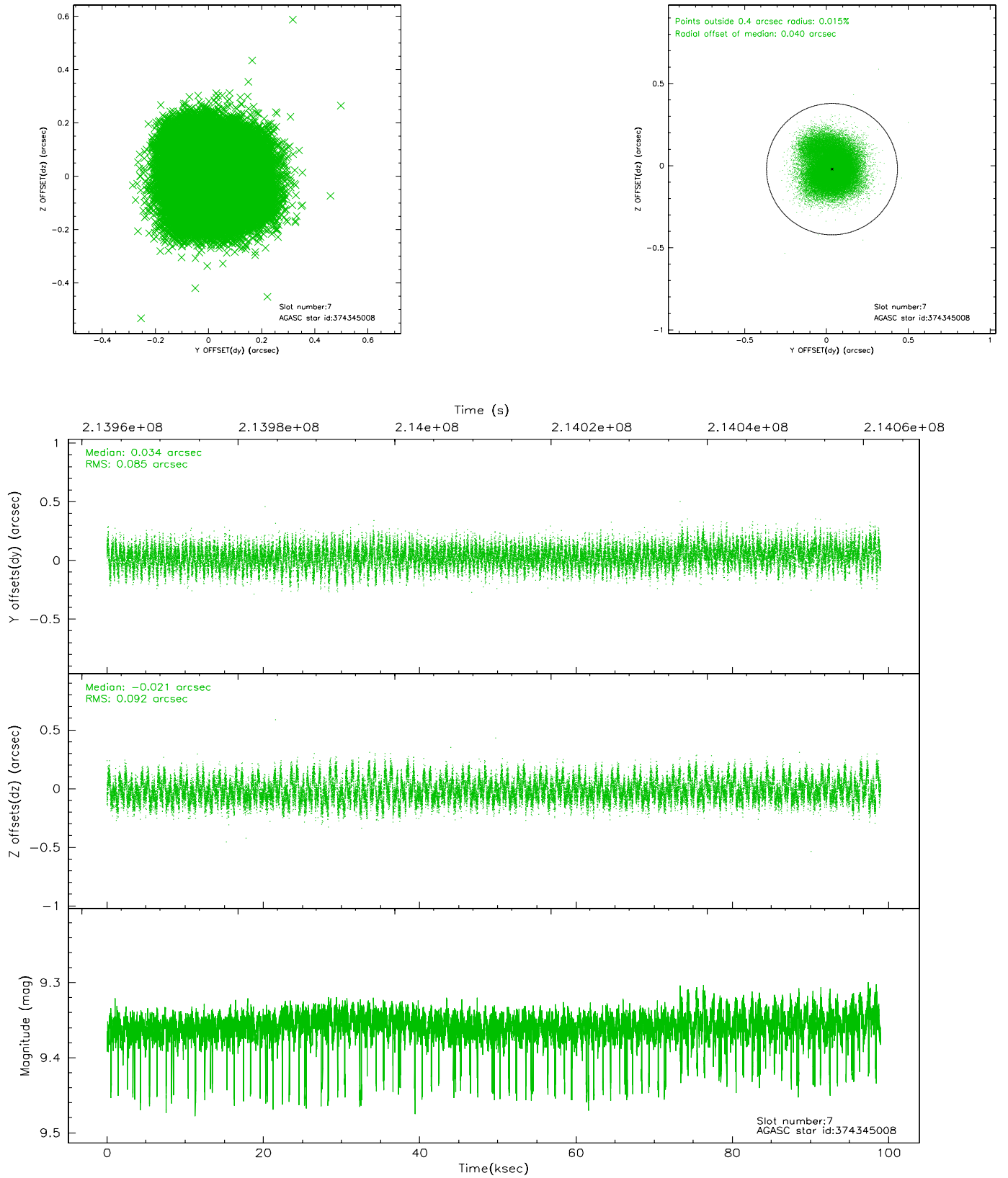


## 2.4.4 Slot 6



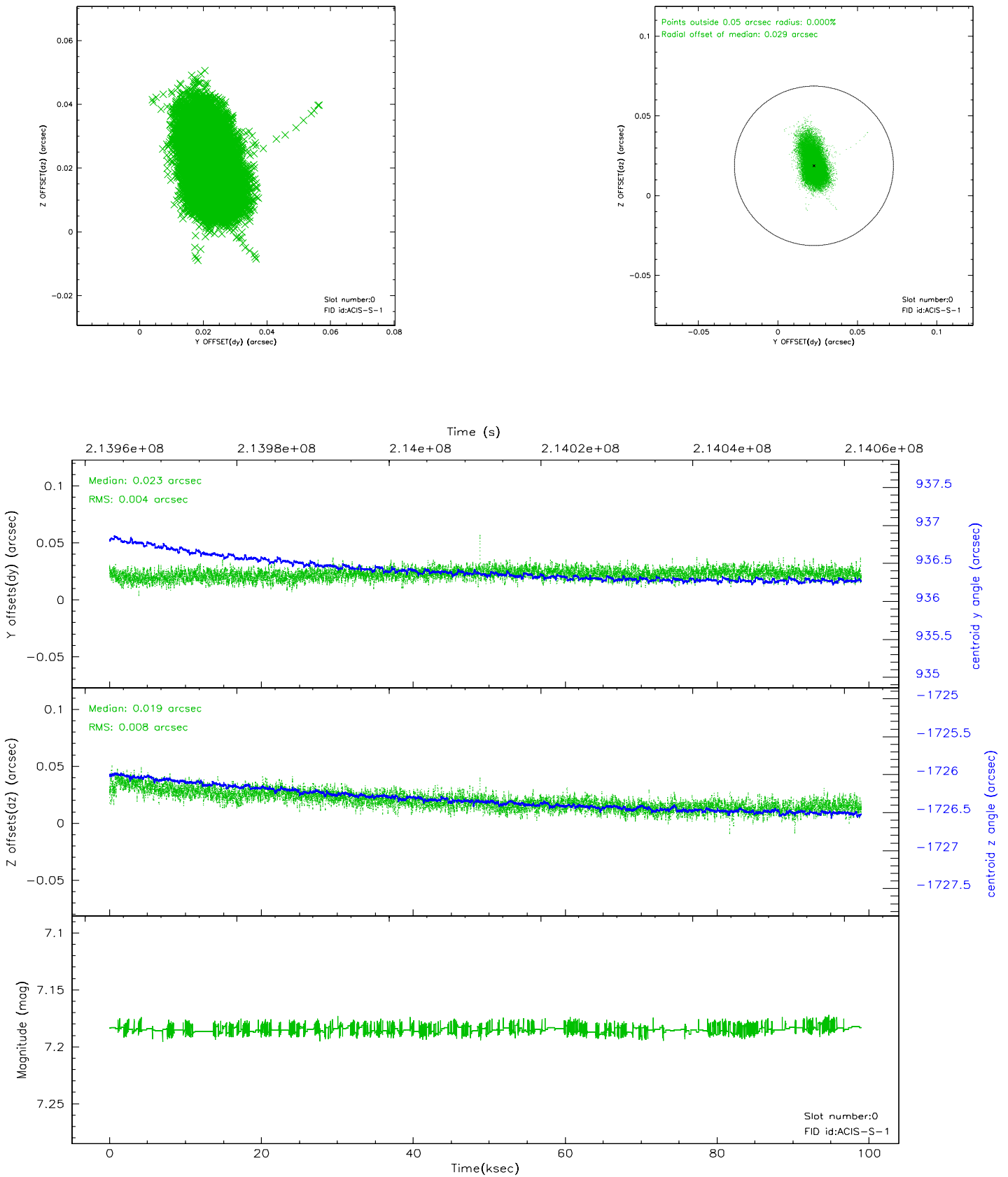


## 2.4.5 Slot 7

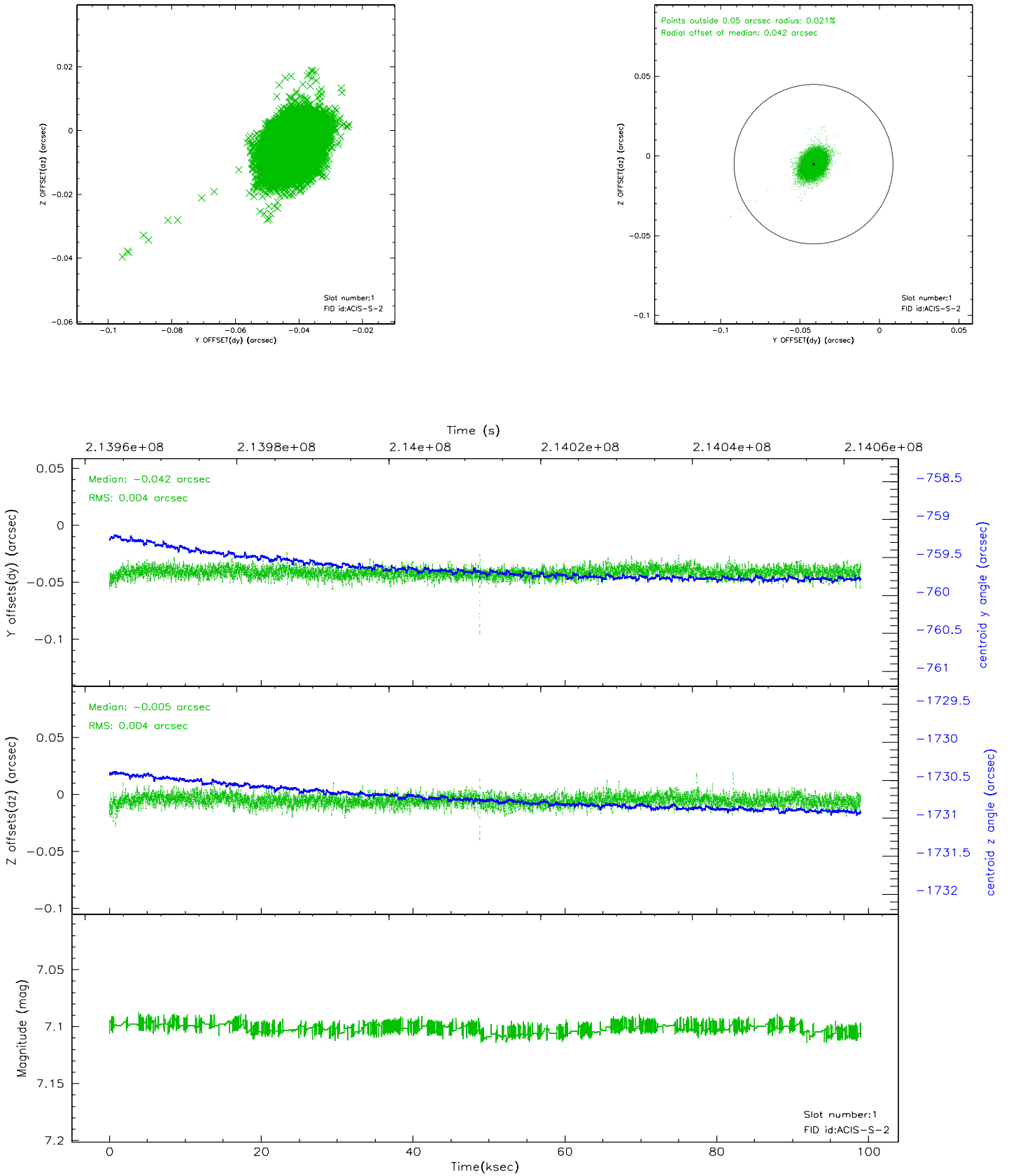


## 2.5 FID Slots

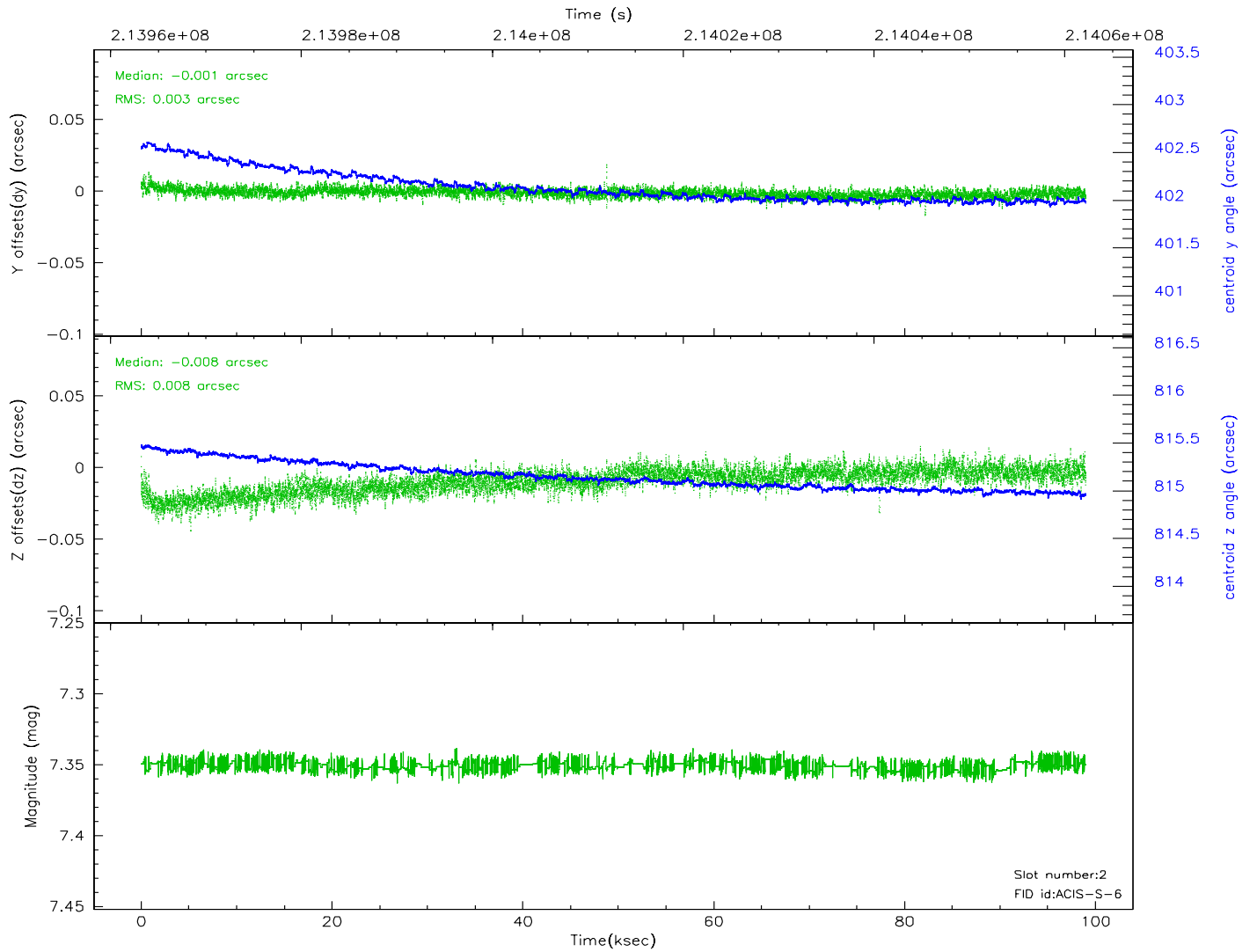
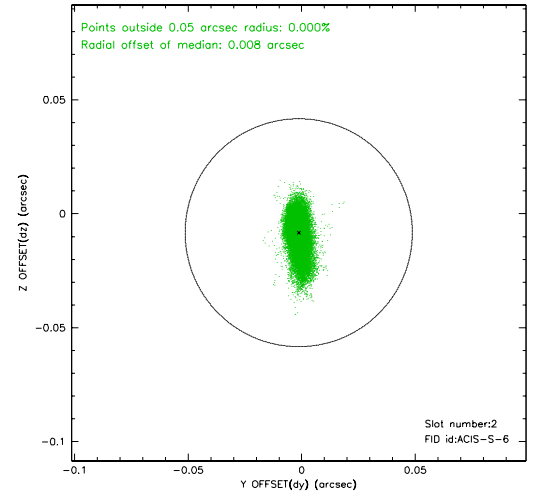
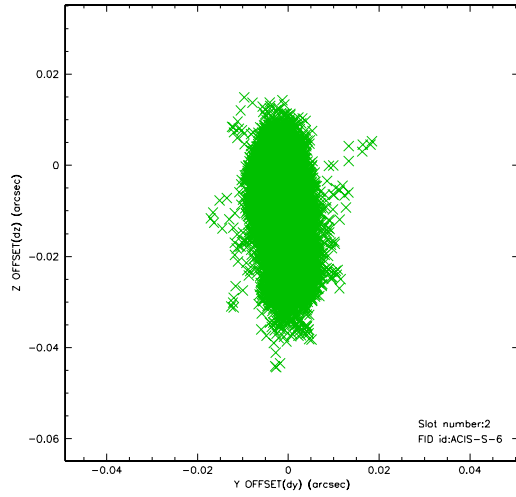
### 2.5.1 Slot 0



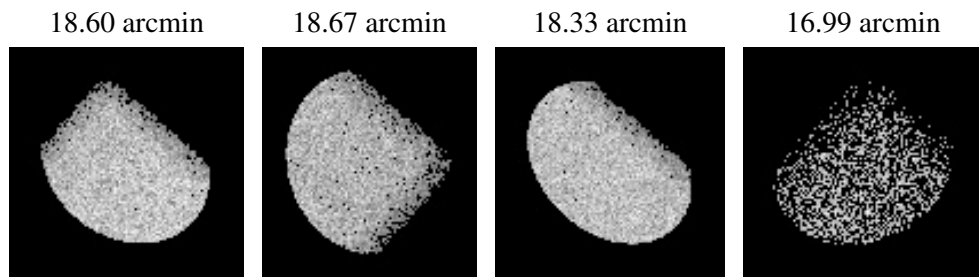
## 2.5.2 Slot 1



### 2.5.3 Slot 2



### 3 Point Sources



## A Summary

### A.1 Status

V&V Scientist	Beth Sundheim
V&V Date (YYYY-MM-DD)	2006.04.16
V&V Edition	1
V&V Disposition and Status	OK
V&V Charge Time	98.199

### A.2 Comments