

V&V Reference Report

L2 ASCDS Version : 7.6.8

Observation 4930 - L2 Version 001
Chandra X-Ray Center

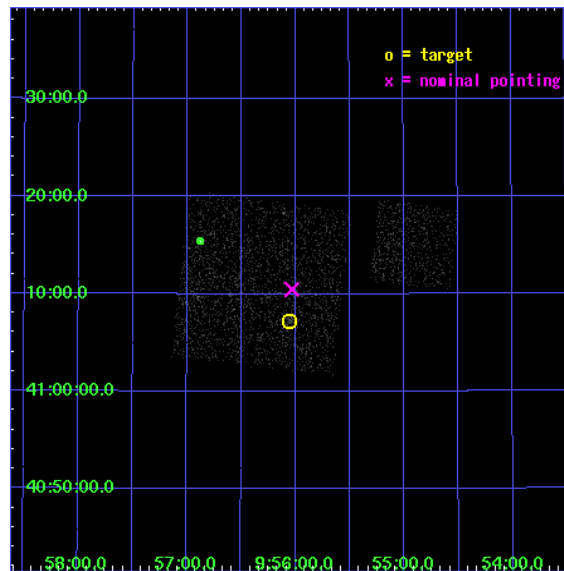
L2 Processing Date : Jun 22 2006

Contents

1	Front	2
2	OBI	3
2.1	OBI	3
2.1.1	Images	3
2.1.2	Bias	3
2.1.3	Parameters	4
2.1.4	Events	4
2.2	Compared Parameters	5
2.3	Aspect	6
2.4	Star Slots	9
2.4.1	Slot 3	9
2.4.2	Slot 4	10
2.4.3	Slot 5	11
2.4.4	Slot 6	12
2.4.5	Slot 7	13
2.5	FID Slots	14
2.5.1	Slot 0	14
2.5.2	Slot 1	15
2.5.3	Slot 2	16
3	Point Sources	17
A	Summary	18
A.1	Status	18
A.2	Comments	18

1 Front

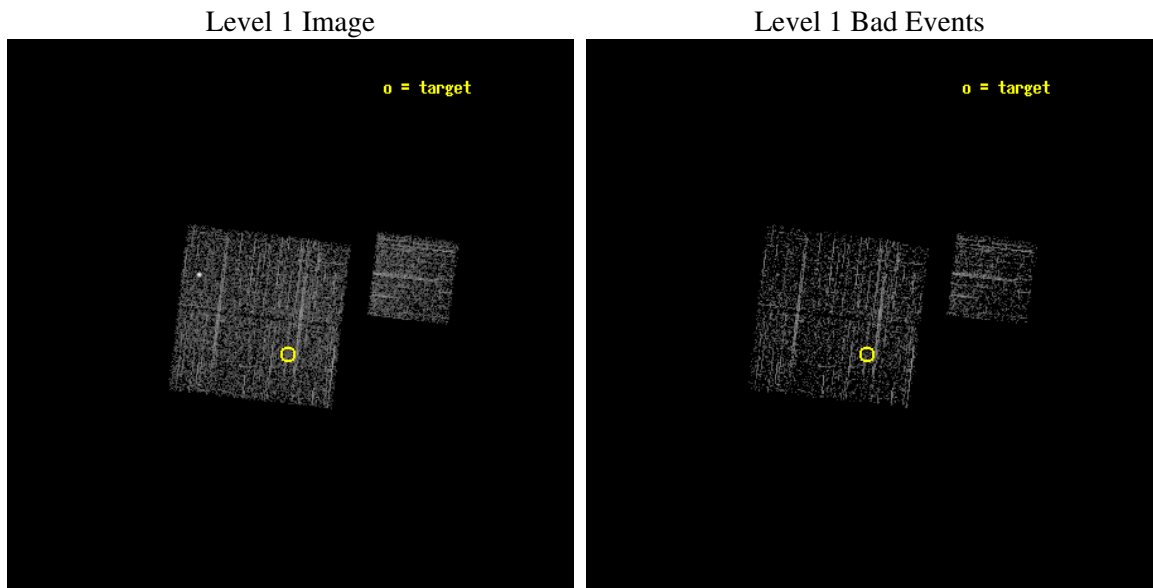
seq_num	800381
obs_id	4930
title	Chandra snapshot survey of 10 distant clusters of galaxies
observer	Dr. Stephen Murray
object	CL0956+4107
dtcycle	0
cycle	P
ra_targ	149.014167
dec_targ	41.120556
ra_nom	149.00814641038
dec_nom	41.174665187266
roll_nom	96.75661351452
revision	2
ontime	1720.4999966919
livetime	1698.0203976215
ontime0	1720.4999966919
ontime1	1720.4999966919
ontime2	1720.4999966919
ontime3	1720.4999966919
ontime6	1720.4999966919
l2events	4649



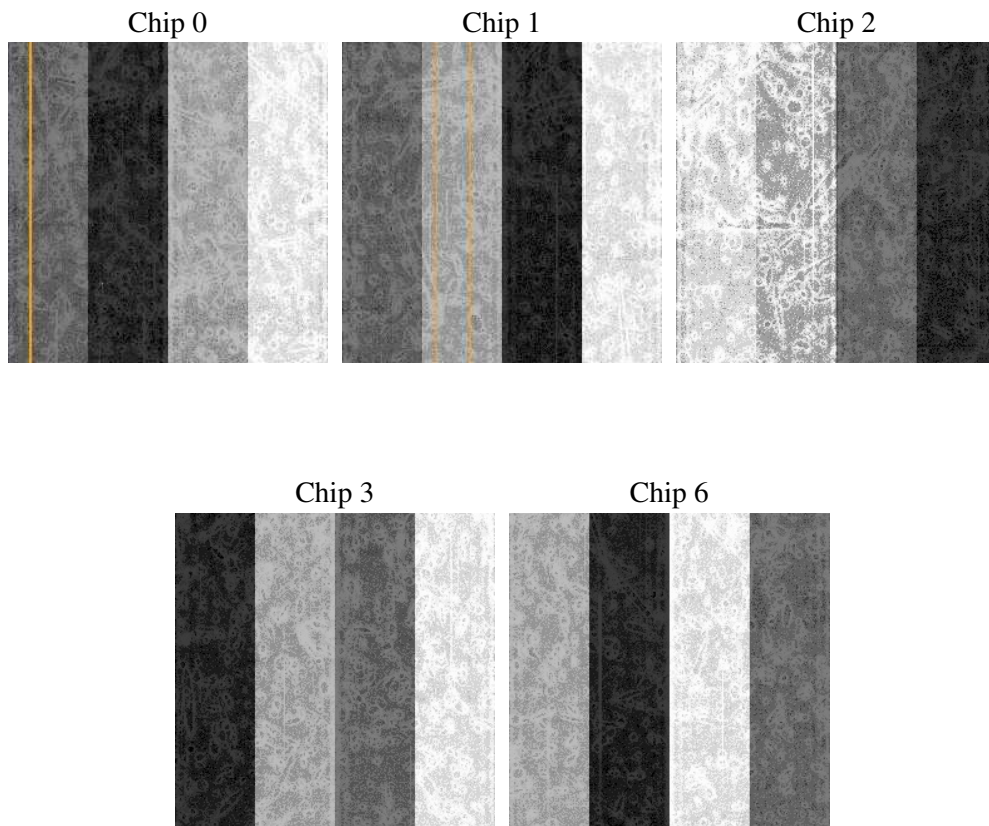
2 OBI

2.1 OBI

2.1.1 Images



2.1.2 Bias



2.1.3 Parameters

obi_num	0
ascdsver	7.6.8
caldsver	3.2.2
date	2006-06-22T13:18:08
revision	2

sched_exp_time	1600.000000
ontime	1724.410405159
ontime0	1724.410405159
ontime1	1724.410405159
ontime2	1724.410405159
ontime3	1724.410405159
ontime6	1724.410405159
l1events	44285

2.1.4 Events

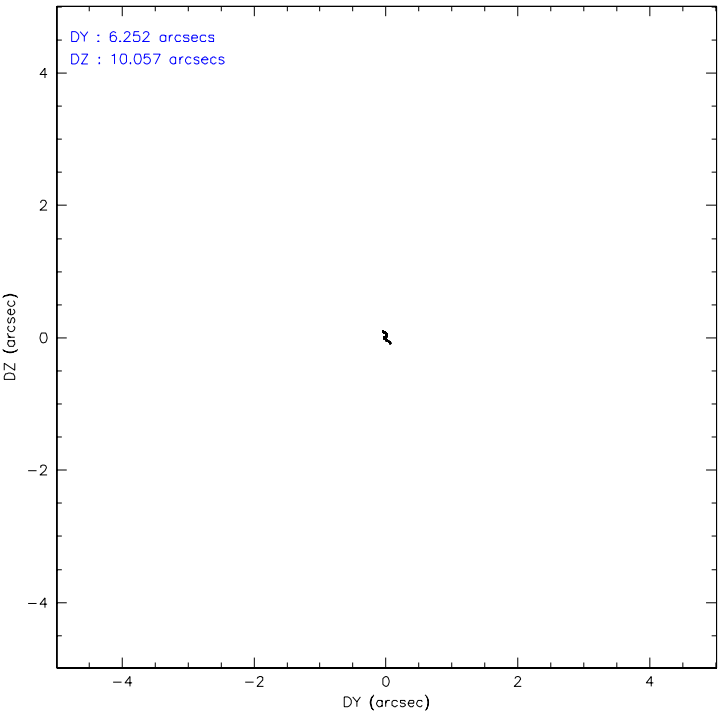
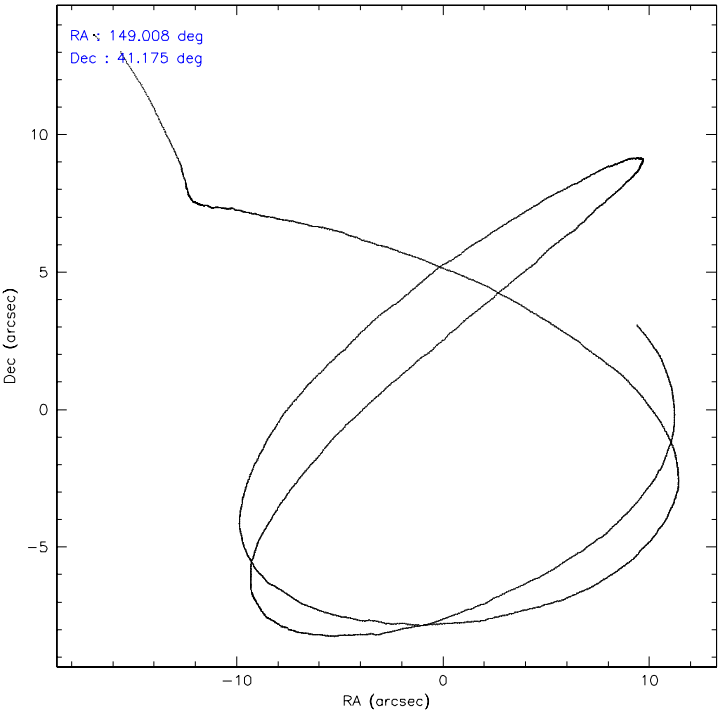
	ccd 0	ccd 1	ccd 2	ccd 3	ccd 6
level 1 events	8727	7991	9712	9011	8844
rejected events	6899	6973	8807	8102	8004
rejected %	79%	87%	90%	89%	90%

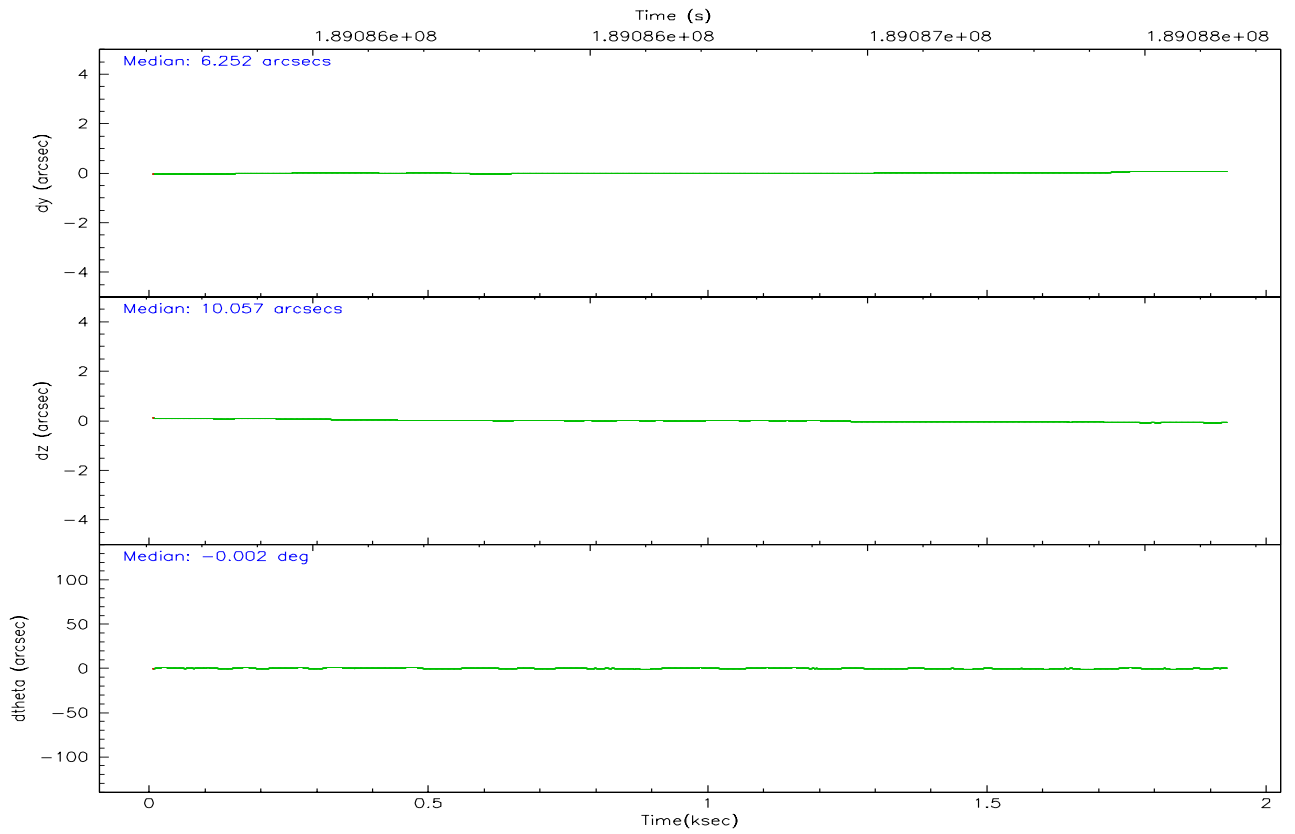
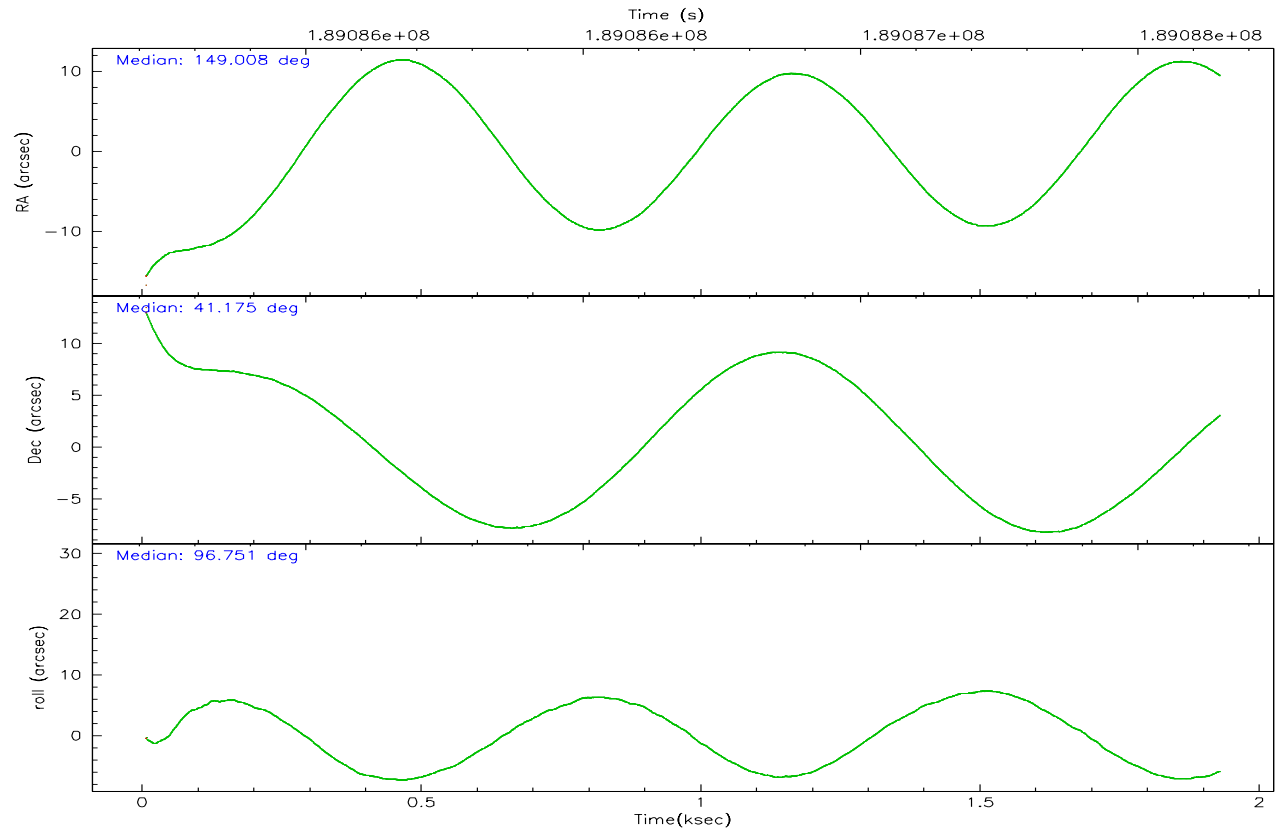
	ccd 0	ccd 1	ccd 2	ccd 3	ccd 6
grade 0 events	1066	367	310	332	288
	12%	4%	3%	3%	3%
grade 1 events	7	2	6	8	0
	0%	0%	0%	0%	0%
grade 2 events	283	229	185	210	176
	3%	2%	1%	2%	1%
grade 3 events	145	113	122	100	95
	1%	1%	1%	1%	1%
grade 4 events	128	115	114	99	98
	1%	1%	1%	1%	1%
grade 5 events	307	340	295	348	330
	3%	4%	3%	3%	3%
grade 6 events	210	196	174	168	183
	2%	2%	1%	1%	2%
grade 7 events	6581	6629	8506	7746	7674
	75%	82%	87%	85%	86%

2.2 Compared Parameters

Parameter	Planned	Actual	Parameter	Planned	Actual
Instrument	ACIS	ACIS	Obspar format version number	6	6
Detector	ACIS-01236	ACIS-01236	Obspar file type	PREDICTED	ACTUAL
Grating	NONE	NONE	Obspar update status	NONE	UPDATED
Data mode	VFAINT	VFAINT	On-chip summing requested	N	N
Observation mode	POINTING	POINTING	Subarray requested	NONE	NONE
Pointing RA	149.030196	149.0081464103774	Alternating exposures requested	N	N
Pointing Dec	41.152809	41.17466518726622	Primary exposure time	0.000000	3.1
Pointing Roll	96.533457	96.75661351451964			
SIM focus pos (mm)	-0.782348	-0.7809083437167272			
SIM defocus (mm)	0	0.001439871863259334			
SIM translation stage pos (mm)	-225.840463	-225.8433433320239			
SIM translation stage offset (mm)	-7.752	-7.749109670905796			
Observation start time	189086042.184000	189085010.4885			
Observation start date	2003-12-29T11:52:58	2003-12-29T11:36:50			
Observation end time	189087642.184000	189088519.06365			
Observation end date	2003-12-29T12:19:38	2003-12-29T12:35:19			
Read mode	TIMED	TIMED			

2.3 Aspect



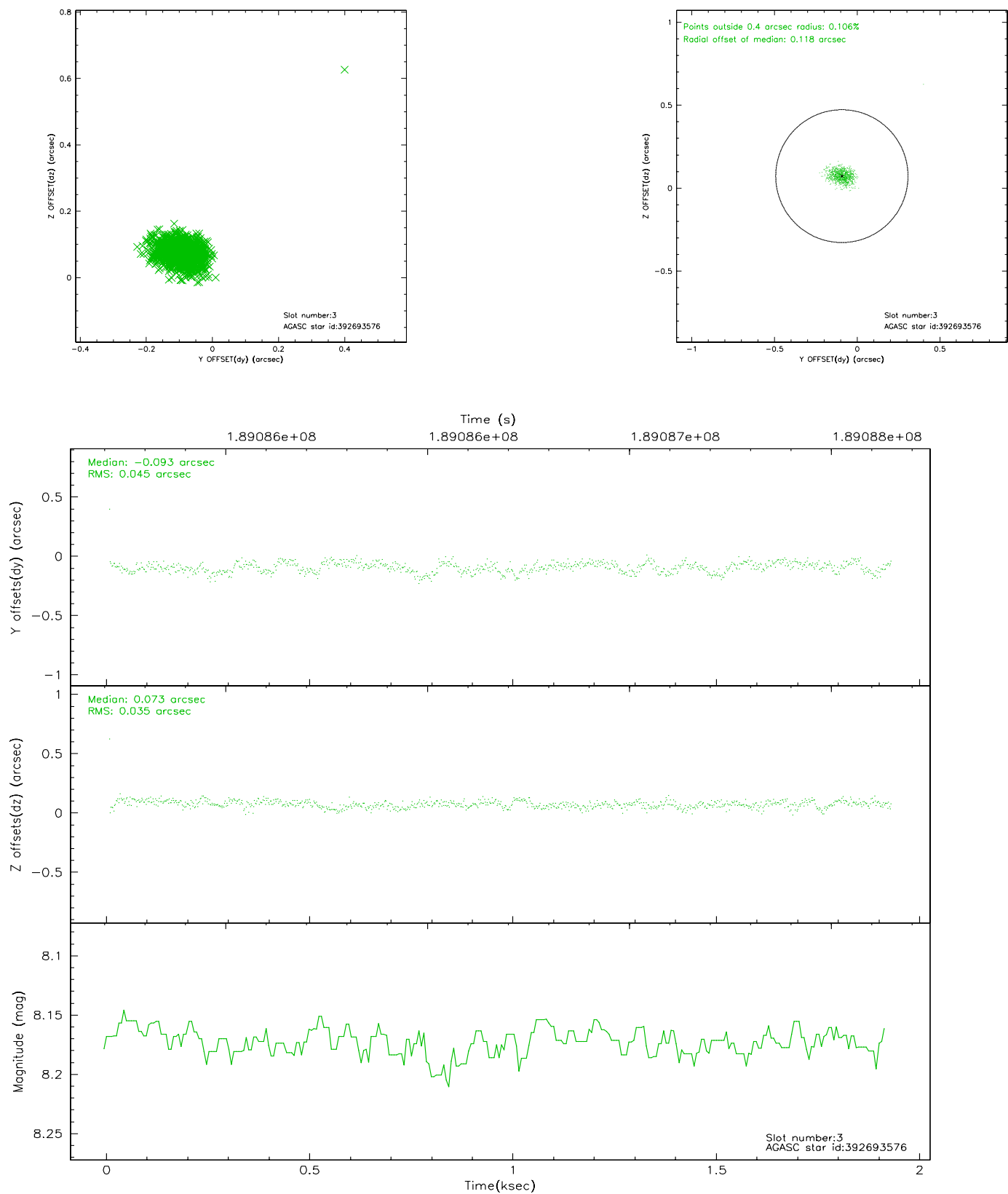


Slot Statistics

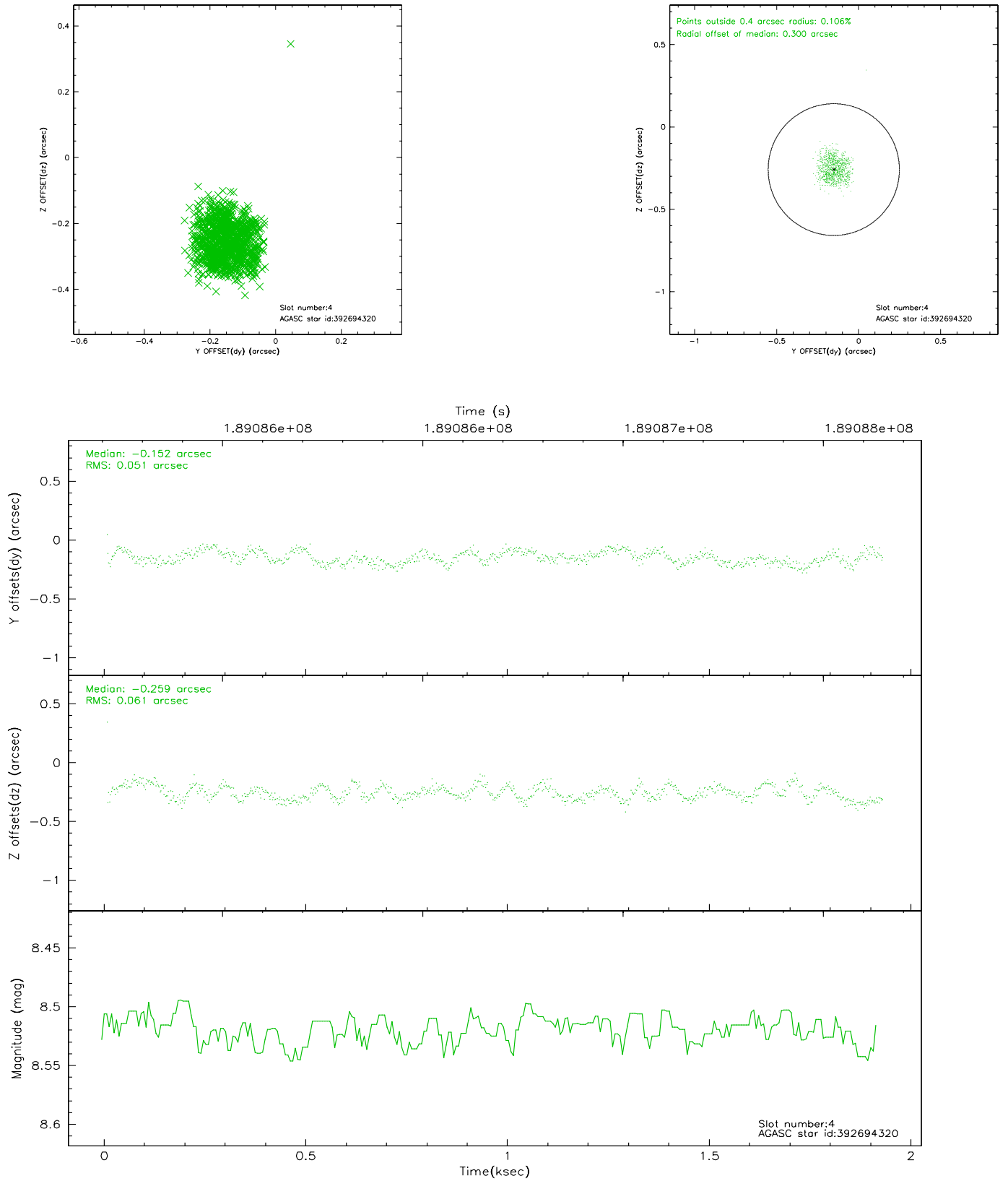
slot	status	id	mag	n_pts	med_dy	med_dz	dr1	dr2	ra	dec	mean_y	mean_z
0	FID	ACIS-I-1	7.23	470	0.063	-0.045	0.006	0.011	0.000000	0.000000	933.36	-992.66
1	FID	ACIS-I-5	7.22	470	-0.174	0.073	0.006	0.011	0.000000	0.000000	-1813.08	902.93
2	FID	ACIS-I-6	7.25	470	0.020	0.043	0.006	0.011	0.000000	0.000000	395.18	1551.25
3	GUIDE	392693576	8.17	939	-0.093	0.073	0.055	0.088	149.531855	41.595239	1432.80	-1523.55
4	GUIDE	392694320	8.52	939	-0.152	-0.259	0.085	0.123	148.201769	41.462521	1373.98	2090.39
5	GUIDE	392695480	8.87	939	0.005	0.149	0.089	0.140	149.916110	41.131503	-335.55	-2377.07
6	GUIDE	392697792	9.50	938	0.163	0.037	0.077	0.128	149.223797	40.535935	-2266.03	-276.44
7	GUIDE	392695808	8.18	938	0.079	-0.001	0.061	0.094	149.841460	40.572011	-2321.55	-1968.10

2.4 Star Slots

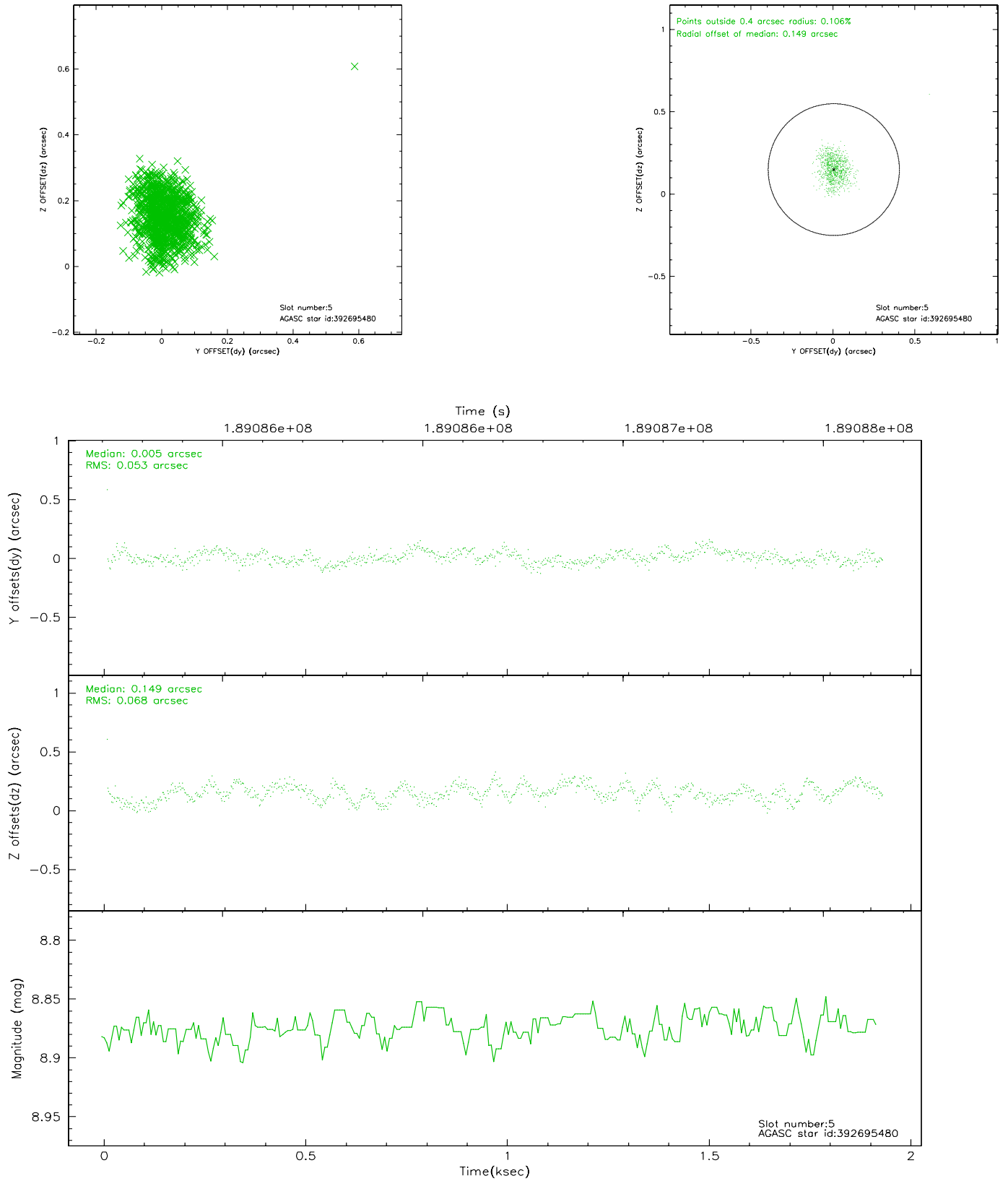
2.4.1 Slot 3



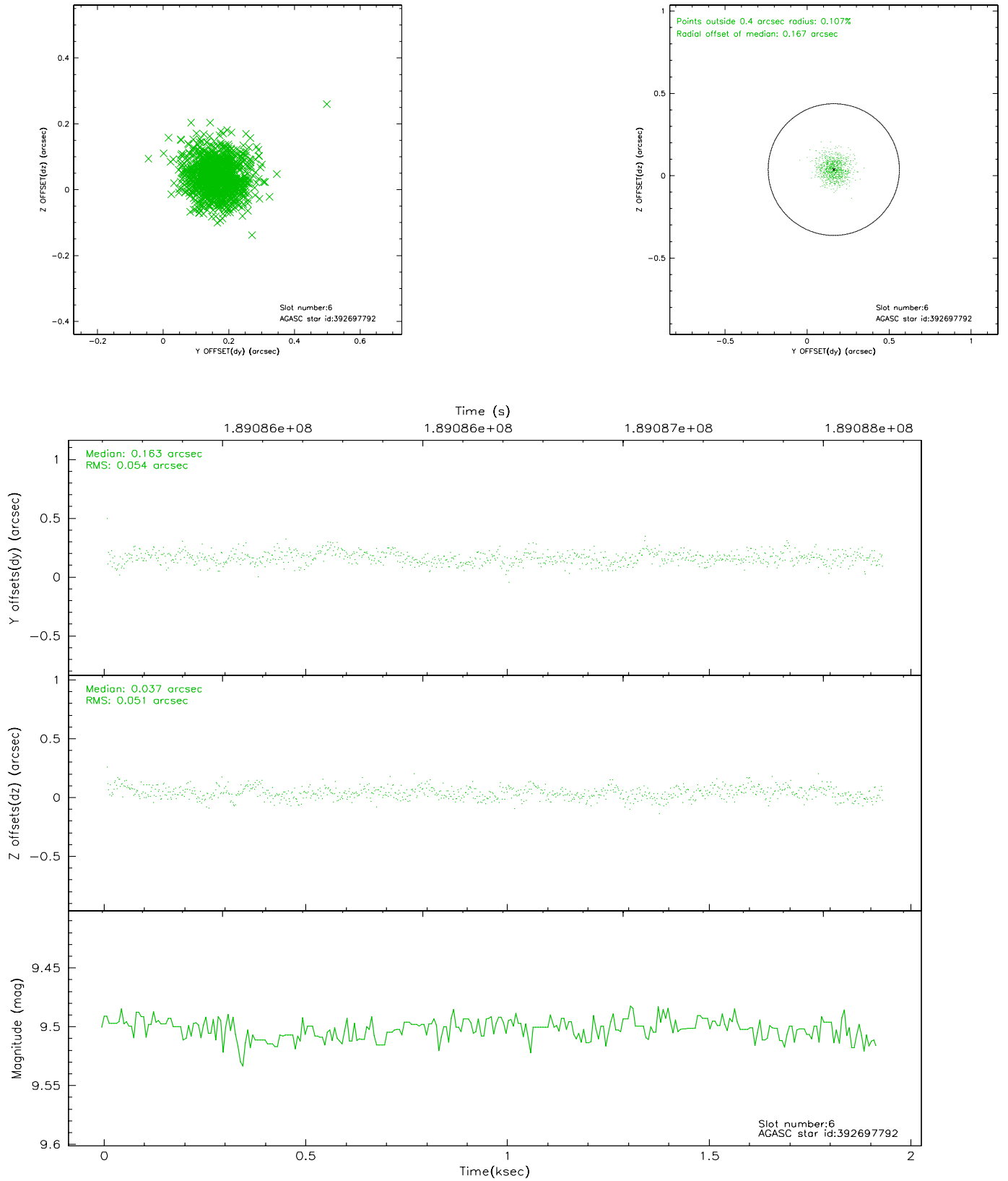
2.4.2 Slot 4



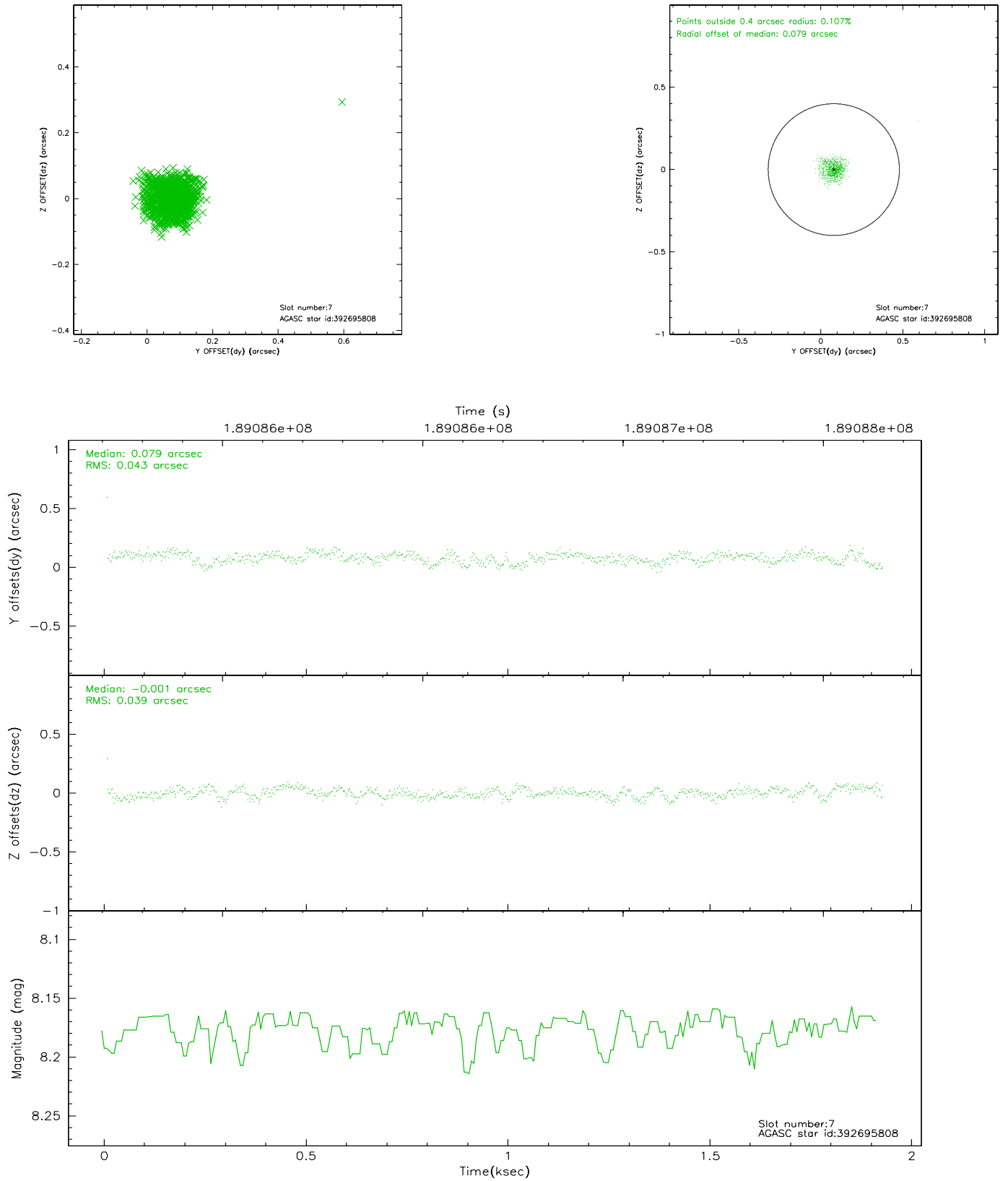
2.4.3 Slot 5



2.4.4 Slot 6

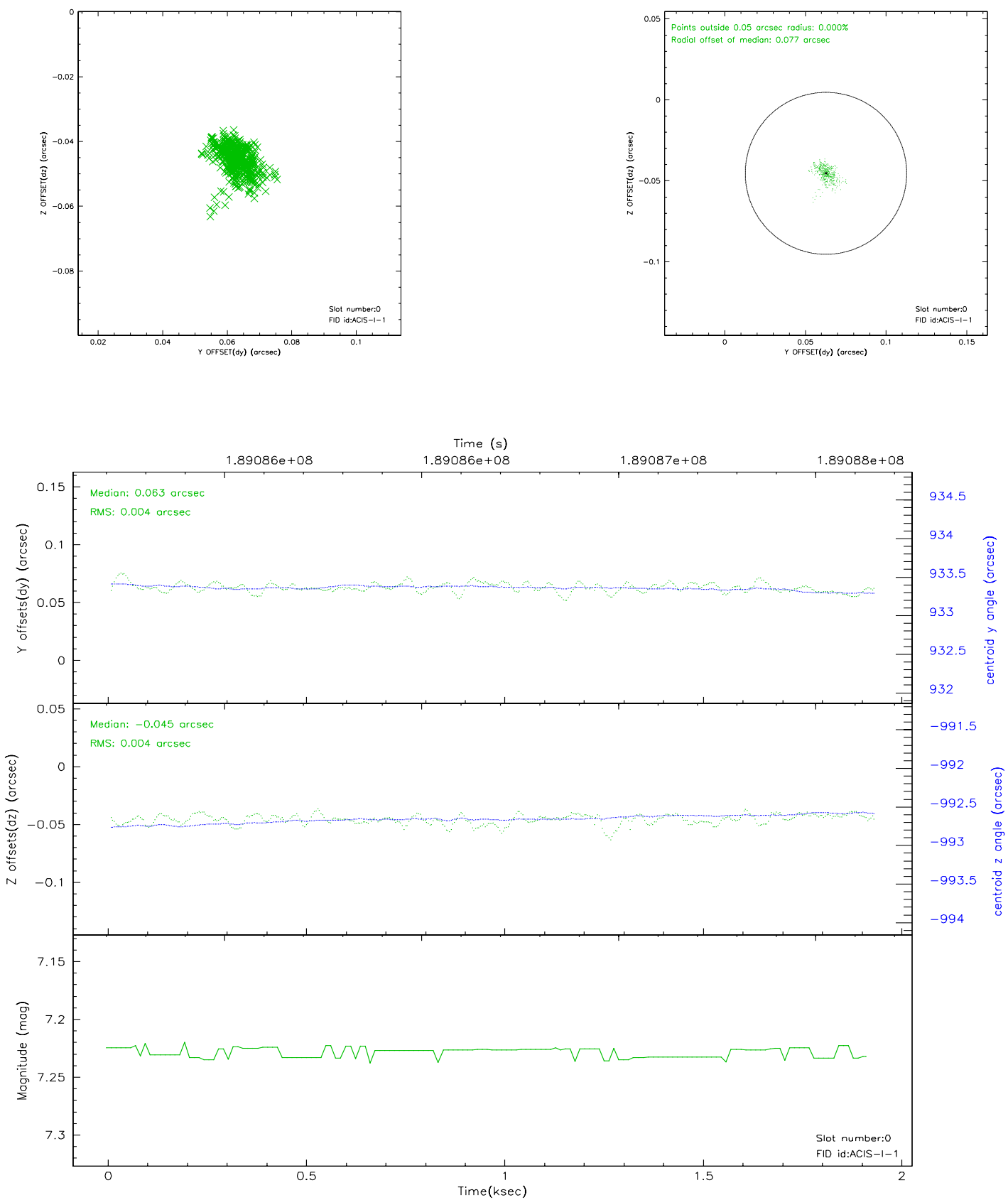


2.4.5 Slot 7

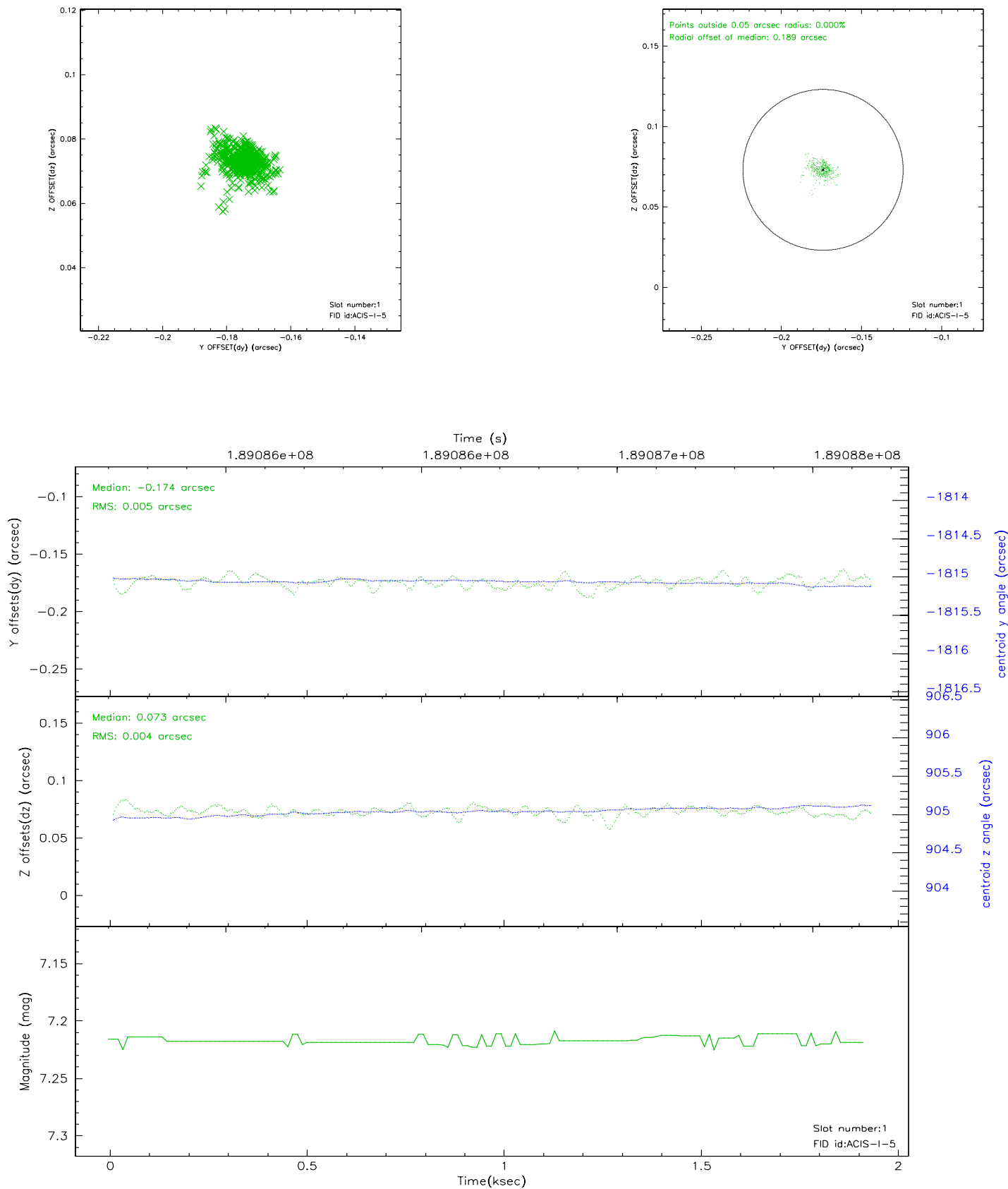


2.5 FID Slots

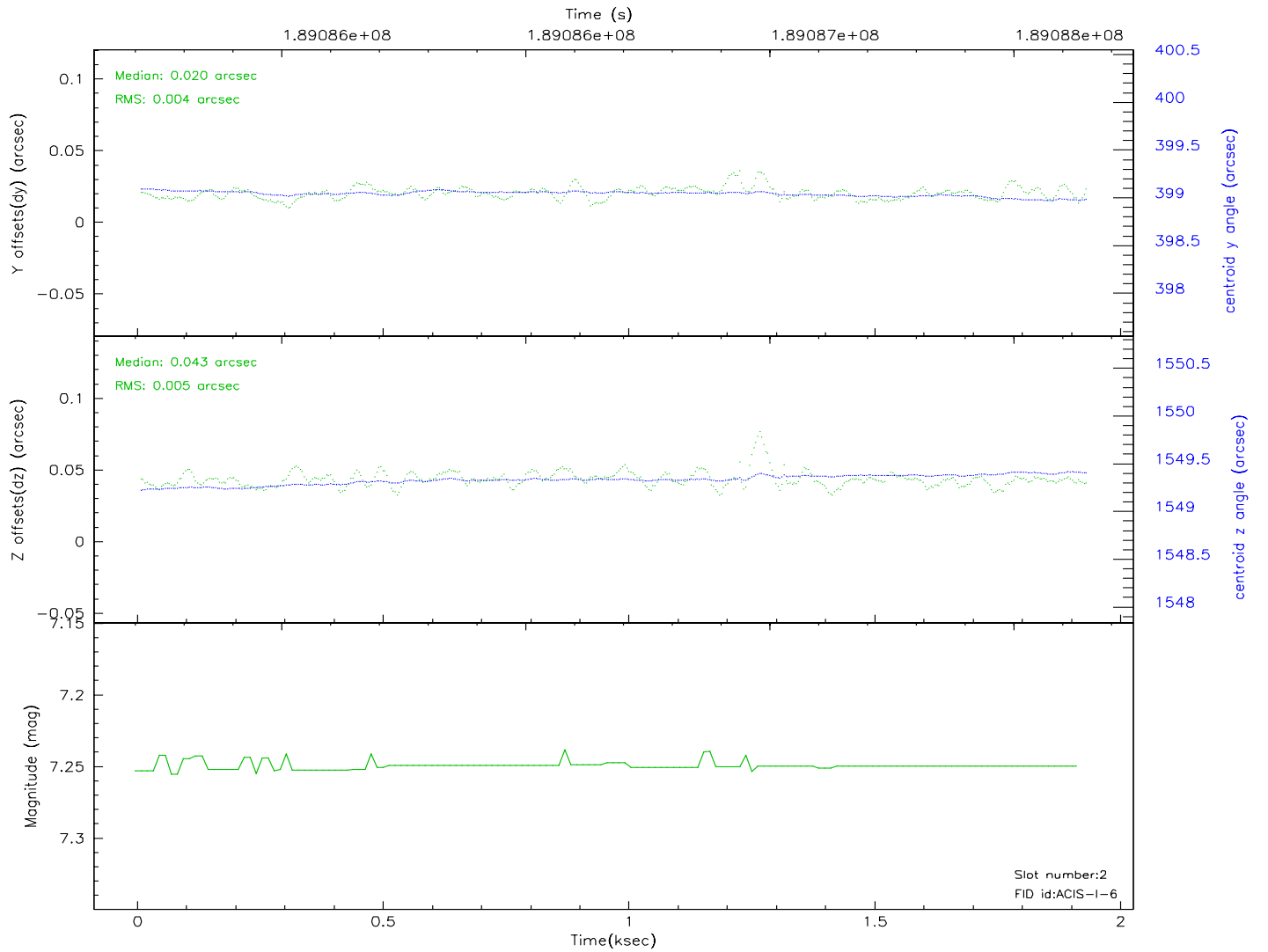
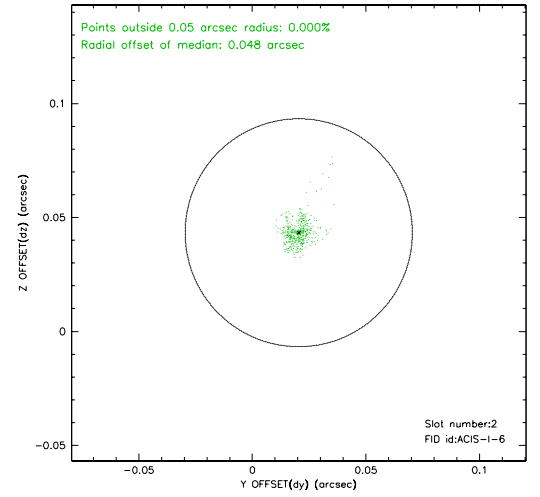
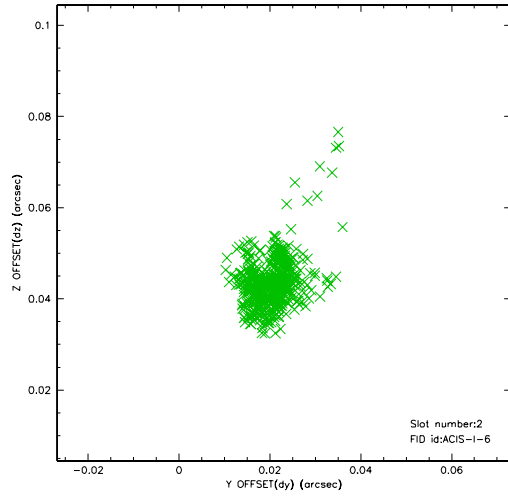
2.5.1 Slot 0



2.5.2 Slot 1

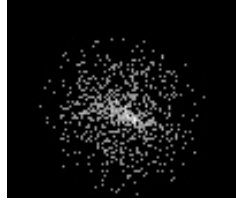


2.5.3 Slot 2



3 Point Sources

10.67 arcmin



A Summary

A.1 Status

V&V Scientist	Jen Lauer
V&V Date (YYYY-MM-DD)	2006.06.22
V&V Edition	1
V&V Disposition and Status	OK
V&V Charge Time	1.72

A.2 Comments

On day 356 at about 00:30, the OBA heater stuck in the 'on' position. This situation affected obsid 4901 and all subsequent observations to this point. The result of this anomaly could be a displacement of the target on the chip in the z direction. The displacement will be small because everything is still within spec, but the target may be spatially displaced, have a different point spread function, or trail across the chip.