

V&V Reference Report

L2 ASCDS Version : 7.6.7.2

Observation 4840 - L2 Version 001
Chandra X-Ray Center

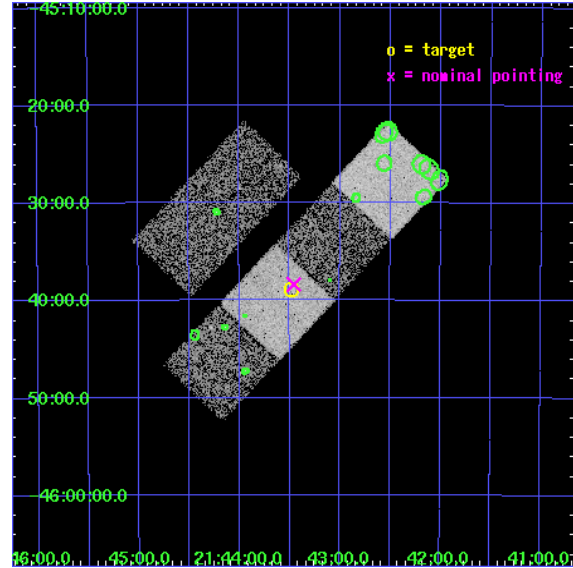
L2 Processing Date : May 27 2006

Contents

1	Front	2
2	OBI	3
2.1	OBI	3
2.1.1	Images	3
2.1.2	Bias	3
2.1.3	Parameters	4
2.1.4	Events	4
2.2	Compared Parameters	5
2.3	Aspect	6
2.4	Star Slots	9
2.4.1	Slot 3	9
2.4.2	Slot 4	10
2.4.3	Slot 5	11
2.4.4	Slot 6	12
2.4.5	Slot 7	13
2.5	FID Slots	14
2.5.1	Slot 0	14
2.5.2	Slot 1	15
2.5.3	Slot 2	16
3	Point Sources	17
A	Summary	18
A.1	Status	18
A.2	Comments	18

1 Front

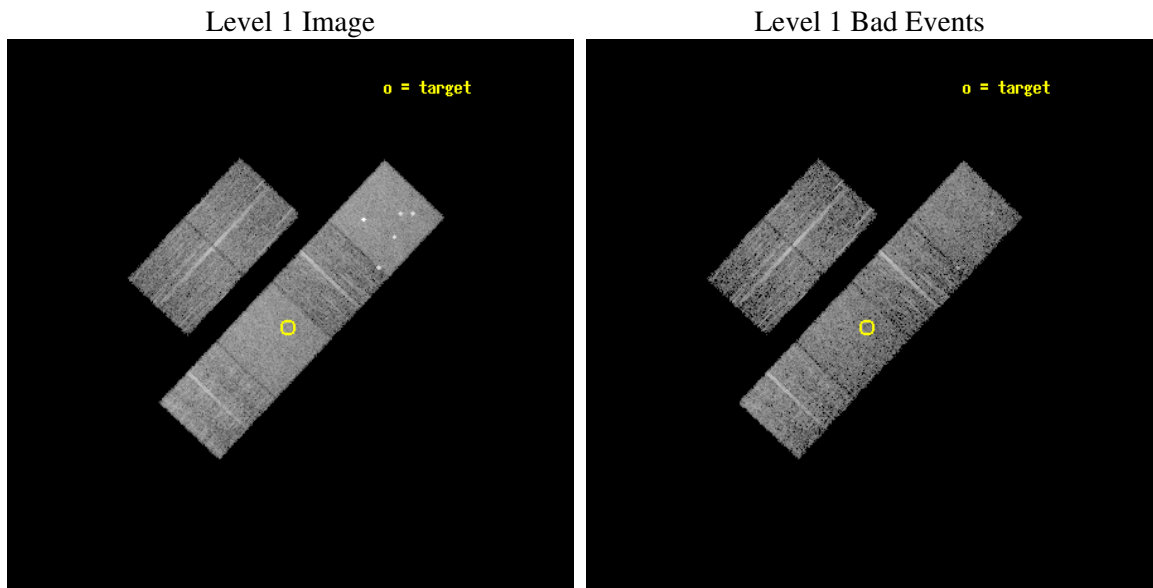
seq_num	700922
obs_id	4840
title	Constraining the Hard-X-ray Through Submm SEDs of a Complete Sample of Broad Absorption Line Quasars
observer	Dr. Sarah Gallagher
object	LBQS 2140-4552
dtcycle	0
cycle	P
ra_targ	325.87171
dec_targ	-45.647721
ra_nom	325.86412357847
dec_nom	-45.639649788222
roll_nom	133.26337291961
revision	2
ontime	5756.7999785542
livetime	5683.903910897
ontime2	5756.7999785542
ontime3	5756.7999785542
ontime5	5756.7999785542
ontime6	5756.7999785542
ontime7	5756.7999785542
ontime8	5753.5590082705
l2events	60818



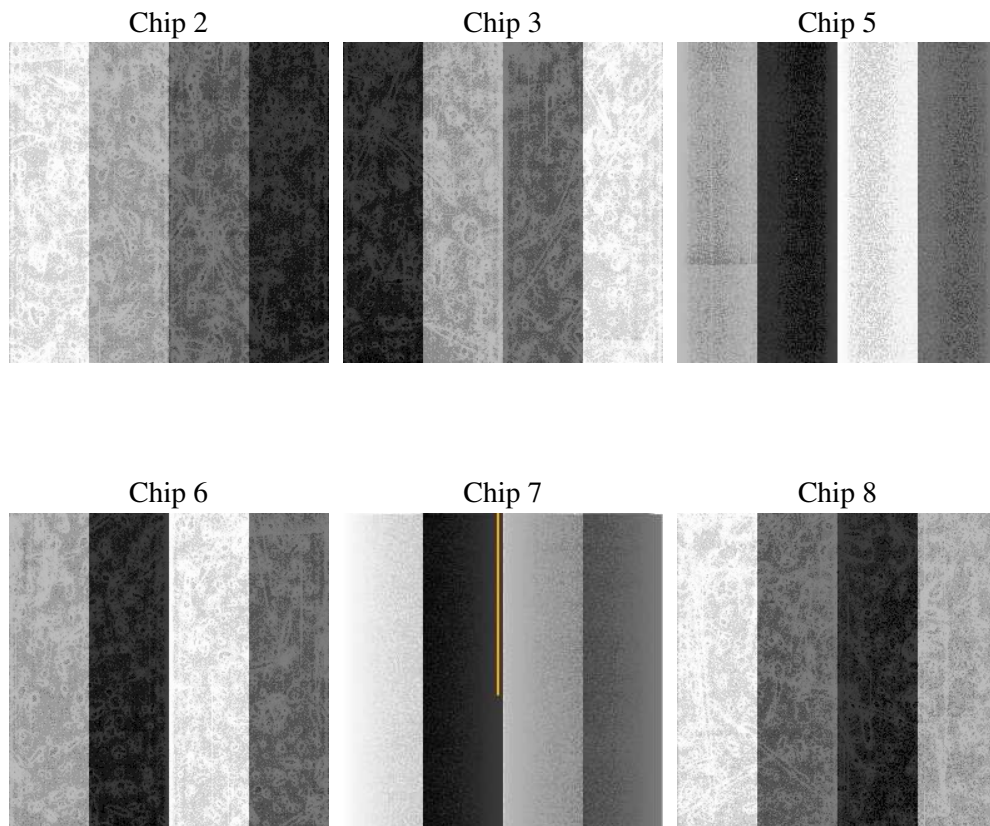
2 OBI

2.1 OBI

2.1.1 Images



2.1.2 Bias



2.1.3 Parameters

obi_num	0
ascdsver	7.6.7.2
caldsver	3.2.2
date	2006-05-27T02:52:59
revision	2

sched_exp_time	6000.000000
ontime	5759.2588927746
ontime2	5759.2588927746
ontime3	5759.2588927746
ontime5	5759.2588927746
ontime6	5759.2588927746
ontime7	5759.2588927746
ontime8	5756.0178228915
l1events	284013

2.1.4 Events

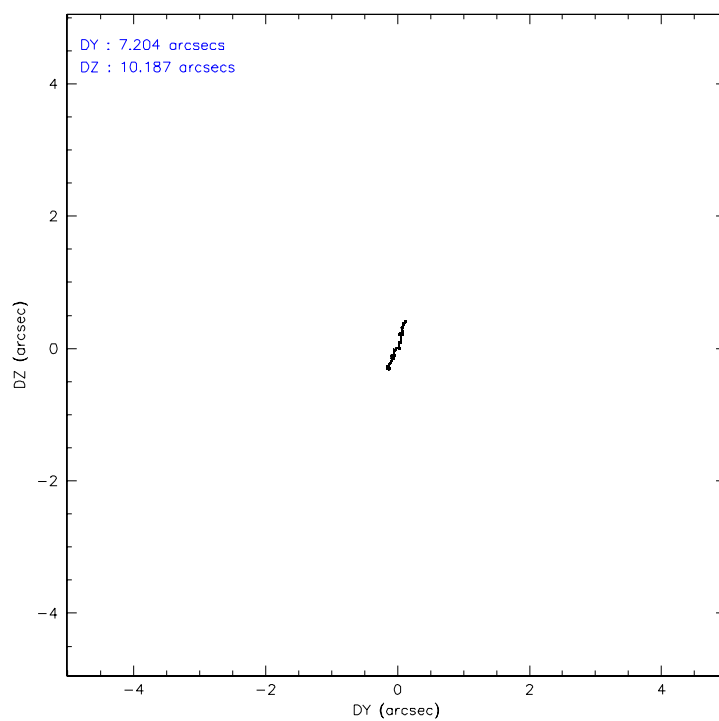
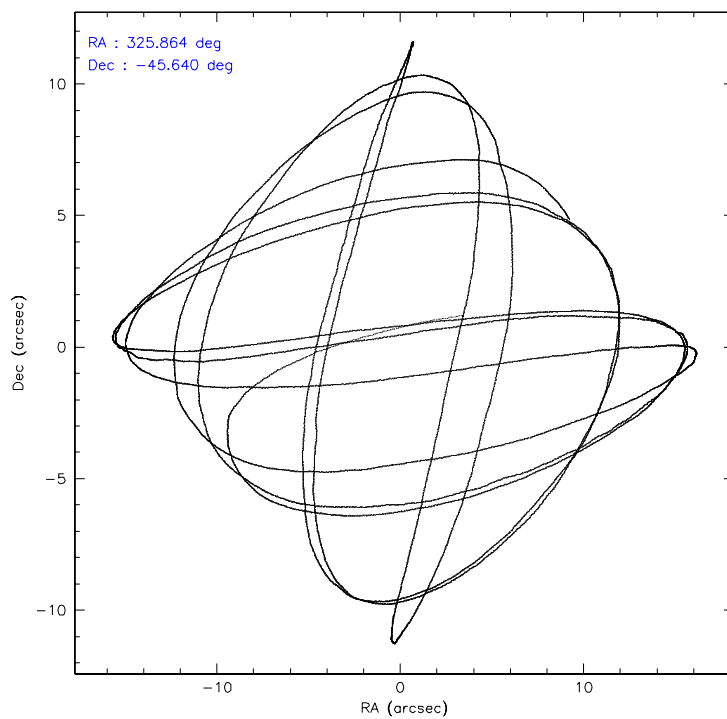
	ccd 2	ccd 3	ccd 5	ccd 6	ccd 7	ccd 8
level 1 events	38616	37708	61725	39847	54094	52023
rejected events	33904	33174	33237	35177	33538	41535
rejected %	87%	87%	53%	88%	61%	79%

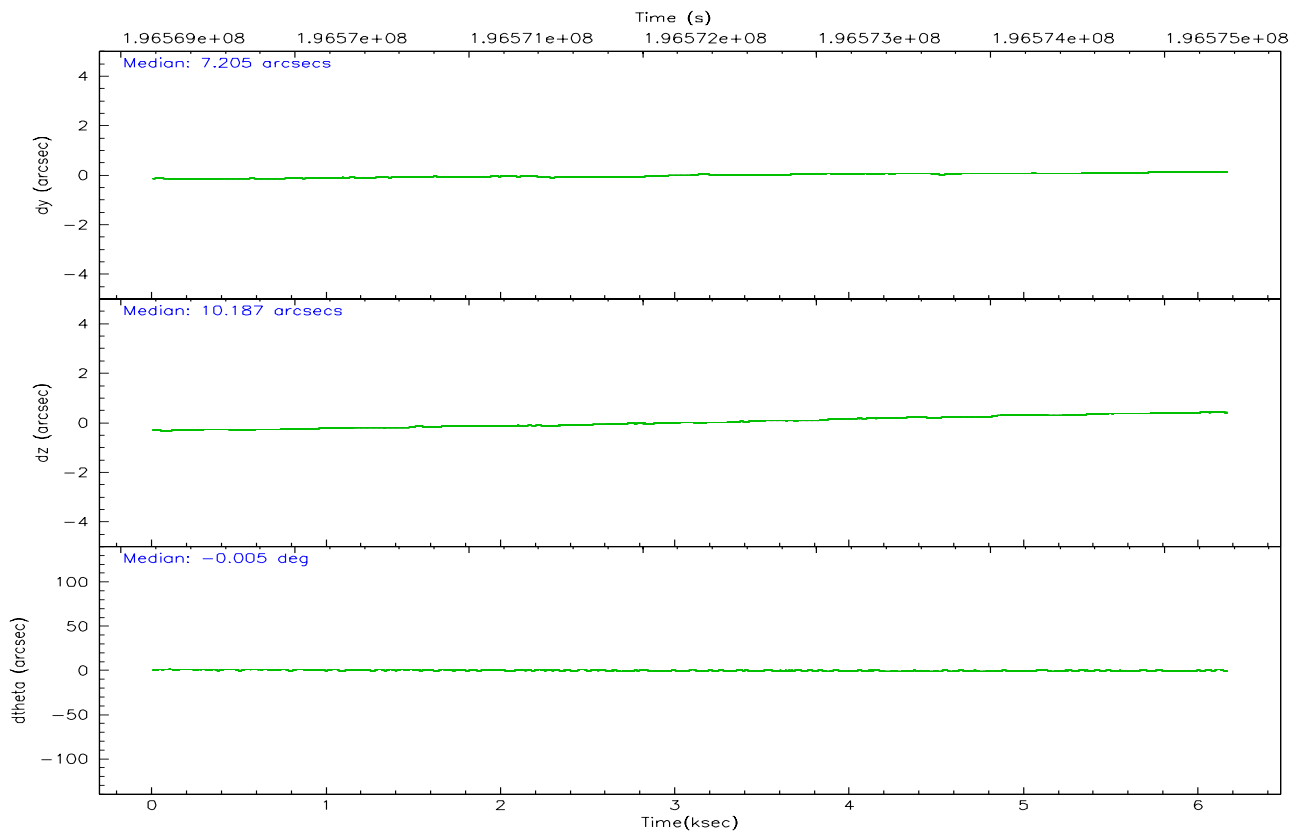
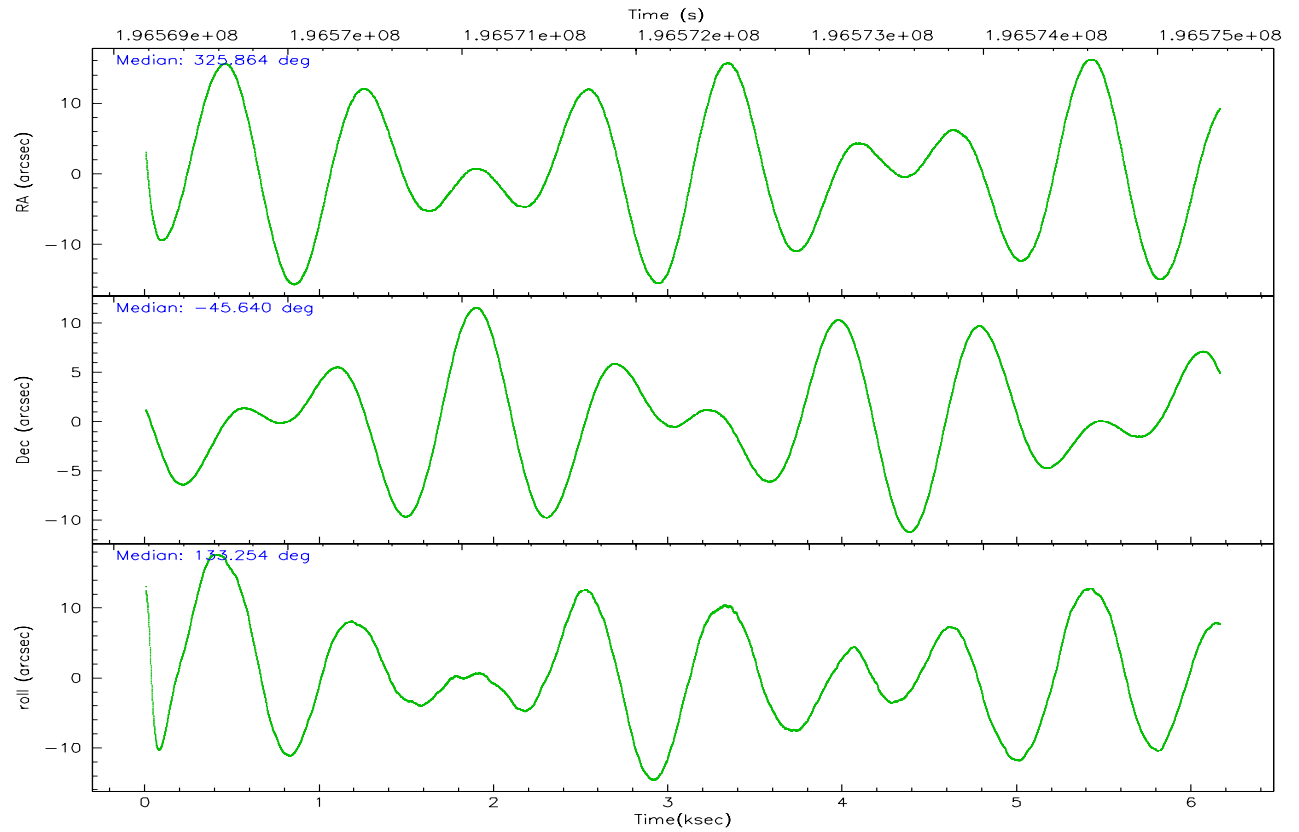
	ccd 2	ccd 3	ccd 5	ccd 6	ccd 7	ccd 8
grade 0 events	2064	2061	4532	1849	1205	3220
	5%	5%	7%	4%	2%	6%
grade 1 events	22	21	192	15	35	40
	0%	0%	0%	0%	0%	0%
grade 2 events	942	853	7841	944	5115	2264
	2%	2%	12%	2%	9%	4%
grade 3 events	492	418	618	506	1026	1070
	1%	1%	1%	1%	1%	2%
grade 4 events	435	439	585	441	983	1114
	1%	1%	0%	1%	1%	2%
grade 5 events	1620	1723	2865	1795	3583	2327
	4%	4%	4%	4%	6%	4%
grade 6 events	781	766	14928	933	12238	2822
	2%	2%	24%	2%	22%	5%
grade 7 events	32260	31427	30164	33364	29909	39166
	83%	83%	48%	83%	55%	75%

2.2 Compared Parameters

Parameter	Planned	Actual	Parameter	Planned	Actual
Instrument	ACIS	ACIS	Obspar format version number	6	6
Detector	ACIS-235678	ACIS-235678	Obspar file type	PREDICTED	ACTUAL
Grating	NONE	NONE	Obspar update status	NONE	UPDATED
Data mode	FAINT	FAINT	On-chip summing requested	N	N
Observation mode	POINTING	POINTING	Subarray requested	NONE	NONE
Pointing RA	325.901588	325.8641235784724	Alternating exposures requested	N	N
Pointing Dec	-45.647098	-45.63964978822188	Primary exposure time	0.000000	3.2
Pointing Roll	133.133498	133.2633729196069			
SIM focus pos (mm)	-0.684267	-0.6828225247311905			
SIM defocus (mm)	0	0.001444936568705701			
SIM translation stage pos (mm)	-190.132523	-190.1425803651734			
SIM translation stage offset (mm)	0	0.01005778216563158			
Observation start time	196569353.184000	196568450.74068			
Observation start date	2004-03-25T02:34:49	2004-03-25T02:20:50			
Observation end time	196575353.184000	196575945.54101			
Observation end date	2004-03-25T04:14:49	2004-03-25T04:25:45			
Read mode	TIMED	TIMED			

2.3 Aspect



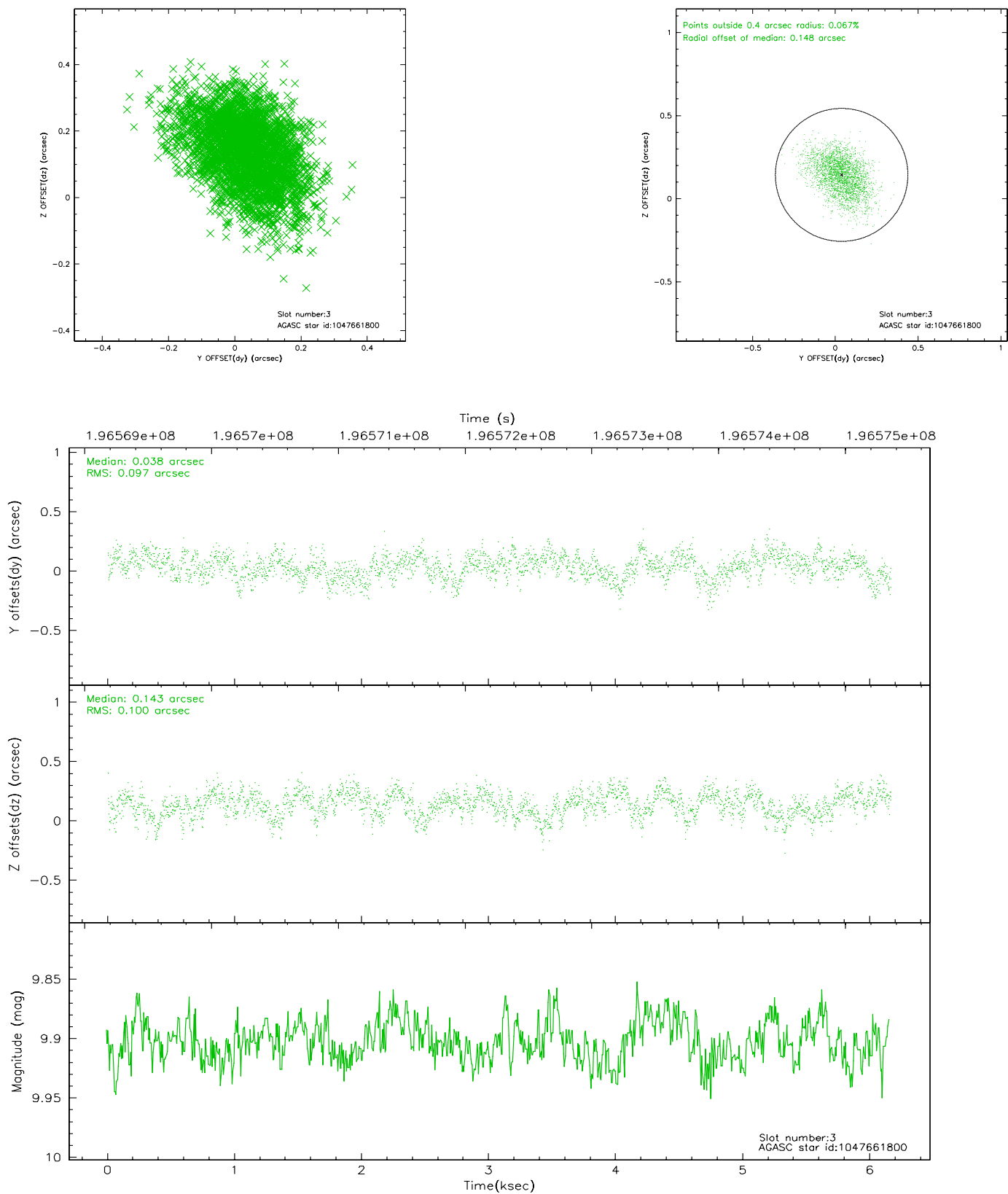


Slot Statistics

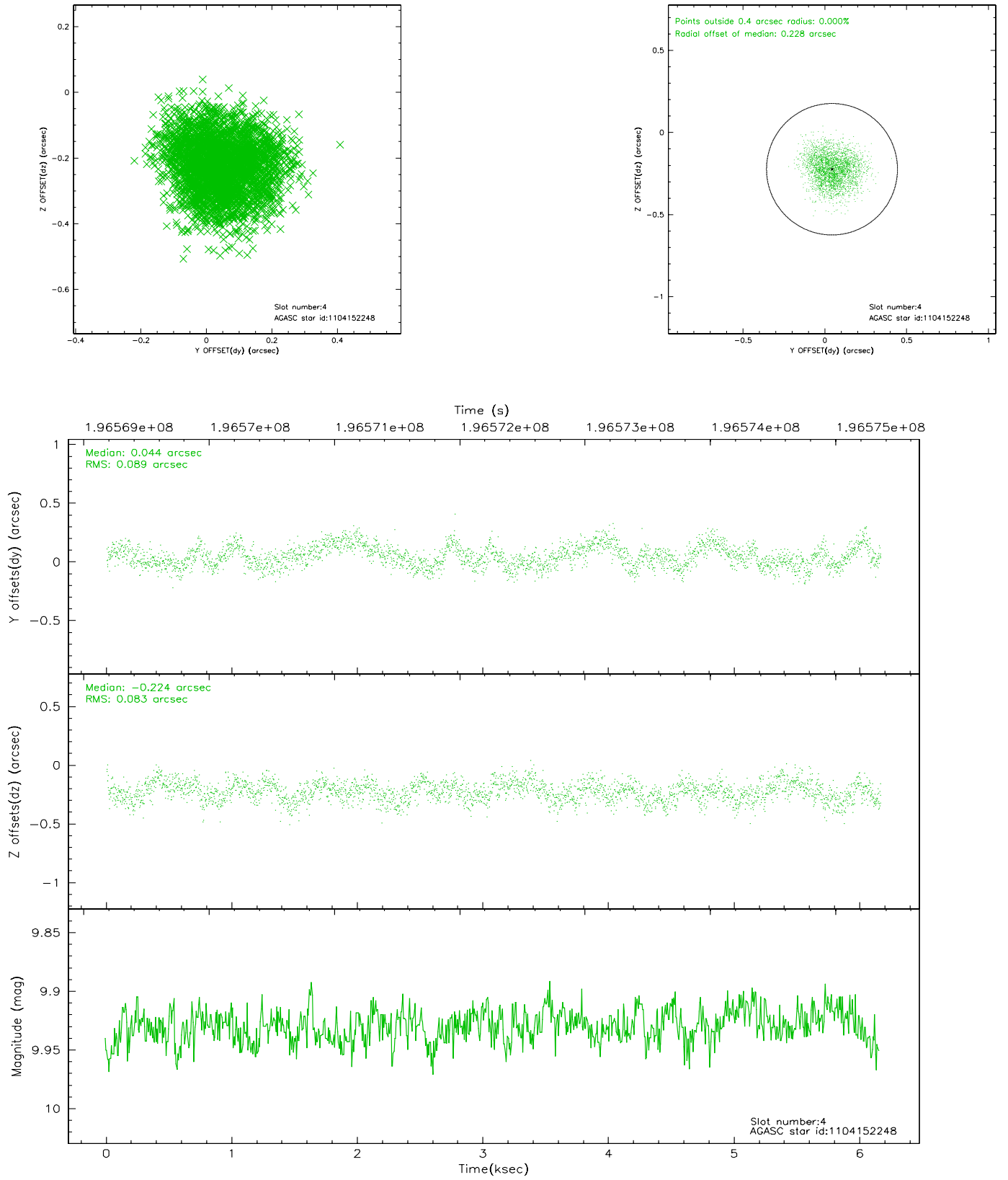
slot	status	id	mag	n_pts	med_dy	med_dz	dr1	dr2	ra	dec	mean_y	mean_z
0	FID	ACIS-S-2	7.10	1502	-0.031	0.012	0.007	0.013	0.000000	0.000000	-759.95	-1731.42
1	FID	ACIS-S-4	7.20	1503	0.027	0.012	0.005	0.009	0.000000	0.000000	2152.92	176.12
2	FID	ACIS-S-5	7.23	1504	-0.027	-0.015	0.007	0.012	0.000000	0.000000	-1811.59	170.78
3	GUIDE	1047661800	9.90	3003	0.038	0.143	0.147	0.243	325.702038	-44.957062	2160.41	-1326.35
4	GUIDE	1104152248	9.93	3006	0.044	-0.224	0.133	0.204	326.185091	-45.904719	-1162.42	116.04
5	GUIDE	1104157520	10.14	3001	-0.036	-0.201	0.170	0.286	325.060770	-45.877728	825.97	2113.28
6	GUIDE	1105865456	8.77	3004	-0.188	0.204	0.095	0.148	326.540103	-45.154856	180.82	-2388.98
7	GUIDE	1105865512	9.25	3005	0.142	0.083	0.094	0.150	326.700026	-46.002142	-2304.53	-577.02

2.4 Star Slots

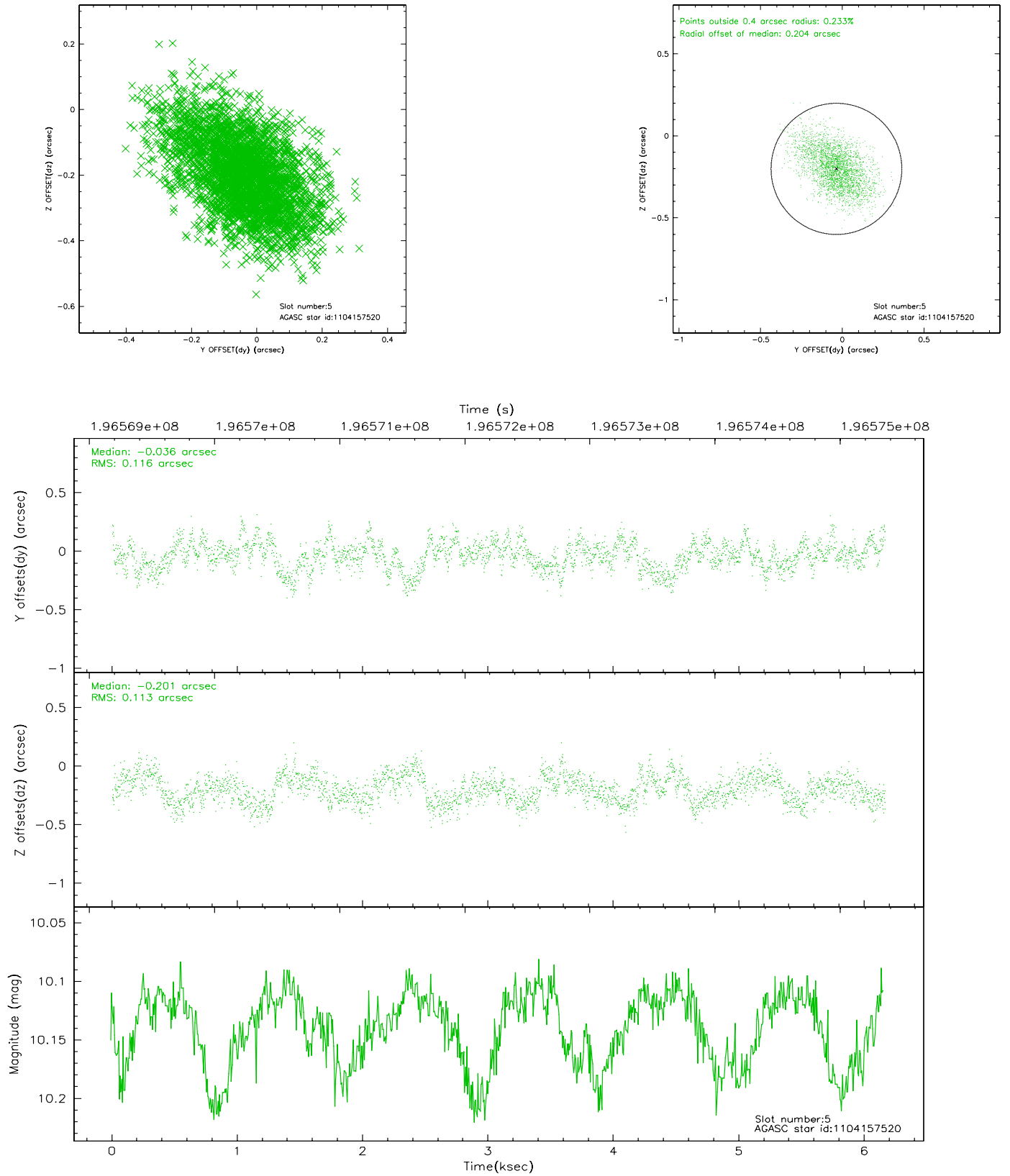
2.4.1 Slot 3



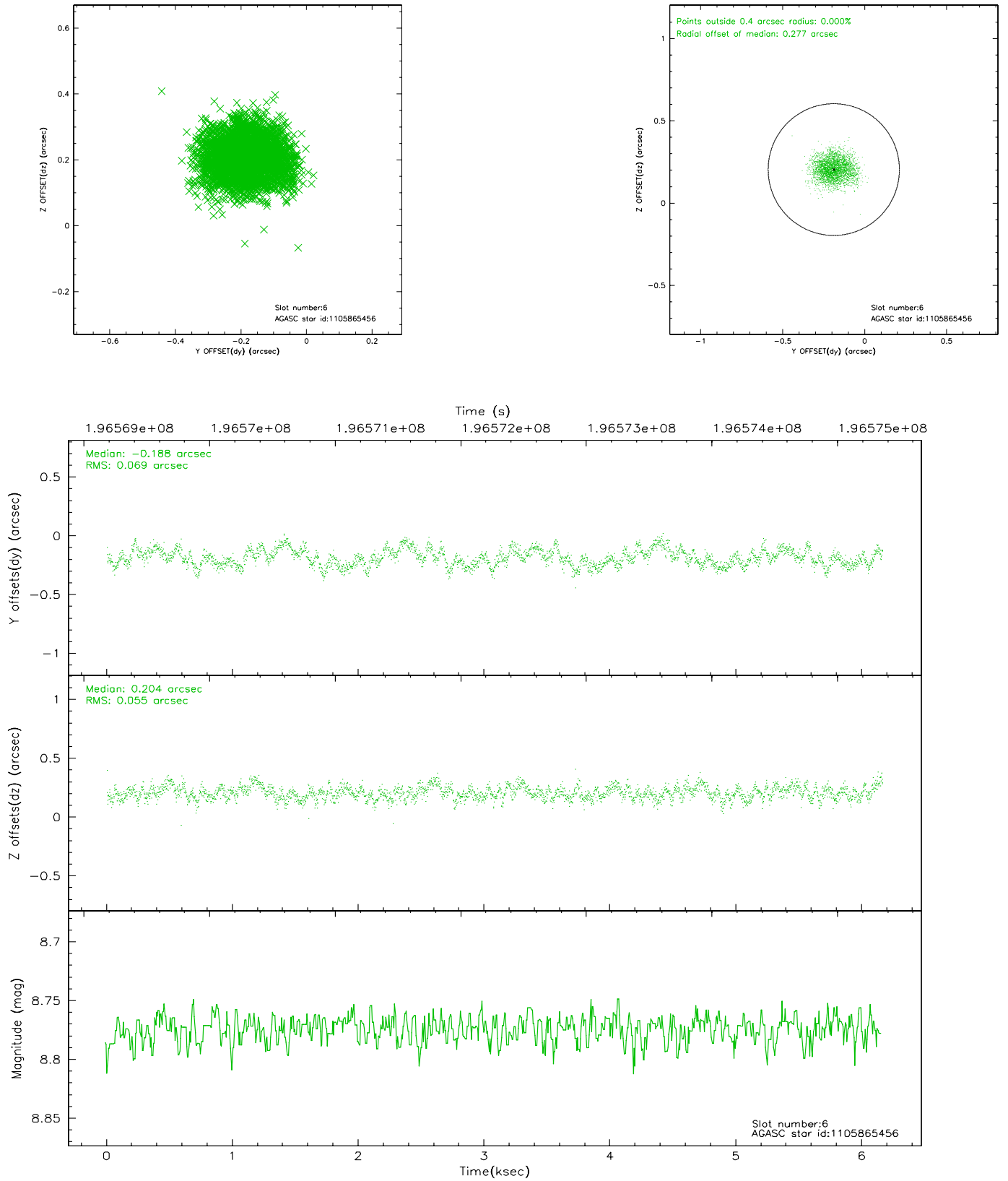
2.4.2 Slot 4



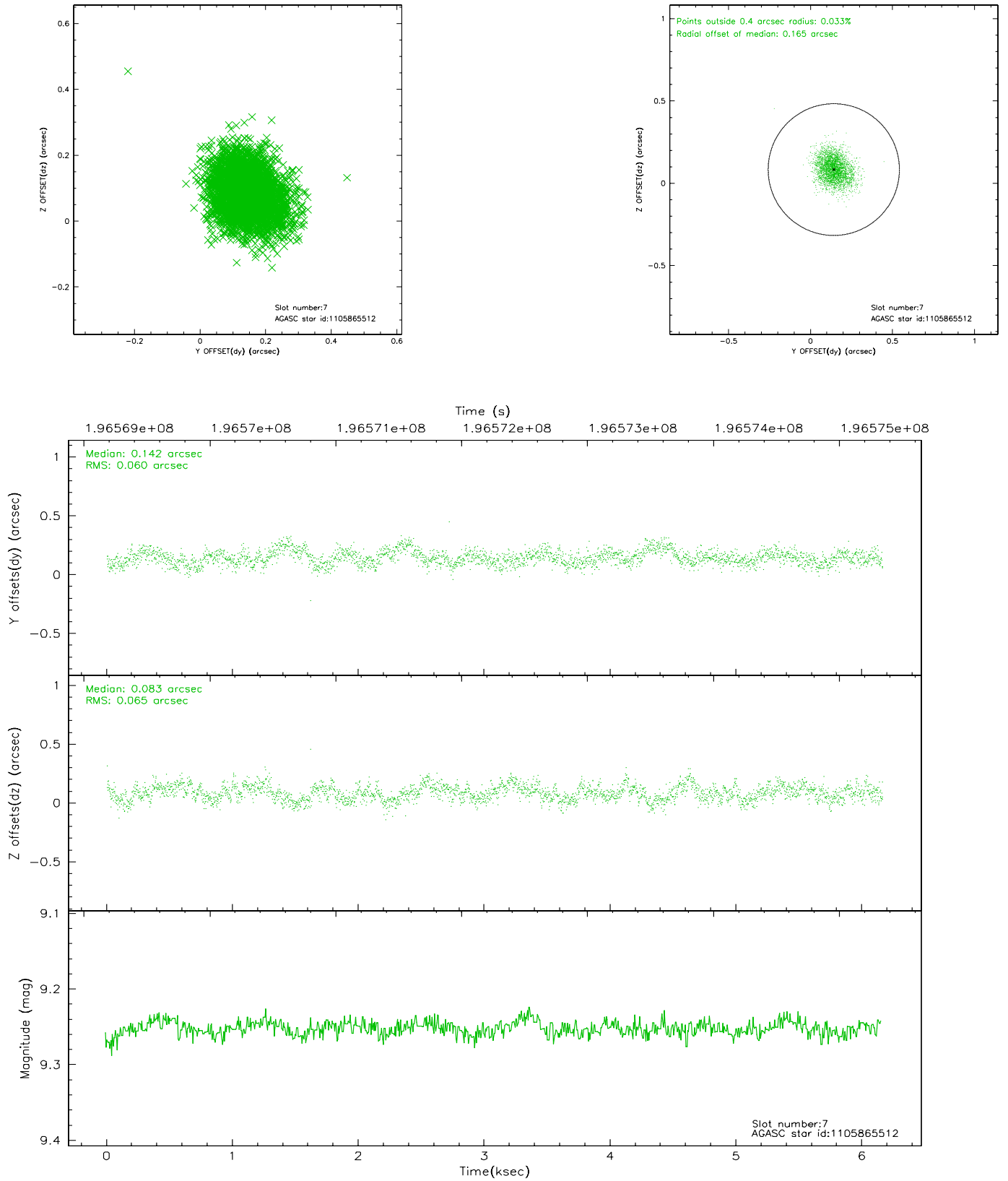
2.4.3 Slot 5



2.4.4 Slot 6

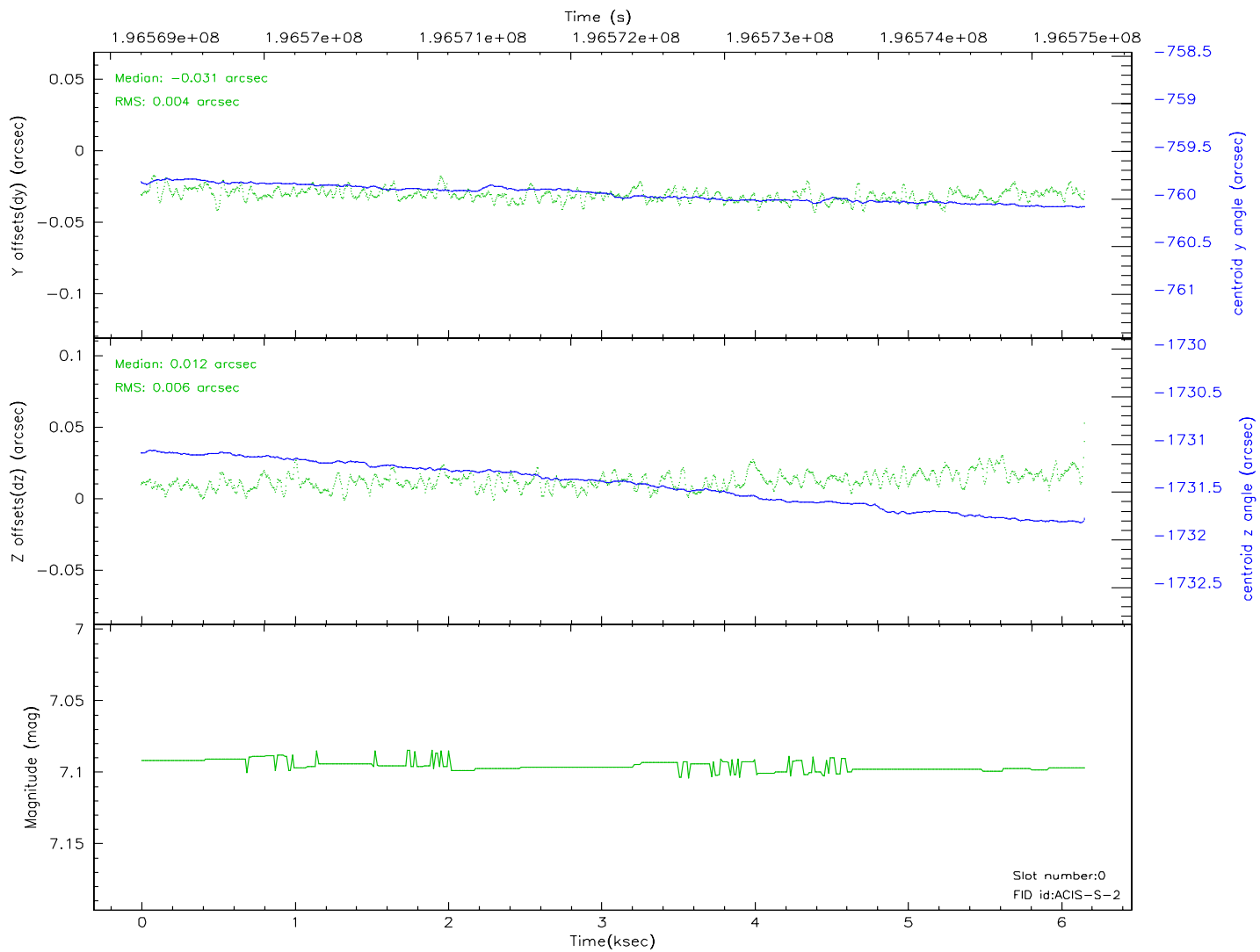
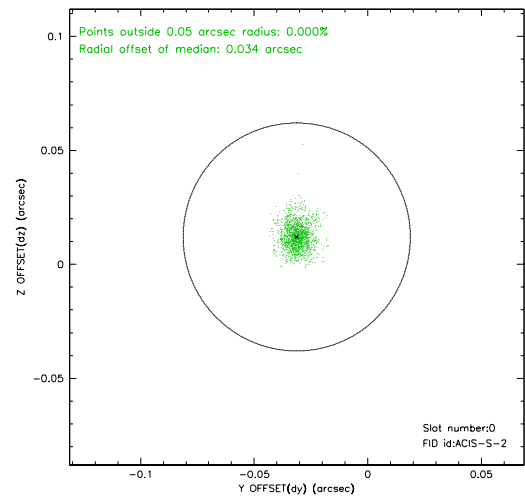
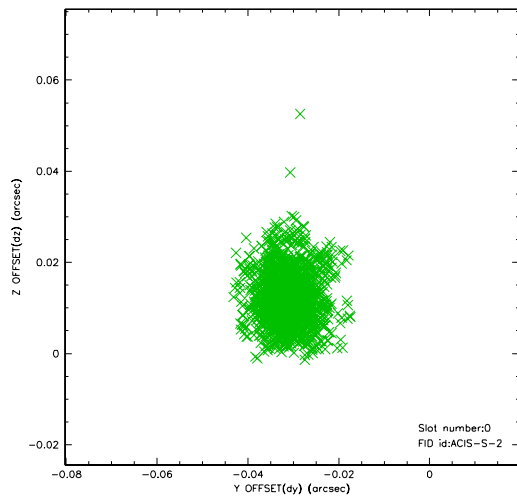


2.4.5 Slot 7

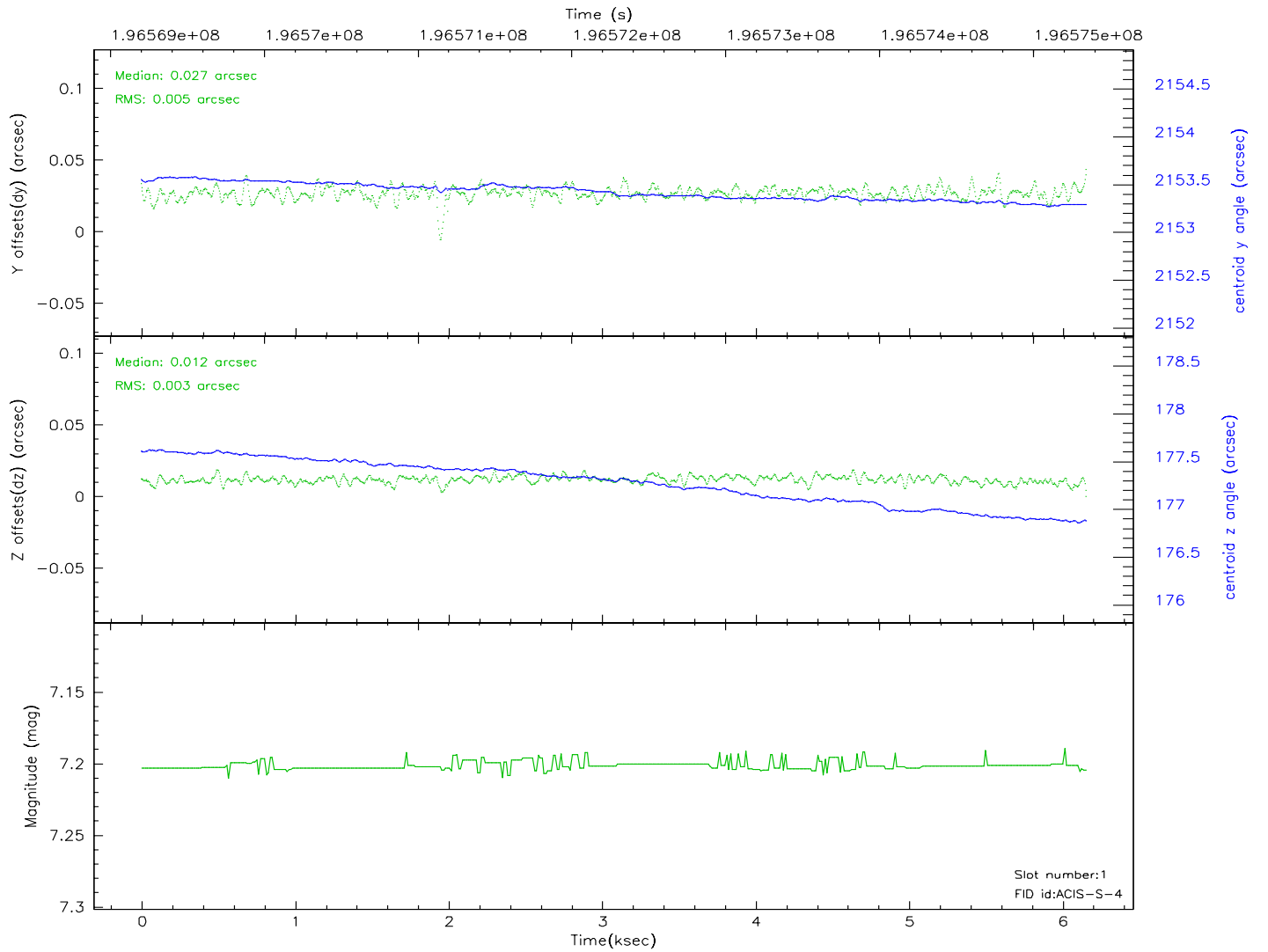
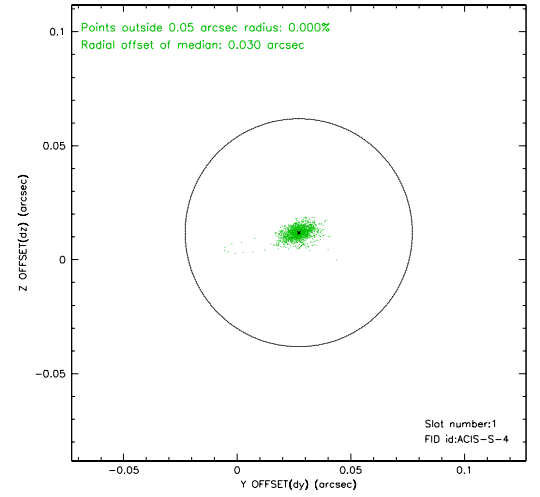
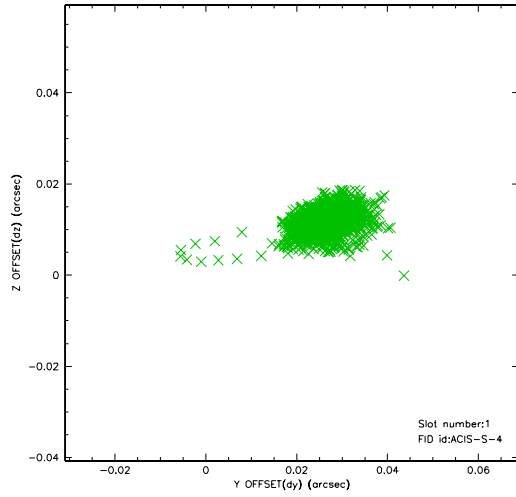


2.5 FID Slots

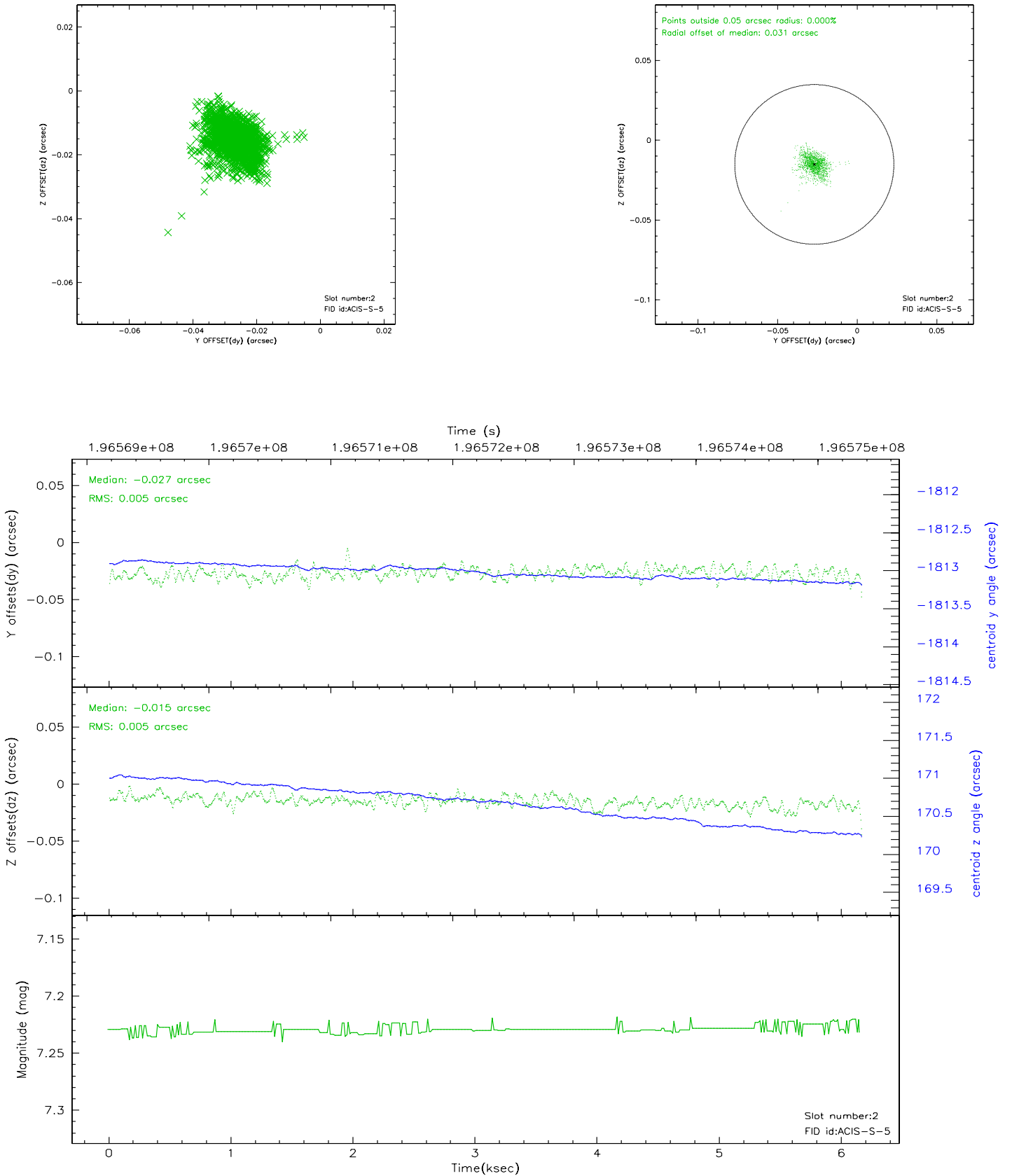
2.5.1 Slot 0



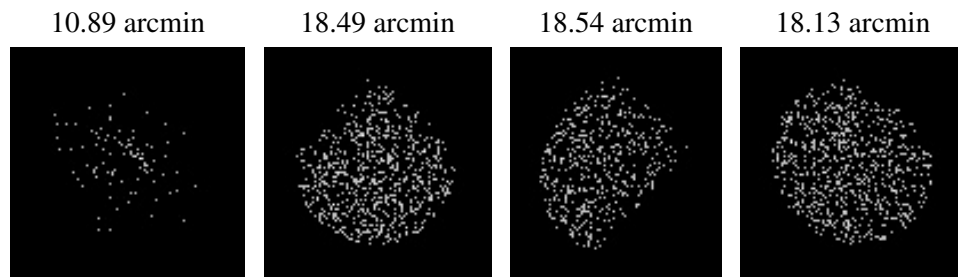
2.5.2 Slot 1



2.5.3 Slot 2



3 Point Sources



A Summary

A.1 Status

V&V Scientist	Beth Sundheim
V&V Date (YYYY-MM-DD)	2006.05.30
V&V Edition	1
V&V Disposition and Status	OK
V&V Charge Time	5.756

A.2 Comments