

V&V Reference Report

L2 ASCDS Version : 7.6.7.2

Observation 4750 - L2 Version 001
Chandra X-Ray Center

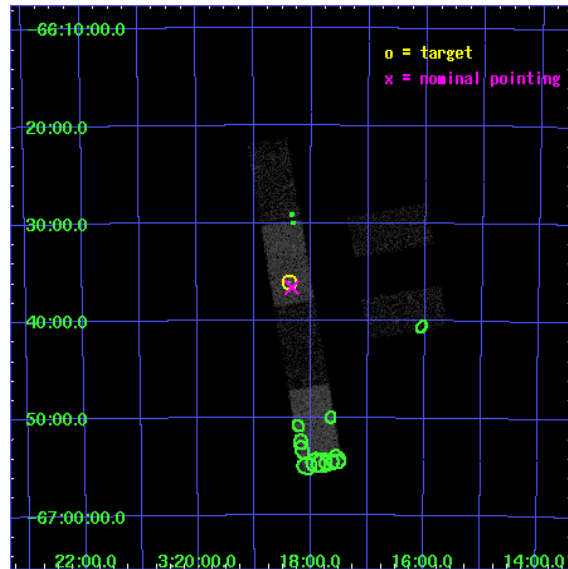
L2 Processing Date : Jun 2 2006

Contents

1	Front	2
2	OBI	3
2.1	OBI	3
2.1.1	Images	3
2.1.2	Bias	3
2.1.3	Parameters	4
2.1.4	Events	4
2.2	Compared Parameters	5
2.3	Aspect	6
2.4	Star Slots	9
2.4.1	Slot 3	9
2.4.2	Slot 4	10
2.4.3	Slot 5	11
2.4.4	Slot 6	12
2.4.5	Slot 7	13
2.5	FID Slots	14
2.5.1	Slot 0	14
2.5.2	Slot 1	15
2.5.3	Slot 2	16
3	Point Sources	17
A	Summary	18
A.1	Status	18
A.2	Comments	18

1 Front

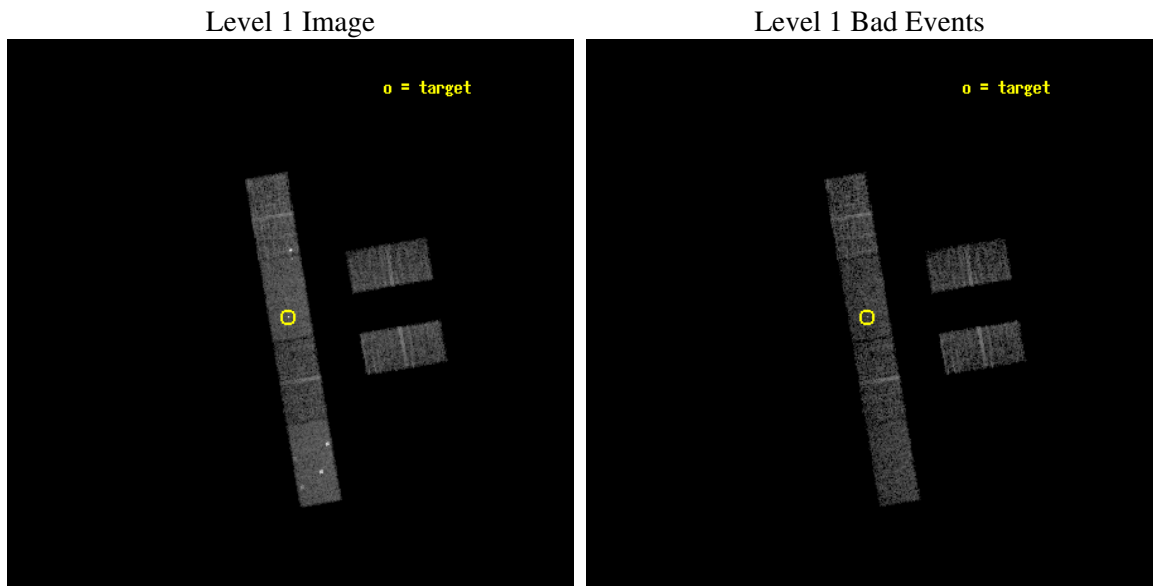
seq_num	600405
obs_id	4750
title	Observations of Intermediate Mass Black Hole Candidate Ultra-Luminous X-ray Sources
observer	Dr Jon Miller
object	NGC 1313 X-2 Obs 2
dtcycle	0
cycle	P
ra_targ	49.592917
dec_targ	-66.601028
ra_nom	49.584664089913
dec_nom	-66.610173504407
roll_nom	260.32283551791
revision	3
ontime	4759.2000315189
livetime	4653.1091430573
ontime2	4759.2000315189
ontime3	4759.2000315189
ontime5	4759.2000315189
ontime6	4759.2000315189
ontime7	4759.2000315189
ontime8	4759.2000315189
l2events	28840



2 OBI

2.1 OBI

2.1.1 Images

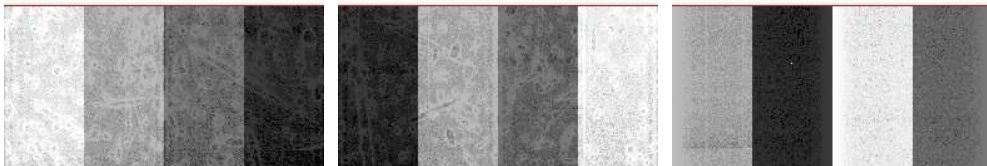


2.1.2 Bias

Chip 2

Chip 3

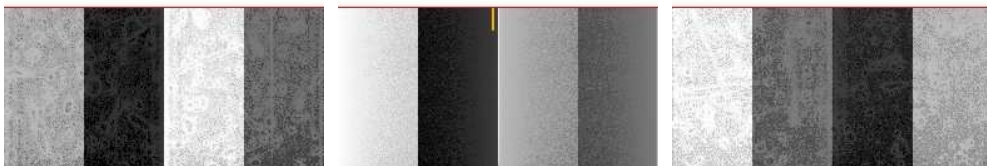
Chip 5



Chip 6

Chip 7

Chip 8



2.1.3 Parameters

obi_num	1
ascdsver	7.6.7.2
caldsver	3.2.2
date	2006-06-02T17:31:09
revision	3

sched_exp_time	5000.000000
ontime	4762.7141184211
ontime2	4762.7141184211
ontime3	4762.7141184211
ontime5	4762.714138329
ontime6	4762.7141184211
ontime7	4762.7141184211
ontime8	4762.7141184211
l1events	127562

2.1.4 Events

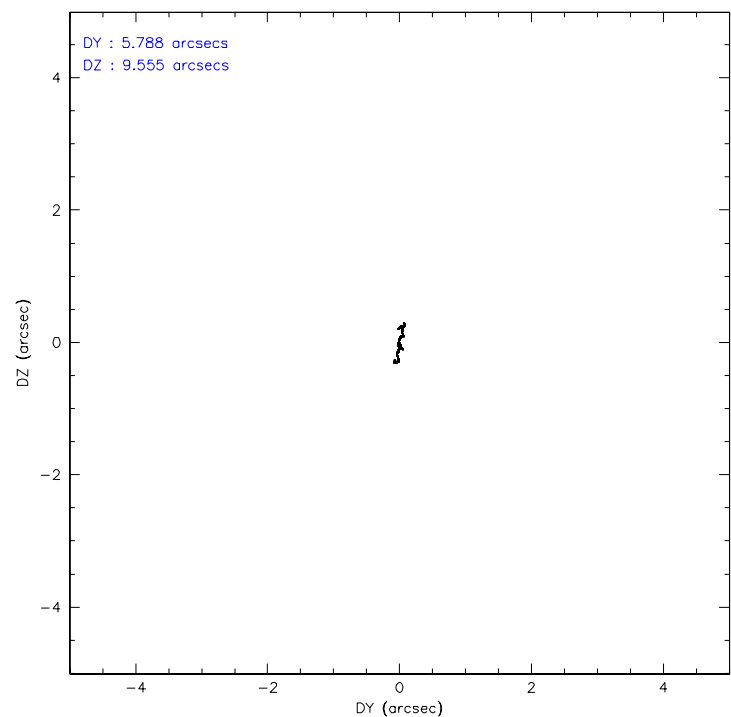
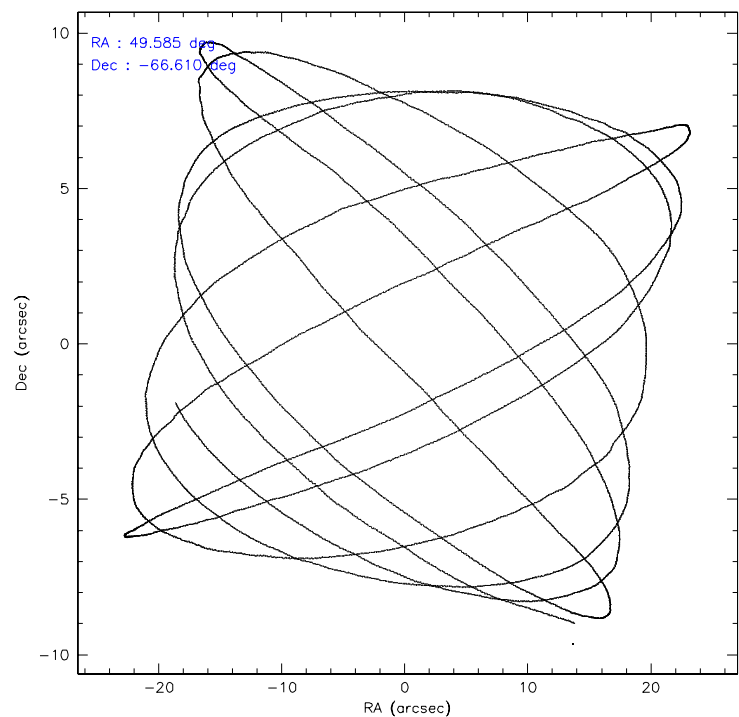
	ccd 2	ccd 3	ccd 5	ccd 6	ccd 7	ccd 8
level 1 events	18387	16542	27985	16098	23927	24623
rejected events	16275	14612	13827	14094	13936	17888
rejected %	88%	88%	49%	87%	58%	72%

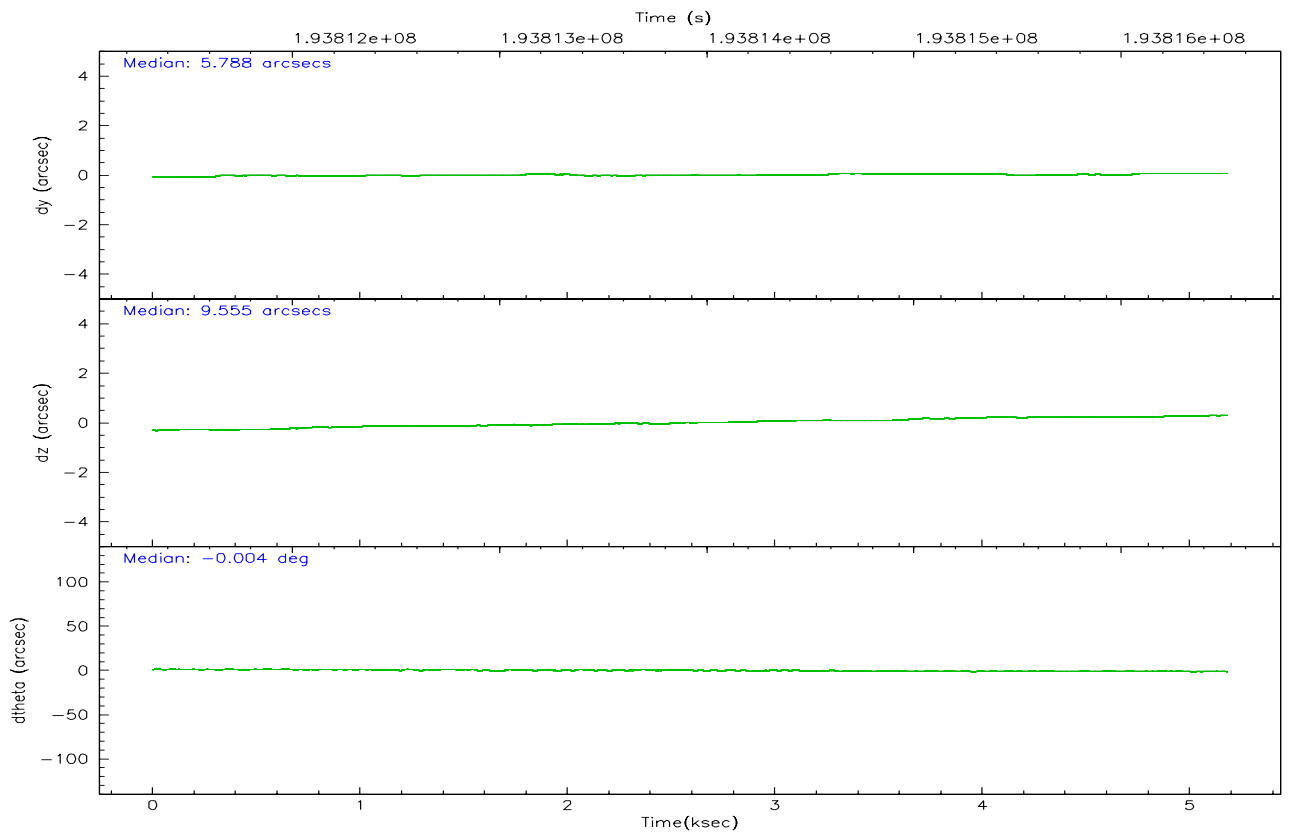
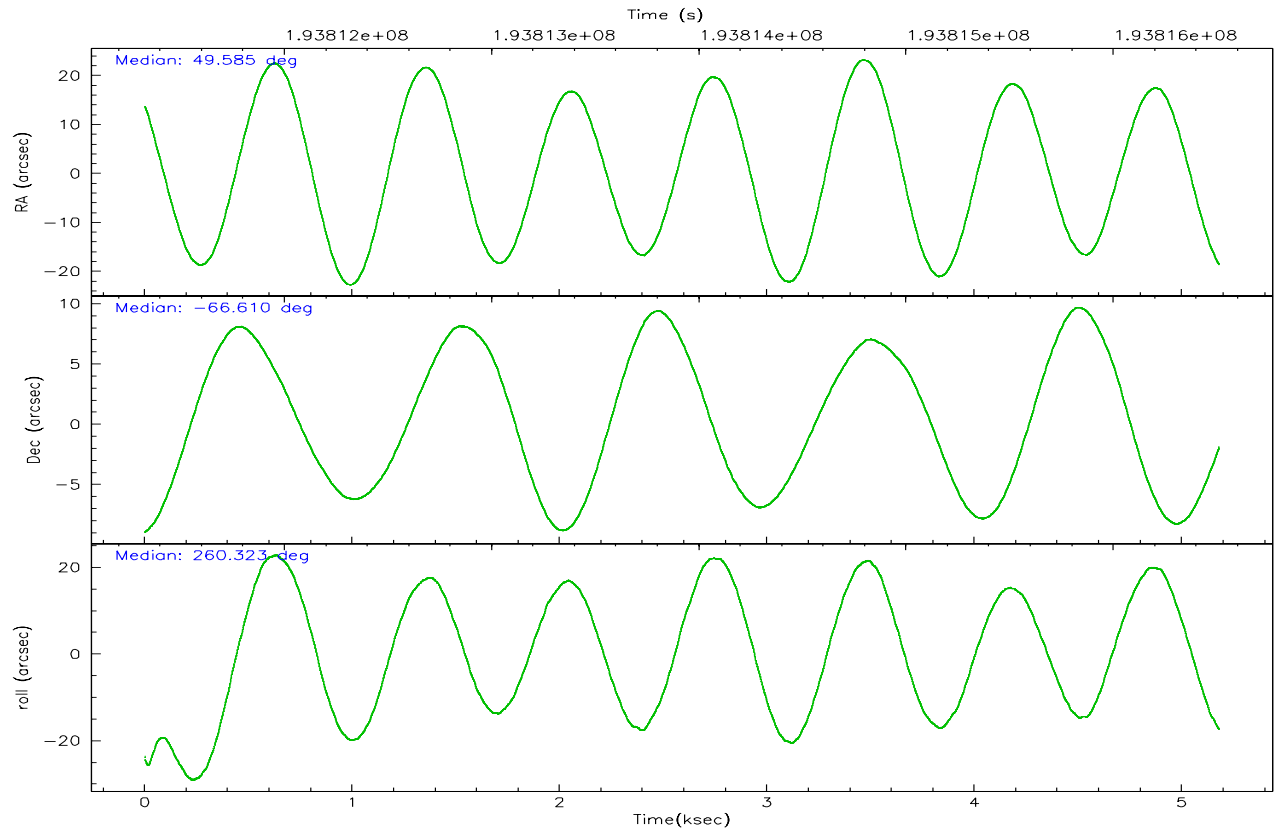
	ccd 2	ccd 3	ccd 5	ccd 6	ccd 7	ccd 8
grade 0 events	876	768	4202	789	857	2936
	4%	4%	15%	4%	3%	11%
grade 1 events	8	4	26	3	23	28
	0%	0%	0%	0%	0%	0%
grade 2 events	435	353	3421	357	2543	1252
	2%	2%	12%	2%	10%	5%
grade 3 events	249	229	329	262	712	548
	1%	1%	1%	1%	2%	2%
grade 4 events	235	245	250	215	644	516
	1%	1%	0%	1%	2%	2%
grade 5 events	699	758	1210	684	1694	975
	3%	4%	4%	4%	7%	3%
grade 6 events	325	335	5971	384	5243	1483
	1%	2%	21%	2%	21%	6%
grade 7 events	15560	13850	12576	13404	12211	16885
	84%	83%	44%	83%	51%	68%

2.2 Compared Parameters

Parameter	Planned	Actual	Parameter	Planned	Actual
Instrument	ACIS	ACIS	Obspar format version number	6	6
Detector	ACIS-235678	ACIS-235678	Obspar file type	PREDICTED	ACTUAL
Grating	NONE	NONE	Obspar update status	NONE	UPDATED
Data mode	FAINT	FAINT	On-chip summing requested	N	N
Observation mode	POINTING	POINTING	Subarray requested	1/2	1/2
Pointing RA	49.560016	49.58466408991325	Subarray start row	0	257
Pointing Dec	-66.584724	-66.61017350440736	Subarray row count	1024	512
Pointing Roll	260.143590	260.322835517907	Alternating exposures requested	N	N
SIM focus pos (mm)	-0.684267	-0.6828225247311905	Primary exposure time	0.000000	1.8
SIM defocus (mm)	0	0.001444936568705701			
SIM translation stage pos (mm)	-190.132523	-190.1400660498719			
SIM translation stage offset (mm)	0	0.00754346686406393			
Observation start time	193811510.184000	193811133.99476			
Observation start date	2004-02-22T04:30:46	2004-02-22T04:25:33			
Observation end time	193816510.184000	193817318.84503			
Observation end date	2004-02-22T05:54:06	2004-02-22T06:08:38			
Read mode	TIMED	TIMED			

2.3 Aspect



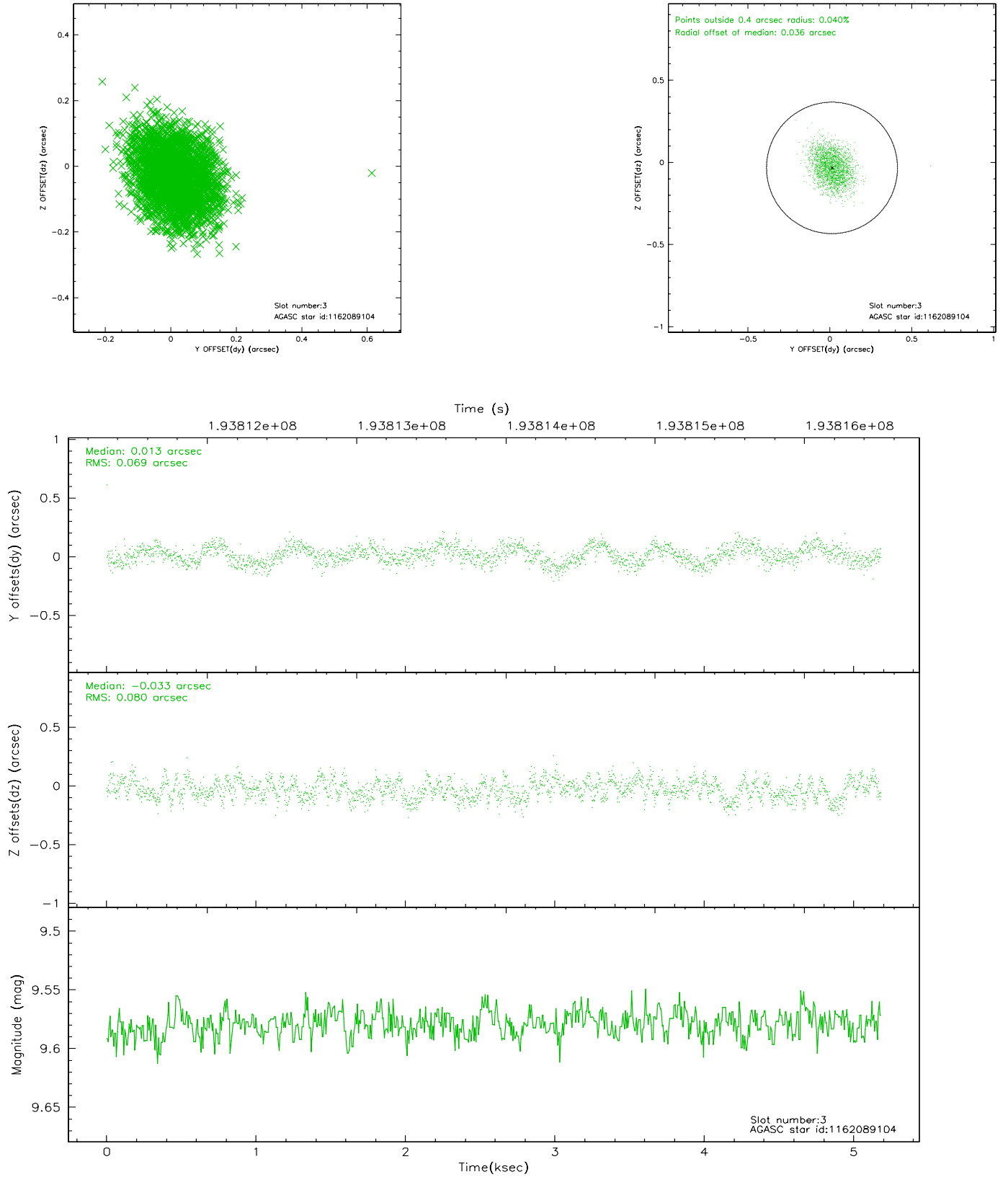


Slot Statistics

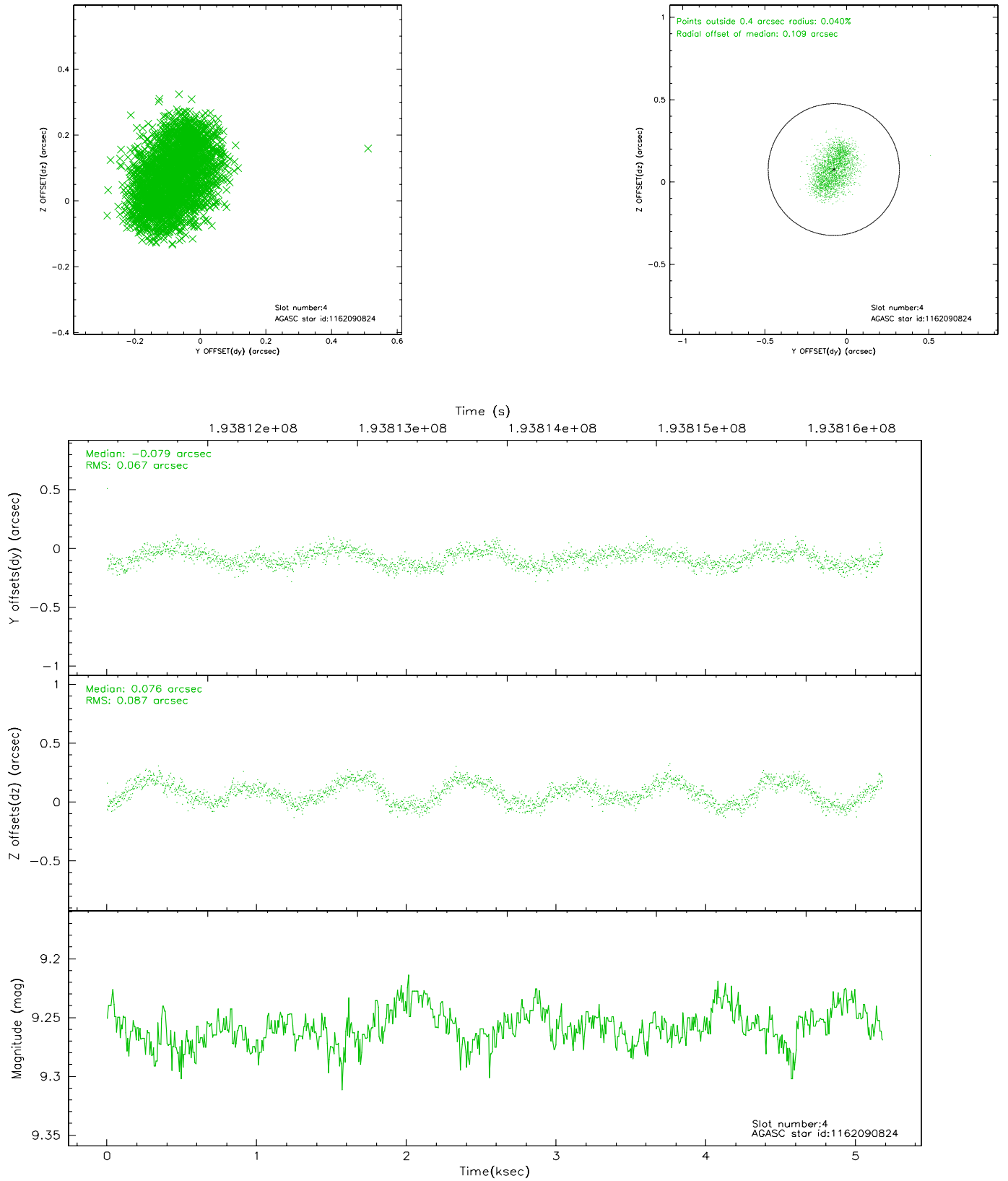
slot	status	id	mag	n_pts	med_dy	med_dz	dr1	dr2	ra	dec	mean_y	mean_z
0	FID	ACIS-S-2	7.09	1264	-0.049	-0.007	0.008	0.012	0.000000	0.000000	-758.55	-1730.81
1	FID	ACIS-S-4	7.20	1264	0.046	0.026	0.005	0.008	0.000000	0.000000	2154.28	176.52
2	FID	ACIS-S-5	7.23	1264	-0.028	-0.009	0.007	0.013	0.000000	0.000000	-1809.88	171.46
3	GUIDE	1162089104	9.58	2524	0.013	-0.033	0.113	0.174	48.422126	-66.410699	-321.53	-1719.44
4	GUIDE	1162090824	9.26	2527	-0.079	0.076	0.121	0.176	48.677982	-66.885202	1288.01	-1041.76
5	GUIDE	1162094224	9.66	2526	0.123	-0.180	0.244	0.334	49.638584	-66.701903	397.53	182.13
6	GUIDE	1162095544	10.21	2525	-0.026	0.070	0.133	0.238	48.846024	-66.171463	-1281.73	-1276.30
7	GUIDE	1162087624	8.83	2527	-0.022	0.081	0.118	0.188	48.473273	-67.184779	2400.74	-1122.48

2.4 Star Slots

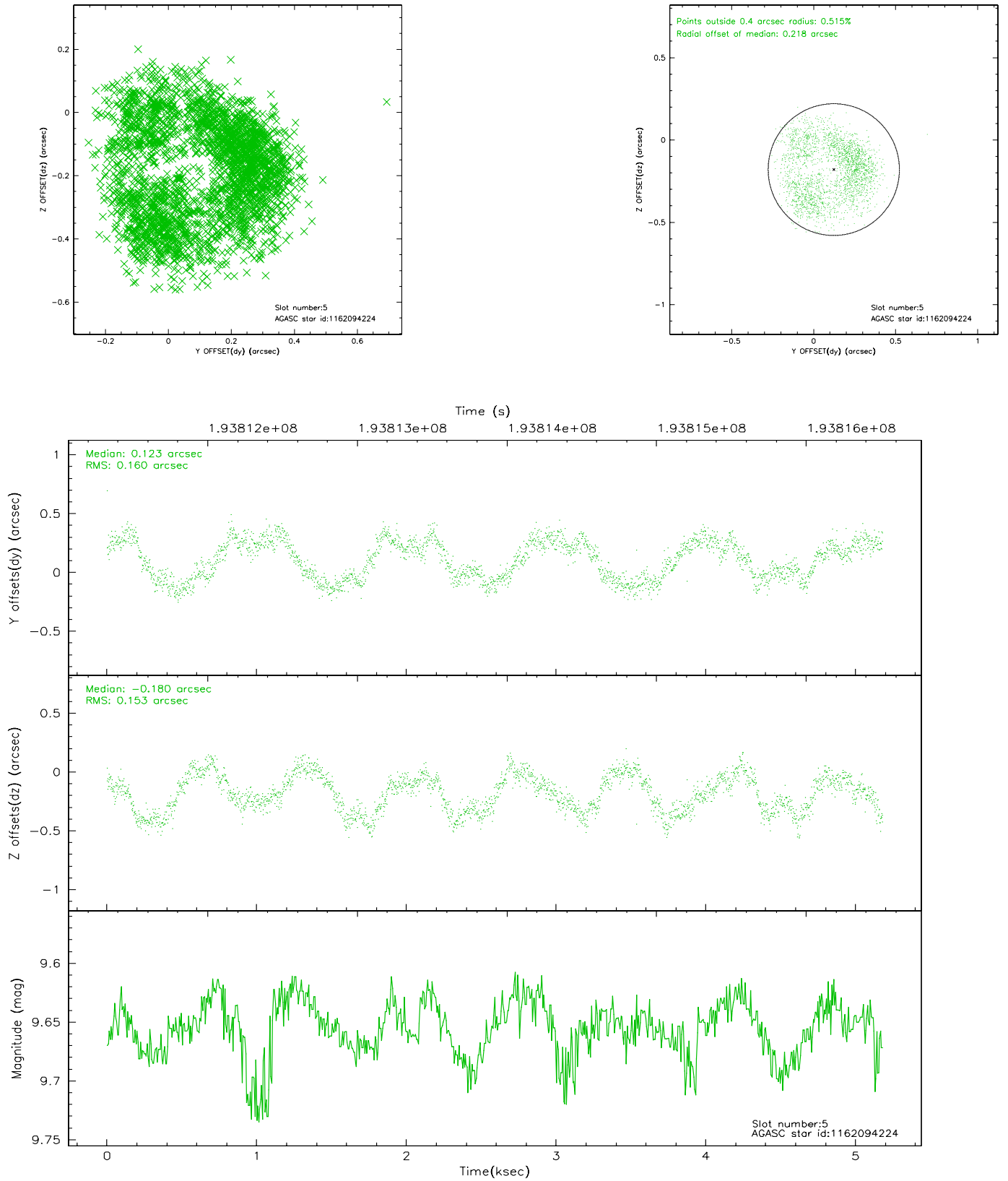
2.4.1 Slot 3



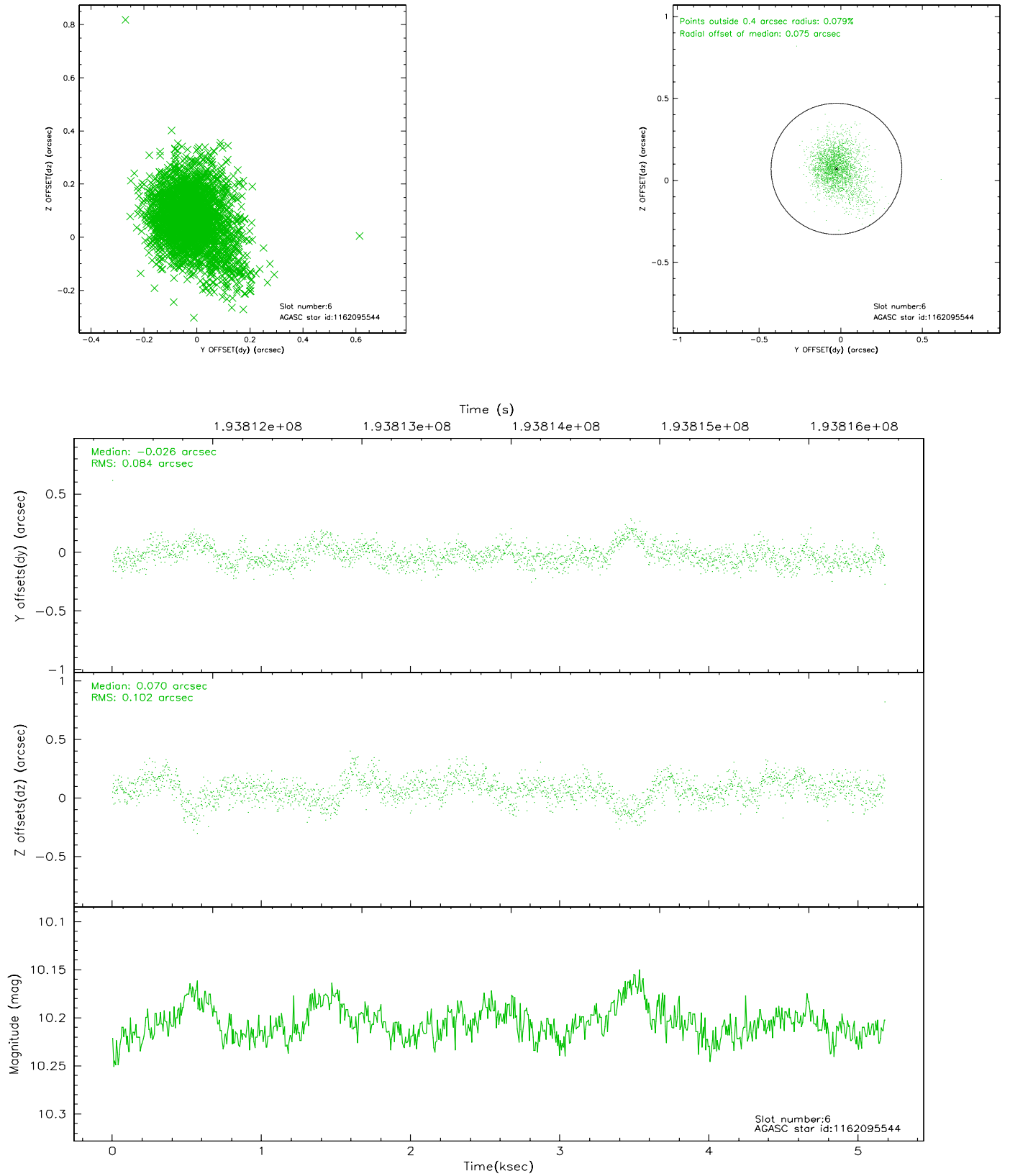
2.4.2 Slot 4



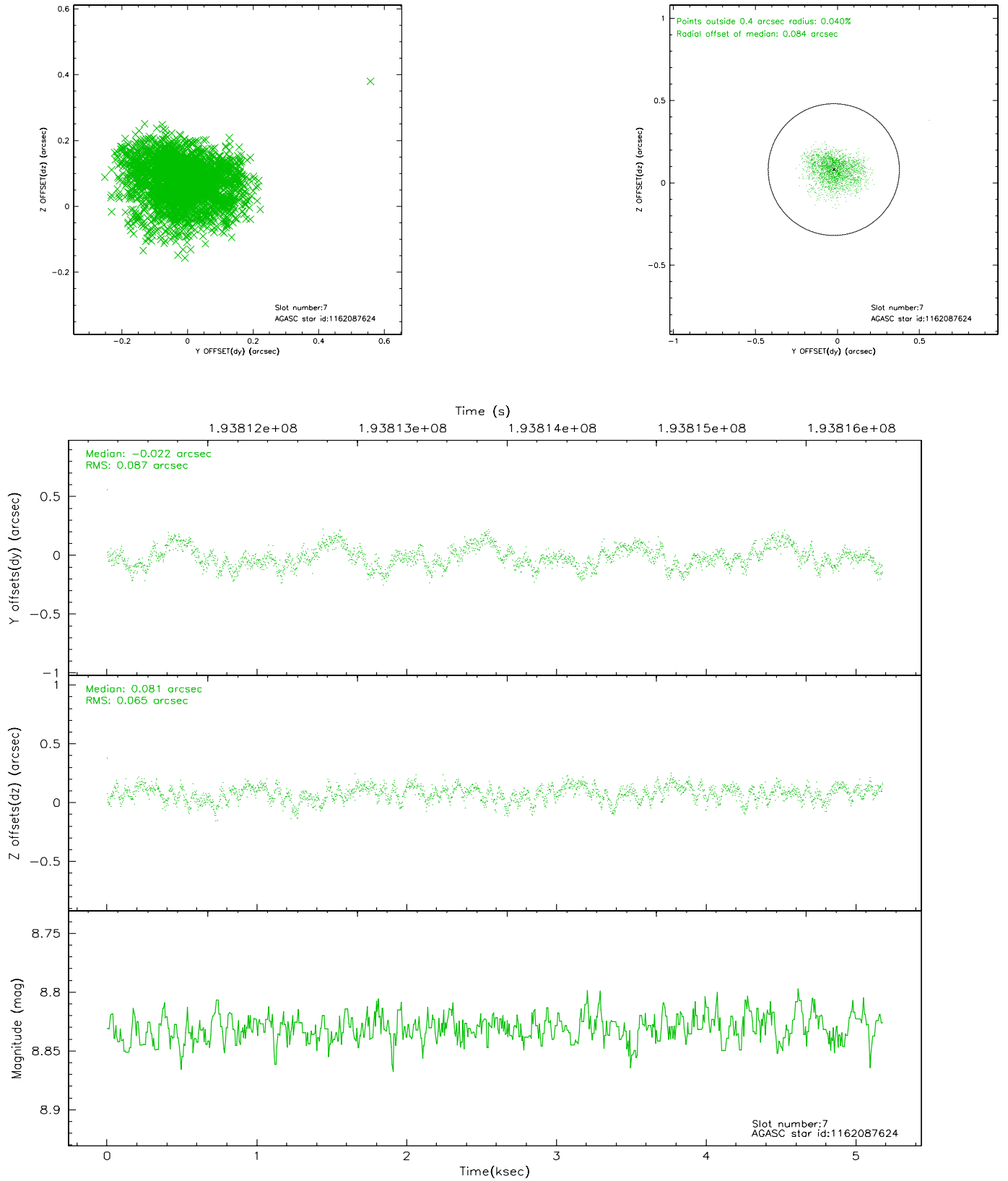
2.4.3 Slot 5



2.4.4 Slot 6

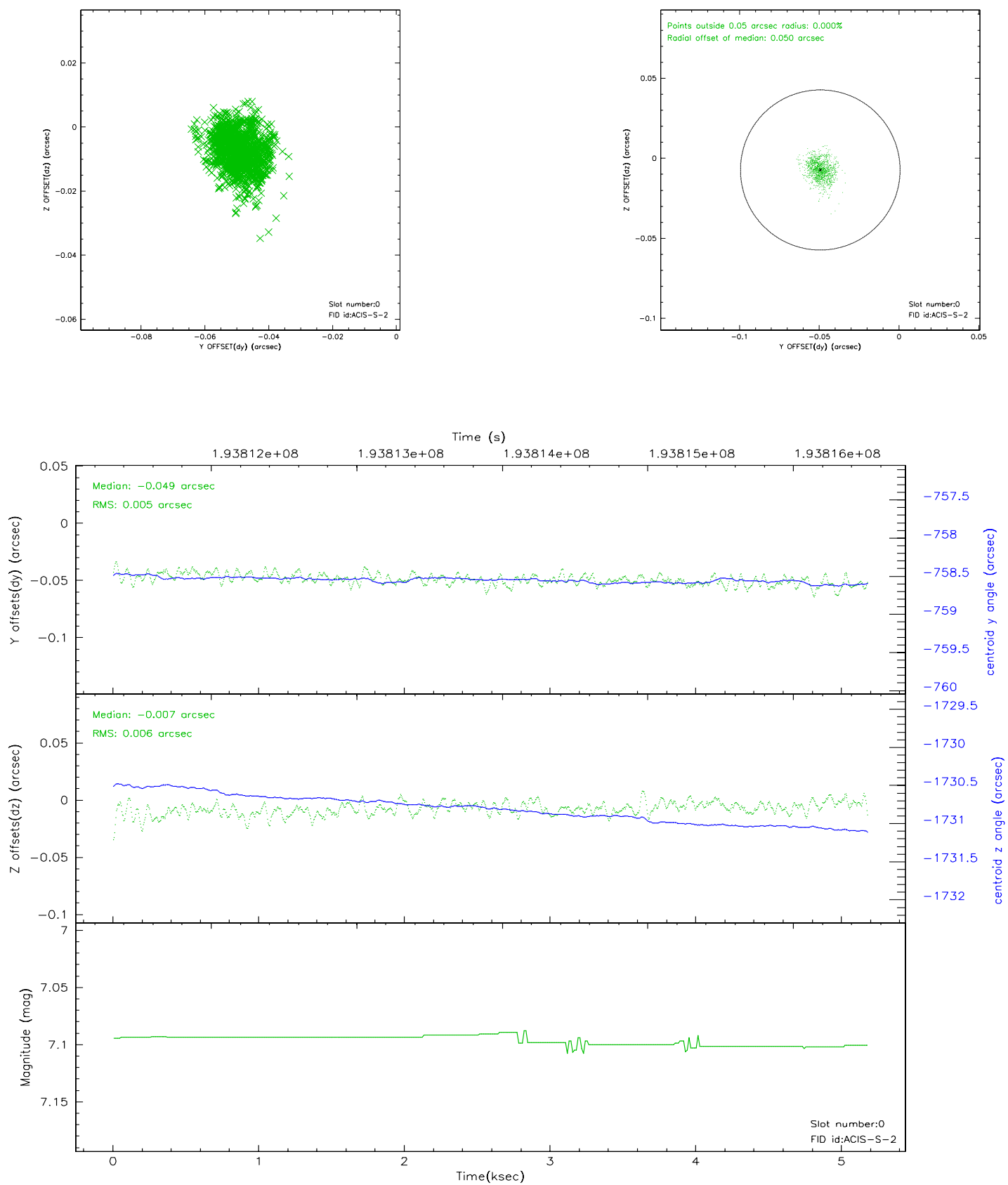


2.4.5 Slot 7

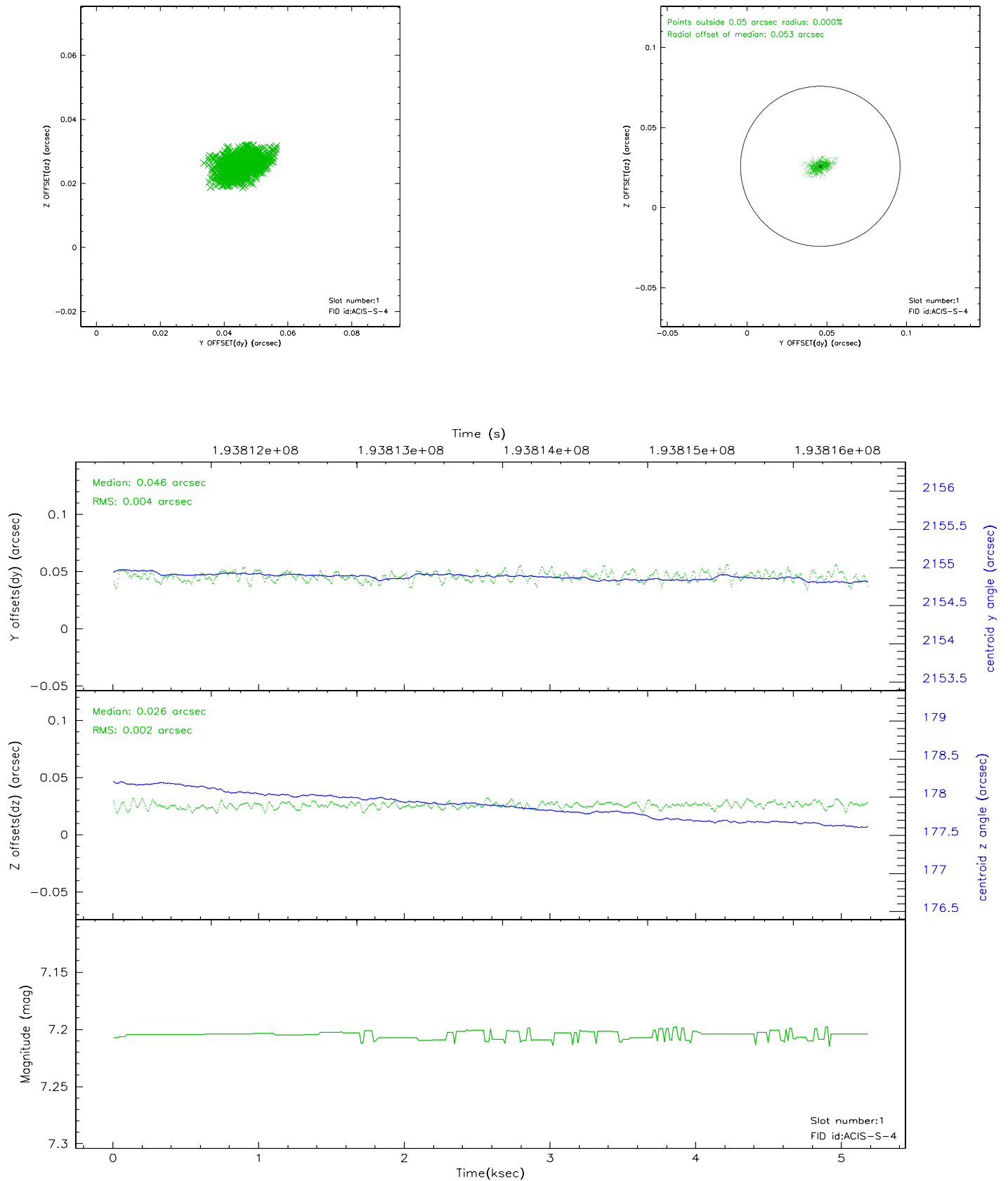


2.5 FID Slots

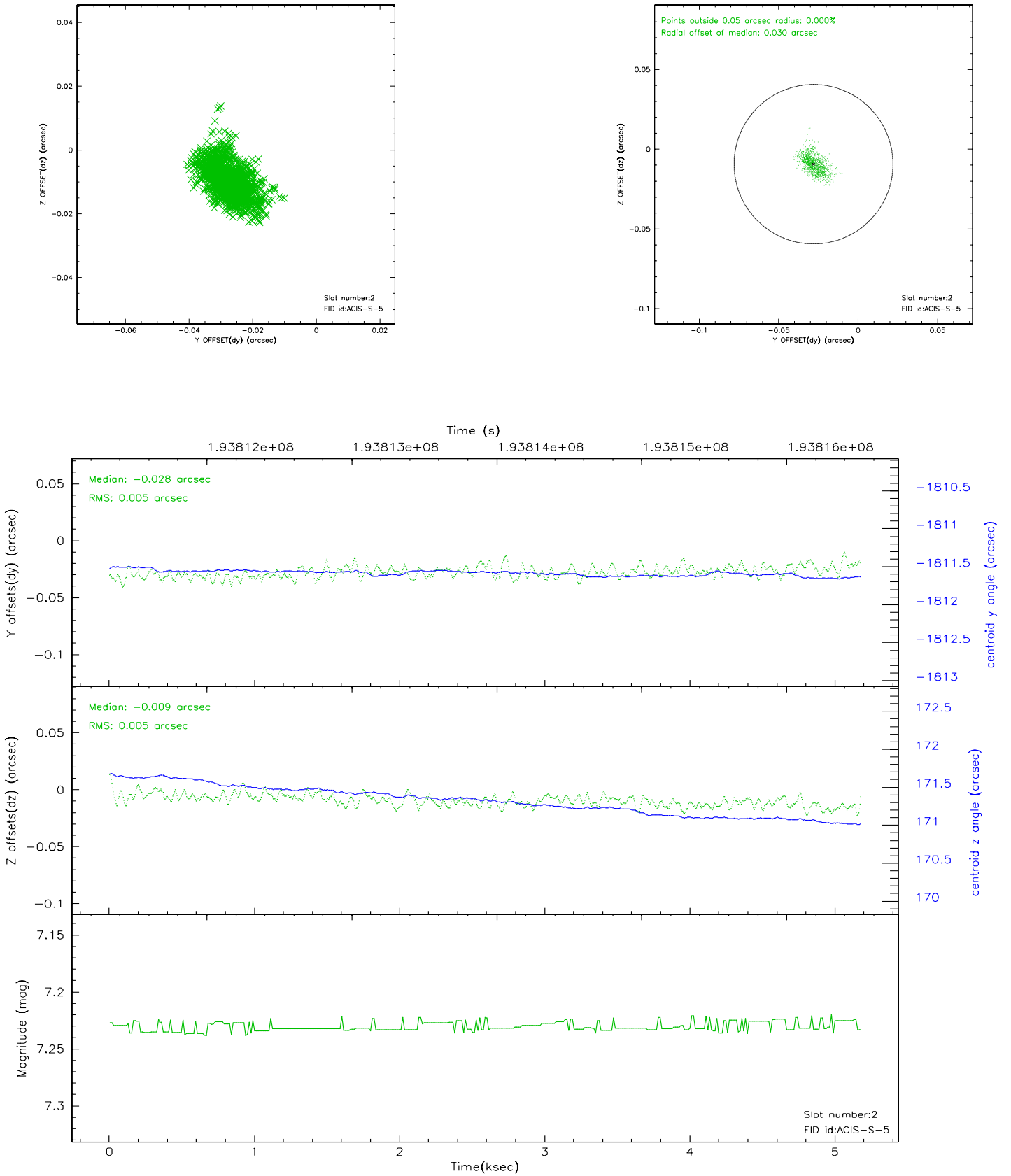
2.5.1 Slot 0



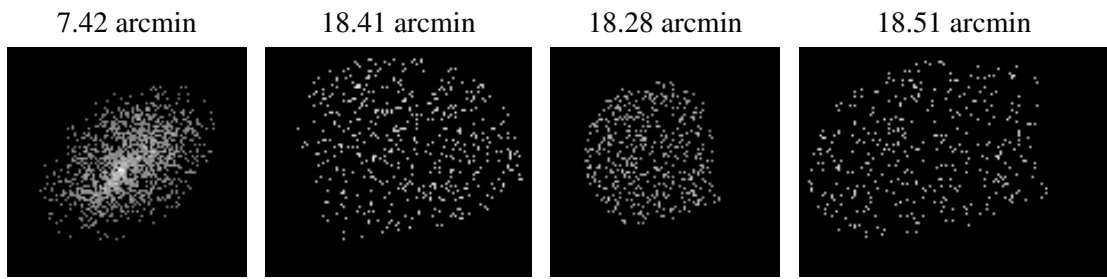
2.5.2 Slot 1



2.5.3 Slot 2



3 Point Sources



A Summary

A.1 Status

V&V Scientist	Jen Lauer
V&V Date (YYYY-MM-DD)	2006.06.04
V&V Edition	1
V&V Disposition and Status	OK
V&V Charge Time	4.761

A.2 Comments

Window preference met.