

V&V Reference Report

L2 ASCDS Version : 8.4.5

Observation 4270 - L2 Version 3
Chandra X-Ray Center

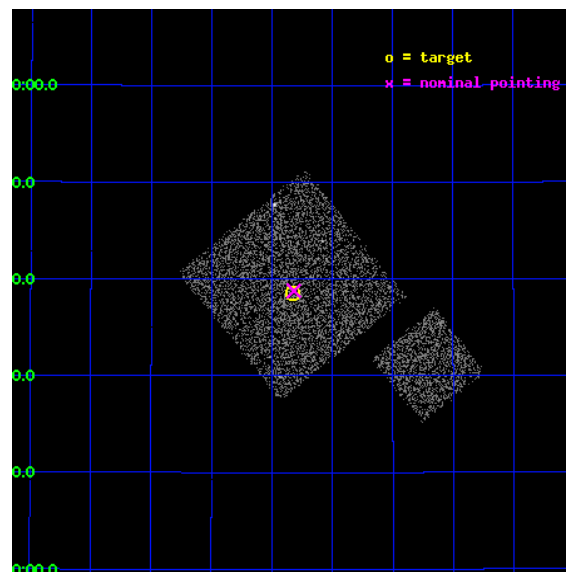
L2 Processing Date : Oct 24 2012

Contents

1	Front	2
2	OBI	3
2.1	OBI	3
2.1.1	Images	3
2.1.2	Bias	3
2.1.3	Parameters	4
2.1.4	Events	4
2.2	Compared Parameters	5
2.3	Aspect	6
2.4	Star Slots	9
2.4.1	Slot 3	9
2.4.2	Slot 4	10
2.4.3	Slot 5	11
2.4.4	Slot 6	12
2.4.5	Slot 7	13
2.5	FID Slots	14
2.5.1	Slot 0	14
2.5.2	Slot 1	15
2.5.3	Slot 2	16
A	Summary	17
A.1	Status	17
A.2	Comments	17

1 Front

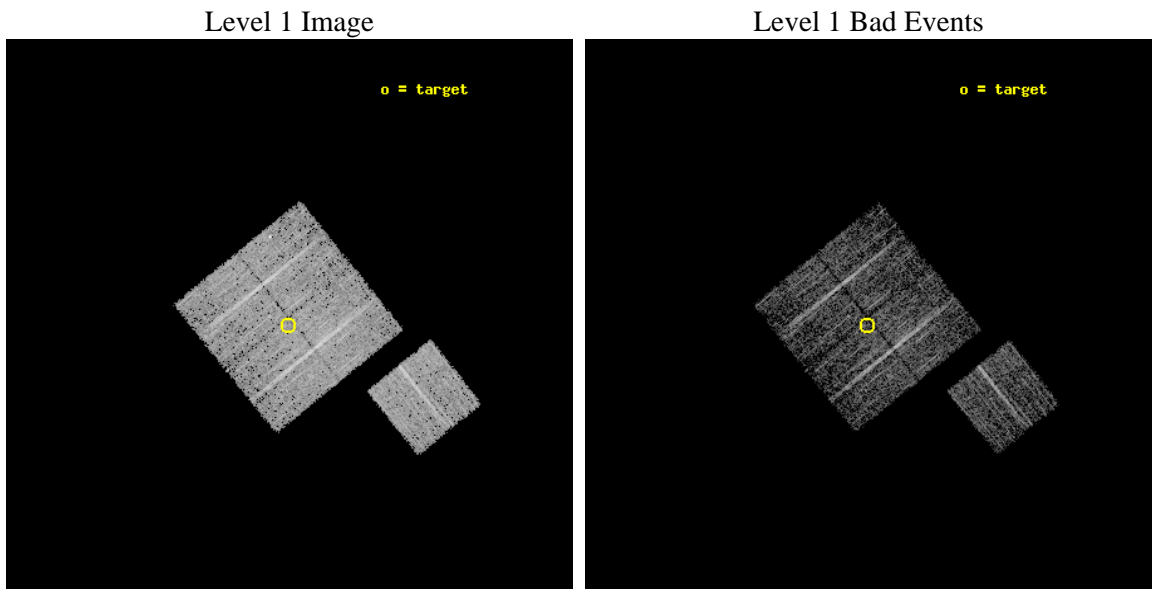
seq_num	900313	Sequence number
obs_id	4270	Observation id
title	A CHANDRA WIDE-FIELD SURVEY TO MAP THE COSMIC WEB AND INVESTIGATE THE EVOLUTION OF NUCLEAR ACCRETION	Proposal title
observer	Dr. Christine Jones	Principal investigator
object	SS33	Source name
dtcycle	0	
cycle	P	events from which exps? Prim/Second/Both
ra_targ	216.957163	Observer's specified target RA [deg]
dec_targ	32.642142	Observer's specified target Dec [deg]
ra_nom	216.95453734071	Nominal RA [deg]
dec_nom	32.646237314882	Nominal Dec [deg]
roll_nom	141.01011750704	Nominal Roll [deg]
revision	3	Processing version of data
ontime	5021.062034905	Sum of GTIs [s]
livetime	4955.4581629668	Livetime [s]
ontime0	5020.9389148951	Sum of GTIs [s]
ontime1	5017.8389646411	Sum of GTIs [s]
ontime2	5021.0209949017	Sum of GTIs [s]
ontime3	5021.062034905	Sum of GTIs [s]
ontime6	5020.8978748918	Sum of GTIs [s]
l2events	10480	Number of level 2 events



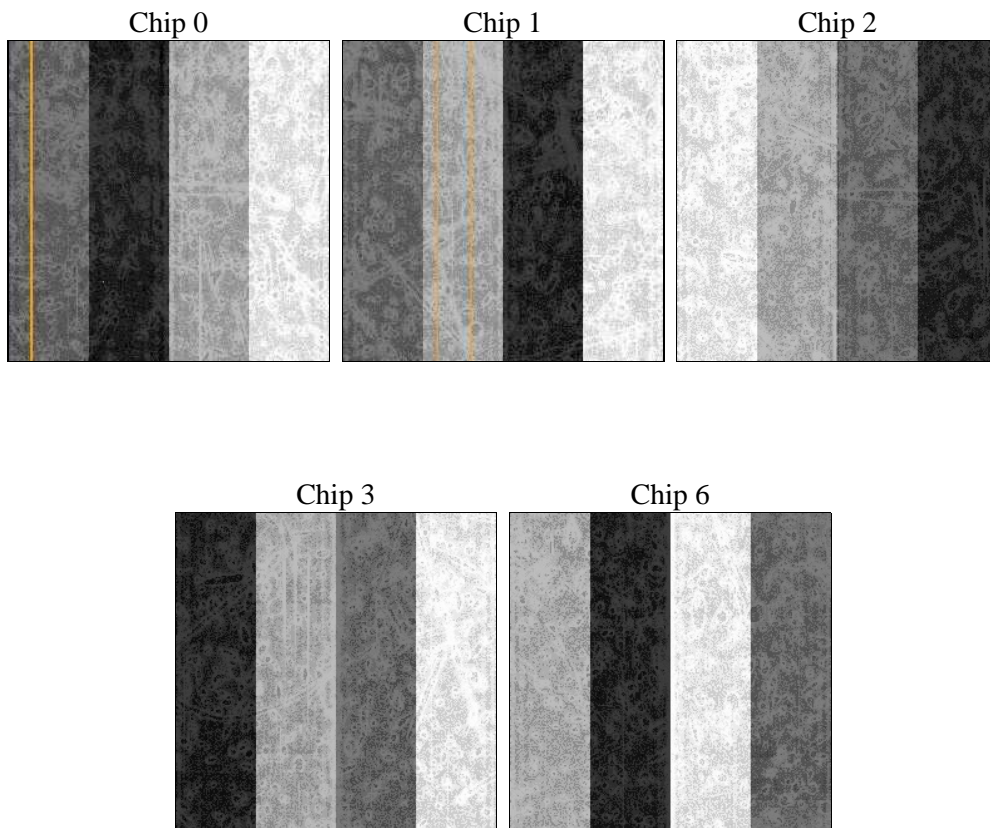
2 OBI

2.1 OBI

2.1.1 Images



2.1.2 Bias



2.1.3 Parameters

obi_num	0	Obi number	sched_exp_time	4900.000000	[s] Scheduled observation exposure time
ascdsver	8.4.5	Processing system revision	ontime	5021.062034905	Sum of GTIs [s]
caldsver	4.5.2	 	ontime0	5020.9389148951	Sum of GTIs [s]
date	2012-10-24T23:44:52	Date and time of file creation	ontime1	5017.8389646411	Sum of GTIs [s]
revision	3	Processing version of data	ontime2	5021.0209949017	Sum of GTIs [s]
			ontime3	5021.062034905	Sum of GTIs [s]
			ontime6	5020.8978748918	Sum of GTIs [s]
			l1events	124112	Number of level 1 events

2.1.4 Events

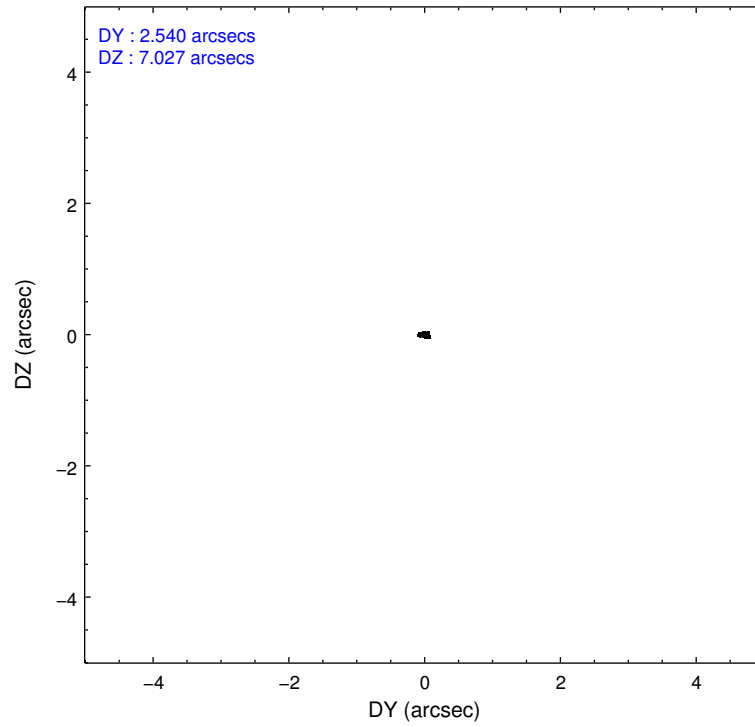
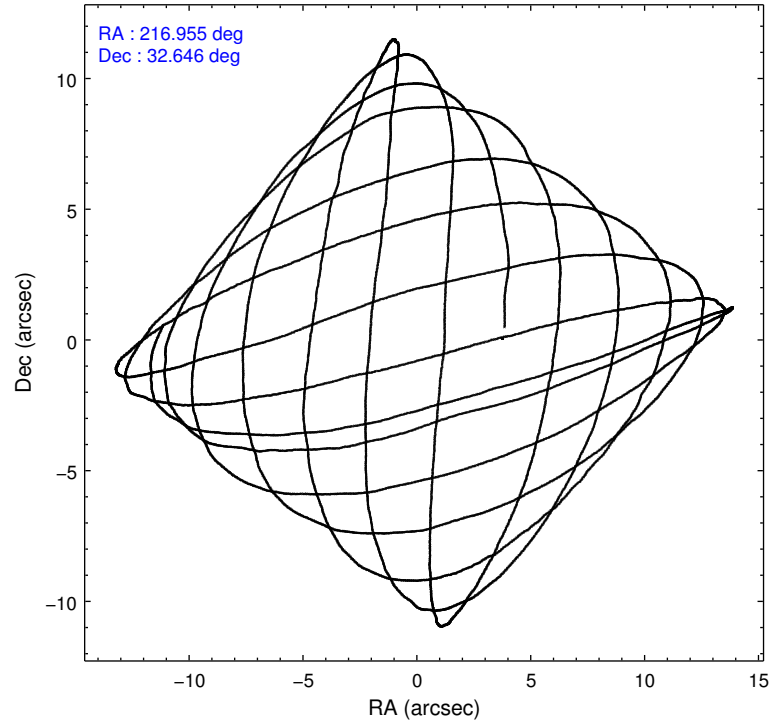
	ccd 0	ccd 1	ccd 2	ccd 3	ccd 6
level 1 events	24048	24253	26504	24069	25238
rejected events	21117	21674	24066	21774	22746
rejected %	87%	89%	90%	90%	90%

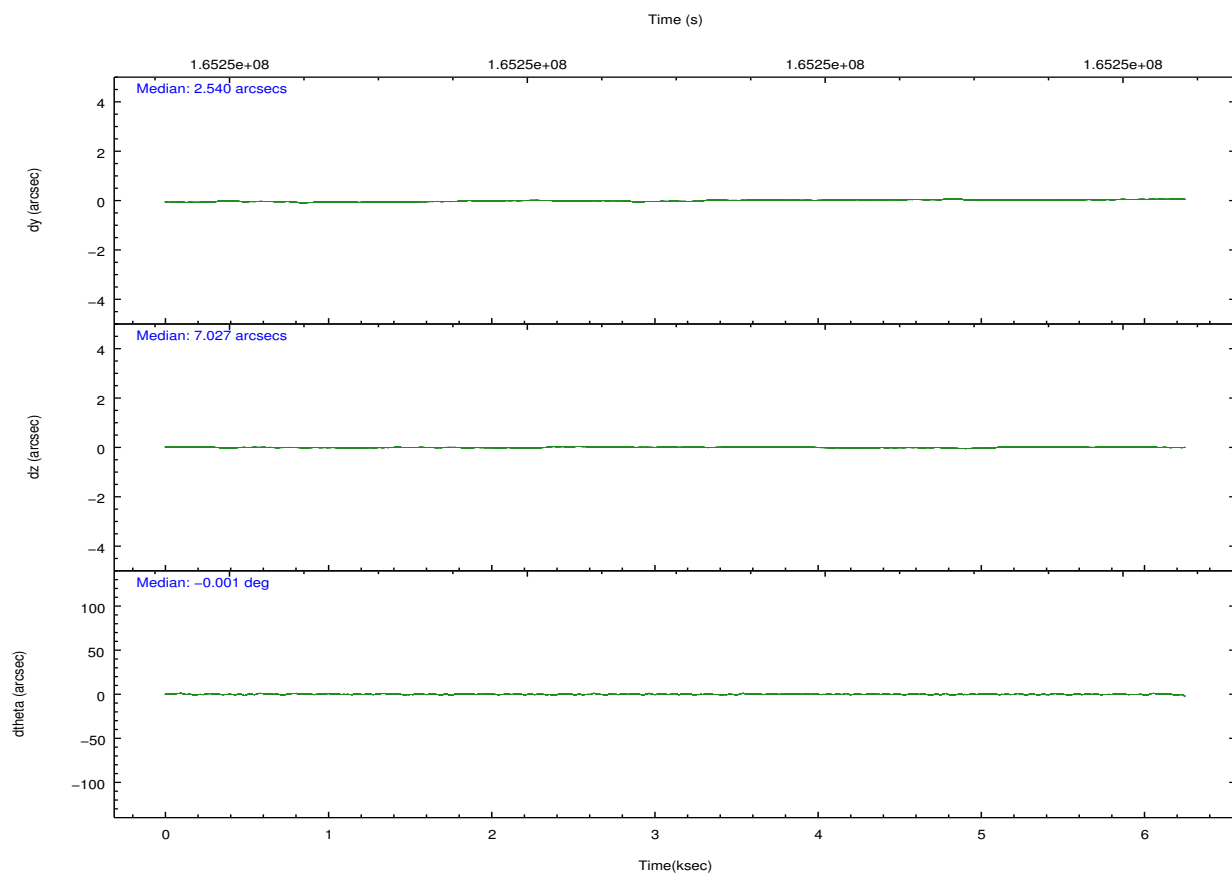
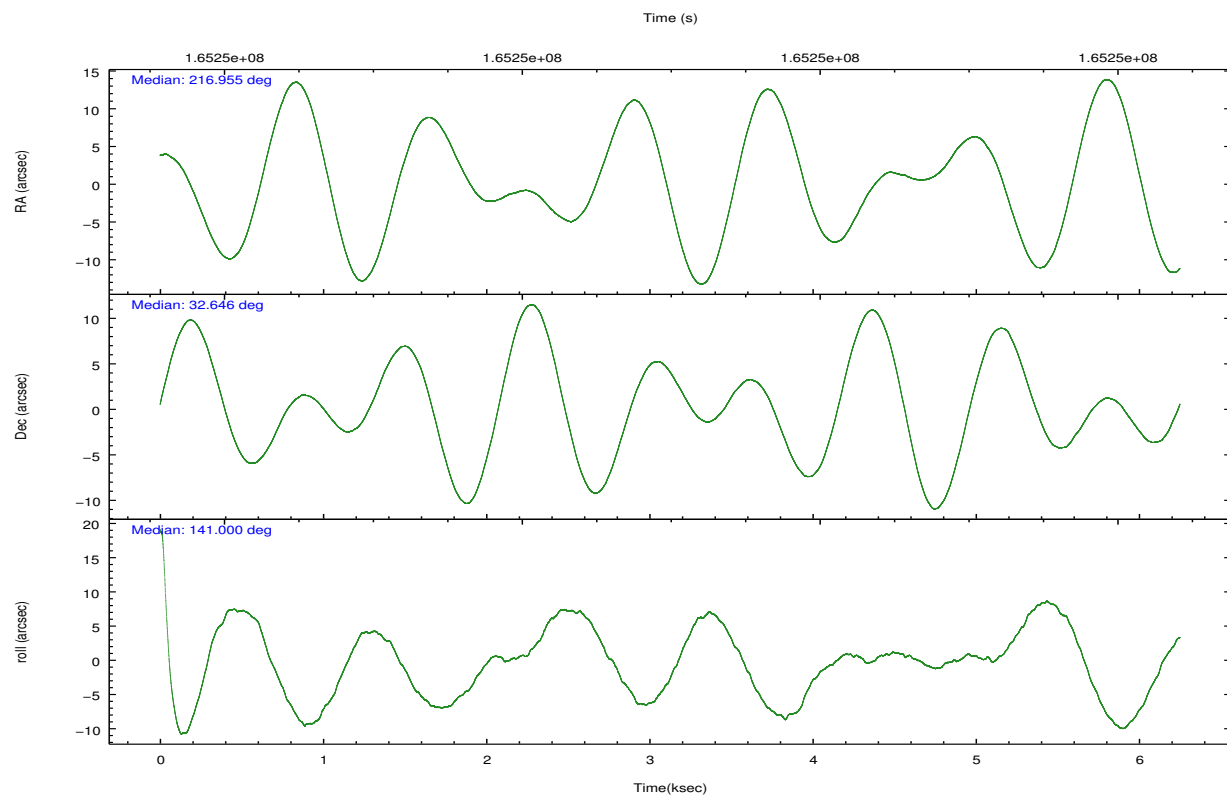
	ccd 0	ccd 1	ccd 2	ccd 3	ccd 6
grade 0 events	1256	876	1001	861	877
	5%	3%	3%	3%	3%
grade 1 events	17	9	9	11	9
	0%	0%	0%	0%	0%
grade 2 events	608	603	529	474	537
	2%	2%	1%	1%	2%
grade 3 events	310	314	272	302	304
	1%	1%	1%	1%	1%
grade 4 events	289	304	261	243	269
	1%	1%	0%	1%	1%
grade 5 events	762	833	704	835	833
	3%	3%	2%	3%	3%
grade 6 events	470	482	376	417	508
	1%	1%	1%	1%	2%
grade 7 events	20336	20832	23352	20926	21901
	84%	85%	88%	86%	86%

2.2 Compared Parameters

Parameter	Planned	Actual	Parameter	Planned	Actual
Instrument	ACIS	ACIS	Obspar format version number	7	7
Detector	ACIS-01236	ACIS-01236	Obspar file type	PREDICTED	ACTUAL
Grating	NONE	NONE	Obspar update status	NONE	UPDATED
Data mode	VFAINT	VFAINT	Number of optional ACIS chips dropped	0	0
Observation mode	POINTING	POINTING	On-chip summing requested	N	N
[deg] Pointing RA	216.986714	216.9545373407051	Subarray requested	NONE	NONE
[deg] Pointing Dec	32.642066	32.64623731488157	Alternating exposures requested	N	N
[deg] Pointing Roll	140.784056	141.0101175070418	[s] Primary exposure time	0.000000	3.1
[mm] SIM focus pos	-0.782348	-0.7809083437167272			
[mm] SIM defocus	0	0.001439871863259334			
[mm] SIM translation stage pos	-233.592463	-233.5874344608287			
[mm] SIM translation stage offset	0	-0.005018542100998502			
[s] Observation start time (MET)	165247220.184000	165245675.29383			
Observation start date	2003-03-28T13:59:16	2003-03-28T13:34:35			
[s] Observation end time (MET)	165252120.184000	165252254.76911			
Observation end date	2003-03-28T15:20:56	2003-03-28T15:24:14			
Read mode	TIMED	TIMED			

2.3 Aspect



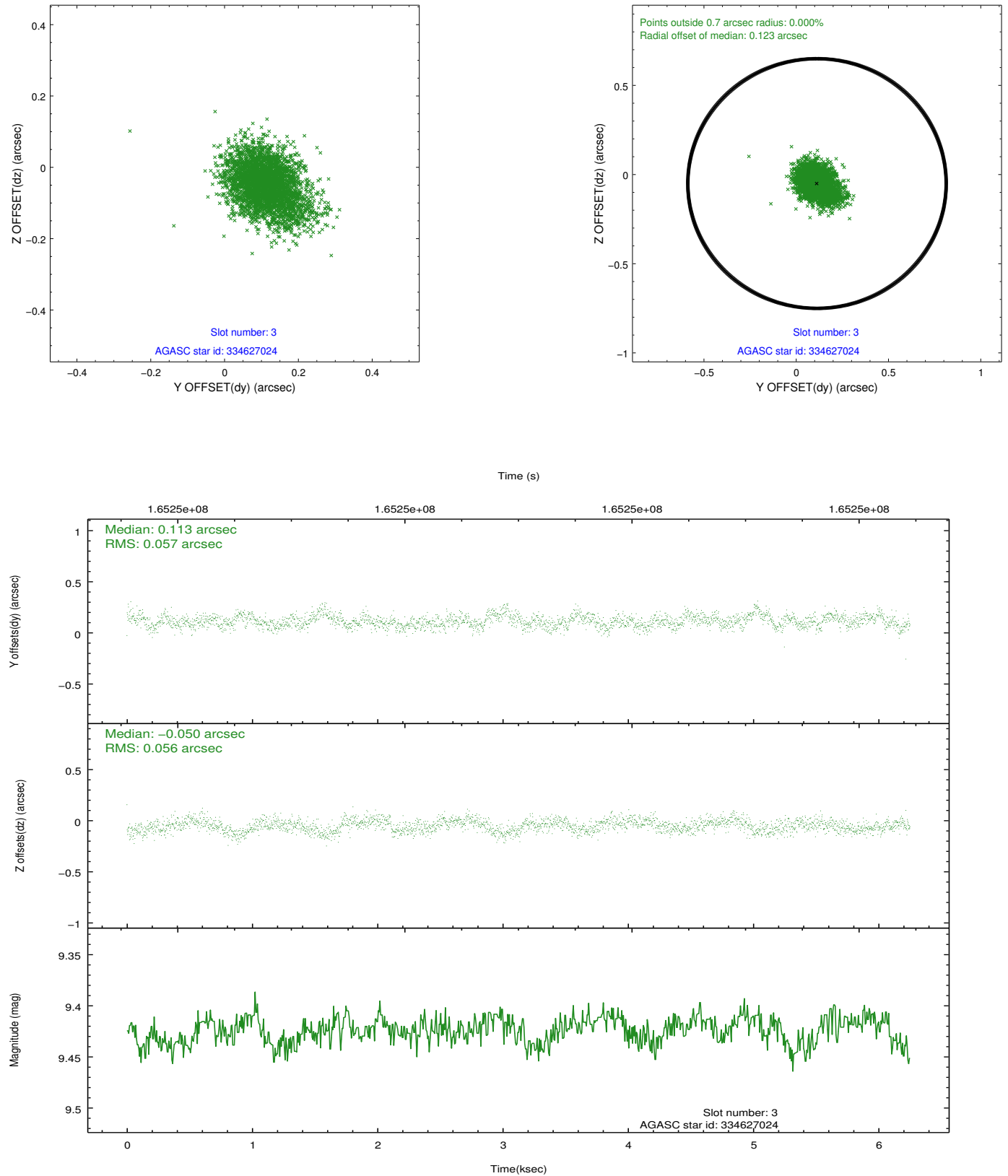


Slot Statistics

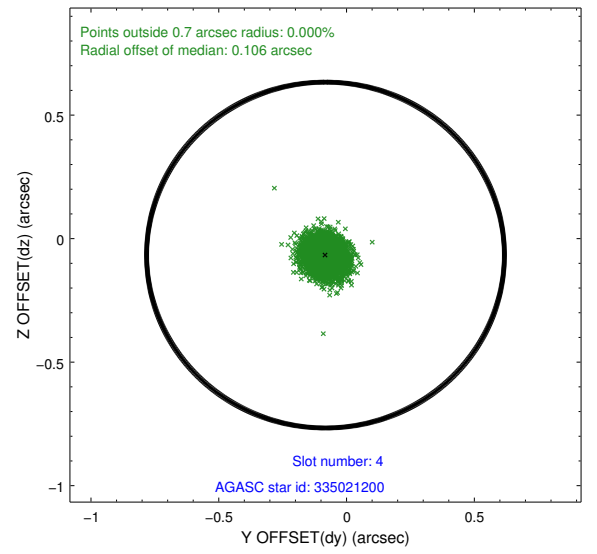
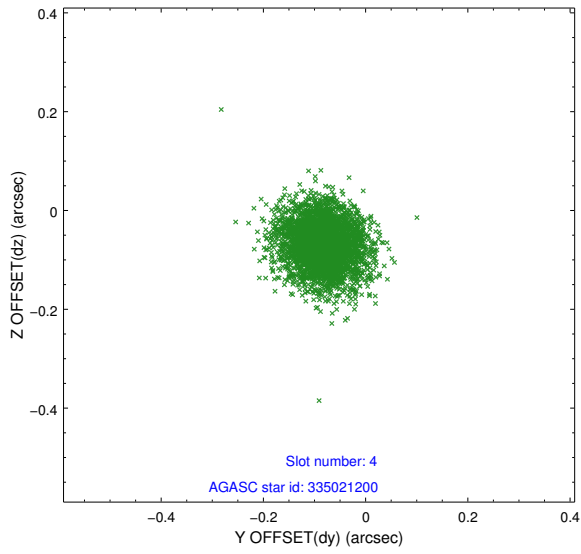
slot	status	id	mag	n_pts	med_dy	med_dz	dr1	dr2	ra	dec	mean_y	mean_z
0	FID	ACIS-I-1	7.25	1525	0.015	0.006	0.007	0.012	0.000000	0.000000	937.27	-830.43
1	FID	ACIS-I-5	7.24	1525	-0.079	0.057	0.006	0.011	0.000000	0.000000	-1810.37	1066.69
2	FID	ACIS-I-6	7.26	1525	-0.027	0.008	0.007	0.011	0.000000	0.000000	401.80	1712.17
3	GUIDE	334627024	9.42	3049	0.113	-0.050	0.084	0.139	217.318801	32.278221	-1610.13	374.34
4	GUIDE	335021200	8.85	3050	-0.082	-0.067	0.066	0.106	216.377257	32.627867	1402.21	1204.26
5	GUIDE	335028240	9.18	3049	0.057	-0.025	0.104	0.170	216.746851	33.385009	2251.41	-1616.11
6	GUIDE	335029368	10.13	3044	-0.129	0.224	0.145	0.248	217.181018	33.065030	509.92	-1550.89
7	GUIDE	334635688	8.44	3047	0.041	-0.076	0.089	0.145	217.014858	31.788165	-2010.31	2326.52

2.4 Star Slots

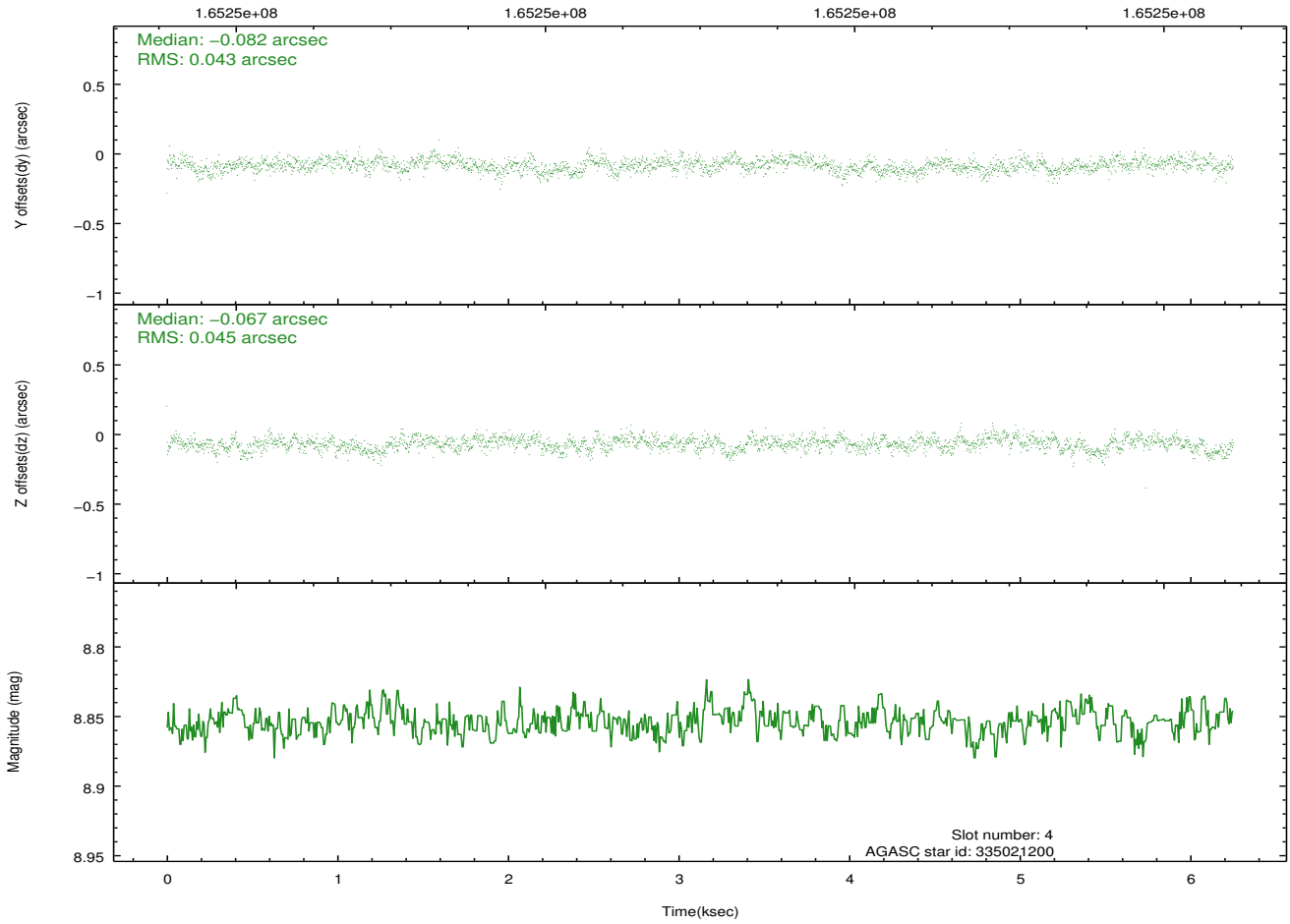
2.4.1 Slot 3



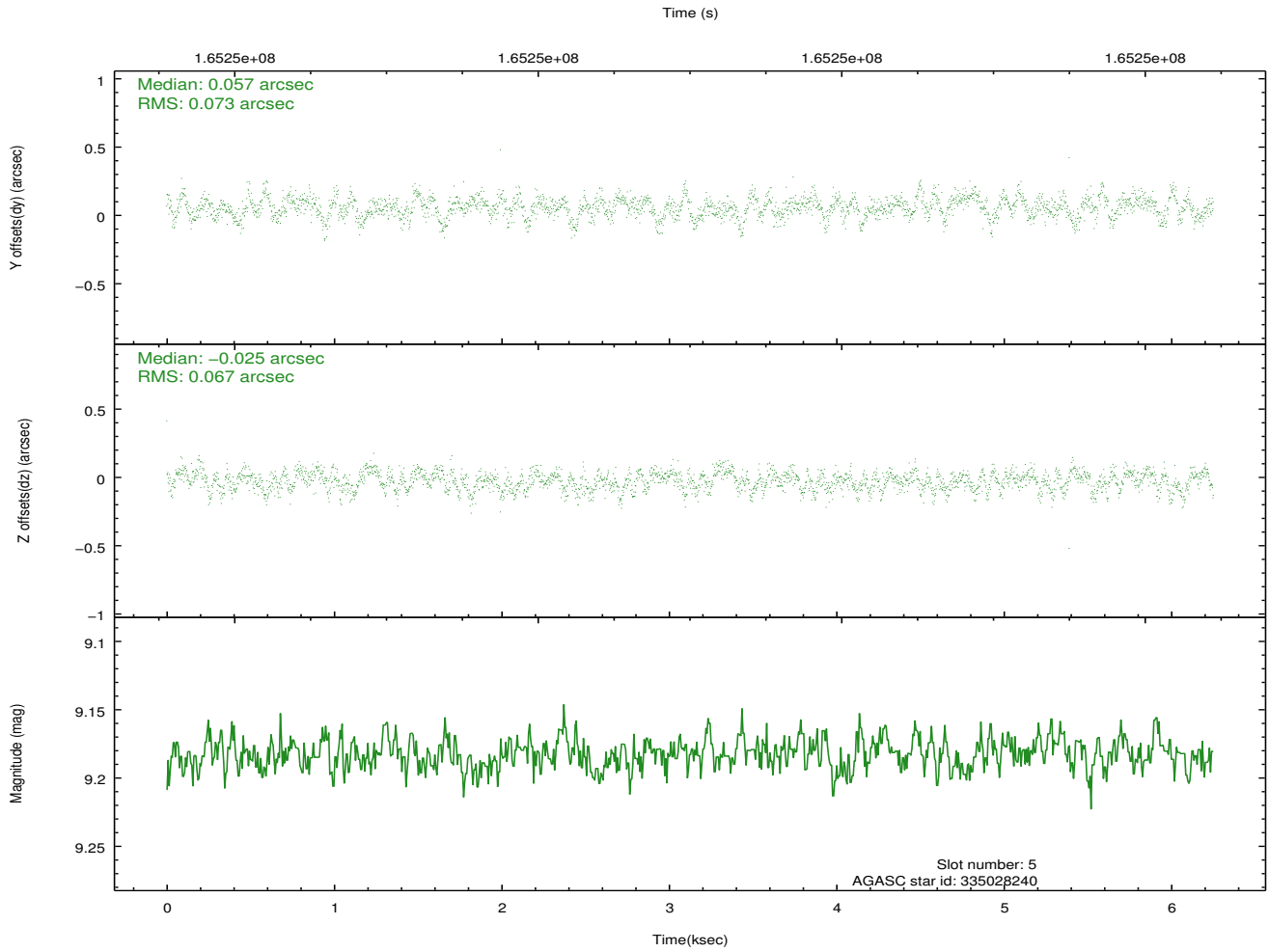
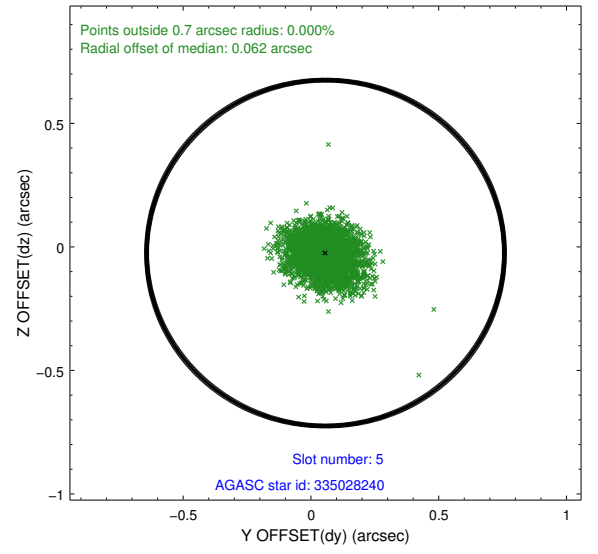
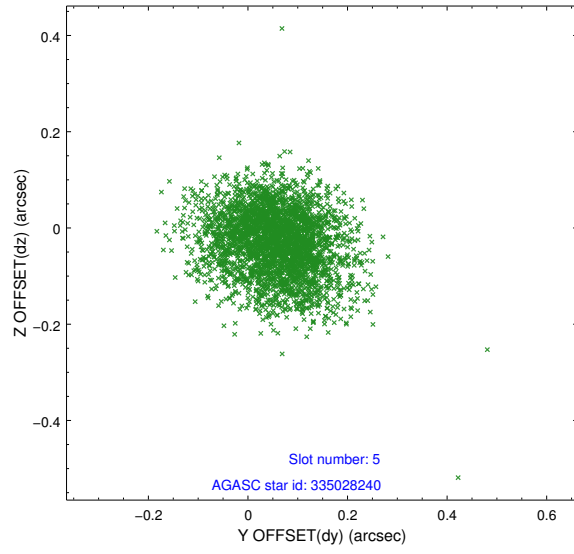
2.4.2 Slot 4



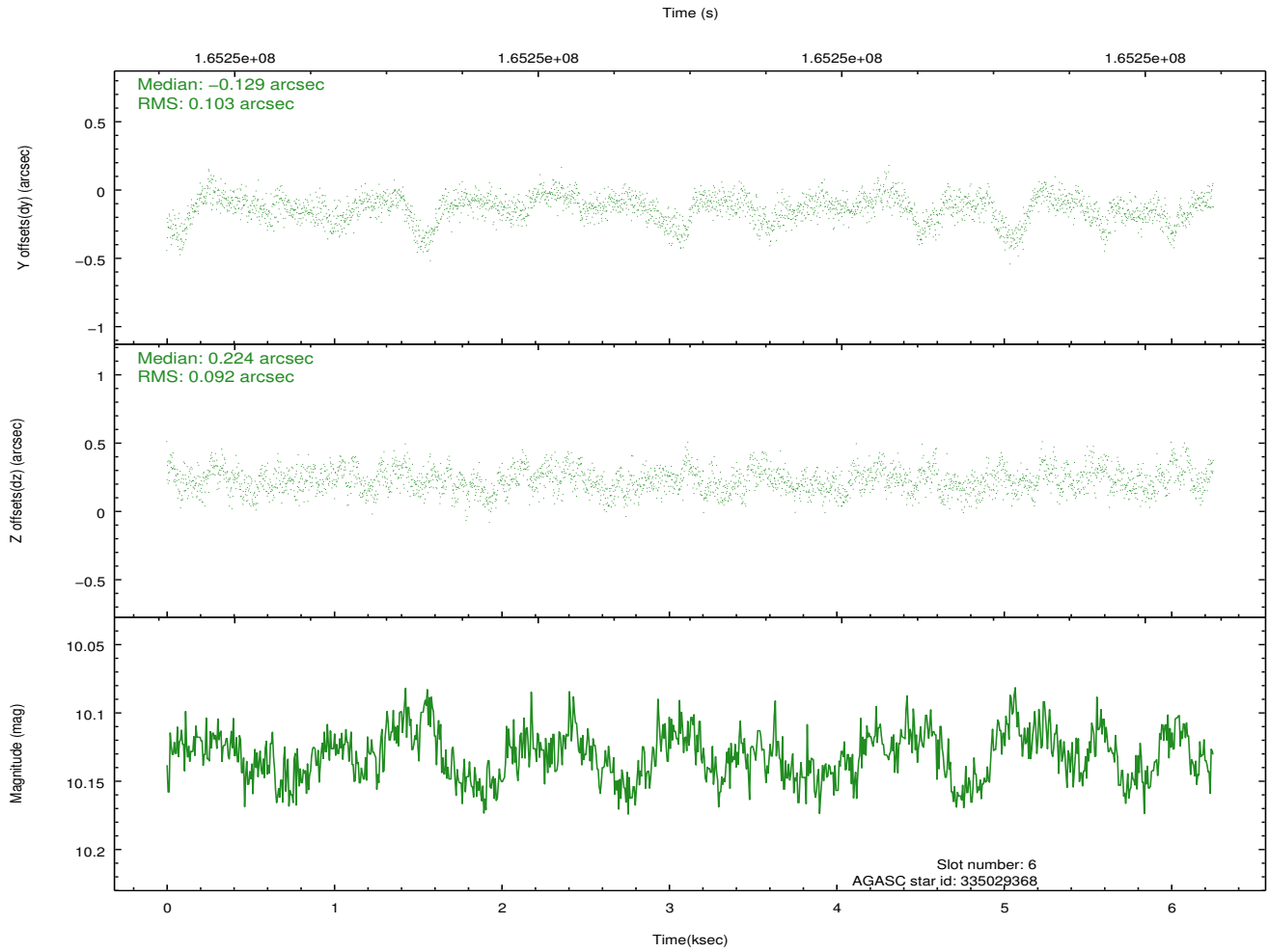
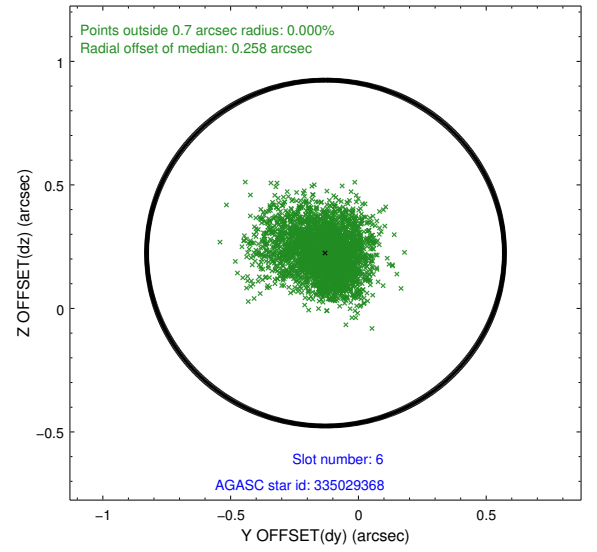
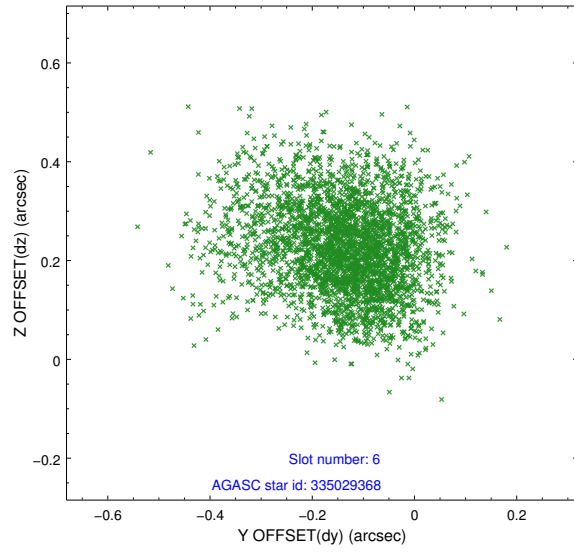
Time (s)



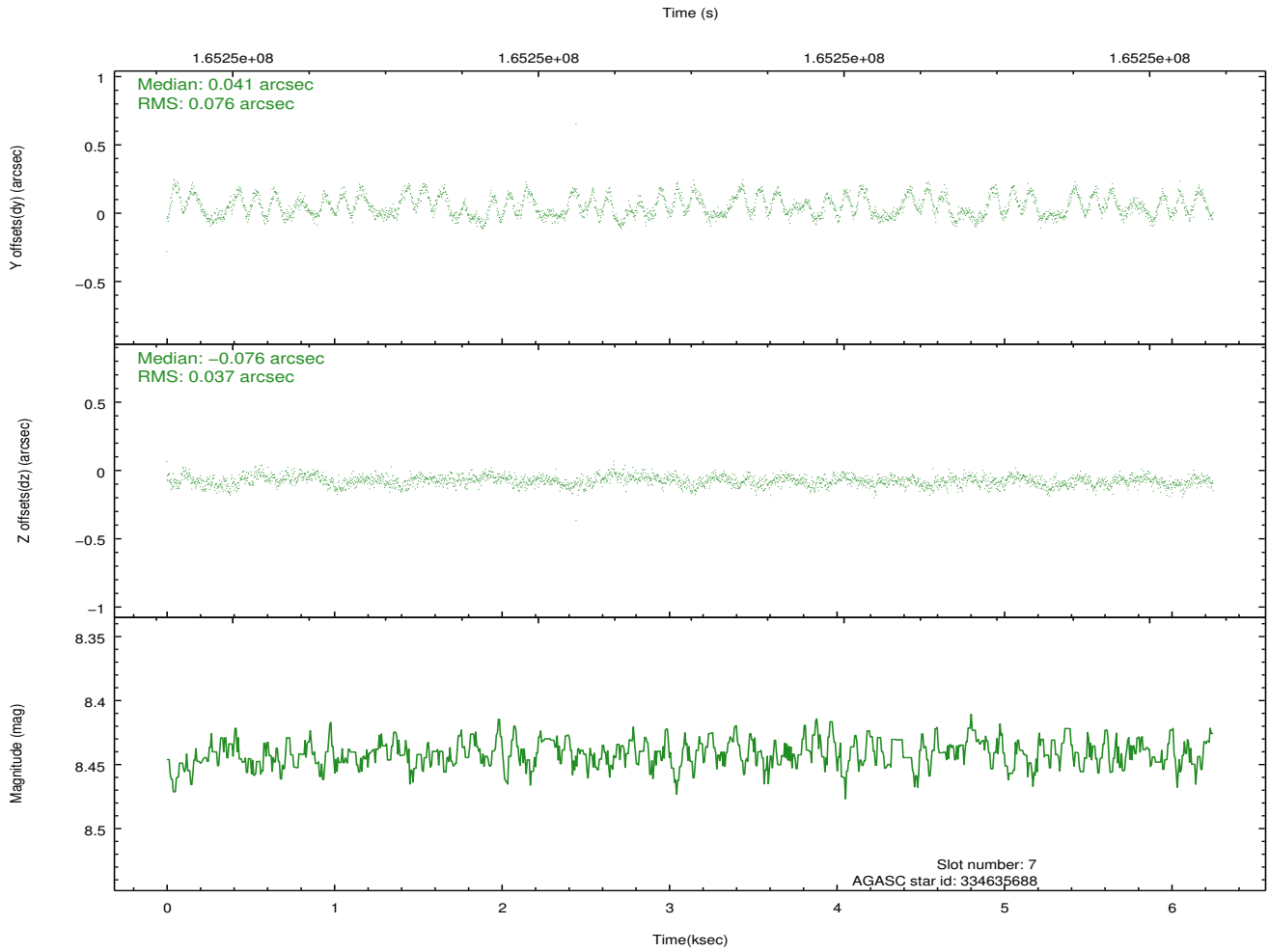
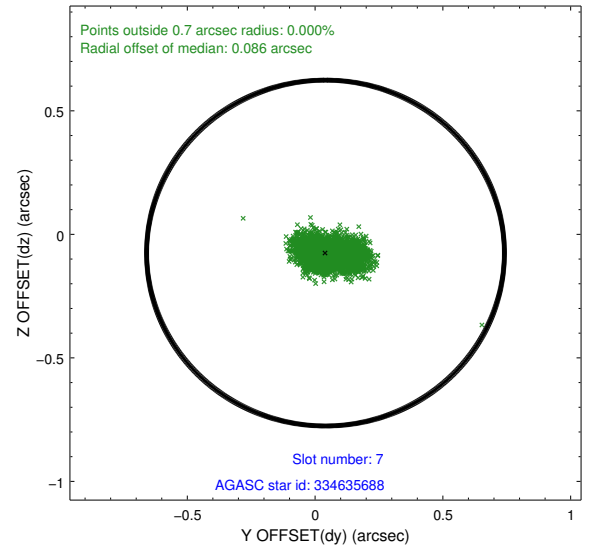
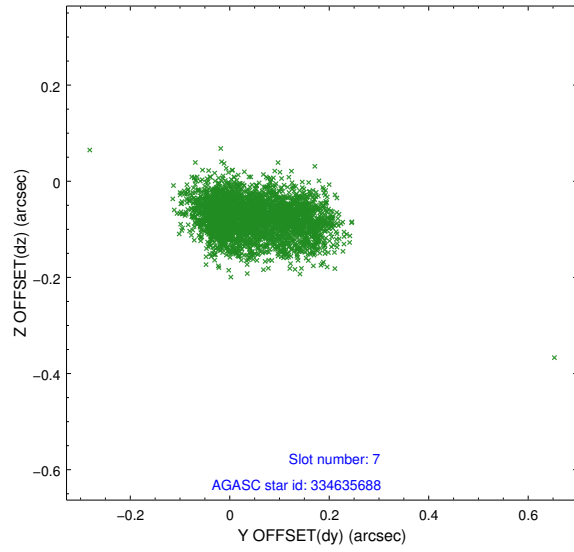
2.4.3 Slot 5



2.4.4 Slot 6

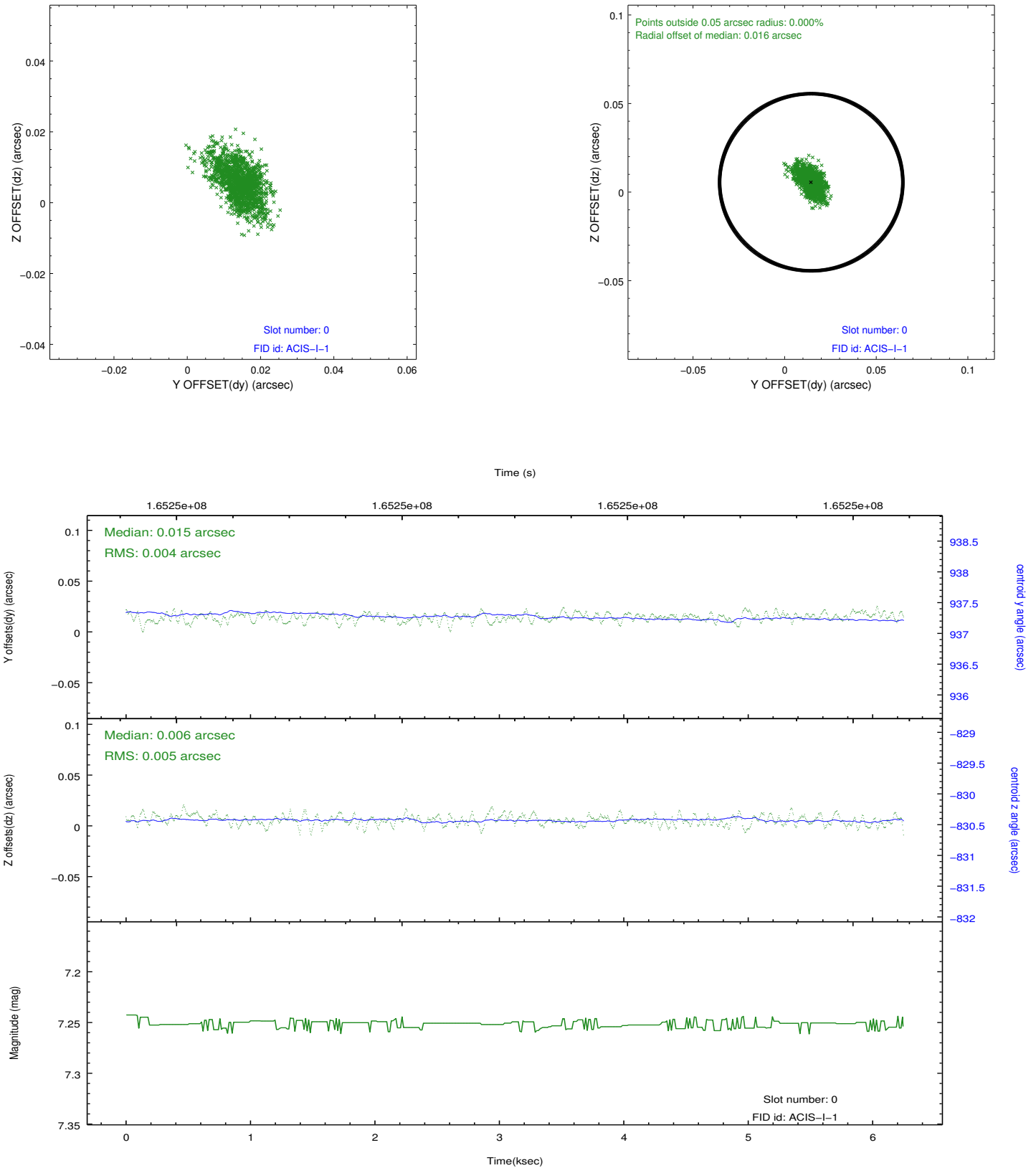


2.4.5 Slot 7

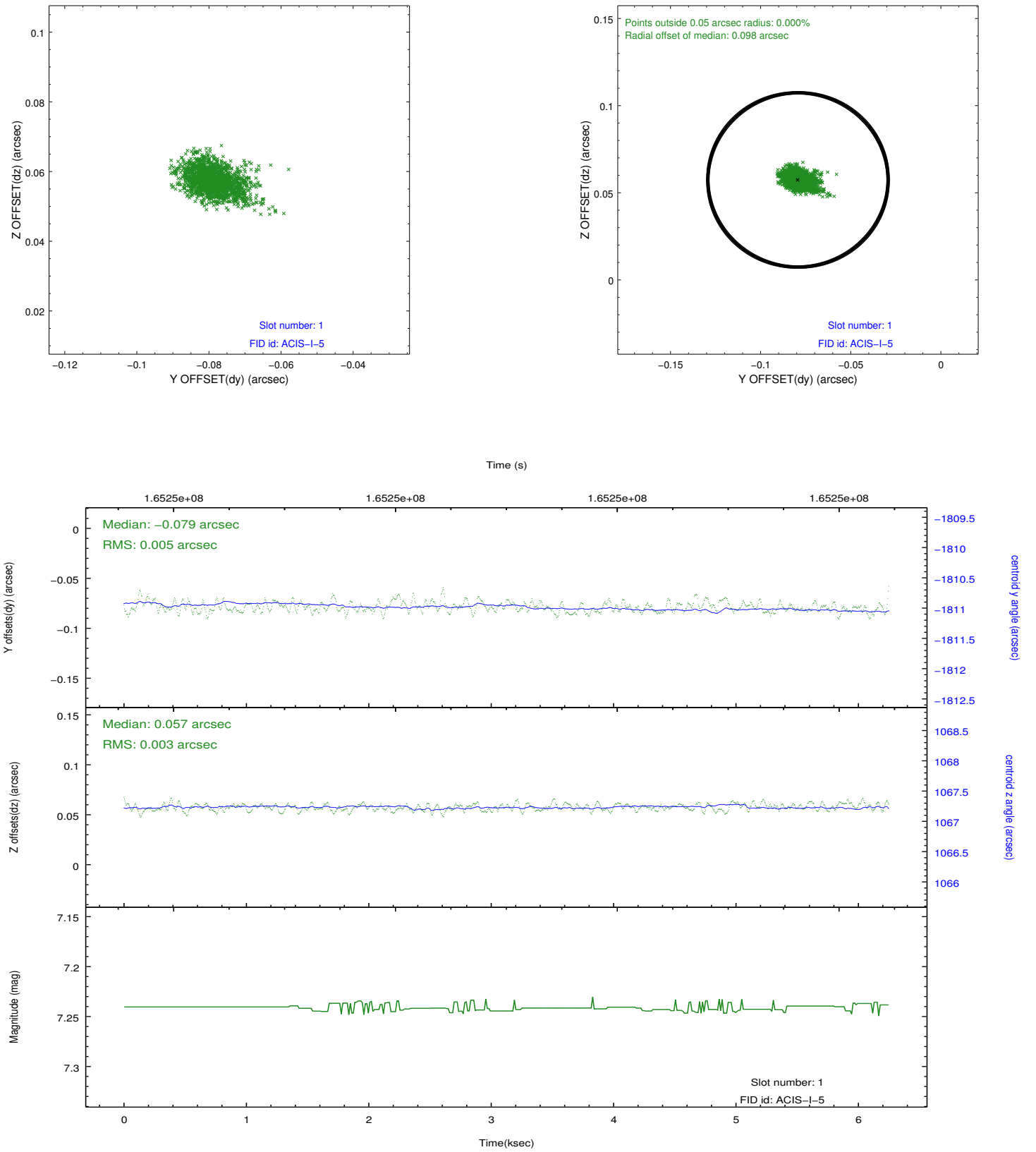


2.5 FID Slots

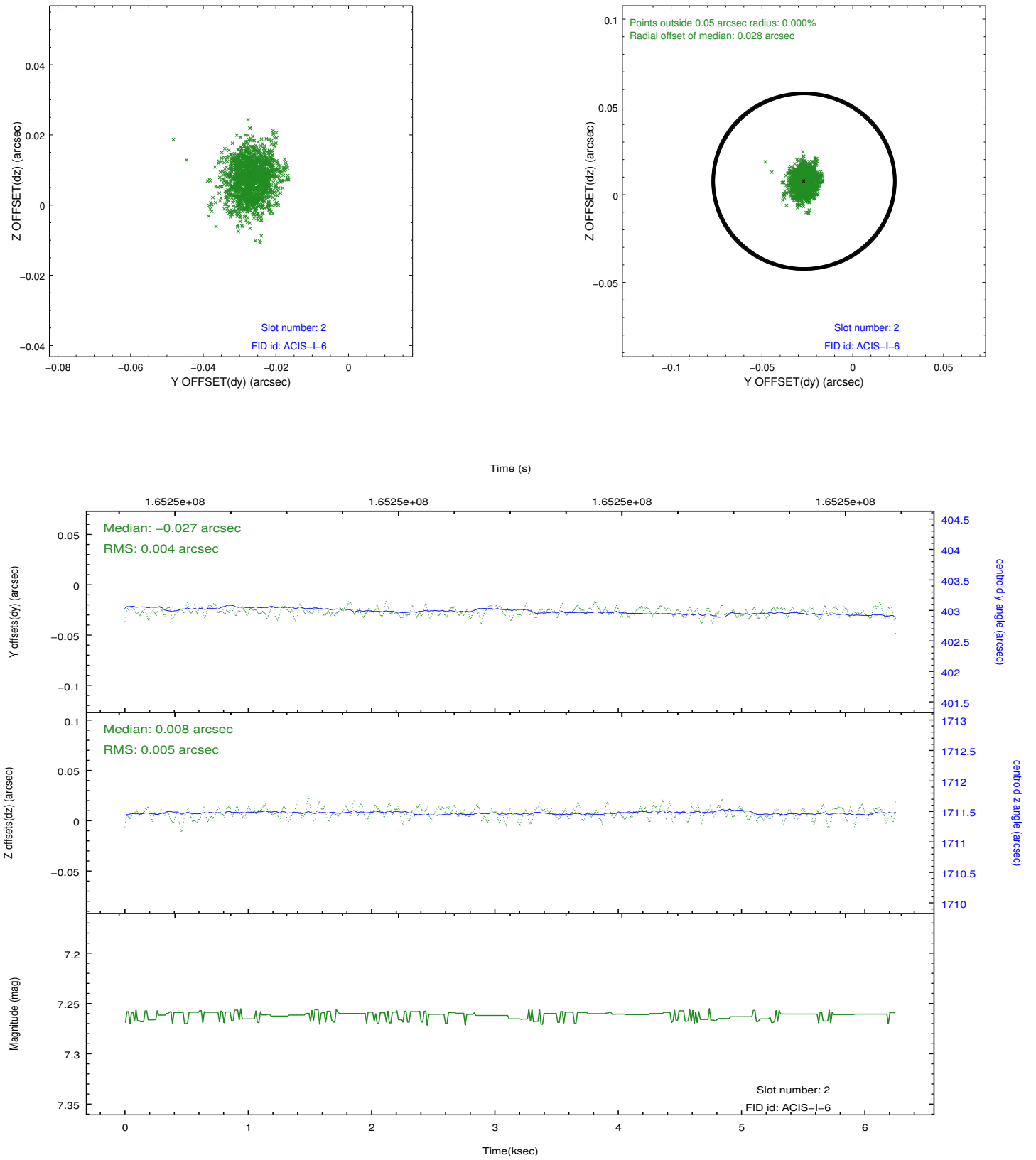
2.5.1 Slot 0



2.5.2 Slot 1



2.5.3 Slot 2



A Summary

A.1 Status

V&V Scientist	Jen Lauer
V&V Date (YYYY-MM-DD)	2012.11.09
V&V Edition	1
V&V Disposition and Status	OK
V&V Charge Time	5.022

A.2 Comments