

V&V Reference Report

L2 ASCDS Version : 8.4.5

Observation 4220 - L2 Version 4
Chandra X-Ray Center

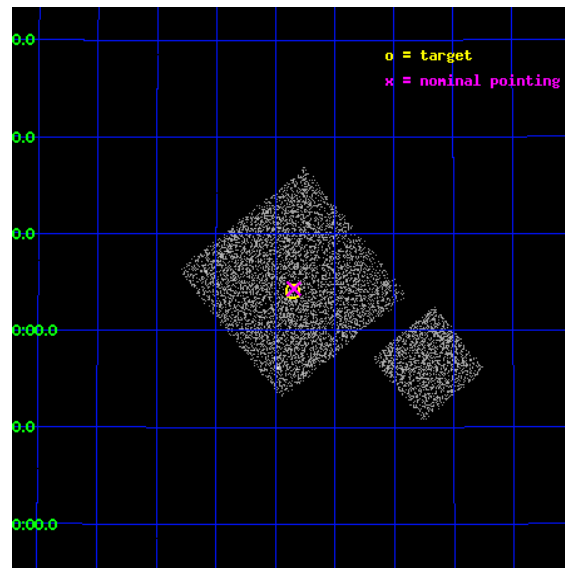
L2 Processing Date : Oct 25 2012

Contents

1	Front	2
2	OBI	3
2.1	OBI	3
2.1.1	Images	3
2.1.2	Bias	3
2.1.3	Parameters	4
2.1.4	Events	4
2.2	Compared Parameters	5
2.3	Aspect	6
2.4	Star Slots	9
2.4.1	Slot 3	9
2.4.2	Slot 4	10
2.4.3	Slot 5	11
2.4.4	Slot 6	12
2.4.5	Slot 7	13
2.5	FID Slots	14
2.5.1	Slot 0	14
2.5.2	Slot 1	15
2.5.3	Slot 2	16
A	Summary	17
A.1	Status	17
A.2	Comments	17

1 Front

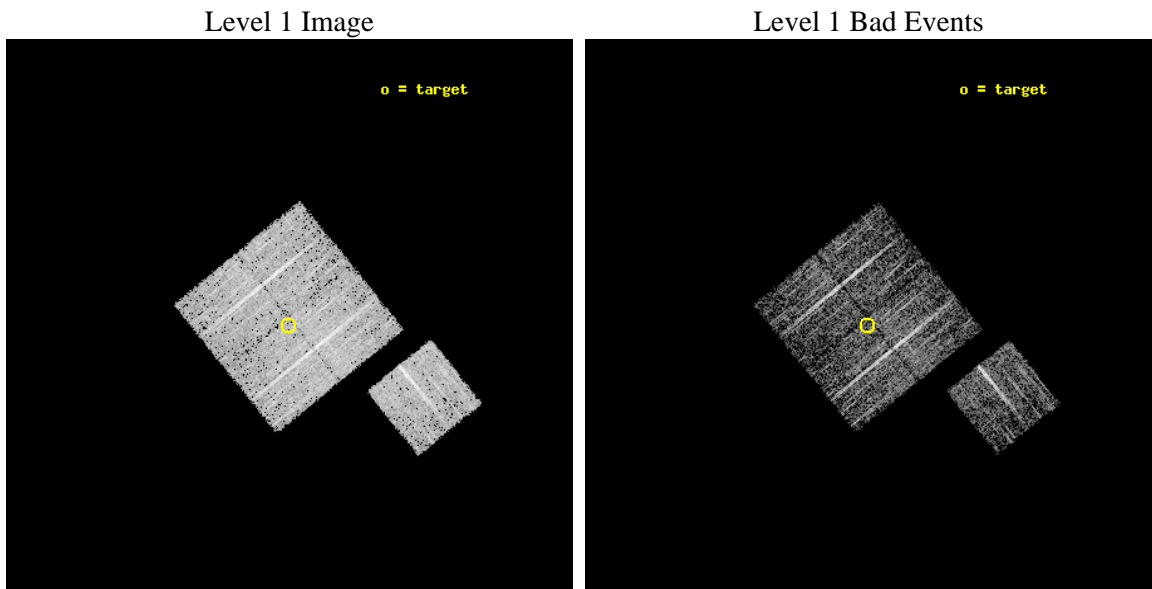
seq_num	900263	Sequence number
obs_id	4220	Observation id
title	A CHANDRA WIDE-FIELD SURVEY TO MAP THE COSMIC WEB AND INVESTIGATE THE EVOLUTION OF NUCLEAR ACCRETION	Proposal title
observer	Dr. Christine Jones	Principal investigator
object	SS23	Source name
dtcycle	0	
cycle	P	events from which exps? Prim/Second/Both
ra_targ	218.463931	Observer's specified target RA [deg]
dec_targ	34.068	Observer's specified target Dec [deg]
ra_nom	218.46128840339	Nominal RA [deg]
dec_nom	34.072020819048	Nominal Dec [deg]
roll_nom	141.01016624637	Nominal Roll [deg]
revision	4	Processing version of data
ontime	4674.0527763665	Sum of GTIs [s]
livetime	4612.9828358556	Livetime [s]
ontime0	4673.9296563566	Sum of GTIs [s]
ontime1	4673.9706963599	Sum of GTIs [s]
ontime2	4674.0117164552	Sum of GTIs [s]
ontime3	4674.0527763665	Sum of GTIs [s]
ontime6	4673.8886163533	Sum of GTIs [s]
l2events	9477	Number of level 2 events



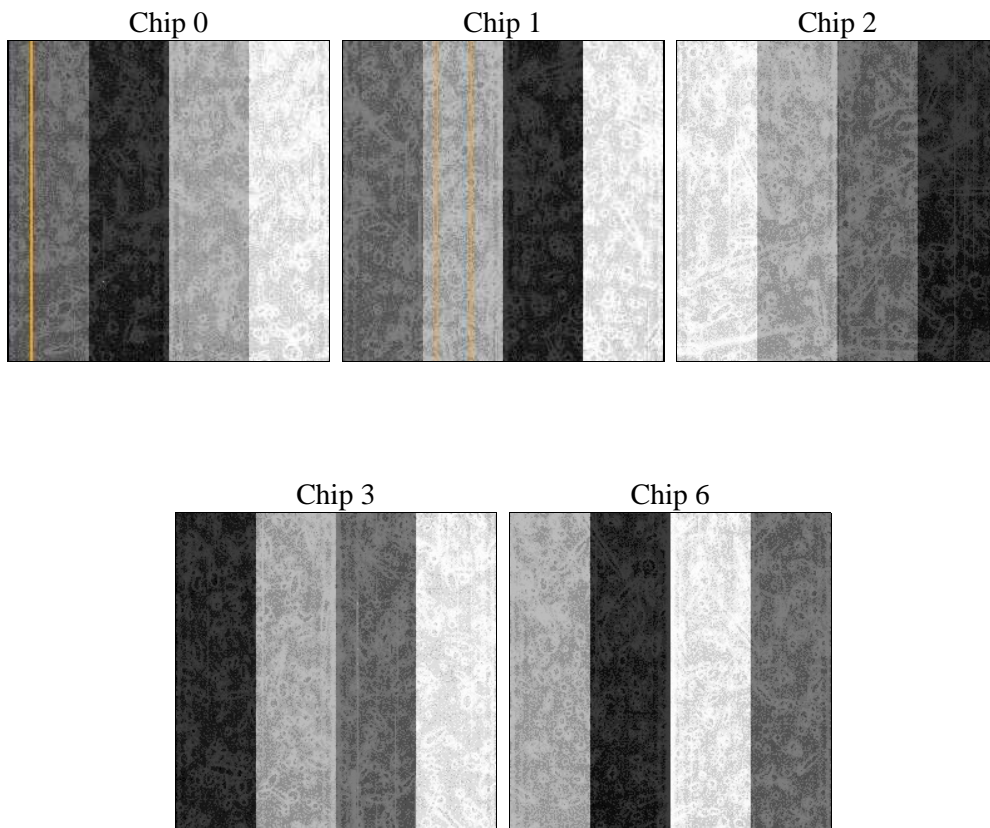
2 OBI

2.1 OBI

2.1.1 Images



2.1.2 Bias



2.1.3 Parameters

obi_num	1	Obi number	sched_exp_time	4900.000000	[s] Scheduled observation exposure time
ascdsver	8.4.5	Processing system revision	ontime	4674.0527763665	Sum of GTIs [s]
caldsver	4.5.2	 	ontime0	4673.9296563566	Sum of GTIs [s]
date	2012-10-25T23:37:34	Date and time of file creation	ontime1	4673.9706963599	Sum of GTIs [s]
revision	4	Processing version of data	ontime2	4674.0117164552	Sum of GTIs [s]
			ontime3	4674.0527763665	Sum of GTIs [s]
			ontime6	4673.8886163533	Sum of GTIs [s]
			l1events	117293	Number of level 1 events

2.1.4 Events

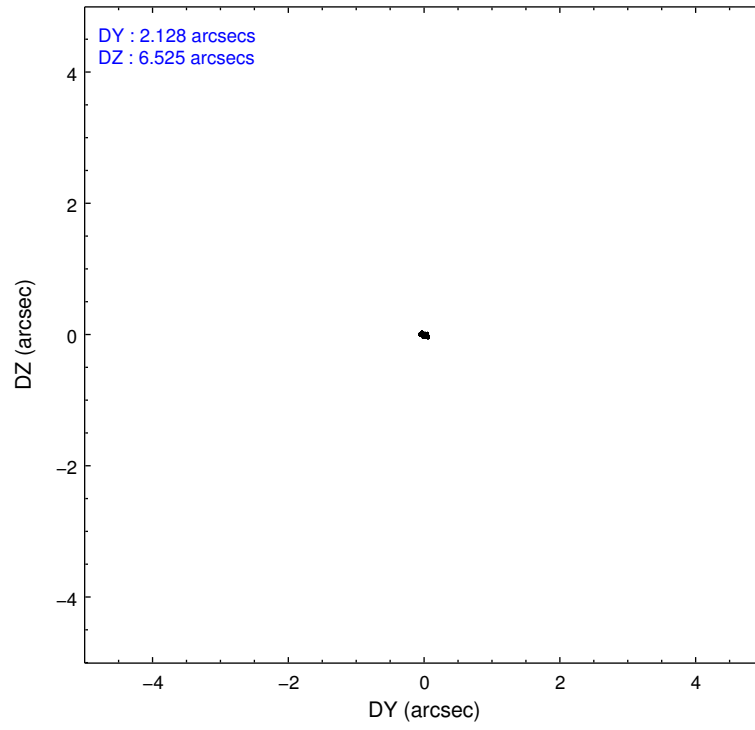
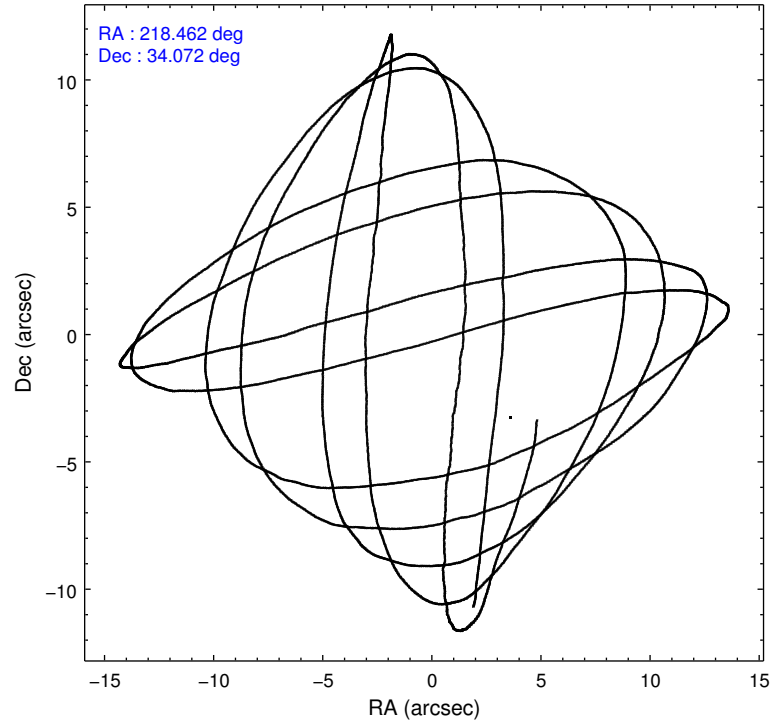
	ccd 0	ccd 1	ccd 2	ccd 3	ccd 6
level 1 events	21864	22138	25772	24404	23115
rejected events	19541	19664	23627	22118	20756
rejected %	89%	88%	91%	90%	89%

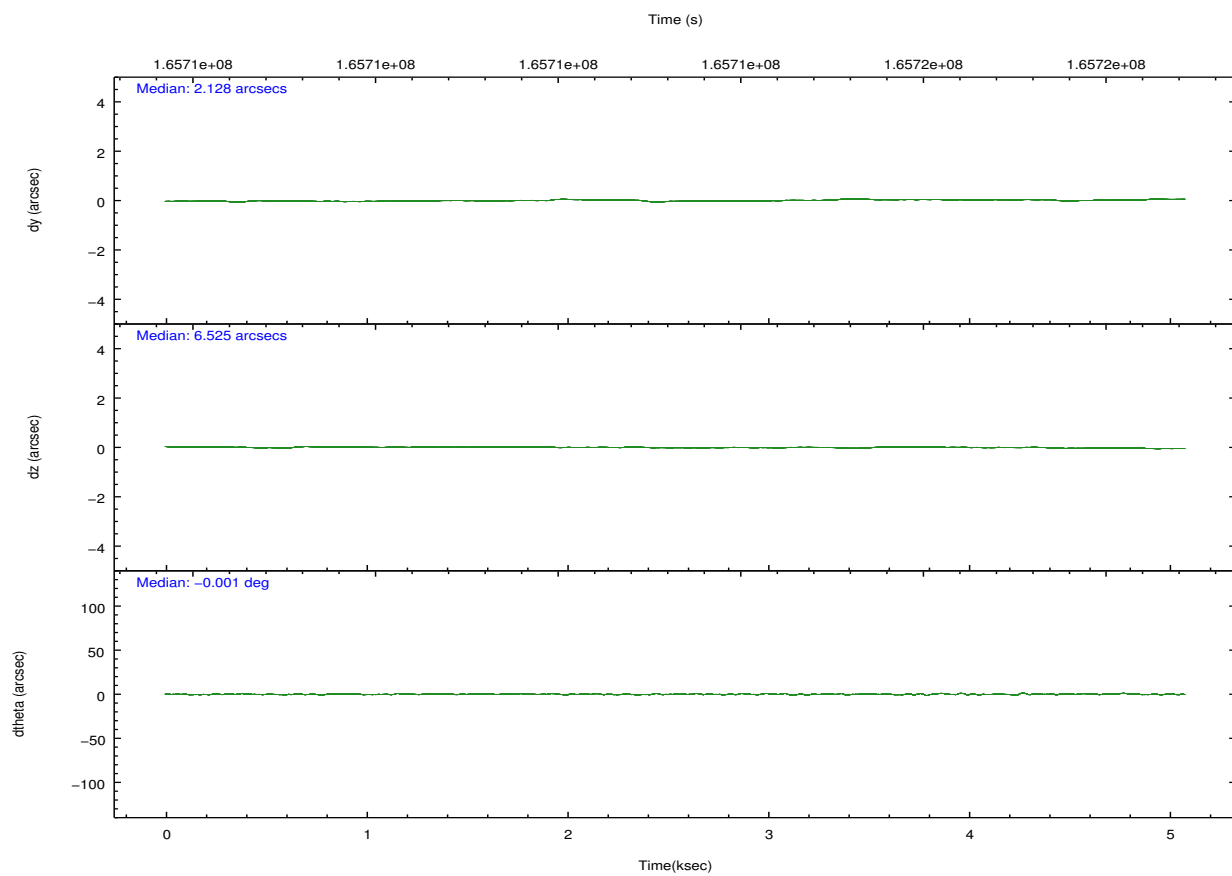
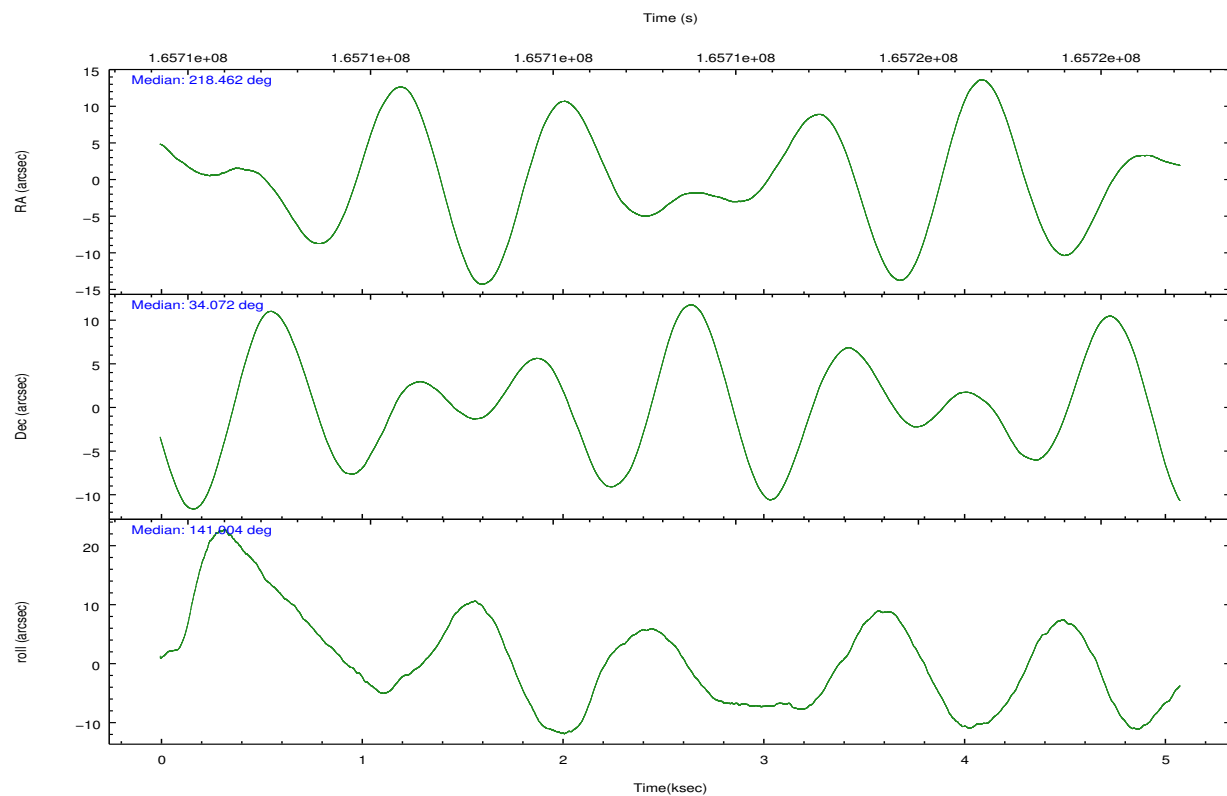
	ccd 0	ccd 1	ccd 2	ccd 3	ccd 6
grade 0 events	862	872	834	934	859
	3%	3%	3%	3%	3%
grade 1 events	15	7	15	6	12
	0%	0%	0%	0%	0%
grade 2 events	508	503	497	492	470
	2%	2%	1%	2%	2%
grade 3 events	279	341	226	242	299
	1%	1%	0%	0%	1%
grade 4 events	253	313	221	250	291
	1%	1%	0%	1%	1%
grade 5 events	688	770	700	749	707
	3%	3%	2%	3%	3%
grade 6 events	424	447	368	373	443
	1%	2%	1%	1%	1%
grade 7 events	18835	18885	22911	21358	20034
	86%	85%	88%	87%	86%

2.2 Compared Parameters

Parameter	Planned	Actual	Parameter	Planned	Actual
Instrument	ACIS	ACIS	Obspar format version number	7	7
Detector	ACIS-01236	ACIS-01236	Obspar file type	PREDICTED	ACTUAL
Grating	NONE	NONE	Obspar update status	NONE	UPDATED
Data mode	VFAINT	VFAINT	Number of optional ACIS chips dropped	0	0
Observation mode	POINTING	POINTING	On-chip summing requested	N	N
[deg] Pointing RA	218.493967	218.4612884033921	Subarray requested	NONE	NONE
[deg] Pointing Dec	34.067919	34.07202081904754	Alternating exposures requested	N	N
[deg] Pointing Roll	140.783169	141.0101662463737	[s] Primary exposure time	0.000000	3.1
[mm] SIM focus pos	-0.782348	-0.7809083437167272			
[mm] SIM defocus	0	0.001439871863259334			
[mm] SIM translation stage pos	-233.592463	-233.5874344608287			
[mm] SIM translation stage offset	0	-0.005018542100998502			
[s] Observation start time (MET)	165711277.184000	165710901.28845			
Observation start date	2003-04-02T22:53:33	2003-04-02T22:48:21			
[s] Observation end time (MET)	165716177.184000	165716311.23868			
Observation end date	2003-04-03T00:15:13	2003-04-03T00:18:31			
Read mode	TIMED	TIMED			

2.3 Aspect



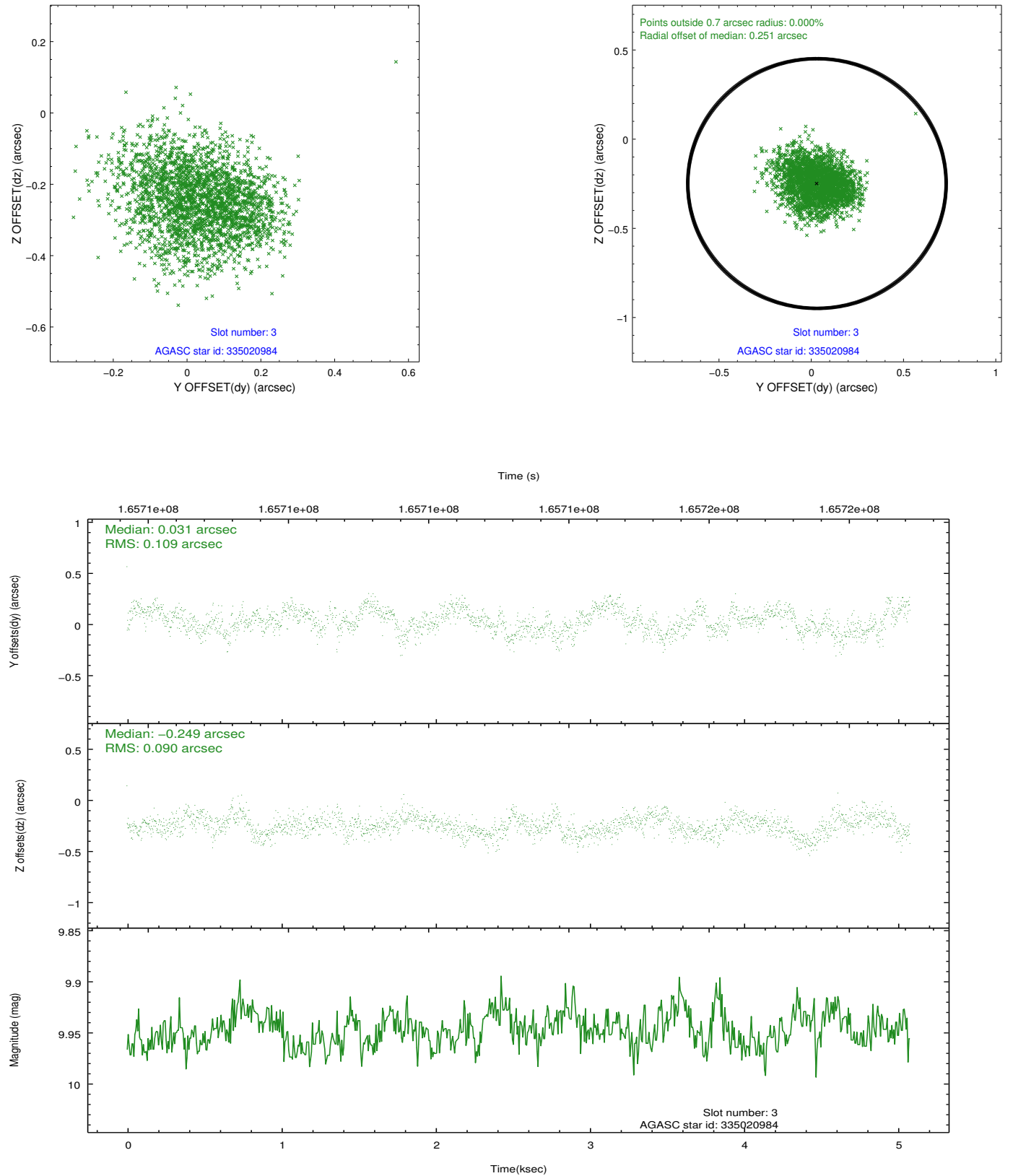


Slot Statistics

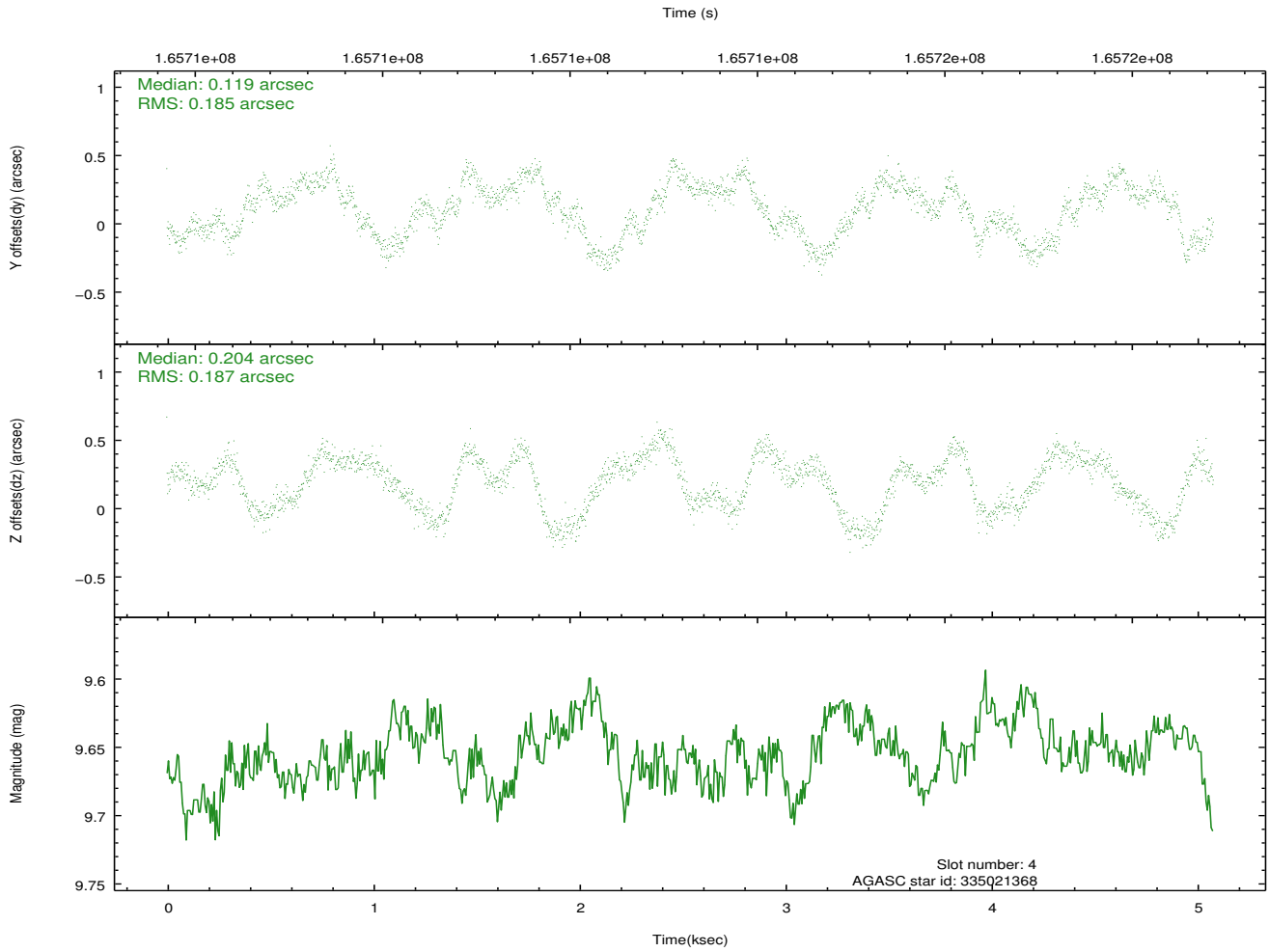
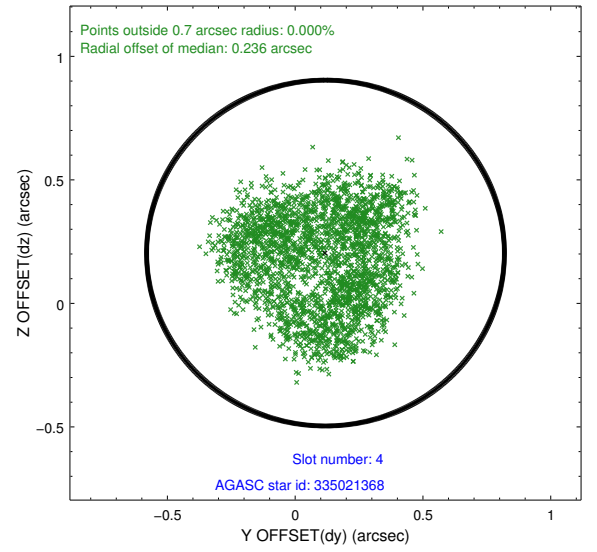
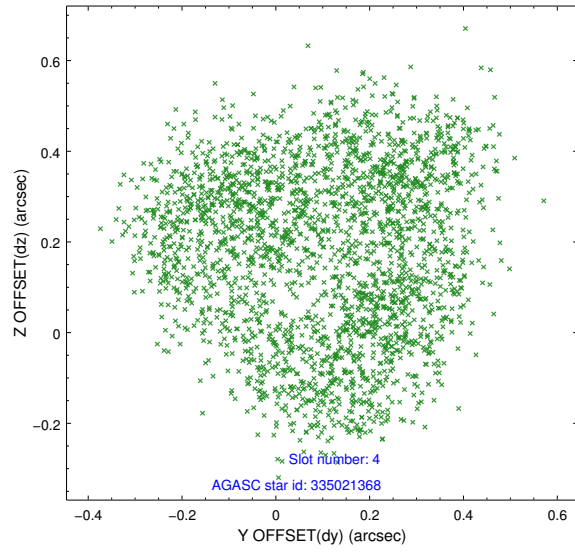
slot	status	id	mag	n_pts	med_dy	med_dz	dr1	dr2	ra	dec	mean_y	mean_z
0	FID	ACIS-I-1	7.25	1239	0.005	0.000	0.006	0.011	0.000000	0.000000	937.67	-829.92
1	FID	ACIS-I-5	7.24	1240	-0.069	0.049	0.006	0.009	0.000000	0.000000	-1809.80	1067.08
2	FID	ACIS-I-6	7.26	1240	-0.028	0.021	0.007	0.011	0.000000	0.000000	401.94	1712.86
3	GUIDE	335020984	9.95	2456	0.031	-0.249	0.152	0.239	218.841668	33.815112	-1379.05	45.59
4	GUIDE	335021368	9.65	2476	0.119	0.204	0.294	0.402	217.529643	33.934817	1937.01	2182.17
5	GUIDE	335025040	9.91	2478	0.003	0.067	0.126	0.211	218.601670	34.305240	293.55	-863.64
6	GUIDE	335026200	10.67	2454	0.044	-0.136	0.220	0.392	218.096425	34.160577	1130.42	488.11
7	GUIDE	335023304	8.41	2477	-0.159	0.135	0.109	0.165	218.883608	34.686545	516.94	-2456.09

2.4 Star Slots

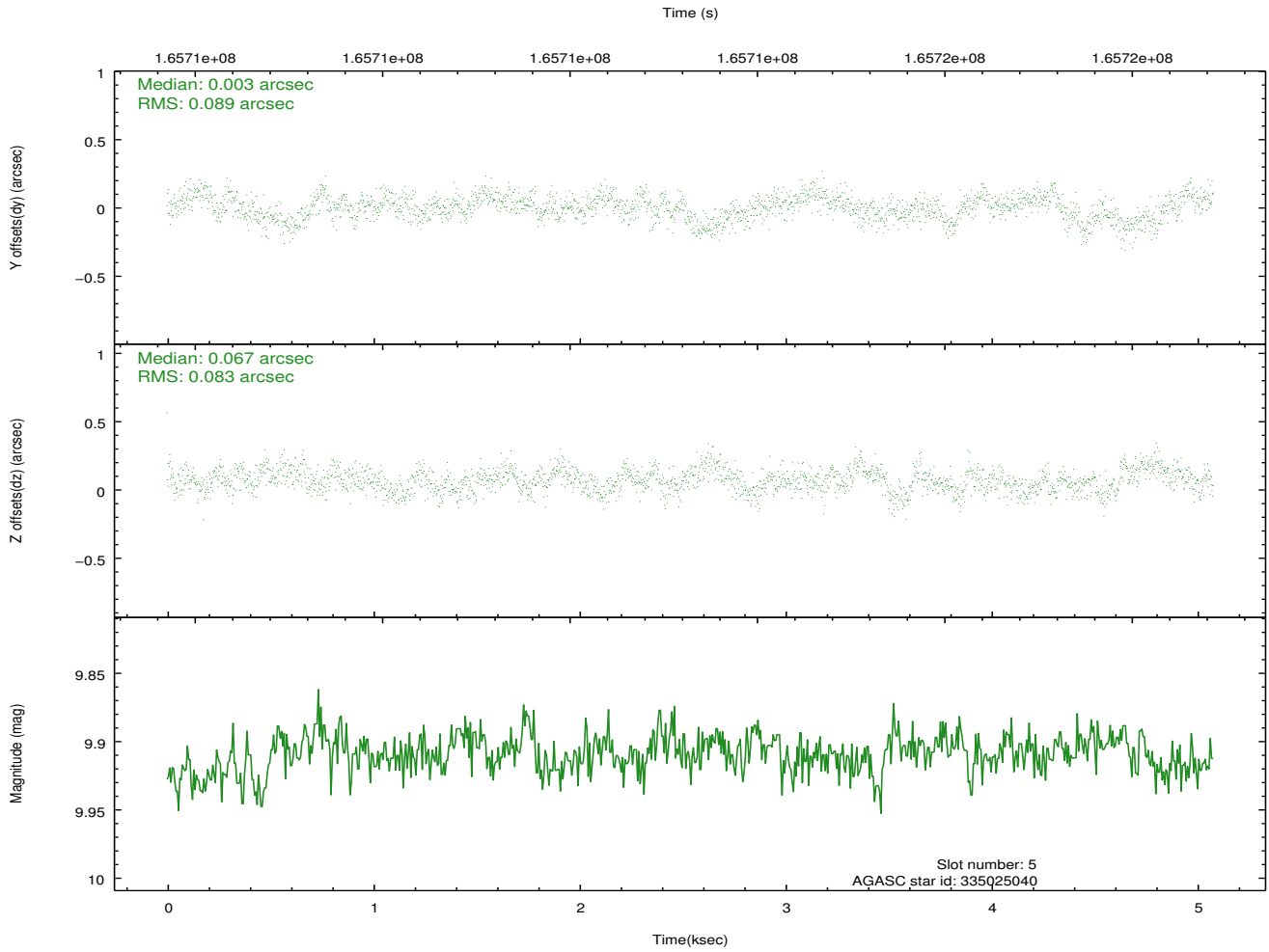
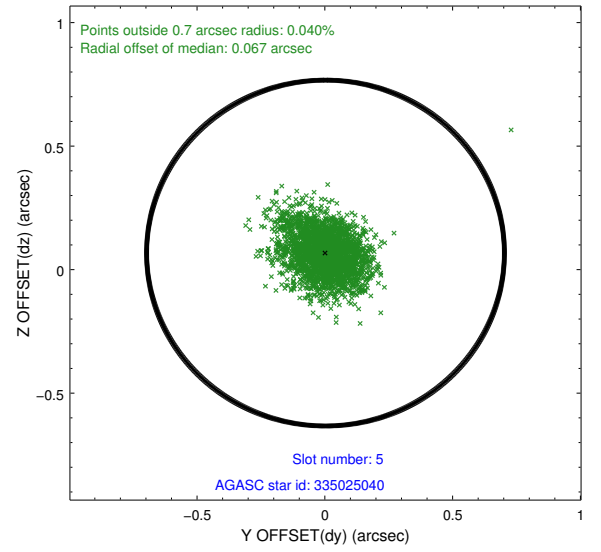
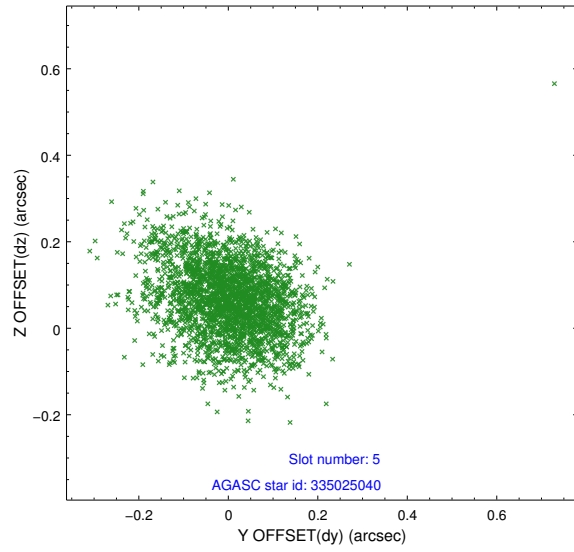
2.4.1 Slot 3



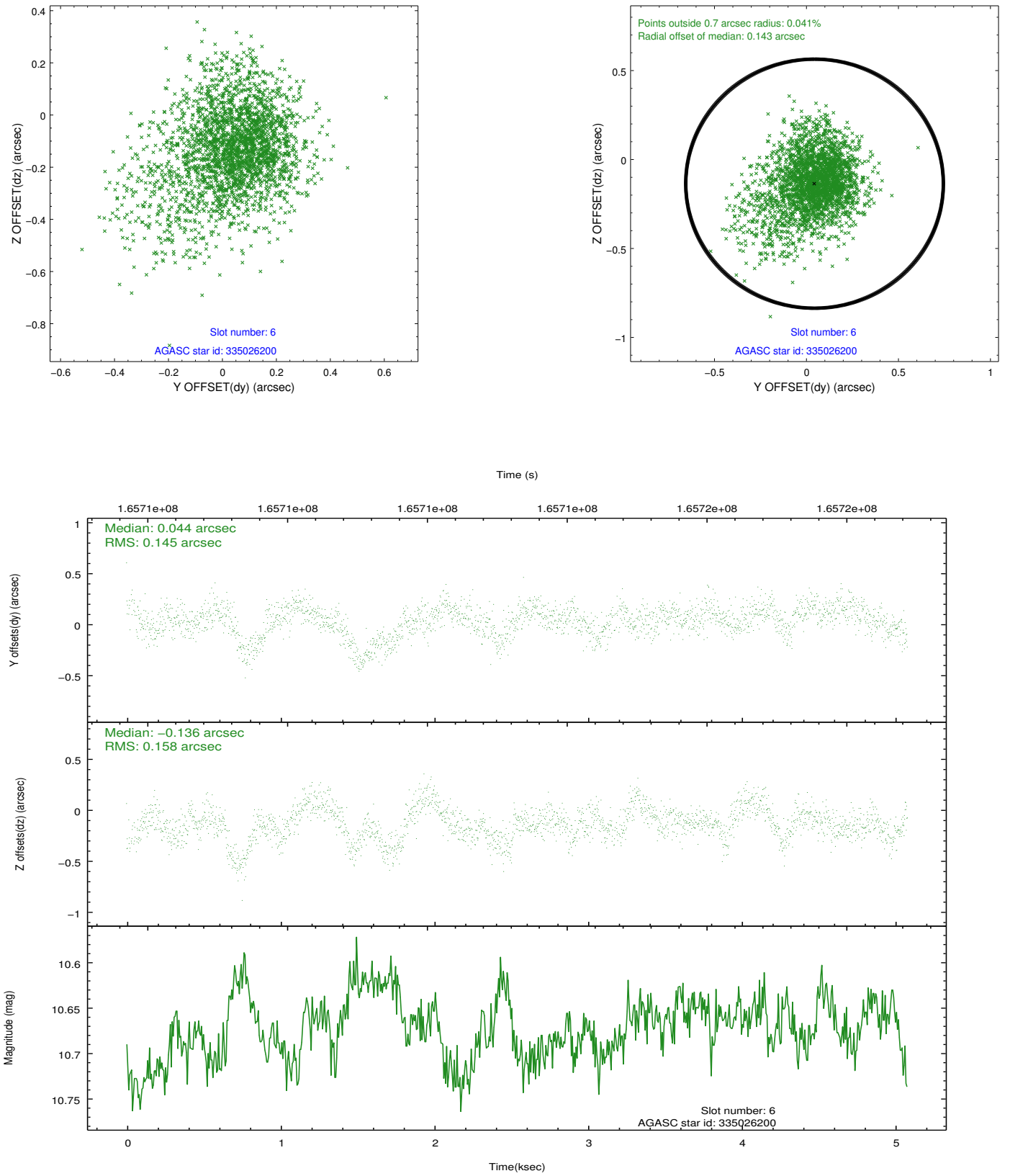
2.4.2 Slot 4



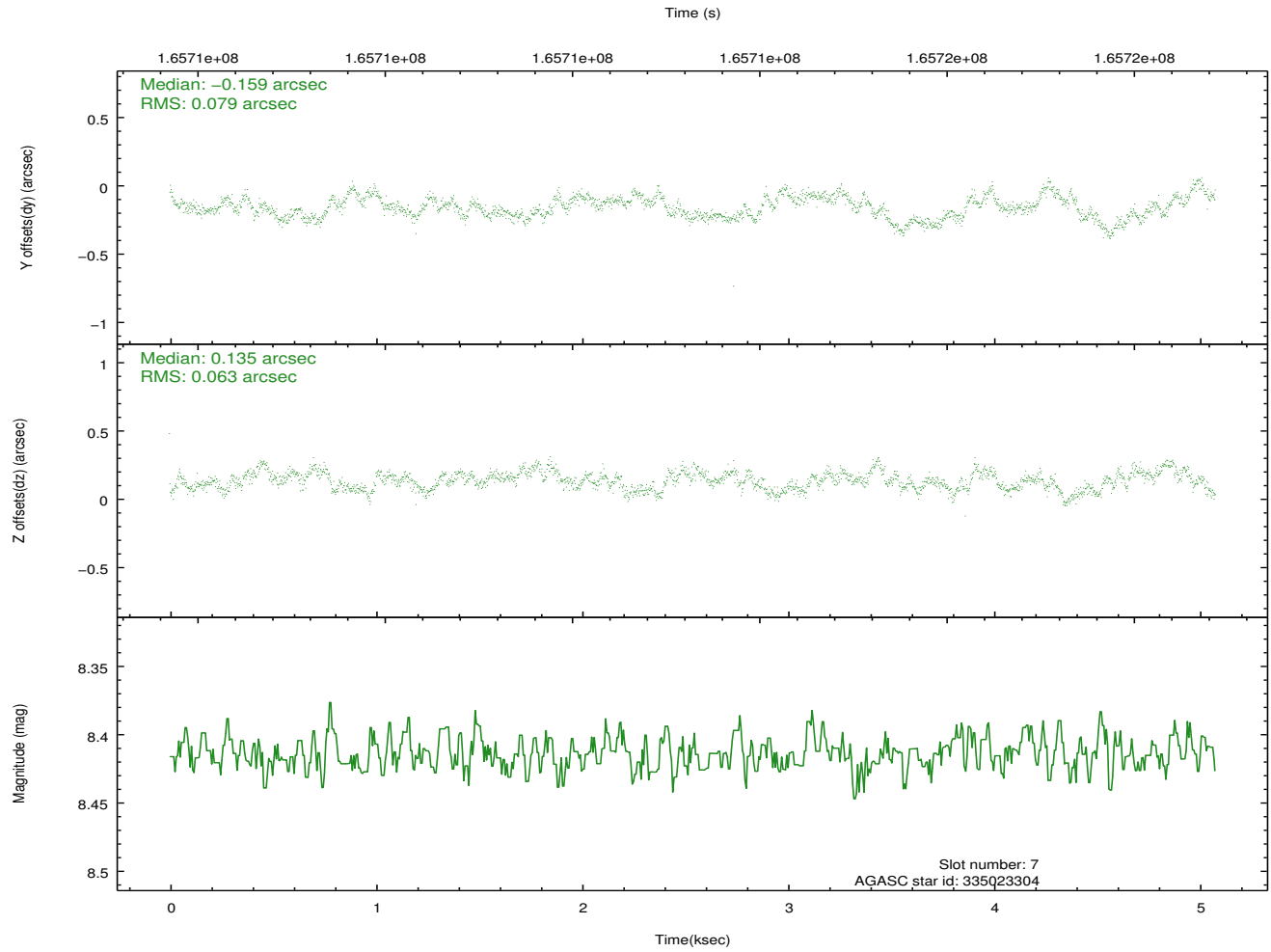
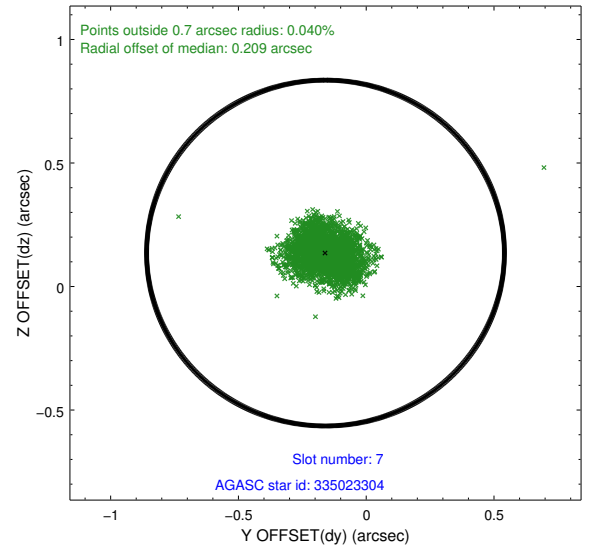
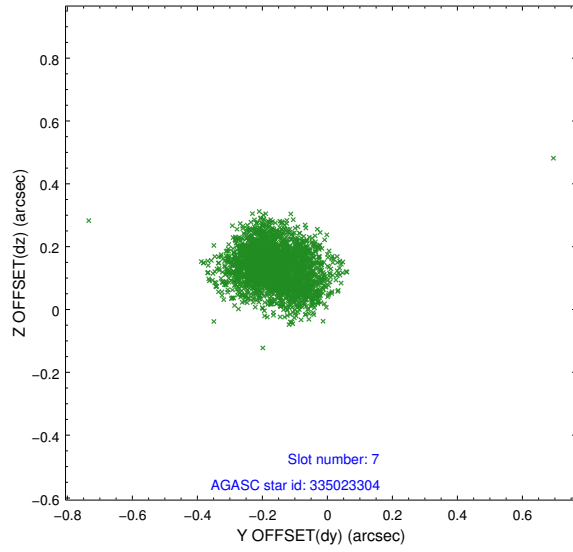
2.4.3 Slot 5



2.4.4 Slot 6

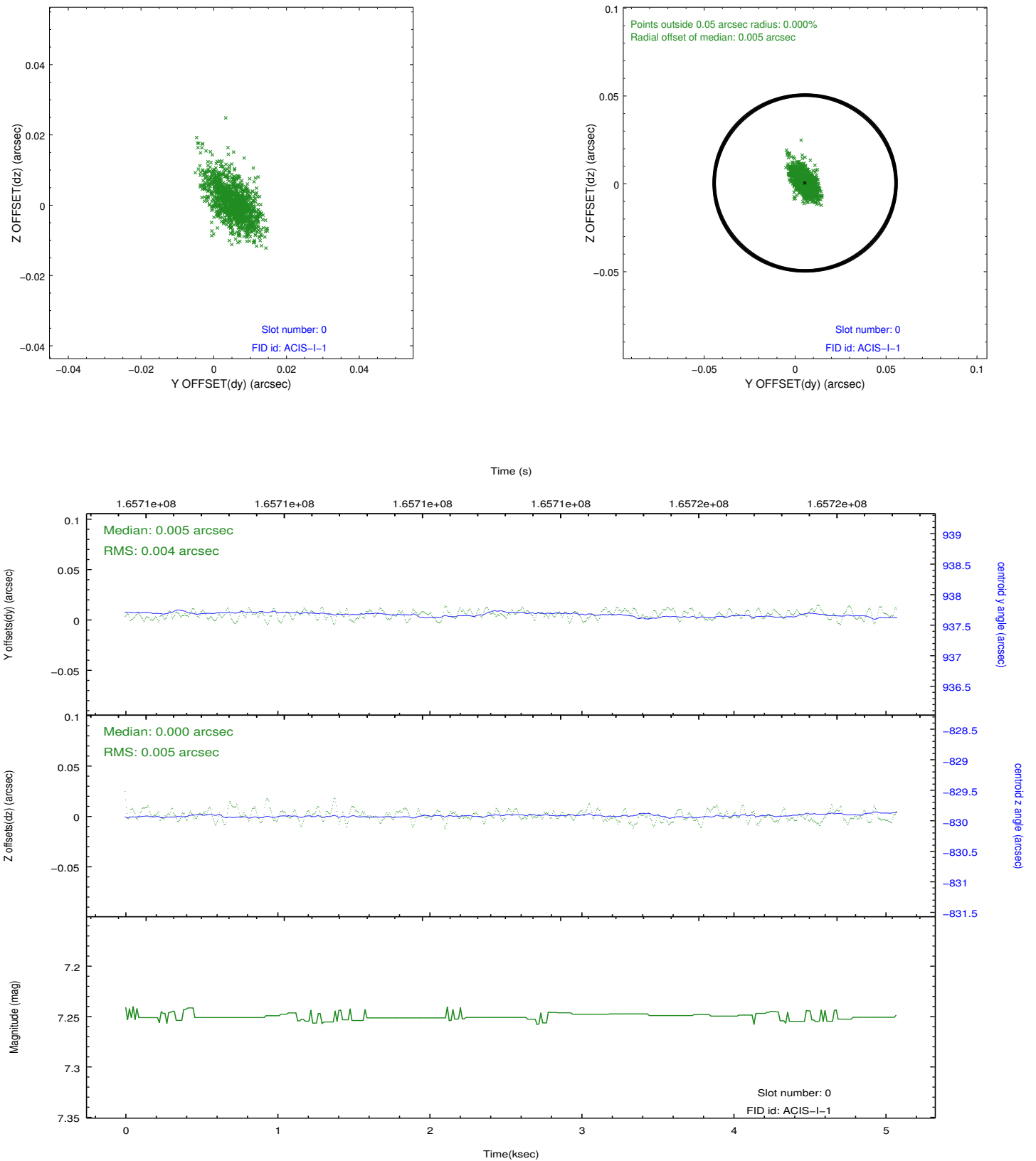


2.4.5 Slot 7

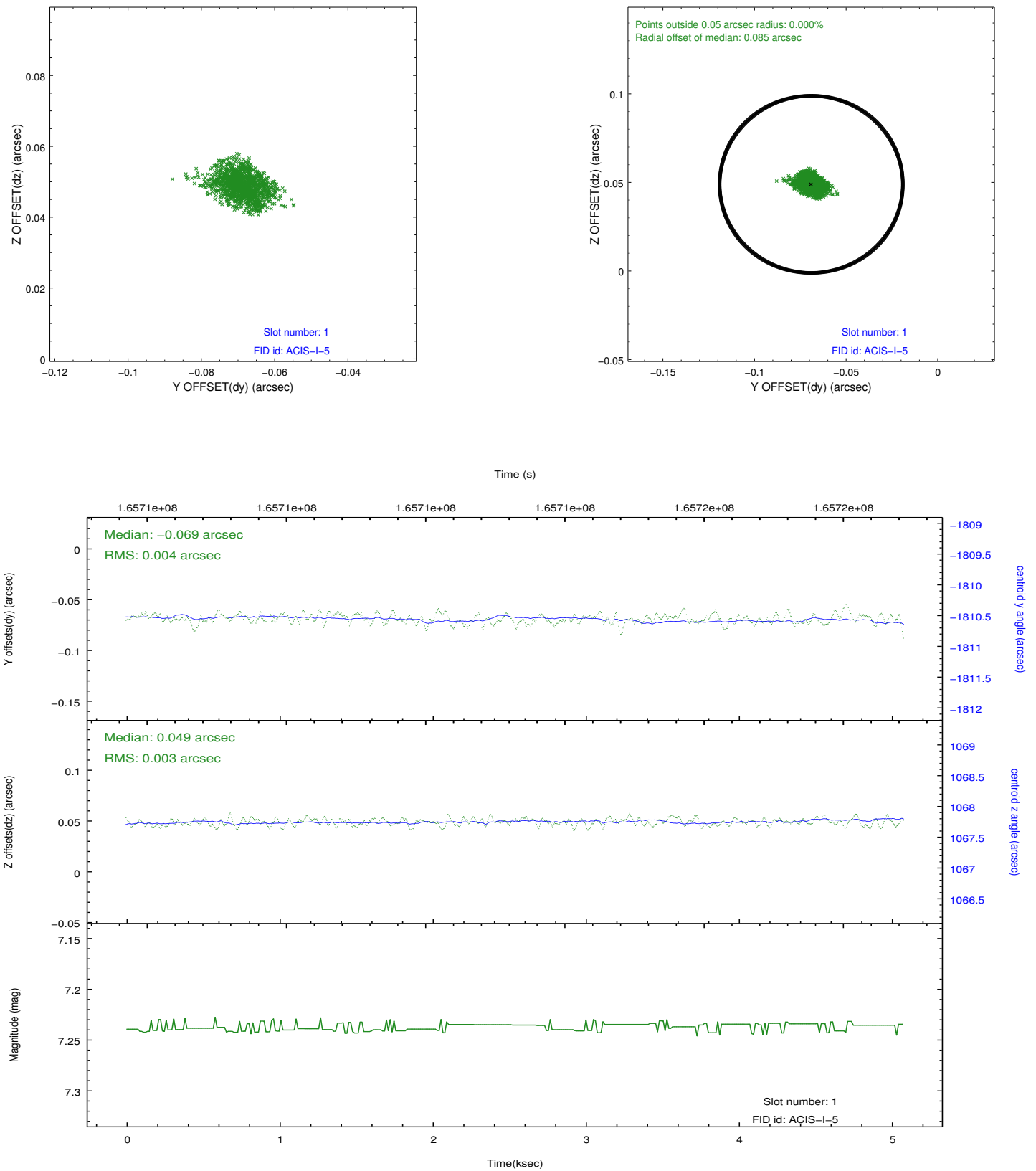


2.5 FID Slots

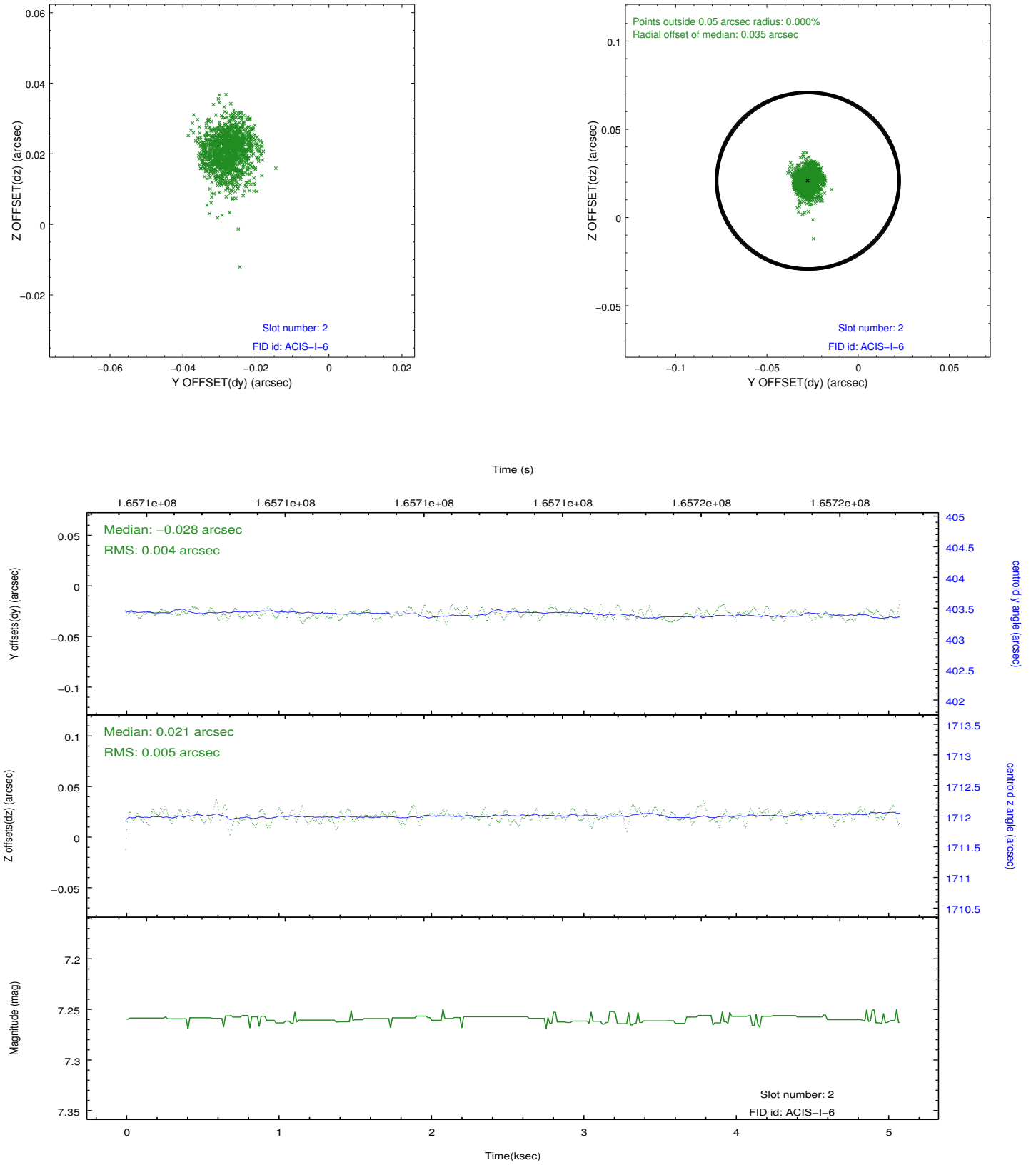
2.5.1 Slot 0



2.5.2 Slot 1



2.5.3 Slot 2



A Summary

A.1 Status

V&V Scientist	Jen Lauer
V&V Date (YYYY-MM-DD)	2012.11.13
V&V Edition	1
V&V Disposition and Status	OK
V&V Charge Time	4.675

A.2 Comments