

V&V Reference Report

L2 ASCDS Version : 7.6.8

Observation 3880 - L2 Version 001
Chandra X-Ray Center

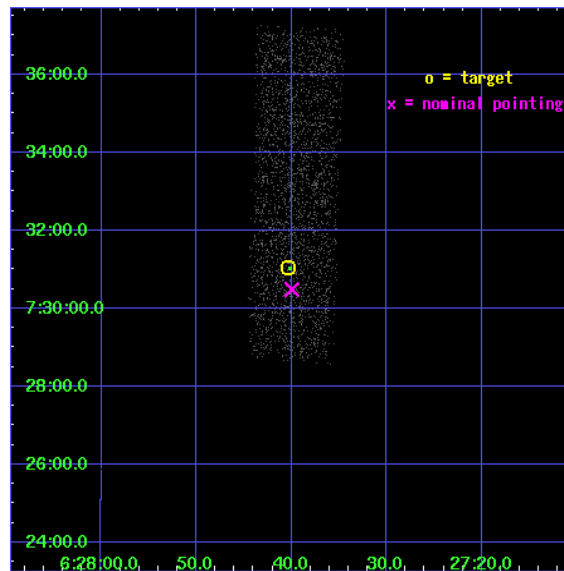
L2 Processing Date : Jul 22 2006

Contents

1	Front	2
2	OBI	3
2.1	OBI	3
2.1.1	Images	3
2.1.2	Bias	3
2.1.3	Parameters	4
2.1.4	Events	4
2.2	Compared Parameters	5
2.3	Aspect	6
2.4	Star Slots	9
2.4.1	Slot 3	9
2.4.2	Slot 4	10
2.4.3	Slot 5	11
2.4.4	Slot 6	12
2.4.5	Slot 7	13
2.5	FID Slots	14
2.5.1	Slot 0	14
2.5.2	Slot 1	15
2.5.3	Slot 2	16
3	Point Sources	17
A	Summary	18
A.1	Status	18
A.2	Comments	18

1 Front

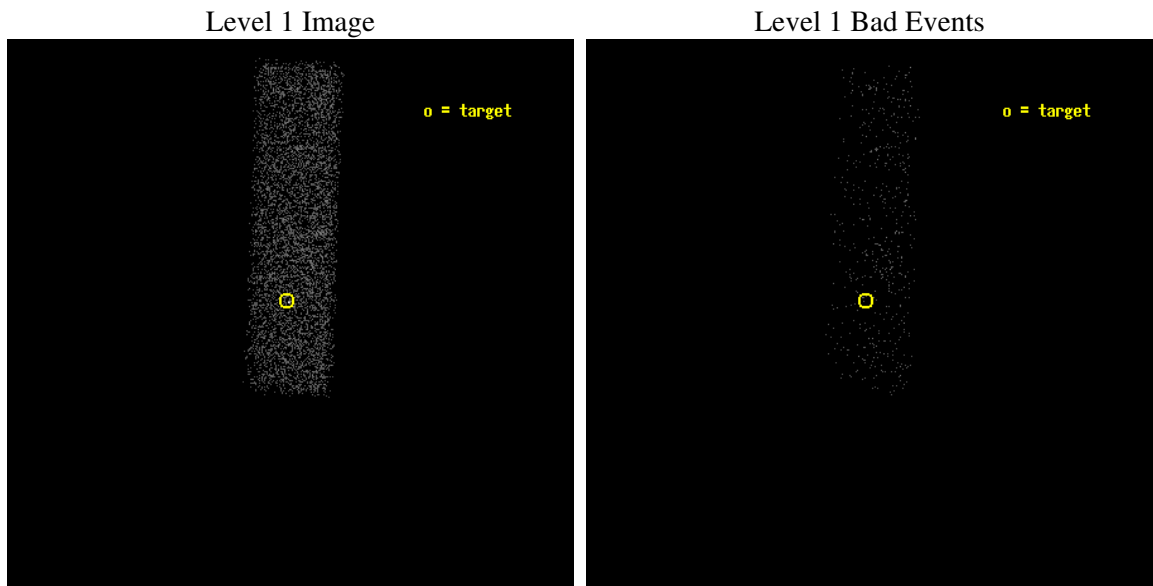
seq_num	500359
obs_id	3880
title	COMPLETING THE CENSUS OF COMPACT OBJECTS IN SUPERNOVA REMNANTS
observer	Dr David Kaplan
object	RX J062740.3+073103
dtcycle	0
cycle	P
ra_targ	96.917917
dec_targ	7.5175
ra_nom	96.916543340078
dec_nom	7.5080888181503
roll_nom	272.02490466709
revision	3
ontime	3378.4000503421
livetime	3213.5451824808
ontime7	3378.4000503421
l2events	3017



2 OBI

2.1 OBI

2.1.1 Images



2.1.2 Bias

Chip 7



2.1.3 Parameters

obi_num	0
ascdsver	7.6.8
caldbver	3.2.2
date	2006-07-22T20:12:01
revision	3

sched_exp_time	3000.000000
ontime	3830.8902613819
ontime7	3830.8902613819
l1events	8135

2.1.4 Events

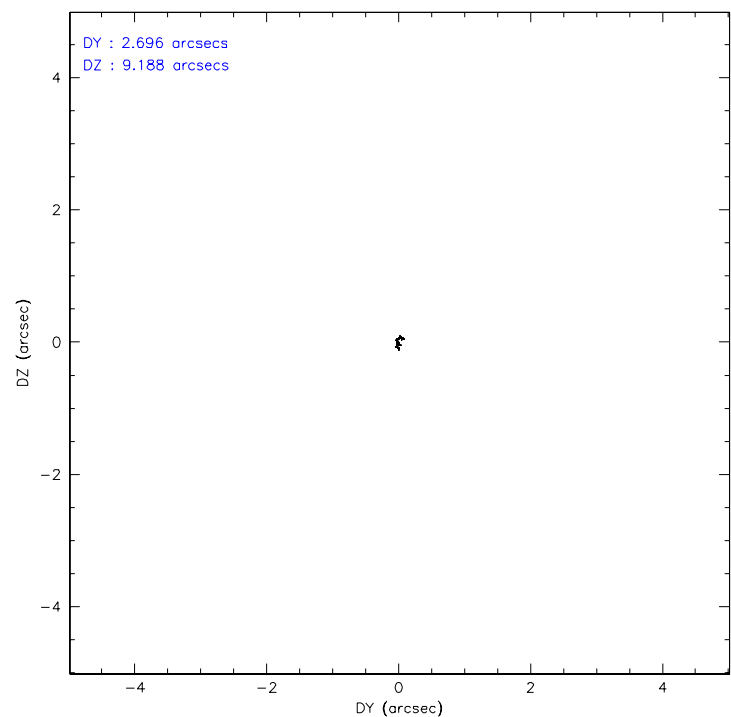
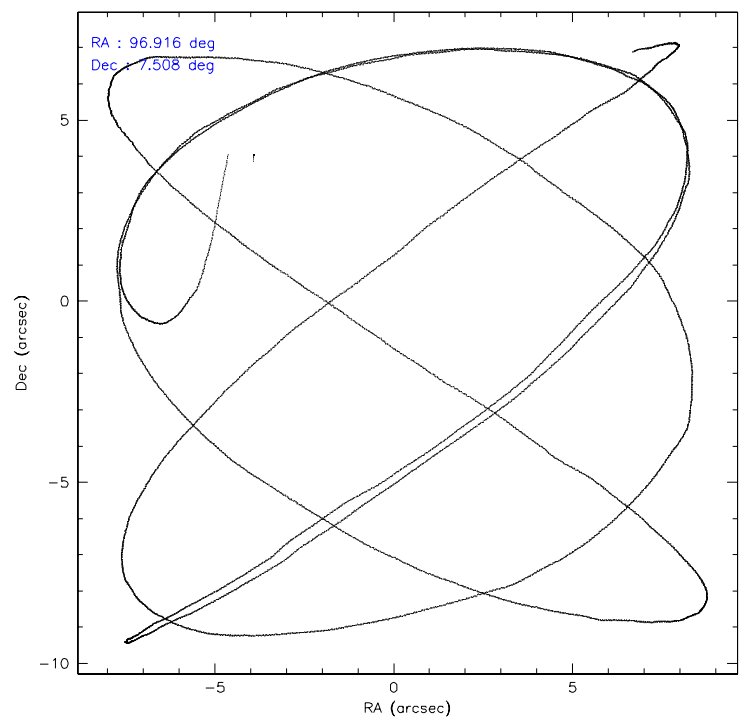
	ccd 7
level 1 events	8135
rejected events	5018
rejected %	61%

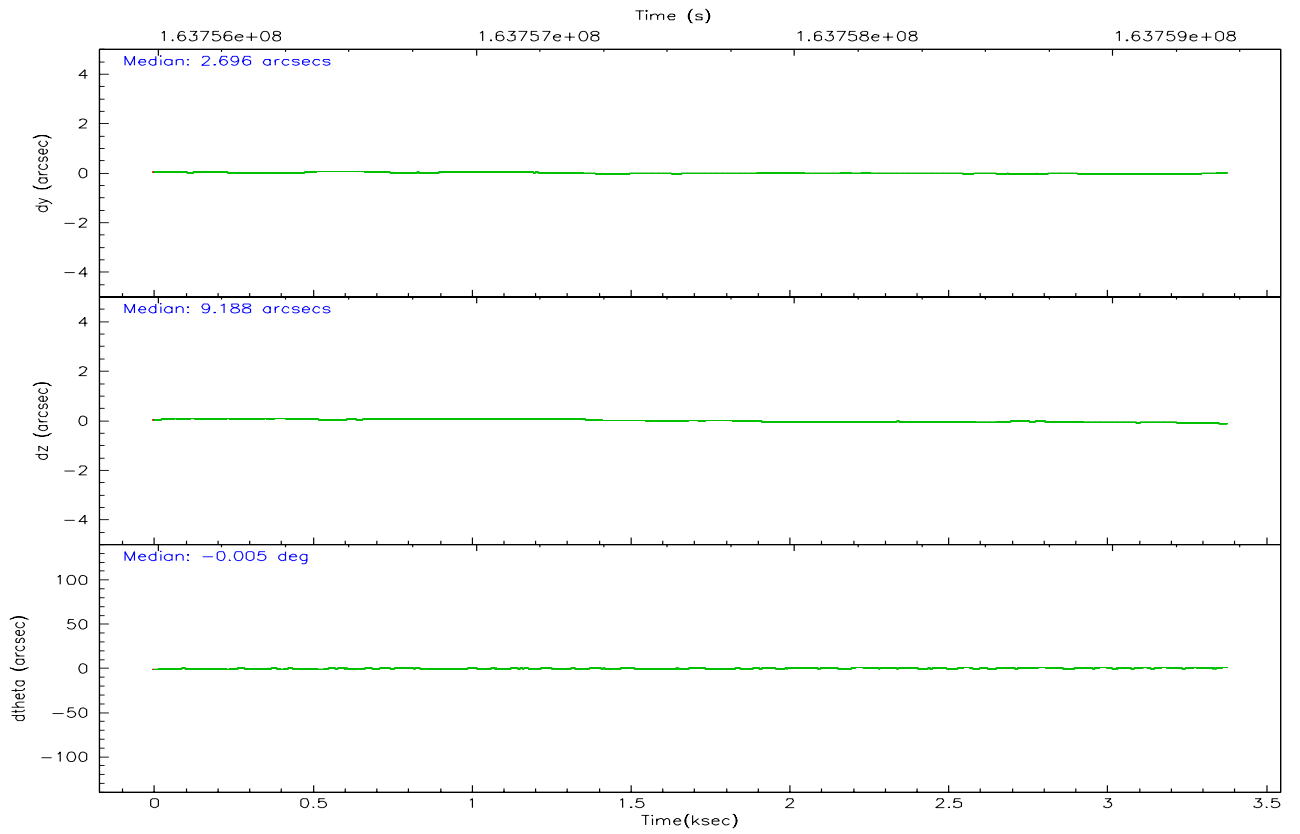
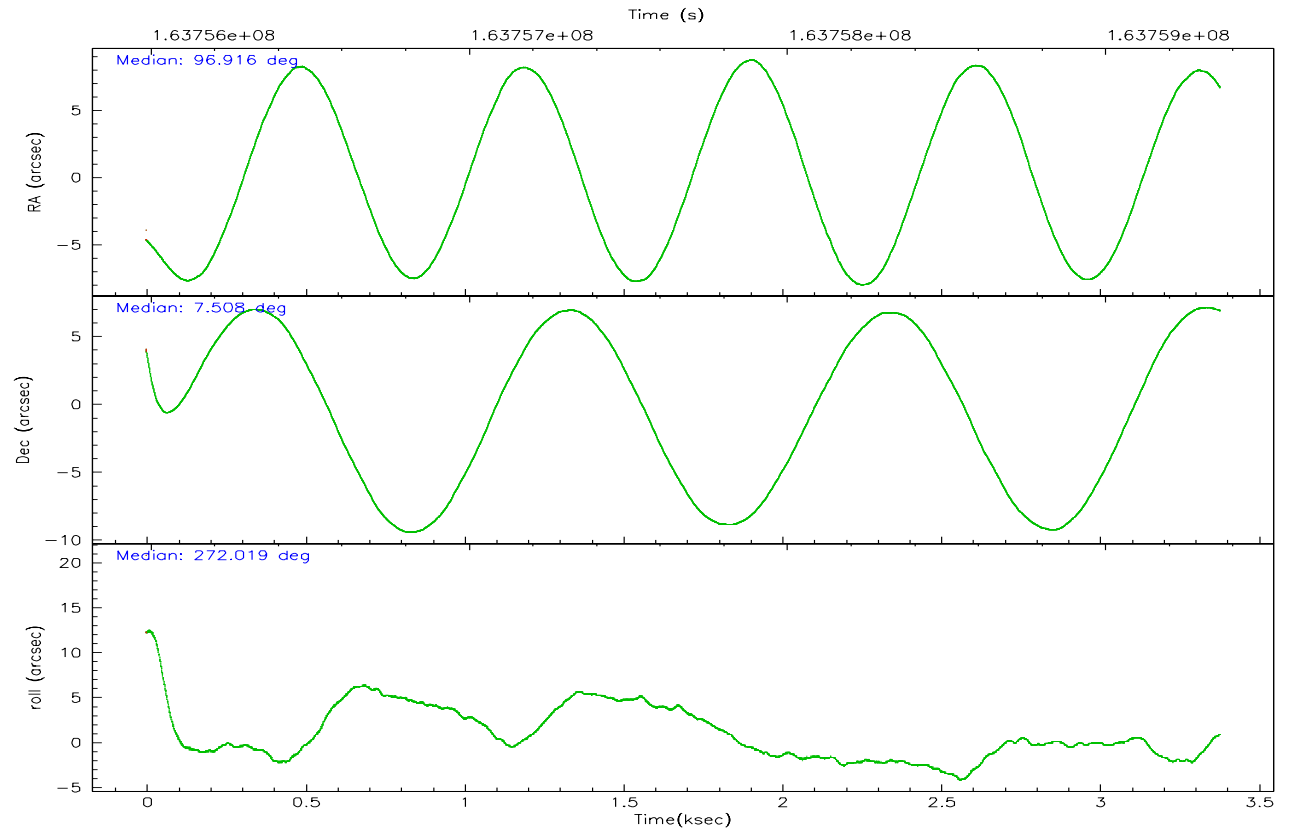
	ccd 7
grade 0 events	284
	3%
grade 1 events	9
	0%
grade 2 events	832
	10%
grade 3 events	271
	3%
grade 4 events	290
	3%
grade 5 events	588
	7%
grade 6 events	1845
	22%
grade 7 events	4016
	49%

2.2 Compared Parameters

Parameter	Planned	Actual	Parameter	Planned	Actual
Instrument	ACIS	ACIS	Obspar format version number	6	6
Detector	ACIS-7	ACIS-7	Obspar file type	PREDICTED	ACTUAL
Grating	NONE	NONE	Obspar update status	NONE	UPDATED
Data mode	FAINT	FAINT	On-chip summing requested	N	N
Observation mode	POINTING	POINTING	Subarray requested	1/4	1/4
Pointing RA	96.901666	96.91654334007805	Subarray start row	0	385
Pointing Dec	7.530813	7.508088818150306	Subarray row count	1024	256
Pointing Roll	271.870187	272.0249046670938	Alternating exposures requested	N	N
SIM focus pos (mm)	-0.684267	-0.6828225247311905	Primary exposure time	0.000000	0.8
SIM defocus (mm)	0	0.001444936568705701			
SIM translation stage pos (mm)	-190.132523	-190.1425803651734			
SIM translation stage offset (mm)	0	0.01005778216563158			
Observation start time	163756360.184000	163755300.63103			
Observation start date	2003-03-11T07:51:36	2003-03-11T07:35:00			
Observation end time	163759360.184000	163759580.00621			
Observation end date	2003-03-11T08:41:36	2003-03-11T08:46:20			
Read mode	TIMED	TIMED			

2.3 Aspect



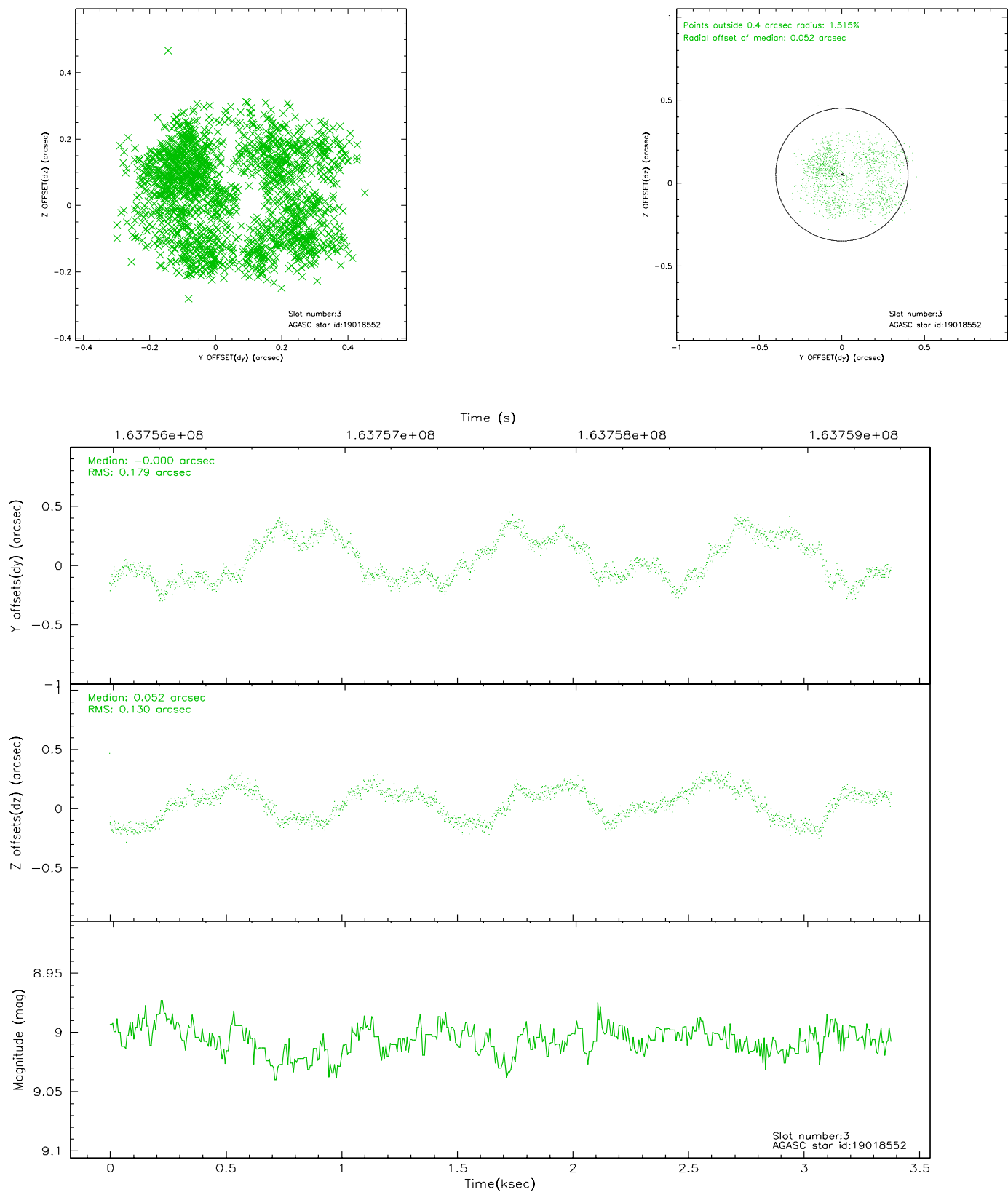


Slot Statistics

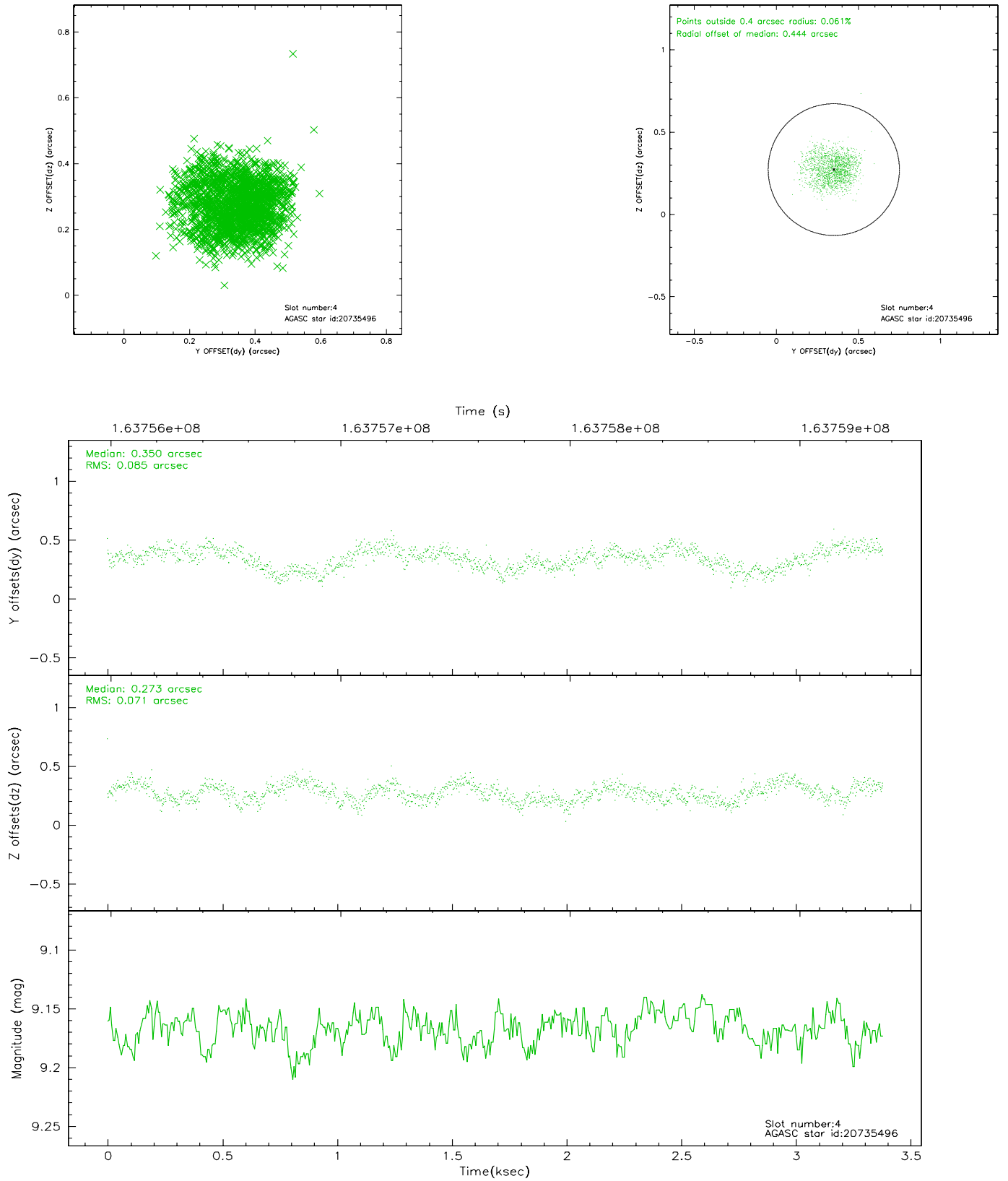
slot	status	id	mag	n_pts	med_dy	med_dz	dr1	dr2	ra	dec	mean_y	mean_z
0	FID	ACIS-S-1	7.20	825	0.005	0.053	0.007	0.012	0.000000	0.000000	940.70	-1725.94
1	FID	ACIS-S-4	7.20	825	-0.050	-0.035	0.006	0.010	0.000000	0.000000	2159.10	176.20
2	FID	ACIS-S-5	7.24	825	0.019	-0.006	0.006	0.010	0.000000	0.000000	-1805.74	171.93
3	GUIDE	19018552	9.01	1650	-0.000	0.052	0.238	0.361	97.240038	6.938588	2170.55	1139.55
4	GUIDE	20735496	9.17	1650	0.350	0.273	0.120	0.183	97.534662	6.892750	2370.29	2187.76
5	GUIDE	95955424	9.93	1647	-0.035	-0.278	0.137	0.232	96.317831	7.630464	-425.64	-2069.09
6	GUIDE	95947040	9.20	1649	-0.214	-0.149	0.114	0.172	96.430739	8.103872	-2117.28	-1611.61
7	GUIDE	95950064	9.42	1649	-0.125	0.109	0.114	0.190	97.421550	8.015895	-1686.96	1908.61

2.4 Star Slots

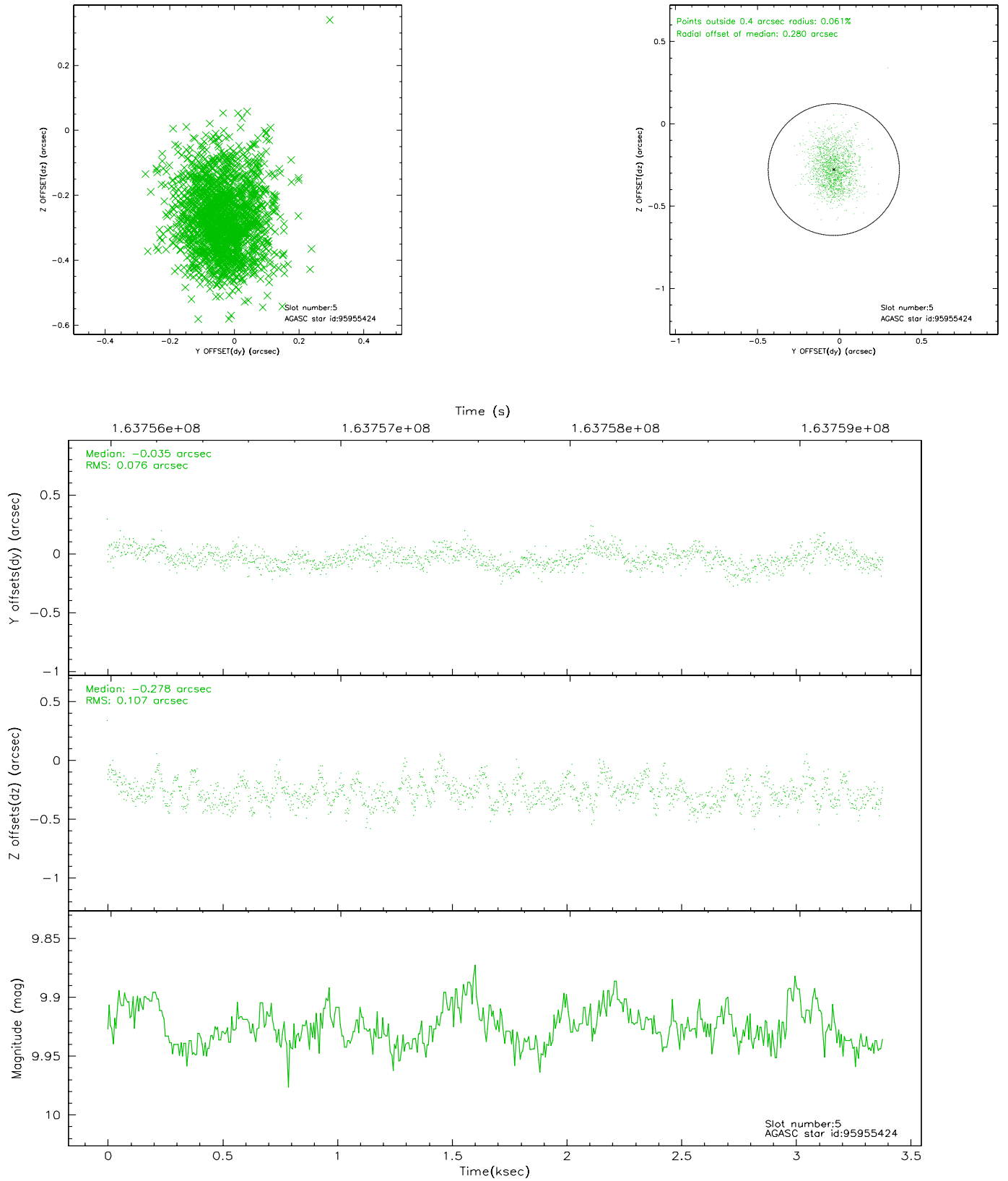
2.4.1 Slot 3



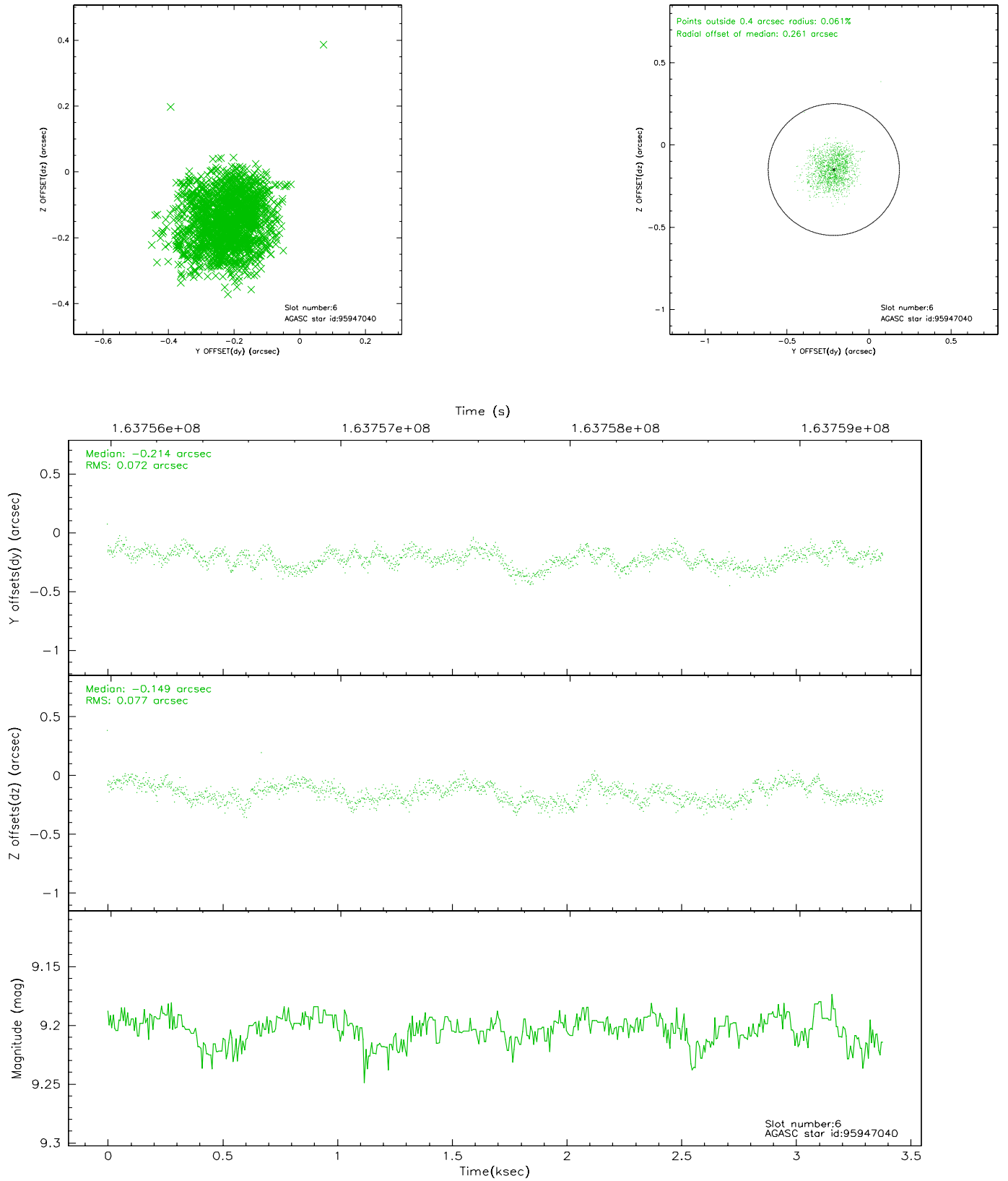
2.4.2 Slot 4



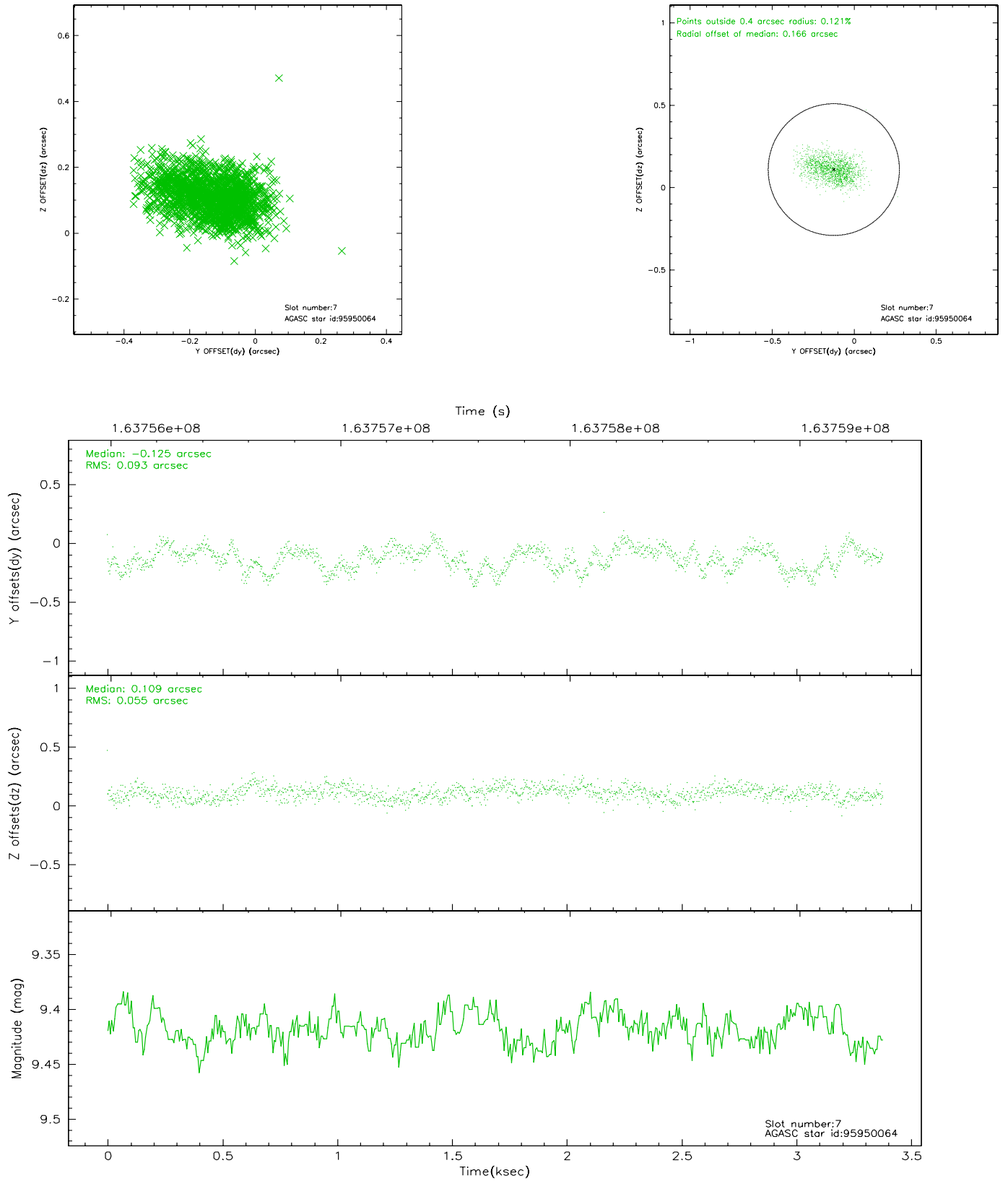
2.4.3 Slot 5



2.4.4 Slot 6

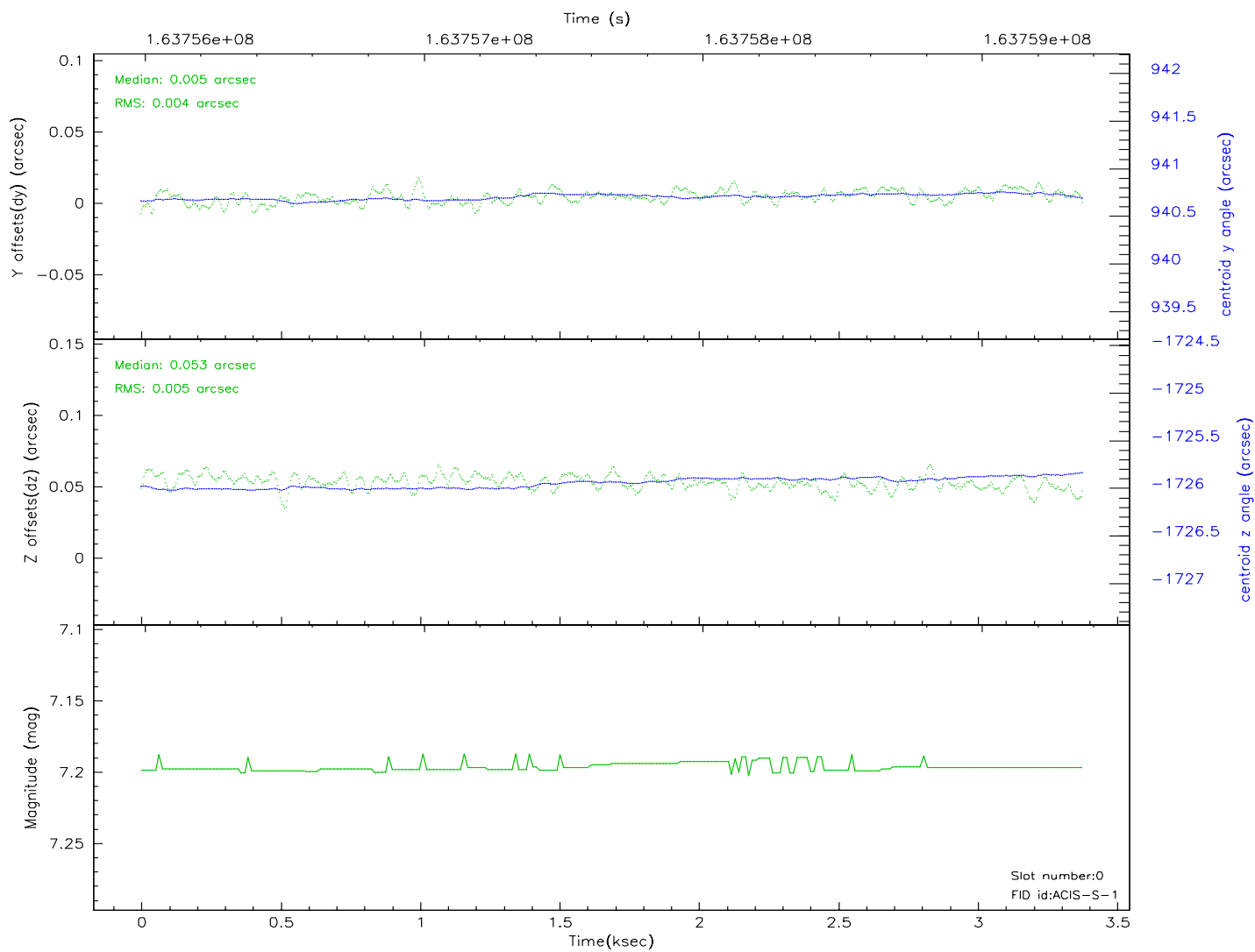
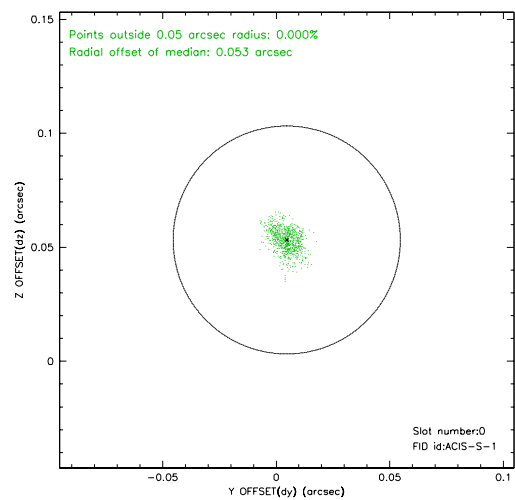
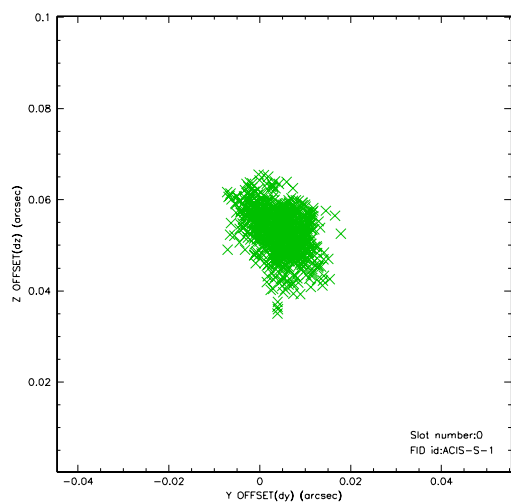


2.4.5 Slot 7

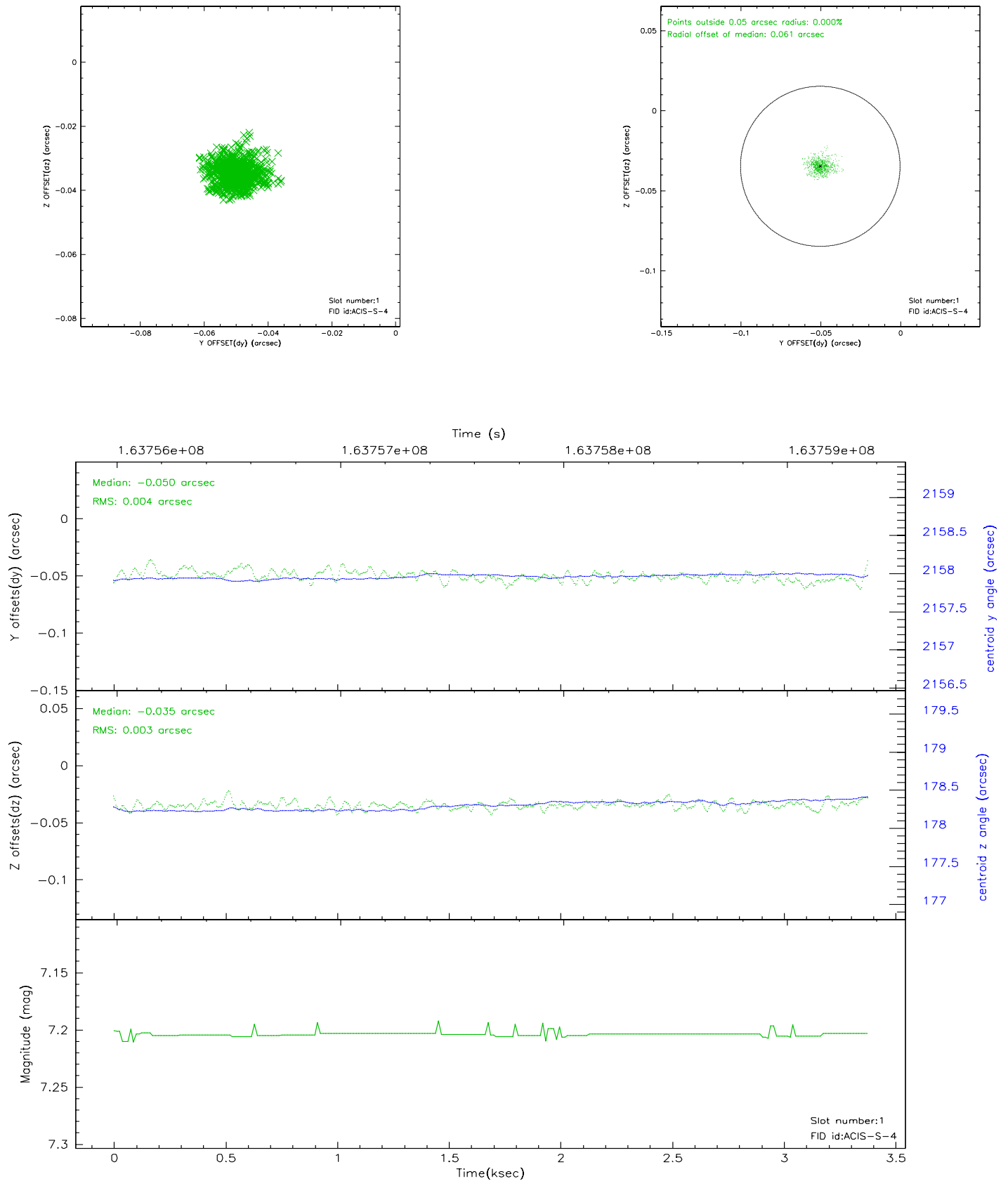


2.5 FID Slots

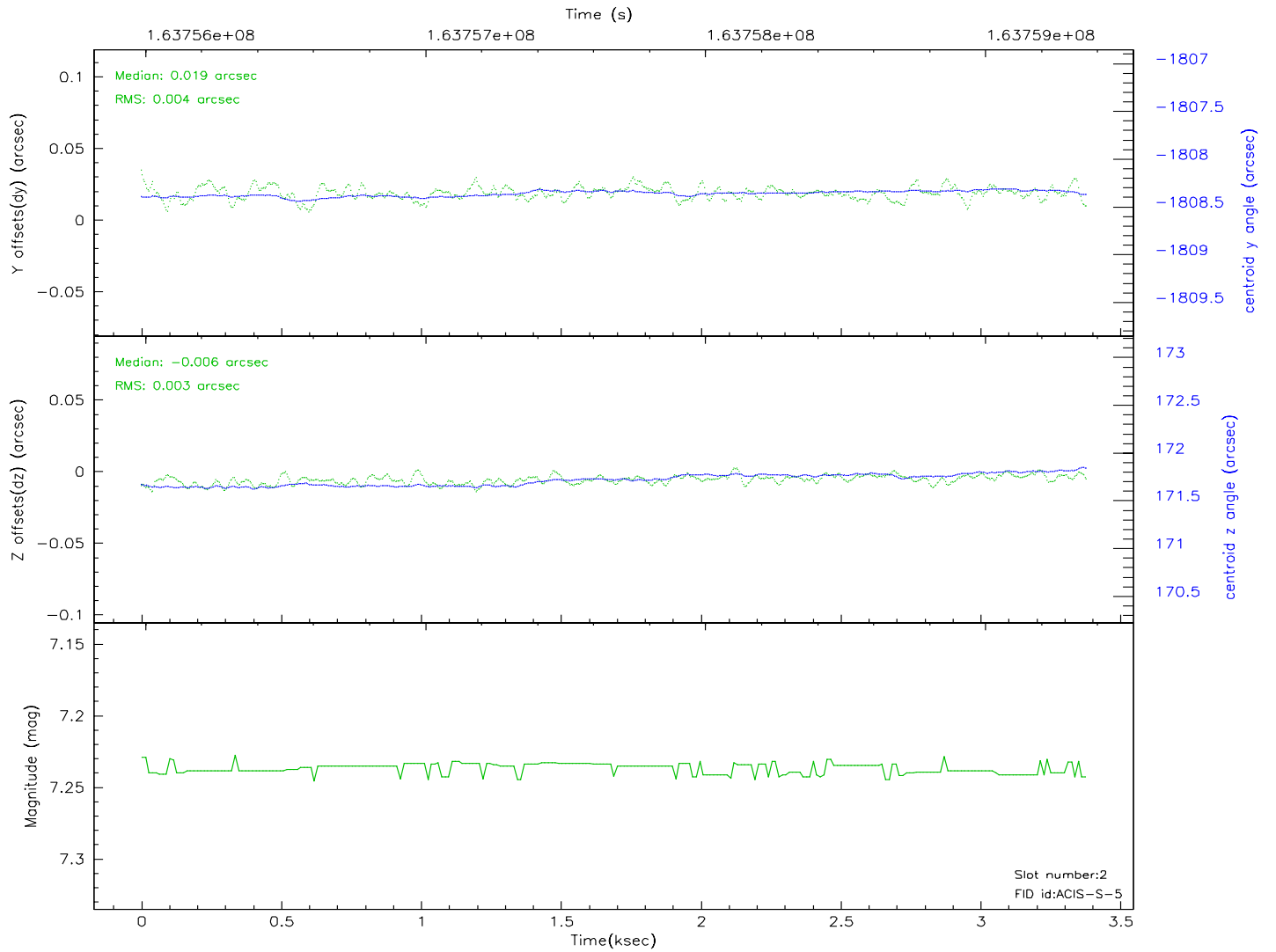
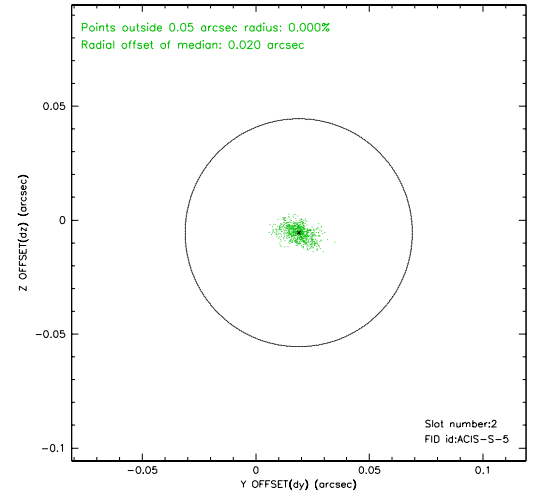
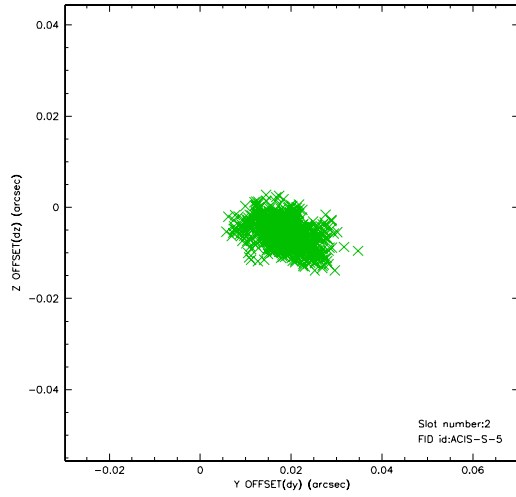
2.5.1 Slot 0



2.5.2 Slot 1



2.5.3 Slot 2



3 Point Sources

A Summary

A.1 Status

V&V Scientist	Beth Sundheim
V&V Date (YYYY-MM-DD)	2006.07.23
V&V Edition	1
V&V Disposition and Status	OK
V&V Charge Time	3.378

A.2 Comments