

V&V Reference Report

L2 ASCDS Version : 7.6.8.1

Observation 3830 - L2 Version 001
Chandra X-Ray Center

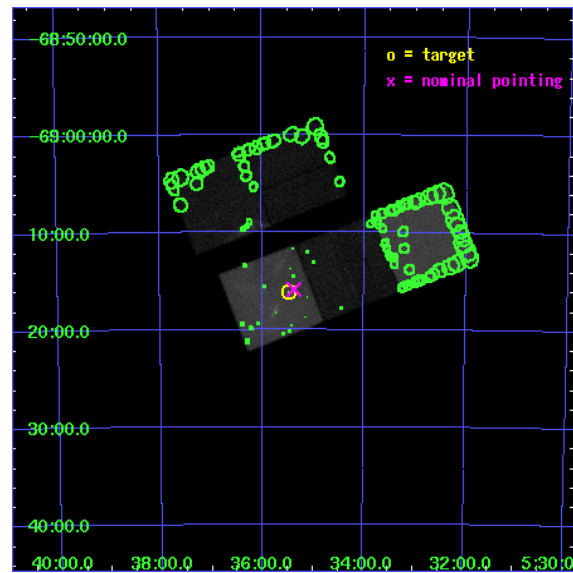
L2 Processing Date : Aug 10 2006

Contents

1	Front	2
2	OBI	3
2.1	OBI	3
2.1.1	Images	3
2.1.2	Bias	3
2.1.3	Parameters	4
2.1.4	Events	4
2.2	Compared Parameters	5
2.3	Aspect	6
2.4	Star Slots	9
2.4.1	Slot 3	9
2.4.2	Slot 4	10
2.4.3	Slot 5	11
2.4.4	Slot 6	12
2.4.5	Slot 7	13
2.5	FID Slots	14
2.5.1	Slot 0	14
2.5.2	Slot 1	15
2.5.3	Slot 2	16
3	Point Sources	17
A	Summary	18
A.1	Status	18
A.2	Comments	18

1 Front

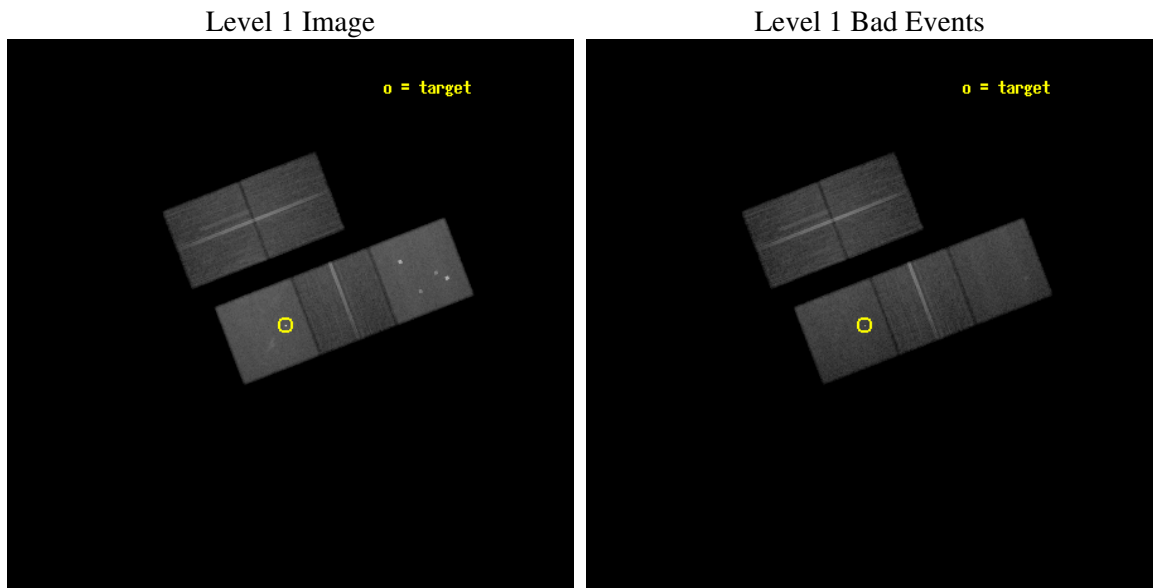
seq_num	500309
obs_id	3830
title	MONITORING THE BIRTH OF SUPERNOVA REMNANT SNR1987A
observer	Dr. David Burrows
object	SNR1987A
dtcycle	0
cycle	P
ra_targ	83.866667
dec_targ	-69.26975
ra_nom	83.843343865709
dec_nom	-69.264746022286
roll_nom	158.90370265702
revision	2
ontime	45907.858941466
livetime	45308.038967521
ontime2	45904.717971236
ontime3	45907.858961403
ontime5	45907.858941466
ontime6	45907.858941466
ontime7	45907.858941466
l2events	473192



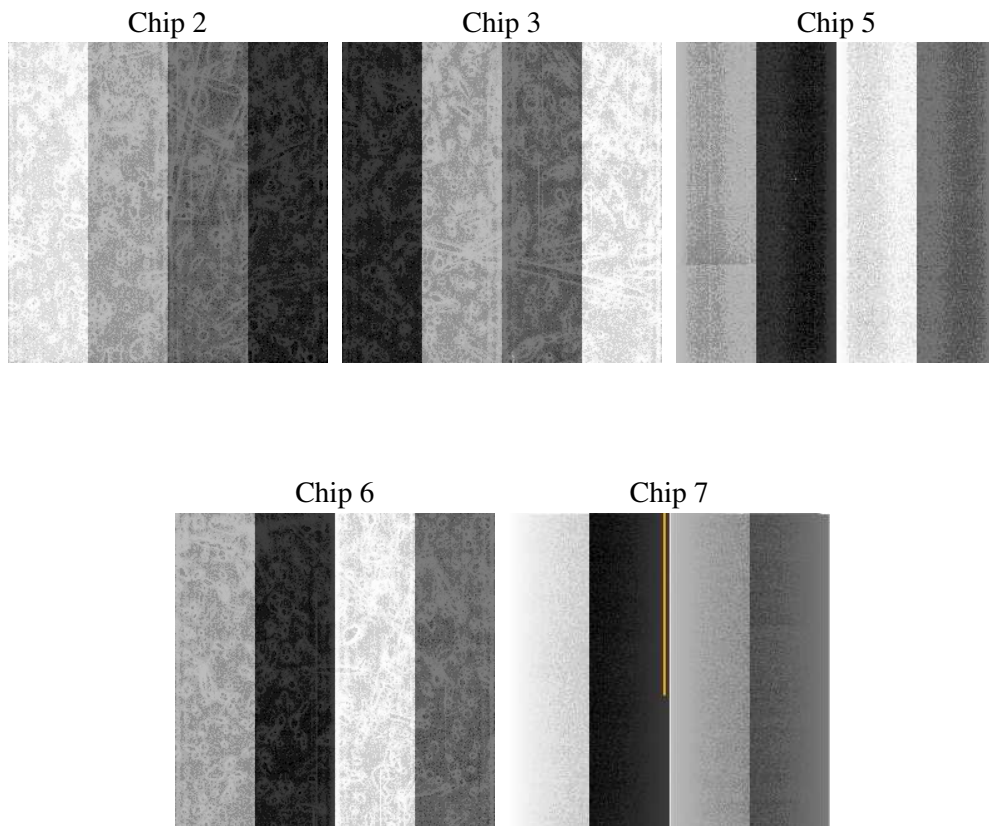
2 OBI

2.1 OBI

2.1.1 Images



2.1.2 Bias



2.1.3 Parameters

obi_num	0
ascdsver	7.6.8.1
caldbver	3.2.2
date	2006-08-10T14:01:58
revision	2

sched_exp_time	45757.824000
ontime	46408.312075913
ontime2	46310.939905733
ontime3	46323.50408569
ontime5	46408.312075913
ontime6	46329.78607595
ontime7	46408.312075913
l1events	1730426

2.1.4 Events

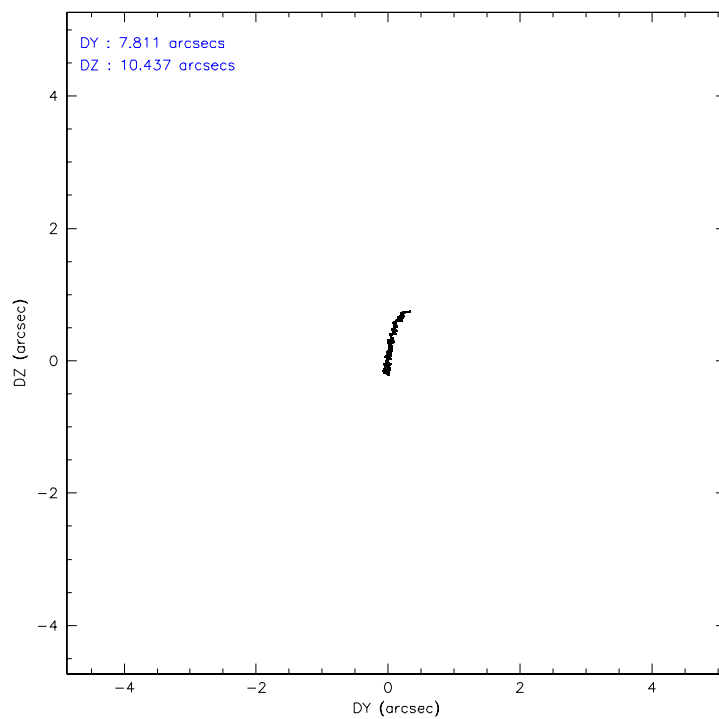
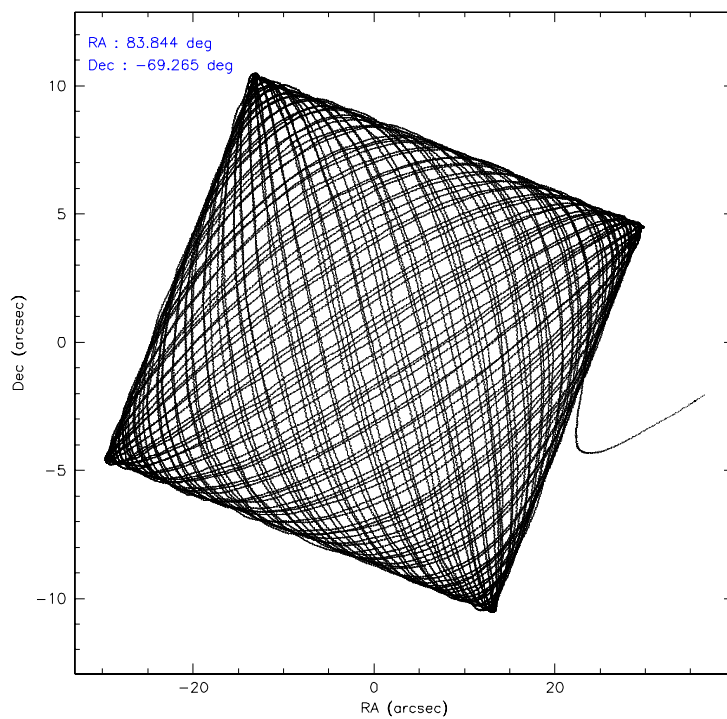
	ccd 2	ccd 3	ccd 5	ccd 6	ccd 7
level 1 events	282234	287480	442337	293816	424559
rejected events	245200	244704	235090	252700	239133
rejected %	86%	85%	53%	86%	56%

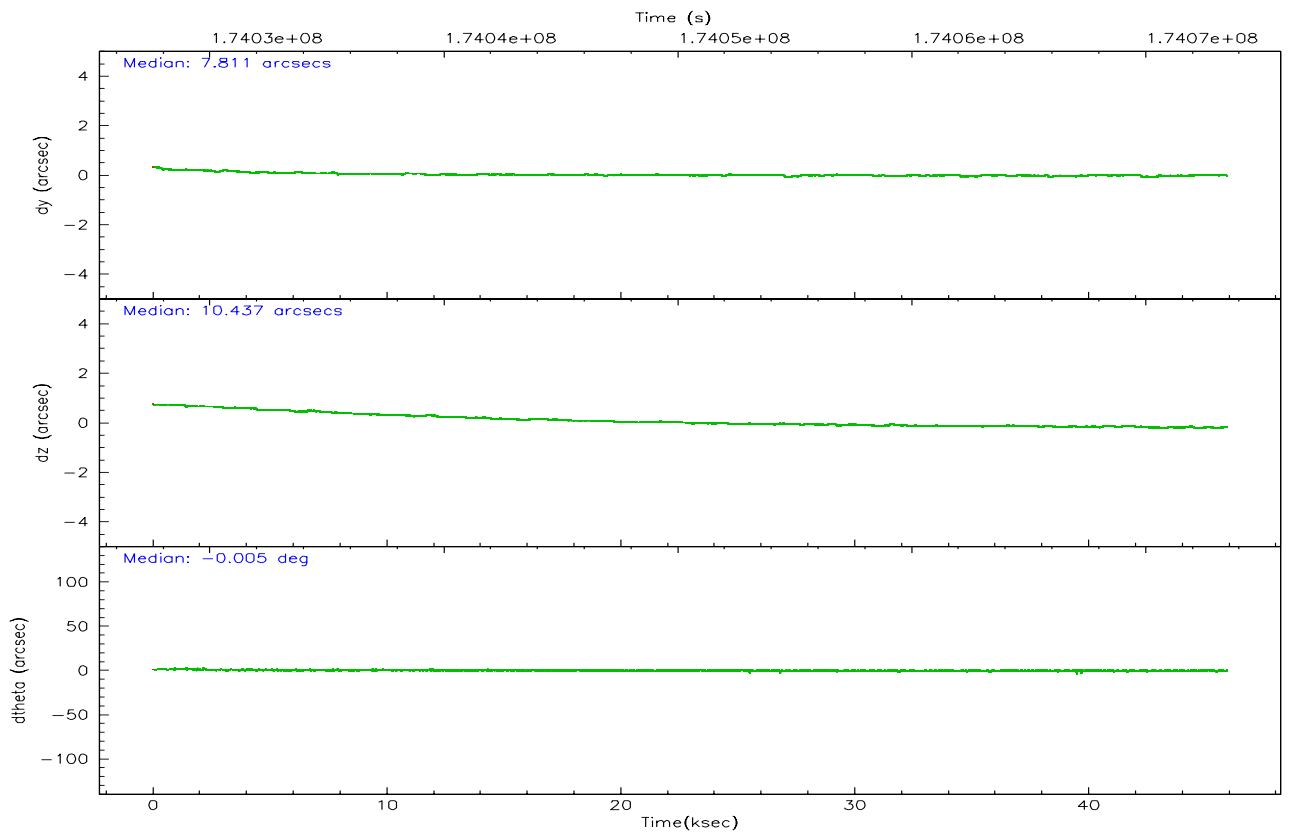
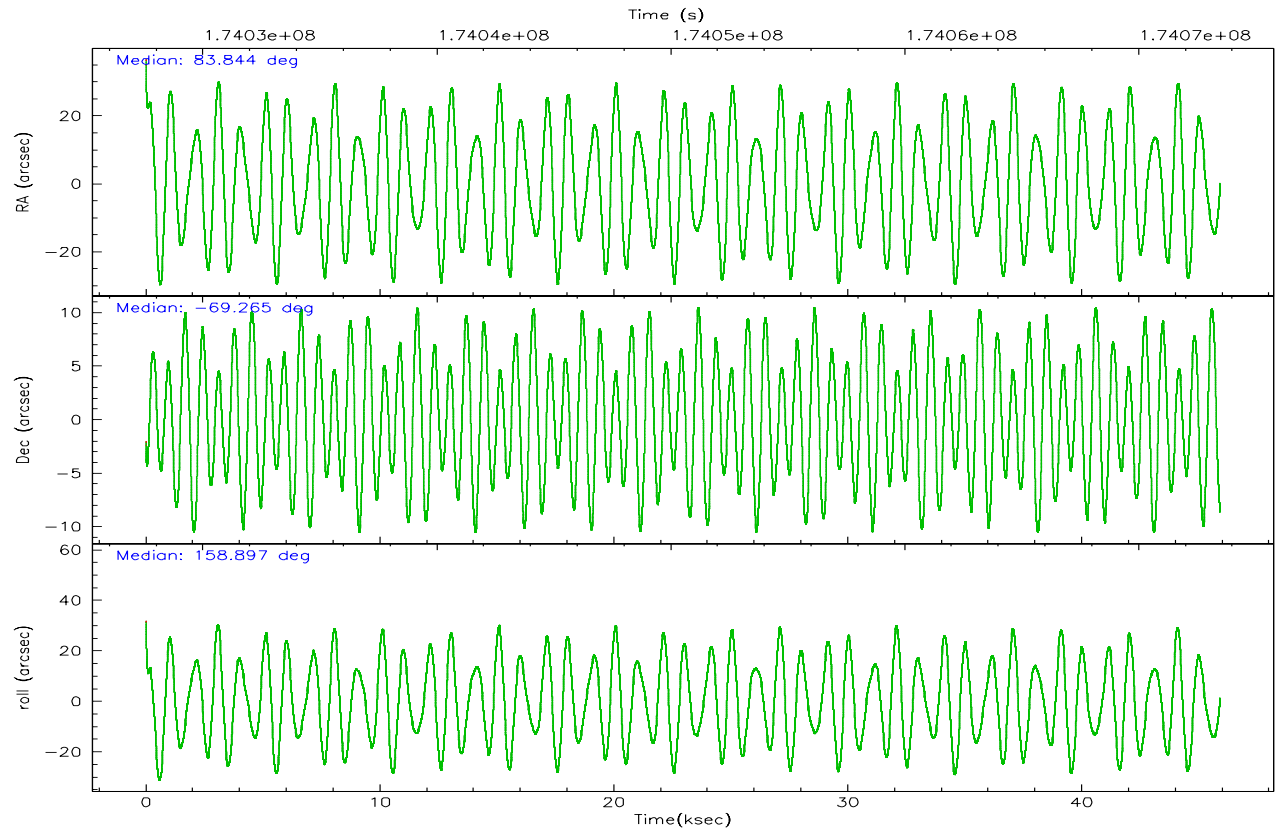
	ccd 2	ccd 3	ccd 5	ccd 6	ccd 7
grade 0 events	18249	23362	29458	20301	20631
	6%	8%	6%	6%	4%
grade 1 events	172	206	562	166	457
	0%	0%	0%	0%	0%
grade 2 events	7072	6969	62577	7562	47090
	2%	2%	14%	2%	11%
grade 3 events	3371	3517	5329	3487	12191
	1%	1%	1%	1%	2%
grade 4 events	3273	3457	5053	3420	11806
	1%	1%	1%	1%	2%
grade 5 events	10692	12197	20372	13156	25982
	3%	4%	4%	4%	6%
grade 6 events	5349	5794	107065	6707	95347
	1%	2%	24%	2%	22%
grade 7 events	234056	231978	211921	239017	211055
	82%	80%	47%	81%	49%

2.2 Compared Parameters

Parameter	Planned	Actual	Parameter	Planned	Actual
Instrument	ACIS	ACIS	Obspar format version number	6	6
Detector	ACIS-23567	ACIS-23567	Obspar file type	PREDICTED	ACTUAL
Grating	NONE	NONE	Obspar update status	NONE	UPDATED
Data mode	FAINT	FAINT	On-chip summing requested	N	N
Observation mode	POINTING	POINTING	Subarray requested	NONE	NONE
Pointing RA	83.919084	83.84334386570912	Alternating exposures requested	N	N
Pointing Dec	-69.260151	-69.26474602228649	Primary exposure time	0.000000	3.1
Pointing Roll	158.817904	158.9037026570215			
SIM focus pos (mm)	-0.684267	-0.6828225247311905			
SIM defocus (mm)	0	0.001444936568705701			
SIM translation stage pos (mm)	-190.132523	-190.1400660498719			
SIM translation stage offset (mm)	0	0.00754346686406393			
Observation start time	174027732.184000	174026501.14085			
Observation start date	2003-07-08T05:01:08	2003-07-08T04:41:41			
Observation end time	174073490.184000	174073804.89286			
Observation end date	2003-07-08T17:43:46	2003-07-08T17:50:04			
Read mode	TIMED	TIMED			

2.3 Aspect



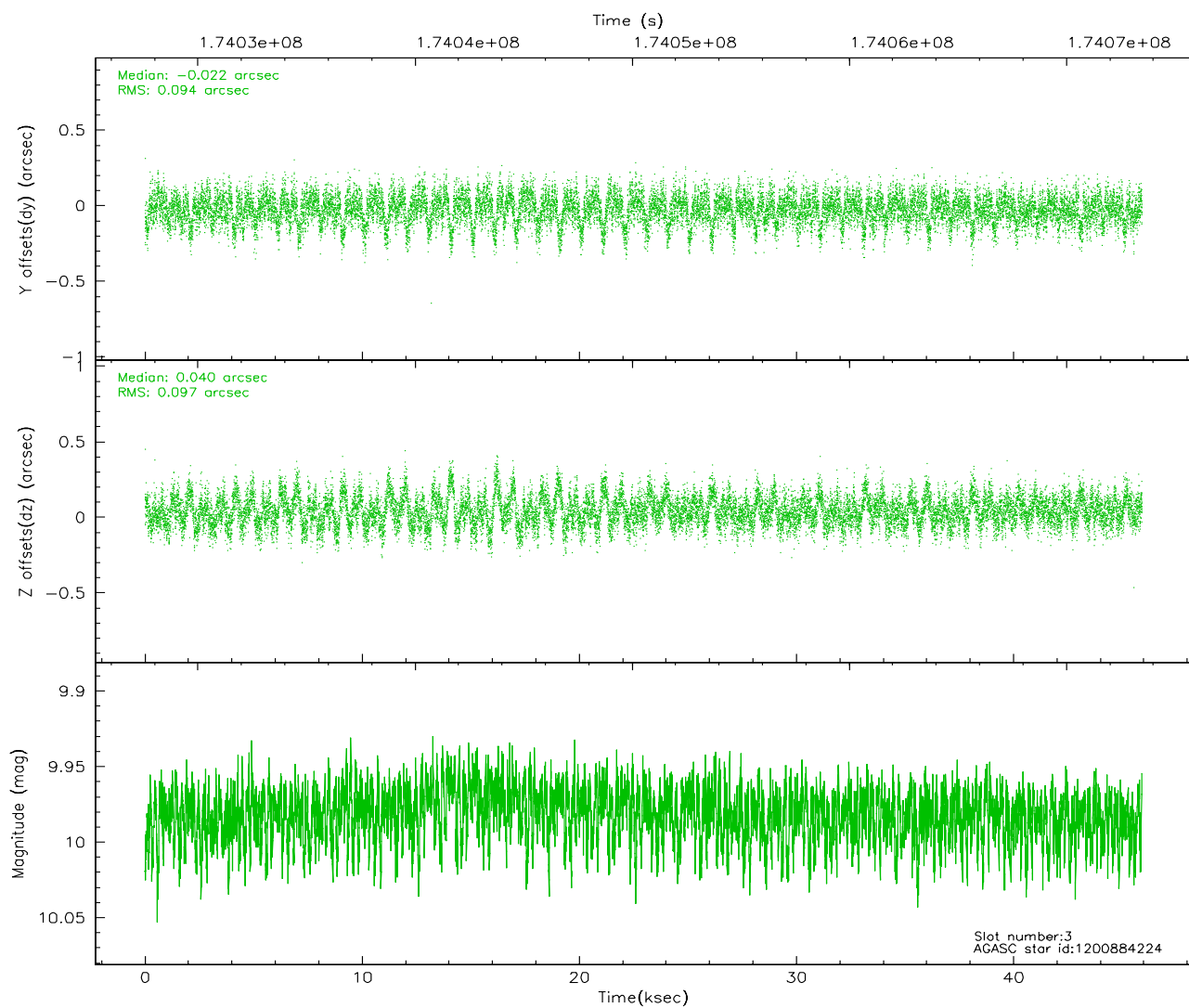
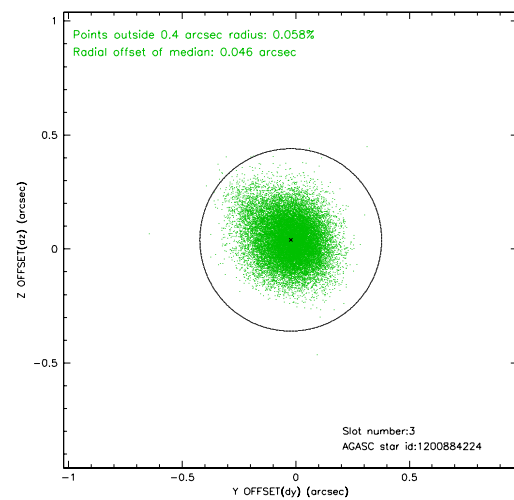
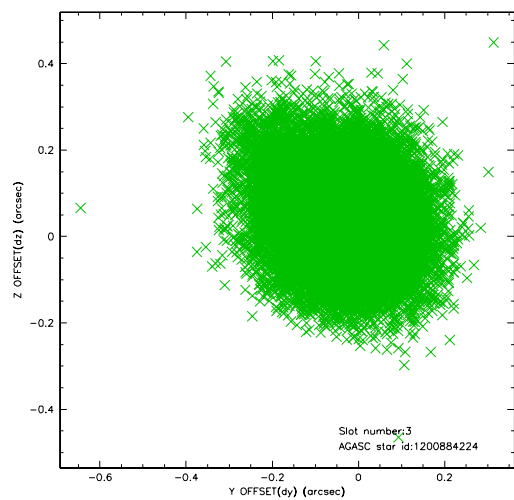


Slot Statistics

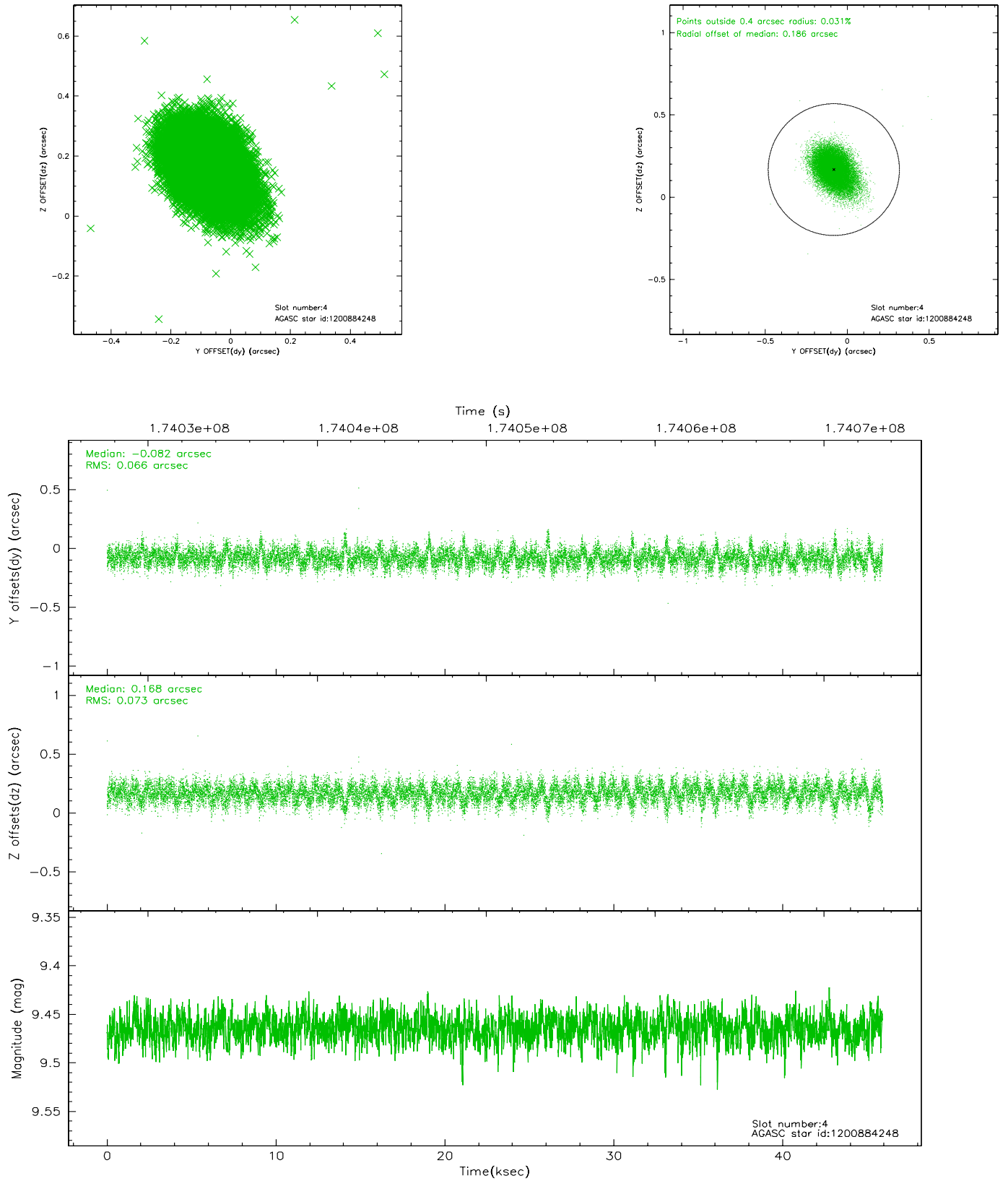
slot	status	id	mag	n_pts	med_dy	med_dz	dr1	dr2	ra	dec	mean_y	mean_z
0	FID	ACIS-S-2	7.10	11198	-0.011	0.006	0.007	0.014	0.000000	0.000000	-760.60	-1731.80
1	FID	ACIS-S-4	7.20	11197	0.006	0.006	0.007	0.012	0.000000	0.000000	2152.68	176.72
2	FID	ACIS-S-6	7.35	11198	-0.024	-0.005	0.007	0.012	0.000000	0.000000	401.33	814.08
3	GUIDE	1200884224	9.98	22377	-0.022	0.040	0.143	0.237	83.314443	-68.577335	1628.57	-2000.62
4	GUIDE	1200884248	9.46	22380	-0.082	0.168	0.103	0.172	83.880915	-68.565170	951.28	-2314.36
5	GUIDE	1200885760	9.46	22379	-0.076	0.031	0.100	0.161	83.723637	-68.777667	865.27	-1526.81
6	GUIDE	1201540776	9.59	22375	0.136	-0.054	0.115	0.192	85.107945	-69.858480	-2157.44	1489.29
7	GUIDE	1201542672	8.20	22391	0.052	-0.186	0.075	0.118	84.492488	-69.957531	-1568.15	2087.82

2.4 Star Slots

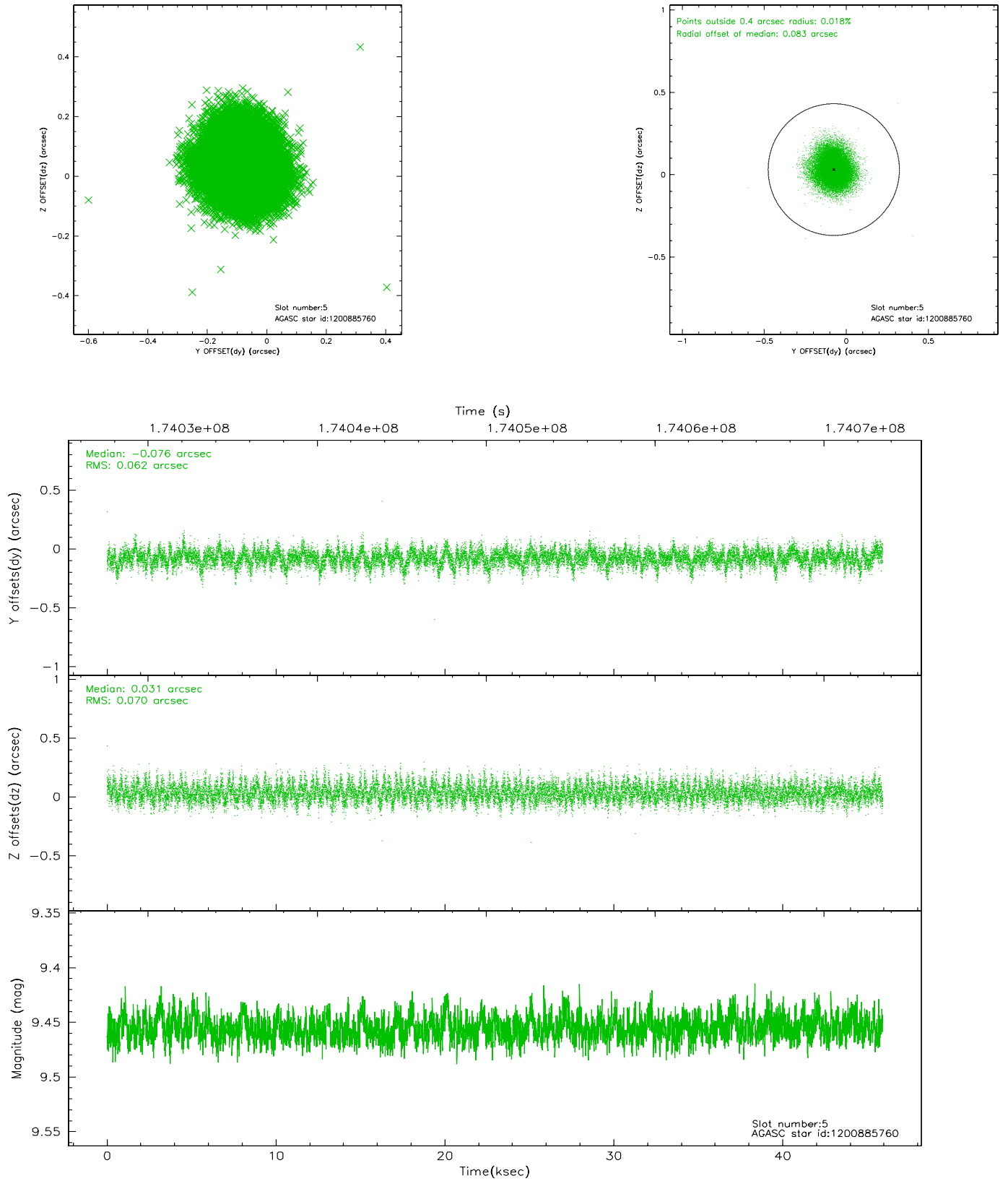
2.4.1 Slot 3



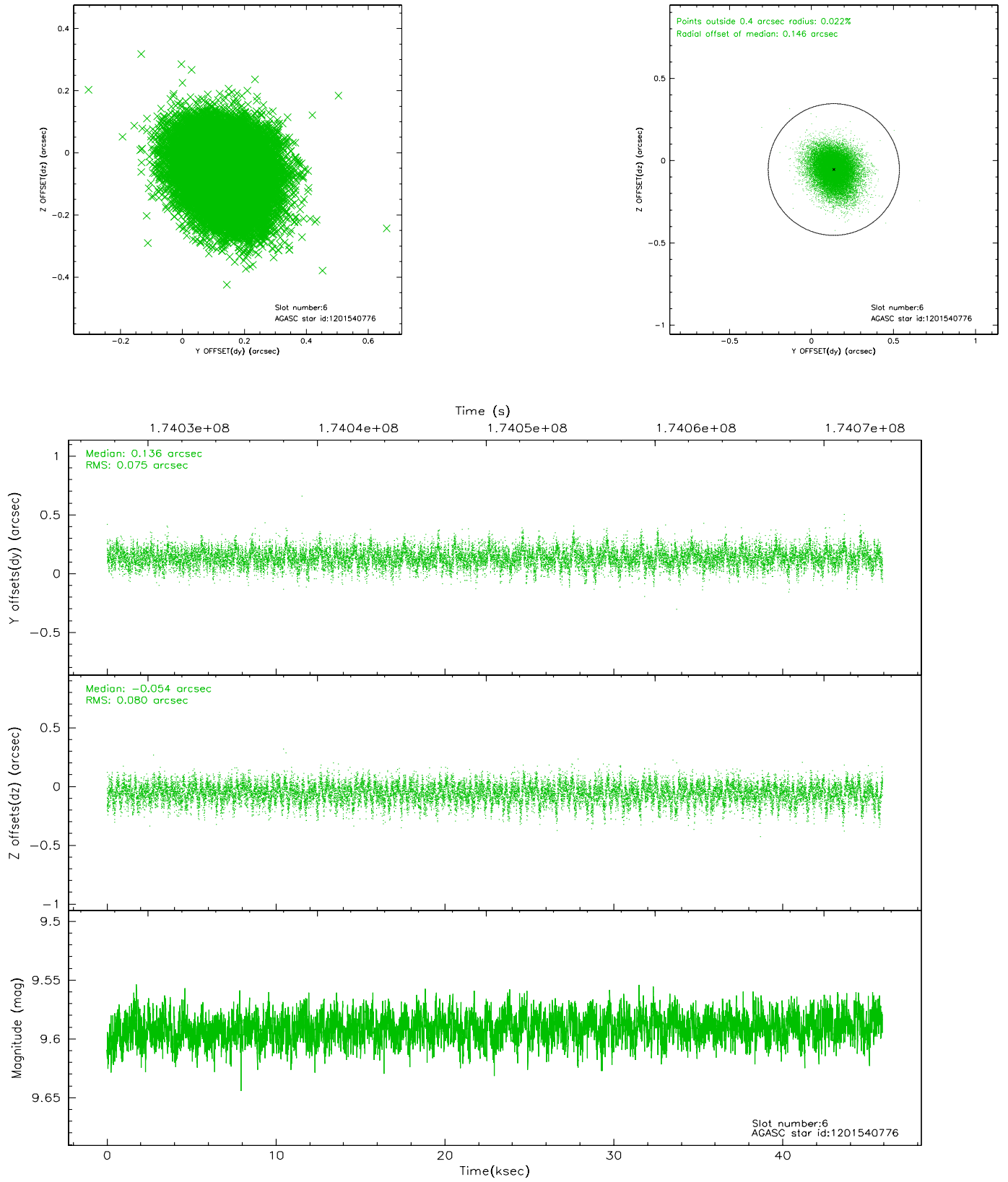
2.4.2 Slot 4



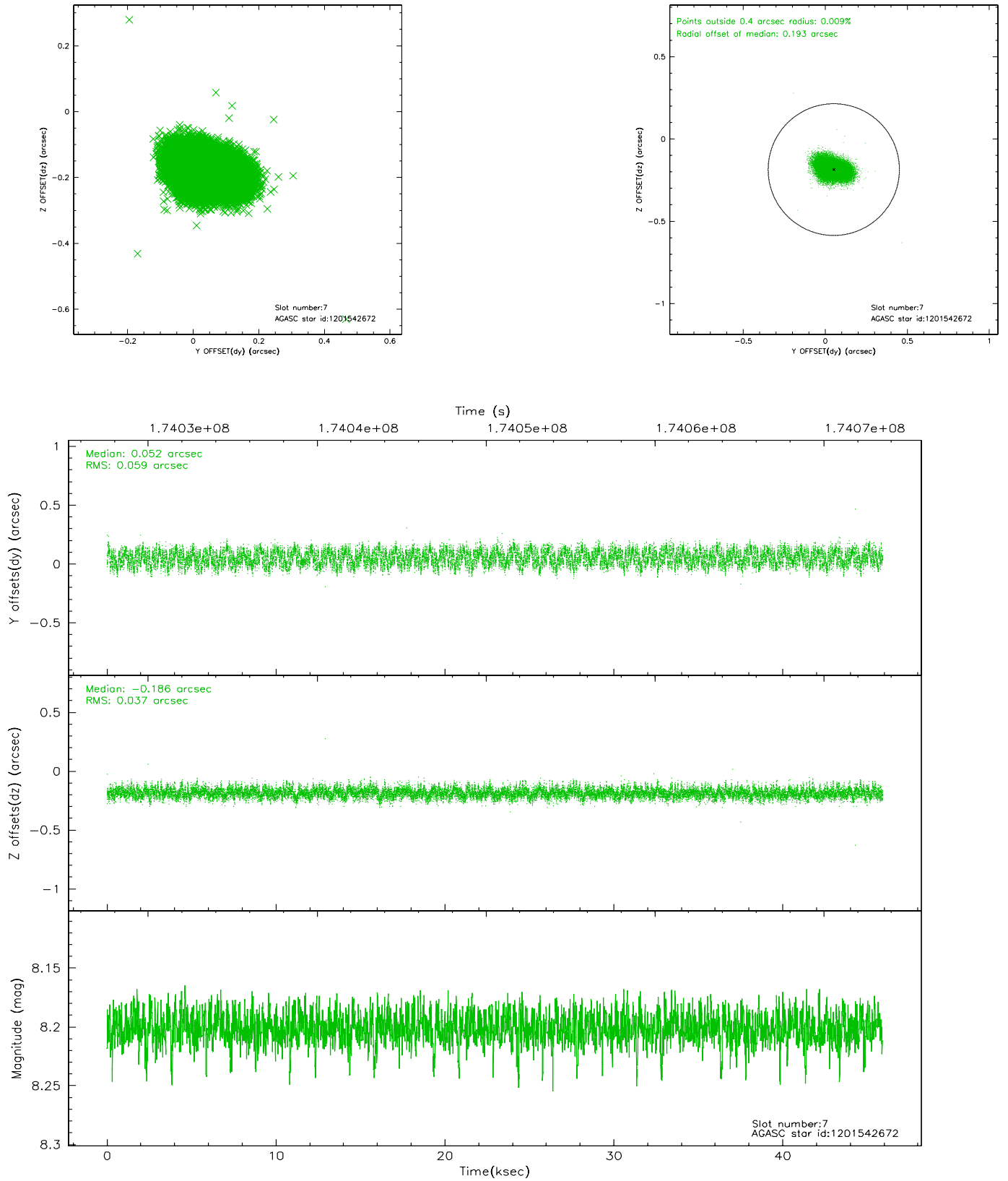
2.4.3 Slot 5



2.4.4 Slot 6

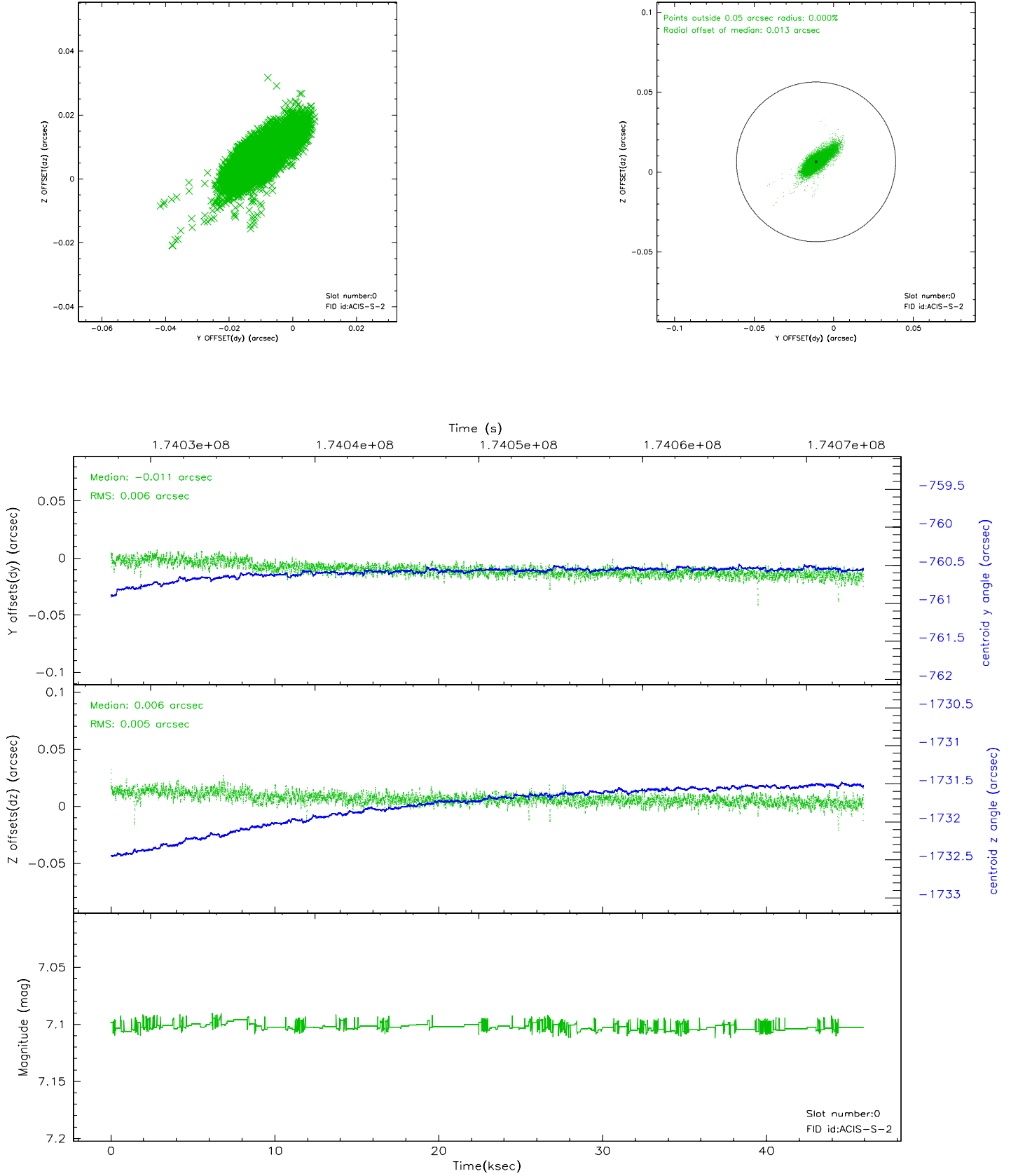


2.4.5 Slot 7

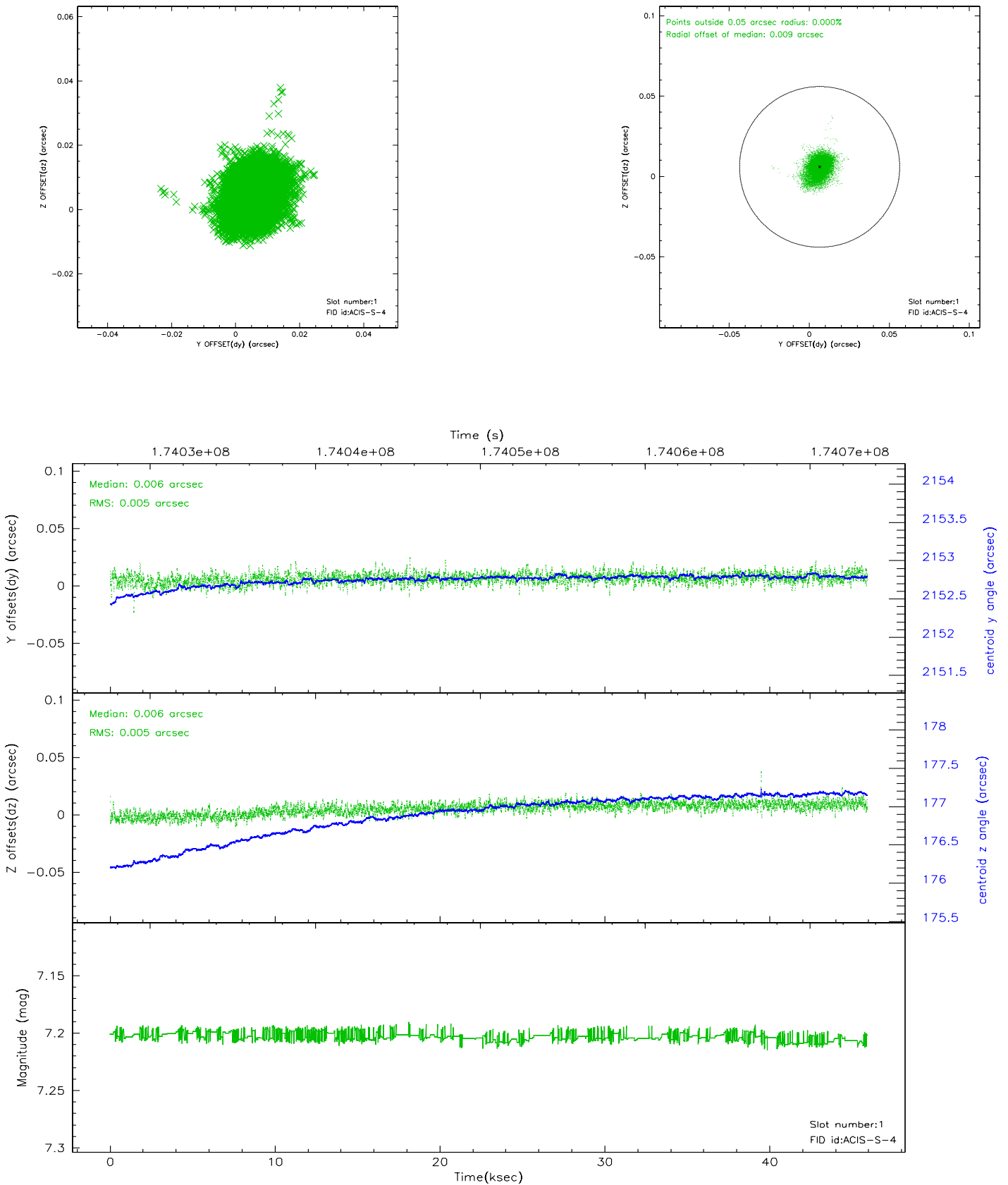


2.5 FID Slots

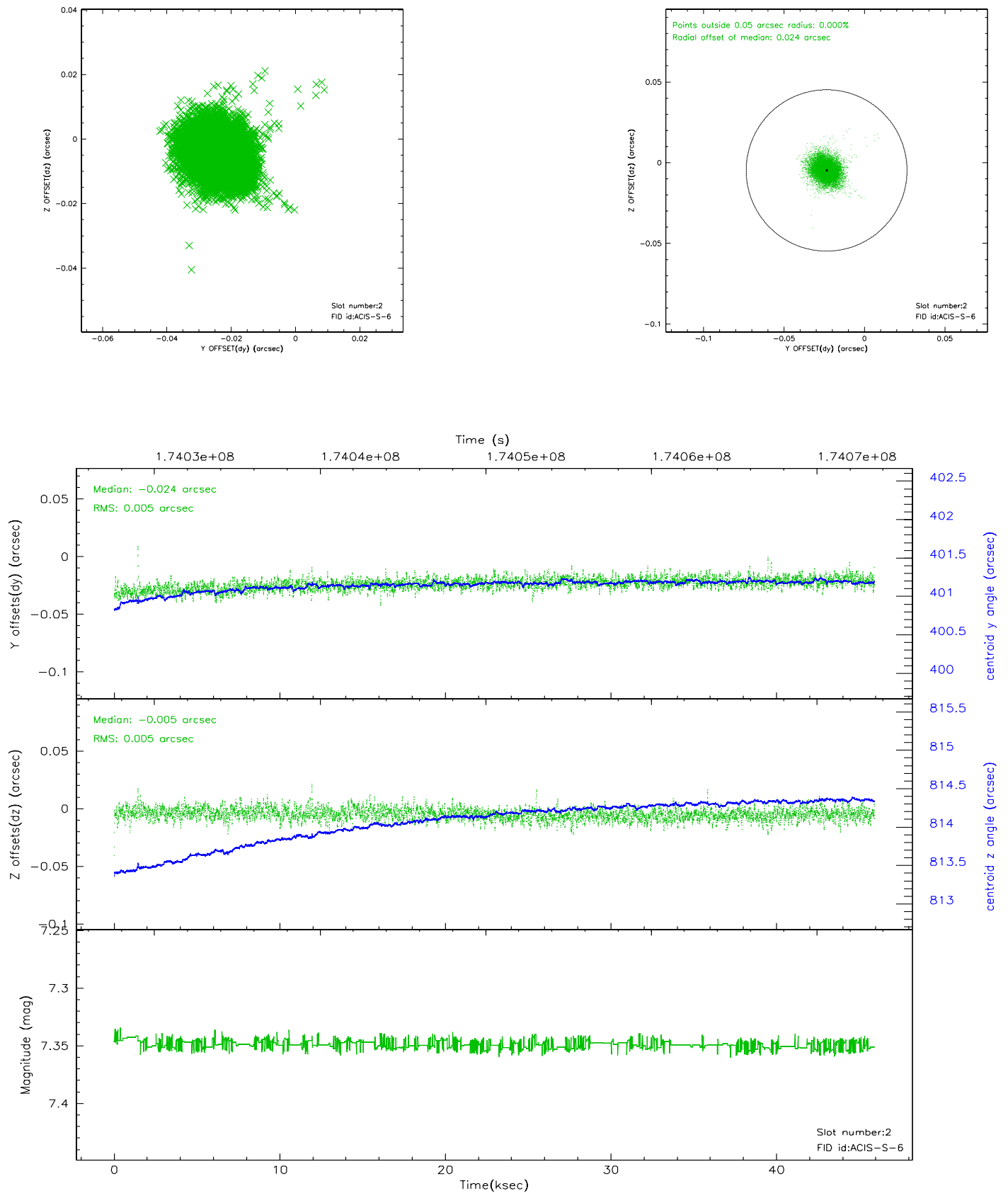
2.5.1 Slot 0



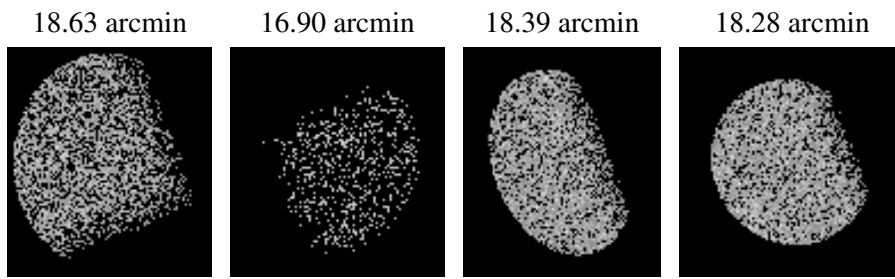
2.5.2 Slot 1



2.5.3 Slot 2



3 Point Sources



A Summary

A.1 Status

V&V Scientist	Jen Lauer
V&V Date (YYYY-MM-DD)	2006.08.10
V&V Edition	1
V&V Disposition and Status	OK
V&V Charge Time	45.907

A.2 Comments

Monitor constraint met.