

# V&V Reference Report

## L2 ASCDS Version : 7.6.8

Observation 3740 - L2 Version 001  
Chandra X-Ray Center

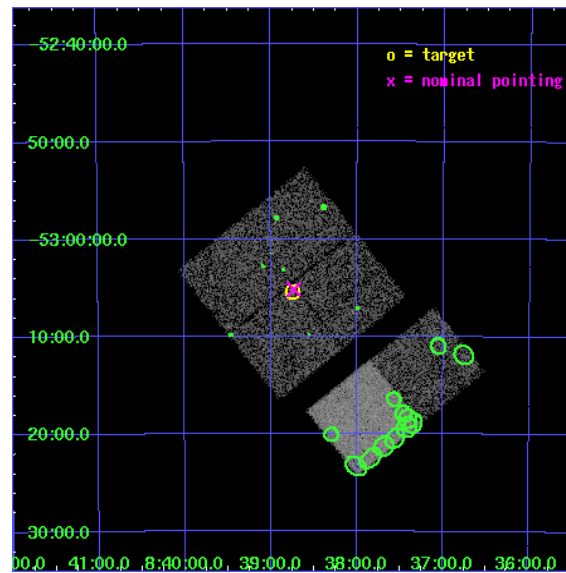
L2 Processing Date : Jul 5 2006

## Contents

<b>1</b>	<b>Front</b>	<b>2</b>
<b>2</b>	<b>OBI</b>	<b>3</b>
2.1	OBI . . . . .	3
2.1.1	Images . . . . .	3
2.1.2	Bias . . . . .	3
2.1.3	Parameters . . . . .	4
2.1.4	Events . . . . .	4
2.2	Compared Parameters . . . . .	5
2.3	Aspect . . . . .	6
2.4	Star Slots . . . . .	9
2.4.1	Slot 3 . . . . .	9
2.4.2	Slot 4 . . . . .	10
2.4.3	Slot 5 . . . . .	11
2.4.4	Slot 6 . . . . .	12
2.4.5	Slot 7 . . . . .	13
2.5	FID Slots . . . . .	14
2.5.1	Slot 0 . . . . .	14
2.5.2	Slot 1 . . . . .	15
2.5.3	Slot 2 . . . . .	16
<b>3</b>	<b>Point Sources</b>	<b>17</b>
<b>A</b>	<b>Summary</b>	<b>18</b>
A.1	Status . . . . .	18
A.2	Comments . . . . .	18

# 1 Front

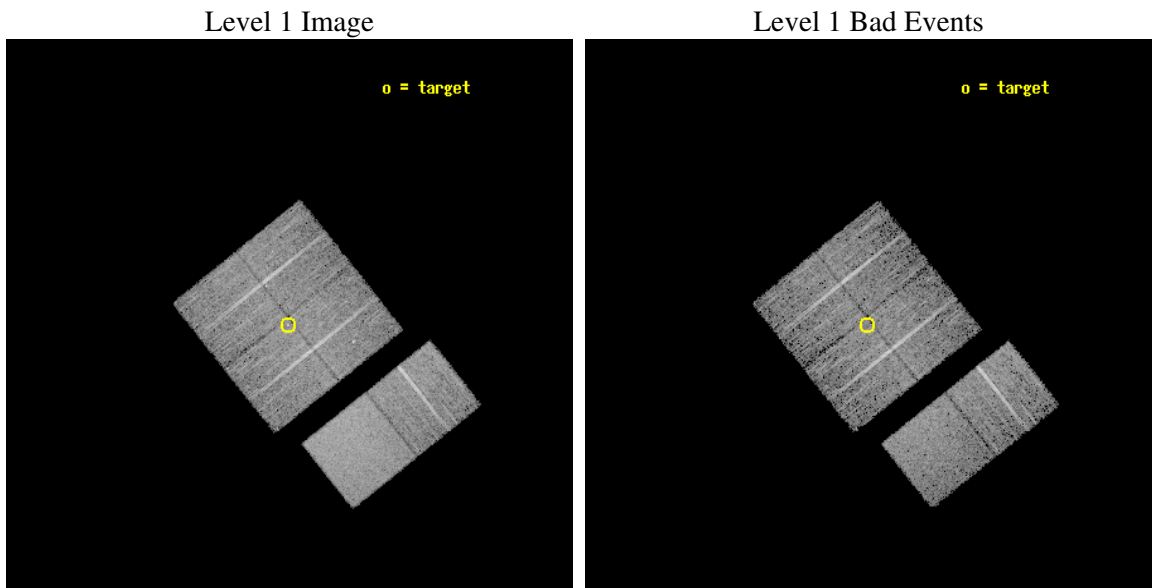
seq_num	200210
obs_id	3740
title	ON THE ORIGIN OF THE X-RAY EMISSION IN LATE B-TYPE STARS
observer	Dr. Nuria Huelamo
object	HD73952
dtcycle	0
cycle	P
ra_targ	129.686667
dec_targ	-53.090389
ra_nom	129.68292649899
dec_nom	-53.08628491083
roll_nom	141.41352136216
revision	2
ontime	7727.999971211
livetime	7630.1433823326
ontime0	7727.999971211
ontime1	7727.999971211
ontime2	7727.999971211
ontime3	7727.999971211
ontime6	7727.999971211
ontime7	7727.999971211
l2events	48800



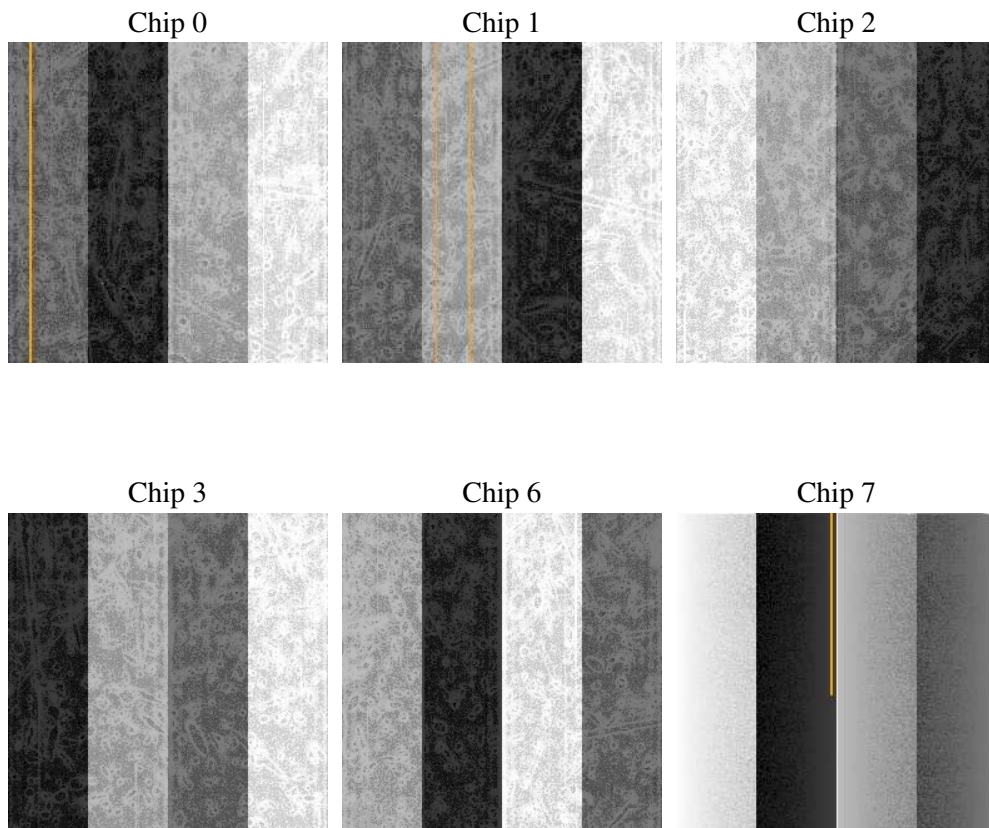
## 2 OBI

### 2.1 OBI

#### 2.1.1 Images



#### 2.1.2 Bias



### 2.1.3 Parameters

obi_num	0
ascdsver	7.6.8
caldsver	3.2.2
date	2006-07-06T01:26:36
revision	2

sched_exp_time	7600.000000
ontime	8608.0965689719
ontime0	8608.0965689719
ontime1	8608.0965689719
ontime2	8608.0965689719
ontime3	8608.0965689719
ontime6	8608.0965689719
ontime7	8608.0965689719
l1events	328640

### 2.1.4 Events

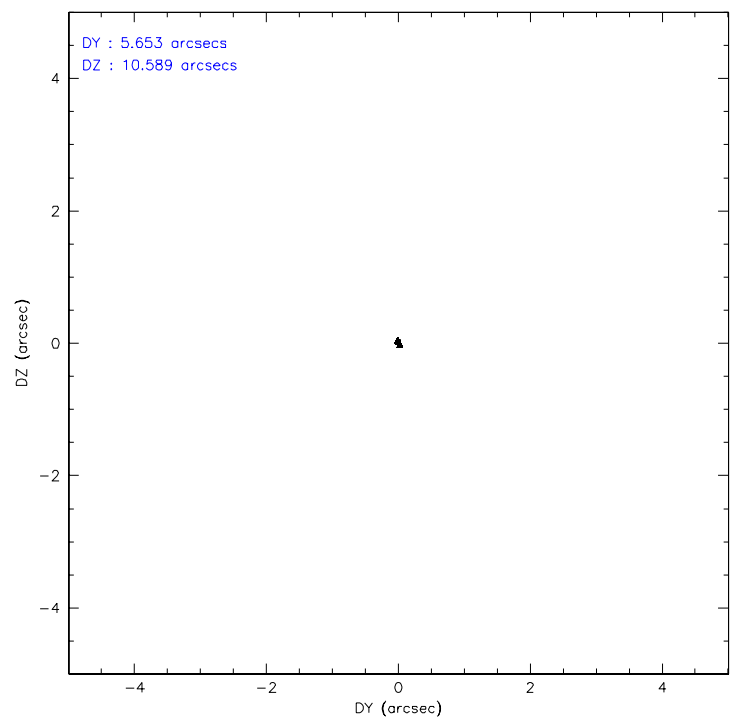
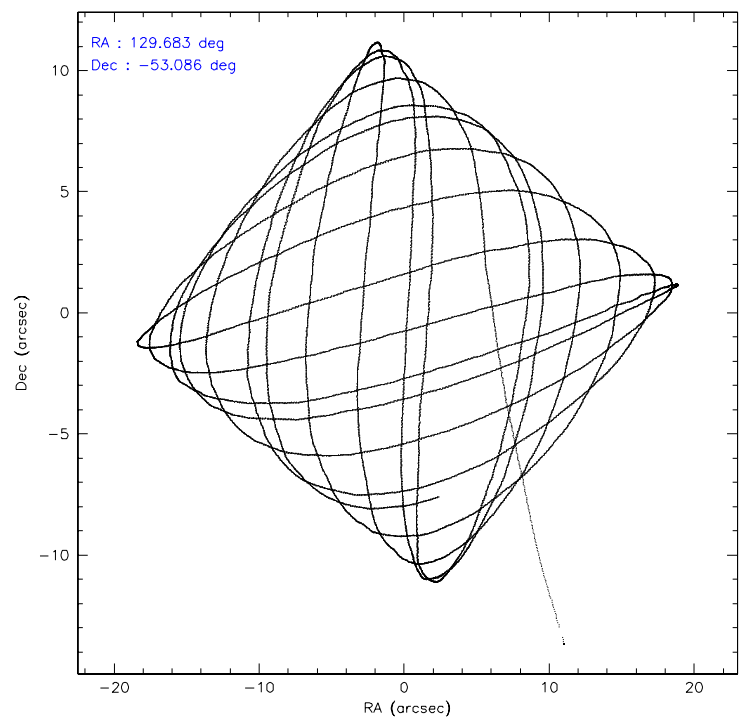
	ccd 0	ccd 1	ccd 2	ccd 3	ccd 6	ccd 7
level 1 events	48919	49567	51322	52298	55306	71228
rejected events	42814	43547	45548	46415	49538	47389
rejected %	87%	87%	88%	88%	89%	66%

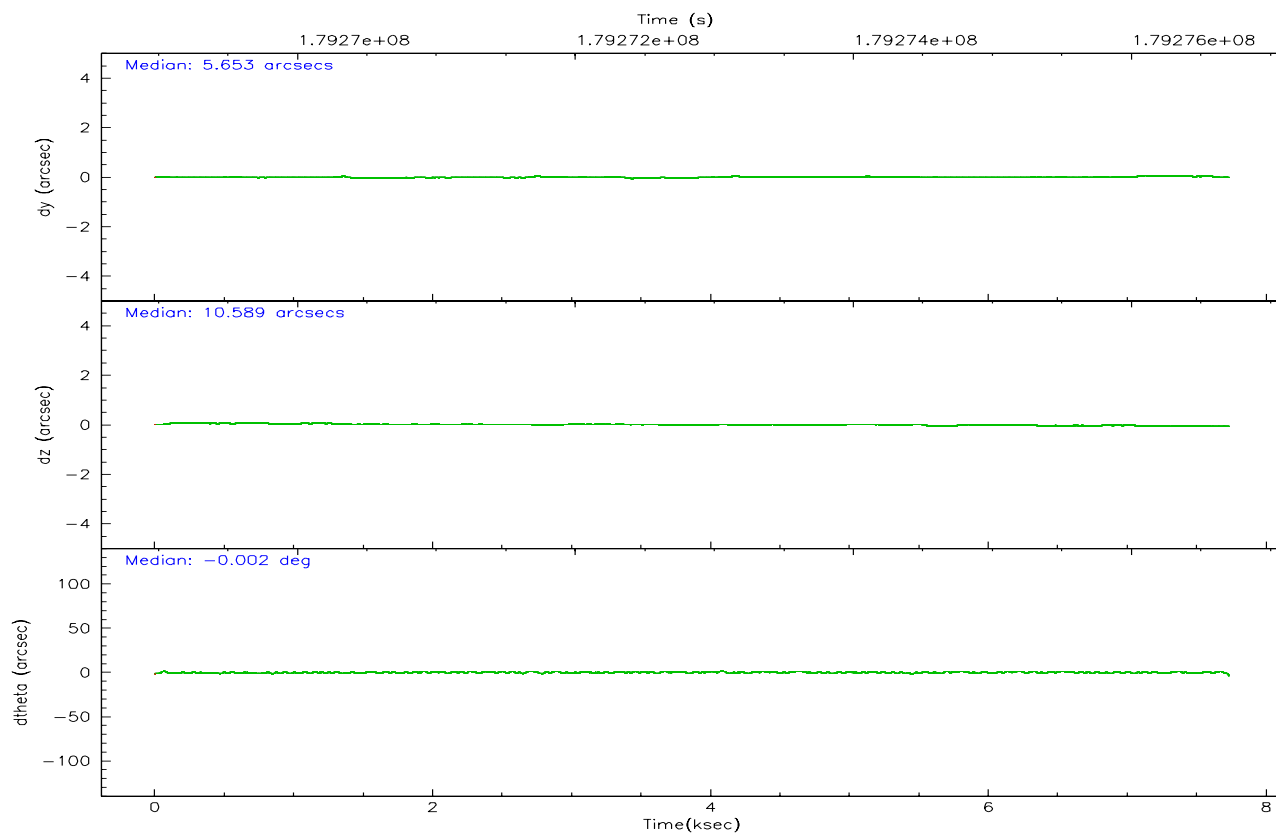
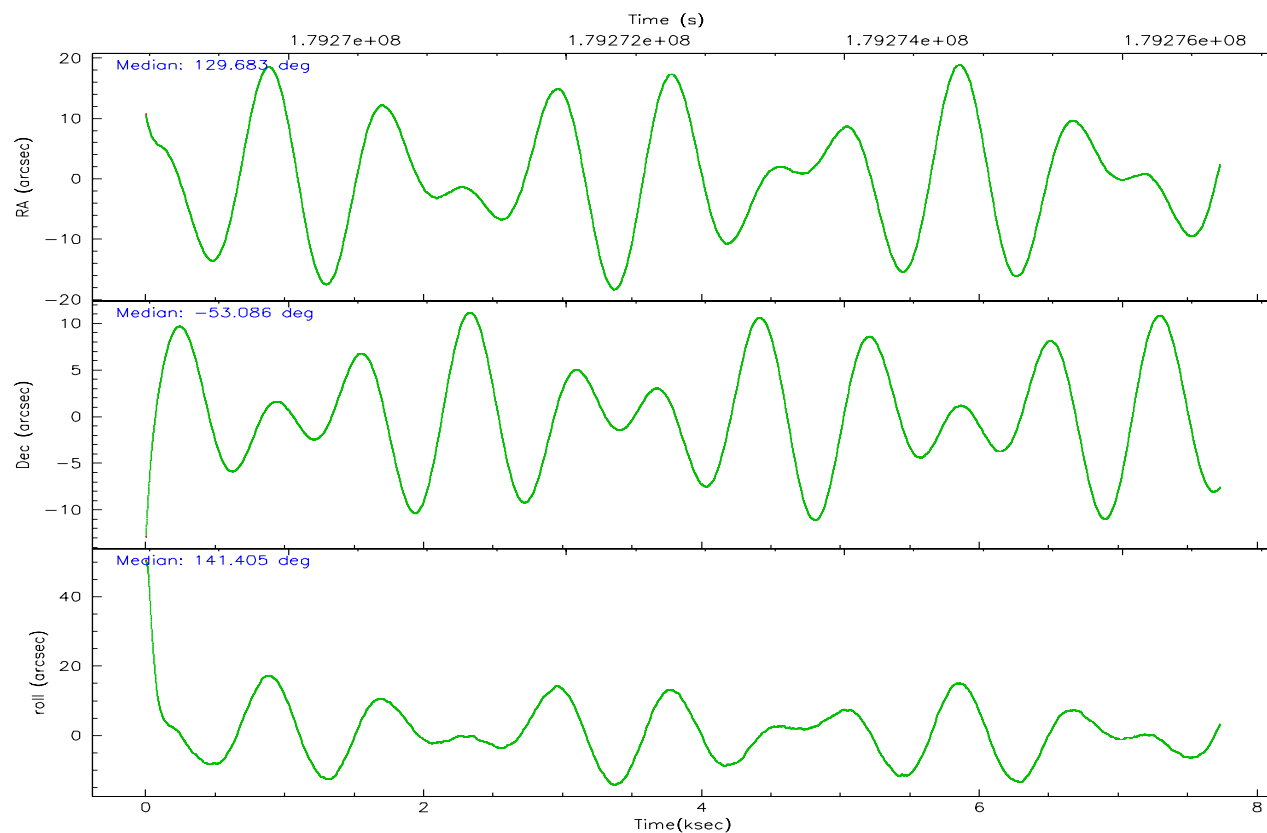
	ccd 0	ccd 1	ccd 2	ccd 3	ccd 6	ccd 7
grade 0 events	3085	2599	3005	2995	2564	1437
	6%	5%	5%	5%	4%	2%
grade 1 events	28	25	42	39	24	45
	0%	0%	0%	0%	0%	0%
grade 2 events	1393	1386	1191	1194	1318	6453
	2%	2%	2%	2%	2%	9%
grade 3 events	649	671	602	614	643	1331
	1%	1%	1%	1%	1%	1%
grade 4 events	548	700	584	666	616	1289
	1%	1%	1%	1%	1%	1%
grade 5 events	2061	2278	2111	2308	2497	4705
	4%	4%	4%	4%	4%	6%
grade 6 events	1111	1332	1048	1053	1307	16094
	2%	2%	2%	2%	2%	22%
grade 7 events	40044	40576	42739	43429	46337	39874
	81%	81%	83%	83%	83%	55%

## 2.2 Compared Parameters

Parameter	Planned	Actual	Parameter	Planned	Actual
Instrument	ACIS	ACIS	Obspar format version number	6	6
Detector	ACIS-012367	ACIS-012367	Obspar file type	PREDICTED	ACTUAL
Grating	NONE	NONE	Obspar update status	NONE	UPDATED
Data mode	FAINT	FAINT	On-chip summing requested	N	N
Observation mode	POINTING	POINTING	Subarray requested	NONE	NONE
Pointing RA	129.728106	129.6829264989883	Alternating exposures requested	N	N
Pointing Dec	-53.090289	-53.08628491082995	Primary exposure time	0.000000	3.2
Pointing Roll	141.240888	141.4135213621595			
SIM focus pos (mm)	-0.782348	-0.7809083437167272			
SIM defocus (mm)	0	0.001439871863259334			
SIM translation stage pos (mm)	-233.592463	-233.5874344608287			
SIM translation stage offset (mm)	0	-0.005018542100998502			
Observation start time	179269110.184000	179267630.27716			
Observation start date	2003-09-06T20:57:26	2003-09-06T20:33:50			
Observation end time	179276710.184000	179277614.80259			
Observation end date	2003-09-06T23:04:06	2003-09-06T23:20:14			
Read mode	TIMED	TIMED			

## 2.3 Aspect





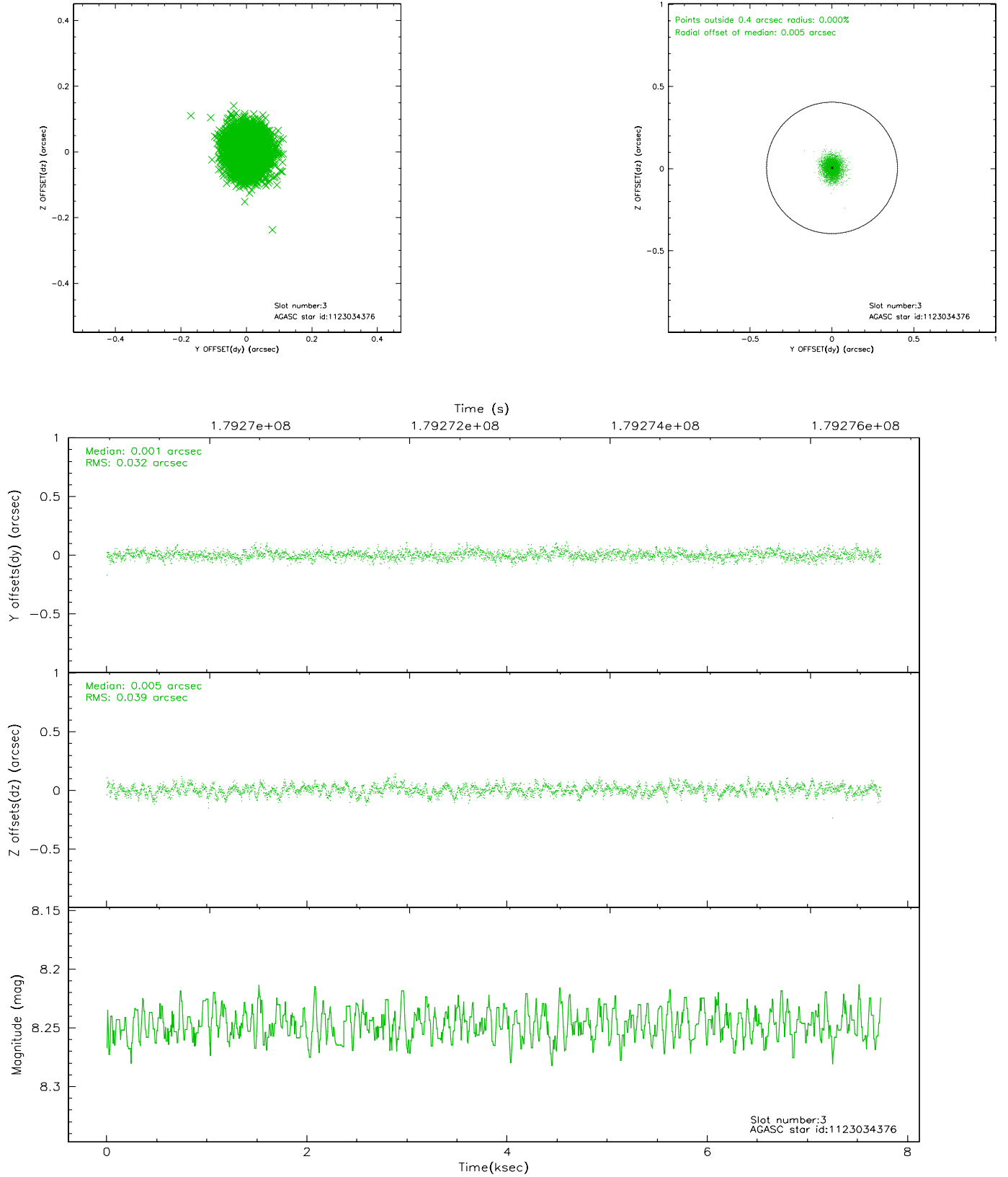
### Slot Statistics

slot	status	id	mag	n_pts	med_dy	med_dz	dr1	dr2	ra	dec	mean_y	mean_z
0	FID	ACIS-I-4	7.17	1887	-0.016	0.048	0.007	0.012	0.000000	0.000000	2154.01	1065.84
1	FID	ACIS-I-5	7.23	1887	-0.108	0.031	0.005	0.009	0.000000	0.000000	-1813.09	1064.09
2	FID	ACIS-I-6	7.25	1887	0.024	-0.012	0.008	0.013	0.000000	0.000000	398.85	1708.36
3	GUIDE	1123034376	8.25	3773	0.001	0.005	0.054	0.088	129.294127	-53.259309	345.95	1061.88
4	GUIDE	1123040008	8.07	3773	0.023	-0.050	0.077	0.126	129.599630	-53.721774	-1210.13	1944.37
5	GUIDE	1123049840	7.32	3773	-0.025	-0.026	0.049	0.088	128.539940	-53.071509	2032.33	1573.63
6	GUIDE	1123167992	9.37	3771	-0.089	0.058	0.085	0.142	130.637273	-53.029407	-1404.92	-1393.15
7	GUIDE	1069964528	8.78	3768	0.083	0.014	0.085	0.139	129.621473	-52.201002	2187.70	-2349.05

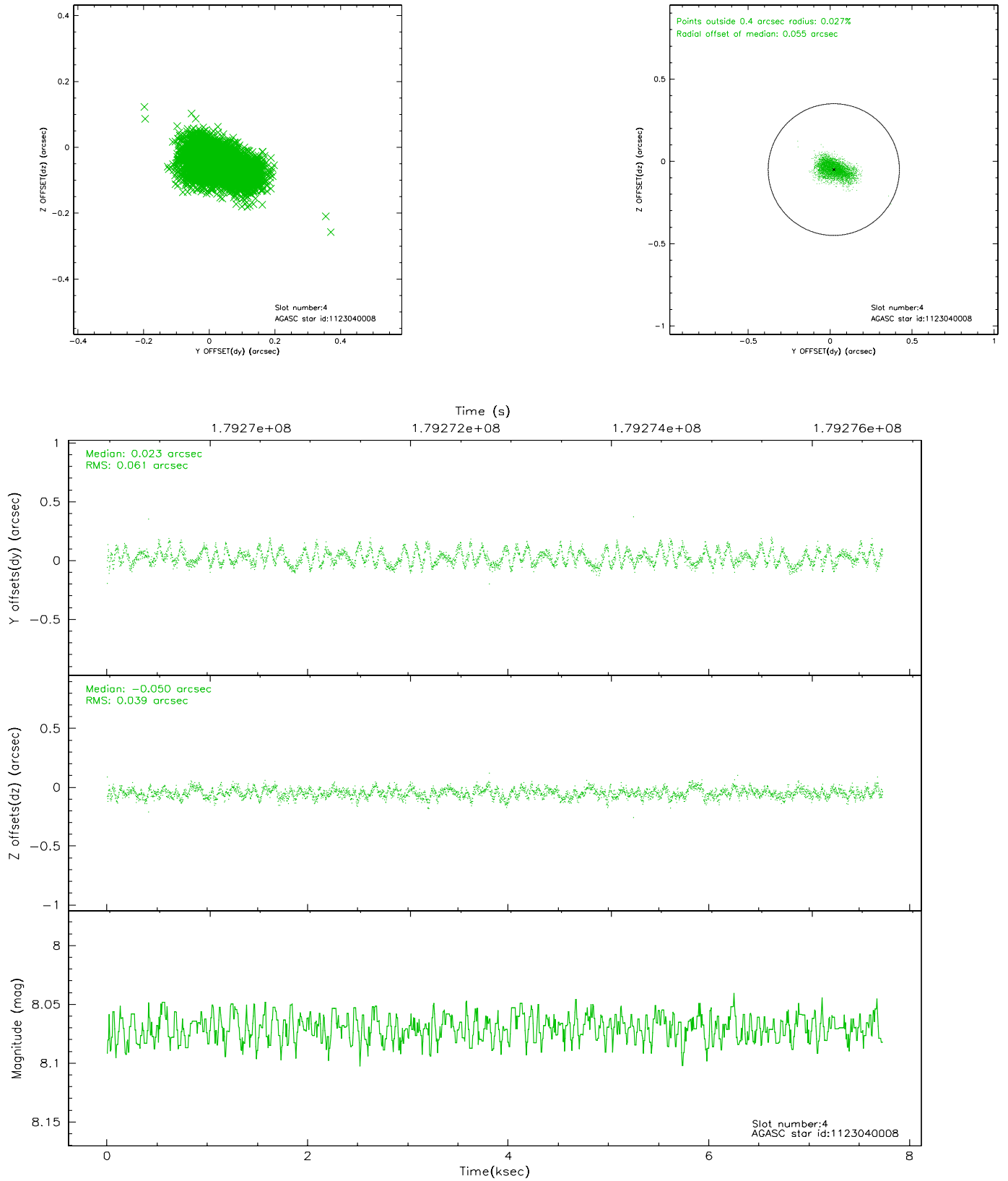


## 2.4 Star Slots

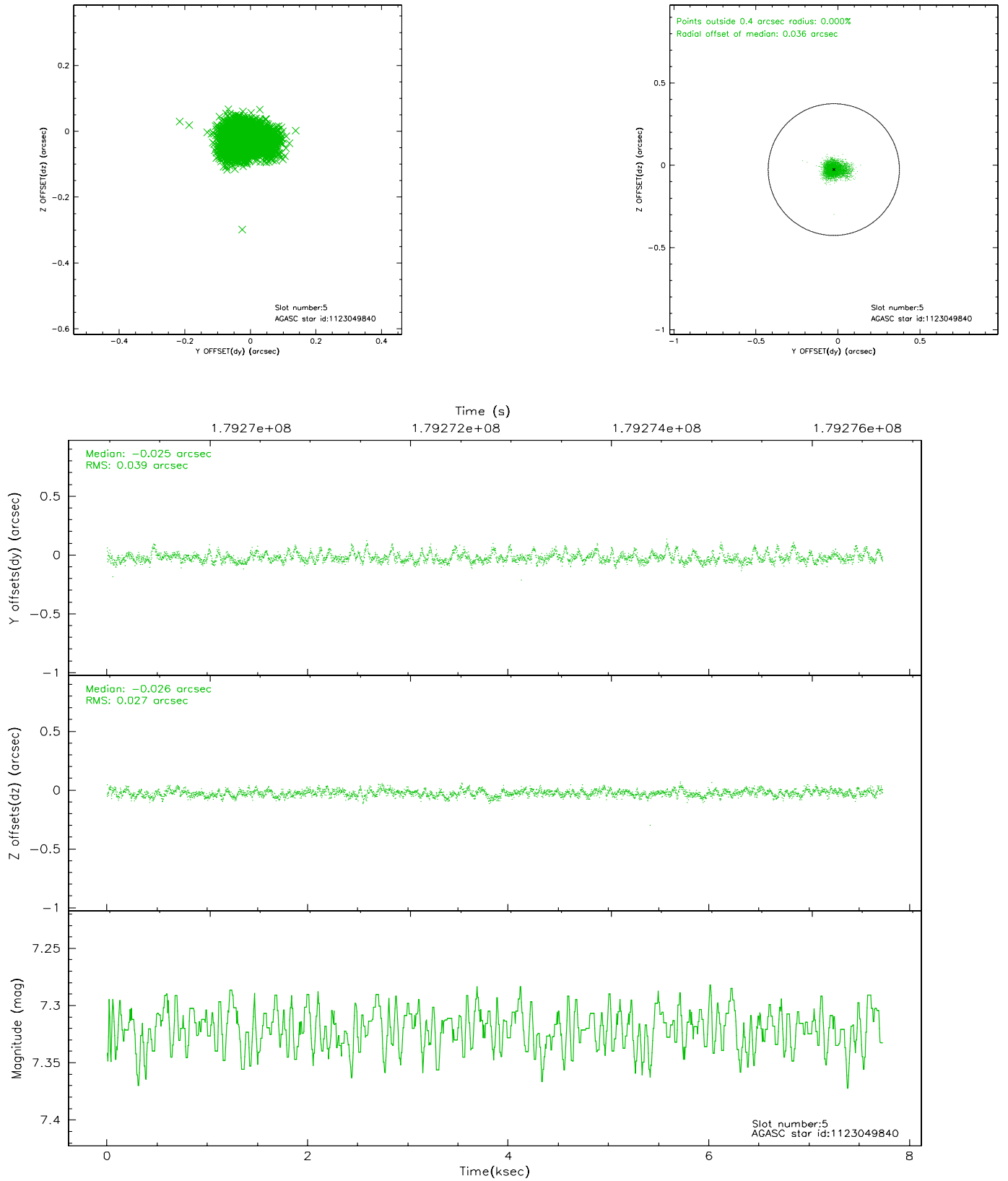
### 2.4.1 Slot 3



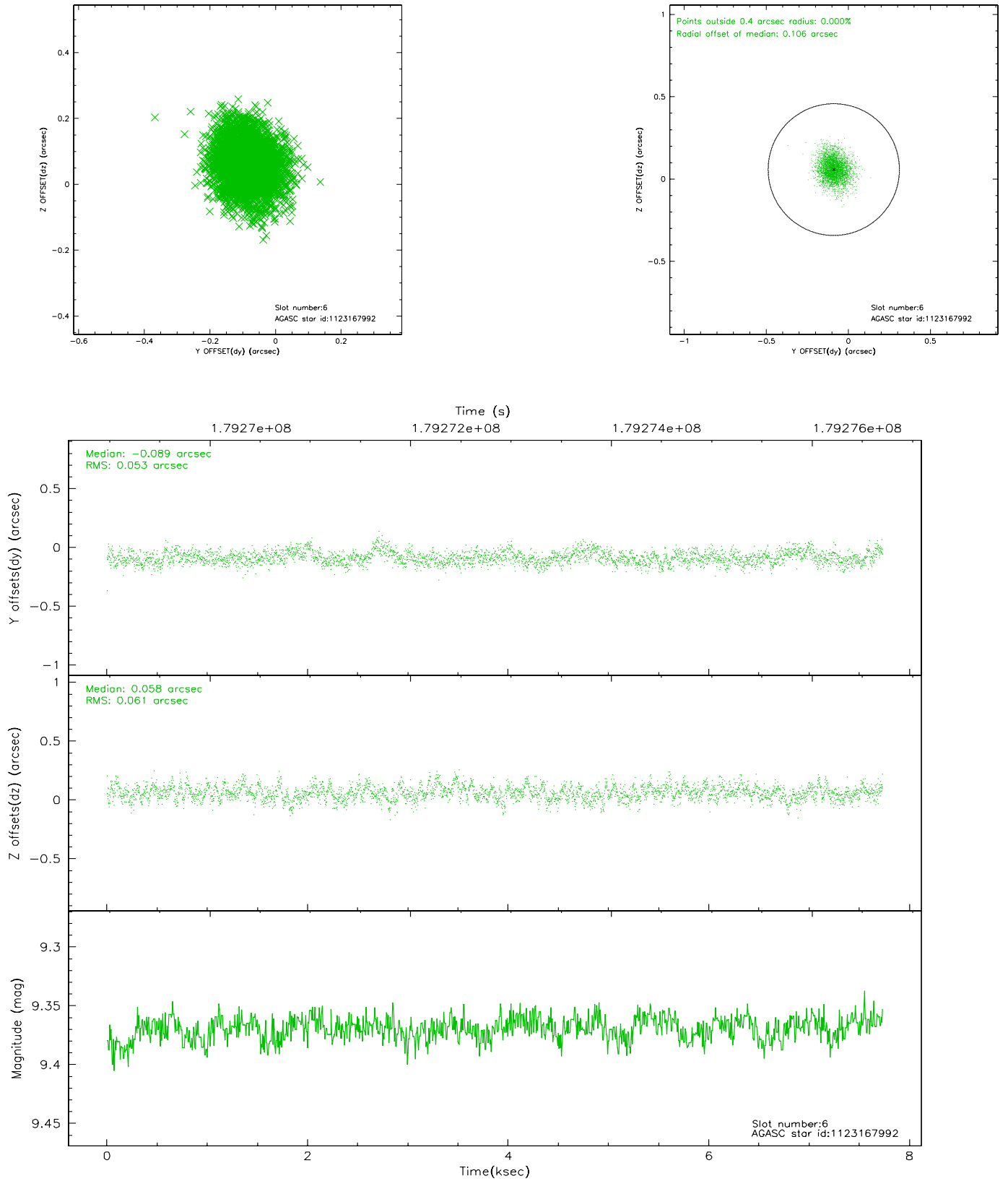
## 2.4.2 Slot 4



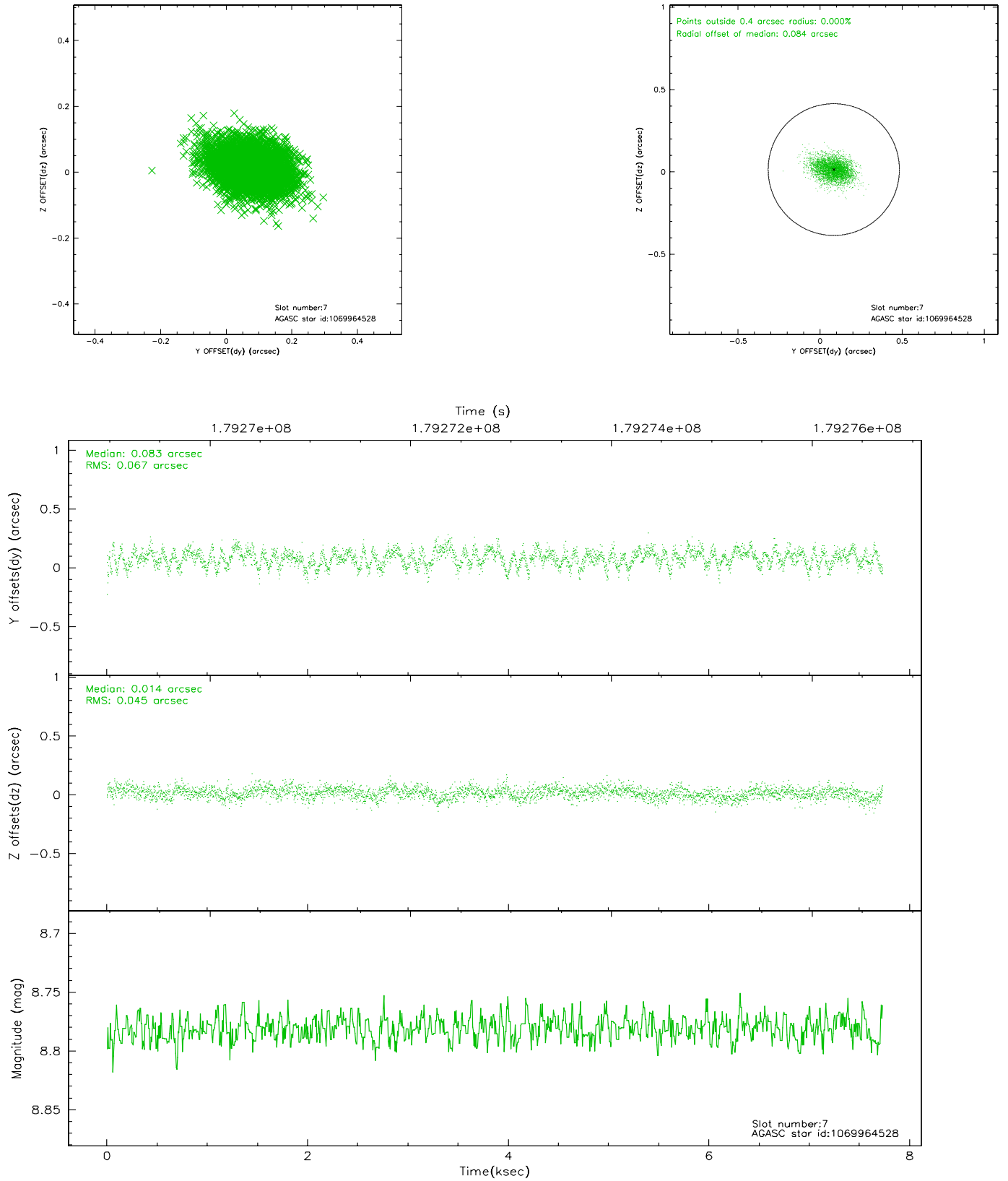
### 2.4.3 Slot 5



## 2.4.4 Slot 6

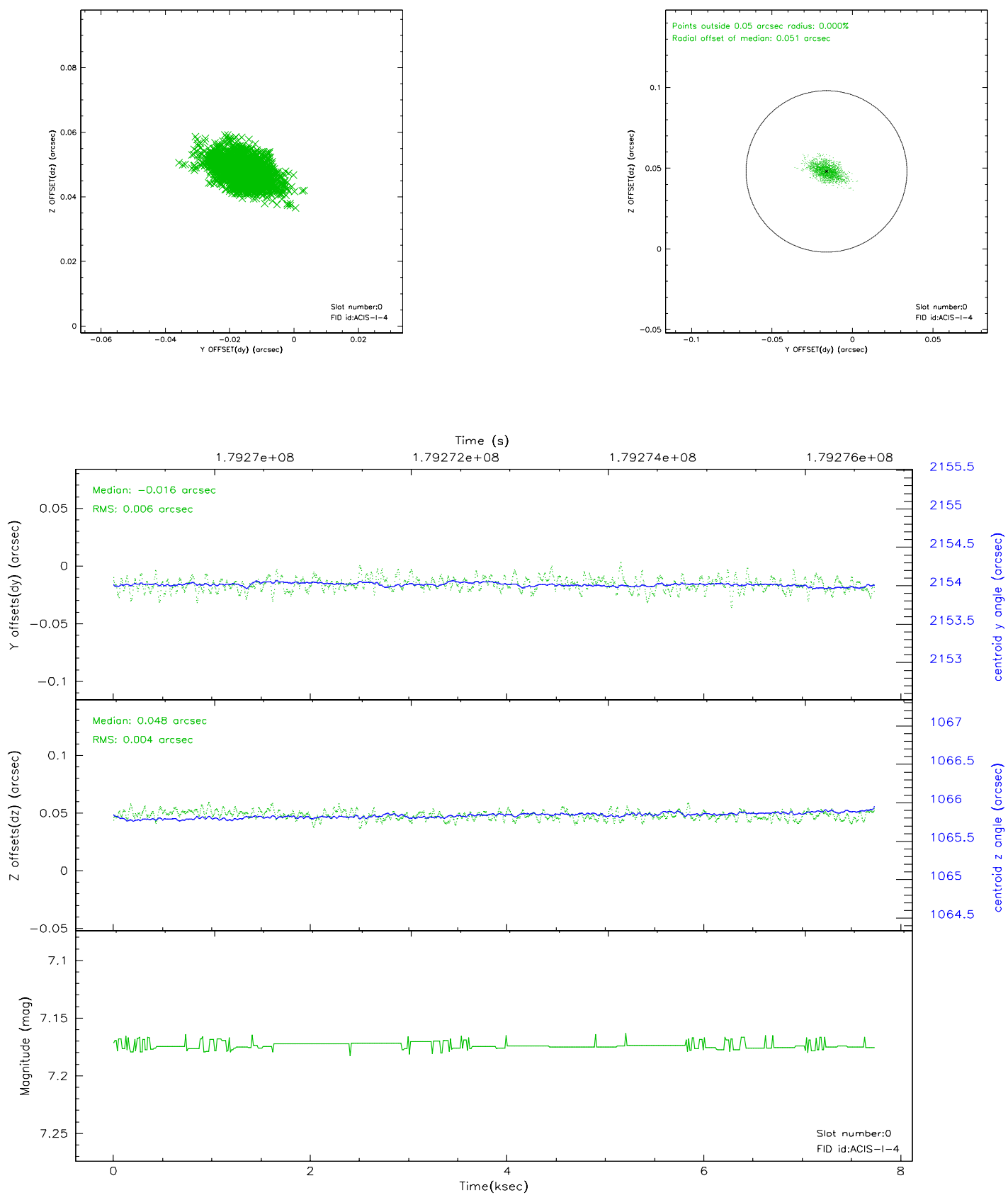


## 2.4.5 Slot 7

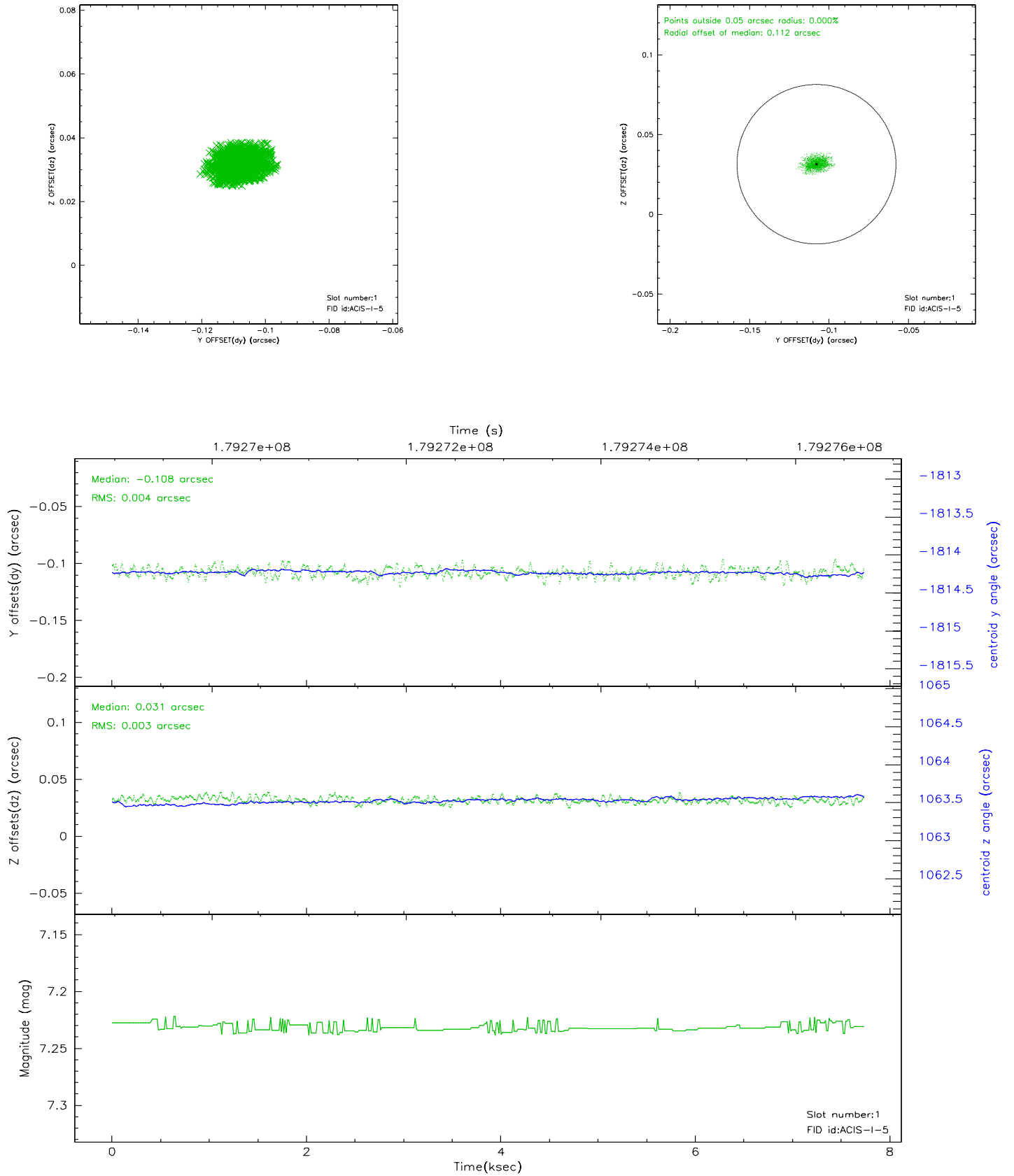


## 2.5 FID Slots

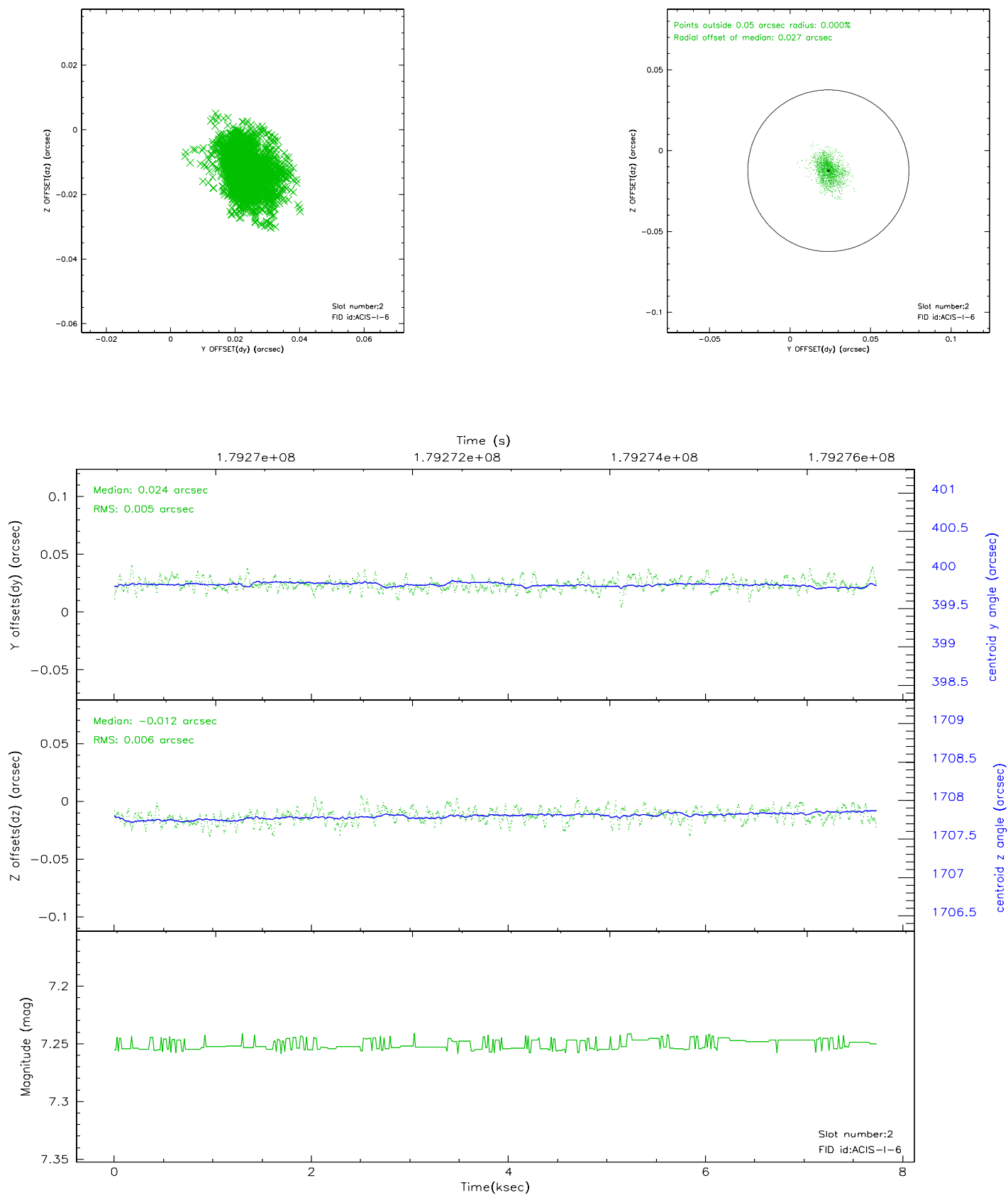
### 2.5.1 Slot 0



## 2.5.2 Slot 1

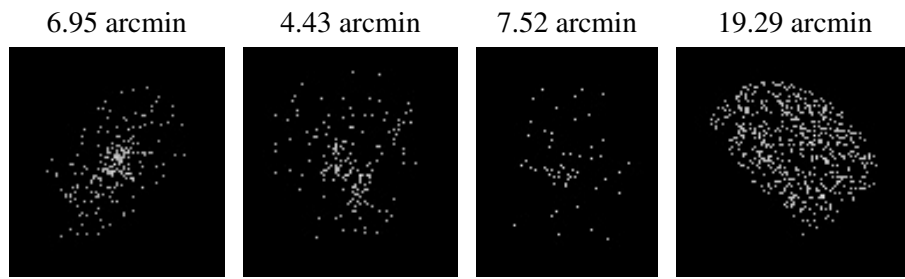


### 2.5.3 Slot 2





### 3 Point Sources



## A Summary

### A.1 Status

V&V Scientist	Joy Nichols
V&V Date (YYYY-MM-DD)	2006.07.06
V&V Edition	1
V&V Disposition and Status	OK
V&V Charge Time	7.727

### A.2 Comments