

V&V Reference Report

L2 ASCDS Version : 7.6.8

Observation 3640 - L2 Version 001
Chandra X-Ray Center

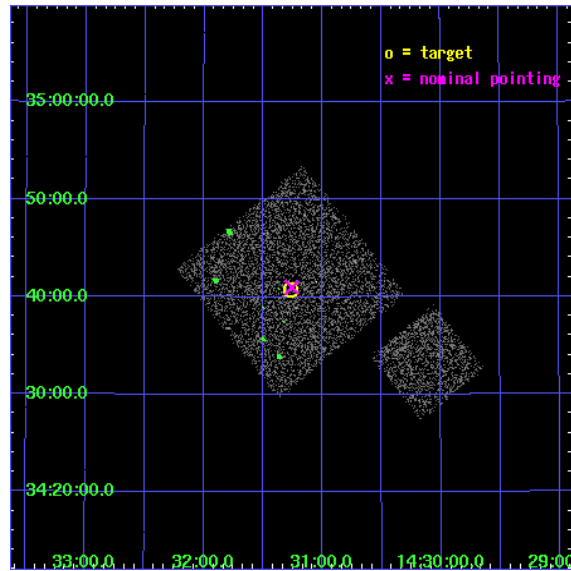
L2 Processing Date : Jul 29 2006

Contents

1	Front	2
2	OBI	3
2.1	OBI	3
2.1.1	Images	3
2.1.2	Bias	3
2.1.3	Parameters	4
2.1.4	Events	4
2.2	Compared Parameters	5
2.3	Aspect	6
2.4	Star Slots	9
2.4.1	Slot 3	9
2.4.2	Slot 4	10
2.4.3	Slot 5	11
2.4.4	Slot 6	12
2.4.5	Slot 7	13
2.5	FID Slots	14
2.5.1	Slot 0	14
2.5.2	Slot 1	15
2.5.3	Slot 2	16
3	Point Sources	17
A	Summary	18
A.1	Status	18
A.2	Comments	18

1 Front

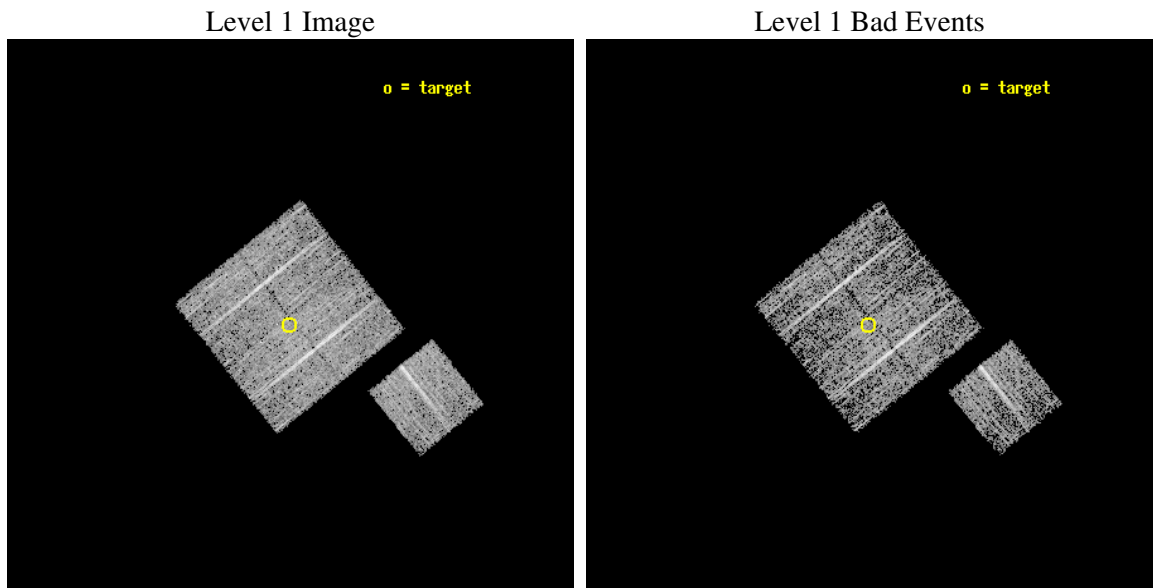
seq_num	900240
obs_id	3640
title	CHANDRA LARGE SCALE SURVEY OF THE NOAO BOOTES DEEP FIELD
observer	Dr. Stephen Murray
object	NOAO FIELD F41
dtcycle	0
cycle	P
ra_targ	217.816997
dec_targ	34.679082
ra_nom	217.81435685618
dec_nom	34.683113625116
roll_nom	141.0101604901
revision	3
ontime	4674.7999910116
livetime	4613.7202875914
ontime0	4668.5180006027
ontime1	4674.7999910116
ontime2	4674.7999910116
ontime3	4674.7999910116
ontime6	4674.7999910116
l2events	9431



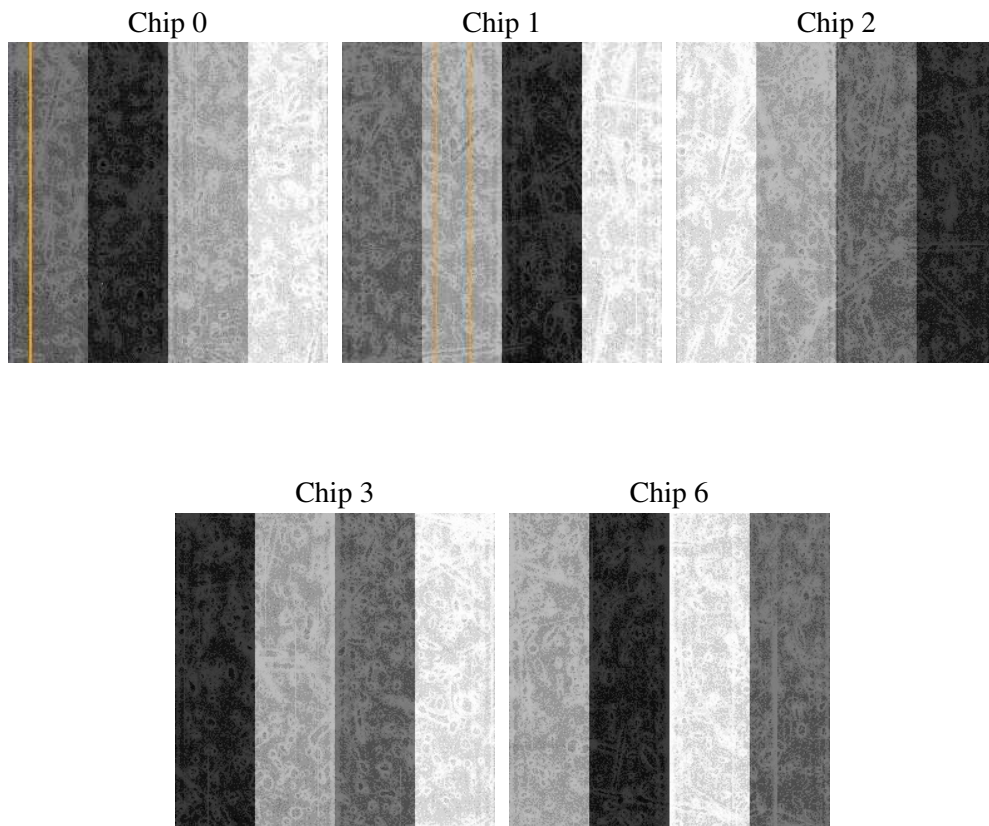
2 OBI

2.1 OBI

2.1.1 Images



2.1.2 Bias



2.1.3 Parameters

obi_num	1
ascdsver	7.6.8
caldbver	3.2.2
date	2006-07-29T20:41:38
revision	3

sched_exp_time	4900.000000
ontime	4680.1052873135
ontime0	4673.8232969046
ontime1	4680.1052873135
ontime2	4680.1052873135
ontime3	4680.1052873135
ontime6	4680.1052873135
llevents	115191

2.1.4 Events

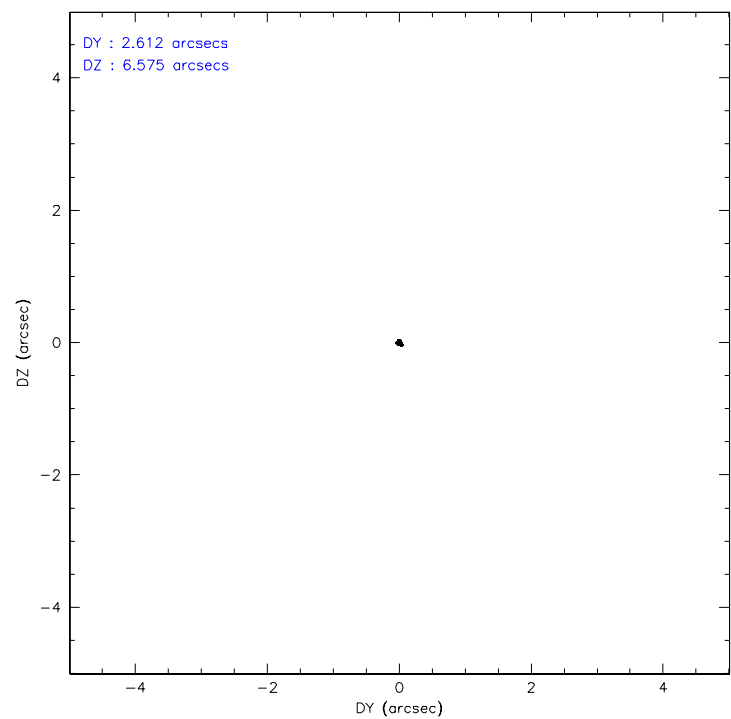
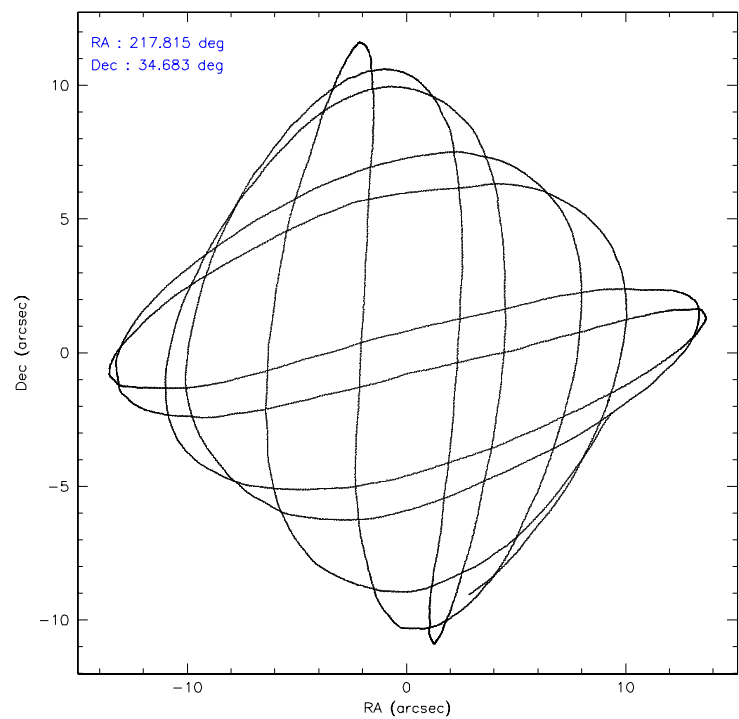
	ccd 0	ccd 1	ccd 2	ccd 3	ccd 6
level 1 events	21951	21777	23903	24210	23350
rejected events	19725	19365	21681	21915	21094
rejected %	89%	88%	90%	90%	90%

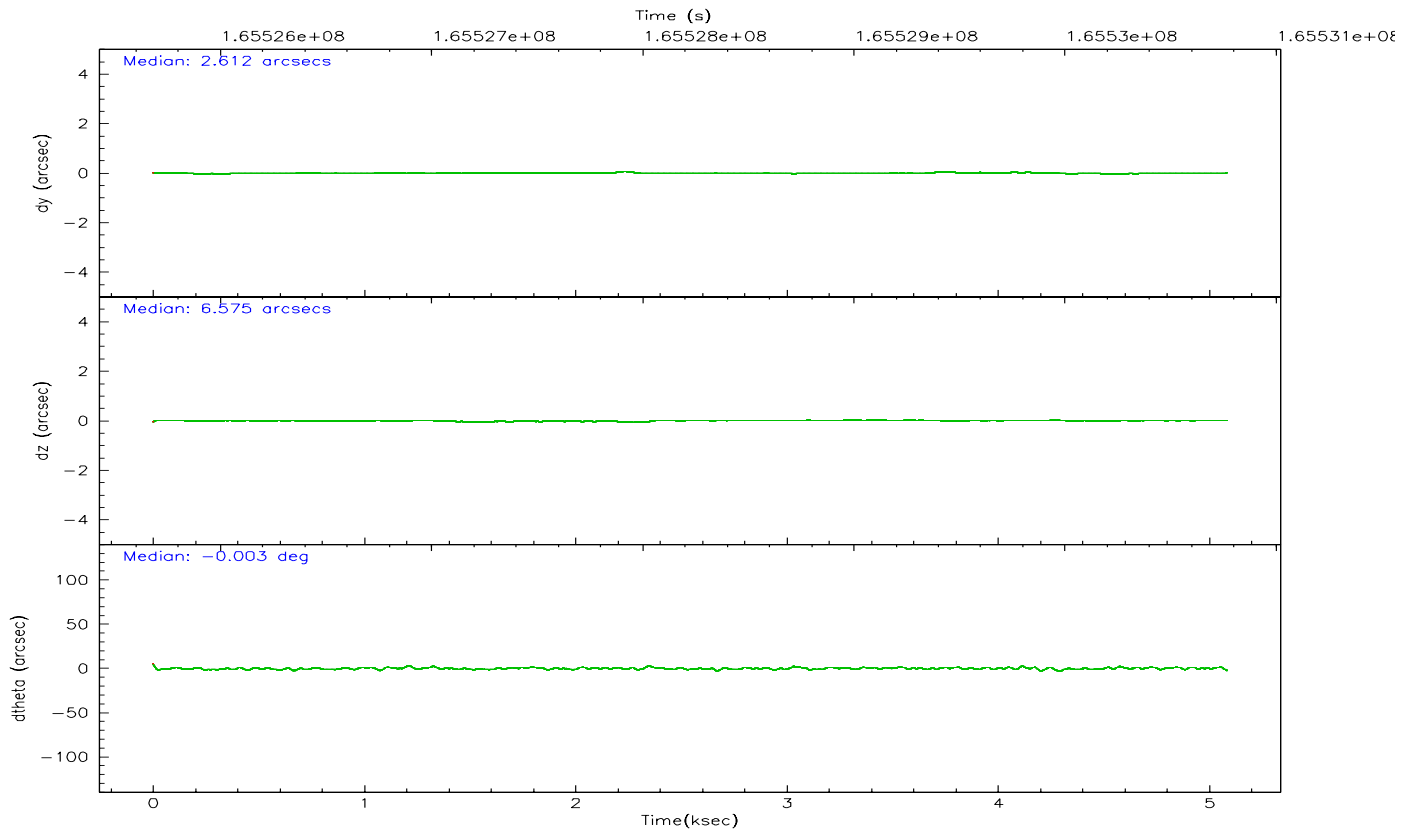
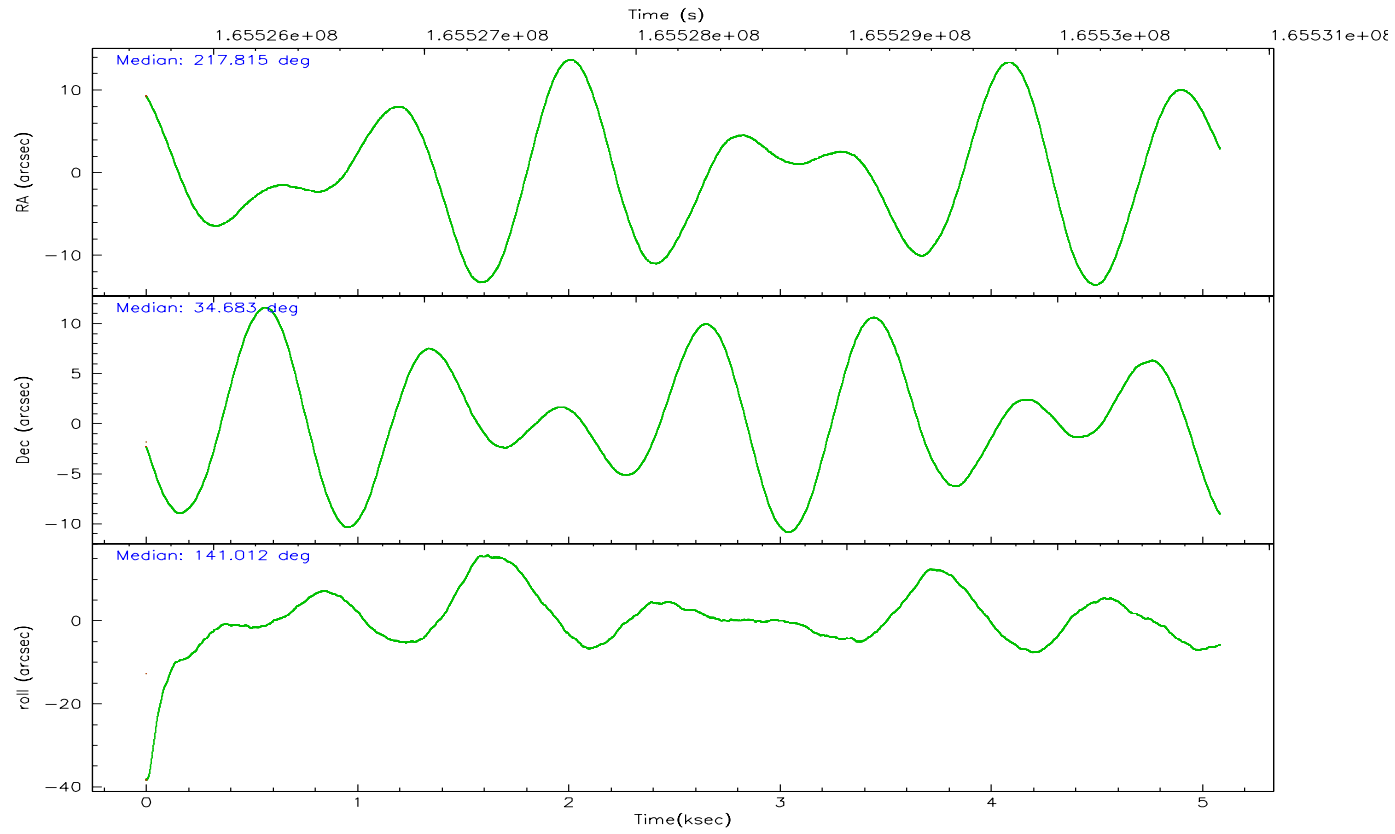
	ccd 0	ccd 1	ccd 2	ccd 3	ccd 6
grade 0 events	824	870	843	954	825
	3%	3%	3%	3%	3%
grade 1 events	13	7	6	11	14
	0%	0%	0%	0%	0%
grade 2 events	498	512	483	438	479
	2%	2%	2%	1%	2%
grade 3 events	269	276	279	244	241
	1%	1%	1%	1%	1%
grade 4 events	243	280	262	240	279
	1%	1%	1%	0%	1%
grade 5 events	691	702	632	710	699
	3%	3%	2%	2%	2%
grade 6 events	394	474	355	420	435
	1%	2%	1%	1%	1%
grade 7 events	19019	18656	21043	21193	20378
	86%	85%	88%	87%	87%

2.2 Compared Parameters

Parameter	Planned	Actual	Parameter	Planned	Actual
Instrument	ACIS	ACIS	Obspar format version number	6	6
Detector	ACIS-01236	ACIS-01236	Obspar file type	PREDICTED	ACTUAL
Grating	NONE	NONE	Obspar update status	NONE	UPDATED
Data mode	VFAINT	VFAINT	On-chip summing requested	N	N
Observation mode	POINTING	POINTING	Subarray requested	NONE	NONE
Pointing RA	217.847256	217.8143568561811	Alternating exposures requested	N	N
Pointing Dec	34.679002	34.68311362511561	Primary exposure time	0.000000	3.1
Pointing Roll	140.782787	141.0101604900964			
SIM focus pos (mm)	-0.782348	-0.7809083437167272			
SIM defocus (mm)	0	0.001439871863259334			
SIM translation stage pos (mm)	-233.592463	-233.5874344608287			
SIM translation stage offset (mm)	0	-0.005018542100998502			
Observation start time	165525864.184000	165525488.00563			
Observation start date	2003-03-31T19:23:20	2003-03-31T19:18:08			
Observation end time	165530764.184000	165530897.95586			
Observation end date	2003-03-31T20:45:00	2003-03-31T20:48:17			
Read mode	TIMED	TIMED			

2.3 Aspect



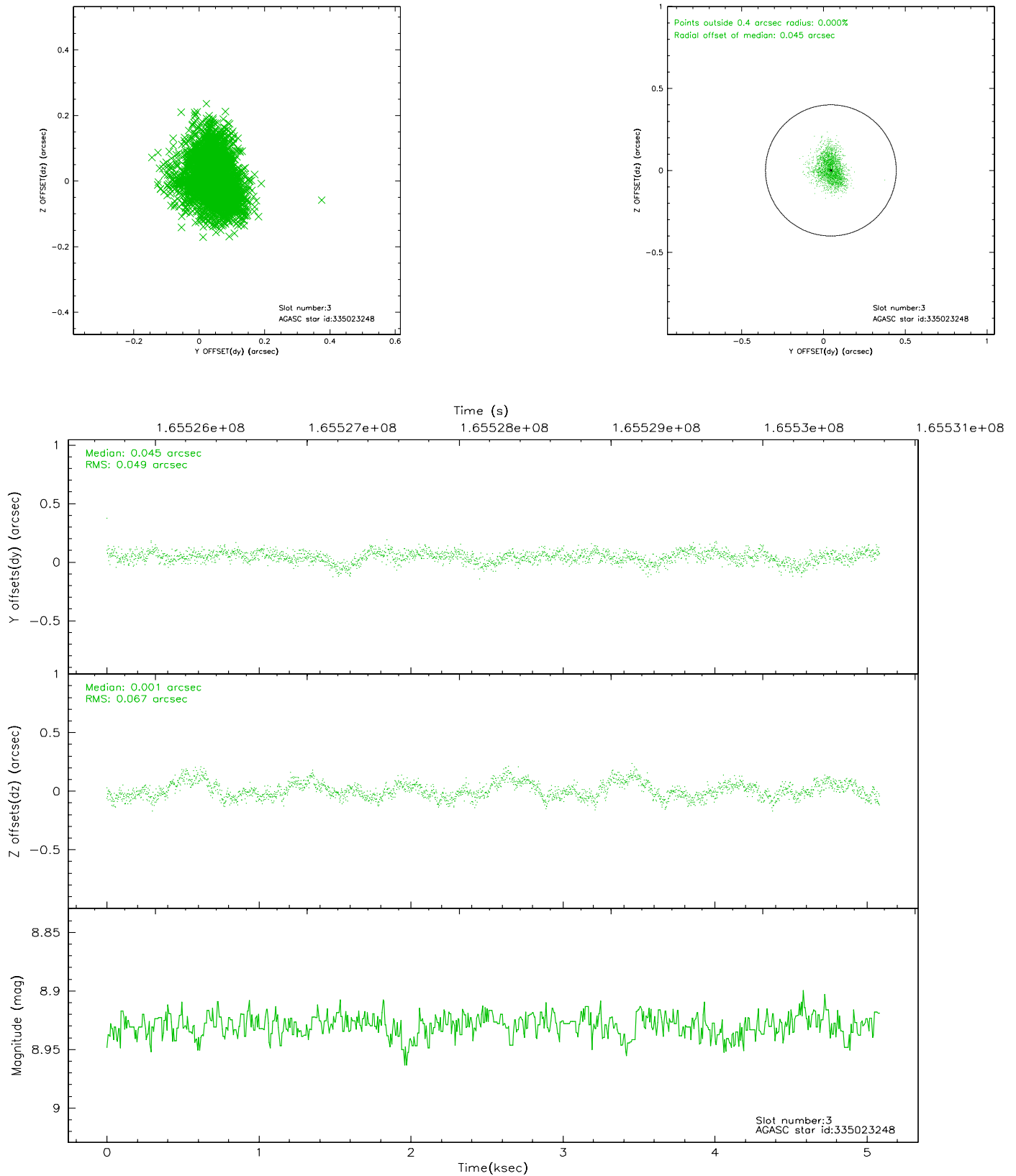


Slot Statistics

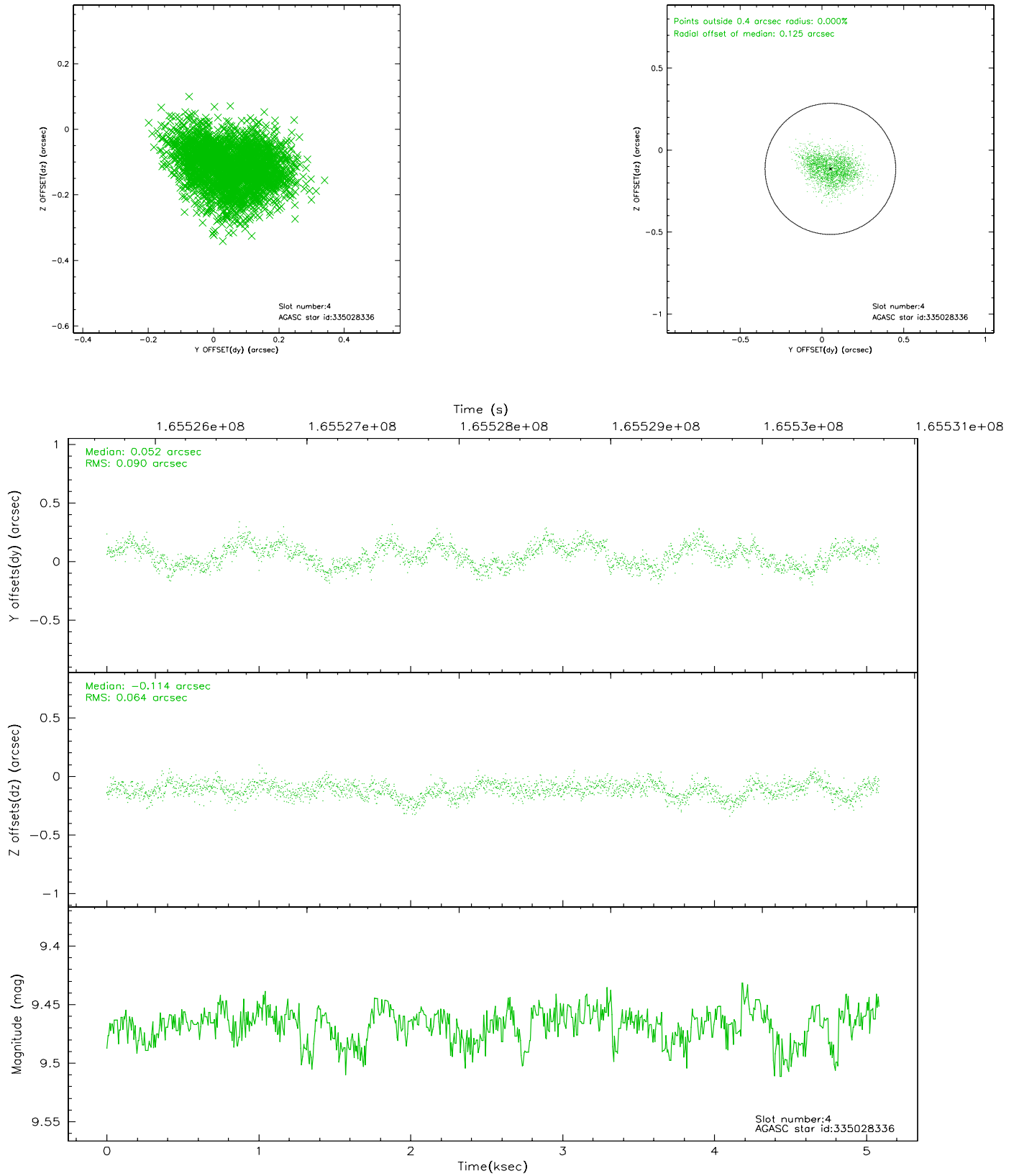
slot	status	id	mag	n_pts	med_dy	med_dz	dr1	dr2	ra	dec	mean_y	mean_z
0	FID	ACIS-I-1	7.25	1240	-0.101	0.027	0.008	0.015	0.000000	0.000000	937.11	-829.91
1	FID	ACIS-I-2	7.17	1240	-0.038	-0.030	0.006	0.010	0.000000	0.000000	-756.25	-837.03
2	FID	ACIS-I-4	7.18	1240	0.041	0.071	0.005	0.010	0.000000	0.000000	2156.56	1069.36
3	GUIDE	335023248	8.93	2479	0.045	0.001	0.088	0.143	217.634832	34.944512	1091.09	-344.88
4	GUIDE	335028336	9.47	2480	0.052	-0.114	0.119	0.186	217.189840	34.665629	1482.88	1262.70
5	GUIDE	335415168	9.74	2460	-0.144	-0.003	0.330	0.469	217.681296	35.301767	1797.05	-1428.50
6	GUIDE	335417968	9.40	2479	0.072	0.181	0.117	0.182	217.358149	35.055285	1976.83	-141.49
7	GUIDE	335023304	8.40	2478	-0.062	-0.056	0.111	0.159	218.883608	34.686545	-2348.38	-1973.14

2.4 Star Slots

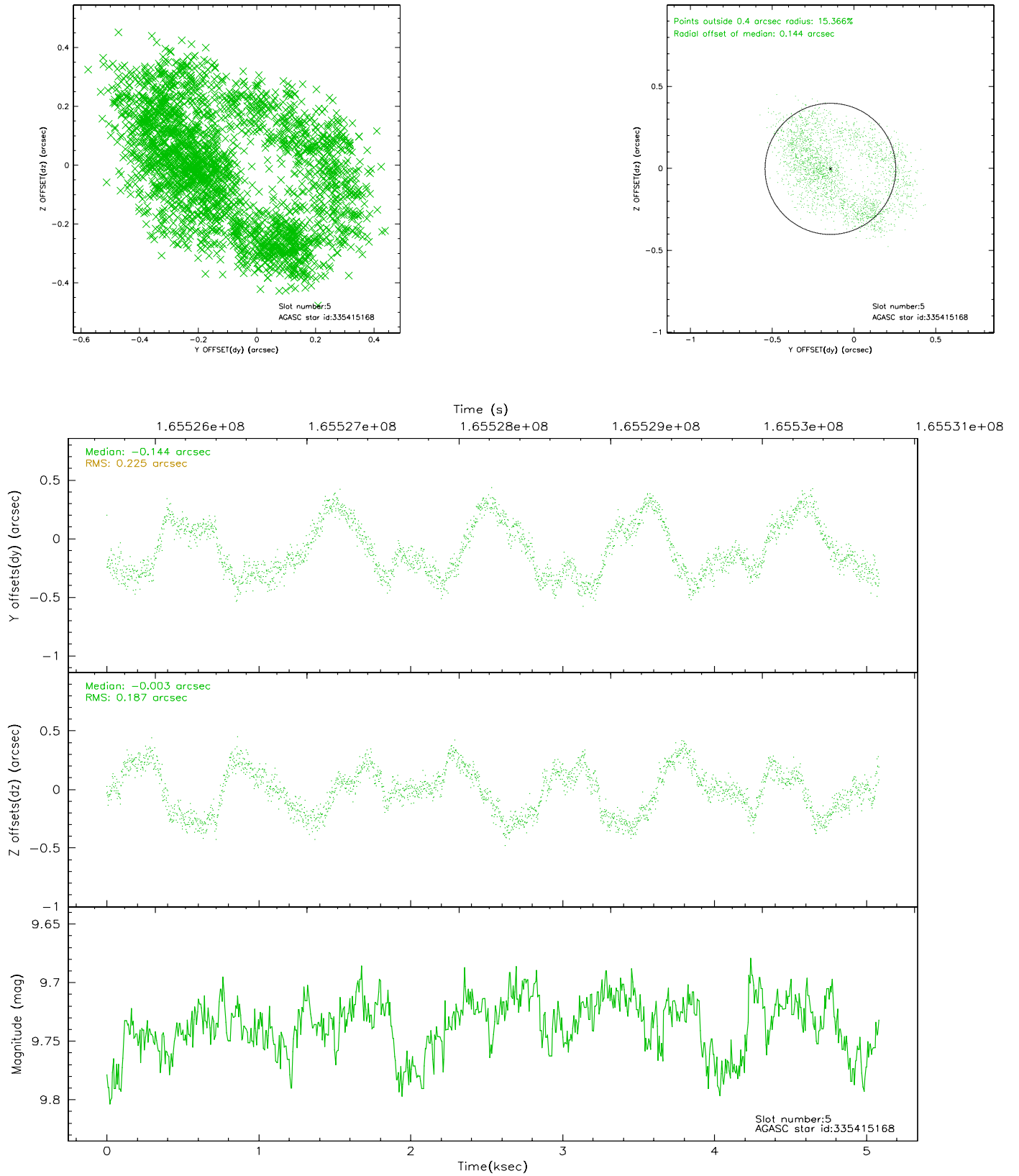
2.4.1 Slot 3



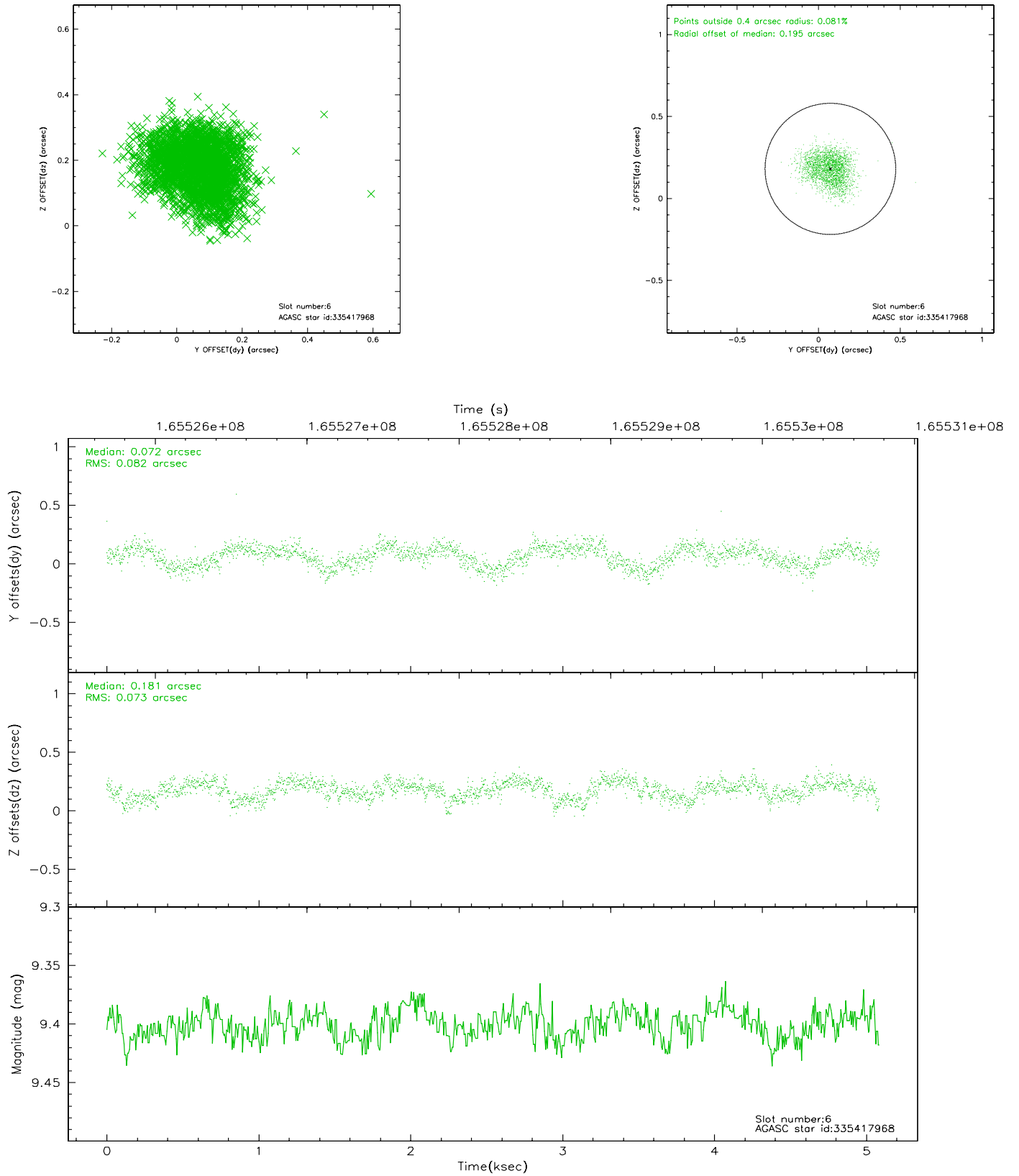
2.4.2 Slot 4



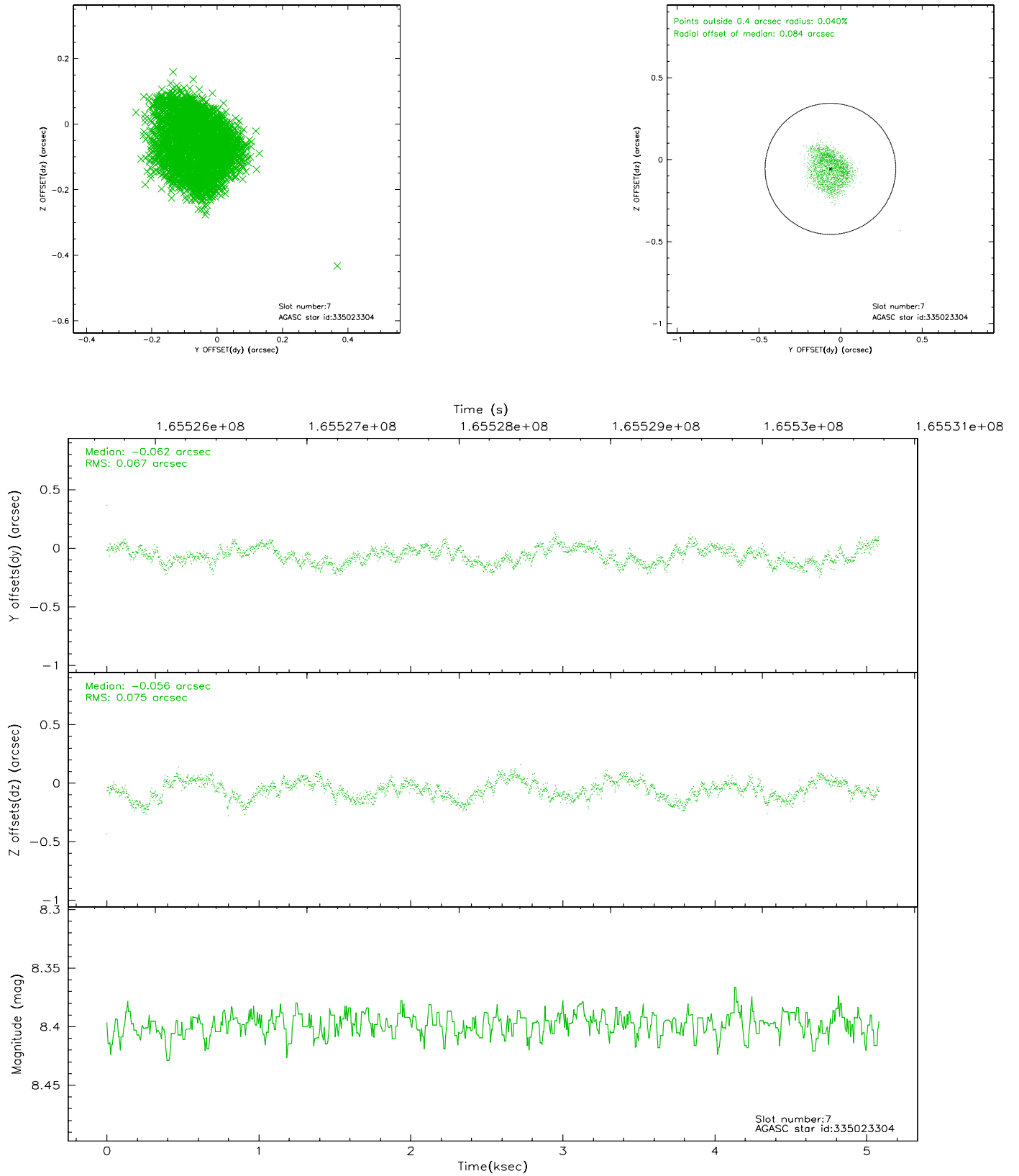
2.4.3 Slot 5



2.4.4 Slot 6

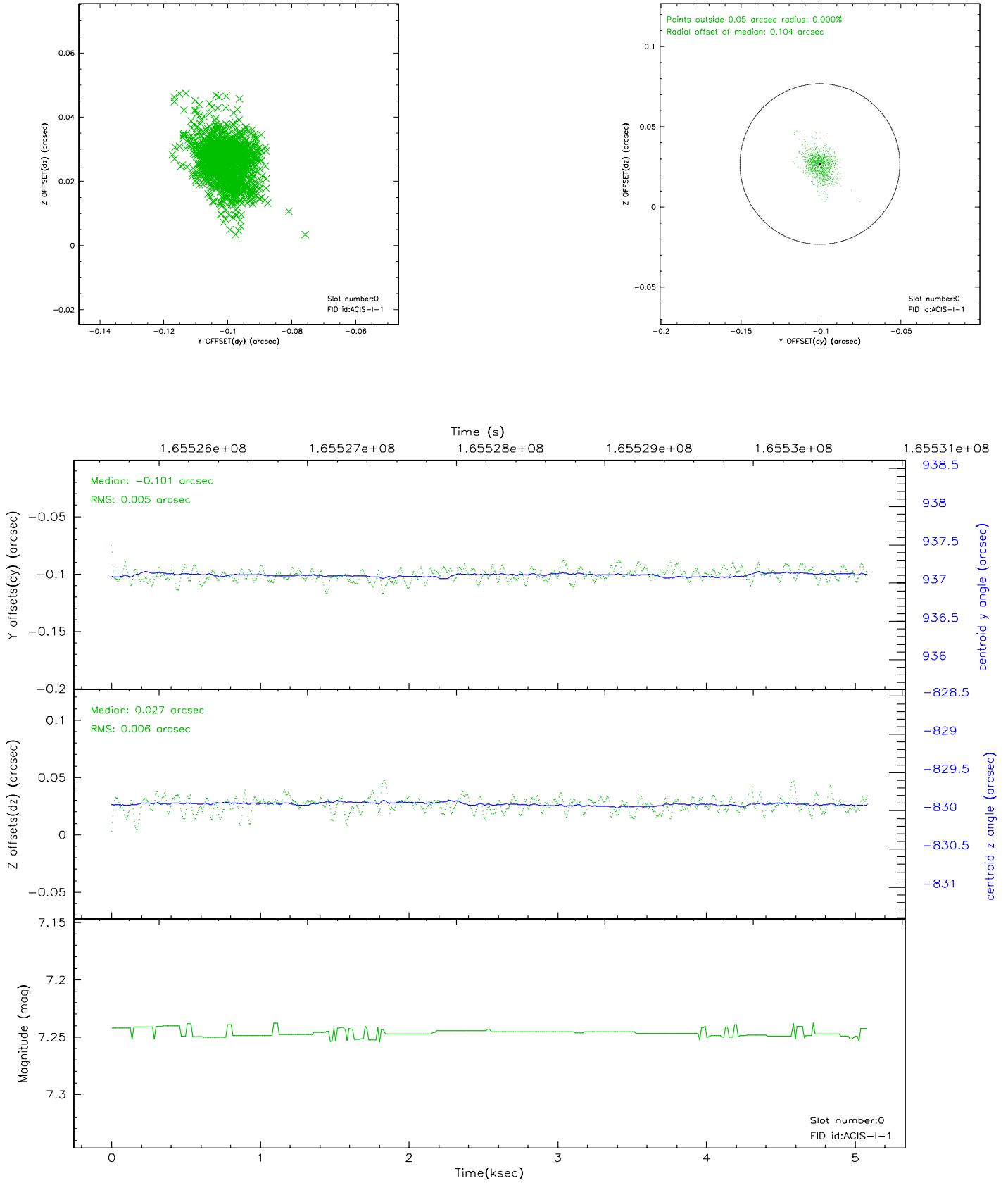


2.4.5 Slot 7

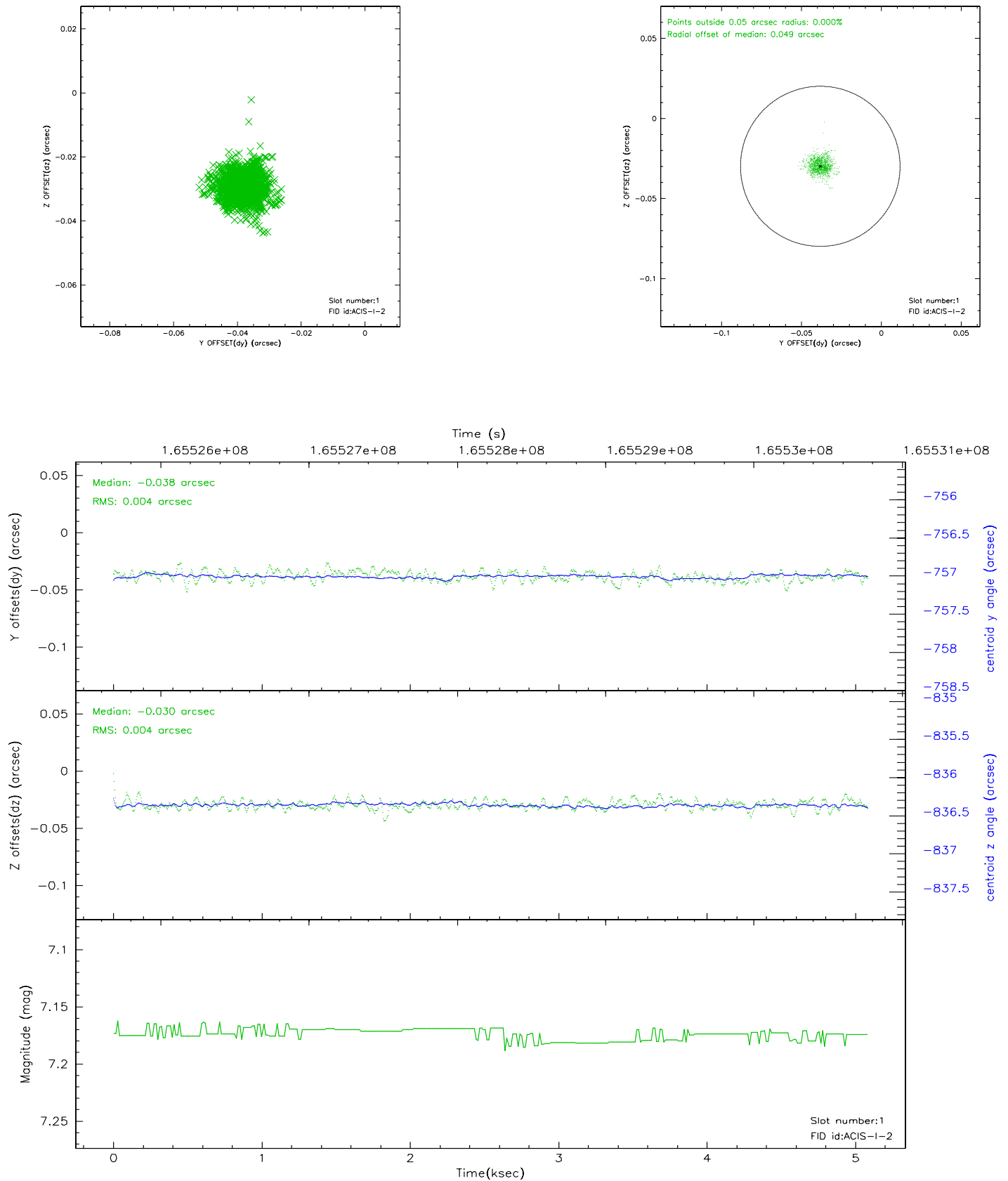


2.5 FID Slots

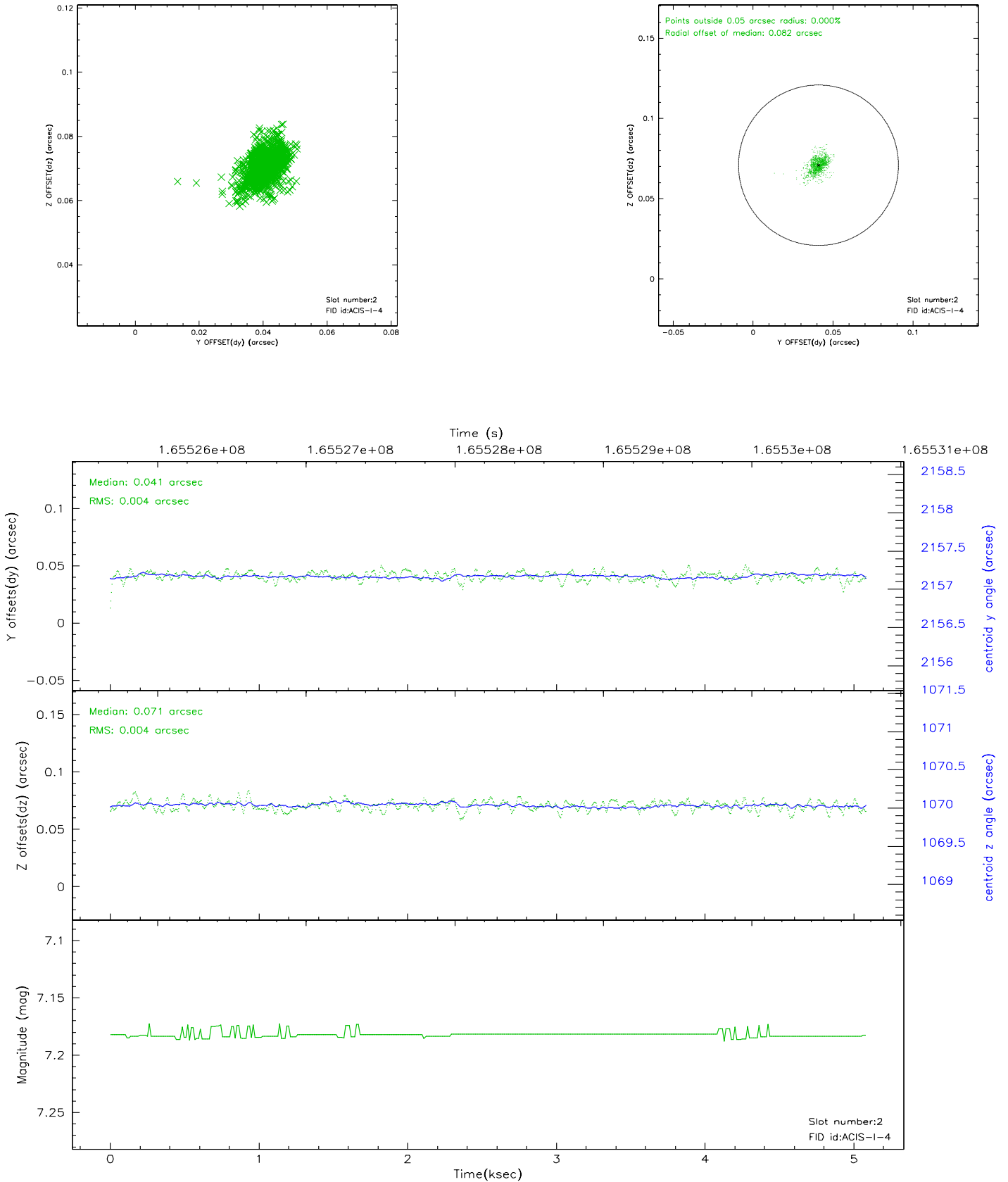
2.5.1 Slot 0



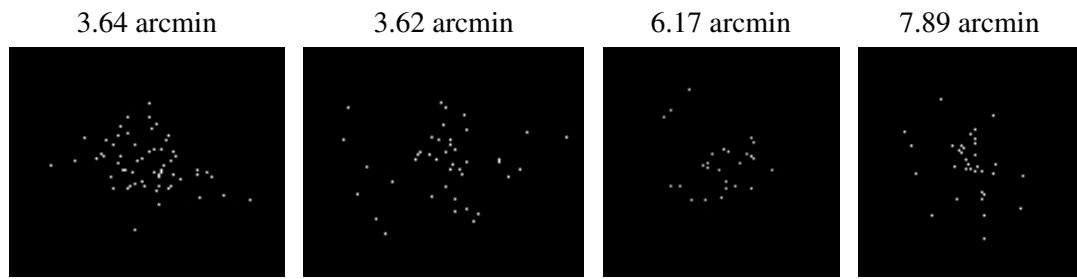
2.5.2 Slot 1



2.5.3 Slot 2



3 Point Sources



A Summary

A.1 Status

V&V Scientist	Jen Lauer
V&V Date (YYYY-MM-DD)	2006.07.30
V&V Edition	1
V&V Disposition and Status	OK
V&V Charge Time	4.674

A.2 Comments