

V&V Reference Report

L2 ASCDS Version : 8.4.5

Observation 3630 - L2 Version 3
Chandra X-Ray Center

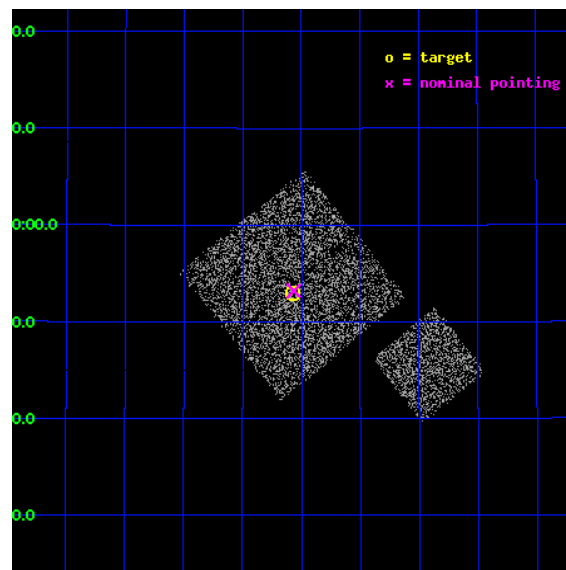
L2 Processing Date : Oct 25 2012

Contents

1	Front	2
2	OBI	3
2.1	OBI	3
2.1.1	Images	3
2.1.2	Bias	3
2.1.3	Parameters	4
2.1.4	Events	4
2.2	Compared Parameters	5
2.3	Aspect	6
2.4	Star Slots	9
2.4.1	Slot 3	9
2.4.2	Slot 4	10
2.4.3	Slot 5	11
2.4.4	Slot 6	12
2.4.5	Slot 7	13
2.5	FID Slots	14
2.5.1	Slot 0	14
2.5.2	Slot 1	15
2.5.3	Slot 2	16
A	Summary	17
A.1	Status	17
A.2	Comments	17

1 Front

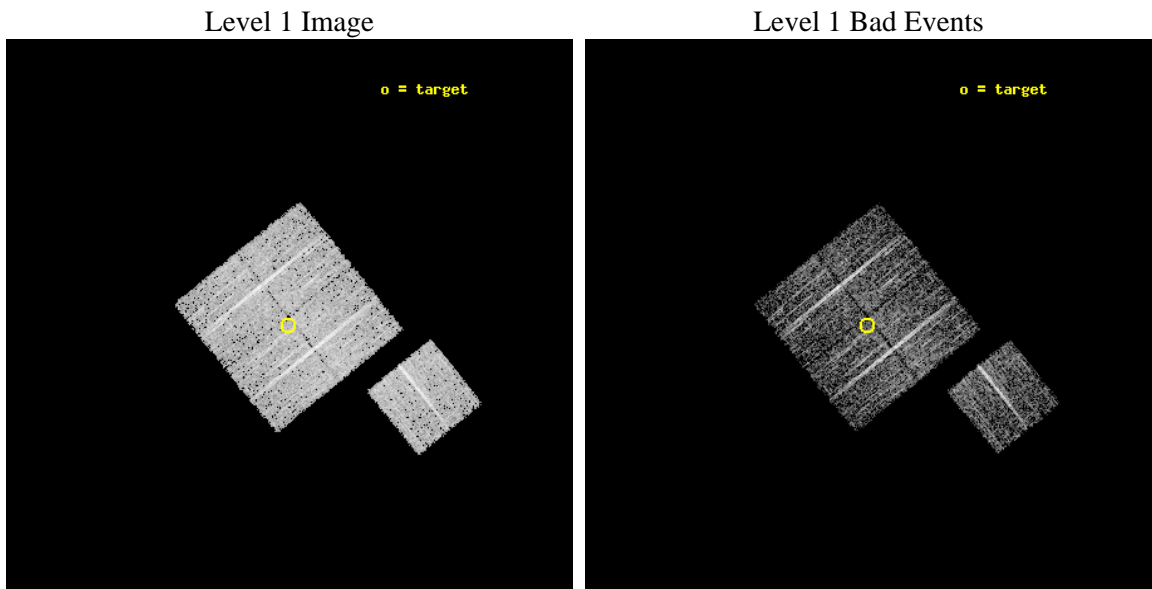
seq_num	900230	Sequence number
obs_id	3630	Observation id
title	CHANDRA LARGE SCALE SURVEY OF THE NOAO BOOTES DEEP FIELD	Proposal
observer	Dr. Stephen Murray	Principal investigator
object	NOAO FIELD F61	Source name
dtcycle	0	
cycle	P	events from which exps? Prim/Second/Both
ra_targ	218.893848	Observer's specified target RA [deg]
dec_targ	34.882776	Observer's specified target Dec [deg]
ra_nom	218.89110296822	Nominal RA [deg]
dec_nom	34.88678882747	Nominal Dec [deg]
roll_nom	141.01025018464	Nominal Roll [deg]
revision	3	Processing version of data
ontime	4776.6349926889	Sum of GTIs [s]
livetime	4714.2247400019	Livetime [s]
ontime0	4776.5118925869	Sum of GTIs [s]
ontime1	4776.5529126823	Sum of GTIs [s]
ontime2	4776.5939526856	Sum of GTIs [s]
ontime3	4776.6349926889	Sum of GTIs [s]
ontime6	4776.4708525836	Sum of GTIs [s]
l2events	9608	Number of level 2 events



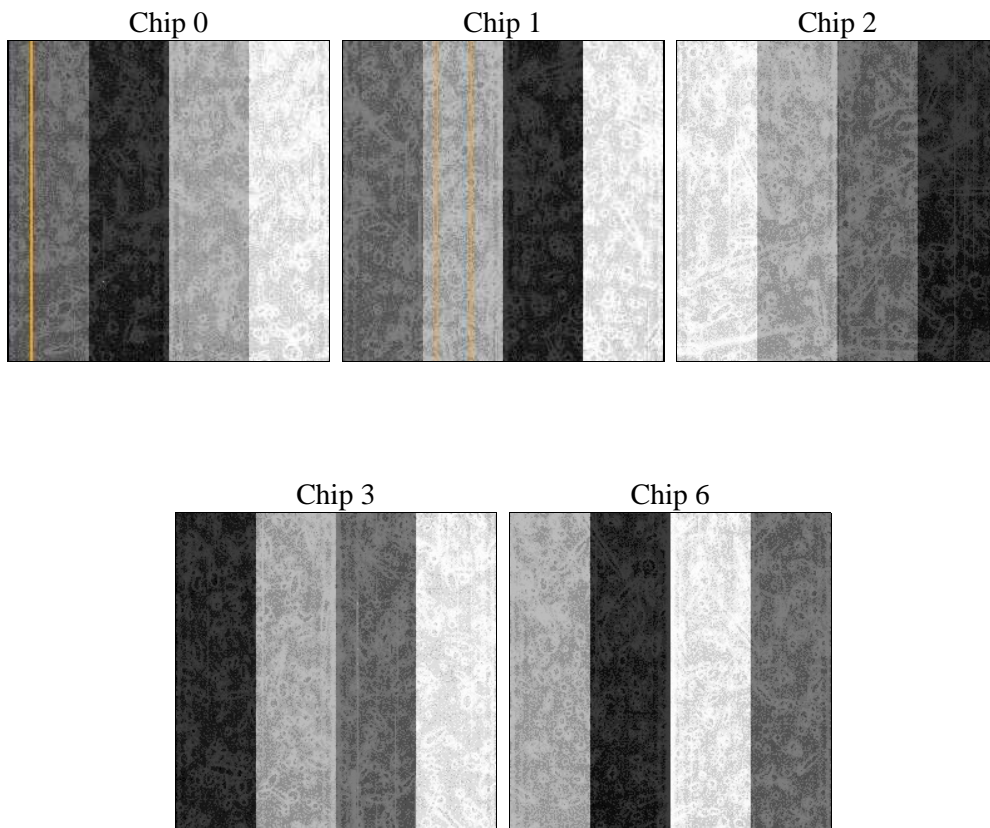
2 OBI

2.1 OBI

2.1.1 Images



2.1.2 Bias



2.1.3 Parameters

obi_num	1	Obi number	sched_exp_time	5000.000000	[s] Scheduled observation exposure time
ascdsver	8.4.5	Processing system revision	ontime	4776.6349926889	Sum of GTIs [s]
caldsver	4.5.2	 	ontime0	4776.5118925869	Sum of GTIs [s]
date	2012-10-25T23:43:56	Date and time of file creation	ontime1	4776.5529126823	Sum of GTIs [s]
revision	3	Processing version of data	ontime2	4776.5939526856	Sum of GTIs [s]
			ontime3	4776.6349926889	Sum of GTIs [s]
			ontime6	4776.4708525836	Sum of GTIs [s]
			l1events	118279	Number of level 1 events

2.1.4 Events

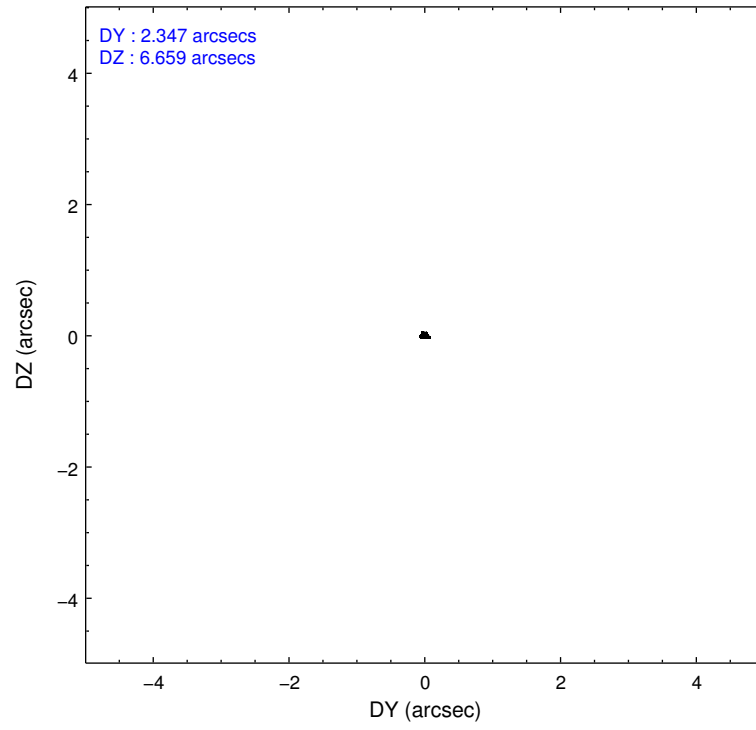
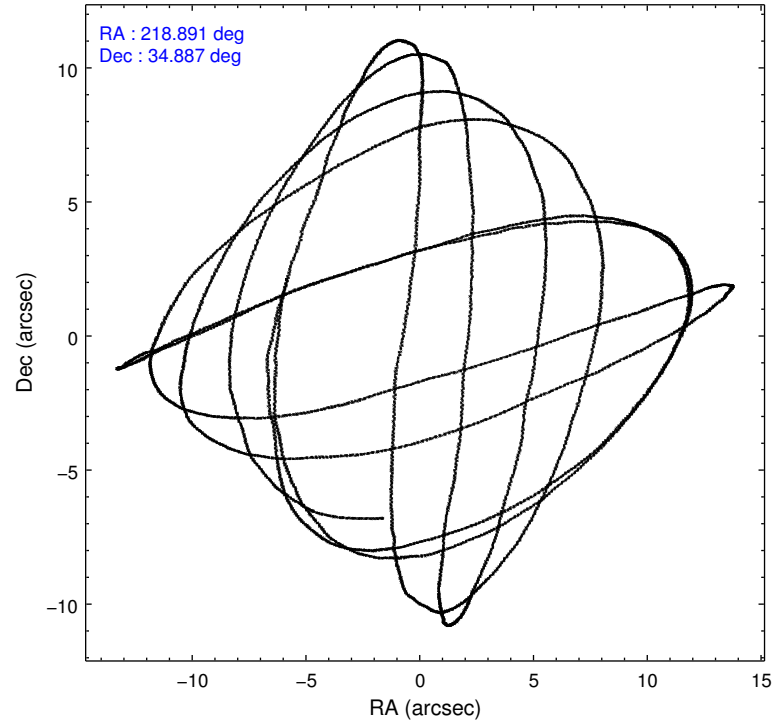
	ccd 0	ccd 1	ccd 2	ccd 3	ccd 6
level 1 events	22975	22870	25061	23626	23747
rejected events	20569	20403	22742	21389	21393
rejected %	89%	89%	90%	90%	90%

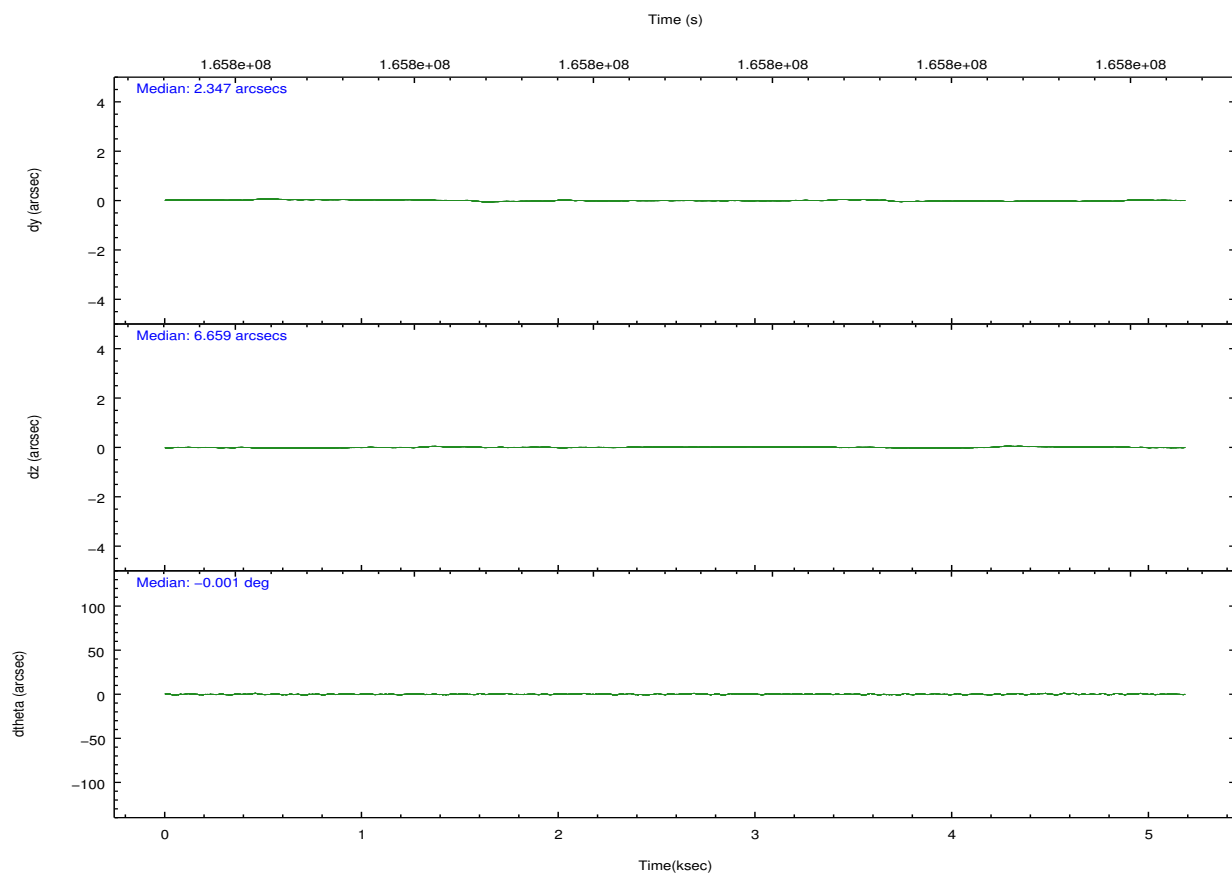
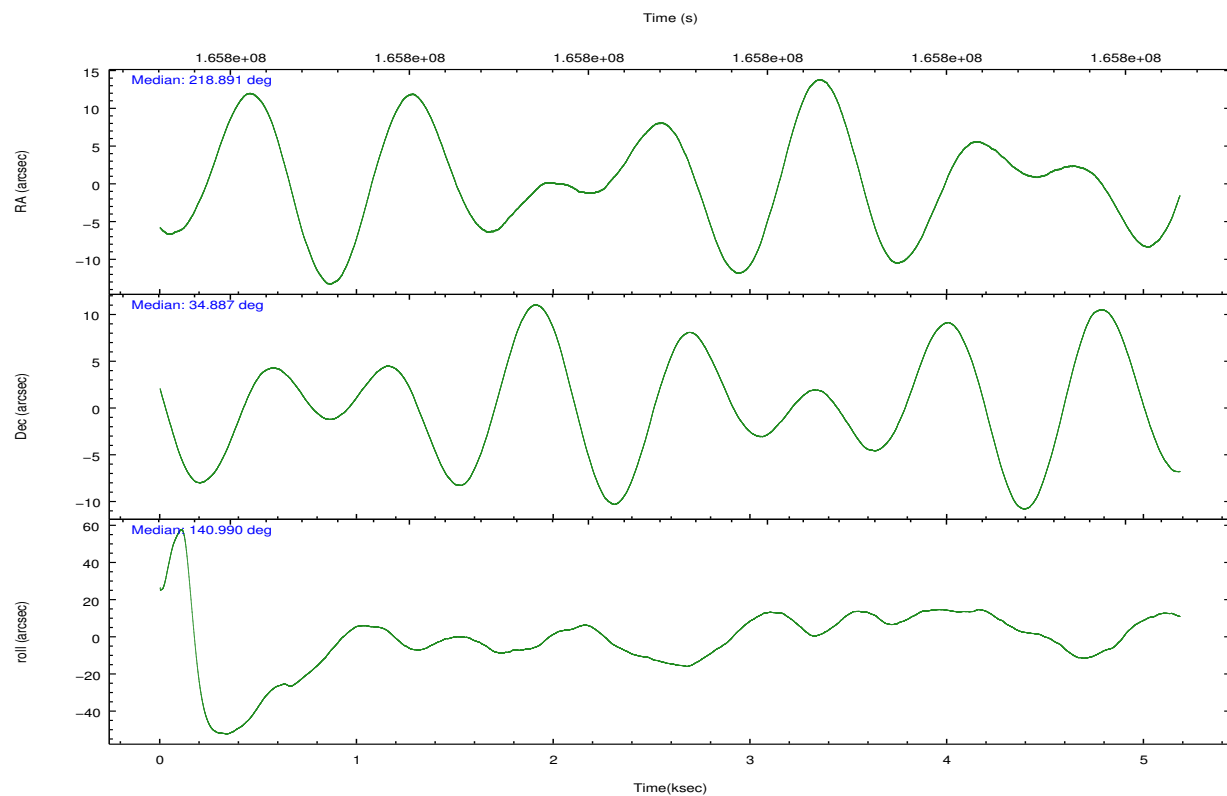
	ccd 0	ccd 1	ccd 2	ccd 3	ccd 6
grade 0 events	891	827	859	849	854
	3%	3%	3%	3%	3%
grade 1 events	14	12	11	20	9
	0%	0%	0%	0%	0%
grade 2 events	511	518	509	436	524
	2%	2%	2%	1%	2%
grade 3 events	317	334	265	256	249
	1%	1%	1%	1%	1%
grade 4 events	284	325	278	267	303
	1%	1%	1%	1%	1%
grade 5 events	729	797	689	807	815
	3%	3%	2%	3%	3%
grade 6 events	403	463	412	430	427
	1%	2%	1%	1%	1%
grade 7 events	19826	19594	22038	20561	20566
	86%	85%	87%	87%	86%

2.2 Compared Parameters

Parameter	Planned	Actual	Parameter	Planned	Actual
Instrument	ACIS	ACIS	Obspar format version number	7	7
Detector	ACIS-01236	ACIS-01236	Obspar file type	PREDICTED	ACTUAL
Grating	NONE	NONE	Obspar update status	NONE	UPDATED
Data mode	VFAINT	VFAINT	Number of optional ACIS chips dropped	0	0
Observation mode	POINTING	POINTING	On-chip summing requested	N	N
[deg] Pointing RA	218.924189	218.8911029682236	Subarray requested	NONE	NONE
[deg] Pointing Dec	34.882693	34.88678882747046	Alternating exposures requested	N	N
[deg] Pointing Roll	140.782649	141.0102501846435	[s] Primary exposure time	0.000000	3.1
[mm] SIM focus pos	-0.782348	-0.7809083437167272			
[mm] SIM defocus	0	0.001439871863259334			
[mm] SIM translation stage pos	-233.592463	-233.5874344608287			
[mm] SIM translation stage offset	0	-0.005018542100998502			
[s] Observation start time (MET)	165799050.184000	165798674.09215			
Observation start date	2003-04-03T23:16:26	2003-04-03T23:11:14			
[s] Observation end time (MET)	165804050.184000	165804184.49238			
Observation end date	2003-04-04T00:39:46	2003-04-04T00:43:04			
Read mode	TIMED	TIMED			

2.3 Aspect



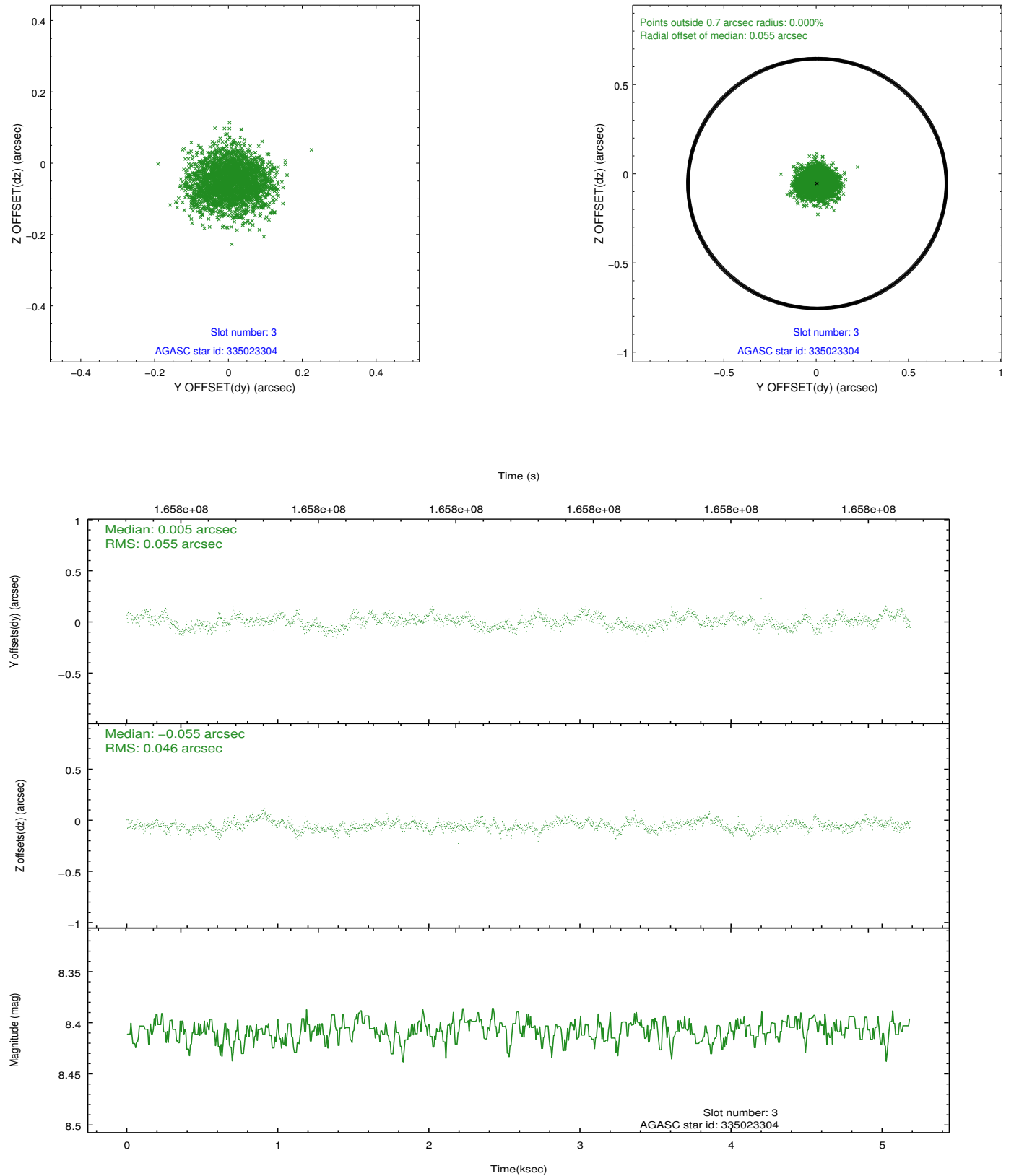


Slot Statistics

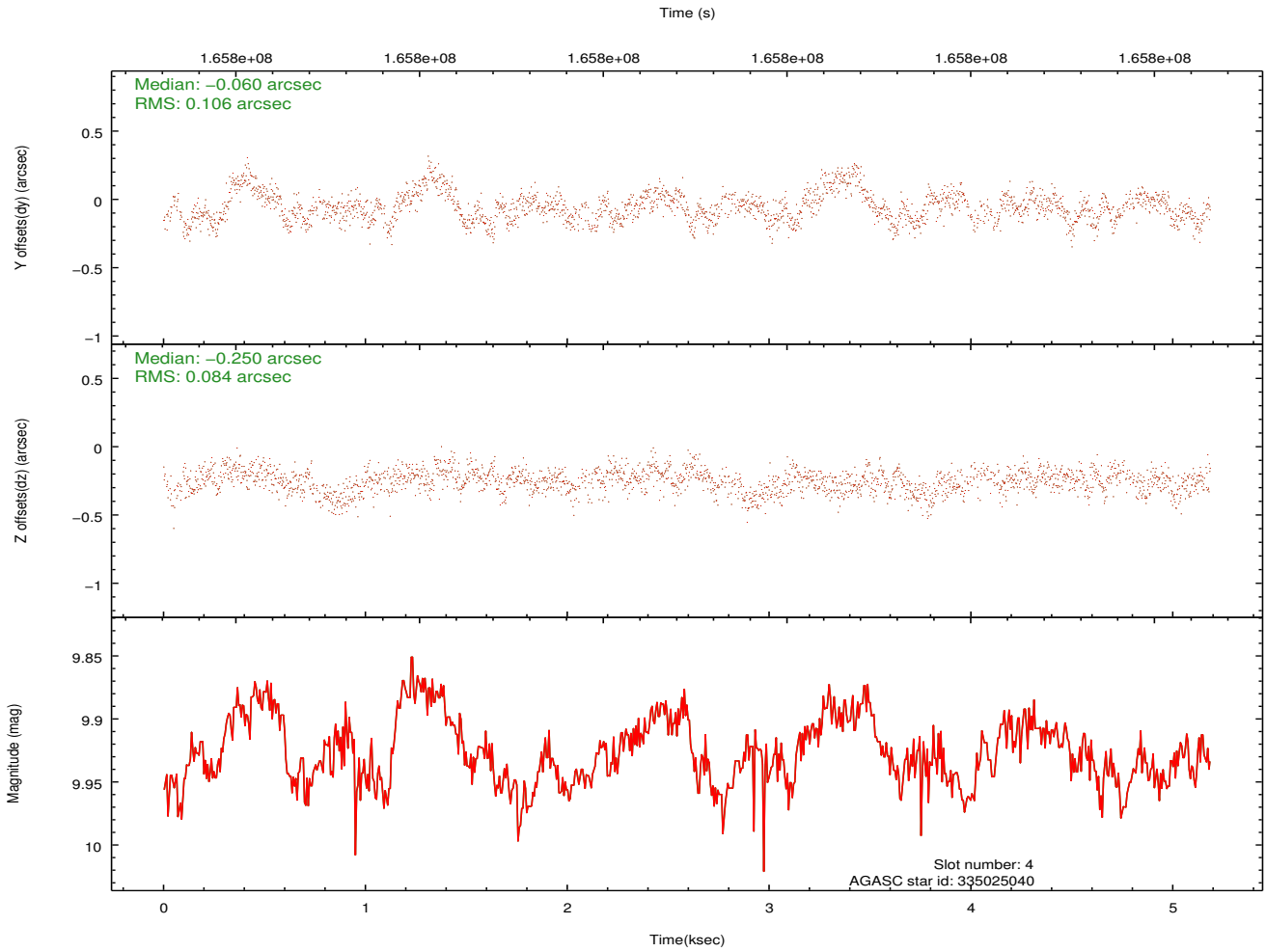
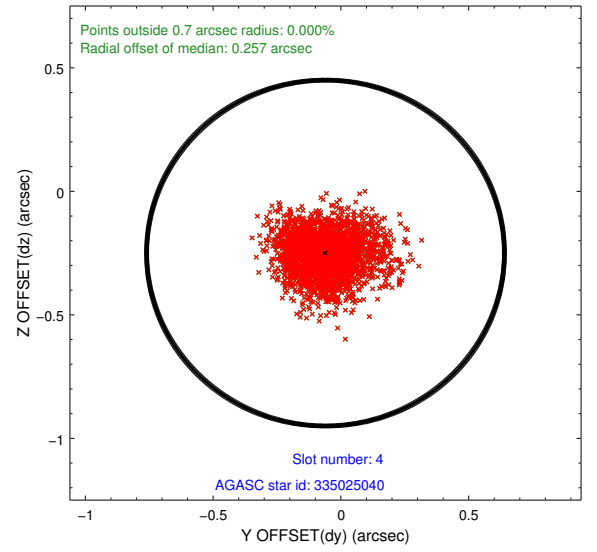
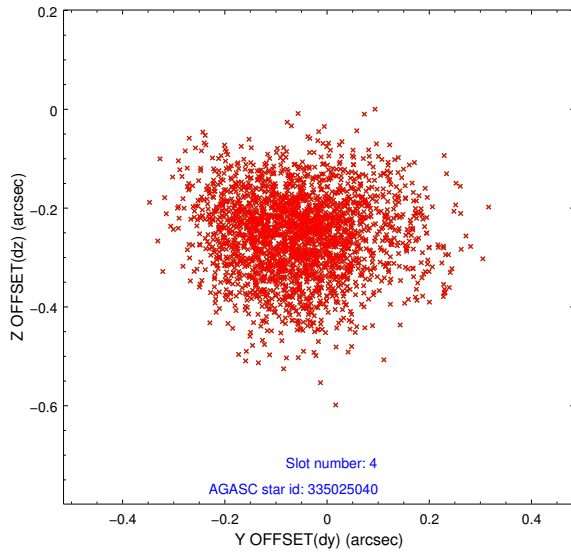
slot	status	id	mag	n_pts	med_dy	med_dz	dr1	dr2	ra	dec	mean_y	mean_z
0	FID	ACIS-I-1	7.25	1265	0.011	-0.003	0.006	0.011	0.000000	0.000000	937.45	-830.07
1	FID	ACIS-I-5	7.24	1264	-0.080	0.051	0.006	0.011	0.000000	0.000000	-1810.05	1066.95
2	FID	ACIS-I-6	7.26	1265	-0.022	0.023	0.007	0.011	0.000000	0.000000	401.76	1712.71
3	GUIDE	335023304	8.41	2530	0.005	-0.055	0.077	0.121	218.883608	34.686545	-353.77	622.87
4	BAD	335025040	9.93	2408	-0.060	-0.250	0.142	0.238	218.601670	34.305240	-571.04	2215.72
5	GUIDE	335152968	9.77	2529	-0.037	0.132	0.098	0.160	219.446087	34.867883	-1225.71	-935.79
6	GUIDE	335153056	10.19	2530	0.198	0.152	0.112	0.187	219.264627	34.869152	-809.03	-599.79
7	GUIDE	335414336	8.95	2529	-0.114	0.011	0.077	0.128	218.979022	35.090910	348.46	-682.95

2.4 Star Slots

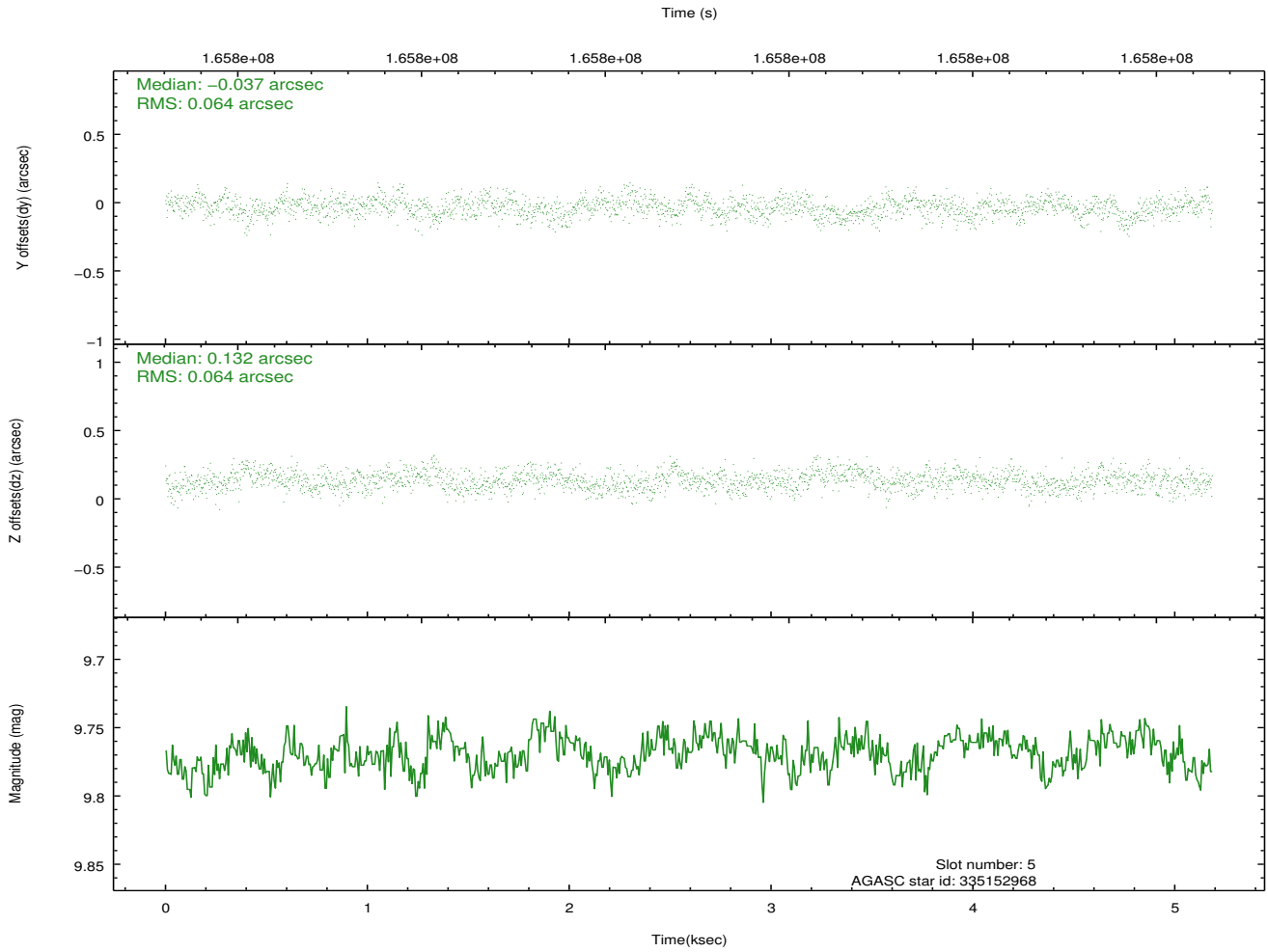
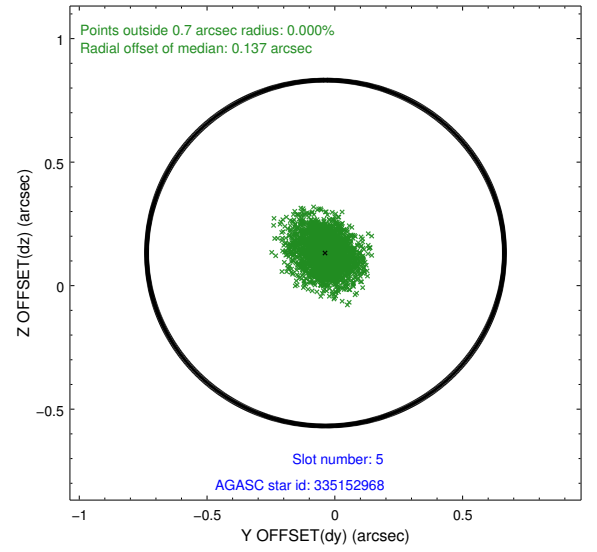
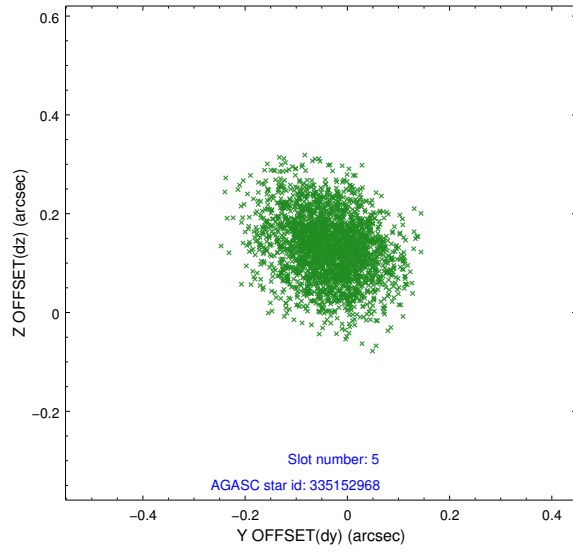
2.4.1 Slot 3



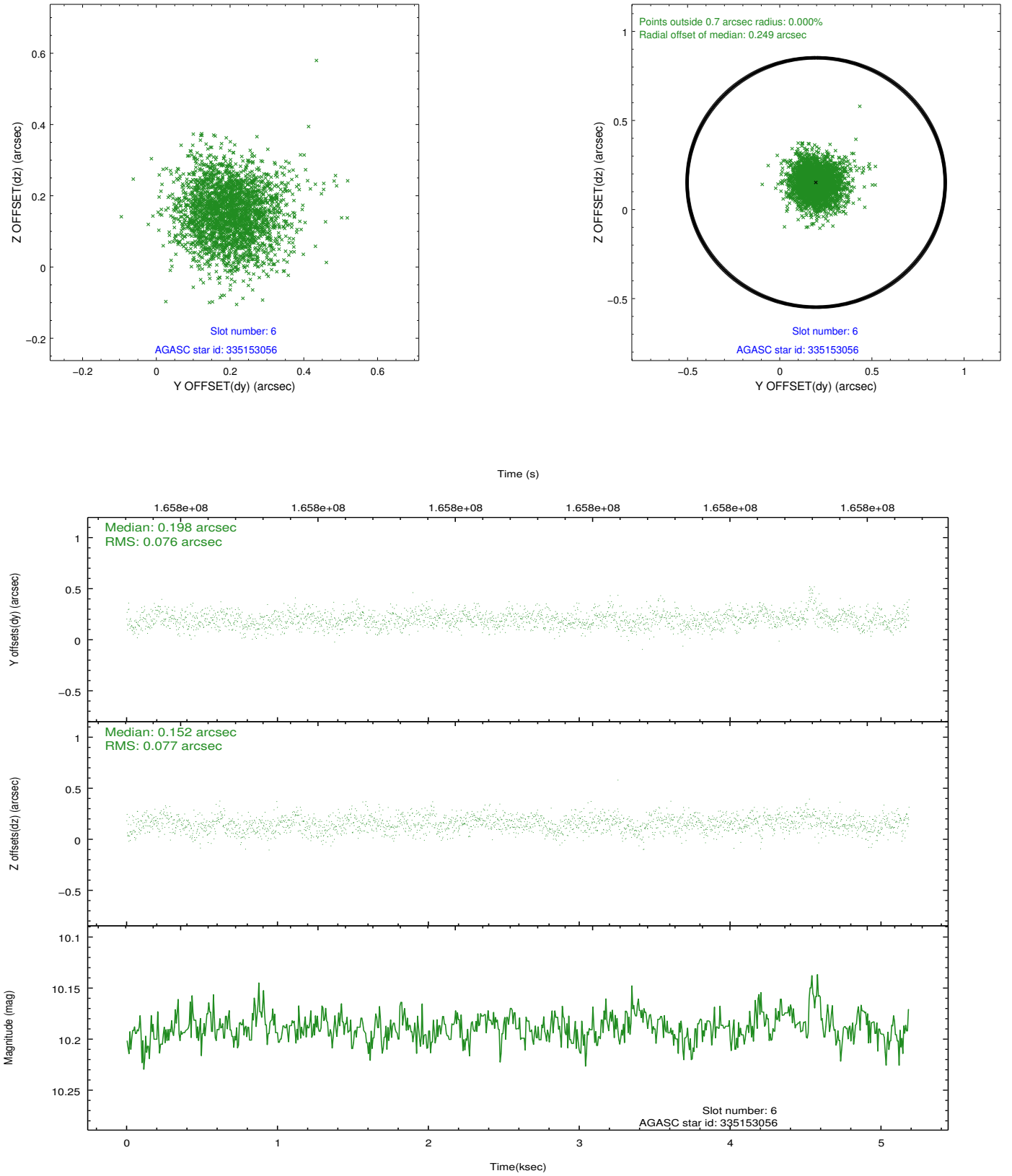
2.4.2 Slot 4



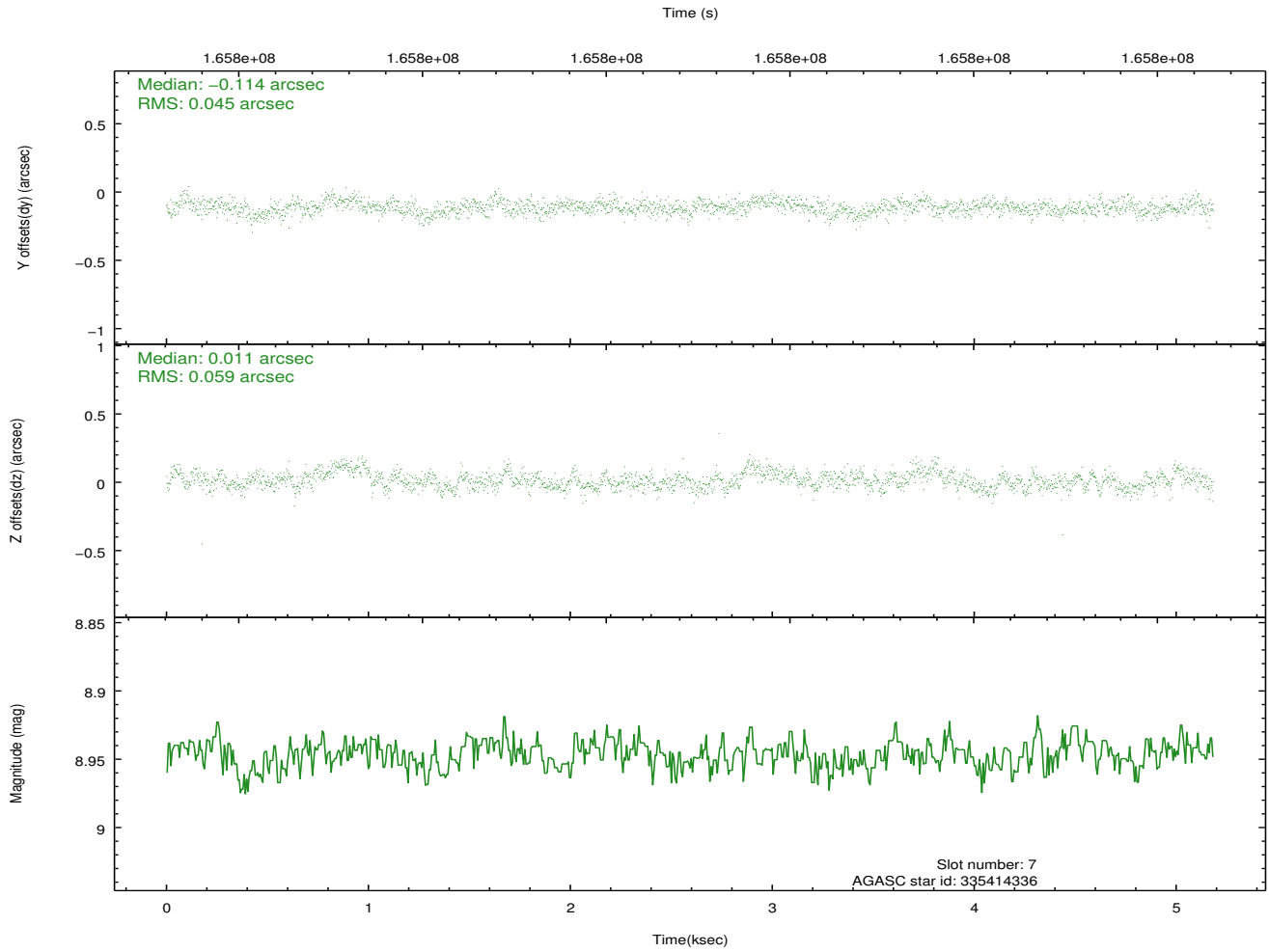
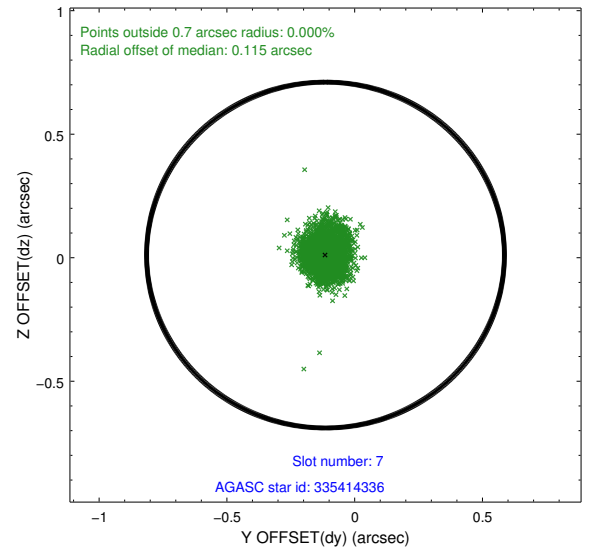
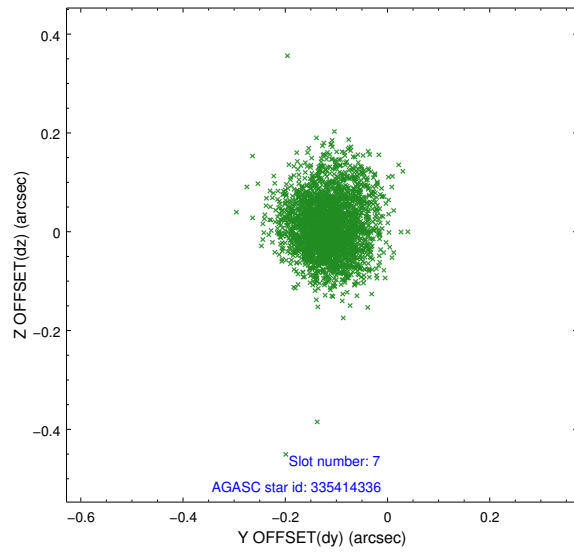
2.4.3 Slot 5



2.4.4 Slot 6

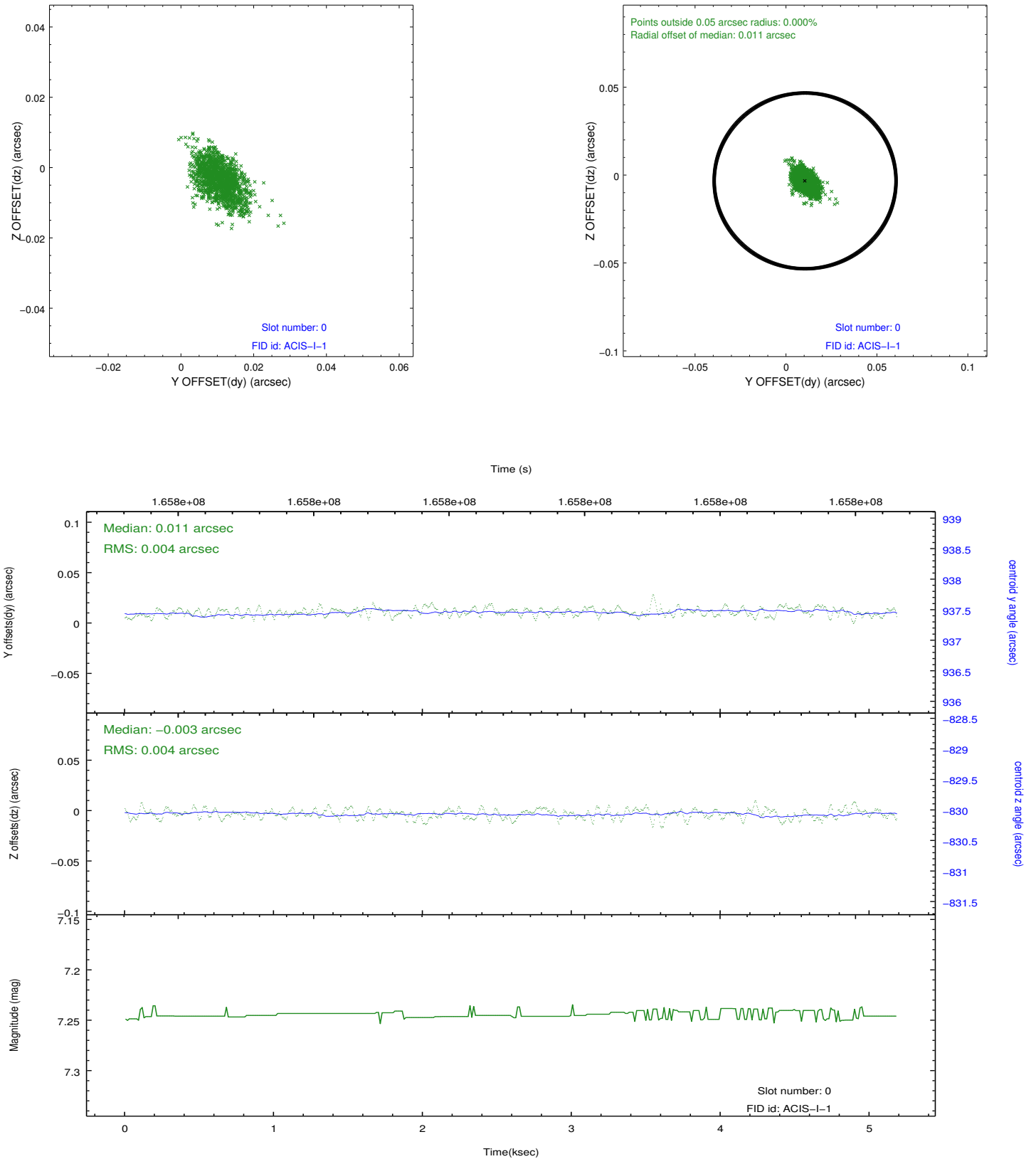


2.4.5 Slot 7

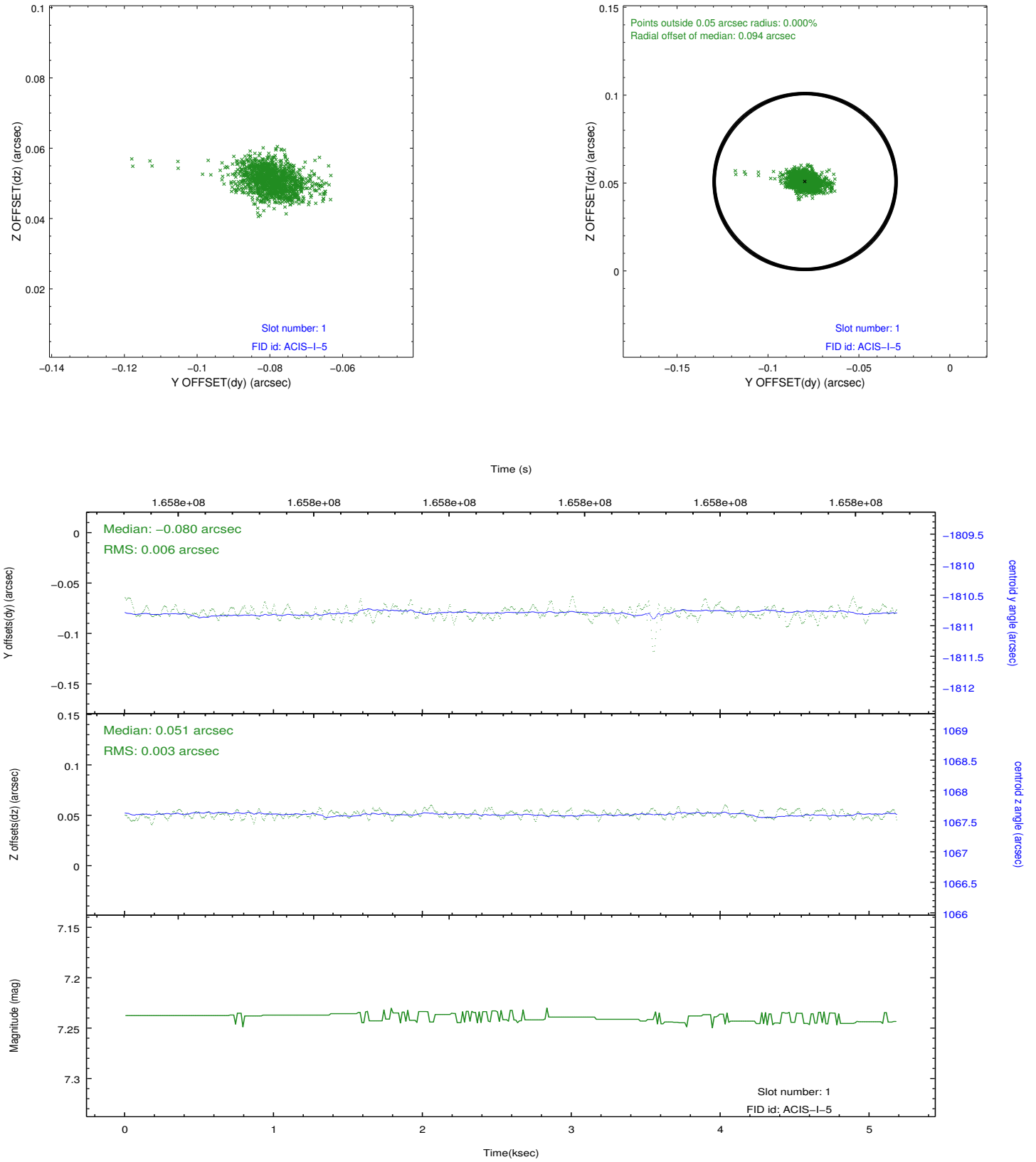


2.5 FID Slots

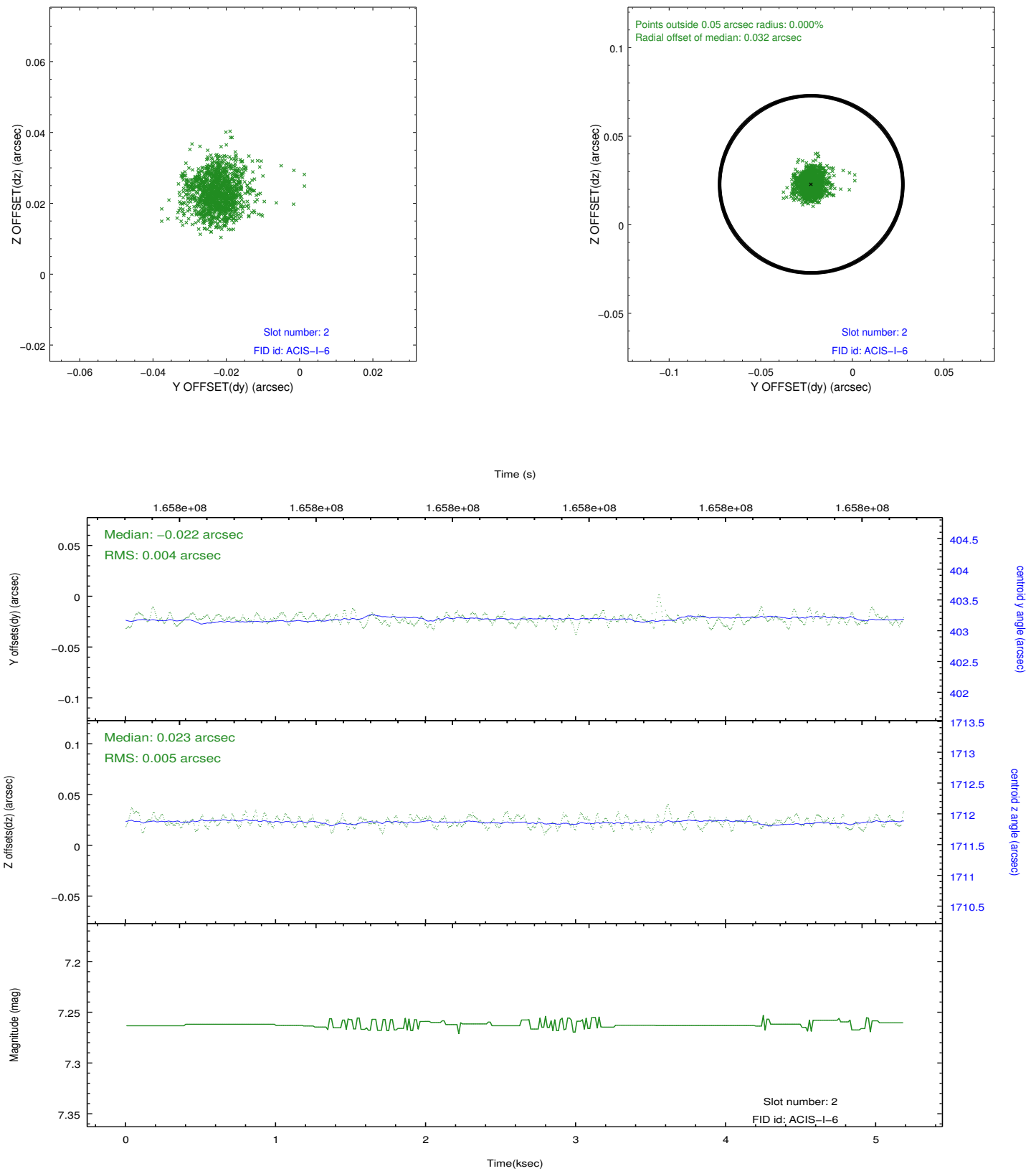
2.5.1 Slot 0



2.5.2 Slot 1



2.5.3 Slot 2



A Summary

A.1 Status

V&V Scientist	Joy Nichols
V&V Date (YYYY-MM-DD)	2013.02.01
V&V Edition	1
V&V Disposition and Status	OK
V&V Charge Time	4.777

A.2 Comments