

V&V Reference Report

L2 ASCDS Version : 7.6.8

Observation 3630 - L2 Version 001
Chandra X-Ray Center

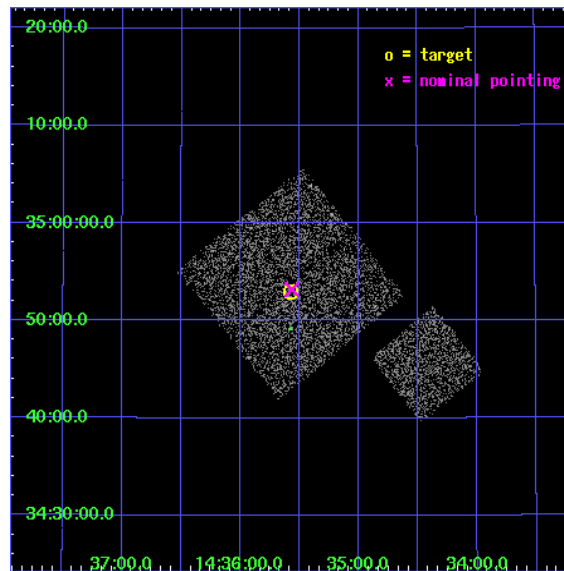
L2 Processing Date : Jul 30 2006

Contents

1	Front	2
2	OBI	3
2.1	OBI	3
2.1.1	Images	3
2.1.2	Bias	3
2.1.3	Parameters	4
2.1.4	Events	4
2.2	Compared Parameters	5
2.3	Aspect	6
2.4	Star Slots	9
2.4.1	Slot 3	9
2.4.2	Slot 4	10
2.4.3	Slot 5	11
2.4.4	Slot 6	12
2.4.5	Slot 7	13
2.5	FID Slots	14
2.5.1	Slot 0	14
2.5.2	Slot 1	15
2.5.3	Slot 2	16
3	Point Sources	17
A	Summary	18
A.1	Status	18
A.2	Comments	18

1 Front

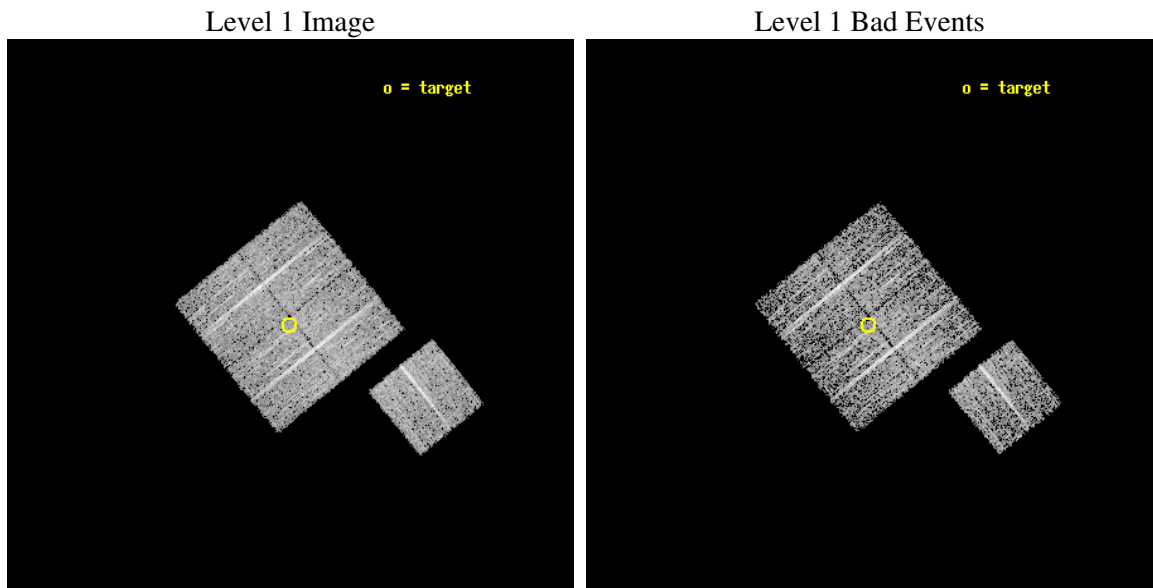
seq_num	900230
obs_id	3630
title	CHANDRA LARGE SCALE SURVEY OF THE NOAO BOOTES DEEP FIELD
observer	Dr. Stephen Murray
object	NOAO FIELD F61
dtcycle	0
cycle	P
ra_targ	218.893848
dec_targ	34.882776
ra_nom	218.89110296822
dec_nom	34.88678882747
roll_nom	141.01025018464
revision	2
ontime	4777.0999908149
livetime	4714.6836625851
ontime0	4777.0999908149
ontime1	4777.0999908149
ontime2	4777.0999908149
ontime3	4777.0999908149
ontime6	4777.0999908149
l2events	9612



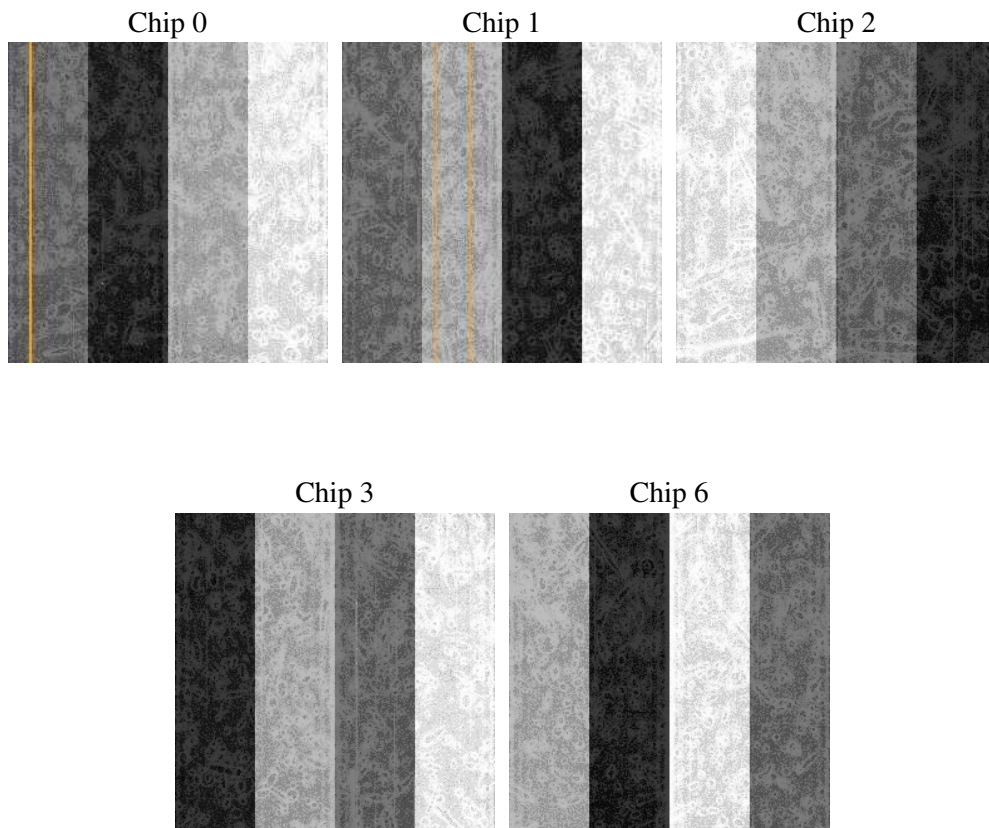
2 OBI

2.1 OBI

2.1.1 Images



2.1.2 Bias



2.1.3 Parameters

obi_num	1
ascdsver	7.6.8
caldbver	3.2.2
date	2006-07-30T02:30:16
revision	2

sched_exp_time	5000.000000
ontime	4780.6133717
ontime0	4780.613391608
ontime1	4780.6133717
ontime2	4780.6133717
ontime3	4780.6133717
ontime6	4780.613391608
llevents	118279

2.1.4 Events

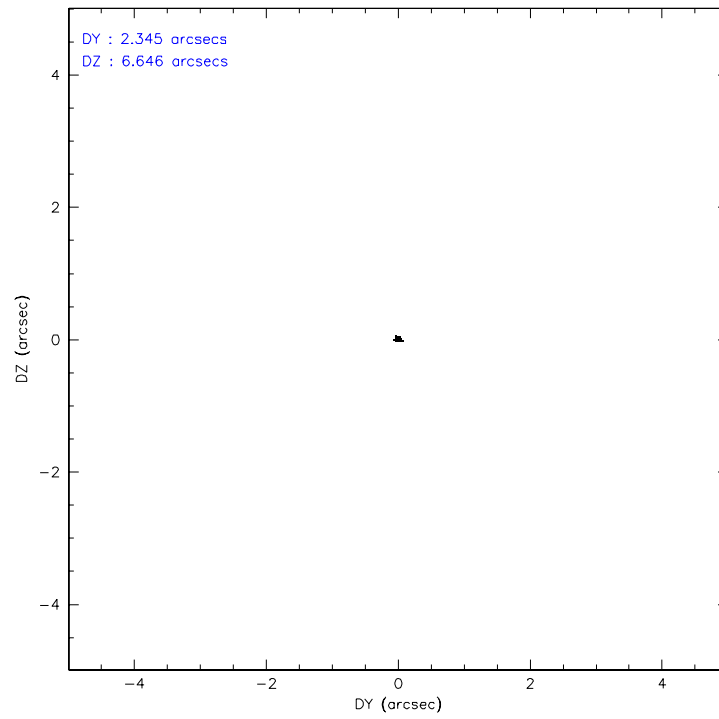
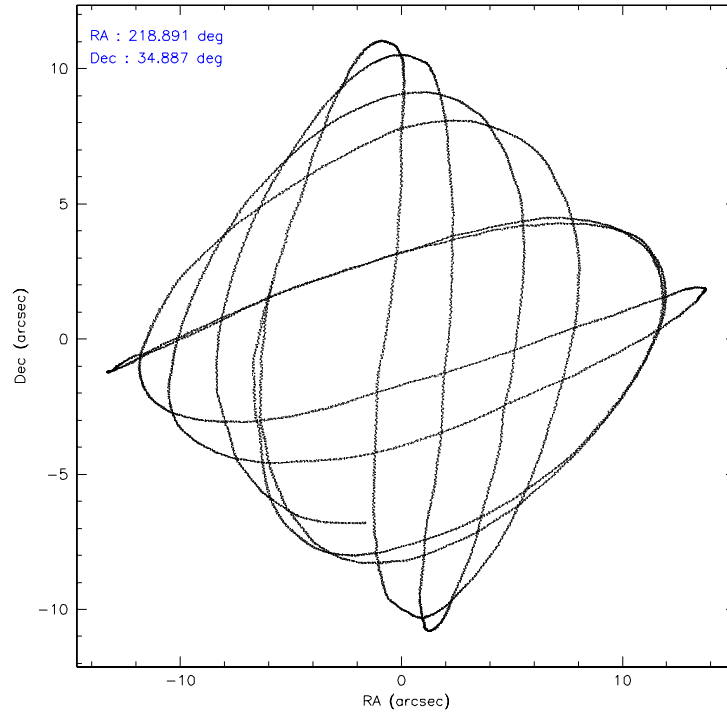
	ccd 0	ccd 1	ccd 2	ccd 3	ccd 6
level 1 events	22975	22870	25061	23626	23747
rejected events	20568	20403	22741	21388	21394
rejected %	89%	89%	90%	90%	90%

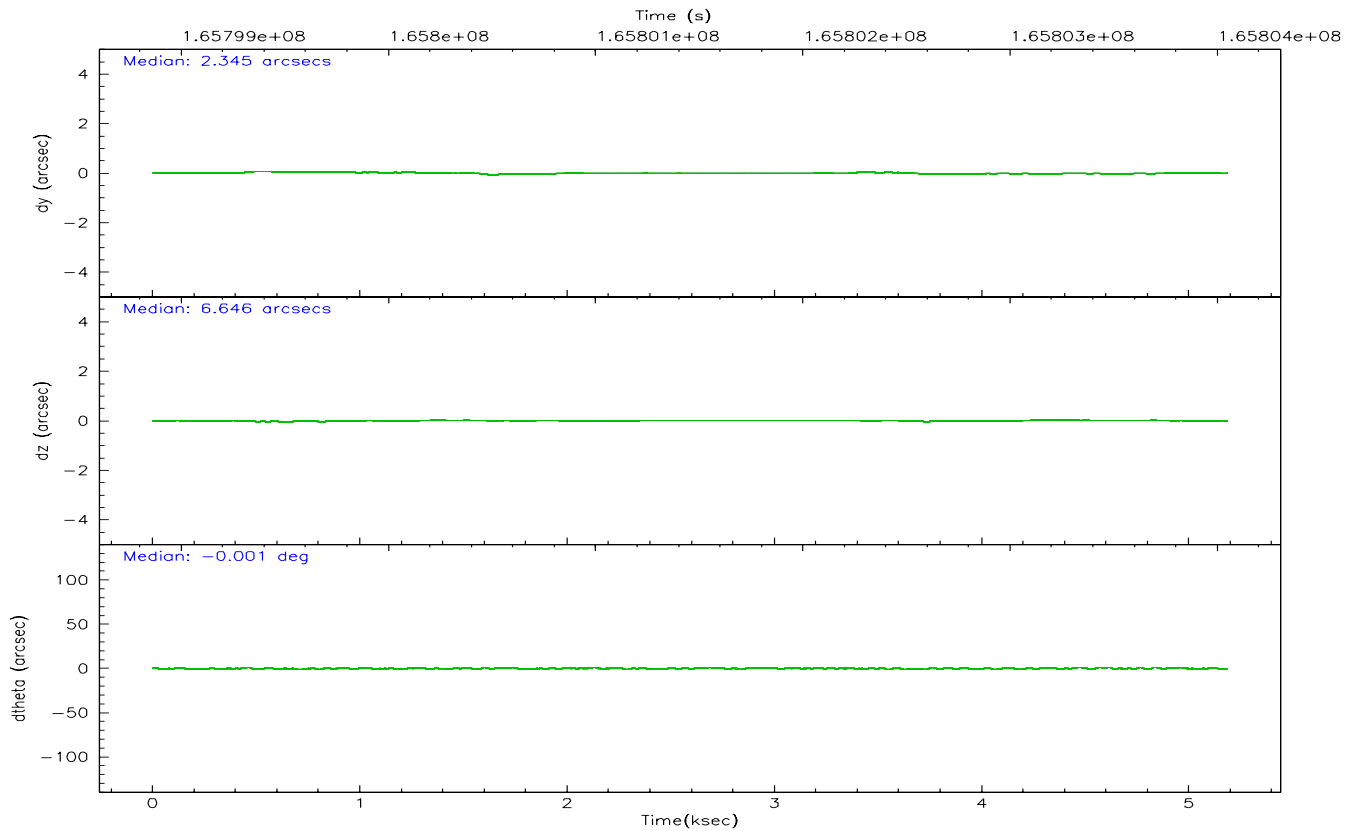
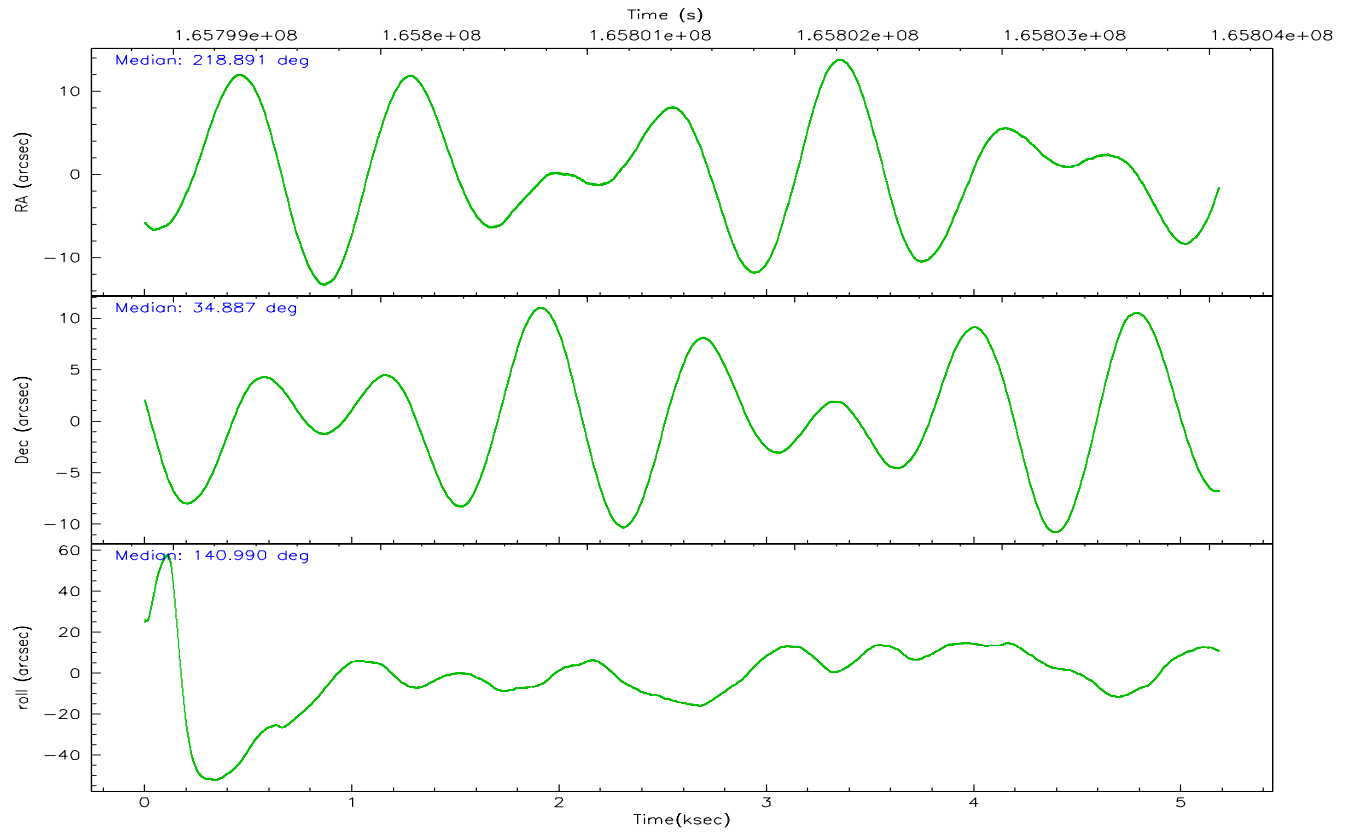
	ccd 0	ccd 1	ccd 2	ccd 3	ccd 6
grade 0 events	891	827	859	849	853
	3%	3%	3%	3%	3%
grade 1 events	14	12	11	20	9
	0%	0%	0%	0%	0%
grade 2 events	511	518	509	436	525
	2%	2%	2%	1%	2%
grade 3 events	317	334	265	256	249
	1%	1%	1%	1%	1%
grade 4 events	284	325	278	267	302
	1%	1%	1%	1%	1%
grade 5 events	728	797	688	805	816
	3%	3%	2%	3%	3%
grade 6 events	404	463	413	431	427
	1%	2%	1%	1%	1%
grade 7 events	19826	19594	22038	20562	20566
	86%	85%	87%	87%	86%

2.2 Compared Parameters

Parameter	Planned	Actual	Parameter	Planned	Actual
Instrument	ACIS	ACIS	Obspar format version number	6	6
Detector	ACIS-01236	ACIS-01236	Obspar file type	PREDICTED	ACTUAL
Grating	NONE	NONE	Obspar update status	NONE	UPDATED
Data mode	VFAINT	VFAINT	On-chip summing requested	N	N
Observation mode	POINTING	POINTING	Subarray requested	NONE	NONE
Pointing RA	218.924189	218.8911029682242	Alternating exposures requested	N	N
Pointing Dec	34.882693	34.88678882746986	Primary exposure time	0.000000	3.1
Pointing Roll	140.782649	141.0102501846437			
SIM focus pos (mm)	-0.782348	-0.7809083437167272			
SIM defocus (mm)	0	0.001439871863259334			
SIM translation stage pos (mm)	-233.592463	-233.5874344608287			
SIM translation stage offset (mm)	0	-0.005018542100998502			
Observation start time	165799050.184000	165798674.09215			
Observation start date	2003-04-03T23:16:26	2003-04-03T23:11:14			
Observation end time	165804050.184000	165804184.49238			
Observation end date	2003-04-04T00:39:46	2003-04-04T00:43:04			
Read mode	TIMED	TIMED			

2.3 Aspect



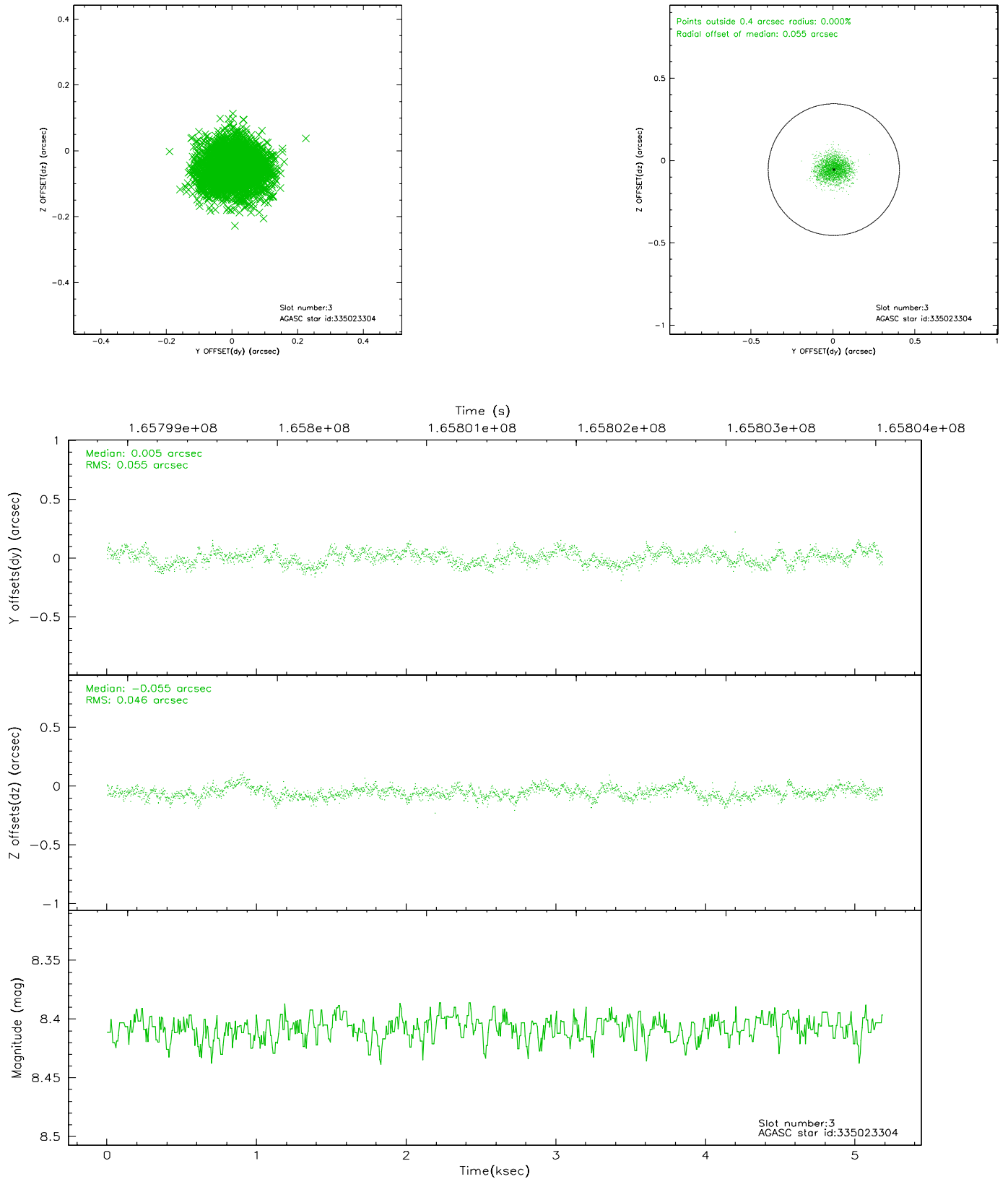


Slot Statistics

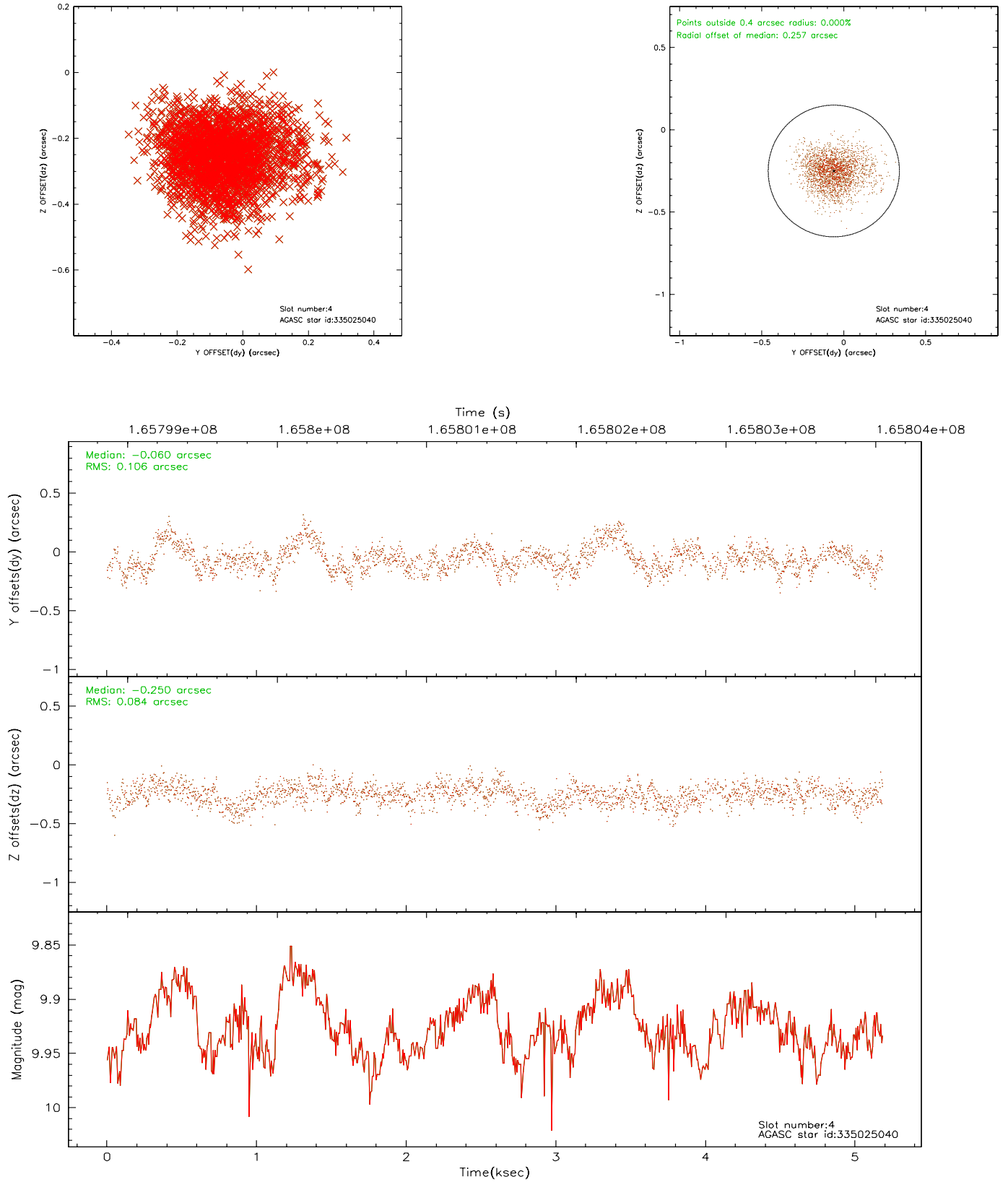
slot	status	id	mag	n_pts	med_dy	med_dz	dr1	dr2	ra	dec	mean_y	mean_z
0	FID	ACIS-I-1	7.25	1265	-0.010	0.024	0.006	0.010	0.000000	0.000000	937.44	-830.03
1	FID	ACIS-I-5	7.24	1264	-0.049	0.043	0.006	0.010	0.000000	0.000000	-1810.02	1066.96
2	FID	ACIS-I-6	7.26	1265	-0.033	0.003	0.007	0.011	0.000000	0.000000	401.75	1712.70
3	GUIDE	335023304	8.41	2530	0.005	-0.055	0.077	0.121	218.883608	34.686545	-353.77	622.87
4	BAD	335025040	9.93	2408	-0.060	-0.250	0.142	0.238	218.601670	34.305240	-571.04	2215.72
5	GUIDE	335152968	9.77	2529	-0.037	0.132	0.098	0.160	219.446087	34.867883	-1225.71	-935.79
6	GUIDE	335153056	10.19	2530	0.198	0.152	0.112	0.187	219.264627	34.869152	-809.03	-599.79
7	GUIDE	335414336	8.95	2529	-0.114	0.011	0.077	0.128	218.979022	35.090910	348.46	-682.95

2.4 Star Slots

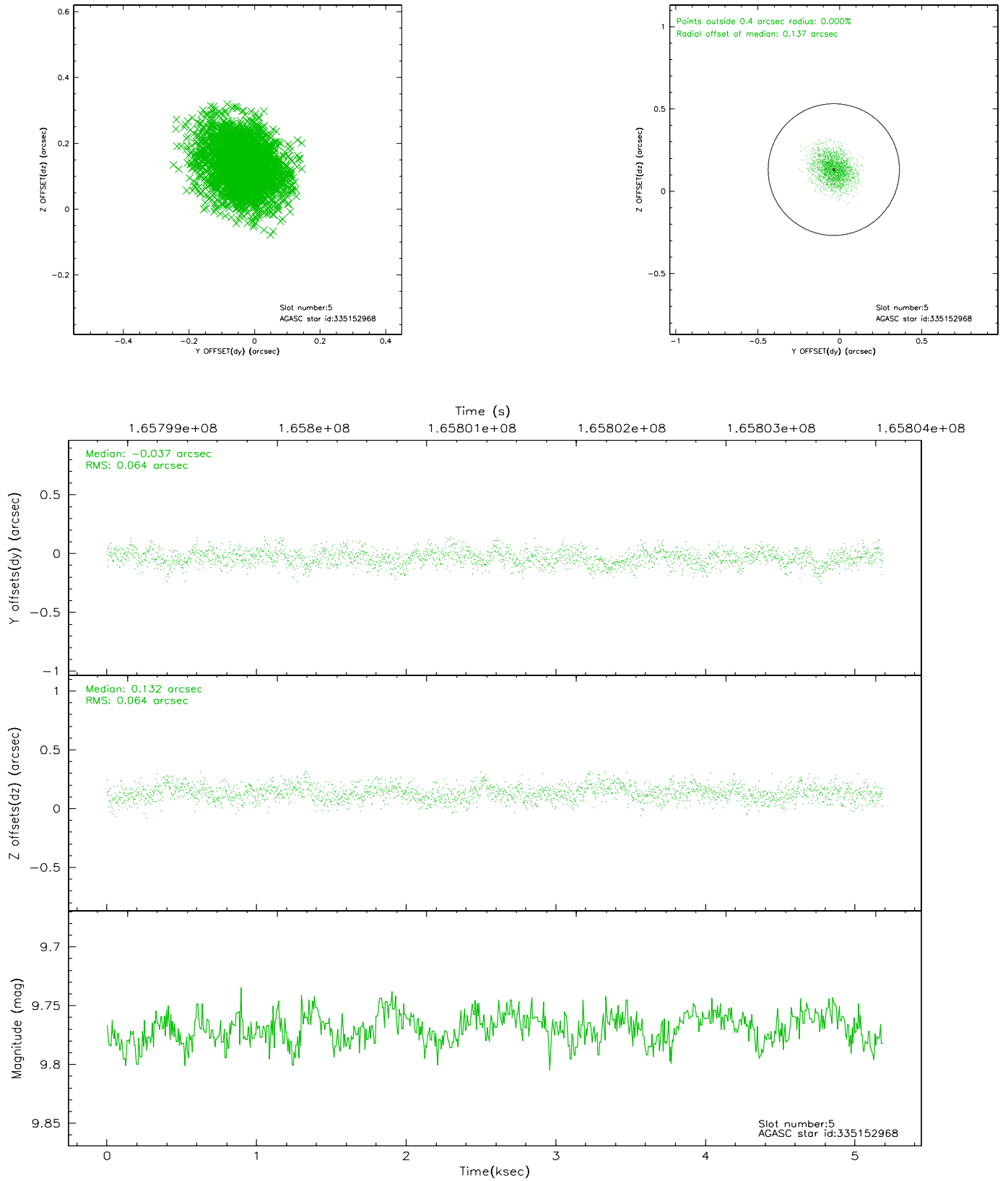
2.4.1 Slot 3



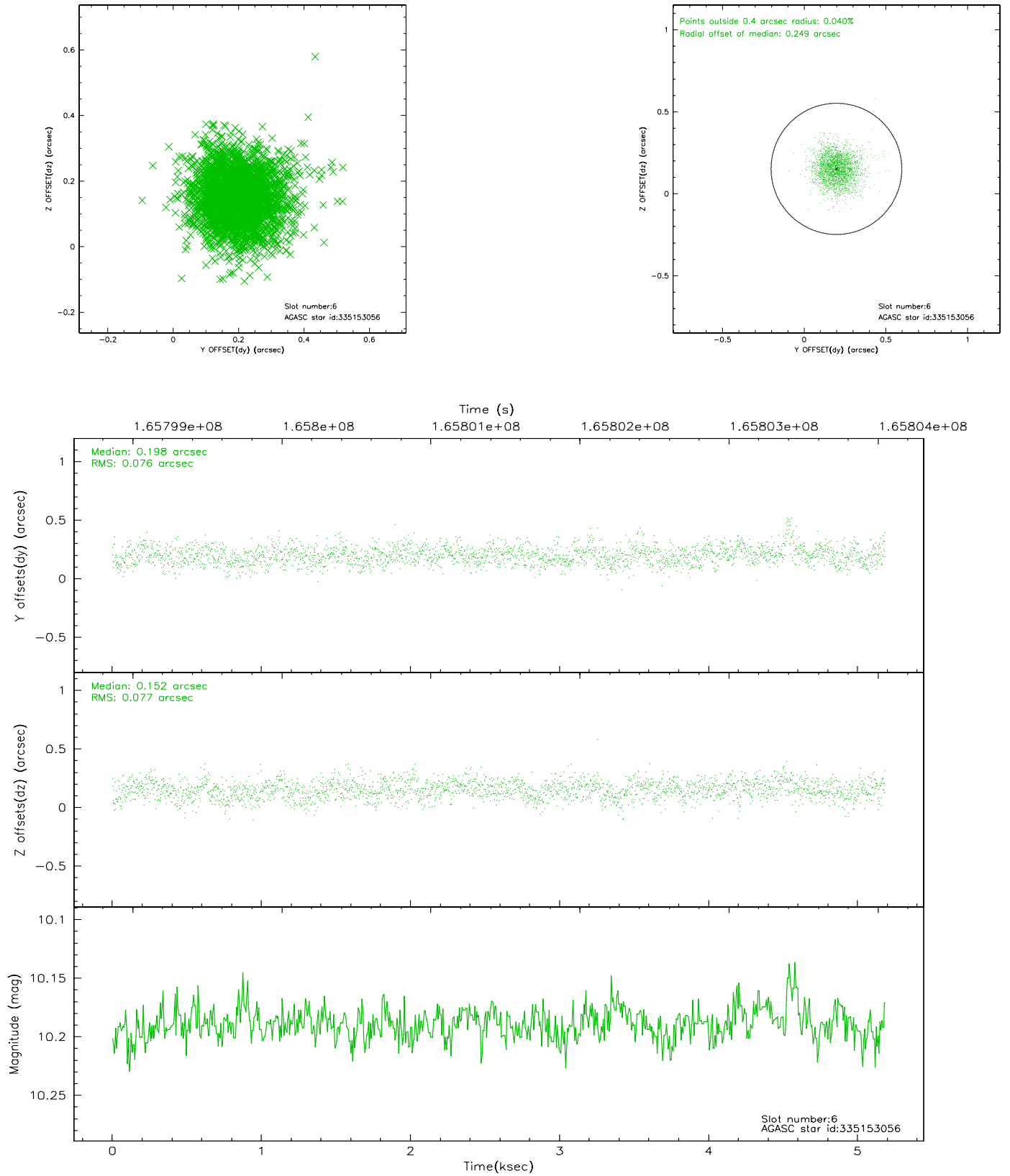
2.4.2 Slot 4



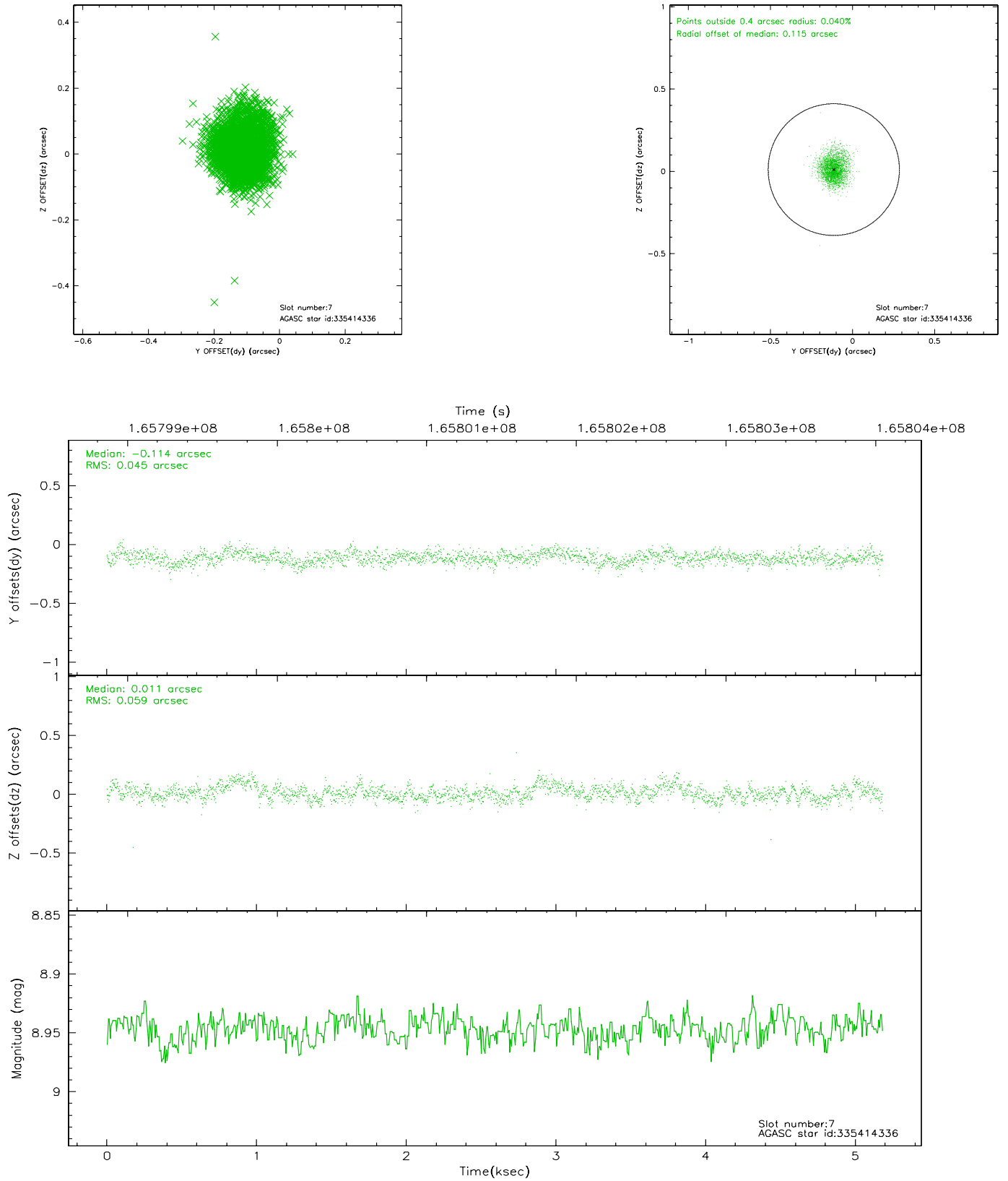
2.4.3 Slot 5



2.4.4 Slot 6

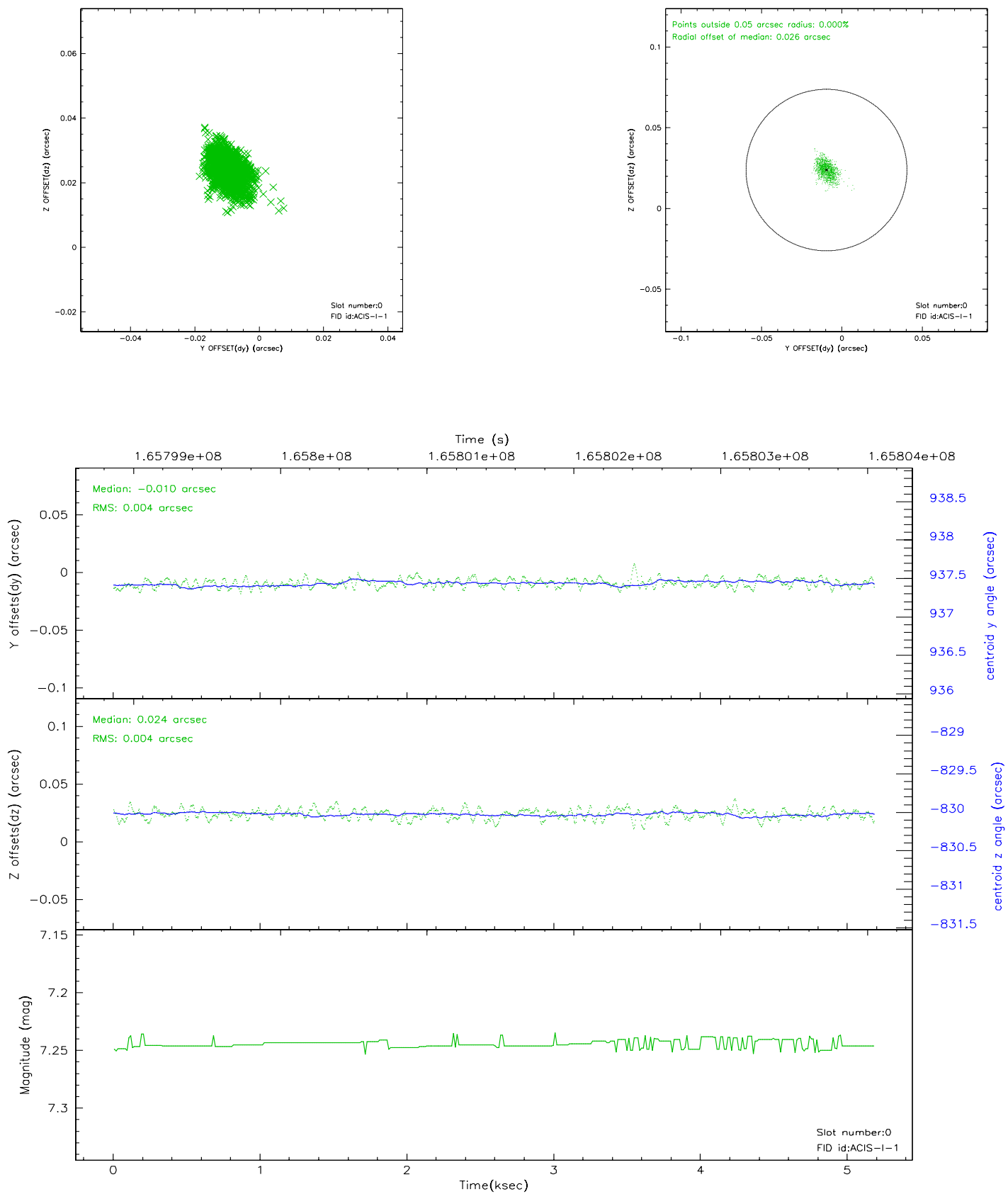


2.4.5 Slot 7

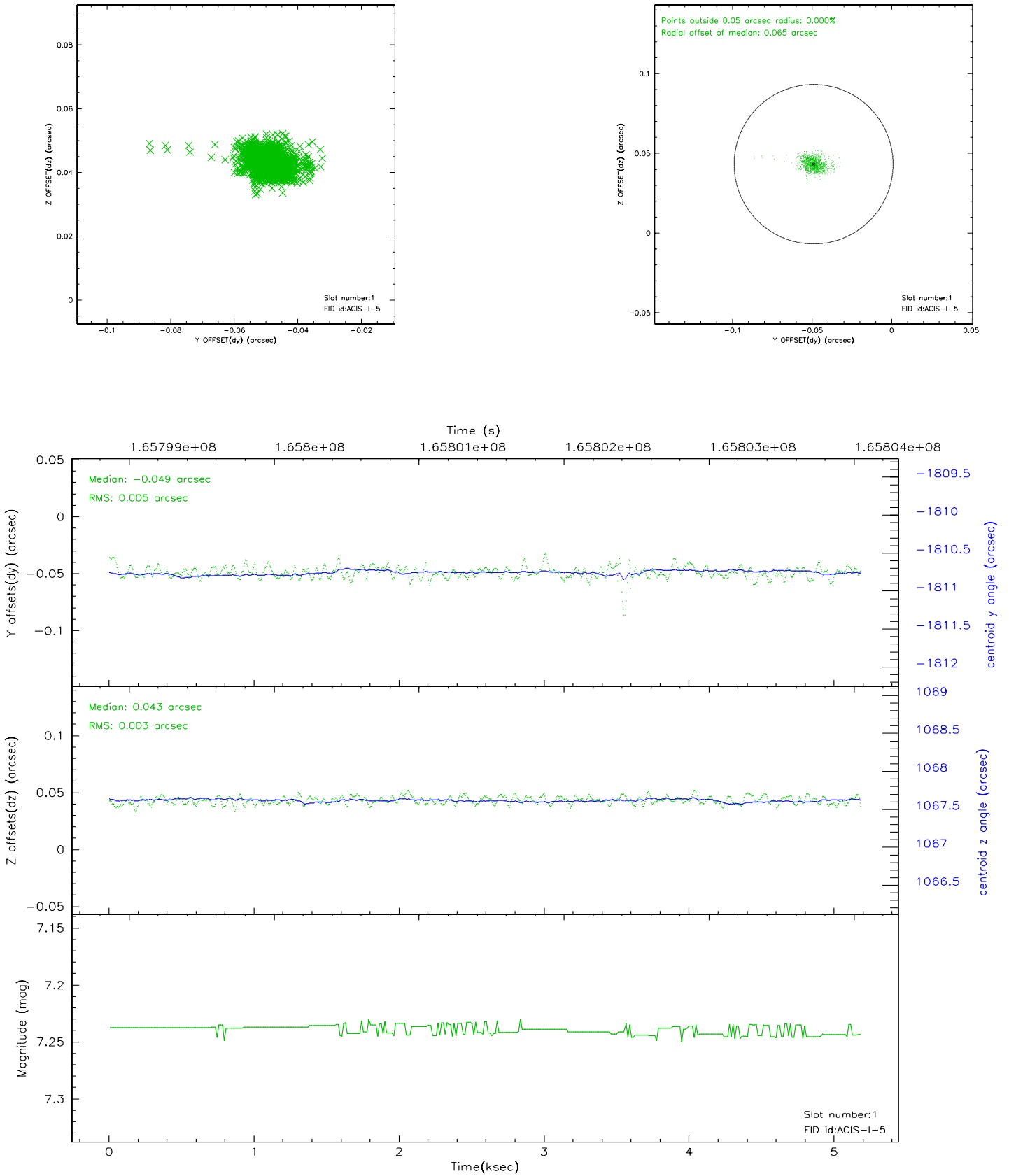


2.5 FID Slots

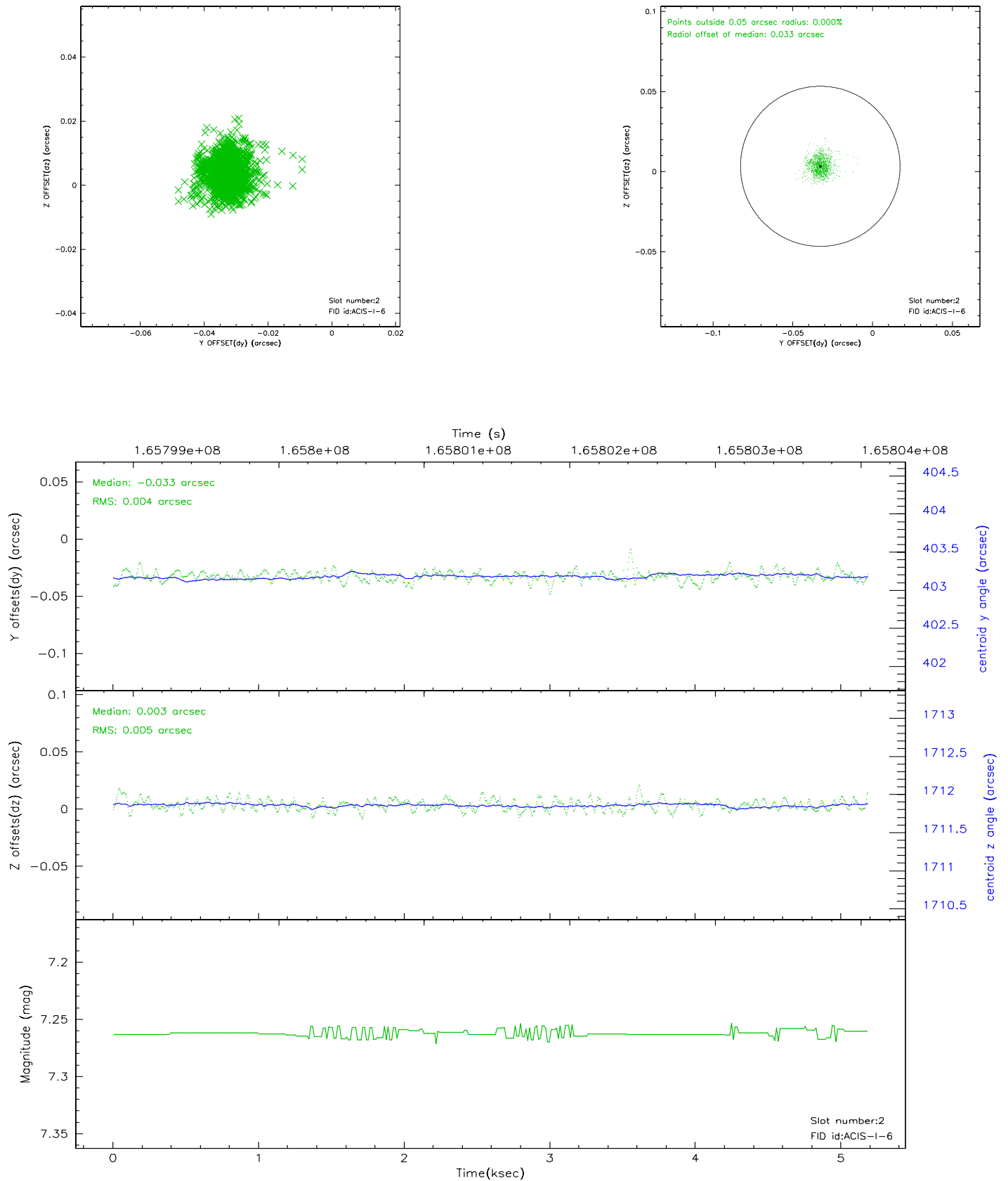
2.5.1 Slot 0



2.5.2 Slot 1

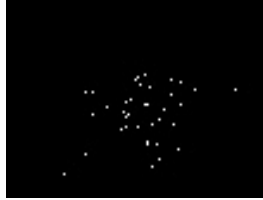


2.5.3 Slot 2



3 Point Sources

4.09 arcmin



A Summary

A.1 Status

V&V Scientist	Jen Lauer
V&V Date (YYYY-MM-DD)	2006.07.30
V&V Edition	1
V&V Disposition and Status	OK
V&V Charge Time	4.777

A.2 Comments

Slot 4 was only tracked for 94% of the aspect interval; it was therefore marked bad and excluded from the aspect solution.