

V&V Reference Report

L2 ASCDS Version : 7.6.8

Observation 3600 - L2 Version 001
Chandra X-Ray Center

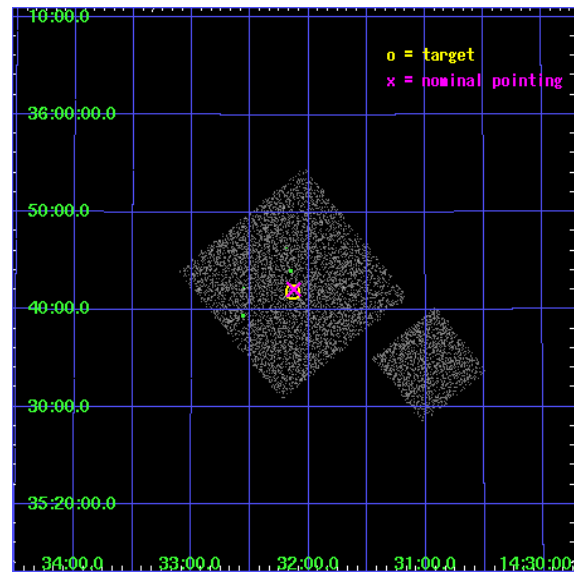
L2 Processing Date : Jul 29 2006

Contents

1	Front	2
2	OBI	3
2.1	OBI	3
2.1.1	Images	3
2.1.2	Bias	3
2.1.3	Parameters	4
2.1.4	Events	4
2.2	Compared Parameters	5
2.3	Aspect	6
2.4	Star Slots	9
2.4.1	Slot 3	9
2.4.2	Slot 4	10
2.4.3	Slot 5	11
2.4.4	Slot 6	12
2.4.5	Slot 7	13
2.5	FID Slots	14
2.5.1	Slot 0	14
2.5.2	Slot 1	15
2.5.3	Slot 2	16
3	Point Sources	17
A	Summary	18
A.1	Status	18
A.2	Comments	18

1 Front

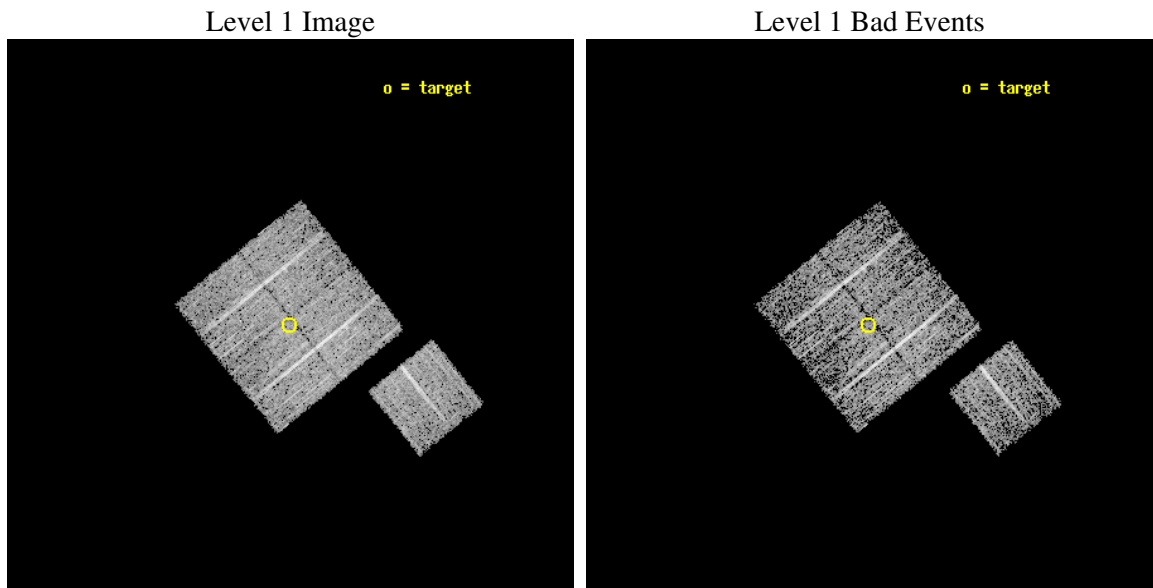
seq_num	900200
obs_id	3600
title	CHANDRA LARGE SCALE SURVEY OF THE NOAO BOOTES DEEP FIELD
observer	Dr. Stephen Murray
object	NOAO FIELD F12
dtcycle	0
cycle	P
ra_targ	218.034014
dec_targ	35.697552
ra_nom	218.03137182772
dec_nom	35.701573010988
roll_nom	141.01023295739
revision	2
ontime	4773.9589906633
livetime	4711.5837019128
ontime0	4777.0999908149
ontime1	4777.0999908149
ontime2	4777.0999908149
ontime3	4773.9589906633
ontime6	4777.0999908149
l2events	9684



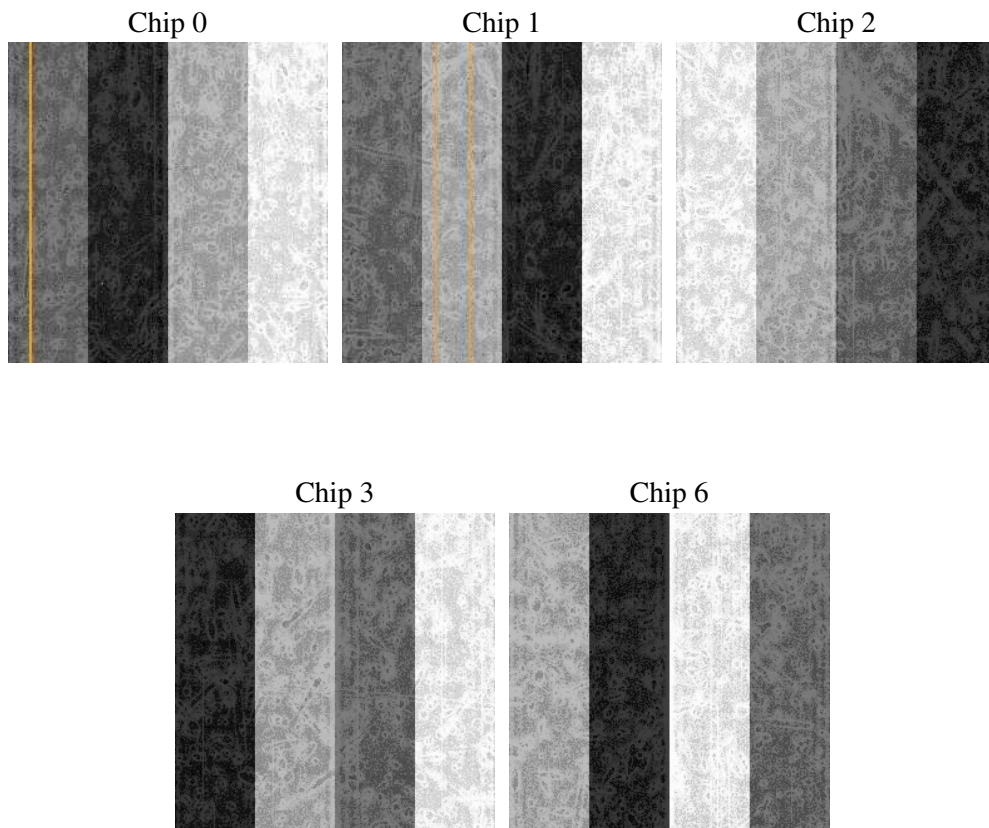
2 OBI

2.1 OBI

2.1.1 Images



2.1.2 Bias



2.1.3 Parameters

obi_num	1
ascdsver	7.6.8
caldsver	3.2.2
date	2006-07-29T21:55:37
revision	2

sched_exp_time	5000.000000
ontime	4777.4746514261
ontime0	4780.6156715155
ontime1	4780.6156715155
ontime2	4780.6156516075
ontime3	4777.4746514261
ontime6	4780.6156516075
l1events	116816

2.1.4 Events

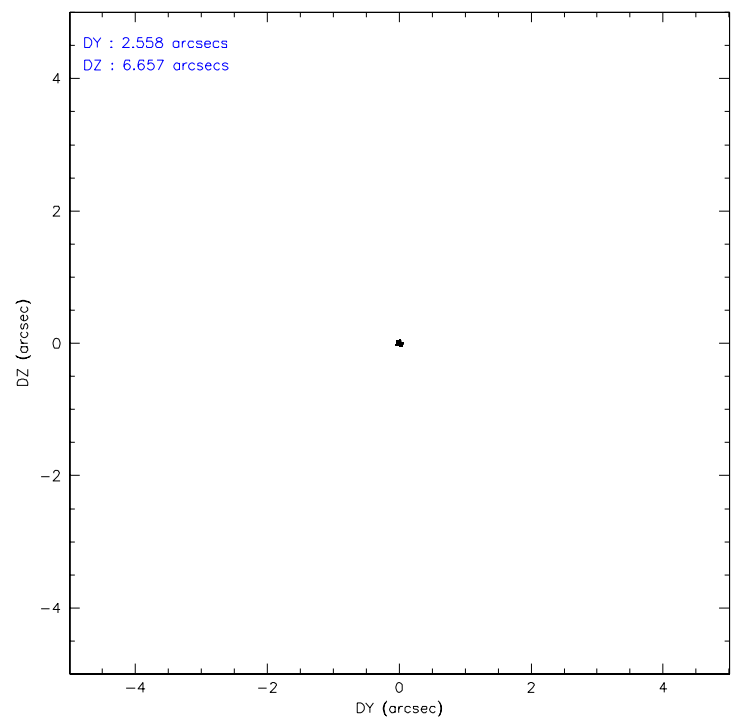
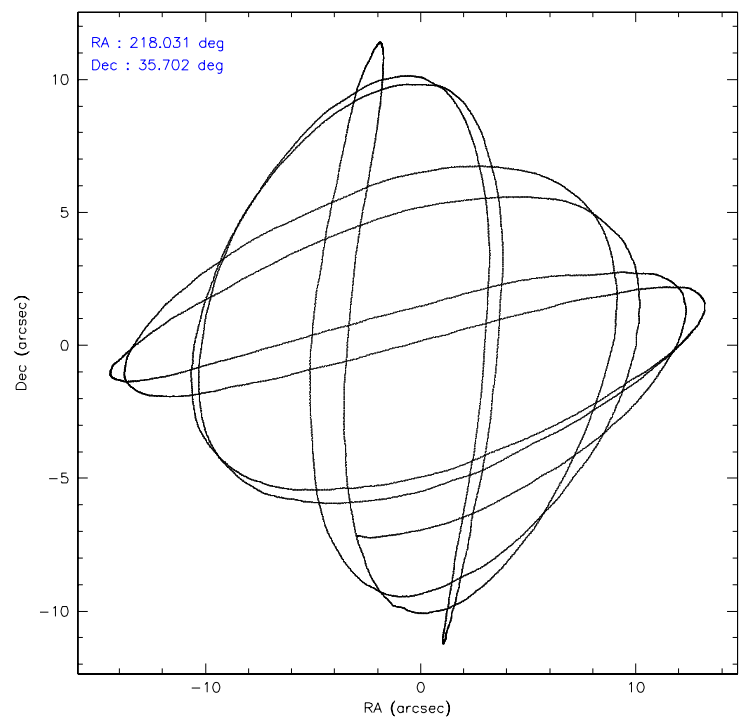
	ccd 0	ccd 1	ccd 2	ccd 3	ccd 6
level 1 events	21727	22037	25827	24478	22747
rejected events	19347	19473	23389	22308	20438
rejected %	89%	88%	90%	91%	89%

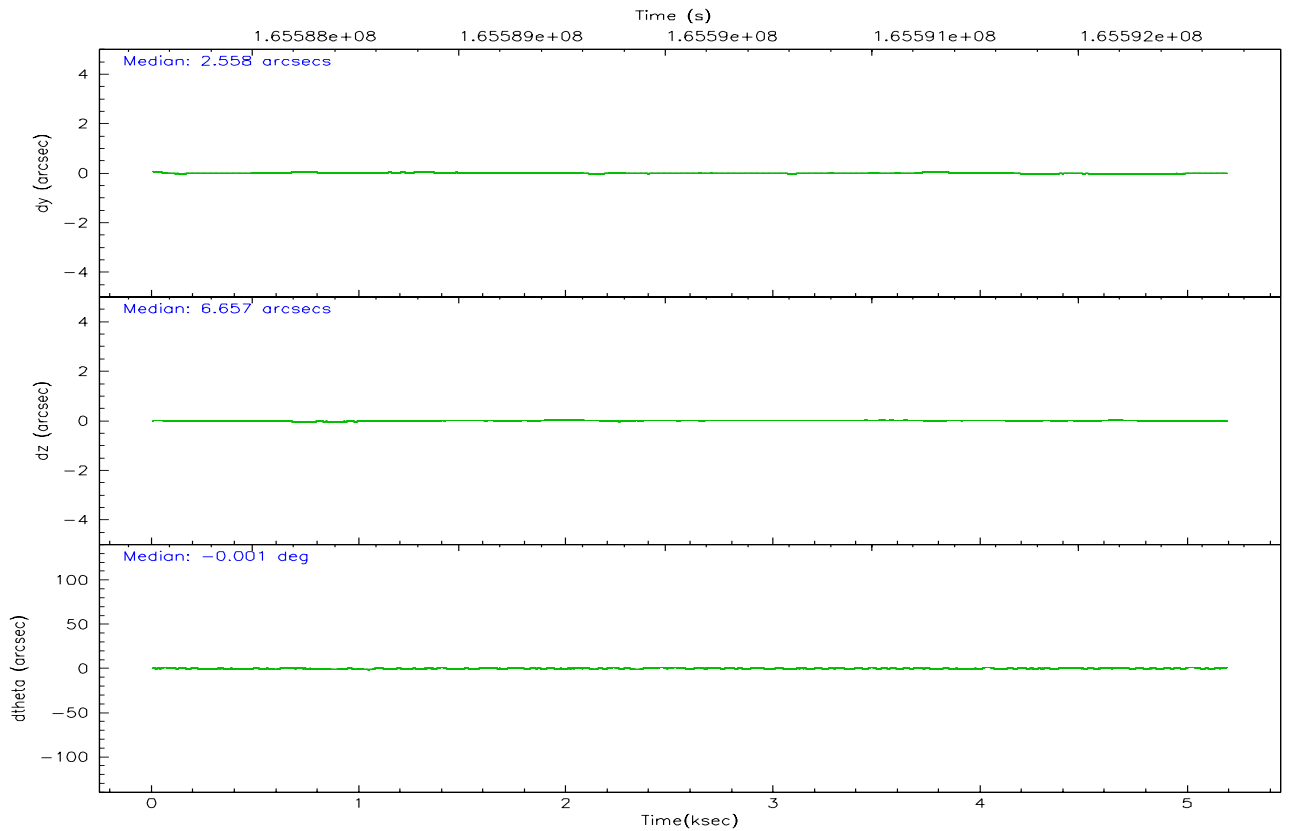
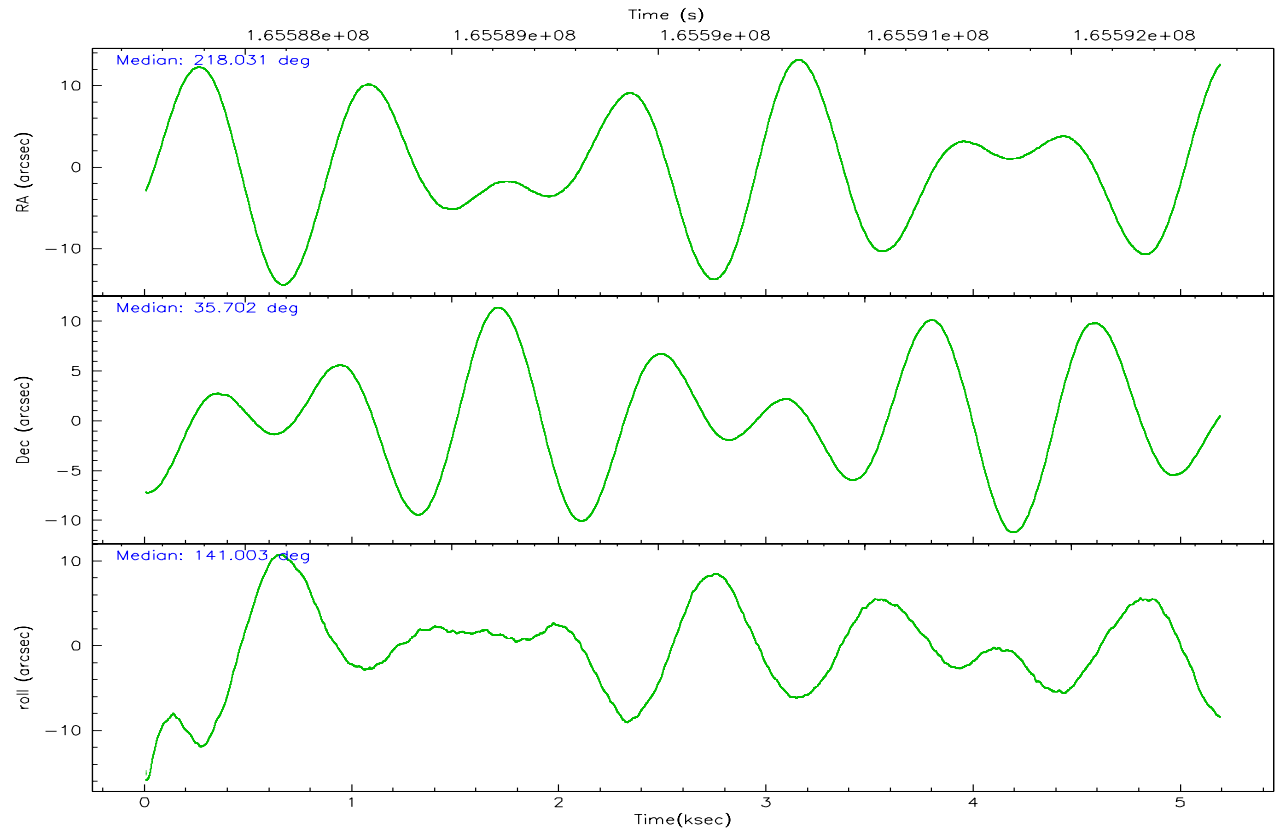
	ccd 0	ccd 1	ccd 2	ccd 3	ccd 6
grade 0 events	923	954	928	801	856
	4%	4%	3%	3%	3%
grade 1 events	13	17	10	15	14
	0%	0%	0%	0%	0%
grade 2 events	528	537	546	449	469
	2%	2%	2%	1%	2%
grade 3 events	271	259	289	257	251
	1%	1%	1%	1%	1%
grade 4 events	248	295	280	265	264
	1%	1%	1%	1%	1%
grade 5 events	646	763	650	760	732
	2%	3%	2%	3%	3%
grade 6 events	416	523	397	402	472
	1%	2%	1%	1%	2%
grade 7 events	18682	18689	22727	21529	19689
	85%	84%	87%	87%	86%

2.2 Compared Parameters

Parameter	Planned	Actual	Parameter	Planned	Actual
Instrument	ACIS	ACIS	Obspar format version number	6	6
Detector	ACIS-01236	ACIS-01236	Obspar file type	PREDICTED	ACTUAL
Grating	NONE	NONE	Obspar update status	NONE	UPDATED
Data mode	VFAINT	VFAINT	On-chip summing requested	N	N
Observation mode	POINTING	POINTING	Subarray requested	NONE	NONE
Pointing RA	218.064658	218.0313718277243	Alternating exposures requested	N	N
Pointing Dec	35.697473	35.70157301098793	Primary exposure time	0.000000	3.1
Pointing Roll	140.782117	141.0102329573891			
SIM focus pos (mm)	-0.782348	-0.7809083437167272			
SIM defocus (mm)	0	0.001439871863259334			
SIM translation stage pos (mm)	-233.592463	-233.5874344608287			
SIM translation stage offset (mm)	0	-0.005018542100998502			
Observation start time	165587714.184000	165587338.55824			
Observation start date	2003-04-01T12:34:10	2003-04-01T12:28:58			
Observation end time	165592714.184000	165592917.12097			
Observation end date	2003-04-01T13:57:30	2003-04-01T14:01:57			
Read mode	TIMED	TIMED			

2.3 Aspect



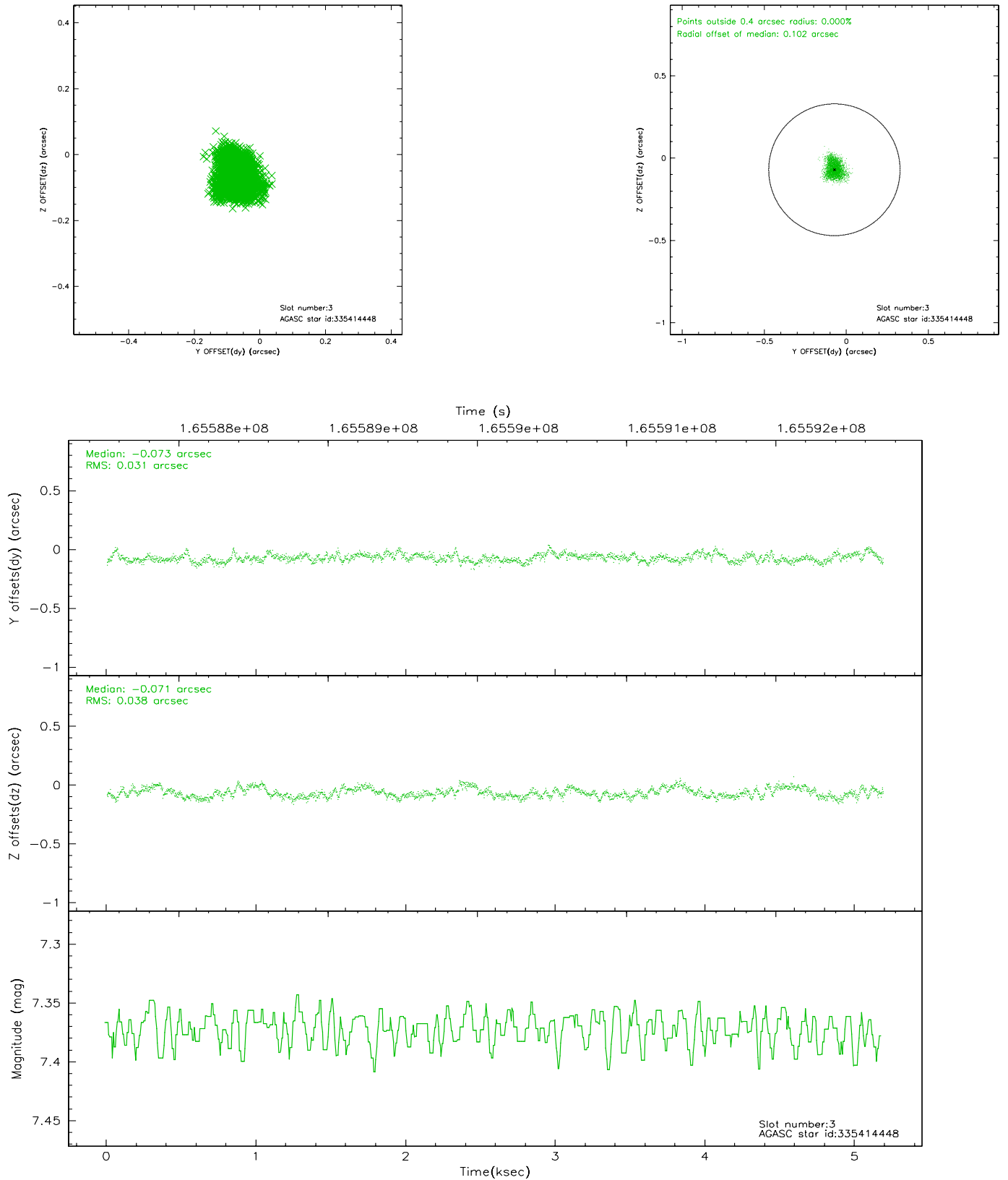


Slot Statistics

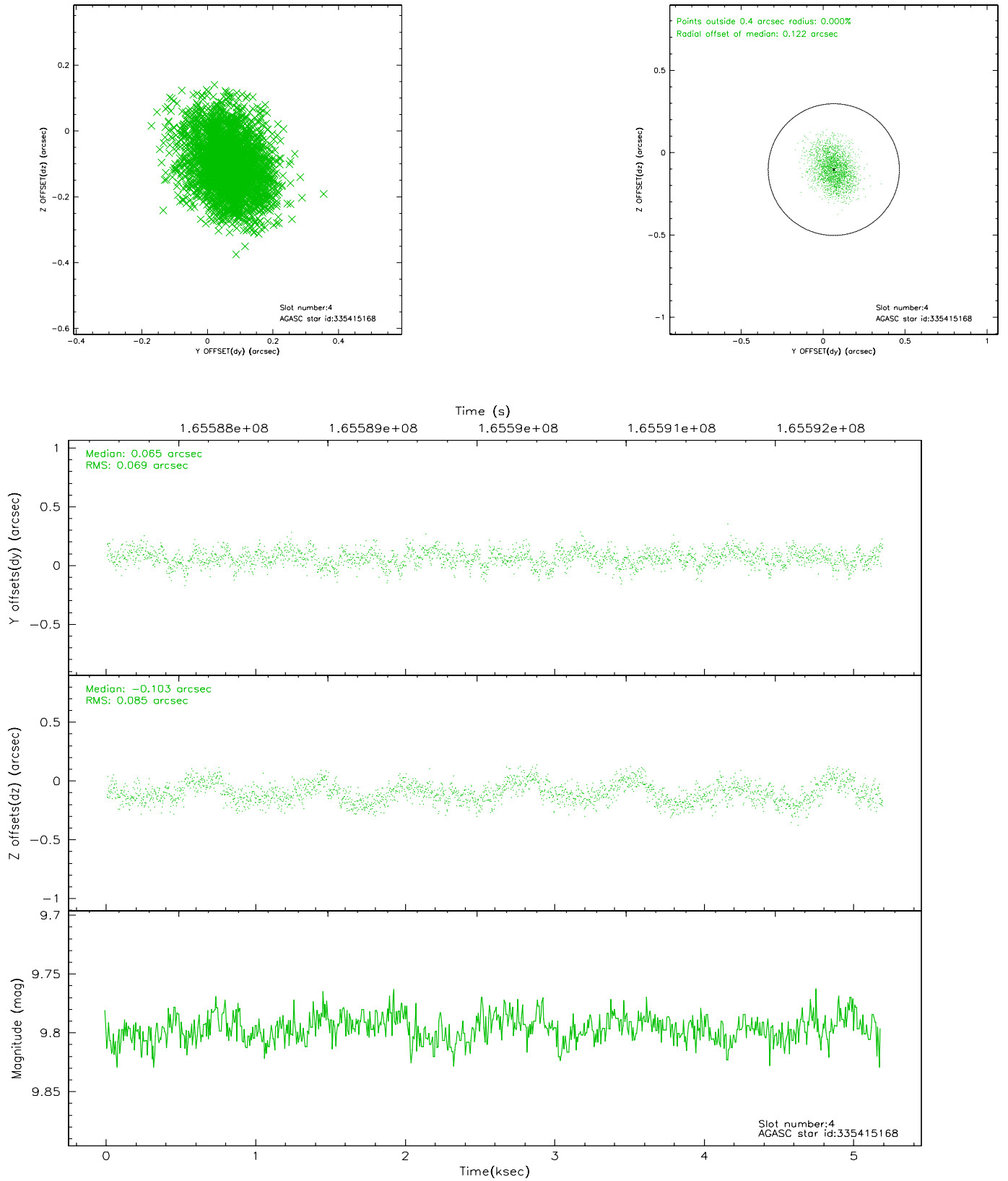
slot	status	id	mag	n_pts	med_dy	med_dz	dr1	dr2	ra	dec	mean_y	mean_z
0	FID	ACIS-I-1	7.25	1265	-0.007	0.021	0.006	0.010	0.000000	0.000000	937.22	-830.04
1	FID	ACIS-I-5	7.24	1265	-0.054	0.044	0.005	0.009	0.000000	0.000000	-1810.24	1066.95
2	FID	ACIS-I-6	7.26	1265	-0.031	0.005	0.006	0.011	0.000000	0.000000	401.53	1712.69
3	GUIDE	335414448	7.37	2531	-0.073	-0.071	0.054	0.086	216.992261	35.577204	2169.44	2307.75
4	GUIDE	335415168	9.80	2528	0.065	-0.103	0.118	0.186	217.681296	35.301767	-25.29	1815.06
5	GUIDE	335421608	9.19	2530	-0.016	0.066	0.111	0.174	217.691874	36.359353	2345.87	-1163.29
6	GUIDE	335421696	8.95	2528	-0.011	0.138	0.080	0.124	218.045699	35.772449	214.64	-174.49
7	GUIDE	335422272	9.47	2530	0.035	-0.034	0.089	0.141	217.586135	35.522660	690.83	1371.18

2.4 Star Slots

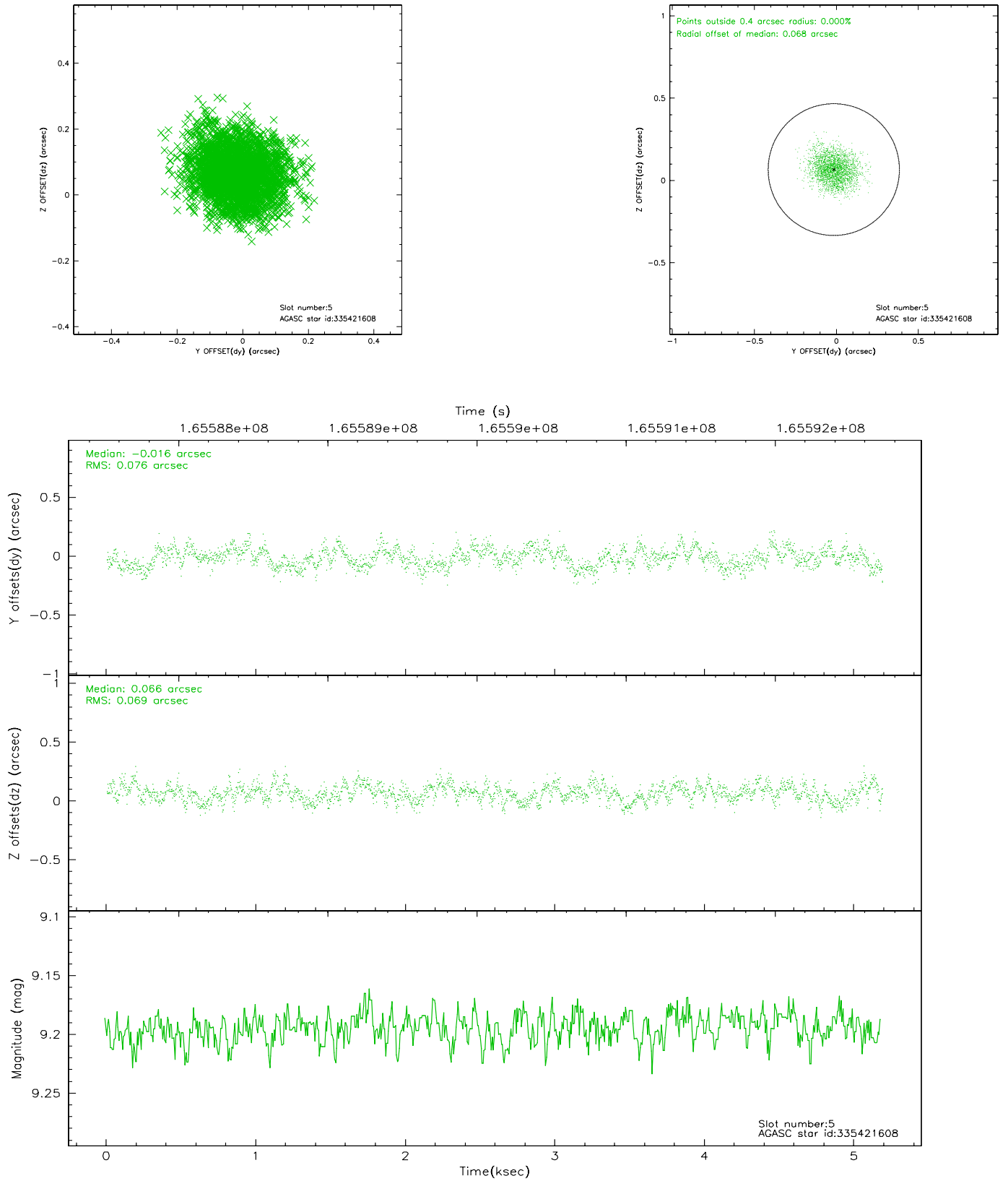
2.4.1 Slot 3



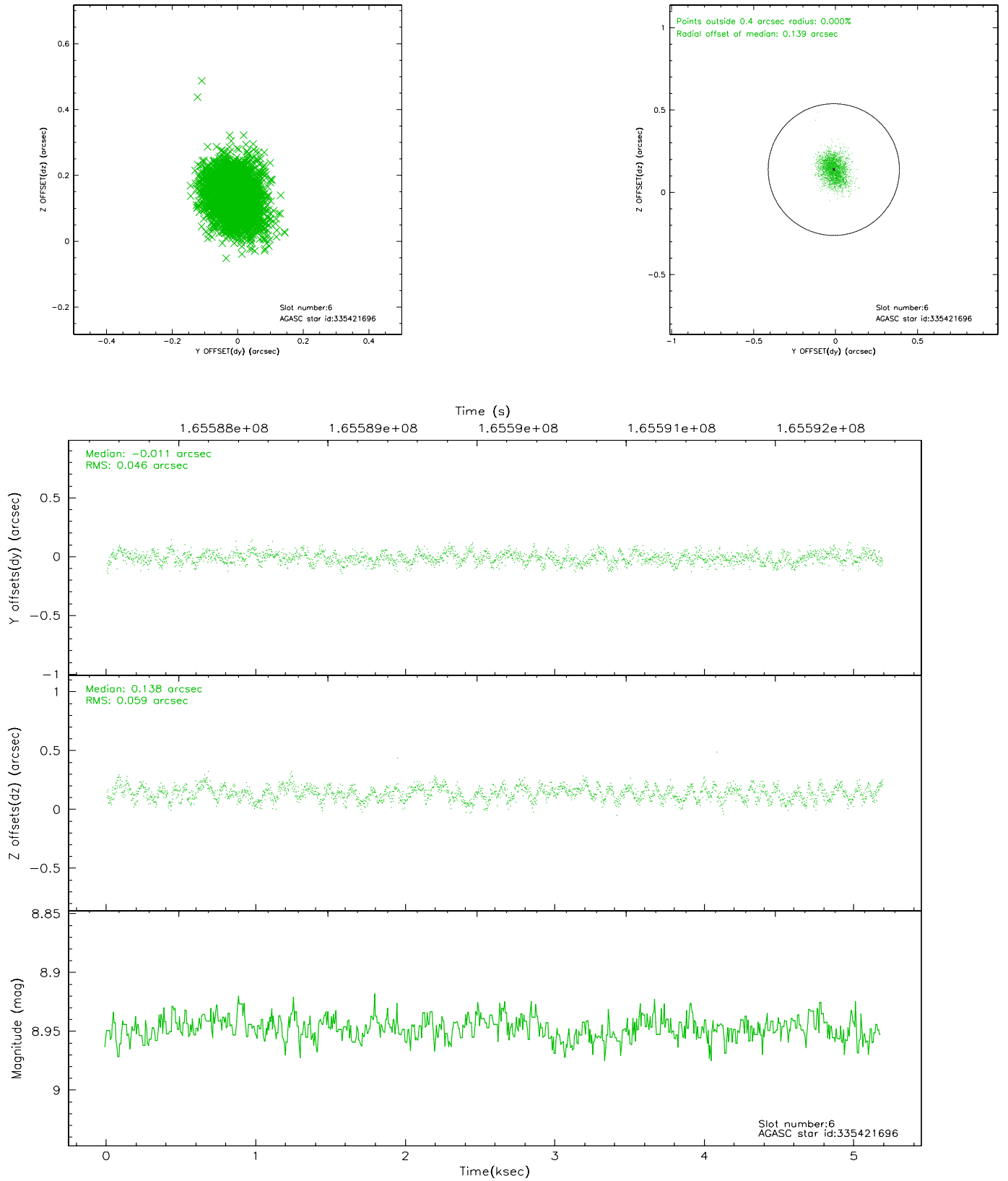
2.4.2 Slot 4



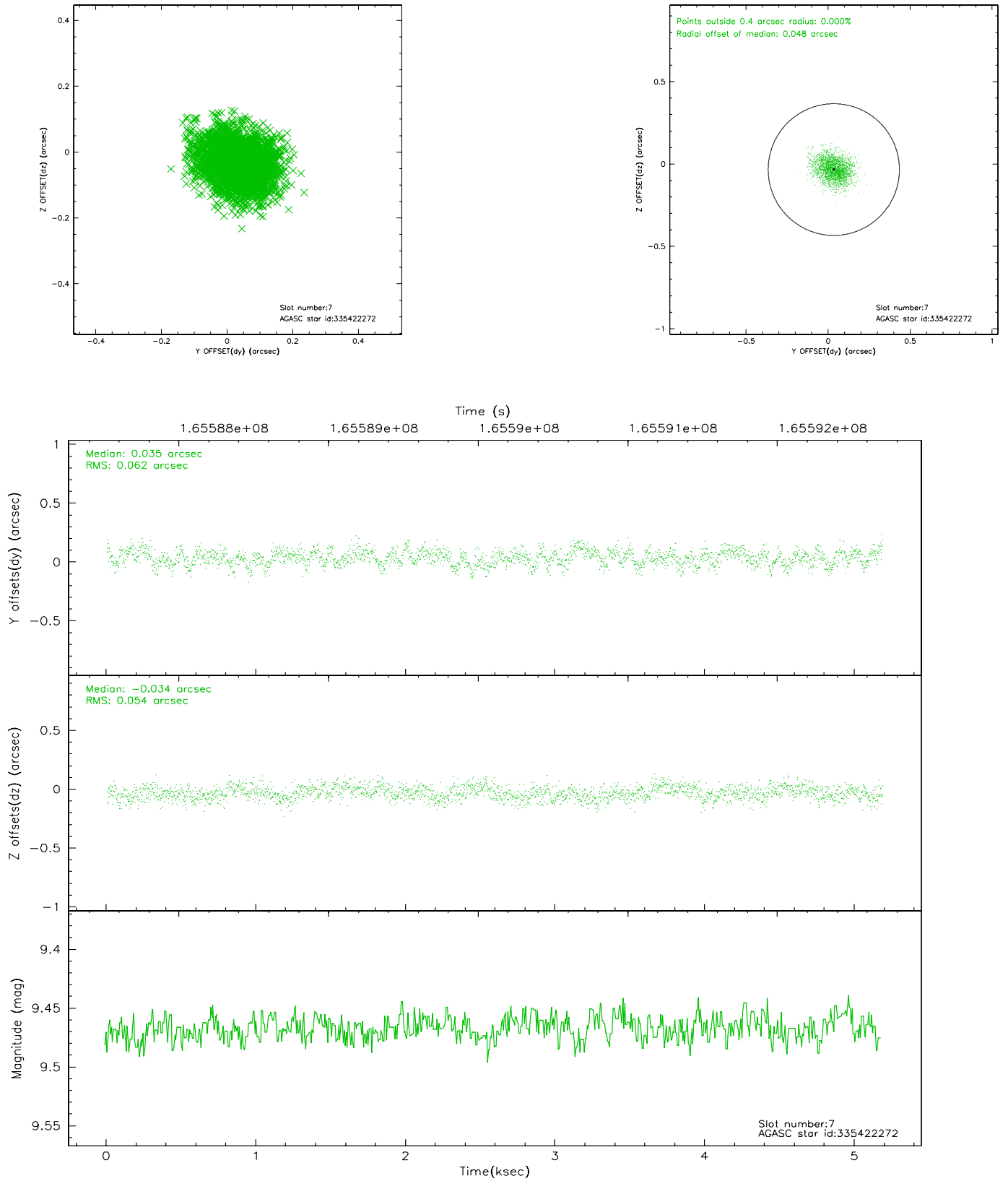
2.4.3 Slot 5



2.4.4 Slot 6

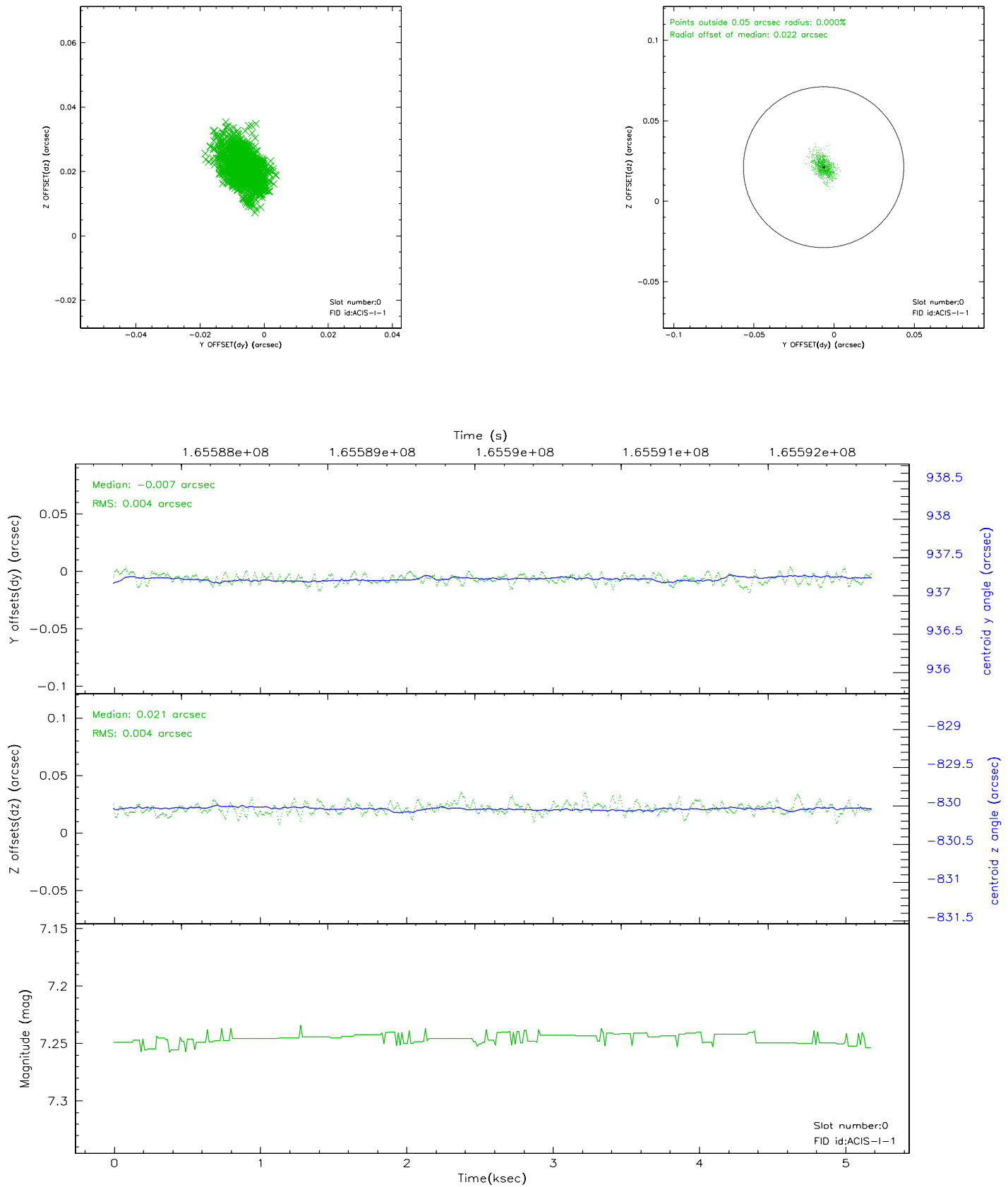


2.4.5 Slot 7

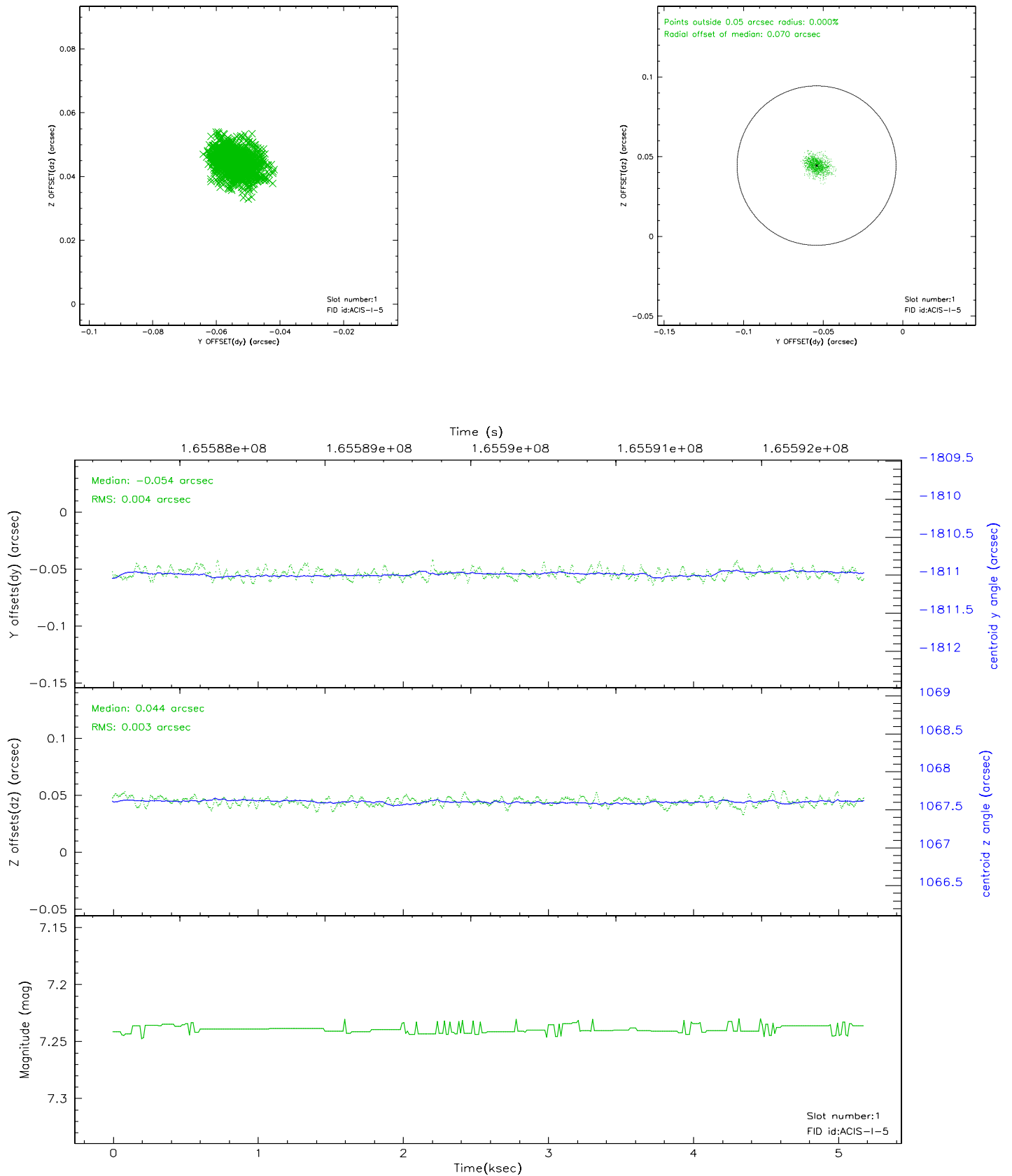


2.5 FID Slots

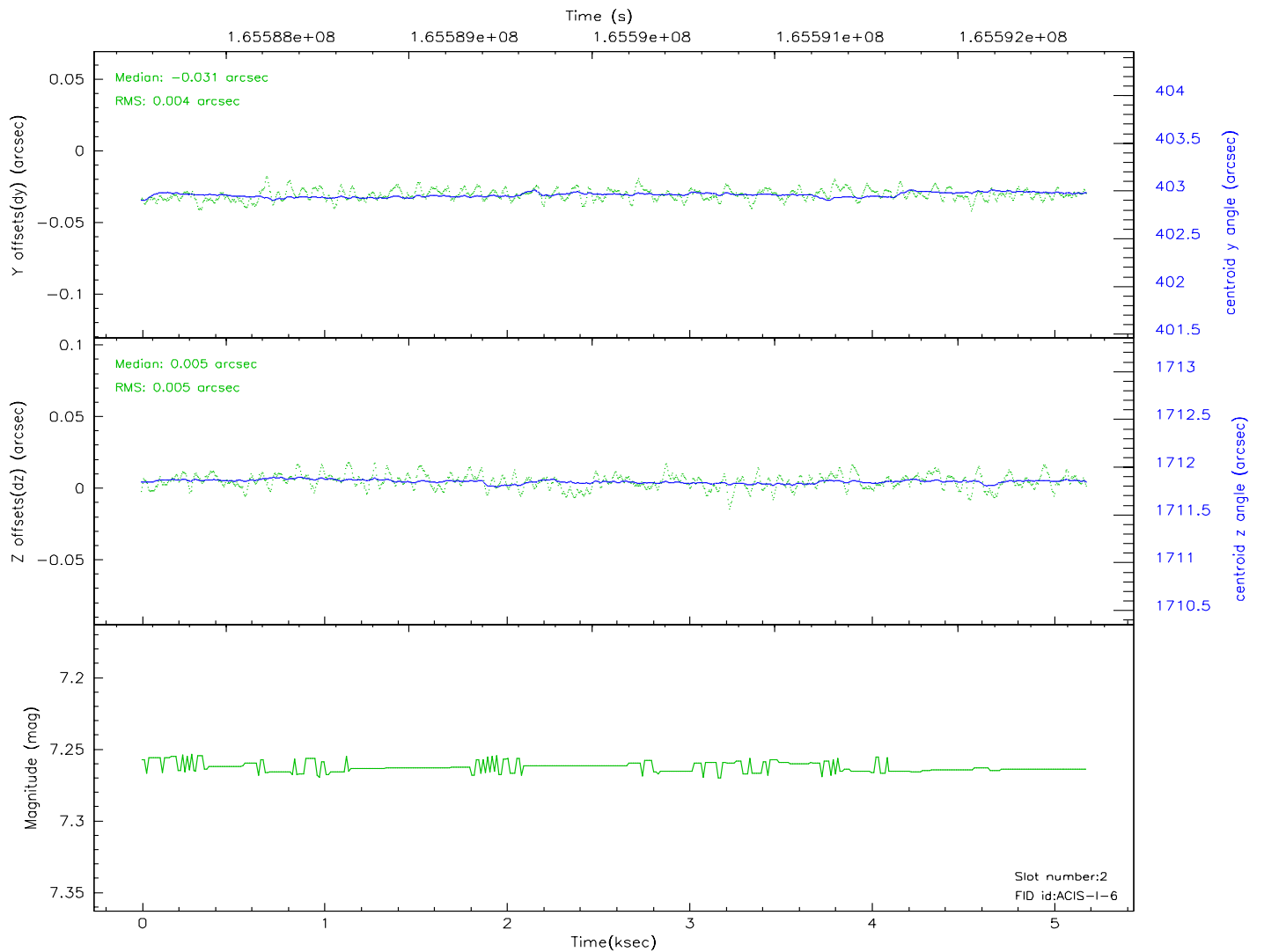
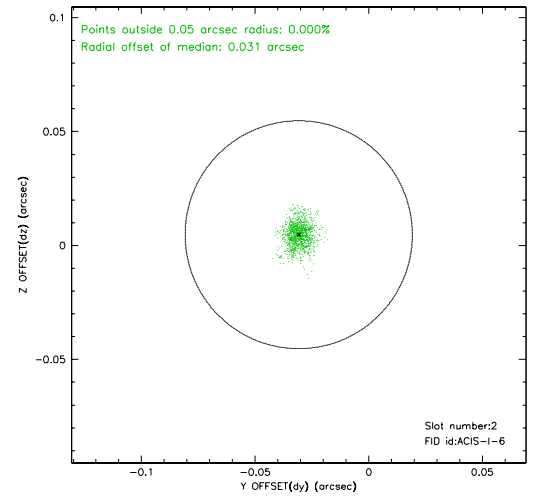
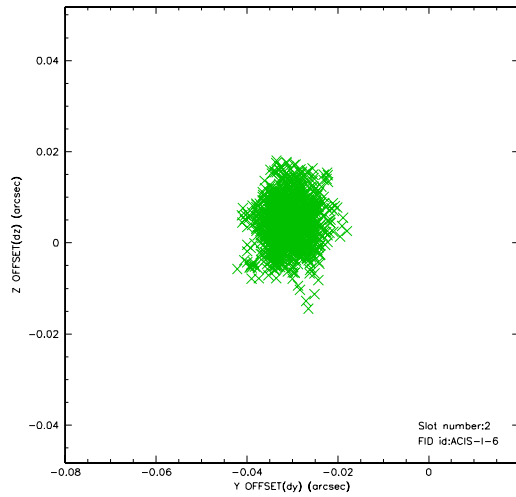
2.5.1 Slot 0



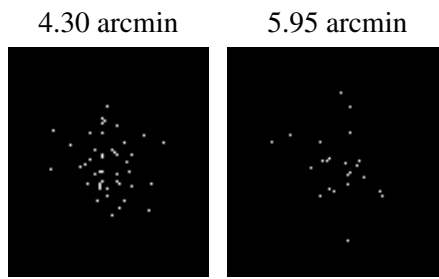
2.5.2 Slot 1



2.5.3 Slot 2



3 Point Sources



A Summary

A.1 Status

V&V Scientist	Jen Lauer
V&V Date (YYYY-MM-DD)	2006.07.30
V&V Edition	1
V&V Disposition and Status	OK
V&V Charge Time	4.78

A.2 Comments