

V&V Reference Report

L2 ASCDS Version : 7.6.8

Observation 3580 - L2 Version 001
Chandra X-Ray Center

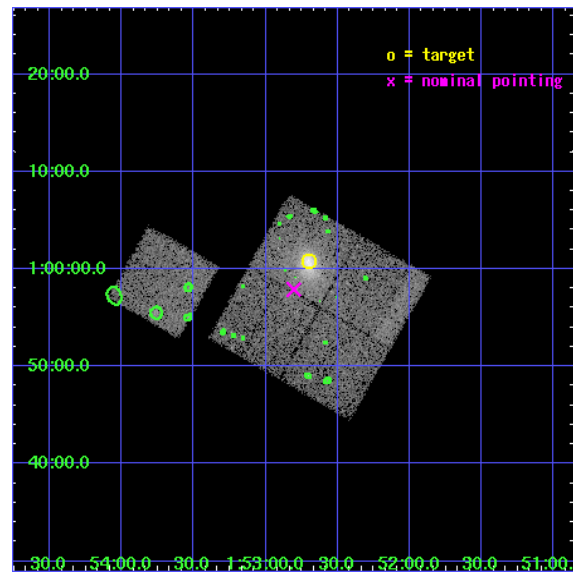
L2 Processing Date : Jun 23 2006

Contents

1	Front	2
2	OBI	3
2.1	OBI	3
2.1.1	Images	3
2.1.2	Bias	3
2.1.3	Parameters	4
2.1.4	Events	4
2.2	Compared Parameters	5
2.3	Aspect	6
2.4	Star Slots	9
2.4.1	Slot 3	9
2.4.2	Slot 4	10
2.4.3	Slot 5	11
2.4.4	Slot 6	12
2.4.5	Slot 7	13
2.5	FID Slots	14
2.5.1	Slot 0	14
2.5.2	Slot 1	15
2.5.3	Slot 2	16
3	Point Sources	17
A	Summary	18
A.1	Status	18
A.2	Comments	18

1 Front

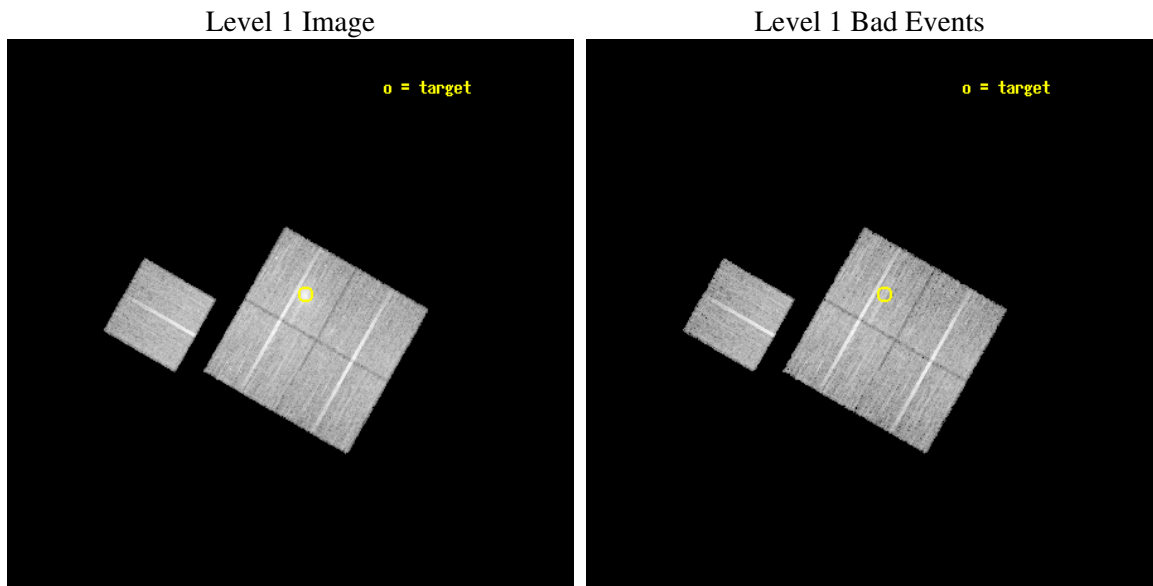
seq_num	800301
obs_id	3580
title	X-RAY/SZ DETERMINATION OF COSMOLOGICAL PARAMETERS
observer	DR. LEON VANSPEYBROECK
object	A267
dtcycle	0
cycle	P
ra_targ	28.175833
dec_targ	1.013
ra_nom	28.201067622457
dec_nom	0.96491041371089
roll_nom	299.76098332076
revision	2
ontime	20143.799961269
livetime	19880.606385125
ontime0	20143.799961269
ontime1	20143.799961269
ontime2	20143.799961269
ontime3	20143.799961269
ontime6	20143.799961269
l2events	60575



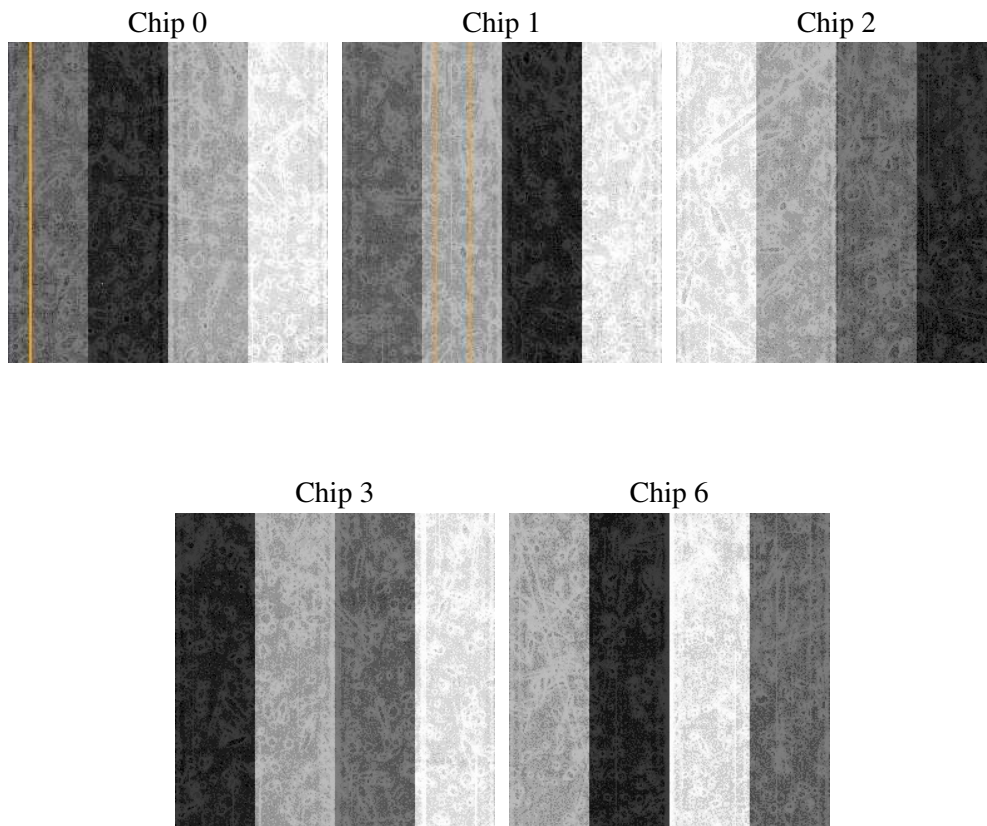
2 OBI

2.1 OBI

2.1.1 Images



2.1.2 Bias



2.1.3 Parameters

obi_num	0
ascdsver	7.6.8
caldbver	3.2.2
date	2006-06-23T11:43:36
revision	2

sched_exp_time	20000.000000
ontime	22122.118509114
ontime0	22122.118489176
ontime1	22122.118489176
ontime2	22122.118489176
ontime3	22122.118509114
ontime6	22122.118489176
l1events	547051

2.1.4 Events

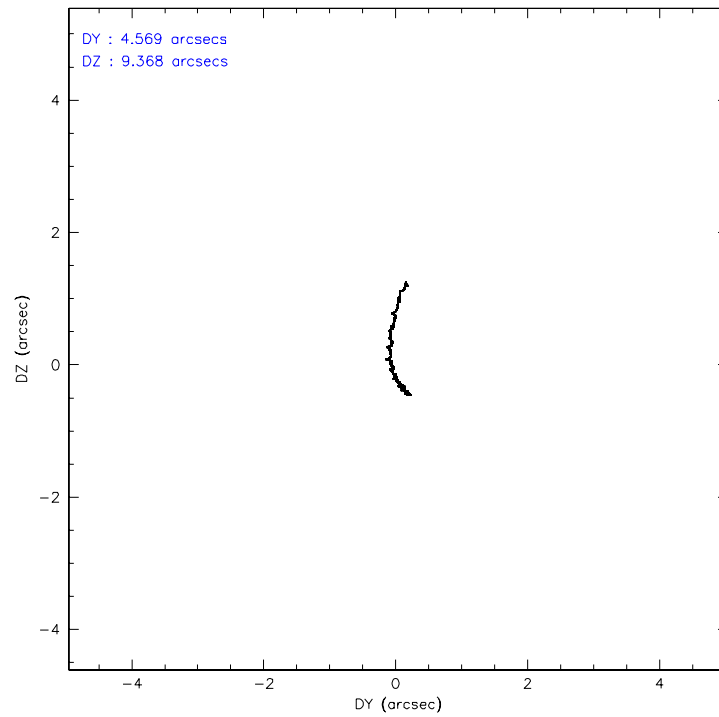
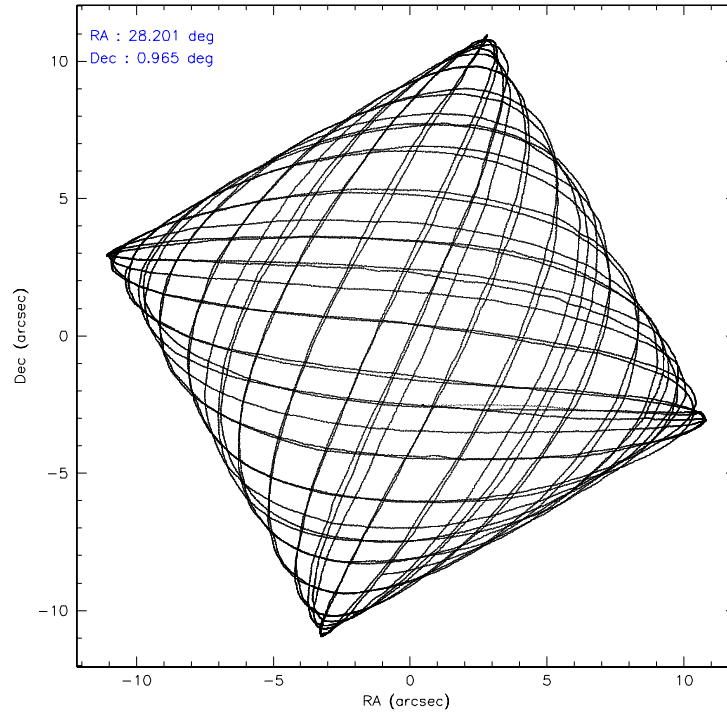
	ccd 0	ccd 1	ccd 2	ccd 3	ccd 6
level 1 events	99977	102085	115678	121705	107606
rejected events	88911	89078	103963	99382	95319
rejected %	88%	87%	89%	81%	88%

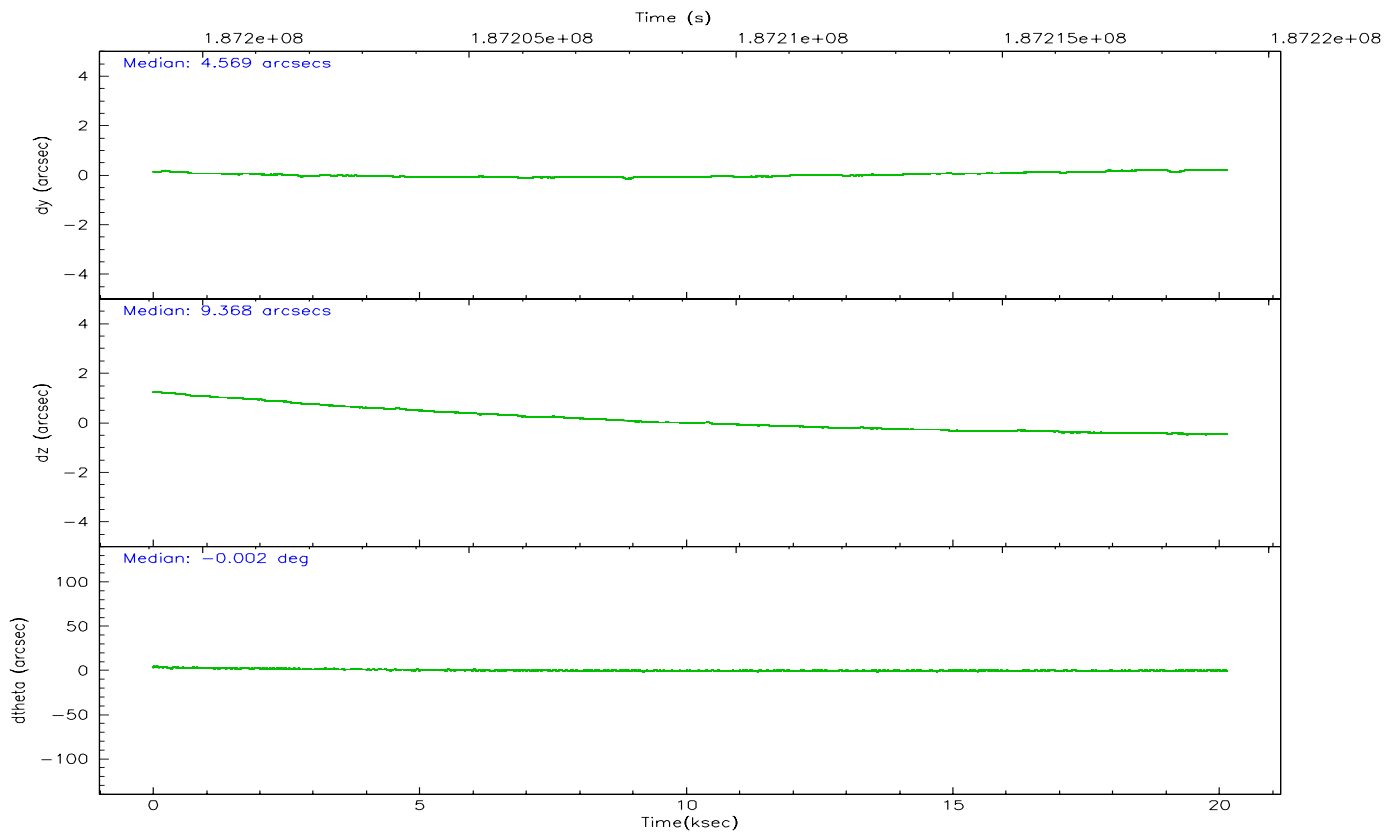
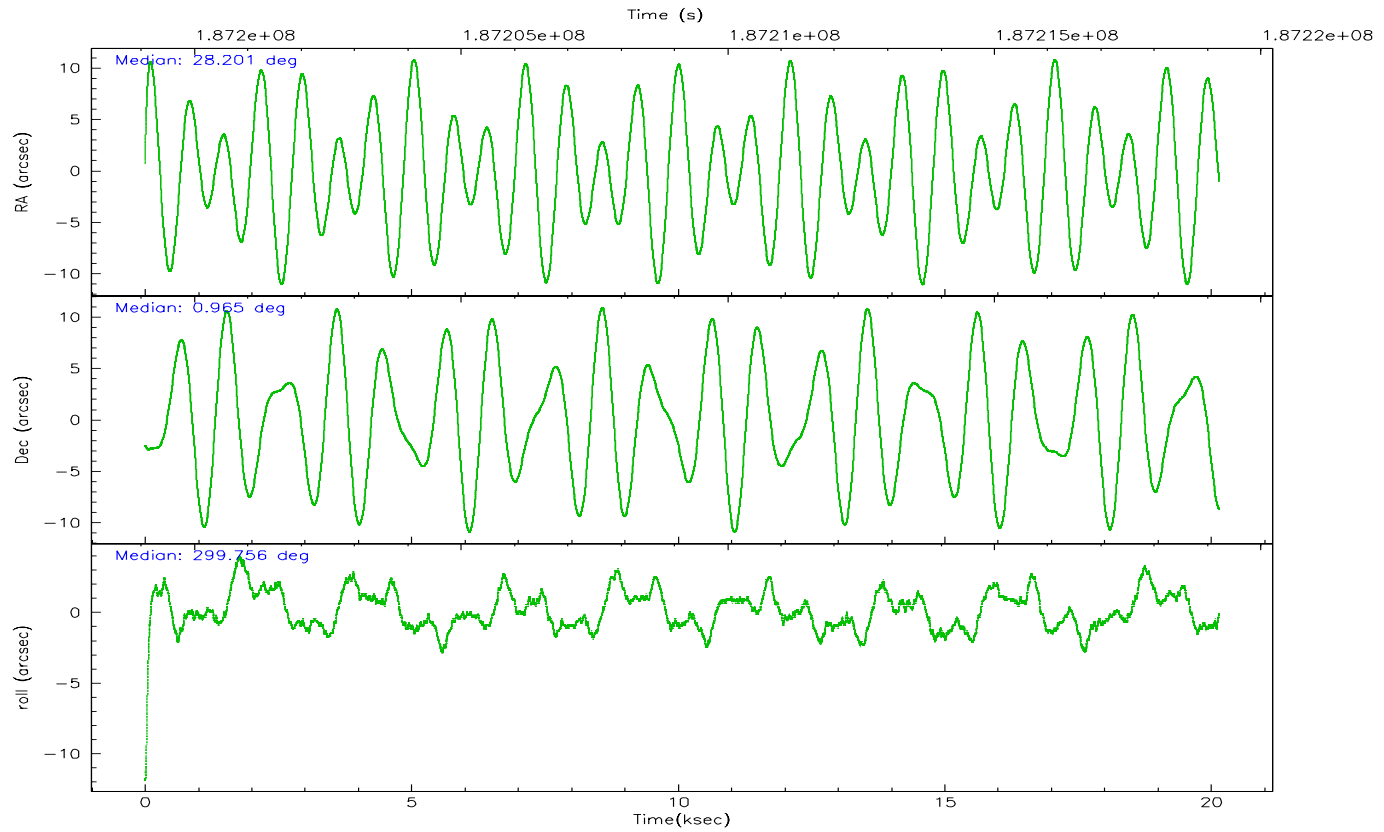
	ccd 0	ccd 1	ccd 2	ccd 3	ccd 6
grade 0 events	4953	5897	5451	14517	5893
	4%	5%	4%	11%	5%
grade 1 events	48	45	72	90	54
	0%	0%	0%	0%	0%
grade 2 events	2580	3029	2791	3532	2567
	2%	2%	2%	2%	2%
grade 3 events	1309	1396	1283	1616	1318
	1%	1%	1%	1%	1%
grade 4 events	1248	1315	1327	1523	1332
	1%	1%	1%	1%	1%
grade 5 events	3846	4034	3583	4274	4398
	3%	3%	3%	3%	4%
grade 6 events	2091	2641	2029	2359	2455
	2%	2%	1%	1%	2%
grade 7 events	83902	83728	99142	93794	89589
	83%	82%	85%	77%	83%

2.2 Compared Parameters

Parameter	Planned	Actual	Parameter	Planned	Actual
Instrument	ACIS	ACIS	Obspar format version number	6	6
Detector	ACIS-01236	ACIS-01236	Obspar file type	PREDICTED	ACTUAL
Grating	NONE	NONE	Obspar update status	NONE	UPDATED
Data mode	VFAINT	VFAINT	On-chip summing requested	N	N
Observation mode	POINTING	POINTING	Subarray requested	NONE	NONE
Pointing RA	28.177335	28.20106762245699	Alternating exposures requested	N	N
Pointing Dec	0.978593	0.9649104137108855	Primary exposure time	0.000000	3.1
Pointing Roll	299.552710	299.7609833207641			
SIM focus pos (mm)	-0.782348	-0.7809083437167272			
SIM defocus (mm)	0	0.001439871863259334			
SIM translation stage pos (mm)	-225.840463	-225.8433433320239			
SIM translation stage offset (mm)	-7.752	-7.749109670905796			
Observation start time	187199217.184000	187197093.14398			
Observation start date	2003-12-07T15:45:53	2003-12-07T15:11:33			
Observation end time	187219217.184000	187220336.04499			
Observation end date	2003-12-07T21:19:13	2003-12-07T21:38:56			
Read mode	TIMED	TIMED			

2.3 Aspect



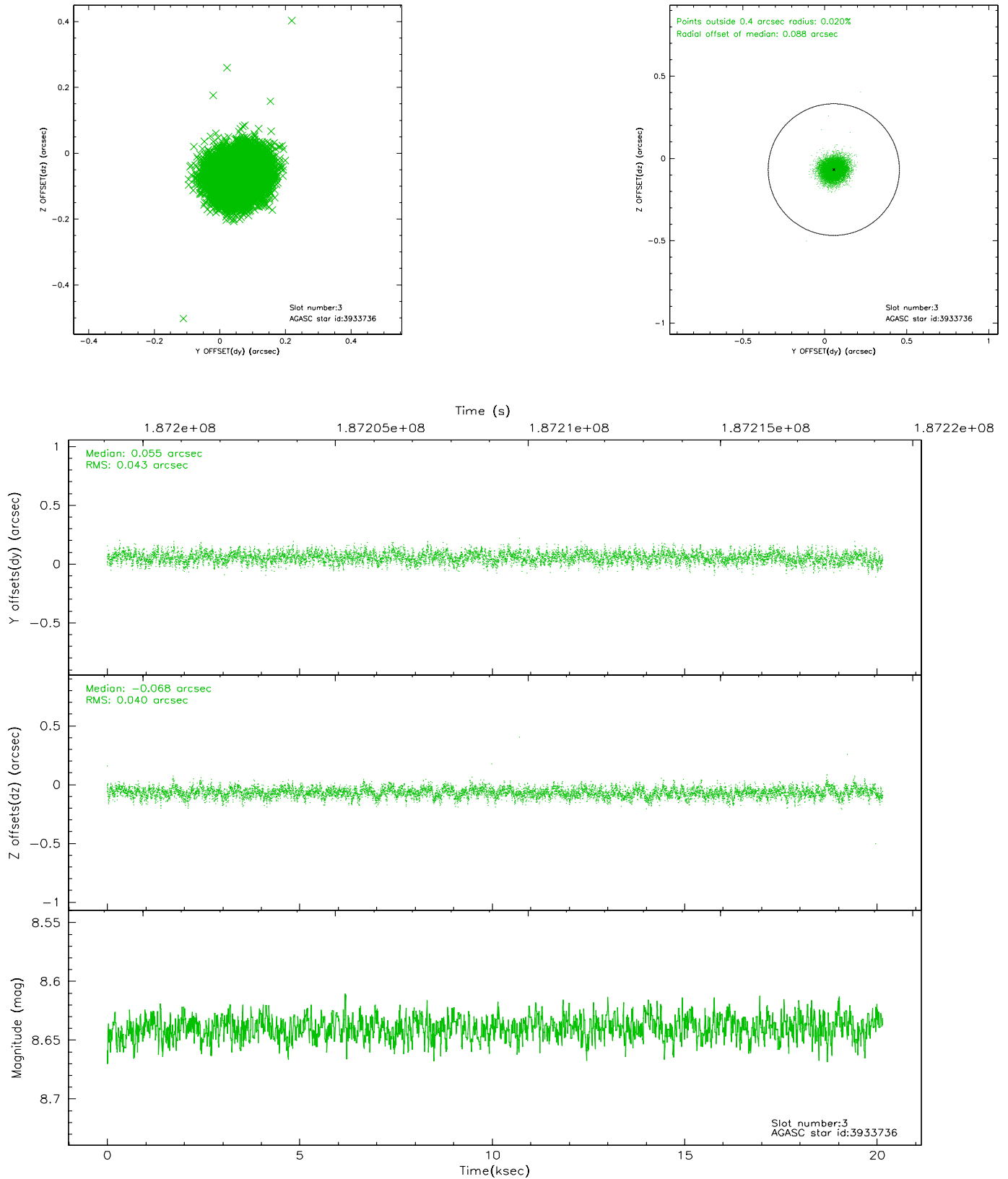


Slot Statistics

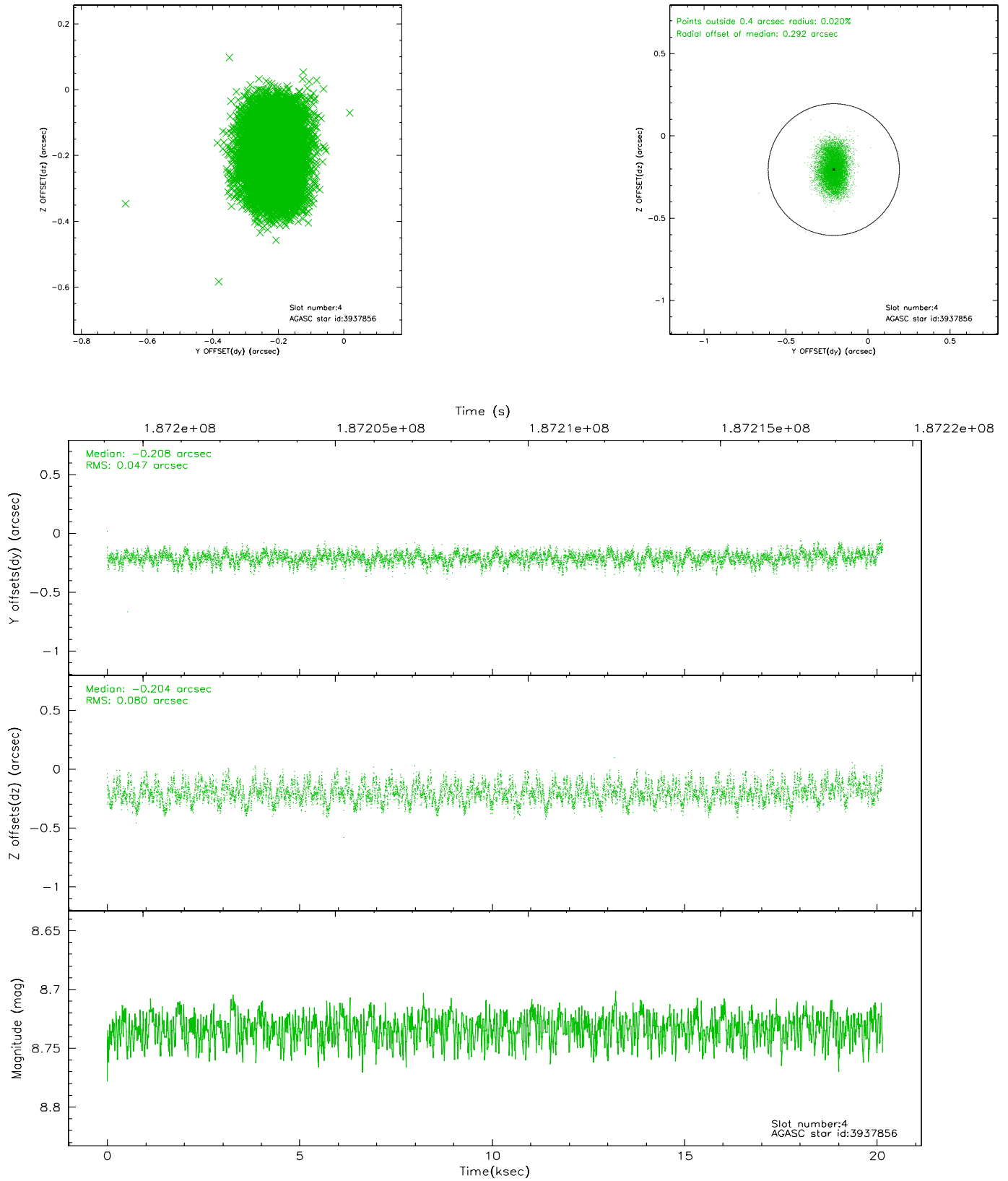
slot	status	id	mag	n_pts	med_dy	med_dz	dr1	dr2	ra	dec	mean_y	mean_z
0	FID	ACIS-I-1	7.23	4915	0.059	-0.038	0.012	0.028	0.000000	0.000000	935.07	-992.08
1	FID	ACIS-I-5	7.22	4916	-0.213	0.059	0.010	0.020	0.000000	0.000000	-1813.20	905.39
2	FID	ACIS-I-6	7.24	4916	0.062	0.049	0.011	0.019	0.000000	0.000000	400.42	1550.10
3	GUIDE	3933736	8.64	9828	0.055	-0.068	0.063	0.101	28.335603	0.387418	2132.63	-553.88
4	GUIDE	3937856	8.73	9828	-0.208	-0.204	0.099	0.160	27.502239	0.986318	-1222.56	-2100.29
5	GUIDE	3932200	9.32	9827	0.077	0.048	0.086	0.139	28.826564	0.608712	2310.86	1376.51
6	GUIDE	3939408	9.59	9819	-0.141	-0.044	0.140	0.229	28.595614	1.577682	-1133.87	2373.37
7	GUIDE	3939256	9.93	9823	0.218	0.268	0.148	0.228	28.955841	0.906301	1608.37	2310.32

2.4 Star Slots

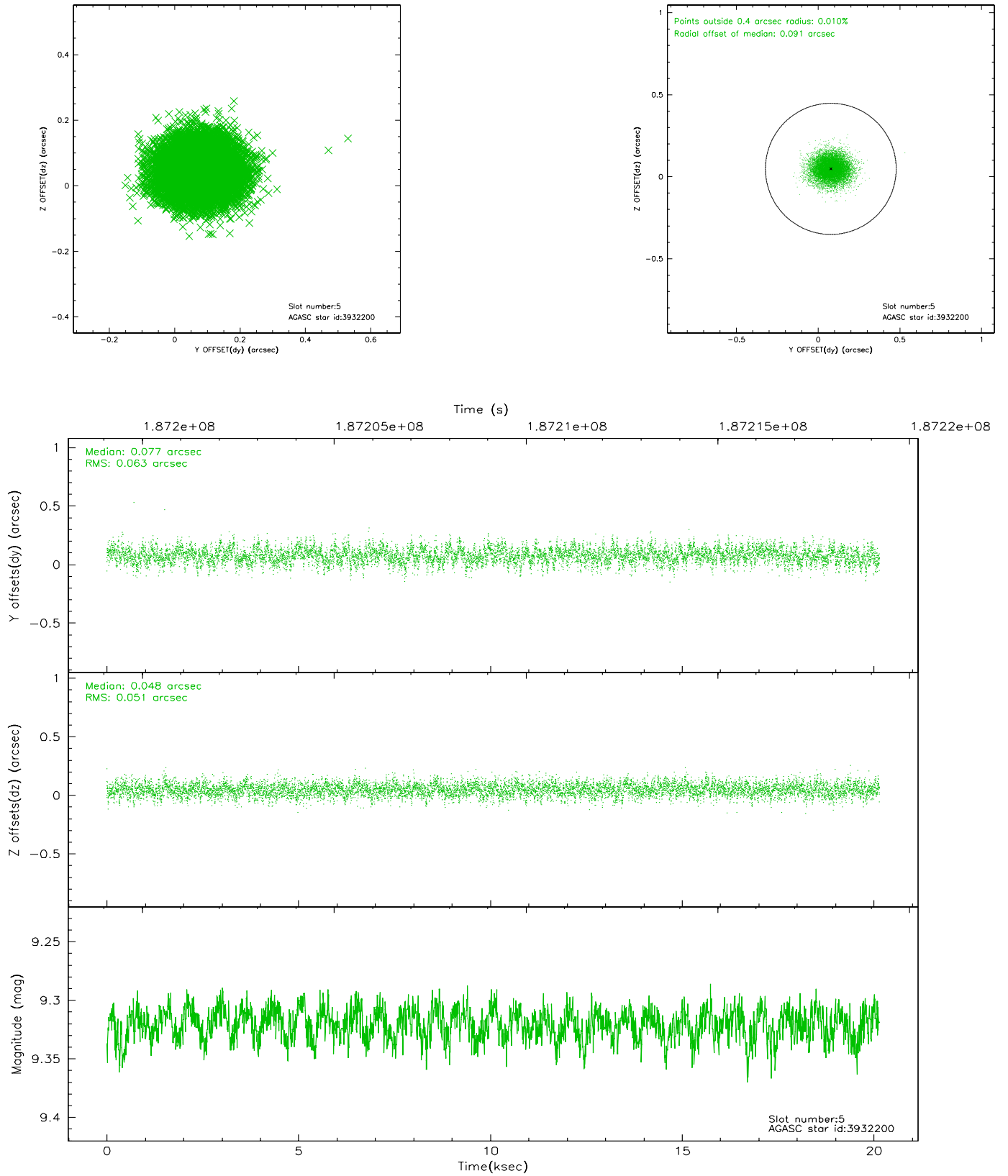
2.4.1 Slot 3



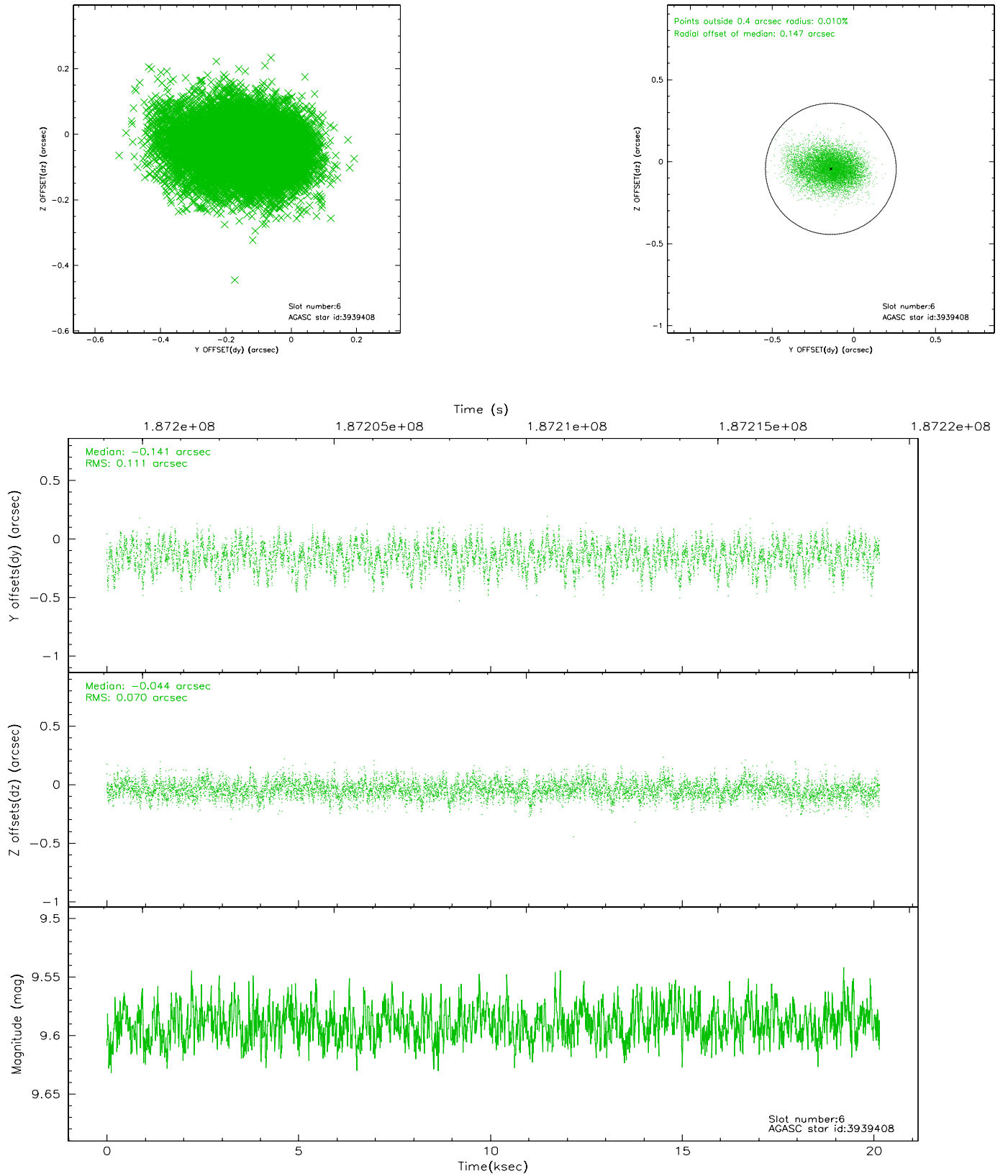
2.4.2 Slot 4



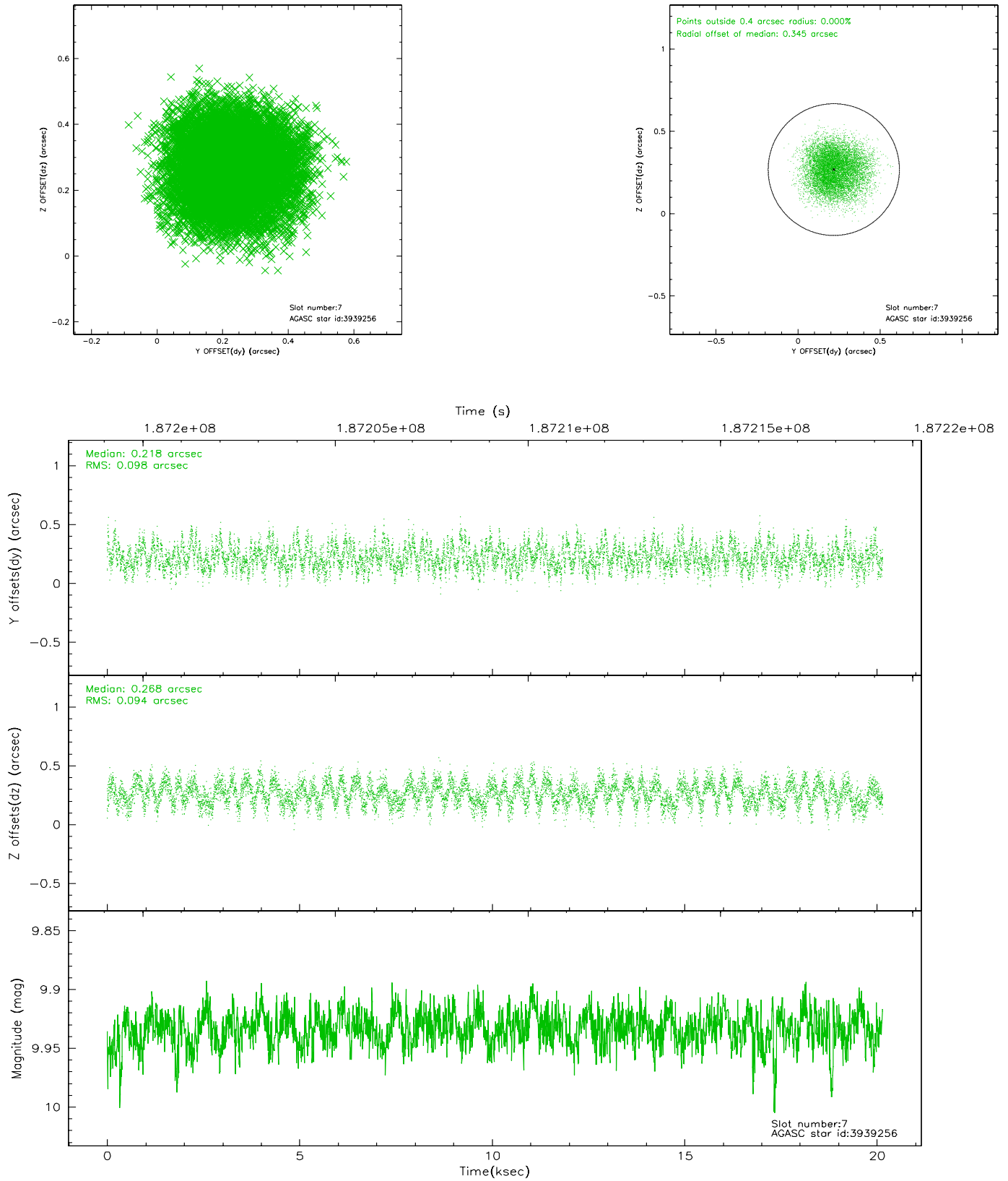
2.4.3 Slot 5



2.4.4 Slot 6

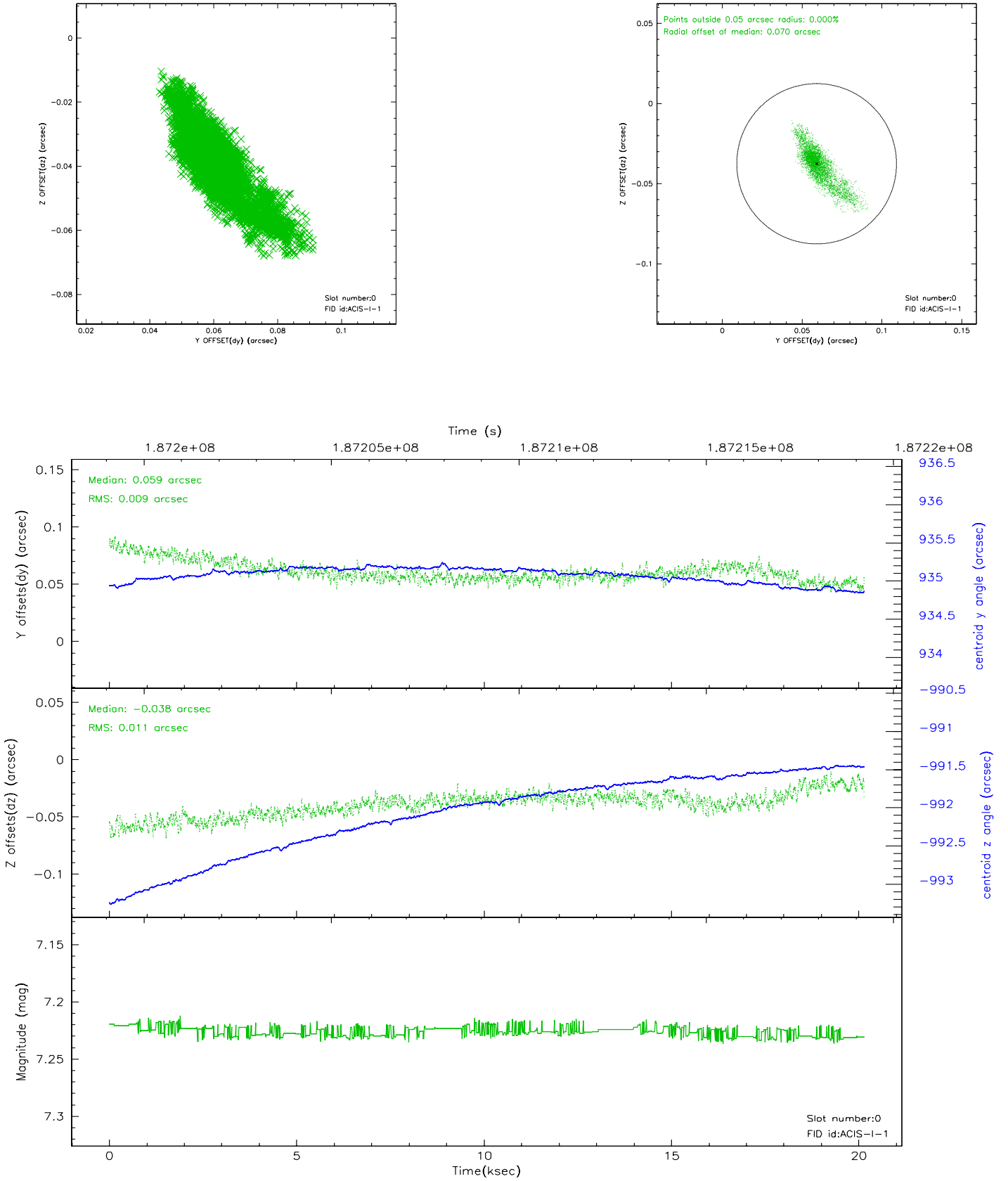


2.4.5 Slot 7

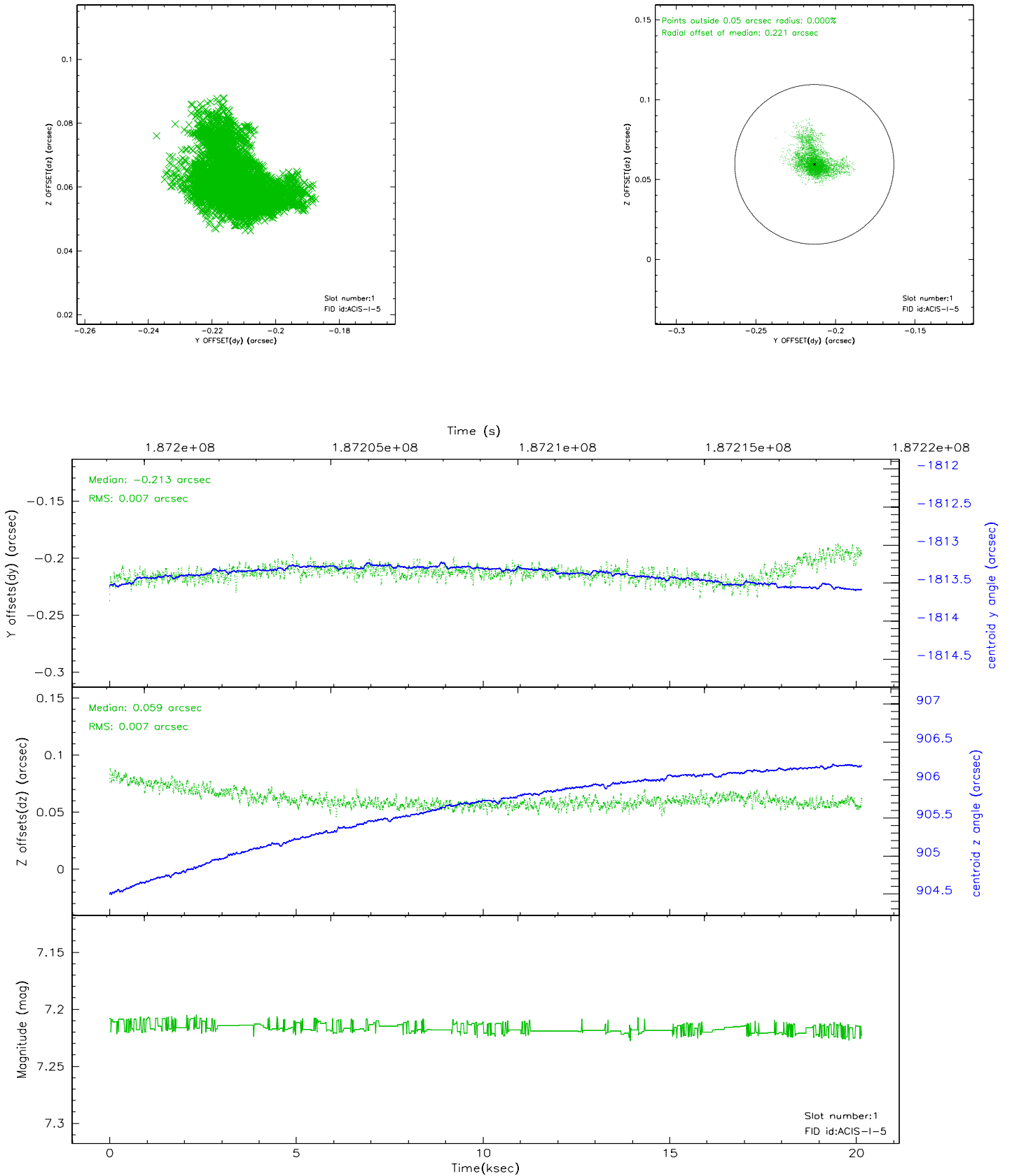


2.5 FID Slots

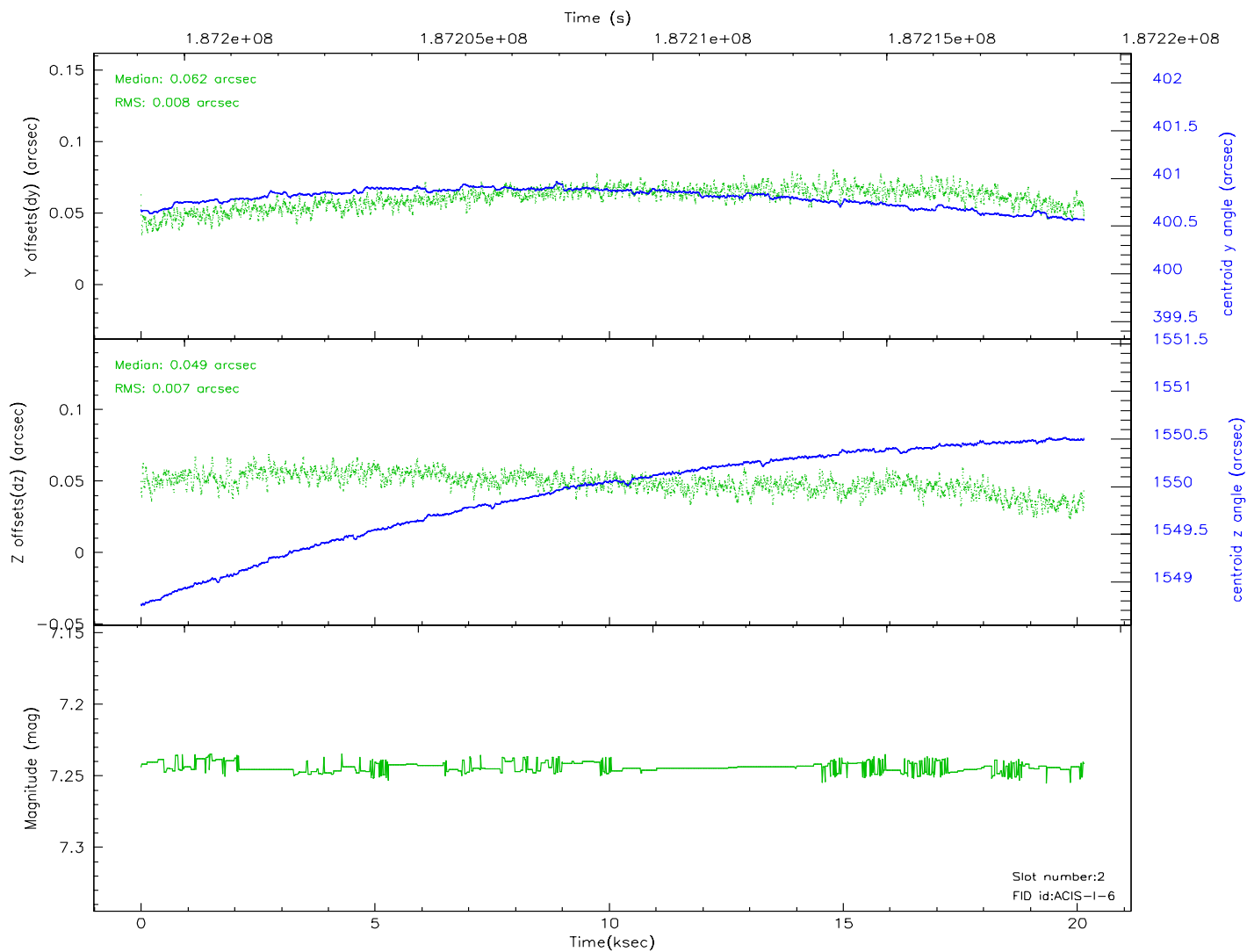
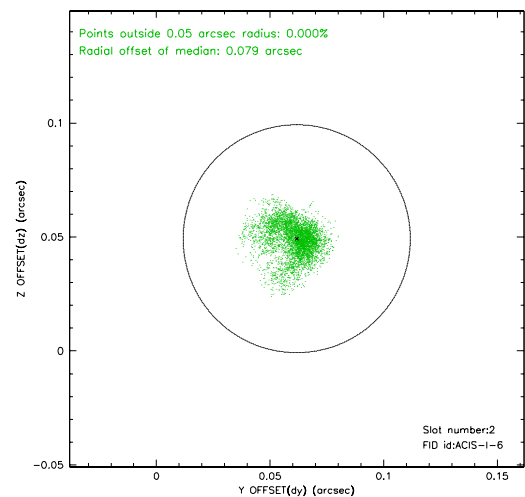
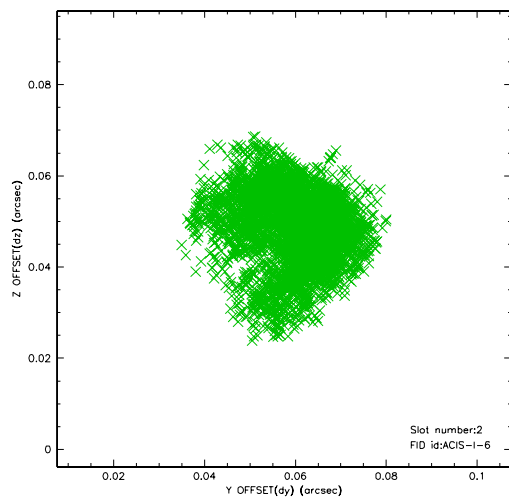
2.5.1 Slot 0



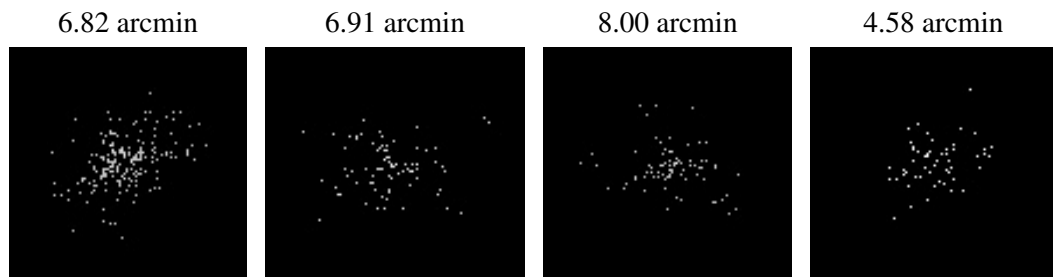
2.5.2 Slot 1



2.5.3 Slot 2



3 Point Sources



A Summary

A.1 Status

V&V Scientist	Jen Lauer
V&V Date (YYYY-MM-DD)	2006.06.23
V&V Edition	1
V&V Disposition and Status	OK
V&V Charge Time	20.143

A.2 Comments