

V&V Reference Report

L2 ASCDS Version : 8.4.5

Observation 3560 - L2 Version 3
Chandra X-Ray Center

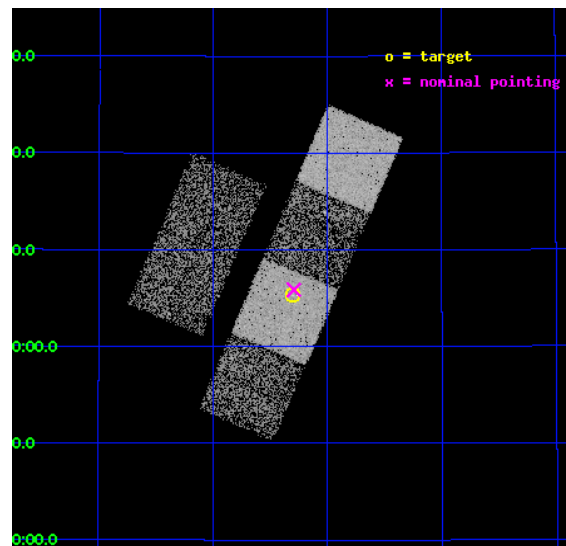
L2 Processing Date : Oct 19 2012

Contents

1	Front	2
2	OBI	3
2.1	OBI	3
2.1.1	Images	3
2.1.2	Bias	3
2.1.3	Parameters	4
2.1.4	Events	4
2.2	Compared Parameters	5
2.3	Aspect	6
2.4	Star Slots	9
2.4.1	Slot 3	9
2.4.2	Slot 4	10
2.4.3	Slot 5	11
2.4.4	Slot 6	12
2.4.5	Slot 7	13
2.5	FID Slots	14
2.5.1	Slot 0	14
2.5.2	Slot 1	15
2.5.3	Slot 2	16
A	Summary	17
A.1	Status	17
A.2	Comments	17

1 Front

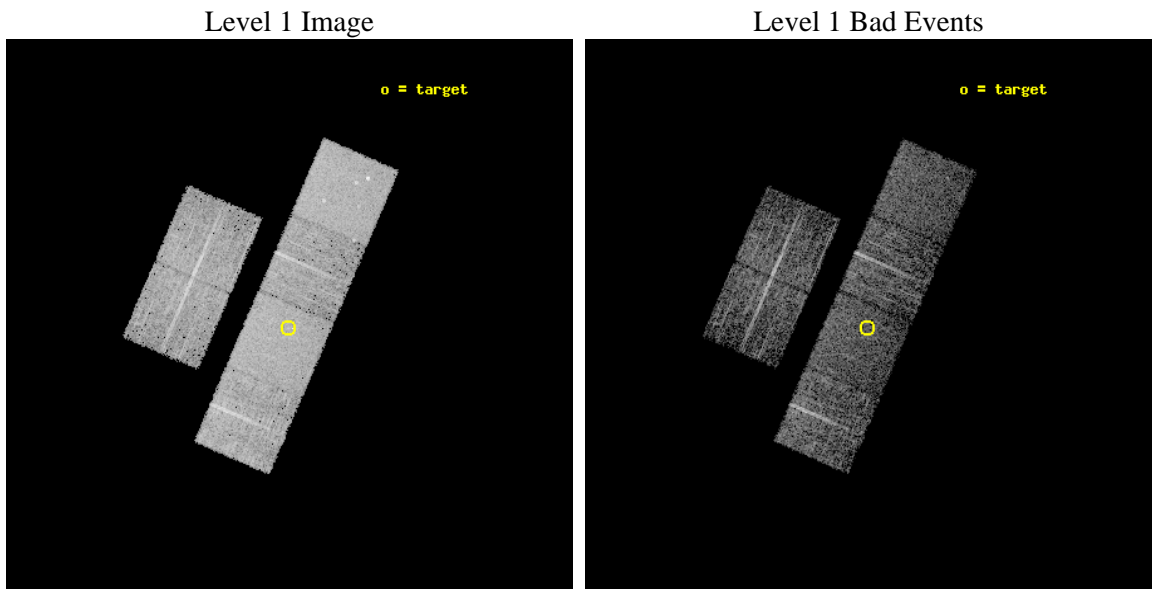
seq_num	700622	Sequence number
obs_id	3560	Observation id
title	A CHANDRA SURVEY OF LUMINOUS, RADIO-DETECTED QUASARS AT $Z > 4$	Prop
observer	Professor Gordon Garmire	Principal investigator
object	FIRST 0725+3705	Source name
dtcycle	0	
cycle	P	events from which exps? Prim/Second/Both
ra_targ	111.32625	Observer's specified target RA [deg]
dec_targ	37.088306	Observer's specified target Dec [deg]
ra_nom	111.32343662337	Nominal RA [deg]
dec_nom	37.097669561486	Nominal Dec [deg]
roll_nom	113.31321264562	Nominal Roll [deg]
revision	3	Processing version of data
ontime	4950.3999815583	Sum of GTIs [s]
livetime	4887.7150362188	Livetime [s]
ontime2	4947.158981353	Sum of GTIs [s]
ontime3	4950.3999815583	Sum of GTIs [s]
ontime5	4950.3999815583	Sum of GTIs [s]
ontime6	4950.3999815583	Sum of GTIs [s]
ontime7	4950.3999815583	Sum of GTIs [s]
ontime8	4950.3999815583	Sum of GTIs [s]
l2events	48000	Number of level 2 events



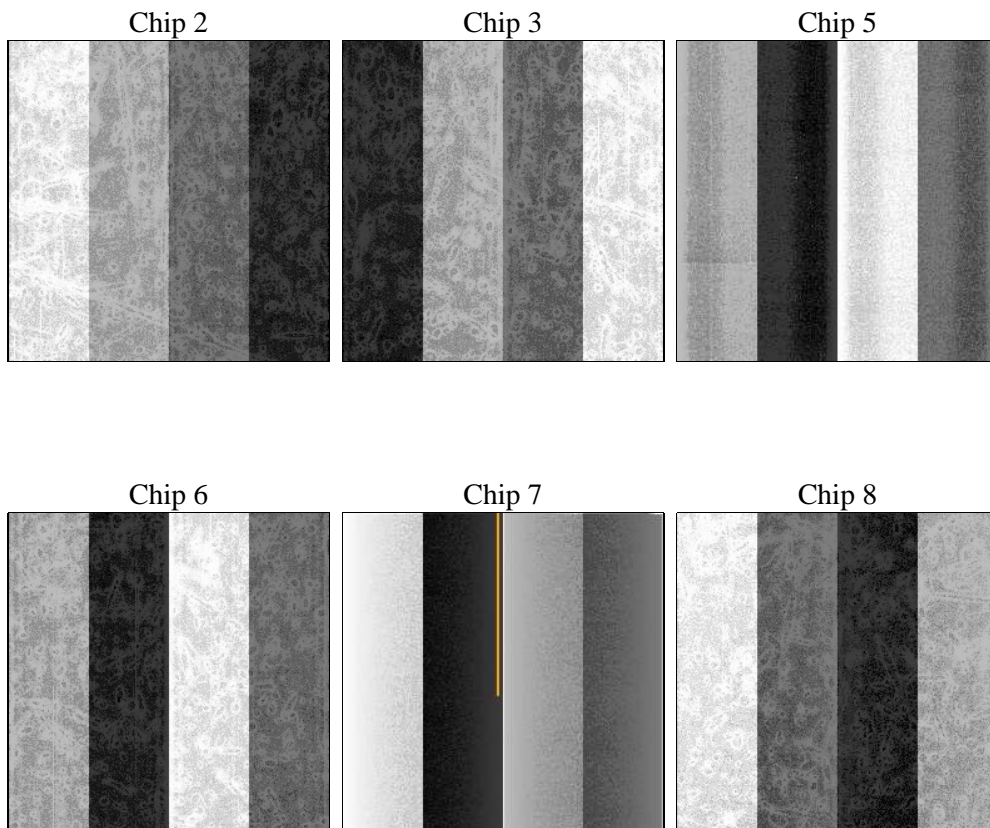
2 OBI

2.1 OBI

2.1.1 Images



2.1.2 Bias



2.1.3 Parameters

obi_num	0	Obi number	sched_exp_time	4838.000000	[s] Scheduled observation exposure time
ascdsver	8.4.5	Processing system revision	ontime	4950.3999815583	Sum of GTIs [s]
caldbver	4.5.2	 	ontime2	4947.158981353	Sum of GTIs [s]
date	2012-10-19T05:26:30	Date and time of file creation	ontime3	4950.3999815583	Sum of GTIs [s]
revision	3	Processing version of data	ontime5	4950.3999815583	Sum of GTIs [s]
			ontime6	4950.3999815583	Sum of GTIs [s]
			ontime7	4950.3999815583	Sum of GTIs [s]
			ontime8	4950.3999815583	Sum of GTIs [s]
			l1events	229952	Number of level 1 events

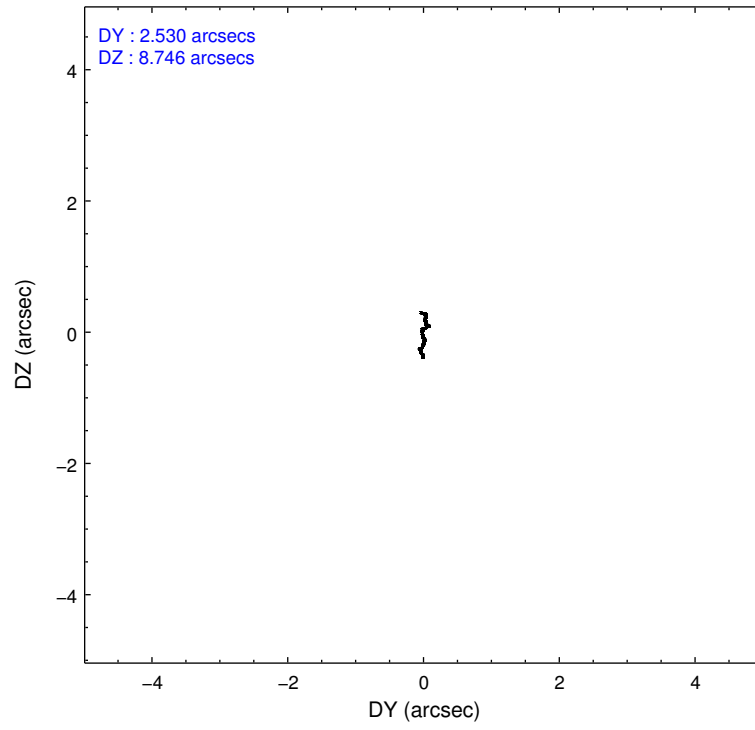
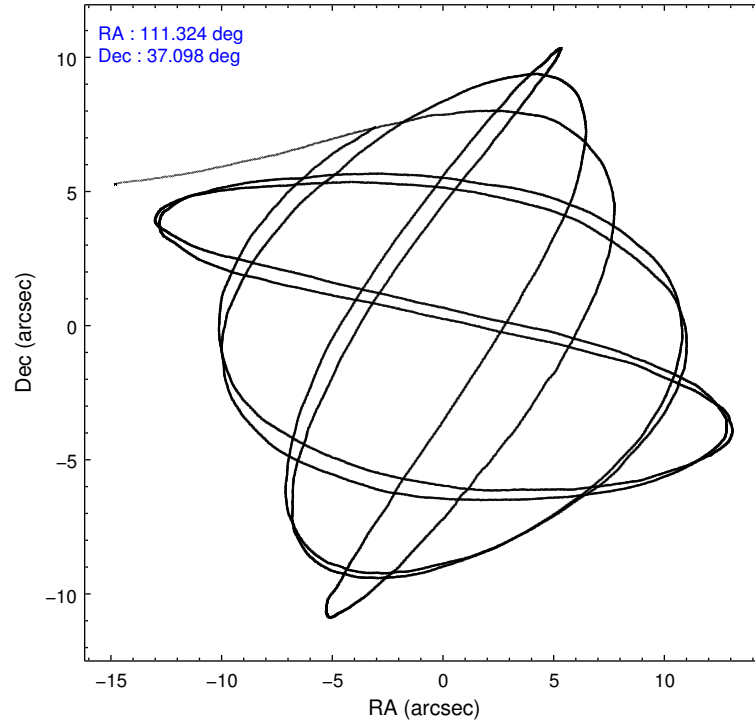
2.1.4 Events

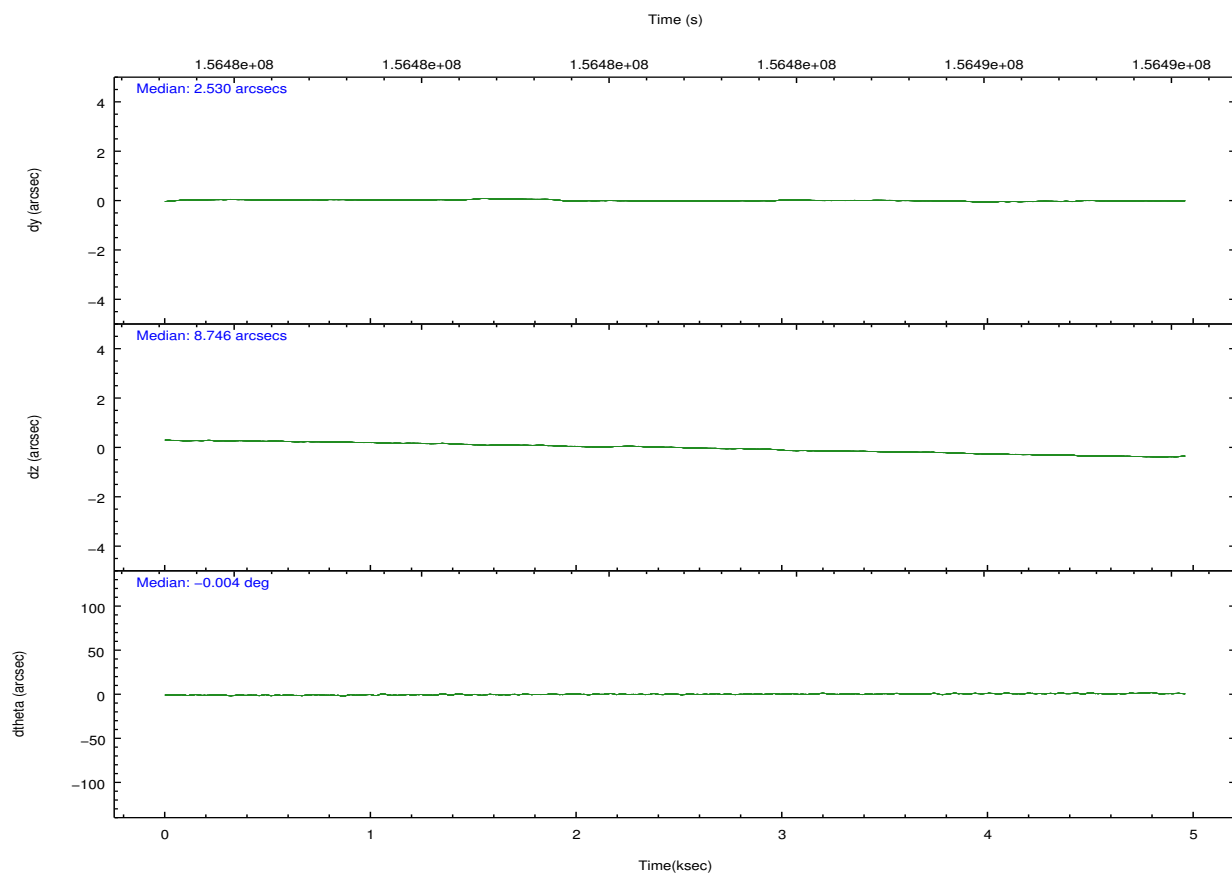
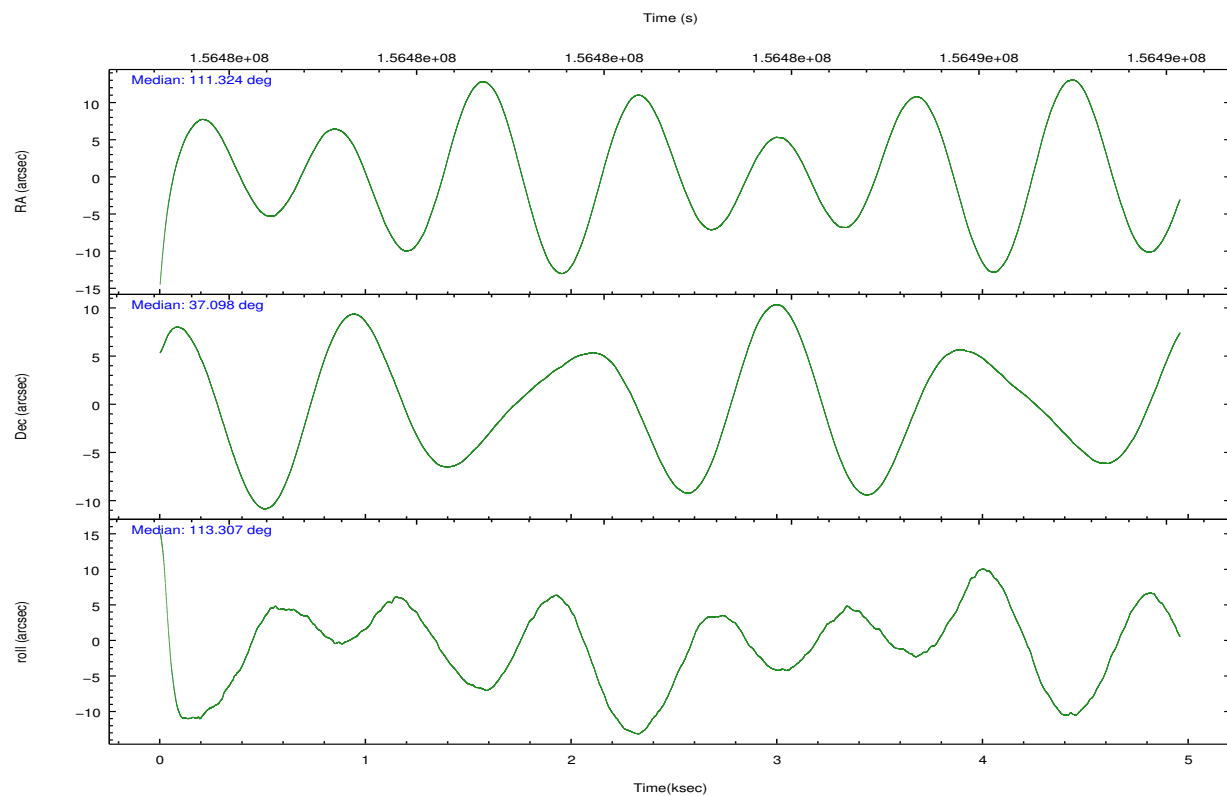
	ccd 2	ccd 3	ccd 5	ccd 6	ccd 7	ccd 8		ccd 2	ccd 3	ccd 5	ccd 6	ccd 7	ccd 8
level 1 events	33692	31586	47293	32923	43441	41017	grade 0 events	1555	1650	2492	1578	1757	2686
rejected events	30311	28081	26760	29297	26545	33144		4%	5%	5%	4%	4%	6%
rejected %	89%	88%	56%	88%	61%	80%	grade 1 events	21	17	88	11	43	33
								0%	0%	0%	0%	0%	0%
							grade 2 events	783	728	6485	811	3582	1770
								2%	2%	13%	2%	8%	4%
							grade 3 events	320	387	917	384	1652	1034
								0%	1%	1%	1%	3%	2%
							grade 4 events	334	388	914	330	1650	879
								0%	1%	1%	1%	3%	2%
							grade 5 events	1208	1365	3469	1456	4149	1853
								3%	4%	7%	4%	9%	4%
							grade 6 events	644	631	11358	790	9537	2157
								1%	1%	24%	2%	21%	5%
							grade 7 events	28827	26420	21570	27563	21071	30605
								85%	83%	45%	83%	48%	74%

2.2 Compared Parameters

Parameter	Planned	Actual	Parameter	Planned	Actual
Instrument	ACIS	ACIS	Obspar format version number	7	7
Detector	ACIS-235678	ACIS-235678	Obspar file type	PREDICTED	ACTUAL
Grating	NONE	NONE	Obspar update status	NONE	UPDATED
Data mode	FAINT	FAINT	Number of optional ACIS chips dropped	0	0
Observation mode	POINTING	POINTING	On-chip summing requested	N	N
[deg] Pointing RA	111.351118	111.3234366233665	Subarray requested	NONE	NONE
[deg] Pointing Dec	37.081742	37.09766956148582	Alternating exposures requested	N	N
[deg] Pointing Roll	113.139835	113.3132126456182	[s] Primary exposure time	0.000000	3.2
[mm] SIM focus pos	-0.684267	-0.6828225247311905			
[mm] SIM defocus	0	0.001444936568705701			
[mm] SIM translation stage pos	-190.132523	-190.1425803651734			
[mm] SIM translation stage offset	0	0.01005778216563158			
[s] Observation start time (MET)	156481995.184000	156480773.33858			
Observation start date	2002-12-17T03:12:11	2002-12-17T02:52:53			
[s] Observation end time (MET)	156486833.184000	156487189.83885			
Observation end date	2002-12-17T04:32:49	2002-12-17T04:39:49			
Read mode	TIMED	TIMED			

2.3 Aspect



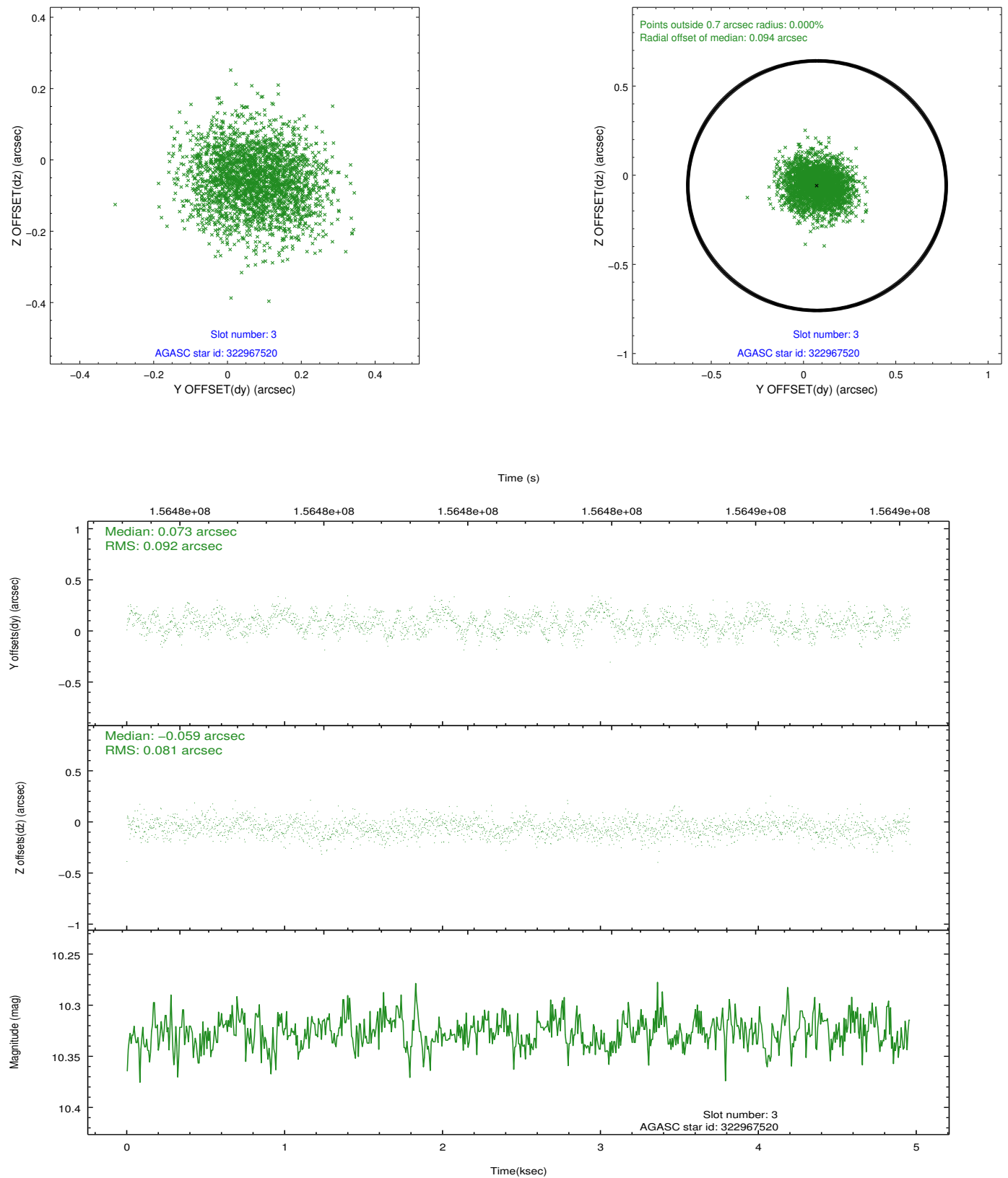


Slot Statistics

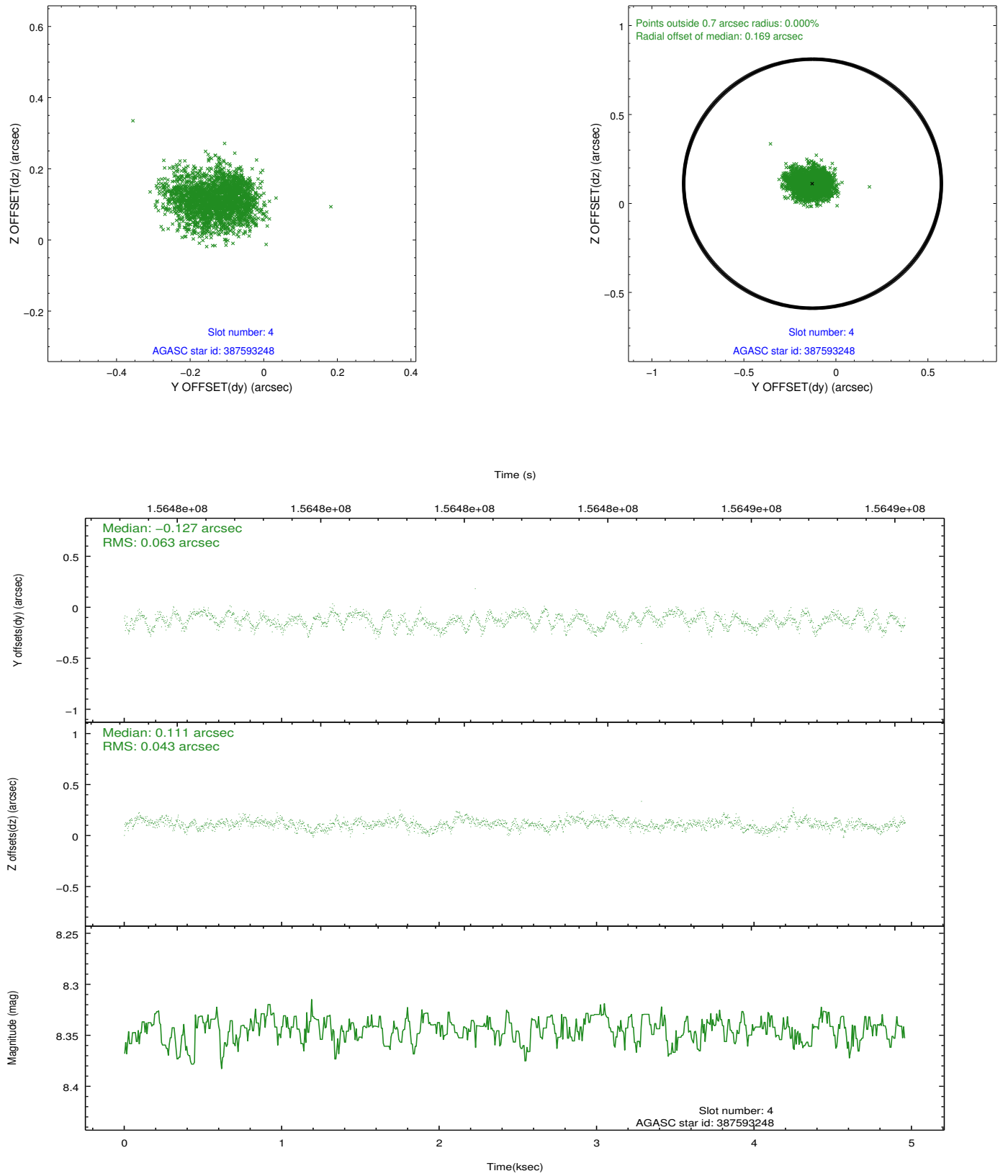
slot	status	id	mag	n_pts	med_dy	med_dz	dr1	dr2	ra	dec	mean_y	mean_z
0	FID	ACIS-S-2	7.10	1210	-0.017	-0.002	0.006	0.011	0.000000	0.000000	-755.19	-1729.88
1	FID	ACIS-S-4	7.20	1210	-0.018	0.009	0.007	0.014	0.000000	0.000000	2157.54	177.34
2	FID	ACIS-S-5	7.24	1208	0.004	0.002	0.007	0.010	0.000000	0.000000	-1806.42	172.41
3	GUIDE	322967520	10.33	2420	0.073	-0.059	0.133	0.208	110.931120	36.761602	-582.34	1566.62
4	GUIDE	387593248	8.34	2416	-0.127	0.111	0.082	0.128	111.537836	37.823096	2244.91	-1535.29
5	GUIDE	387594544	9.06	2419	-0.080	0.111	0.082	0.131	111.840745	37.608449	1198.35	-2029.95
6	GUIDE	322962352	9.97	2416	-0.021	-0.228	0.119	0.195	110.633015	36.885116	168.16	2176.45
7	GUIDE	322979672	9.20	2418	0.153	0.069	0.086	0.134	111.978493	36.740031	-1837.52	-1181.46

2.4 Star Slots

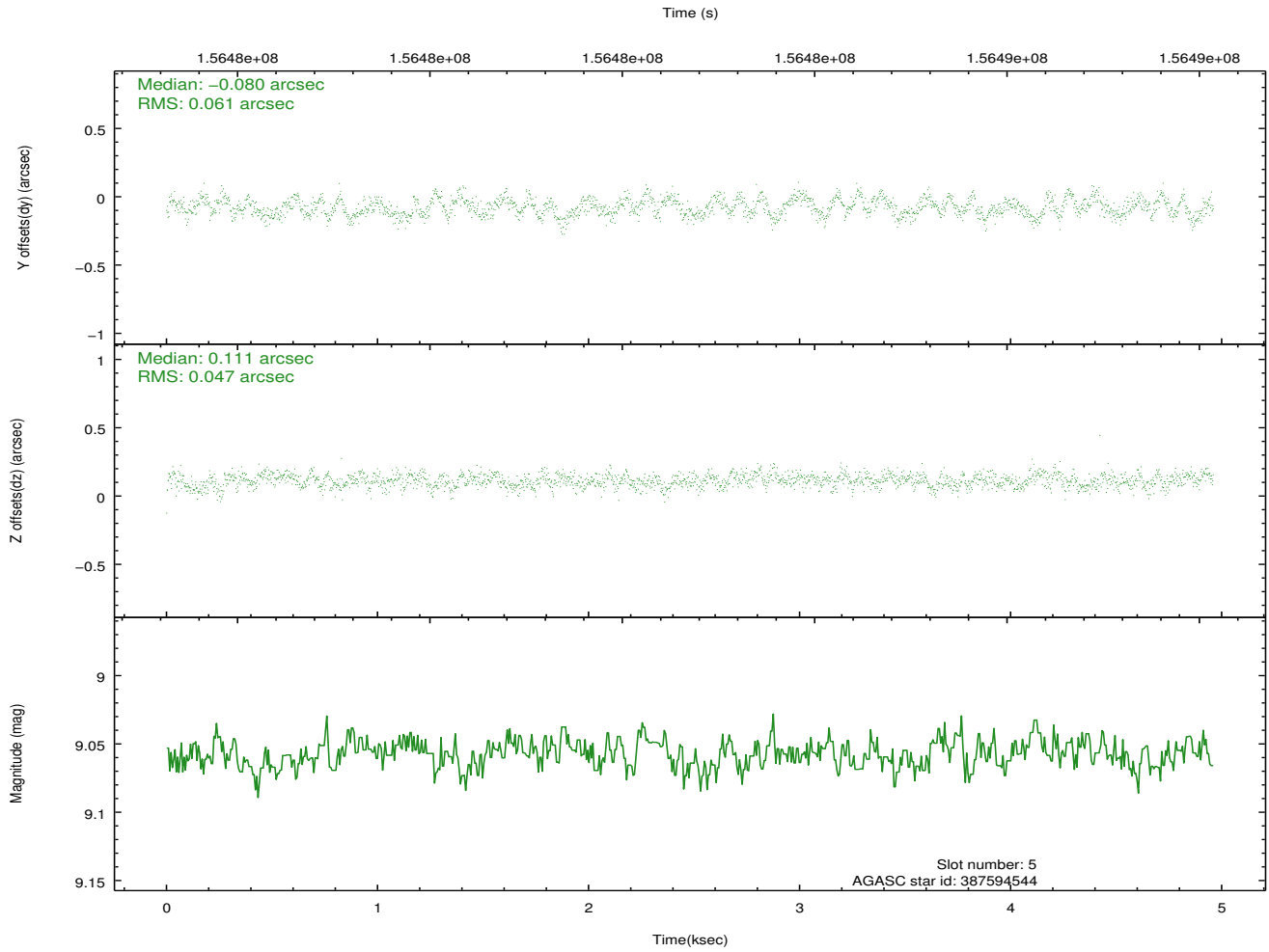
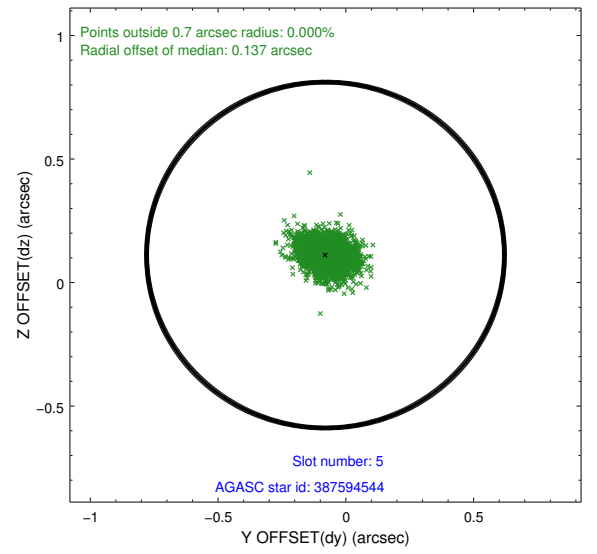
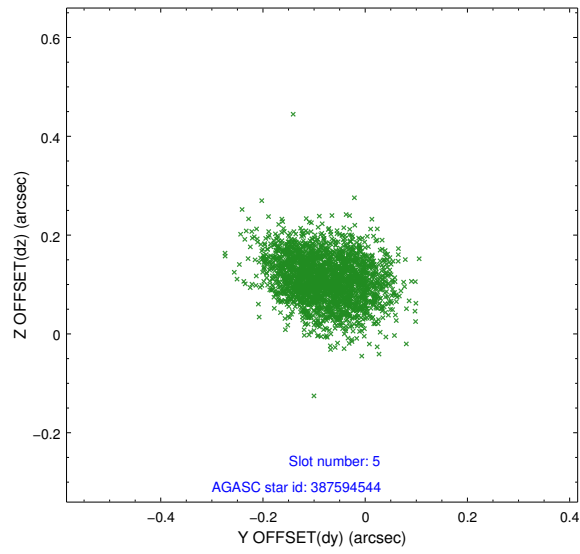
2.4.1 Slot 3



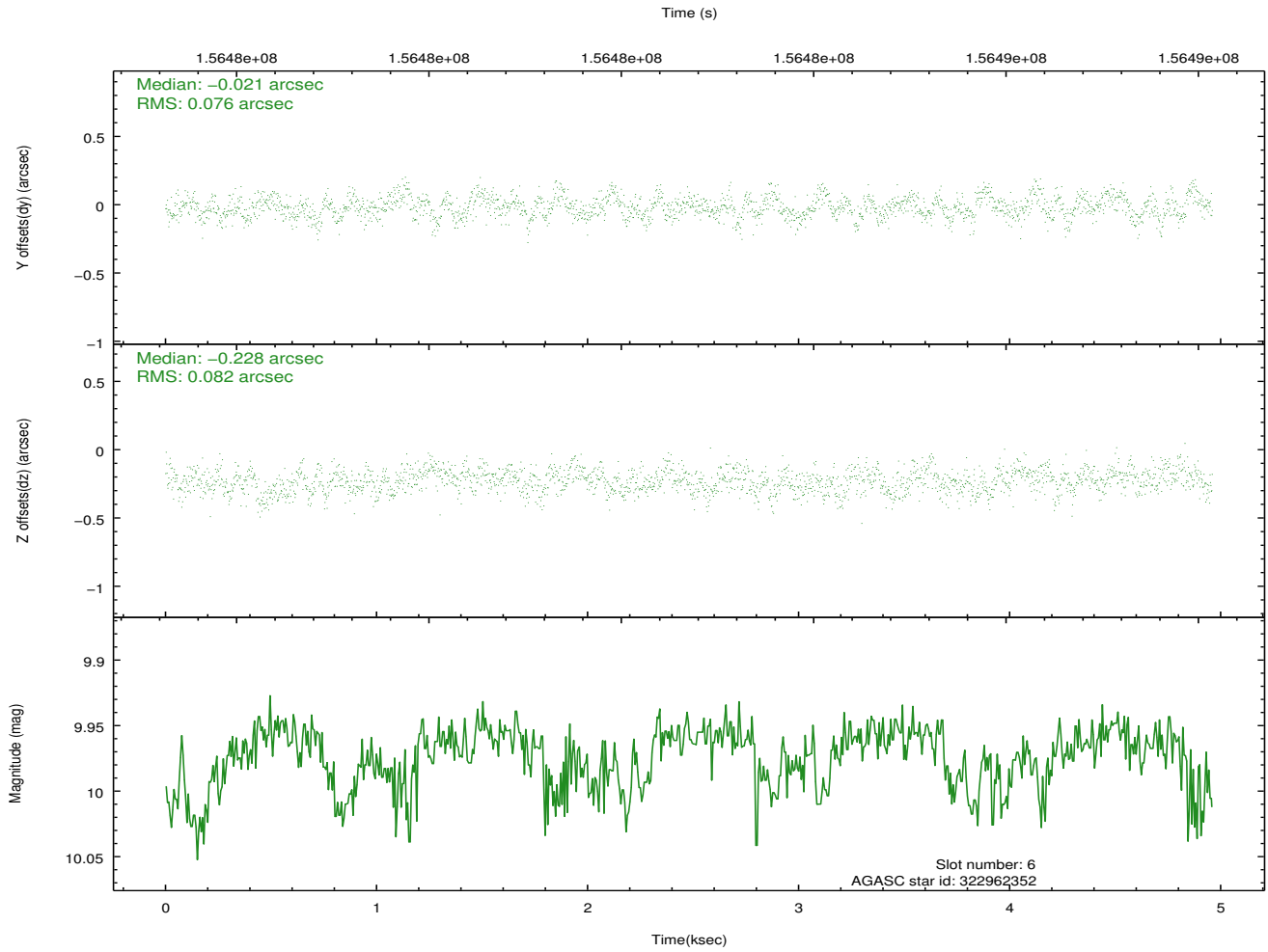
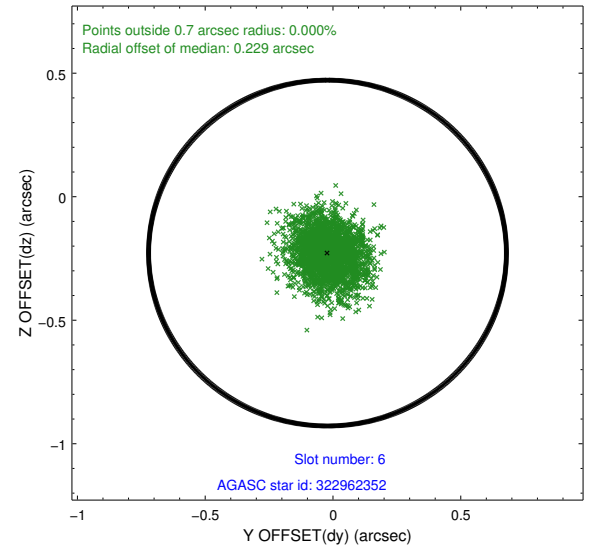
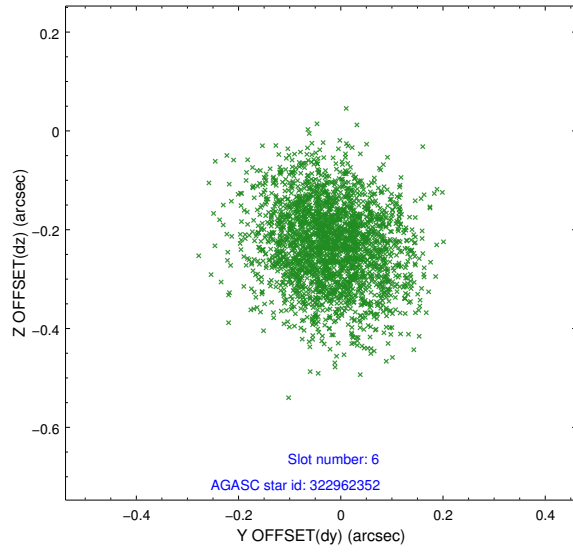
2.4.2 Slot 4



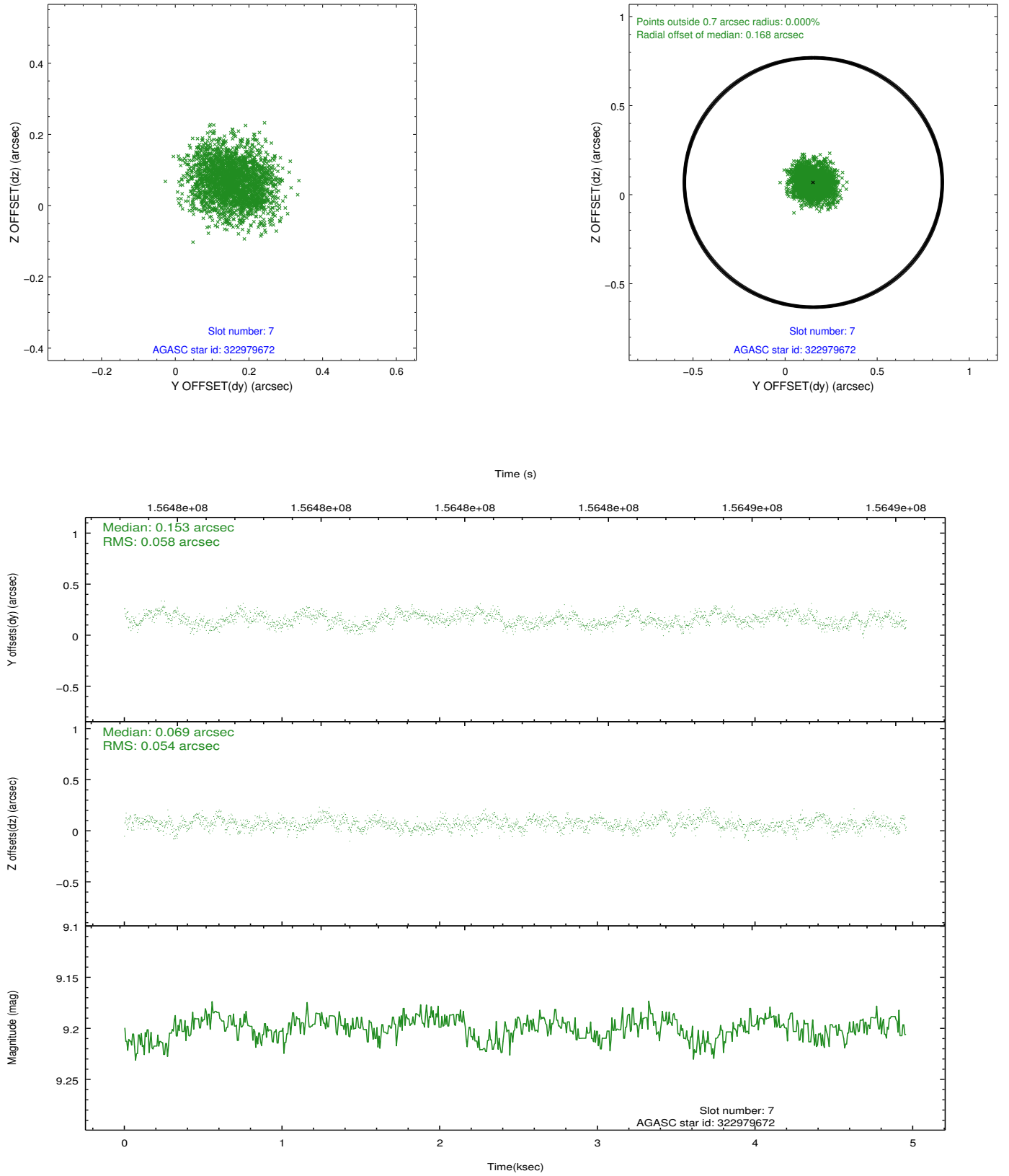
2.4.3 Slot 5



2.4.4 Slot 6

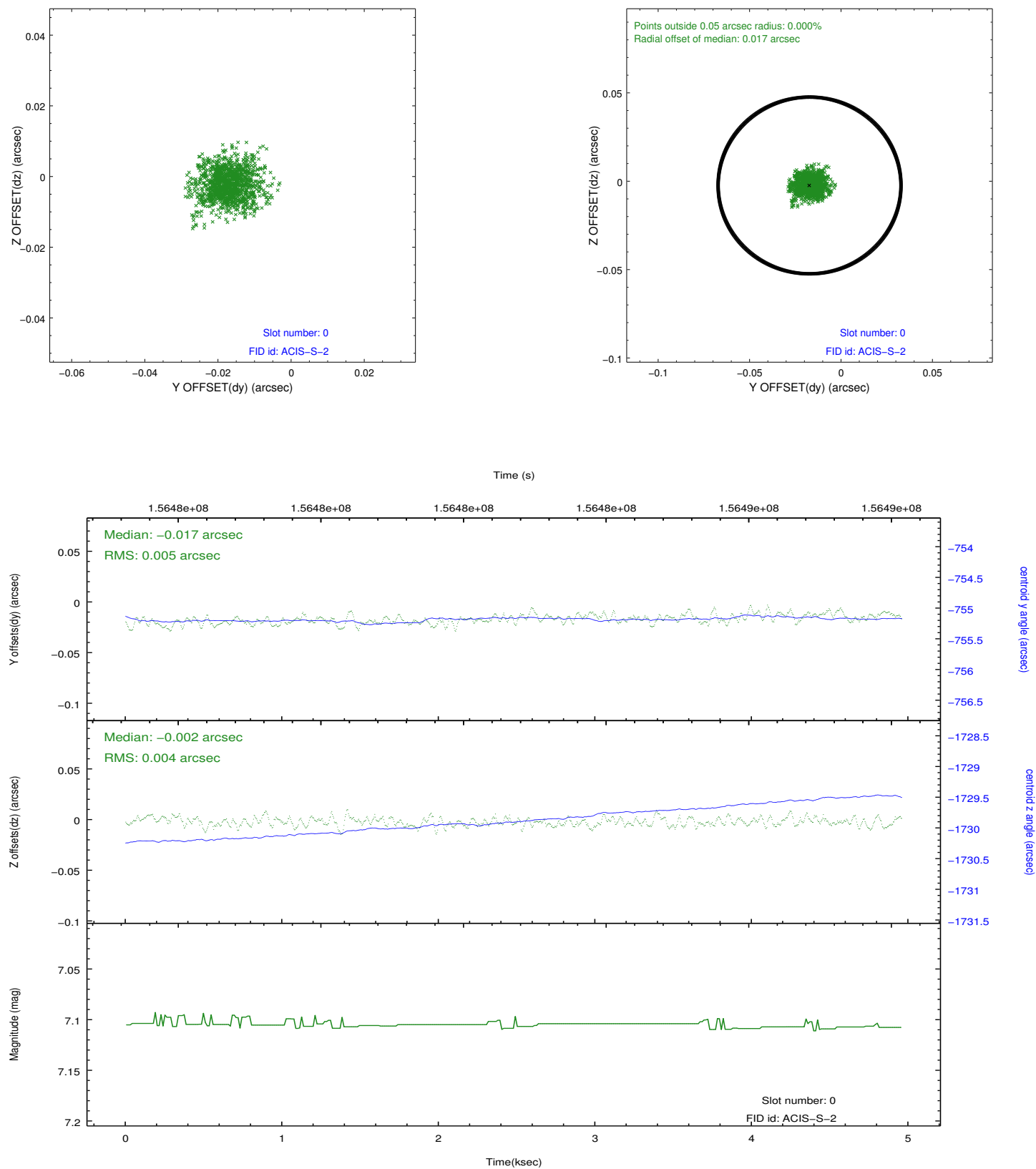


2.4.5 Slot 7

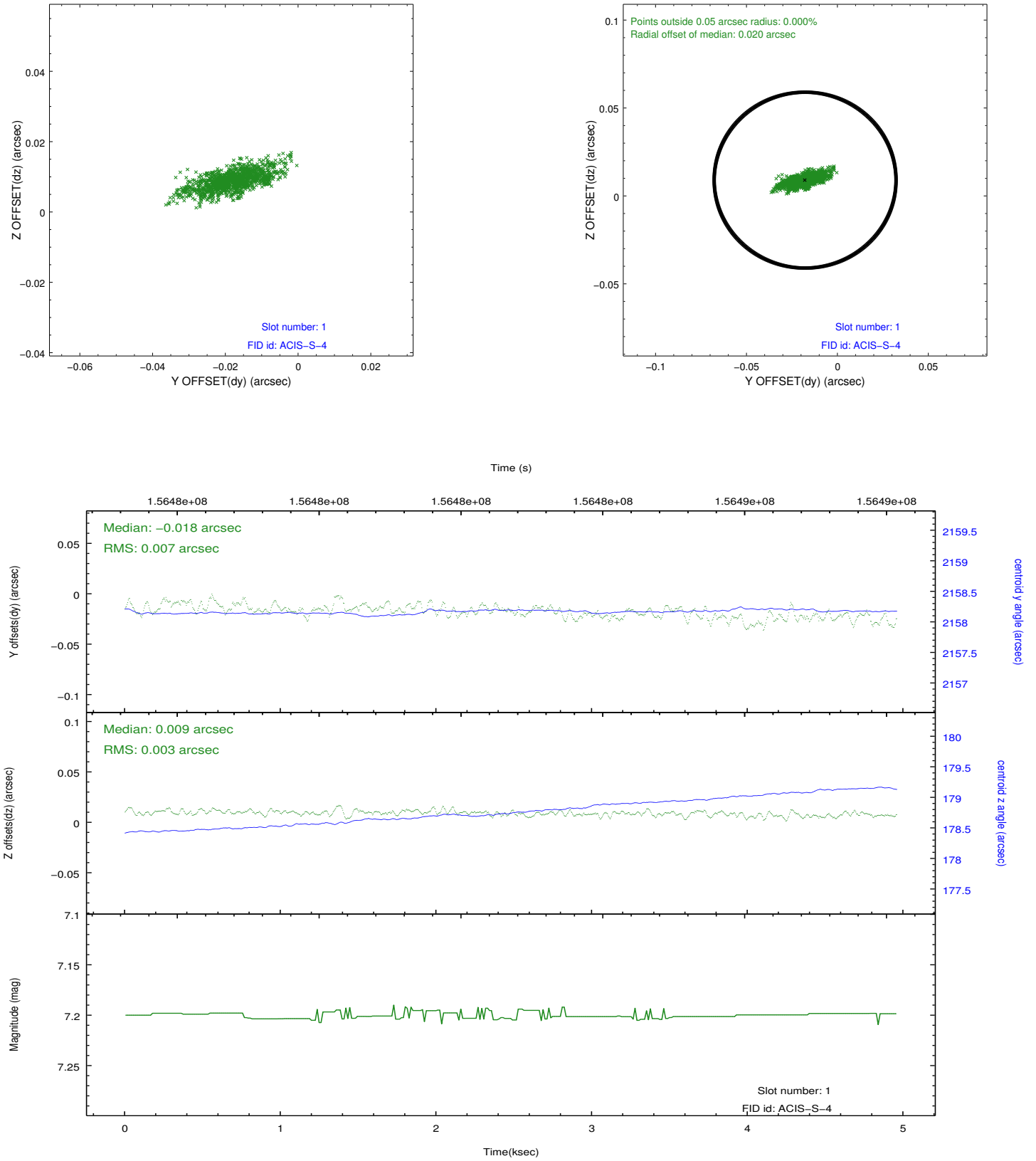


2.5 FID Slots

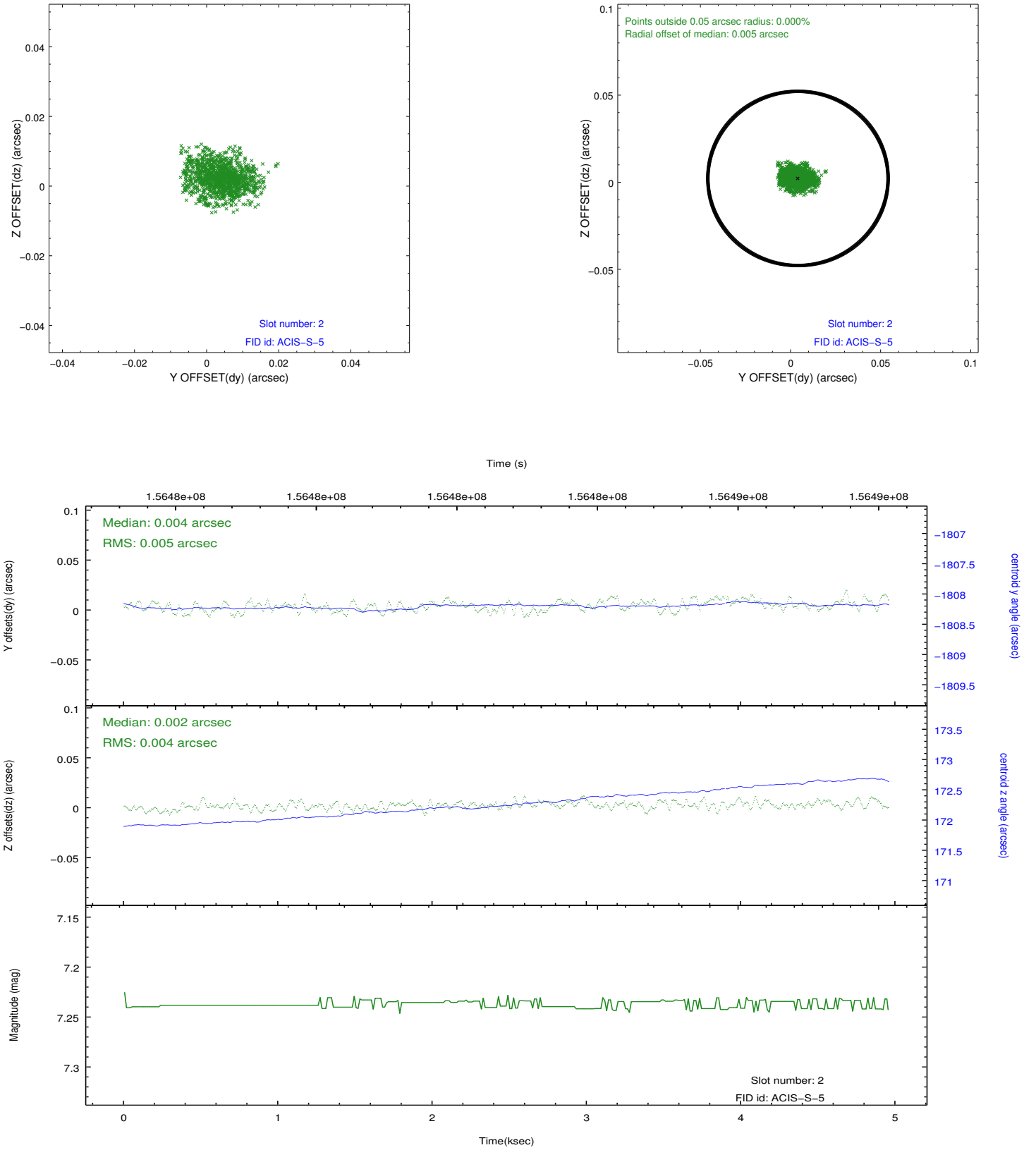
2.5.1 Slot 0



2.5.2 Slot 1



2.5.3 Slot 2



A Summary

A.1 Status

V&V Scientist	Jen Lauer
V&V Date (YYYY-MM-DD)	2012.10.30
V&V Edition	1
V&V Disposition and Status	OK
V&V Charge Time	4.95

A.2 Comments