

V&V Reference Report

L2 ASCDS Version : 8.4.5

Observation 3520 - L2 Version 3
Chandra X-Ray Center

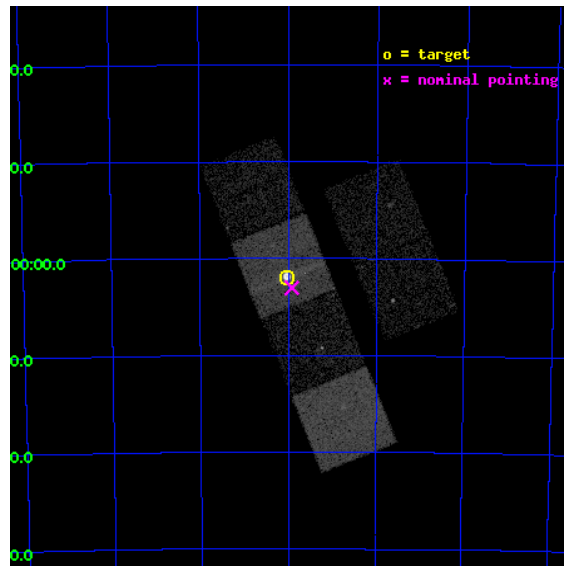
L2 Processing Date : Oct 22 2012

Contents

1	Front	2
2	OBI	3
2.1	OBI	3
2.1.1	Images	3
2.1.2	Bias	3
2.1.3	Parameters	4
2.1.4	Events	4
2.2	Compared Parameters	5
2.3	Aspect	6
2.4	Star Slots	9
2.4.1	Slot 3	9
2.4.2	Slot 4	10
2.4.3	Slot 5	11
2.4.4	Slot 6	12
2.4.5	Slot 7	13
2.5	FID Slots	14
2.5.1	Slot 0	14
2.5.2	Slot 1	15
2.5.3	Slot 2	16
A	Summary	17
A.1	Status	17
A.2	Comments	17

1 Front

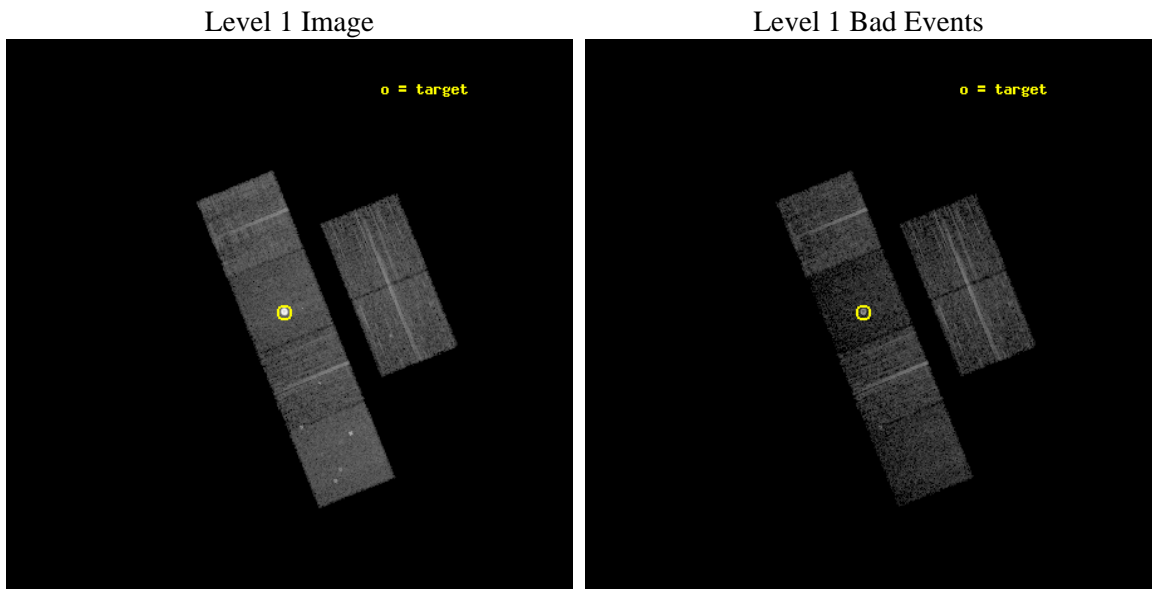
seq_num	590275	Sequence number
obs_id	3520	Observation id
title	AO4A ACIS-S CALIBRATION OBSERVATIONS OF E0102-72	Proposal title
observer	Dr. CXC Calibration	Principal investigator
object	E0102-72[S3,-120,-1,0,0]	Source name
dtcycle	0	
cycle	P	events from which exps? Prim/Second/Both
ra_targ	16.01	Observer's specified target RA [deg]
dec_targ	-72.032028	Observer's specified target Dec [deg]
ra_nom	15.979880577052	Nominal RA [deg]
dec_nom	-72.050558344028	Nominal Dec [deg]
roll_nom	248.00691948123	Nominal Roll [deg]
revision	3	Processing version of data
ontime	7727.8044693172	Sum of GTIs [s]
livetime	7629.9503560015	Livetime [s]
ontime2	7727.8455093205	Sum of GTIs [s]
ontime3	7727.6813493073	Sum of GTIs [s]
ontime5	7727.7634293139	Sum of GTIs [s]
ontime6	7727.7223893106	Sum of GTIs [s]
ontime7	7727.8044693172	Sum of GTIs [s]
ontime8	7724.3993490338	Sum of GTIs [s]
l2events	111505	Number of level 2 events



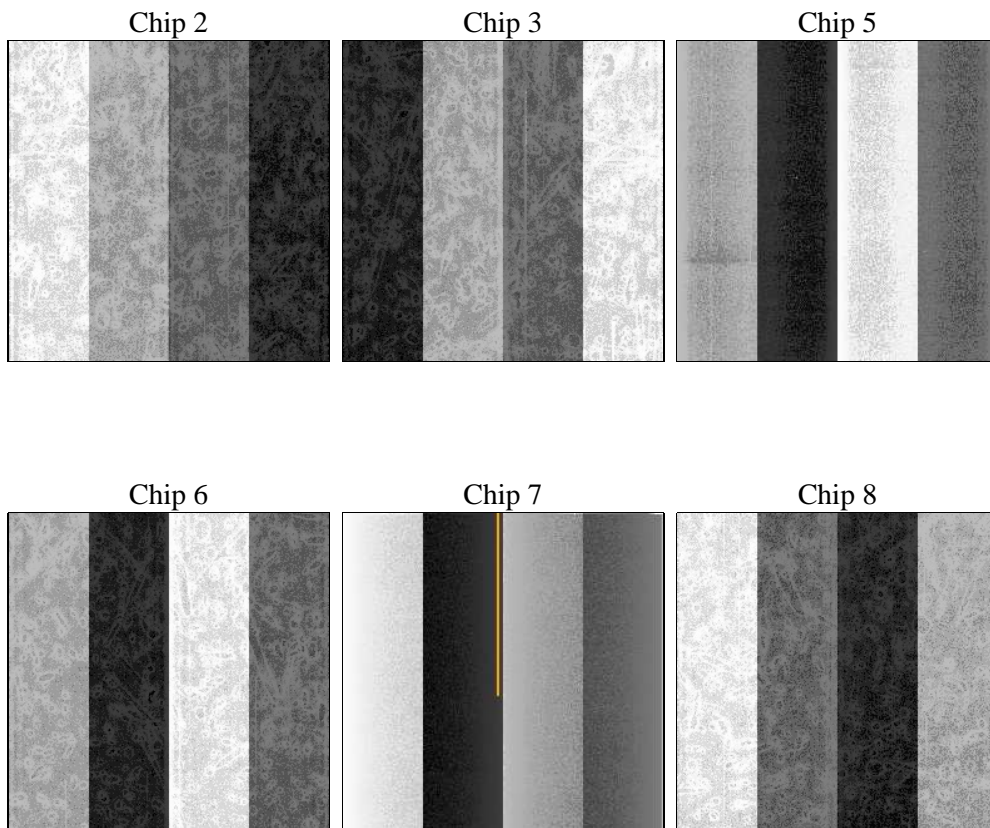
2 OBI

2.1 OBI

2.1.1 Images



2.1.2 Bias



2.1.3 Parameters

obi_num	0	Obi number	sched_exp_time	7973.000000	[s] Scheduled observation exposure time
ascdsver	8.4.5	Processing system revision	ontime	7727.8044693172	Sum of GTIs [s]
caldbver	4.5.2	 	ontime2	7727.8455093205	Sum of GTIs [s]
date	2012-10-22T04:00:09	Date and time of file creation	ontime3	7727.6813493073	Sum of GTIs [s]
revision	3	Processing version of data	ontime5	7727.7634293139	Sum of GTIs [s]
			ontime6	7727.7223893106	Sum of GTIs [s]
			ontime7	7727.8044693172	Sum of GTIs [s]
			ontime8	7724.3993490338	Sum of GTIs [s]
			l1events	314727	Number of level 1 events

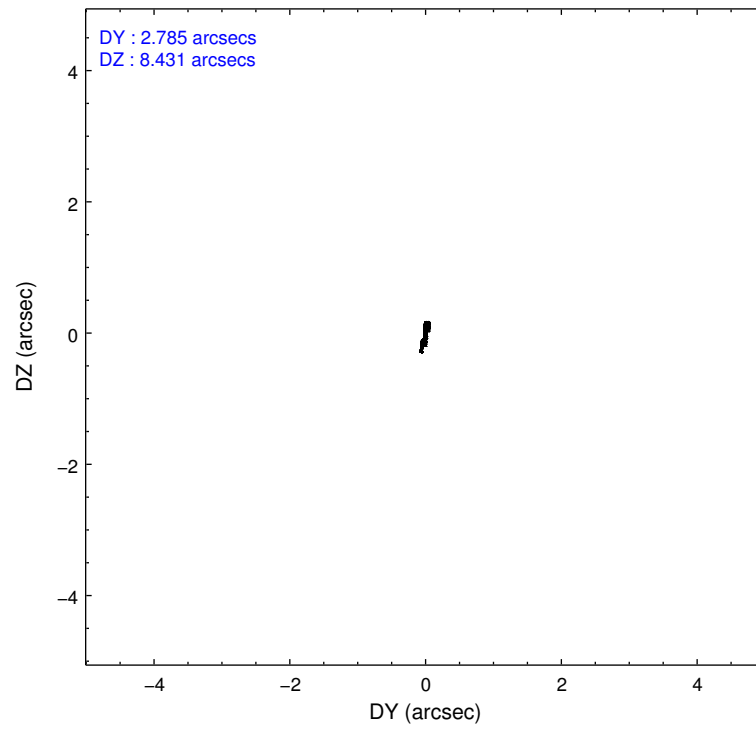
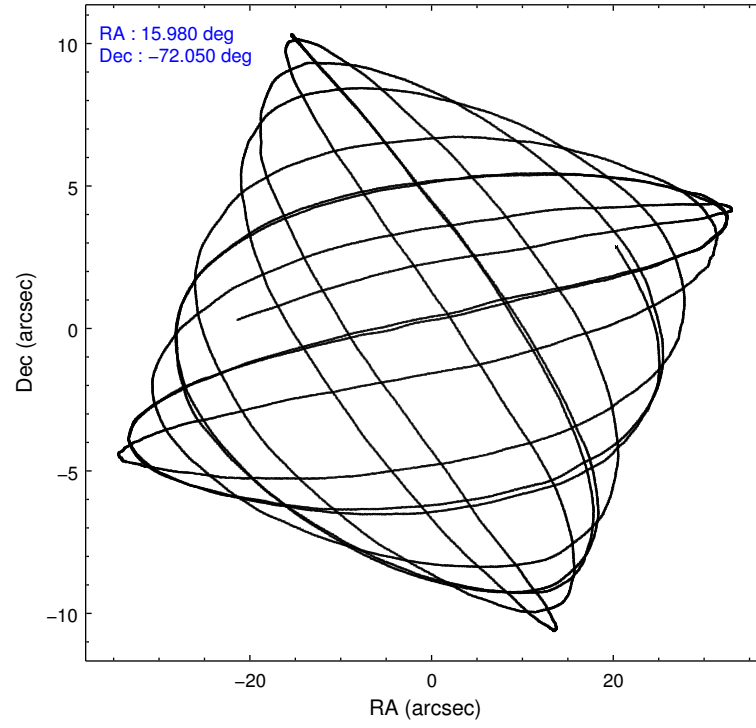
2.1.4 Events

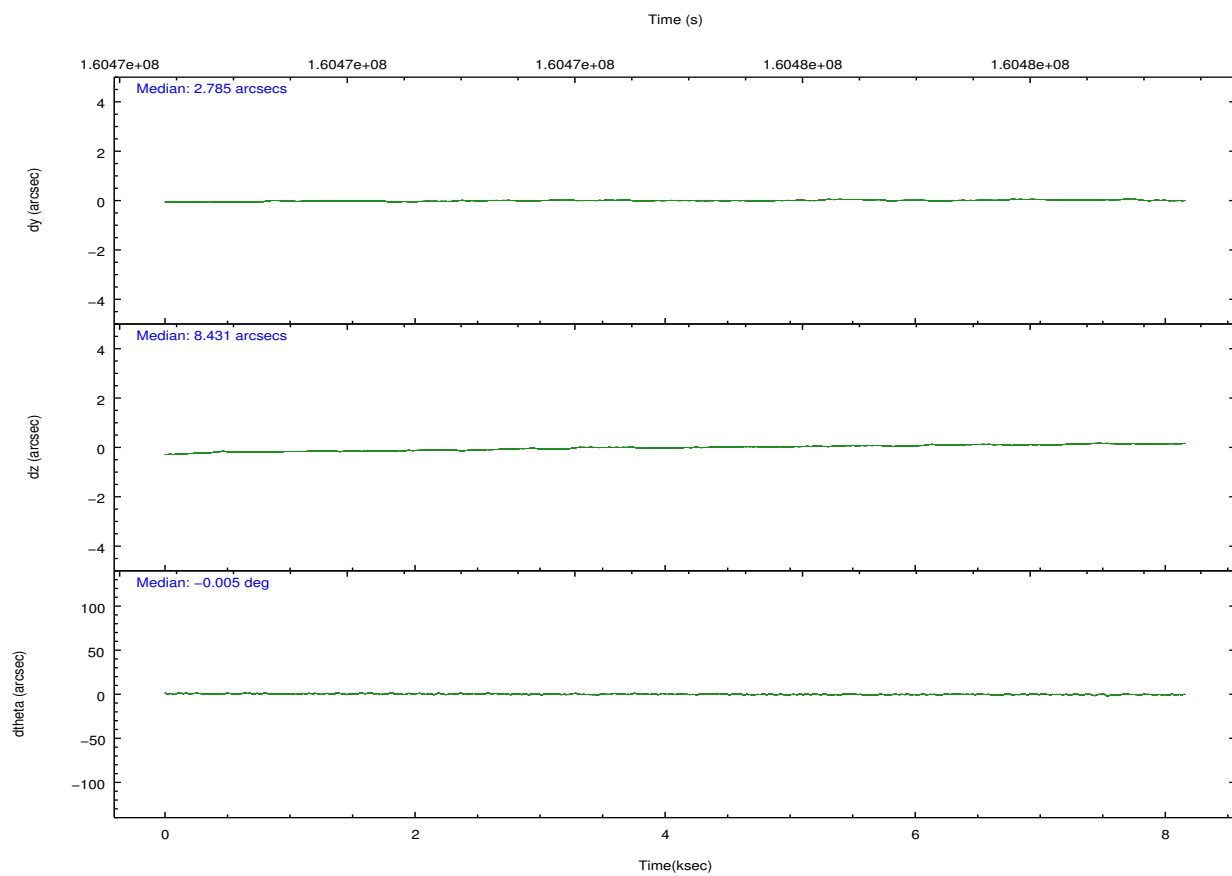
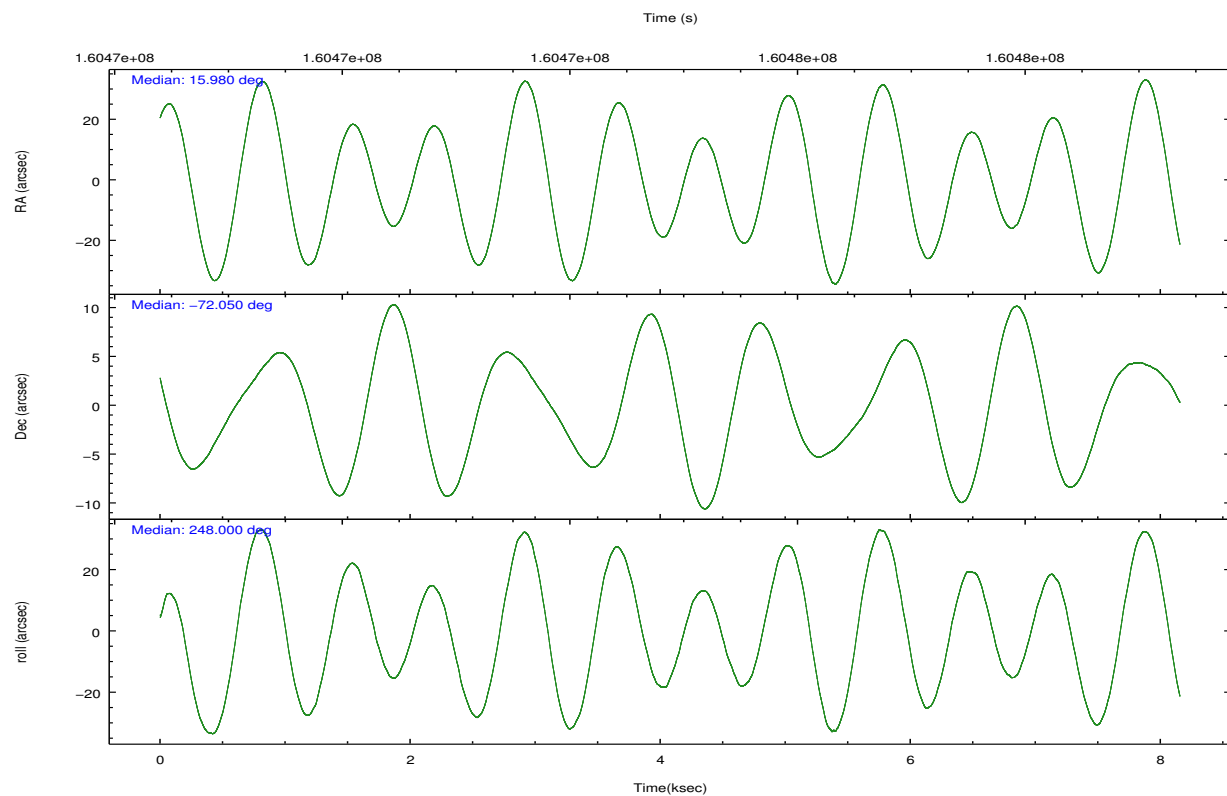
	ccd 2	ccd 3	ccd 5	ccd 6	ccd 7	ccd 8		ccd 2	ccd 3	ccd 5	ccd 6	ccd 7	ccd 8
level 1 events	43489	38571	47566	39843	94999	50259	grade 0 events	1736	1437	3958	2061	22897	3002
rejected events	39406	34943	21809	35171	20047	39025		3%	3%	8%	5%	24%	5%
rejected %	90%	90%	45%	88%	21%	77%	grade 1 events	23	26	132	13	465	37
								0%	0%	0%	0%	0%	0%
							grade 2 events	877	751	7325	867	18886	2529
								2%	1%	15%	2%	19%	5%
							grade 3 events	440	384	1320	487	8643	1283
								1%	0%	2%	1%	9%	2%
							grade 4 events	426	399	1187	481	8553	1221
								0%	1%	2%	1%	9%	2%
							grade 5 events	1049	1207	3978	1248	4823	1813
								2%	3%	8%	3%	5%	3%
							grade 6 events	605	663	11986	777	16025	3201
								1%	1%	25%	1%	16%	6%
							grade 7 events	38333	33704	17680	33909	14707	37173
								88%	87%	37%	85%	15%	73%

2.2 Compared Parameters

Parameter	Planned	Actual	Parameter	Planned	Actual
Instrument	ACIS	ACIS	Obspar format version number	7	7
Detector	ACIS-235678	ACIS-235678	Obspar file type	PREDICTED	ACTUAL
Grating	NONE	NONE	Obspar update status	NONE	UPDATED
Data mode	VFAINT	VFAINT	Number of optional ACIS chips dropped	0	0
Observation mode	POINTING	POINTING	On-chip summing requested	N	N
[deg] Pointing RA	15.966230	15.9798805770525	Subarray requested	NONE	NONE
[deg] Pointing Dec	-72.023629	-72.05055834402827	Alternating exposures requested	N	N
[deg] Pointing Roll	247.837308	248.0069194812272	[s] Primary exposure time	0.000000	3.2
[s] Window start time (MET)	159019264.184000	159019264.184000			
[s] Window stop time (MET)	161697664.184000	161697664.184000			
[mm] SIM focus pos	-0.684267	-0.6828225247311905			
[mm] SIM defocus	0	0.001444936568705701			
[mm] SIM translation stage pos	-190.132523	-190.1425803651734			
[mm] SIM translation stage offset	0	0.01005778216563158			
[s] Observation start time (MET)	160470984.184000	160470608.04298			
Observation start date	2003-02-01T07:15:20	2003-02-01T07:10:08			
[s] Observation end time (MET)	160478957.184000	160479090.94334			
Observation end date	2003-02-01T09:28:13	2003-02-01T09:31:30			
Read mode	TIMED	TIMED			

2.3 Aspect



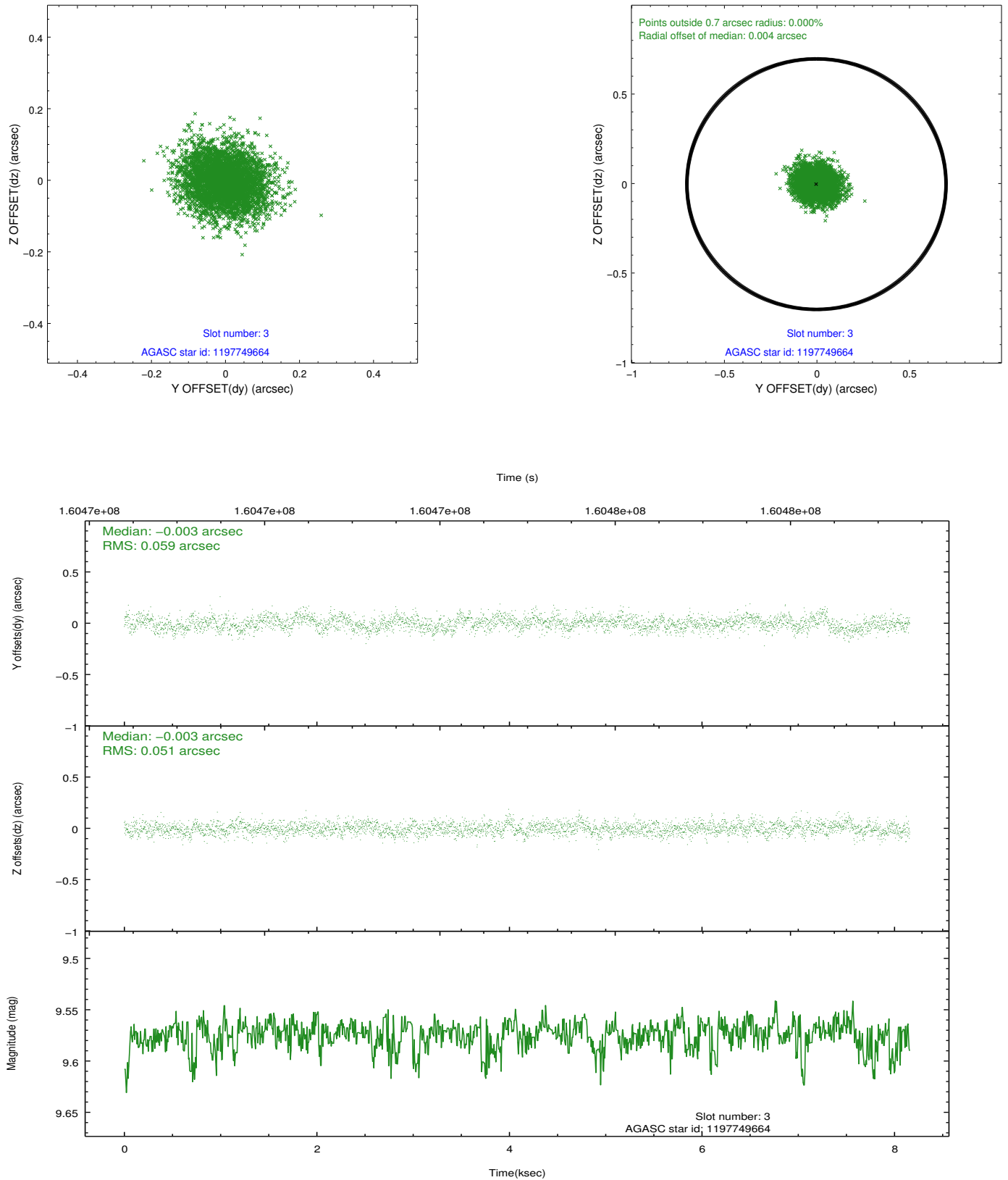


Slot Statistics

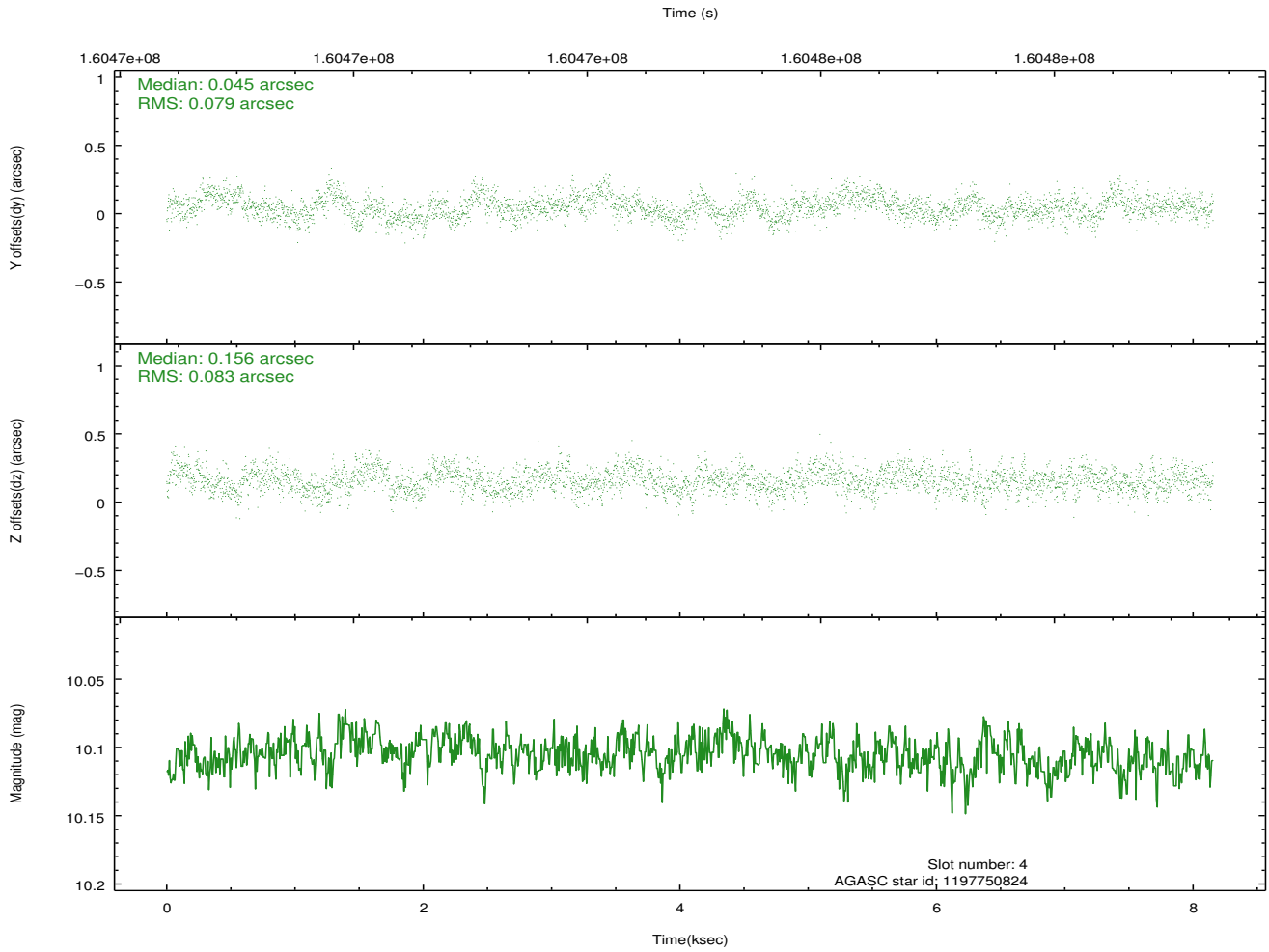
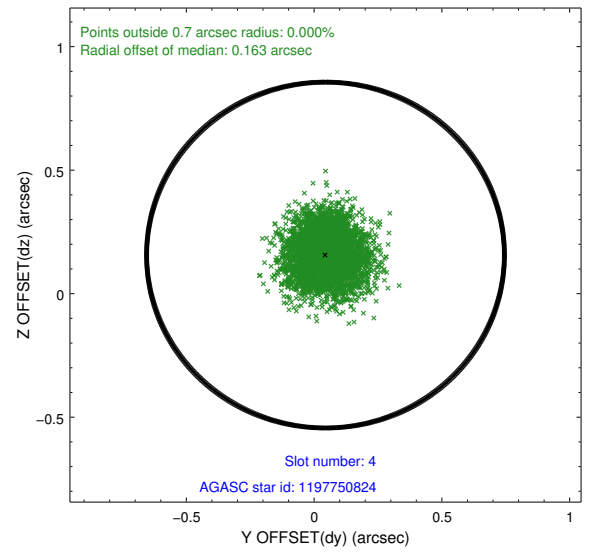
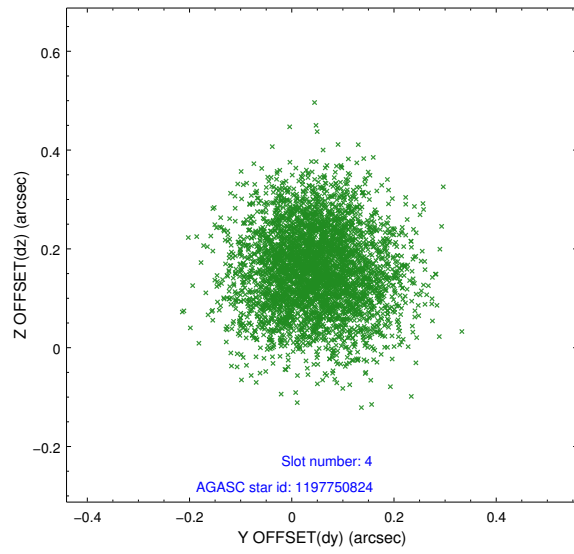
slot	status	id	mag	n_pts	med_dy	med_dz	dr1	dr2	ra	dec	mean_y	mean_z
0	FID	ACIS-S-1	7.19	1990	0.034	-0.001	0.009	0.016	0.000000	0.000000	940.63	-1725.20
1	FID	ACIS-S-5	7.24	1990	-0.022	0.046	0.006	0.010	0.000000	0.000000	-1808.01	171.72
2	FID	ACIS-S-6	7.35	1990	-0.033	-0.033	0.008	0.014	0.000000	0.000000	405.41	816.36
3	GUIDE	1197749664	9.57	3980	-0.003	-0.003	0.082	0.135	15.809015	-72.366369	1207.74	306.96
4	GUIDE	1197750824	10.10	3974	0.045	0.156	0.122	0.198	14.791487	-71.393477	-1578.97	-2100.44
5	GUIDE	1197884712	8.30	3978	-0.051	-0.044	0.075	0.118	16.087398	-72.252690	713.39	433.82
6	GUIDE	1197885104	9.37	3977	-0.030	-0.080	0.092	0.153	17.845067	-72.189368	-197.54	2152.93
7	GUIDE	1197750936	7.56	3979	0.035	-0.028	0.052	0.087	15.387940	-71.549550	-1328.65	-1252.41

2.4 Star Slots

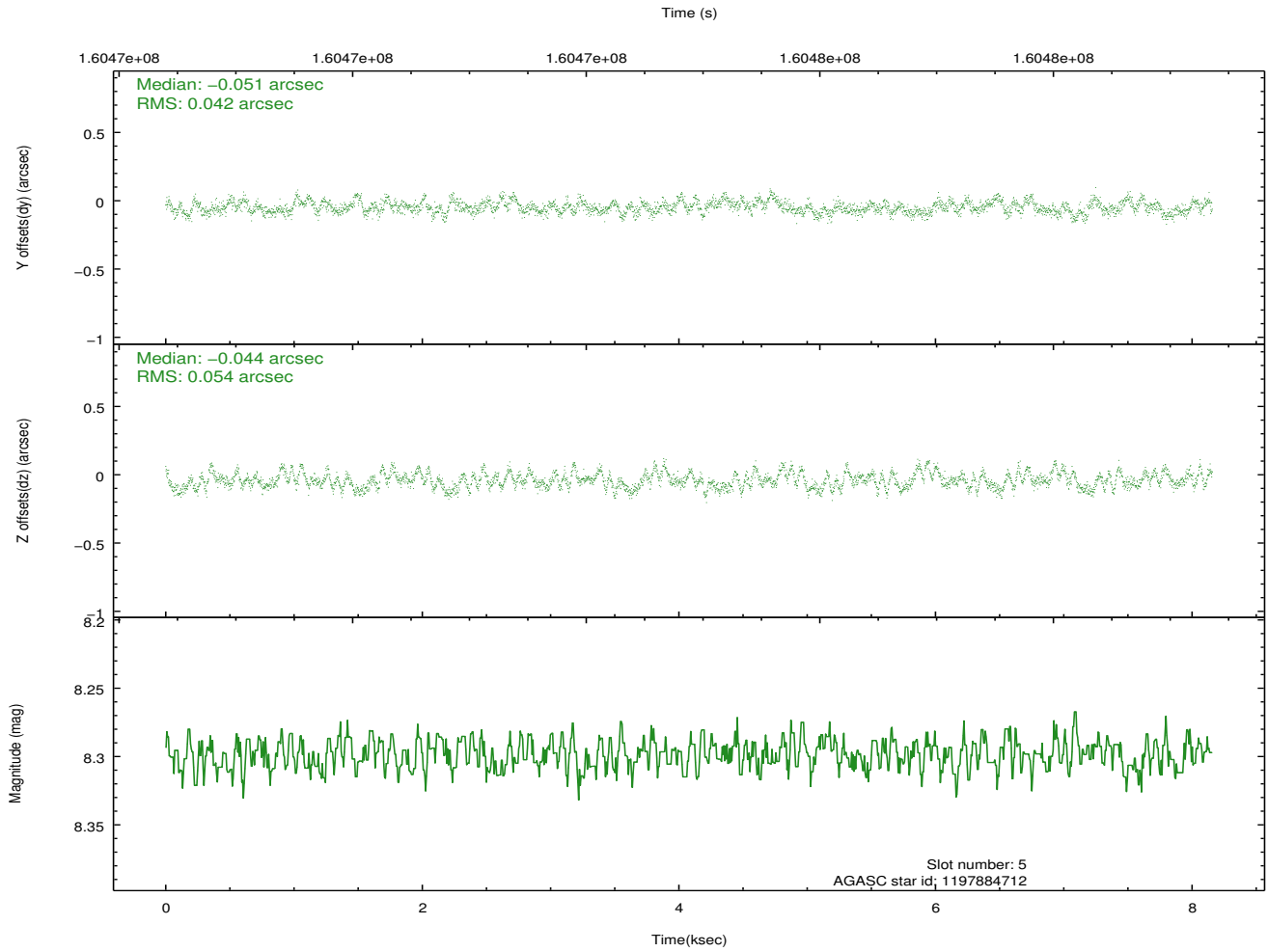
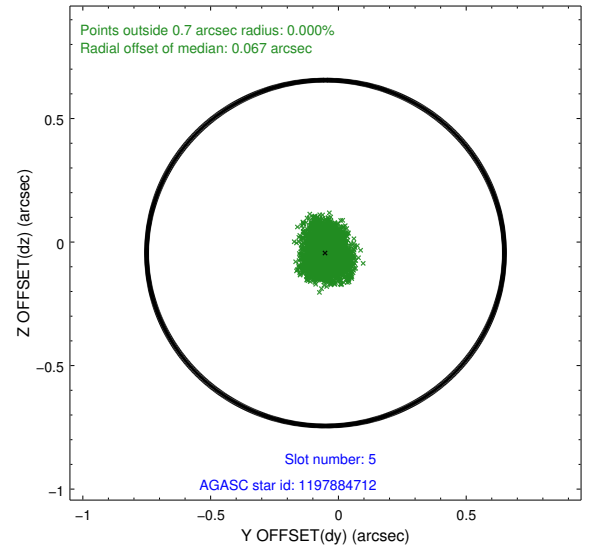
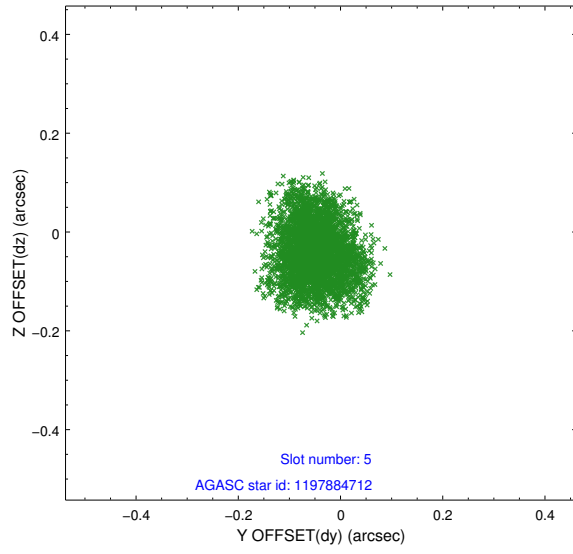
2.4.1 Slot 3



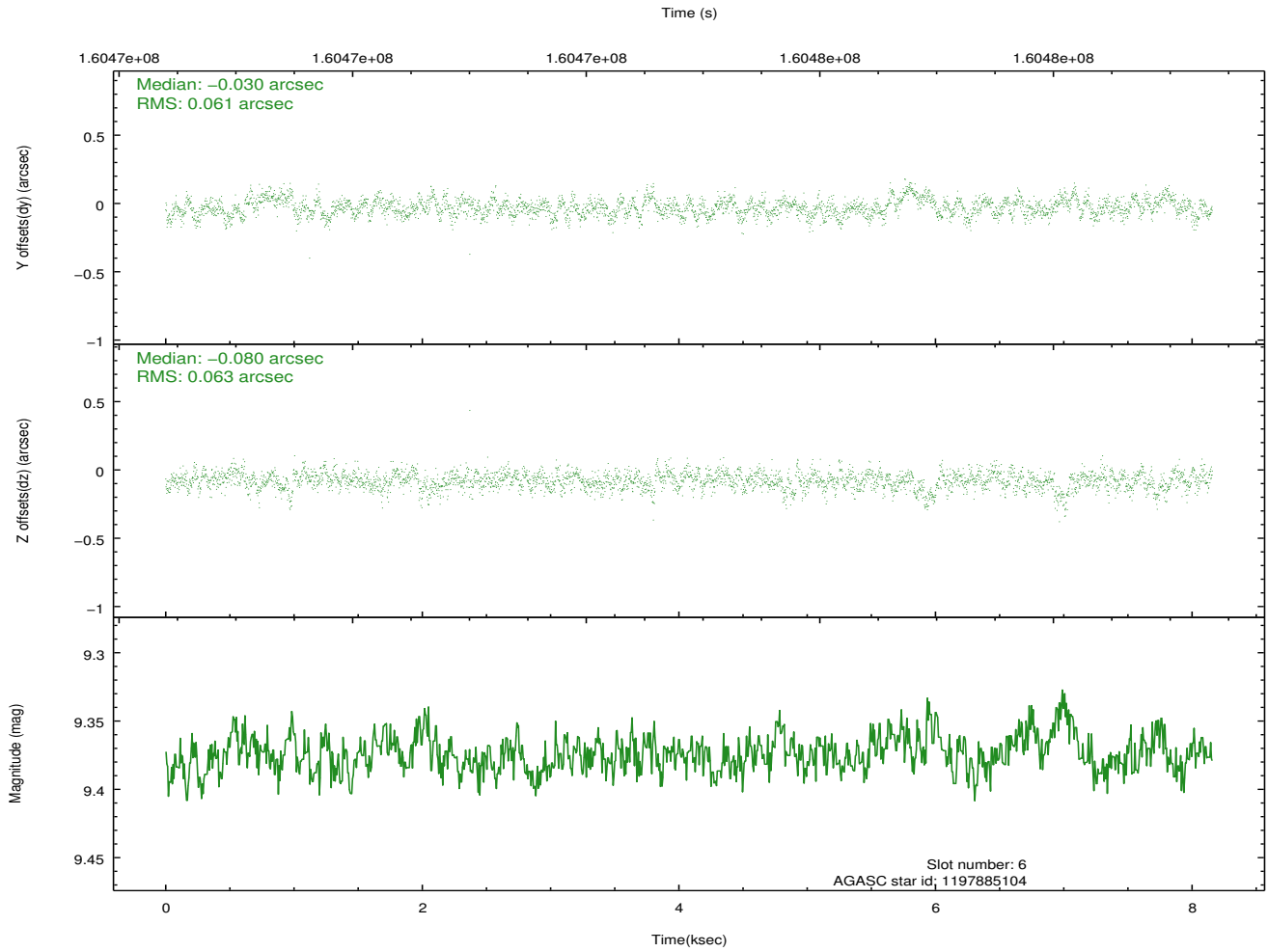
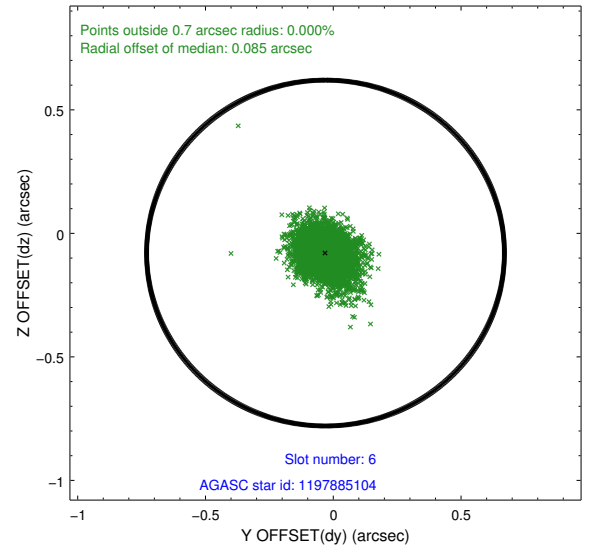
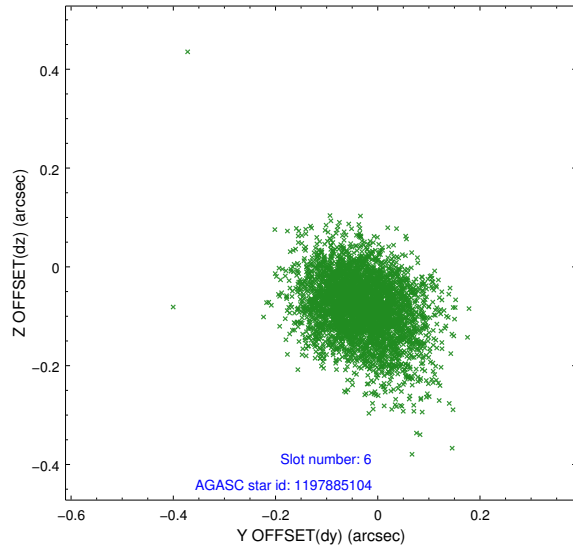
2.4.2 Slot 4



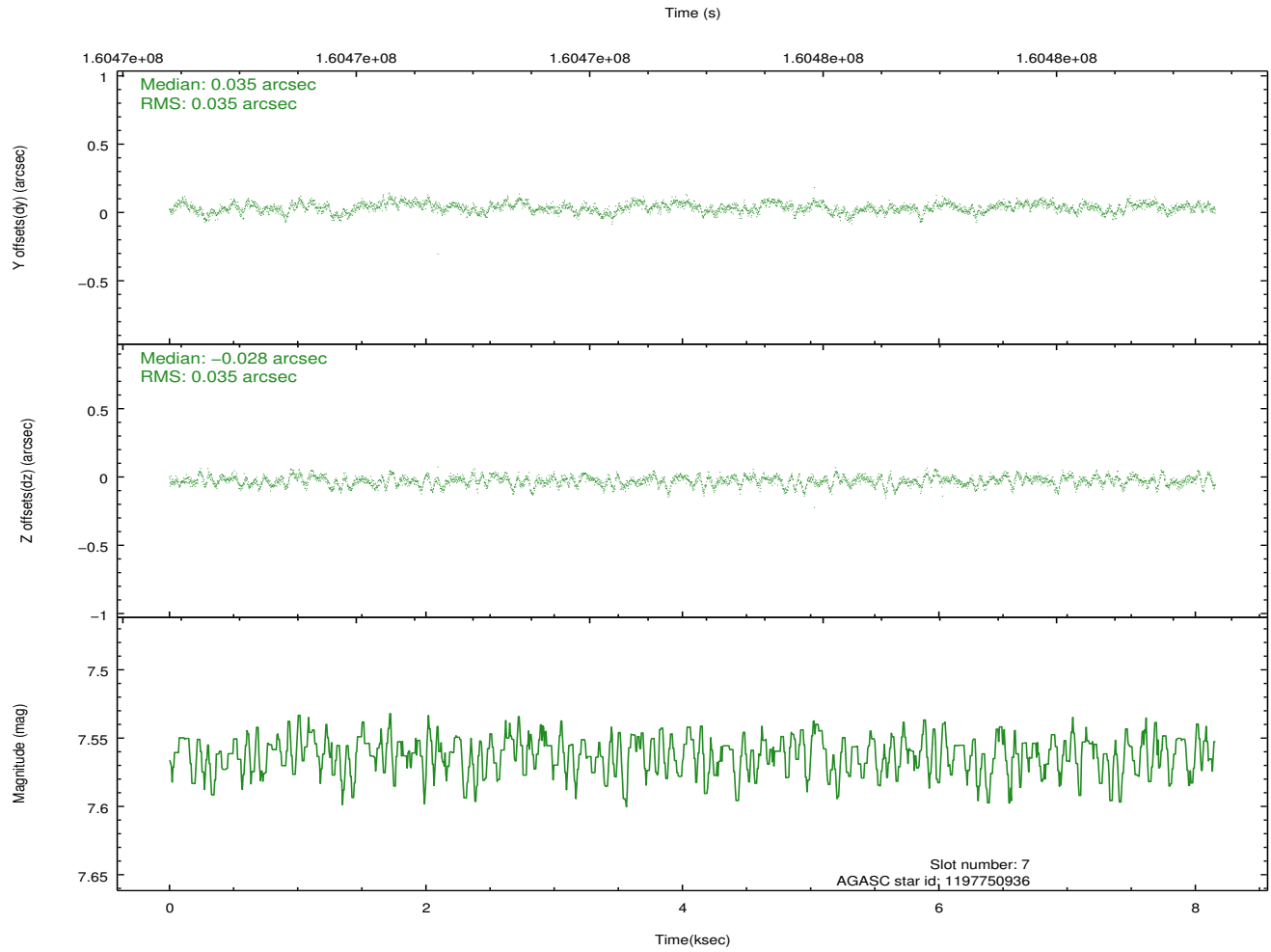
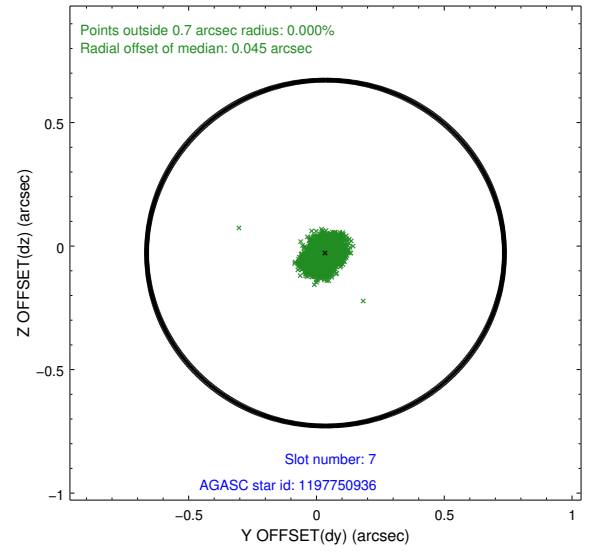
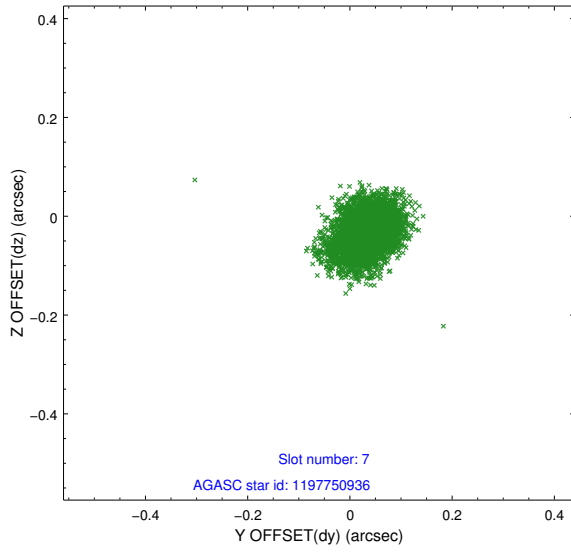
2.4.3 Slot 5



2.4.4 Slot 6

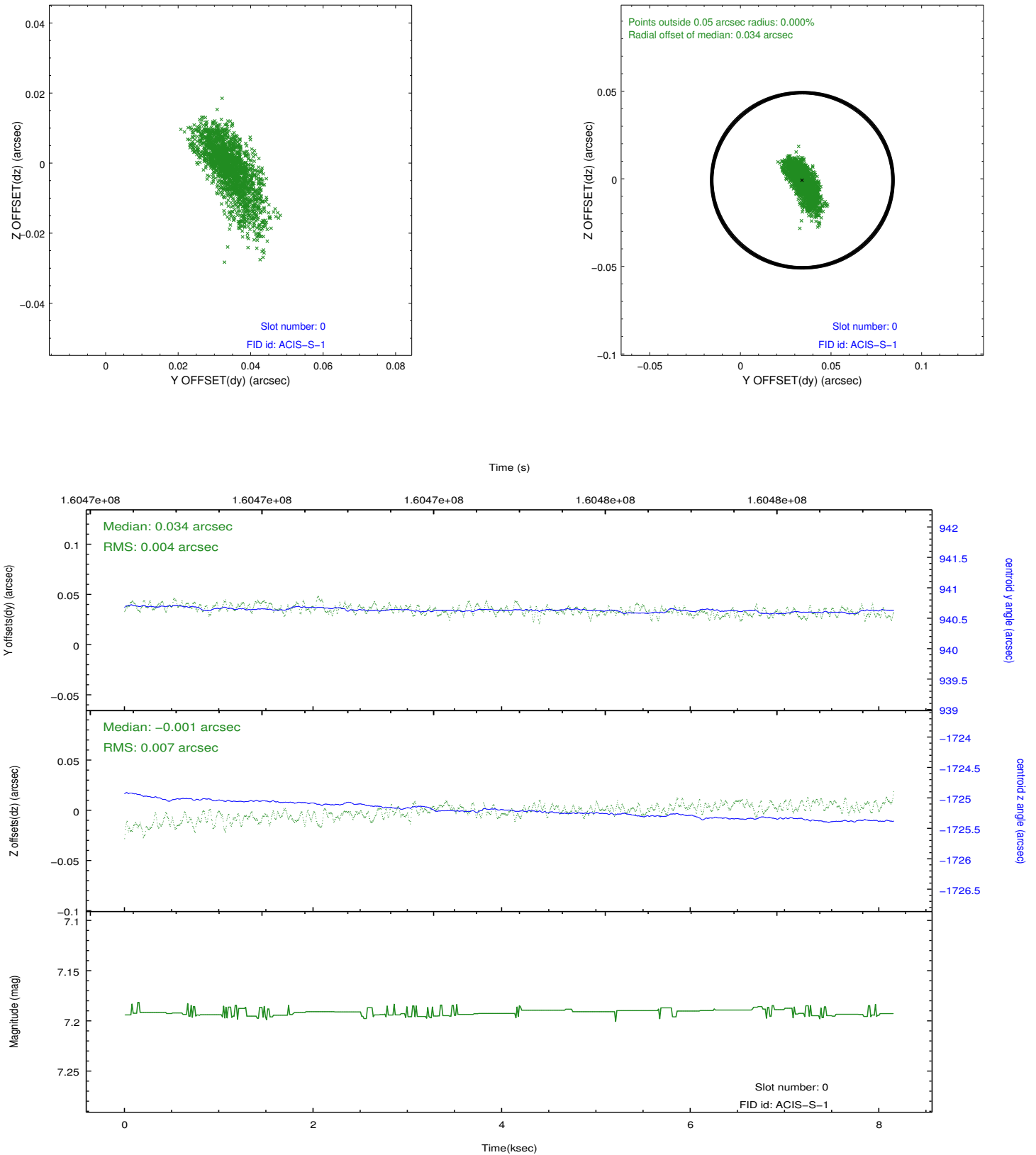


2.4.5 Slot 7

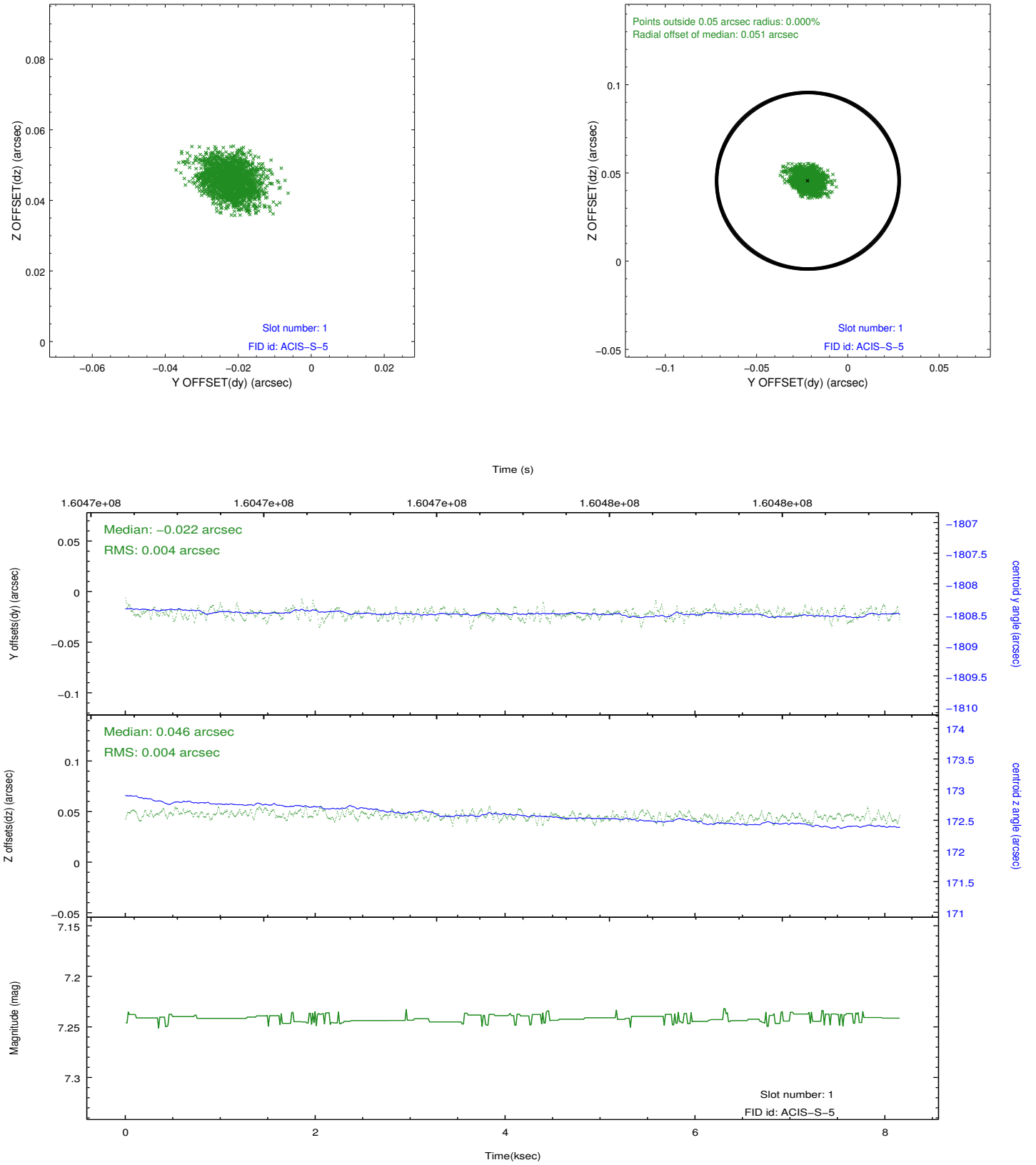


2.5 FID Slots

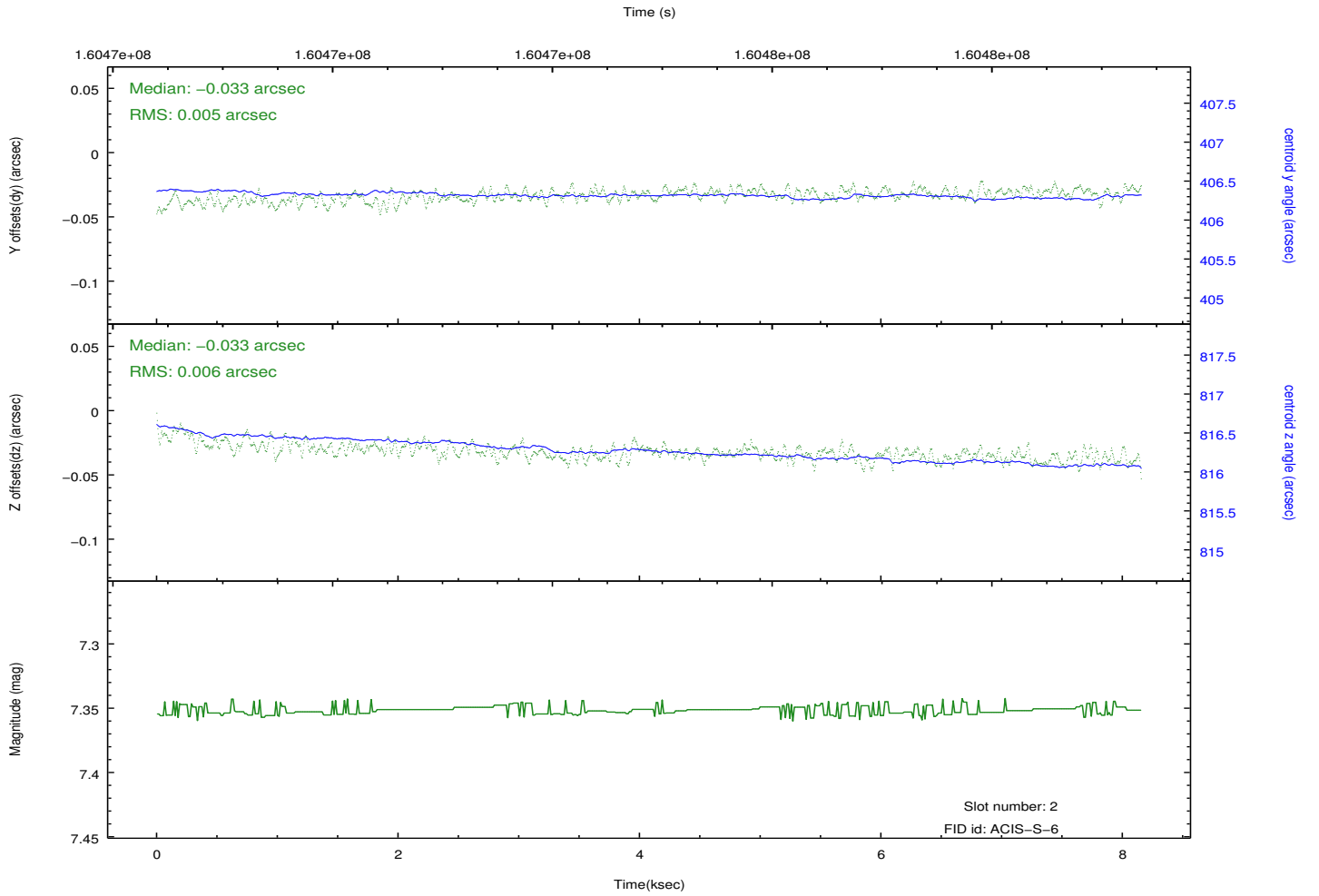
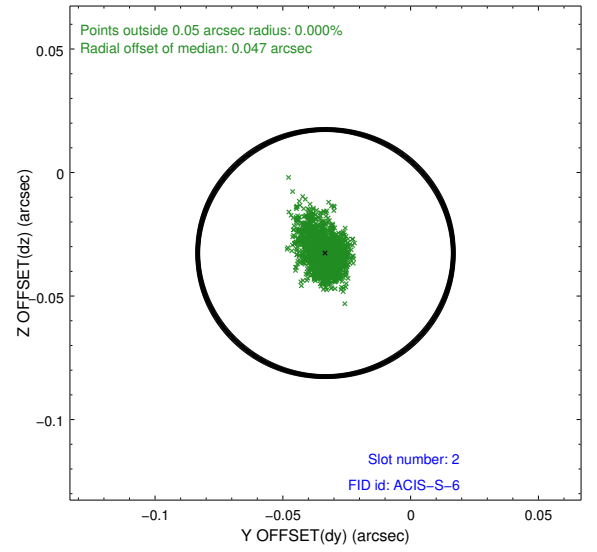
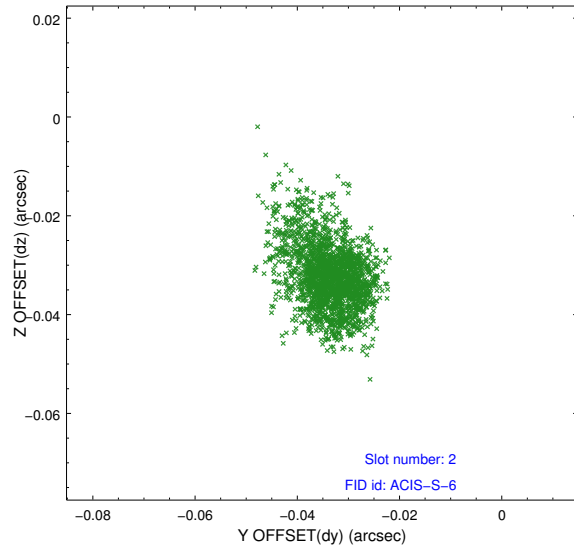
2.5.1 Slot 0



2.5.2 Slot 1



2.5.3 Slot 2



A Summary

A.1 Status

V&V Scientist	Jen Lauer
V&V Date (YYYY-MM-DD)	2012.11.05
V&V Edition	1
V&V Disposition and Status	OK
V&V Charge Time	7.728

A.2 Comments

Window constraint met.