

V&V Reference Report

L2 ASCDS Version : 7.6.9

Observation 3490 - L2 Version 001
Chandra X-Ray Center

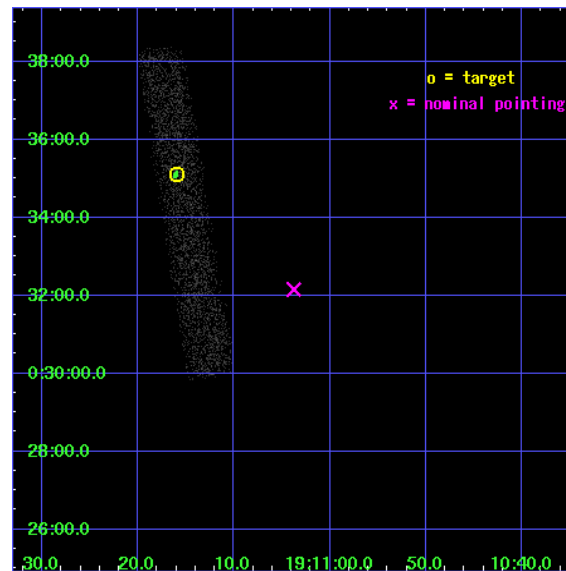
L2 Processing Date : Oct 2 2006

Contents

1	Front	2
2	OBI	3
2.1	OBI	3
2.1.1	Images	3
2.1.2	Bias	3
2.1.3	Parameters	4
2.1.4	Events	4
2.2	Compared Parameters	5
2.3	Aspect	6
2.4	Star Slots	9
2.4.1	Slot 3	9
2.4.2	Slot 4	10
2.4.3	Slot 5	11
2.4.4	Slot 6	12
2.4.5	Slot 7	13
2.5	FID Slots	14
2.5.1	Slot 0	14
2.5.2	Slot 1	15
2.5.3	Slot 2	16
3	Point Sources	17
A	Summary	18
A.1	Status	18
A.2	Comments	18

1 Front

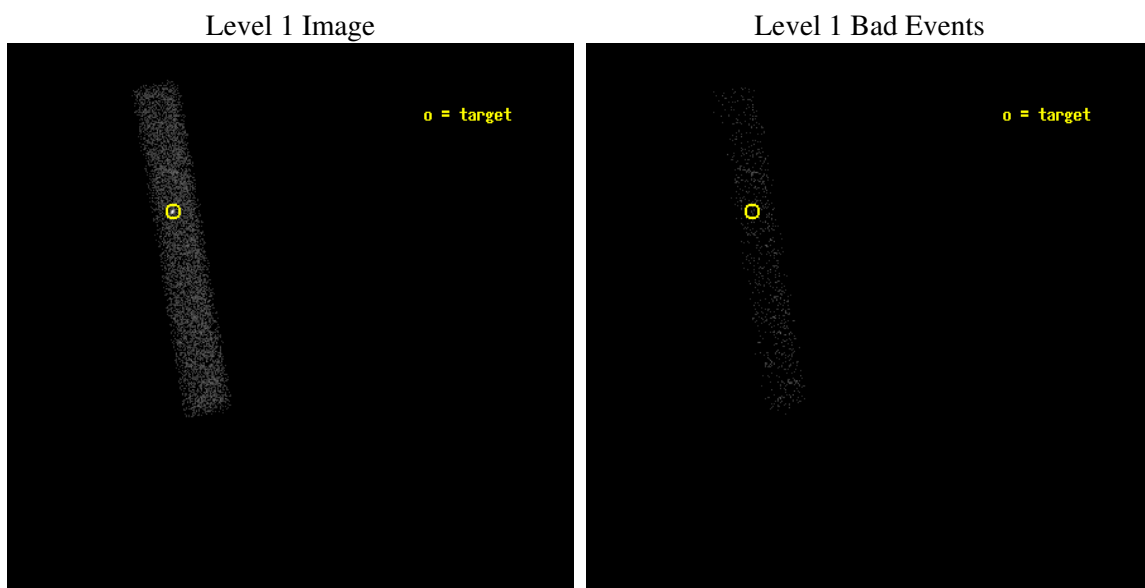
seq_num	400256
obs_id	3490
title	VARIABLE THERMAL EMISSION AND FEATURE FROM AQL X-1 IN QUIESCENCE
observer	Prof. Robert Rutledge
object	AQL X-1
dtcycle	0
cycle	P
ra_targ	287.816667
dec_targ	0.585
ra_nom	287.76573647194
dec_nom	0.5357651954553
roll_nom	260.68228281269
revision	2
ontime	7648.0001139641
livetime	6936.3324088192
ontime7	7648.0001139641
l2events	4375



2 OBI

2.1 OBI

2.1.1 Images



2.1.2 Bias

Chip 7



2.1.3 Parameters

obi_num	0
ascdsver	7.6.9
caldbver	3.2.3
date	2006-10-02T19:26:18
revision	2

sched_exp_time	7000.000000
ontime	7860.1188244522
ontime7	7860.1188244522
l1events	9181

2.1.4 Events

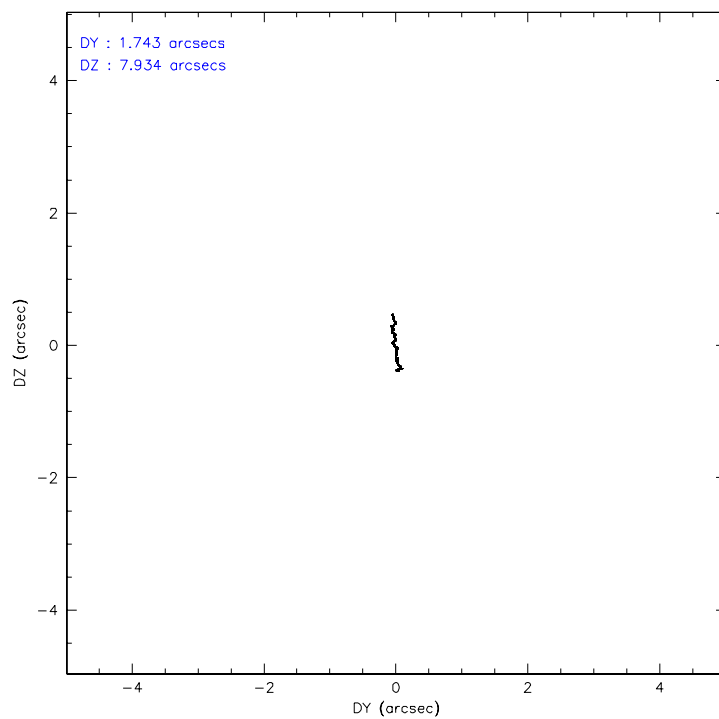
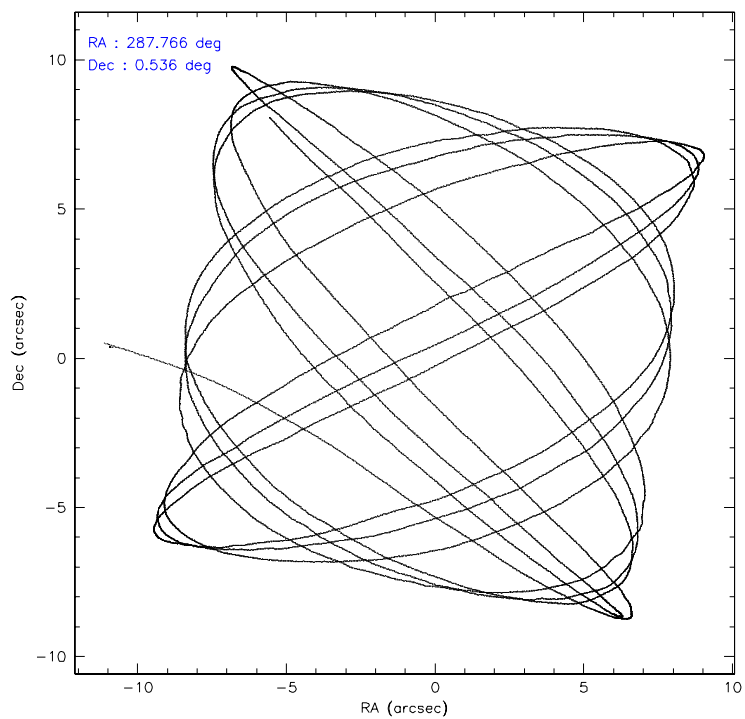
	ccd 7
level 1 events	9181
rejected events	4691
rejected %	51%

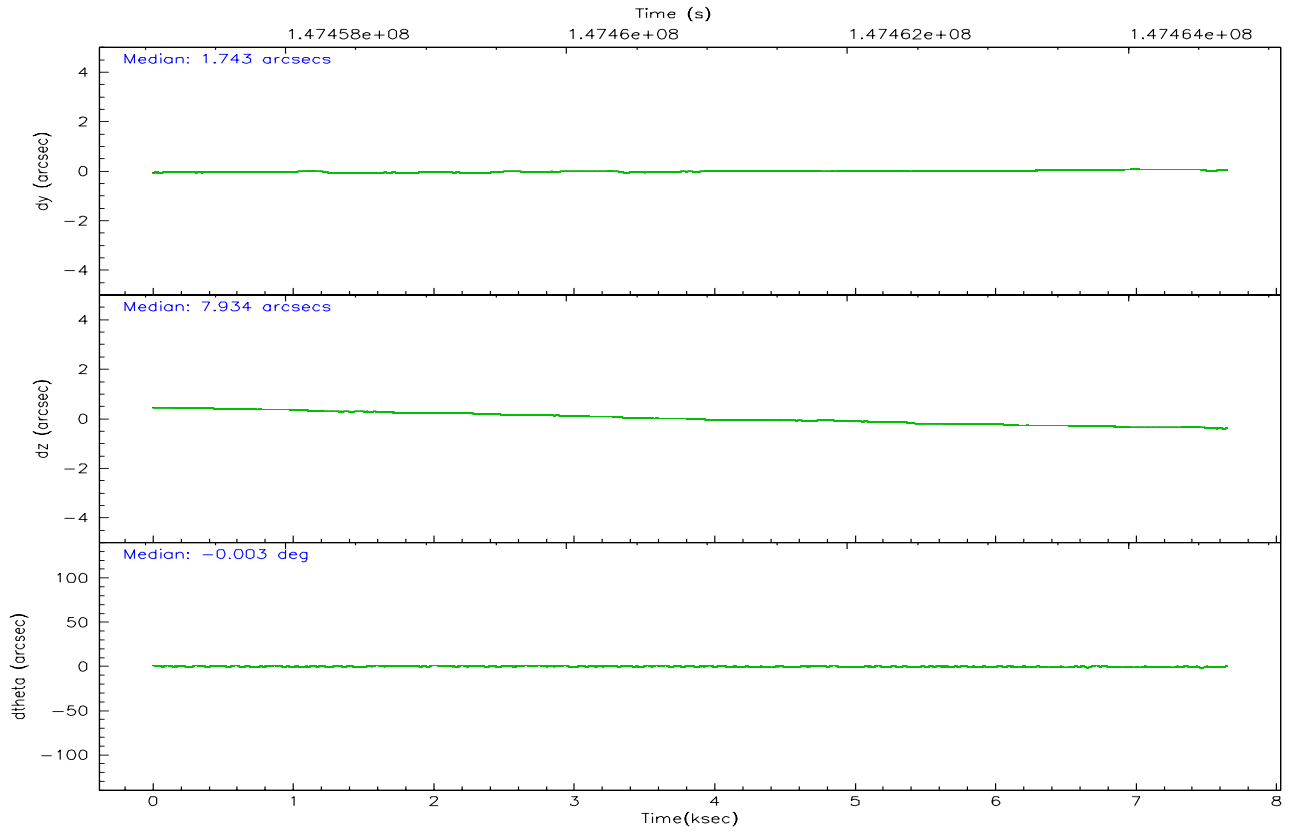
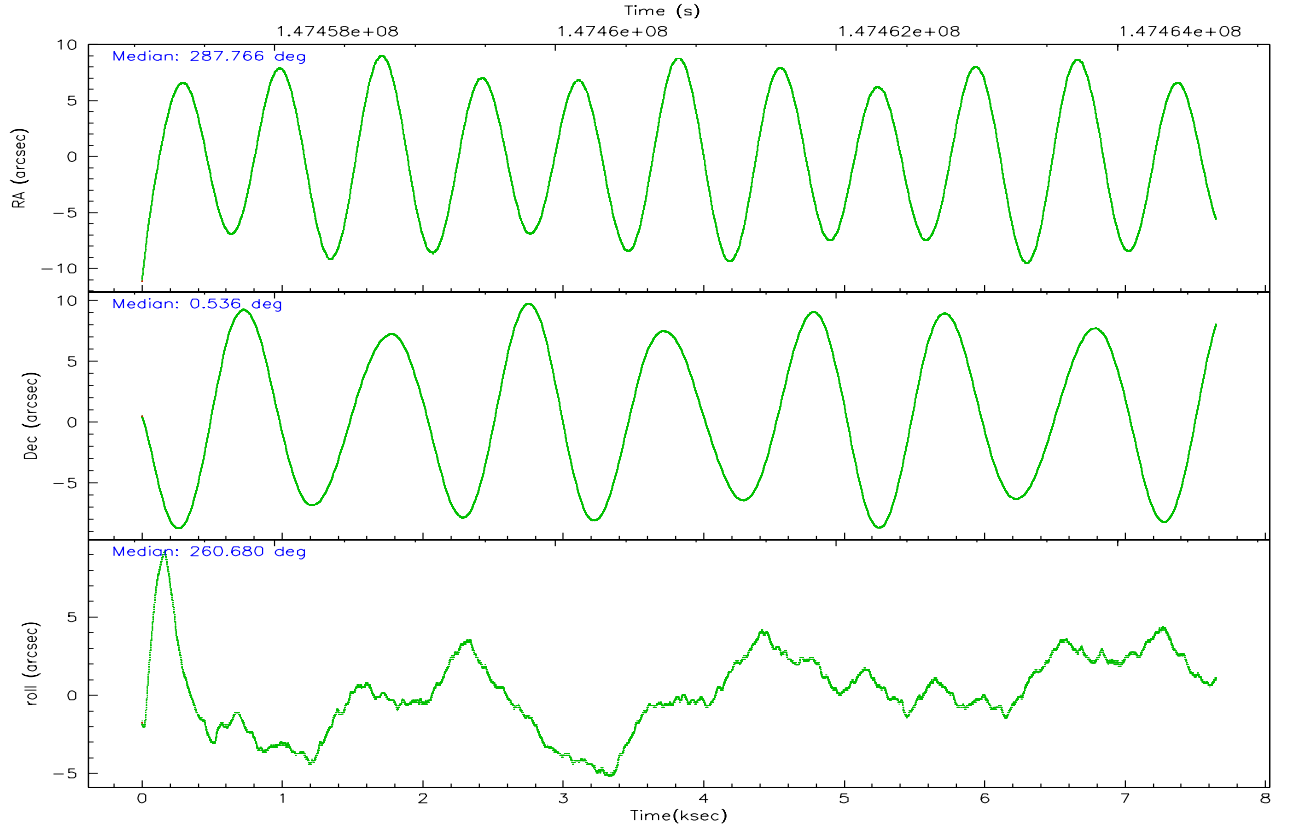
	ccd 7
grade 0 events	555
	6%
grade 1 events	6
	0%
grade 2 events	960
	10%
grade 3 events	537
	5%
grade 4 events	515
	5%
grade 5 events	580
	6%
grade 6 events	2025
	22%
grade 7 events	4003
	43%

2.2 Compared Parameters

Parameter	Planned	Actual	Parameter	Planned	Actual
Instrument	ACIS	ACIS	Obspar format version number	6	6
Detector	ACIS-7	ACIS-7	Obspar file type	PREDICTED	ACTUAL
Grating	NONE	NONE	Obspar update status	NONE	UPDATED
Data mode	FAINT	FAINT	Number of optional ACIS chips dropped	0	0
Observation mode	POINTING	POINTING	On-chip summing requested	N	N
Pointing RA	287.755750	287.7657364719444	Subarray requested	CUSTOM	1/8
Pointing Dec	0.561200	0.5357651954553028	Subarray start row	150	150
Pointing Roll	260.525752	260.6822828126869	Subarray row count	128	128
SIM focus pos (mm)	-0.684267	-0.6828225247311905	Alternating exposures requested	N	N
SIM defocus (mm)	0	0.001444936568705701	Primary exposure time	0.000000	0.4
SIM translation stage pos (mm)	-190.132523	-190.1400660498719			
SIM translation stage offset (mm)	0	0.00754346686406393			
Observation start time	147457706.184000	147456515.11388			
Observation start date	2002-09-03T16:27:22	2002-09-03T16:08:35			
Observation end time	147464706.184000	147465369.06425			
Observation end date	2002-09-03T18:24:02	2002-09-03T18:36:09			
Read mode	TIMED	TIMED			

2.3 Aspect



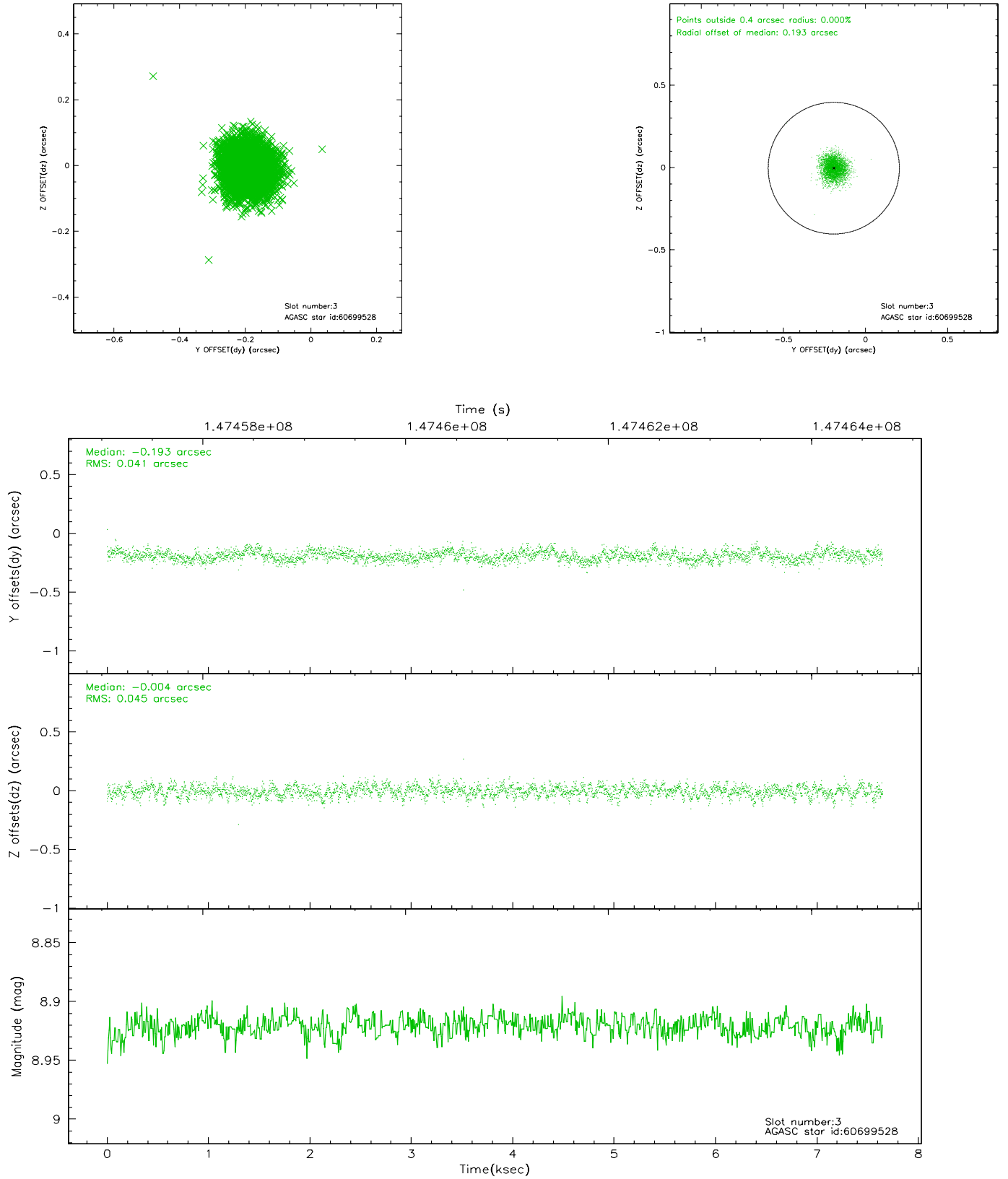


Slot Statistics

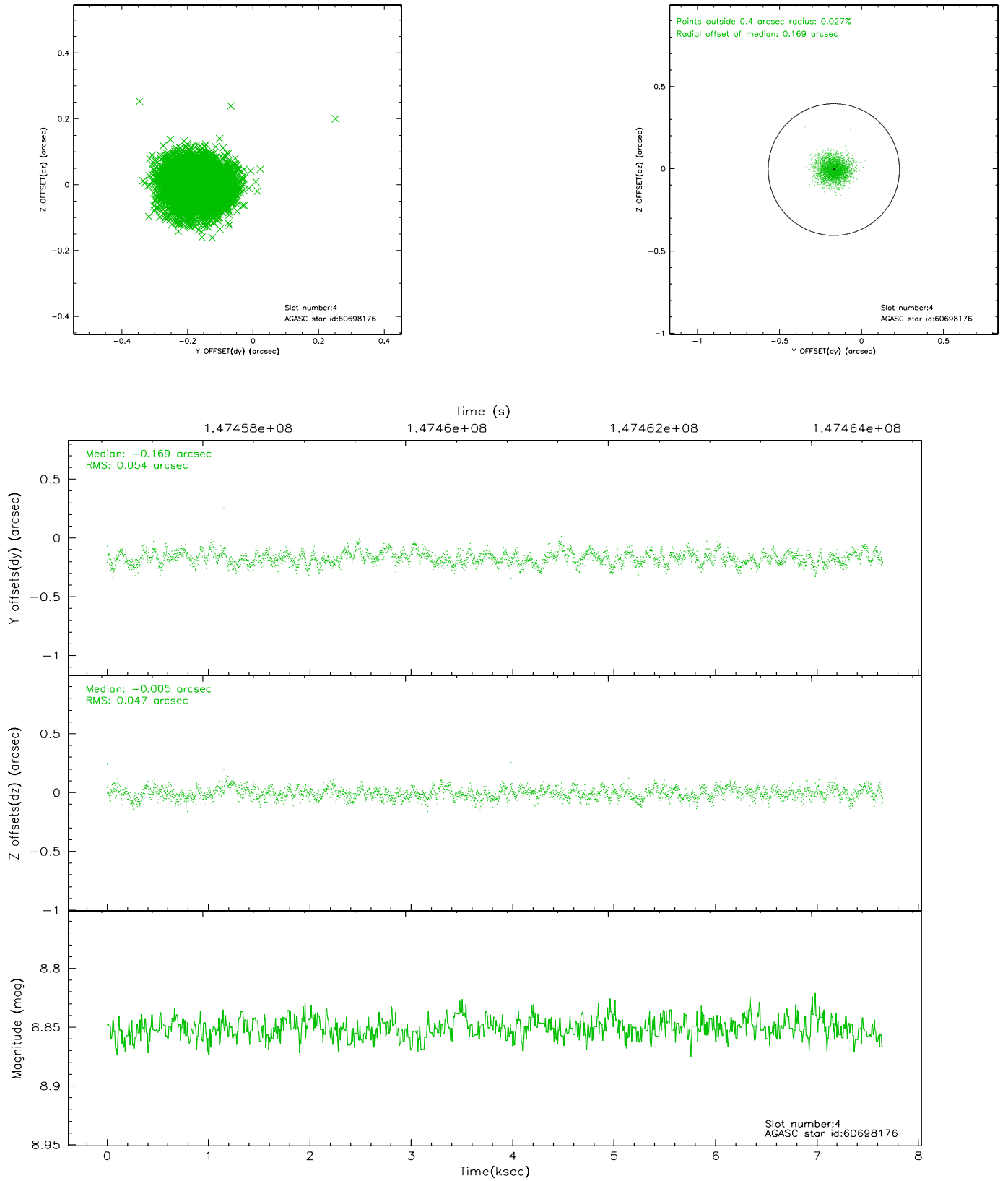
slot	status	id	mag	n_pts	med_dy	med_dz	dr1	dr2	ra	dec	mean_y	mean_z
0	FID	ACIS-S-2	7.11	1866	-0.016	0.009	0.006	0.011	0.000000	0.000000	-754.38	-1729.13
1	FID	ACIS-S-4	7.20	1866	-0.051	0.006	0.005	0.010	0.000000	0.000000	2158.55	178.55
2	FID	ACIS-S-5	7.23	1866	0.036	-0.005	0.007	0.011	0.000000	0.000000	-1806.19	173.10
3	GUIDE	60699528	8.92	3732	-0.193	-0.004	0.064	0.104	287.344521	1.231468	-2136.51	-1857.04
4	GUIDE	60698176	8.85	3729	-0.169	-0.005	0.076	0.121	287.425571	1.234708	-2196.18	-1571.69
5	GUIDE	60705928	9.02	3730	0.035	0.015	0.069	0.114	287.833535	0.715711	-595.14	184.43
6	GUIDE	60710592	9.39	3730	0.185	-0.091	0.119	0.183	287.035703	0.265770	1475.97	-2381.52
7	GUIDE	672281216	9.32	3731	0.142	0.087	0.099	0.161	287.454836	-0.067927	2413.00	-696.00

2.4 Star Slots

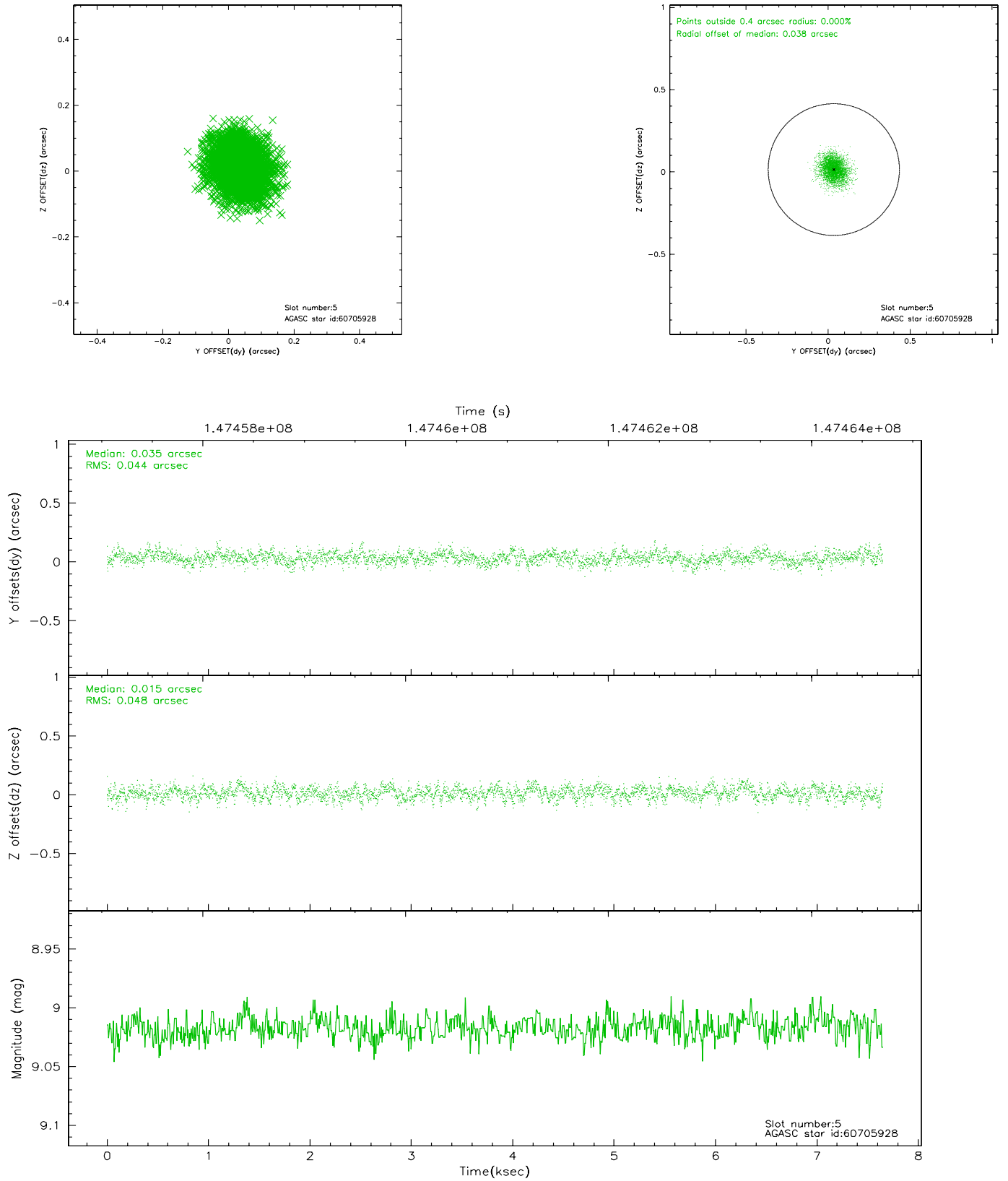
2.4.1 Slot 3



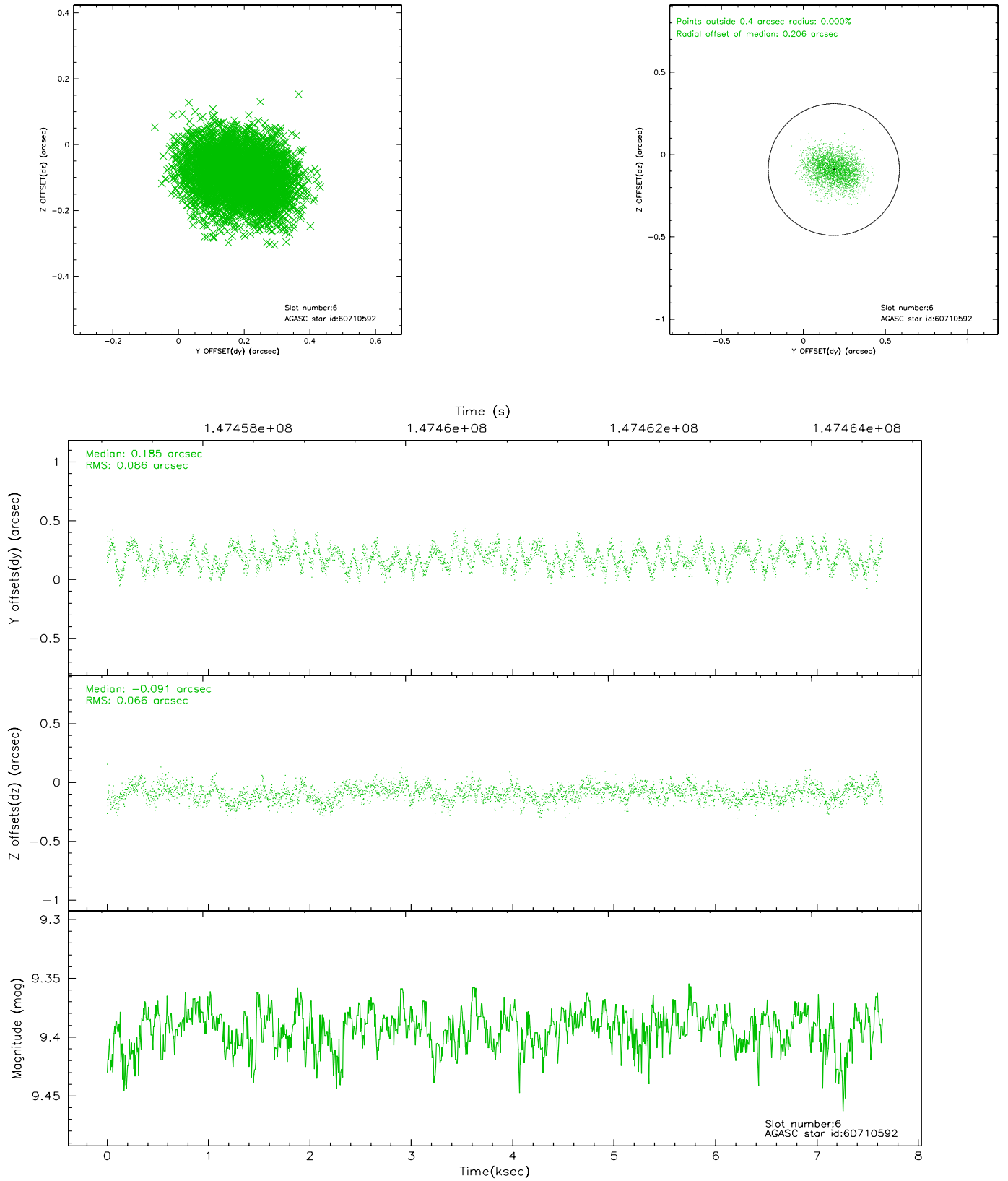
2.4.2 Slot 4



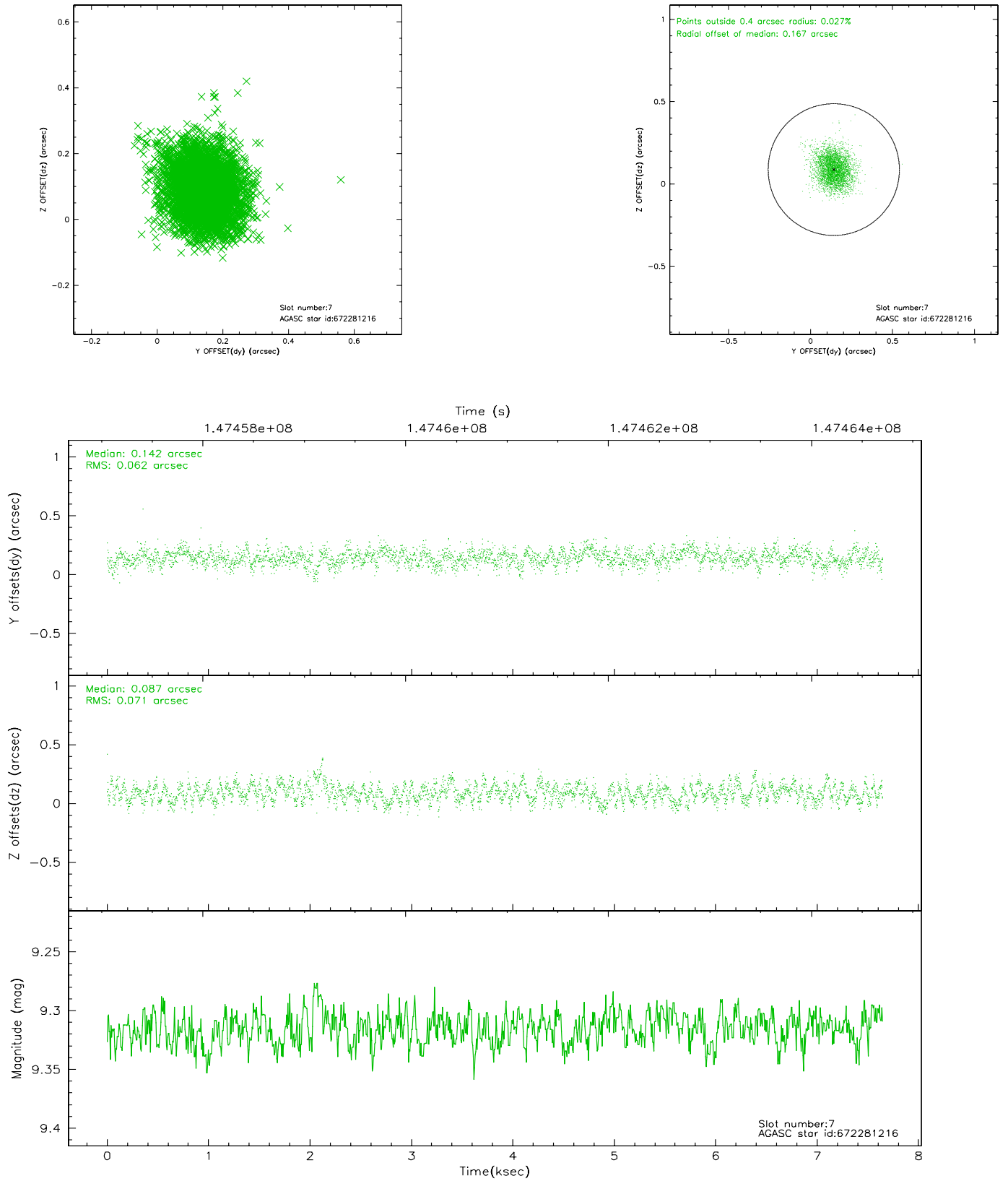
2.4.3 Slot 5



2.4.4 Slot 6

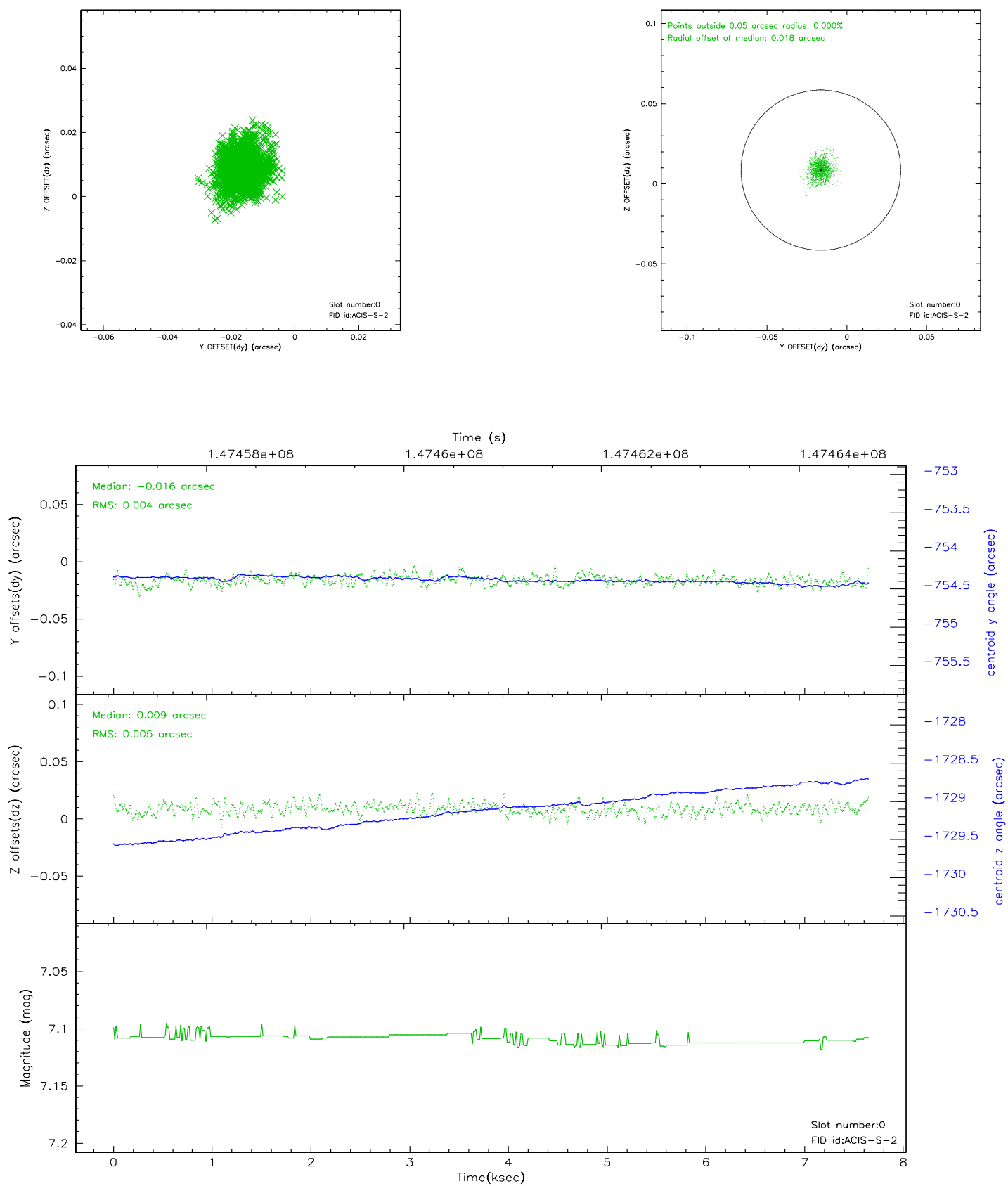


2.4.5 Slot 7

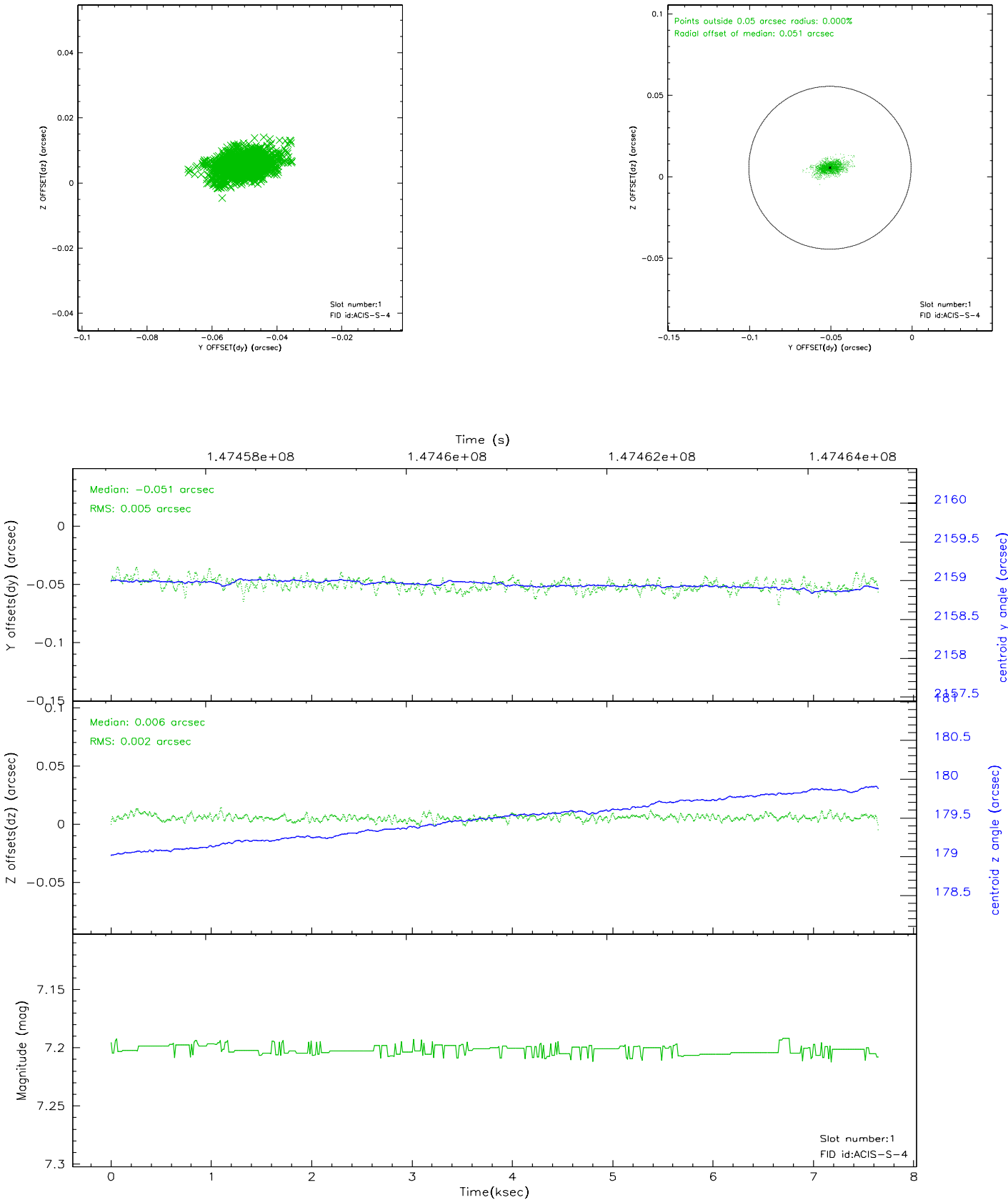


2.5 FID Slots

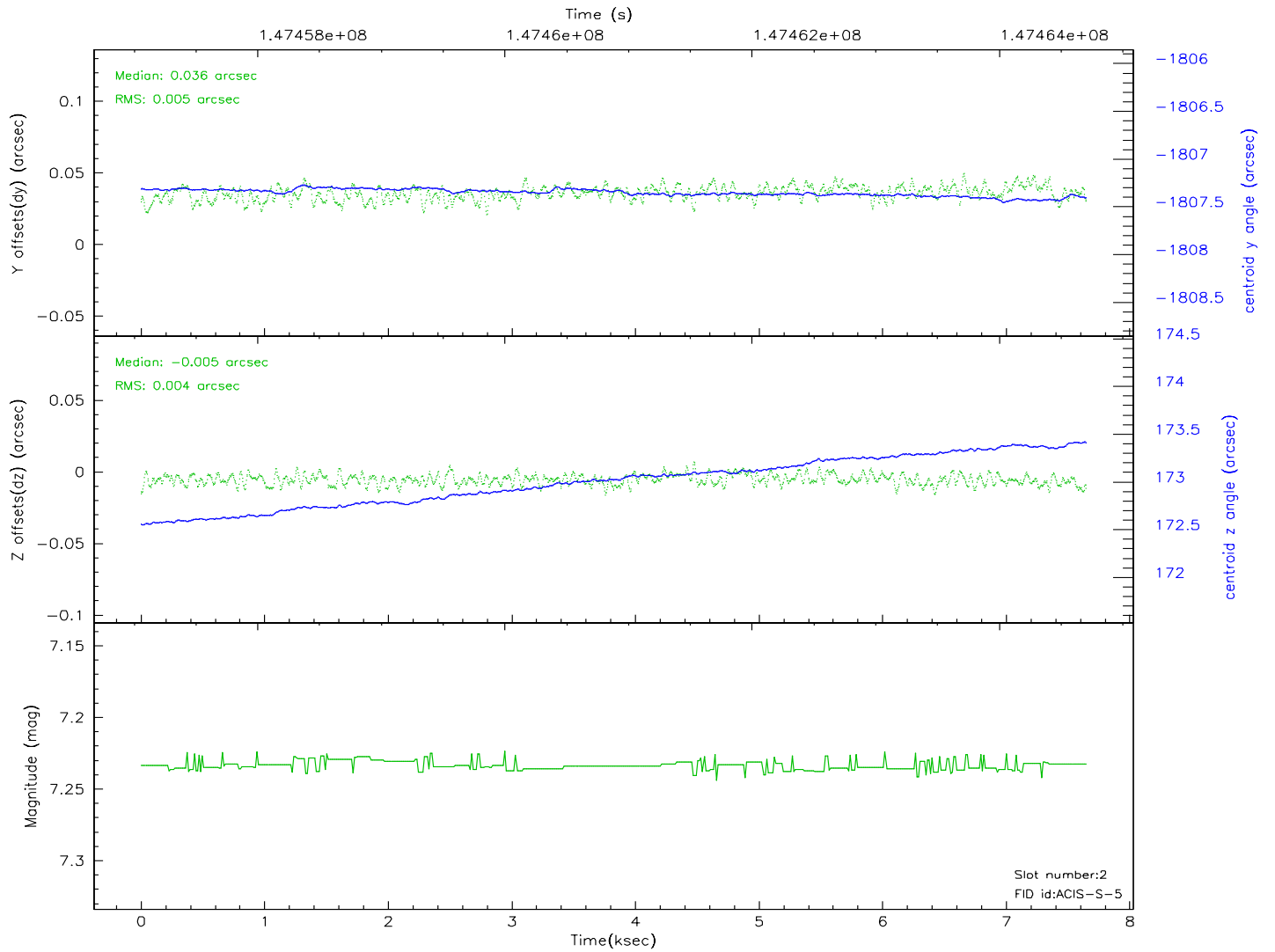
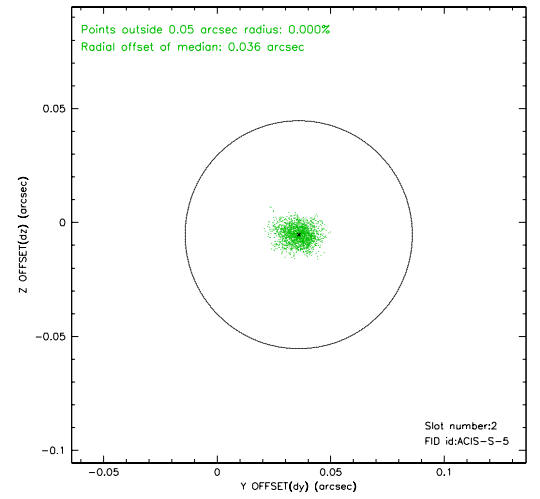
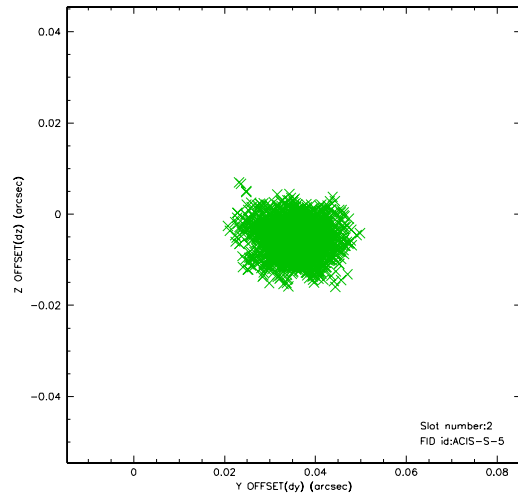
2.5.1 Slot 0



2.5.2 Slot 1

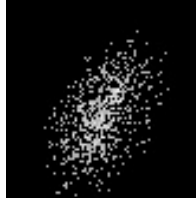


2.5.3 Slot 2



3 Point Sources

4.25 arcmin



A Summary

A.1 Status

V&V Scientist	Jen Lauer
V&V Date (YYYY-MM-DD)	2006.10.03
V&V Edition	1
V&V Disposition and Status	OK
V&V Charge Time	7.648

A.2 Comments

Monitor constraint met.