

V&V Reference Report

L2 ASCDS Version : 8.4.5

Observation 3270 - L2 Version 3
Chandra X-Ray Center

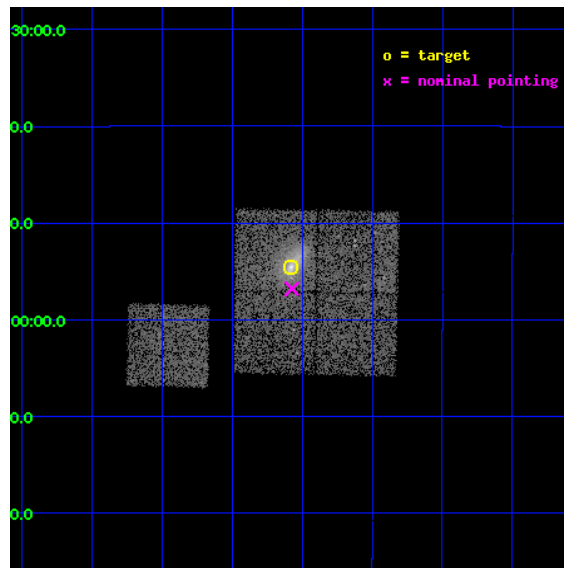
L2 Processing Date : Oct 3 2012

Contents

1	Front	2
2	OBI	3
2.1	OBI	3
2.1.1	Images	3
2.1.2	Bias	3
2.1.3	Parameters	4
2.1.4	Events	4
2.2	Compared Parameters	5
2.3	Aspect	6
2.4	Star Slots	9
2.4.1	Slot 3	9
2.4.2	Slot 4	10
2.4.3	Slot 5	11
2.4.4	Slot 6	12
2.4.5	Slot 7	13
2.5	FID Slots	14
2.5.1	Slot 0	14
2.5.2	Slot 1	15
2.5.3	Slot 2	16
A	Summary	17
A.1	Status	17
A.2	Comments	17

1 Front

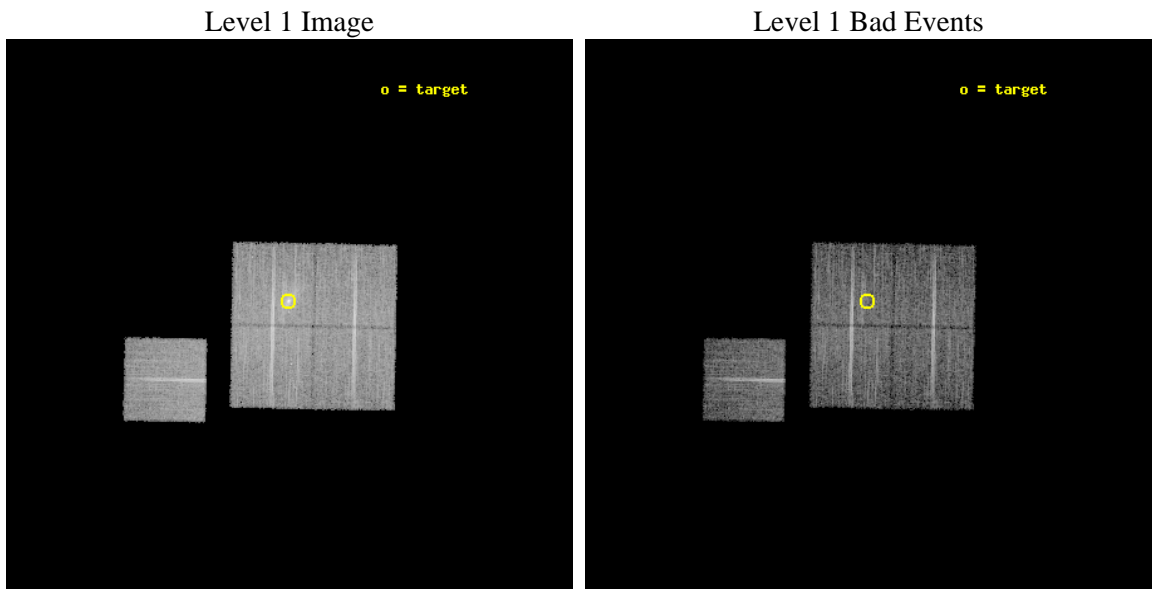
seq_num	800270	Sequence number
obs_id	3270	Observation id
title	MACS: THE X-RAY PROPERTIES OF THE MOST MASSIVE GALAXY CLUSTERS AT $Z>0.3$	Proposal title
observer	Dr. Harald Ebeling	Principal investigator
object	MACSJ0417.5-1154	Source name
dtcycle	0	
cycle	P	events from which exps? Prim/Second/Both
ra_targ	64.394583	Observer's specified target RA [deg]
dec_targ	-11.909167	Observer's specified target Dec [deg]
ra_nom	64.39334030752	Nominal RA [deg]
dec_nom	-11.946875007988	Nominal Dec [deg]
roll_nom	271.13340203425	Nominal Roll [deg]
revision	3	Processing version of data
ontime	12173.699976593	Sum of GTIs [s]
livetime	12014.641624252	Livetime [s]
ontime0	12173.699976593	Sum of GTIs [s]
ontime1	12173.699976593	Sum of GTIs [s]
ontime2	12173.699976593	Sum of GTIs [s]
ontime3	12173.699976593	Sum of GTIs [s]
ontime6	12173.699976593	Sum of GTIs [s]
l2events	38352	Number of level 2 events



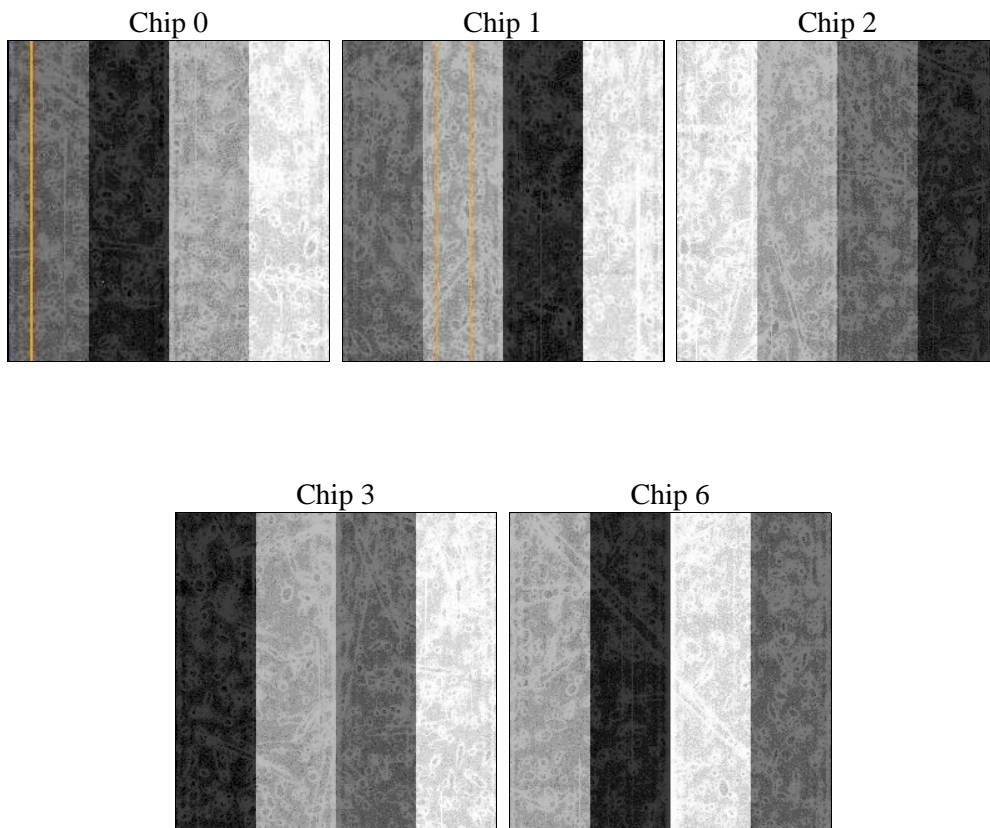
2 OBI

2.1 OBI

2.1.1 Images



2.1.2 Bias



2.1.3 Parameters

obi_num	1	Obi number	sched_exp_time	12000.000000	[s] Scheduled observation exposure time
ascdsver	8.4.5	Processing system revision	ontime	12173.699976593	Sum of GTIs [s]
caldsver	4.5.2	 	ontime0	12173.699976593	Sum of GTIs [s]
date	2012-10-03T19:51:38	Date and time of file creation	ontime1	12173.699976593	Sum of GTIs [s]
revision	3	Processing version of data	ontime2	12173.699976593	Sum of GTIs [s]
			ontime3	12173.699976593	Sum of GTIs [s]
			ontime6	12173.699976593	Sum of GTIs [s]
			l1events	359356	Number of level 1 events

2.1.4 Events

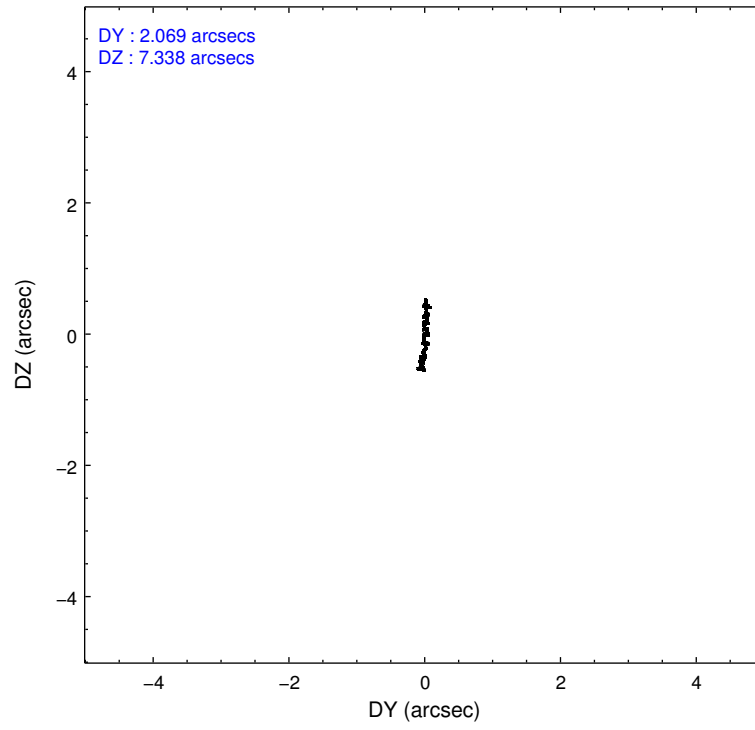
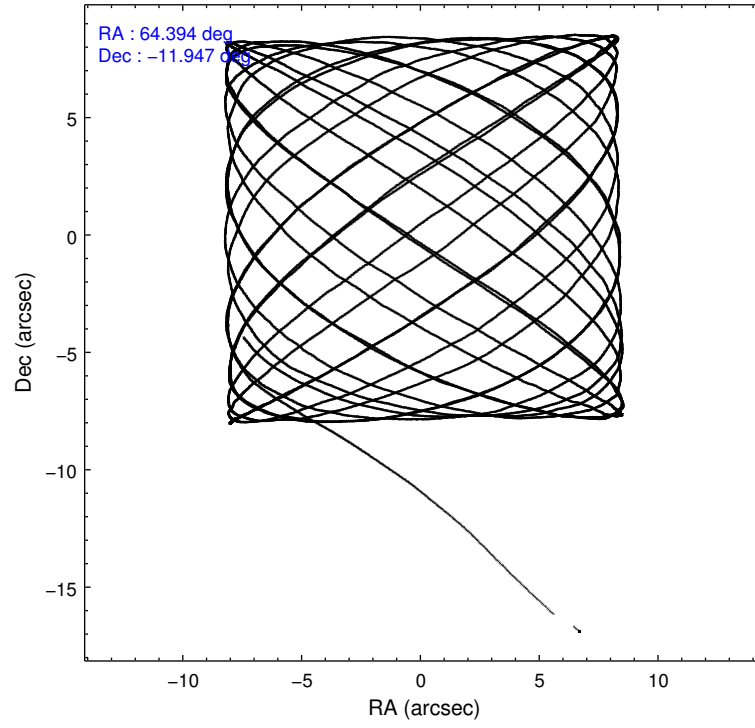
	ccd 0	ccd 1	ccd 2	ccd 3	ccd 6
level 1 events	65347	66627	75743	81690	69949
rejected events	58479	58752	68651	65741	62880
rejected %	89%	88%	90%	80%	89%

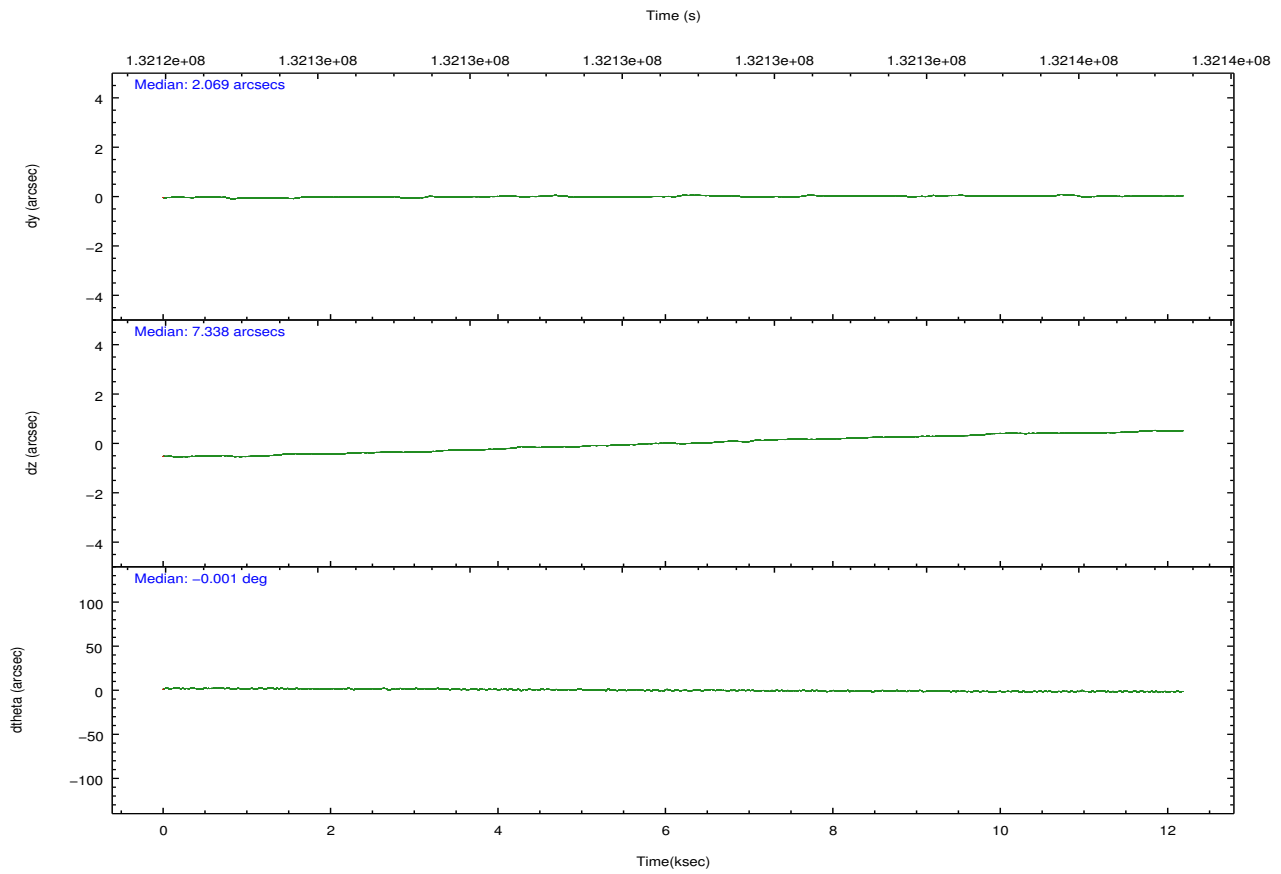
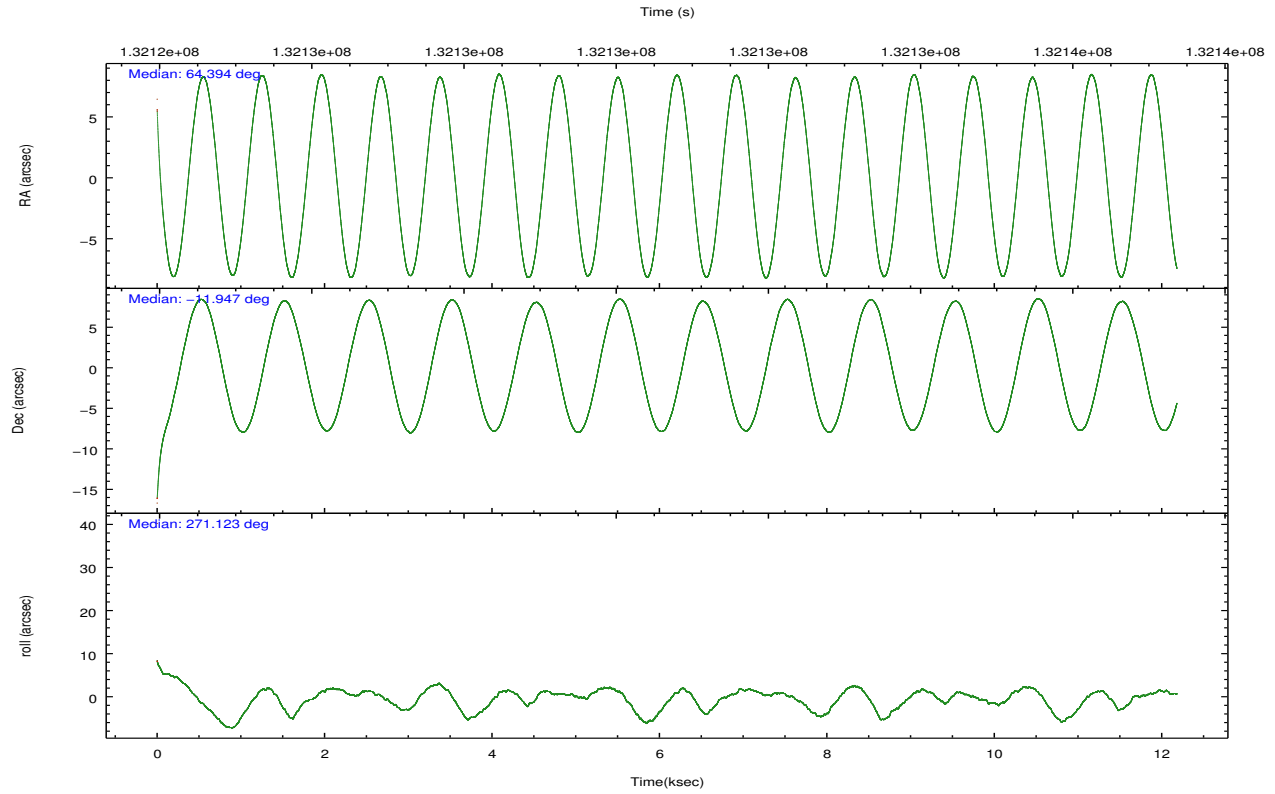
	ccd 0	ccd 1	ccd 2	ccd 3	ccd 6
grade 0 events	2391	3071	2714	10024	2543
	3%	4%	3%	12%	3%
grade 1 events	26	34	43	69	26
	0%	0%	0%	0%	0%
grade 2 events	1630	1548	1575	2264	1507
	2%	2%	2%	2%	2%
grade 3 events	815	914	758	1043	791
	1%	1%	1%	1%	1%
grade 4 events	774	885	737	1019	846
	1%	1%	0%	1%	1%
grade 5 events	2240	2442	2064	2504	2545
	3%	3%	2%	3%	3%
grade 6 events	1268	1469	1310	1611	1389
	1%	2%	1%	1%	1%
grade 7 events	56203	56264	66542	63156	60302
	86%	84%	87%	77%	86%

2.2 Compared Parameters

Parameter	Planned	Actual	Parameter	Planned	Actual
Instrument	ACIS	ACIS	Obspar format version number	7	7
Detector	ACIS-01236	ACIS-01236	Obspar file type	PREDICTED	ACTUAL
Grating	NONE	NONE	Obspar update status	NONE	UPDATED
Data mode	VFAINT	VFAINT	Number of optional ACIS chips dropped	0	0
Observation mode	POINTING	POINTING	On-chip summing requested	N	N
[deg] Pointing RA	64.378808	64.39334030751964	Subarray requested	NONE	NONE
[deg] Pointing Dec	-11.923420	-11.94687500798836	Alternating exposures requested	N	N
[deg] Pointing Roll	270.921713	271.1334020342501	[s] Primary exposure time	0.000000	3.1
[mm] SIM focus pos	-0.782348	-0.7809083437167272			
[mm] SIM defocus	0	0.001439871863259334			
[mm] SIM translation stage pos	-227.742463	-227.734108438797			
[mm] SIM translation stage offset	-5.85	-5.858344564132665			
[s] Observation start time (MET)	132124758.184000	132123765.49947			
Observation start date	2002-03-10T05:18:14	2002-03-10T05:02:45			
[s] Observation end time (MET)	132136758.184000	132137405.17502			
Observation end date	2002-03-10T08:38:14	2002-03-10T08:50:05			
Read mode	TIMED	TIMED			

2.3 Aspect



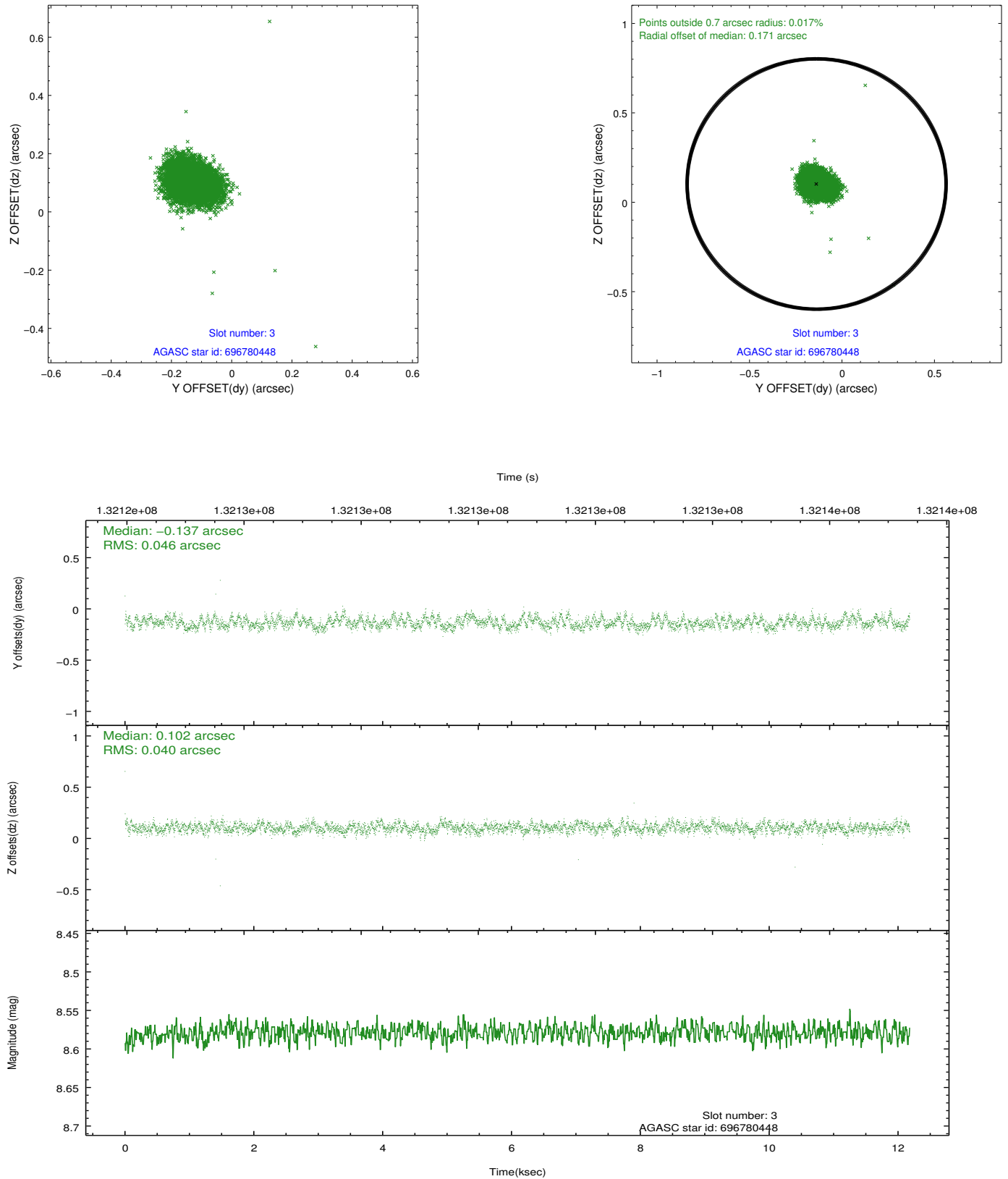


Slot Statistics

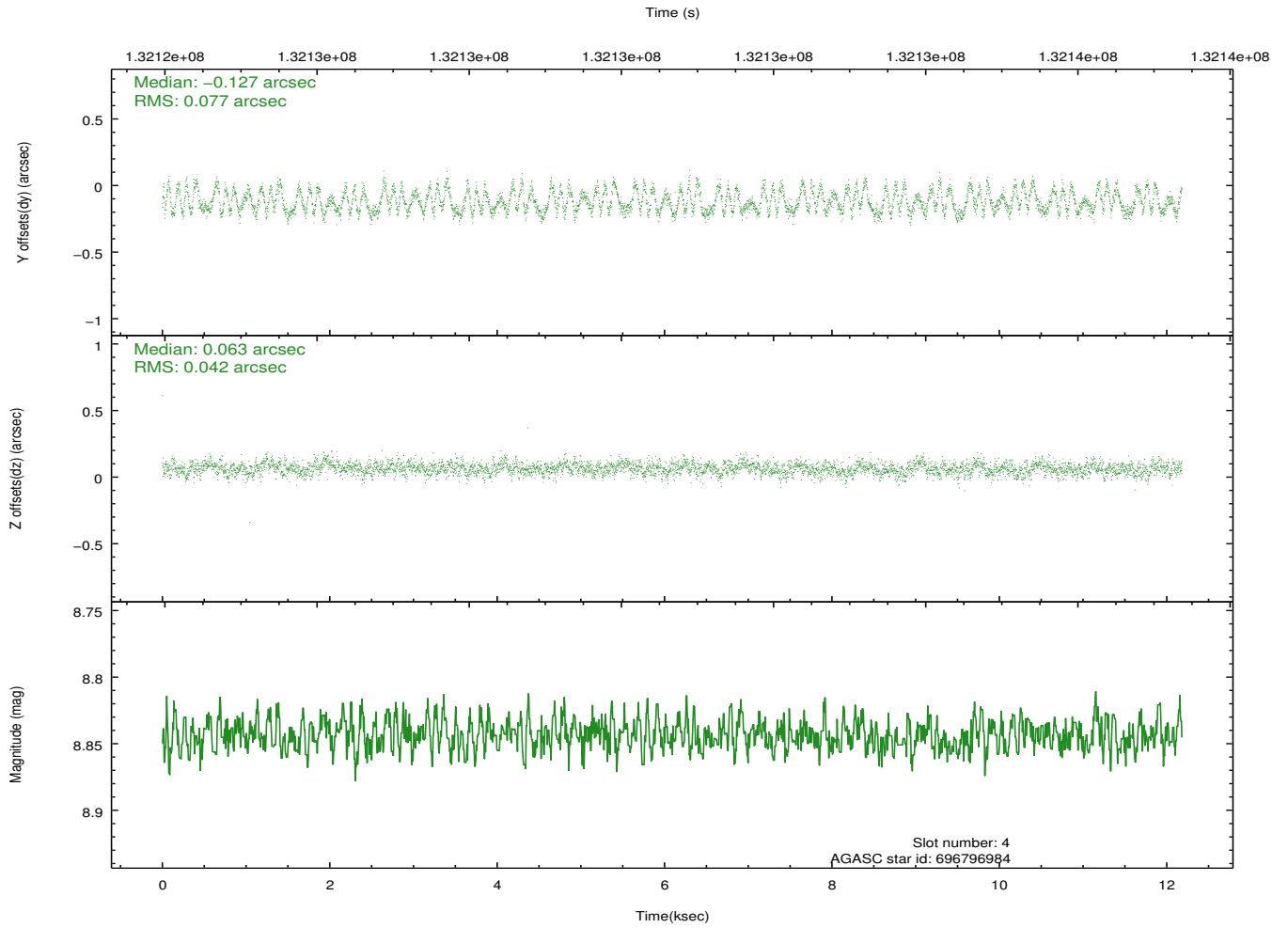
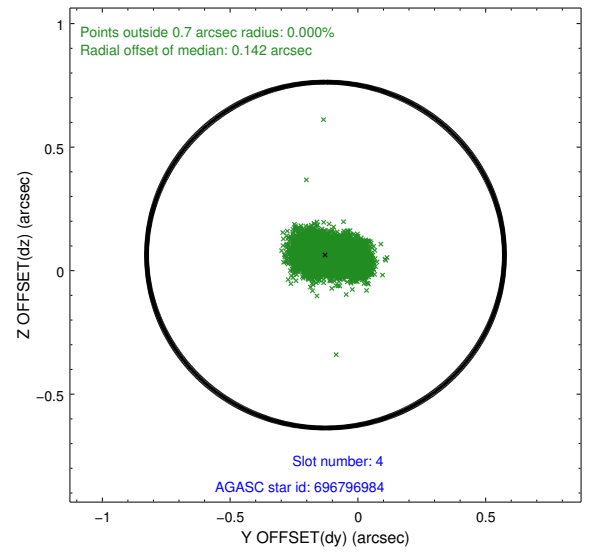
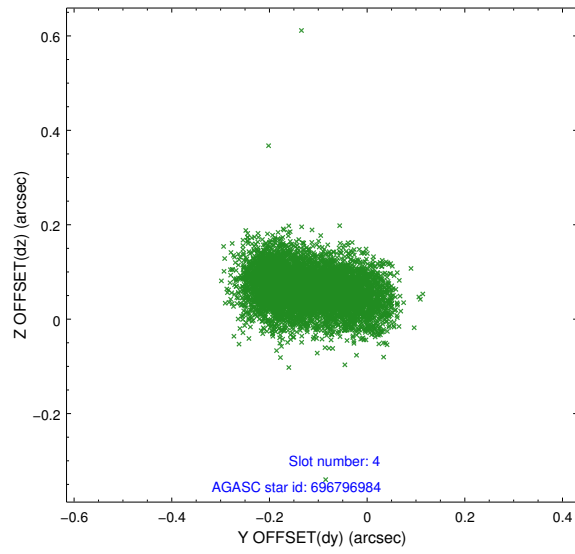
slot	status	id	mag	n_pts	med_dy	med_dz	dr1	dr2	ra	dec	mean_y	mean_z
0	FID	ACIS-I-1	7.24	2972	0.034	0.016	0.015	0.023	0.000000	0.000000	937.66	-950.96
1	FID	ACIS-I-5	7.23	2970	-0.112	0.072	0.014	0.021	0.000000	0.000000	-1810.34	946.37
2	FID	ACIS-I-6	7.25	2972	-0.014	-0.018	0.013	0.020	0.000000	0.000000	402.75	1591.23
3	GUIDE	696780448	8.58	5940	-0.137	0.102	0.063	0.101	64.697919	-11.737043	-652.38	1134.76
4	GUIDE	696796984	8.84	5942	-0.127	0.063	0.094	0.151	65.033261	-11.560434	-1267.37	2328.33
5	GUIDE	697172920	9.54	5940	0.079	-0.072	0.103	0.164	64.156225	-12.535921	2192.59	-817.51
6	GUIDE	696779032	9.31	5935	0.052	0.035	0.093	0.152	64.983177	-12.216719	1092.41	2108.80
7	GUIDE	696783384	9.59	5939	0.129	-0.129	0.101	0.160	64.131388	-12.438811	1842.17	-899.64

2.4 Star Slots

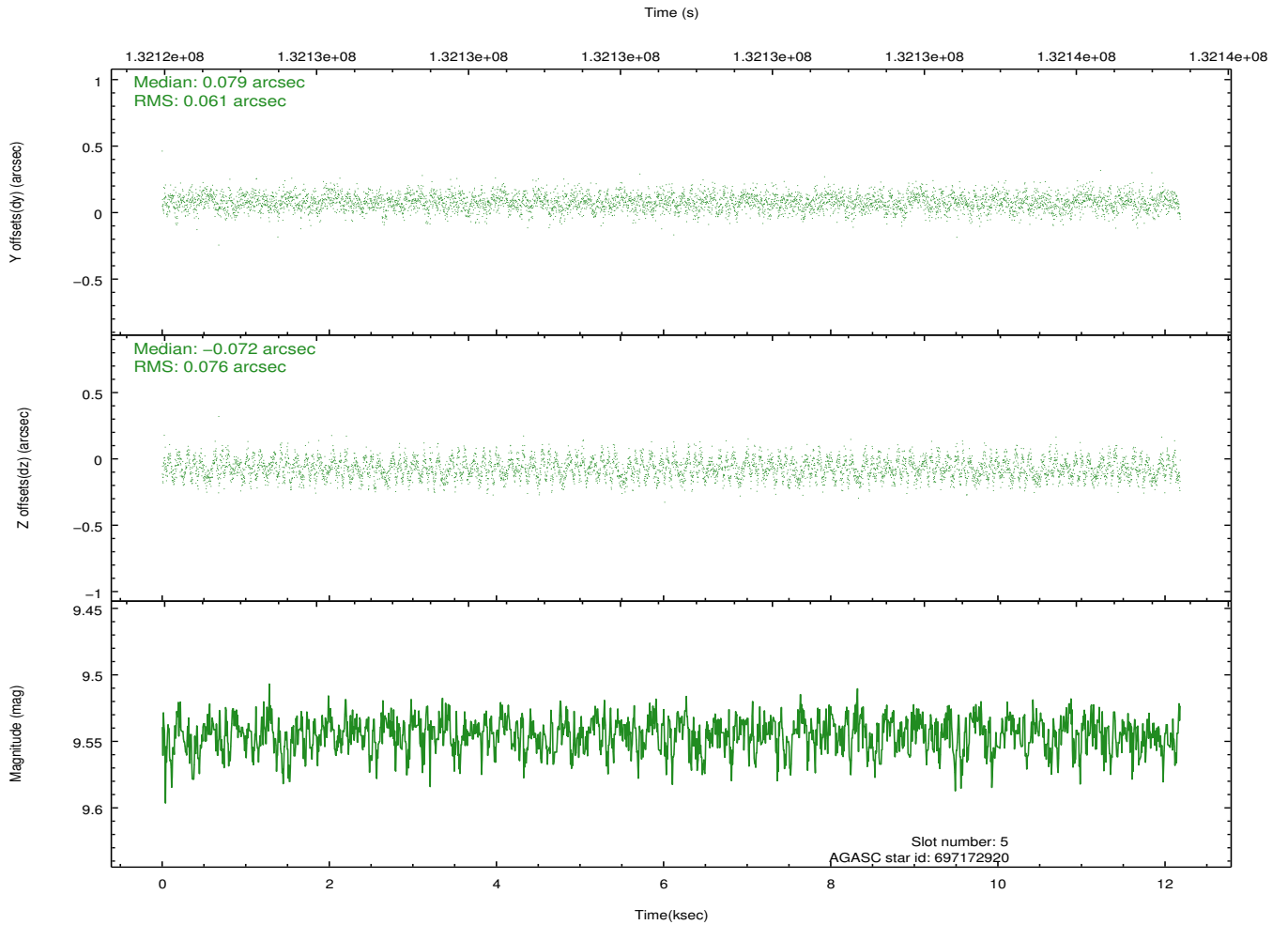
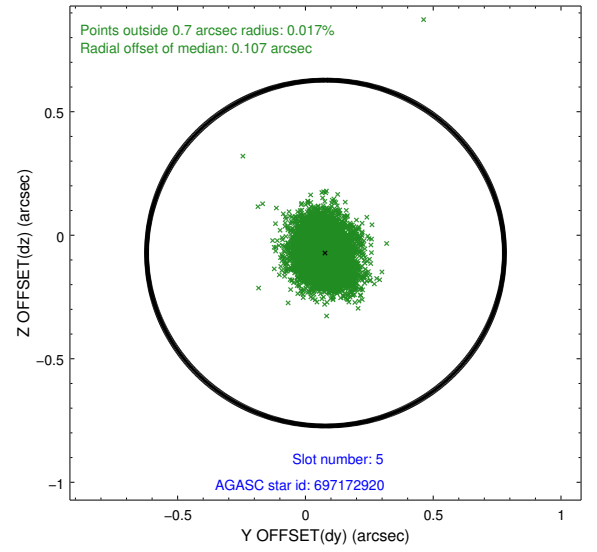
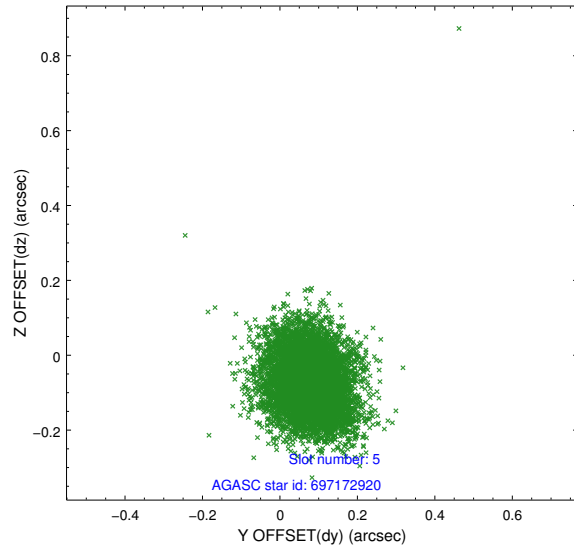
2.4.1 Slot 3



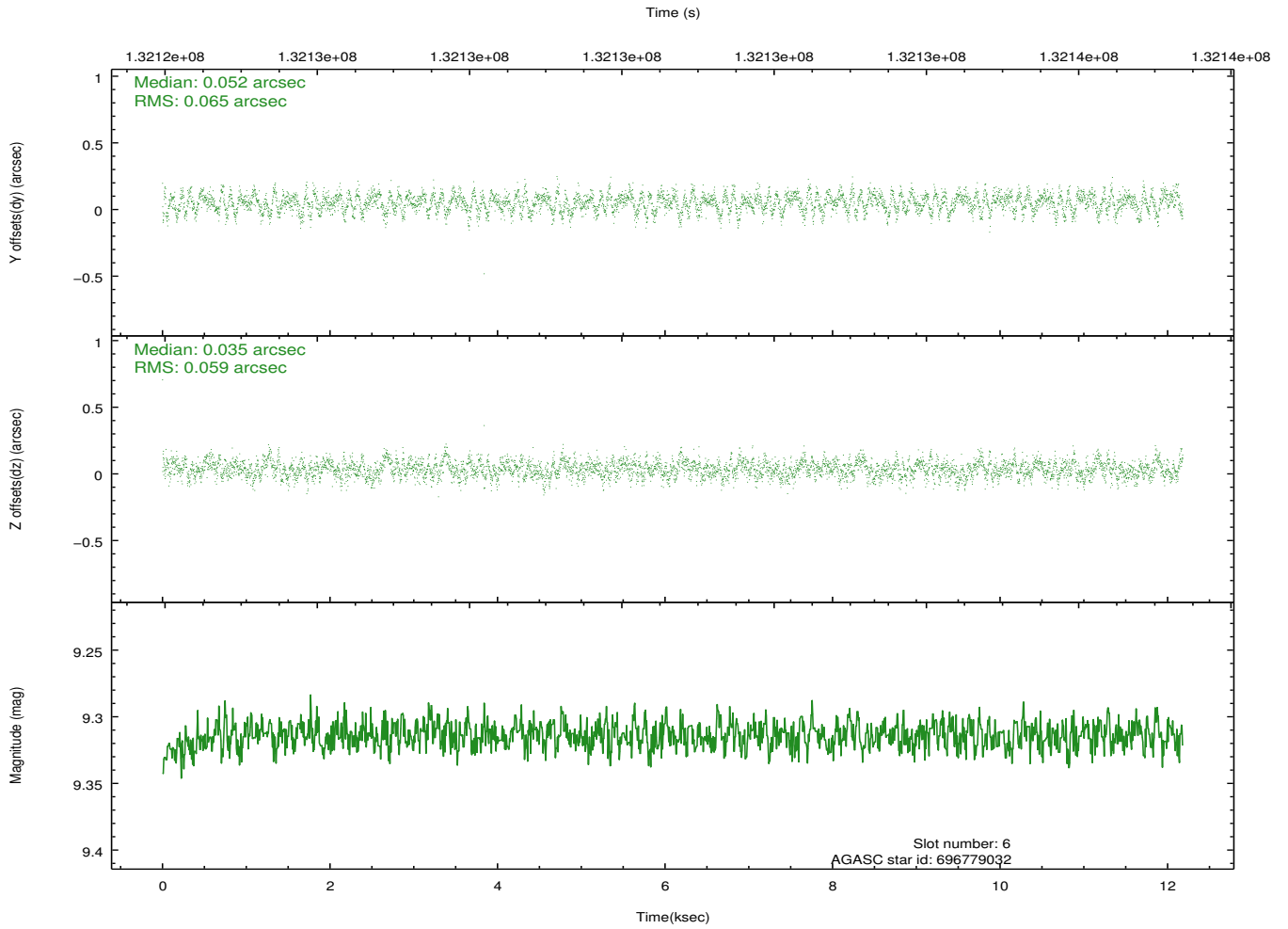
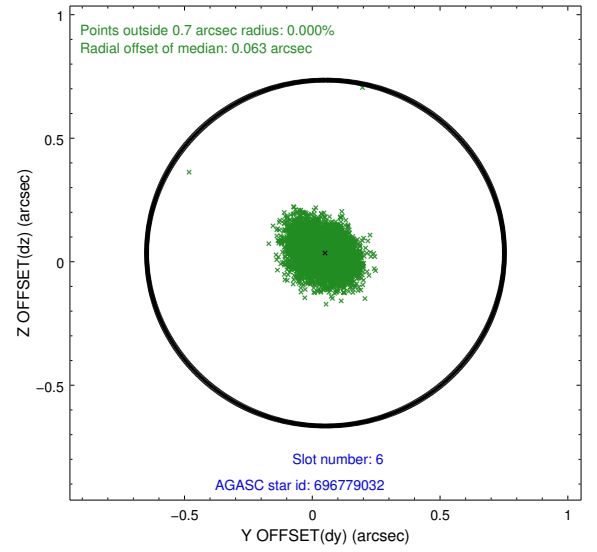
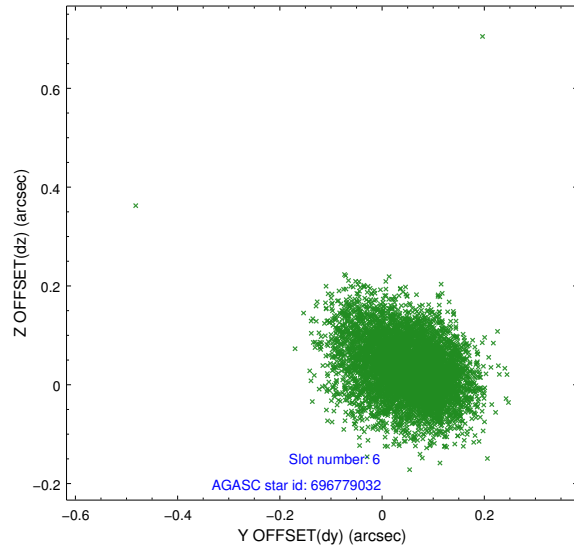
2.4.2 Slot 4



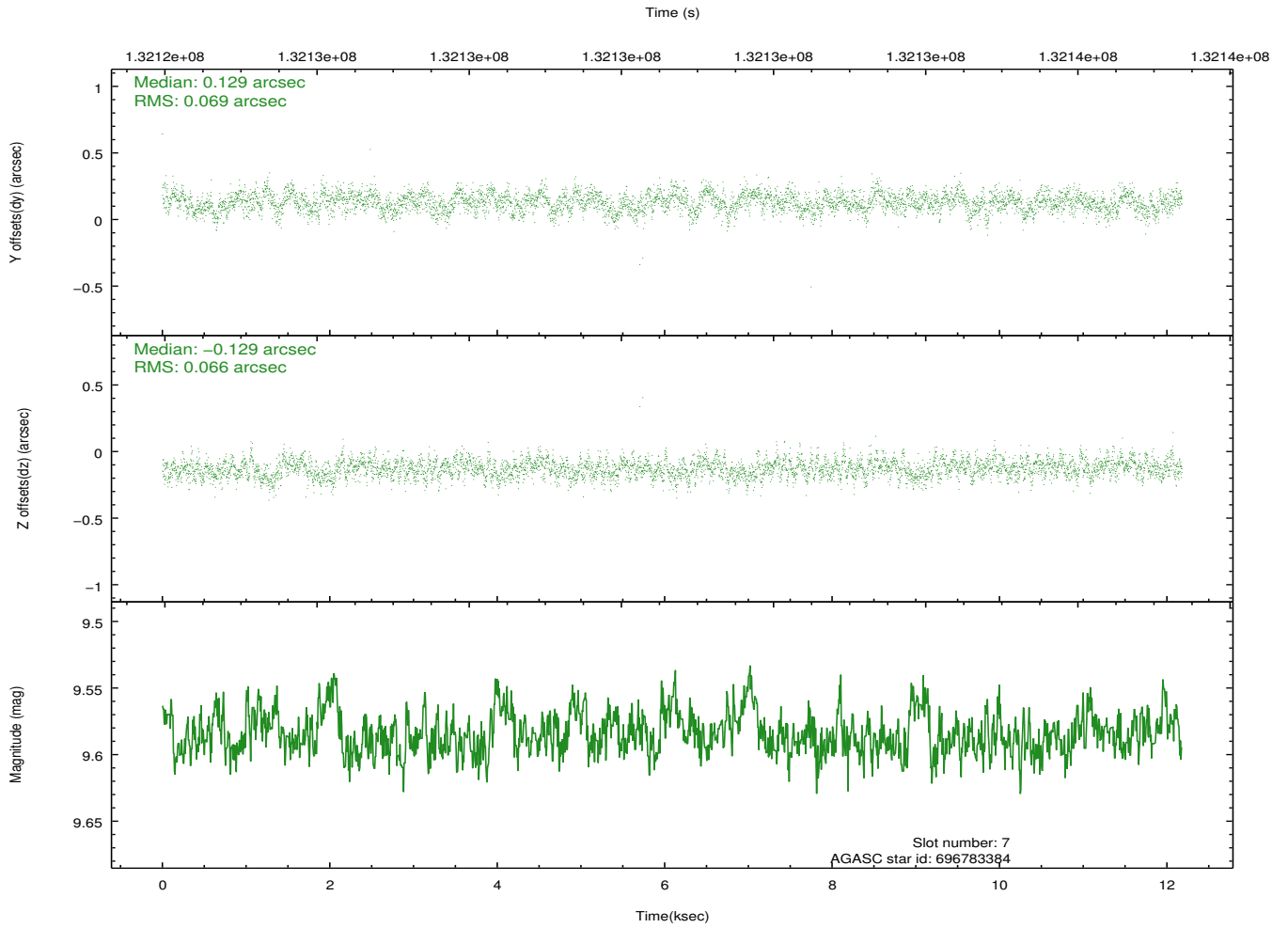
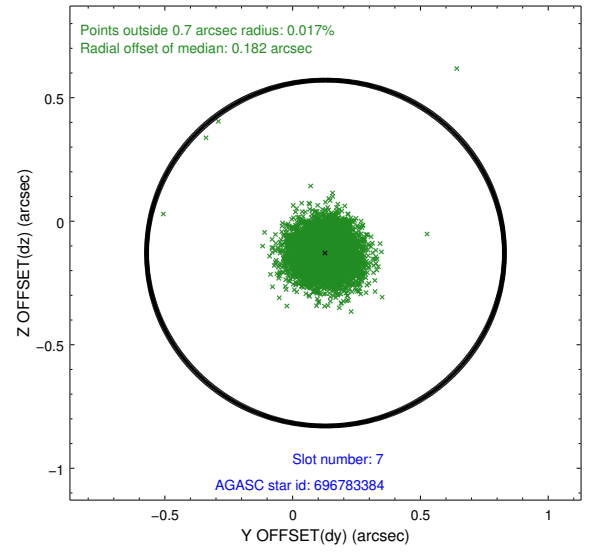
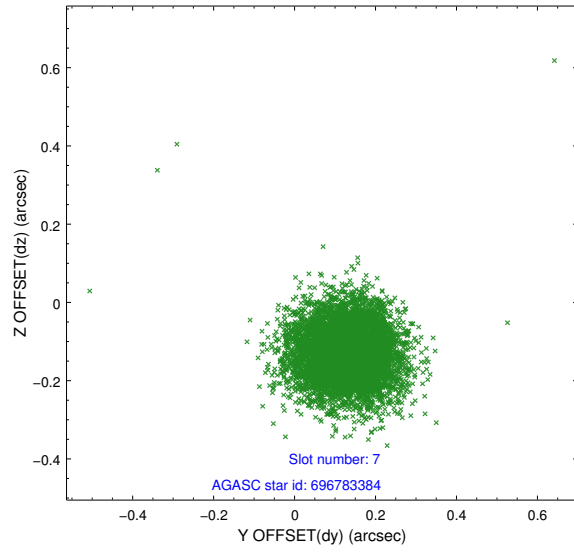
2.4.3 Slot 5



2.4.4 Slot 6

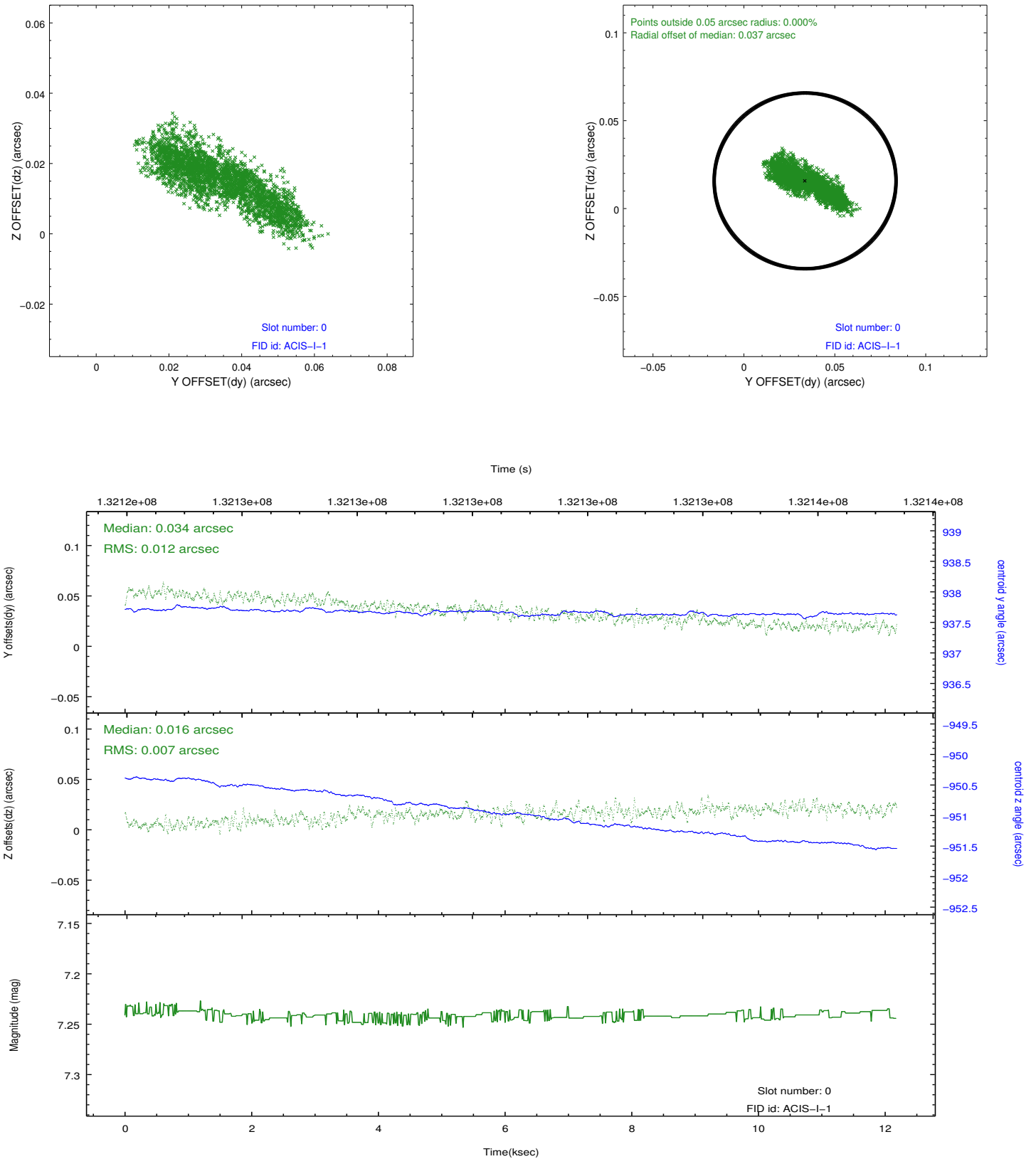


2.4.5 Slot 7

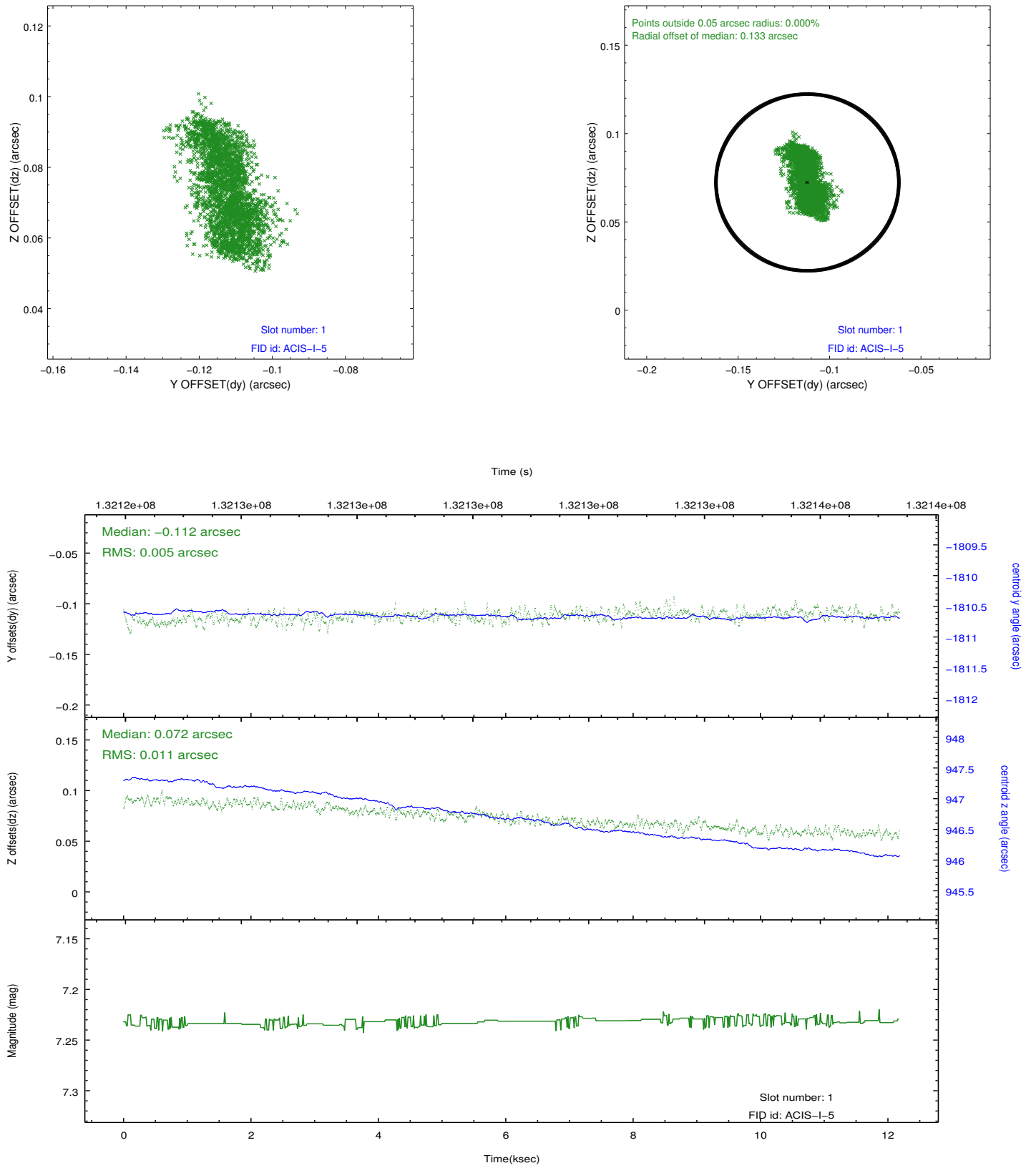


2.5 FID Slots

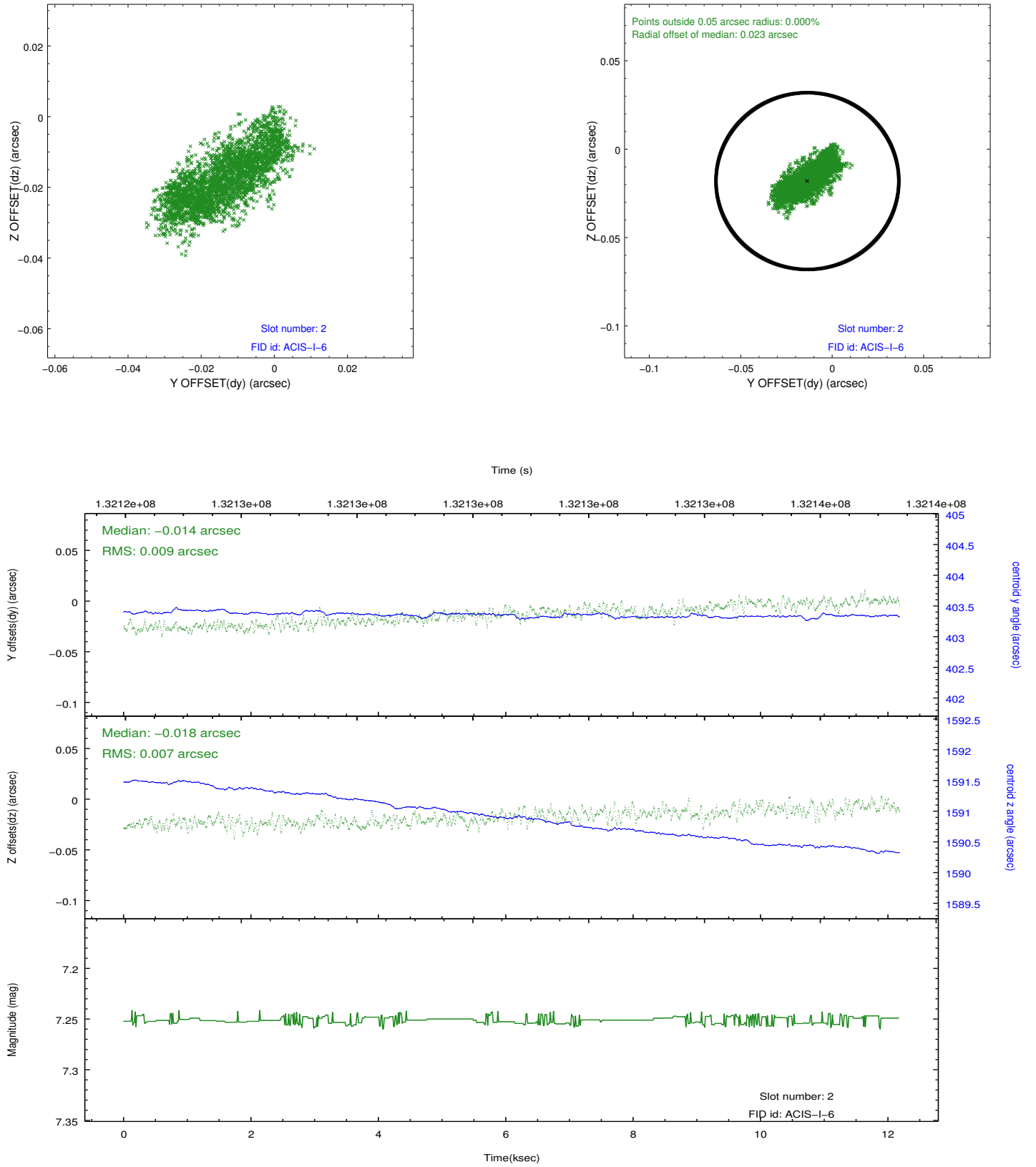
2.5.1 Slot 0



2.5.2 Slot 1



2.5.3 Slot 2



A Summary

A.1 Status

V&V Scientist	Jen Lauer
V&V Date (YYYY-MM-DD)	2012.10.04
V&V Edition	1
V&V Disposition and Status	OK
V&V Charge Time	12.173

A.2 Comments