

V&V Reference Report

L2 ASCDS Version : 7.6.9

Observation 3250 - L2 Version 001
Chandra X-Ray Center

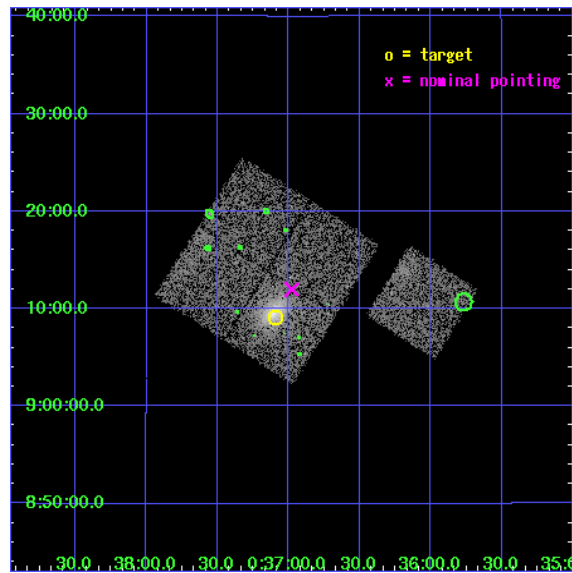
L2 Processing Date : Oct 2 2006

Contents

1	Front	2
2	OBI	3
2.1	OBI	3
2.1.1	Images	3
2.1.2	Bias	3
2.1.3	Parameters	4
2.1.4	Events	4
2.2	Compared Parameters	5
2.3	Aspect	6
2.4	Star Slots	9
2.4.1	Slot 3	9
2.4.2	Slot 4	10
2.4.3	Slot 5	11
2.4.4	Slot 6	12
2.4.5	Slot 7	13
2.5	FID Slots	14
2.5.1	Slot 0	14
2.5.2	Slot 1	15
2.5.3	Slot 2	16
3	Point Sources	17
A	Summary	18
A.1	Status	18
A.2	Comments	18

1 Front

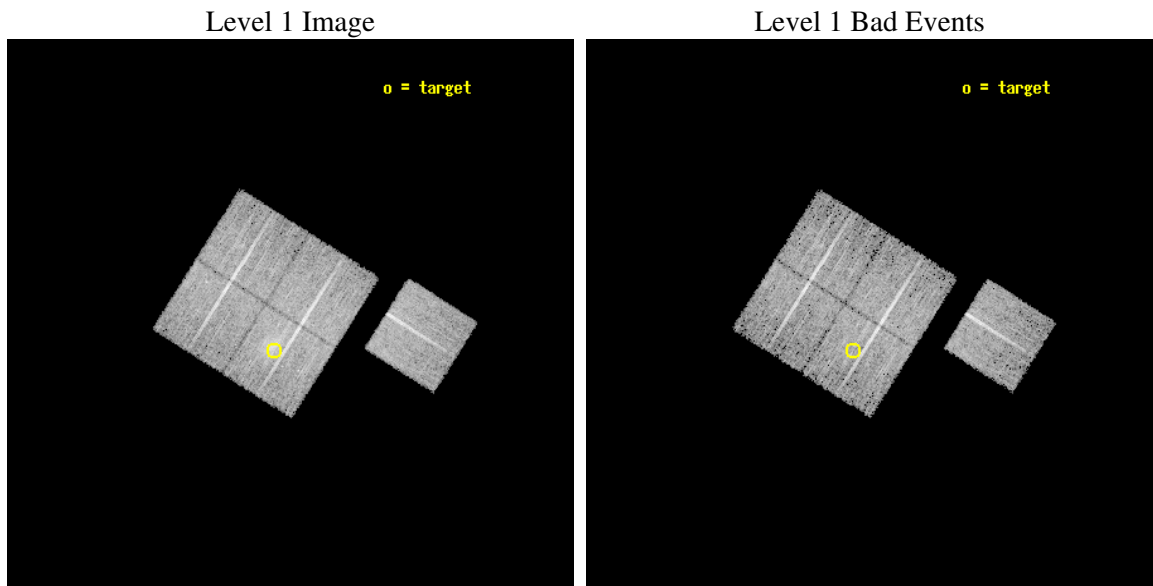
seq_num	800250
obs_id	3250
title	OBSERVATION OF BCS CLUSTERS, FIRST SET
observer	DR. LEON VANSPEYBROECK
object	A68
dtcycle	0
cycle	P
ra_targ	9.272083
dec_targ	9.152778
ra_nom	9.244379695363
dec_nom	9.1997630877372
roll_nom	122.29449812773
revision	2
ontime	10118.399980545
livedtime	9986.1956357415
ontime0	10118.399980545
ontime1	10115.258980393
ontime2	10118.399980545
ontime3	10118.399980545
ontime6	10118.399980545
l2events	29286



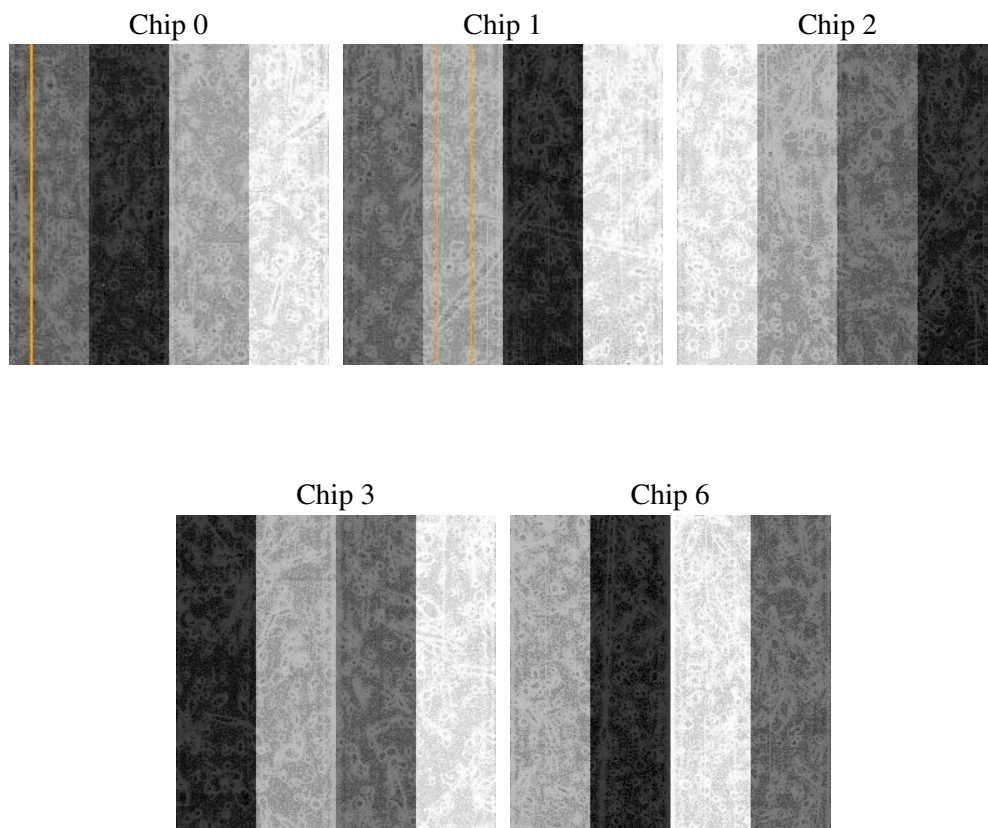
2 OBI

2.1 OBI

2.1.1 Images



2.1.2 Bias



2.1.3 Parameters

obi_num	0
ascdsver	7.6.9
caldbver	3.2.3
date	2006-10-02T22:09:47
revision	2

sched_exp_time	10000.000000
ontime	10123.460408241
ontime0	10123.460408241
ontime1	10120.319408089
ontime2	10123.460408241
ontime3	10123.460408241
ontime6	10123.460408241
l1events	280710

2.1.4 Events

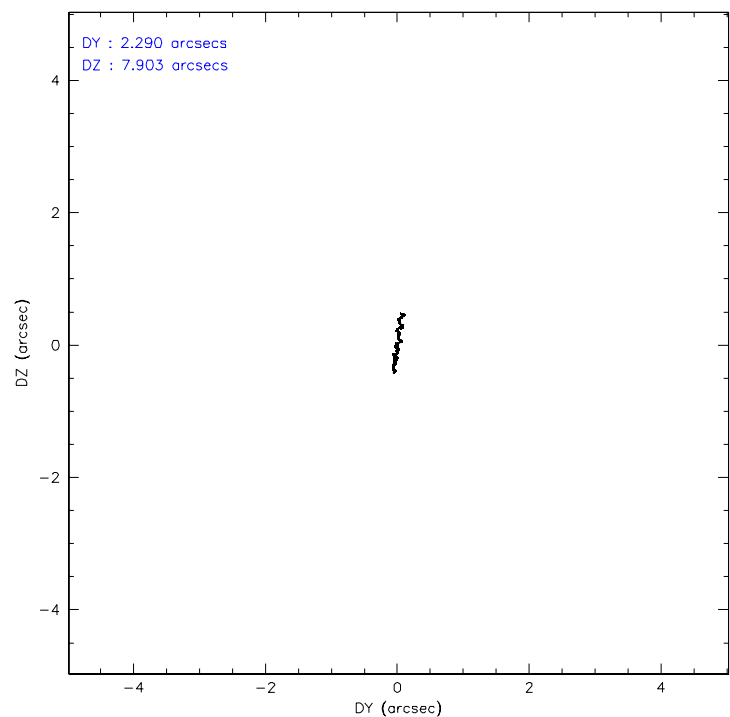
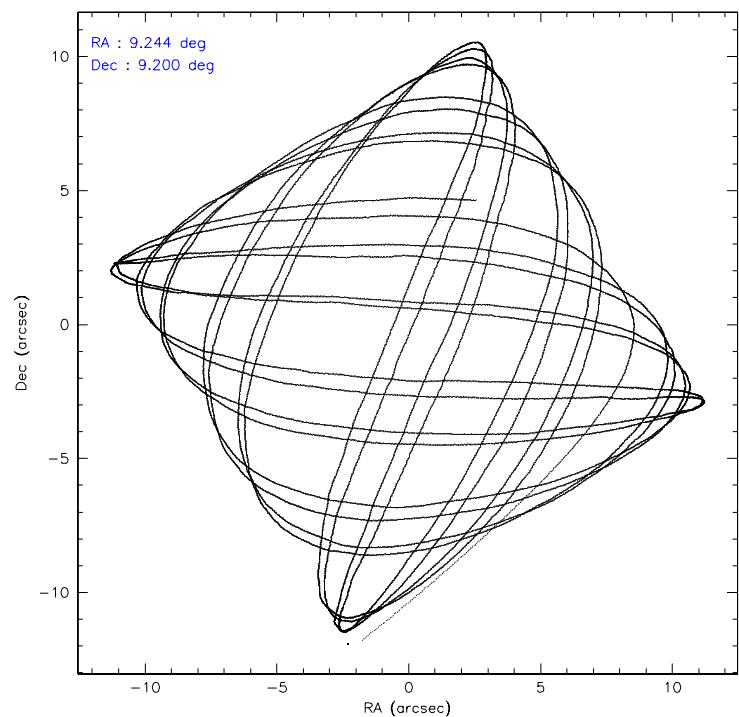
	ccd 0	ccd 1	ccd 2	ccd 3	ccd 6
level 1 events	52482	52099	58854	61562	55713
rejected events	46709	45680	52837	50829	49609
rejected %	89%	87%	89%	82%	89%

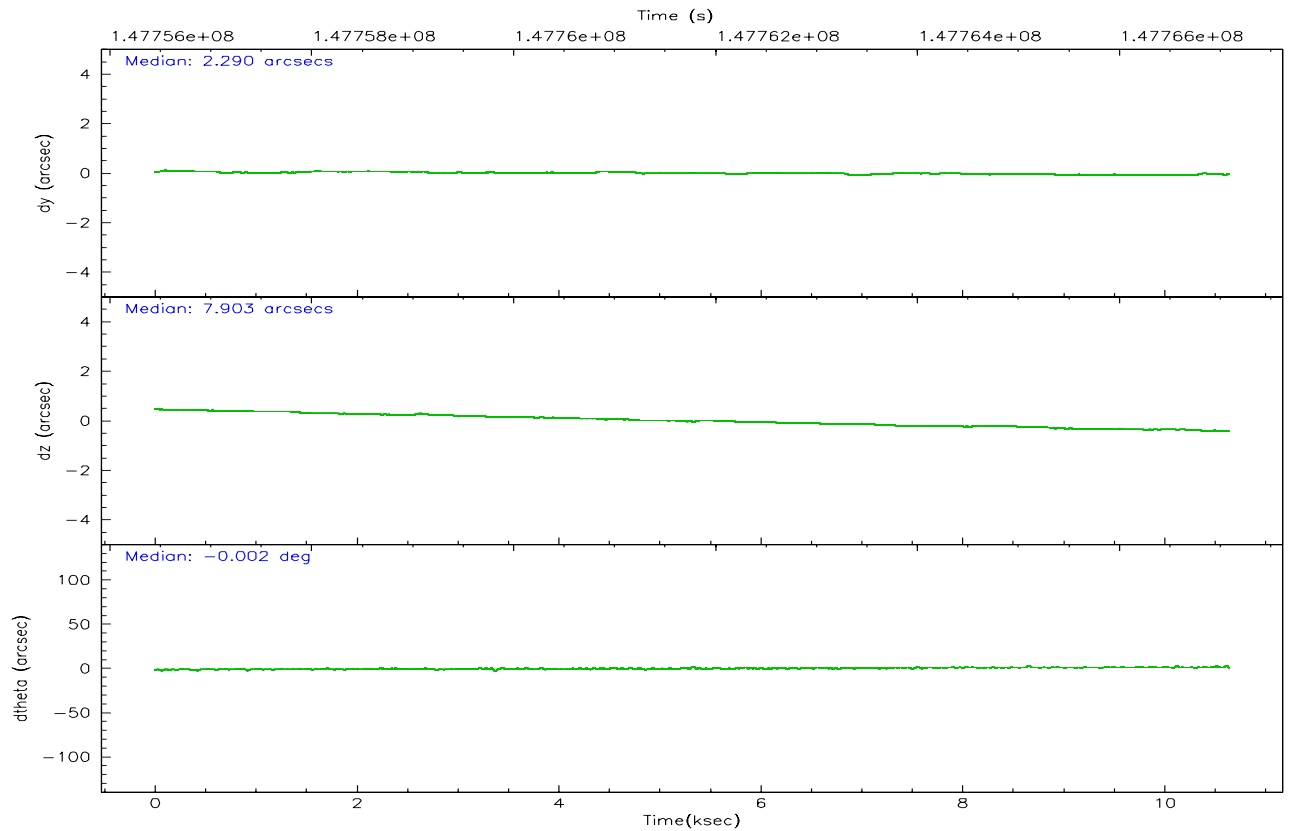
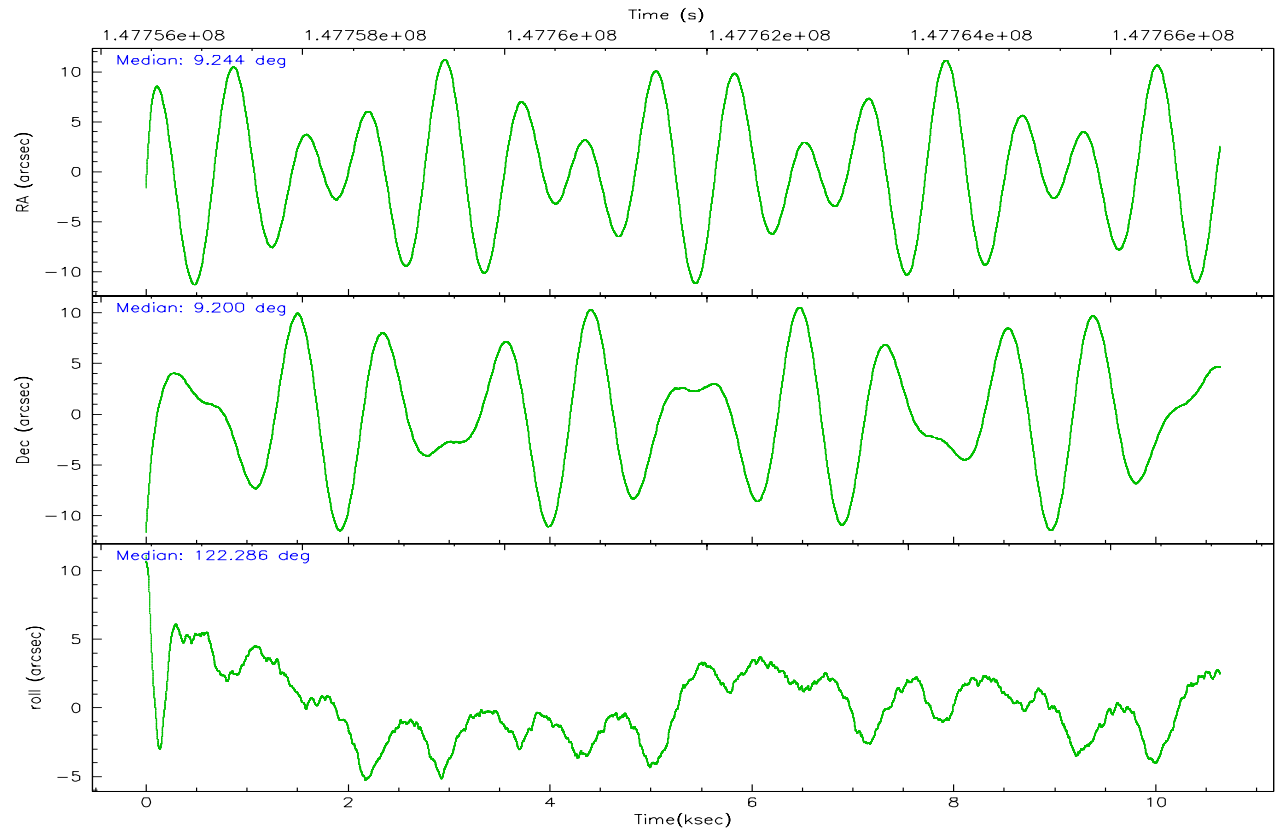
	ccd 0	ccd 1	ccd 2	ccd 3	ccd 6
grade 0 events	2078	2509	2303	6461	2355
	3%	4%	3%	10%	4%
grade 1 events	28	26	21	62	34
	0%	0%	0%	0%	0%
grade 2 events	1456	1384	1437	1672	1362
	2%	2%	2%	2%	2%
grade 3 events	657	654	612	755	643
	1%	1%	1%	1%	1%
grade 4 events	582	631	647	759	601
	1%	1%	1%	1%	1%
grade 5 events	1744	1910	1795	1957	2060
	3%	3%	3%	3%	3%
grade 6 events	1001	1246	1020	1091	1146
	1%	2%	1%	1%	2%
grade 7 events	44936	43739	51019	48805	47512
	85%	83%	86%	79%	85%

2.2 Compared Parameters

Parameter	Planned	Actual	Parameter	Planned	Actual
Instrument	ACIS	ACIS	Obspar format version number	6	6
Detector	ACIS-01236	ACIS-01236	Obspar file type	PREDICTED	ACTUAL
Grating	NONE	NONE	Obspar update status	NONE	UPDATED
Data mode	VFAINT	VFAINT	Number of optional ACIS chips dropped	0	0
Observation mode	POINTING	POINTING	On-chip summing requested	N	N
Pointing RA	9.269033	9.244379695362996	Subarray requested	NONE	NONE
Pointing Dec	9.187088	9.199763087737185	Alternating exposures requested	N	N
Pointing Roll	122.081860	122.2944981277337	Primary exposure time	0.000000	3.1
SIM focus pos (mm)	-0.782348	-0.7809083437167272			
SIM defocus (mm)	0	0.001439871863259334			
SIM translation stage pos (mm)	-225.840463	-225.8458576473255			
SIM translation stage offset (mm)	-7.752	-7.746595355604228			
Observation start time	147757087.184000	147755901.73874			
Observation start date	2002-09-07T03:37:03	2002-09-07T03:18:21			
Observation end time	147767087.184000	147767739.97673			
Observation end date	2002-09-07T06:23:43	2002-09-07T06:35:39			
Read mode	TIMED	TIMED			

2.3 Aspect



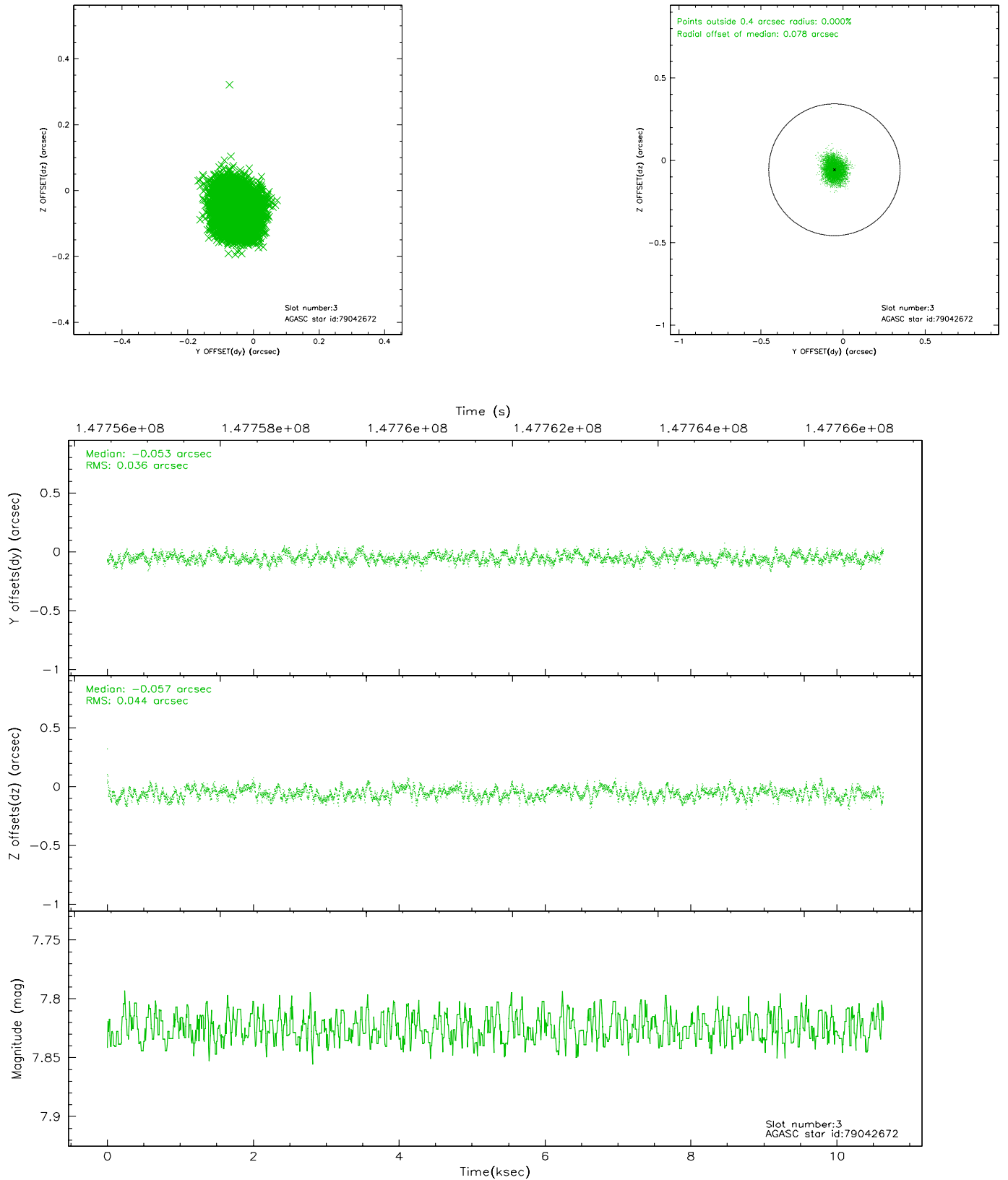


Slot Statistics

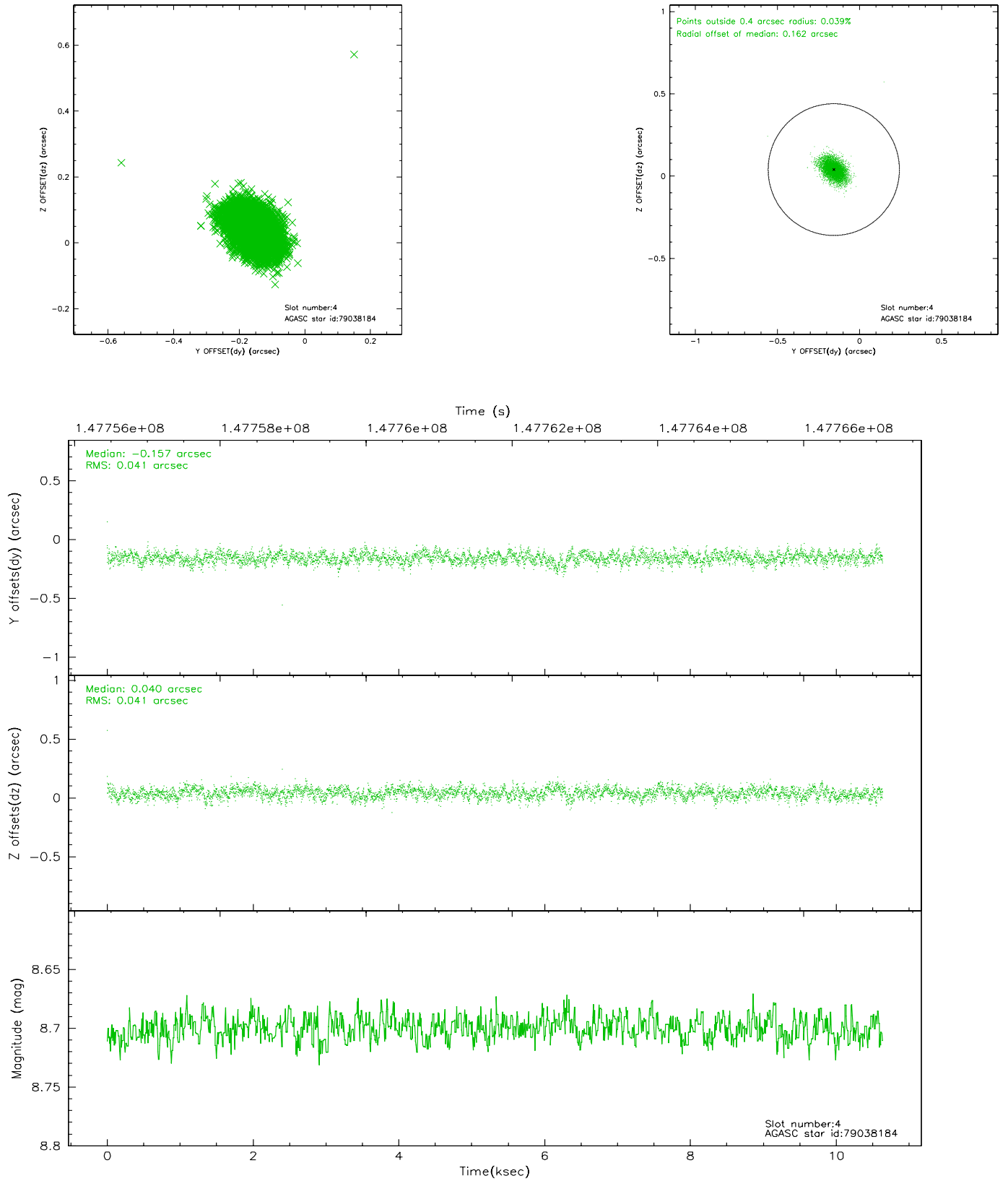
slot	status	id	mag	n_pts	med_dy	med_dz	dr1	dr2	ra	dec	mean_y	mean_z
0	FID	ACIS-I-1	7.23	2596	0.047	-0.005	0.014	0.021	0.000000	0.000000	937.41	-990.37
1	FID	ACIS-I-5	7.22	2596	-0.112	0.083	0.010	0.015	0.000000	0.000000	-1810.56	906.92
2	FID	ACIS-I-6	7.26	2596	-0.027	-0.007	0.010	0.015	0.000000	0.000000	402.38	1551.88
3	GUIDE	79042672	7.83	5186	-0.053	-0.057	0.061	0.096	9.101279	8.874127	-638.25	1104.18
4	GUIDE	79038184	8.70	5189	-0.157	0.040	0.061	0.102	9.407660	9.641439	1124.11	-1284.84
5	GUIDE	79038808	9.14	5190	0.027	-0.131	0.080	0.134	9.345153	9.001715	-709.57	125.01
6	GUIDE	79039168	9.45	5187	0.013	0.151	0.093	0.150	9.837457	9.144543	-1201.83	-1630.89
7	GUIDE	79039376	9.38	5180	0.170	0.003	0.091	0.154	9.524640	9.201968	-437.25	-798.20

2.4 Star Slots

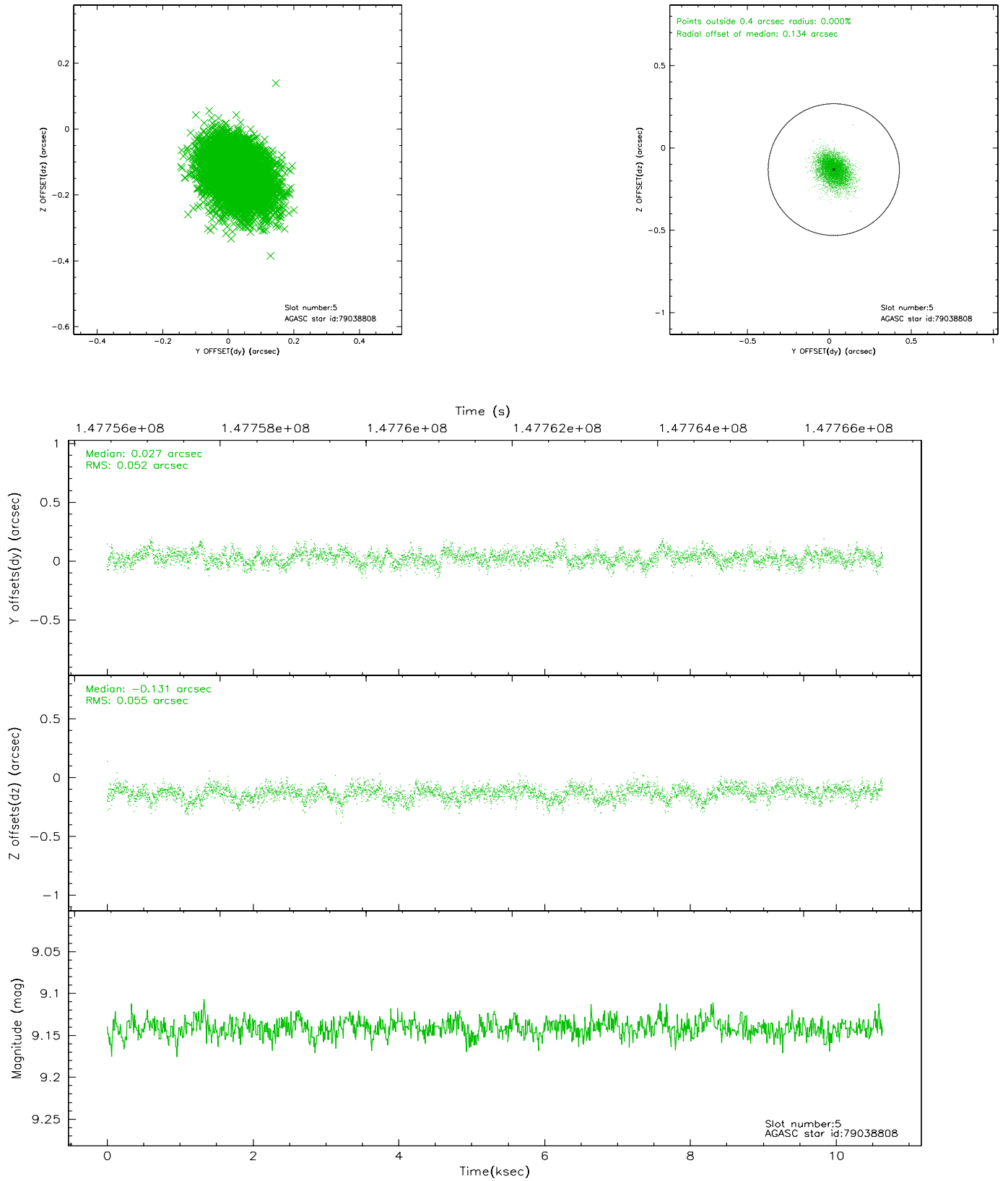
2.4.1 Slot 3



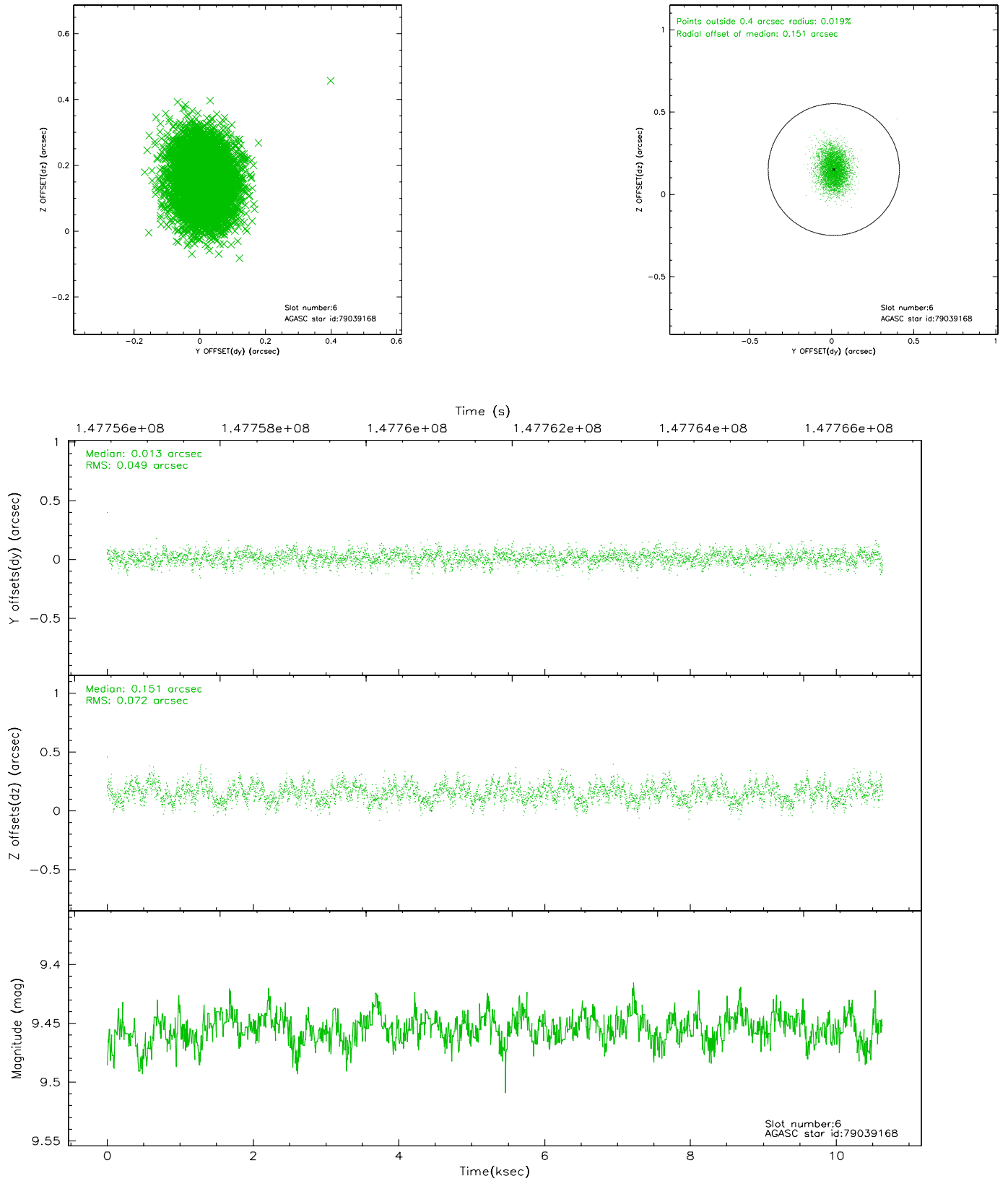
2.4.2 Slot 4



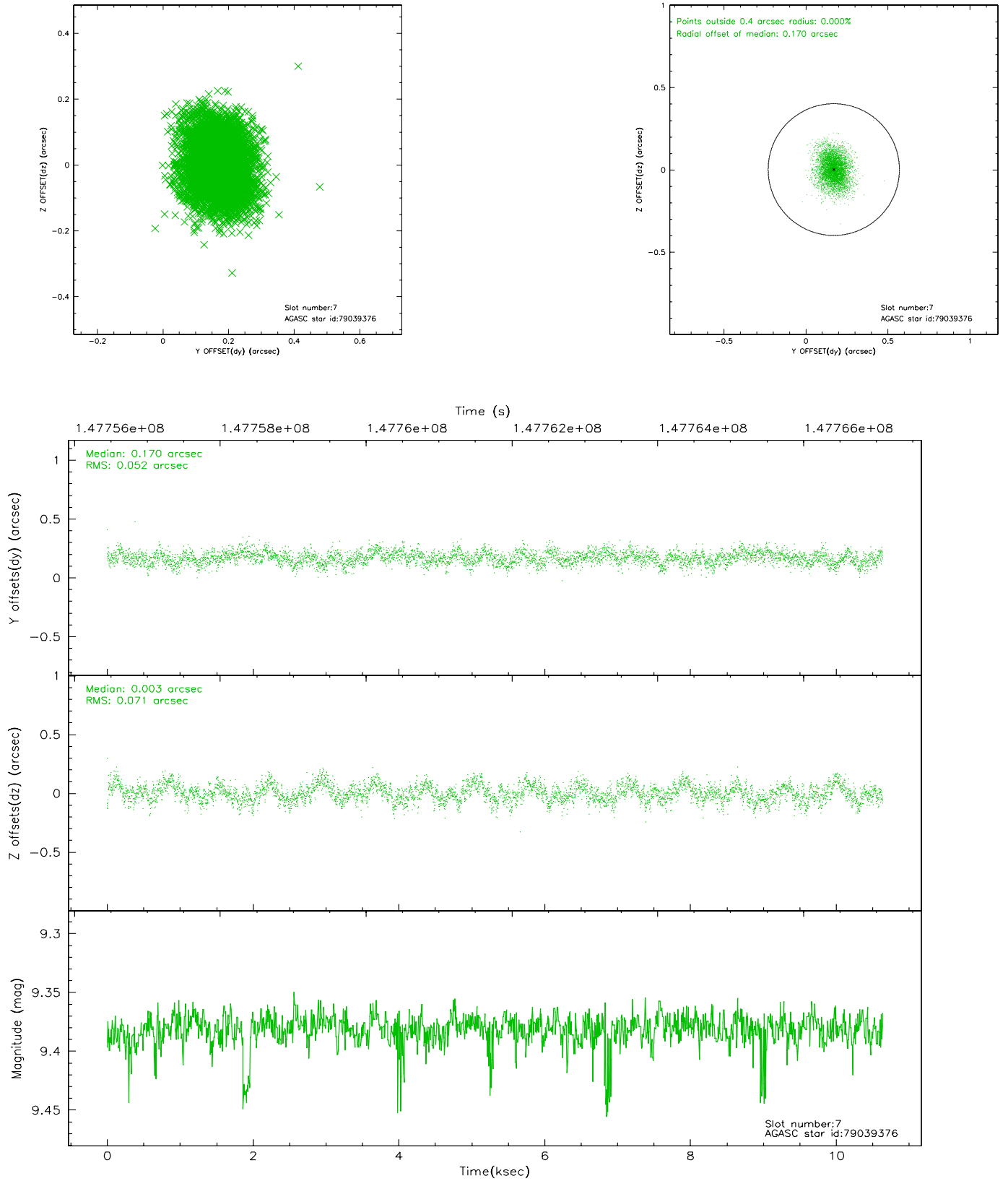
2.4.3 Slot 5



2.4.4 Slot 6

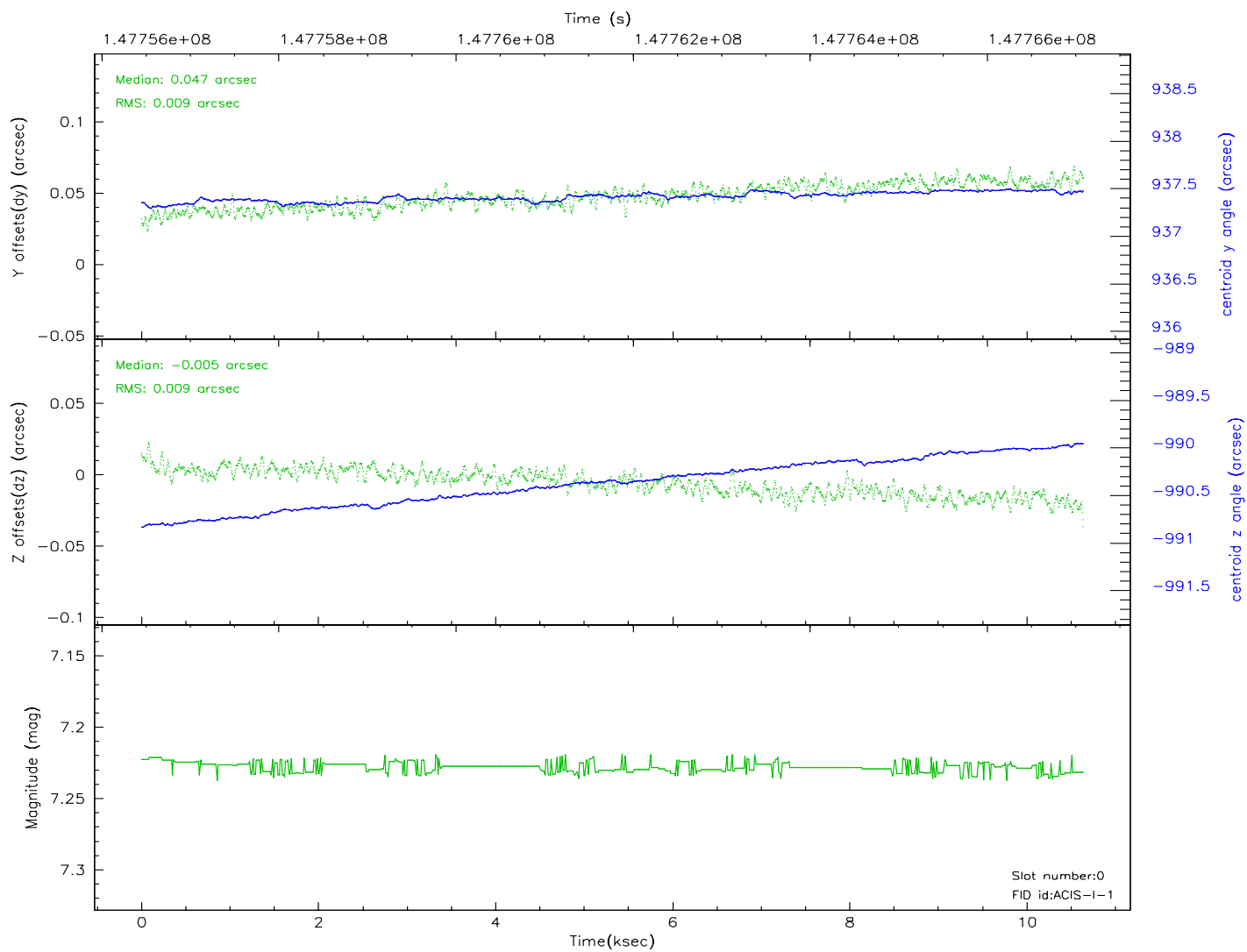
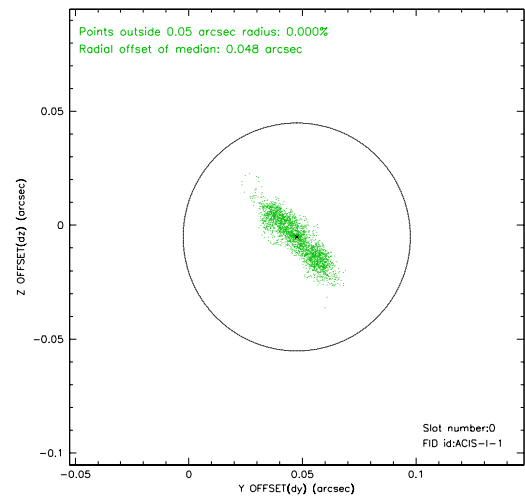
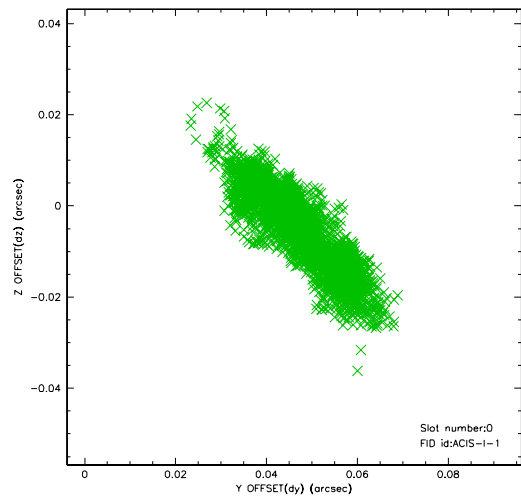


2.4.5 Slot 7

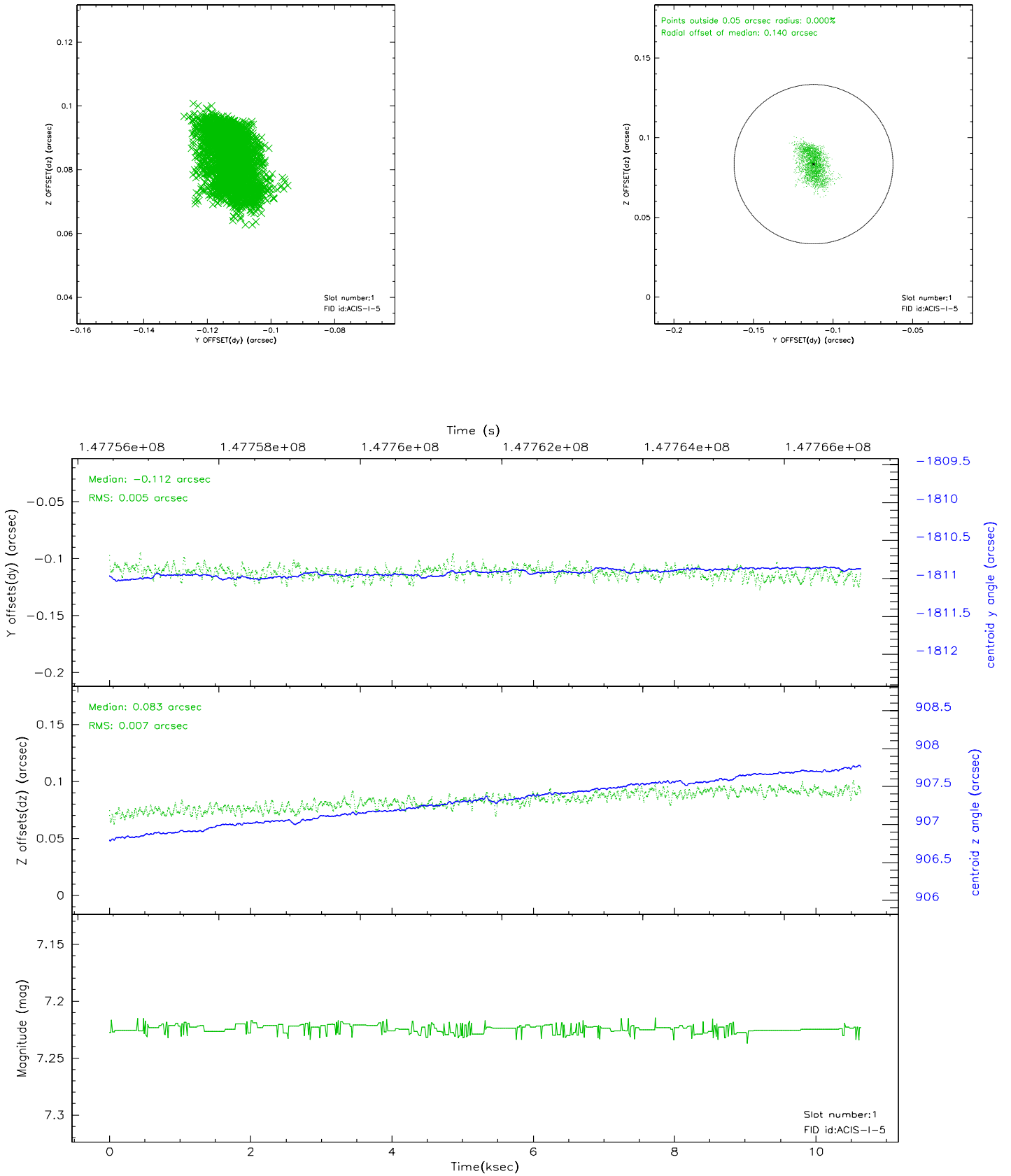


2.5 FID Slots

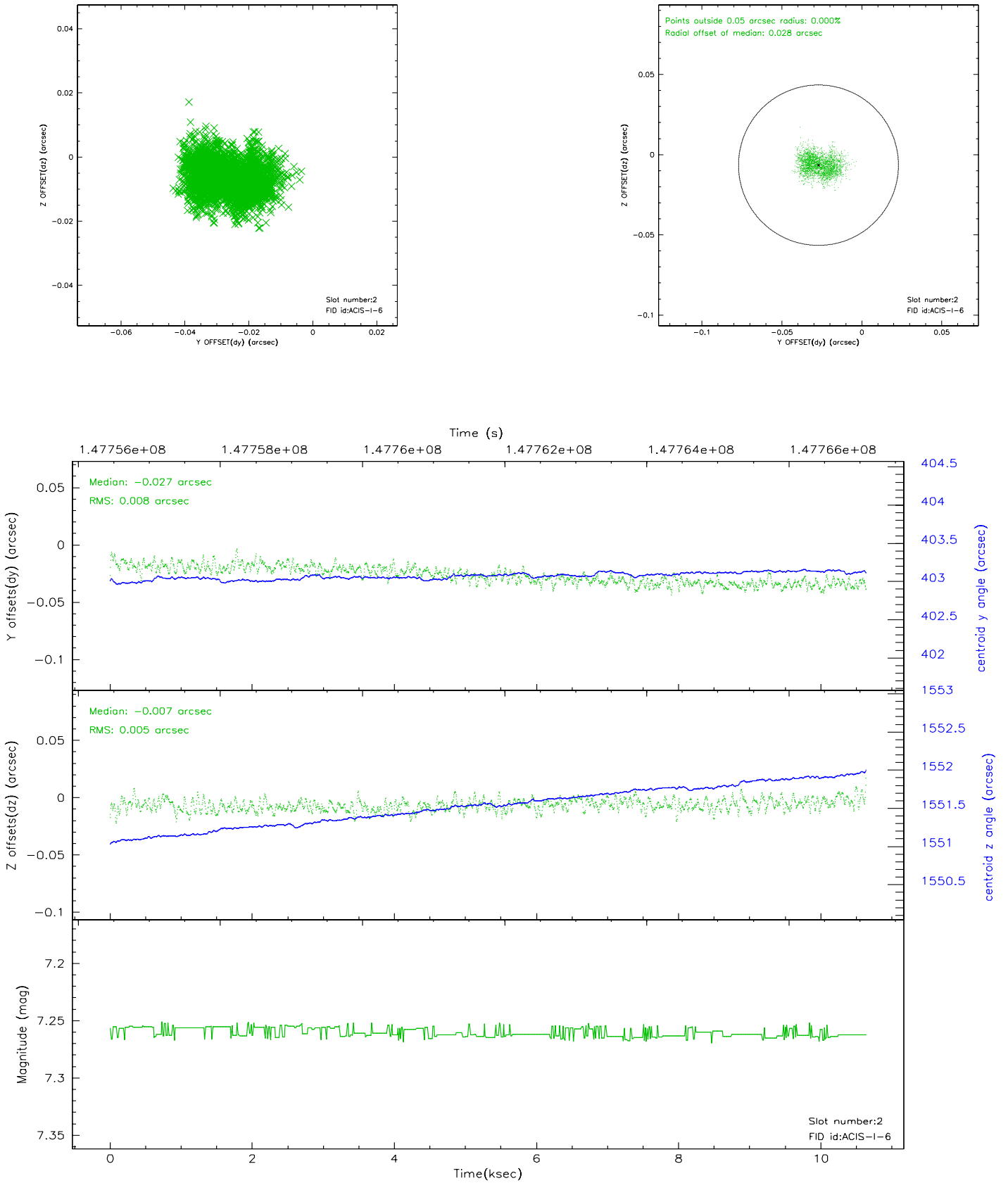
2.5.1 Slot 0



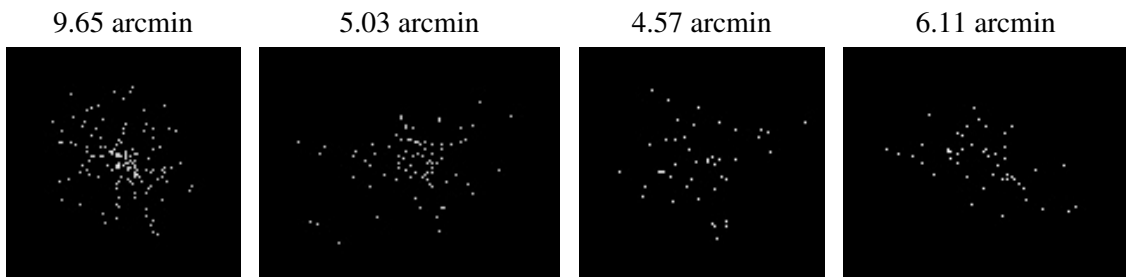
2.5.2 Slot 1



2.5.3 Slot 2



3 Point Sources



A Summary

A.1 Status

V&V Scientist	Jen Lauer
V&V Date (YYYY-MM-DD)	2006.10.03
V&V Edition	1
V&V Disposition and Status	OK
V&V Charge Time	10.121

A.2 Comments