

# V&V Reference Report

## L2 ASCDS Version : 8.4.5

Observation 3240 - L2 Version 4  
Chandra X-Ray Center

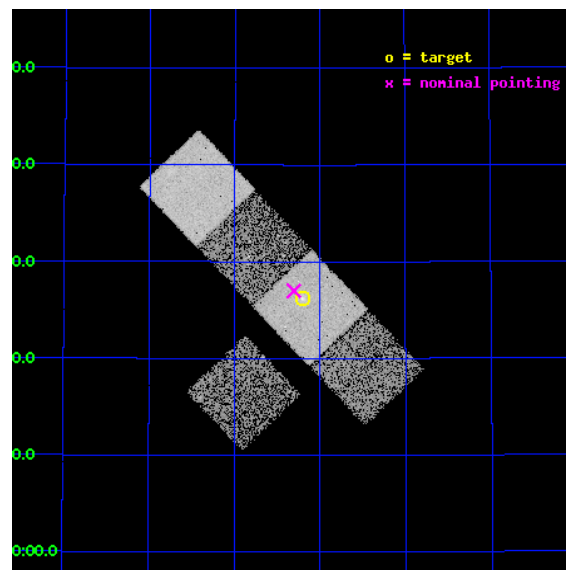
L2 Processing Date : Oct 19 2012

## Contents

<b>1</b>	<b>Front</b>	<b>2</b>
<b>2</b>	<b>OBI</b>	<b>3</b>
2.1	OBI . . . . .	3
2.1.1	Images . . . . .	3
2.1.2	Bias . . . . .	3
2.1.3	Parameters . . . . .	4
2.1.4	Events . . . . .	4
2.2	Compared Parameters . . . . .	5
2.3	Aspect . . . . .	6
2.4	Star Slots . . . . .	9
2.4.1	Slot 3 . . . . .	9
2.4.2	Slot 4 . . . . .	10
2.4.3	Slot 5 . . . . .	11
2.4.4	Slot 6 . . . . .	12
2.4.5	Slot 7 . . . . .	13
2.5	FID Slots . . . . .	14
2.5.1	Slot 0 . . . . .	14
2.5.2	Slot 1 . . . . .	15
2.5.3	Slot 2 . . . . .	16
<b>A</b>	<b>Summary</b>	<b>17</b>
A.1	Status . . . . .	17
A.2	Comments . . . . .	17

# 1 Front

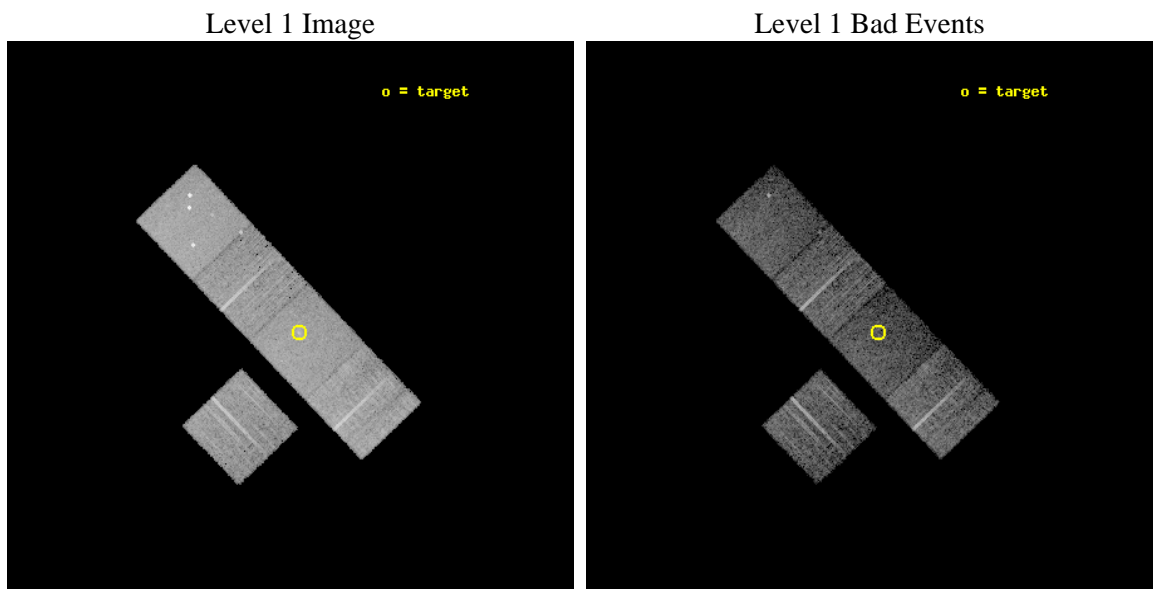
seq_num	800240	Sequence number
obs_id	3240	Observation id
title	RICH, OPTICALLY-SELECTED GALAXY CLUSTERS AT Z~1 FROM THE RCS SURVEY	&#160
observer	Dr. Erica Ellingson	Principal investigator
object	RCS1419+5326	Source name
dtcycle	0	&#160
cycle	P	events from which exps? Prim/Second/Both
ra_targ	214.800417	Observer's specified target RA [deg]
dec_targ	53.436389	Observer's specified target Dec [deg]
ra_nom	214.82638468734	Nominal RA [deg]
dec_nom	53.450144833895	Nominal Dec [deg]
roll_nom	46.260328870336	Nominal Roll [deg]
revision	4	Processing version of data
ontime	10031.599980682	Sum of GTIs [s]
livetime	9900.5297417781	Livetime [s]
ontime3	10031.599980682	Sum of GTIs [s]
ontime5	10031.599980682	Sum of GTIs [s]
ontime6	10031.599980682	Sum of GTIs [s]
ontime7	10031.599980682	Sum of GTIs [s]
ontime8	10031.599980682	Sum of GTIs [s]
l2events	71630	Number of level 2 events



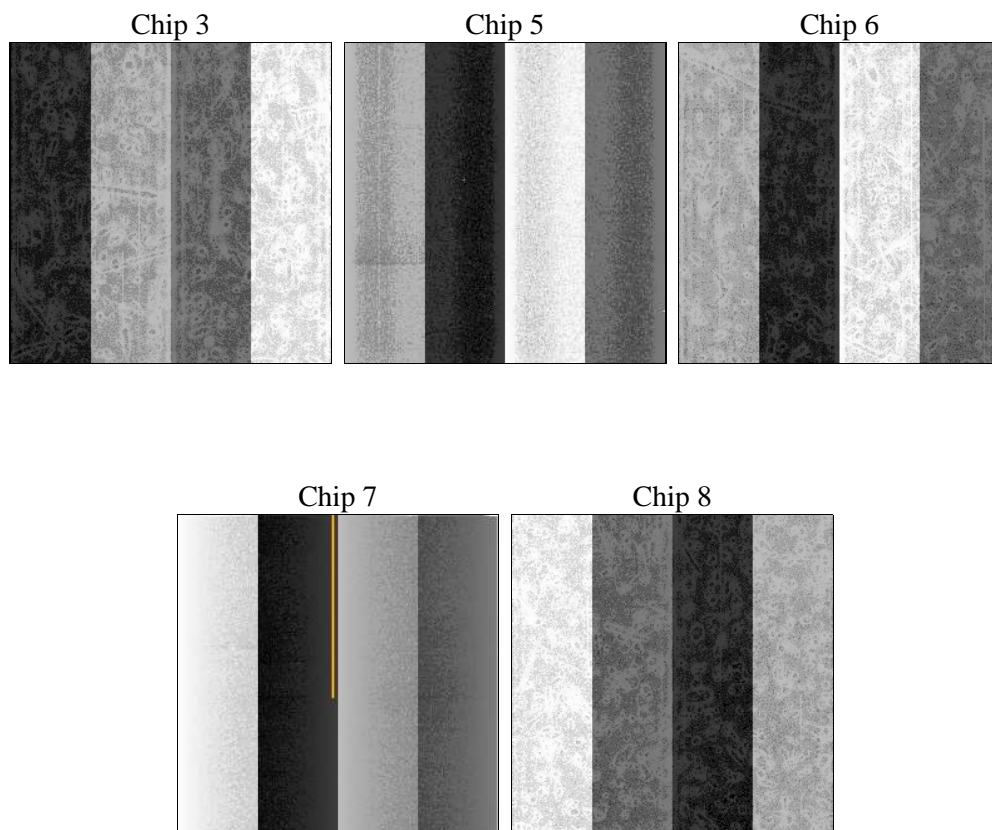
## 2 OBI

### 2.1 OBI

#### 2.1.1 Images



#### 2.1.2 Bias



### 2.1.3 Parameters

obi_num	0	Obi number	sched_exp_time	9928.000000	[s] Scheduled observation exposure time
ascdsver	8.4.5	Processing system revision	ontime	10031.599980682	Sum of GTIs [s]
caldsver	4.5.2	&#160	ontime3	10031.599980682	Sum of GTIs [s]
date	2012-10-19T06:31:45	Date and time of file creation	ontime5	10031.599980682	Sum of GTIs [s]
revision	4	Processing version of data	ontime6	10031.599980682	Sum of GTIs [s]
			ontime7	10031.599980682	Sum of GTIs [s]
			ontime8	10031.599980682	Sum of GTIs [s]
			l1events	293794	Number of level 1 events

### 2.1.4 Events

	<b>ccd 3</b>	<b>ccd 5</b>	<b>ccd 6</b>	<b>ccd 7</b>	<b>ccd 8</b>
level 1 events	49333	71441	51672	56452	64896
rejected events	44547	34516	46077	30060	50529
rejected %	90%	48%	89%	53%	77%

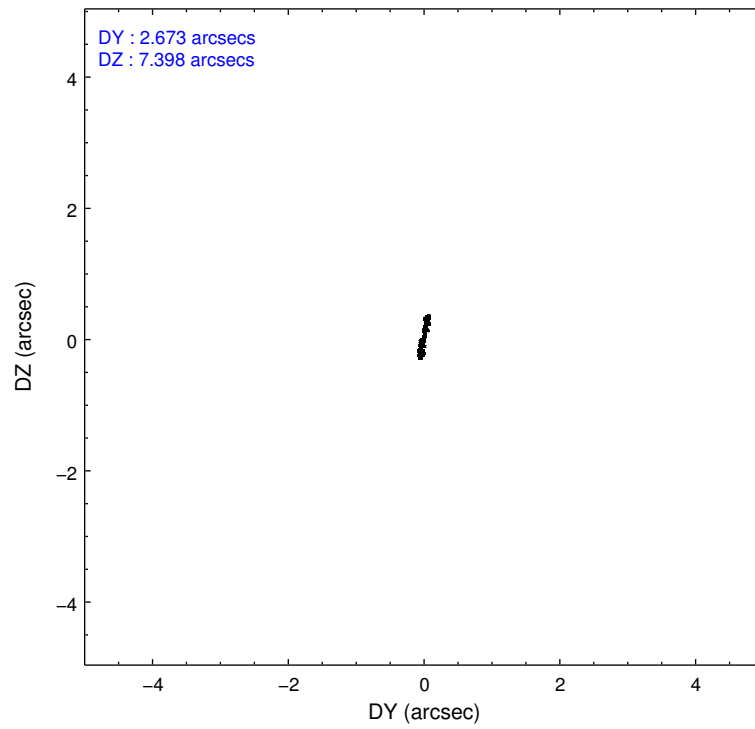
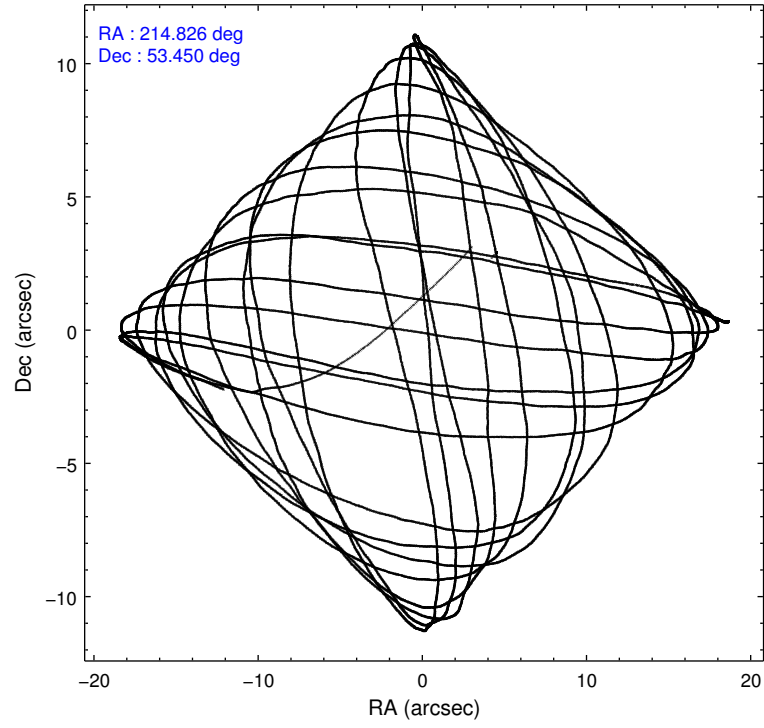
	<b>ccd 3</b>	<b>ccd 5</b>	<b>ccd 6</b>	<b>ccd 7</b>	<b>ccd 8</b>
grade 0 events	1711	6974	2142	2744	4474
	3%	9%	4%	4%	6%
grade 1 events	24	419	27	54	41
	0%	0%	0%	0%	0%
grade 2 events	996	9647	1130	5371	2977
	2%	13%	2%	9%	4%
grade 3 events	583	1695	626	2531	1674
	1%	2%	1%	4%	2%
grade 4 events	537	1540	571	2492	1635
	1%	2%	1%	4%	2%
grade 5 events	1887	5715	1943	5882	2715
	3%	7%	3%	10%	4%
grade 6 events	962	17102	1130	13275	3610
	1%	23%	2%	23%	5%
grade 7 events	42633	28349	44103	24103	47770
	86%	39%	85%	42%	73%

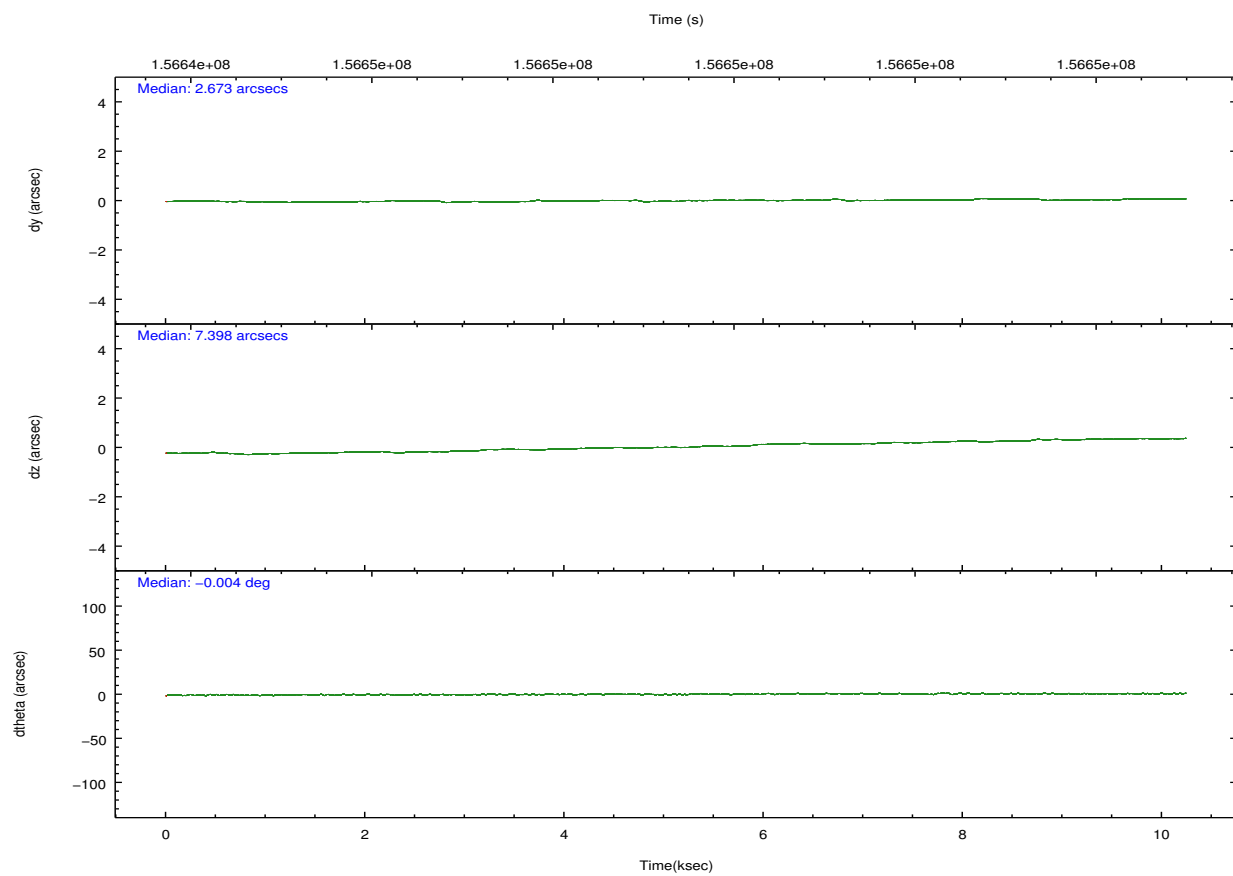
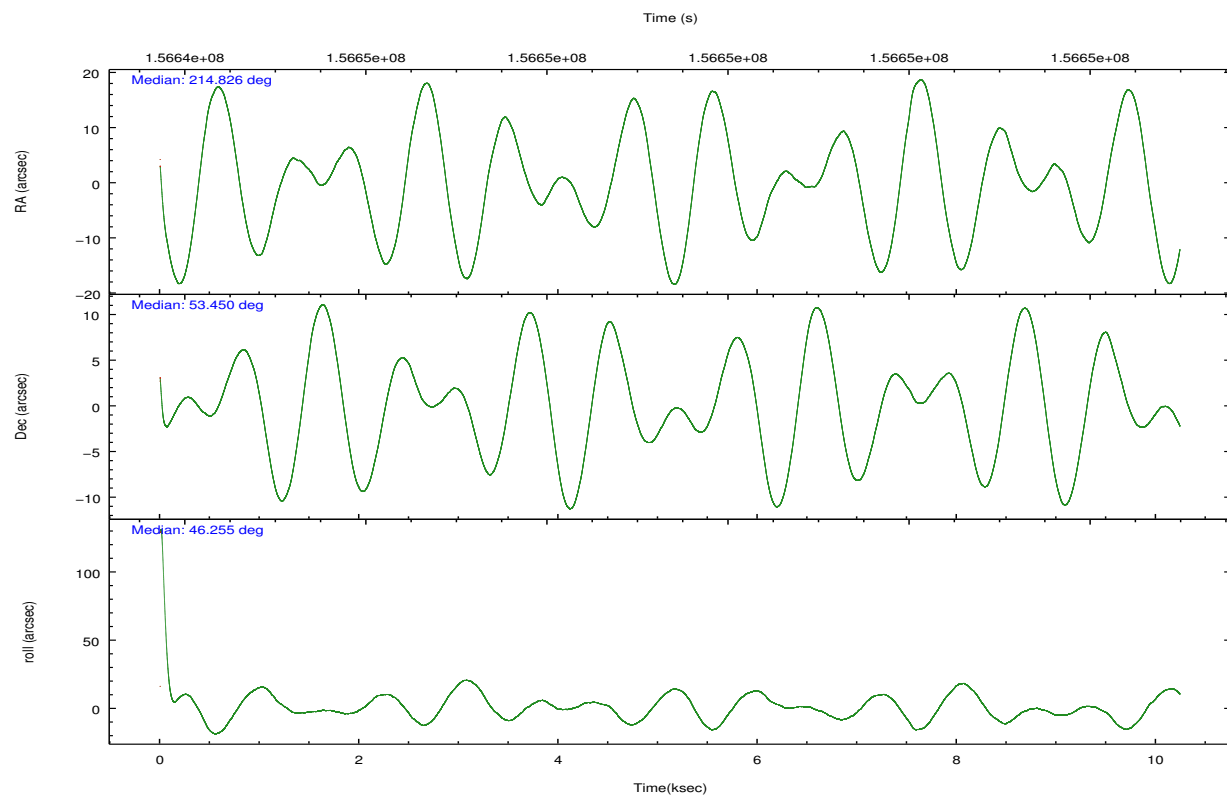


## 2.2 Compared Parameters

Parameter	Planned	Actual	Parameter	Planned	Actual
Instrument	ACIS	ACIS	Obspar format version number	7	7
Detector	ACIS-35678	ACIS-35678	Obspar file type	PREDICTED	ACTUAL
Grating	NONE	NONE	Obspar update status	NONE	UPDATED
Data mode	VFAINT	VFAINT	Number of optional ACIS chips dropped	0	0
Observation mode	POINTING	POINTING	On-chip summing requested	N	N
[deg] Pointing RA	214.816266	214.8263846873414	Subarray requested	NONE	NONE
[deg] Pointing Dec	53.423612	53.45014483389524	Alternating exposures requested	N	N
[deg] Pointing Roll	46.111640	46.26032887033599	[s] Primary exposure time	0.000000	3.1
[mm] SIM focus pos	-0.684267	-0.6828225247311905			
[mm] SIM defocus	0	0.001444936568705701			
[mm] SIM translation stage pos	-190.132523	-190.1400660498719			
[mm] SIM translation stage offset	0	0.00754346686406393			
[s] Observation start time (MET)	156644558.184000	156643489.02037			
Observation start date	2002-12-19T00:21:34	2002-12-19T00:04:49			
[s] Observation end time (MET)	156654486.184000	156655122.77086			
Observation end date	2002-12-19T03:07:02	2002-12-19T03:18:42			
Read mode	TIMED	TIMED			

## 2.3 Aspect



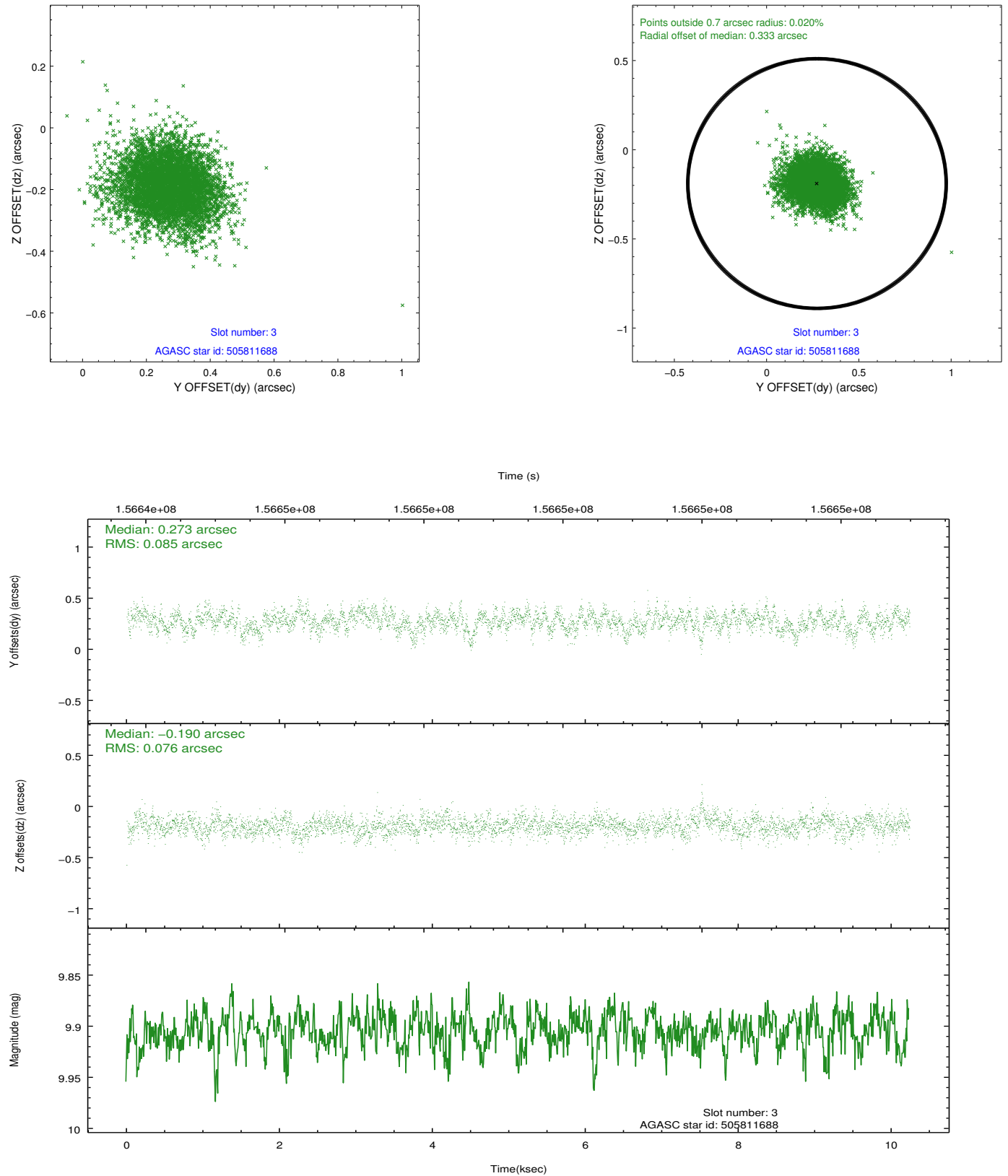


### Slot Statistics

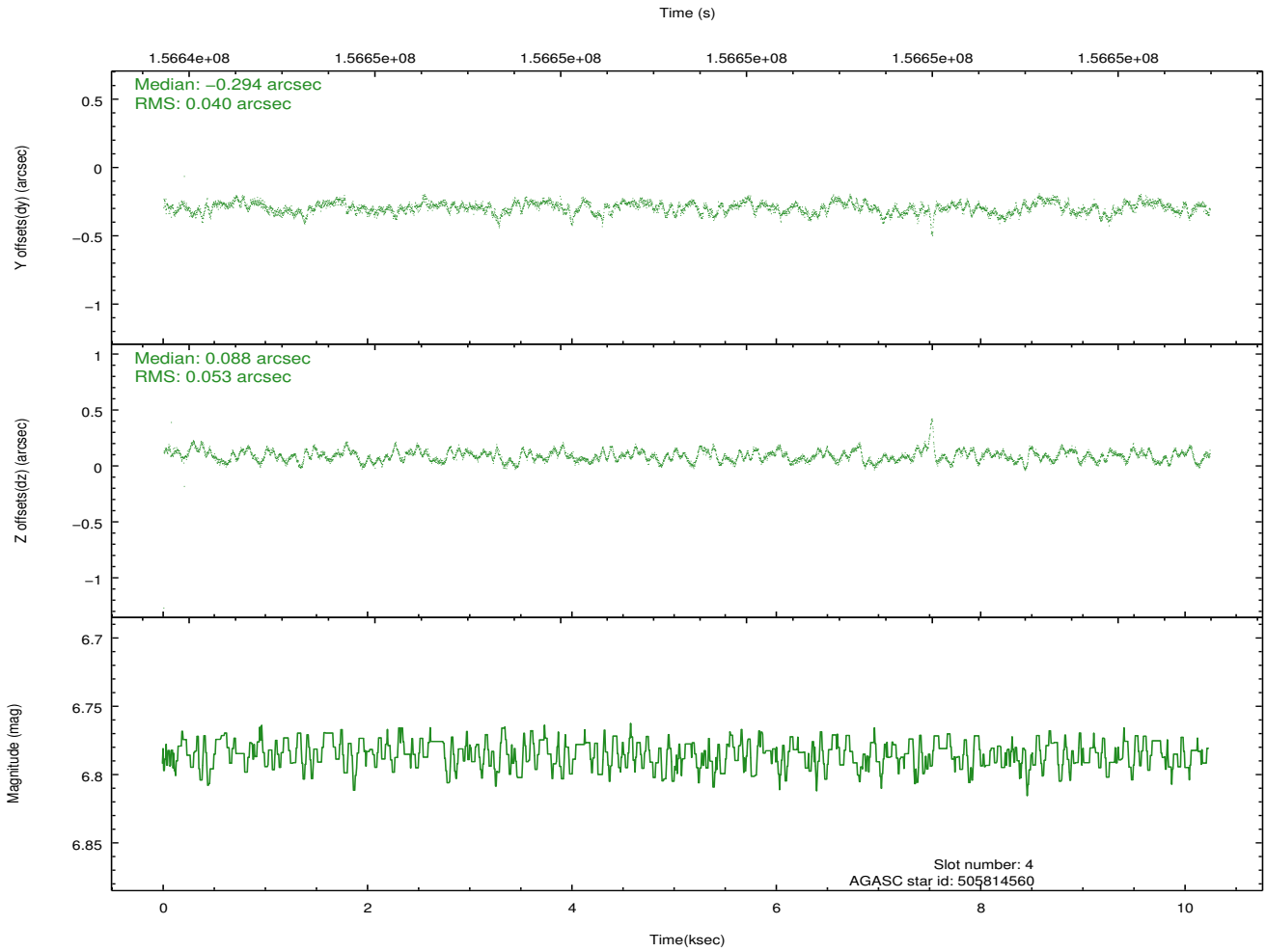
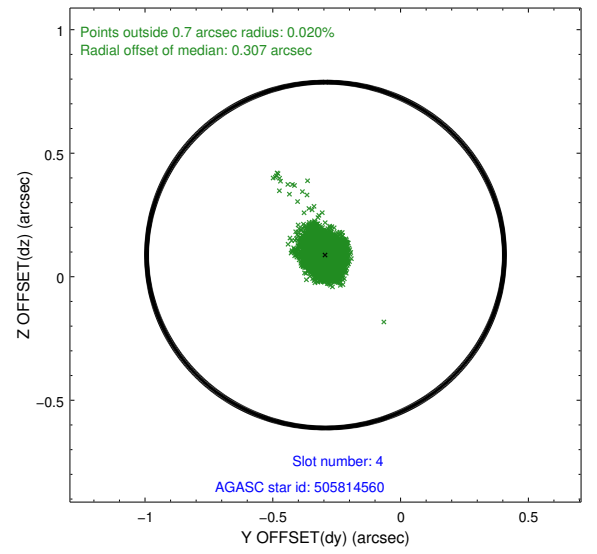
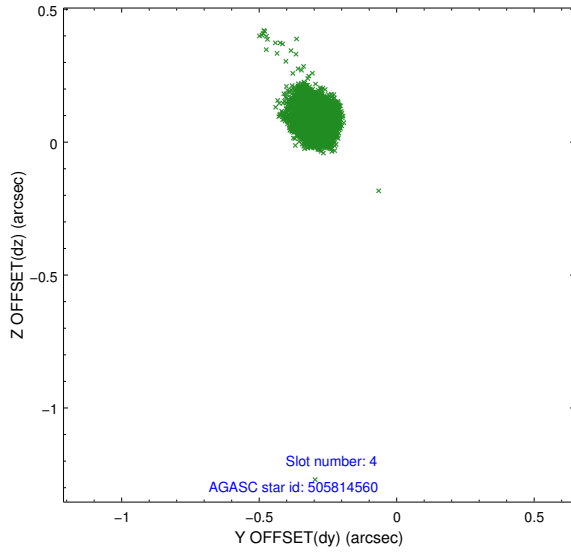
slot	status	id	mag	n_pts	med_dy	med_dz	dr1	dr2	ra	dec	mean_y	mean_z
0	FID	ACIS-S-2	7.12	2497	-0.019	-0.006	0.007	0.012	0.000000	0.000000	-755.33	-1728.61
1	FID	ACIS-S-4	7.20	2498	-0.008	0.011	0.005	0.009	0.000000	0.000000	2157.73	179.35
2	FID	ACIS-S-5	7.24	2498	-0.004	0.004	0.008	0.013	0.000000	0.000000	-1807.49	173.62
3	GUIDE	505811688	9.90	4914	0.273	-0.190	0.119	0.196	214.148747	53.627794	-452.67	1540.65
4	GUIDE	505814560	6.78	4996	-0.294	0.088	0.066	0.103	215.720521	53.810357	2344.93	-411.39
5	GUIDE	505812088	8.16	4996	0.137	-0.071	0.112	0.171	214.186617	53.263562	-1349.72	581.17
6	GUIDE	505815008	10.43	4878	-0.052	0.106	0.228	0.374	215.914204	53.713651	2387.40	-949.52
7	GUIDE	505817616	10.12	4990	-0.053	0.062	0.138	0.224	216.040487	53.402541	1784.18	-1930.74

## 2.4 Star Slots

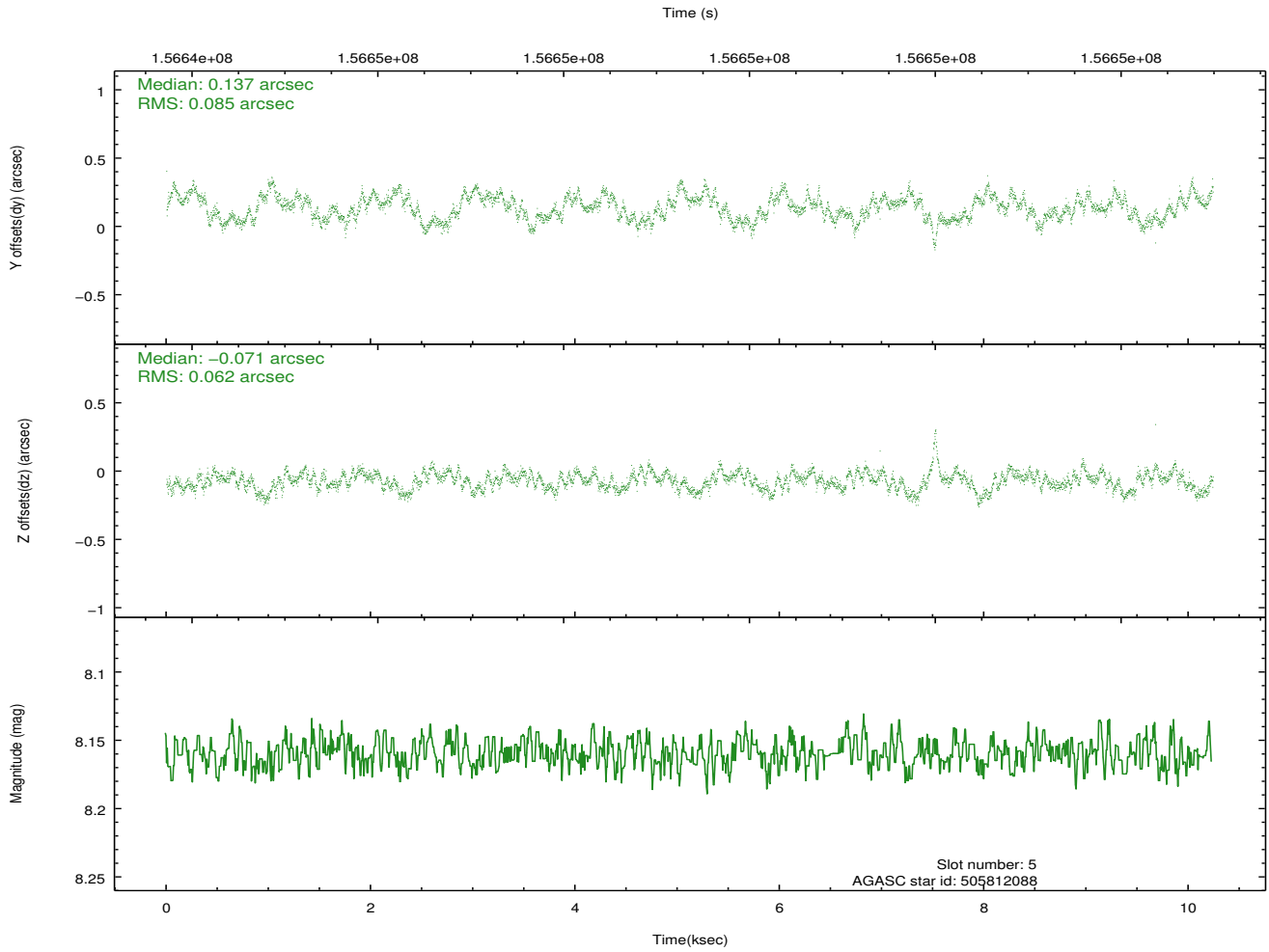
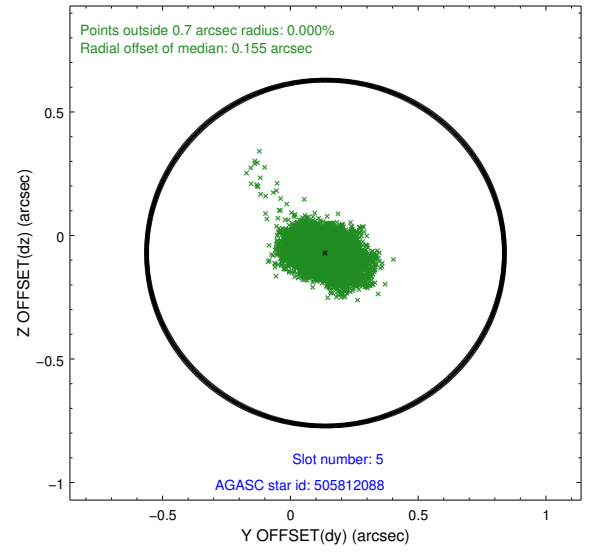
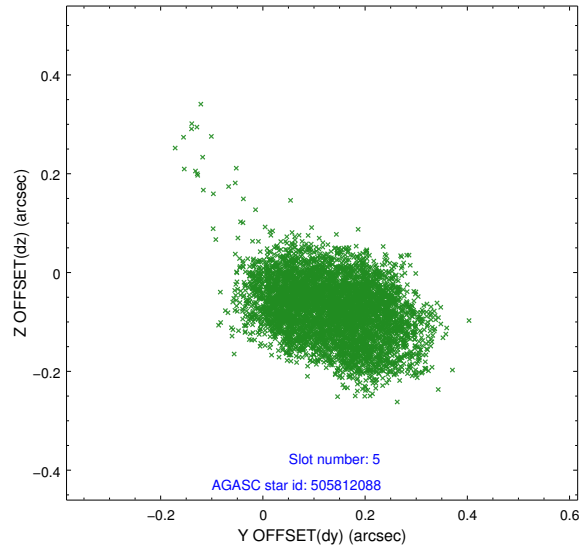
### 2.4.1 Slot 3



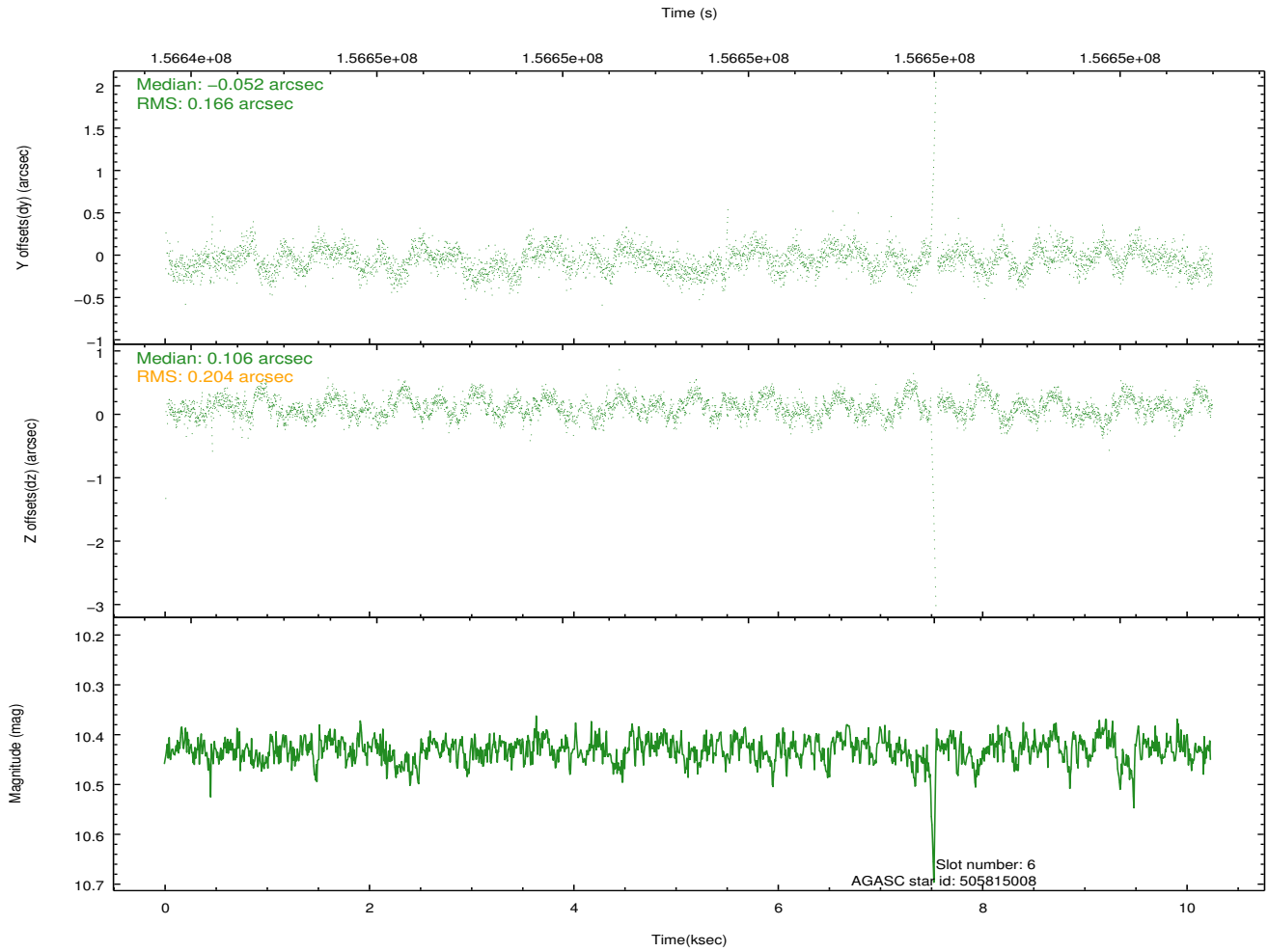
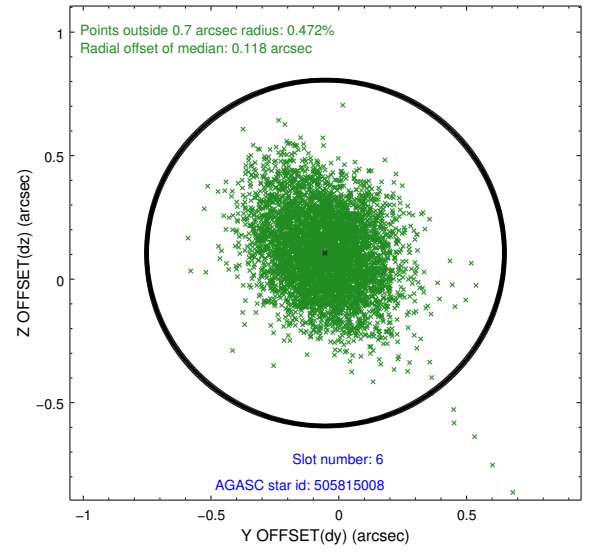
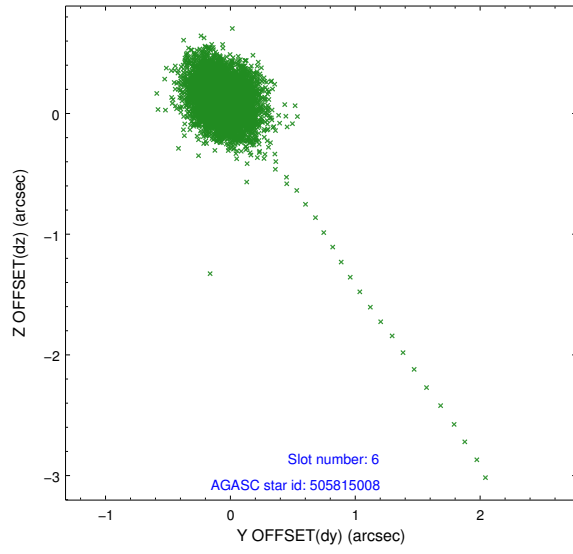
## 2.4.2 Slot 4



### 2.4.3 Slot 5

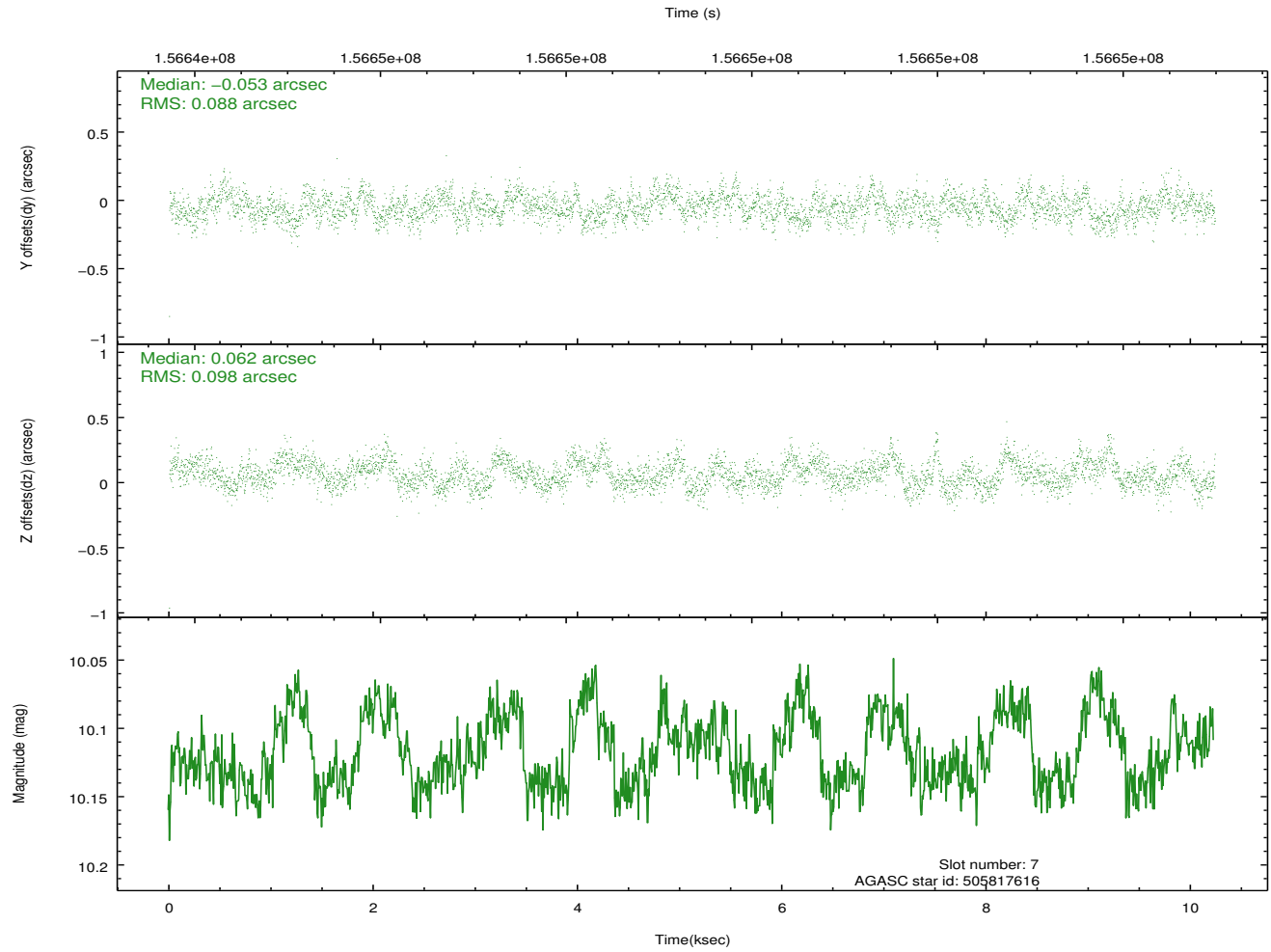
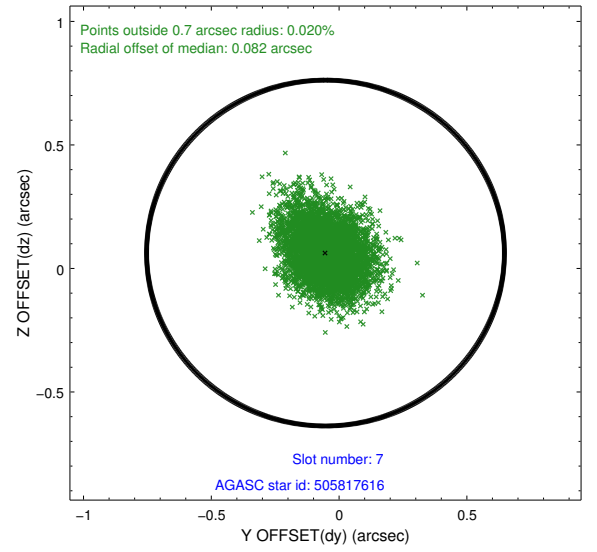
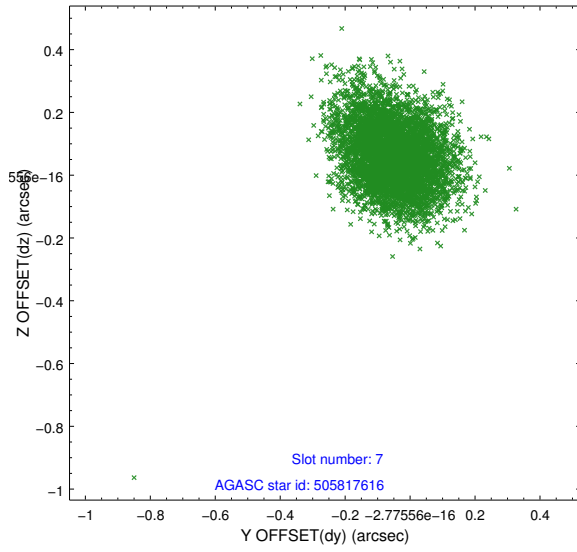


## 2.4.4 Slot 6



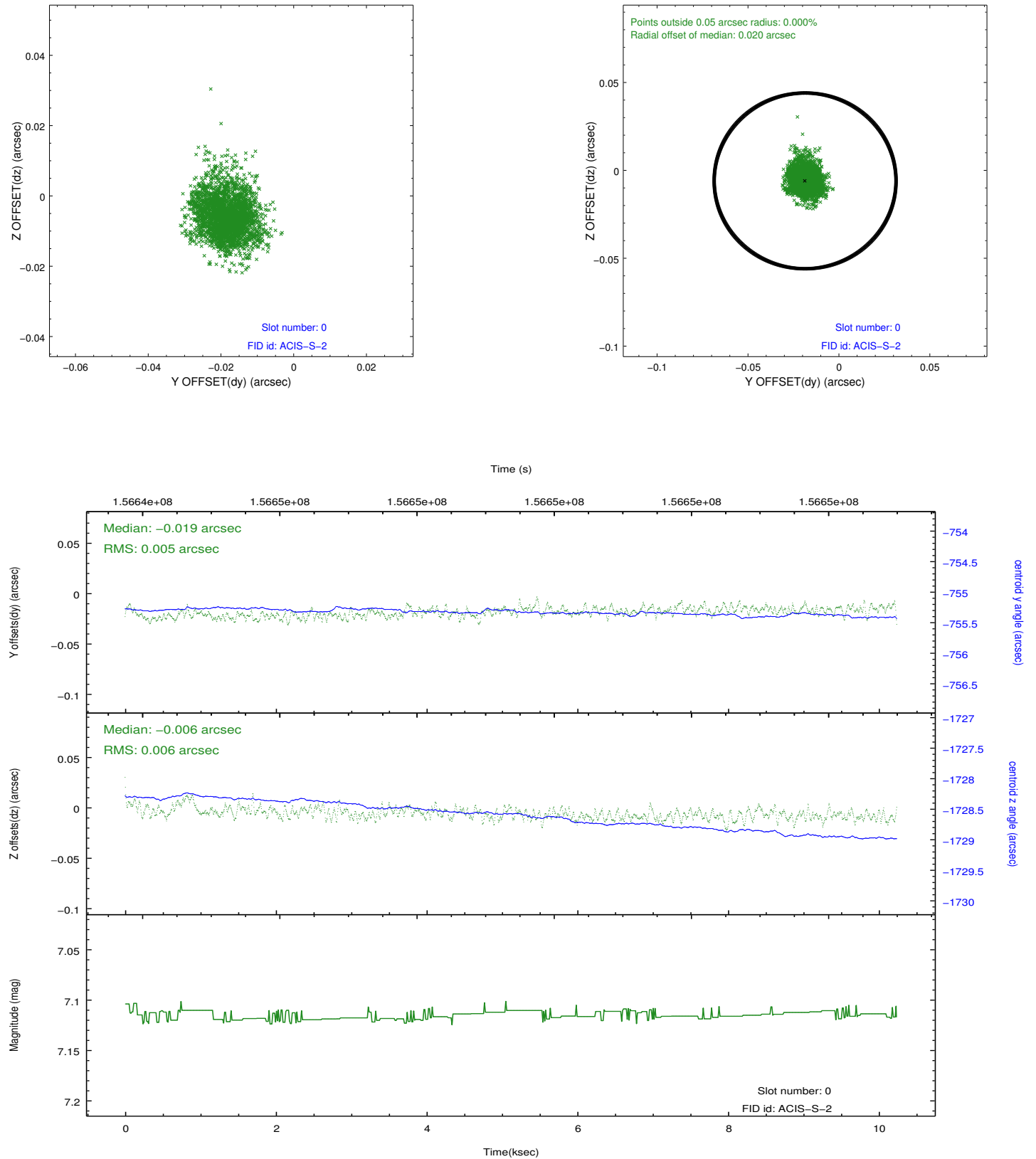


## 2.4.5 Slot 7

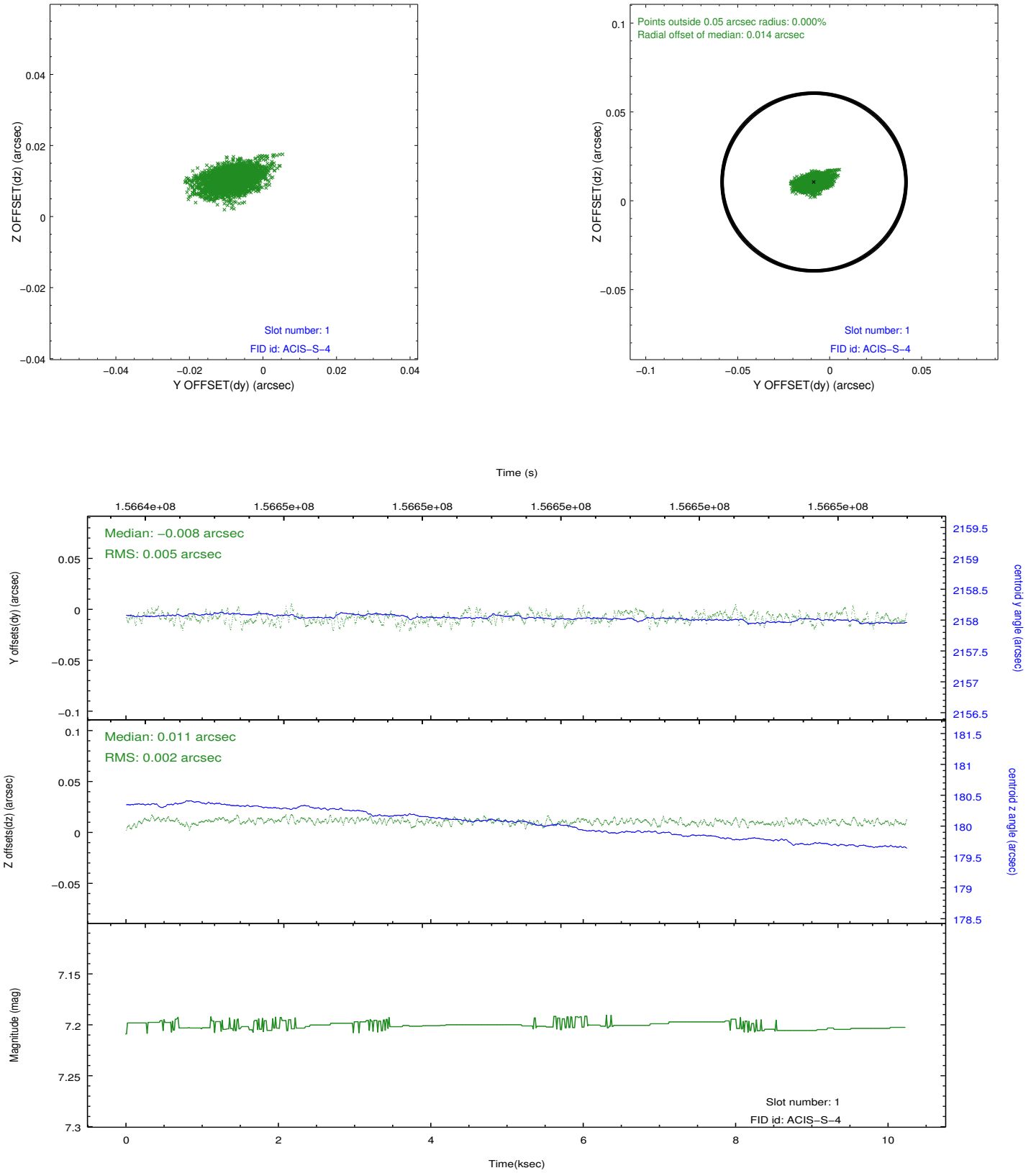


## 2.5 FID Slots

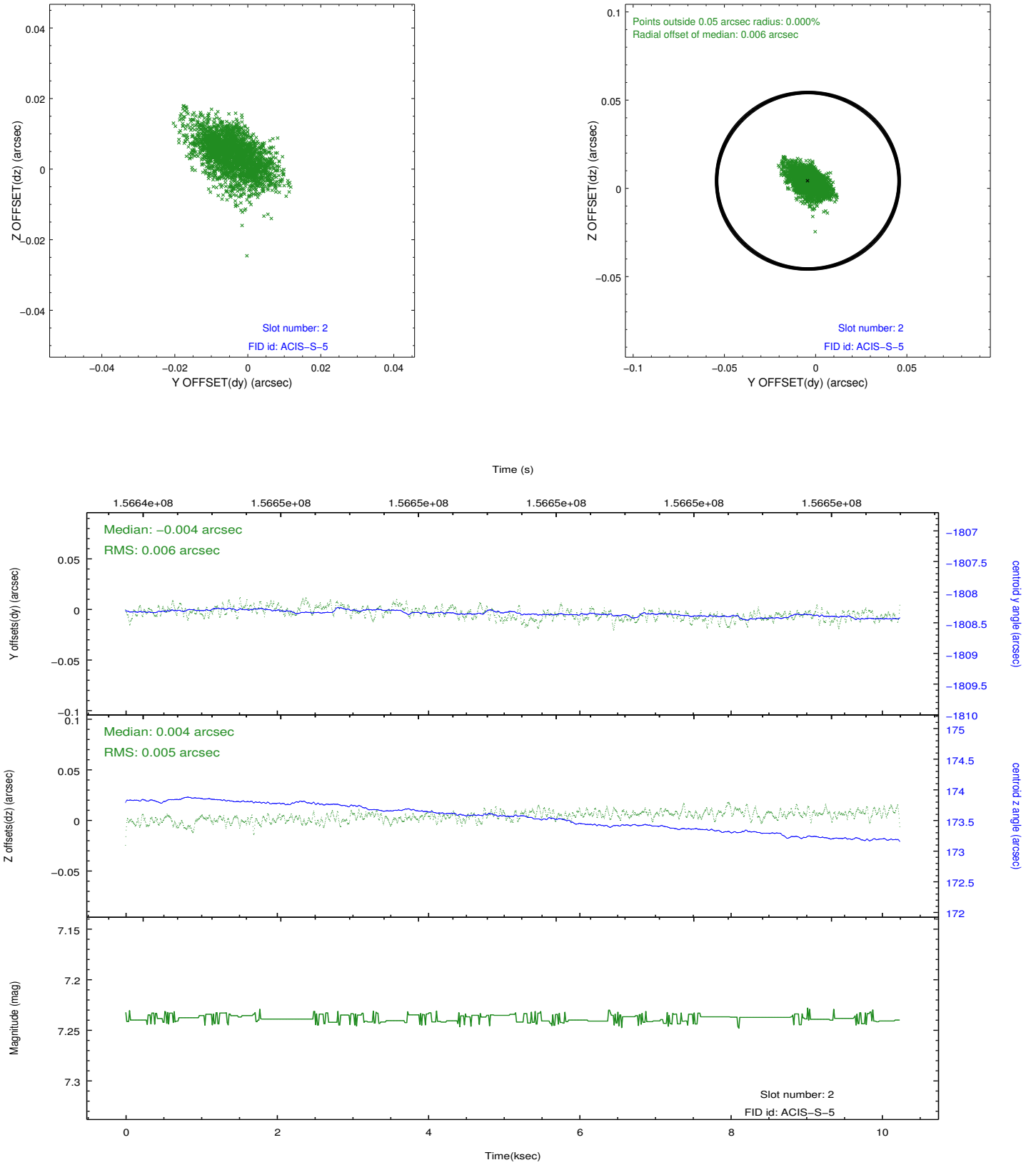
### 2.5.1 Slot 0



## 2.5.2 Slot 1



### 2.5.3 Slot 2



## **A Summary**

### **A.1 Status**

V&V Scientist	Jen Lauer
V&V Date (YYYY-MM-DD)	2012.10.31
V&V Edition	1
V&V Disposition and Status	OK
V&V Charge Time	10.034

### **A.2 Comments**