

V&V Reference Report

L2 ASCDS Version : 7.6.8.1

Observation 3100 - L2 Version 001
Chandra X-Ray Center

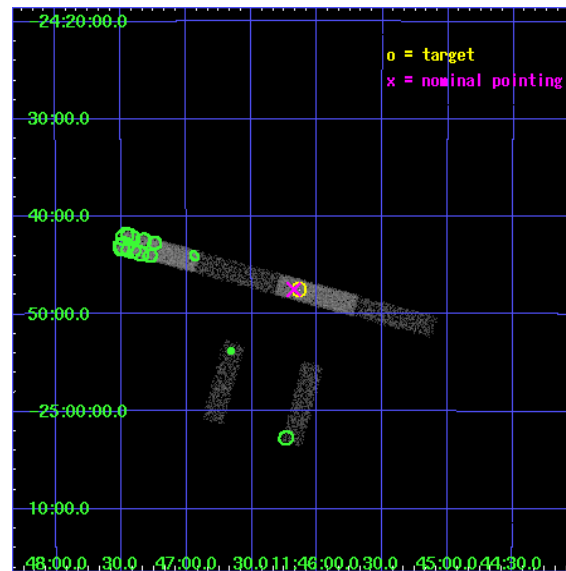
L2 Processing Date : Sep 6 2006

Contents

1	Front	2
2	OBI	3
2.1	OBI	3
2.1.1	Images	3
2.1.2	Bias	3
2.1.3	Parameters	4
2.1.4	Events	4
2.2	Compared Parameters	5
2.3	Aspect	6
2.4	Star Slots	9
2.4.1	Slot 3	9
2.4.2	Slot 4	10
2.4.3	Slot 5	11
2.4.4	Slot 6	12
2.4.5	Slot 7	13
2.5	FID Slots	14
2.5.1	Slot 0	14
2.5.2	Slot 1	15
2.5.3	Slot 2	16
3	Point Sources	17
A	Summary	18
A.1	Status	18
A.2	Comments	18

1 Front

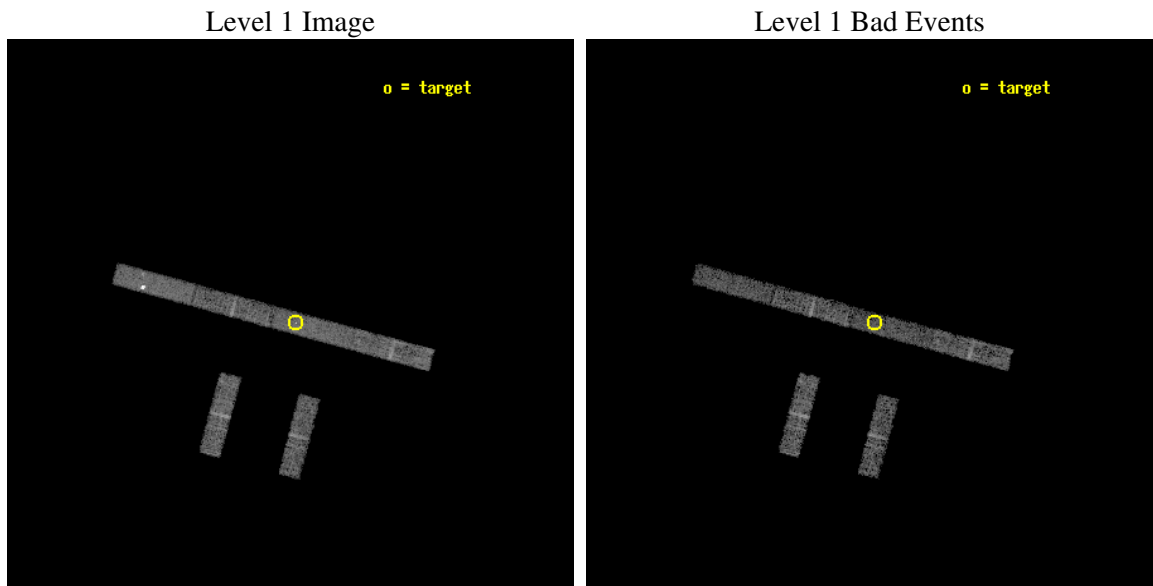
seq_num	700539
obs_id	3100
title	X-RAY IMAGING OF GPS AND CSS QUASARS
observer	Dr Aneta Siemiginowska
object	Q1143-245
dtcycle	0
cycle	P
ra_targ	176.53375
dec_targ	-24.7925
ra_nom	176.54440939586
dec_nom	-24.791674654652
roll_nom	15.1752517485
revision	2
ontime	5139.1999721527
livetime	4954.3574014653
ontime2	5139.1999721527
ontime3	5139.1999721527
ontime5	5139.1999721527
ontime6	5139.1999721527
ontime7	5139.1999721527
ontime8	5139.1999721527
l2events	14254



2 OBI

2.1 OBI

2.1.1 Images



2.1.2 Bias

Chip 2

Chip 3

Chip 5



Chip 6

Chip 7

Chip 8



2.1.3 Parameters

obi_num	1
ascdsver	7.6.8.1
caldsver	3.2.3
date	2006-09-06T11:40:06
revision	2

sched_exp_time	5000.000000
ontime	6321.2955057919
ontime2	6321.2955057919
ontime3	6321.2955057919
ontime5	6321.2955057919
ontime6	6321.2955057919
ontime7	6321.2955057919
ontime8	6322.4365457892
l1events	91782

2.1.4 Events

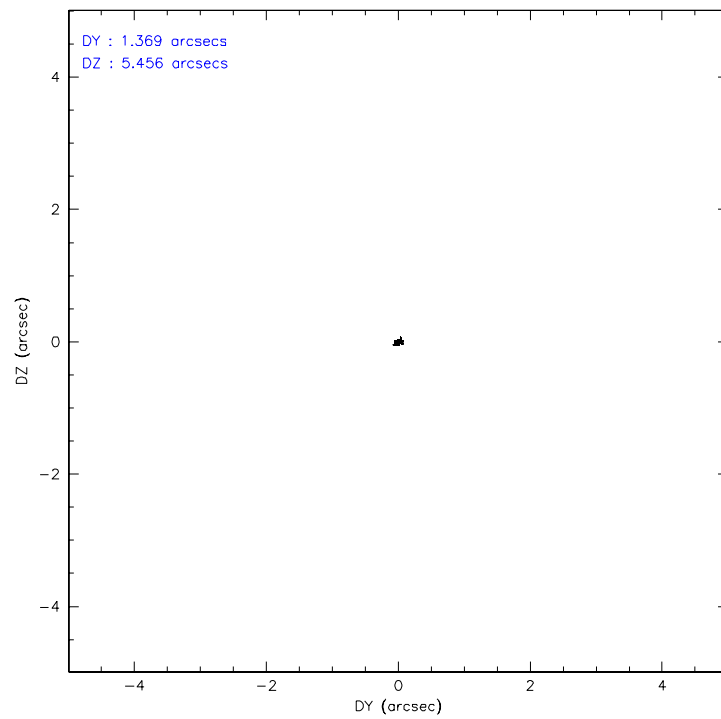
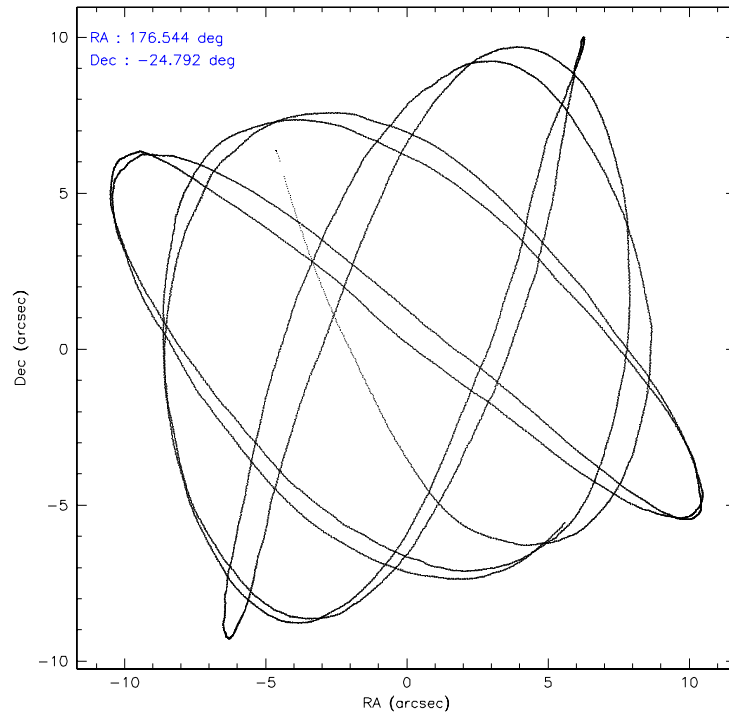
	ccd 2	ccd 3	ccd 5	ccd 6	ccd 7	ccd 8
level 1 events	14691	11860	20986	13027	14961	16257
rejected events	13517	10723	11207	11838	9926	13612
rejected %	92%	90%	53%	90%	66%	83%

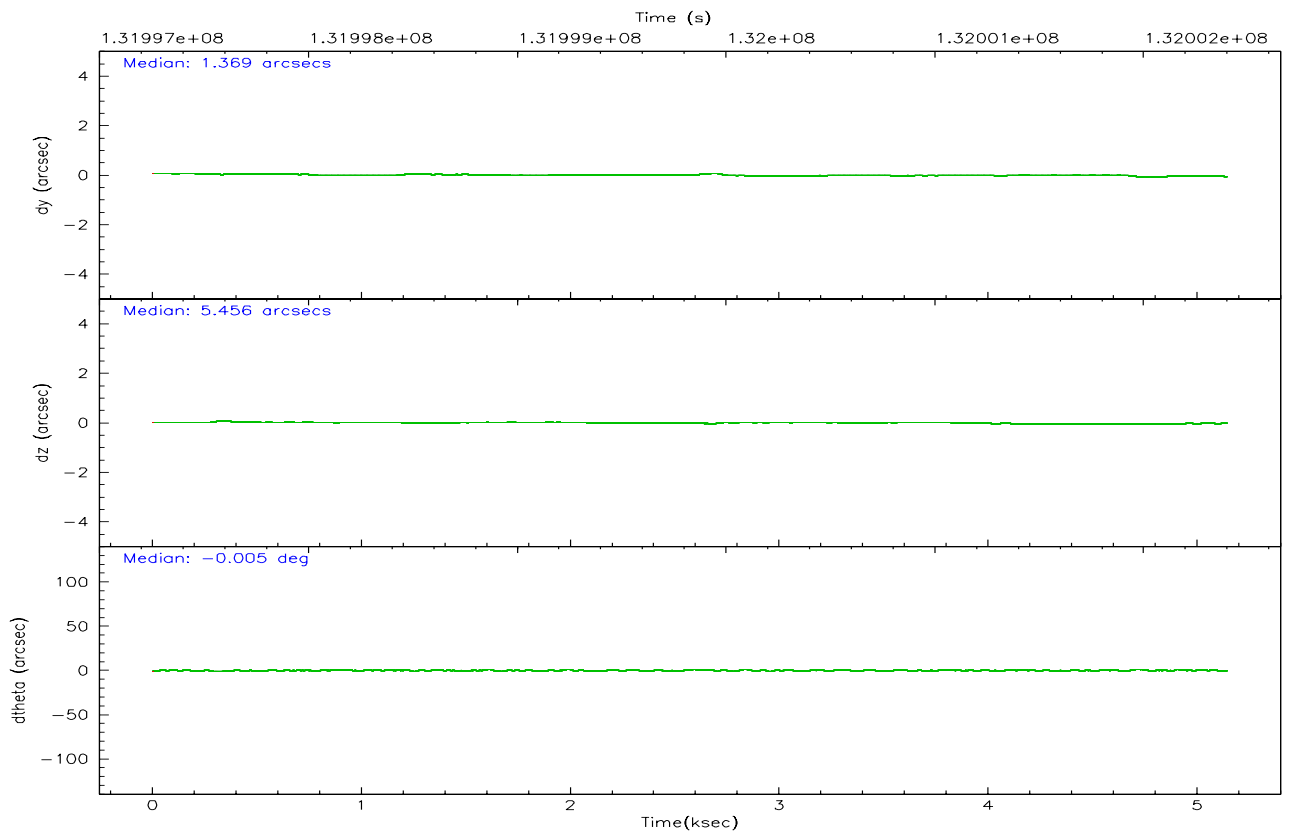
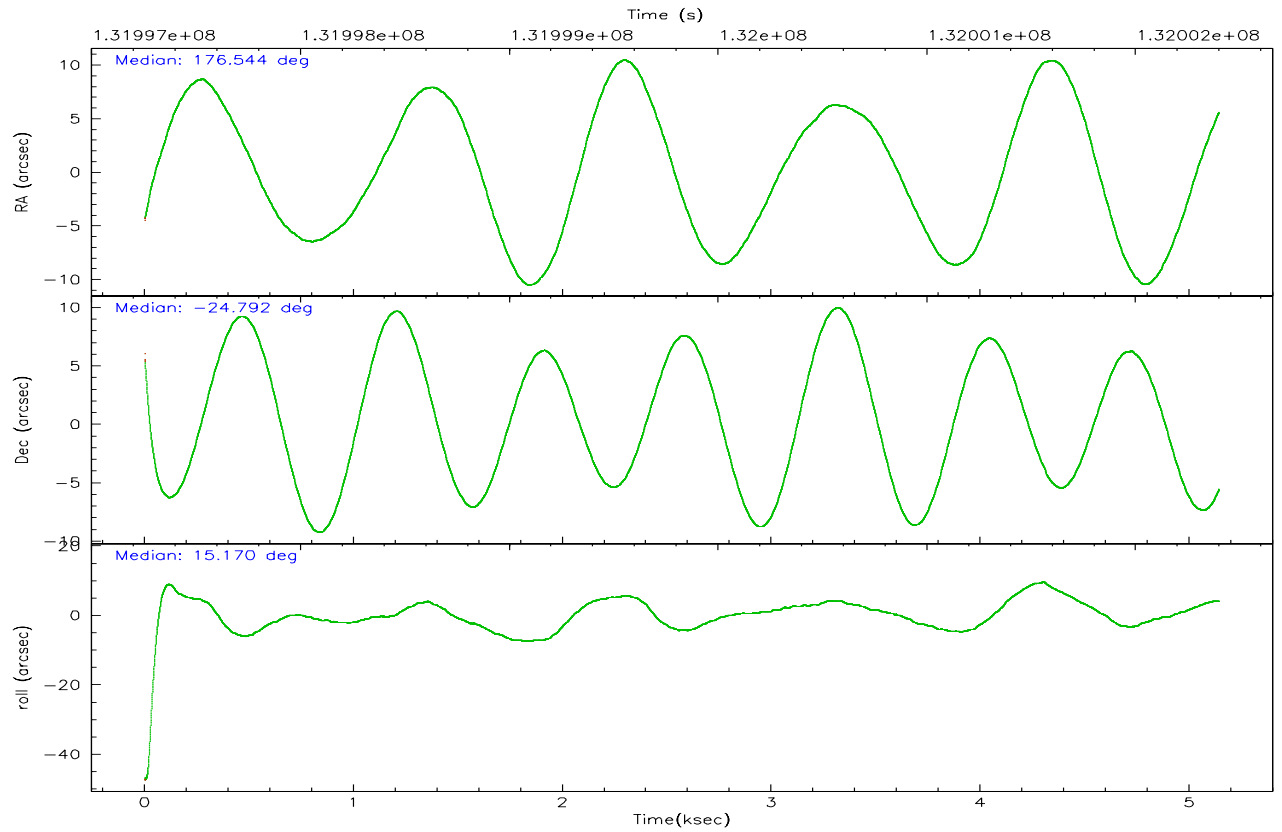
	ccd 2	ccd 3	ccd 5	ccd 6	ccd 7	ccd 8
grade 0 events	502	535	5463	511	483	976
	3%	4%	26%	3%	3%	6%
grade 1 events	2	4	15	5	15	7
	0%	0%	0%	0%	0%	0%
grade 2 events	321	267	2254	273	1544	601
	2%	2%	10%	2%	10%	3%
grade 3 events	174	189	242	205	488	441
	1%	1%	1%	1%	3%	2%
grade 4 events	208	173	204	208	416	430
	1%	1%	0%	1%	2%	2%
grade 5 events	423	427	743	485	996	547
	2%	3%	3%	3%	6%	3%
grade 6 events	246	228	3913	245	3274	855
	1%	1%	18%	1%	21%	5%
grade 7 events	12815	10037	8152	11095	7745	12400
	87%	84%	38%	85%	51%	76%

2.2 Compared Parameters

Parameter	Planned	Actual	Parameter	Planned	Actual
Instrument	ACIS	ACIS	Obspar format version number	6	6
Detector	ACIS-235678	ACIS-235678	Obspar file type	PREDICTED	ACTUAL
Grating	NONE	NONE	Obspar update status	NONE	UPDATED
Data mode	FAINT	FAINT	On-chip summing requested	N	N
Observation mode	POINTING	POINTING	Subarray requested	1/4	1/4
Pointing RA	176.523500	176.544409395856	Subarray start row	0	385
Pointing Dec	-24.811212	-24.79167465465213	Subarray row count	1024	256
Pointing Roll	15.009986	15.17525174849957	Alternating exposures requested	N	N
SIM focus pos (mm)	-0.684267	-0.6828225247311905	Primary exposure time	0.000000	1.1
SIM defocus (mm)	0	0.001444936568705701			
SIM translation stage pos (mm)	-190.132523	-190.1400660498719			
SIM translation stage offset (mm)	0	0.00754346686406393			
Observation start time	131997401.184000	131996056.1318			
Observation start date	2002-03-08T17:55:37	2002-03-08T17:34:16			
Observation end time	132002401.184000	132002864.69458			
Observation end date	2002-03-08T19:18:57	2002-03-08T19:27:44			
Read mode	TIMED	TIMED			

2.3 Aspect



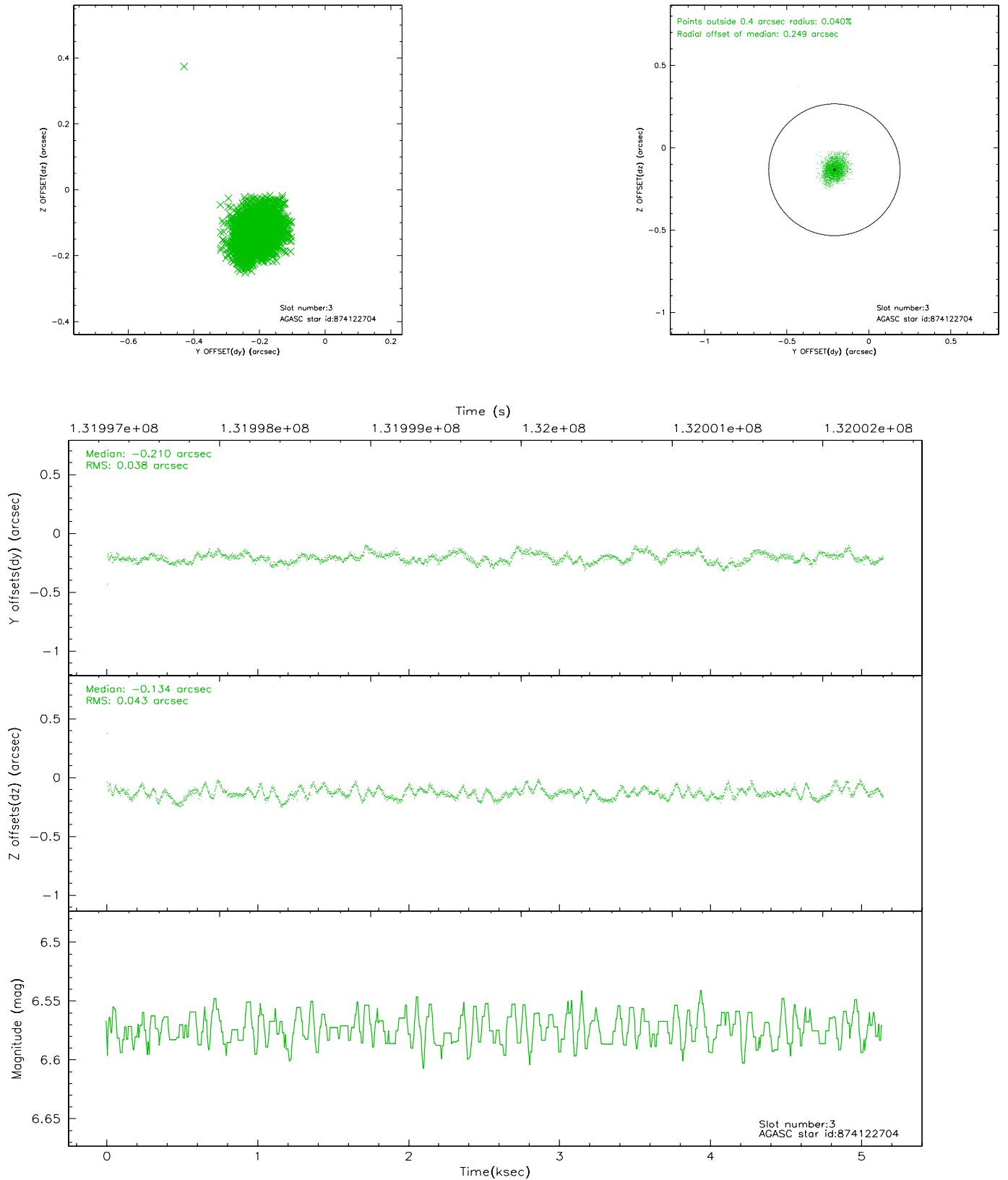


Slot Statistics

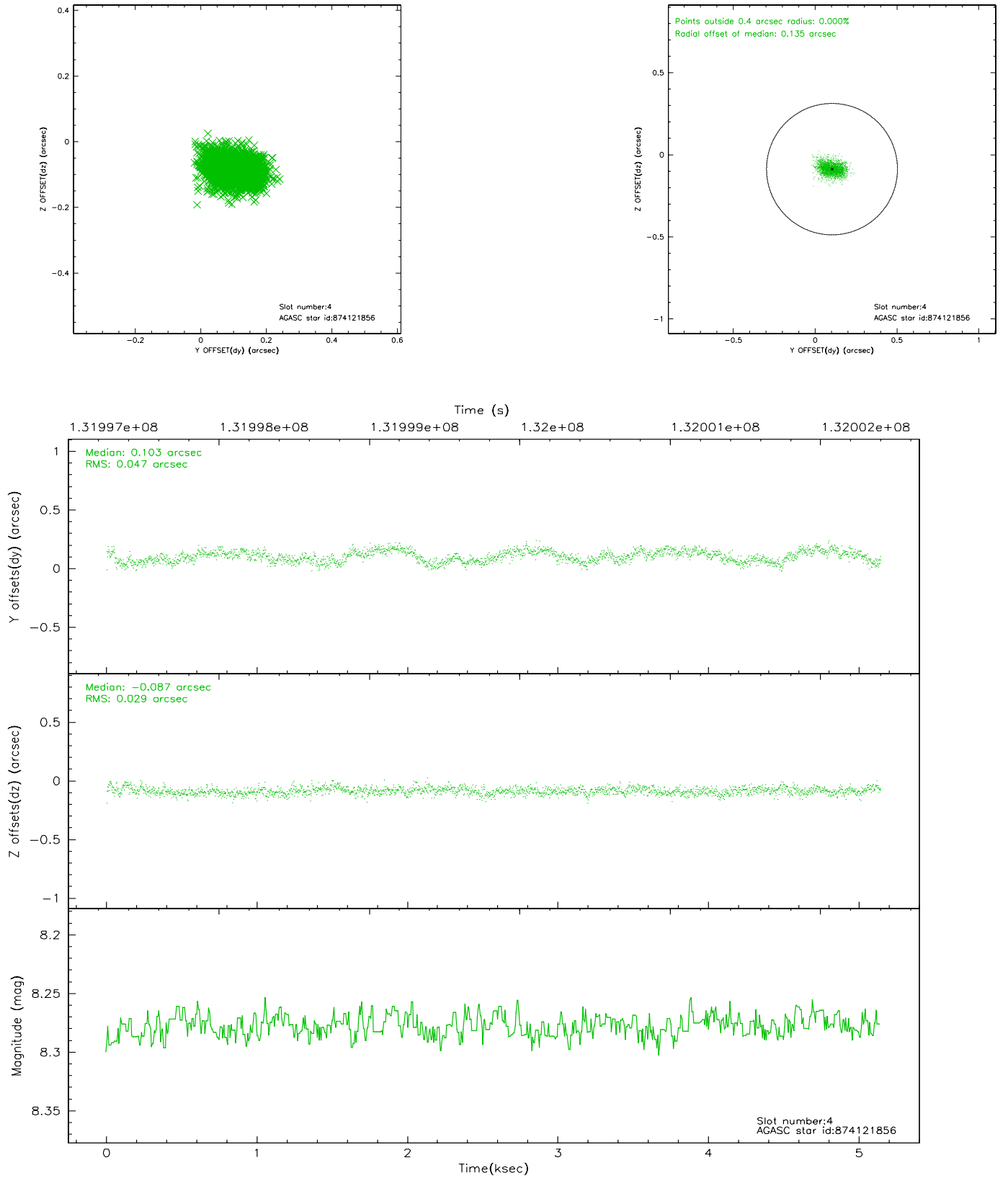
slot	status	id	mag	n_pts	med_dy	med_dz	dr1	dr2	ra	dec	mean_y	mean_z
0	FID	ACIS-S-2	7.12	1255	-0.042	0.025	0.006	0.011	0.000000	0.000000	-753.96	-1726.57
1	FID	ACIS-S-4	7.21	1255	-0.050	0.013	0.005	0.009	0.000000	0.000000	2158.73	180.76
2	FID	ACIS-S-5	7.24	1255	0.060	-0.030	0.006	0.010	0.000000	0.000000	-1805.23	175.63
3	GUIDE	874122704	6.57	2509	-0.210	-0.134	0.060	0.098	176.621779	-24.484403	615.09	1052.66
4	GUIDE	874121856	8.28	2509	0.103	-0.087	0.059	0.094	175.838313	-24.758064	-2115.43	759.52
5	GUIDE	874124696	8.22	2509	-0.078	0.073	0.105	0.162	177.127078	-25.085872	1642.54	-1468.58
6	GUIDE	874127440	9.87	2507	-0.043	0.150	0.101	0.171	176.981451	-25.281076	1001.69	-2022.81
7	GUIDE	874123520	9.91	2431	0.232	-0.003	0.115	0.181	175.983547	-24.532742	-1449.03	1421.74

2.4 Star Slots

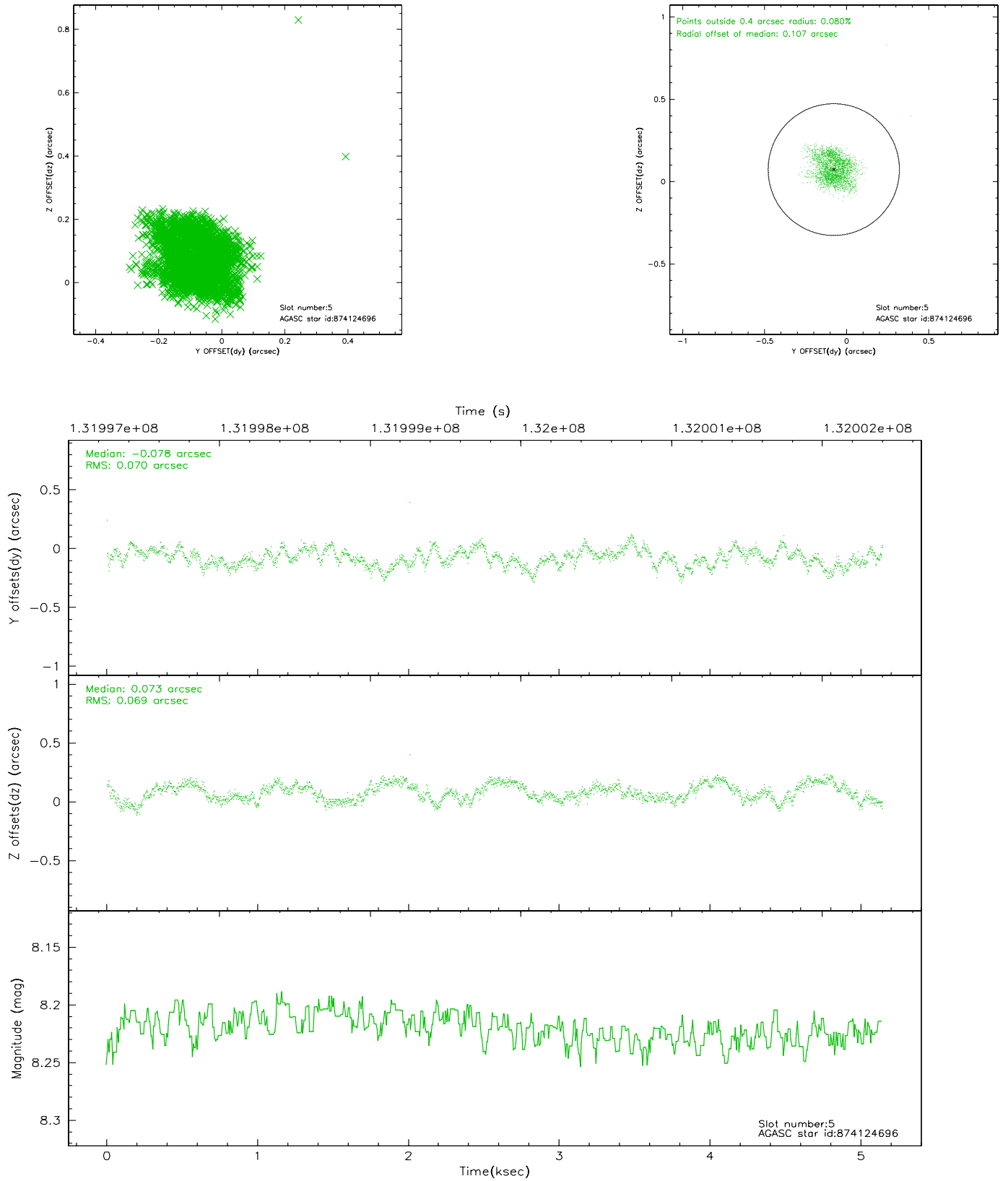
2.4.1 Slot 3



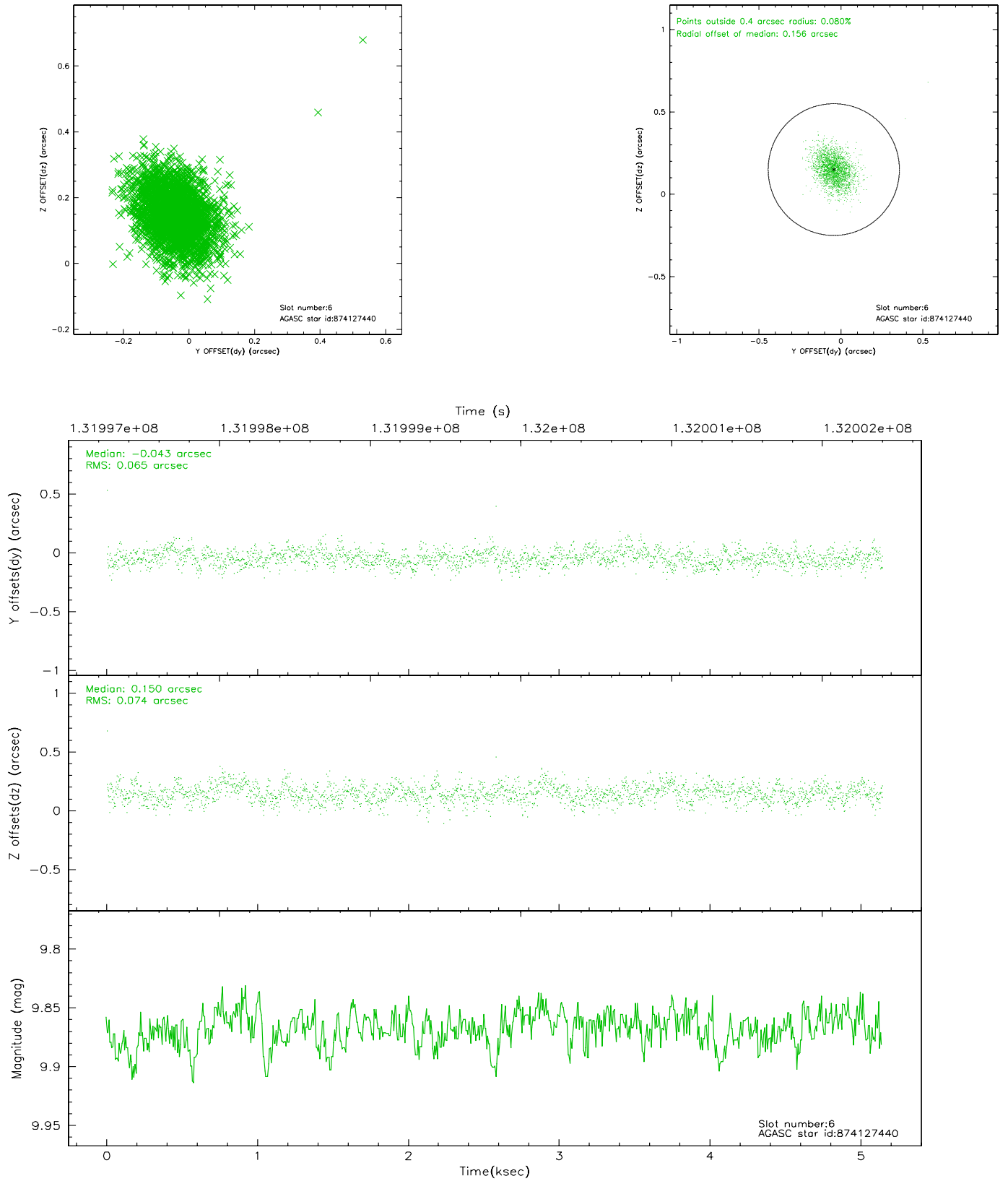
2.4.2 Slot 4



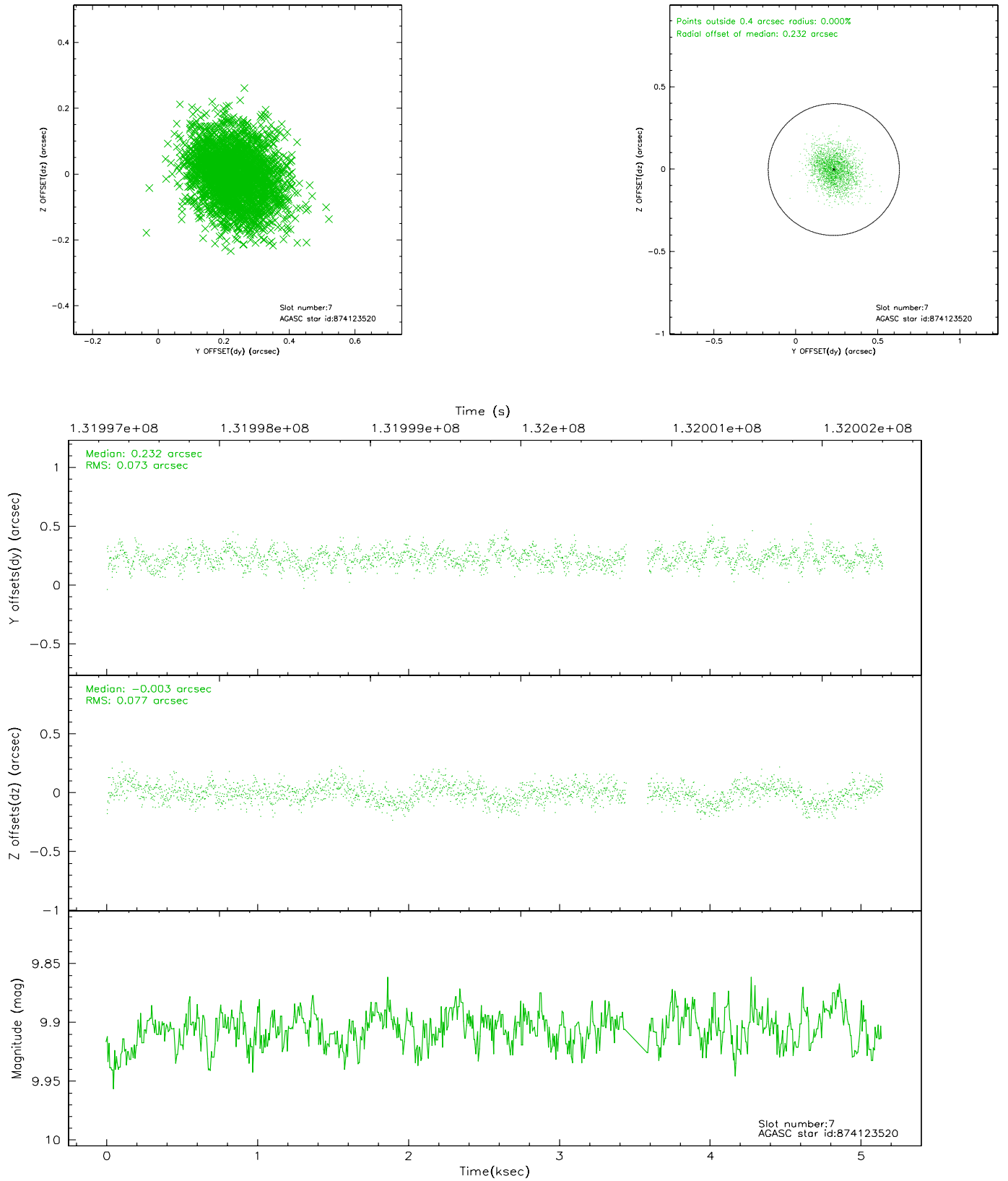
2.4.3 Slot 5



2.4.4 Slot 6

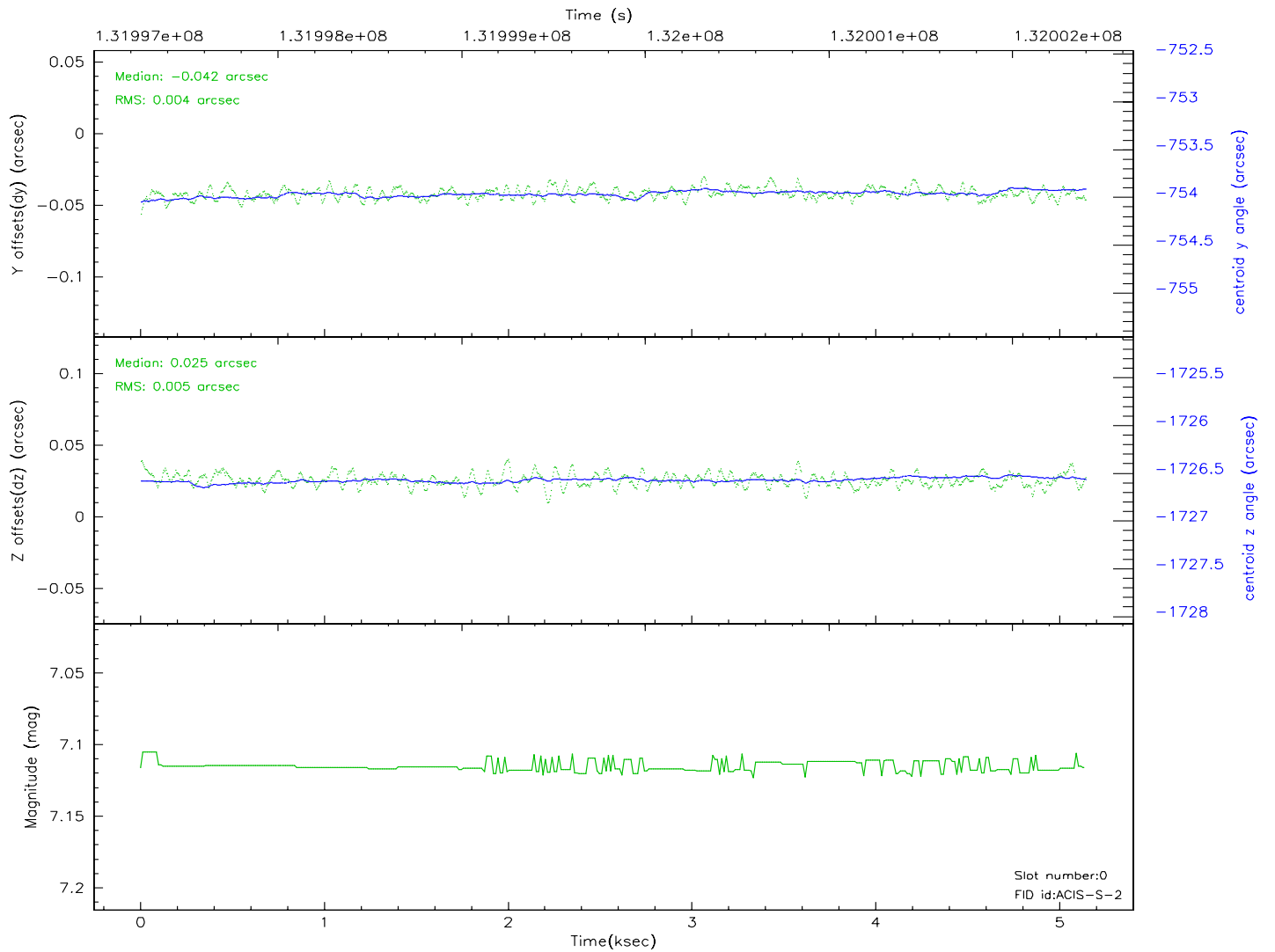
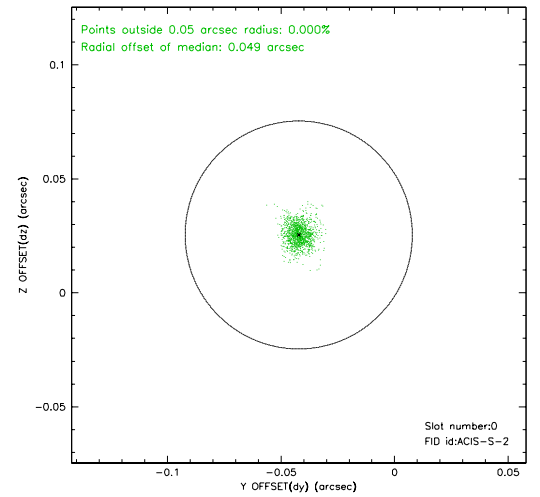
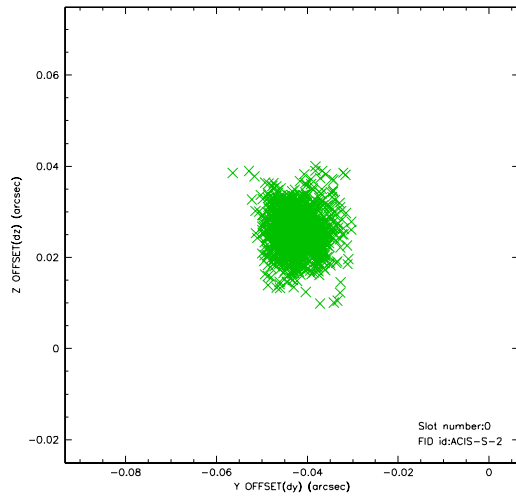


2.4.5 Slot 7

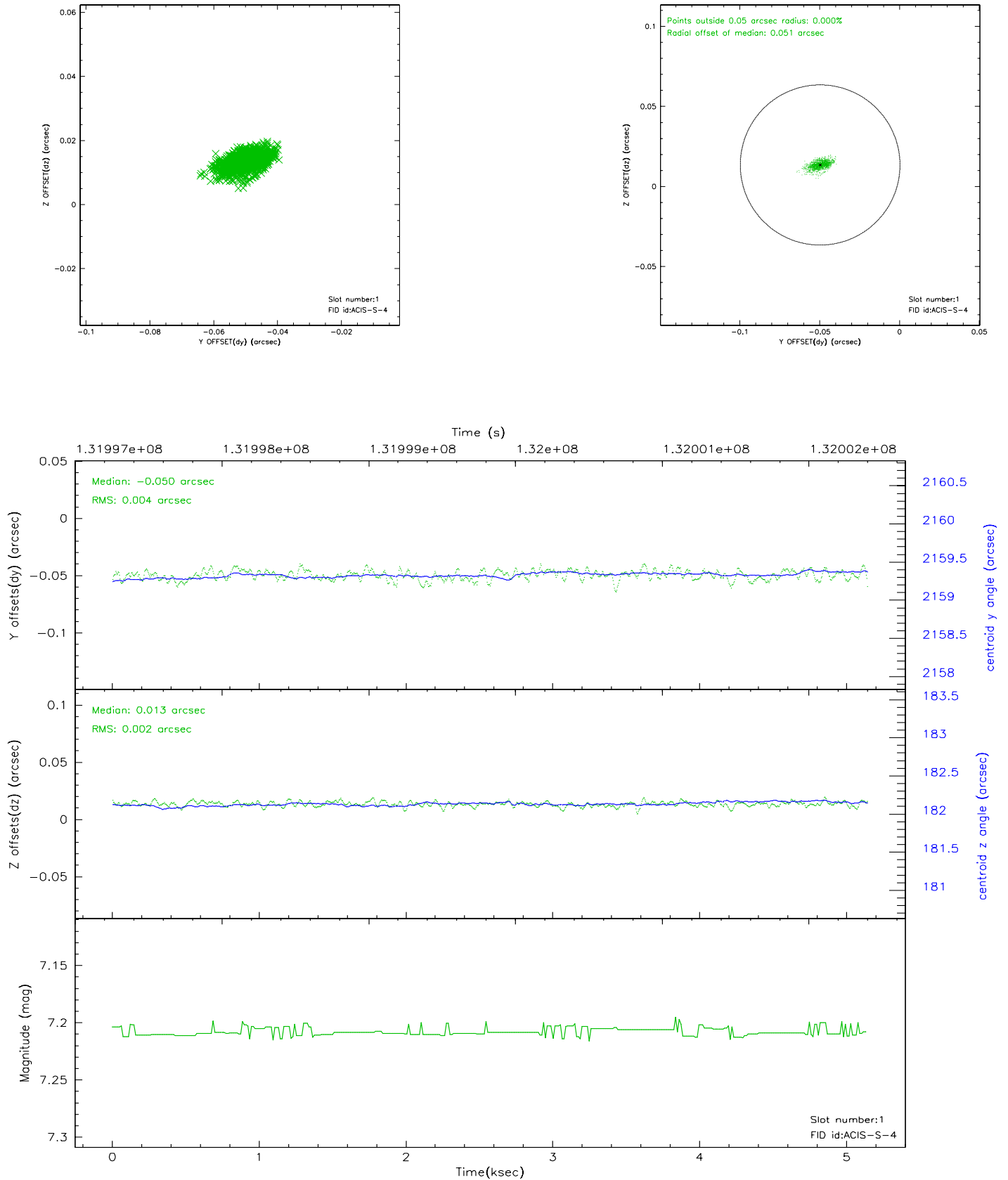


2.5 FID Slots

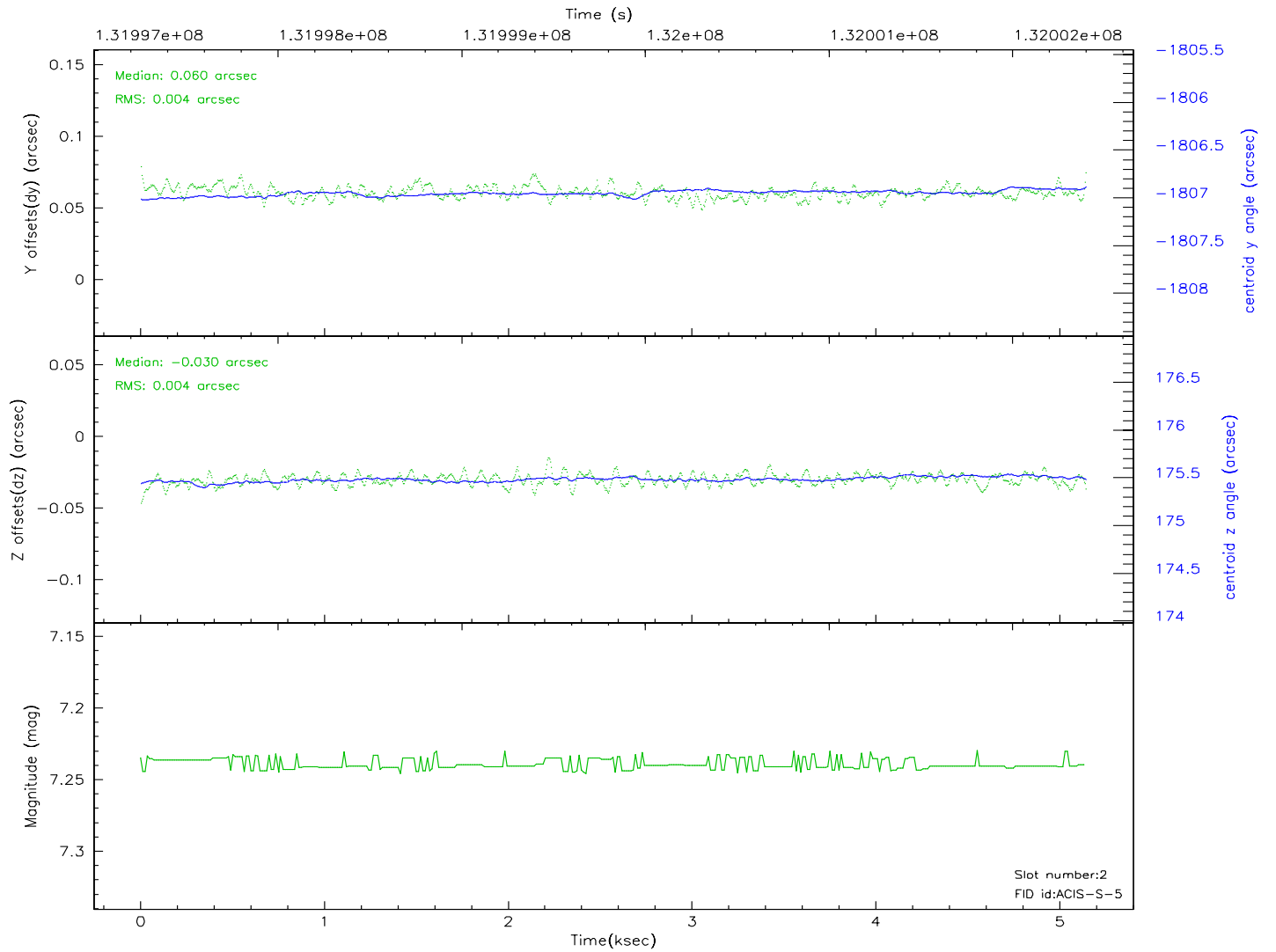
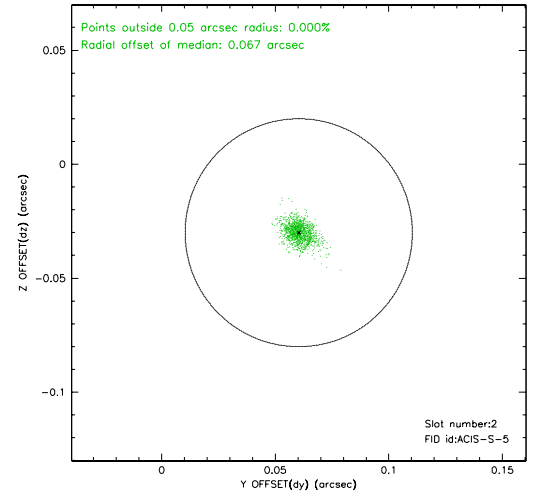
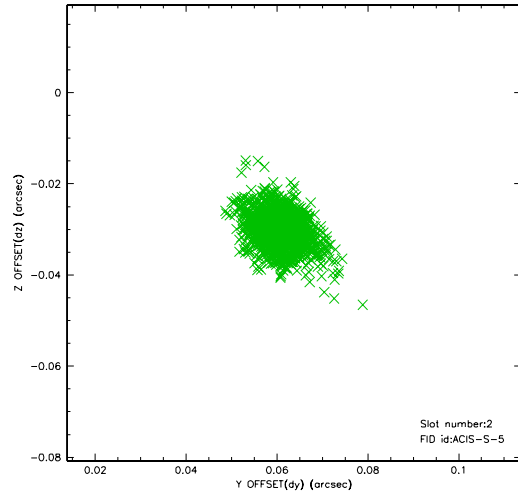
2.5.1 Slot 0



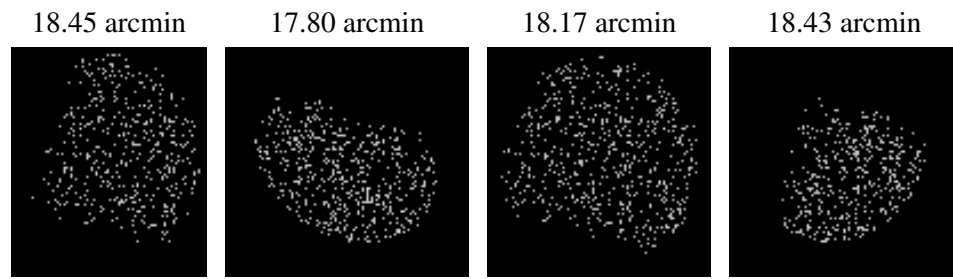
2.5.2 Slot 1



2.5.3 Slot 2



3 Point Sources



A Summary

A.1 Status

V&V Scientist	Jen Lauer
V&V Date (YYYY-MM-DD)	2006.09.06
V&V Edition	1
V&V Disposition and Status	OK
V&V Charge Time	5.139

A.2 Comments