

V&V Reference Report

L2 ASCDS Version : 8.4.5

Observation 310 - L2 Version 4
Chandra X-Ray Center

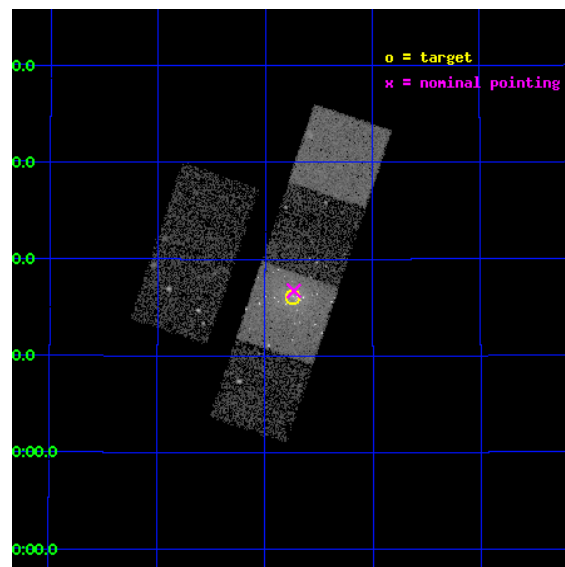
L2 Processing Date : Aug 29 2012

Contents

1	Front	2
2	OBI	3
2.1	OBI	3
2.1.1	Images	3
2.1.2	Bias	3
2.1.3	Parameters	4
2.1.4	Events	4
2.2	Compared Parameters	5
2.3	Aspect	6
2.4	Star Slots	9
2.4.1	Slot 3	9
2.4.2	Slot 4	10
2.4.3	Slot 5	11
2.4.4	Slot 6	12
2.4.5	Slot 7	13
2.5	FID Slots	14
2.5.1	Slot 0	14
2.5.2	Slot 1	15
2.5.3	Slot 2	16
A	Summary	17
A.1	Status	17
A.2	Comments	17

1 Front

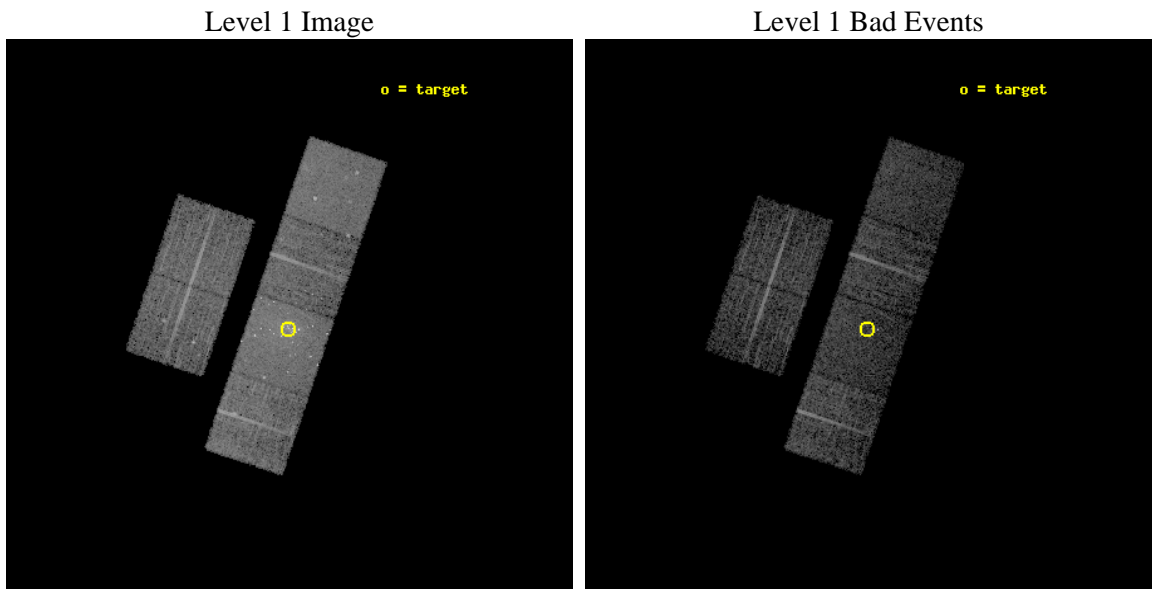
seq_num	600070	Sequence number
obs_id	310	Observation id
title	M31 MONITORING (FOLLOWUP)	Proposal title
observer	Dr. Stephen Murray	Principal investigator
object	M31 TRANSIENT TBD	Source name
dtcycle	0	
cycle	P	events from which exps? Prim/Second/Both
ra_targ	10.685	Observer's specified target RA [deg]
dec_targ	41.268972	Observer's specified target Dec [deg]
ra_nom	10.683111396224	Nominal RA [deg]
dec_nom	41.278759184581	Nominal Dec [deg]
roll_nom	108.74985193777	Nominal Roll [deg]
revision	4	Processing version of data
ontime	5139.2000047714	Sum of GTIs [s]
livetime	5074.1243598562	Livetime [s]
ontime2	5139.2000047714	Sum of GTIs [s]
ontime3	5139.2000047714	Sum of GTIs [s]
ontime5	5139.2000047714	Sum of GTIs [s]
ontime6	5139.2000047714	Sum of GTIs [s]
ontime7	5139.2000047714	Sum of GTIs [s]
ontime8	5139.2000047714	Sum of GTIs [s]
l2events	71490	Number of level 2 events



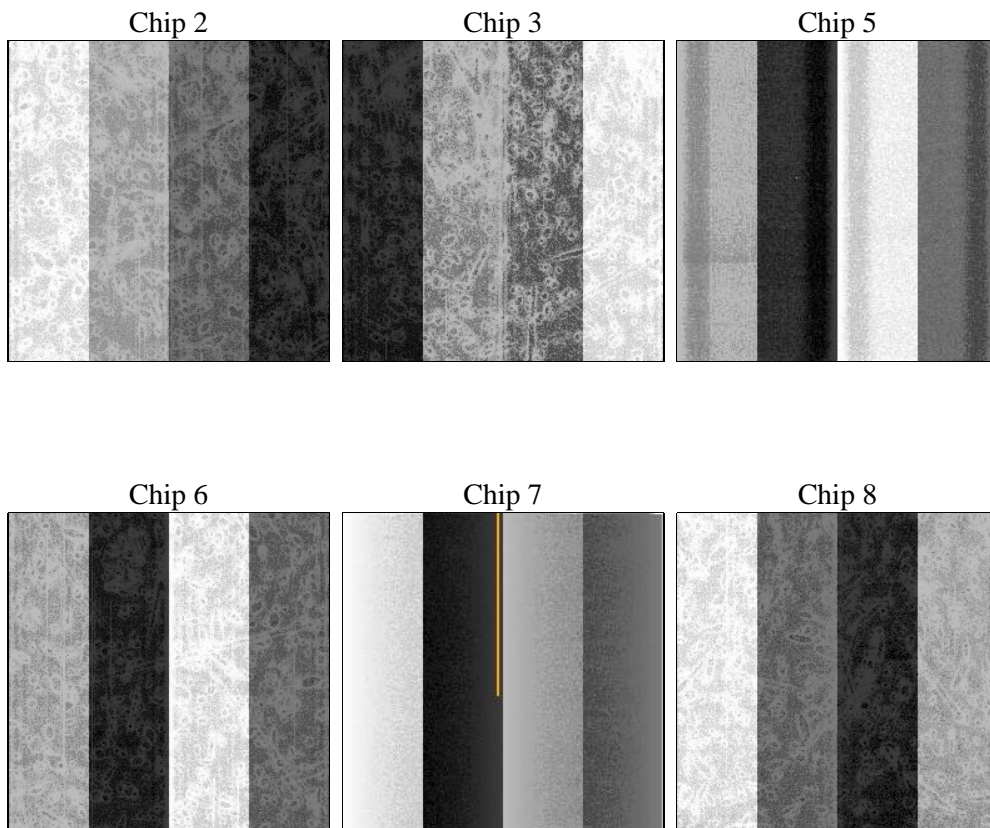
2 OBI

2.1 OBI

2.1.1 Images



2.1.2 Bias



2.1.3 Parameters

obi_num	0	Obi number	sched_exp_time	5000.000000	[s] Scheduled observation exposure time
ascdsver	8.4.5	Processing system revision	ontime	5139.2000047714	Sum of GTIs [s]
caldbver	4.5.1.1	 	ontime2	5139.2000047714	Sum of GTIs [s]
date	2012-08-30T01:13:53	Date and time of file creation	ontime3	5139.2000047714	Sum of GTIs [s]
revision	4	Processing version of data	ontime5	5139.2000047714	Sum of GTIs [s]
			ontime6	5139.2000047714	Sum of GTIs [s]
			ontime7	5139.2000047714	Sum of GTIs [s]
			ontime8	5139.2000047714	Sum of GTIs [s]
			l1events	268813	Number of level 1 events

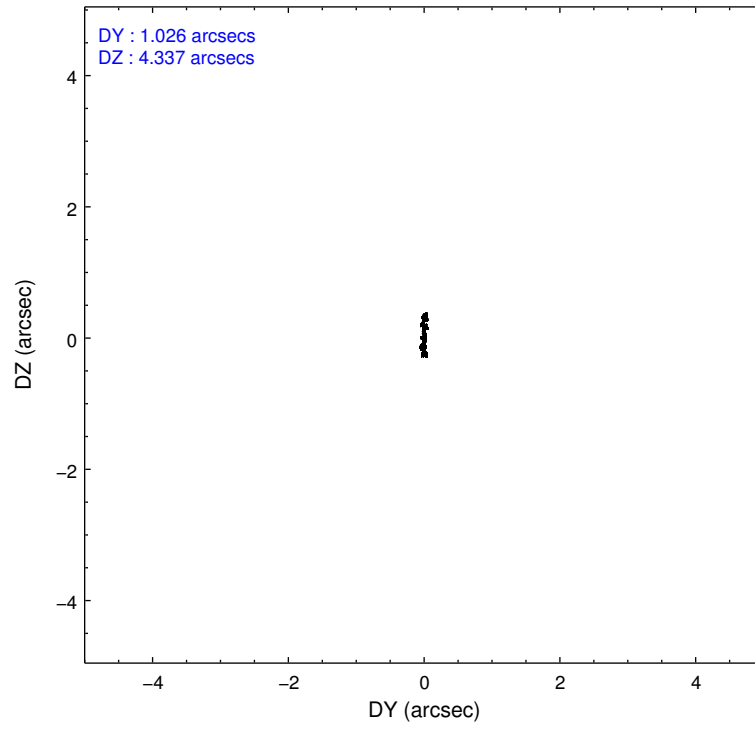
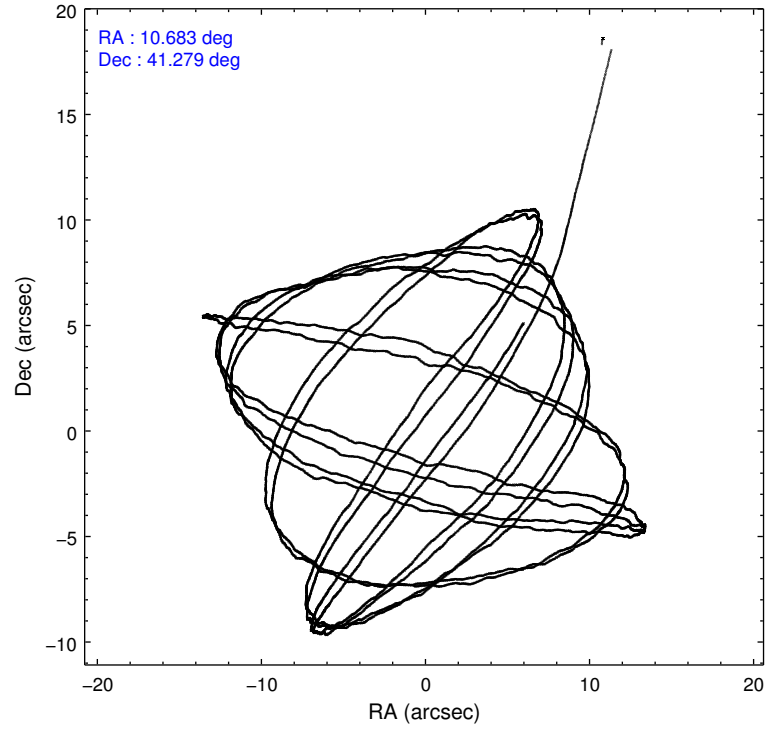
2.1.4 Events

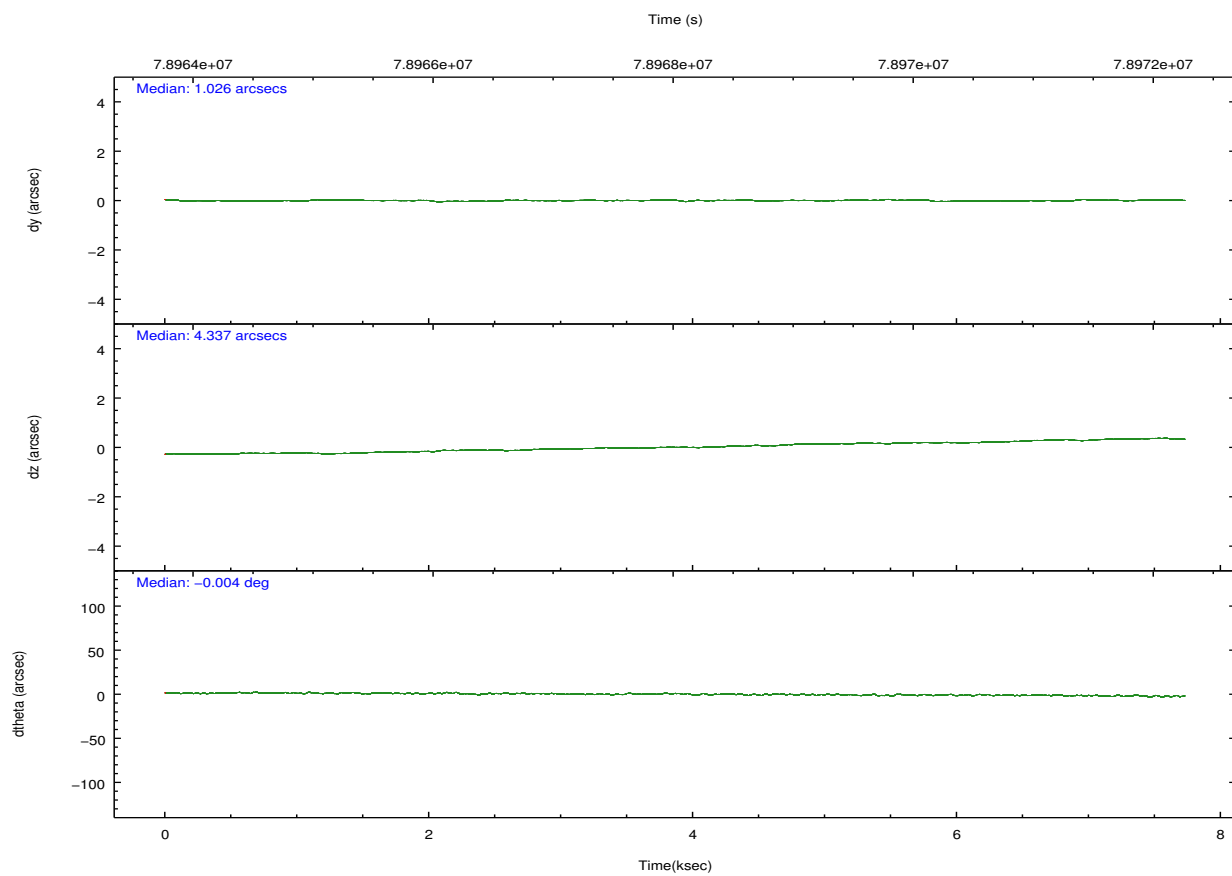
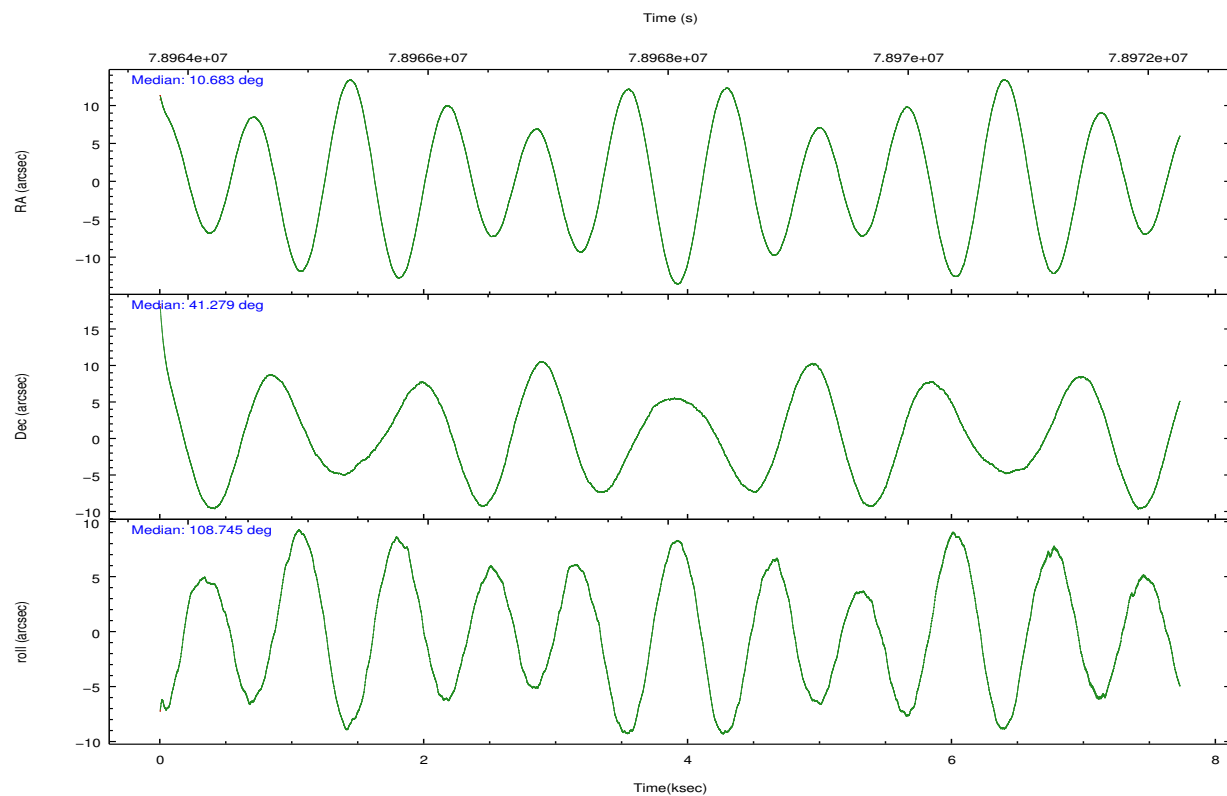
	ccd 2	ccd 3	ccd 5	ccd 6	ccd 7	ccd 8		ccd 2	ccd 3	ccd 5	ccd 6	ccd 7	ccd 8
level 1 events	38081	35843	46573	37530	65289	45497	grade 0 events	1869	2474	2939	2563	8405	3040
rejected events	34092	31306	25572	32744	27768	36966		4%	6%	6%	6%	12%	6%
rejected %	89%	87%	54%	87%	42%	81%	grade 1 events	15	25	99	17	133	28
								0%	0%	0%	0%	0%	0%
							grade 2 events	838	813	6095	880	8913	1929
								2%	2%	13%	2%	13%	4%
							grade 3 events	367	412	1001	419	4072	829
								0%	1%	2%	1%	6%	1%
							grade 4 events	383	359	924	436	4140	821
								1%	1%	1%	1%	6%	1%
							grade 5 events	1156	1225	3506	1361	4513	1715
								3%	3%	7%	3%	6%	3%
							grade 6 events	673	668	10883	735	13362	2199
								1%	1%	23%	1%	20%	4%
							grade 7 events	32780	29867	21126	31119	21751	34936
								86%	83%	45%	82%	33%	76%

2.2 Compared Parameters

Parameter	Planned	Actual	Parameter	Planned	Actual
Instrument	ACIS	ACIS	Obspar format version number	7	7
Detector	ACIS-235678	ACIS-235678	Obspar file type	PREDICTED	ACTUAL
Grating	NONE	NONE	Obspar update status	NONE	UPDATED
Data mode	FAINT	FAINT	Number of optional ACIS chips dropped	0	0
Observation mode	POINTING	POINTING	On-chip summing requested	N	N
[deg] Pointing RA	10.710622	10.68311139622449	Subarray requested	NONE	NONE
[deg] Pointing Dec	41.260857	41.27875918458096	Alternating exposures requested	N	N
[deg] Pointing Roll	108.575073	108.7498519377658	[s] Primary exposure time	0.000000	3.2
[mm] SIM focus pos	-0.684267	-0.6828225247311905			
[mm] SIM defocus	0	0.001444936568705701			
[mm] SIM translation stage pos	-190.132523	-190.1425803651734			
[mm] SIM translation stage offset	0	0.01005778216563158			
[s] Observation start time (MET)	78964301.184000	78963152.670884			
Observation start date	2000-07-02T22:30:37	2000-07-02T22:12:32			
[s] Observation end time (MET)	78969301.184000	78972985.49624699			
Observation end date	2000-07-02T23:53:57	2000-07-03T00:56:25			
Read mode	TIMED	TIMED			

2.3 Aspect



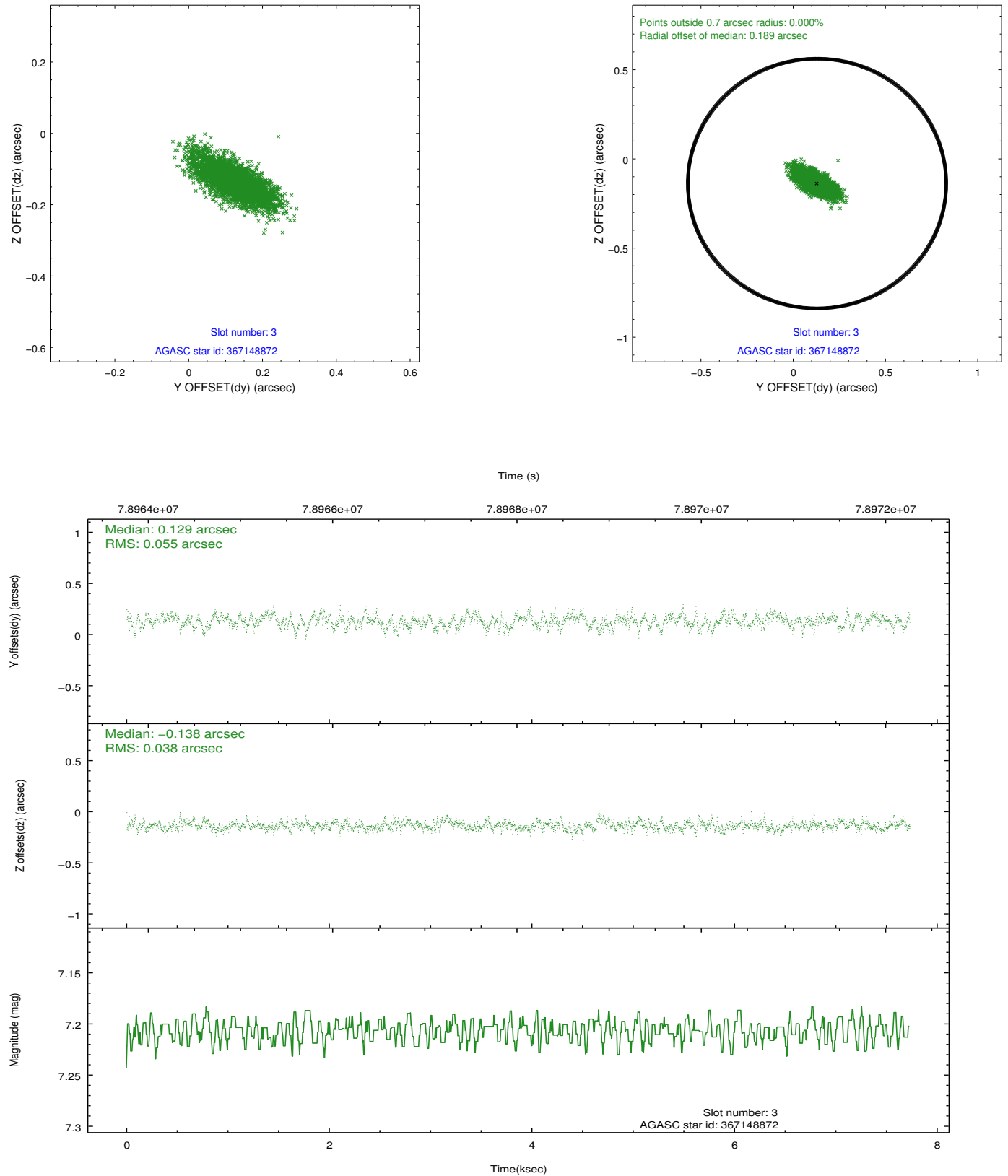


Slot Statistics

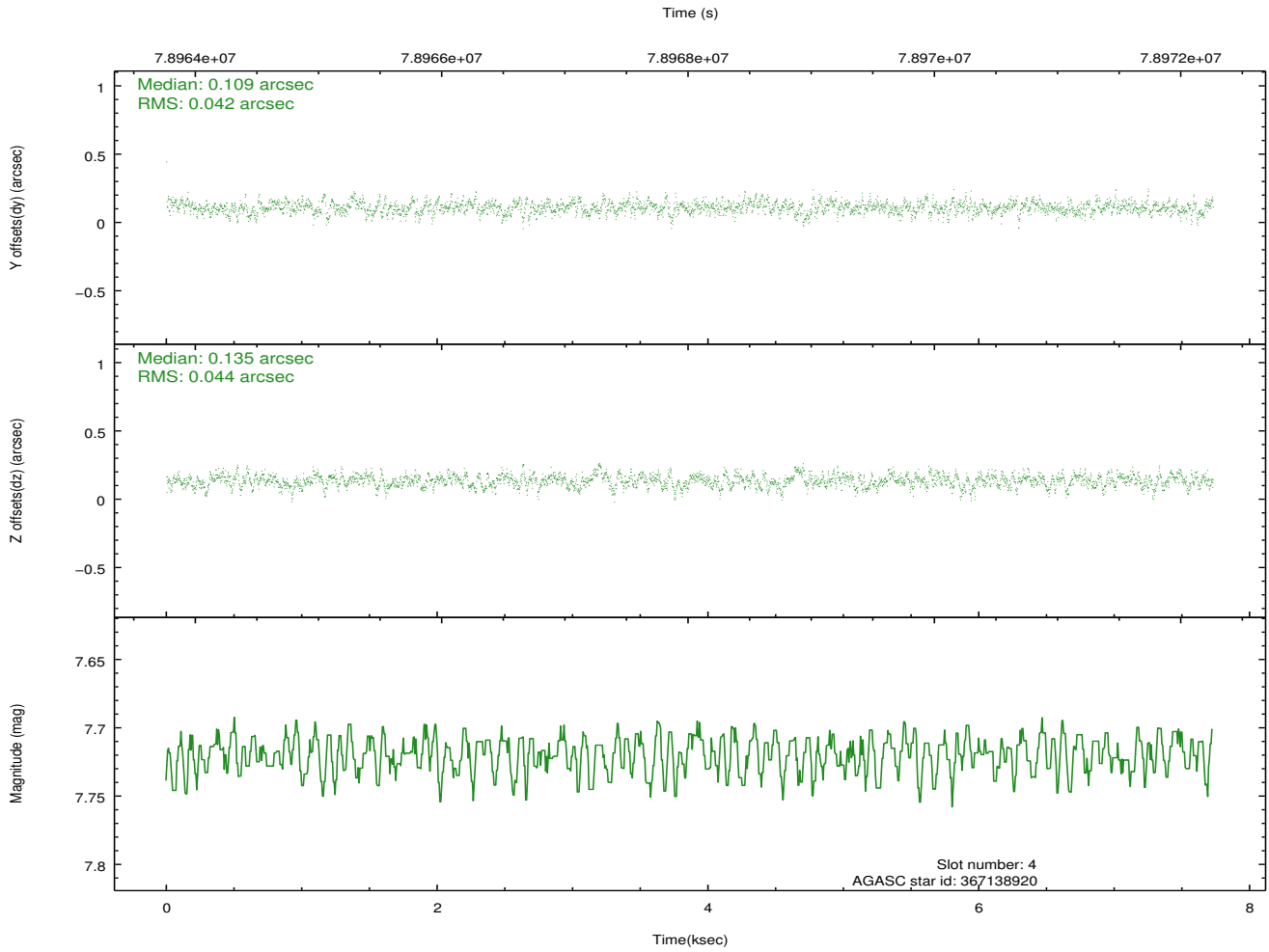
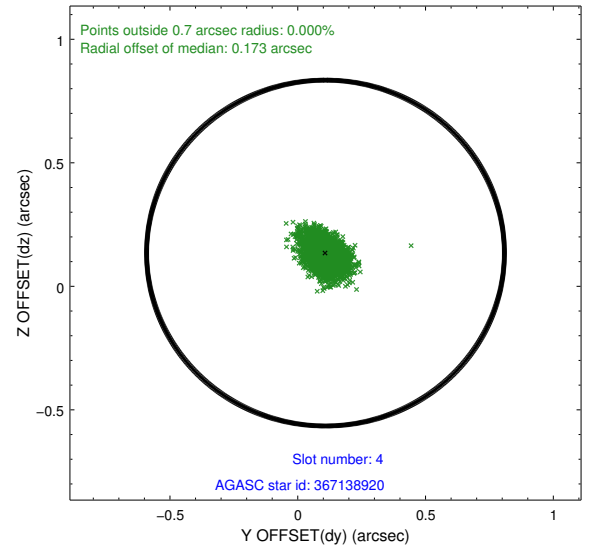
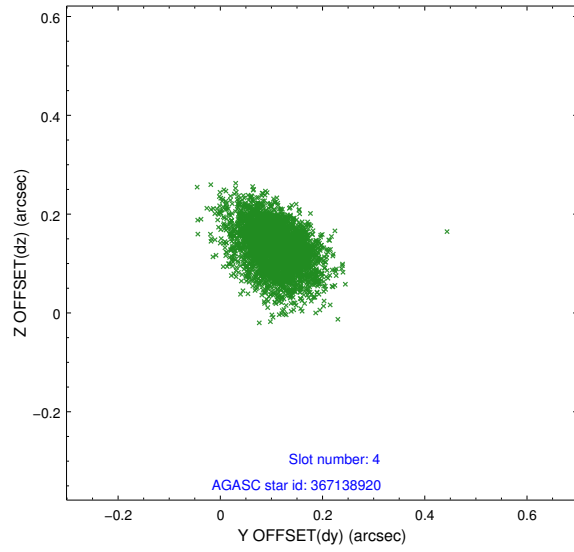
slot	status	id	mag	n_pts	med_dy	med_dz	dr1	dr2	ra	dec	mean_y	mean_z
0	BAD	ACIS-S-3	7.19	1886	882.801	133.542	0.020	0.030	0.000000	0.000000	942.37	-1720.92
1	FID	ACIS-S-4	7.21	1886	-0.013	0.005	0.005	0.009	0.000000	0.000000	2160.22	182.32
2	FID	ACIS-S-5	7.24	1886	-0.009	0.005	0.005	0.009	0.000000	0.000000	-1805.52	176.86
3	GUIDE	367148872	7.21	3771	0.129	-0.138	0.067	0.126	10.505940	40.688258	-1775.43	1186.03
4	GUIDE	367138920	7.72	3771	0.109	0.135	0.063	0.107	11.513485	40.808909	-2229.95	-1558.24
5	GUIDE	367674552	8.84	3768	-0.047	0.143	0.073	0.128	11.016238	41.570845	796.41	-1136.21
6	GUIDE	367658664	9.59	3765	-0.049	-0.097	0.089	0.152	10.374070	41.369746	662.95	736.31
7	GUIDE	367665472	9.49	3770	-0.139	-0.037	0.093	0.163	10.241611	41.730843	2008.38	654.89

2.4 Star Slots

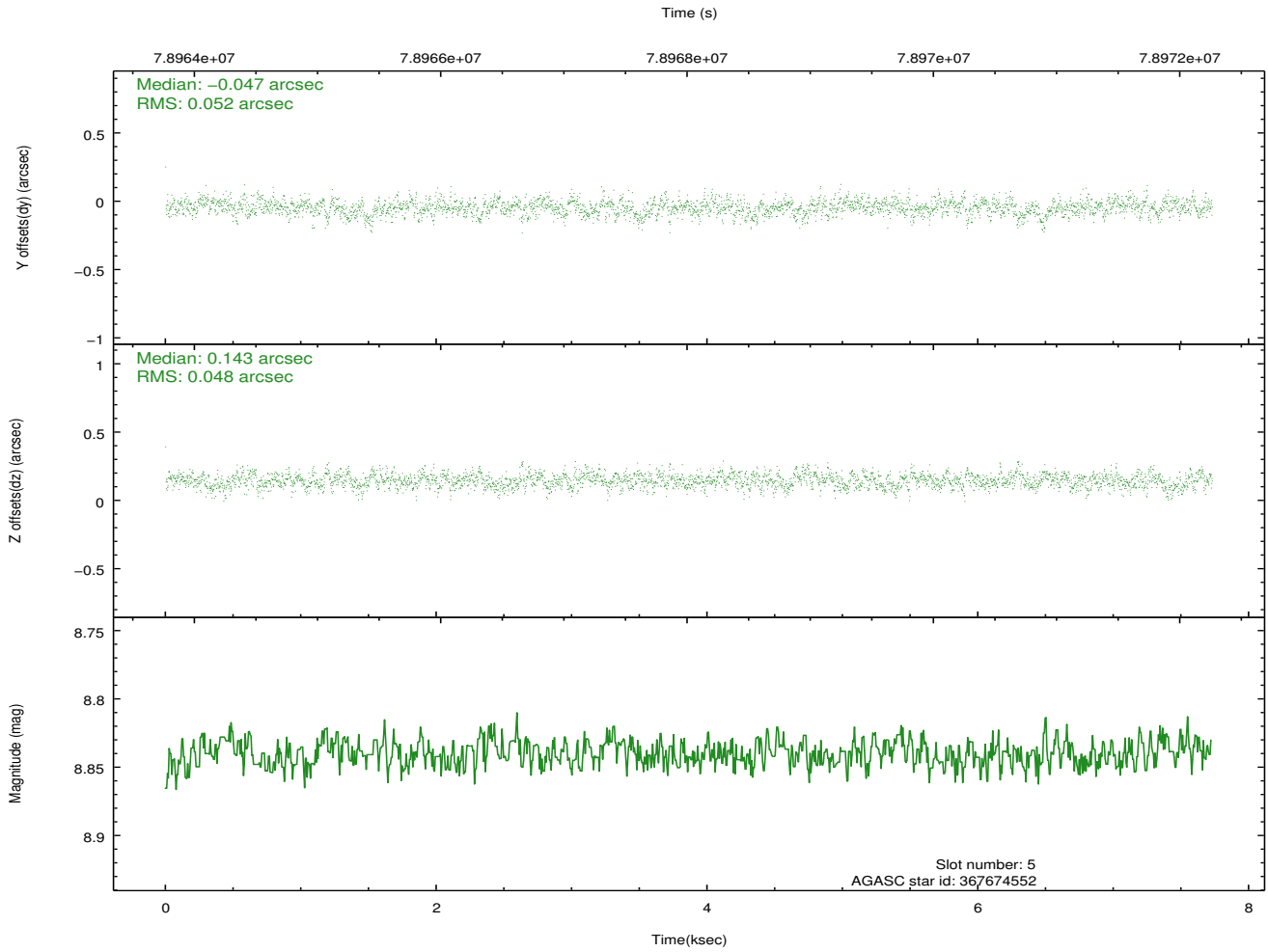
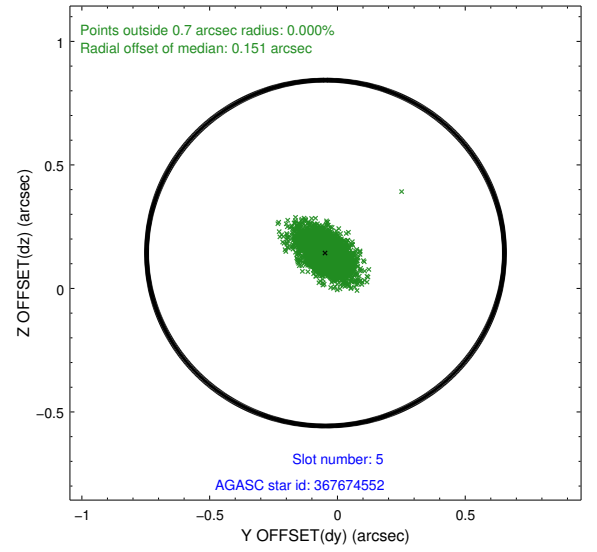
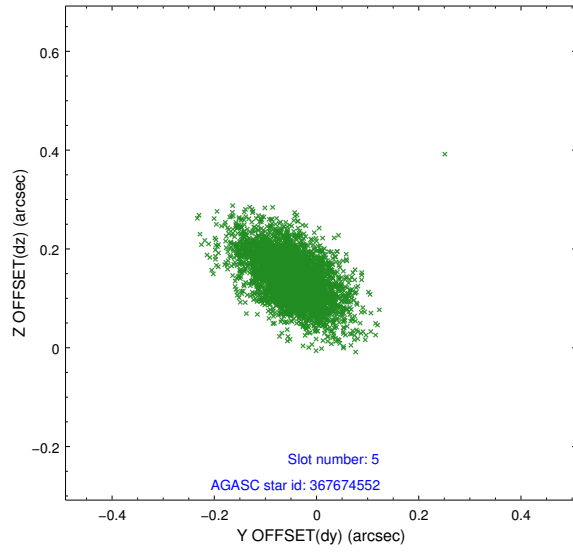
2.4.1 Slot 3



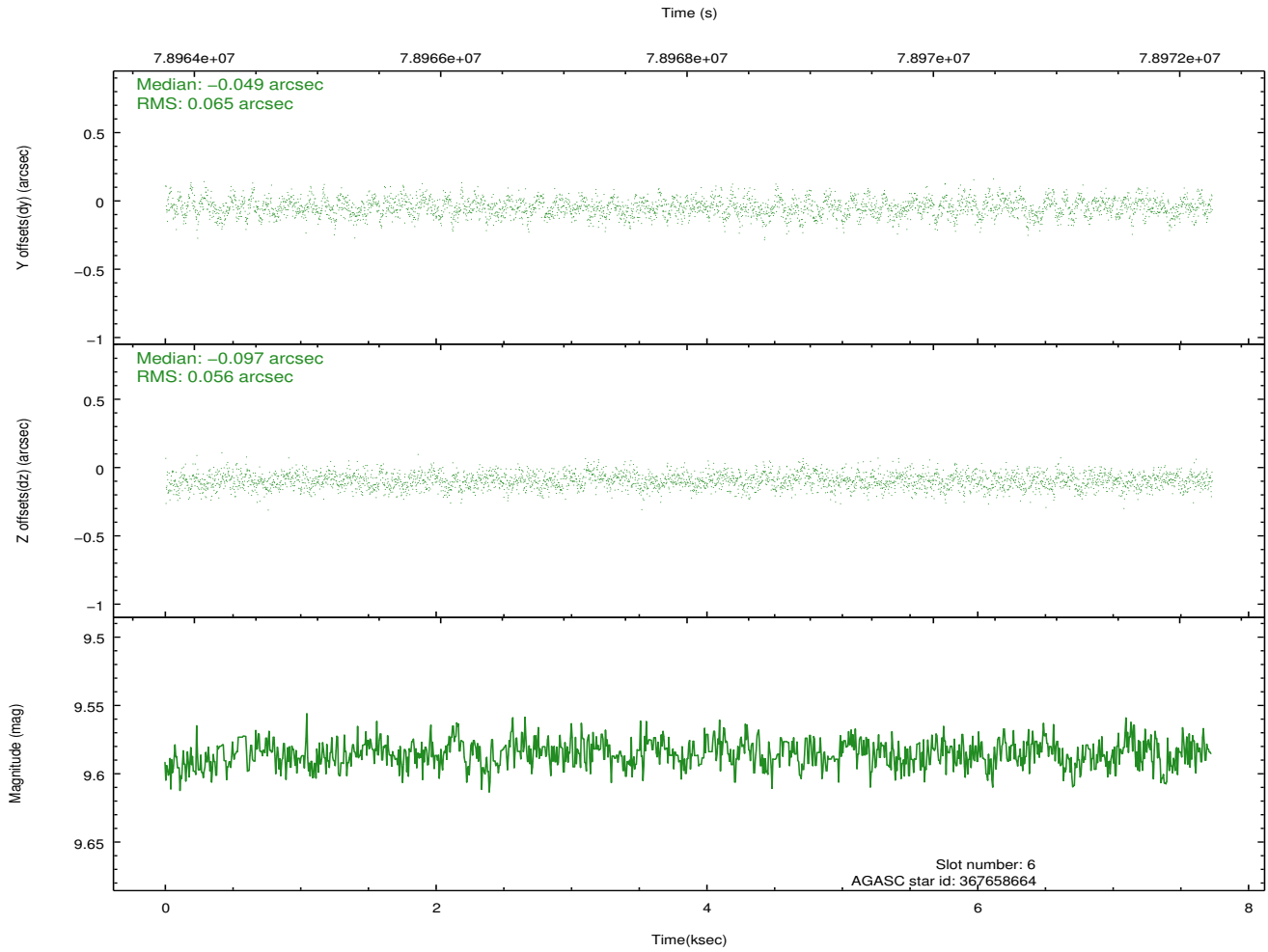
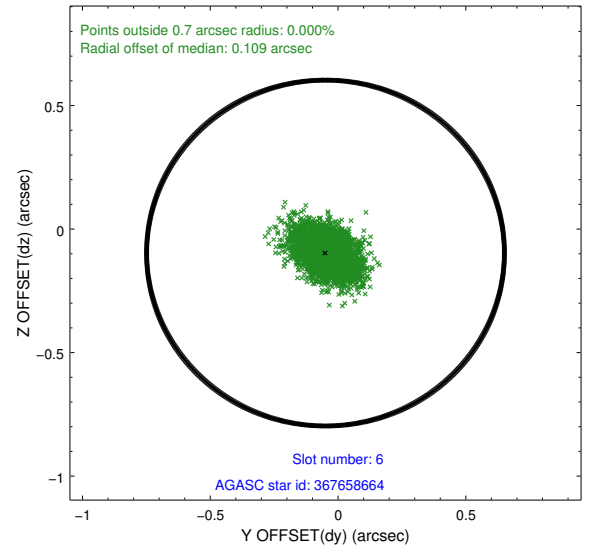
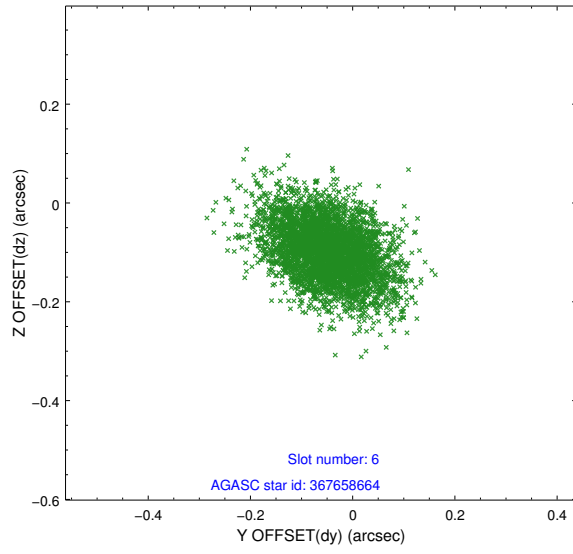
2.4.2 Slot 4



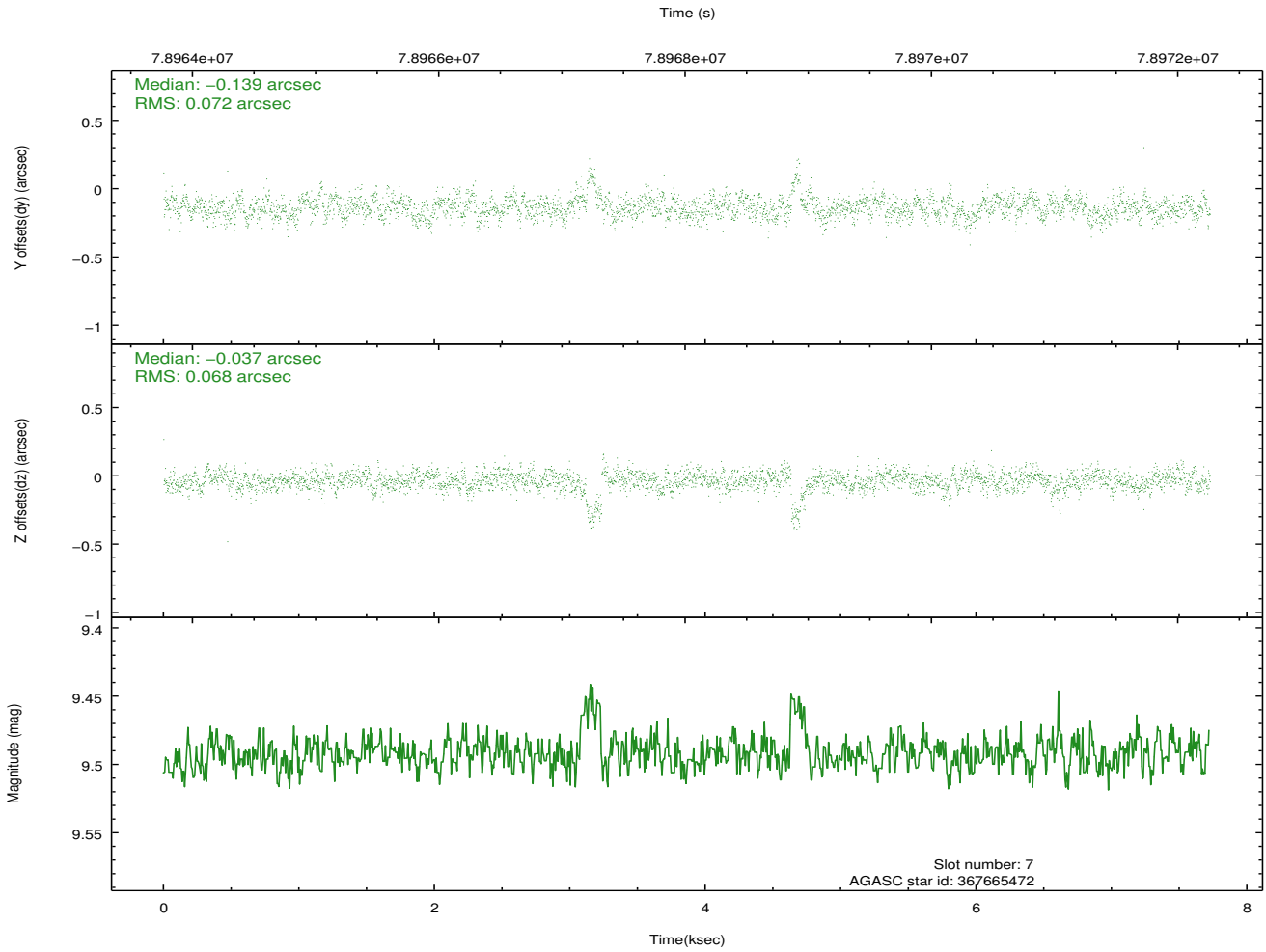
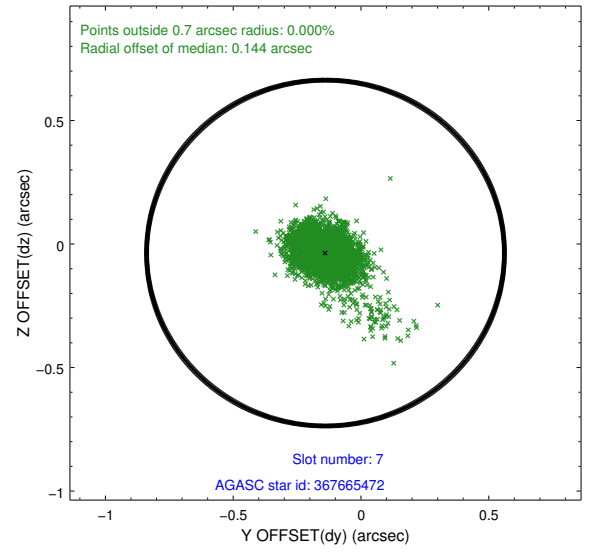
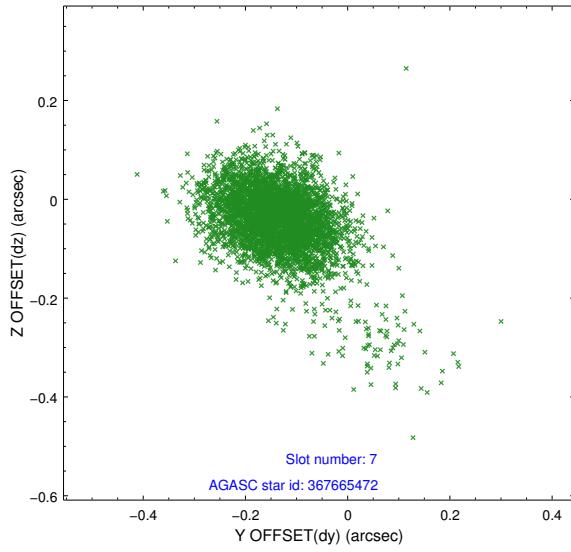
2.4.3 Slot 5



2.4.4 Slot 6

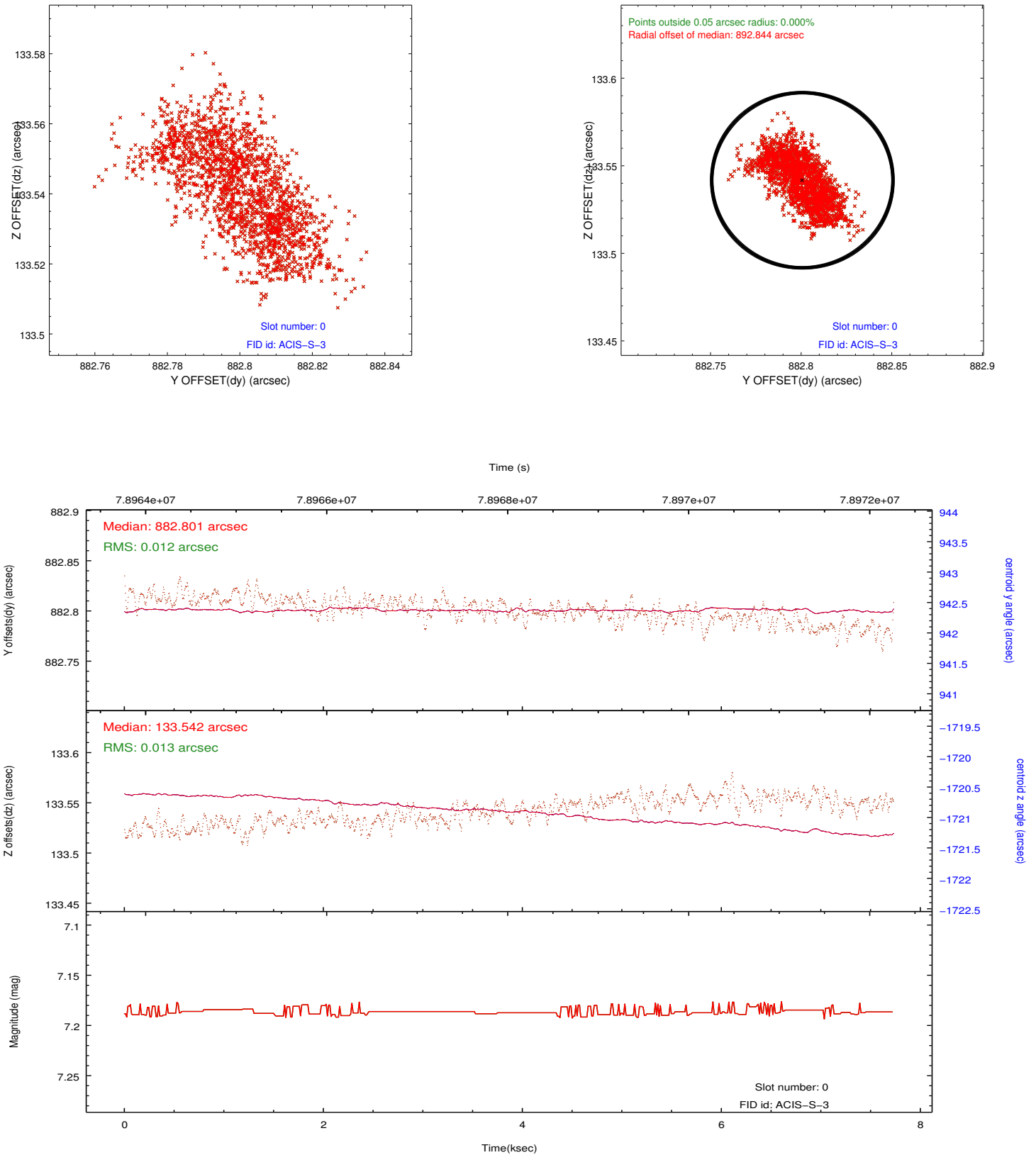


2.4.5 Slot 7

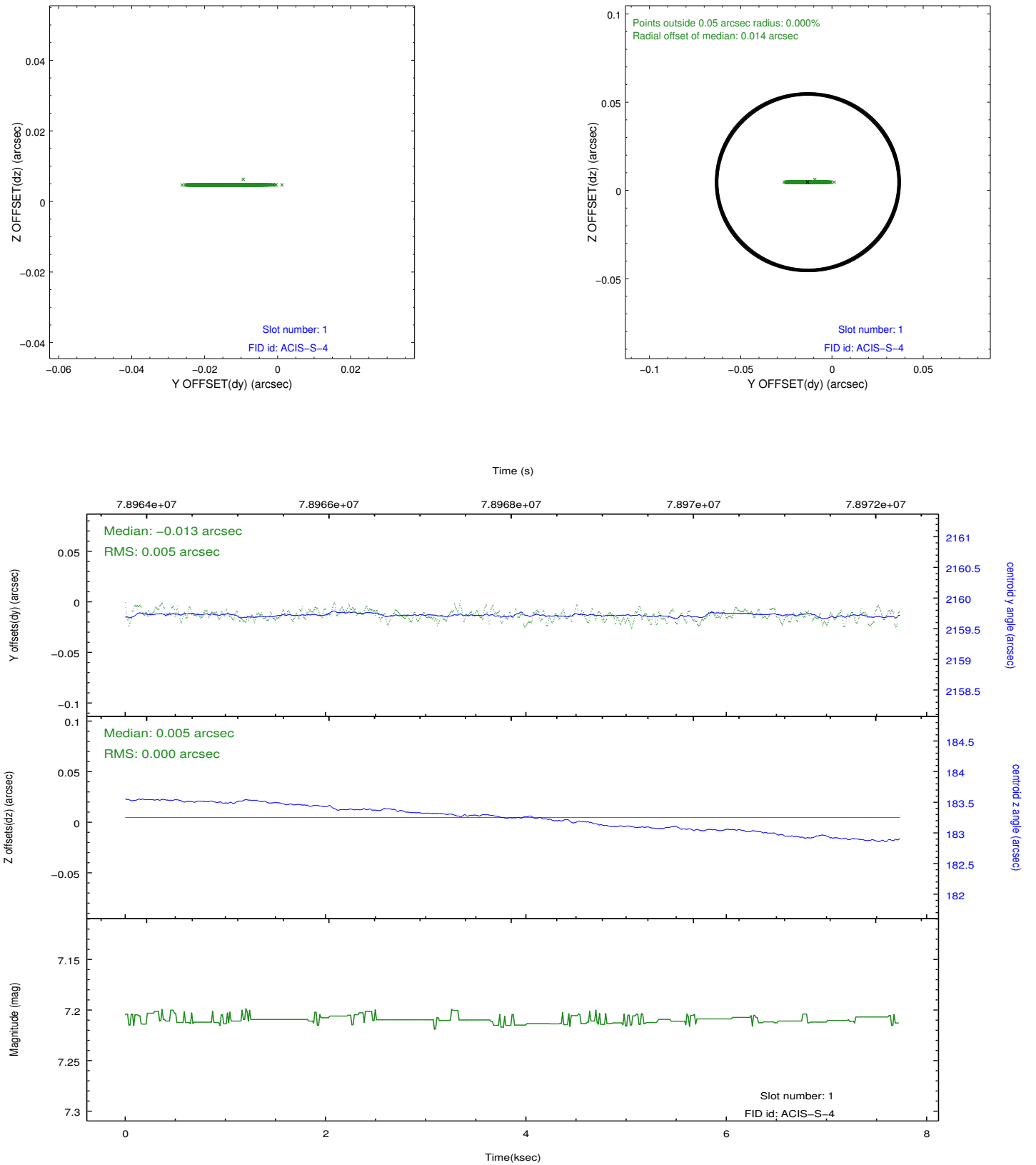


2.5 FID Slots

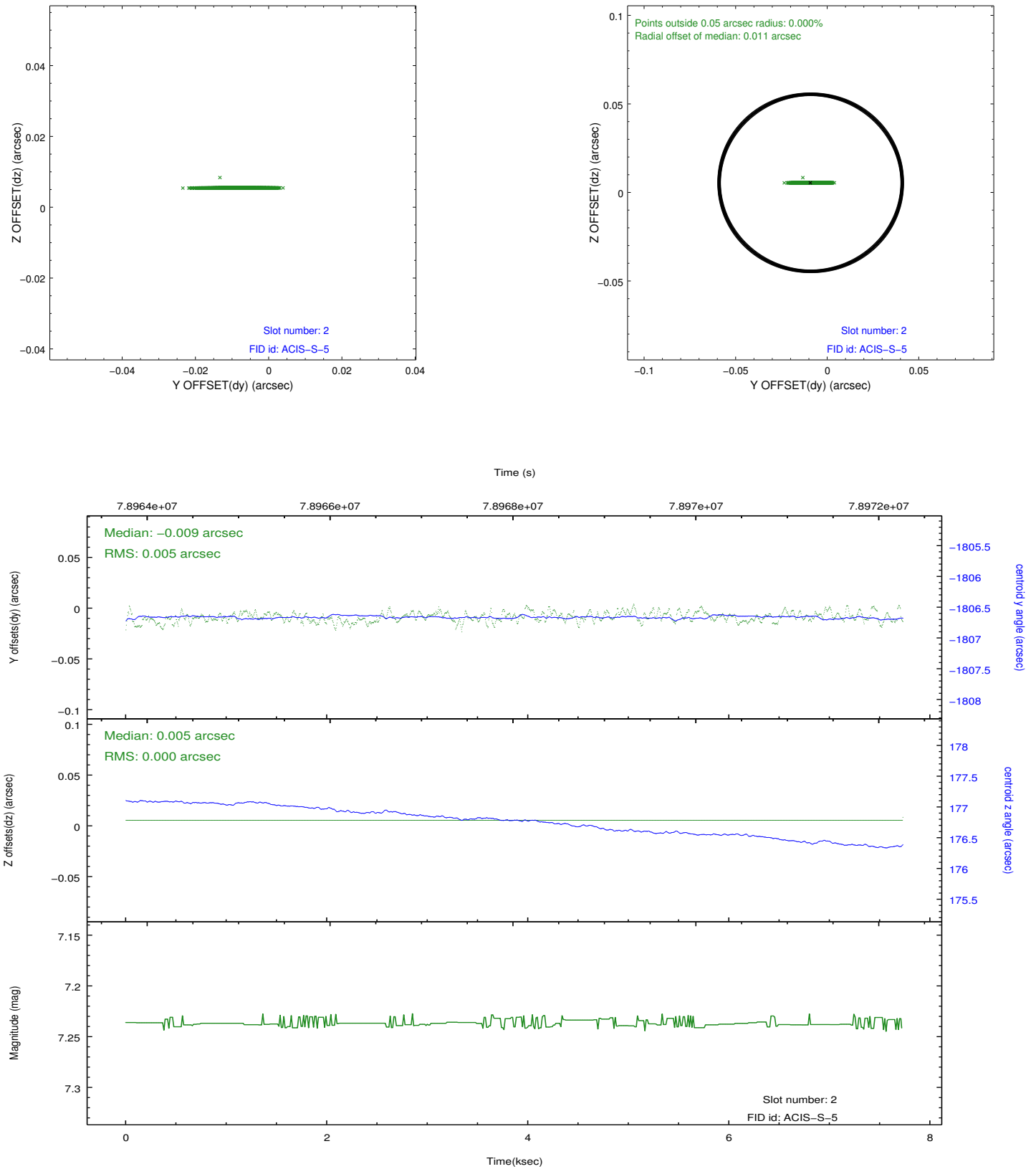
2.5.1 Slot 0



2.5.2 Slot 1



2.5.3 Slot 2



A Summary

A.1 Status

V&V Scientist	Jen Lauer
V&V Date (YYYY-MM-DD)	2012.09.04
V&V Edition	1
V&V Disposition and Status	OK
V&V Charge Time	5.139

A.2 Comments

The fid light in slot 0 was automatically removed from the aspect solution due to poor data quality. The aspect solution is improved by the removal of this fid light from the solution.