

V&V Reference Report

L2 ASCDS Version : 7.6.8.1

Observation 2940 - L2 Version 001
Chandra X-Ray Center

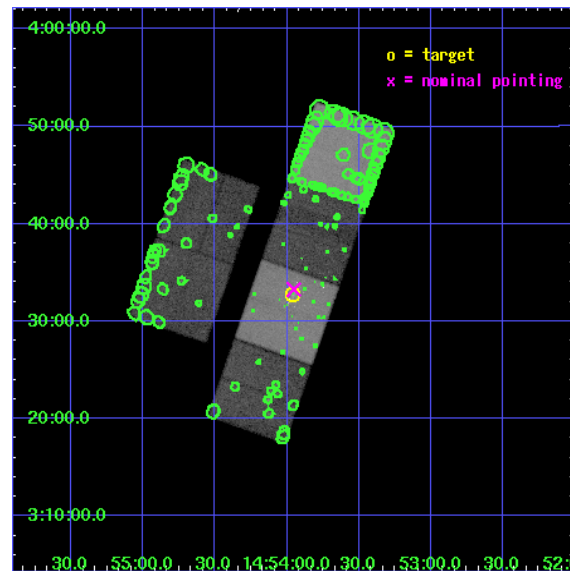
L2 Processing Date : Sep 9 2006

Contents

1	Front	2
2	OBI	3
2.1	OBI	3
2.1.1	Images	3
2.1.2	Bias	3
2.1.3	Parameters	4
2.1.4	Events	4
2.2	Compared Parameters	5
2.3	Aspect	6
2.4	Star Slots	9
2.4.1	Slot 3	9
2.4.2	Slot 4	10
2.4.3	Slot 5	11
2.4.4	Slot 6	12
2.4.5	Slot 7	13
2.5	FID Slots	14
2.5.1	Slot 0	14
2.5.2	Slot 1	15
2.5.3	Slot 2	16
3	Point Sources	17
A	Summary	18
A.1	Status	18
A.2	Comments	18

1 Front

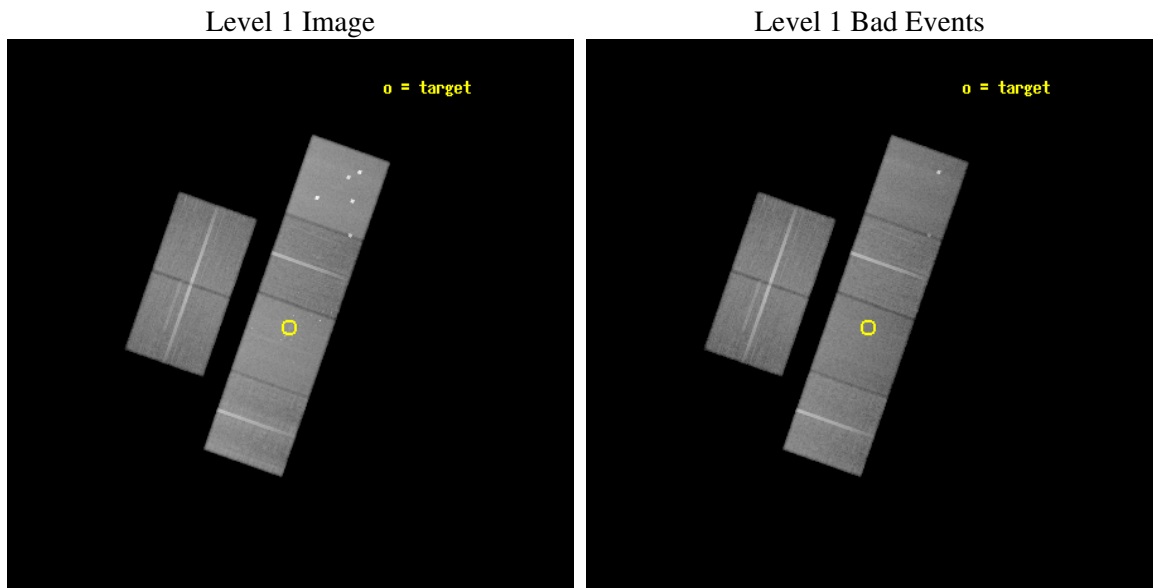
seq_num	600277
obs_id	2940
title	DIFFUSE X-RAY EMISSION IN EDGE-ON DISK GALAXIES: NGC 5775 AND NGC 3044
observer	Dr Philip Maloney
object	NGC 5775
dtcycle	0
cycle	P
ra_targ	223.489583
dec_targ	3.545
ra_nom	223.48804272765
dec_nom	3.5545880849646
roll_nom	109.26841879557
revision	2
ontime	58959.999780357
livetime	58213.412761688
ontime2	58959.999780357
ontime3	58959.995773464
ontime5	58959.999780357
ontime6	58959.999780357
ontime7	58959.999780357
ontime8	58959.954733491
l2events	568158



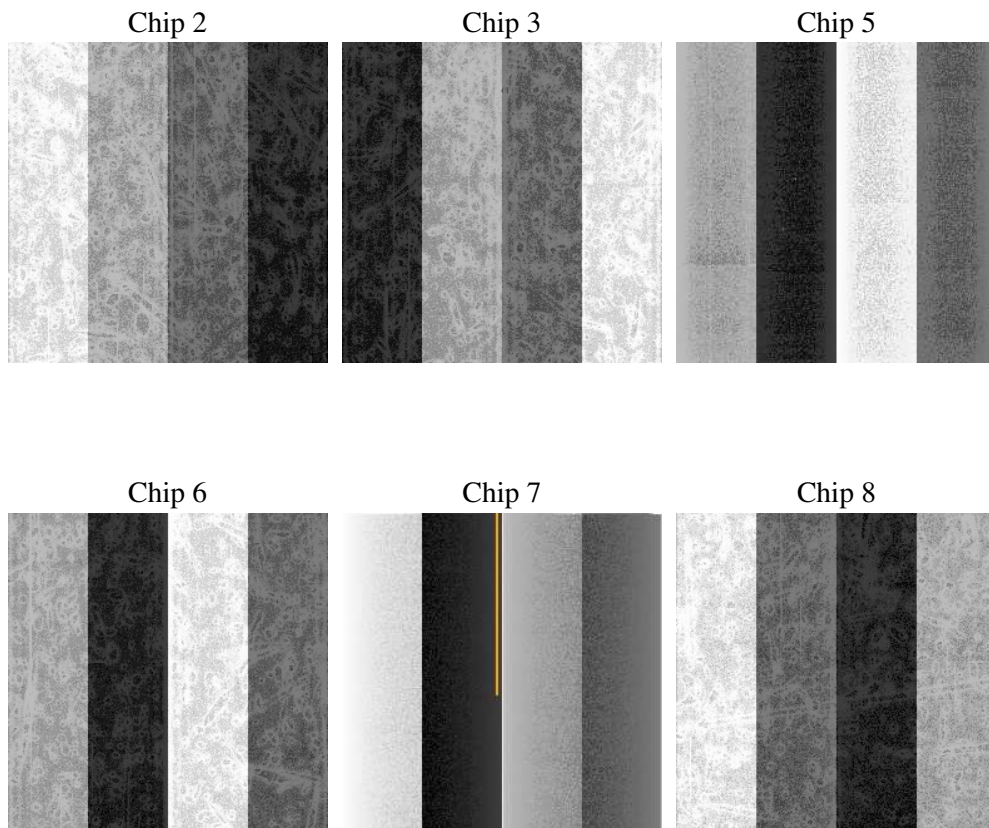
2 OBI

2.1 OBI

2.1.1 Images



2.1.2 Bias



2.1.3 Parameters

obi_num	1
ascdsver	7.6.8.1
caldsver	3.2.3
date	2006-09-09T17:56:11
revision	2

sched_exp_time	59000.000000
ontime	58963.645573914
ontime2	58963.645573914
ontime3	58963.645573914
ontime5	58963.645573914
ontime6	58963.645573914
ontime7	58963.645573914
ontime8	58963.645573914
l1events	2698749

2.1.4 Events

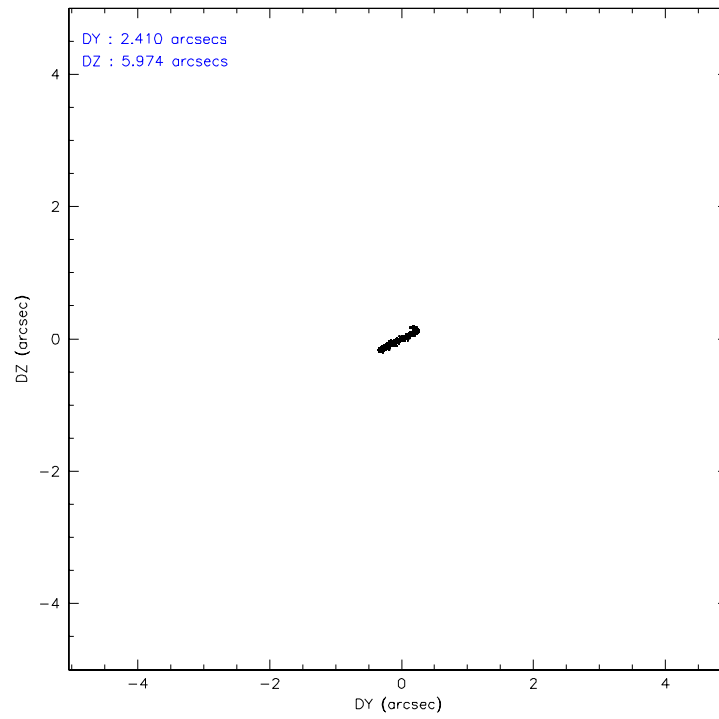
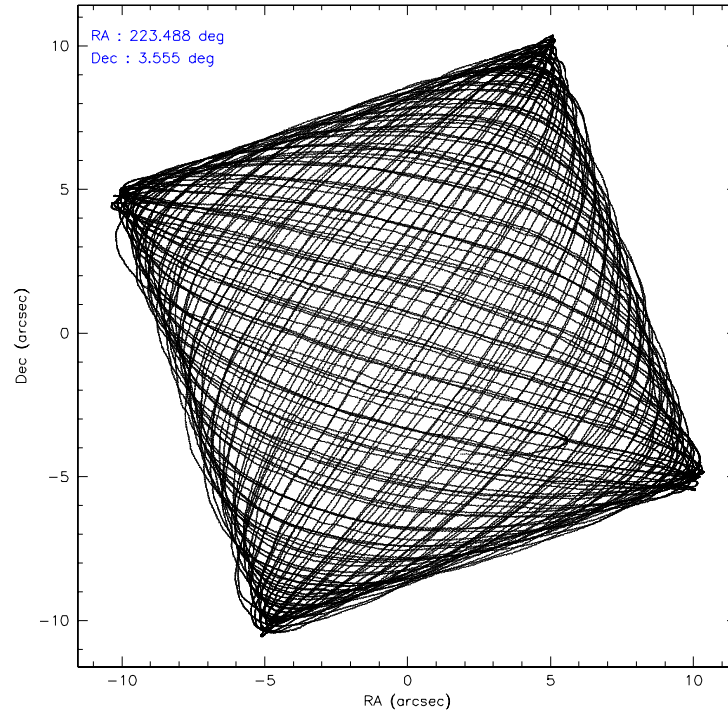
	ccd 2	ccd 3	ccd 5	ccd 6	ccd 7	ccd 8
level 1 events	390121	372561	577727	384865	497412	476063
rejected events	346539	329464	309538	339601	305603	377486
rejected %	88%	88%	53%	88%	61%	79%

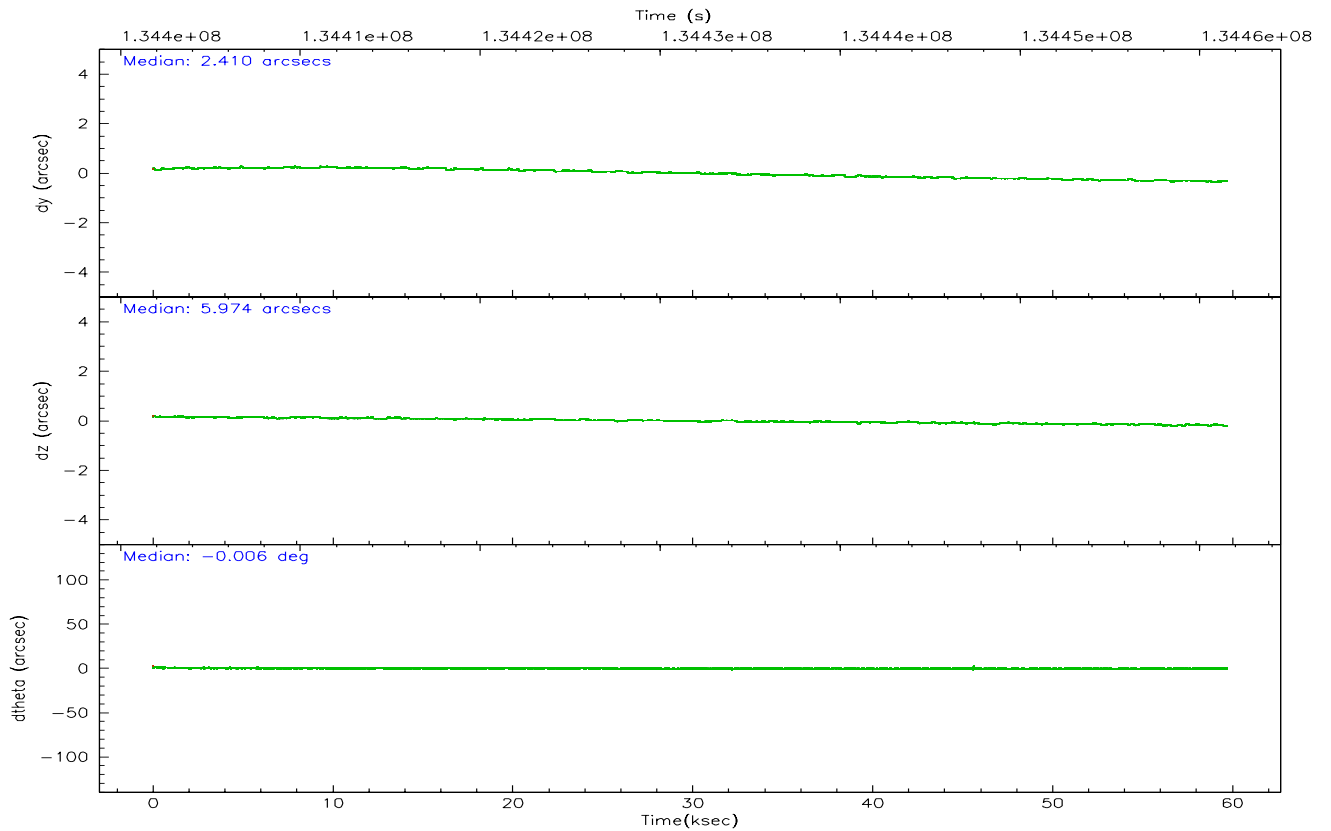
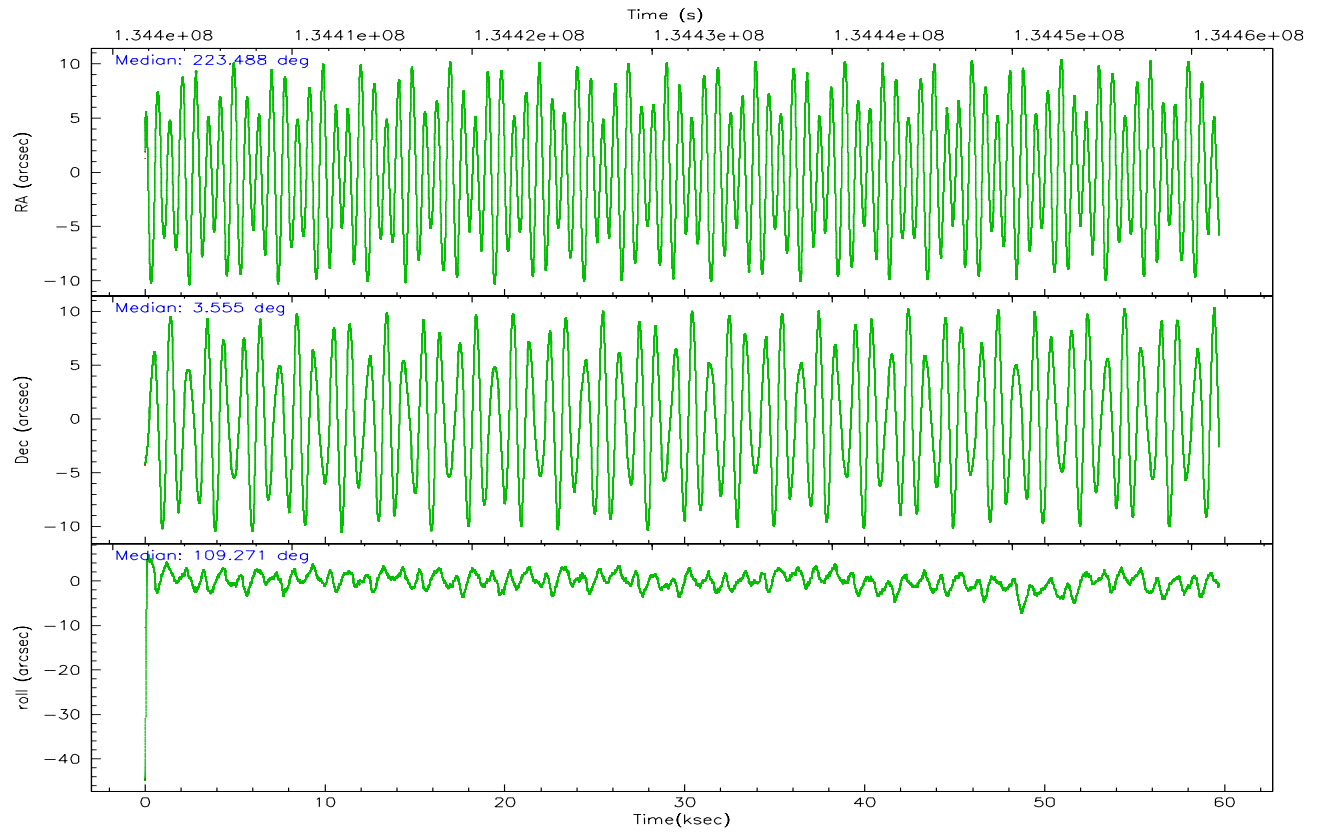
	ccd 2	ccd 3	ccd 5	ccd 6	ccd 7	ccd 8
grade 0 events	18334	18291	46893	18506	13119	31037
	4%	4%	8%	4%	2%	6%
grade 1 events	177	179	1064	177	275	257
	0%	0%	0%	0%	0%	0%
grade 2 events	9456	8715	75051	9166	47019	21174
	2%	2%	12%	2%	9%	4%
grade 3 events	4043	4023	5908	4439	10104	10630
	1%	1%	1%	1%	2%	2%
grade 4 events	4008	4173	5036	4299	9908	9784
	1%	1%	0%	1%	1%	2%
grade 5 events	13732	14884	26960	16715	31603	20956
	3%	3%	4%	4%	6%	4%
grade 6 events	7744	7895	135319	8856	111668	25956
	1%	2%	23%	2%	22%	5%
grade 7 events	332627	314401	281496	322707	273716	356269
	85%	84%	48%	83%	55%	74%

2.2 Compared Parameters

Parameter	Planned	Actual	Parameter	Planned	Actual
Instrument	ACIS	ACIS	Obspar format version number	6	6
Detector	ACIS-235678	ACIS-235678	Obspar file type	PREDICTED	ACTUAL
Grating	NONE	NONE	Obspar update status	NONE	UPDATED
Data mode	FAINT	FAINT	On-chip summing requested	N	N
Observation mode	POINTING	POINTING	Subarray requested	NONE	NONE
Pointing RA	223.508958	223.488042727648	Alternating exposures requested	N	N
Pointing Dec	3.537062	3.554588084964626	Primary exposure time	0.000000	3.2
Pointing Roll	109.110510	109.2684187955683			
SIM focus pos (mm)	-0.684267	-0.6828225247311905			
SIM defocus (mm)	0	0.001444936568705701			
SIM translation stage pos (mm)	-190.132523	-190.1425803651734			
SIM translation stage offset (mm)	0	0.01005778216563158			
Observation start time	134402513.184000	134401294.06677			
Observation start date	2002-04-05T14:00:49	2002-04-05T13:41:34			
Observation end time	134461513.184000	134462674.65676			
Observation end date	2002-04-06T06:24:09	2002-04-06T06:44:34			
Read mode	TIMED	TIMED			

2.3 Aspect



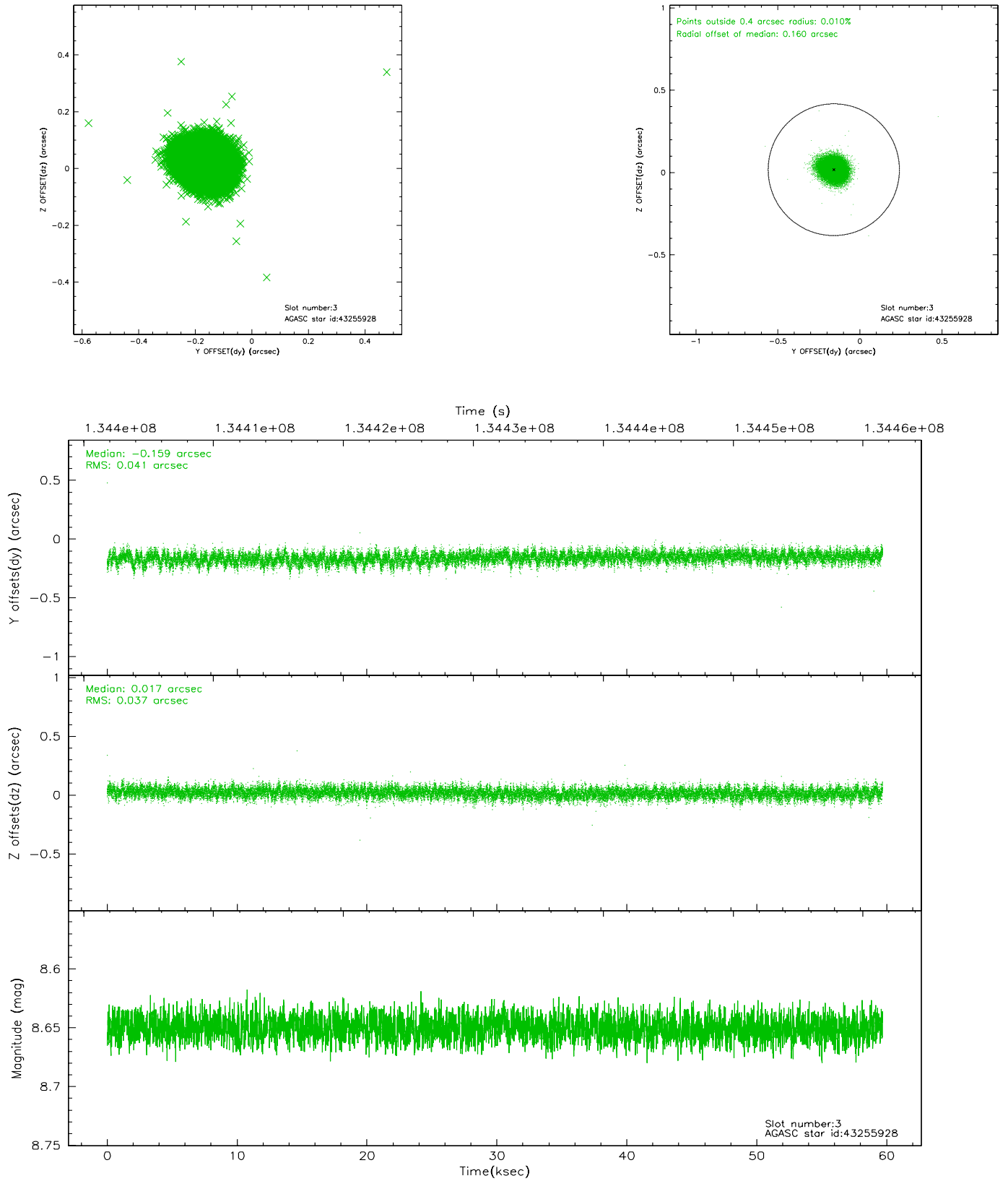


Slot Statistics

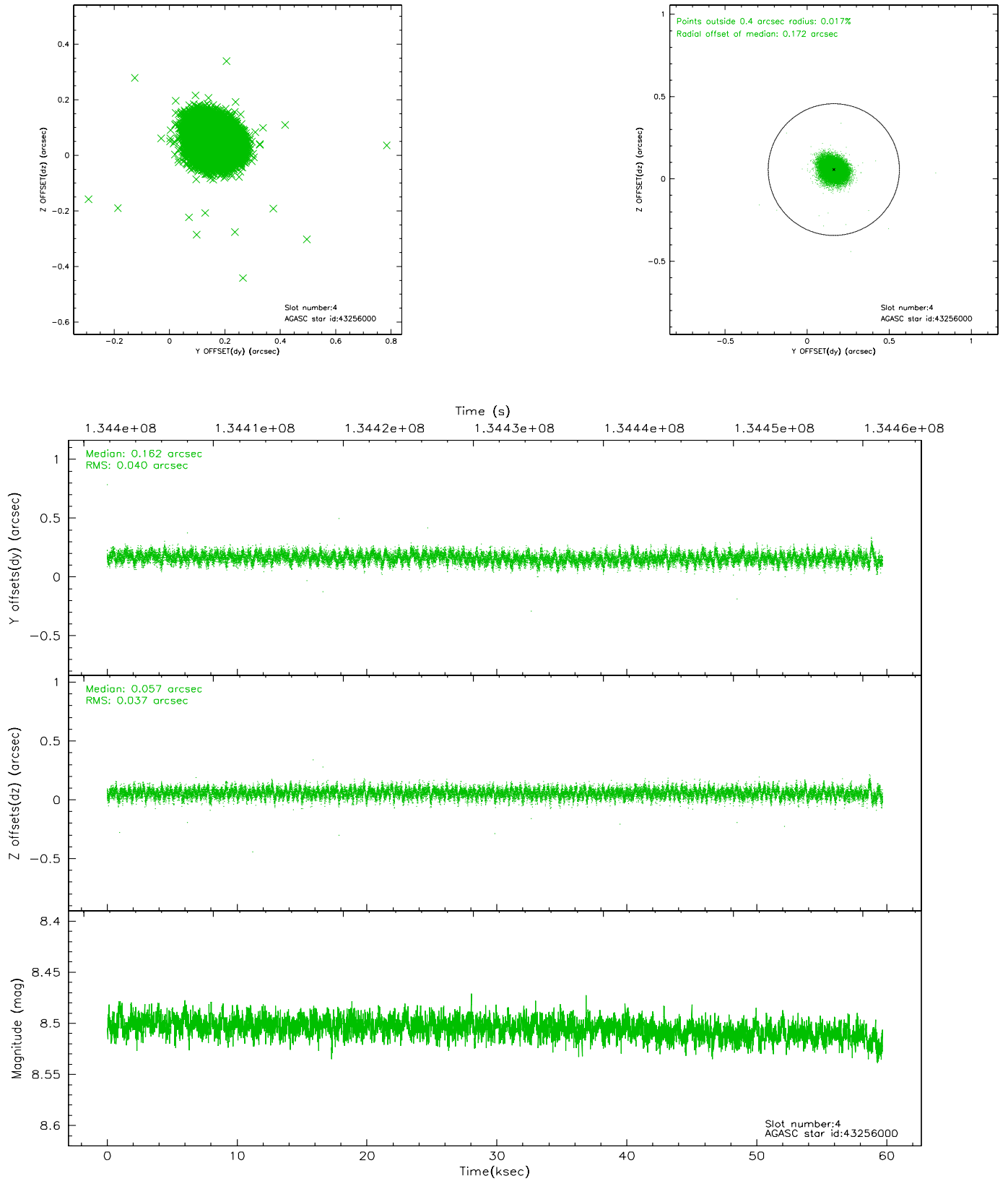
slot	status	id	mag	n_pts	med_dy	med_dz	dr1	dr2	ra	dec	mean_y	mean_z
0	FID	ACIS-S-2	7.12	14562	-0.034	0.027	0.015	0.022	0.000000	0.000000	-755.01	-1727.05
1	FID	ACIS-S-4	7.21	14562	-0.052	0.010	0.021	0.029	0.000000	0.000000	2158.21	181.53
2	FID	ACIS-S-5	7.24	14562	0.060	-0.027	0.010	0.015	0.000000	0.000000	-1807.86	175.01
3	GUIDE	43255928	8.65	29122	-0.159	0.017	0.058	0.095	223.647948	3.841975	873.50	-832.04
4	GUIDE	43256000	8.50	29123	0.162	0.057	0.056	0.094	223.726531	2.990075	-2116.53	-95.14
5	GUIDE	43266064	9.72	29100	-0.119	-0.075	0.103	0.165	223.060340	3.938615	1893.59	1047.98
6	GUIDE	43265200	9.32	29108	0.180	-0.110	0.082	0.134	223.622876	2.898220	-2307.01	365.16
7	GUIDE	43266080	9.89	28703	-0.066	0.109	0.139	0.223	223.674241	3.883064	982.45	-969.51

2.4 Star Slots

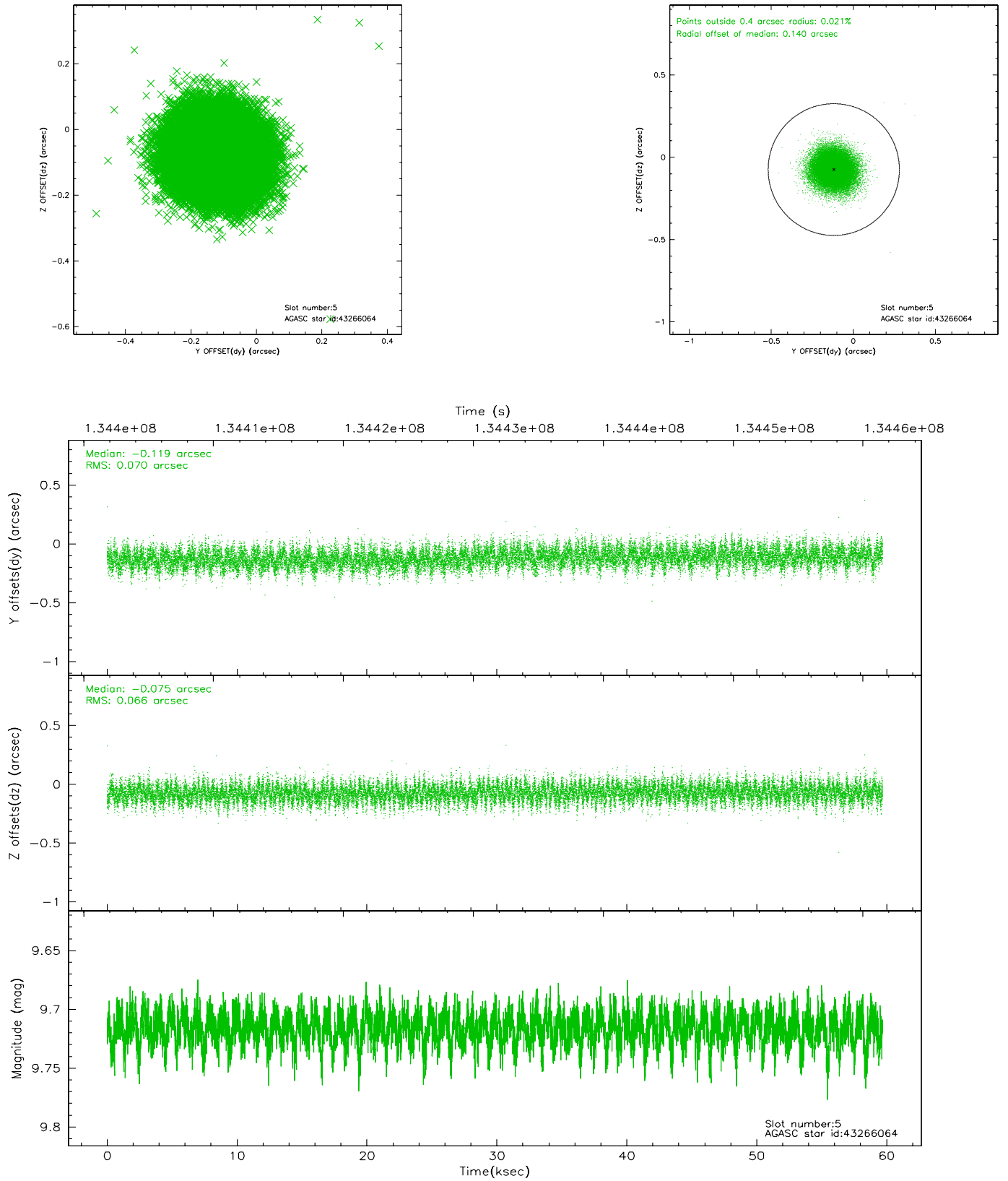
2.4.1 Slot 3



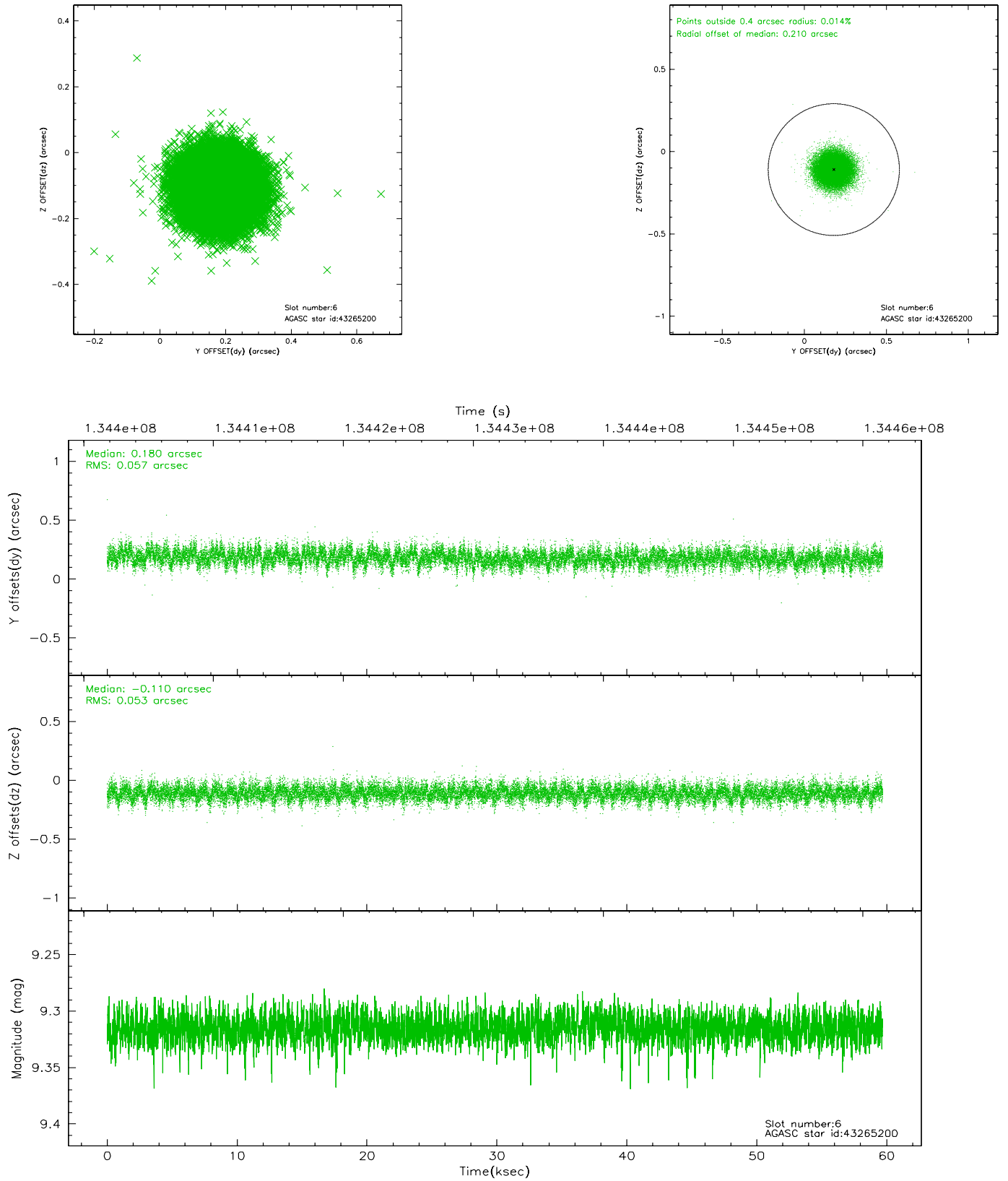
2.4.2 Slot 4



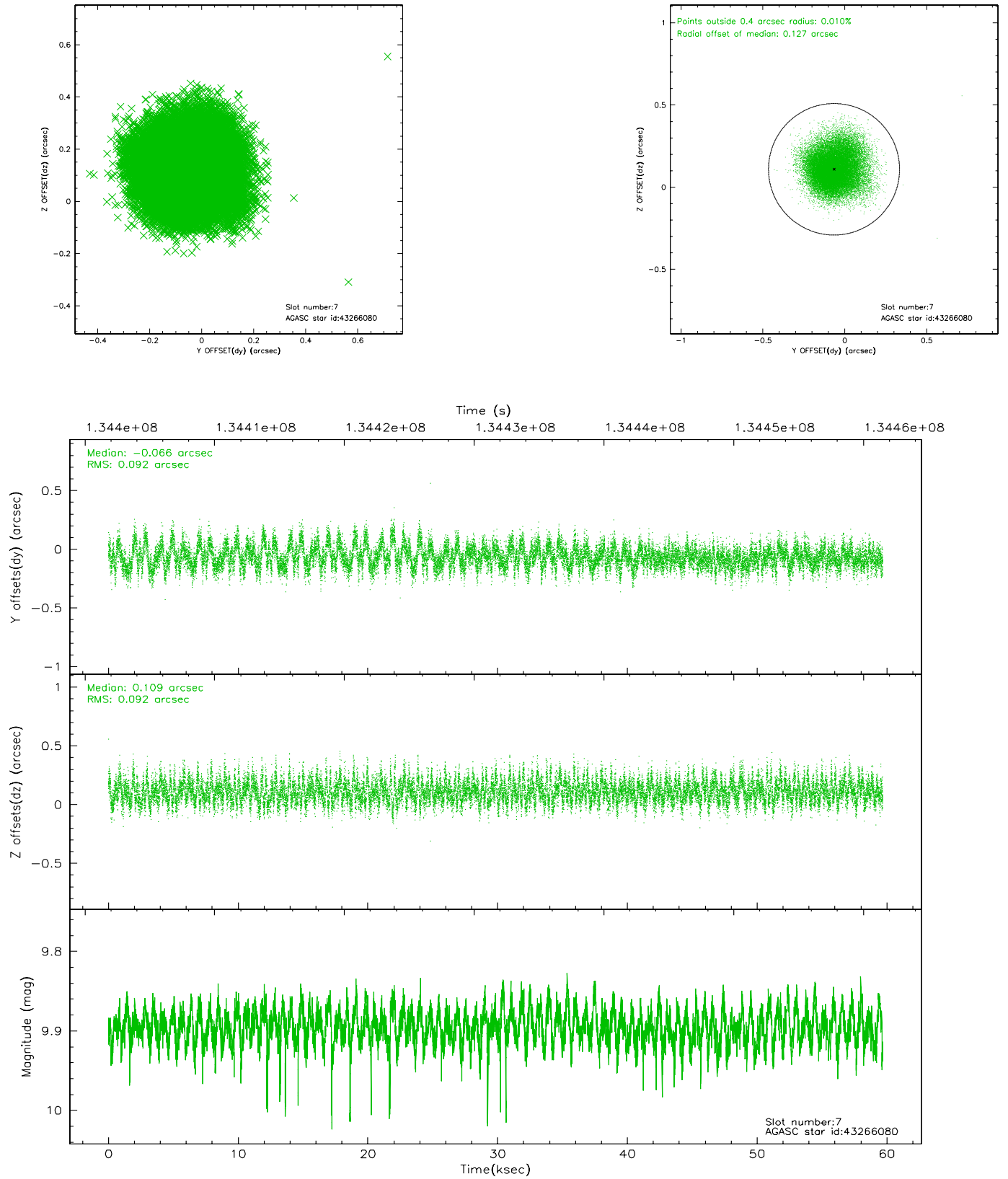
2.4.3 Slot 5



2.4.4 Slot 6

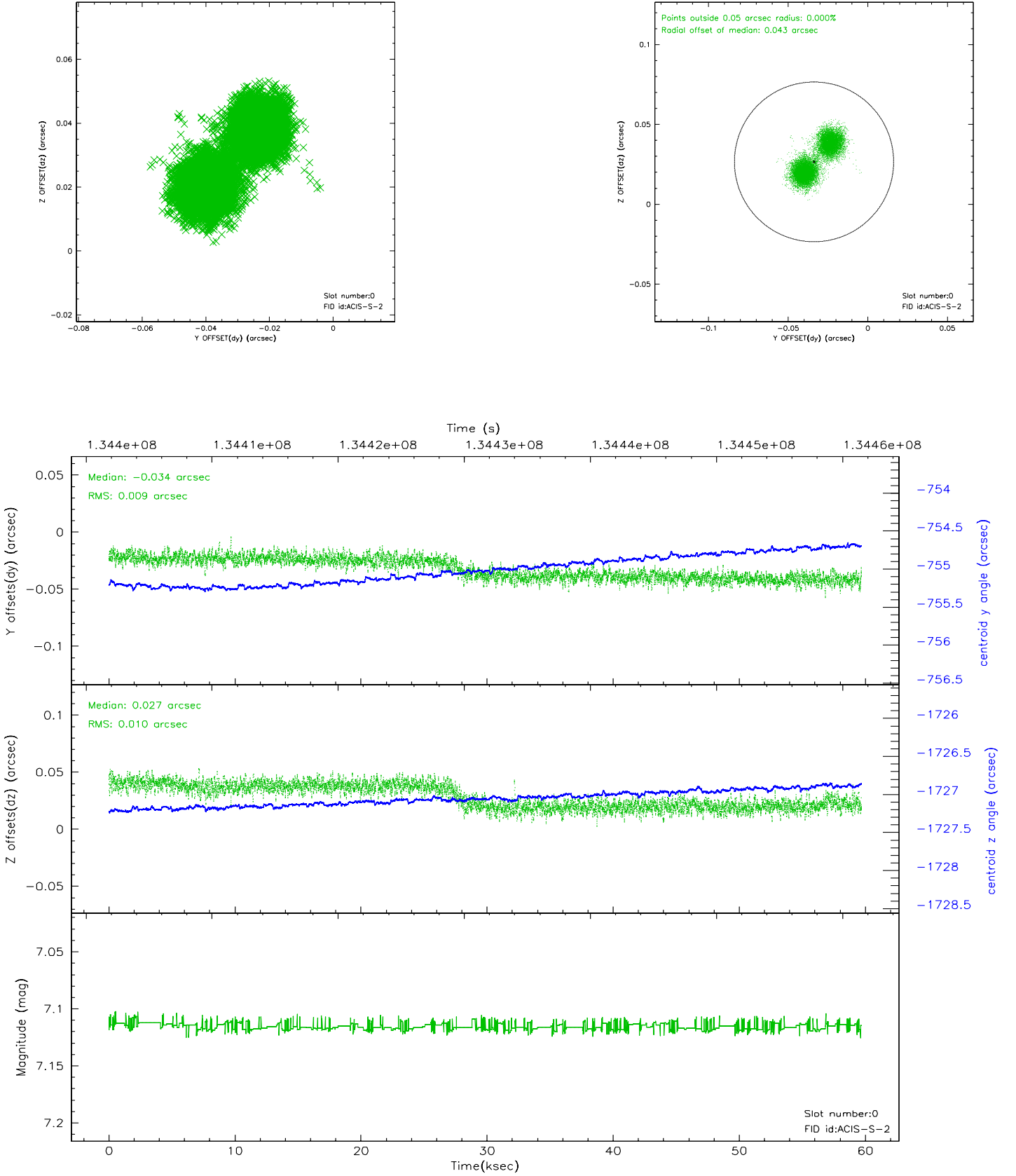


2.4.5 Slot 7

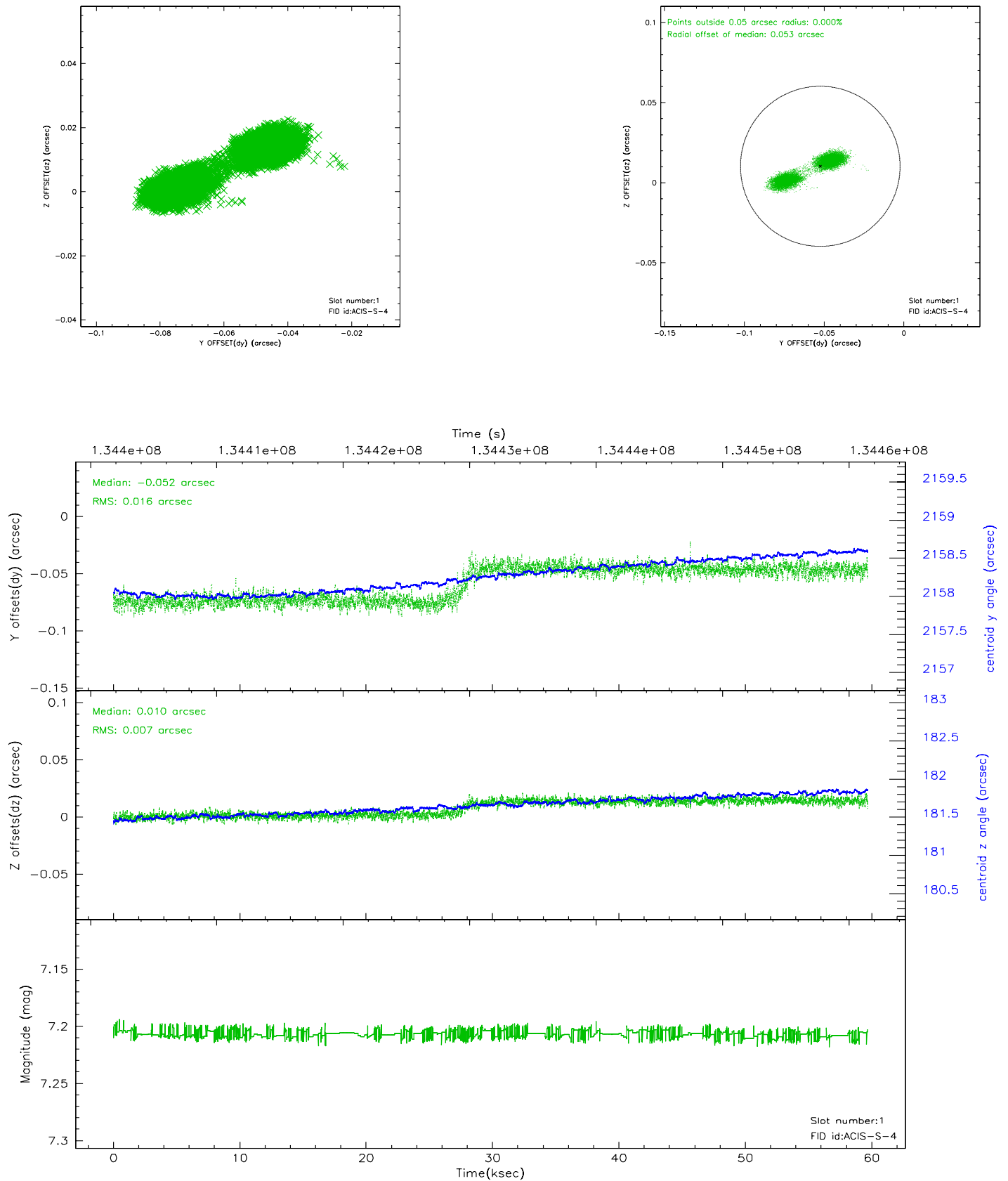


2.5 FID Slots

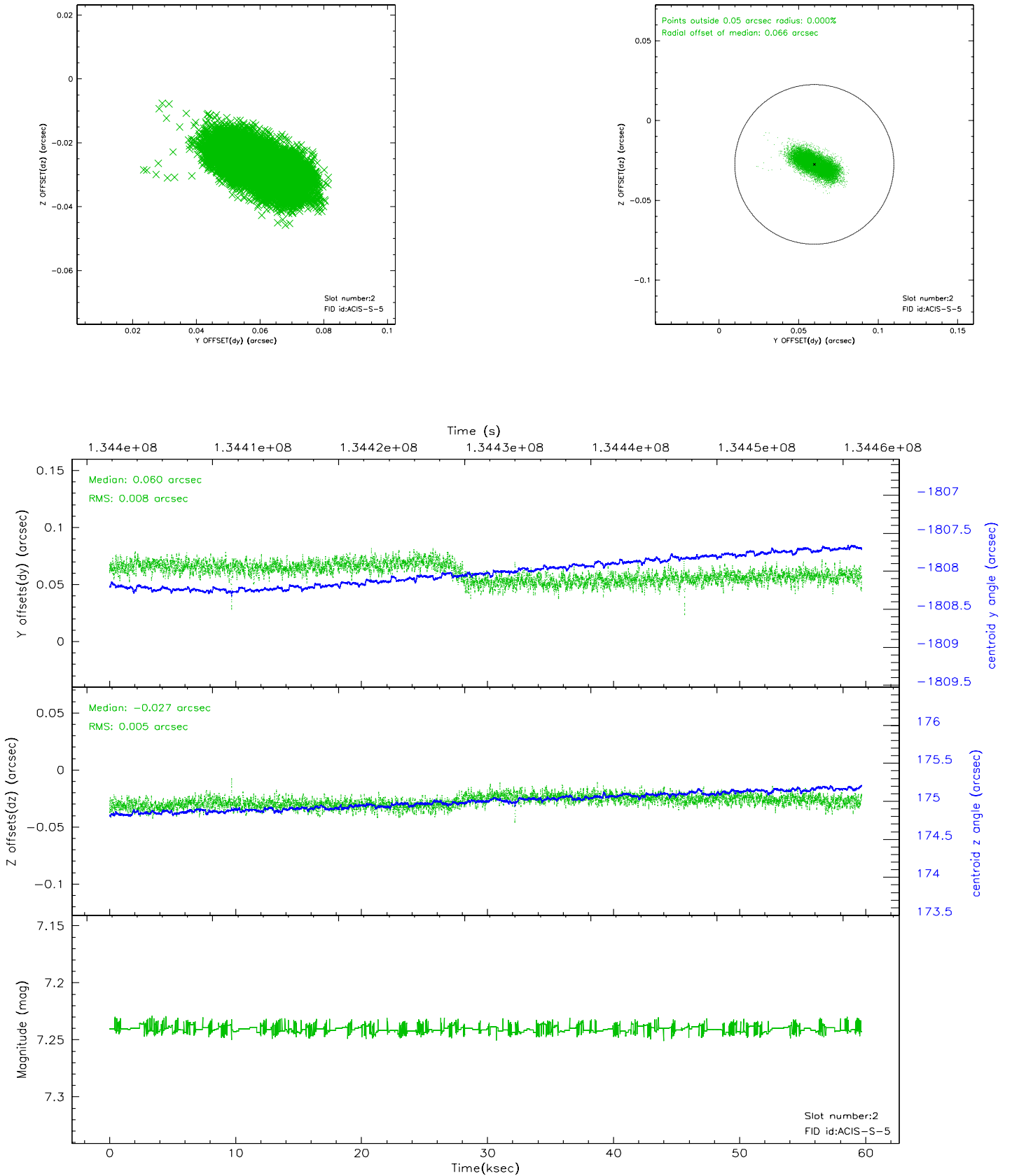
2.5.1 Slot 0



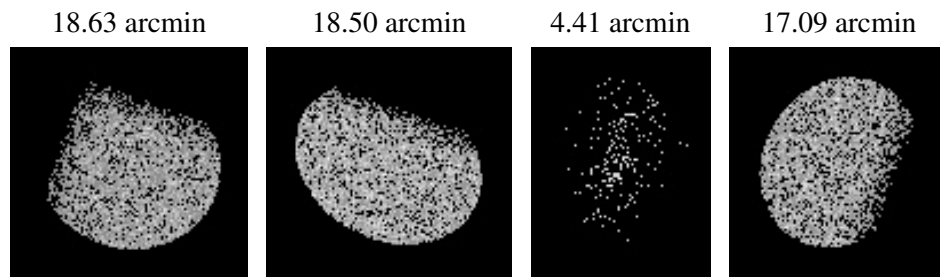
2.5.2 Slot 1



2.5.3 Slot 2



3 Point Sources



A Summary

A.1 Status

V&V Scientist	Jen Lauer
V&V Date (YYYY-MM-DD)	2006.09.10
V&V Edition	1
V&V Disposition and Status	OK
V&V Charge Time	58.959

A.2 Comments