

V&V Reference Report

L2 ASCDS Version : 7.6.9

Observation 2780 - L2 Version 001
Chandra X-Ray Center

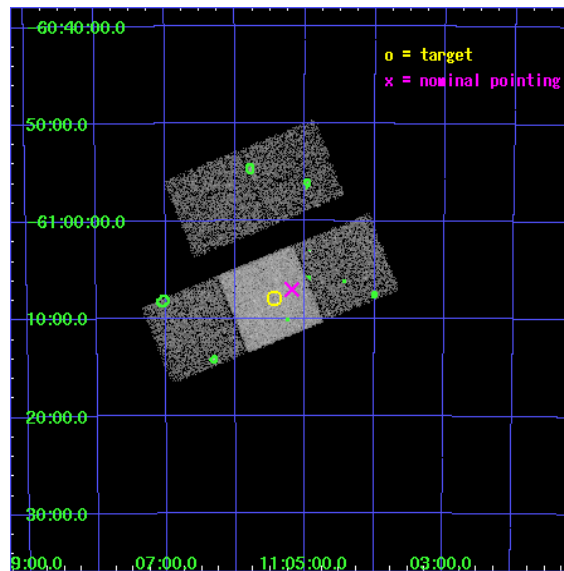
L2 Processing Date : Oct 5 2006

Contents

1	Front	2
2	OBI	3
2.1	OBI	3
2.1.1	Images	3
2.1.2	Bias	3
2.1.3	Parameters	4
2.1.4	Events	4
2.2	Compared Parameters	5
2.3	Aspect	6
2.4	Star Slots	9
2.4.1	Slot 3	9
2.4.2	Slot 4	10
2.4.3	Slot 5	11
2.4.4	Slot 6	12
2.4.5	Slot 7	13
2.5	FID Slots	14
2.5.1	Slot 0	14
2.5.2	Slot 1	15
2.5.3	Slot 2	16
3	Point Sources	17
A	Summary	18
A.1	Status	18
A.2	Comments	18

1 Front

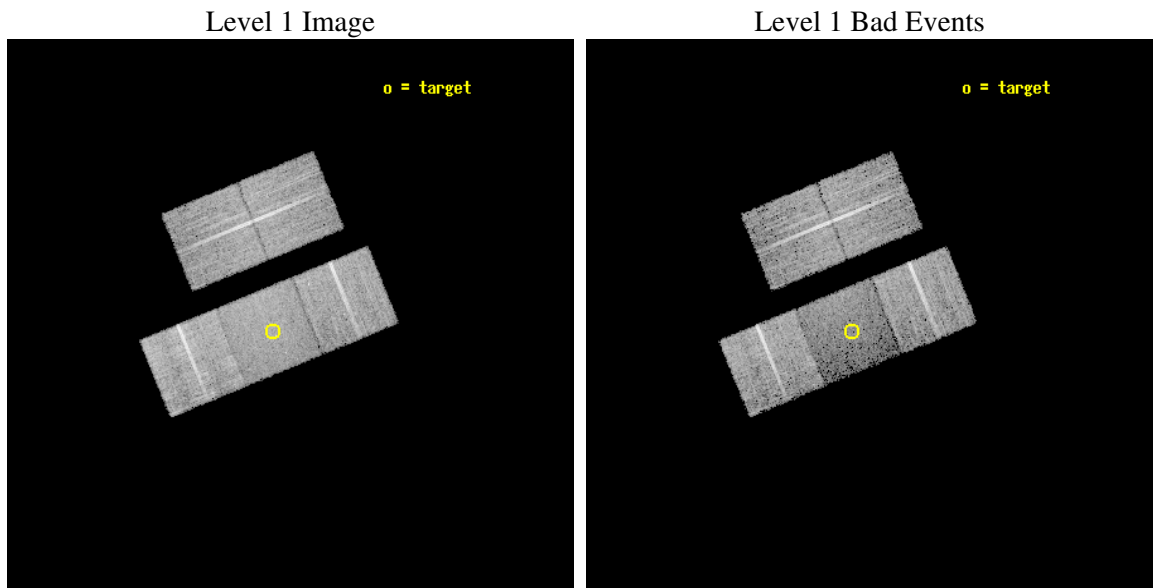
seq_num	500230
obs_id	2780
title	WHERE ARE THE SUPERNOVA REMNANTS AROUND YOUNG PULSARS?
observer	Professor Bryan Gaensler
object	PSR J1105-6107
dtcycle	0
cycle	P
ra_targ	166.359167
dec_targ	-61.131306
ra_nom	166.29717410615
dec_nom	-61.117162210106
roll_nom	157.76988875151
revision	2
ontime	11786.199977338
livetime	11632.20459776
ontime2	11783.059007138
ontime3	11786.199977338
ontime6	11786.199977338
ontime7	11786.199977338
ontime8	11783.059017122
l2events	49092



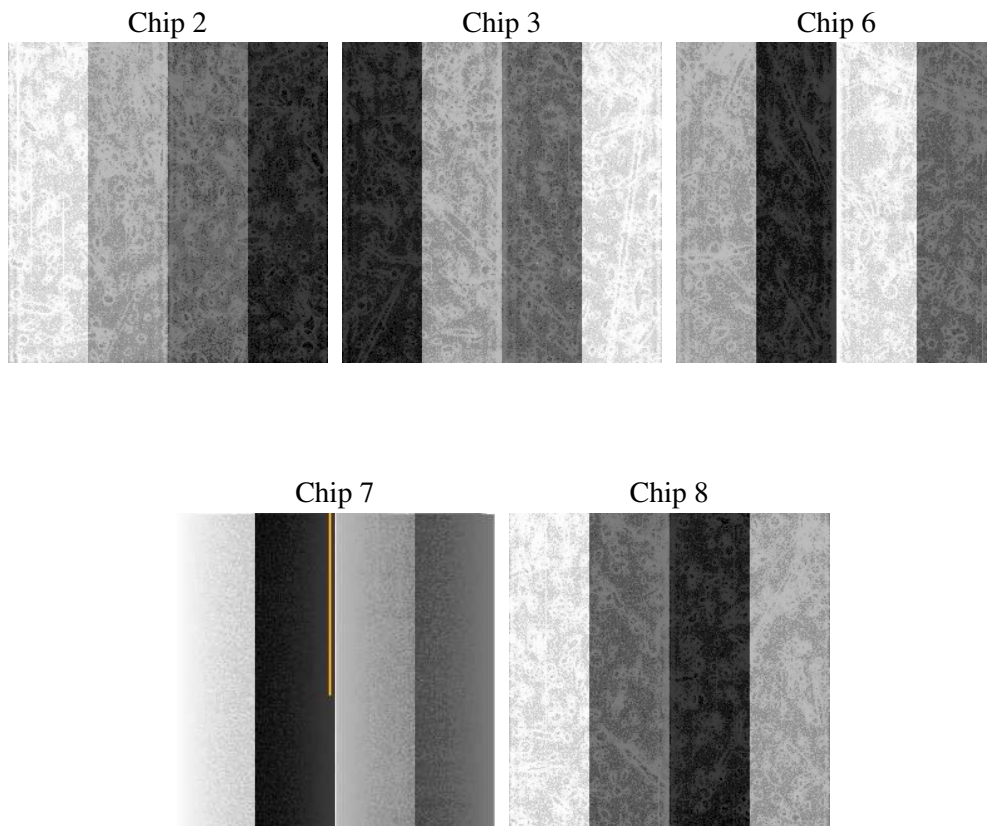
2 OBI

2.1 OBI

2.1.1 Images



2.1.2 Bias



2.1.3 Parameters

obi_num	0
ascdsver	7.6.9
caldsver	3.2.3
date	2006-10-05T15:46:50
revision	2

sched_exp_time	11900.000000
ontime	11791.31546846
ontime2	11788.17449826
ontime3	11791.31546846
ontime6	11791.31546846
ontime7	11791.31546846
ontime8	11788.174508244
l1events	311321

2.1.4 Events

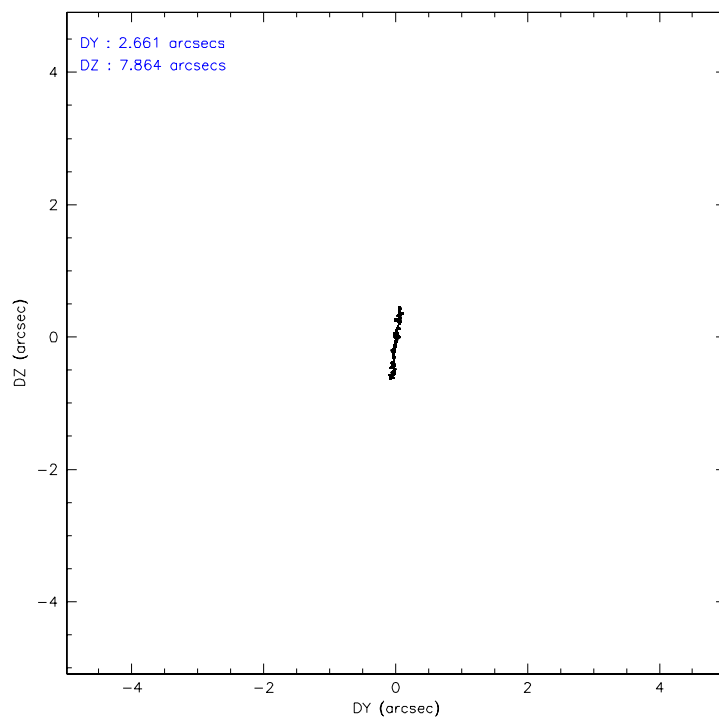
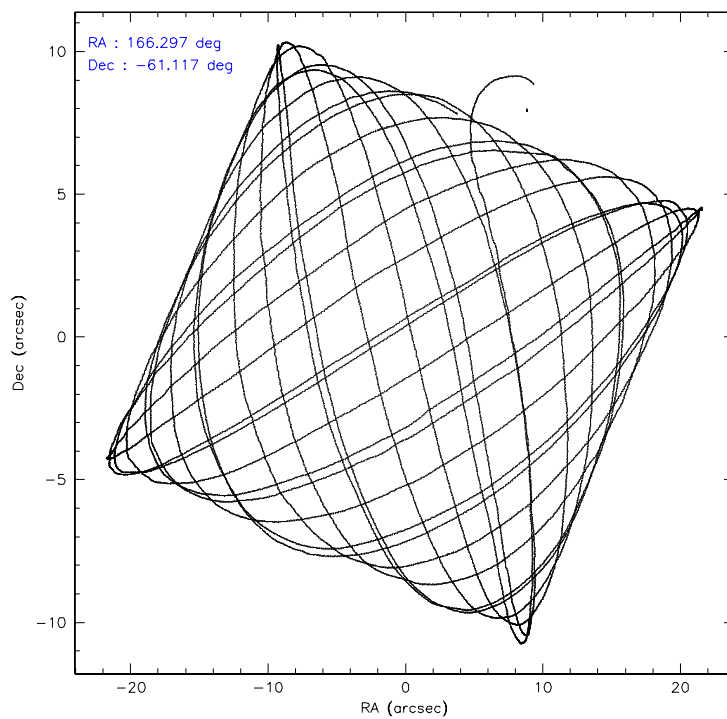
	ccd 2	ccd 3	ccd 6	ccd 7	ccd 8
level 1 events	60152	58187	62516	56380	74086
rejected events	54172	52183	54991	29571	57125
rejected %	90%	89%	87%	52%	77%

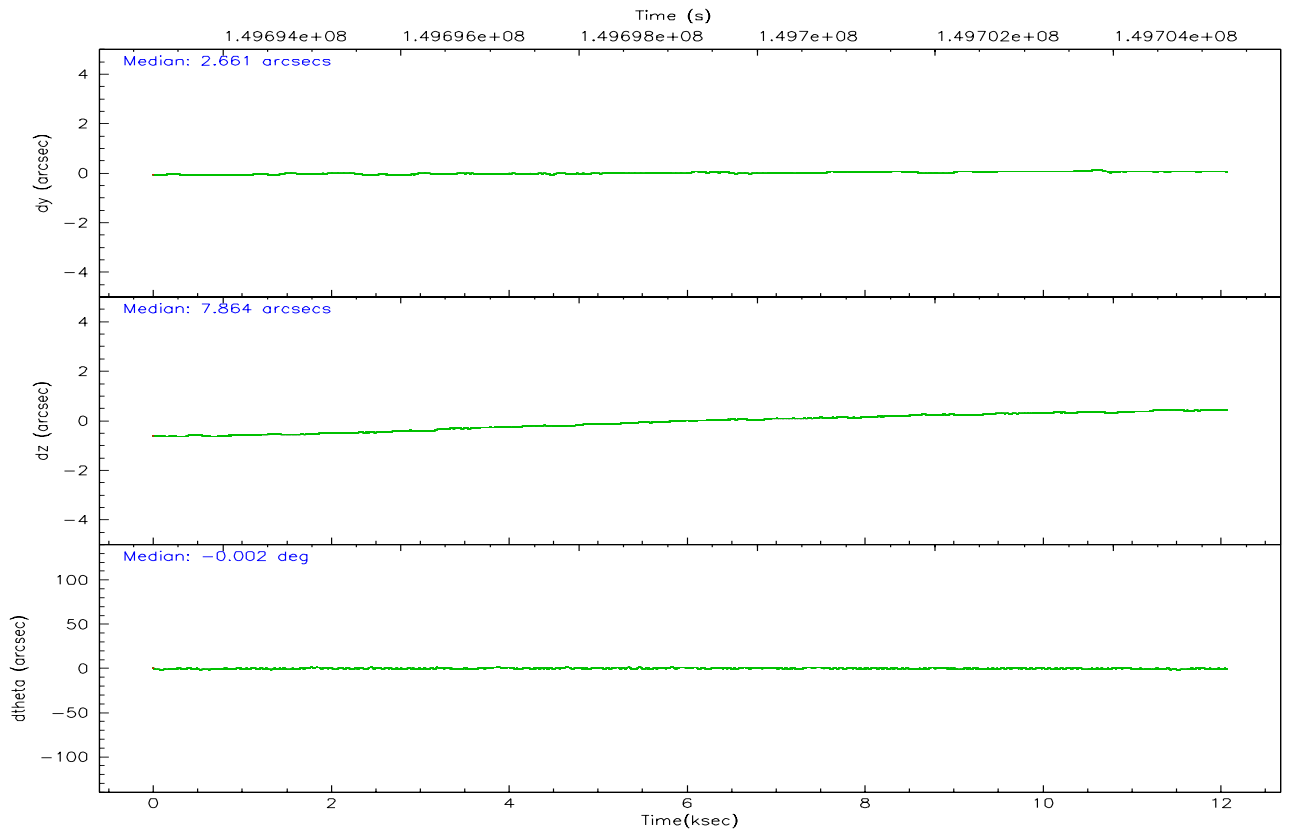
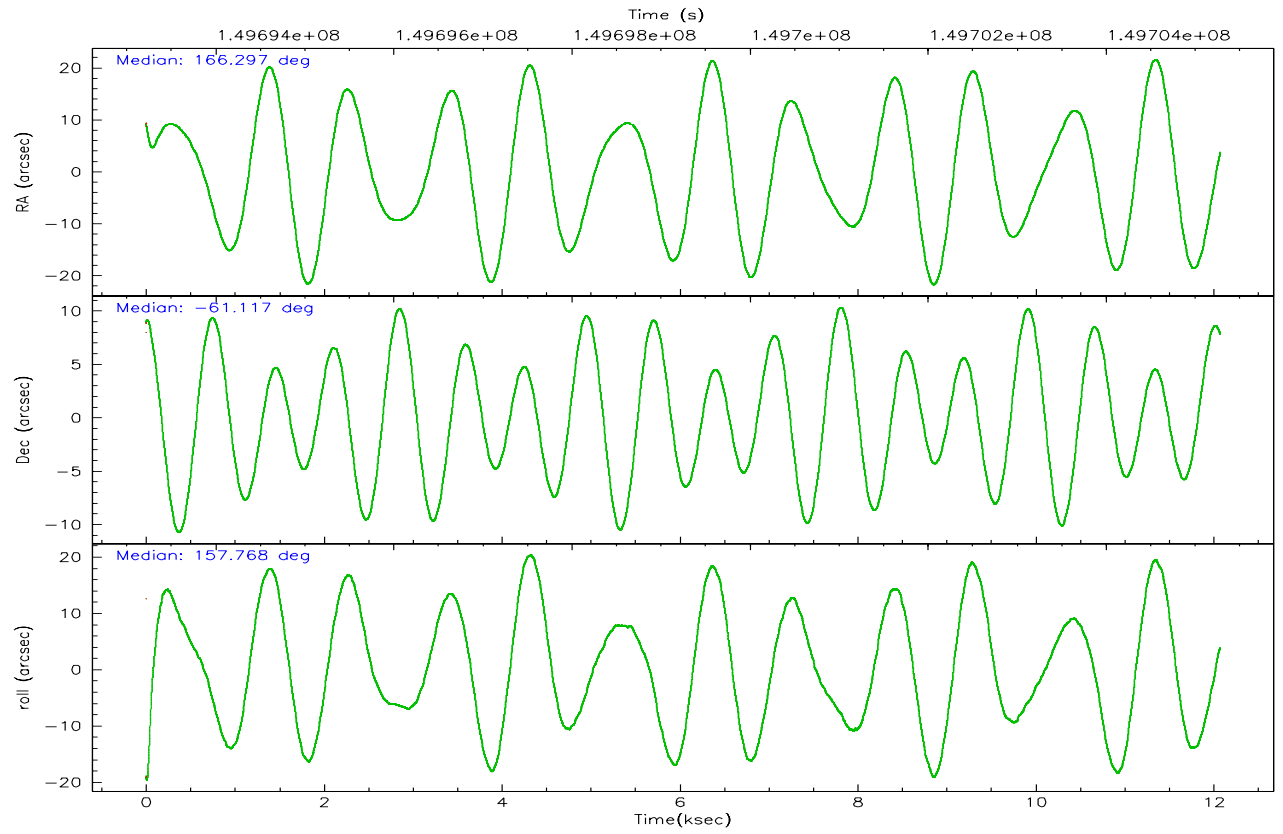
	ccd 2	ccd 3	ccd 6	ccd 7	ccd 8
grade 0 events	2620	2622	3460	2461	5330
	4%	4%	5%	4%	7%
grade 1 events	36	25	25	24	51
	0%	0%	0%	0%	0%
grade 2 events	1223	1097	1443	6794	3688
	2%	1%	2%	12%	4%
grade 3 events	638	669	728	1730	1904
	1%	1%	1%	3%	2%
grade 4 events	626	645	691	1739	1708
	1%	1%	1%	3%	2%
grade 5 events	1559	1802	1988	4221	2846
	2%	3%	3%	7%	3%
grade 6 events	876	973	1206	14095	4334
	1%	1%	1%	25%	5%
grade 7 events	52574	50354	52975	25316	54225
	87%	86%	84%	44%	73%

2.2 Compared Parameters

Parameter	Planned	Actual	Parameter	Planned	Actual
Instrument	ACIS	ACIS	Obspar format version number	6	6
Detector	ACIS-23678	ACIS-23678	Obspar file type	PREDICTED	ACTUAL
Grating	NONE	NONE	Obspar update status	NONE	UPDATED
Data mode	VFAINT	VFAINT	Number of optional ACIS chips dropped	0	0
Observation mode	POINTING	POINTING	On-chip summing requested	N	N
Pointing RA	166.352930	166.2971741061542	Subarray requested	NONE	NONE
Pointing Dec	-61.113126	-61.11716221010616	Alternating exposures requested	N	N
Pointing Roll	157.662112	157.7698887515118	Primary exposure time	0.000000	3.1
SIM focus pos (mm)	-0.684267	-0.6828225247311905			
SIM defocus (mm)	0	0.001444936568705701			
SIM translation stage pos (mm)	-190.132523	-190.1400660498719			
SIM translation stage offset (mm)	0	0.00754346686406393			
Observation start time	149693388.184000	149692411.25632			
Observation start date	2002-09-29T13:28:44	2002-09-29T13:13:31			
Observation end time	149705288.184000	149705940.23188			
Observation end date	2002-09-29T16:47:04	2002-09-29T16:59:00			
Read mode	TIMED	TIMED			

2.3 Aspect



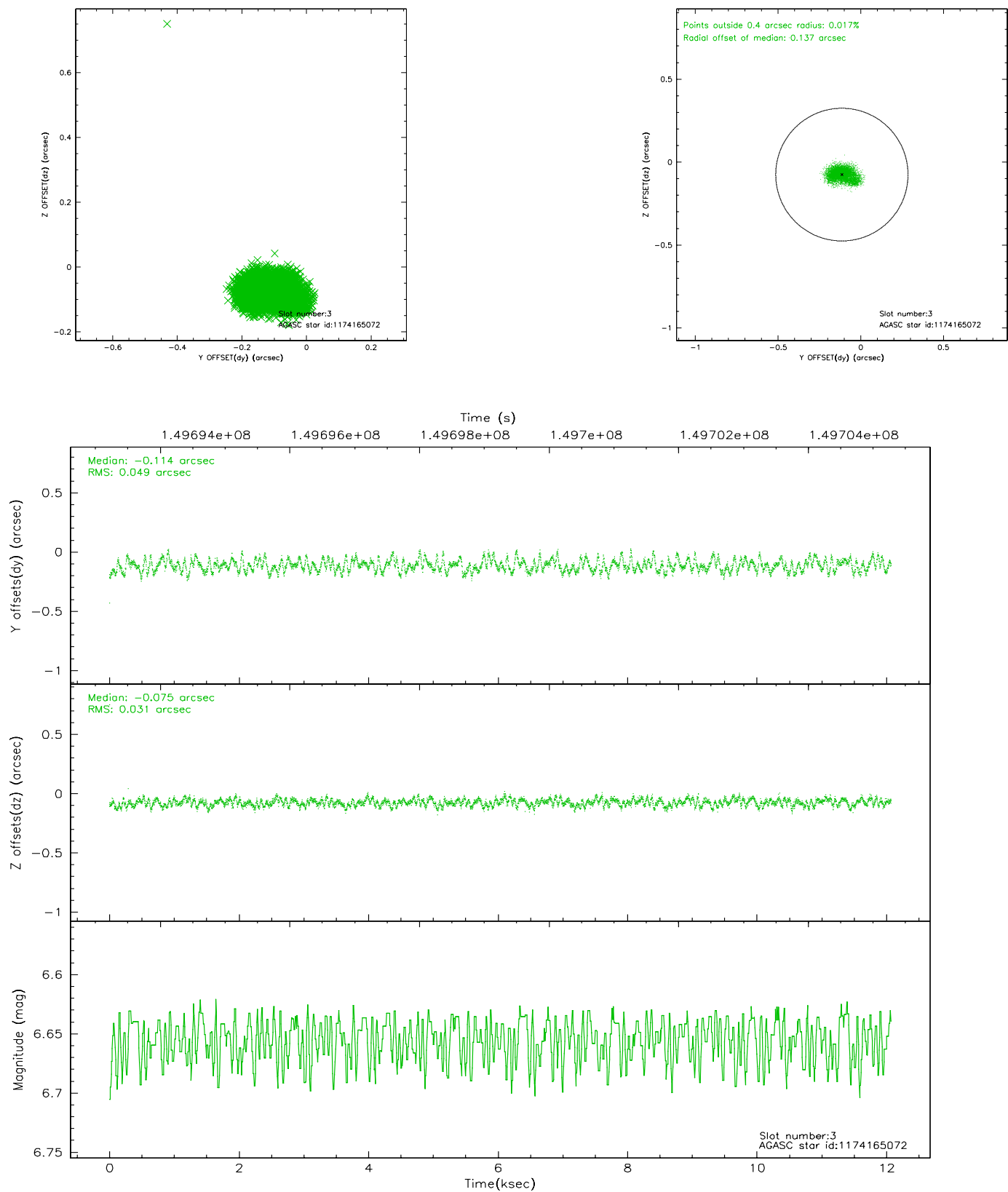


Slot Statistics

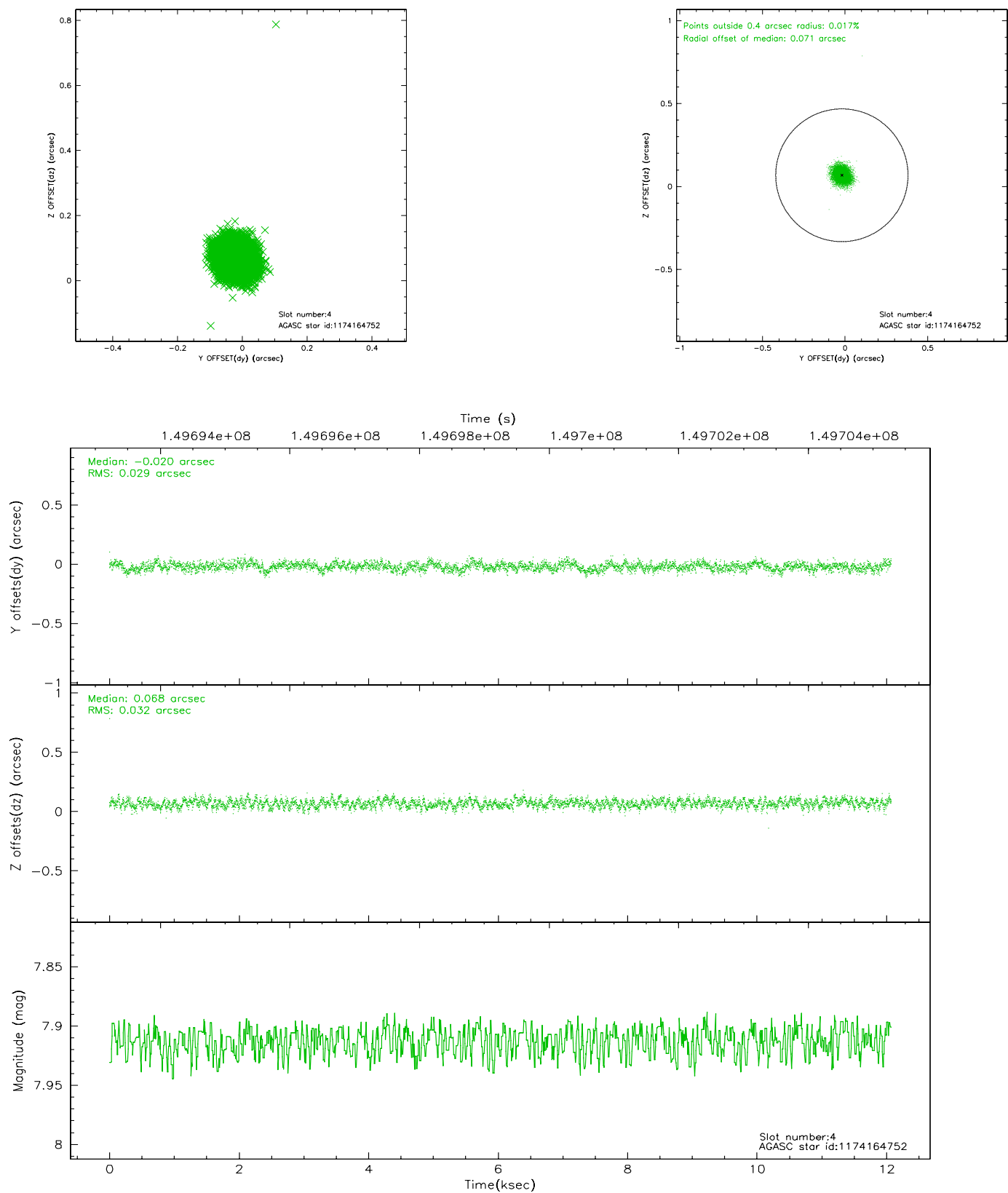
slot	status	id	mag	n_pts	med_dy	med_dz	dr1	dr2	ra	dec	mean_y	mean_z
0	FID	ACIS-S-3	7.35	2945	-0.052	0.005	0.021	0.031	0.000000	0.000000	57.77	-1858.05
1	FID	ACIS-S-5	7.24	2945	0.069	-0.028	0.008	0.015	0.000000	0.000000	-1808.25	172.56
2	FID	ACIS-S-6	7.35	2946	-0.040	0.030	0.020	0.032	0.000000	0.000000	405.86	816.95
3	GUIDE	1174165072	6.65	5891	-0.114	-0.075	0.060	0.099	164.808363	-61.320739	2170.84	1733.97
4	GUIDE	1174164752	7.91	5891	-0.020	0.068	0.045	0.073	166.202600	-60.663321	859.94	-1397.00
5	GUIDE	1174277736	7.97	5889	0.036	0.007	0.061	0.105	167.205882	-61.559450	-1967.81	938.34
6	GUIDE	1174172736	8.26	5890	0.066	0.004	0.051	0.082	165.291451	-61.221953	1545.64	1074.92
7	GUIDE	1174277760	8.82	5888	0.024	-0.004	0.070	0.114	167.829413	-60.920065	-2137.02	-1598.29

2.4 Star Slots

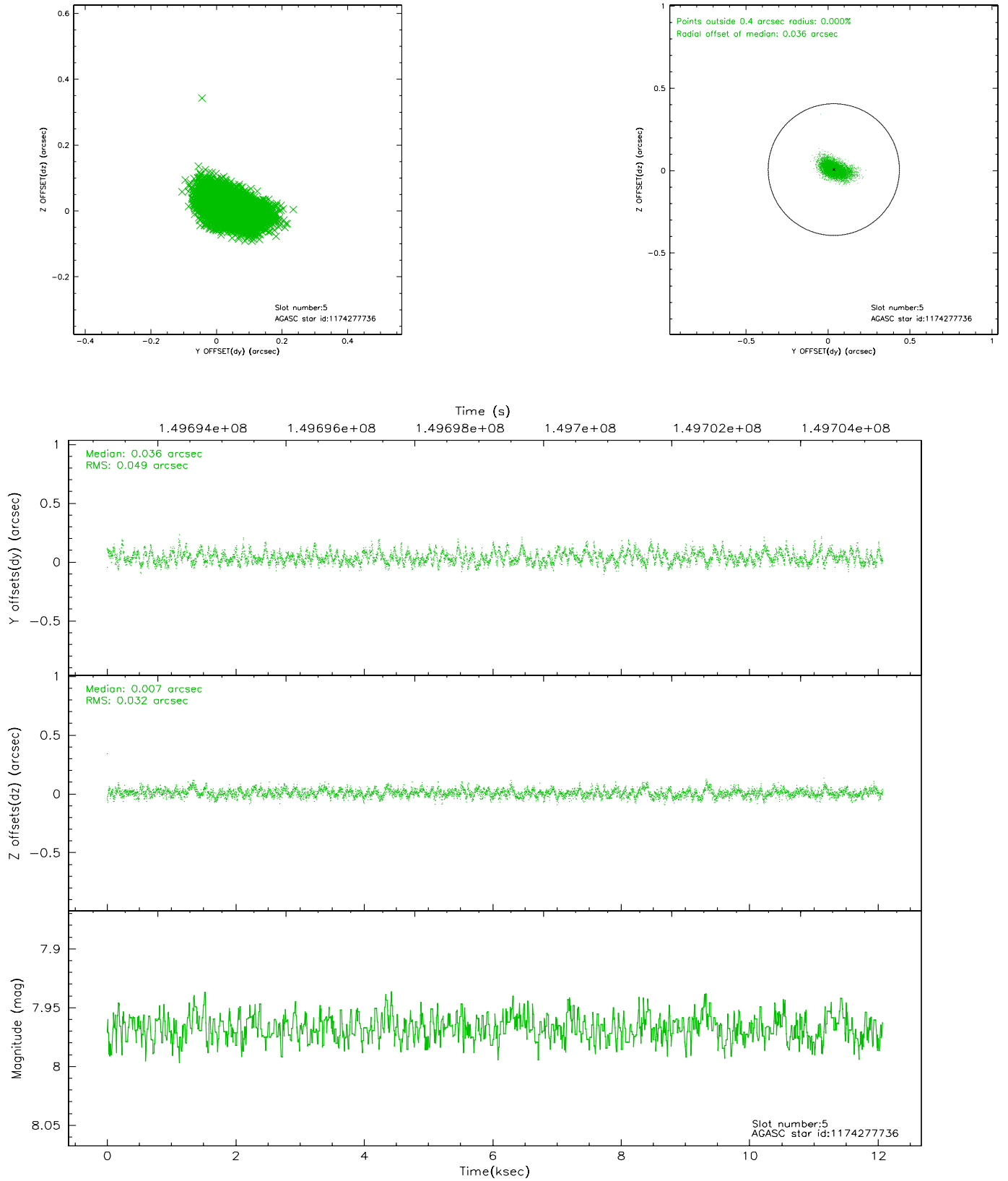
2.4.1 Slot 3



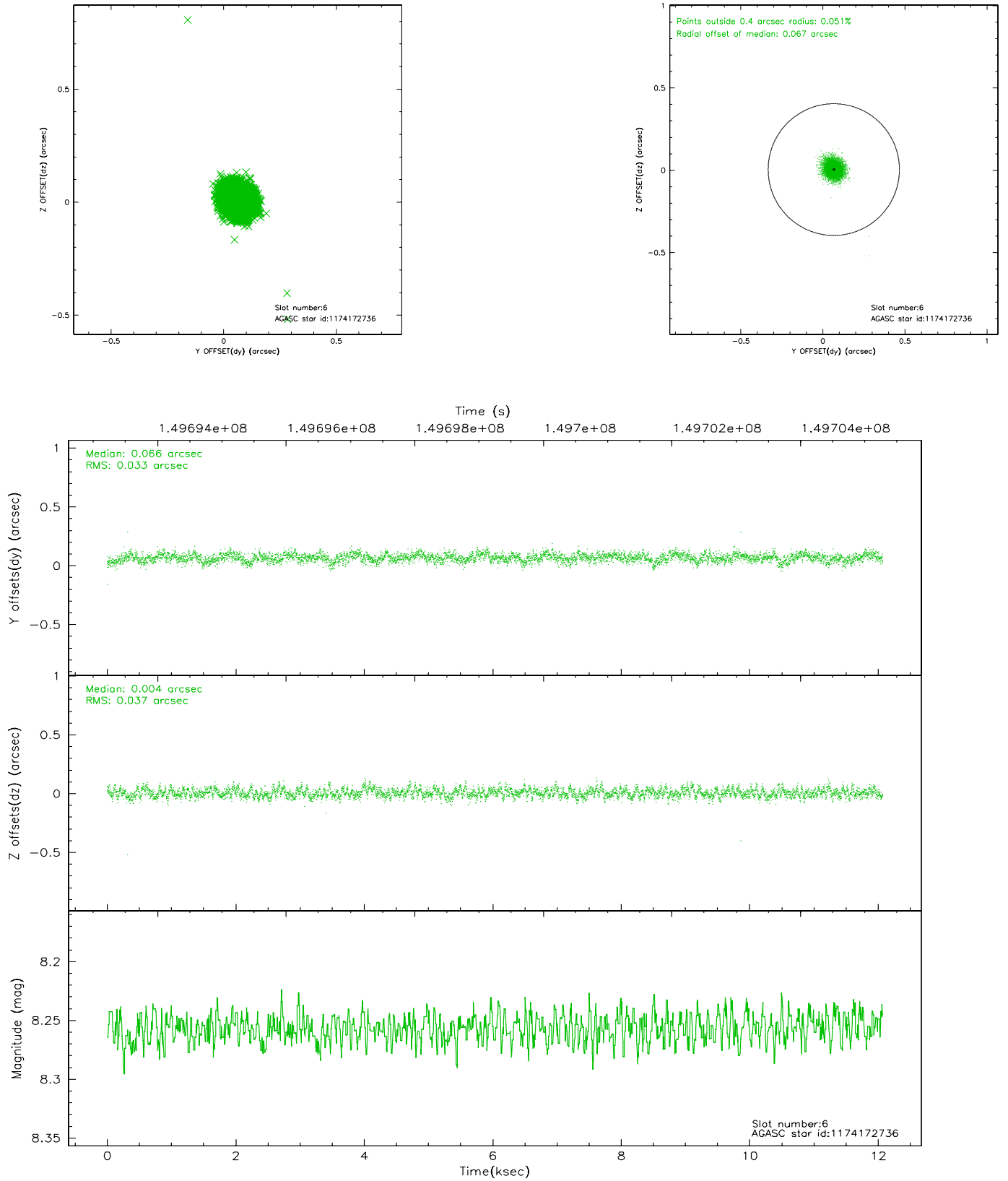
2.4.2 Slot 4



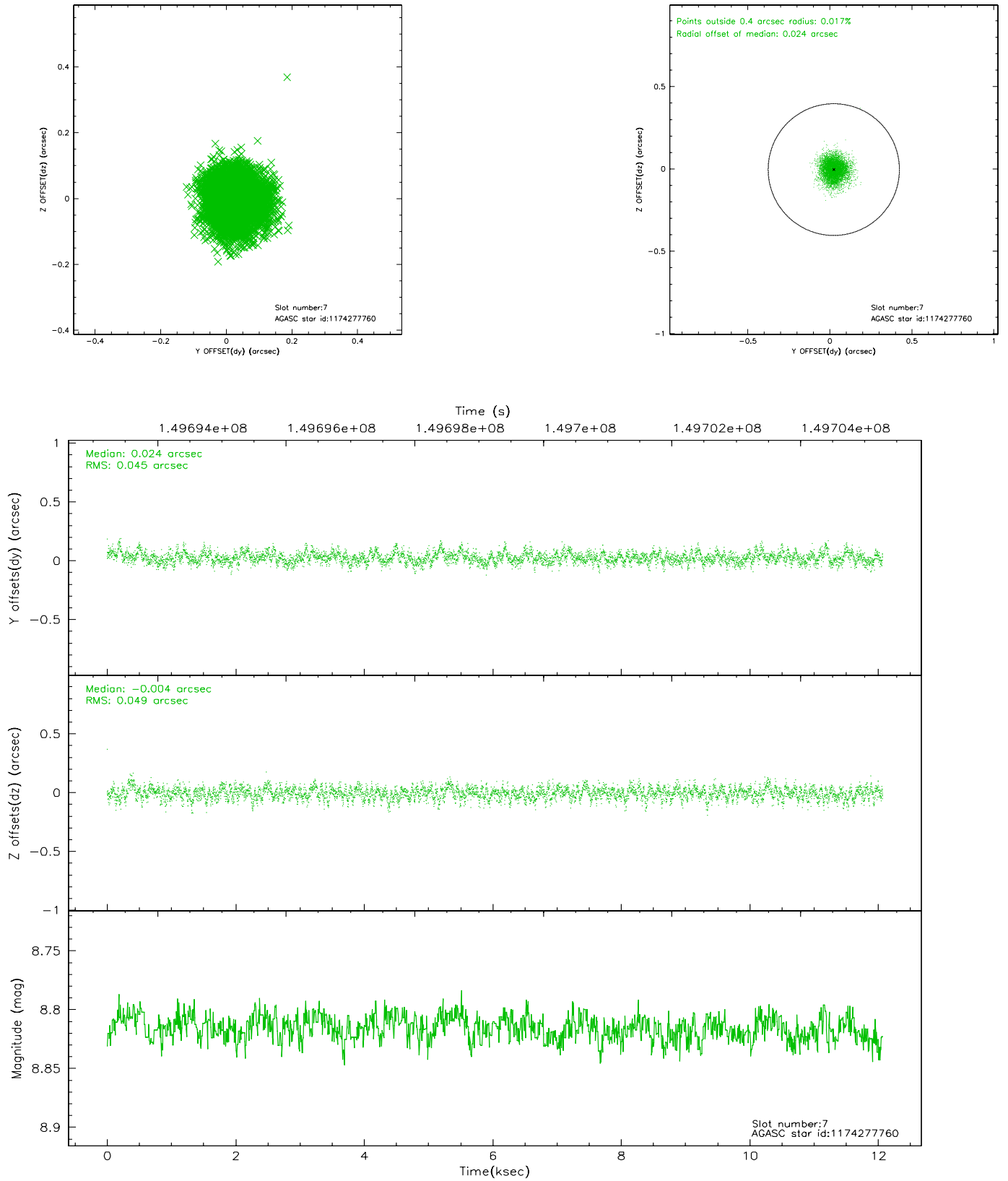
2.4.3 Slot 5



2.4.4 Slot 6

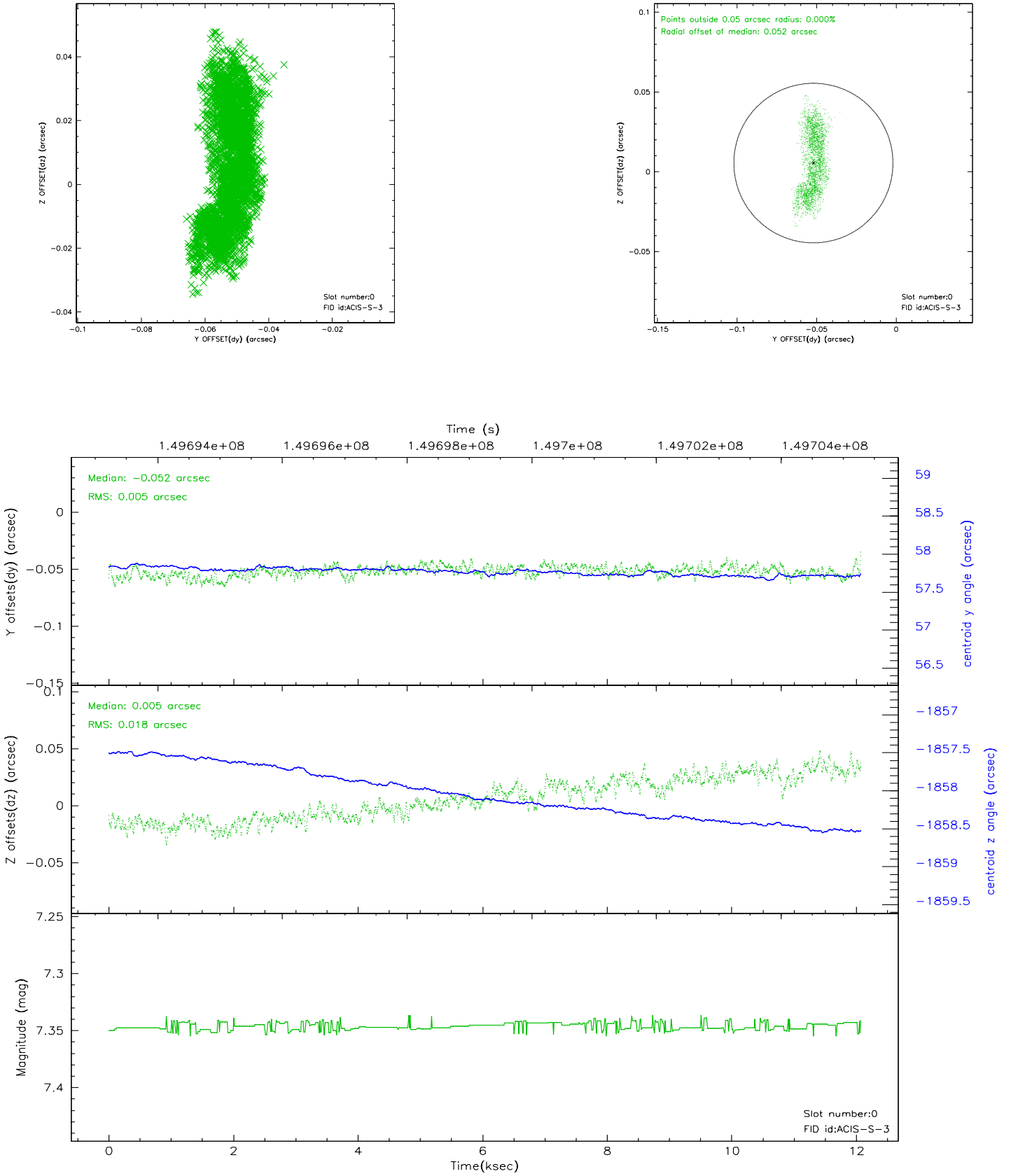


2.4.5 Slot 7

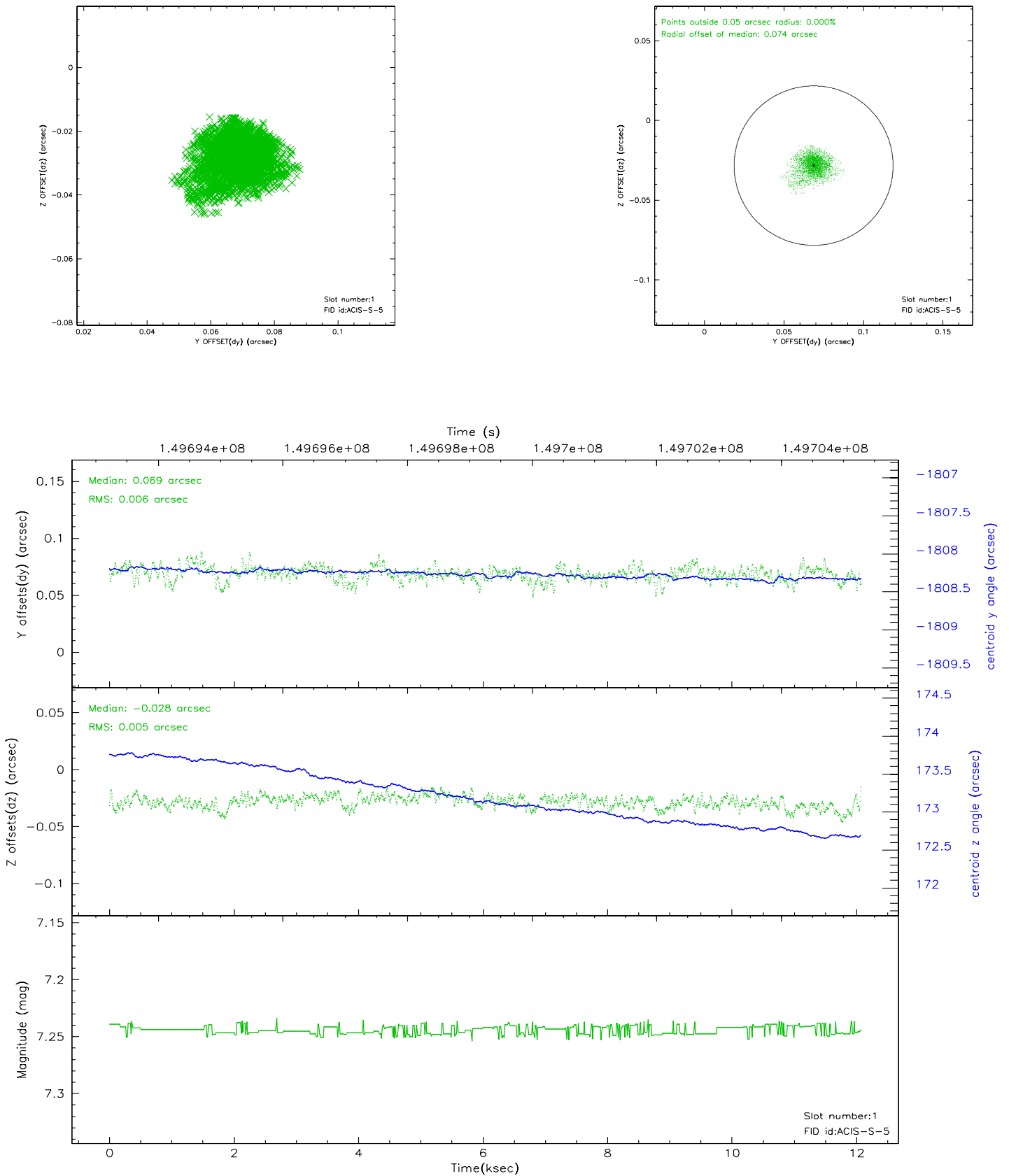


2.5 FID Slots

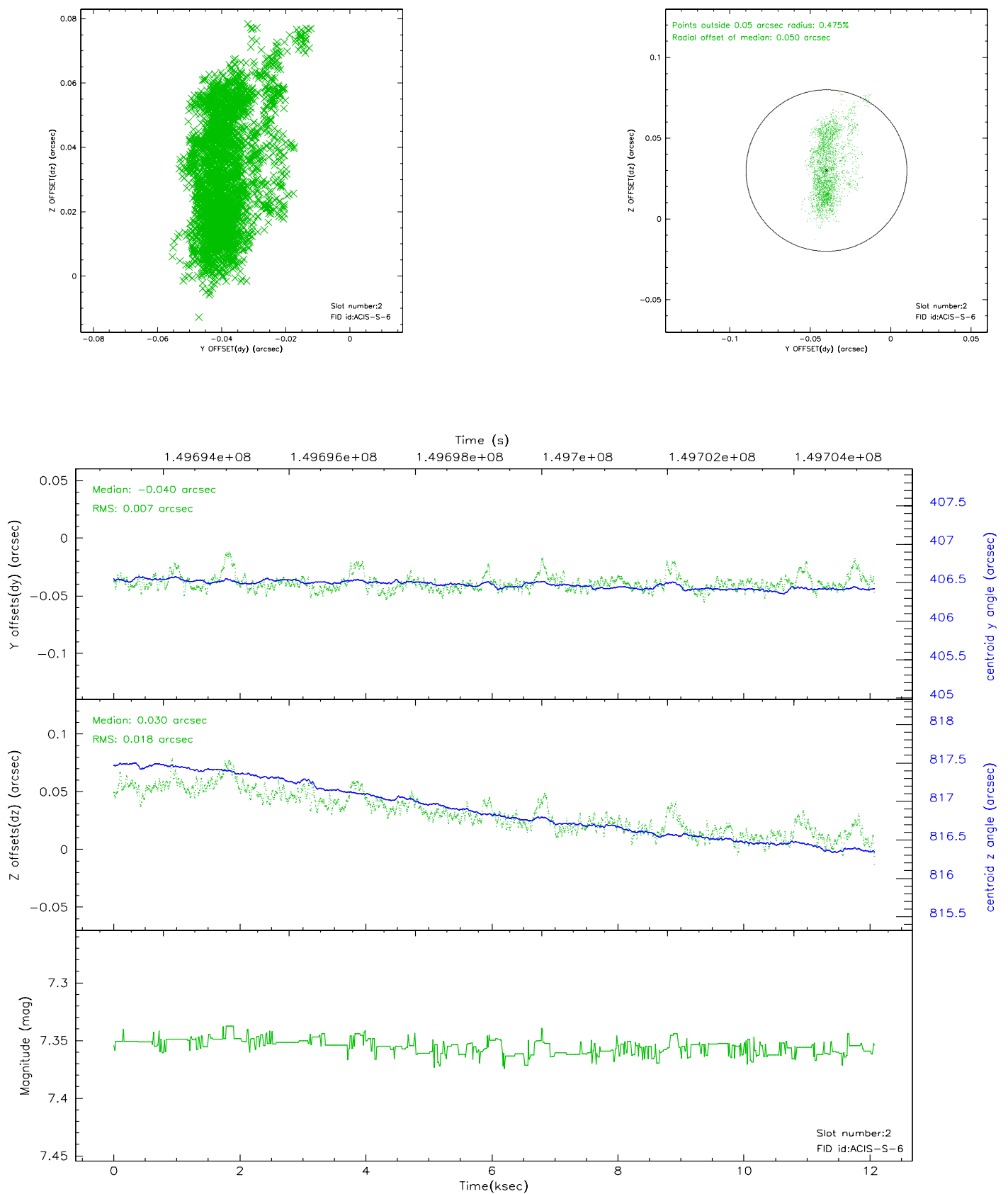
2.5.1 Slot 0



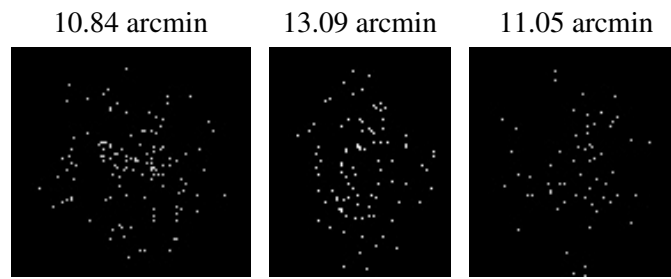
2.5.2 Slot 1



2.5.3 Slot 2



3 Point Sources



A Summary

A.1 Status

V&V Scientist	Jen Lauer
V&V Date (YYYY-MM-DD)	2006.10.05
V&V Edition	1
V&V Disposition and Status	OK
V&V Charge Time	11.789

A.2 Comments

Focal plane temperature is warmer than -118.7 C degrees during the entire observation. The ACIS spectral response calibration for the front-illuminated chips is less accurate at these warmer temperatures than it is at -119.7 C. The back-illuminated chips are not affected at the focal plane temperatures recorded for this observation. Users whose science objectives depend on the most accurate spectral response (i.e.: fitting line-rich spectra) may notice an effect. Users whose science objectives do not depend on the most accurate spectral response should not notice an effect.