

V&V Reference Report

L2 ASCDS Version : 8.4.5

Observation 2140 - L2 Version 3
Chandra X-Ray Center

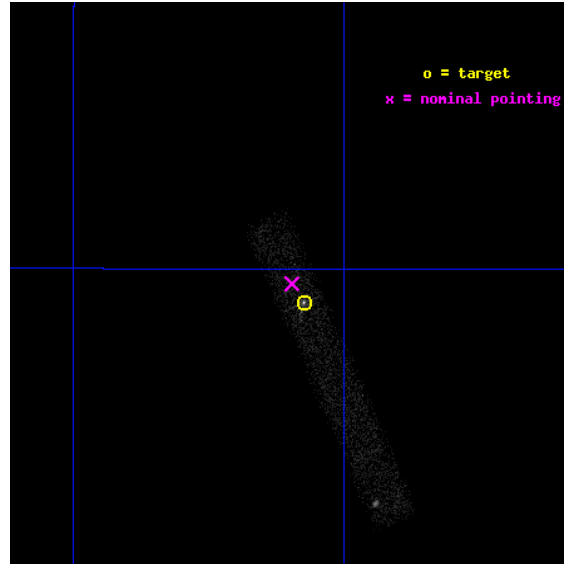
L2 Processing Date : Sep 6 2012

Contents

1	Front	2
2	OBI	3
2.1	OBI	3
2.1.1	Images	3
2.1.2	Bias	3
2.1.3	Parameters	4
2.1.4	Events	4
2.2	Compared Parameters	5
2.3	Aspect	6
2.4	Star Slots	9
2.4.1	Slot 3	9
2.4.2	Slot 4	10
2.4.3	Slot 5	11
2.4.4	Slot 6	12
2.4.5	Slot 7	13
2.5	FID Slots	14
2.5.1	Slot 0	14
2.5.2	Slot 1	15
2.5.3	Slot 2	16
A	Summary	17
A.1	Status	17
A.2	Comments	17

1 Front

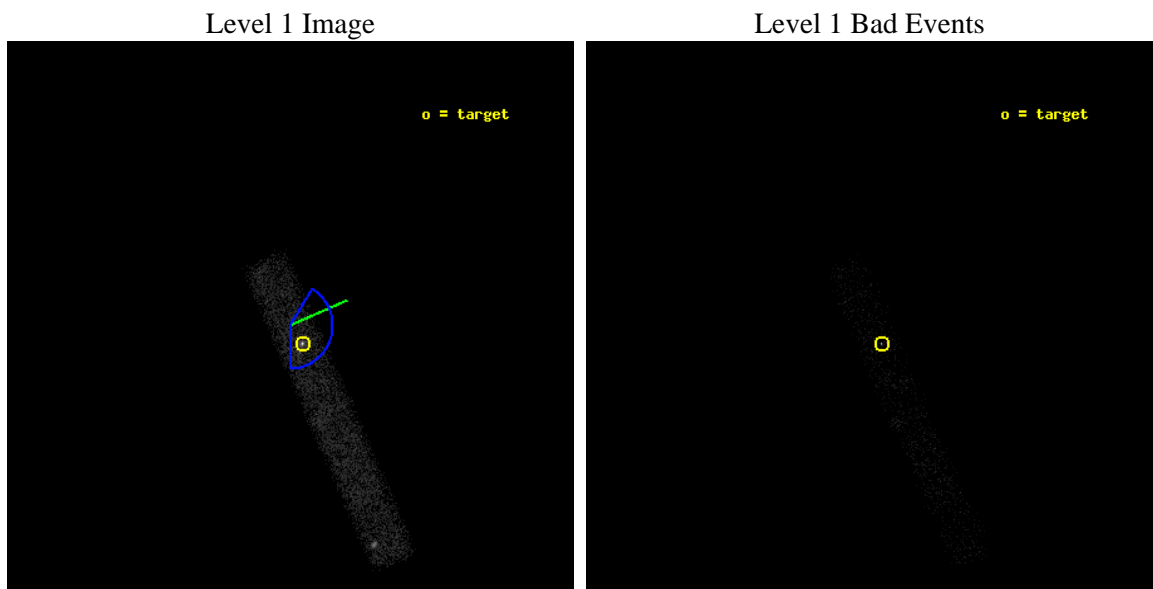
seq_num	700330	Sequence number
obs_id	2140	Observation id
title	AN UNBIASED SURVEY OF X-RAY AND OPTICAL EMISSION FROM EXTENDED RADIO JETS IN AGN	Proposal title
observer	Dr. Rita Sambruna	Principal investigator
object	1354+195	Source name
dtcycle	0	
cycle	P	events from which exps? Prim/Second/Both
ra_targ	209.268333	Observer's specified target RA [deg]
dec_targ	19.318611	Observer's specified target Dec [deg]
ra_nom	209.27418647953	Nominal RA [deg]
dec_nom	19.326752194383	Nominal Dec [deg]
roll_nom	66.221140261582	Nominal Roll [deg]
revision	3	Processing version of data
ontime	9984.8001487851	Sum of GTIs [s]
livetime	9055.6866939825	Livetime [s]
ontime7	9984.8001487851	Sum of GTIs [s]
l2events	11595	Number of level 2 events



2 OBI

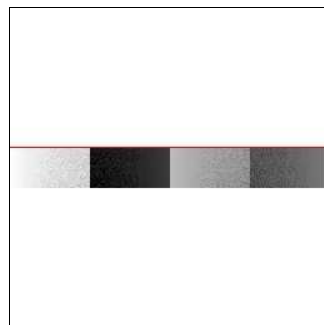
2.1 OBI

2.1.1 Images



2.1.2 Bias

Chip 7



2.1.3 Parameters

obi_num	0	Obi number	sched_exp_time	9500.000000	[s] Scheduled observation exposure time
ascdsver	8.4.5	Processing system revision	ontime	9984.8001487851	Sum of GTIs [s]
caldsver	4.5.1.1	 	ontime7	9984.8001487851	Sum of GTIs [s]
date	2012-09-06T09:25:35	Date and time of file creation	l1events	17911	Number of level 1 events
revision	3	Processing version of data			

2.1.4 Events

	ccd 7
level 1 events	17911
rejected events	6119
rejected %	34%

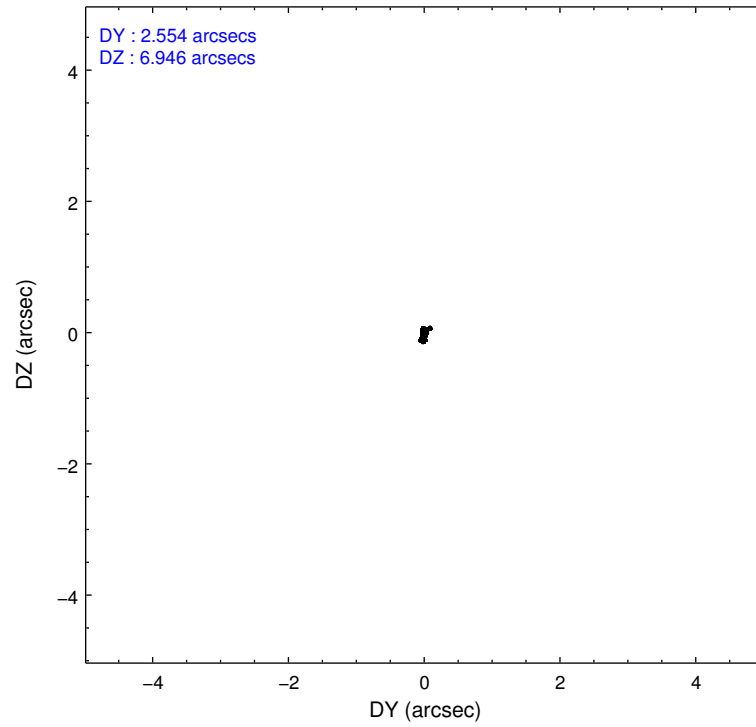
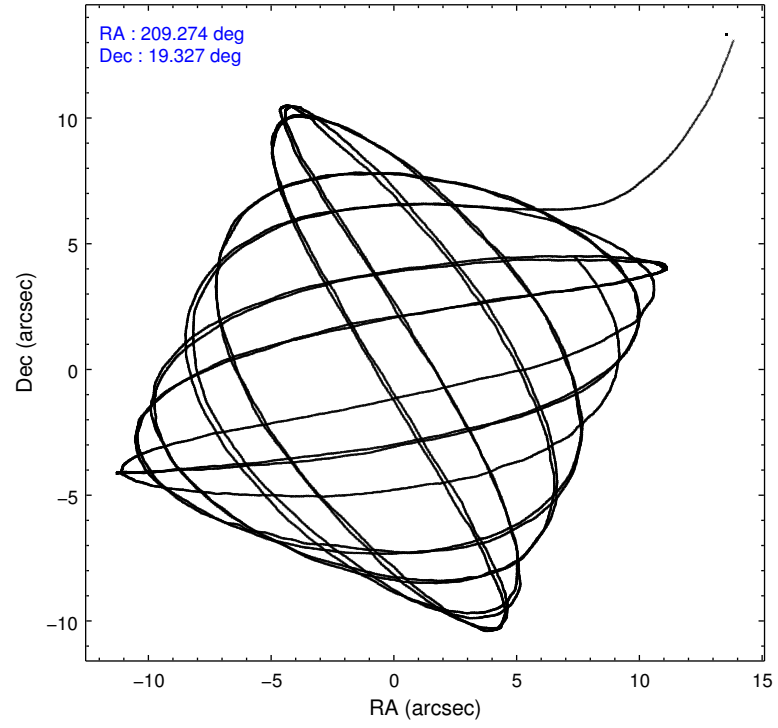
	ccd 7
grade 0 events	2825
	15%
grade 1 events	62
	0%
grade 2 events	2695
	15%
grade 3 events	1473
	8%
grade 4 events	1474
	8%
grade 5 events	1081
	6%
grade 6 events	3676
	20%
grade 7 events	4625
	25%

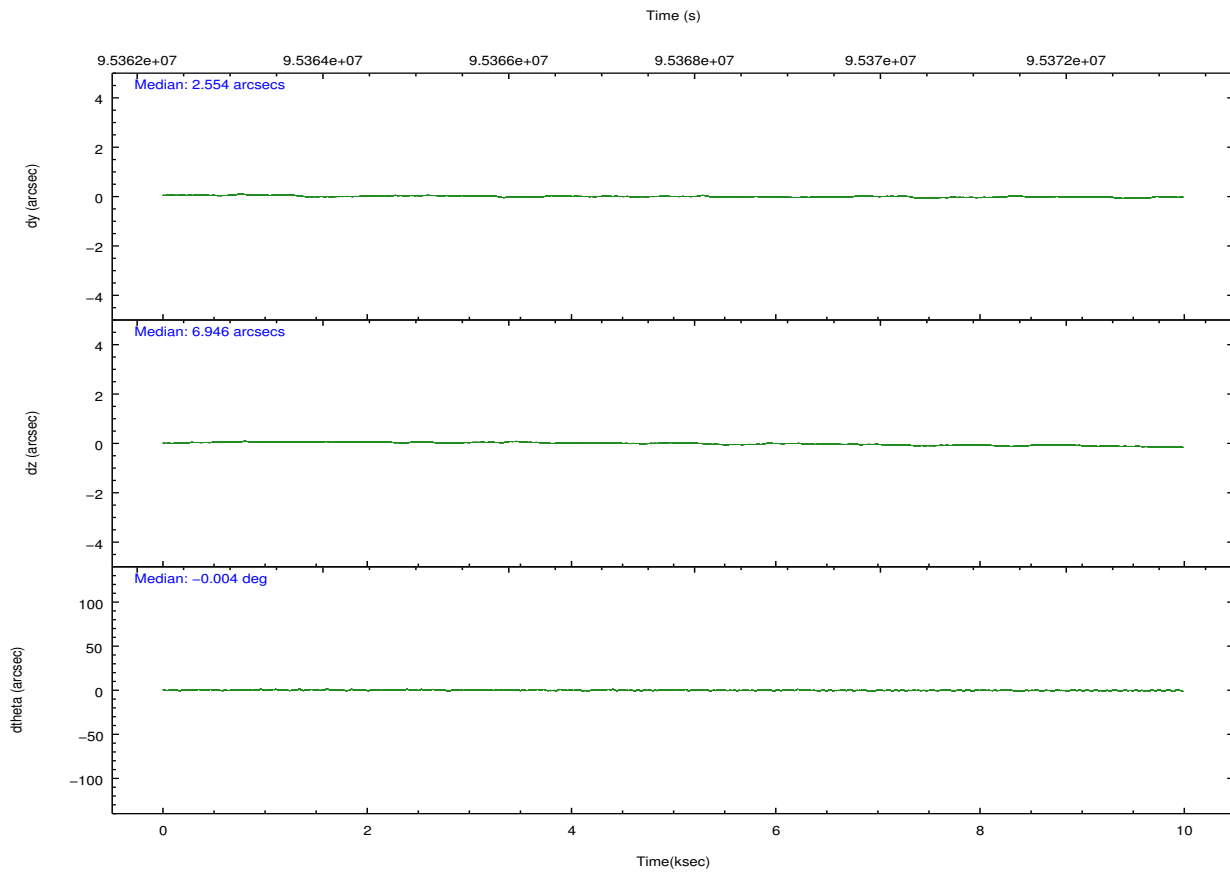
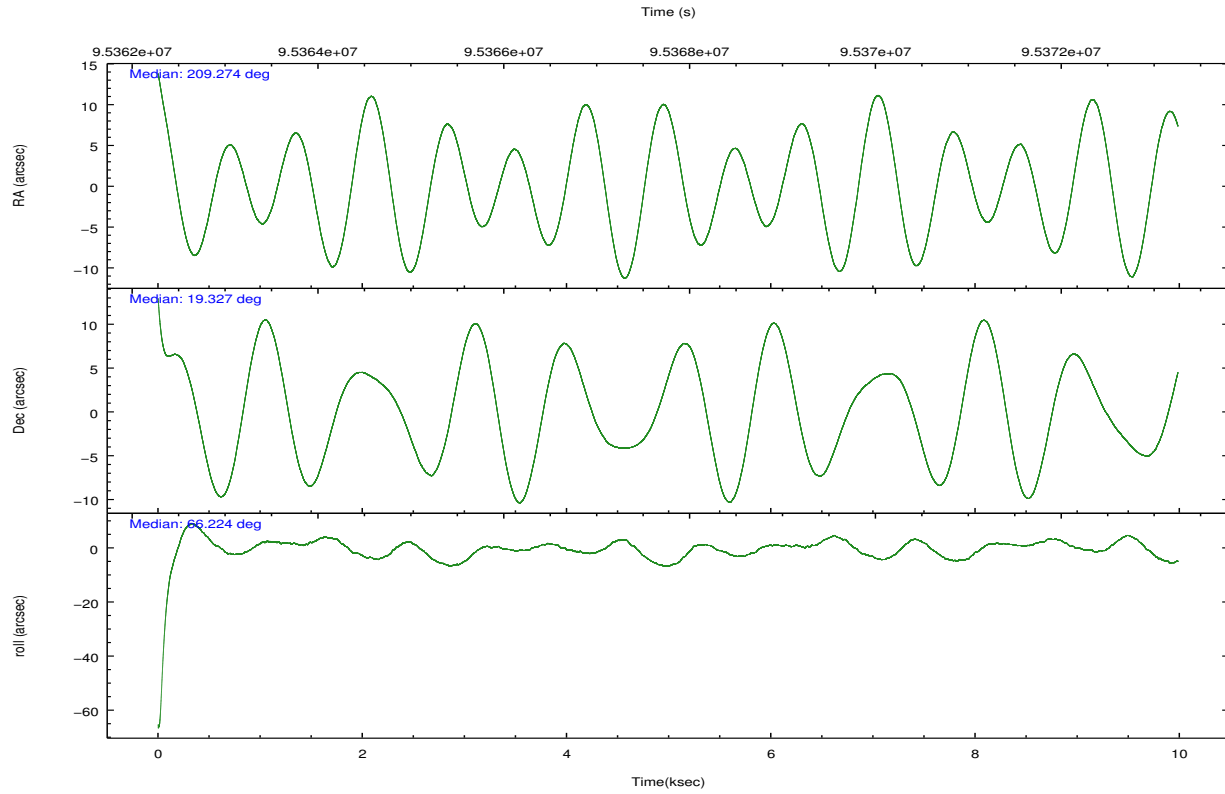
2.2 Compared Parameters

Parameter	Planned	Actual
Instrument	ACIS	ACIS
Detector	ACIS-7	ACIS-7
Grating	NONE	NONE
Data mode	FAINT	FAINT
Observation mode	POINTING	POINTING
[deg] Pointing RA	209.277557	209.2741864795323
[deg] Pointing Dec	19.299613	19.32675219438284
[deg] Pointing Roll	66.063464	66.22114026158243
[deg] Roll angle	105.000000	105.000000
[deg] Roll tolerance	74.000000	74.000000
Roll constraint allows 180D rotation	N	N
[mm] SIM focus pos	-0.684267	-0.6828225247311905
[mm] SIM defocus	0	0.001444936568705701
[mm] SIM translation stage pos	-190.132523	-190.1425803651734
[mm] SIM translation stage offset	0	0.01005778216563158
[s] Observation start time (MET)	95363264.184000	95362144.68937001
Observation start date	2001-01-08T17:46:40	2001-01-08T17:29:04
[s] Observation end time (MET)	95372764.184000	95373319.752299
Observation end date	2001-01-08T20:25:00	2001-01-08T20:35:19
Read mode	TIMED	TIMED

Parameter	Planned	Actual
Obspar format version number	7	7
Obspar file type	PREDICTED	ACTUAL
Obspar update status	NONE	UPDATED
Number of optional ACIS chips dropped	0	0
On-chip summing requested	N	N
Subarray requested	CUSTOM	1/8
Subarray start row	449	449
Subarray row count	128	128
Alternating exposures requested	N	N
[s] Primary exposure time	0.000000	0.4

2.3 Aspect



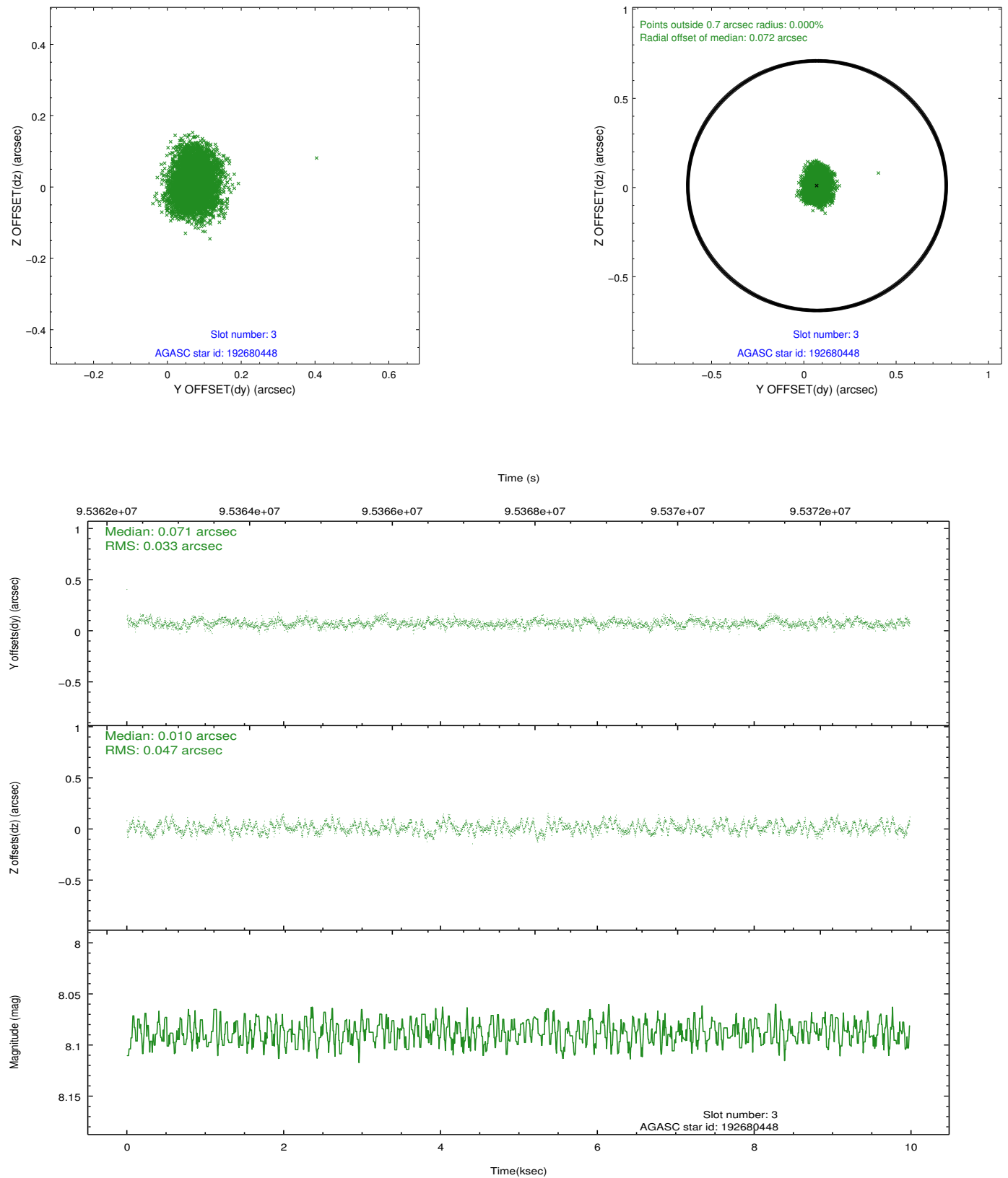


Slot Statistics

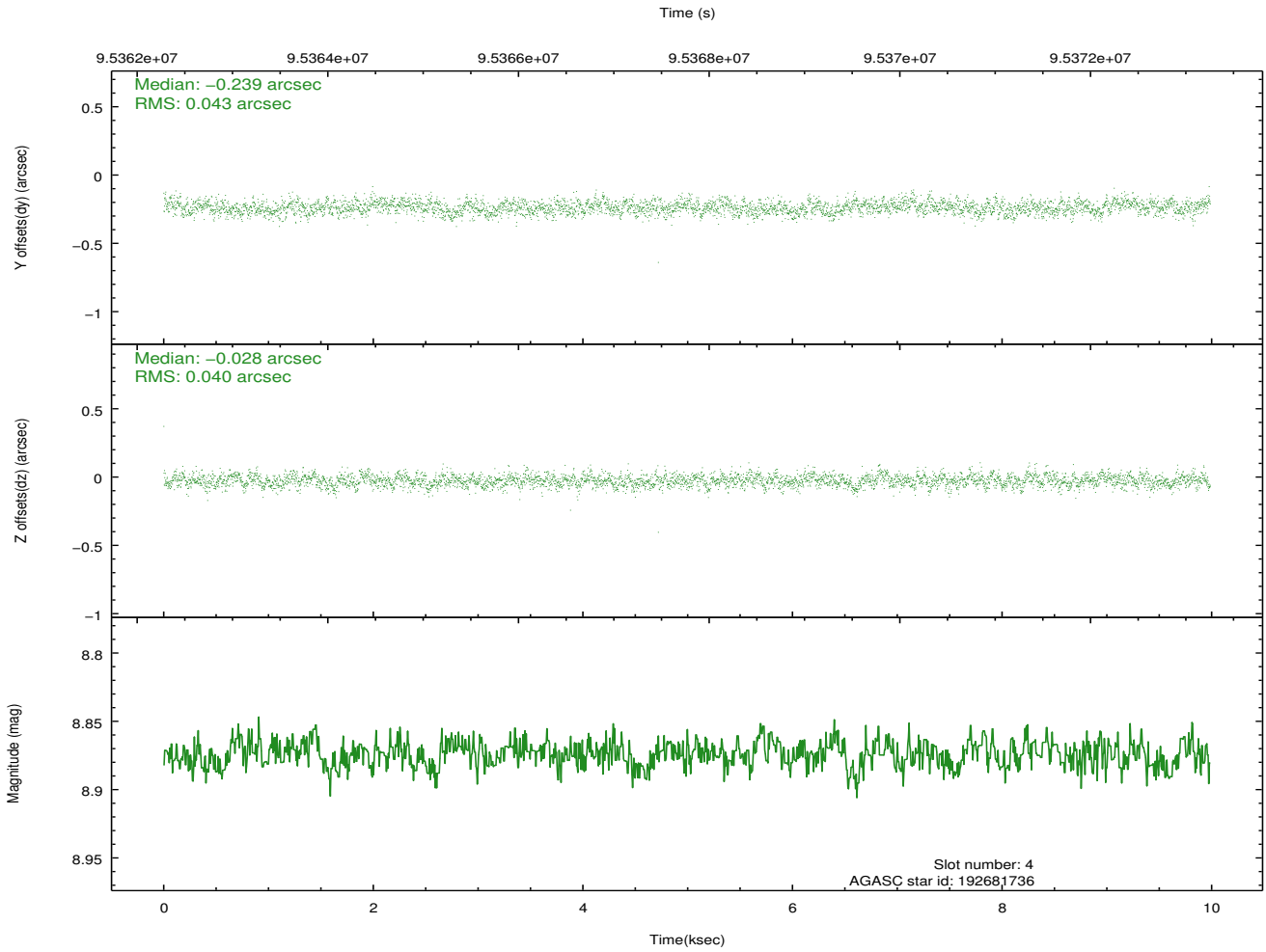
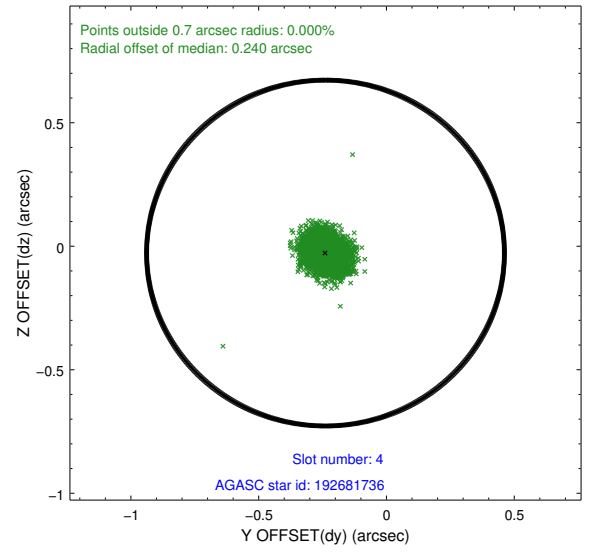
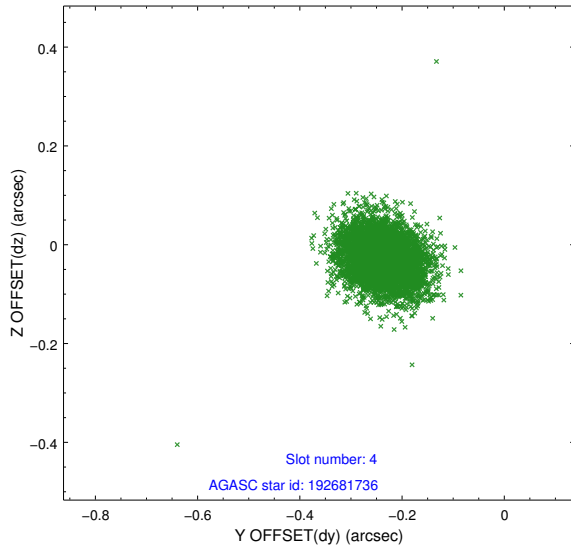
slot	status	id	mag	n_pts	med_dy	med_dz	dr1	dr2	ra	dec	mean_y	mean_z
0	FID	ACIS-S-2	7.11	2436	-0.017	0.003	0.007	0.011	0.000000	0.000000	-755.21	-1728.04
1	FID	ACIS-S-4	7.20	2436	-0.023	0.007	0.005	0.010	0.000000	0.000000	2157.83	179.89
2	FID	ACIS-S-5	7.24	2436	0.009	-0.002	0.006	0.011	0.000000	0.000000	-1807.33	174.17
3	GUIDE	192680448	8.09	4871	0.071	0.010	0.062	0.099	209.583470	18.944304	-744.56	-1470.96
4	GUIDE	192681736	8.87	4872	-0.239	-0.028	0.061	0.100	209.530944	19.458283	872.23	-554.86
5	GUIDE	192675912	9.09	4871	0.097	-0.062	0.067	0.111	209.556745	19.286625	344.11	-886.17
6	GUIDE	192677632	9.21	4868	0.099	0.135	0.095	0.158	209.730671	18.841125	-879.30	-2080.26
7	GUIDE	192678056	9.45	4867	-0.028	-0.053	0.074	0.119	209.629569	19.594794	1457.59	-660.47

2.4 Star Slots

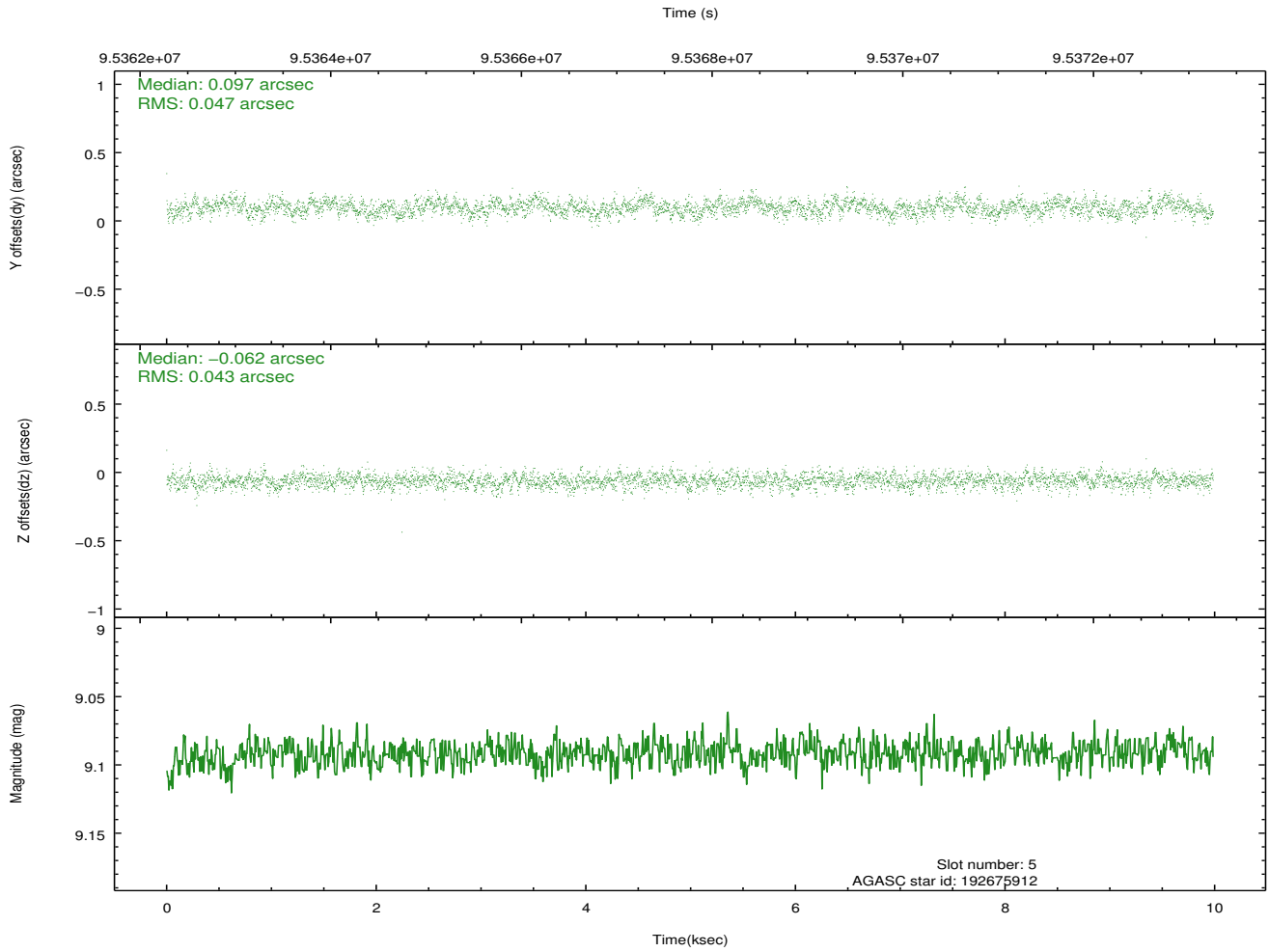
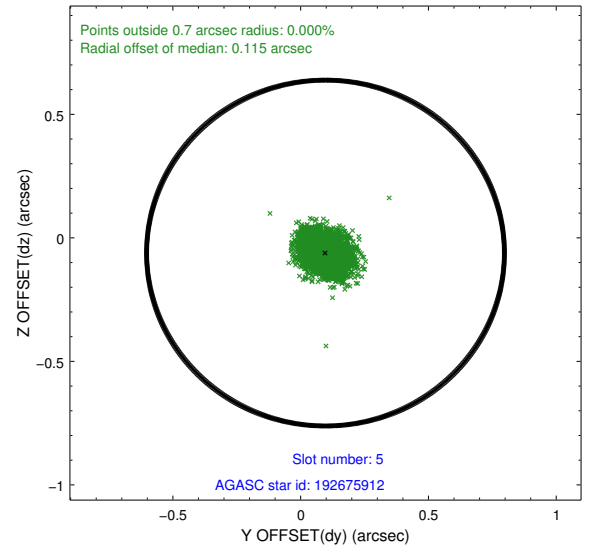
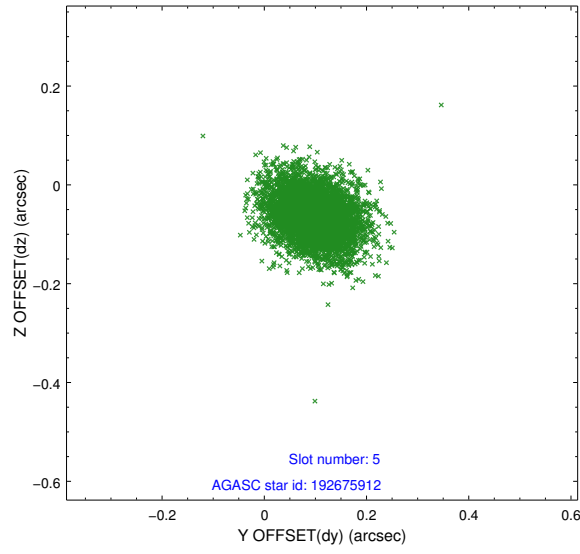
2.4.1 Slot 3



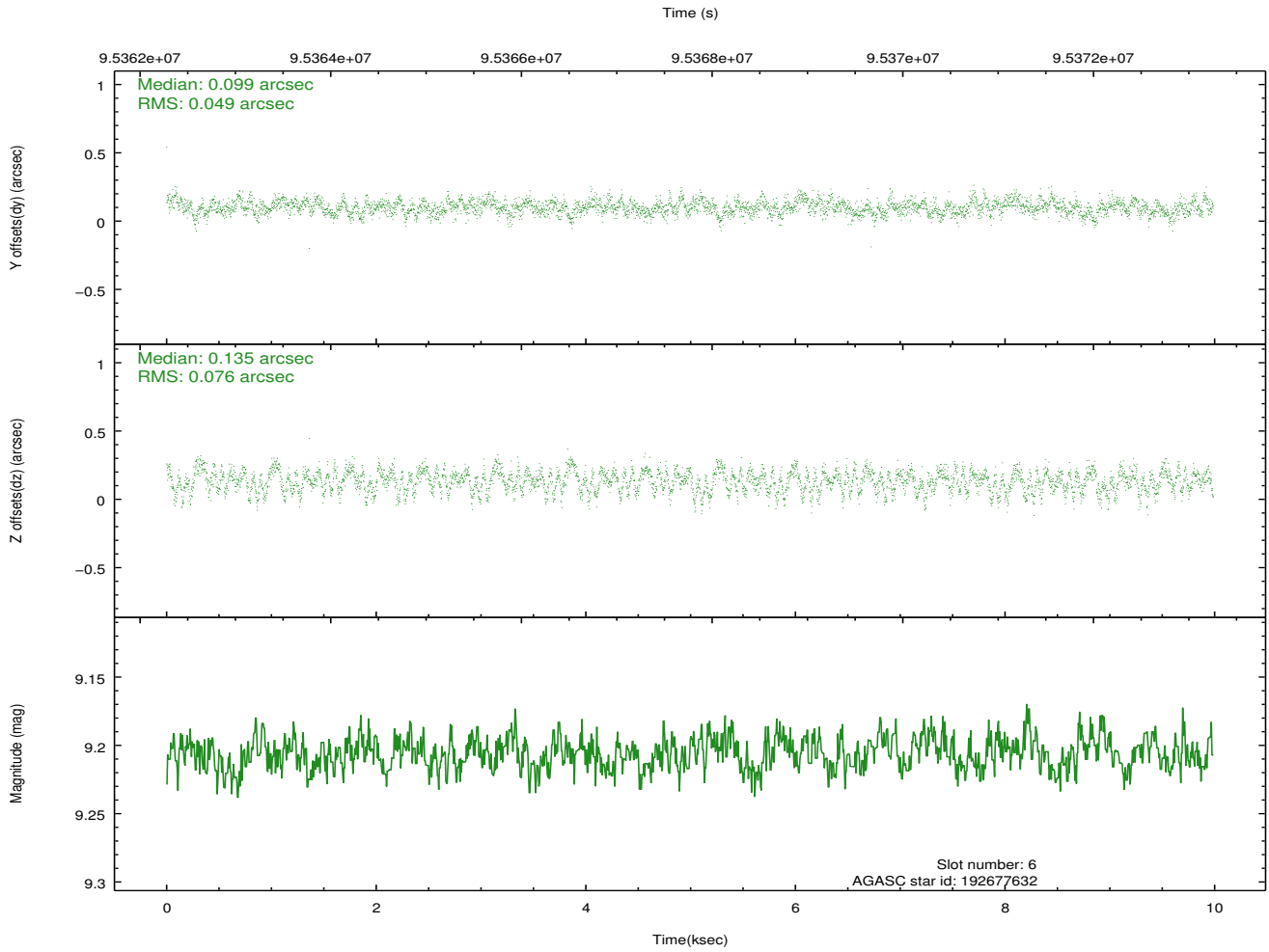
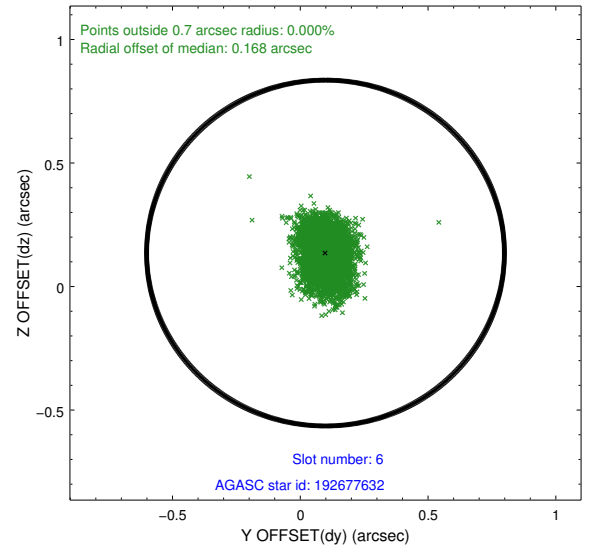
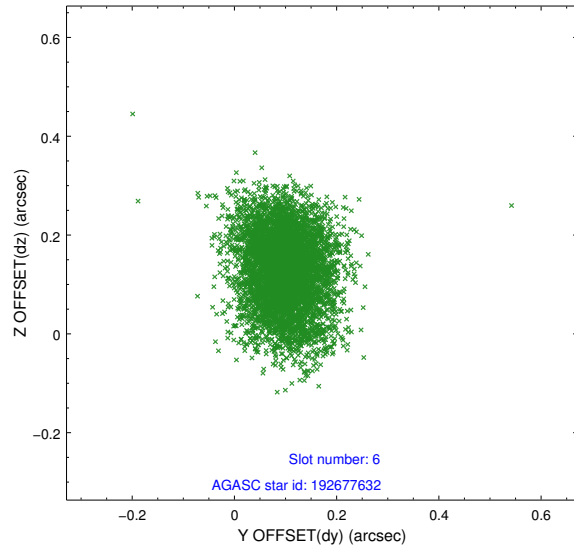
2.4.2 Slot 4



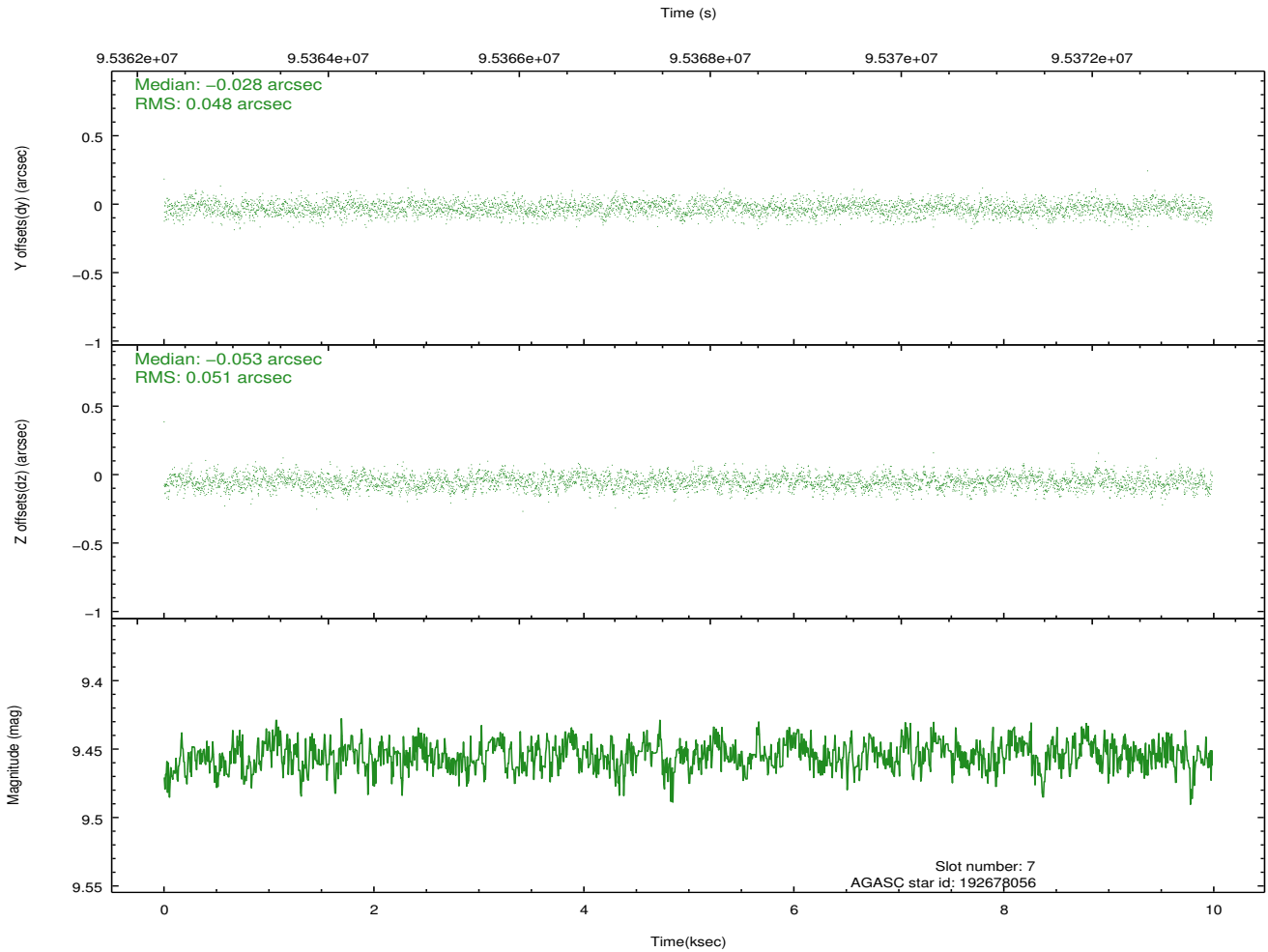
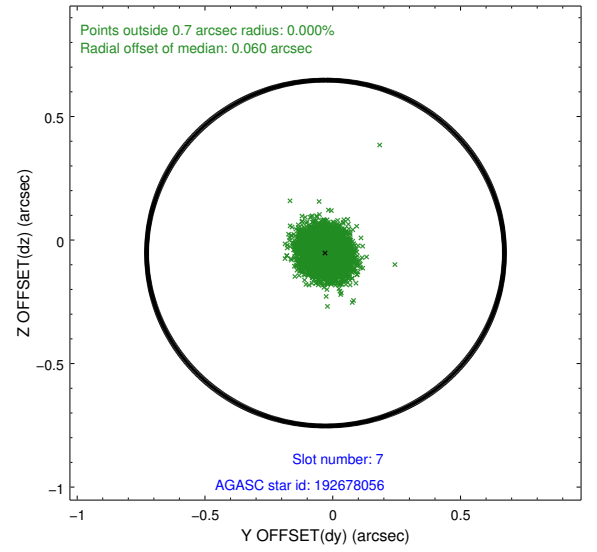
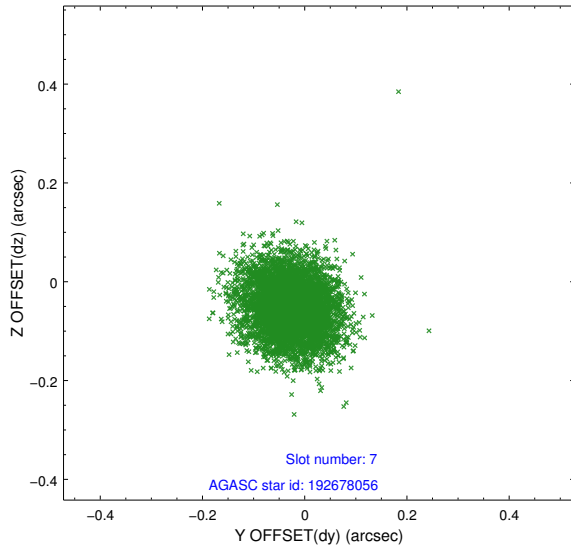
2.4.3 Slot 5



2.4.4 Slot 6

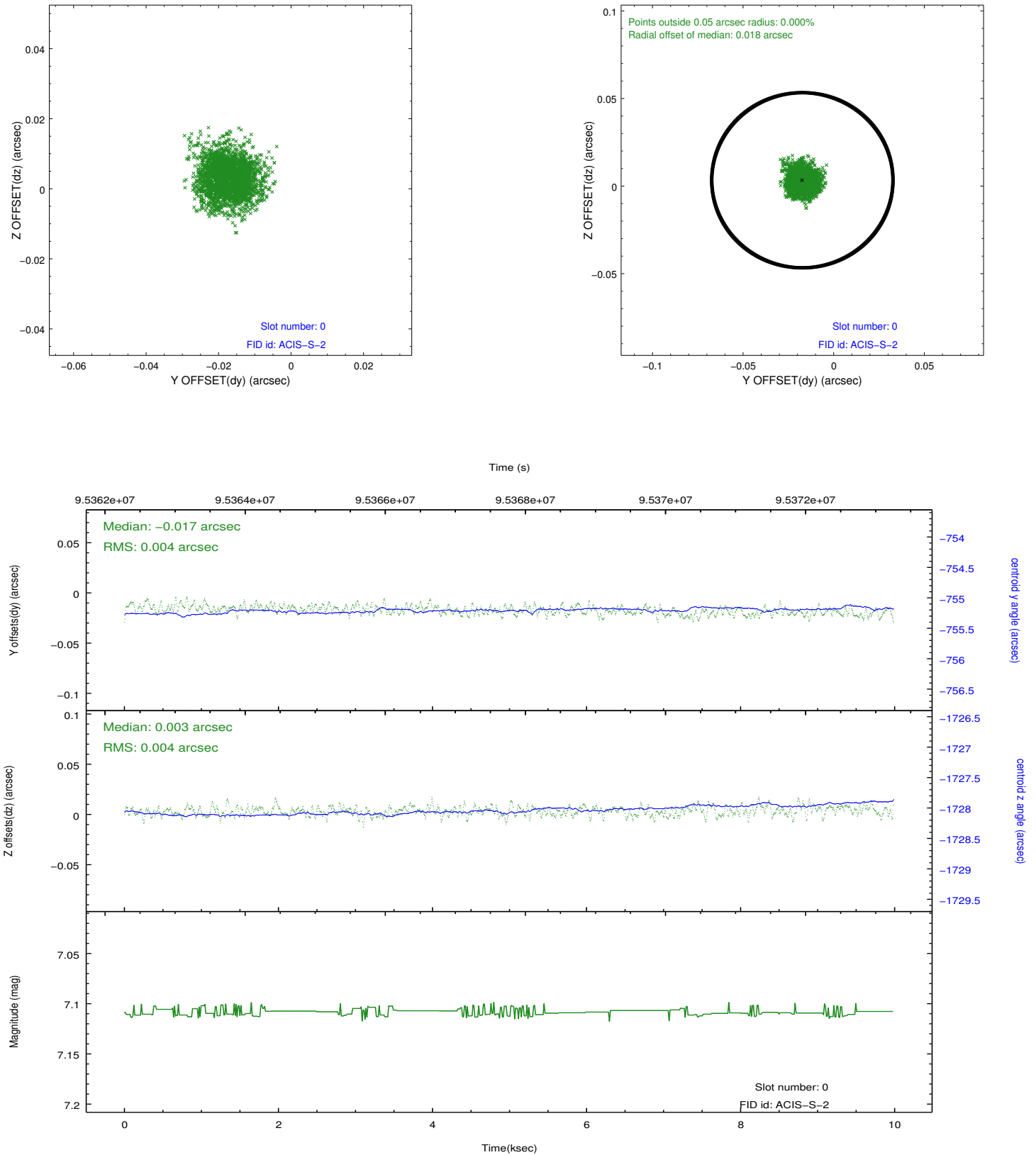


2.4.5 Slot 7

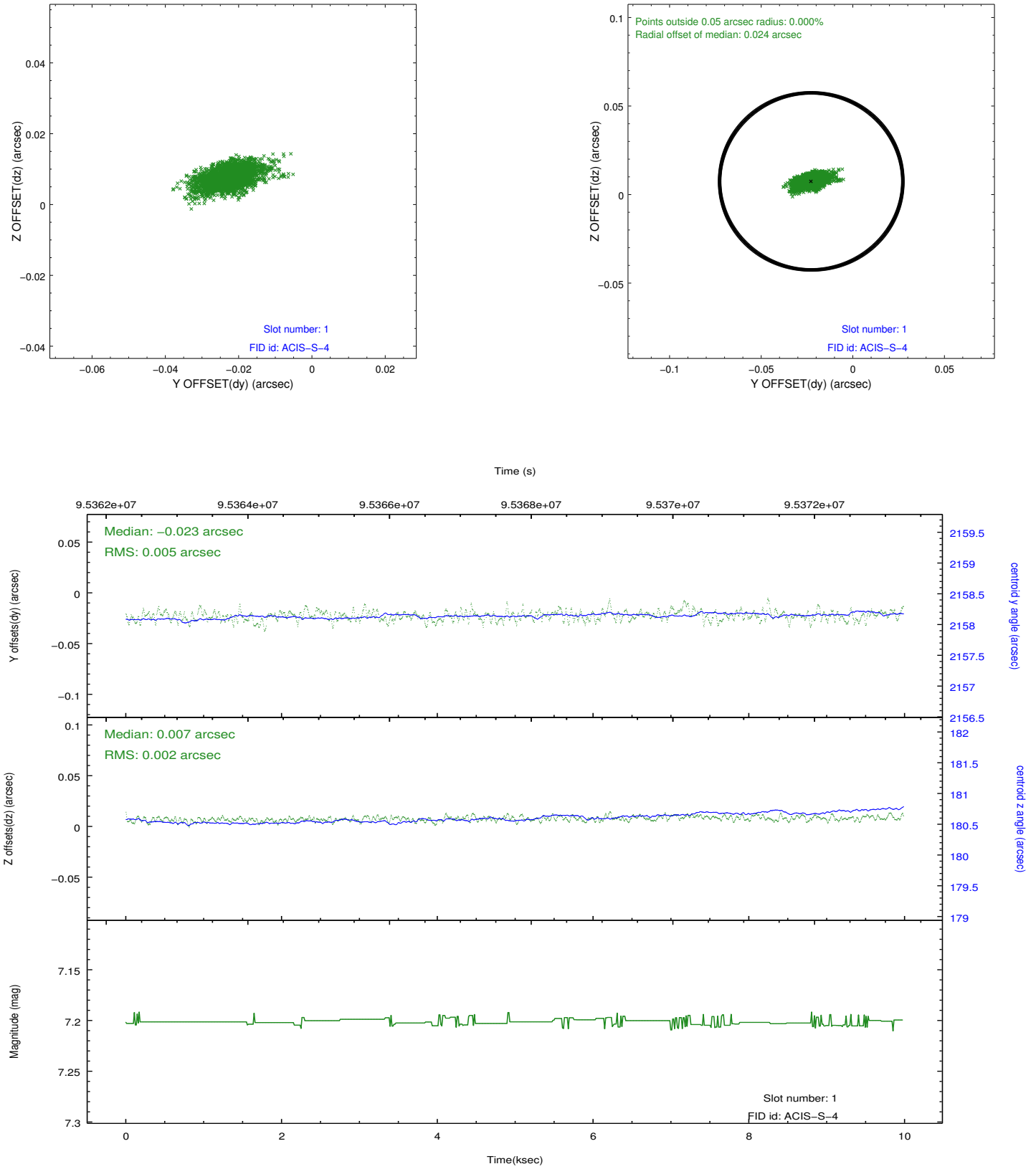


2.5 FID Slots

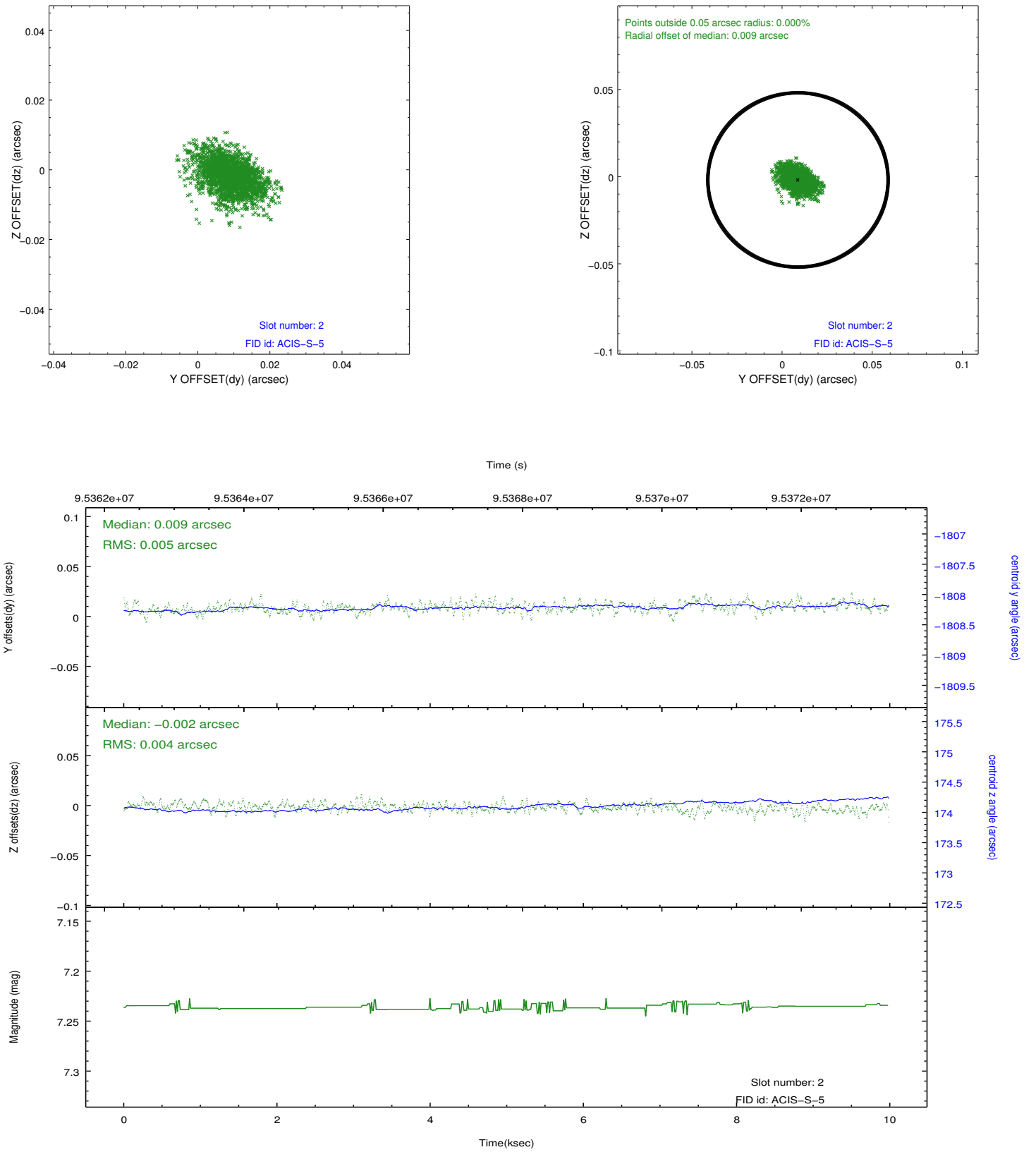
2.5.1 Slot 0



2.5.2 Slot 1



2.5.3 Slot 2



A Summary

A.1 Status

V&V Scientist	Jen Lauer
V&V Date (YYYY-MM-DD)	2012.09.14
V&V Edition	1
V&V Disposition and Status	OK
V&V Charge Time	9.984

A.2 Comments

Roll constraint met. Jet clearly visible.