

# V&V Reference Report

## L2 ASCDS Version : 8.4.5

Observation 2050 - L2 Version 3  
Chandra X-Ray Center

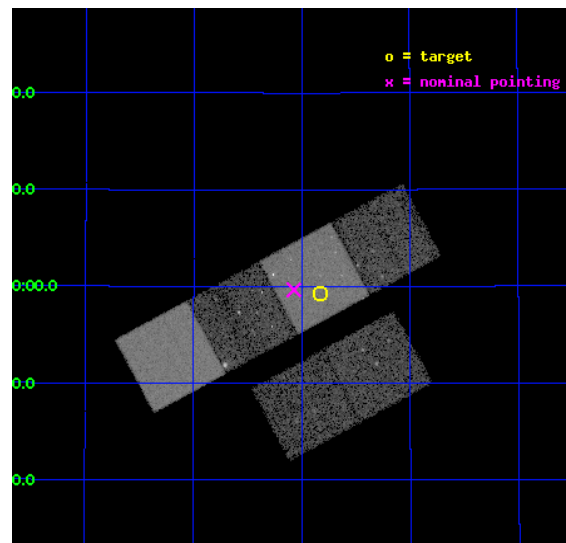
L2 Processing Date : Sep 11 2012

## Contents

<b>1</b>	<b>Front</b>	<b>2</b>
<b>2</b>	<b>OBI</b>	<b>3</b>
2.1	OBI . . . . .	3
2.1.1	Images . . . . .	3
2.1.2	Bias . . . . .	3
2.1.3	Parameters . . . . .	4
2.1.4	Events . . . . .	4
2.2	Compared Parameters . . . . .	5
2.3	Aspect . . . . .	6
2.4	Star Slots . . . . .	9
2.4.1	Slot 3 . . . . .	9
2.4.2	Slot 4 . . . . .	10
2.4.3	Slot 5 . . . . .	11
2.4.4	Slot 6 . . . . .	12
2.4.5	Slot 7 . . . . .	13
2.5	FID Slots . . . . .	14
2.5.1	Slot 0 . . . . .	14
2.5.2	Slot 1 . . . . .	15
2.5.3	Slot 2 . . . . .	16
<b>A</b>	<b>Summary</b>	<b>17</b>
A.1	Status . . . . .	17
A.2	Comments . . . . .	17

# 1 Front

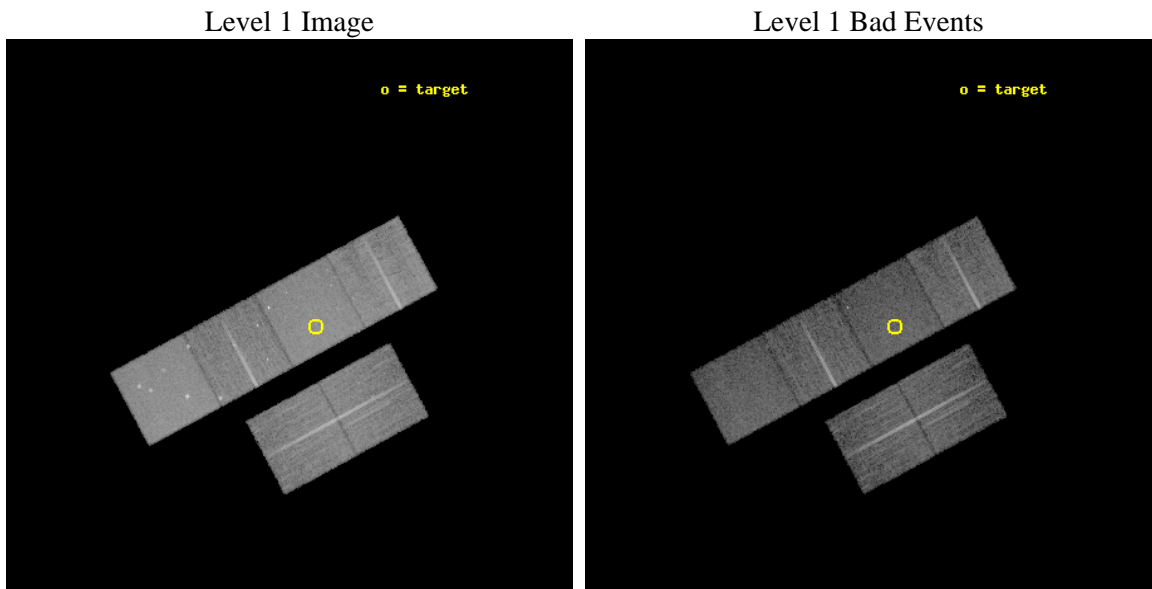
seq_num	600184	Sequence number
obs_id	2050	Observation id
title	2001: A SPACE CENSUS -- SUPERSOFT X-RAY SOURCES AND OTHER X-RAY SOURCES IN M31	Proposal title
observer	Dr. R. Di Stefano	Principal investigator
object	M31_2	Source name
dtcycle	0	&#160
cycle	P	events from which exps? Prim/Second/Both
ra_targ	10.457917	Observer's specified target RA [deg]
dec_targ	40.988889	Observer's specified target Dec [deg]
ra_nom	10.518409582966	Nominal RA [deg]
dec_nom	40.994397354926	Nominal Dec [deg]
roll_nom	331.66912528219	Nominal Roll [deg]
revision	3	Processing version of data
ontime	13206.400012285	Sum of GTIs [s]
livetime	13039.17262339	Livetime [s]
ontime2	13203.159081951	Sum of GTIs [s]
ontime3	13206.400012285	Sum of GTIs [s]
ontime5	13206.400012285	Sum of GTIs [s]
ontime6	13206.400012285	Sum of GTIs [s]
ontime7	13206.400012285	Sum of GTIs [s]
ontime8	13203.159052044	Sum of GTIs [s]
l2events	140086	Number of level 2 events



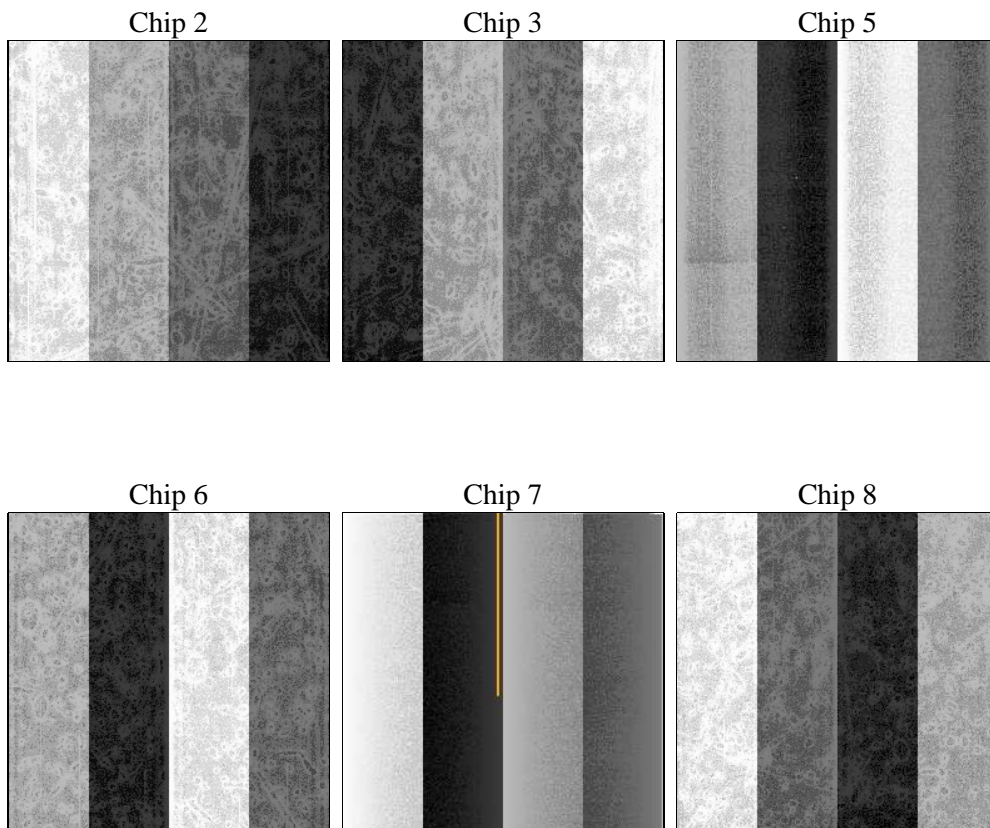
## 2 OBI

### 2.1 OBI

#### 2.1.1 Images



#### 2.1.2 Bias



### 2.1.3 Parameters

obi_num	0	Obi number	sched_exp_time	13500.000000	[s] Scheduled observation exposure time
ascdsver	8.4.5	Processing system revision	ontime	13206.400012285	Sum of GTIs [s]
caldsver	4.5.1.1	&#160	ontime2	13203.159081951	Sum of GTIs [s]
date	2012-09-12T00:01:09	Date and time of file creation	ontime3	13206.400012285	Sum of GTIs [s]
revision	3	Processing version of data	ontime5	13206.400012285	Sum of GTIs [s]
			ontime6	13206.400012285	Sum of GTIs [s]
			ontime7	13206.400012285	Sum of GTIs [s]
			ontime8	13203.159052044	Sum of GTIs [s]
			l1events	621361	Number of level 1 events

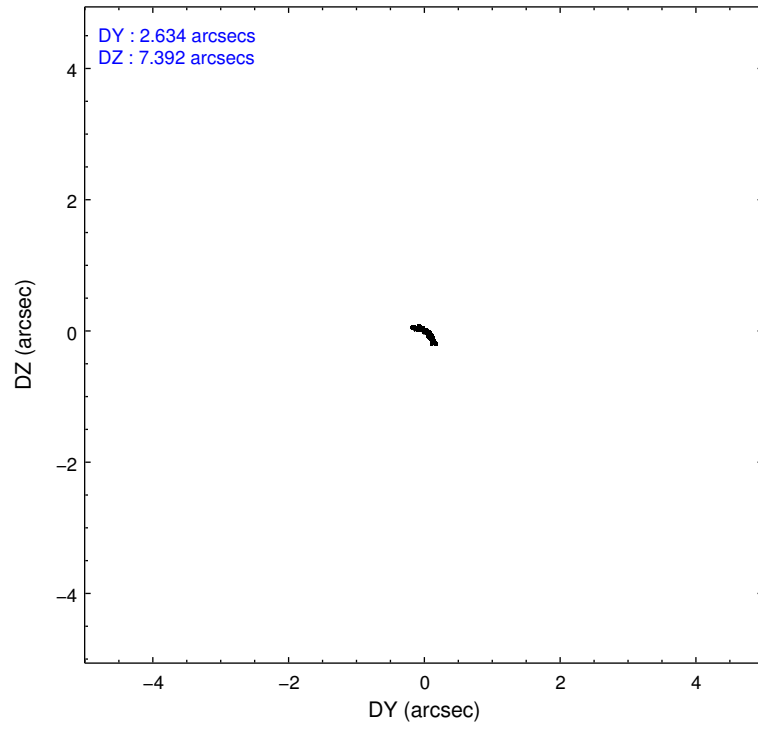
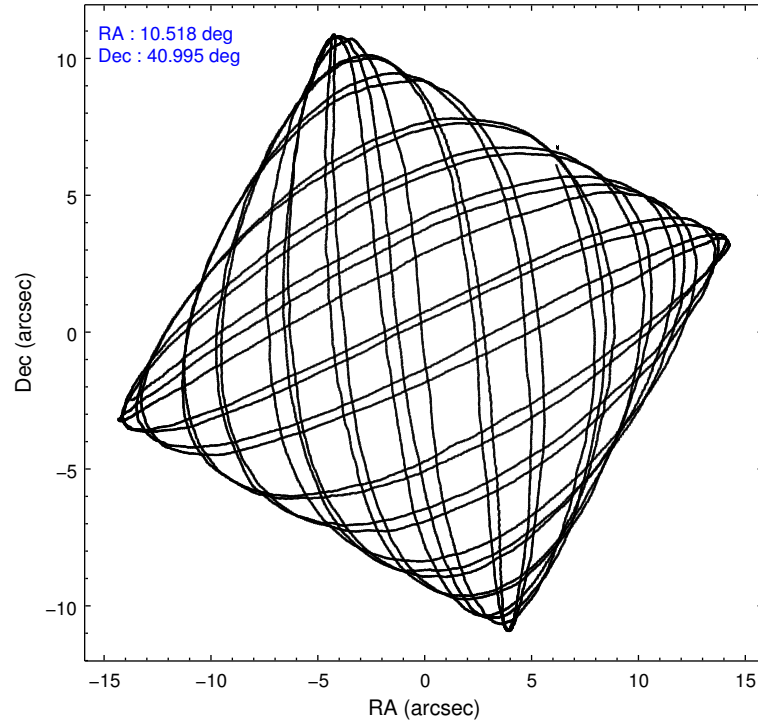
### 2.1.4 Events

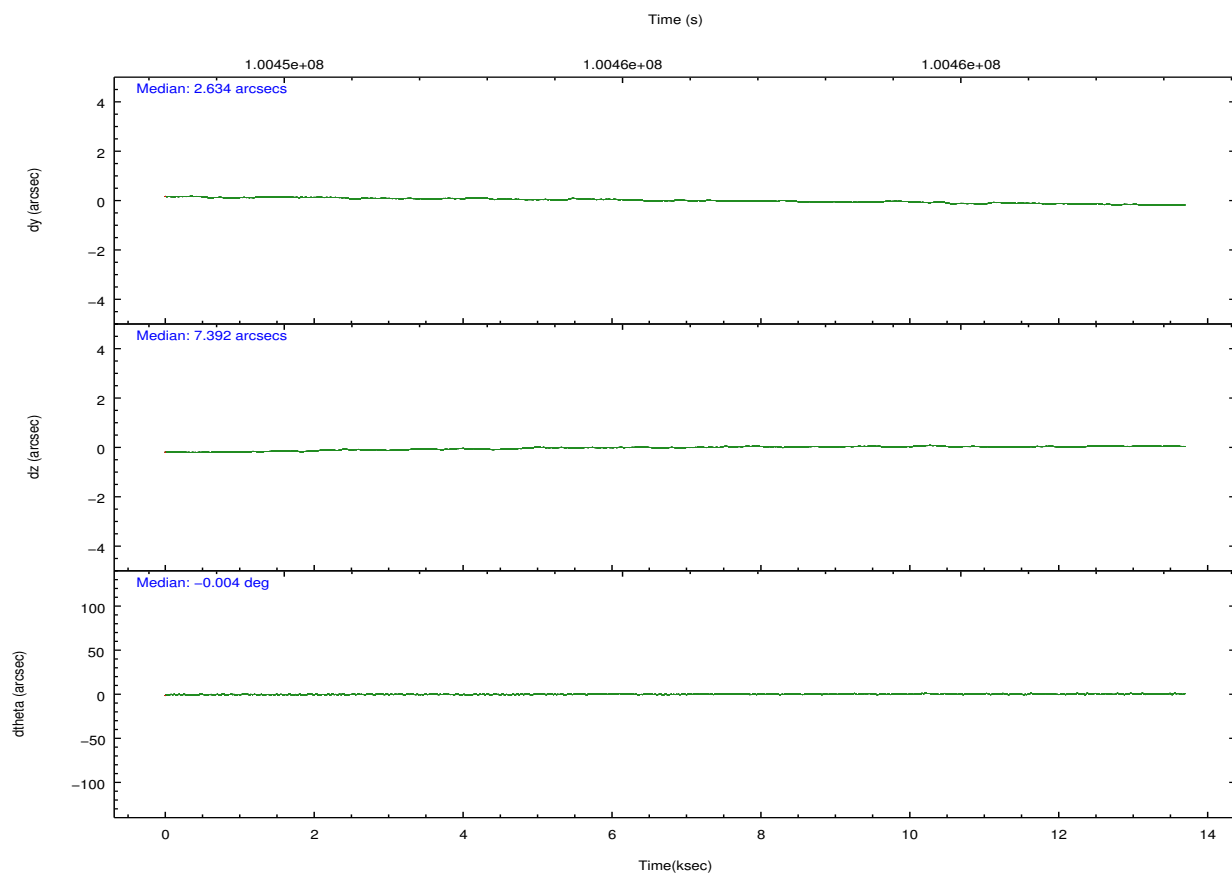
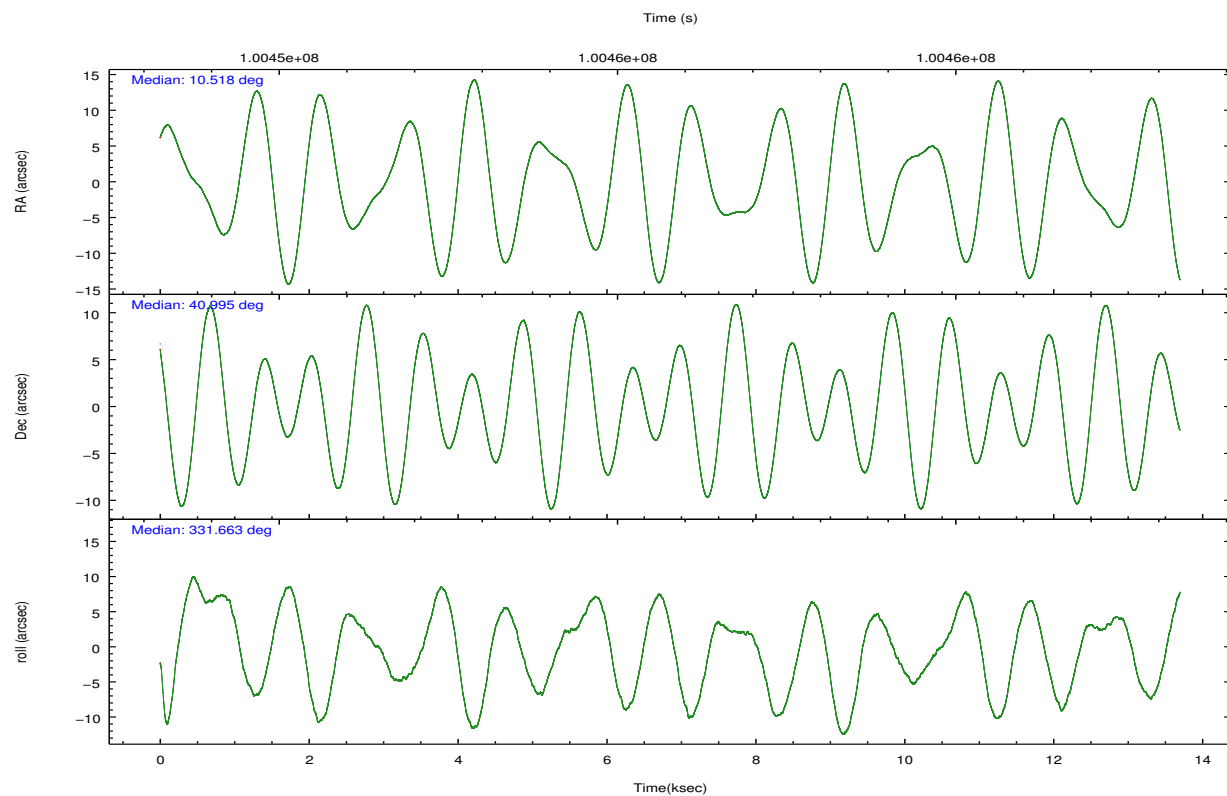
	ccd 2	ccd 3	ccd 5	ccd 6	ccd 7	ccd 8		ccd 2	ccd 3	ccd 5	ccd 6	ccd 7	ccd 8
level 1 events	90112	87412	124778	90386	116775	111898	grade 0 events	4312	4321	7591	6035	5452	7230
rejected events	80156	77295	67450	78002	65984	90098		4%	4%	6%	6%	4%	6%
rejected %	88%	88%	54%	86%	56%	80%	grade 1 events	32	45	223	50	144	78
								0%	0%	0%	0%	0%	0%
							grade 2 events	2113	2030	15802	2149	10147	4461
								2%	2%	12%	2%	8%	3%
							grade 3 events	898	995	2478	1090	4580	2373
								0%	1%	1%	1%	3%	2%
							grade 4 events	952	977	2470	1065	4740	2300
								1%	1%	1%	1%	4%	2%
							grade 5 events	2996	3356	9320	3572	10922	4586
								3%	3%	7%	3%	9%	4%
							grade 6 events	1692	1800	29019	2050	25896	5469
								1%	2%	23%	2%	22%	4%
							grade 7 events	77117	73888	57875	74375	54894	85401
								85%	84%	46%	82%	47%	76%

## 2.2 Compared Parameters

Parameter	Planned	Actual	Parameter	Planned	Actual
Instrument	ACIS	ACIS	Obspar format version number	7	7
Detector	ACIS-235678	ACIS-235678	Obspar file type	PREDICTED	ACTUAL
Grating	NONE	NONE	Obspar update status	NONE	UPDATED
Data mode	FAINT	FAINT	Number of optional ACIS chips dropped	0	0
Observation mode	POINTING	POINTING	On-chip summing requested	N	N
[deg] Pointing RA	10.482222	10.51840958296614	Subarray requested	NONE	NONE
[deg] Pointing Dec	40.993359	40.99439735492609	Alternating exposures requested	N	N
[deg] Pointing Roll	331.536243	331.669125282192	[s] Primary exposure time	0.000000	3.2
[mm] SIM focus pos	-0.684267	-0.6828225247311905			
[mm] SIM defocus	0	0.001444936568705701			
[mm] SIM translation stage pos	-190.132523	-190.1400660498719			
[mm] SIM translation stage offset	0	0.00754346686406393			
[s] Observation start time (MET)	100449124.184000	100448736.59779			
Observation start date	2001-03-08T14:31:00	2001-03-08T14:25:36			
[s] Observation end time (MET)	100462624.184000	100463386.92335			
Observation end date	2001-03-08T18:16:00	2001-03-08T18:29:46			
Read mode	TIMED	TIMED			

## 2.3 Aspect



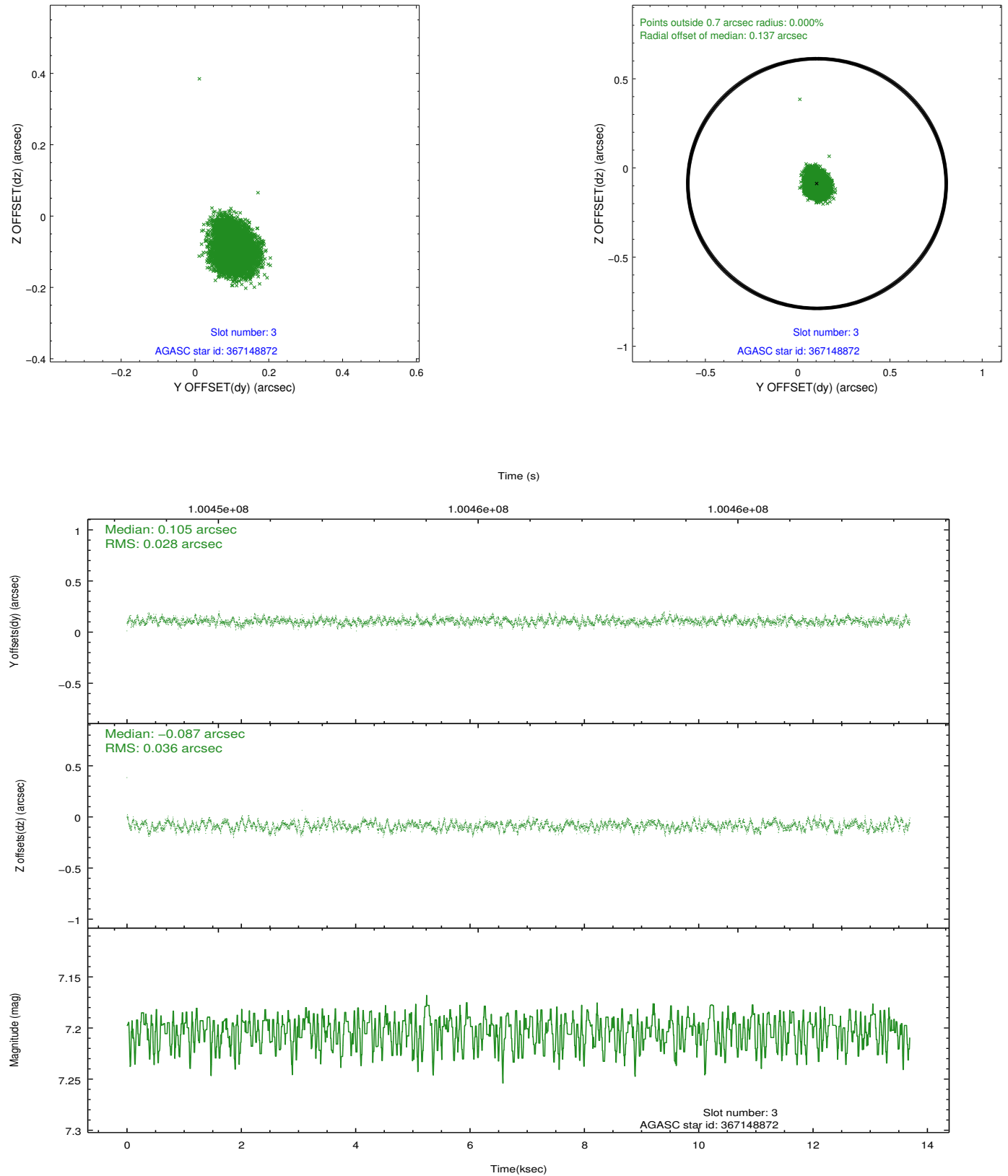


### Slot Statistics

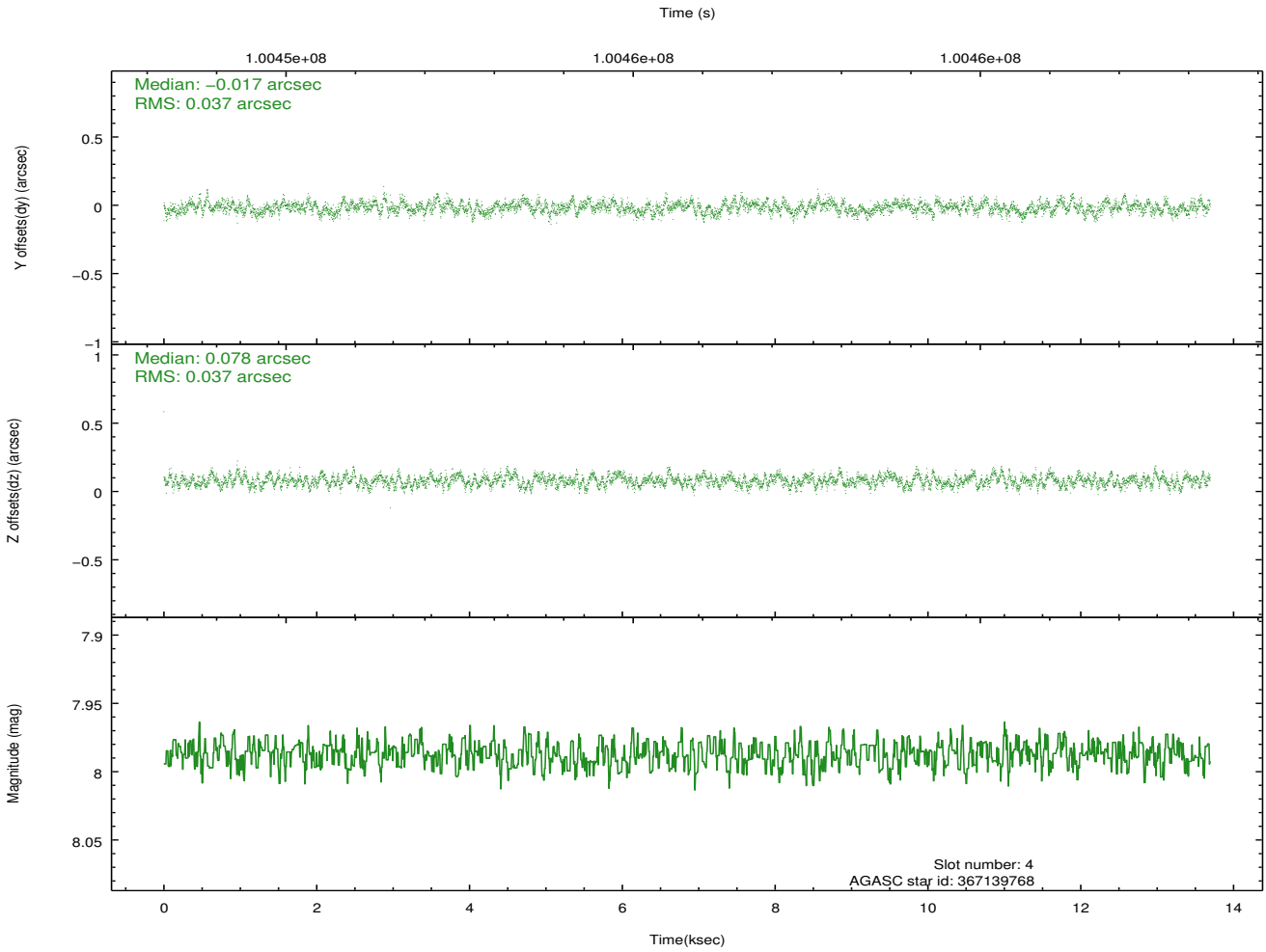
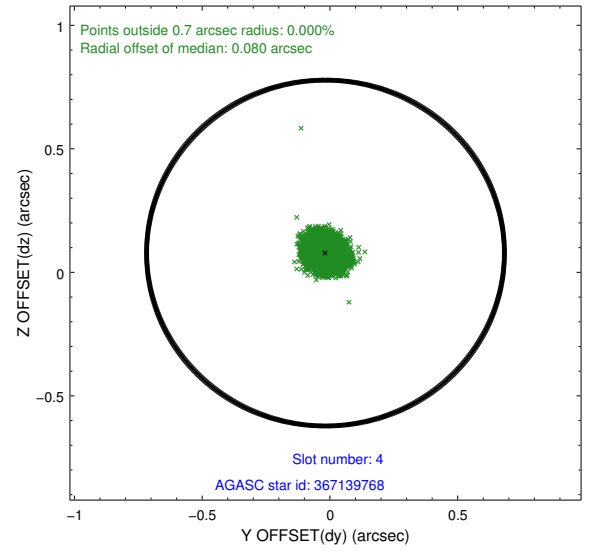
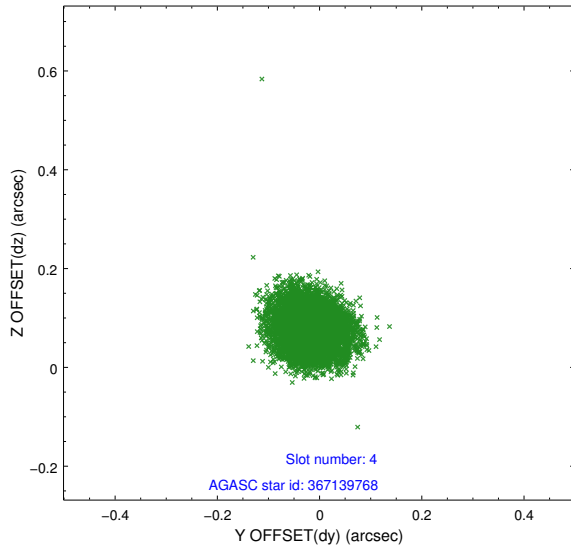
slot	status	id	mag	n_pts	med_dy	med_dz	dr1	dr2	ra	dec	mean_y	mean_z
0	FID	ACIS-S-2	7.11	3340	-0.005	-0.003	0.007	0.011	0.000000	0.000000	-755.28	-1728.54
1	FID	ACIS-S-4	7.19	3340	-0.047	0.003	0.008	0.014	0.000000	0.000000	2157.81	179.59
2	FID	ACIS-S-5	7.23	3341	0.020	0.009	0.010	0.016	0.000000	0.000000	-1807.64	173.67
3	GUIDE	367148872	7.20	6682	0.105	-0.087	0.049	0.078	10.505940	40.688258	581.24	-935.19
4	GUIDE	367139768	7.99	6682	-0.017	0.078	0.056	0.088	11.069715	40.685175	1936.85	-206.49
5	GUIDE	367144424	8.66	6680	-0.104	-0.027	0.075	0.121	10.464515	40.309136	1132.31	-2188.93
6	GUIDE	367146616	8.86	6679	0.038	0.039	0.084	0.139	11.418645	41.190163	1886.69	1843.48
7	GUIDE	367665472	9.51	6672	-0.017	-0.004	0.131	0.209	10.241611	41.730843	-1833.48	2026.47

## 2.4 Star Slots

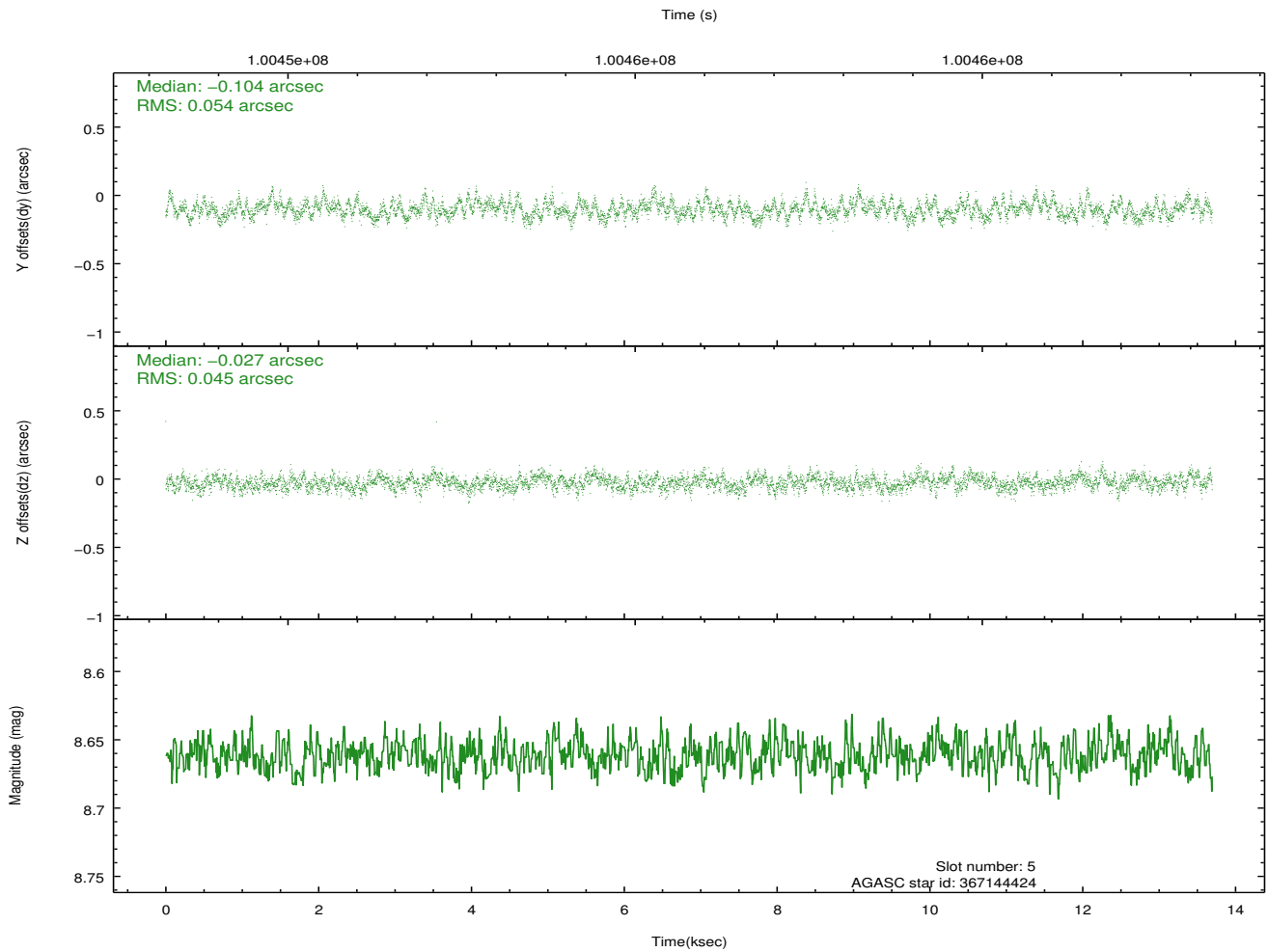
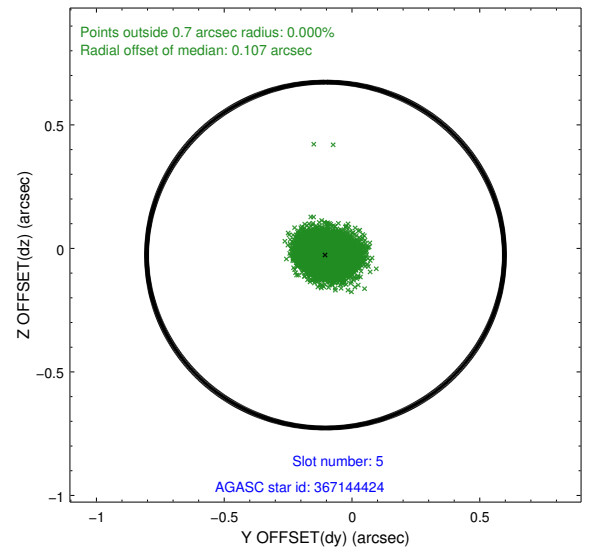
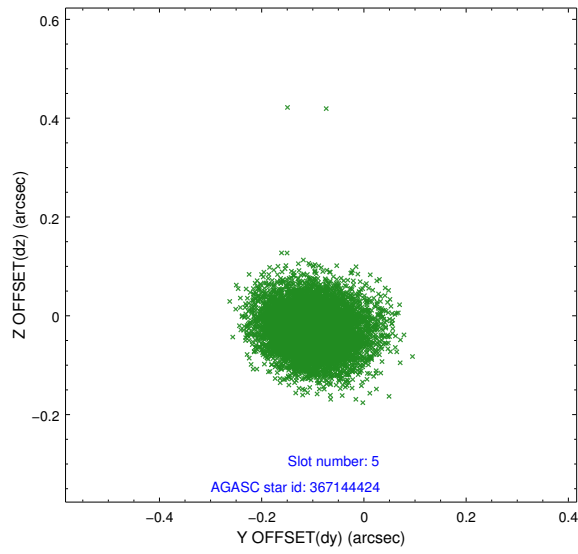
### 2.4.1 Slot 3



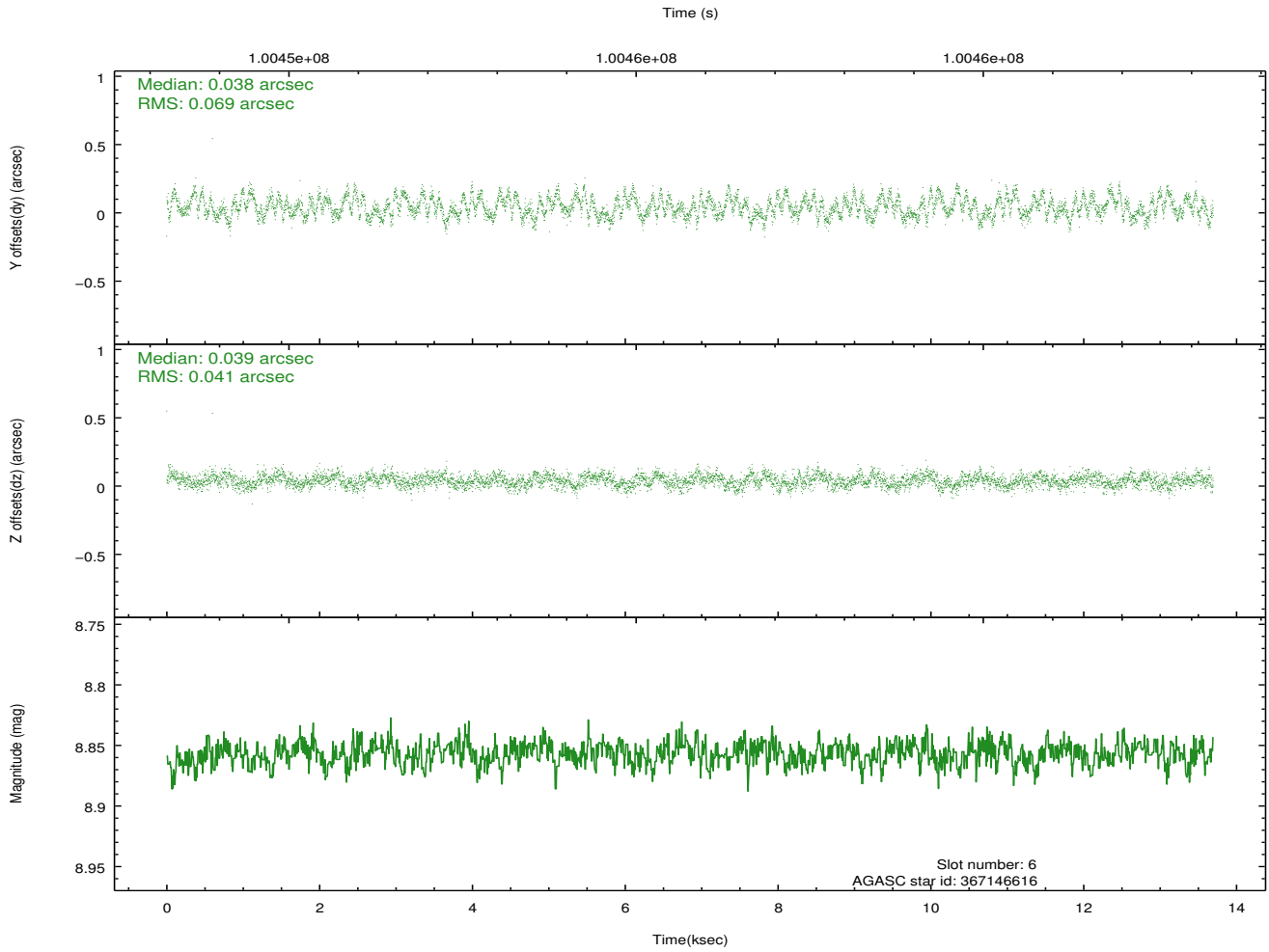
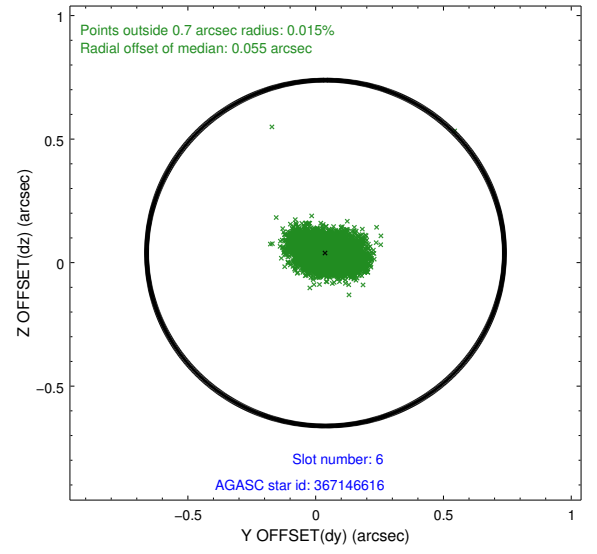
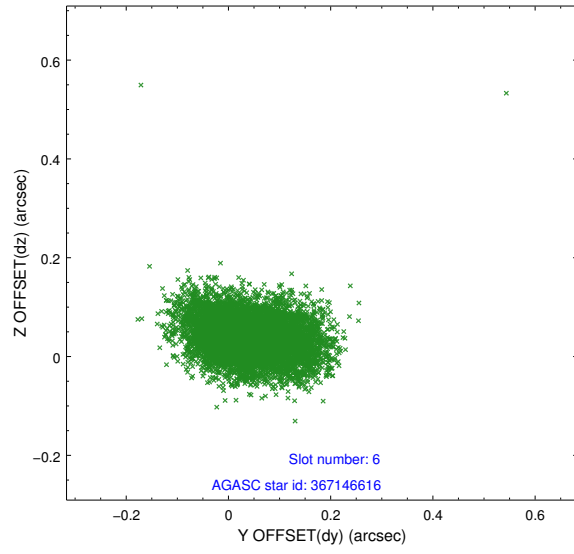
## 2.4.2 Slot 4



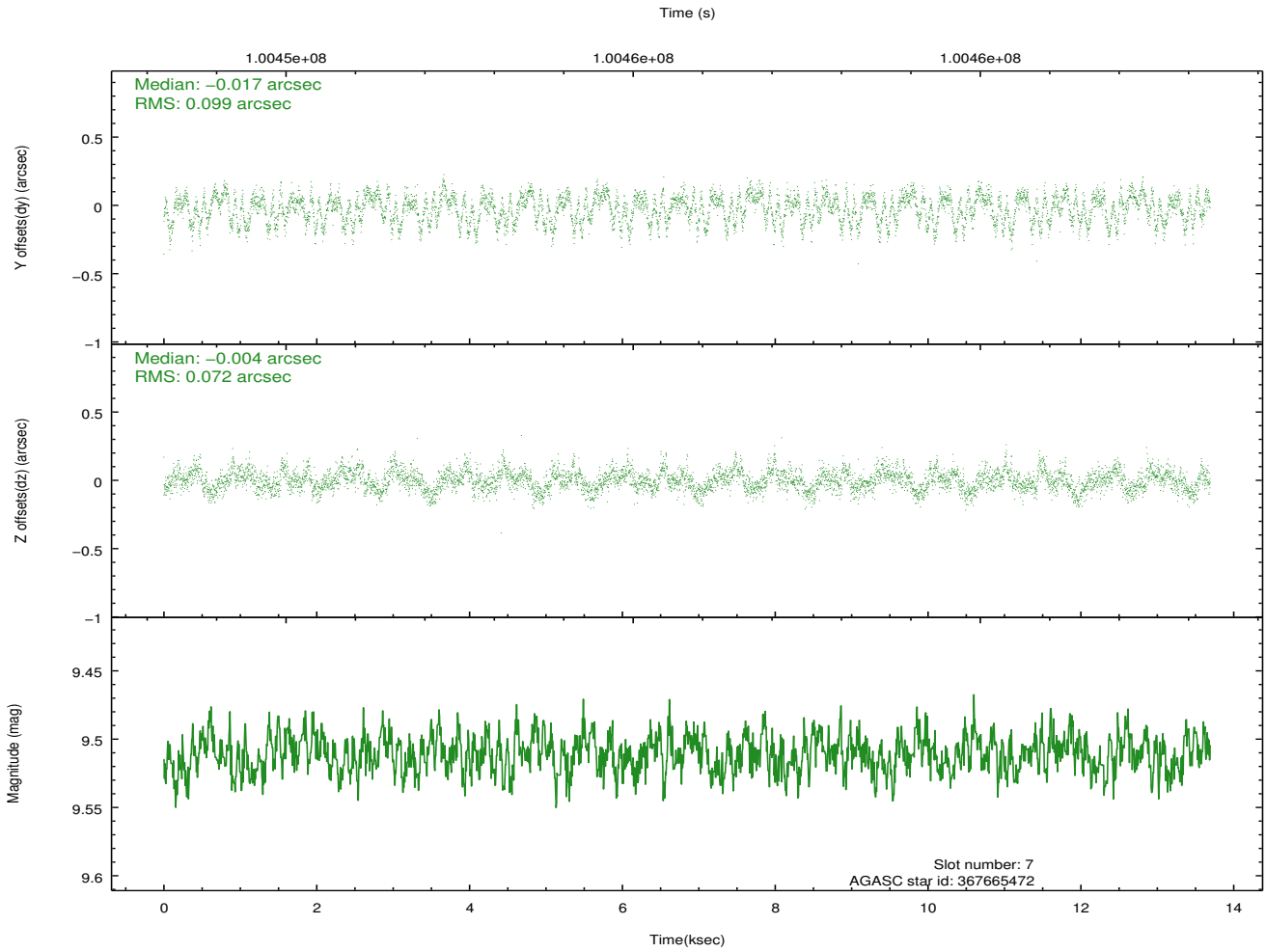
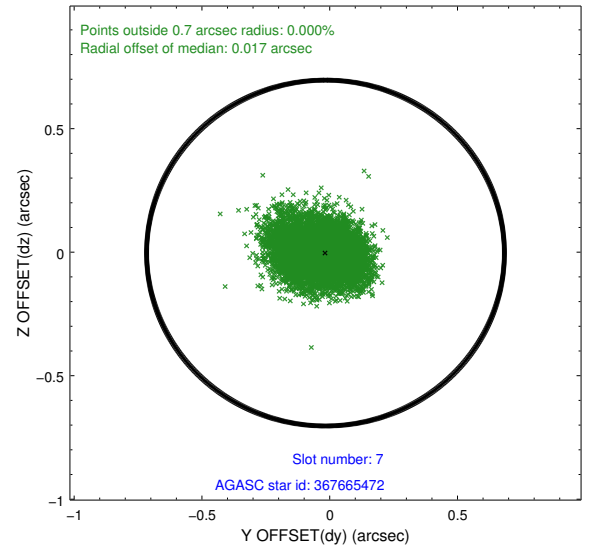
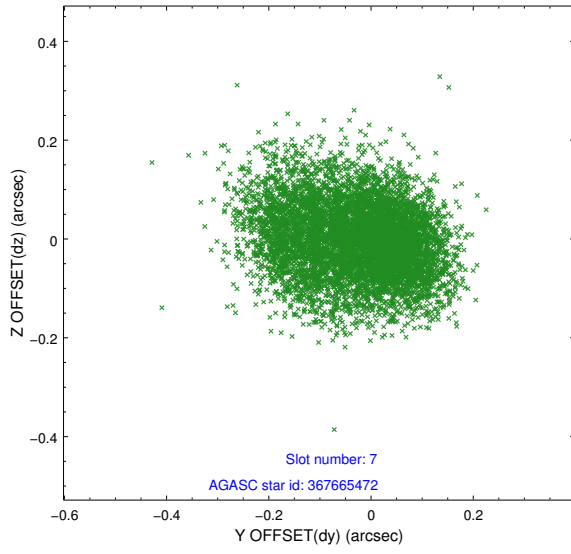
### 2.4.3 Slot 5



## 2.4.4 Slot 6

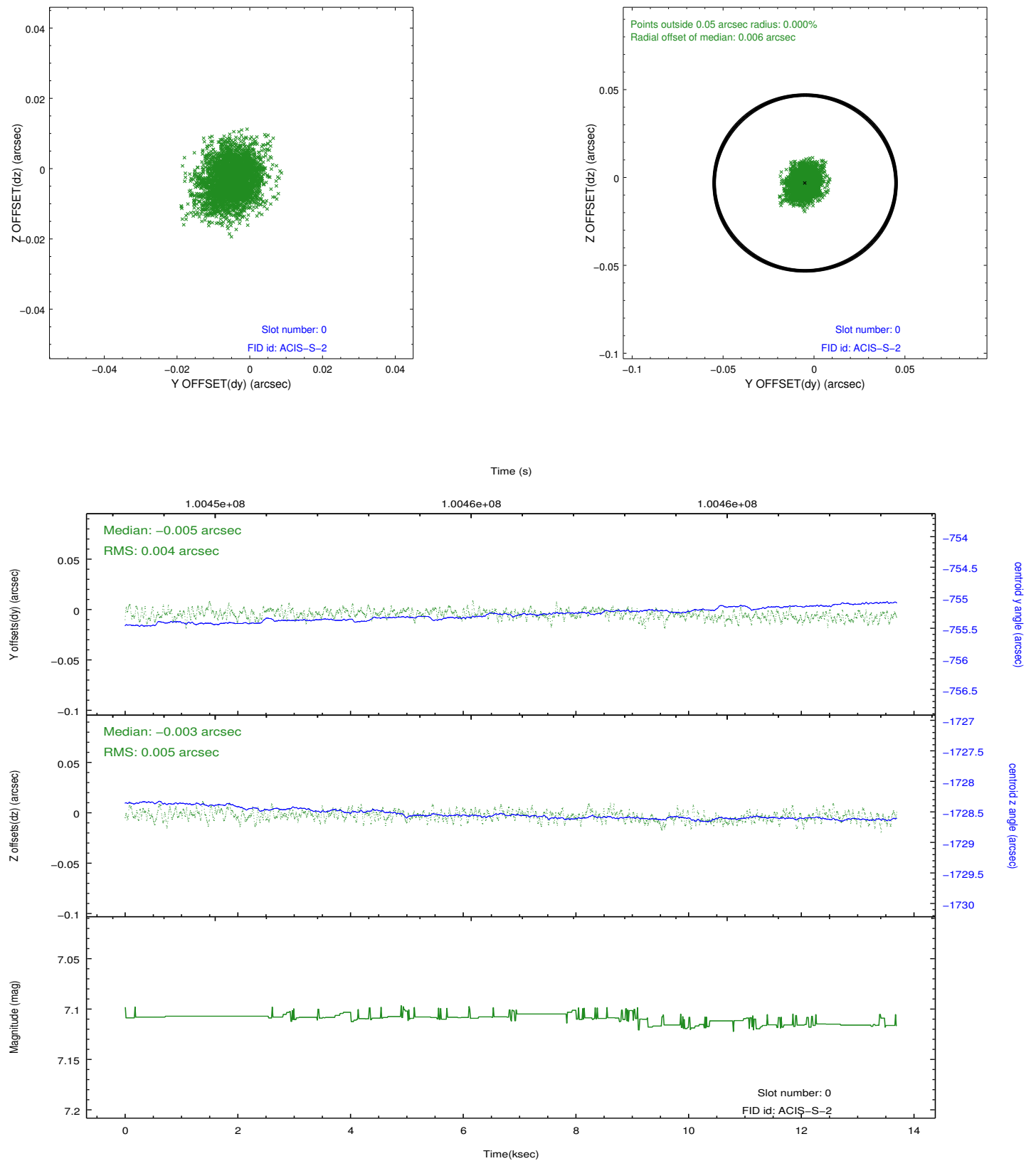


## 2.4.5 Slot 7

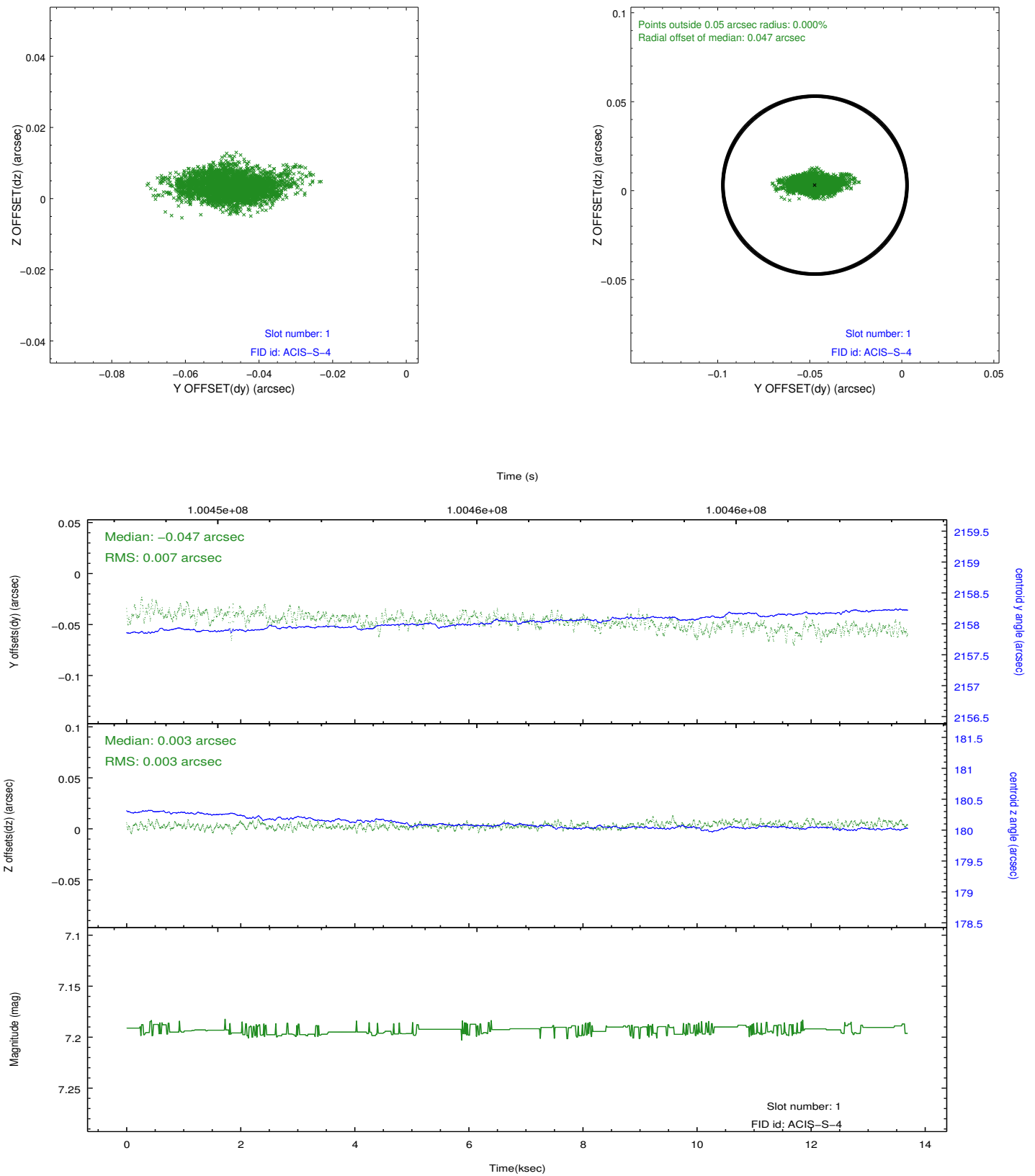


## 2.5 FID Slots

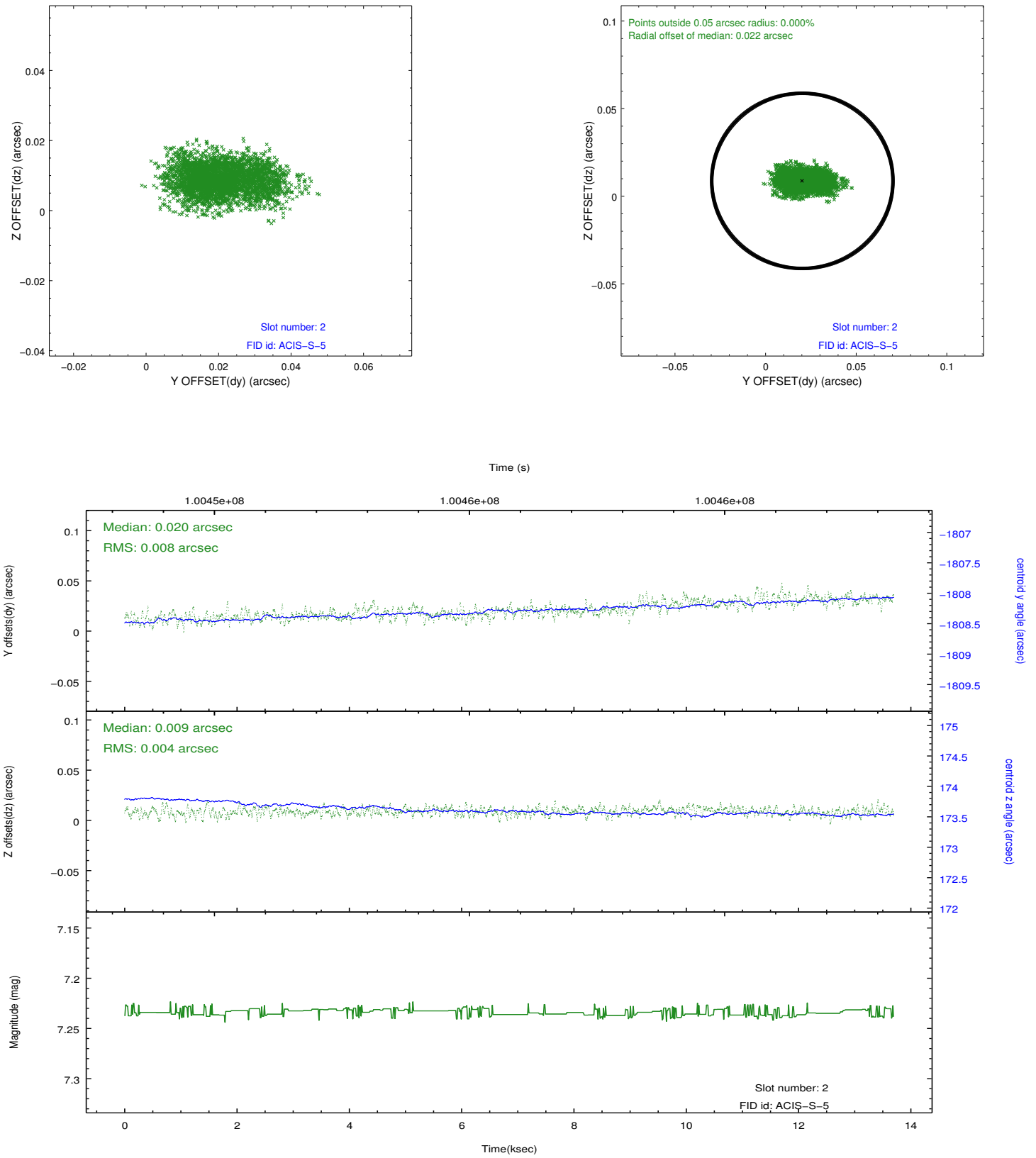
### 2.5.1 Slot 0



## 2.5.2 Slot 1



### 2.5.3 Slot 2



## A Summary

### A.1 Status

V&V Scientist	Beth Sundheim
V&V Date (YYYY-MM-DD)	2012.09.17
V&V Edition	1
V&V Disposition and Status	OK
V&V Charge Time	13.209

### A.2 Comments