

# V&V Reference Report

## L2 ASCDS Version : 7.6.9

Observation 2050 - L2 Version 001  
Chandra X-Ray Center

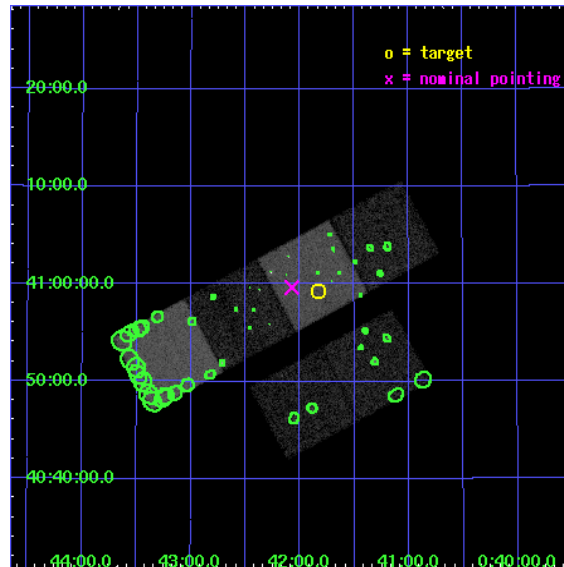
L2 Processing Date : Nov 7 2006

## Contents

<b>1</b>	<b>Front</b>	<b>2</b>
<b>2</b>	<b>OBI</b>	<b>3</b>
2.1	OBI . . . . .	3
2.1.1	Images . . . . .	3
2.1.2	Bias . . . . .	3
2.1.3	Parameters . . . . .	4
2.1.4	Events . . . . .	4
2.2	Compared Parameters . . . . .	5
2.3	Aspect . . . . .	6
2.4	Star Slots . . . . .	9
2.4.1	Slot 3 . . . . .	9
2.4.2	Slot 4 . . . . .	10
2.4.3	Slot 5 . . . . .	11
2.4.4	Slot 6 . . . . .	12
2.4.5	Slot 7 . . . . .	13
2.5	FID Slots . . . . .	14
2.5.1	Slot 0 . . . . .	14
2.5.2	Slot 1 . . . . .	15
2.5.3	Slot 2 . . . . .	16
<b>3</b>	<b>Point Sources</b>	<b>17</b>
<b>A</b>	<b>Summary</b>	<b>18</b>
A.1	Status . . . . .	18
A.2	Comments . . . . .	18

# 1 Front

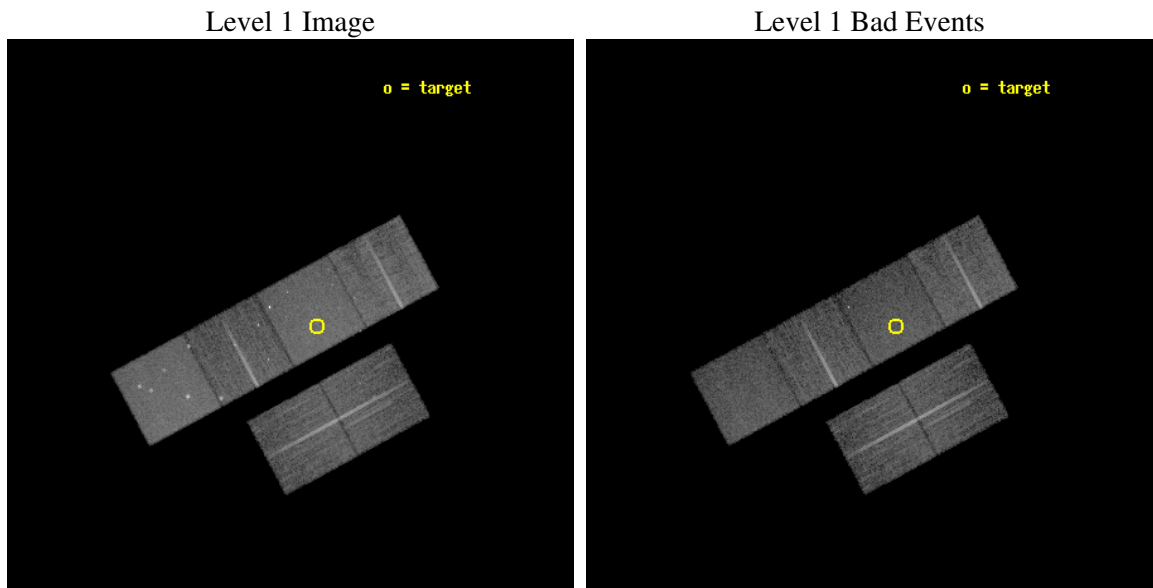
seq_num	600184
obs_id	2050
title	2001: A SPACE CENSUS -- SUPERSOFT X-RAY SOURCES AND OTHER X-RAY SOURCES IN M31
observer	Dr Rosanne Di Stefano
object	M31_2
dtcycle	0
cycle	P
ra_targ	10.457917
dec_targ	40.988889
ra_nom	10.518409578723
dec_nom	40.994397353154
roll_nom	331.6691252847
revision	2
ontime	13206.400012299
livetime	13039.172623404
ontime2	13203.159081966
ontime3	13206.400012299
ontime5	13206.400012299
ontime6	13206.400012299
ontime7	13206.400012299
ontime8	13203.159052059
l2events	135056



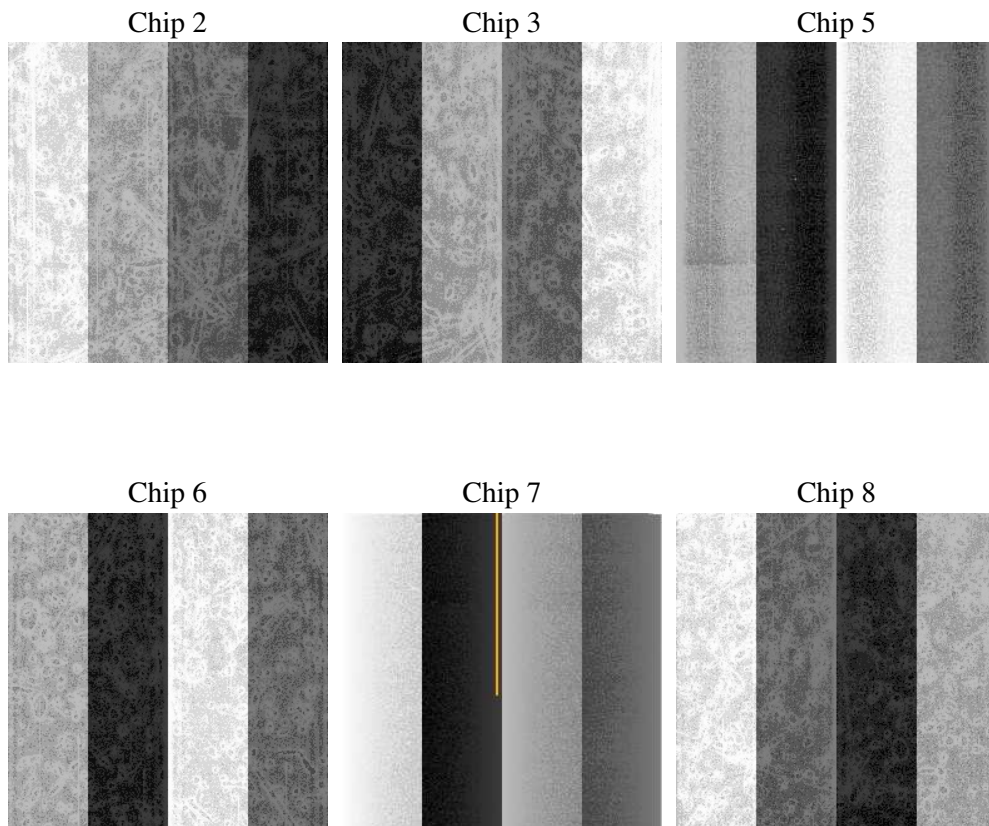
## 2 OBI

### 2.1 OBI

#### 2.1.1 Images



#### 2.1.2 Bias



### 2.1.3 Parameters

obi_num	0
ascdsver	7.6.9
caldbver	3.2.3
date	2006-11-07T22:45:02
revision	2

sched_exp_time	13500.000000
ontime	13213.542150497
ontime2	13210.3012501
ontime3	13213.542150497
ontime5	13213.542150497
ontime6	13213.542150497
ontime7	13213.542150497
ontime8	13210.301080585
l1events	621361

### 2.1.4 Events

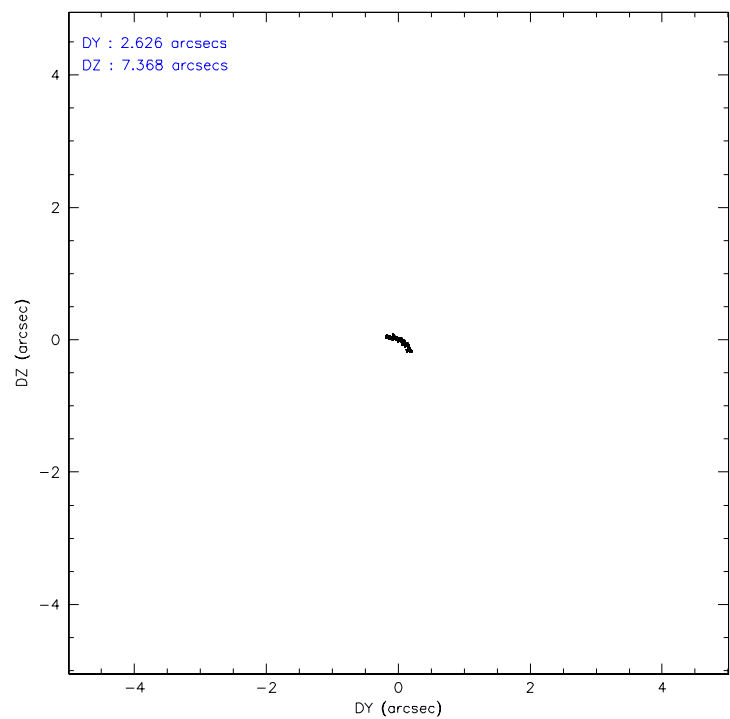
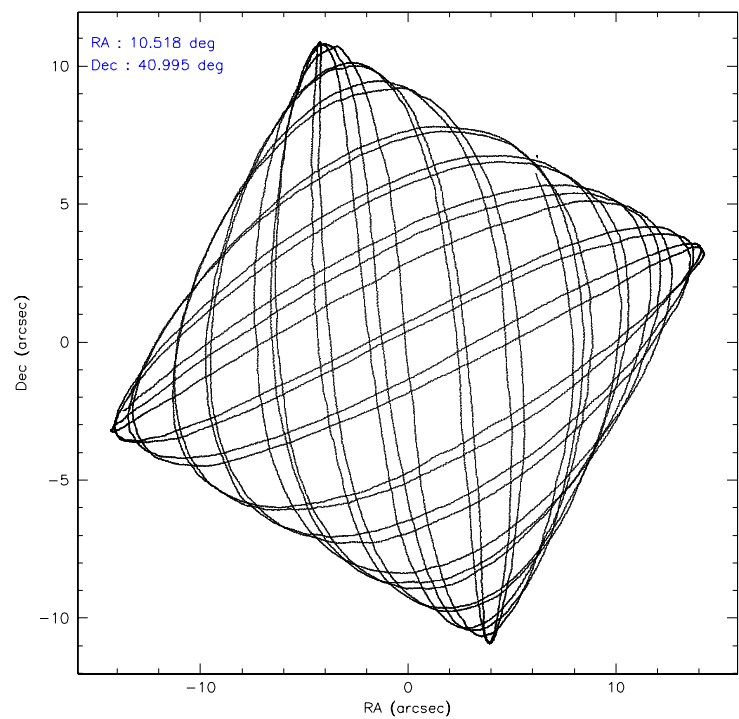
	ccd 2	ccd 3	ccd 5	ccd 6	ccd 7	ccd 8
level 1 events	90112	87412	124778	90386	116775	111898
rejected events	80153	77294	69406	78002	69364	90094
rejected %	88%	88%	55%	86%	59%	80%

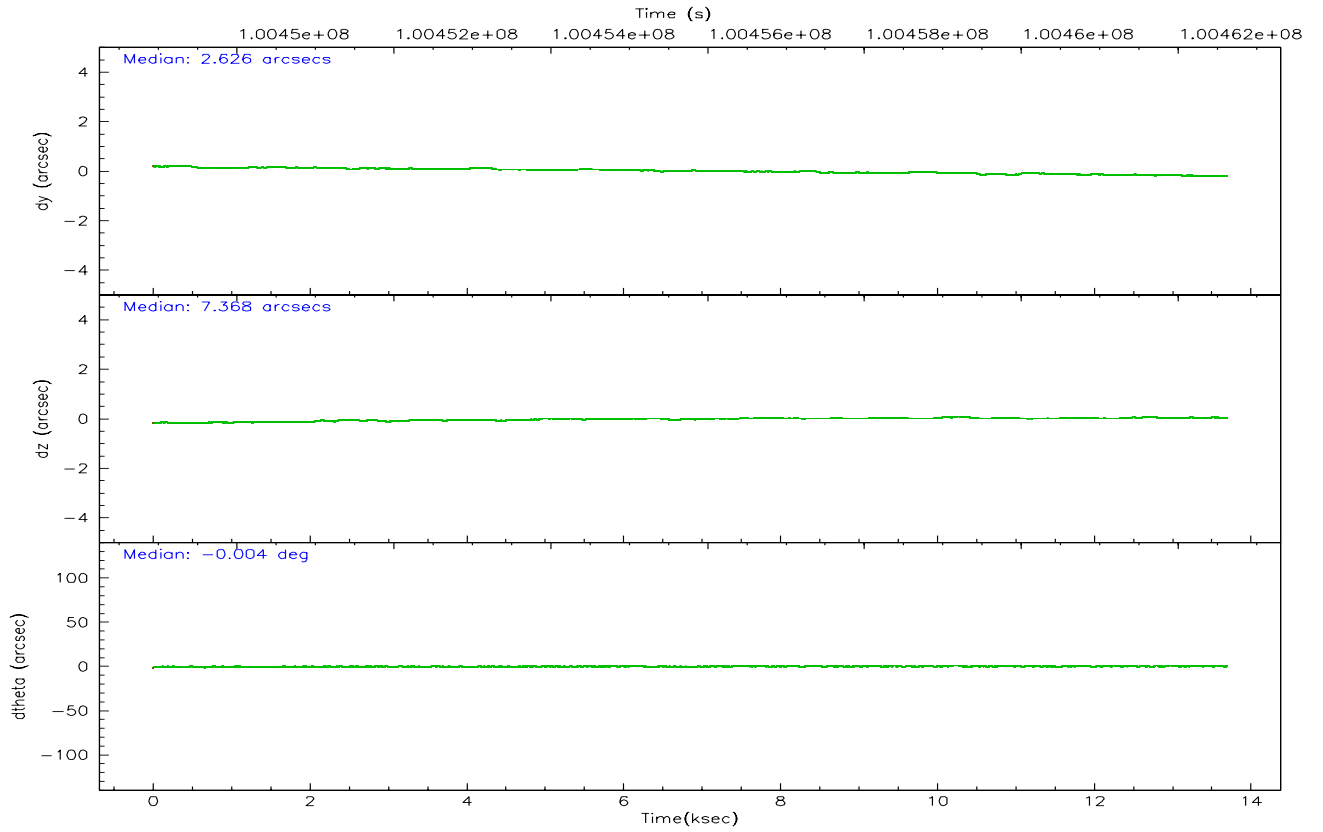
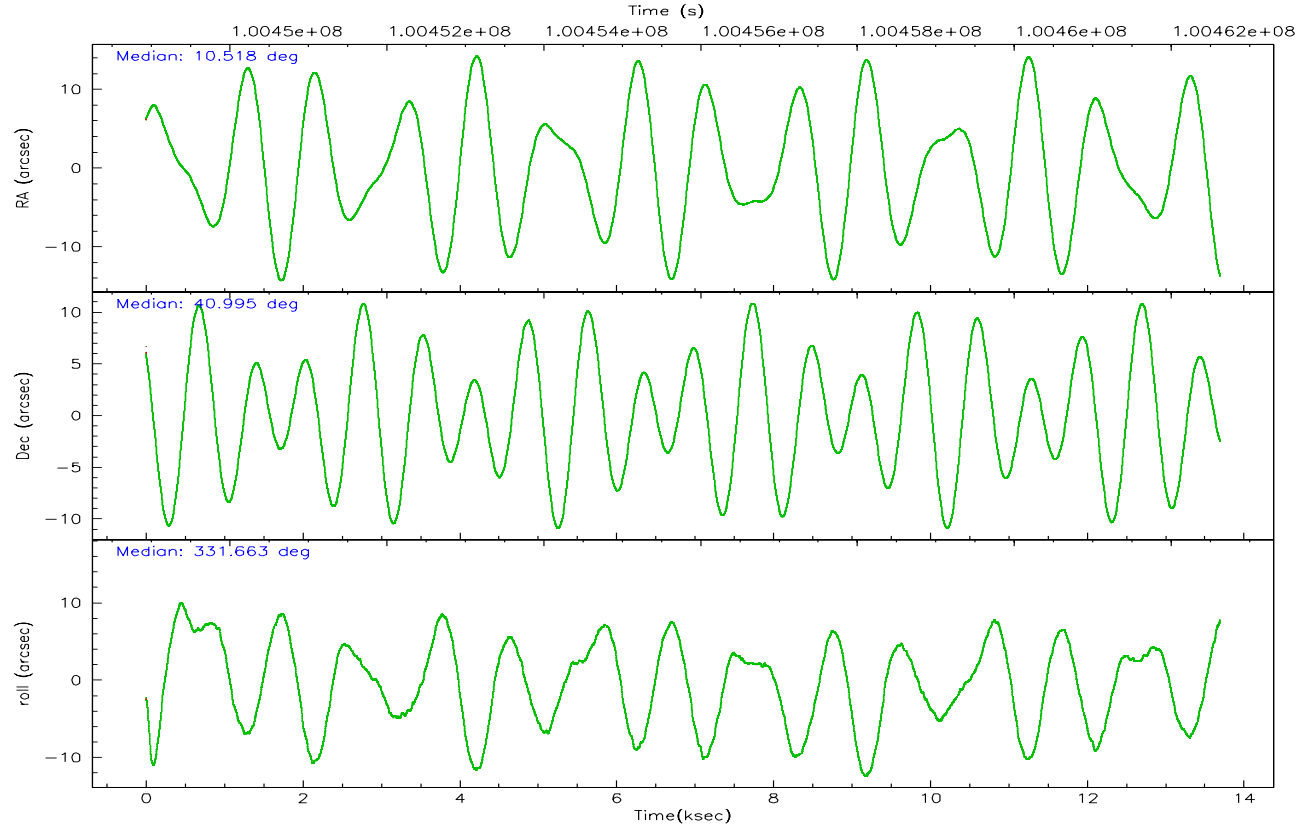
	ccd 2	ccd 3	ccd 5	ccd 6	ccd 7	ccd 8
grade 0 events	4314	4323	6061	6037	3639	7230
	4%	4%	4%	6%	3%	6%
grade 1 events	32	45	188	50	104	78
	0%	0%	0%	0%	0%	0%
grade 2 events	2111	2028	16126	2147	11562	4461
	2%	2%	12%	2%	9%	3%
grade 3 events	898	995	1272	1090	2730	2373
	0%	1%	1%	1%	2%	2%
grade 4 events	952	977	1321	1065	2747	2300
	1%	1%	1%	1%	2%	2%
grade 5 events	2996	3357	5871	3573	7889	4589
	3%	3%	4%	3%	6%	4%
grade 6 events	1692	1799	30623	2050	26756	5468
	1%	2%	24%	2%	22%	4%
grade 7 events	77117	73888	63316	74374	61348	85399
	85%	84%	50%	82%	52%	76%

## 2.2 Compared Parameters

Parameter	Planned	Actual	Parameter	Planned	Actual
Instrument	ACIS	ACIS	Obspar format version number	6	6
Detector	ACIS-235678	ACIS-235678	Obspar file type	PREDICTED	ACTUAL
Grating	NONE	NONE	Obspar update status	NONE	UPDATED
Data mode	FAINT	FAINT	Number of optional ACIS chips dropped	0	0
Observation mode	POINTING	POINTING	On-chip summing requested	N	N
Pointing RA	10.482222	10.51840957872342	Subarray requested	NONE	NONE
Pointing Dec	40.993359	40.99439735315403	Alternating exposures requested	N	N
Pointing Roll	331.536243	331.6691252846955	Primary exposure time	0.000000	3.2
SIM focus pos (mm)	-0.684267	-0.6828225247311905			
SIM defocus (mm)	0	0.001444936568705701			
SIM translation stage pos (mm)	-190.132523	-190.1400660498719			
SIM translation stage offset (mm)	0	0.00754346686406393			
Observation start time	100449124.184000	100448736.59779			
Observation start date	2001-03-08T14:31:00	2001-03-08T14:25:36			
Observation end time	100462624.184000	100463386.92335			
Observation end date	2001-03-08T18:16:00	2001-03-08T18:29:46			
Read mode	TIMED	TIMED			

## 2.3 Aspect





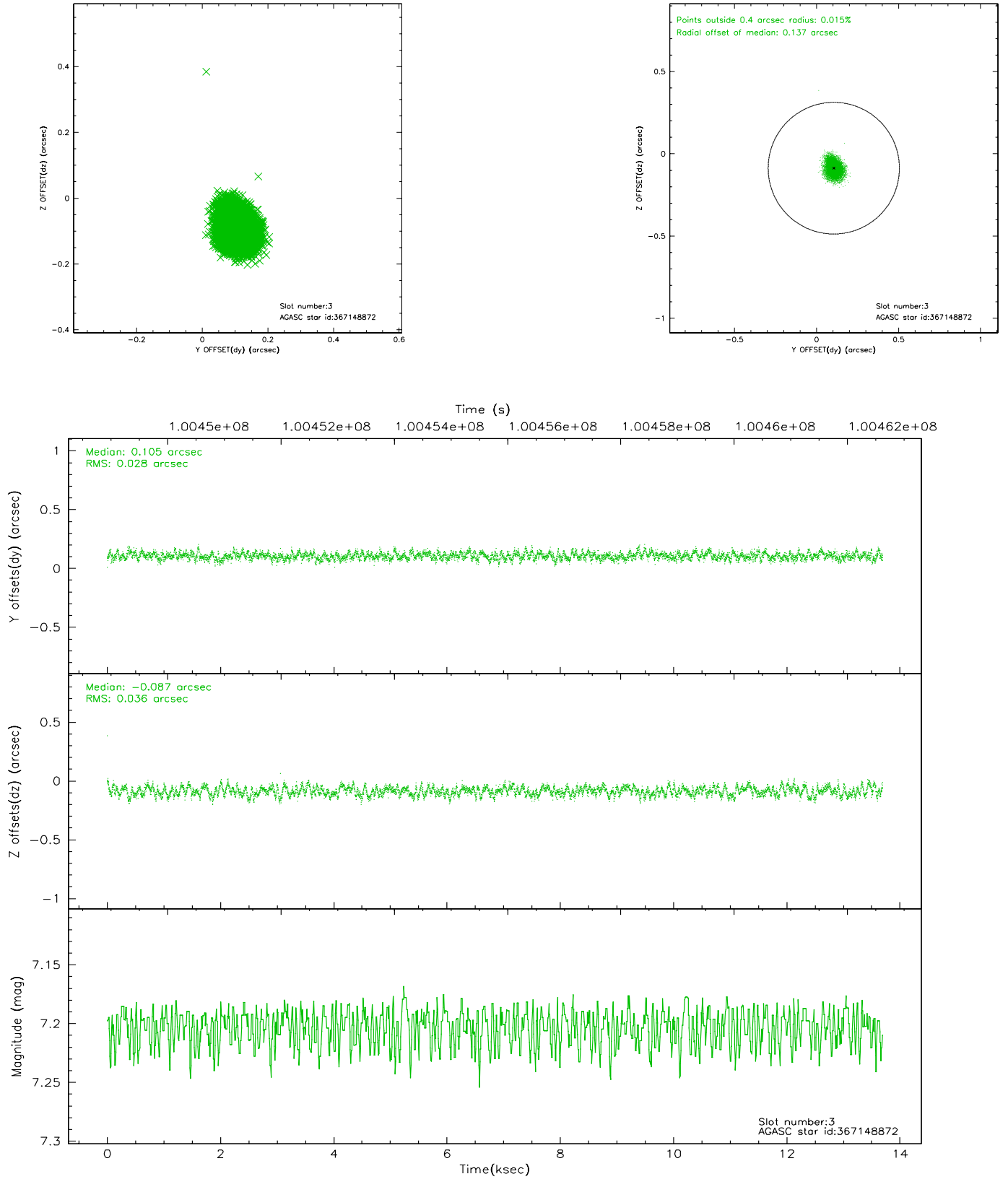
### Slot Statistics

slot	status	id	mag	n_pts	med_dy	med_dz	dr1	dr2	ra	dec	mean_y	mean_z
0	FID	ACIS-S-2	7.11	3340	0.007	0.020	0.007	0.012	0.000000	0.000000	-755.26	-1728.50
1	FID	ACIS-S-4	7.19	3340	-0.090	-0.009	0.007	0.012	0.000000	0.000000	2157.77	179.59
2	FID	ACIS-S-5	7.23	3341	0.052	-0.003	0.009	0.014	0.000000	0.000000	-1807.61	173.67
3	GUIDE	367148872	7.20	6682	0.105	-0.087	0.049	0.078	10.505940	40.688258	581.24	-935.19
4	GUIDE	367139768	7.99	6682	-0.017	0.078	0.056	0.088	11.069715	40.685175	1936.85	-206.49
5	GUIDE	367144424	8.66	6680	-0.104	-0.027	0.075	0.121	10.464515	40.309136	1132.31	-2188.93
6	GUIDE	367146616	8.86	6679	0.038	0.039	0.084	0.139	11.418645	41.190163	1886.69	1843.48
7	GUIDE	367665472	9.51	6672	-0.017	-0.004	0.131	0.209	10.241611	41.730843	-1833.48	2026.47

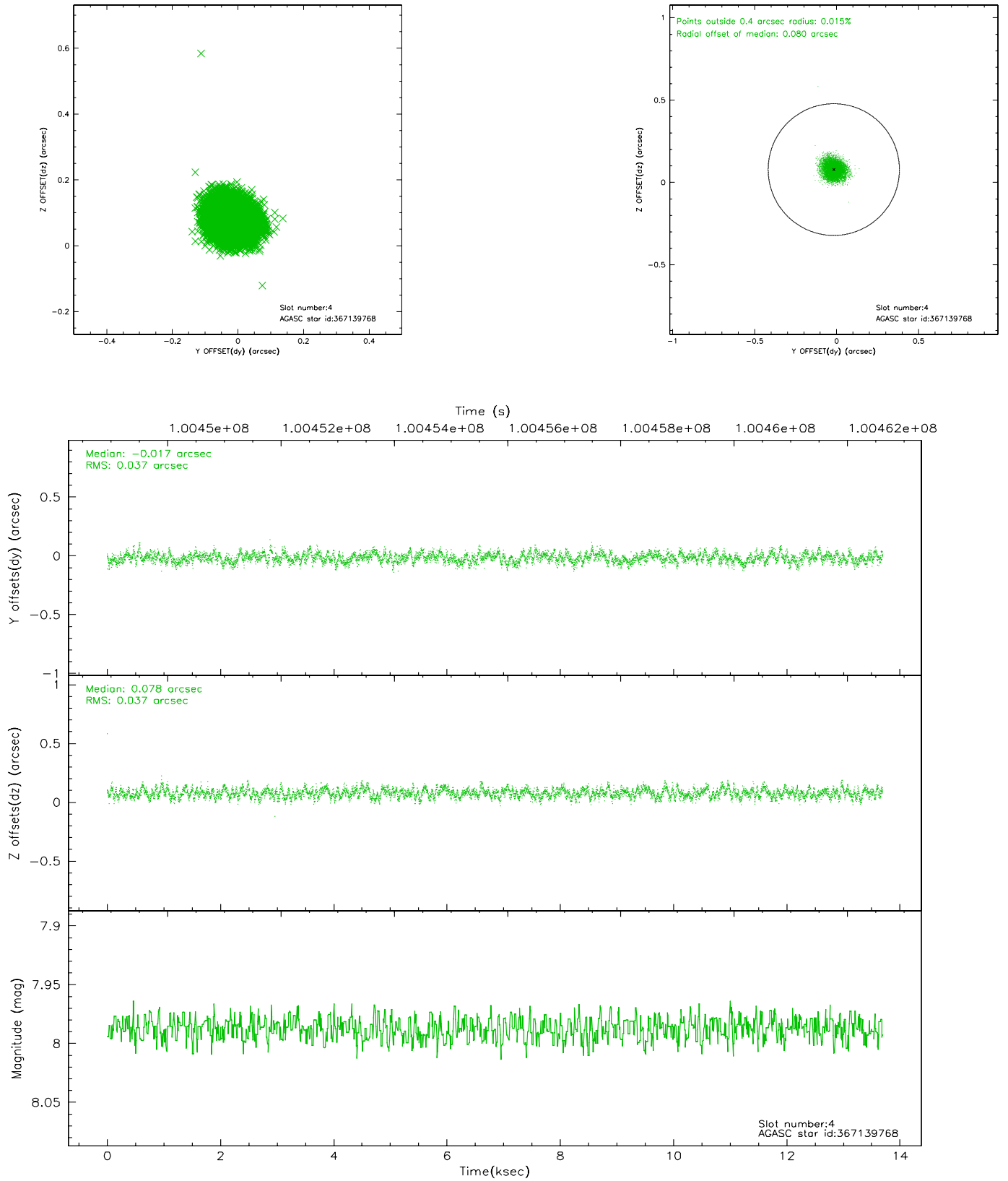


## 2.4 Star Slots

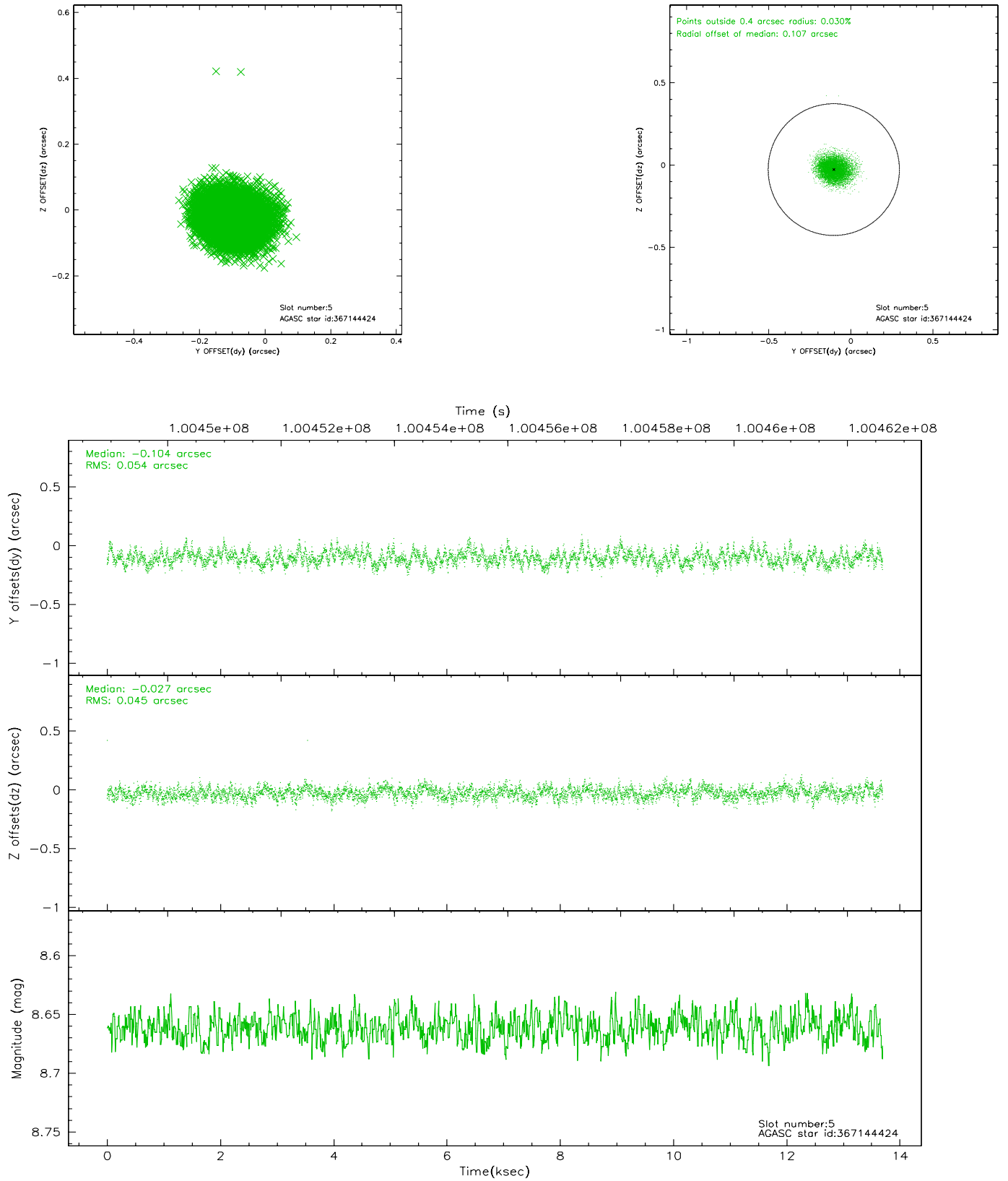
### 2.4.1 Slot 3



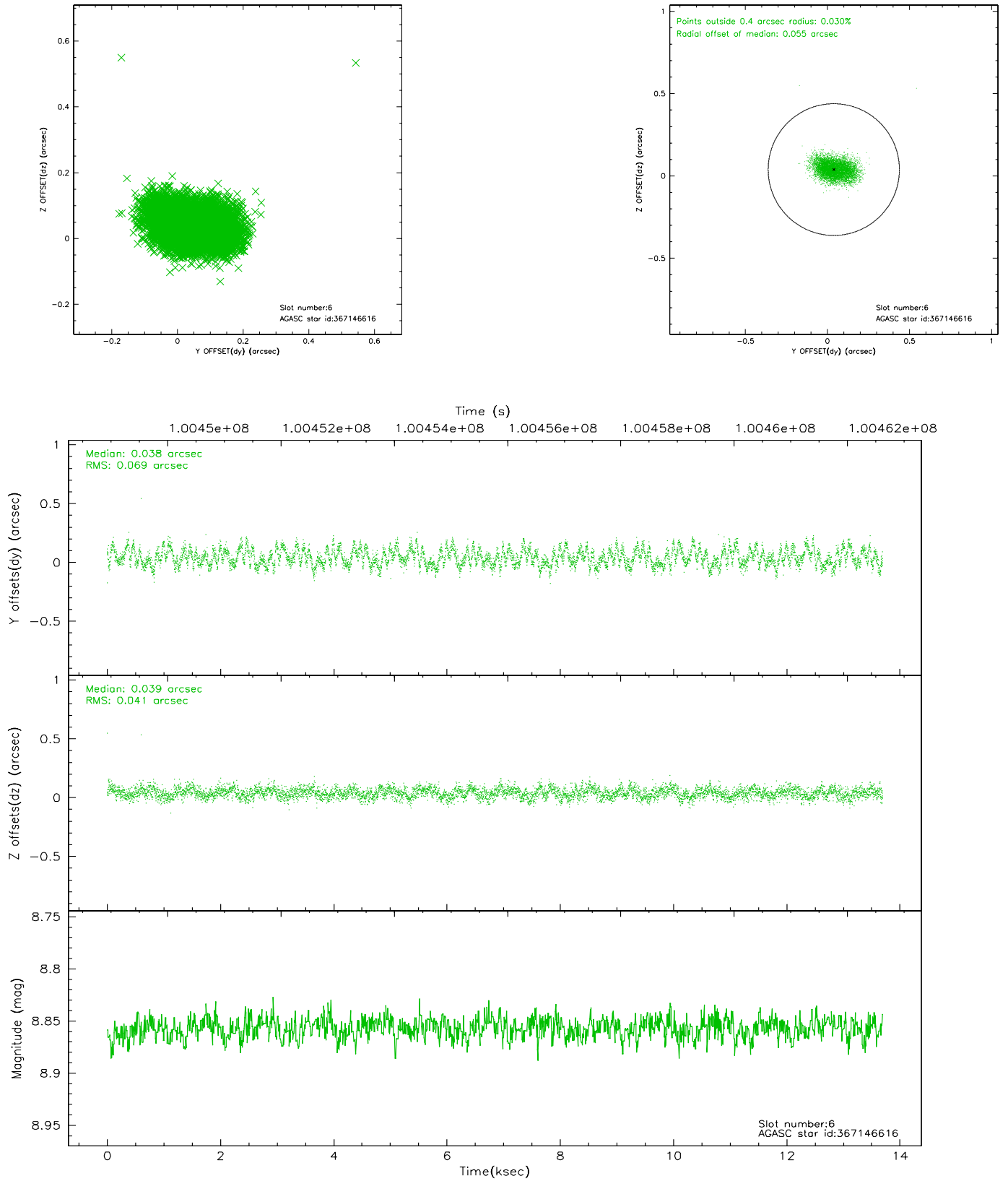
## 2.4.2 Slot 4



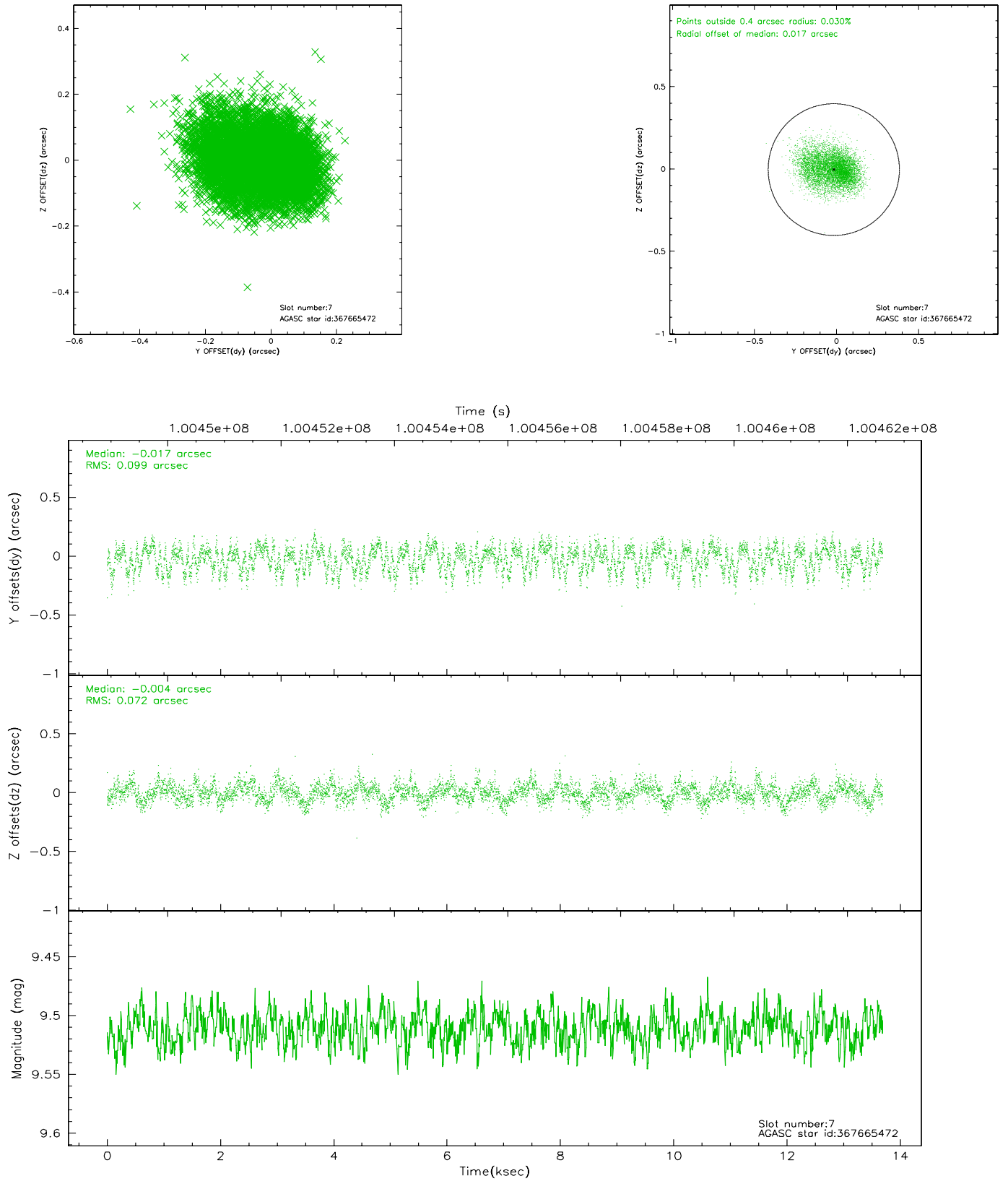
### 2.4.3 Slot 5



## 2.4.4 Slot 6

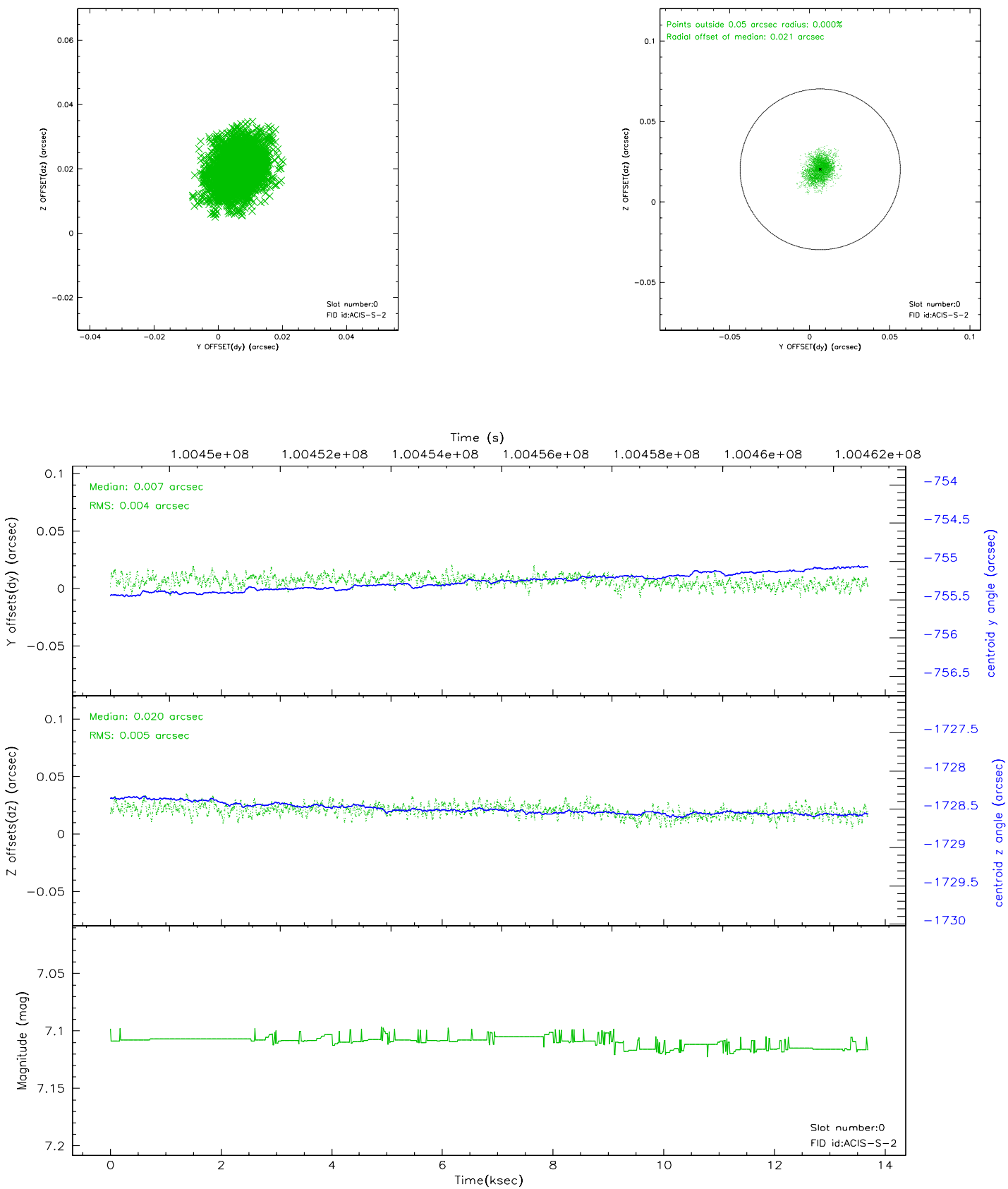


## 2.4.5 Slot 7

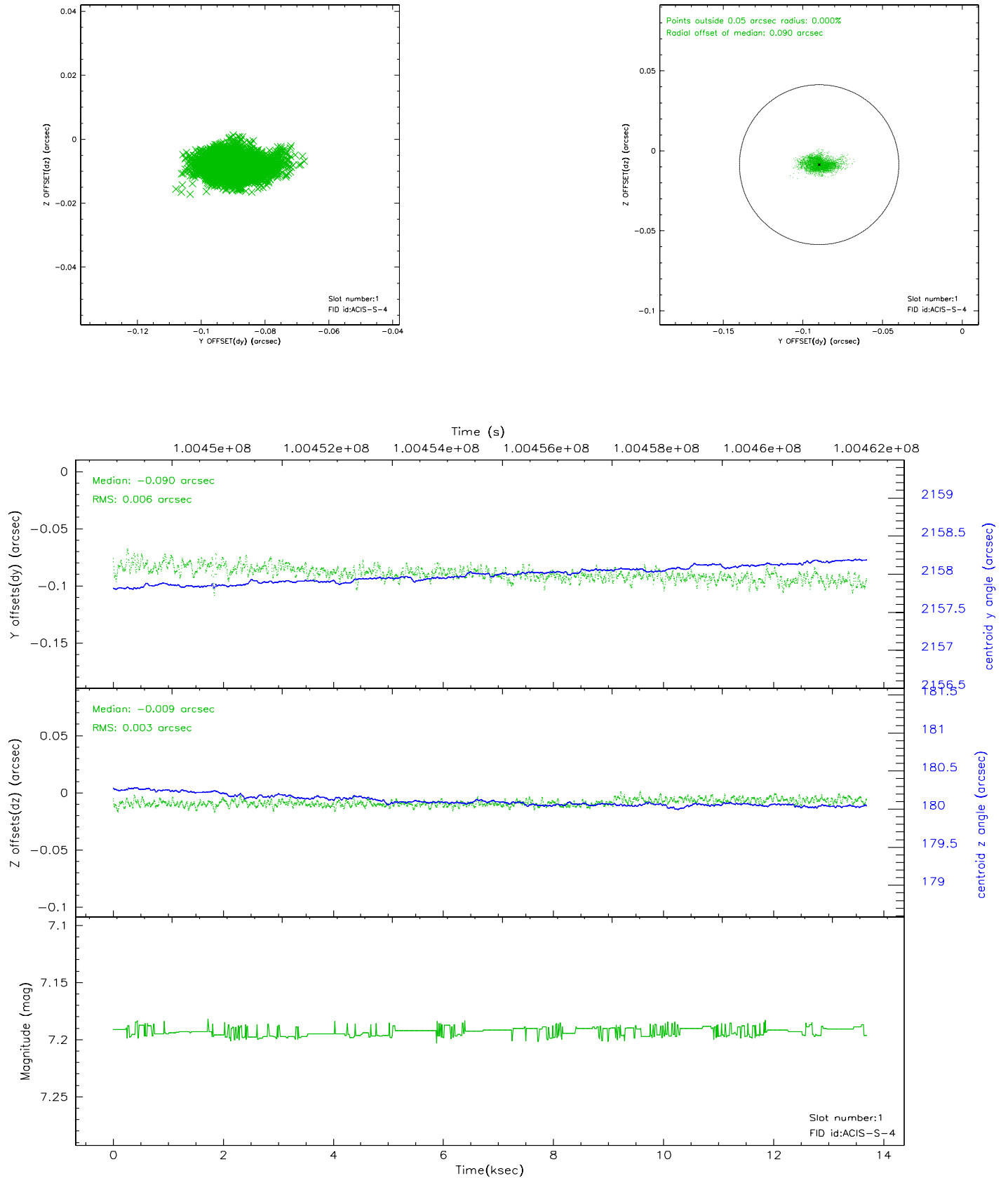


## 2.5 FID Slots

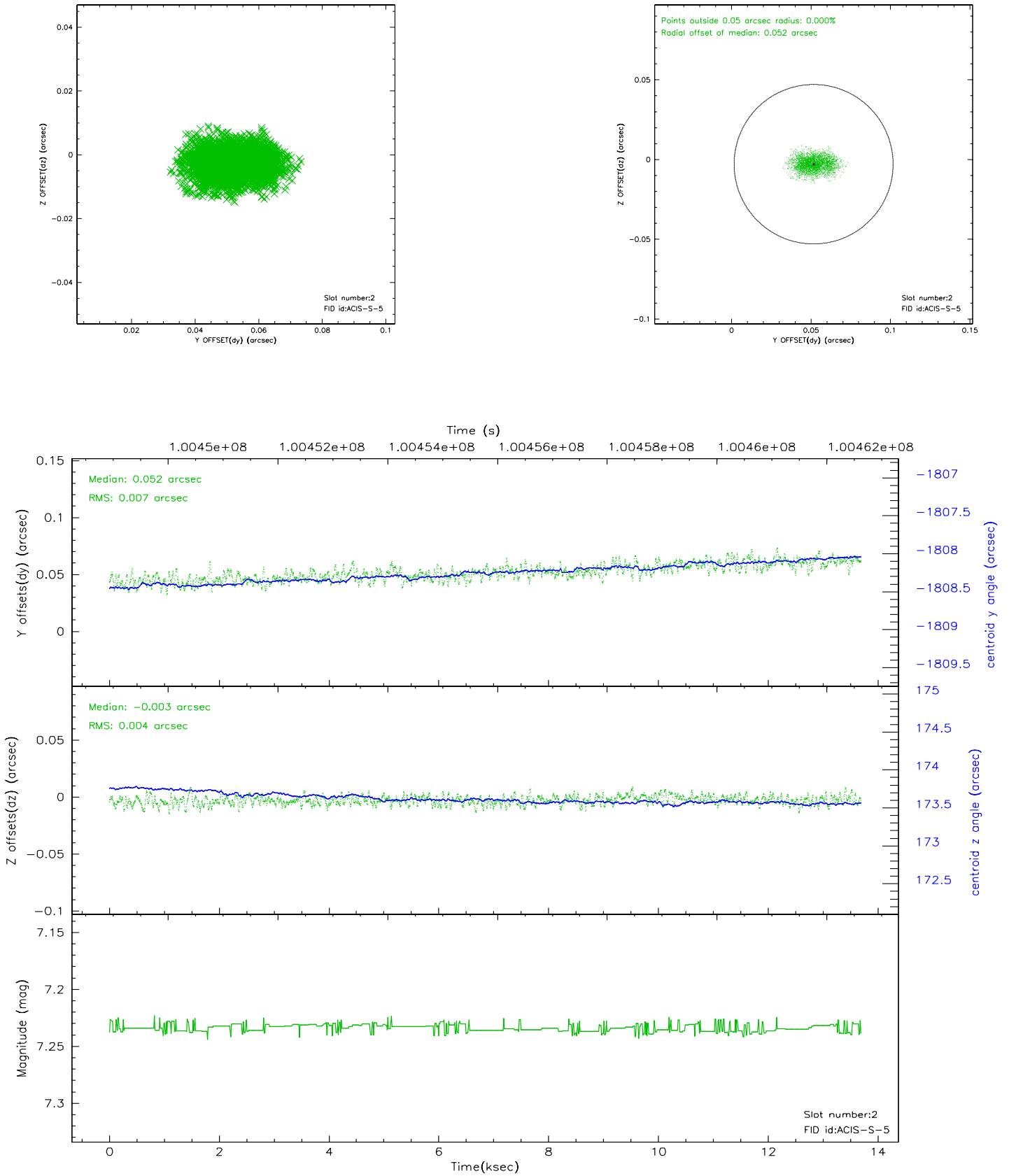
### 2.5.1 Slot 0



## 2.5.2 Slot 1

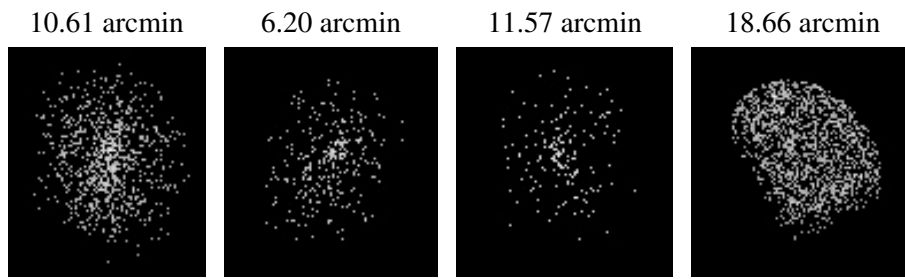


### 2.5.3 Slot 2





### 3 Point Sources



# A Summary

## A.1 Status

V&V Scientist	Jen Lauer
V&V Date (YYYY-MM-DD)	2006.11.08
V&V Edition	1
V&V Disposition and Status	OK
V&V Charge Time	13.209

## A.2 Comments

Monitor constraint met.