

V&V Reference Report

L2 ASCDS Version : 10.3.3

Observation 17410 - L2 Version 1
Chandra X-Ray Center

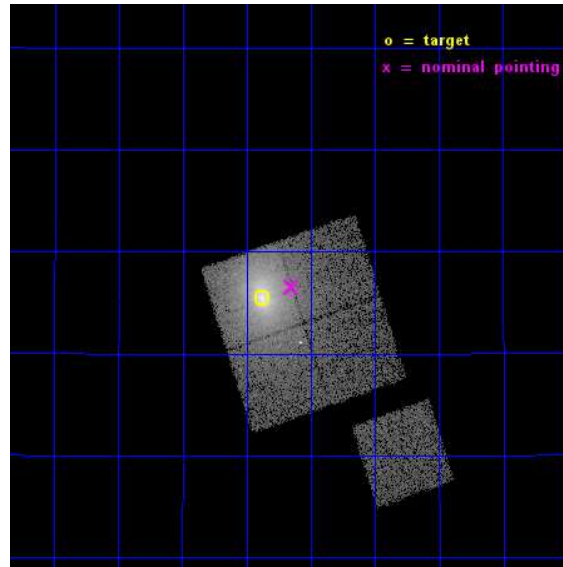
L2 Processing Date : Apr 8 2015

Contents

1	Front	2
2	OBI	3
2.1	OBI	3
2.1.1	Images	3
2.1.2	Bias	3
2.1.3	Parameters	4
2.1.4	Events	4
2.2	Compared Parameters	5
2.3	Aspect	6
2.4	Star Slots	9
2.4.1	Slot 3	9
2.4.2	Slot 4	10
2.4.3	Slot 5	11
2.4.4	Slot 6	12
2.4.5	Slot 7	13
2.5	FID Slots	14
2.5.1	Slot 0	14
2.5.2	Slot 1	15
2.5.3	Slot 2	16
A	Summary	17
A.1	Status	17
A.2	Comments	17

1 Front

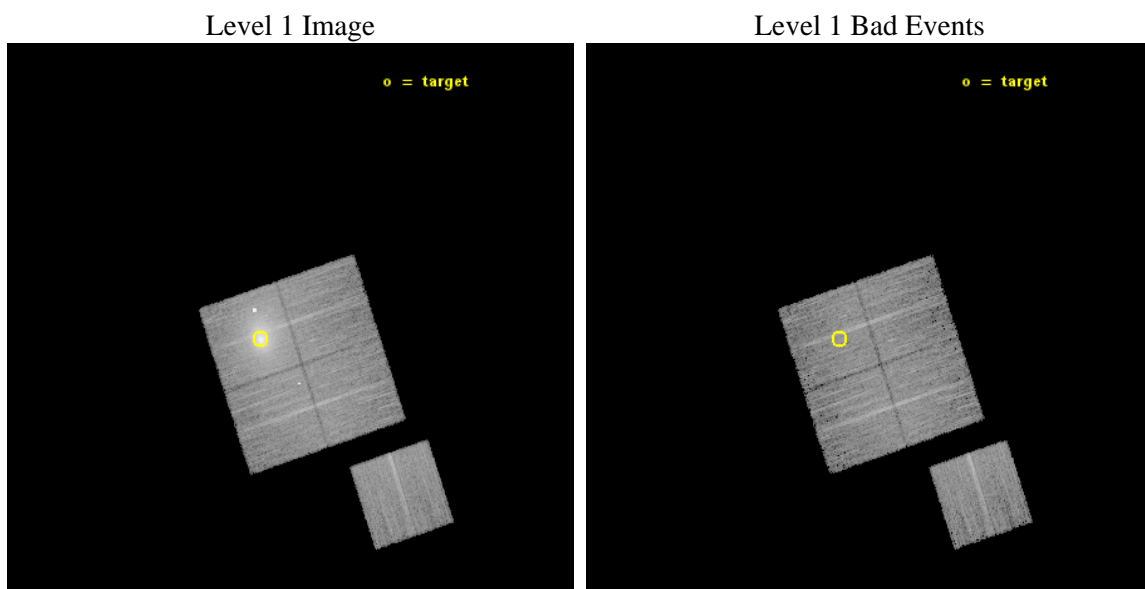
seq_num	890110	Sequence number
obs_id	17410	Observation id
title	AO-16 Calibration Observations of A1795	Proposal title
observer	Dr. CXC Calibration	Principal investigator
object	A1795	Source name
dtcycle	0	
cycle	P	events from which exps? Prim/Second/Both
ra_targ	207.219583	Observer's specified target RA [deg]
dec_targ	26.590833	Observer's specified target Dec [deg]
ra_nom	207.16278929989	Nominal RA [deg]
dec_nom	26.609741863719	Nominal Dec [deg]
roll_nom	161.54957152732	Nominal Roll [deg]
revision	1	Processing version of data
ontime	14777.485535145	Sum of GTIs [s]
livetime	14584.406807602	Livetime [s]
ontime0	14777.444495201	Sum of GTIs [s]
ontime1	14777.485535145	Sum of GTIs [s]
ontime2	14777.526575208	Sum of GTIs [s]
ontime3	14777.567615151	Sum of GTIs [s]
ontime6	14777.403455138	Sum of GTIs [s]
l2events	126805	Number of level 2 events



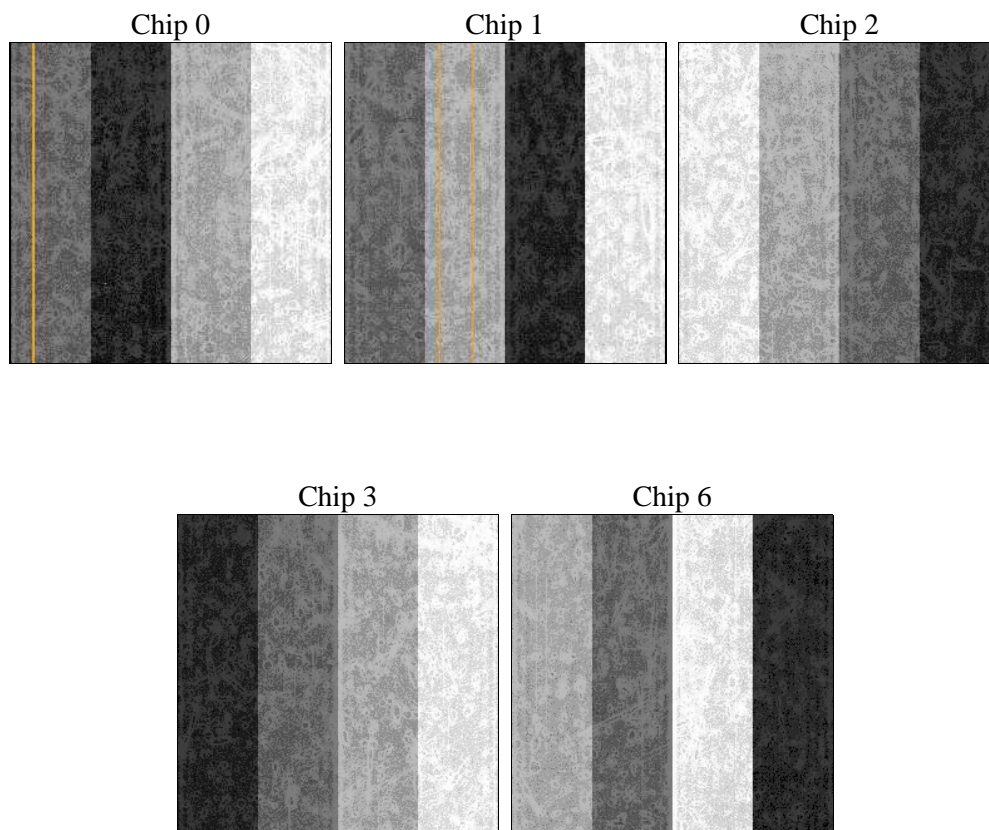
2 OBI

2.1 OBI

2.1.1 Images



2.1.2 Bias



2.1.3 Parameters

obi_num	0	Obi number	sched_exp_time	15000.000000	[s] Scheduled observation exposure time
ascdsver	10.3.3	Processing system revision	ontime	14777.485535145	Sum of GTIs [s]
caldsver	4.6.7	 	ontime0	14777.444495201	Sum of GTIs [s]
date	2015-04-09T02:54:51	Date and time of file creation	ontime1	14777.485535145	Sum of GTIs [s]
revision	1	Processing version of data	ontime2	14777.526575208	Sum of GTIs [s]
			ontime3	14777.567615151	Sum of GTIs [s]
			ontime6	14777.403455138	Sum of GTIs [s]
			l1events	464460	Number of level 1 events

2.1.4 Events

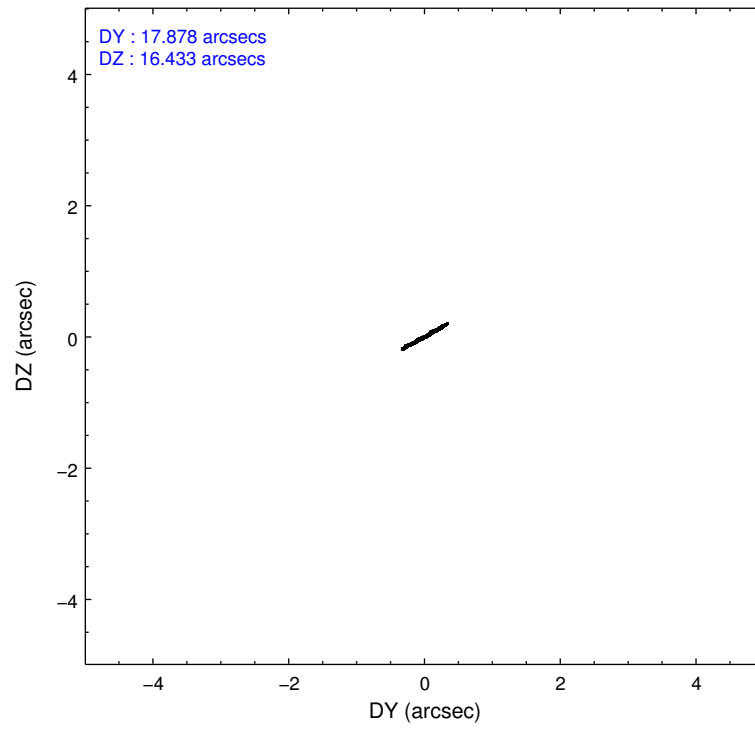
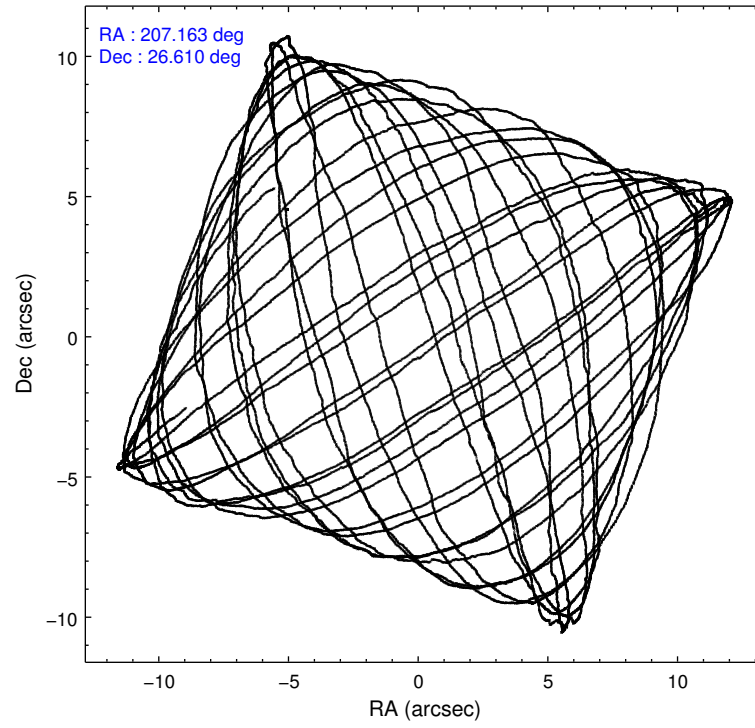
	ccd 0	ccd 1	ccd 2	ccd 3	ccd 6
level 1 events	72975	162536	76298	78533	74118
rejected events	60167	62929	67283	64501	65938
rejected %	82%	38%	88%	82%	88%

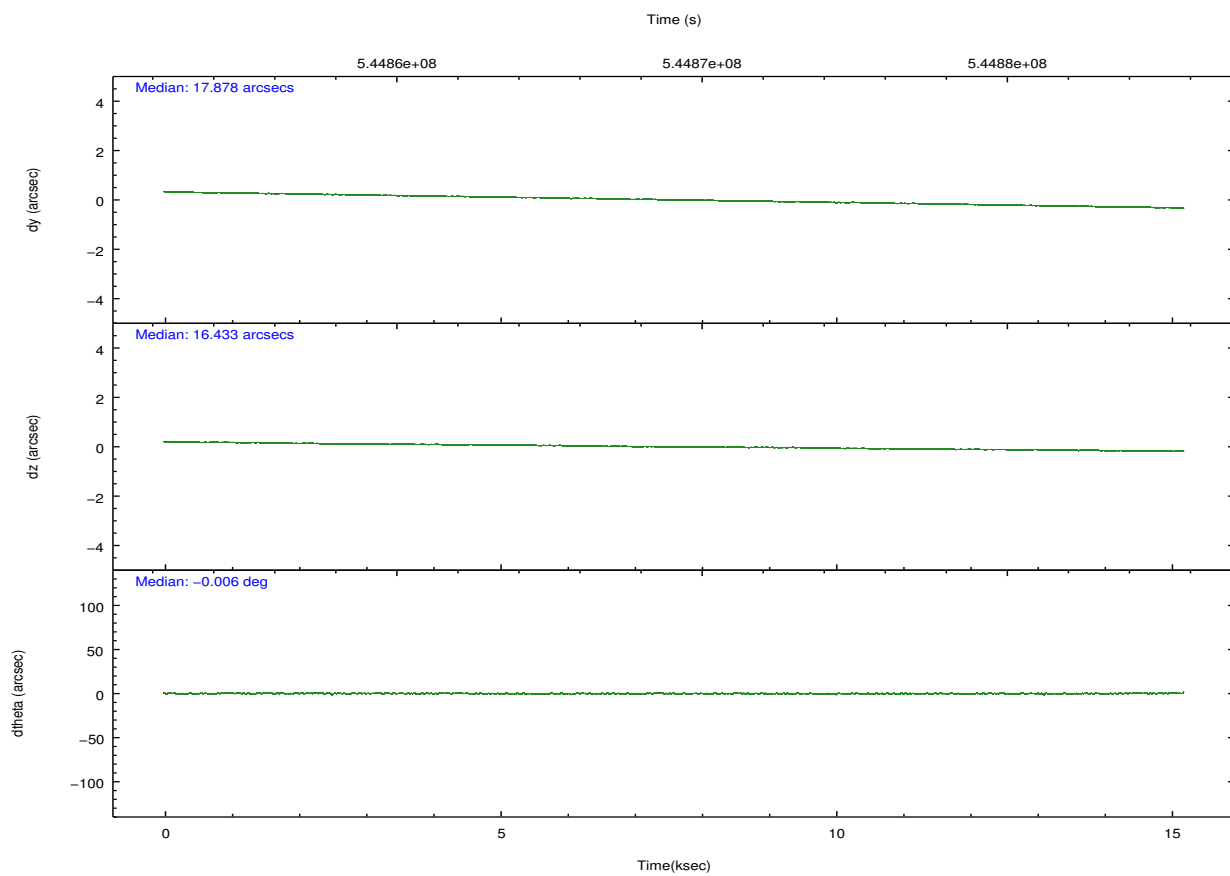
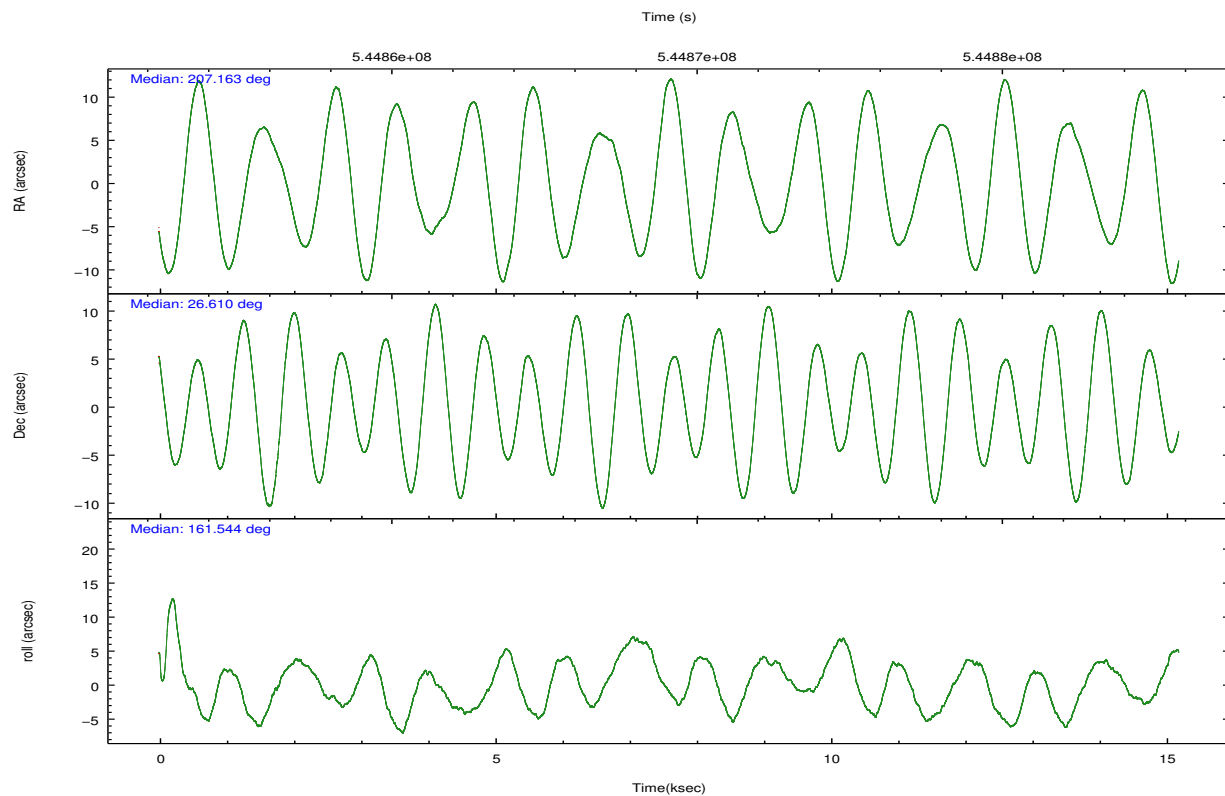
	ccd 0	ccd 1	ccd 2	ccd 3	ccd 6
grade 0 events	6575	75063	3841	7872	2488
	9%	46%	5%	10%	3%
grade 1 events	45	276	46	67	28
	0%	0%	0%	0%	0%
grade 2 events	2526	13020	1895	2289	1959
	3%	8%	2%	2%	2%
grade 3 events	986	3418	851	1019	802
	1%	2%	1%	1%	1%
grade 4 events	883	3436	862	993	785
	1%	2%	1%	1%	1%
grade 5 events	3179	3686	2877	3658	3390
	4%	2%	3%	4%	4%
grade 6 events	1842	4689	1566	1861	2147
	2%	2%	2%	2%	2%
grade 7 events	56939	58948	64360	60774	62519
	78%	36%	84%	77%	84%

2.2 Compared Parameters

Parameter	Planned	Actual	Parameter	Planned	Actual
Instrument	ACIS	ACIS	Obspar format version number	7	7
Detector	ACIS-01236	ACIS-01236	Obspar file type	PREDICTED	ACTUAL
Grating	NONE	NONE	Obspar update status	NONE	UPDATED
Data mode	VFAINT	VFAINT	Number of optional ACIS chips dropped	0	0
Observation mode	POINTING	POINTING	On-chip summing requested	N	N
[deg] Pointing RA	207.193052	207.1627892998853	Subarray requested	NONE	NONE
[deg] Pointing Dec	26.615382	26.60974186371944	Alternating exposures requested	N	N
[deg] Pointing Roll	161.327321	161.5495715273177	[s] Primary exposure time	0.000000	3.1
[s] Window start time (MET)	544233667.184000	544233667.184000			
[s] Window stop time (MET)	546739267.184000	546739267.184000			
[mm] SIM focus pos	-0.782348	-0.7809083437167272			
[mm] SIM defocus	0	0.001439871863259334			
[mm] SIM translation stage pos	-246.722463	-246.7222175961781			
[mm] SIM translation stage offset	13.13	13.12976459324844			
[s] Observation start time (MET)	544862119.184000	544861743.89676			
Observation start date	2015-04-08T06:34:12	2015-04-08T06:29:03			
[s] Observation end time (MET)	544877119.184000	544877253.68513			
Observation end date	2015-04-08T10:44:12	2015-04-08T10:47:33			
Read mode	TIMED	TIMED			

2.3 Aspect



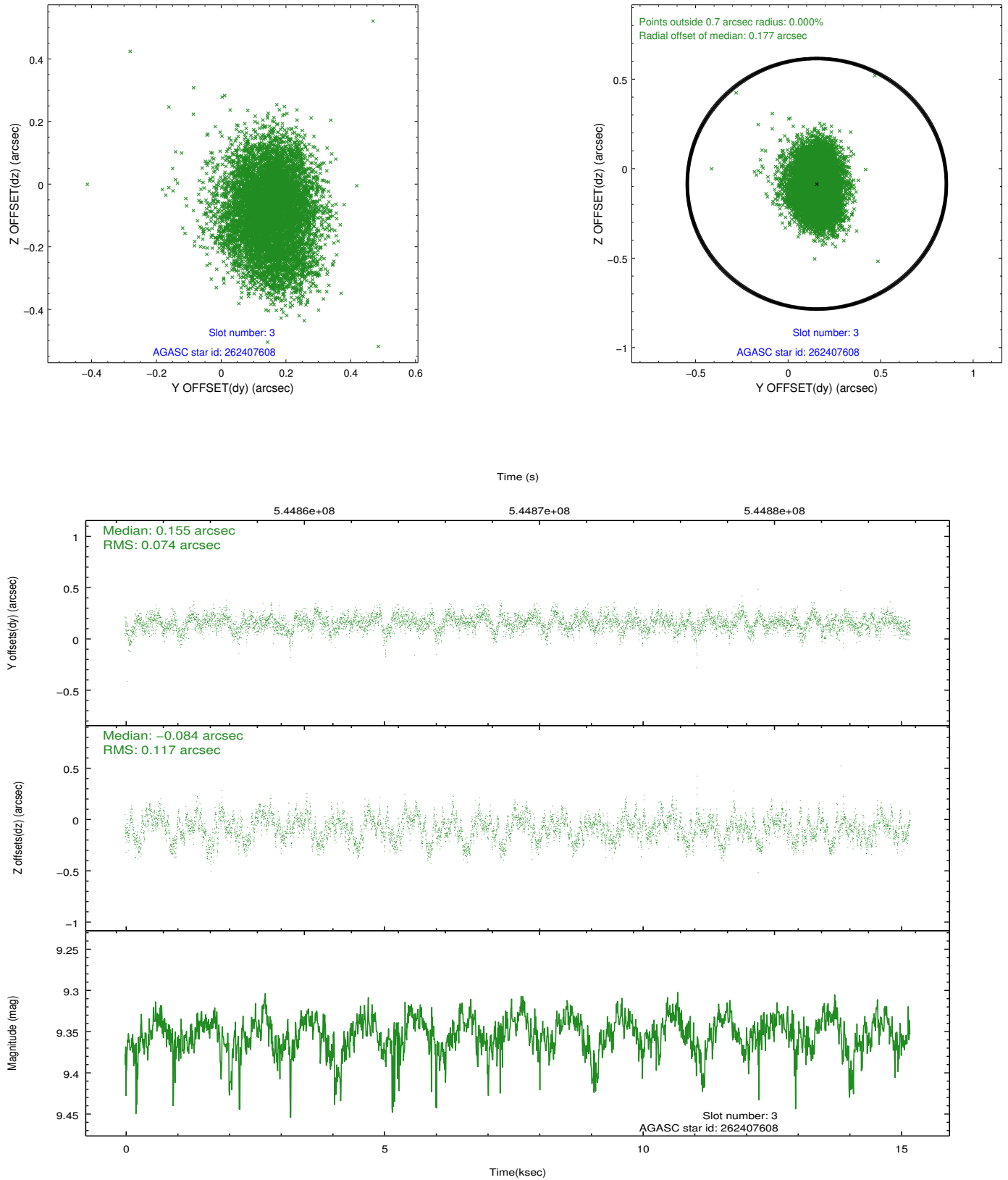


Slot Statistics

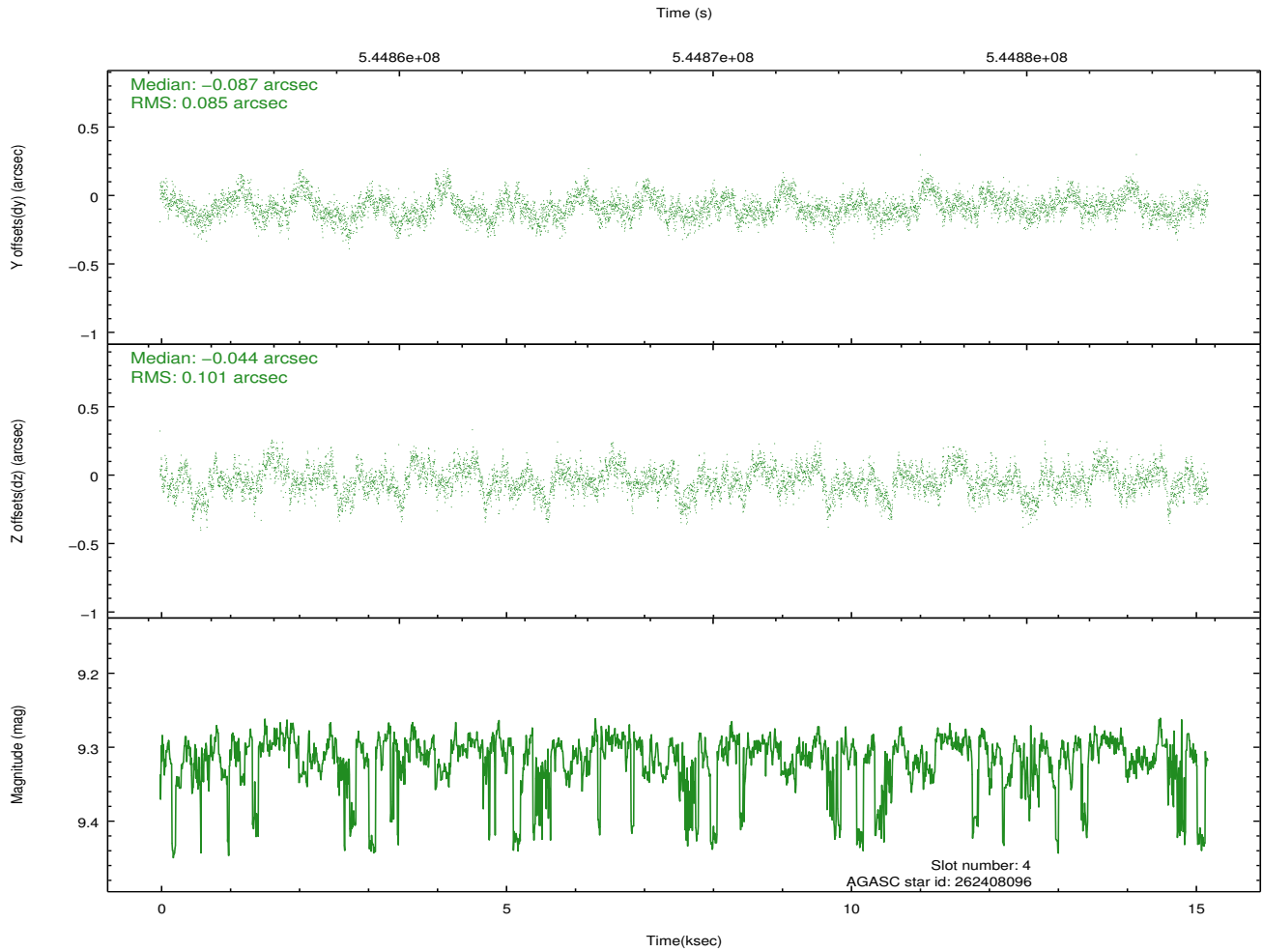
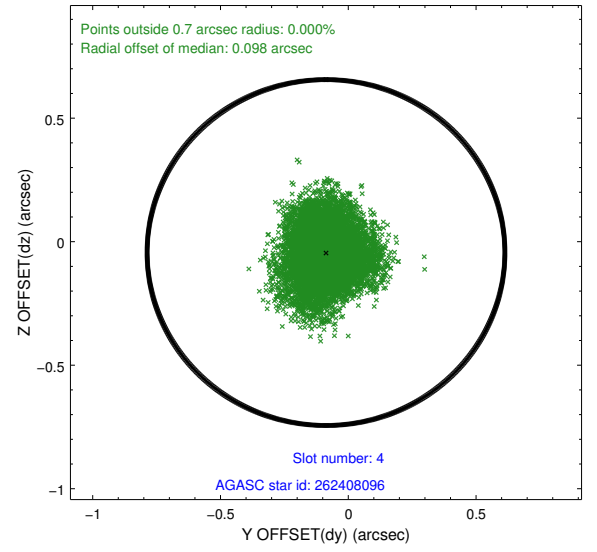
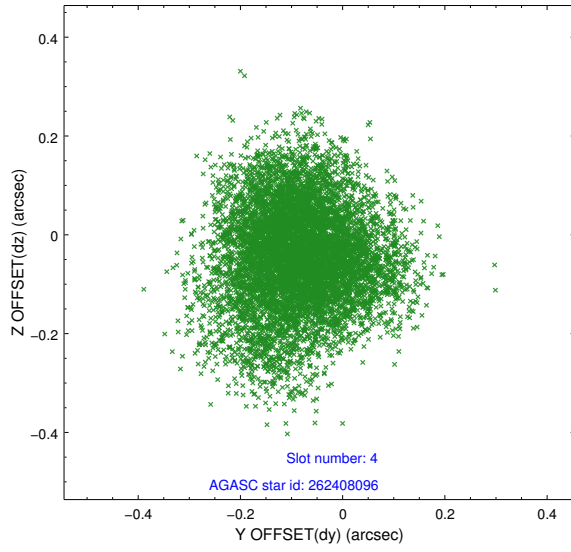
slot	status	used	id	mag	n_pts	med_dy	med_dz	dr1	dr2	ra	dec	mean_y	mean_z
0	FID		ACIS-I-1	7.32	3706	-0.037	0.152	0.009	0.016	0.000000	0.000000	921.75	-570.03
1	FID		ACIS-I-5	7.28	3706	-0.157	0.011	0.008	0.013	0.000000	0.000000	-1826.45	1327.03
2	FID		ACIS-I-6	7.24	3706	0.104	-0.094	0.009	0.015	0.000000	0.000000	386.92	1971.91
3	GUIDE	used	262407608	9.35	7407	0.155	-0.084	0.148	0.238	207.378401	26.435507	-773.18	421.91
4	GUIDE	used	262408096	9.31	7403	-0.087	-0.044	0.142	0.227	207.011678	26.515421	438.91	527.90
5	GUIDE	used	262408512	7.98	7408	0.021	0.292	0.083	0.130	207.800210	27.128796	-1249.26	-2377.72
6	GUIDE	used	262408936	9.65	7395	-0.121	0.158	0.190	0.290	207.154731	26.726554	244.42	-339.48
7	GUIDE	used	262411960	9.68	7404	0.038	-0.317	0.188	0.287	207.327895	25.881727	-1259.34	2361.92

2.4 Star Slots

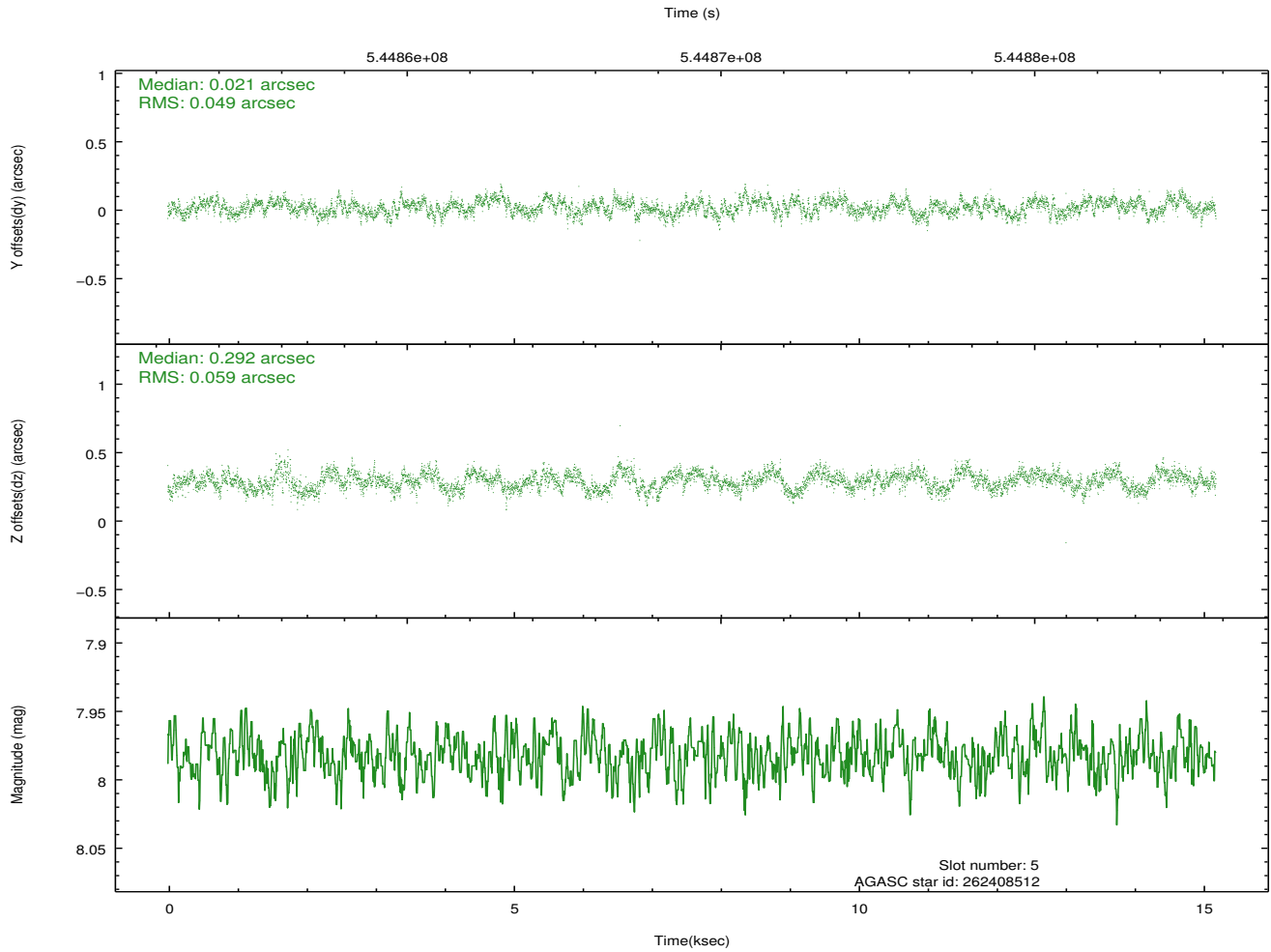
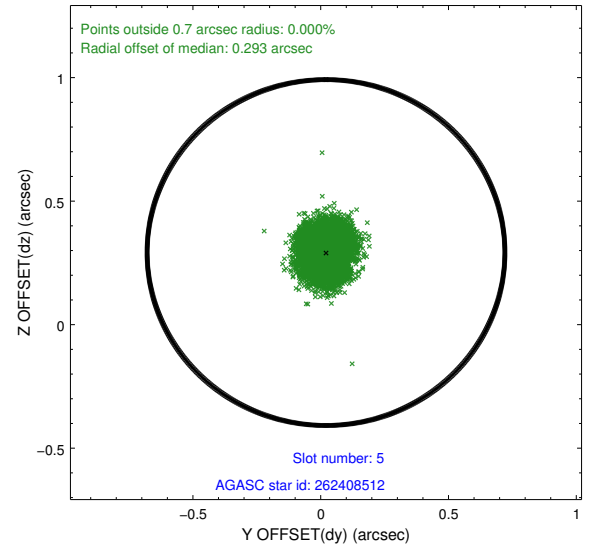
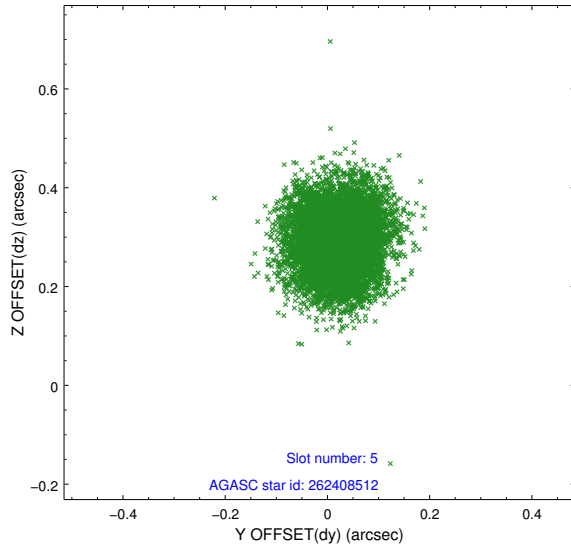
2.4.1 Slot 3



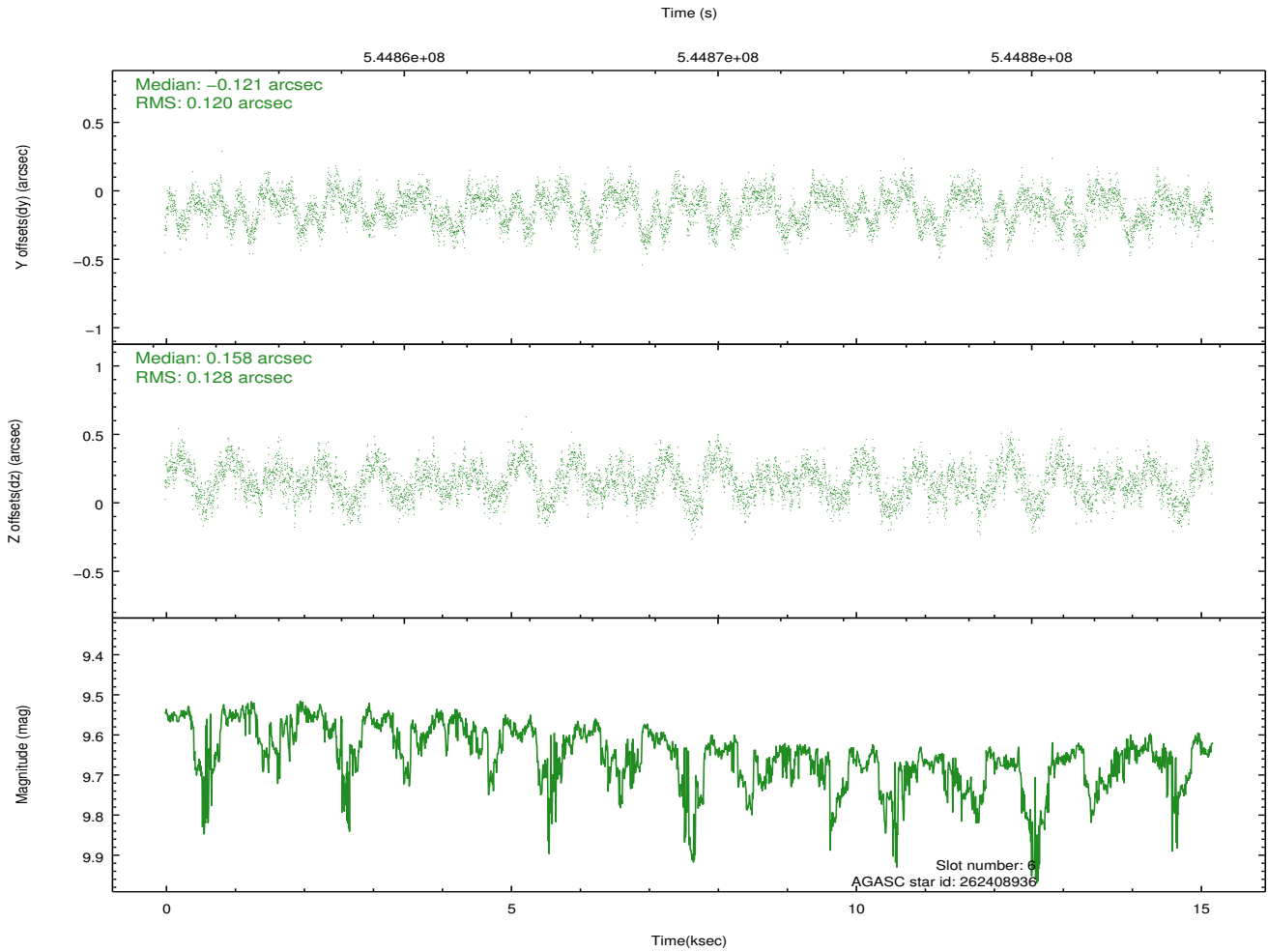
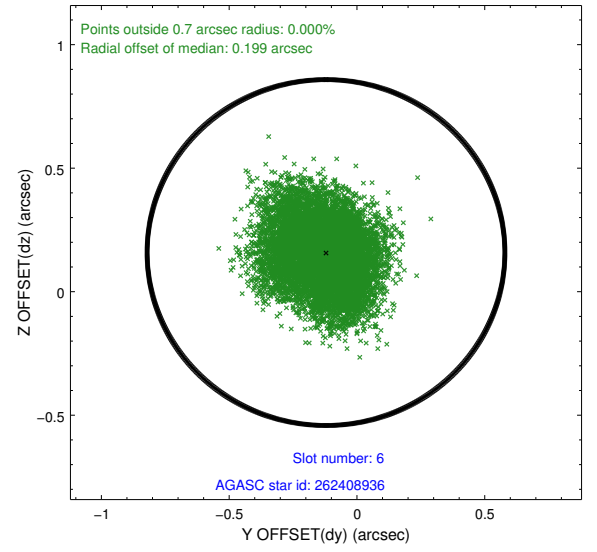
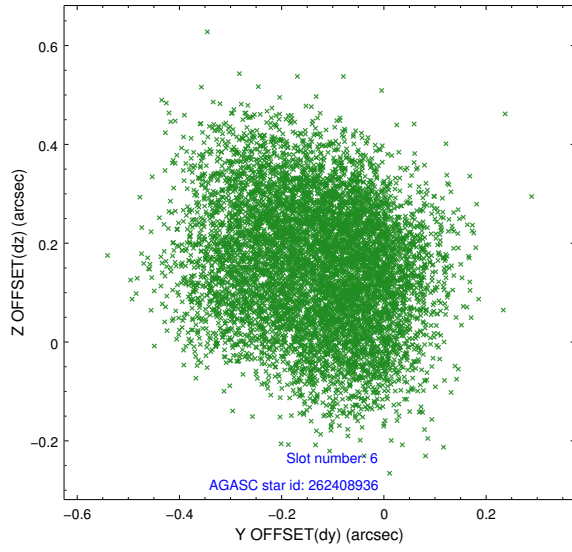
2.4.2 Slot 4



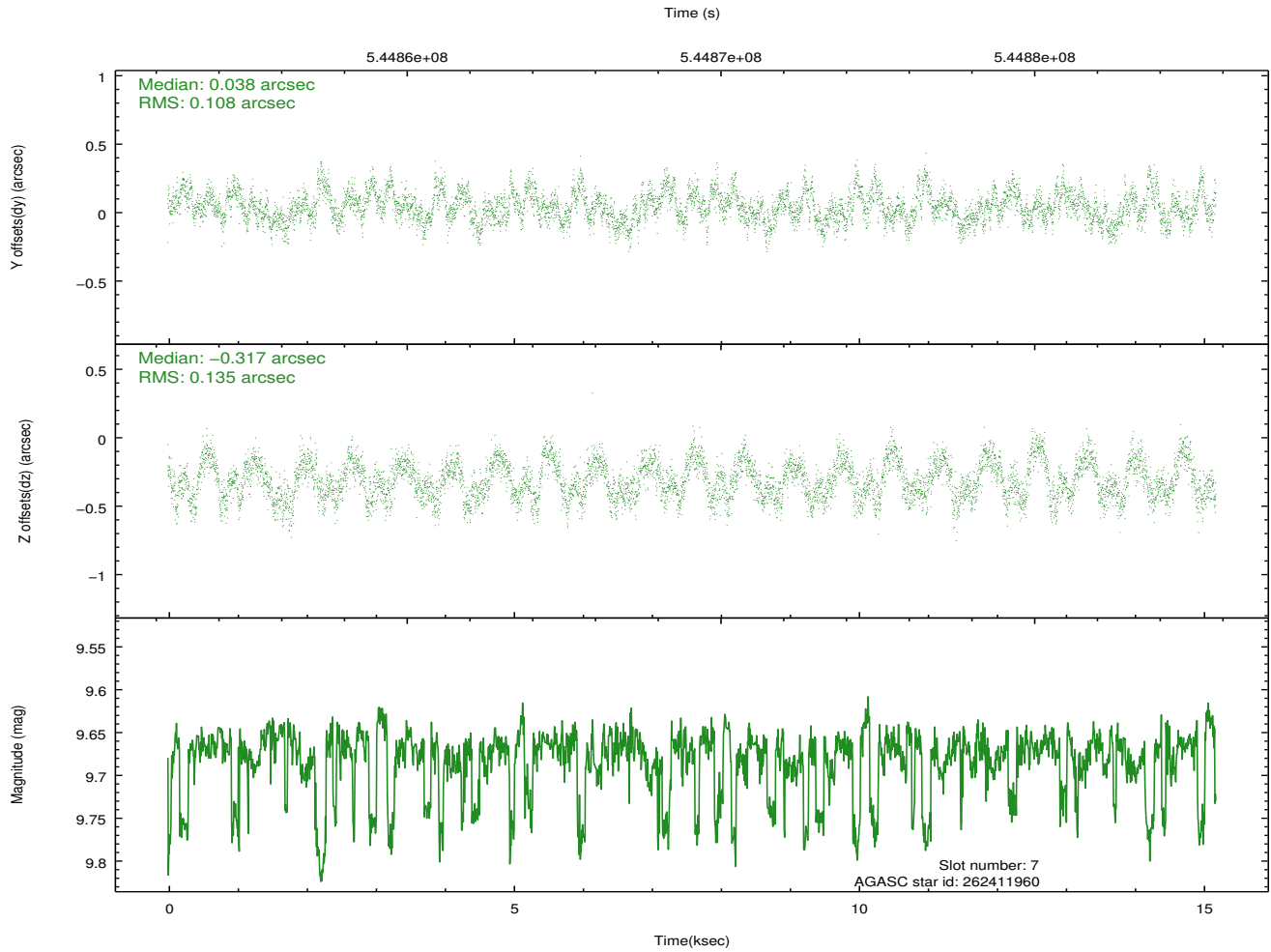
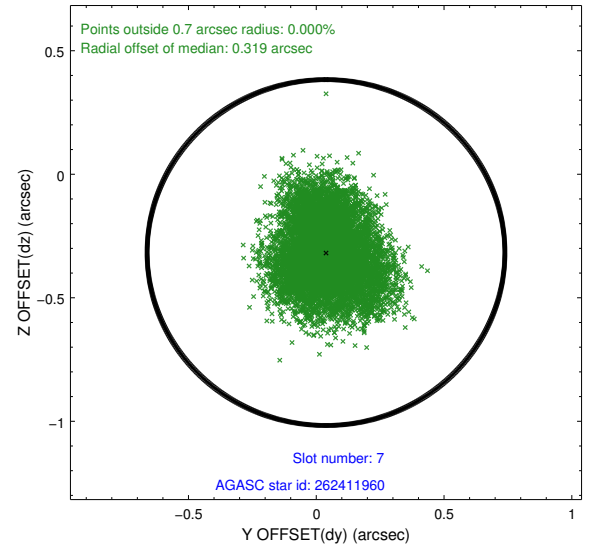
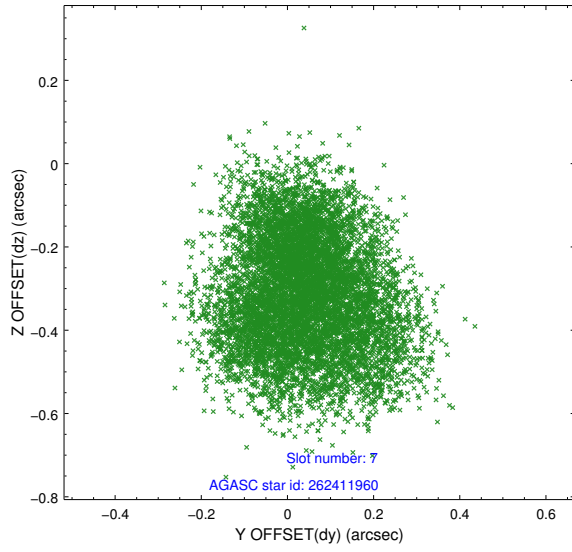
2.4.3 Slot 5



2.4.4 Slot 6

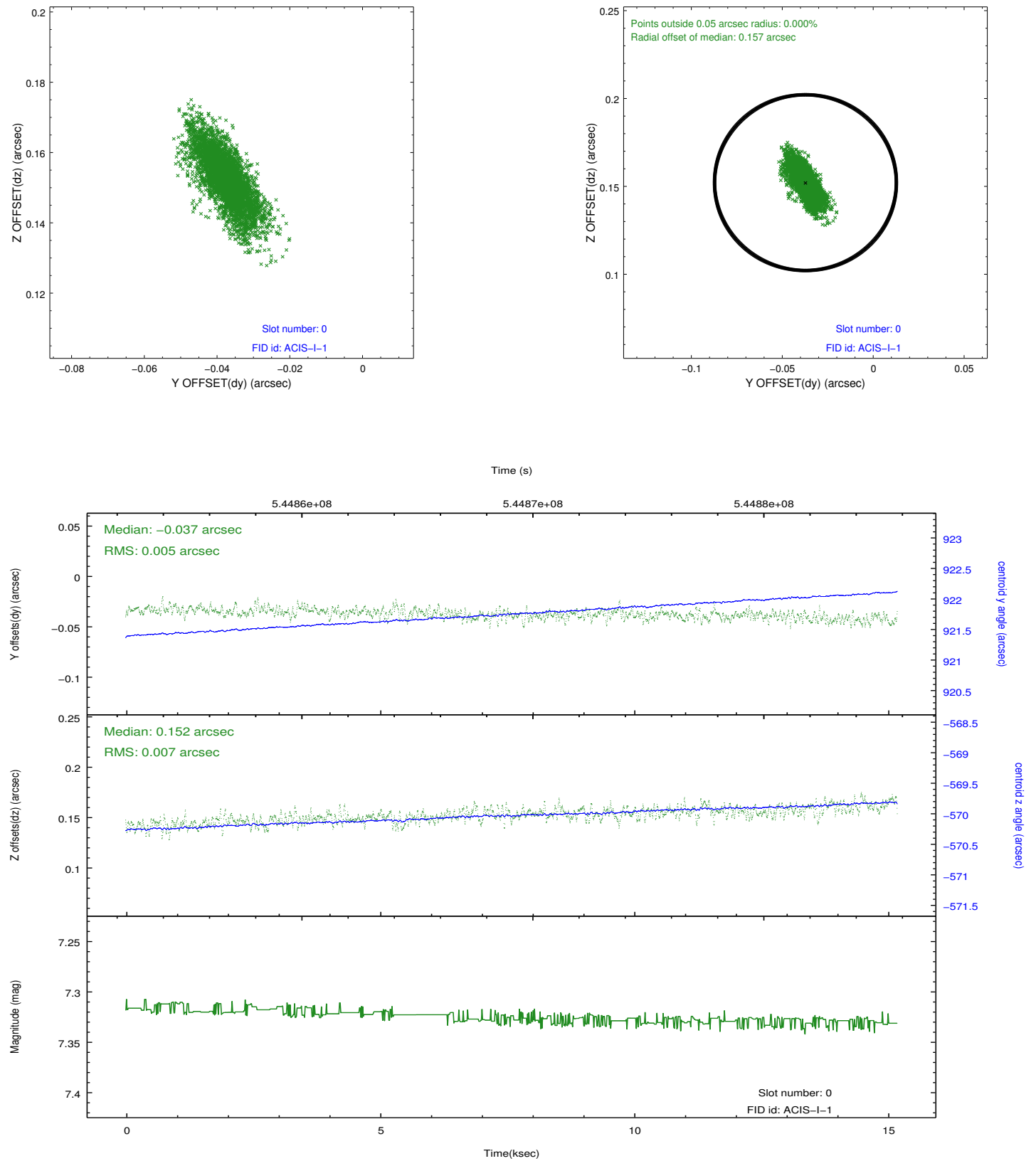


2.4.5 Slot 7

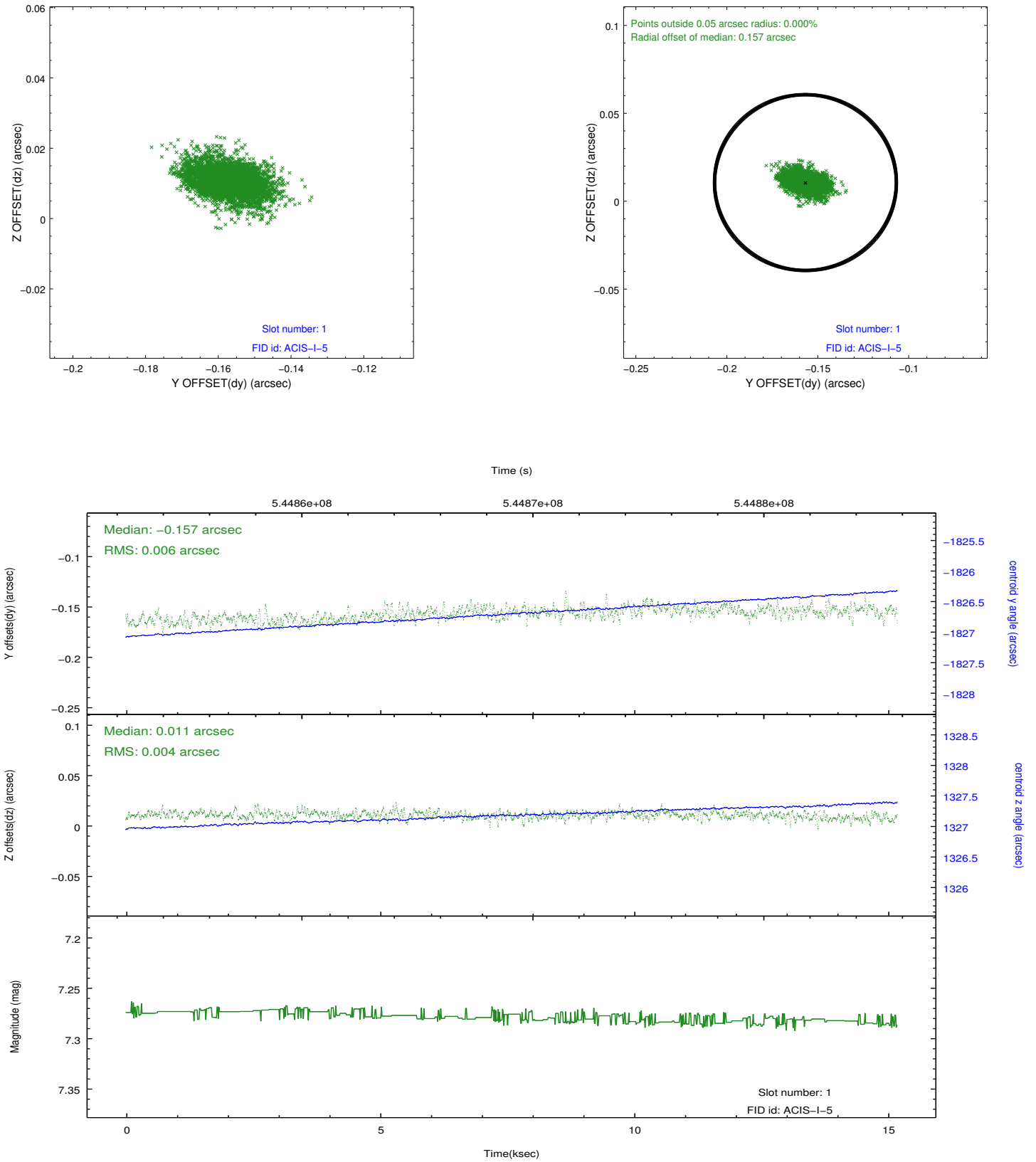


2.5 FID Slots

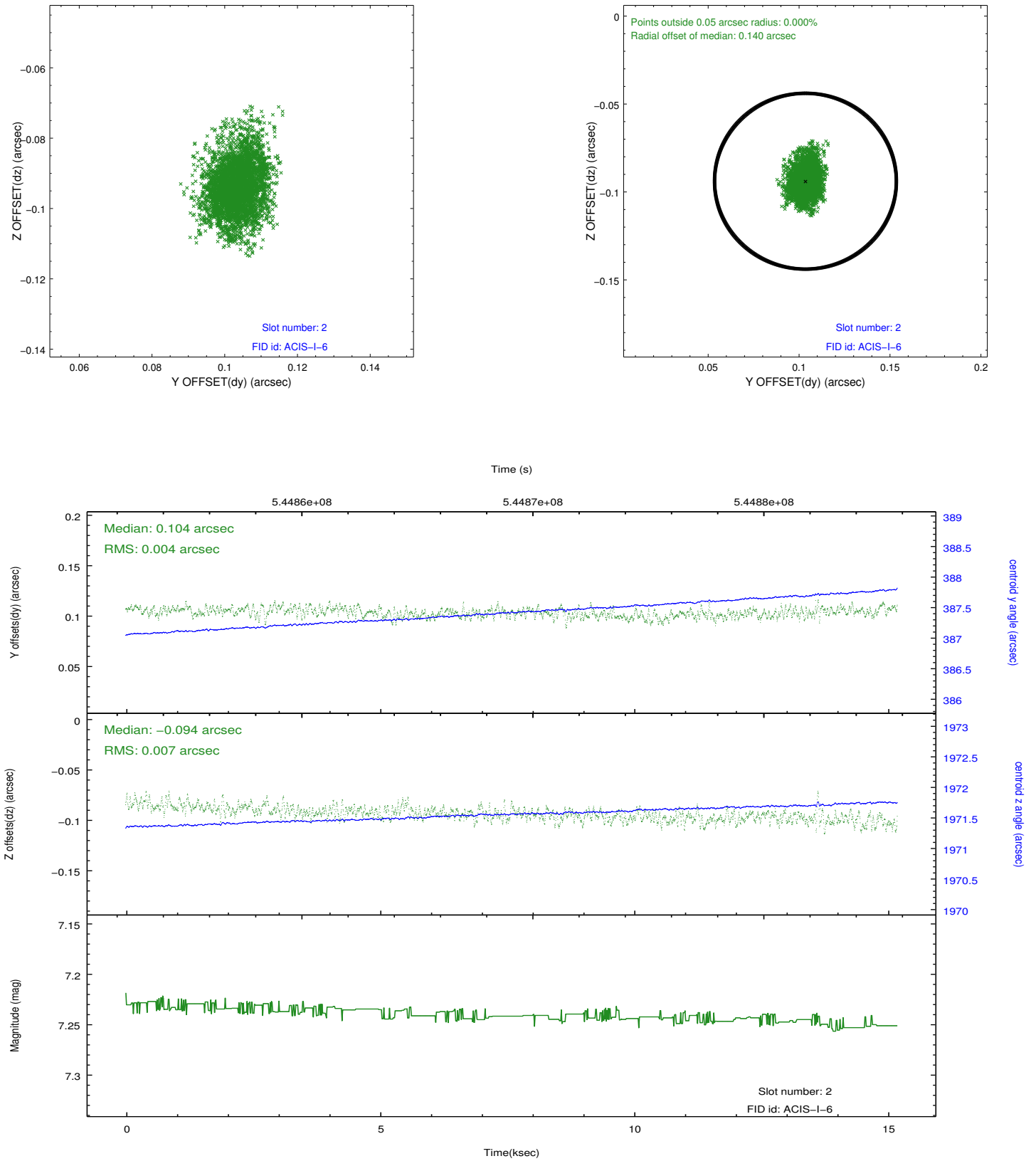
2.5.1 Slot 0



2.5.2 Slot 1



2.5.3 Slot 2



A Summary

A.1 Status

V&V Scientist	Jen Lauer
V&V Date (YYYY-MM-DD)	2015.04.09
V&V Edition	1
V&V Disposition and Status	OK
V&V Charge Time	14.777485535145

A.2 Comments

Window constraint met.