

V&V Reference Report

L2 ASCDS Version : 7.6.10

Observation 1740 - L2 Version 001
Chandra X-Ray Center

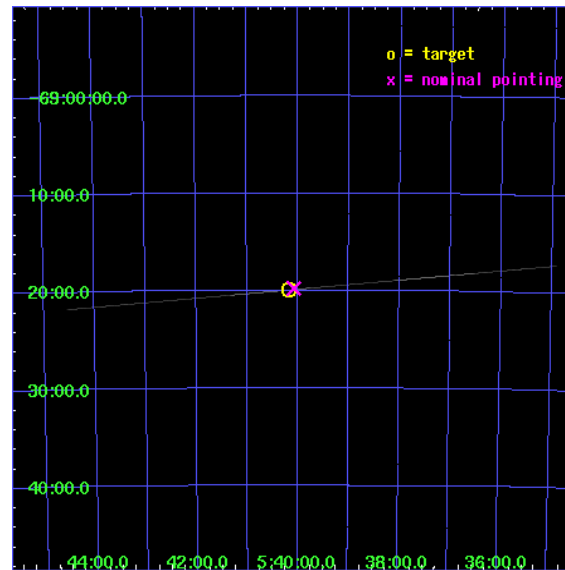
L2 Processing Date : May 27 2007

Contents

1	Front	2
2	OBI	3
2.1	OBI	3
2.1.1	Images	3
2.1.2	Bias	3
2.1.3	Parameters	4
2.1.4	Events	4
2.2	Compared Parameters	5
2.3	Aspect	6
2.4	Star Slots	9
2.4.1	Slot 3	9
2.4.2	Slot 4	10
2.4.3	Slot 5	11
2.4.4	Slot 6	12
2.4.5	Slot 7	13
2.5	FID Slots	14
2.5.1	Slot 0	14
2.5.2	Slot 1	15
2.5.3	Slot 2	16
A	Summary	17
A.1	Status	17
A.2	Comments	17

1 Front

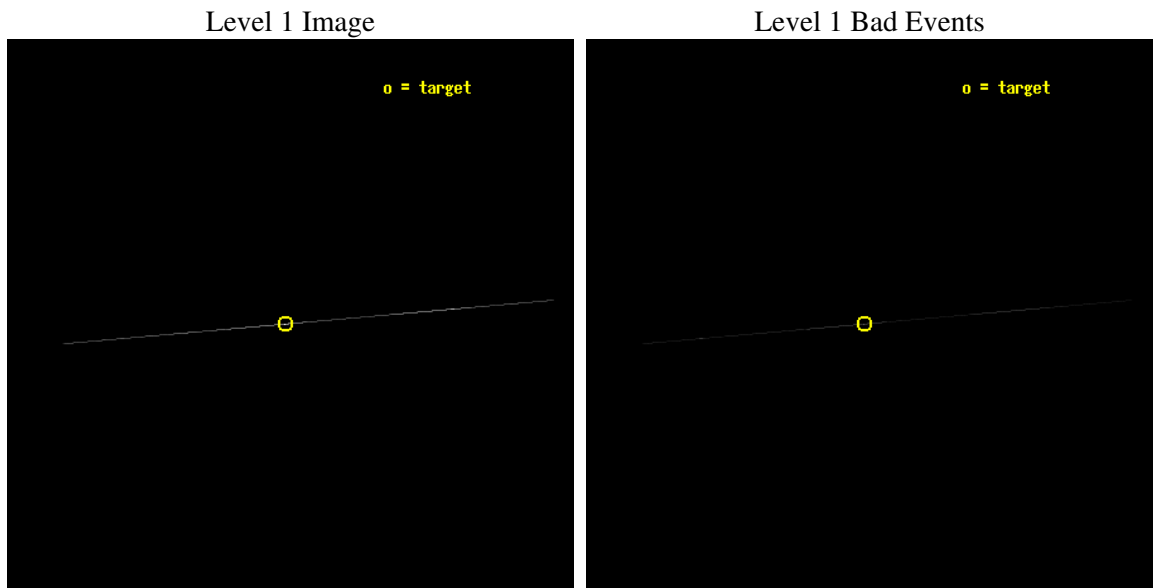
seq_num	590189
obs_id	1740
title	VERIFICATION OF AXAF TIMING CAPABILITY
observer	Dr. CXC Calibration
object	PSR B0540-69
ra_targ	85.04625
dec_targ	-69.332
ra_nom	85.019088688572
dec_nom	-69.329337777332
roll_nom	174.94269458045
revision	4
ontime	10932.25
livetime	10889.545898438
ontime4	10932.25
ontime5	10932.25
ontime6	10932.25
ontime7	10932.25
ontime8	10930.790088519
ontime9	10930.790089026
l2events	189014



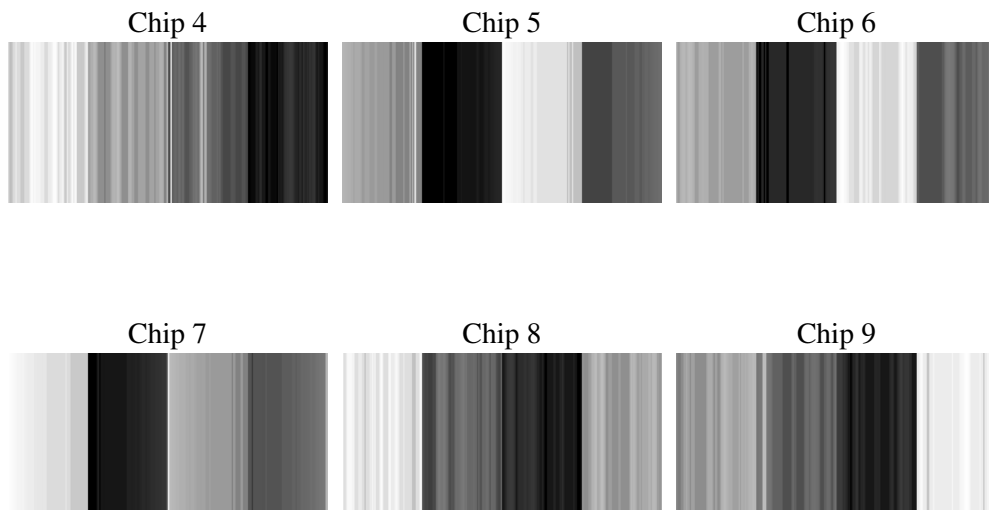
2 OBI

2.1 OBI

2.1.1 Images



2.1.2 Bias



2.1.3 Parameters

obi_num	0
ascdsver	7.6.10
caldsver	3.4.0
date	2007-05-27T06:04:29
revision	4

sched_exp_time	9885.000000
ontime	10932.25
ontime4	10932.25
ontime5	10932.25
ontime6	10932.25
ontime7	10932.25
ontime8	10930.790088519
ontime9	10930.790089026
l1events	252740

2.1.4 Events

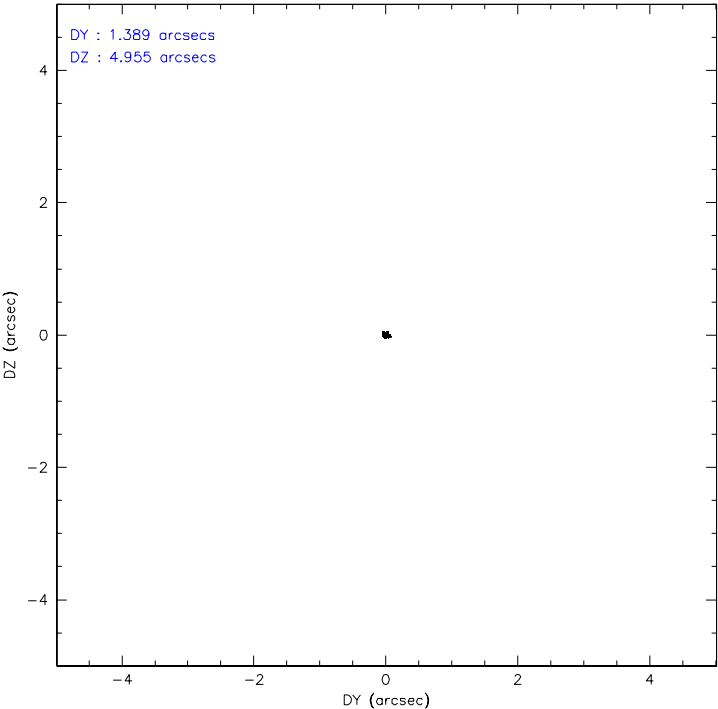
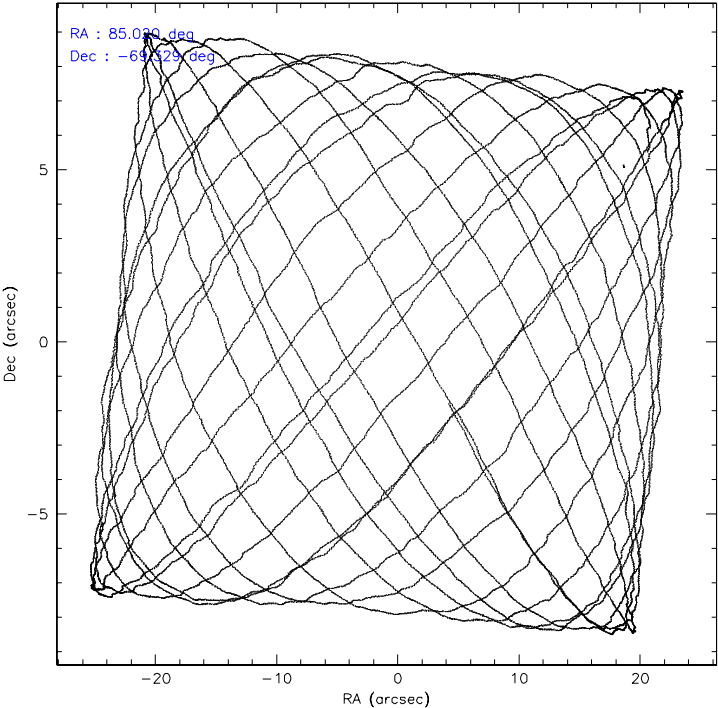
	ccd 4	ccd 5	ccd 6	ccd 7	ccd 8	ccd 9
level 1 events	17308	70569	16896	103427	27900	16640
rejected events	2286	6144	2436	7979	3447	3089
rejected %	13%	8%	14%	7%	12%	18%

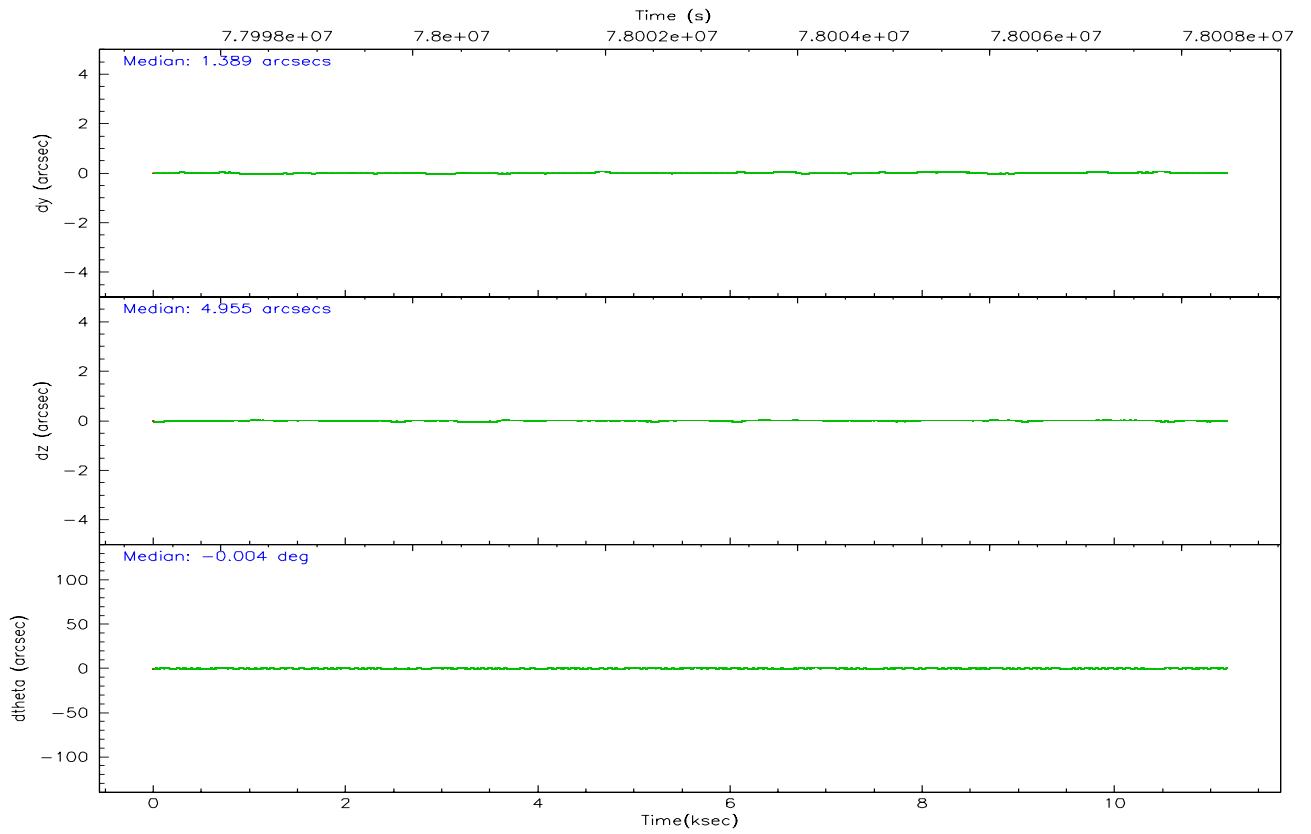
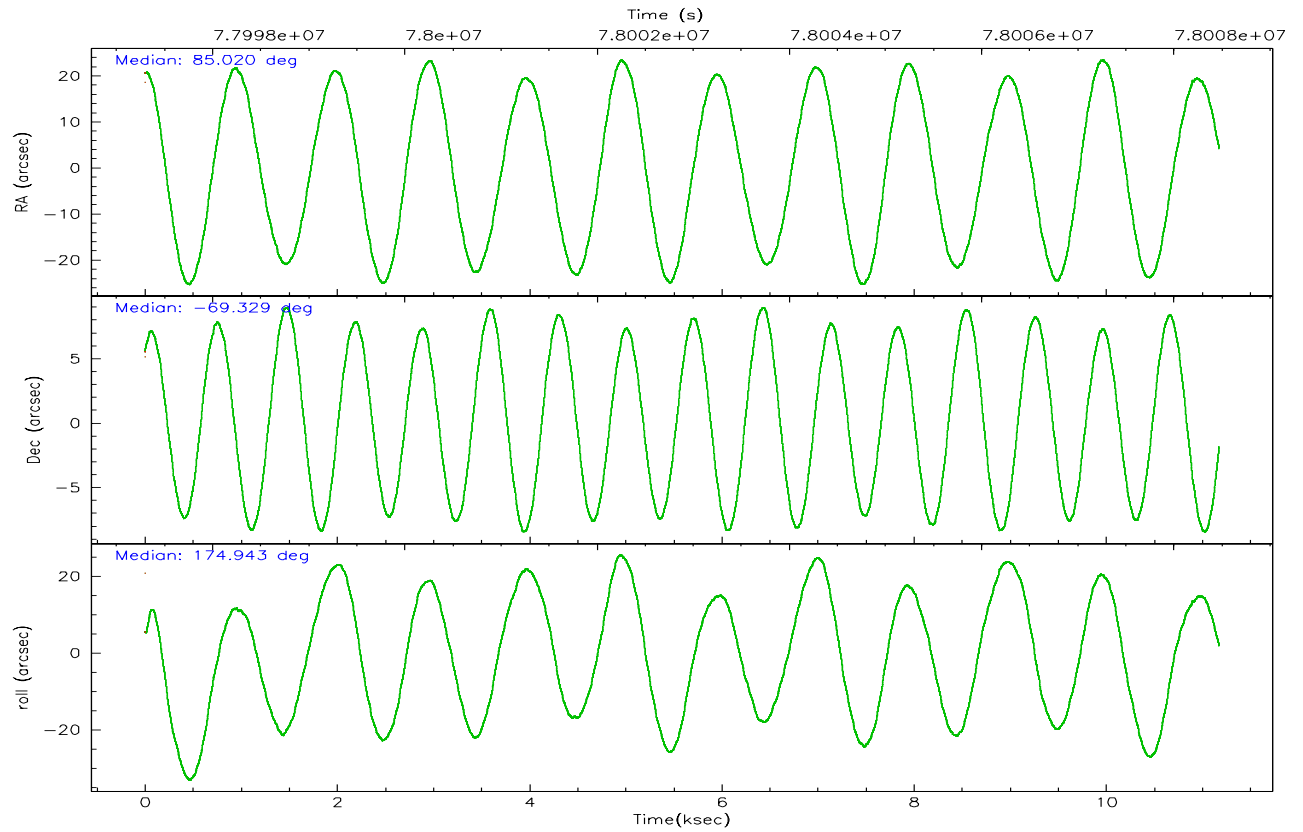
	ccd 4	ccd 5	ccd 6	ccd 7	ccd 8	ccd 9
grade 0 events	2081	19081	2536	21545	5370	2020
	12%	27%	15%	20%	19%	12%
grade 1 events	50	99	54	178	94	122
	0%	0%	0%	0%	0%	0%
grade 2 events	6367	17166	5556	24442	7431	4850
	36%	24%	32%	23%	26%	29%
grade 3 events	2051	2001	1952	10310	3111	1853
	11%	2%	11%	9%	11%	11%
grade 4 events	2207	1907	1930	9929	3082	2066
	12%	2%	11%	9%	11%	12%
grade 5 events	2232	6029	2380	7764	3349	2964
	12%	8%	14%	7%	12%	17%
grade 6 events	2320	24286	2488	29259	5463	2765
	13%	34%	14%	28%	19%	16%
grade 7 events	0	0	0	0	0	0
	0%	0%	0%	0%	0%	0%

2.2 Compared Parameters

Parameter	Planned	Actual	Parameter	Planned	Actual
Instrument	ACIS	ACIS	Obspar format version number	6	6
Detector	ACIS-456789	ACIS-456789	Obspar file type	PREDICTED	ACTUAL
Grating	NONE	NONE	Obspar update status	NONE	UPDATED
Data mode	CC33_FAINT	CC33_FAINT	Number of optional ACIS chips dropped	0	0
Observation mode	POINTING	POINTING	On-chip summing requested	N	N
Pointing RA	85.089266	85.01908868857225	Subarray requested	NONE	NONE
Pointing Dec	-69.317636	-69.32933777733189	Alternating exposures requested	N	N
Pointing Roll	174.851727	174.9426945804456	Primary exposure time	0.000000	0
SIM focus pos (mm)	-0.684267	-0.6828225247311905			
SIM defocus (mm)	0	0.001444936568705701			
SIM translation stage pos (mm)	-190.132523	-190.1400660498719			
SIM translation stage offset (mm)	0	0.00754346686406393			
Observation start time	77998585.184000	77997077.835265			
Observation start date	2000-06-21T18:15:21	2000-06-21T17:51:17			
Observation end time	78008470.184000	78008662.385692			
Observation end date	2000-06-21T21:00:06	2000-06-21T21:04:22			
Read mode	CONTINUOUS	CONTINUOUS			

2.3 Aspect



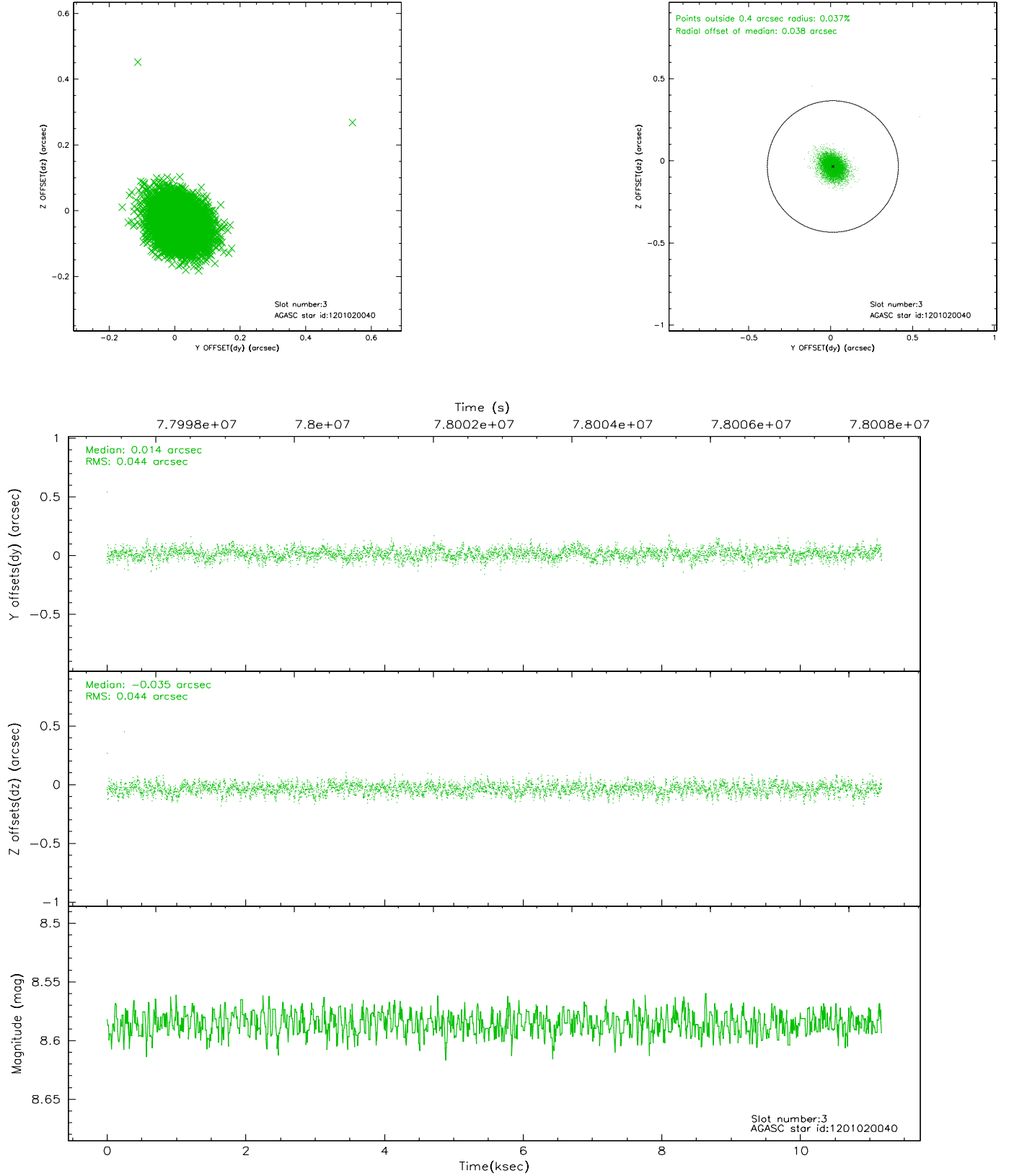


Slot Statistics

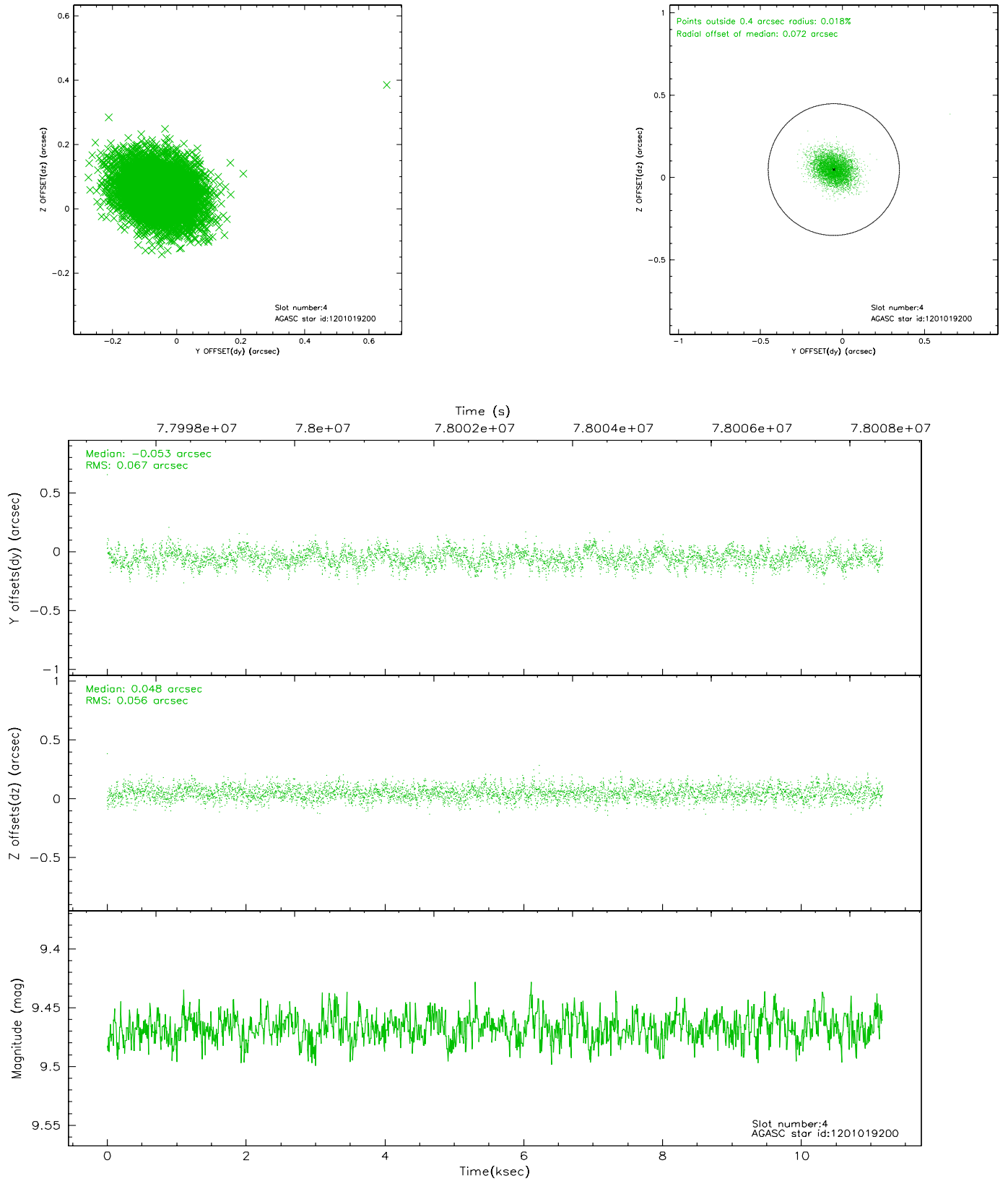
slot	status	id	mag	n_pts	med_dy	med_dz	dr1	dr2	ra	dec	mean_y	mean_z
0	FID	ACIS-S-2	7.11	2727	-0.026	0.020	0.007	0.011	0.000000	0.000000	-754.01	-1726.05
1	FID	ACIS-S-4	7.21	2725	-0.041	0.007	0.005	0.010	0.000000	0.000000	2159.04	181.96
2	FID	ACIS-S-5	7.23	2727	0.035	-0.018	0.006	0.011	0.000000	0.000000	-1806.21	176.12
3	GUIDE	1201020040	8.59	5451	0.014	-0.035	0.065	0.105	85.379163	-68.879396	-231.75	-1603.63
4	GUIDE	1201019200	9.47	5451	-0.053	0.048	0.091	0.150	84.213591	-68.777384	1311.55	-1826.23
5	GUIDE	1201406992	9.26	5451	0.061	-0.042	0.086	0.138	83.682859	-69.471866	1718.05	732.84
6	GUIDE	1200885760	9.46	5449	-0.104	0.070	0.092	0.151	83.723637	-68.777667	1946.53	-1755.87
7	GUIDE	1201020088	10.58	5449	0.082	-0.042	0.136	0.225	86.319248	-68.997756	-1476.88	-1273.30

2.4 Star Slots

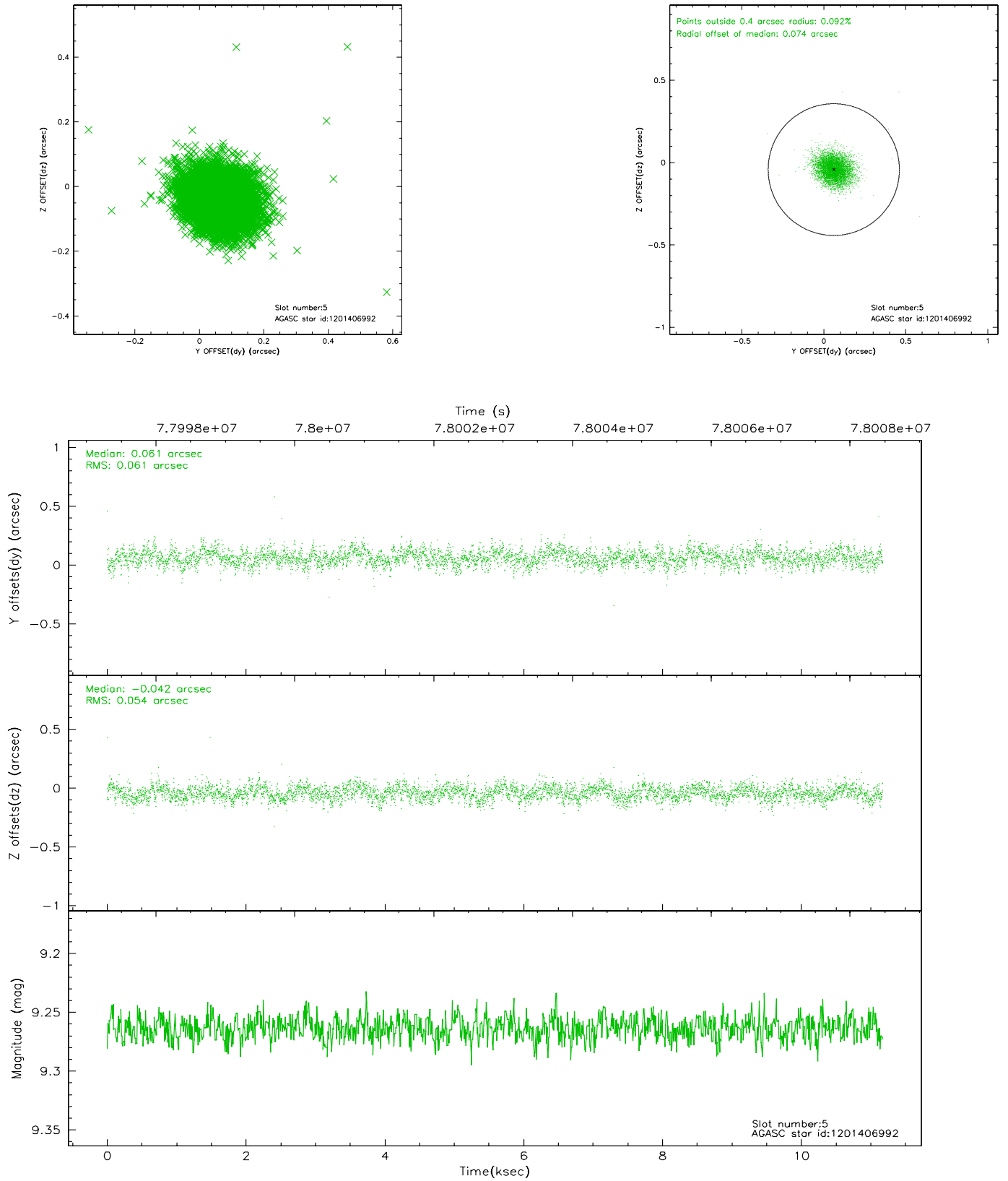
2.4.1 Slot 3



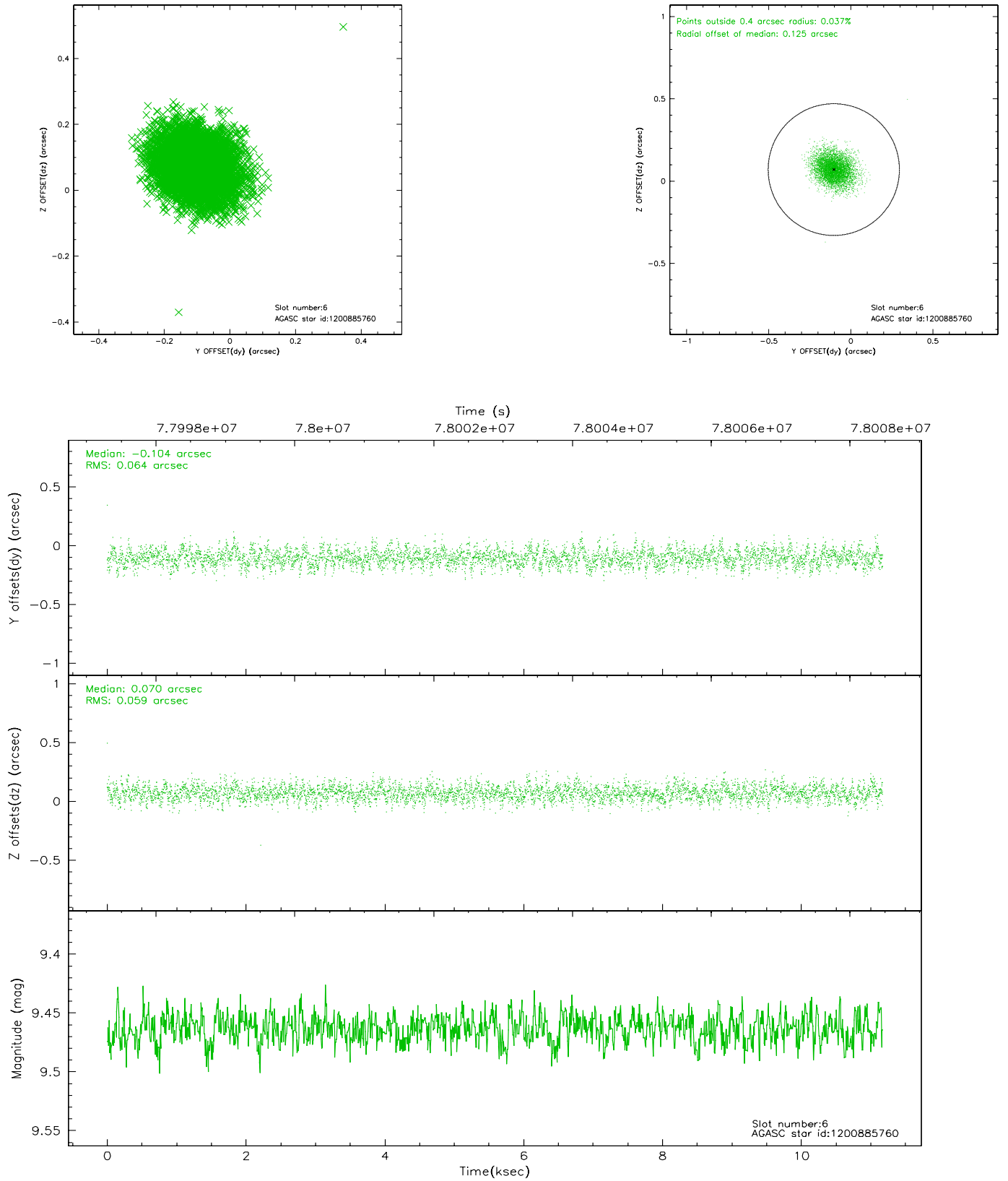
2.4.2 Slot 4



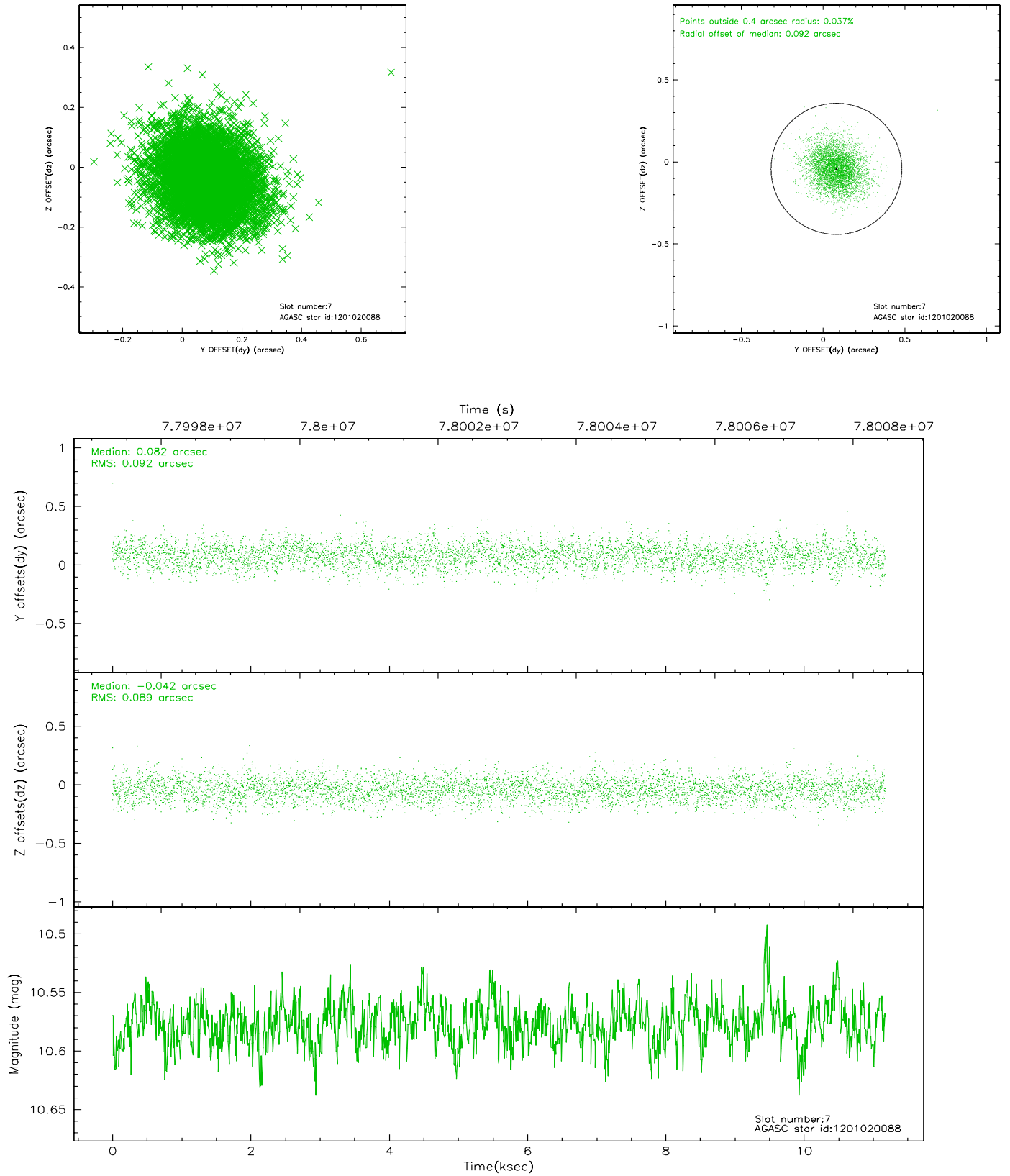
2.4.3 Slot 5



2.4.4 Slot 6

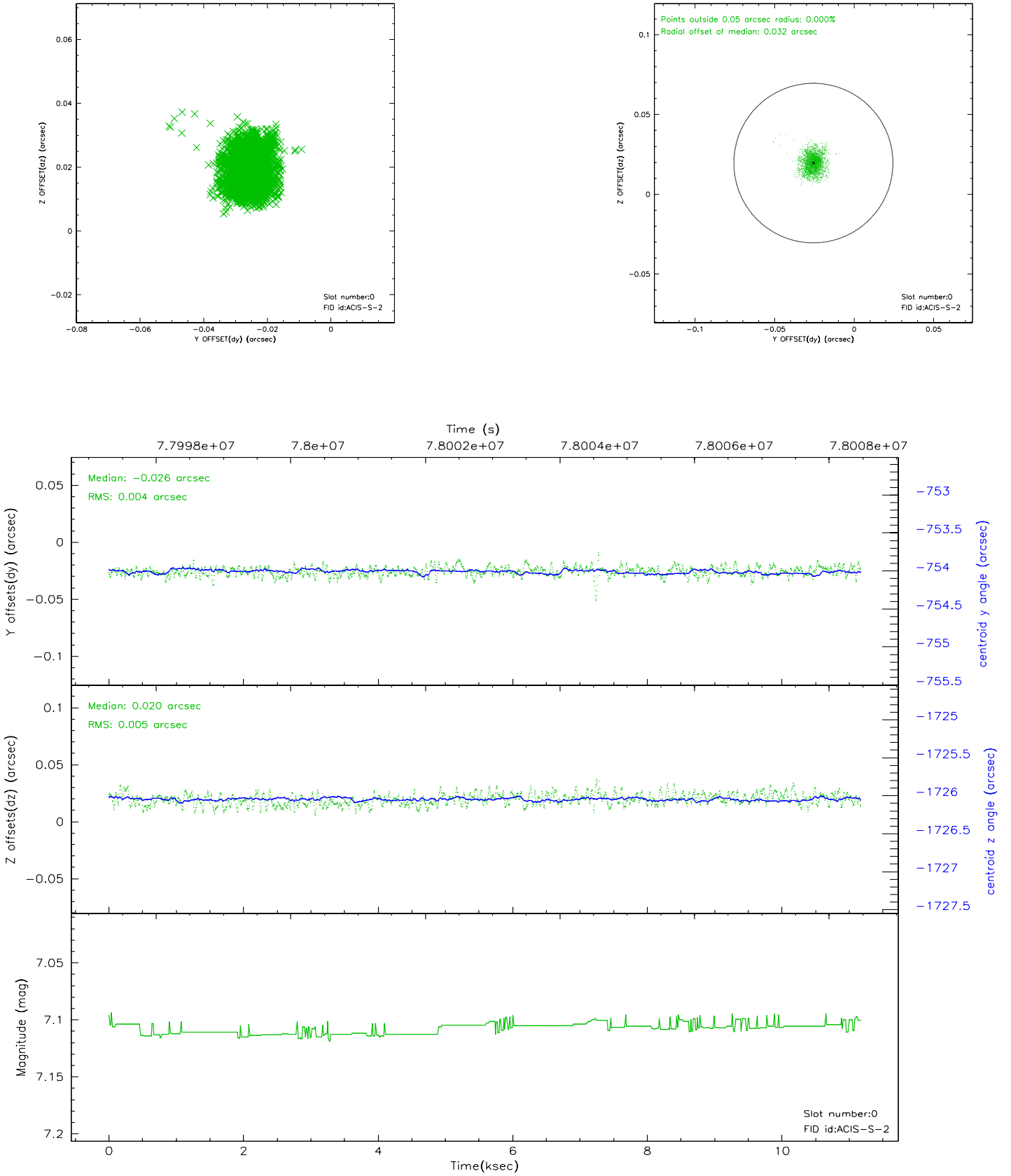


2.4.5 Slot 7

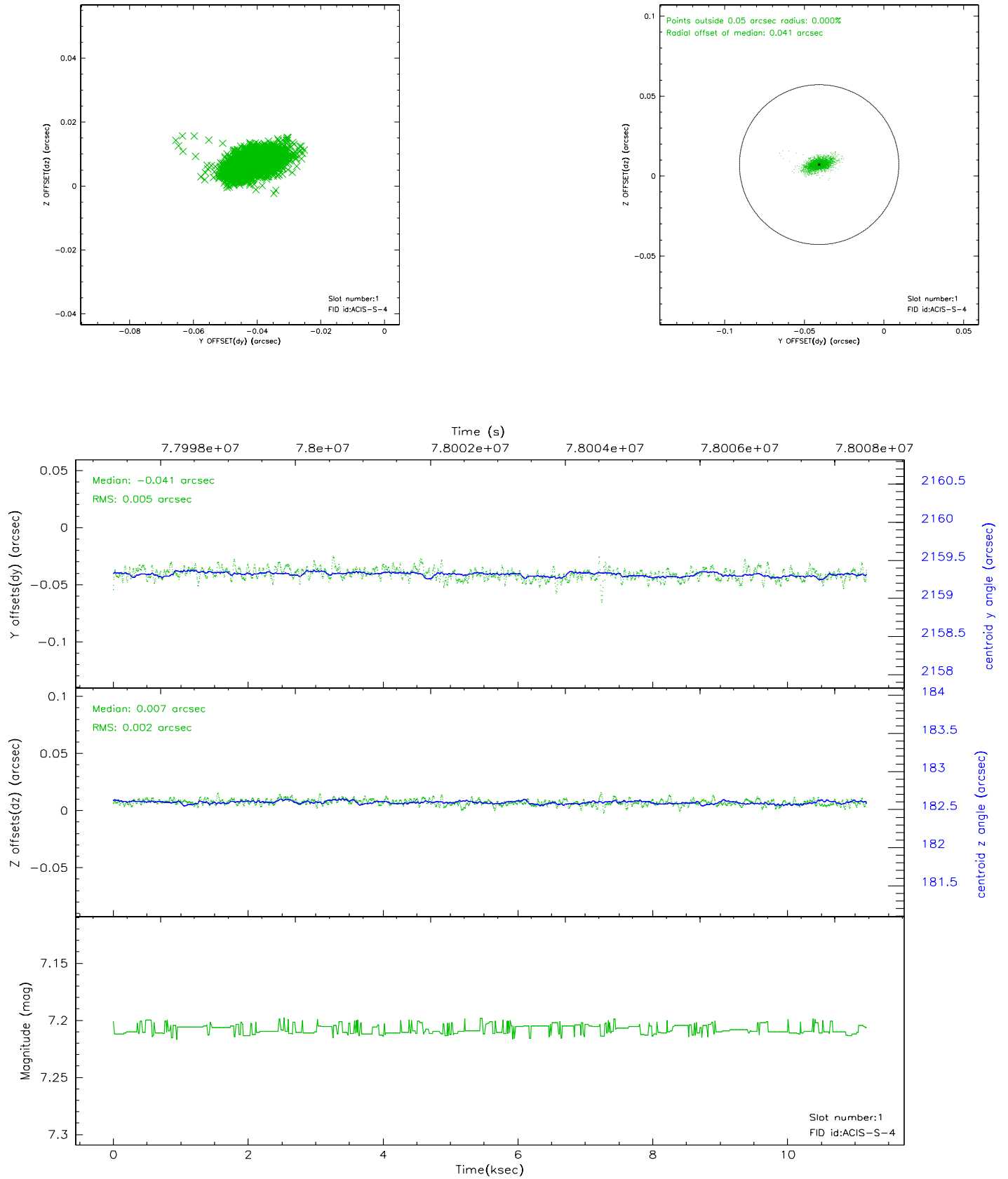


2.5 FID Slots

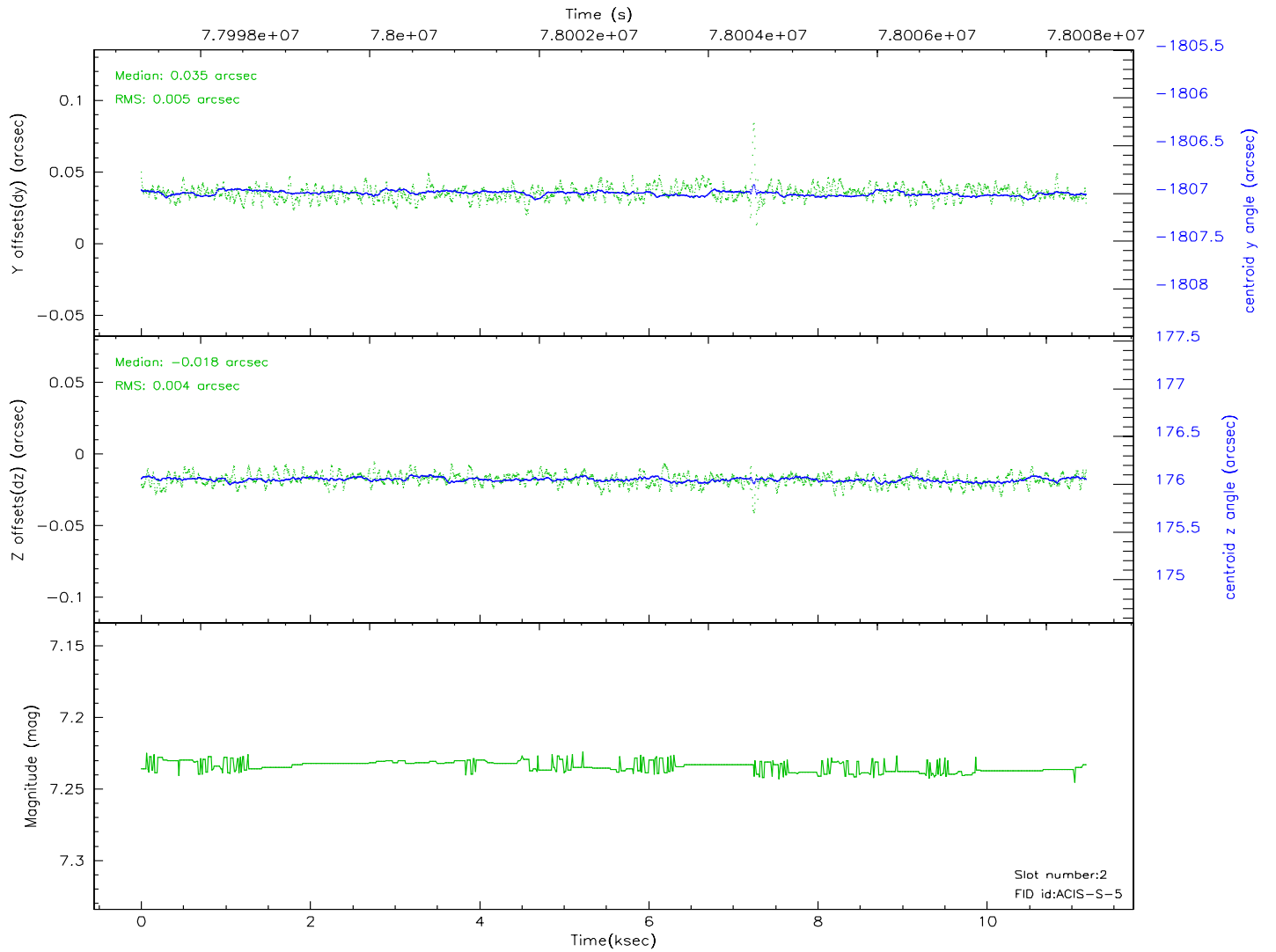
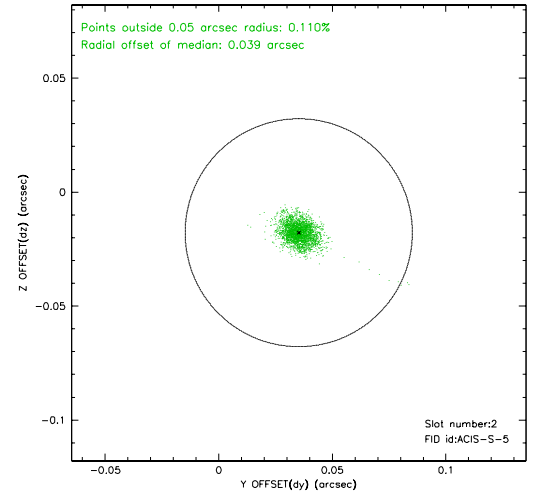
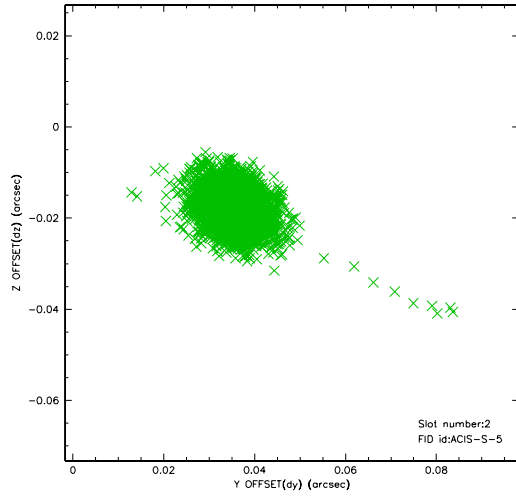
2.5.1 Slot 0



2.5.2 Slot 1



2.5.3 Slot 2



A Summary

A.1 Status

V&V Scientist	David Huenemoerder
V&V Date (YYYY-MM-DD)	2007.05.29
V&V Edition	1
V&V Disposition and Status	OK
V&V Charge Time	10.935

A.2 Comments