

V&V Reference Report

L2 ASCDS Version : 8.4.5

Observation 1680 - L2 Version 3
Chandra X-Ray Center

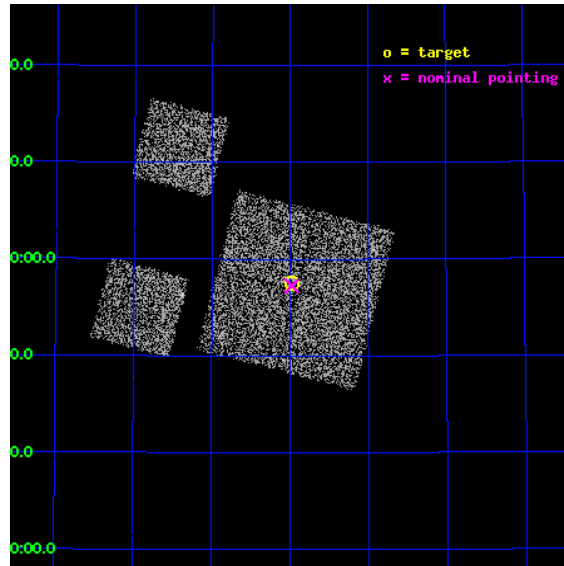
L2 Processing Date : Sep 20 2012

Contents

1	Front	2
2	OBI	3
2.1	OBI	3
2.1.1	Images	3
2.1.2	Bias	3
2.1.3	Parameters	4
2.1.4	Events	4
2.2	Compared Parameters	5
2.3	Aspect	6
2.4	Star Slots	9
2.4.1	Slot 3	9
2.4.2	Slot 4	10
2.4.3	Slot 5	11
2.4.4	Slot 6	12
2.4.5	Slot 7	13
2.5	FID Slots	14
2.5.1	Slot 0	14
2.5.2	Slot 1	15
2.5.3	Slot 2	16
A	Summary	17
A.1	Status	17
A.2	Comments	17

1 Front

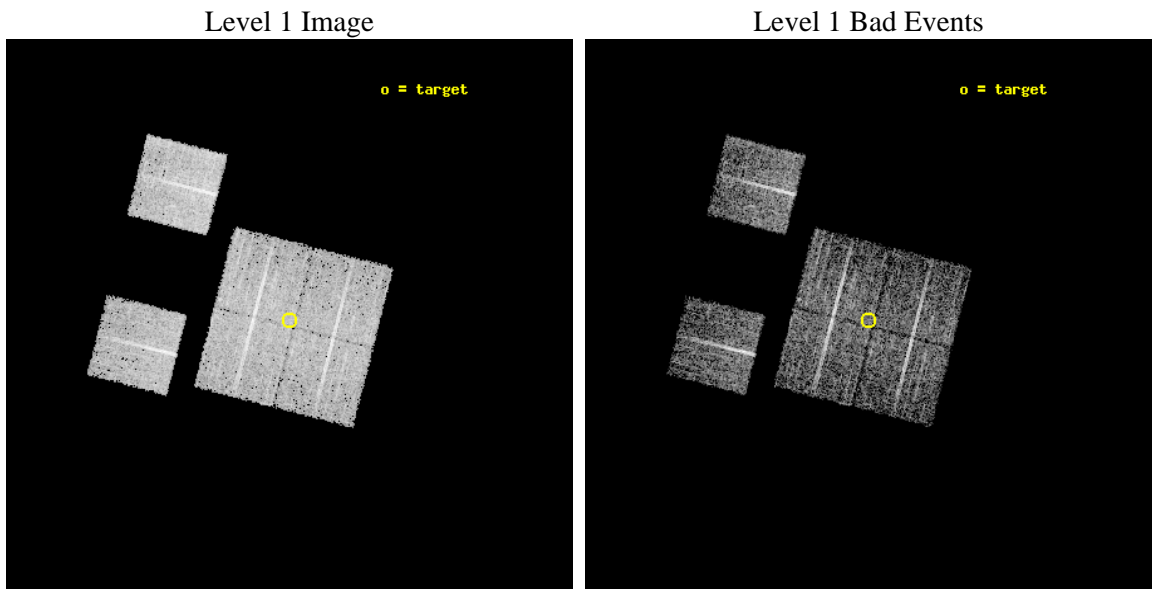
seq_num	900039	Sequence number
obs_id	1680	Observation id
title	LOCKMAN HOLE SHALLOW SURVEY	Proposal title
observer	Dr. Stephen Murray	Principal investigator
object	LOCKMAN HOLE #1	Source name
dtcycle	0	
cycle	P	events from which exps? Prim/Second/Both
ra_targ	162.745833	Observer's specified target RA [deg]
dec_targ	56.958889	Observer's specified target Dec [deg]
ra_nom	162.74439581092	Nominal RA [deg]
dec_nom	56.954168000978	Nominal Dec [deg]
roll_nom	284.34815170588	Nominal Roll [deg]
revision	3	Processing version of data
ontime	4758.4000044167	Sum of GTIs [s]
livetime	4698.1462783963	Livetime [s]
ontime0	4758.4000044167	Sum of GTIs [s]
ontime1	4755.1590640992	Sum of GTIs [s]
ontime2	4755.1590441763	Sum of GTIs [s]
ontime3	4758.4000044167	Sum of GTIs [s]
ontime6	4758.4000044167	Sum of GTIs [s]
ontime8	4755.1590640992	Sum of GTIs [s]
l2events	17924	Number of level 2 events



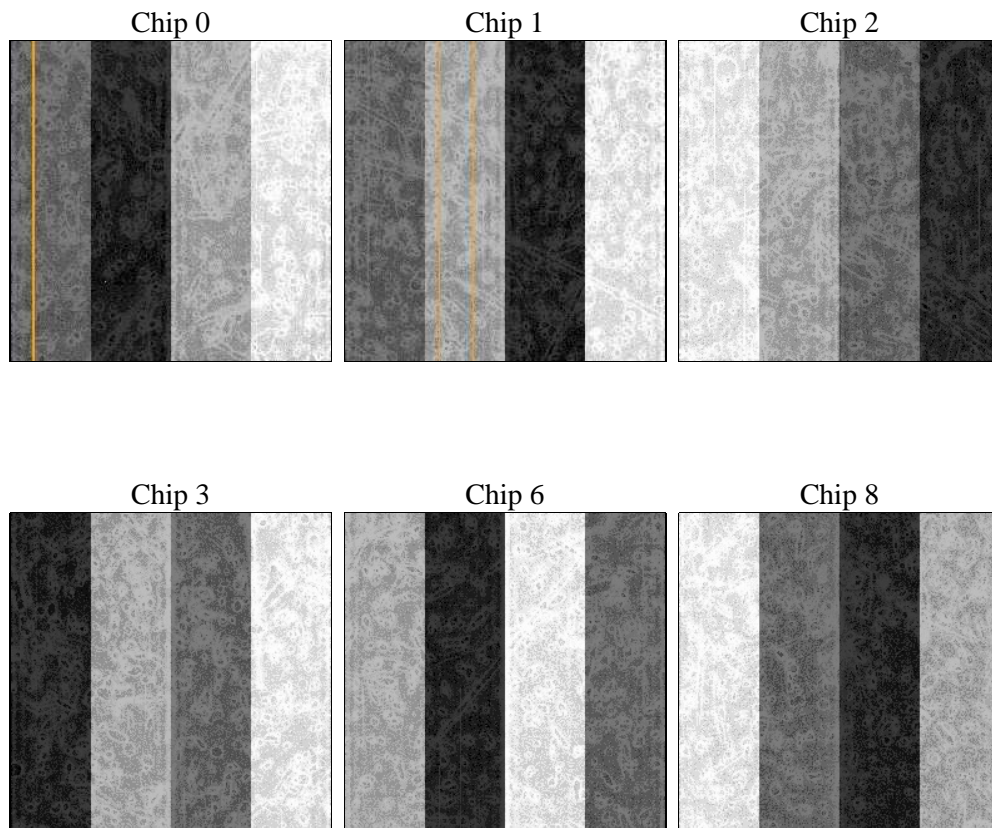
2 OBI

2.1 OBI

2.1.1 Images



2.1.2 Bias



2.1.3 Parameters

obi_num	0	Obi number	sched_exp_time	5000.000000	[s] Scheduled observation exposure time
ascdsver	8.4.5	Processing system revision	ontime	4758.4000044167	Sum of GTIs [s]
caldsver	4.5.1.1	 	ontime0	4758.4000044167	Sum of GTIs [s]
date	2012-09-20T12:44:13	Date and time of file creation	ontime1	4755.1590640992	Sum of GTIs [s]
revision	3	Processing version of data	ontime2	4755.1590441763	Sum of GTIs [s]
			ontime3	4758.4000044167	Sum of GTIs [s]
			ontime6	4758.4000044167	Sum of GTIs [s]
			ontime8	4755.1590640992	Sum of GTIs [s]
			l1events	186918	Number of level 1 events

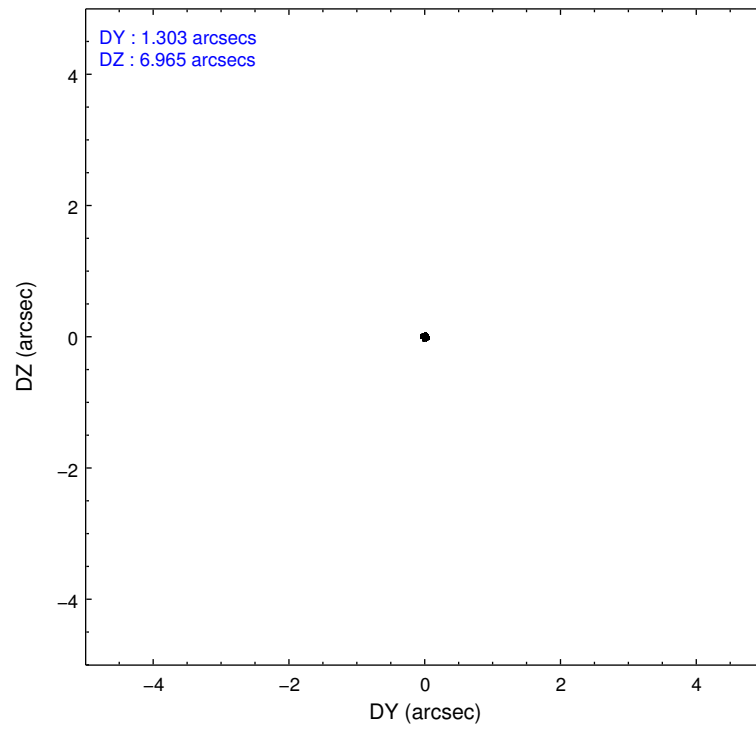
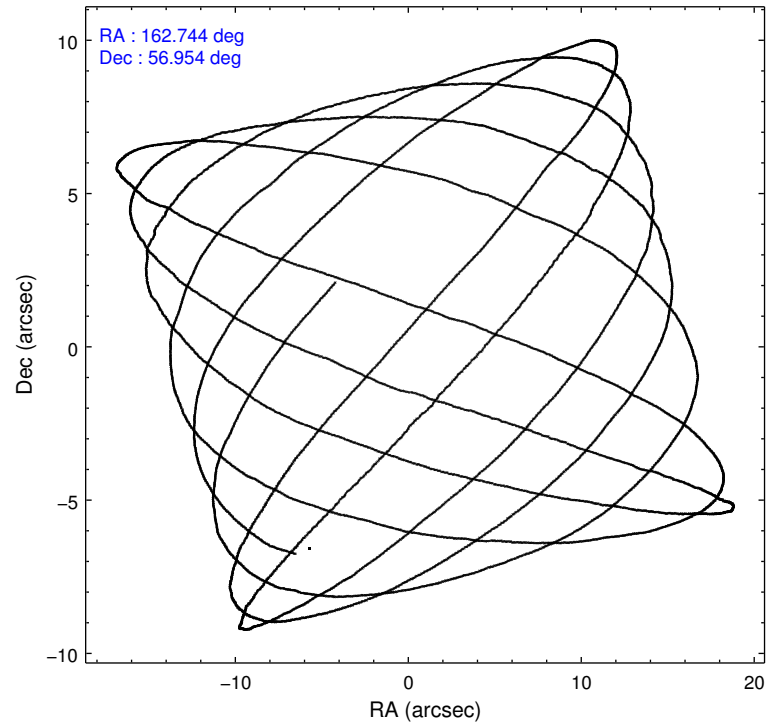
2.1.4 Events

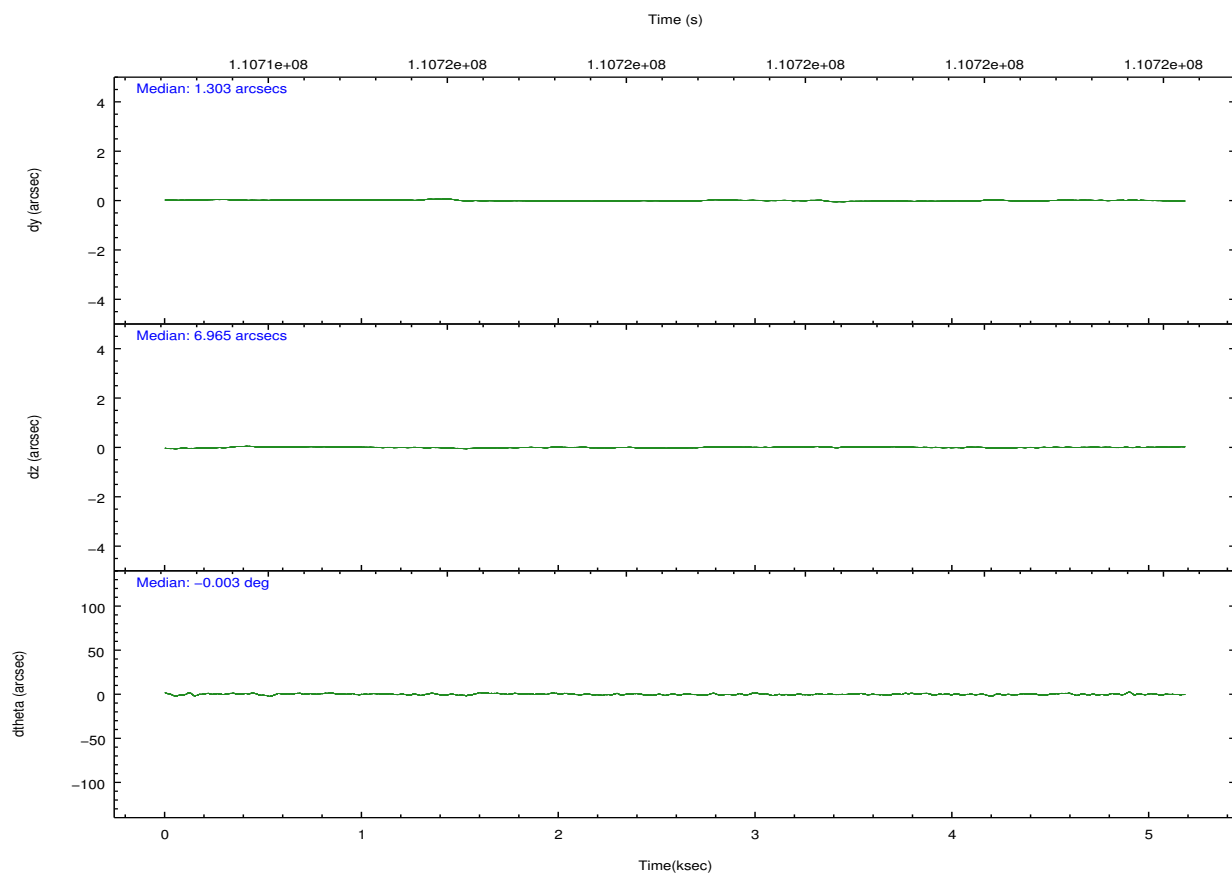
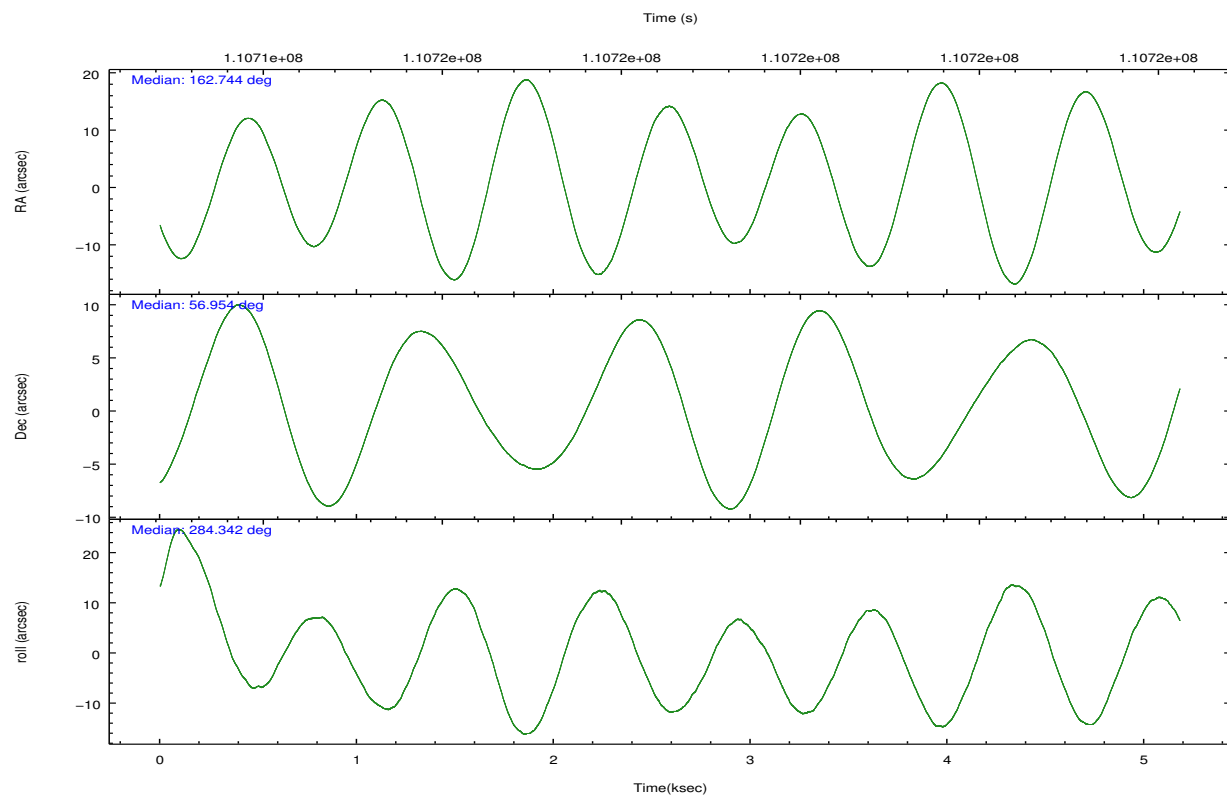
	ccd 0	ccd 1	ccd 2	ccd 3	ccd 6	ccd 8		ccd 0	ccd 1	ccd 2	ccd 3	ccd 6	ccd 8
level 1 events	27625	27433	30225	31023	29957	40655	grade 0 events	1526	1450	1436	1422	1300	2271
rejected events	23992	23804	26906	27686	26622	33194		5%	5%	4%	4%	4%	5%
rejected %	86%	86%	89%	89%	88%	81%	grade 1 events	11	12	17	12	18	27
								0%	0%	0%	0%	0%	0%
							grade 2 events	766	740	662	644	679	1764
								2%	2%	2%	2%	2%	4%
							grade 3 events	351	329	322	318	340	743
								1%	1%	1%	1%	1%	1%
							grade 4 events	347	403	317	345	355	709
								1%	1%	1%	1%	1%	1%
							grade 5 events	1102	1174	1009	1154	1283	1601
								3%	4%	3%	3%	4%	3%
							grade 6 events	647	708	585	611	663	1994
								2%	2%	1%	1%	2%	4%
							grade 7 events	22875	22617	25877	26517	25319	31546
								82%	82%	85%	85%	84%	77%

2.2 Compared Parameters

Parameter	Planned	Actual	Parameter	Planned	Actual
Instrument	ACIS	ACIS	Obspar format version number	7	7
Detector	ACIS-012368	ACIS-012368	Obspar file type	PREDICTED	ACTUAL
Grating	NONE	NONE	Obspar update status	NONE	UPDATED
Data mode	FAINT	FAINT	Number of optional ACIS chips dropped	0	0
Observation mode	POINTING	POINTING	On-chip summing requested	N	N
[deg] Pointing RA	162.709289	162.7443958109162	Subarray requested	NONE	NONE
[deg] Pointing Dec	56.973811	56.9541680009777	Alternating exposures requested	N	N
[deg] Pointing Roll	284.168914	284.3481517058837	[s] Primary exposure time	0.000000	3.2
[mm] SIM focus pos	-0.782348	-0.7809083437167272			
[mm] SIM defocus	0	0.001439871863259334			
[mm] SIM translation stage pos	-233.592463	-233.5874344608287			
[mm] SIM translation stage offset	0	-0.005018542100998502			
[s] Observation start time (MET)	110713865.184000	110713489.82154			
Observation start date	2001-07-05T09:50:01	2001-07-05T09:44:49			
[s] Observation end time (MET)	110718865.184000	110718999.19676			
Observation end date	2001-07-05T11:13:21	2001-07-05T11:16:39			
Read mode	TIMED	TIMED			

2.3 Aspect



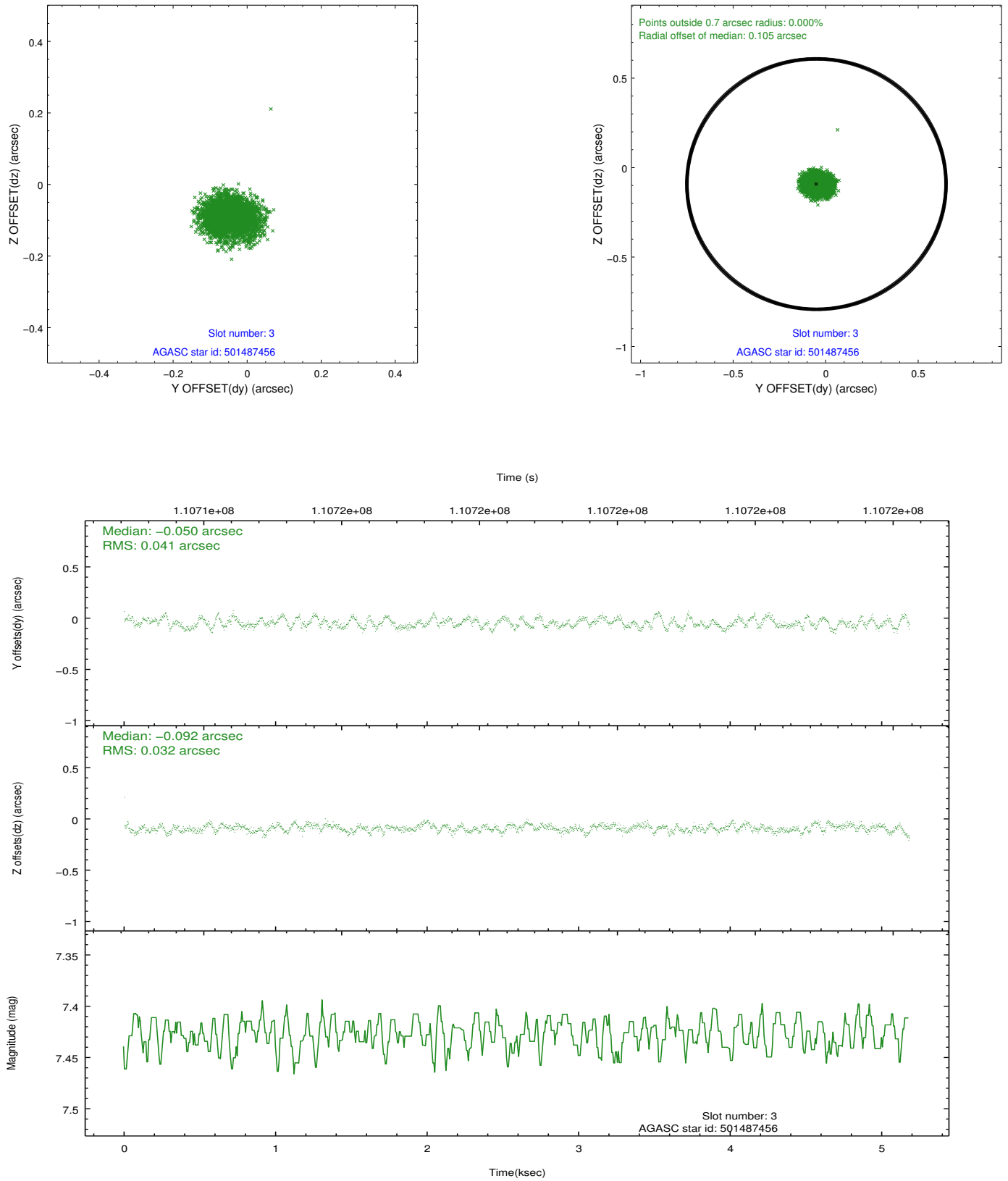


Slot Statistics

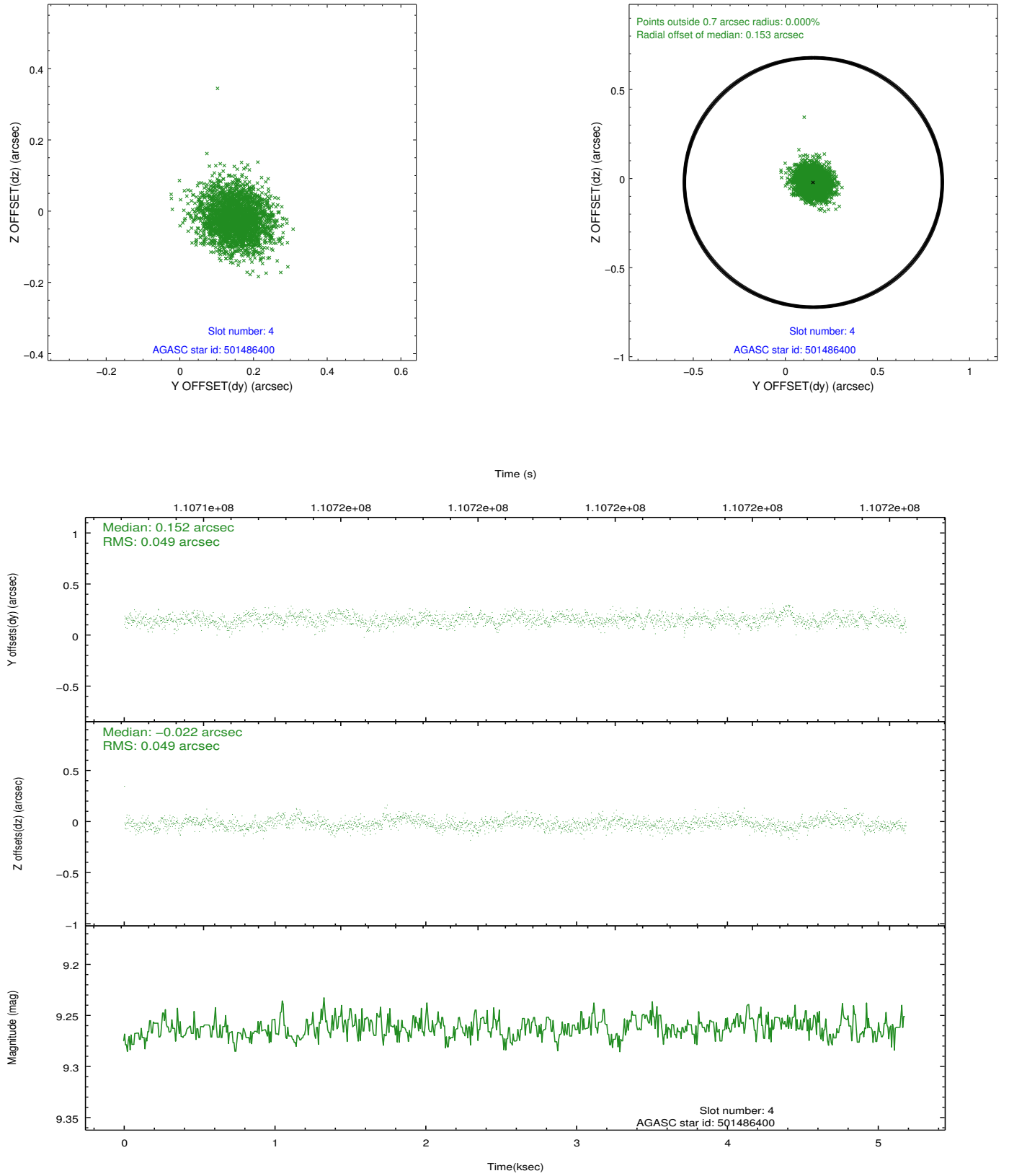
slot	status	id	mag	n_pts	med_dy	med_dz	dr1	dr2	ra	dec	mean_y	mean_z
0	FID	ACIS-I-2	7.15	1264	-0.037	-0.068	0.009	0.016	0.000000	0.000000	-755.66	-836.80
1	FID	ACIS-I-4	7.18	1263	-0.049	0.047	0.006	0.011	0.000000	0.000000	2157.83	1068.94
2	FID	ACIS-I-5	7.23	1262	-0.015	0.090	0.009	0.015	0.000000	0.000000	-1807.98	1068.12
3	GUIDE	501487456	7.43	2528	-0.050	-0.092	0.056	0.086	161.499463	56.920840	-417.42	-2345.98
4	GUIDE	501486400	9.26	2529	0.152	-0.022	0.074	0.118	162.514901	56.545412	1400.21	-751.86
5	GUIDE	501877264	9.31	2527	-0.119	0.120	0.105	0.167	163.254394	57.702218	-2289.96	1659.60
6	GUIDE	501488528	8.10	2528	-0.063	-0.086	0.065	0.102	162.150935	57.312270	-1452.48	-752.48
7	GUIDE	501486512	9.61	2523	0.082	0.080	0.097	0.153	163.579075	56.729186	1262.87	1452.82

2.4 Star Slots

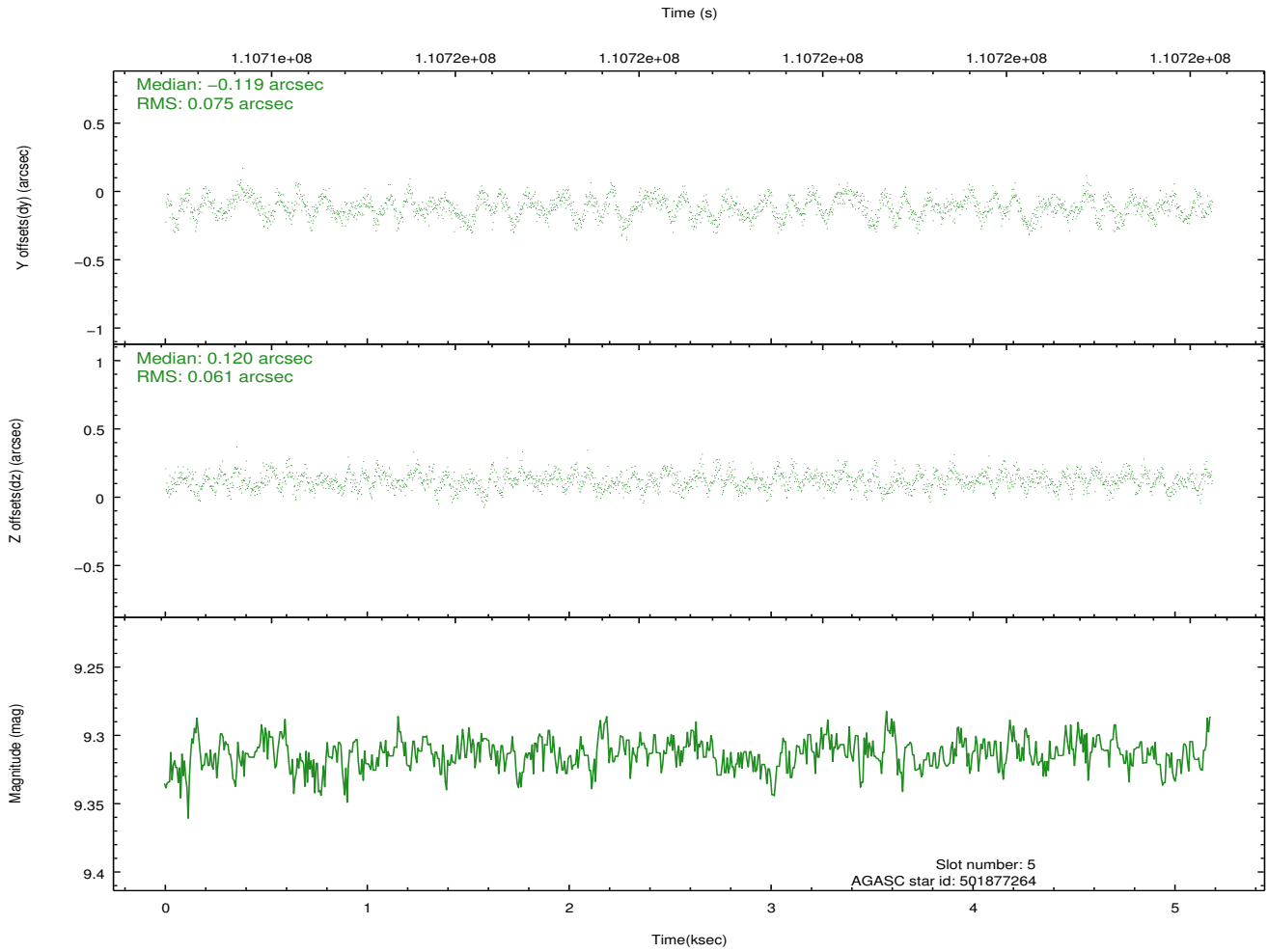
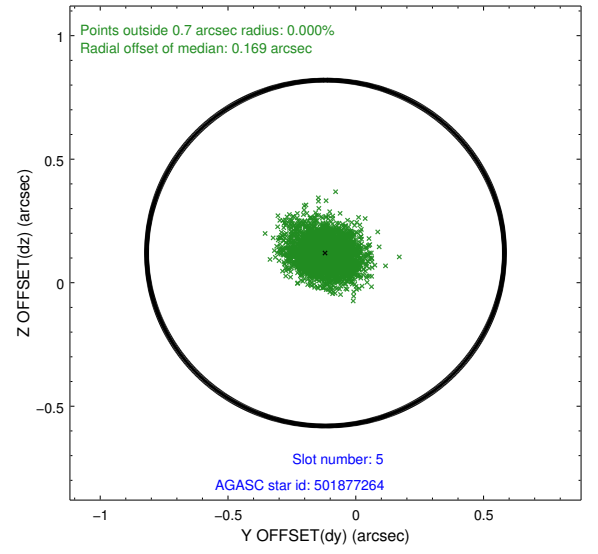
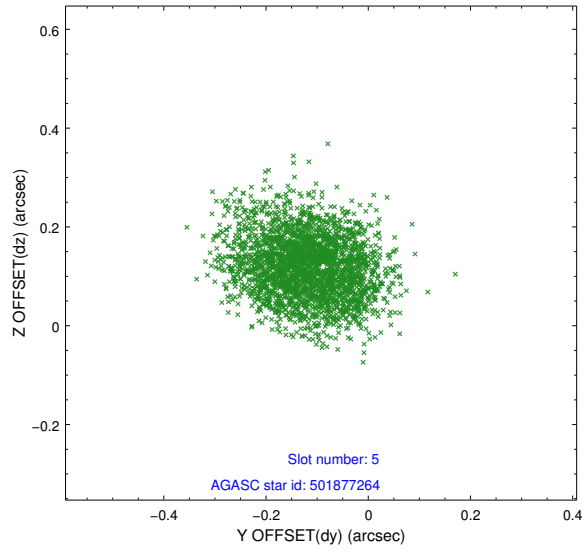
2.4.1 Slot 3



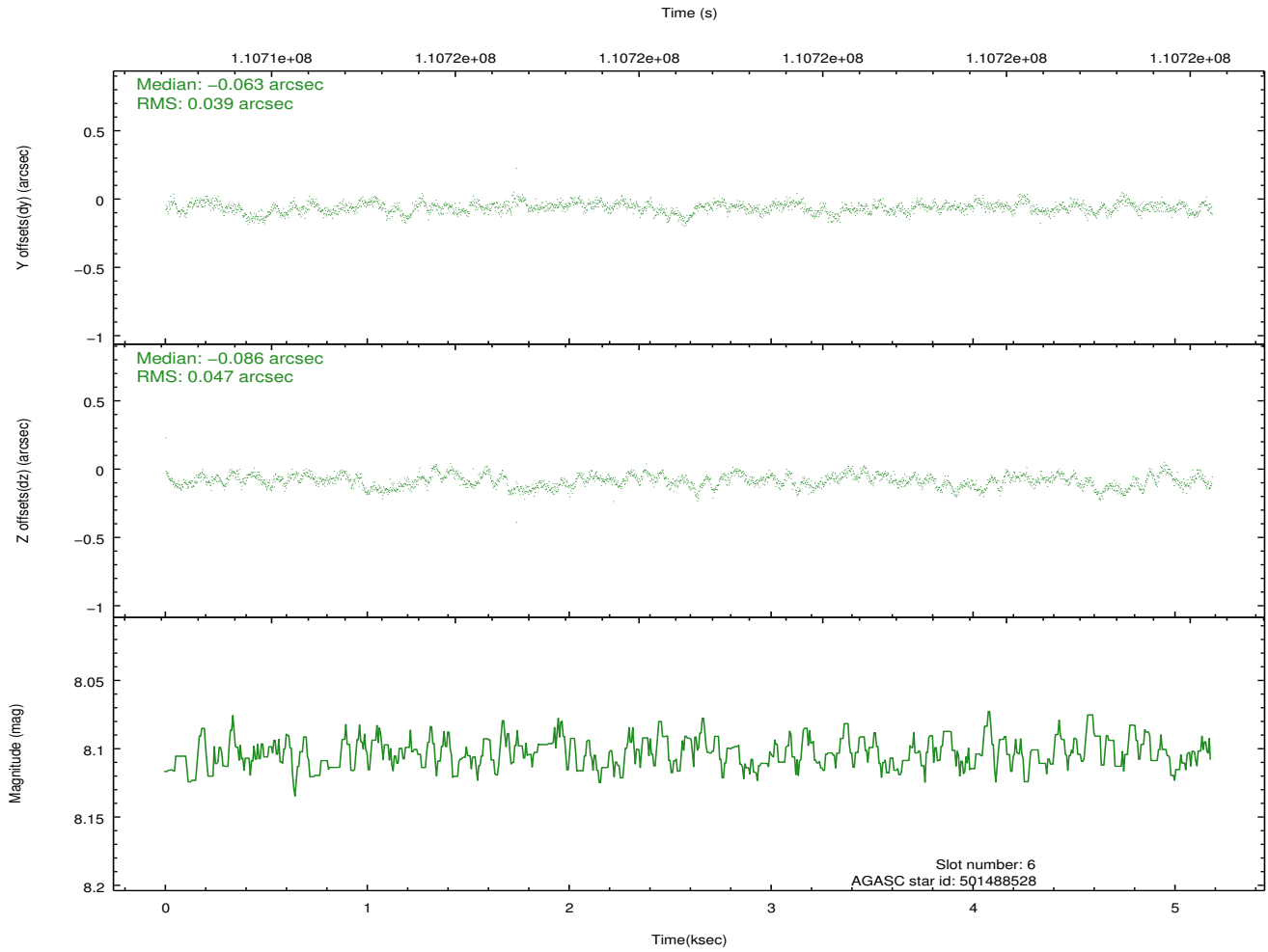
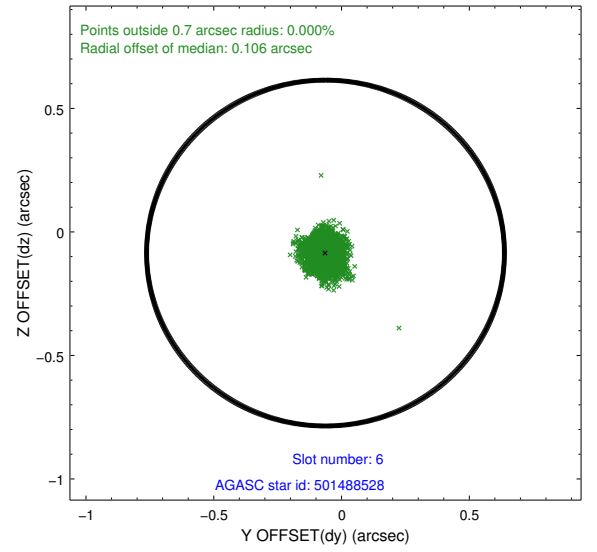
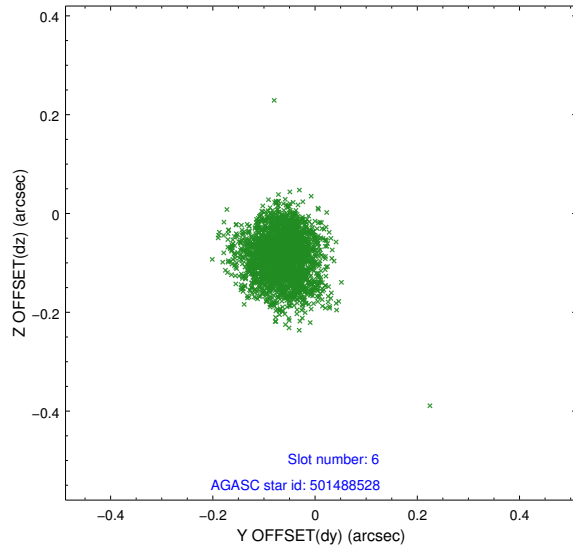
2.4.2 Slot 4



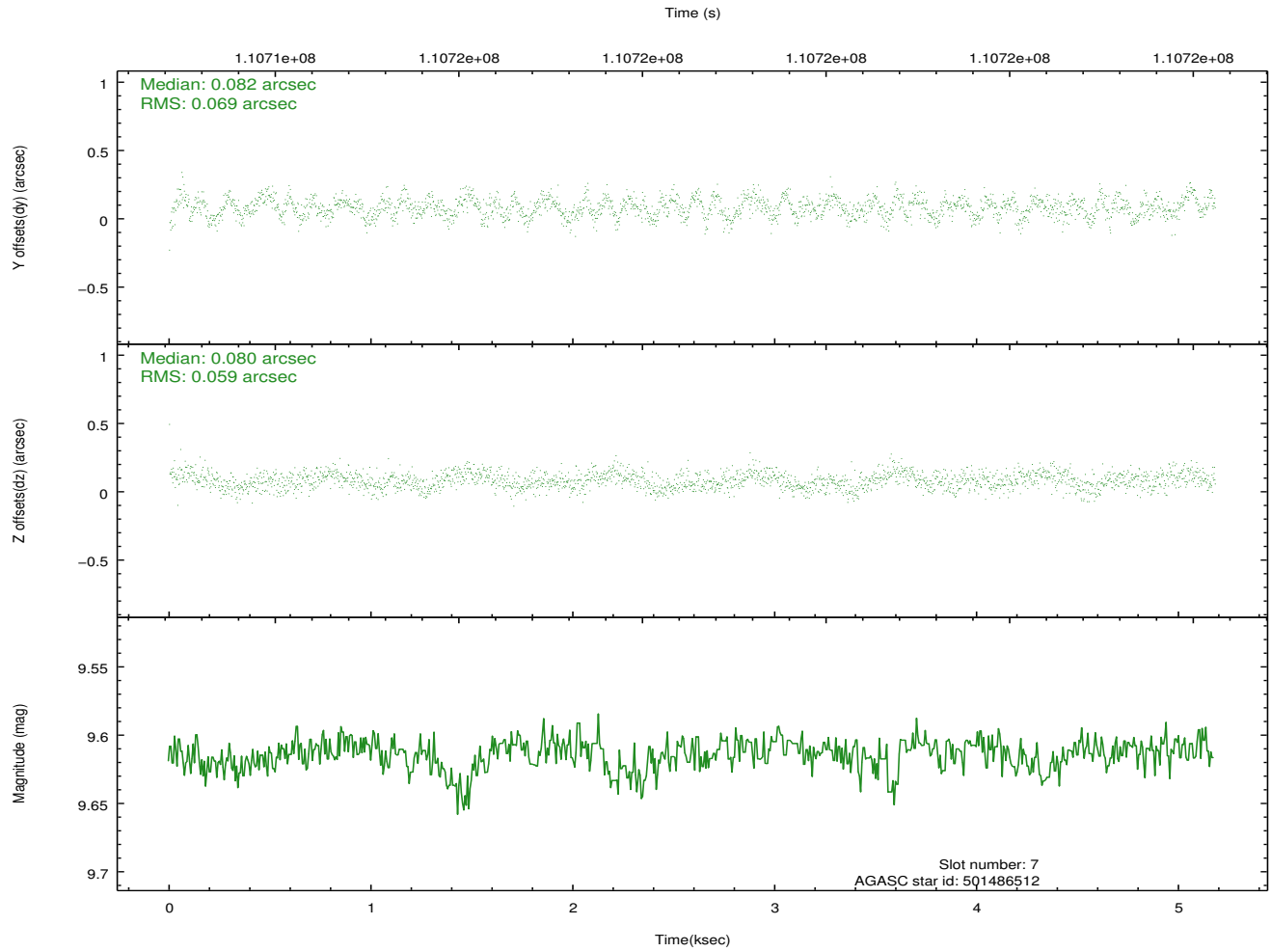
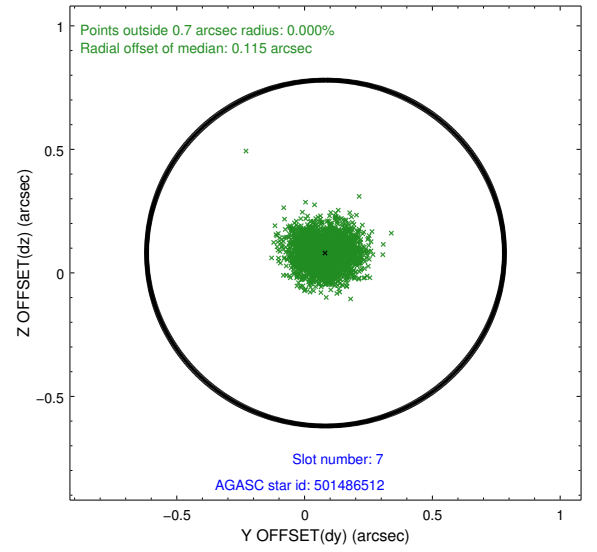
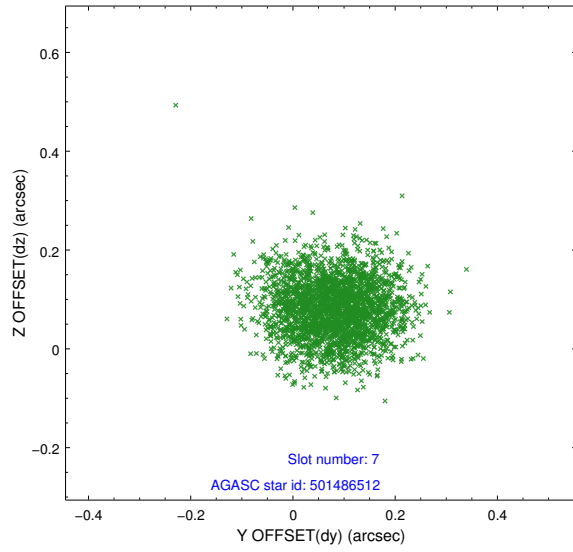
2.4.3 Slot 5



2.4.4 Slot 6

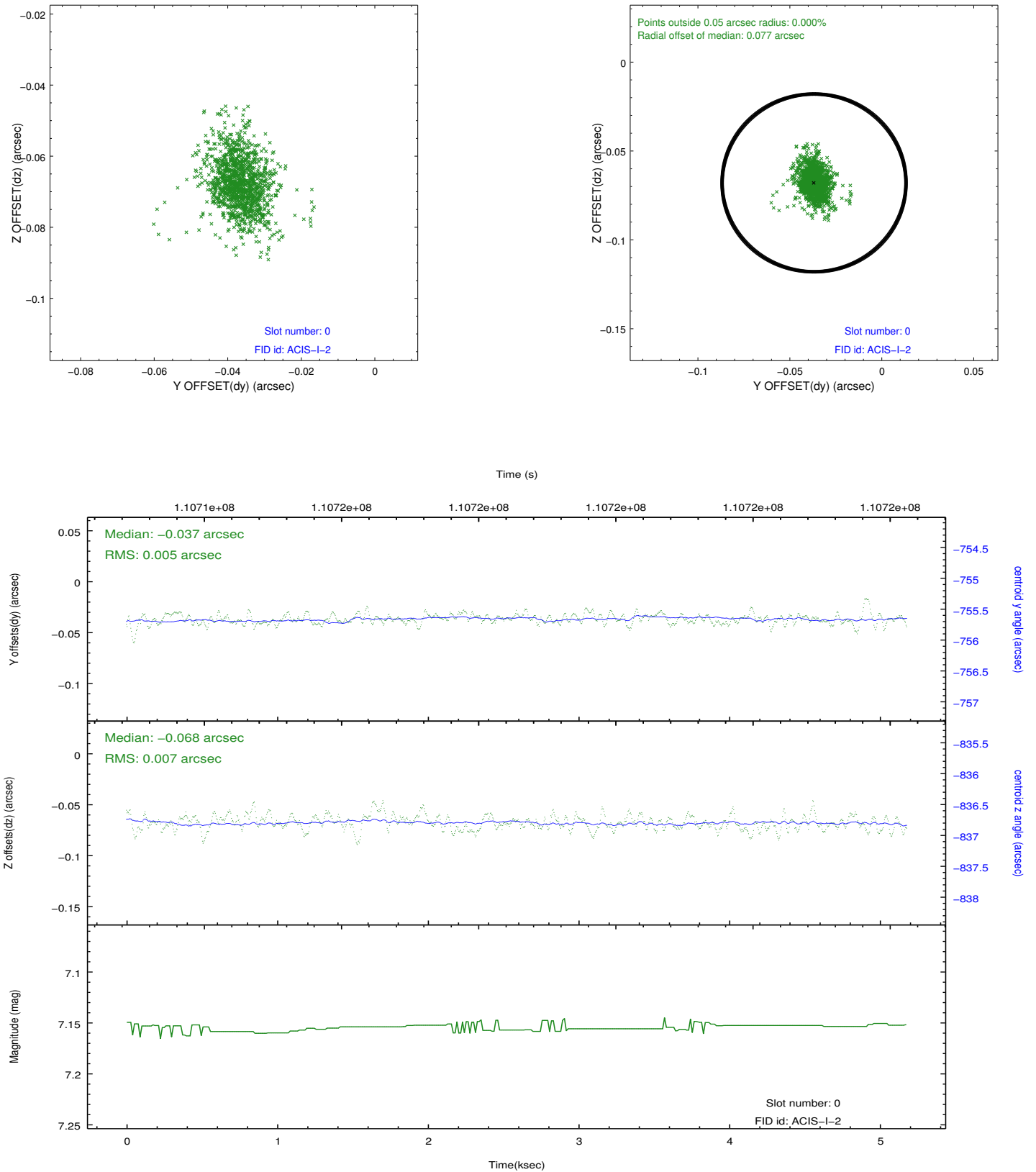


2.4.5 Slot 7

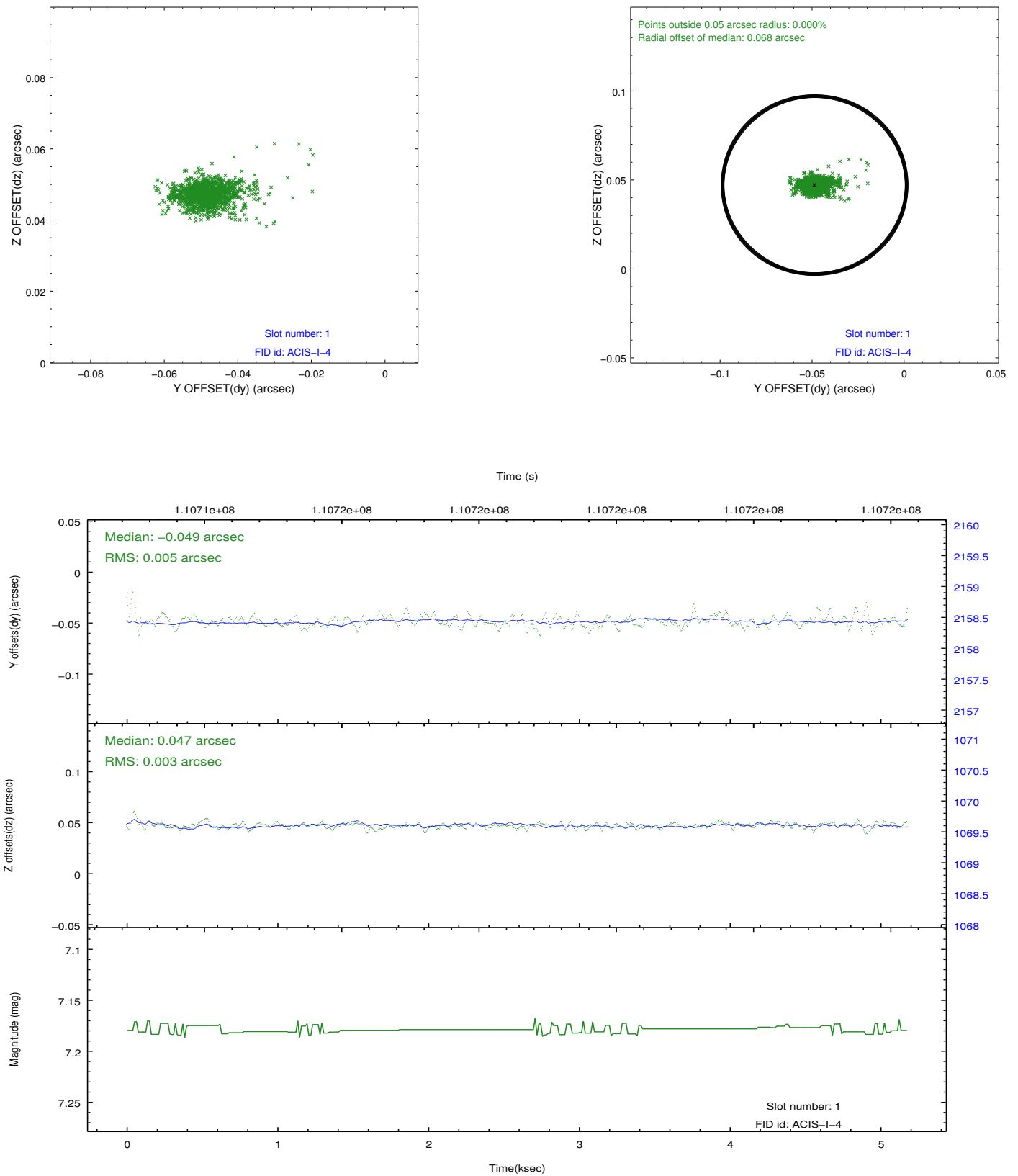


2.5 FID Slots

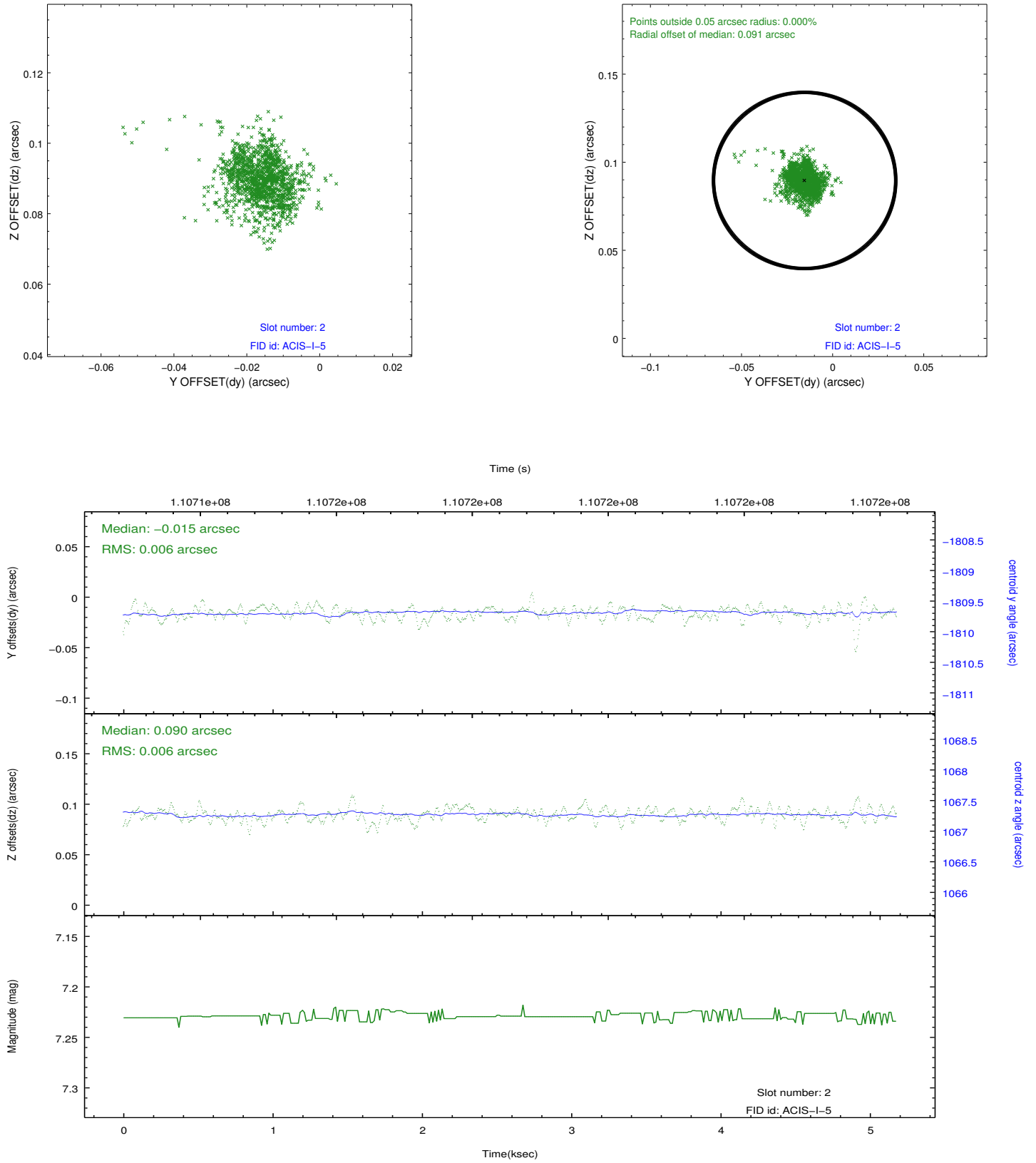
2.5.1 Slot 0



2.5.2 Slot 1



2.5.3 Slot 2



A Summary

A.1 Status

V&V Scientist	Jen Lauer
V&V Date (YYYY-MM-DD)	2012.09.21
V&V Edition	1
V&V Disposition and Status	OK
V&V Charge Time	4.761

A.2 Comments