

V&V Reference Report

L2 ASCDS Version : 10.1.1

Observation 16560 - L2 Version 2
Chandra X-Ray Center

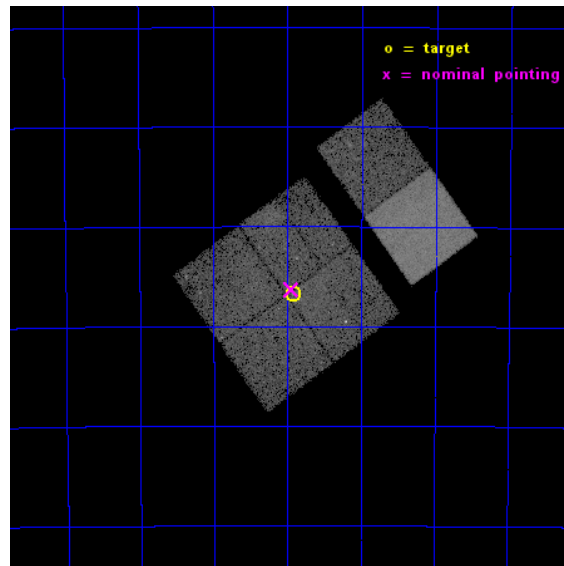
L2 Processing Date : Dec 9 2014

Contents

1	Front	2
2	OBI	3
2.1	OBI	3
2.1.1	Images	3
2.1.2	Bias	3
2.1.3	Parameters	4
2.1.4	Events	4
2.2	Compared Parameters	5
2.3	Aspect	6
2.4	Star Slots	9
2.4.1	Slot 3	9
2.4.2	Slot 4	10
2.4.3	Slot 5	11
2.4.4	Slot 6	12
2.4.5	Slot 7	13
2.5	FID Slots	14
2.5.1	Slot 0	14
2.5.2	Slot 1	15
2.5.3	Slot 2	16
A	Summary	17
A.1	Status	17
A.2	Comments	17

1 Front

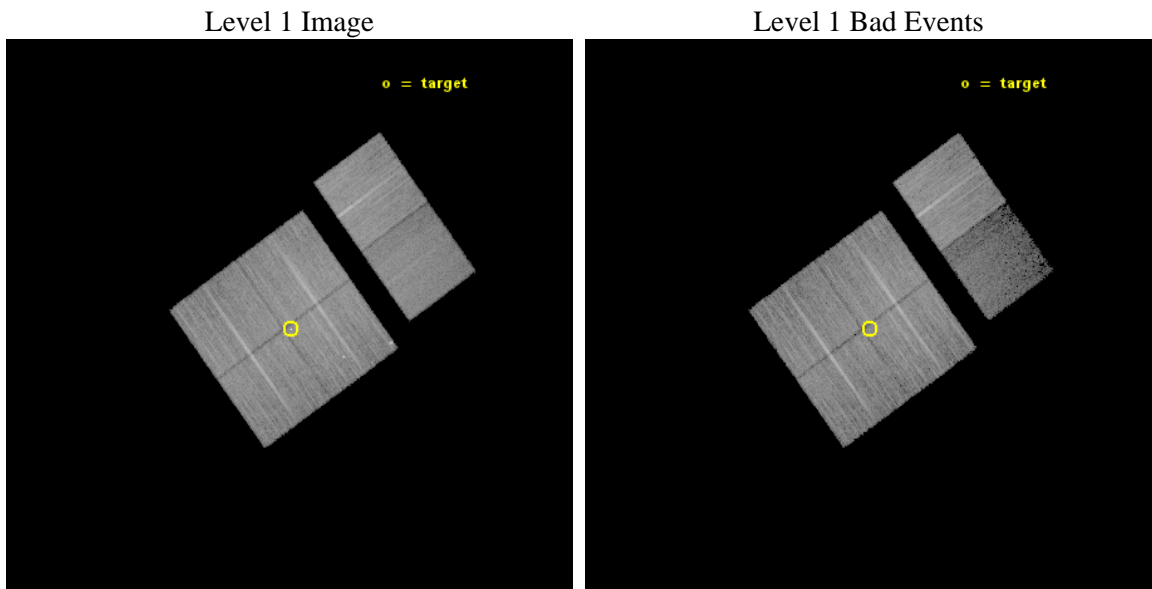
seq_num	401490	Sequence number
obs_id	16560	Observation id
title	Mysterious extended emission near the gamma-ray binary 1FLG J1018.6-5856	Proposal title
observer	Dr. George Pavlov	Principal investigator
object	1FLG J1018.6-5856	Source name
dtcycle	0	
cycle	P	events from which exps? Prim/Second/Both
ra_targ	154.731667	Observer's specified target RA [deg]
dec_targ	-58.946139	Observer's specified target Dec [deg]
ra_nom	154.73665510342	Nominal RA [deg]
dec_nom	-58.938467846016	Nominal Dec [deg]
roll_nom	54.212956974657	Nominal Roll [deg]
revision	2	Processing version of data
ontime	28031.999895632	Sum of GTIs [s]
livetime	27677.04183411	Livetime [s]
ontime0	28028.758915305	Sum of GTIs [s]
ontime1	28028.758915305	Sum of GTIs [s]
ontime2	28031.999895632	Sum of GTIs [s]
ontime3	28031.999895632	Sum of GTIs [s]
ontime6	28031.999895632	Sum of GTIs [s]
ontime7	28031.999895632	Sum of GTIs [s]
l2events	113470	Number of level 2 events



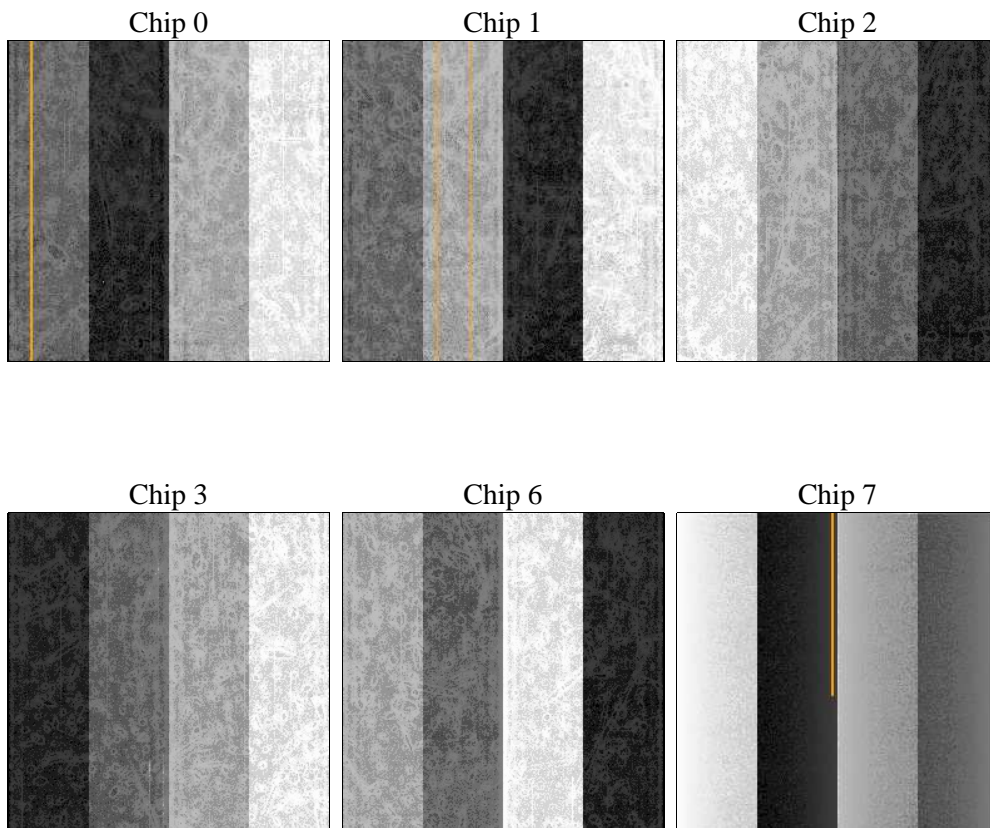
2 OBI

2.1 OBI

2.1.1 Images



2.1.2 Bias



2.1.3 Parameters

obi_num	0	Obi number	sched_exp_time	28063.148000	[s] Scheduled observation exposure time
ascdsver	10.3.1	Processing system revision	ontime	28031.999895632	Sum of GTIs [s]
caldsver	4.6.4	 	ontime0	28028.758915305	Sum of GTIs [s]
date	2014-12-09T09:10:21	Date and time of file creation	ontime1	28028.758915305	Sum of GTIs [s]
revision	2	Processing version of data	ontime2	28031.999895632	Sum of GTIs [s]
			ontime3	28031.999895632	Sum of GTIs [s]
			ontime6	28031.999895632	Sum of GTIs [s]
			ontime7	28031.999895632	Sum of GTIs [s]
			l1events	682827	Number of level 1 events

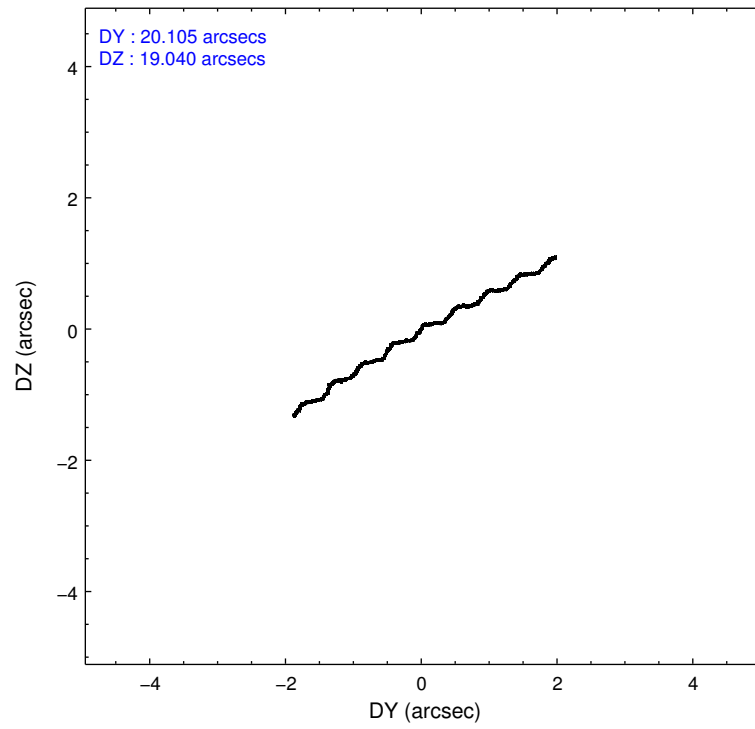
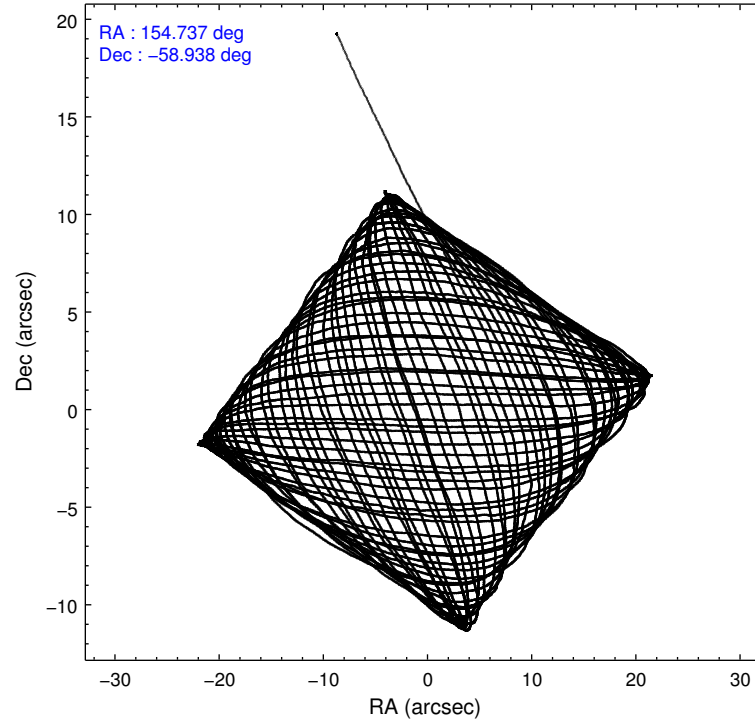
2.1.4 Events

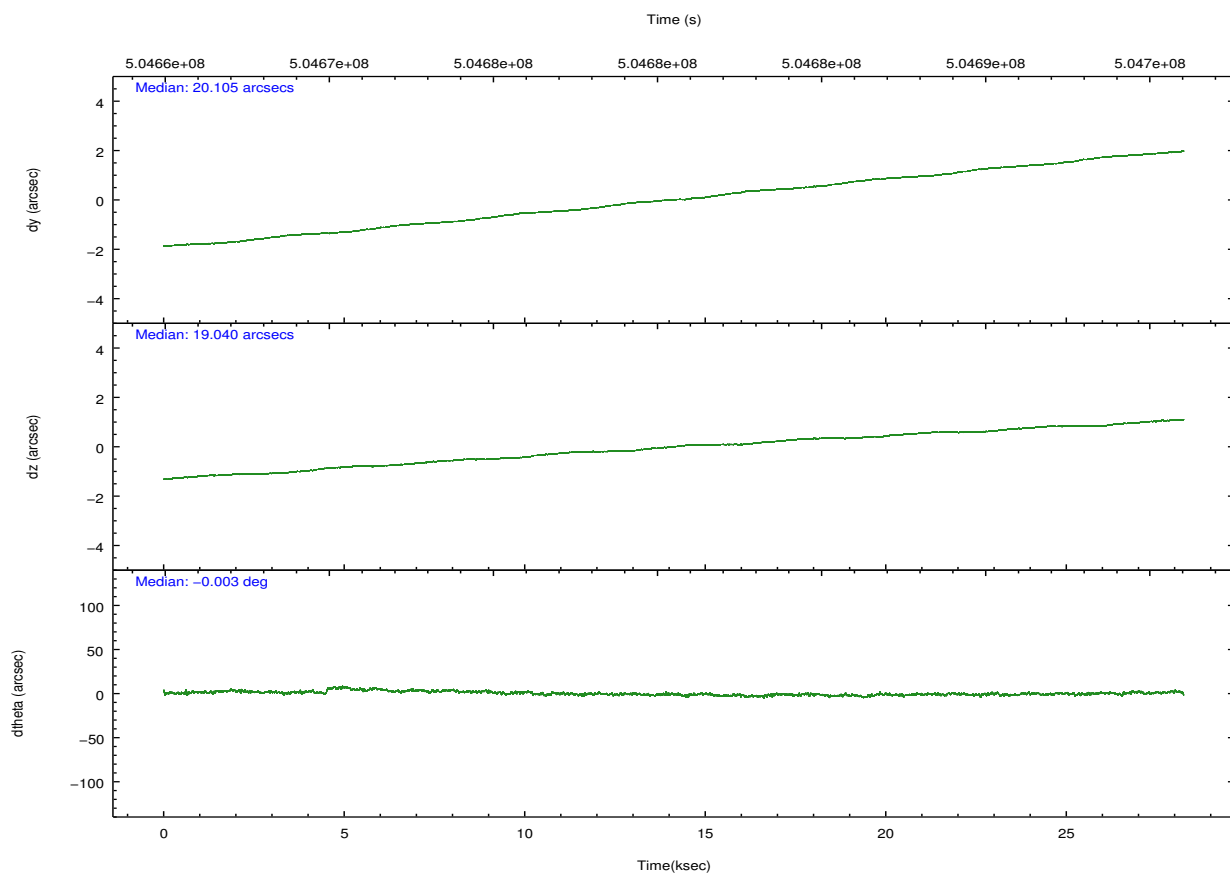
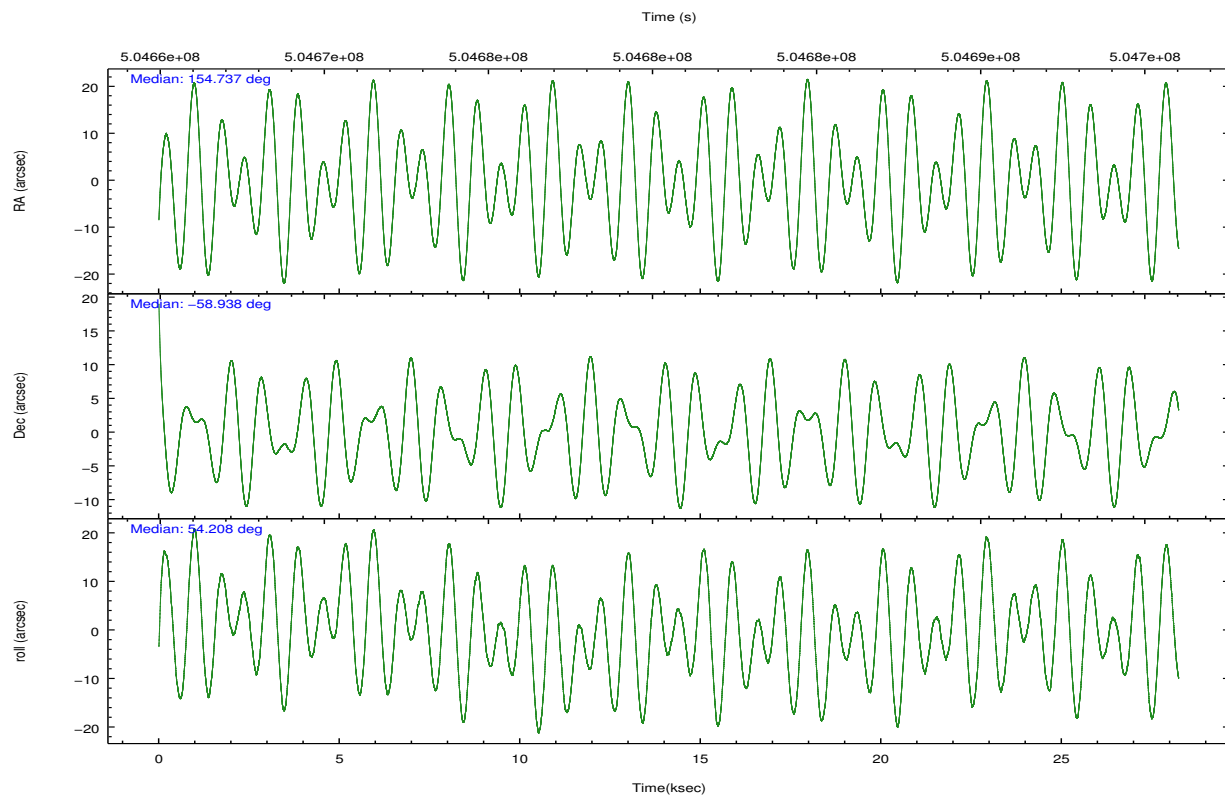
	ccd 0	ccd 1	ccd 2	ccd 3	ccd 6	ccd 7		ccd 0	ccd 1	ccd 2	ccd 3	ccd 6	ccd 7
level 1 events	110956	106286	128087	121956	127010	88532	grade 0 events	7721	7141	8808	9529	6178	6869
rejected events	94837	91011	110824	104666	112708	37877		6%	6%	6%	7%	4%	7%
rejected %	85%	85%	86%	85%	88%	42%	grade 1 events	82	69	90	93	75	233
								0%	0%	0%	0%	0%	0%
							grade 2 events	3873	3149	3891	3190	3513	12639
								3%	2%	3%	2%	2%	14%
							grade 3 events	1235	1304	1201	1305	1209	4798
								1%	1%	0%	1%	0%	5%
							grade 4 events	1275	1363	1417	1316	1151	4805
								1%	1%	1%	1%	0%	5%
							grade 5 events	2731	2957	2439	3155	3228	8931
								2%	2%	1%	2%	2%	10%
							grade 6 events	2017	2321	1951	1950	2253	21550
								1%	2%	1%	1%	1%	24%
							grade 7 events	92022	87982	108290	101418	109403	28707
								82%	82%	84%	83%	86%	32%

2.2 Compared Parameters

Parameter	Planned	Actual	Parameter	Planned	Actual
Instrument	ACIS	ACIS	Obspar format version number	7	7
Detector	ACIS-012367	ACIS-012367	Obspar file type	PREDICTED	ACTUAL
Grating	NONE	NONE	Obspar update status	NONE	UPDATED
Data mode	VFAINT	VFAINT	CCD I0 on	Y	Y
Observation mode	POINTING	POINTING	CCD I1 on	Y	Y
[deg] Pointing RA	154.731468	154.736655103425	CCD I2 on	Y	Y
[deg] Pointing Dec	-58.965852	-58.93846784601567	CCD I3 on	Y	Y
[deg] Pointing Roll	53.999830	54.21295697465652	CCD S0 on	N	N
[mm] SIM focus pos	-0.782348	-0.7809083437167272	CCD S1 on	N	N
[mm] SIM defocus	0	0.001439871863259334	CCD S2 on	O2	Y
[mm] SIM translation stage pos	-233.592463	-233.5874344608287	CCD S3 on	O1	Y
[mm] SIM translation stage offset	0	-0.005018542100998502	CCD S4 on	N	N
[s] Observation start time (MET)	504666556.184000	504665515.91744	CCD S5 on	N	N
Observation start date	2013-12-29T01:08:09	2013-12-29T00:51:55	Number of optional ACIS chips dropped	0	0
[s] Observation end time (MET)	504694619.184000	504694856.03155	On-chip summing requested	N	N
Observation end date	2013-12-29T08:55:52	2013-12-29T09:00:56	Subarray requested	NONE	NONE
Read mode	TIMED	TIMED	Alternating exposures requested	N	N
			[s] Primary exposure time	0.000000	3.2

2.3 Aspect



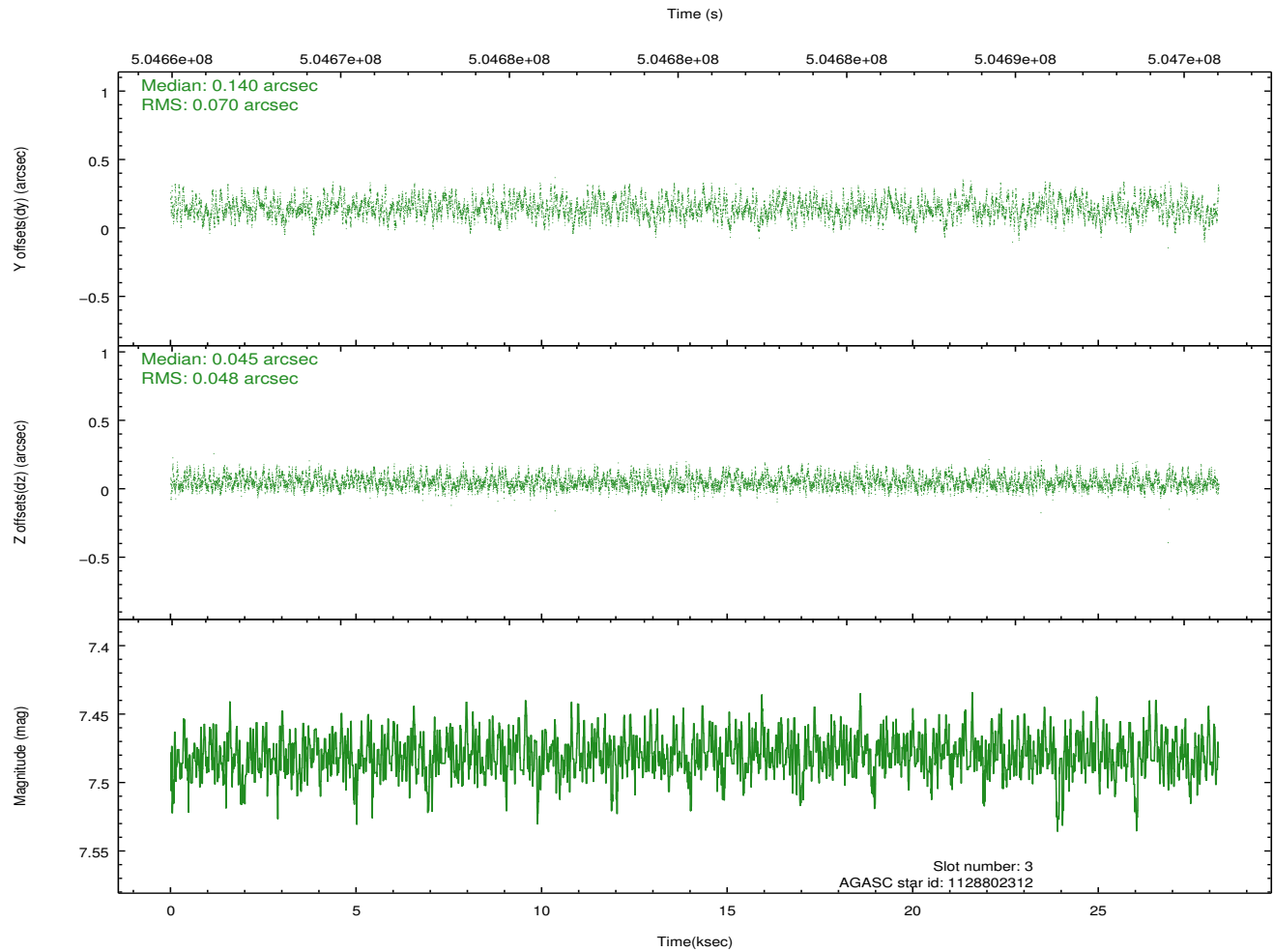
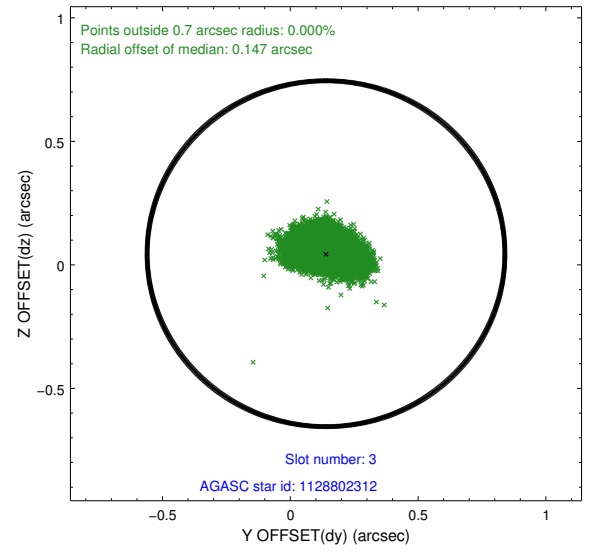
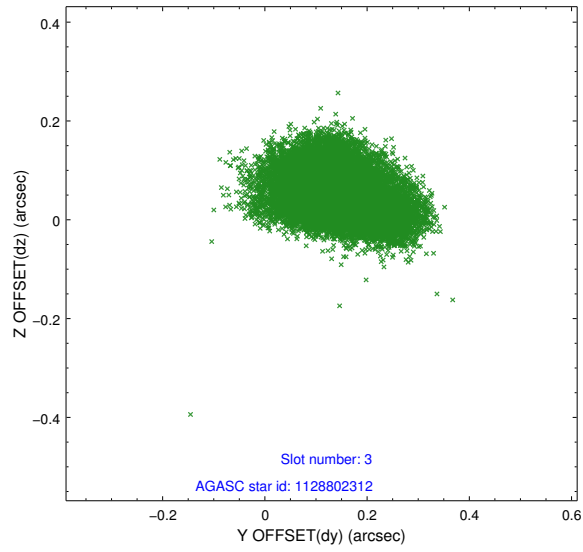


Slot Statistics

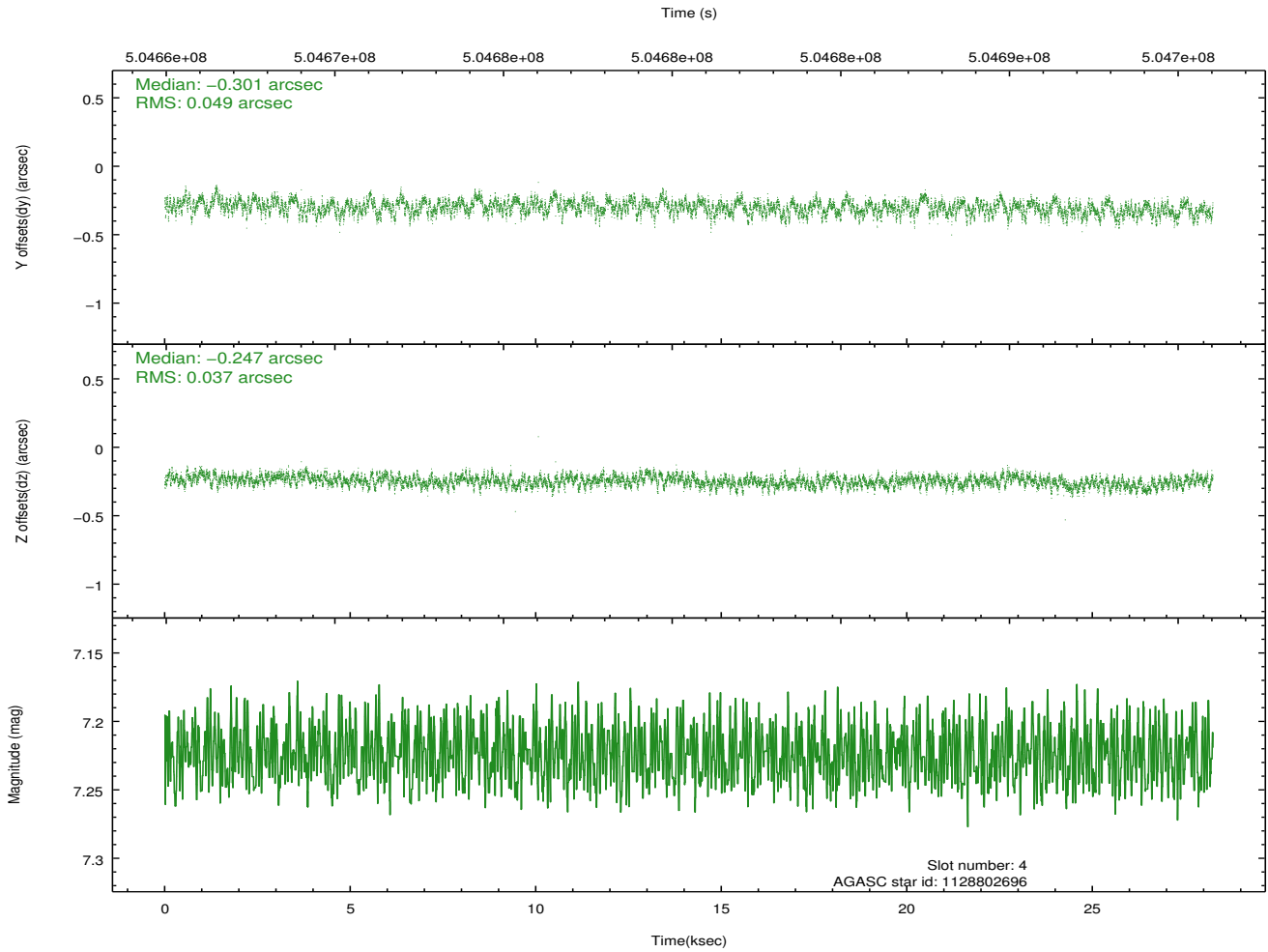
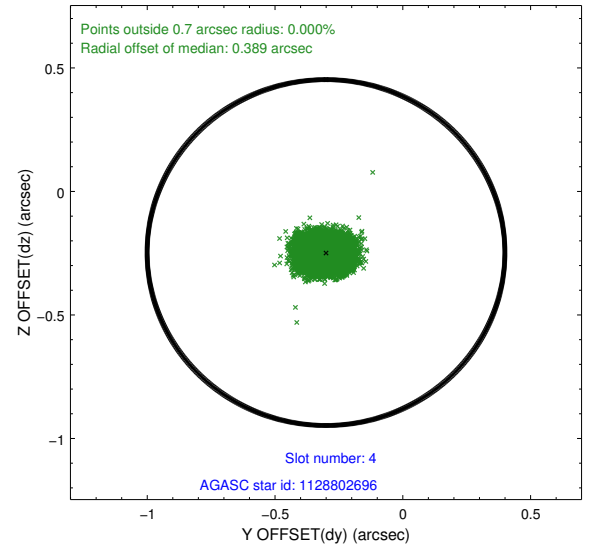
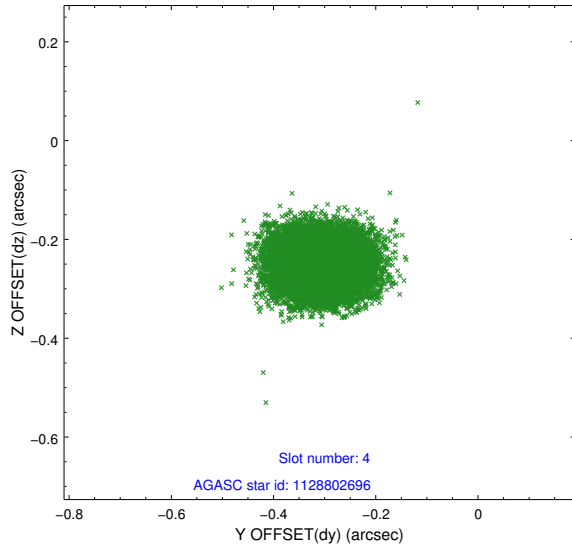
slot	status	used	id	mag	n_pts	med_dy	med_dz	dr1	dr2	ra	dec	mean_y	mean_z
0	FID		ACIS-I-1	7.10	6889	-0.074	0.026	0.019	0.044	0.000000	0.000000	919.13	-842.64
1	FID		ACIS-I-2	7.00	6889	-0.171	-0.097	0.015	0.028	0.000000	0.000000	-775.01	-849.27
2	FID		ACIS-I-4	7.03	6889	0.145	0.138	0.022	0.052	0.000000	0.000000	2139.17	1057.25
3	GUIDE	used	1128802312	7.48	13778	0.140	0.045	0.092	0.147	154.919596	-59.146092	-320.75	-662.49
4	GUIDE	used	1128802696	7.22	13778	-0.301	-0.247	0.065	0.104	155.284467	-58.483825	2011.99	175.58
5	GUIDE	used	1128803944	8.76	13775	-0.348	-0.295	0.099	0.155	154.436831	-58.433126	1224.10	1575.77
6	GUIDE	used	1128797920	7.72	13779	0.205	0.207	0.083	0.129	155.031931	-59.885084	-2358.73	-2384.35
7	GUIDE	used	1128811864	7.61	13777	0.301	0.286	0.067	0.106	155.133167	-59.636346	-1524.41	-2011.35

2.4 Star Slots

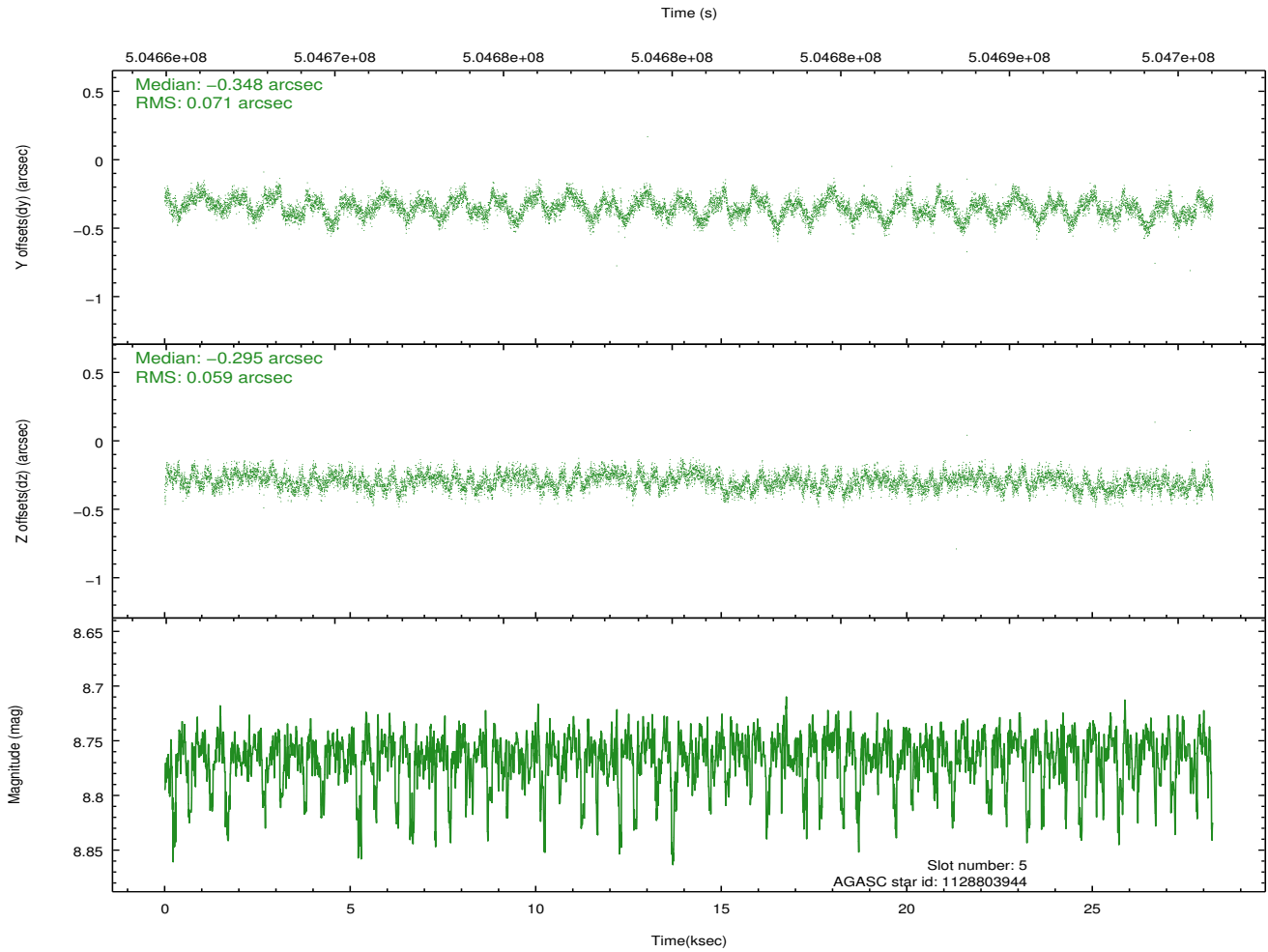
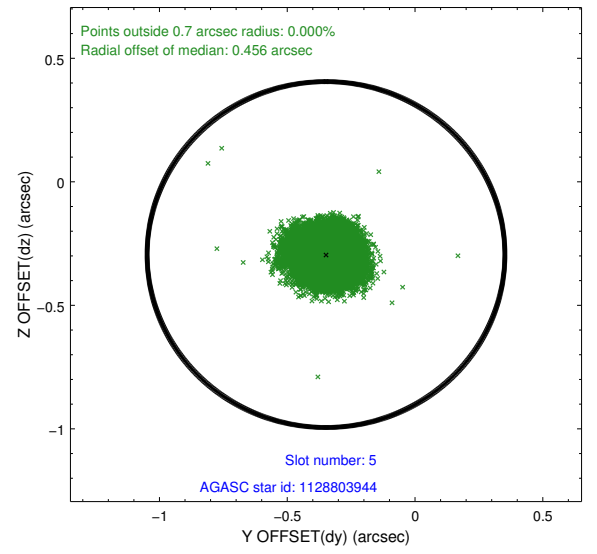
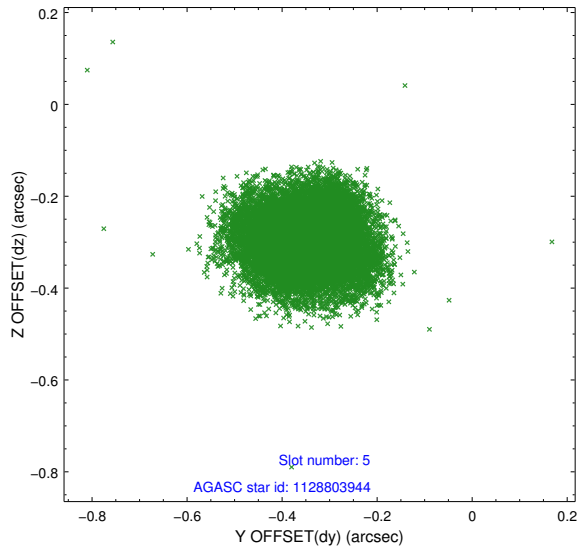
2.4.1 Slot 3



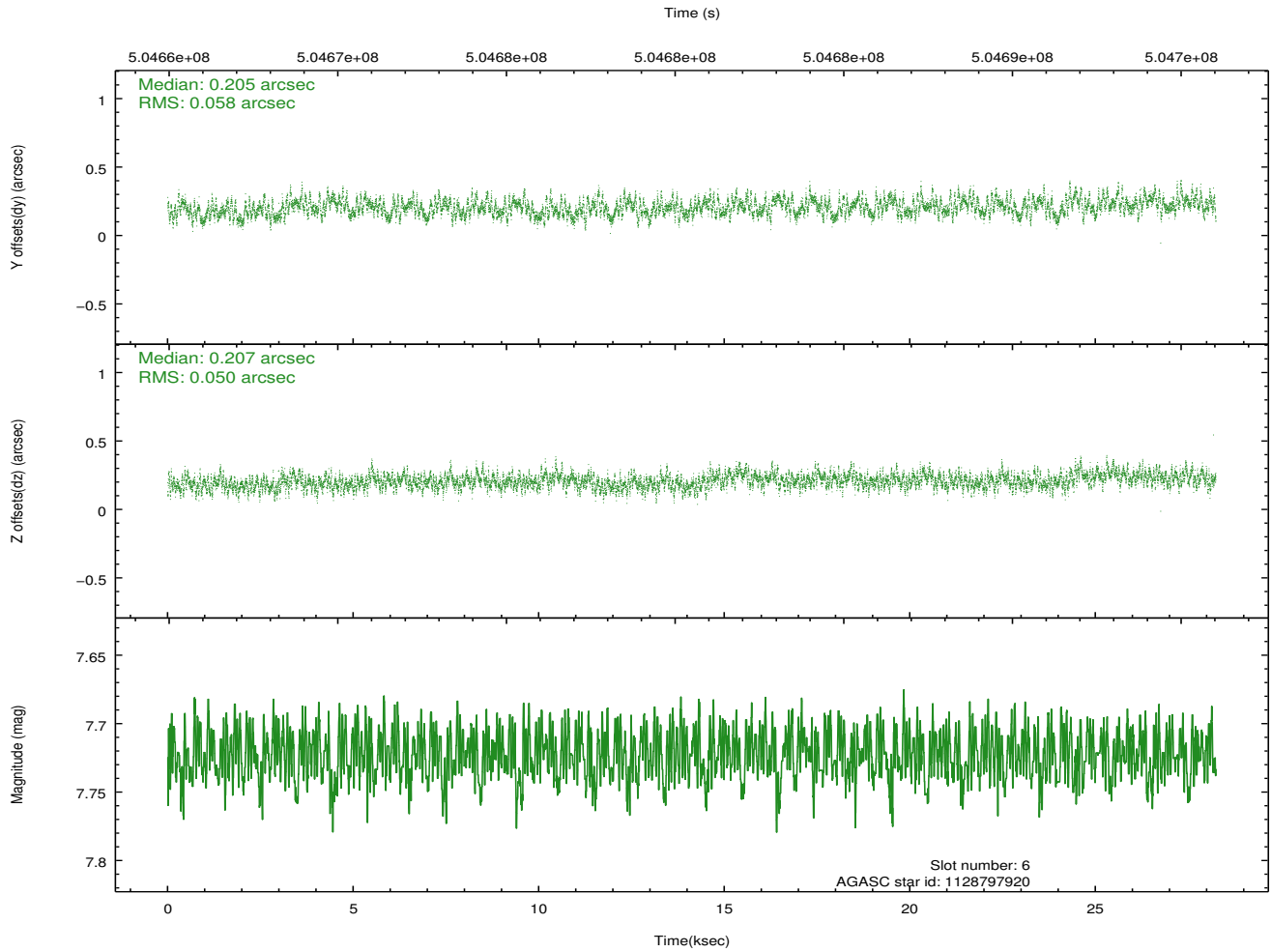
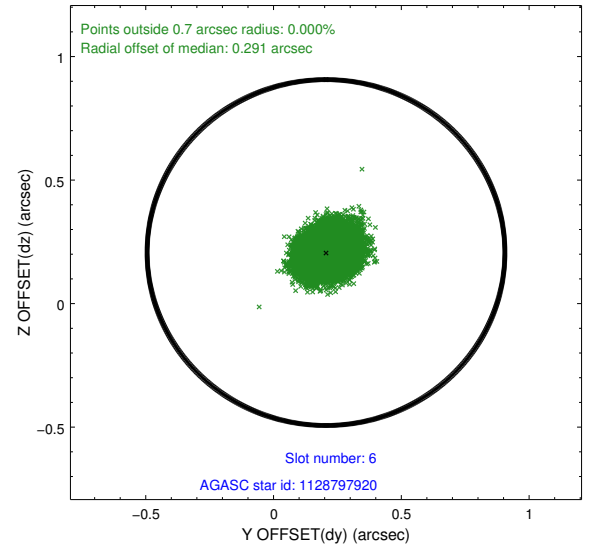
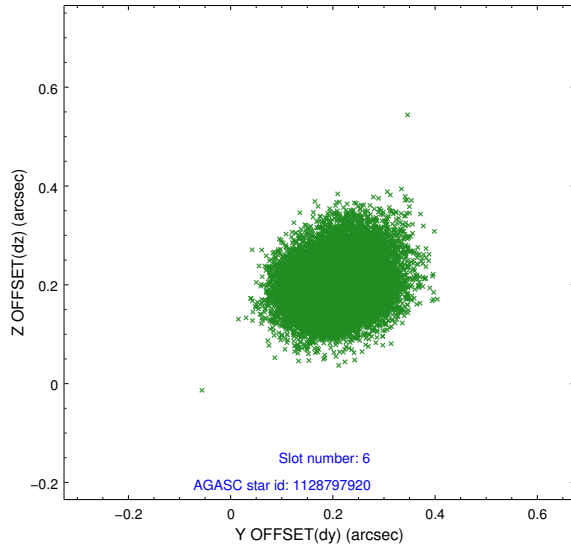
2.4.2 Slot 4



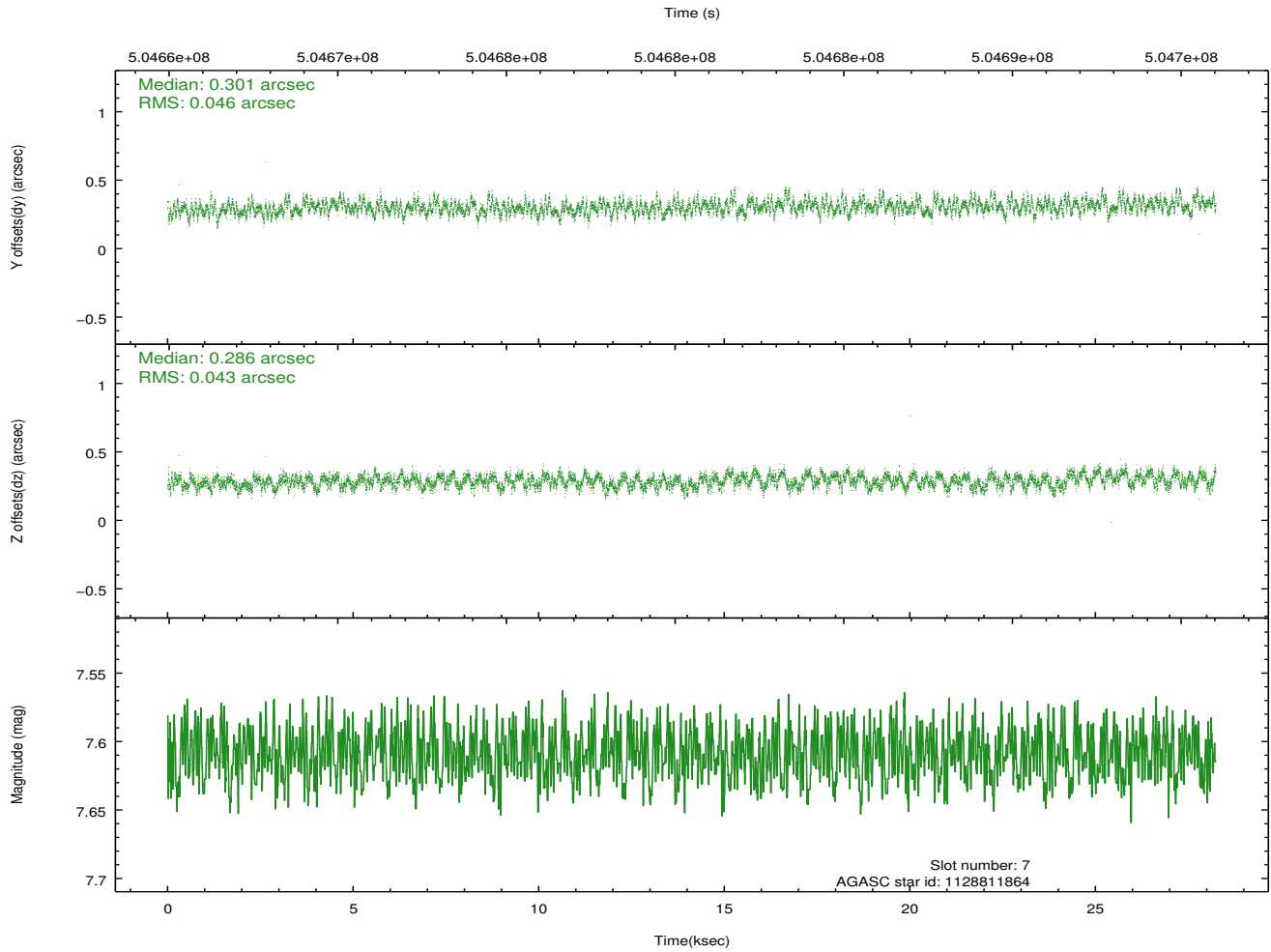
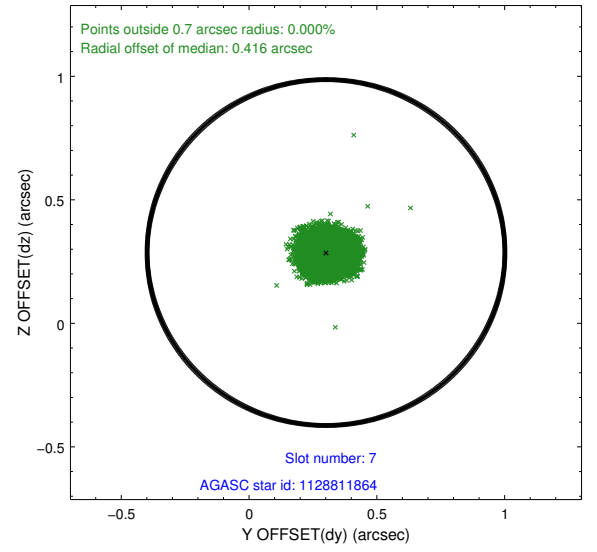
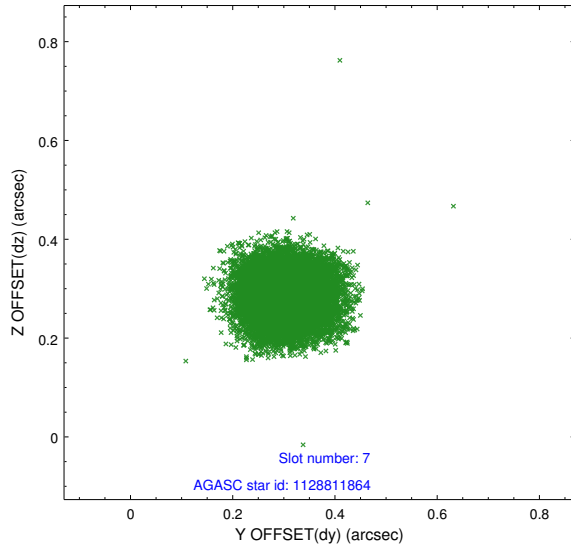
2.4.3 Slot 5



2.4.4 Slot 6

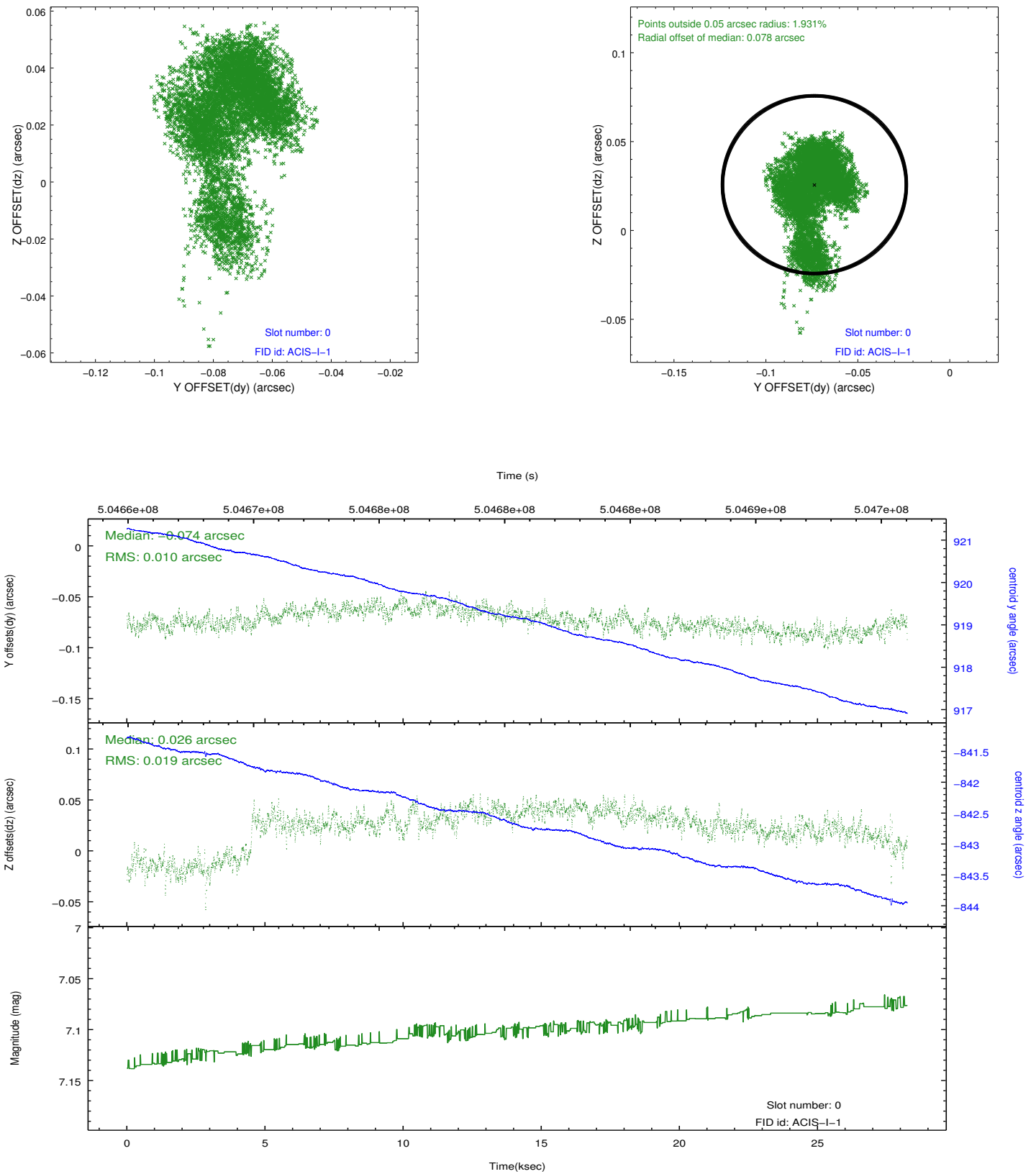


2.4.5 Slot 7

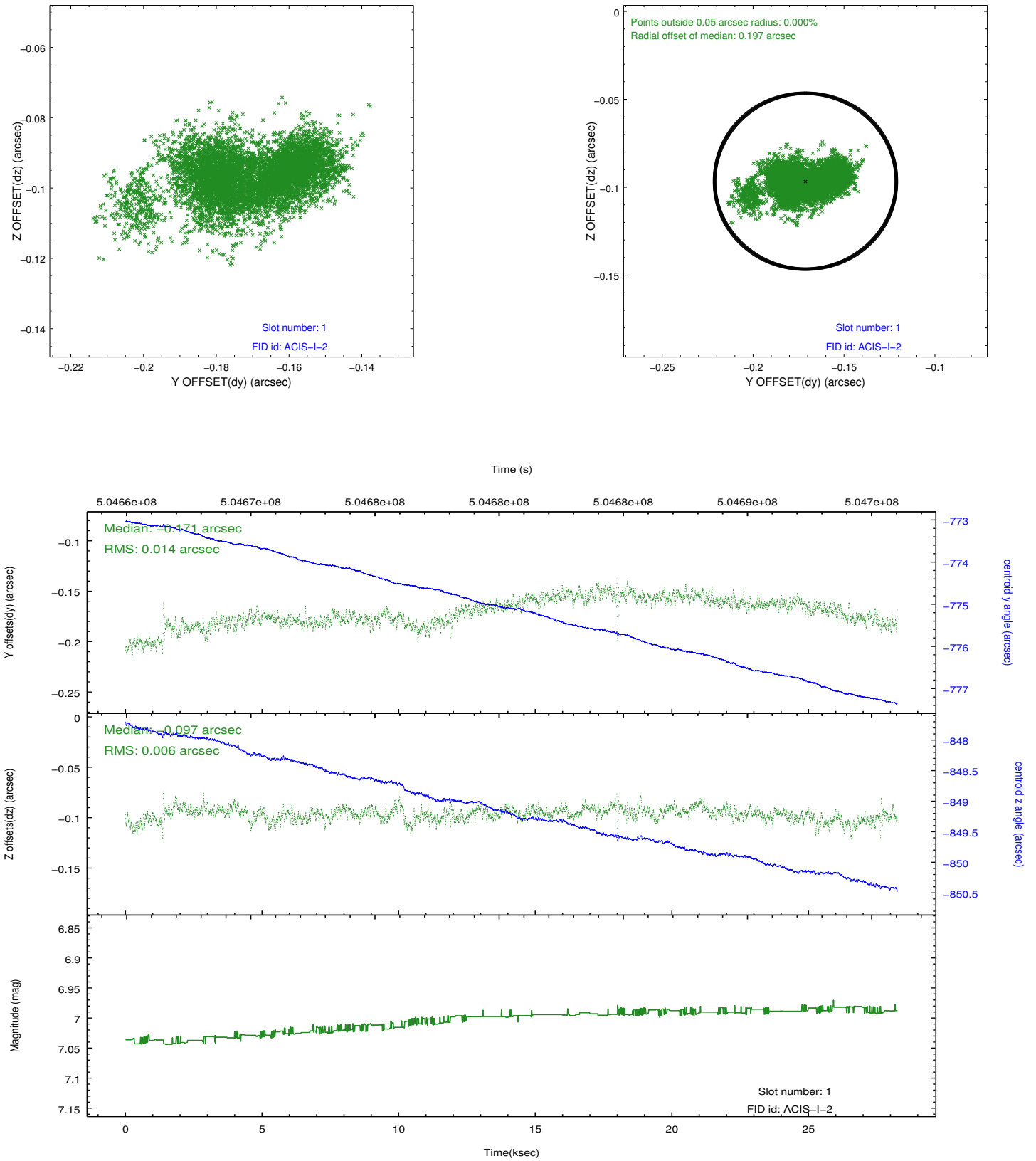


2.5 FID Slots

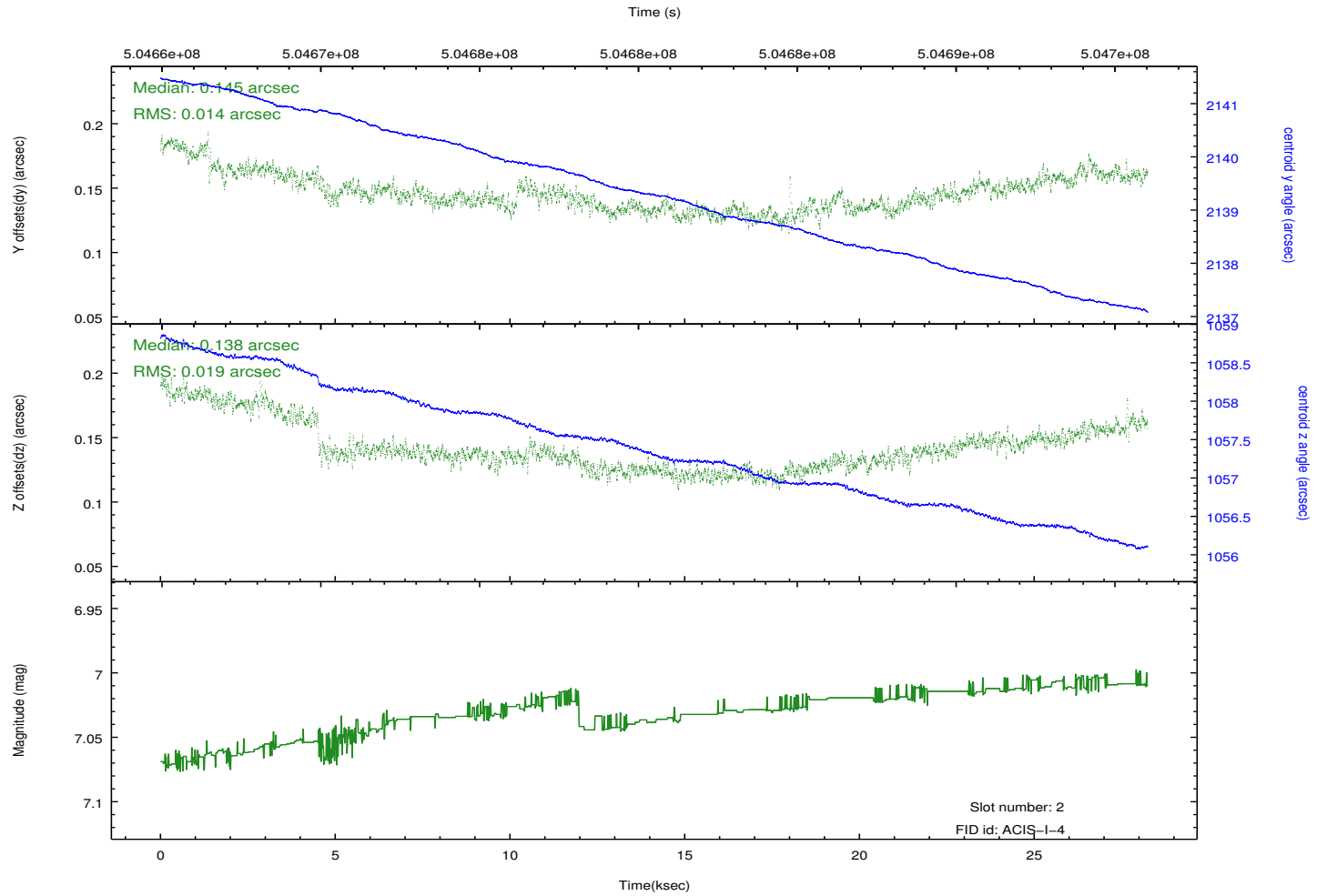
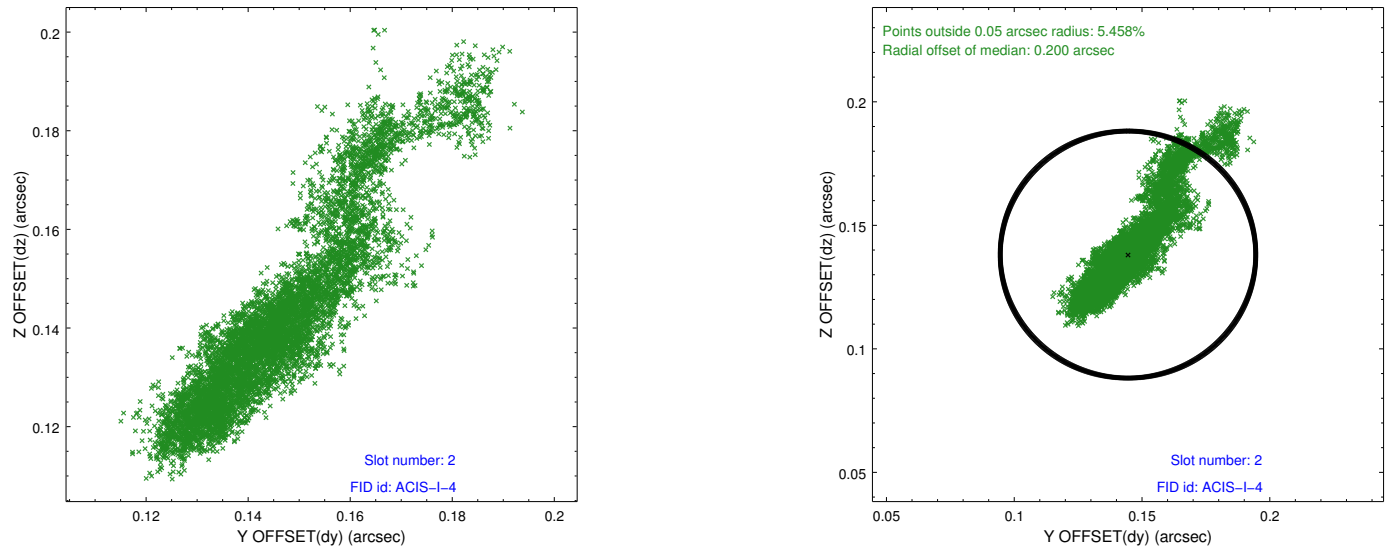
2.5.1 Slot 0



2.5.2 Slot 1



2.5.3 Slot 2



A Summary

A.1 Status

V&V Scientist	Beth Sundheim
V&V Date (YYYY-MM-DD)	2014.12.16
V&V Edition	1
V&V Disposition and Status	OK
V&V Charge Time	28.031999895632

A.2 Comments

These data have been reprocessed with new aspect alignment calibration files that correct small mean offsets (up to 0.4 arcsecs) and improve overall astrometric accuracy. The new calibration was determined using data from the time period being reprocessed and was performed using cross-correlation of X-ray sources with radio and optical counterparts.