

# V&V Reference Report

## L2 ASCDS Version : 10.2.4

Observation 16290 - L2 Version 1  
Chandra X-Ray Center

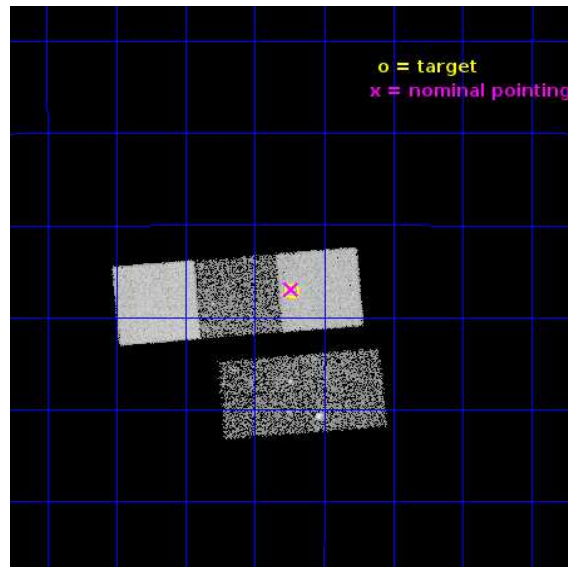
L2 Processing Date : Sep 20 2014

## Contents

<b>1</b>	<b>Front</b>	<b>2</b>
<b>2</b>	<b>OBI</b>	<b>3</b>
2.1	OBI . . . . .	3
2.1.1	Images . . . . .	3
2.1.2	Bias . . . . .	3
2.1.3	Parameters . . . . .	4
2.1.4	Events . . . . .	4
2.2	Compared Parameters . . . . .	5
2.3	Aspect . . . . .	6
2.4	Star Slots . . . . .	9
2.4.1	Slot 3 . . . . .	9
2.4.2	Slot 4 . . . . .	10
2.4.3	Slot 5 . . . . .	11
2.4.4	Slot 6 . . . . .	12
2.4.5	Slot 7 . . . . .	13
2.5	FID Slots . . . . .	14
2.5.1	Slot 0 . . . . .	14
2.5.2	Slot 1 . . . . .	15
2.5.3	Slot 2 . . . . .	16
<b>A</b>	<b>Summary</b>	<b>17</b>
A.1	Status . . . . .	17
A.2	Comments . . . . .	17

# 1 Front

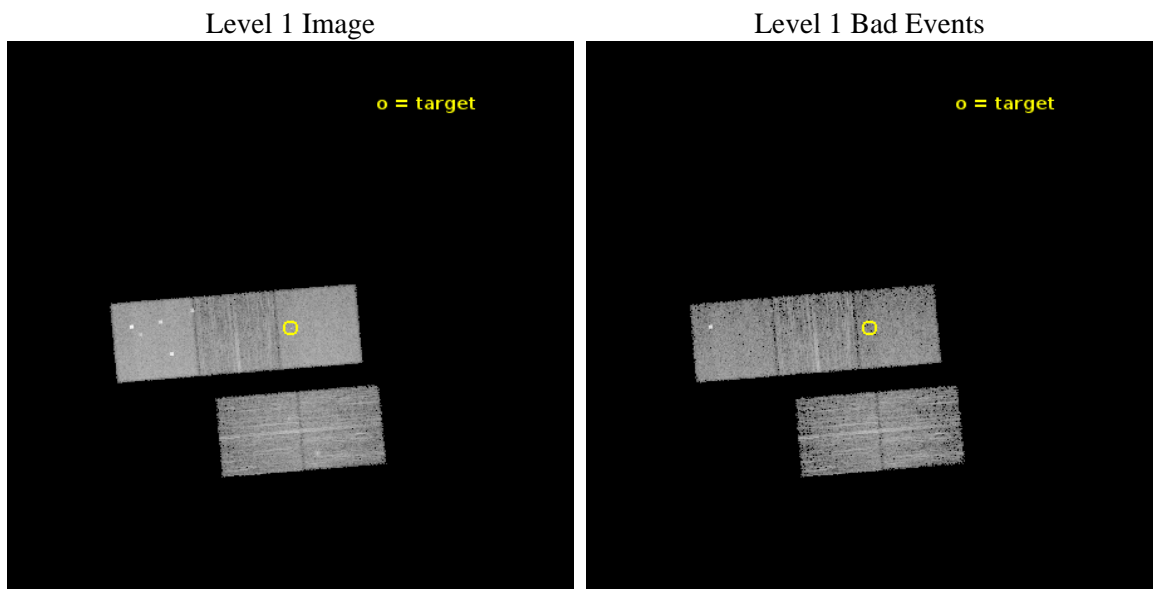
seq_num	901121	Sequence number
obs_id	16290	Observation id
title	Exploring low stellar mass galaxies in large dark matter halos	Pro
observer	Dr. Stephen Murray	Principal investigator
object	NGC7717	Source name
dtcycle	0	&#160
cycle	P	events from which exps? Prim/Second/Both
ra_targ	354.432083	Observer's specified target RA [deg]
dec_targ	-15.118472	Observer's specified target Dec [deg]
ra_nom	354.43403125636	Nominal RA [deg]
dec_nom	-15.11604717857	Nominal Dec [deg]
roll_nom	355.15719243781	Nominal Roll [deg]
revision	1	Processing version of data
ontime	9287.6000714302	Sum of GTIs [s]
livetime	9166.2507390653	Livetime [s]
ontime2	9287.6000714302	Sum of GTIs [s]
ontime3	9287.6000714302	Sum of GTIs [s]
ontime5	9287.6000714302	Sum of GTIs [s]
ontime6	9287.6000714302	Sum of GTIs [s]
ontime7	9287.6000714302	Sum of GTIs [s]
l2events	77475	Number of level 2 events



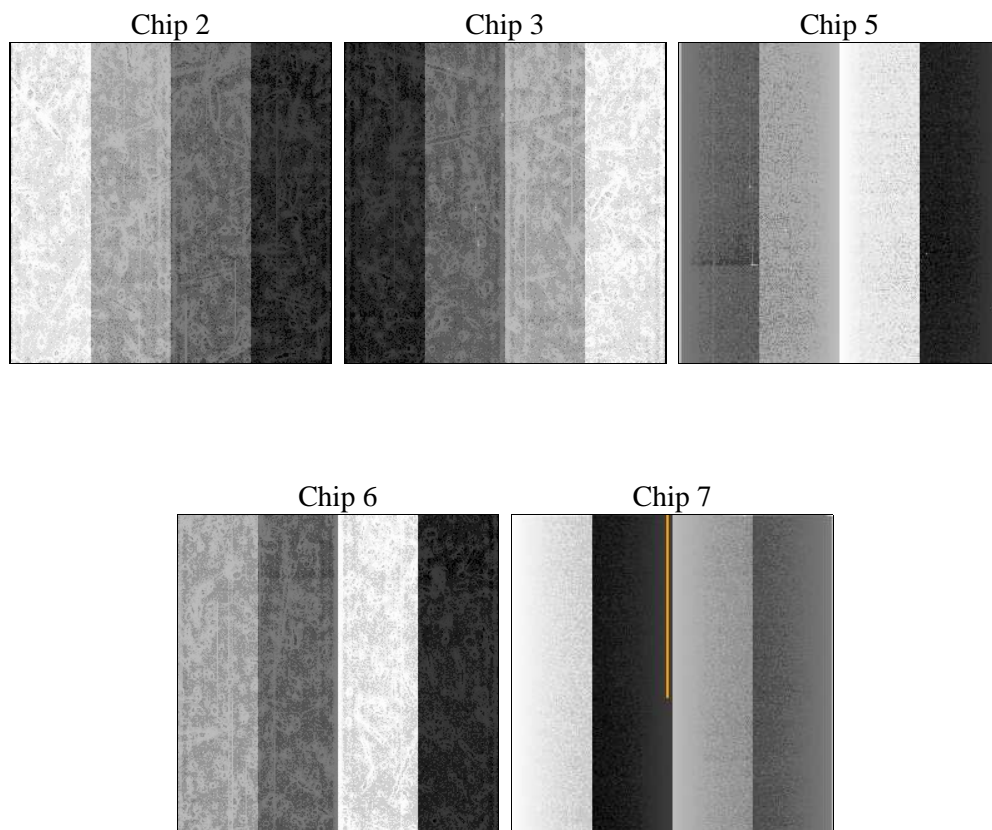
## 2 OBI

### 2.1 OBI

#### 2.1.1 Images



#### 2.1.2 Bias



### 2.1.3 Parameters

obi_num	0	Obi number	sched_exp_time	9222.301000	[s] Scheduled observation exposure time
ascdsver	10.2.4	Processing system revision	ontime	9287.6000714302	Sum of GTIs [s]
caldsver	4.6.3	&#160	ontime2	9287.6000714302	Sum of GTIs [s]
date	2014-09-20T13:46:06	Date and time of file creation	ontime3	9287.6000714302	Sum of GTIs [s]
revision	1	Processing version of data	ontime5	9287.6000714302	Sum of GTIs [s]
			ontime6	9287.6000714302	Sum of GTIs [s]
			ontime7	9287.6000714302	Sum of GTIs [s]
			l1events	283616	Number of level 1 events

### 2.1.4 Events

	ccd 2	ccd 3	ccd 5	ccd 6	ccd 7
level 1 events	44190	44648	83876	46928	63974
rejected events	38879	39149	42156	41213	35805
rejected %	87%	87%	50%	87%	55%

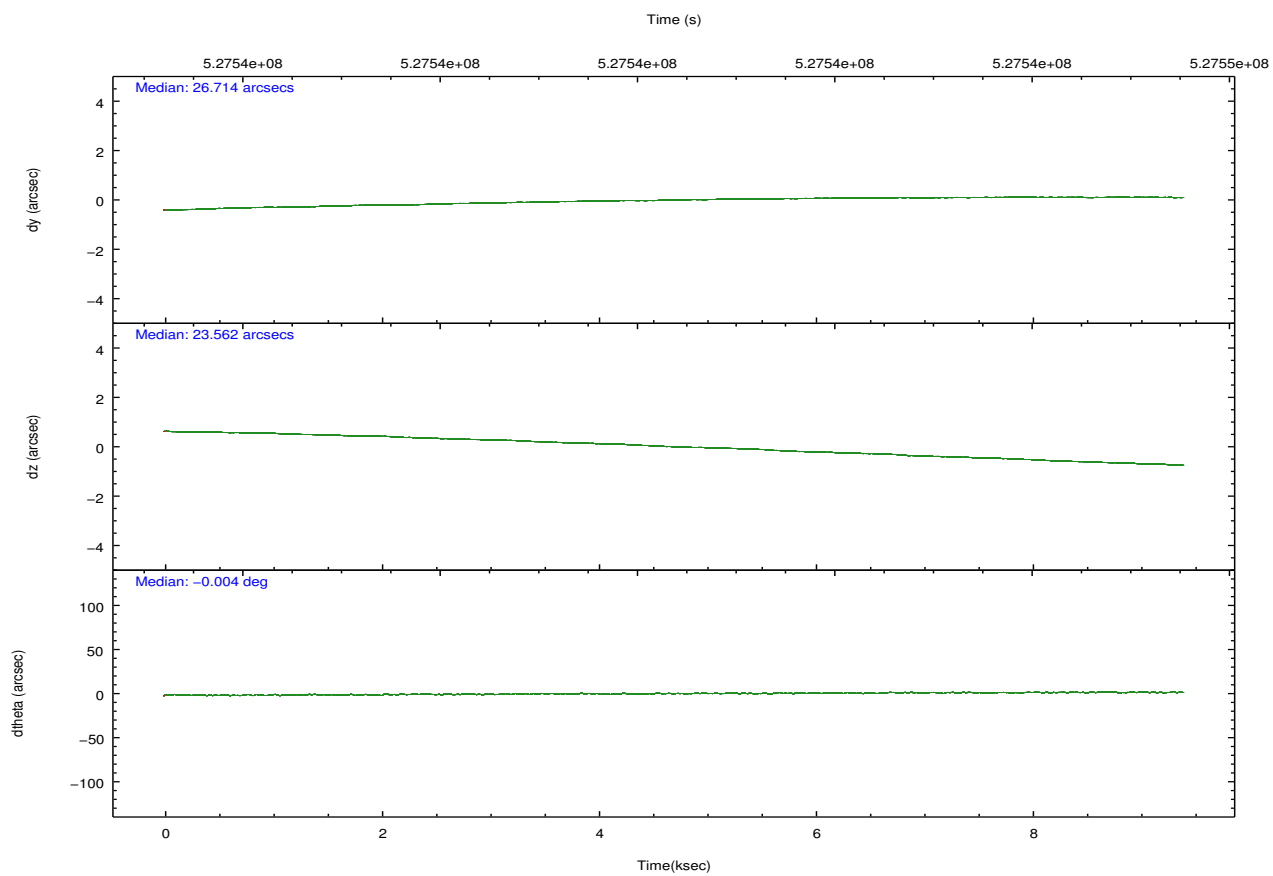
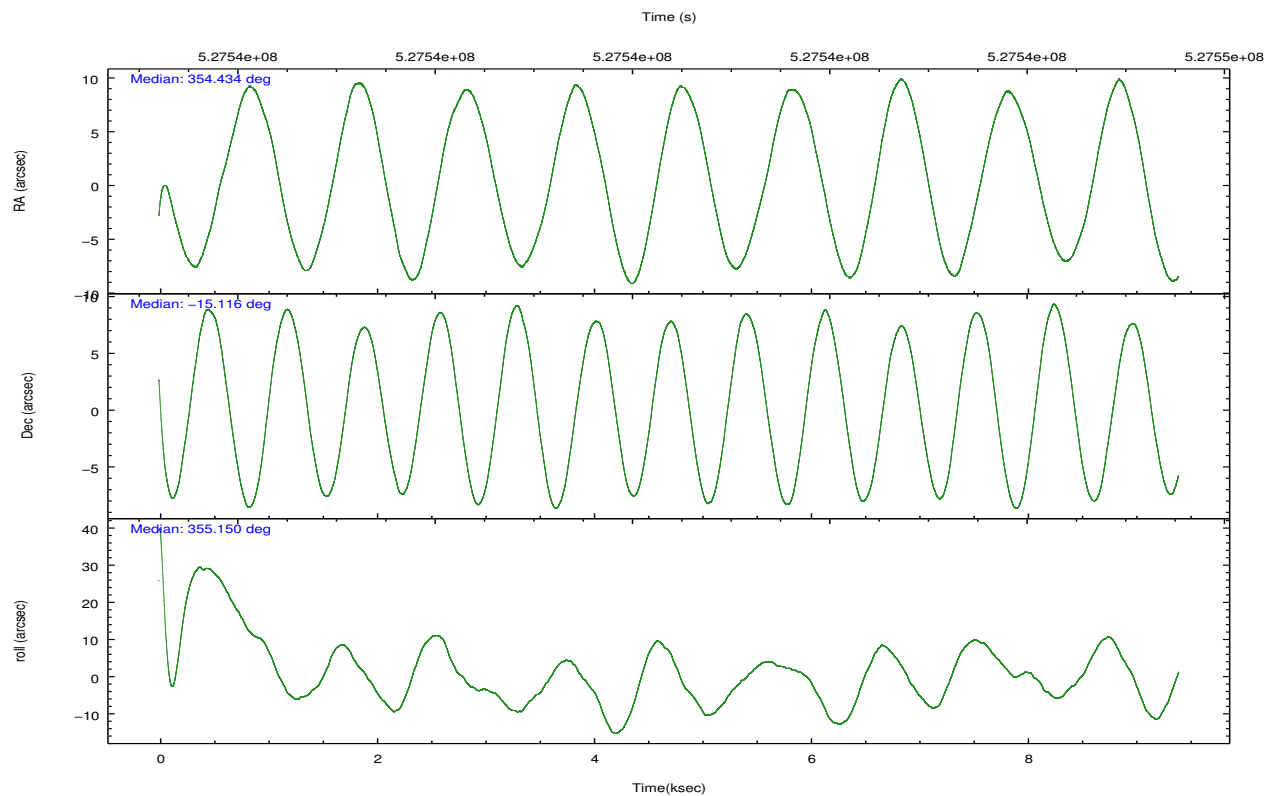
	ccd 2	ccd 3	ccd 5	ccd 6	ccd 7
grade 0 events	1952	2122	6246	1921	2524
	4%	4%	7%	4%	3%
grade 1 events	26	20	217	24	84
	0%	0%	0%	0%	0%
grade 2 events	1228	1209	12642	1356	5631
	2%	2%	15%	2%	8%
grade 3 events	554	541	1439	576	2425
	1%	1%	1%	1%	3%
grade 4 events	513	560	1277	556	2320
	1%	1%	1%	1%	3%
grade 5 events	2015	2489	5967	2454	6503
	4%	5%	7%	5%	10%
grade 6 events	1065	1071	20158	1308	15297
	2%	2%	24%	2%	23%
grade 7 events	36837	36636	35930	38733	29190
	83%	82%	42%	82%	45%



## 2.2 Compared Parameters

Parameter	Planned	Actual	Parameter	Planned	Actual
Instrument	ACIS	ACIS	Obspar format version number	7	7
Detector	ACIS-23567	ACIS-23567	Obspar file type	PREDICTED	ACTUAL
Grating	NONE	NONE	Obspar update status	NONE	UPDATED
Data mode	VFAINT	VFAINT	Number of optional ACIS chips dropped	0	0
Observation mode	POINTING	POINTING	On-chip summing requested	N	N
[deg] Pointing RA	354.408513	354.4340312563568	Subarray requested	NONE	NONE
[deg] Pointing Dec	-15.128024	-15.11604717856967	Alternating exposures requested	N	N
[deg] Pointing Roll	354.993846	355.1571924378067	[s] Primary exposure time	0.000000	3.1
[mm] SIM focus pos	-0.684267	-0.6828225247311905			
[mm] SIM defocus	0	0.001444936568705701			
[mm] SIM translation stage pos	-190.132523	-190.1400660498719			
[mm] SIM translation stage offset	0	0.00754346686406393			
[s] Observation start time (MET)	527535842.184000	527534591.48044			
Observation start date	2014-09-19T17:42:55	2014-09-19T17:23:11			
[s] Observation end time (MET)	527545065.184000	527545290.94353			
Observation end date	2014-09-19T20:16:38	2014-09-19T20:21:30			
Read mode	TIMED	TIMED			

## 2.3 Aspect

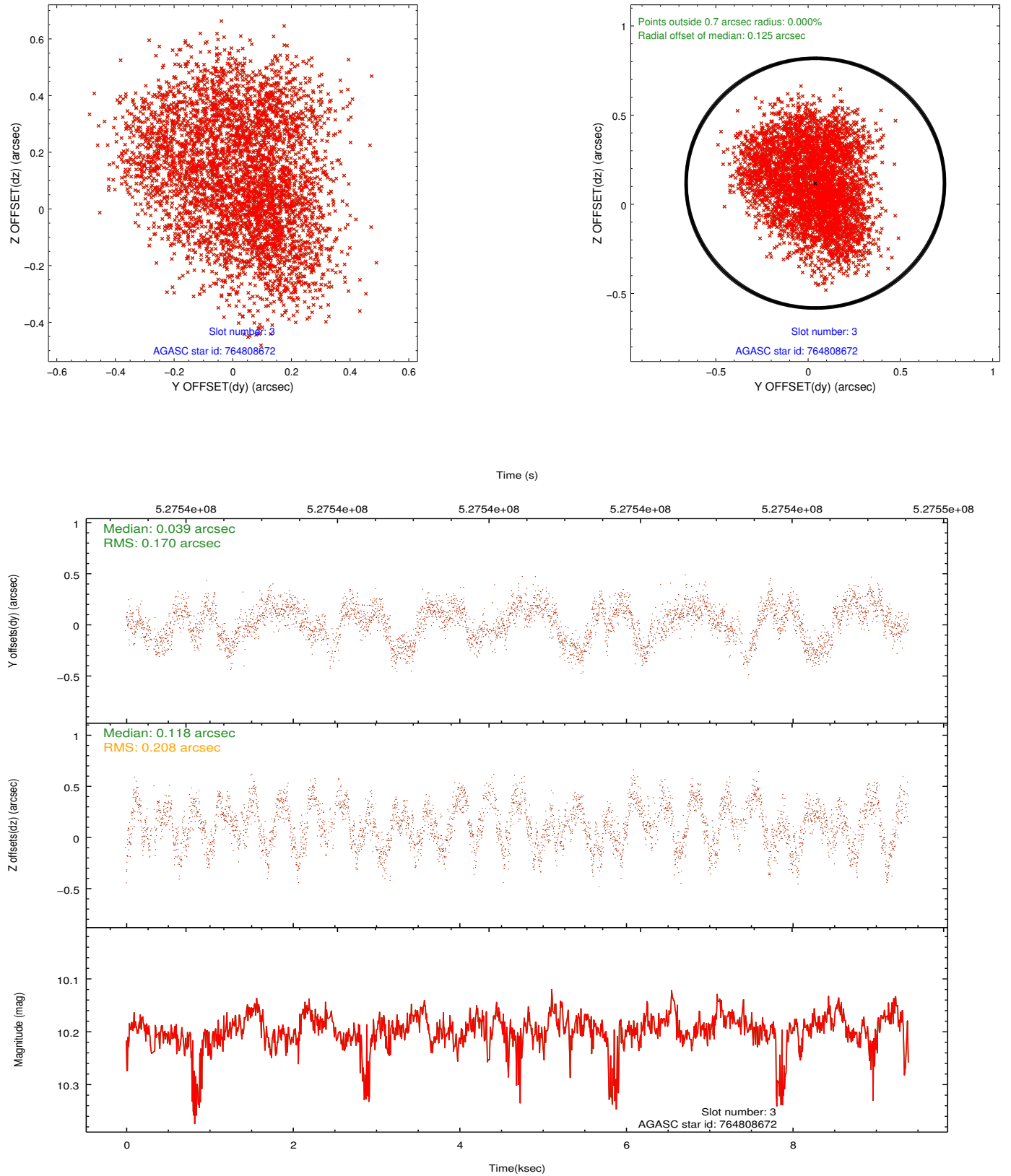


### Slot Statistics

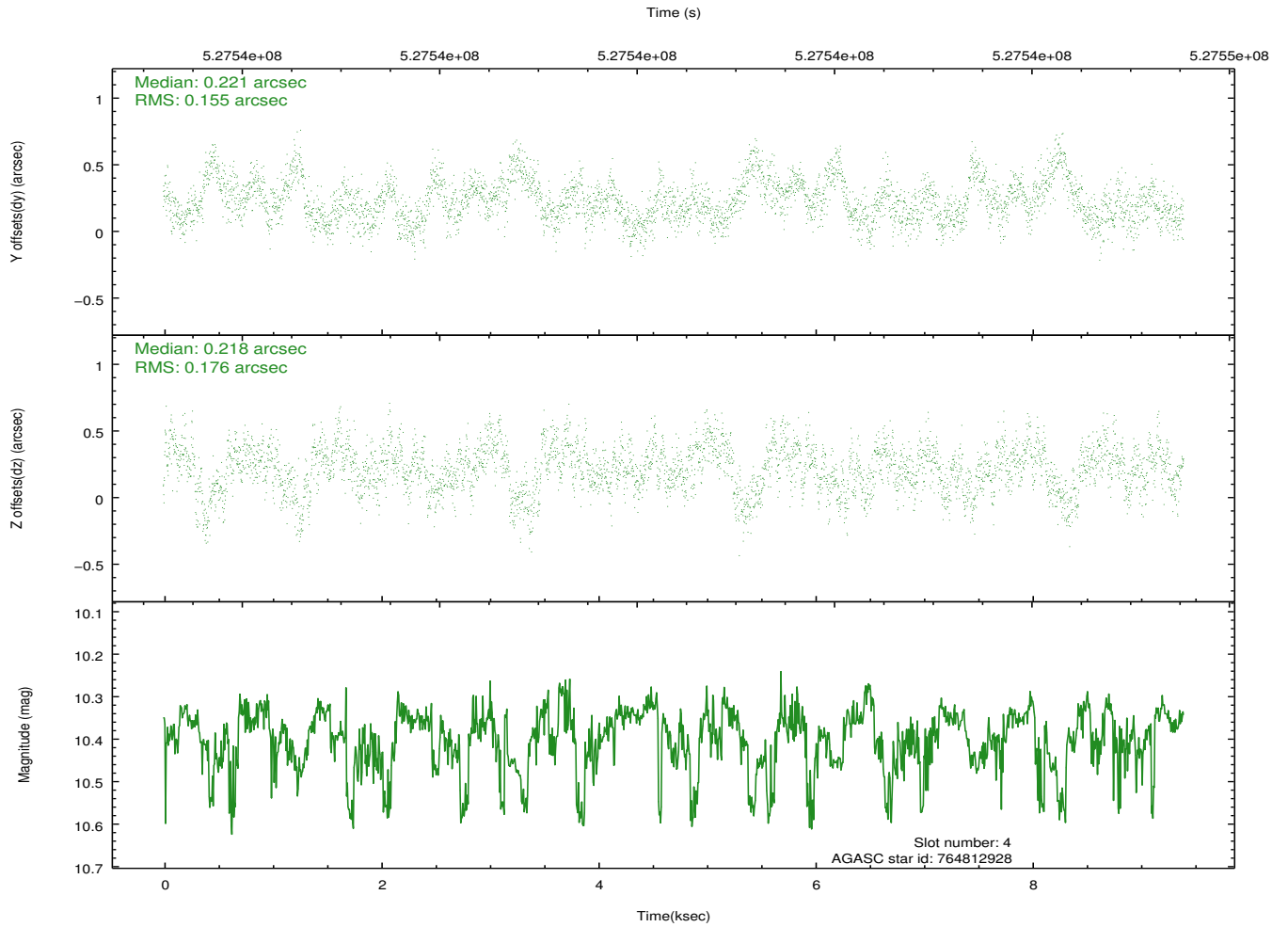
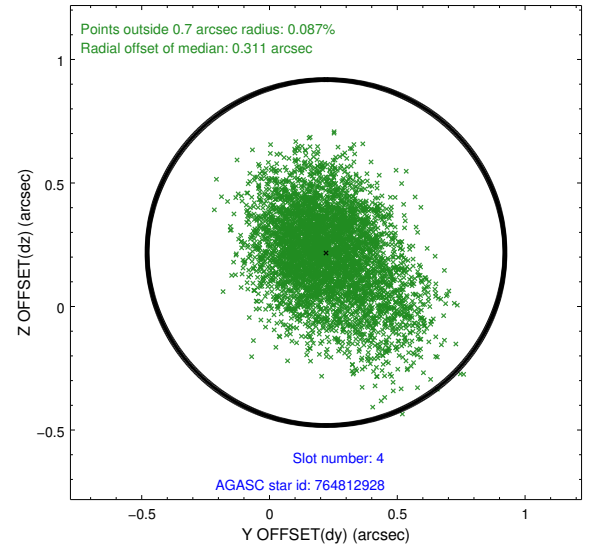
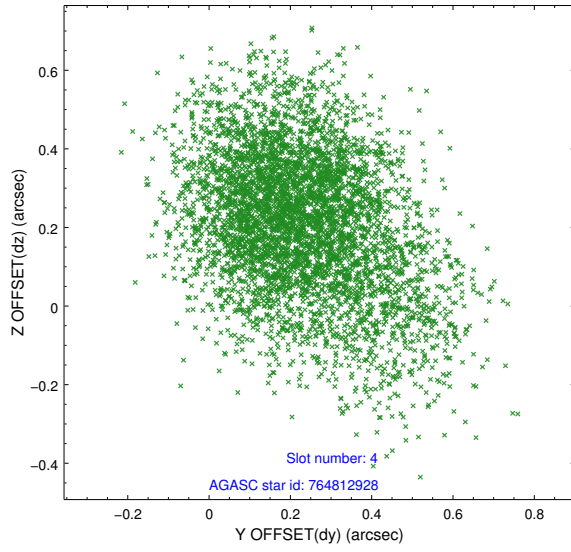
slot	status	id	mag	n_pts	med_dy	med_dz	dr1	dr2	ra	dec	mean_y	mean_z
0	FID	ACIS-S-2	6.94	2294	-0.168	-0.032	0.016	0.026	0.000000	0.000000	-780.11	-1745.19
1	FID	ACIS-S-4	7.03	2294	0.329	0.089	0.005	0.010	0.000000	0.000000	2133.39	162.81
2	FID	ACIS-S-5	7.07	2293	-0.193	-0.049	0.017	0.026	0.000000	0.000000	-1832.25	157.00
3	BAD	764808672	10.20	4346	0.039	0.118	0.299	0.437	354.432250	-14.727417	-42.96	1443.97
4	GUIDE	764812928	10.39	4577	0.221	0.218	0.246	0.418	354.156121	-14.708962	-1006.19	1426.33
5	GUIDE	764813040	8.96	4584	-0.254	-0.115	0.135	0.221	354.591917	-14.609323	473.46	1915.88
6	GUIDE	839254552	6.25	4587	-0.015	-0.309	0.121	0.181	354.512622	-15.095109	351.95	148.23
7	GUIDE	839389360	7.92	4586	0.012	0.100	0.094	0.143	355.057799	-15.421218	2337.62	-858.13

## 2.4 Star Slots

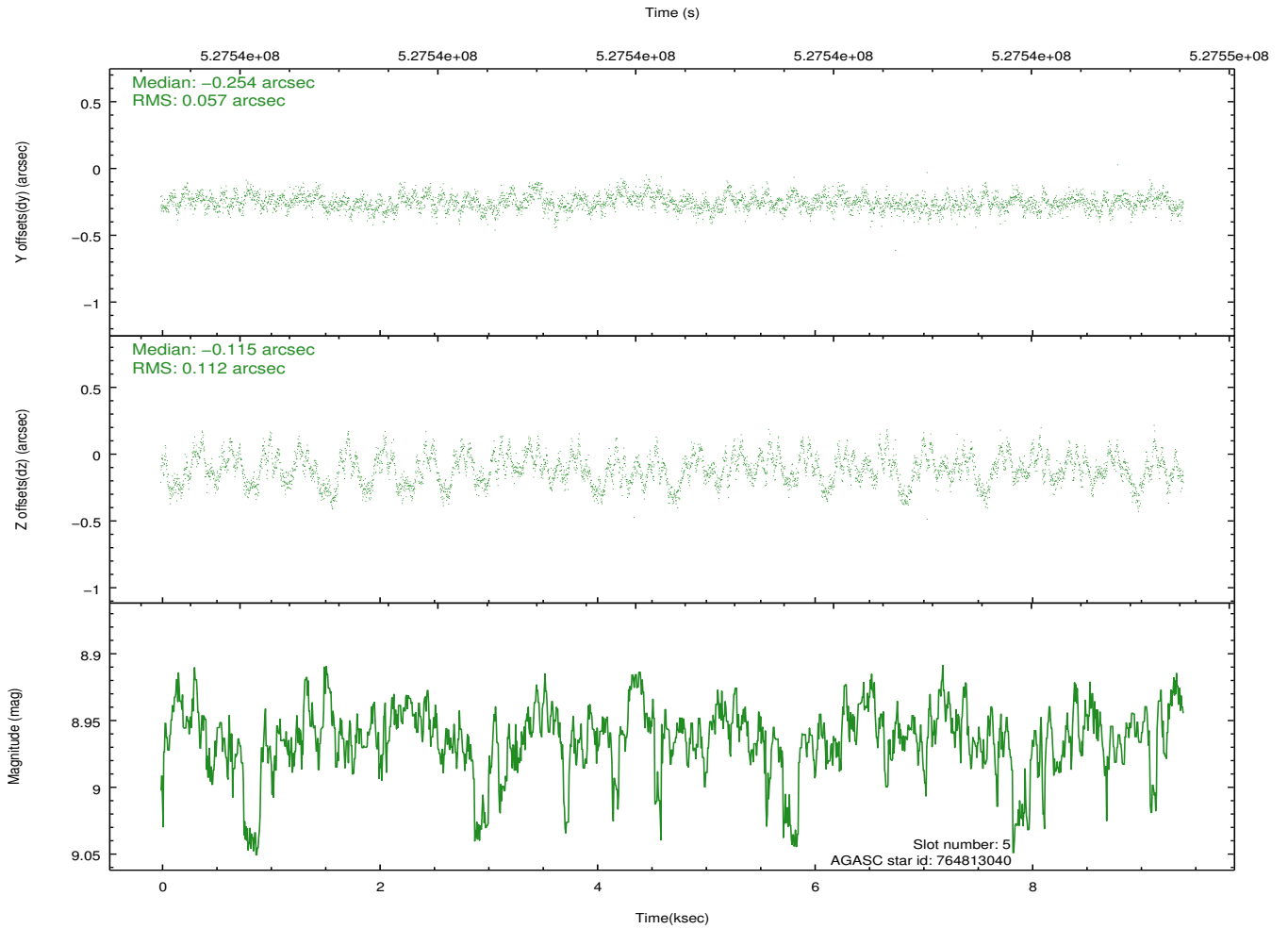
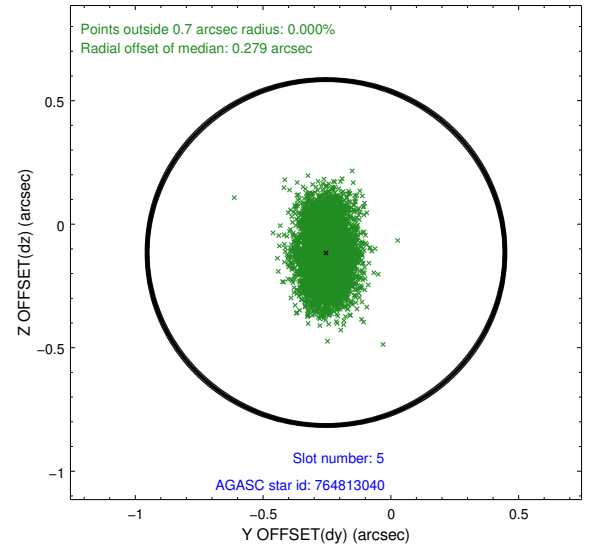
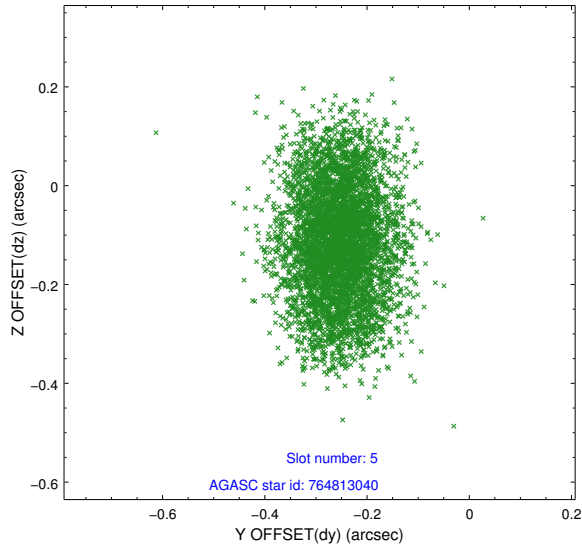
### 2.4.1 Slot 3



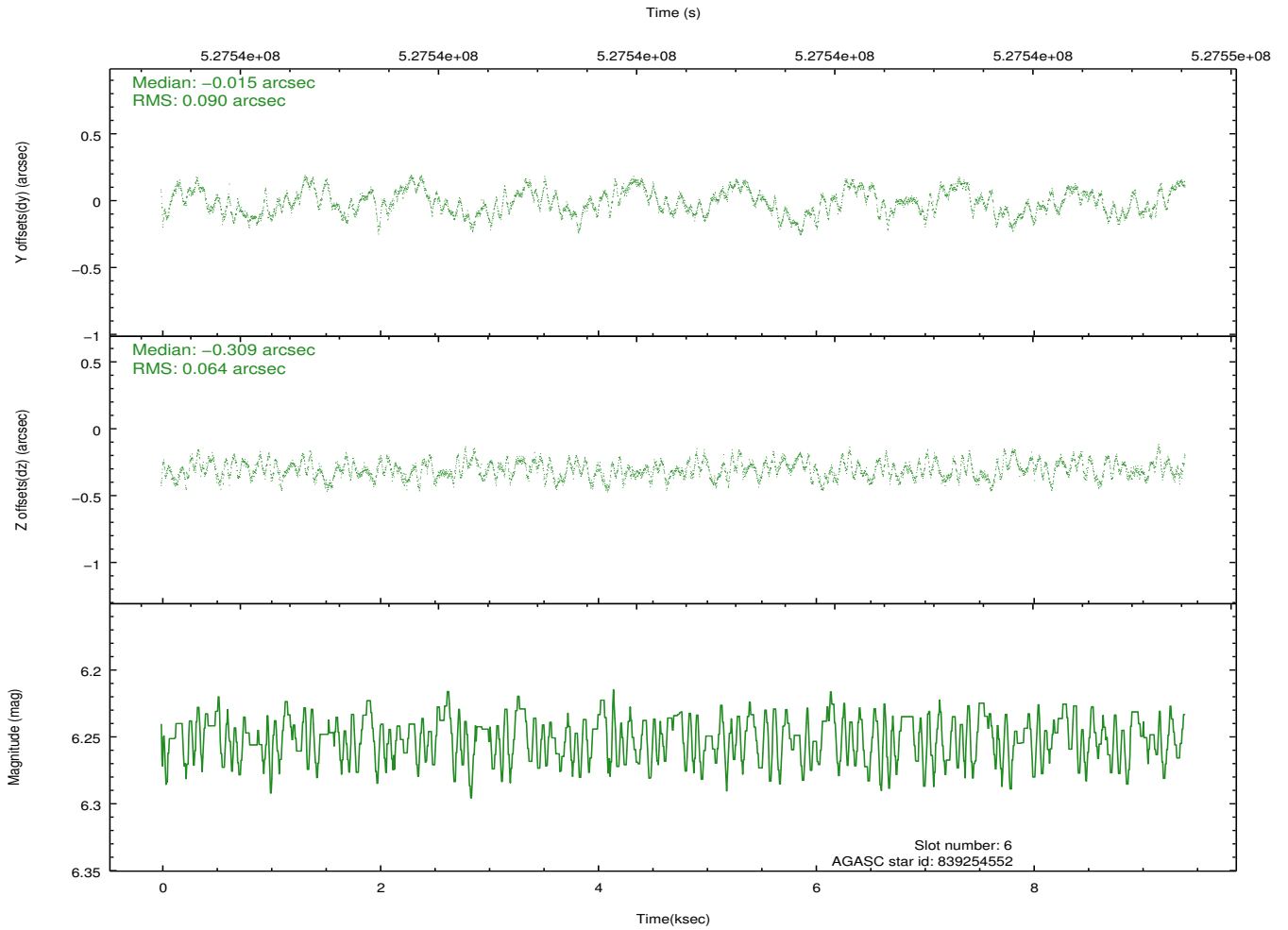
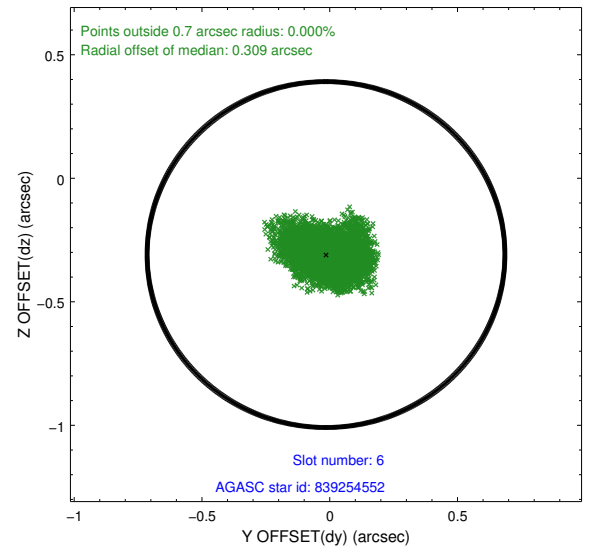
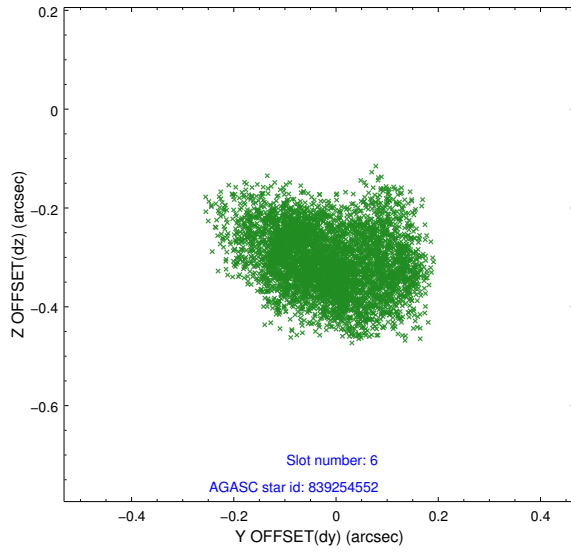
## 2.4.2 Slot 4



### 2.4.3 Slot 5

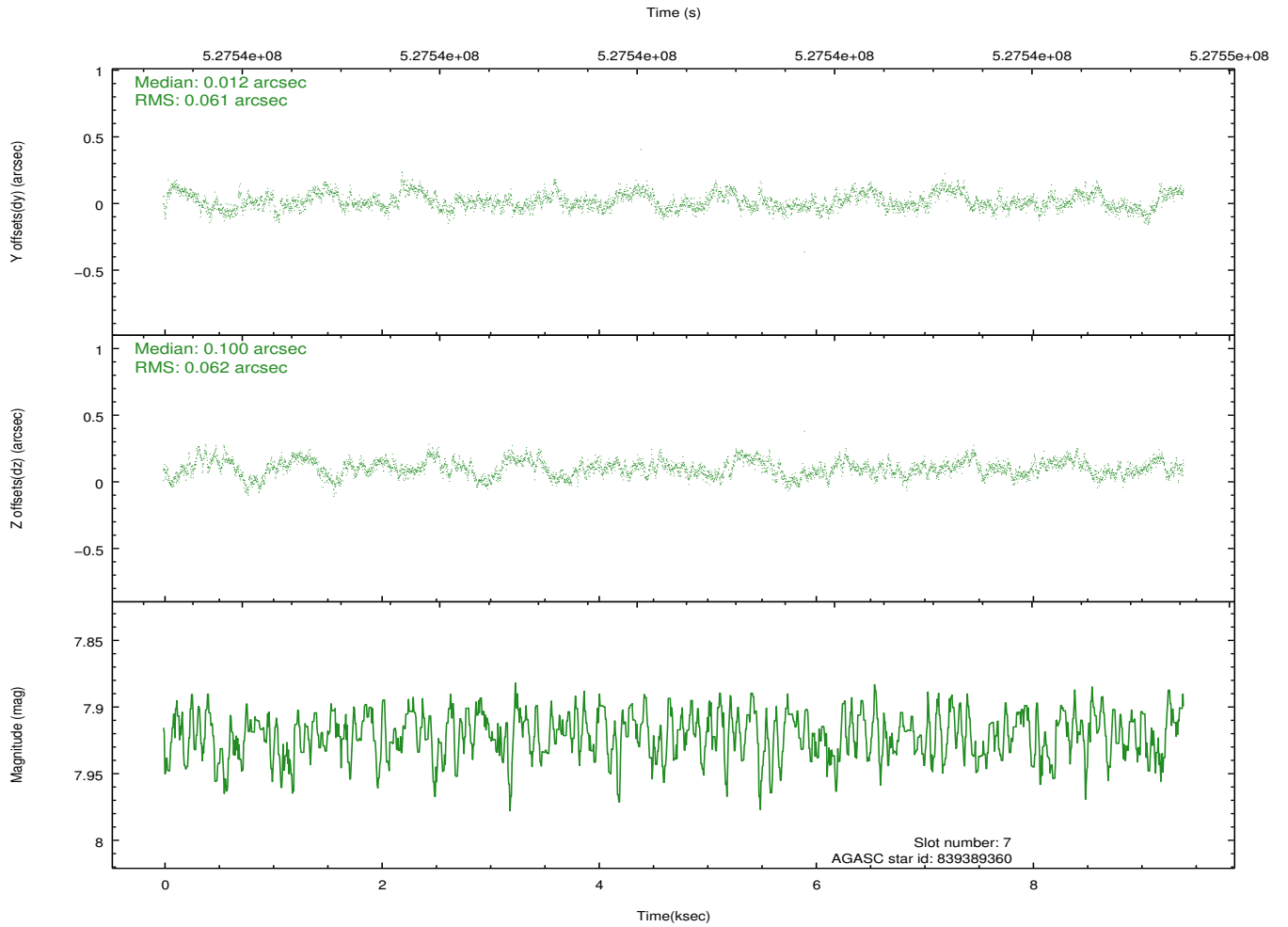
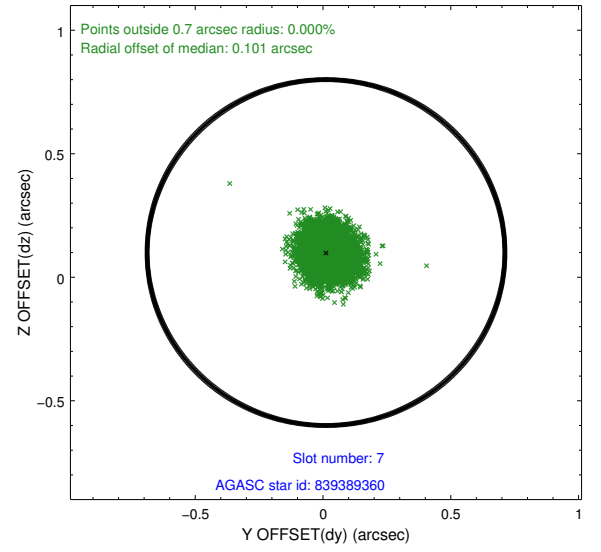
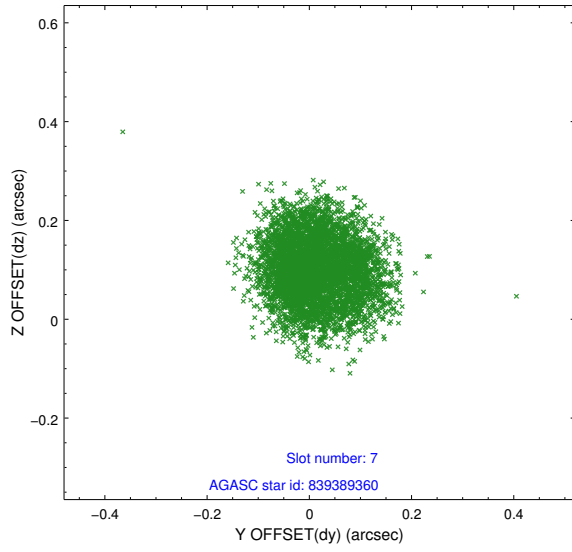


## 2.4.4 Slot 6



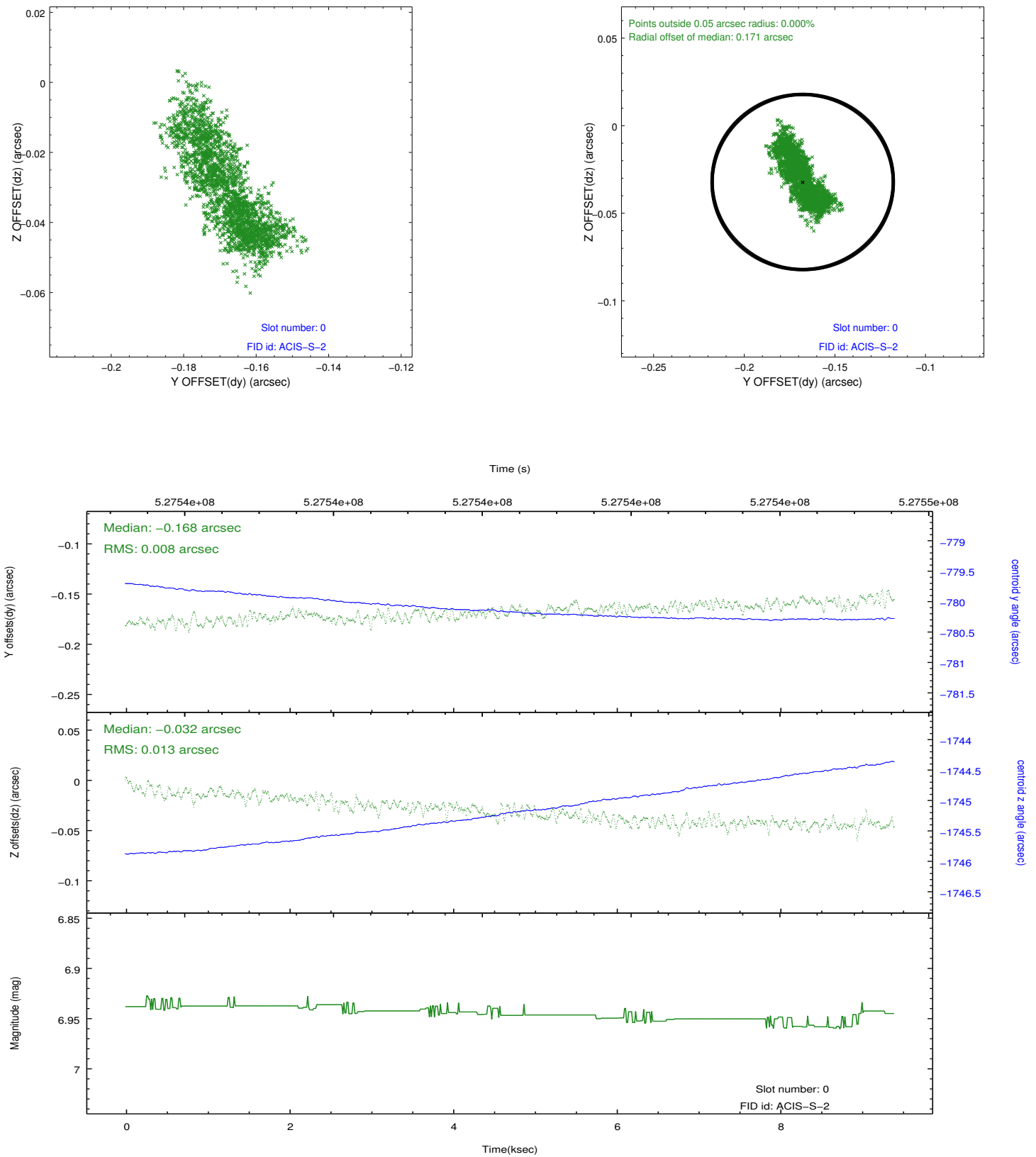


## 2.4.5 Slot 7

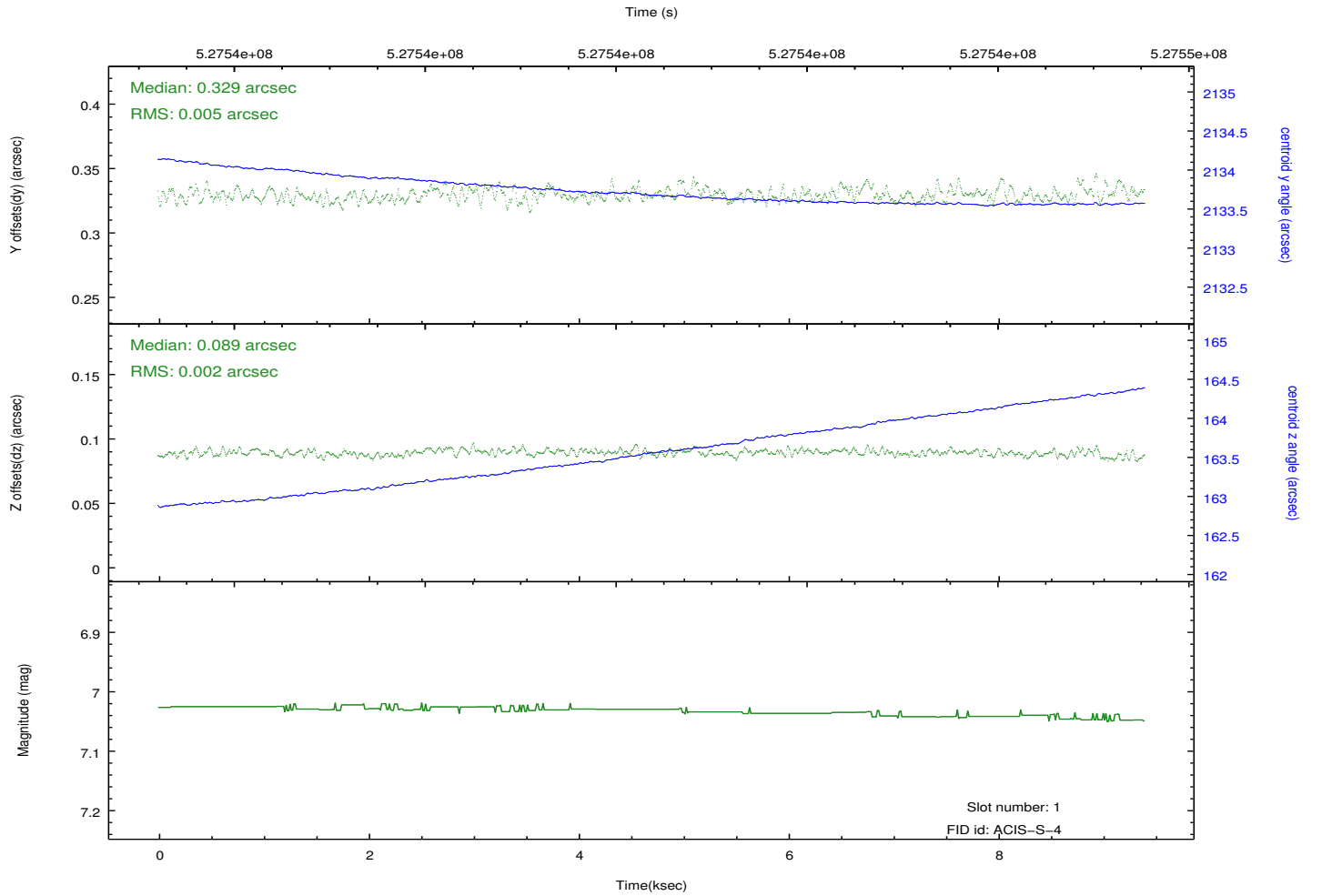
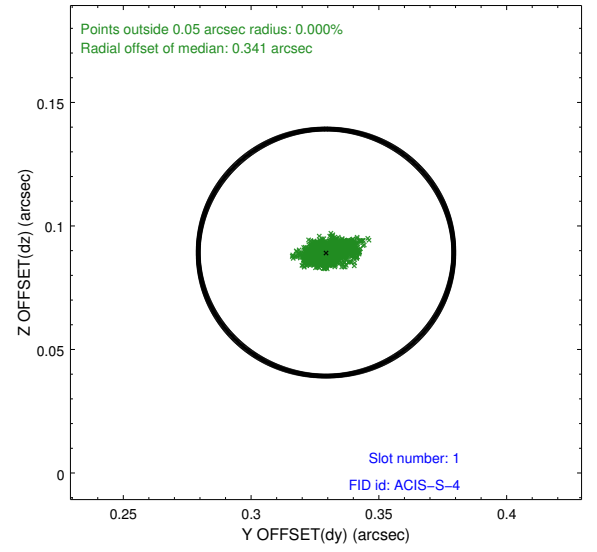
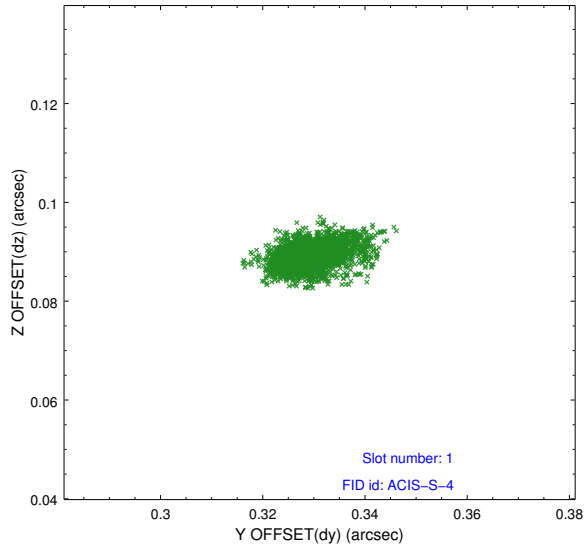


## 2.5 FID Slots

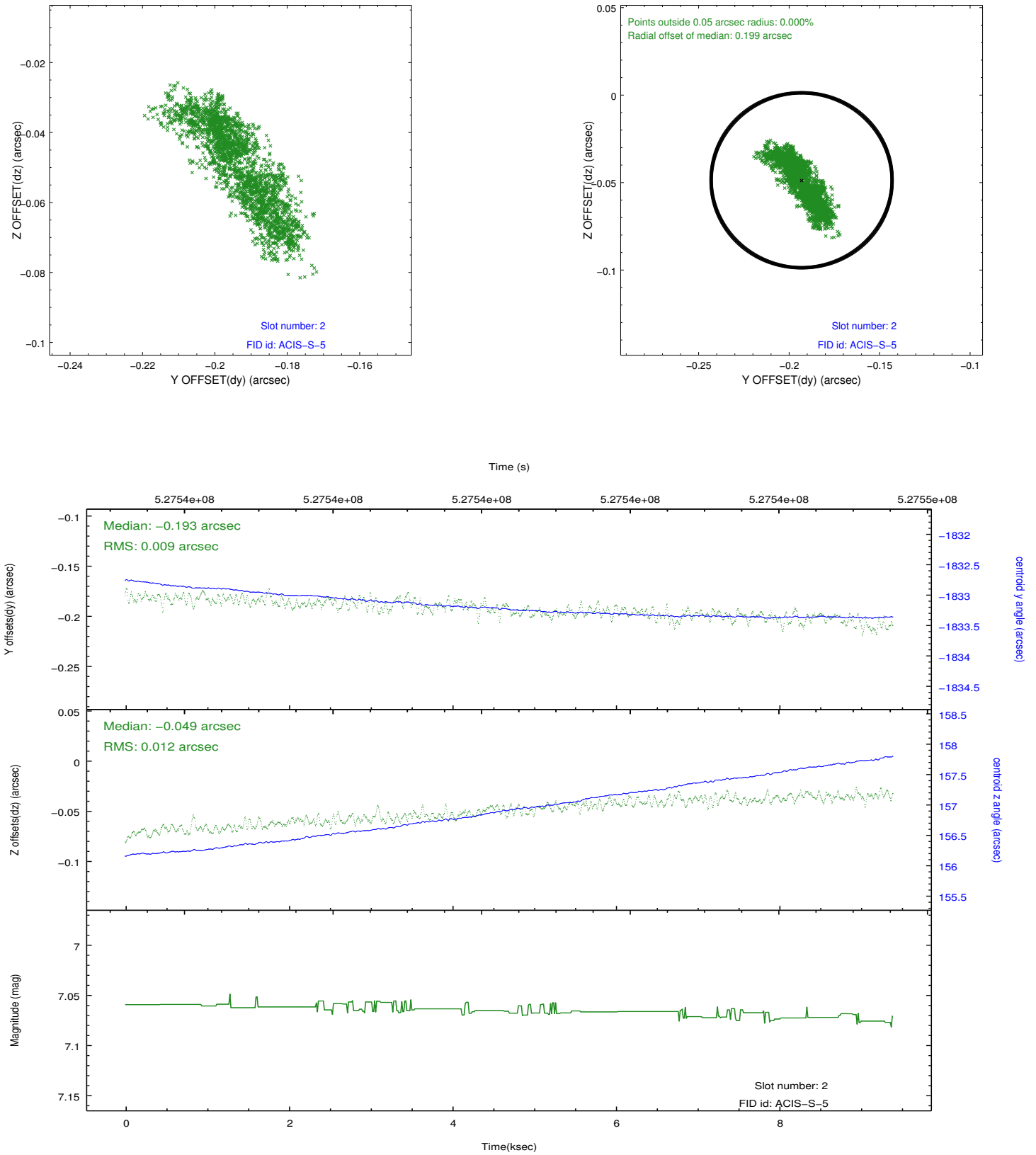
### 2.5.1 Slot 0



## 2.5.2 Slot 1



### 2.5.3 Slot 2



## A Summary

### A.1 Status

V&V Scientist	Beth Sundheim
V&V Date (YYYY-MM-DD)	2014.09.21
V&V Edition	1
V&V Disposition and Status	OK
V&V Charge Time	9.2876000714302

### A.2 Comments