

V&V Reference Report

L2 ASCDS Version : 10.2.4

Observation 15700 - L2 Version 1
Chandra X-Ray Center

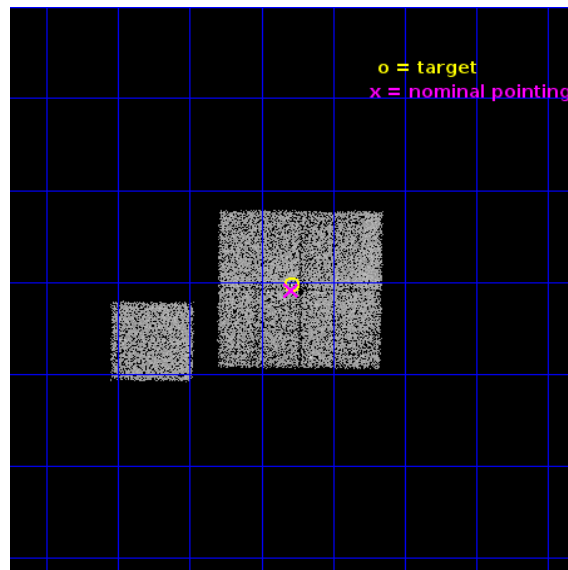
L2 Processing Date : Sep 25 2014

Contents

1	Front	2
2	OBI	3
2.1	OBI	3
2.1.1	Images	3
2.1.2	Bias	3
2.1.3	Parameters	4
2.1.4	Events	4
2.2	Compared Parameters	5
2.3	Aspect	6
2.4	Star Slots	9
2.4.1	Slot 3	9
2.4.2	Slot 4	10
2.4.3	Slot 5	11
2.4.4	Slot 6	12
2.4.5	Slot 7	13
2.5	FID Slots	14
2.5.1	Slot 0	14
2.5.2	Slot 1	15
2.5.3	Slot 2	16
A	Summary	17
A.1	Status	17
A.2	Comments	17

1 Front

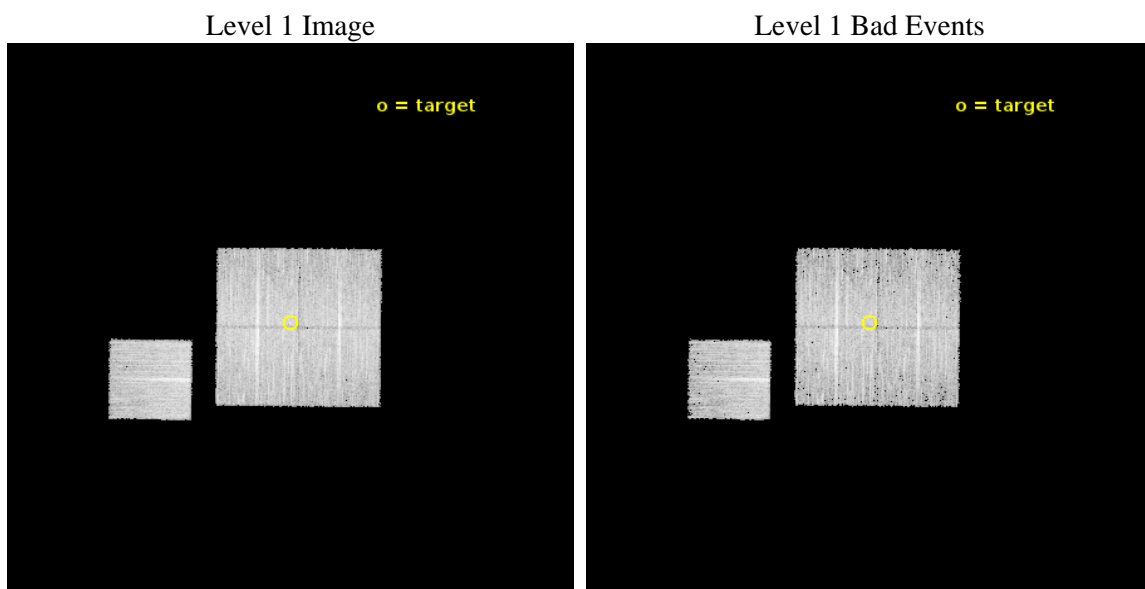
seq_num	200913	Sequence number
obs_id	15700	Observation id
title	CHANDRA X-RAY OBSERVATIONS OF THE ETA CAR ANALOG NAST1 (WR 122): IS IT A COLLIDING-WIND BINARY?	Proposal title
observer	Dr. Jon Mauerhan	Principal investigator
object	WR 122	Source name
dtcycle	0	
cycle	P	events from which exps? Prim/Second/Both
ra_targ	283.0725	Observer's specified target RA [deg]
dec_targ	0.995556	Observer's specified target Dec [deg]
ra_nom	283.07257455867	Nominal RA [deg]
dec_nom	0.98522524538271	Nominal Dec [deg]
roll_nom	270.62440122618	Nominal Roll [deg]
revision	1	Processing version of data
ontime	12080.700092912	Sum of GTIs [s]
livetime	11922.856852516	Livetime [s]
ontime0	12080.700092912	Sum of GTIs [s]
ontime1	12080.700092912	Sum of GTIs [s]
ontime2	12077.559122562	Sum of GTIs [s]
ontime3	12080.700092912	Sum of GTIs [s]
ontime6	12080.700092912	Sum of GTIs [s]
l2events	33124	Number of level 2 events



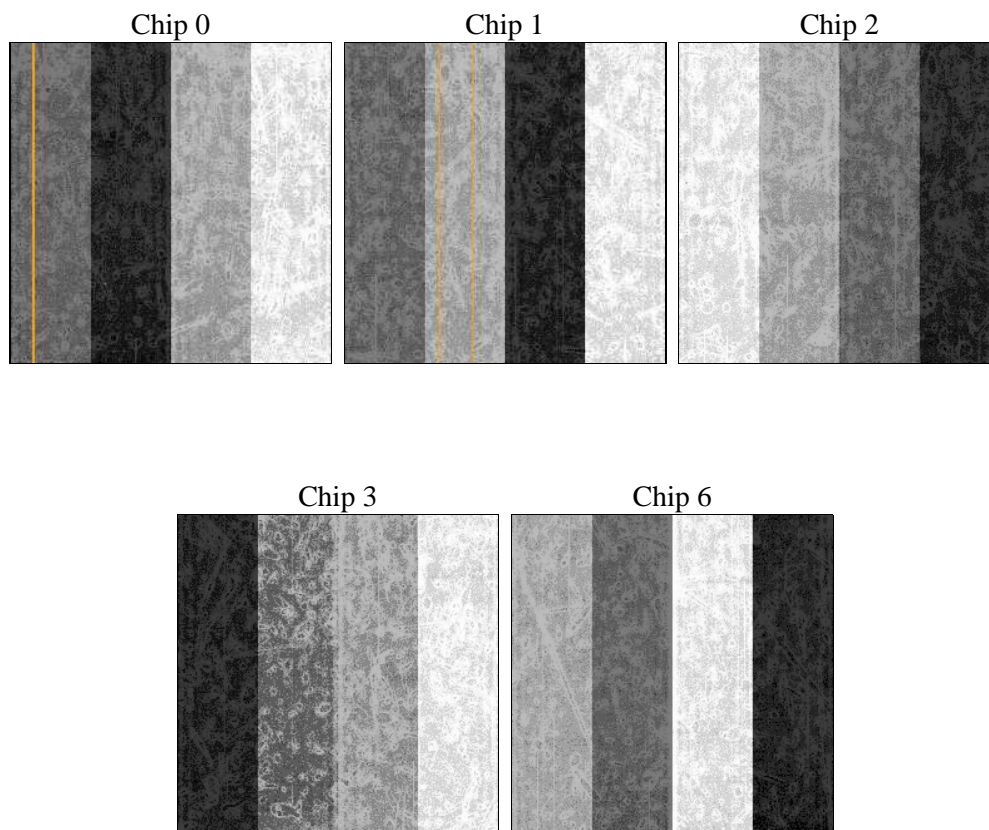
2 OBI

2.1 OBI

2.1.1 Images



2.1.2 Bias



2.1.3 Parameters

obi_num	0	Obi number	sched_exp_time	12000.000000	[s] Scheduled observation exposure time
ascdsver	10.2.4	Processing system revision	ontime	12080.700092912	Sum of GTIs [s]
caldsver	4.6.3	 	ontime0	12080.700092912	Sum of GTIs [s]
date	2014-09-25T13:53:22	Date and time of file creation	ontime1	12080.700092912	Sum of GTIs [s]
revision	1	Processing version of data	ontime2	12077.559122562	Sum of GTIs [s]
			ontime3	12080.700092912	Sum of GTIs [s]
			ontime6	12080.700092912	Sum of GTIs [s]
			l1events	310973	Number of level 1 events

2.1.4 Events

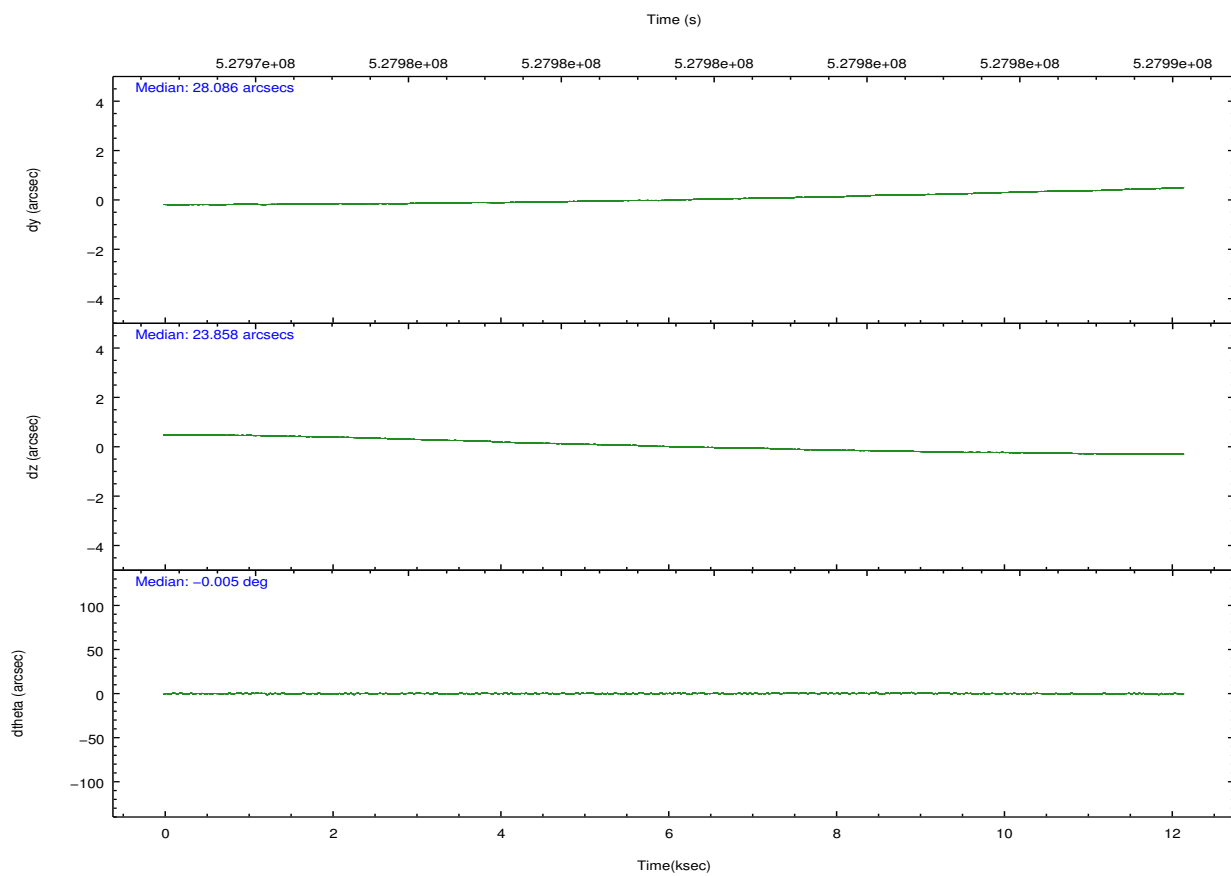
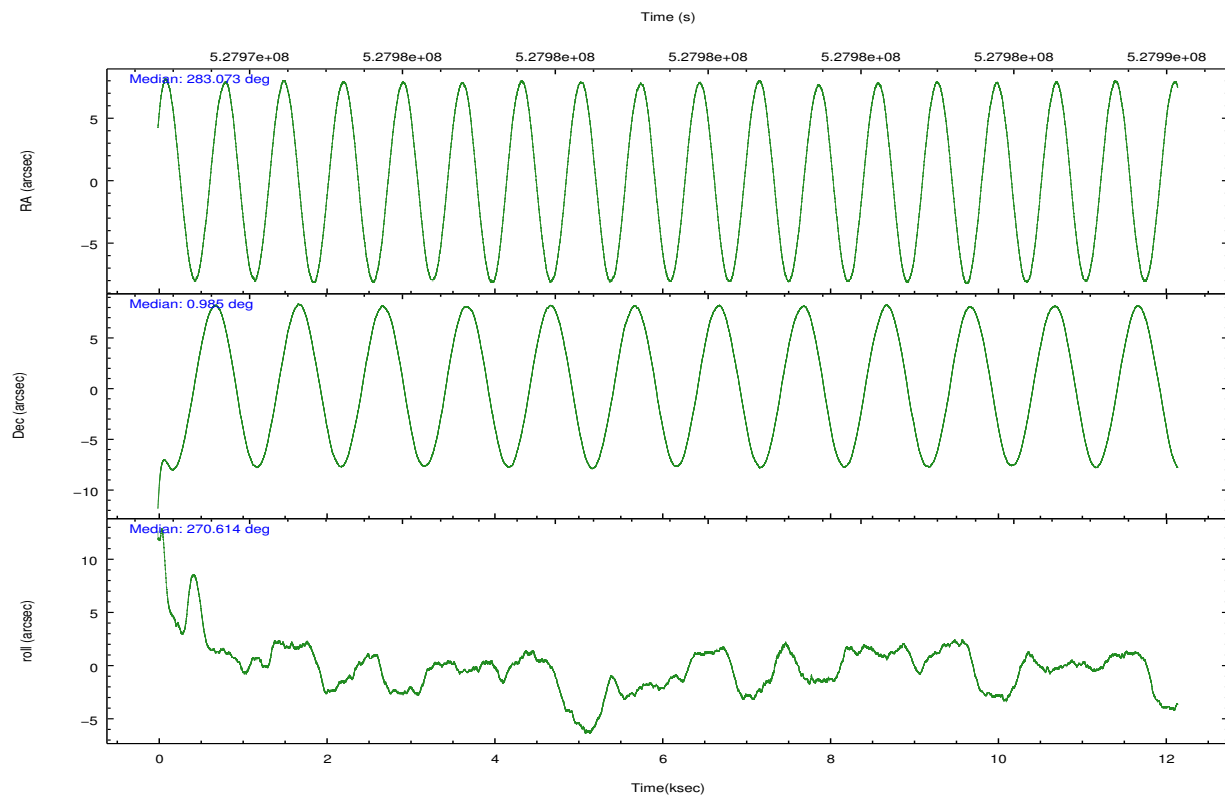
	ccd 0	ccd 1	ccd 2	ccd 3	ccd 6
level 1 events	59038	58465	65331	63128	65011
rejected events	51210	50016	57764	55742	57224
rejected %	86%	85%	88%	88%	88%

	ccd 0	ccd 1	ccd 2	ccd 3	ccd 6
grade 0 events	2782	2972	2833	2609	2663
	4%	5%	4%	4%	4%
grade 1 events	35	30	44	31	39
	0%	0%	0%	0%	0%
grade 2 events	1988	2069	1765	1653	1758
	3%	3%	2%	2%	2%
grade 3 events	794	809	773	782	826
	1%	1%	1%	1%	1%
grade 4 events	758	824	730	809	733
	1%	1%	1%	1%	1%
grade 5 events	3122	3231	2789	3520	3303
	5%	5%	4%	5%	5%
grade 6 events	1511	1780	1470	1538	1810
	2%	3%	2%	2%	2%
grade 7 events	48048	46750	54927	52186	53879
	81%	79%	84%	82%	82%

2.2 Compared Parameters

Parameter	Planned	Actual	Parameter	Planned	Actual
Instrument	ACIS	ACIS	Obspar format version number	7	7
Detector	ACIS-01236	ACIS-01236	Obspar file type	PREDICTED	ACTUAL
Grating	NONE	NONE	Obspar update status	NONE	UPDATED
Data mode	FAINT	FAINT	Number of optional ACIS chips dropped	0	0
Observation mode	POINTING	POINTING	On-chip summing requested	N	N
[deg] Pointing RA	283.058399	283.0725745586726	Subarray requested	NONE	NONE
[deg] Pointing Dec	1.008953	0.9852252453827115	Alternating exposures requested	N	N
[deg] Pointing Roll	270.415964	270.6244012261833	[s] Primary exposure time	0.000000	3.1
[mm] SIM focus pos	-0.782348	-0.7809083437167272			
[mm] SIM defocus	0	0.001439871863259334			
[mm] SIM translation stage pos	-233.592463	-233.5874344608287			
[mm] SIM translation stage offset	0	-0.005018542100998502			
[s] Observation start time (MET)	527973543.184000	527972463.30475			
Observation start date	2014-09-24T19:17:56	2014-09-24T19:01:03			
[s] Observation end time (MET)	527985543.184000	527986314.13052			
Observation end date	2014-09-24T22:37:56	2014-09-24T22:51:54			
Read mode	TIMED	TIMED			

2.3 Aspect

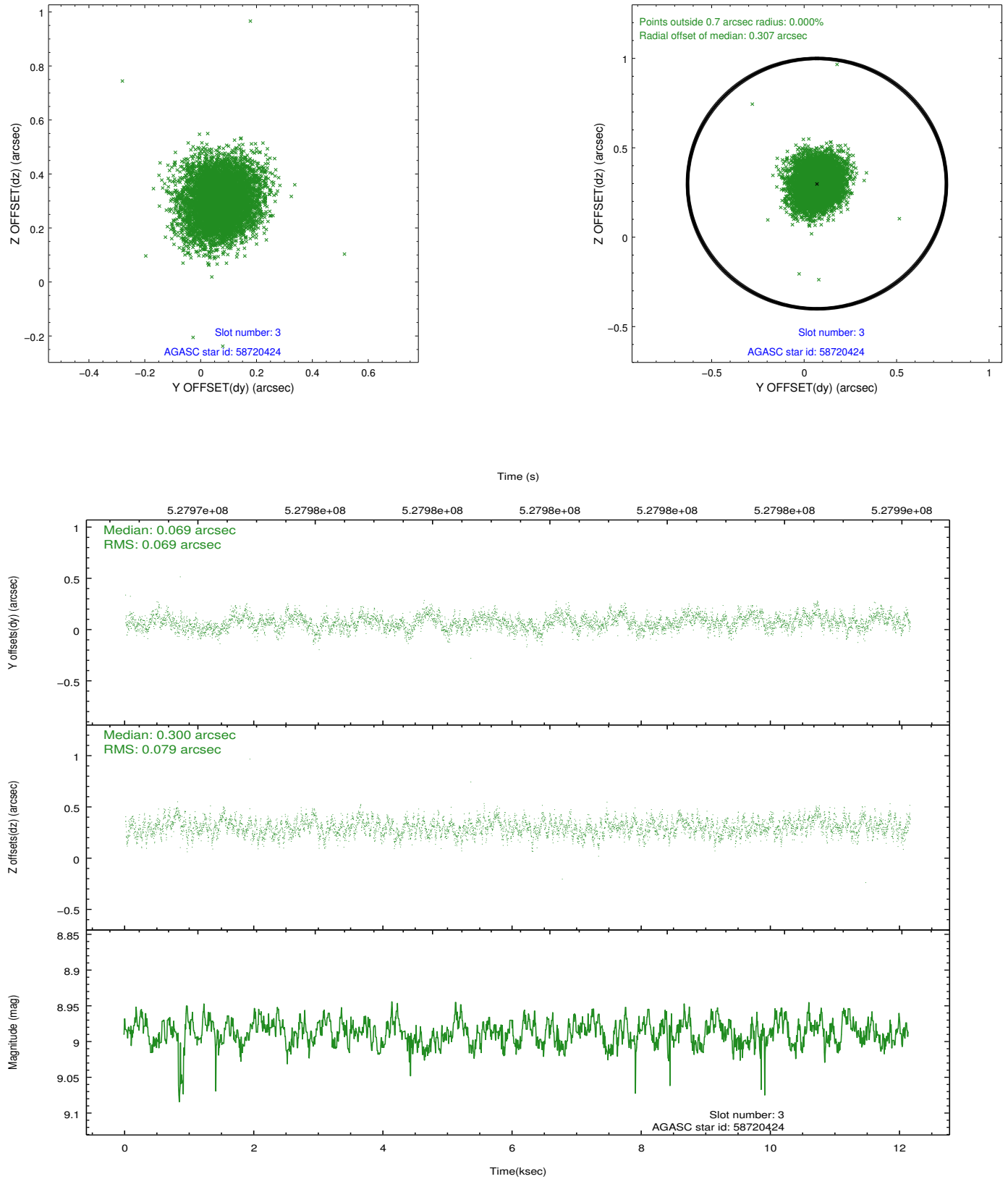


Slot Statistics

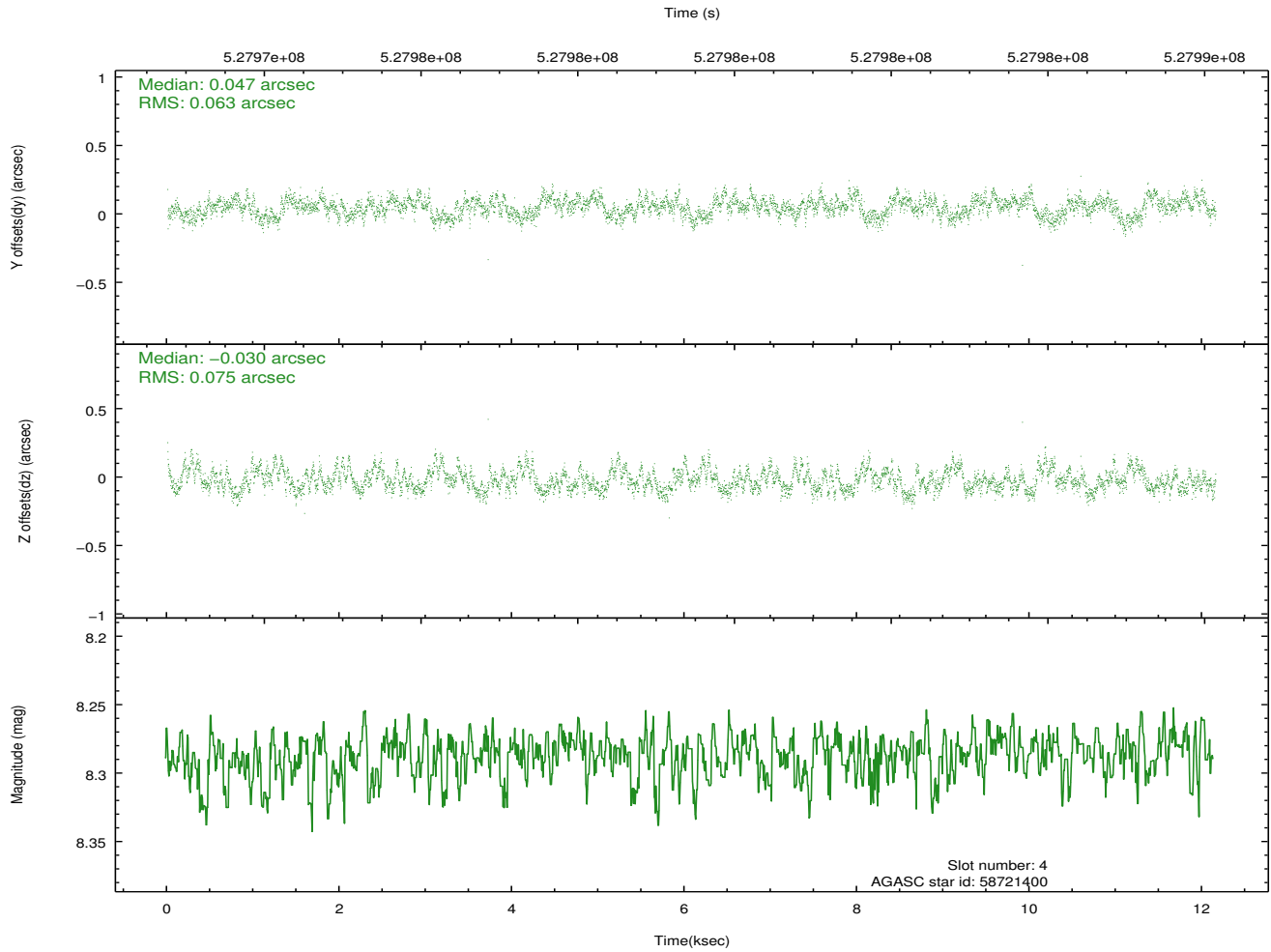
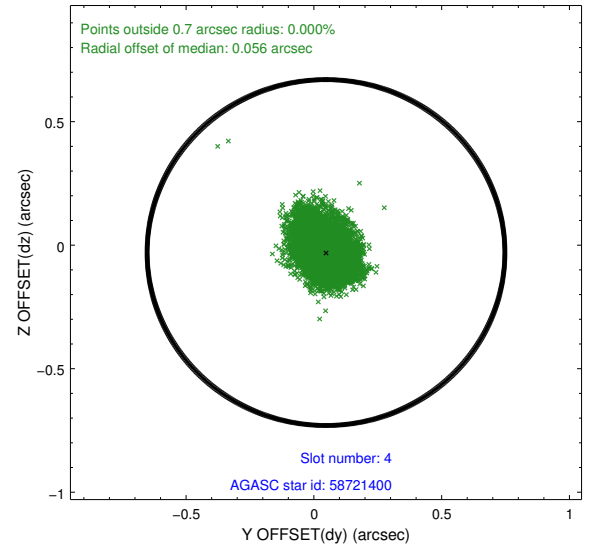
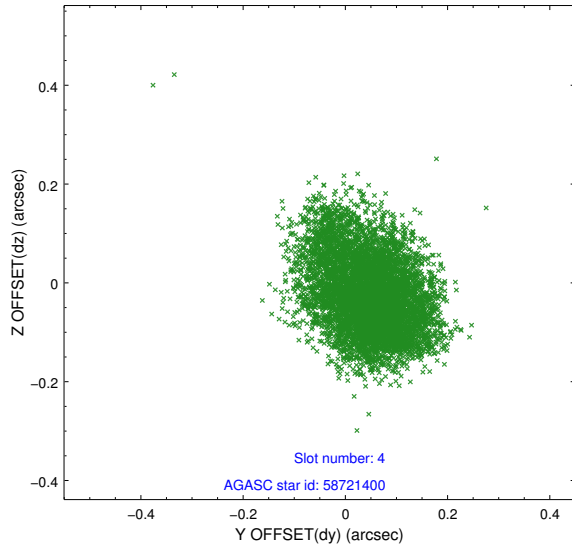
slot	status	id	mag	n_pts	med_dy	med_dz	dr1	dr2	ra	dec	mean_y	mean_z
0	FID	ACIS-I-1	7.07	2964	0.011	0.060	0.010	0.025	0.000000	0.000000	911.01	-847.62
1	FID	ACIS-I-5	7.06	2965	-0.255	0.016	0.007	0.013	0.000000	0.000000	-1837.24	1049.46
2	FID	ACIS-I-6	7.07	2964	0.153	-0.008	0.011	0.018	0.000000	0.000000	376.12	1694.52
3	GUIDE	58720424	8.99	5922	0.069	0.300	0.112	0.178	282.873634	1.408205	-1441.48	-654.09
4	GUIDE	58721400	8.29	5929	0.047	-0.030	0.105	0.167	282.817104	0.833240	626.66	-872.61
5	GUIDE	58852048	8.36	5928	-0.102	-0.143	0.099	0.157	283.366398	0.870285	507.27	1104.95
6	GUIDE	58724088	6.70	5929	0.035	0.026	0.104	0.170	282.404972	0.836197	605.71	-2355.89
7	GUIDE	58852304	9.33	5915	-0.051	-0.158	0.138	0.220	283.709254	1.197635	-662.77	2346.39

2.4 Star Slots

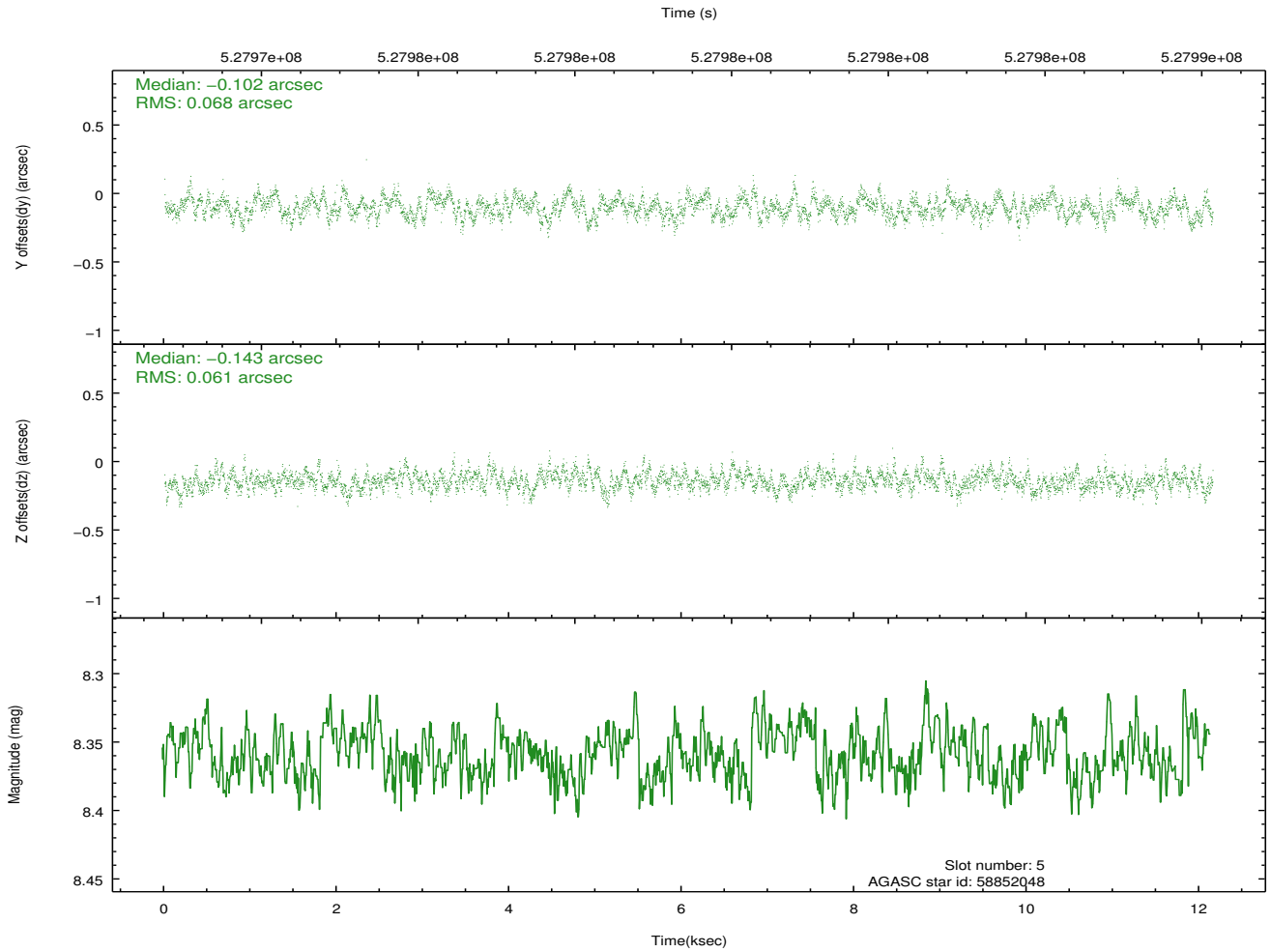
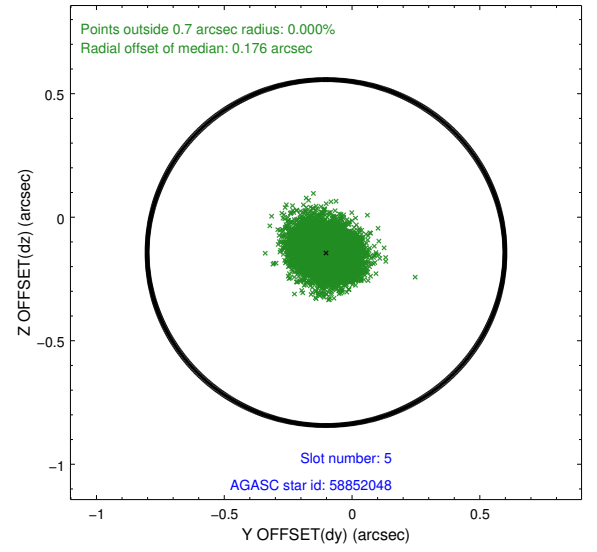
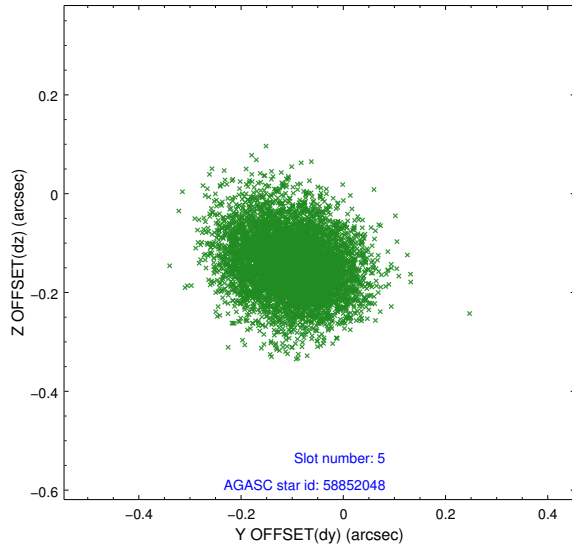
2.4.1 Slot 3



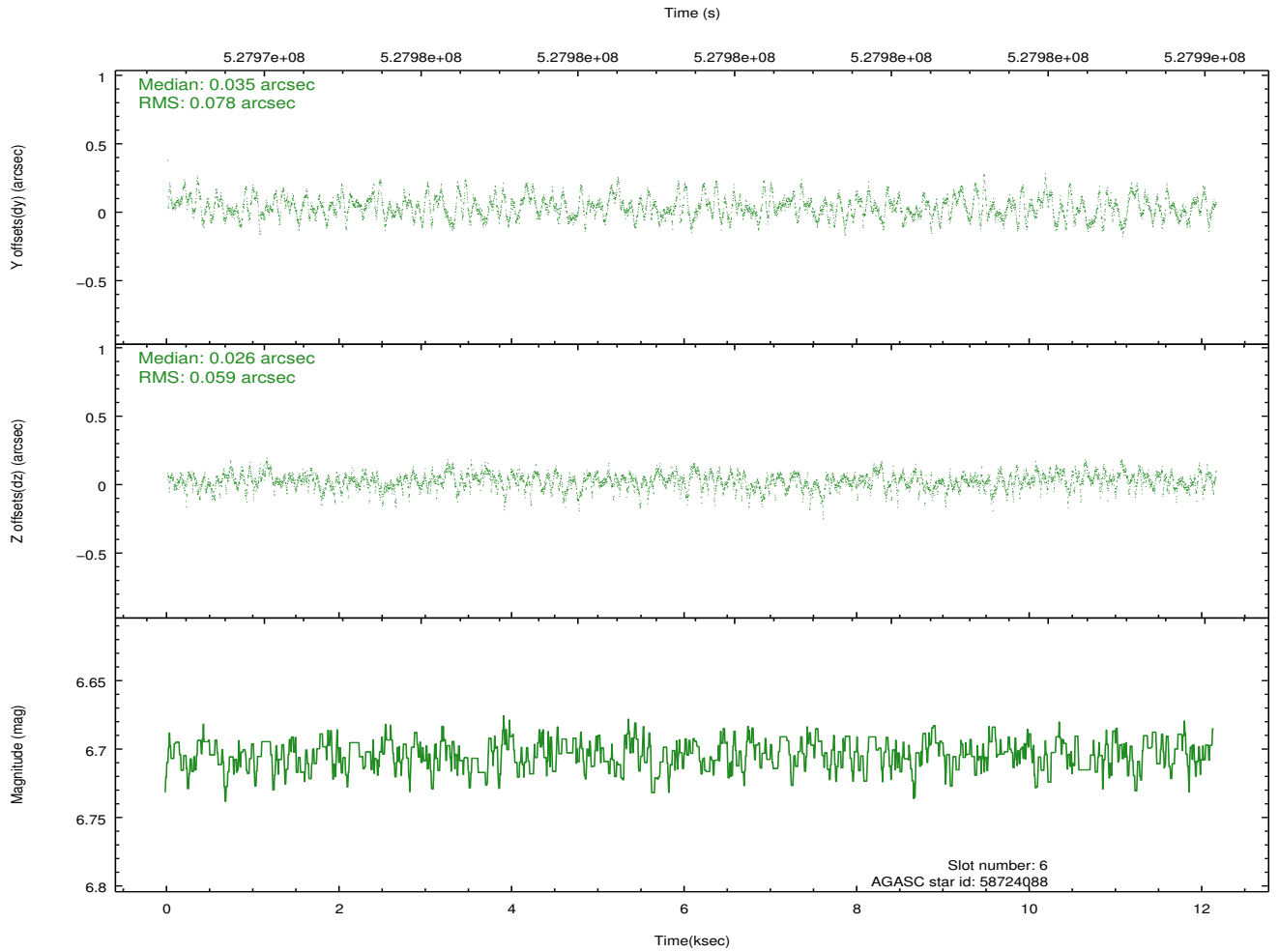
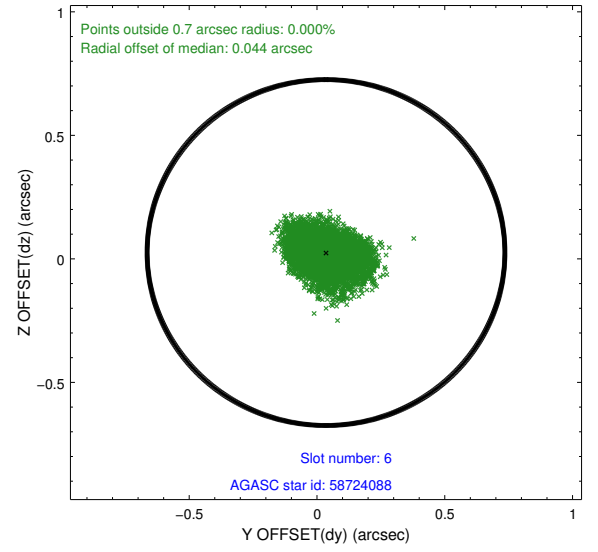
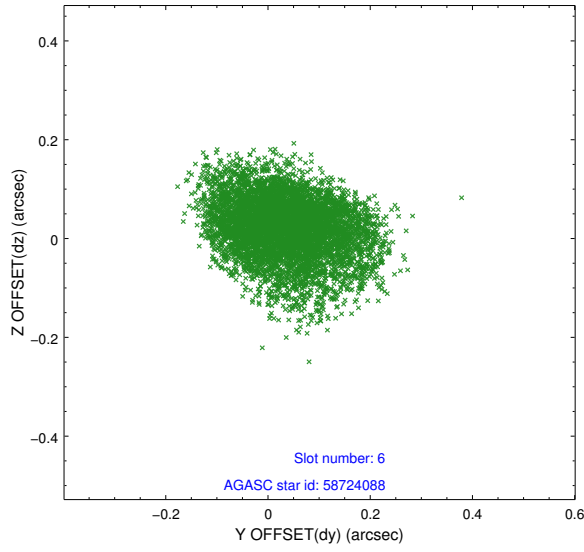
2.4.2 Slot 4



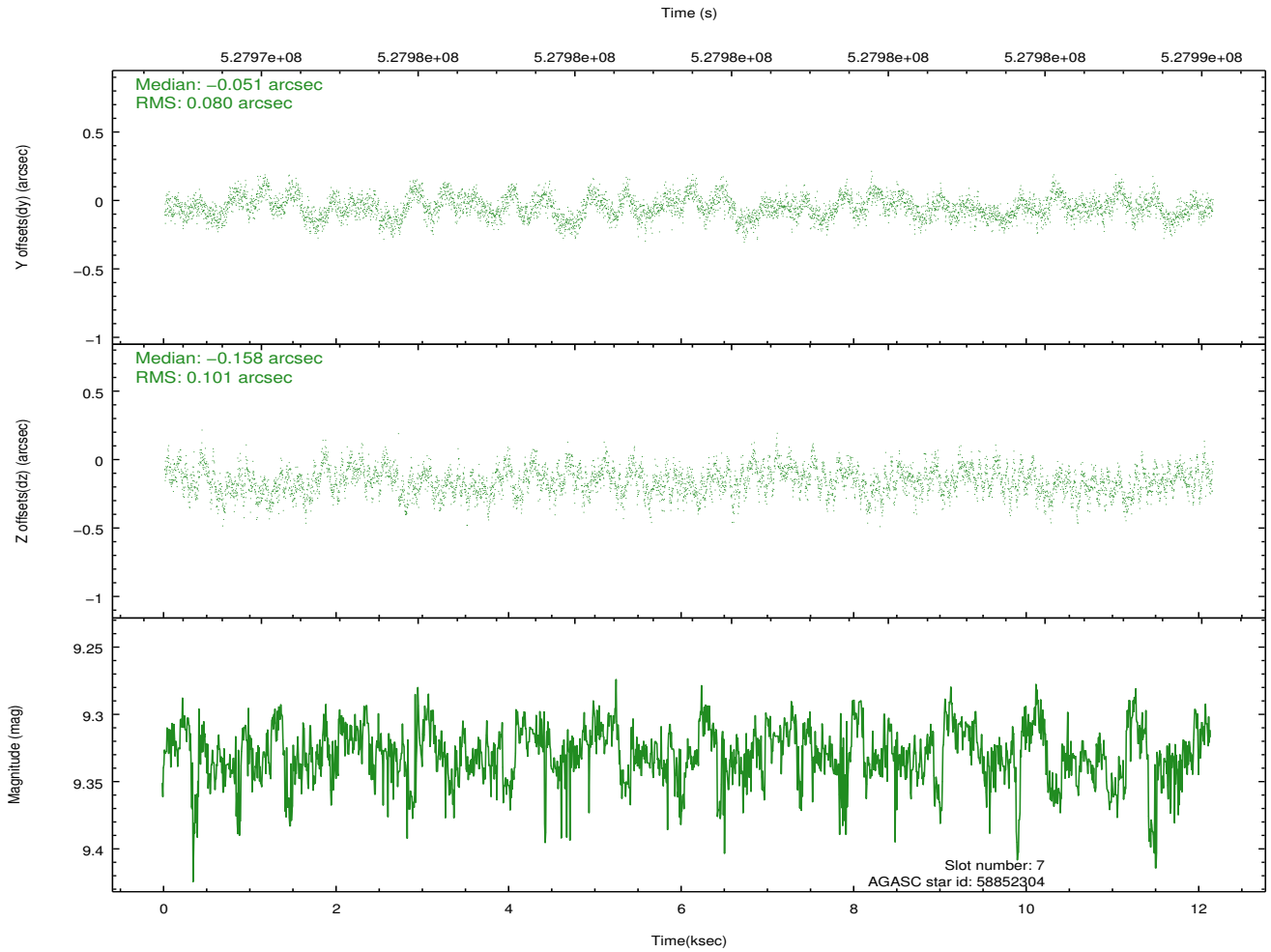
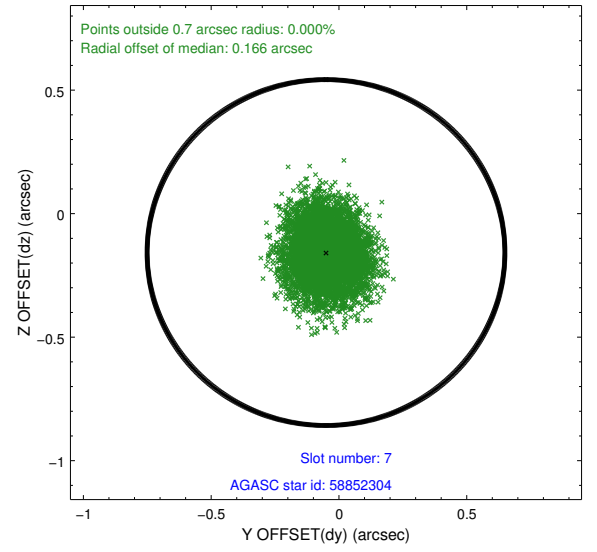
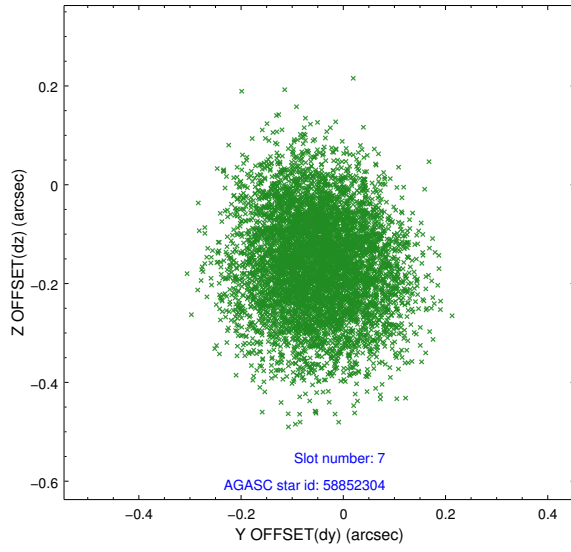
2.4.3 Slot 5



2.4.4 Slot 6

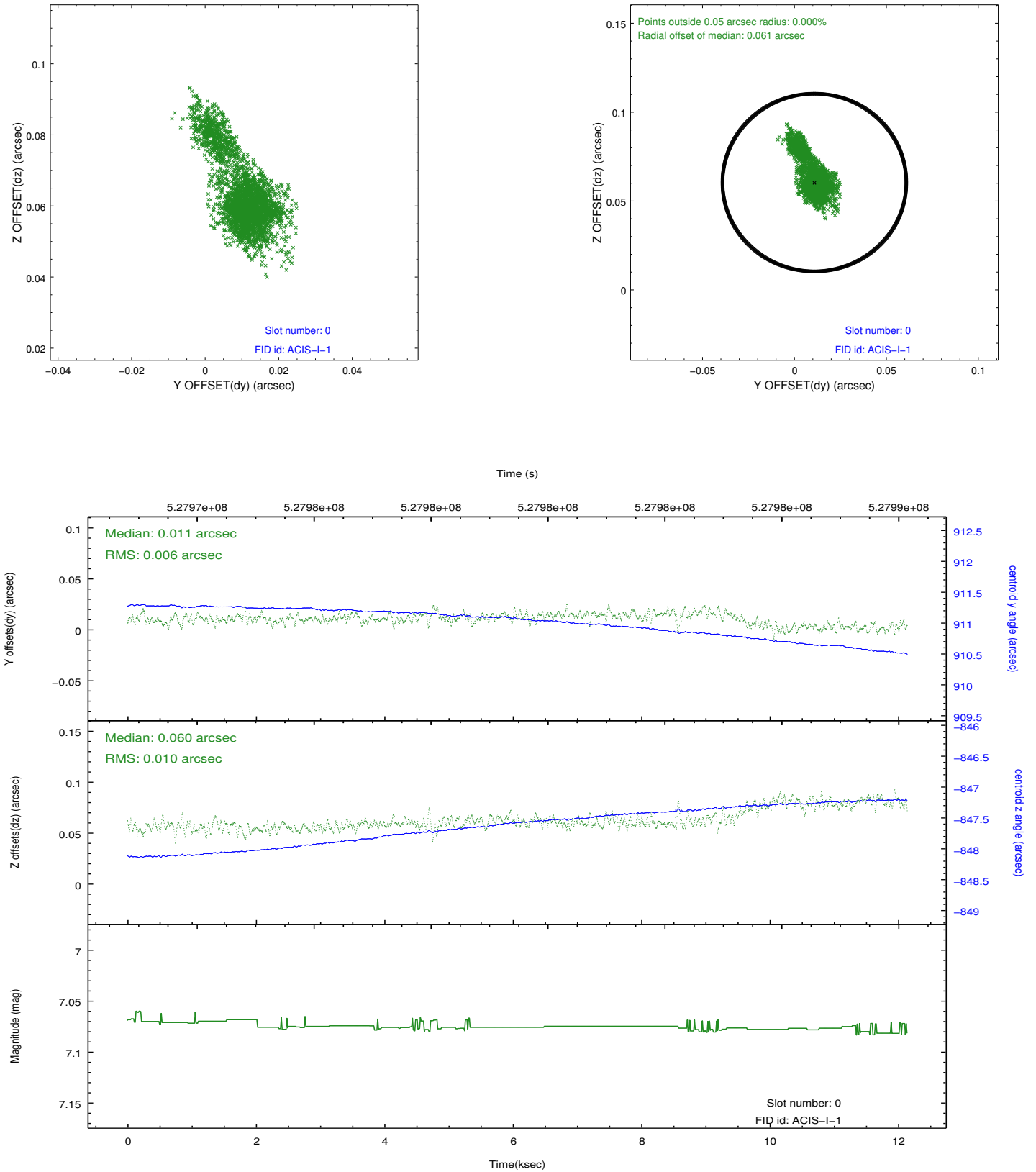


2.4.5 Slot 7

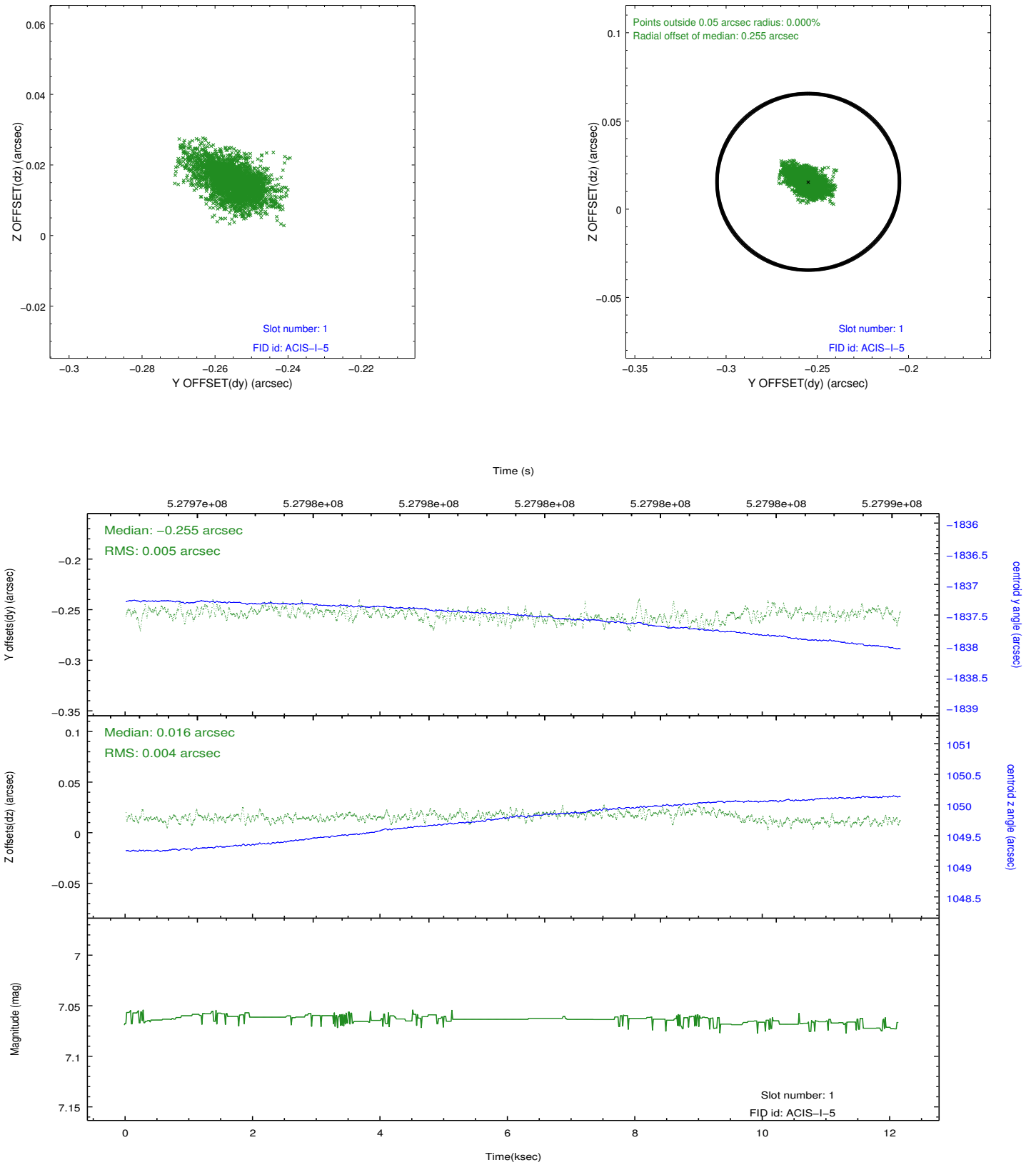


2.5 FID Slots

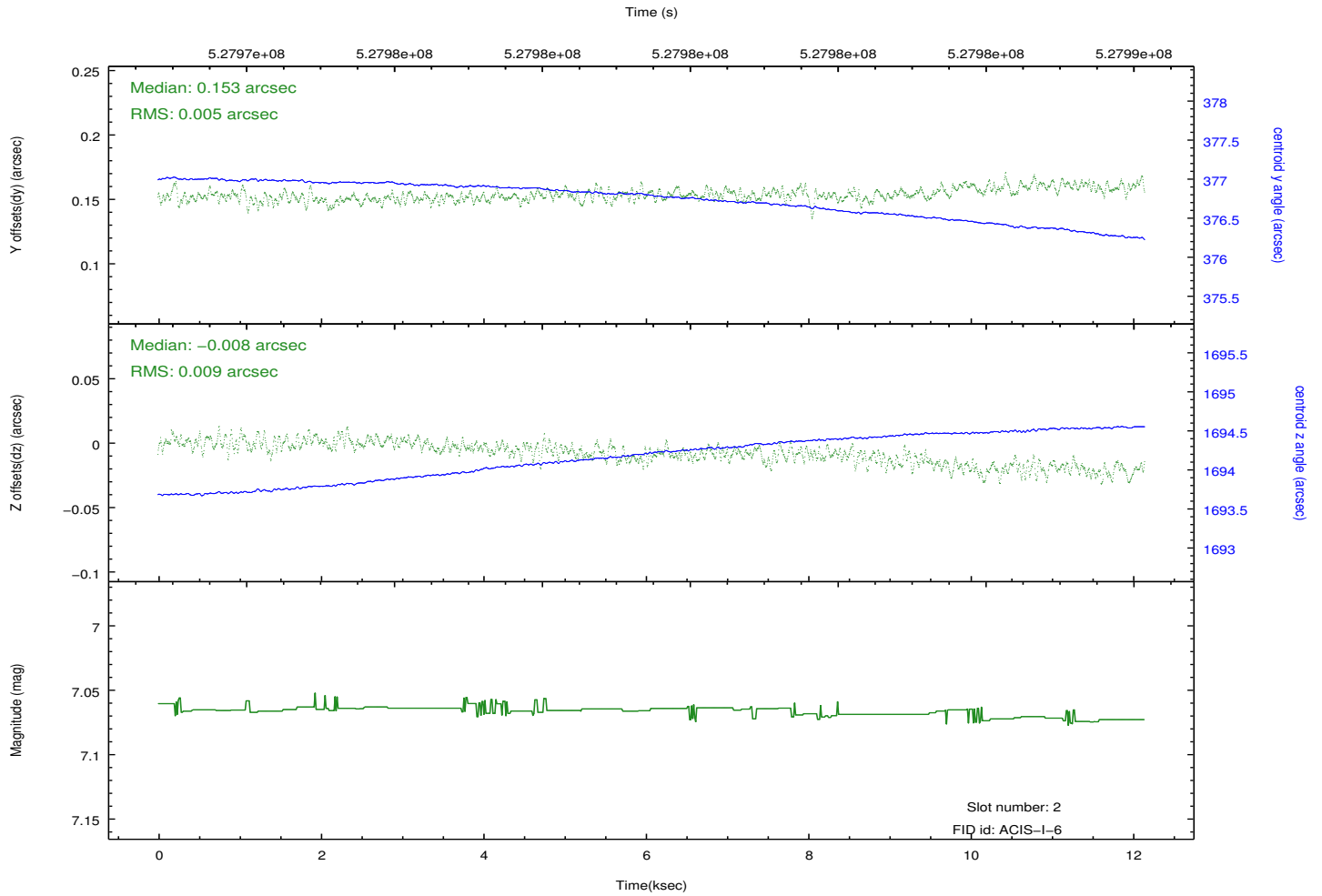
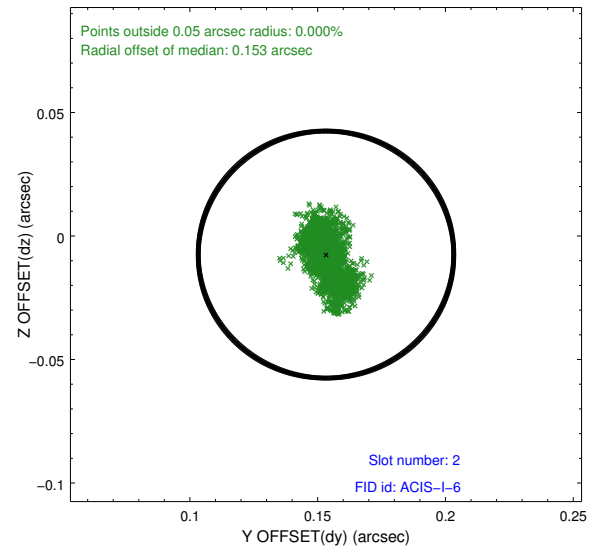
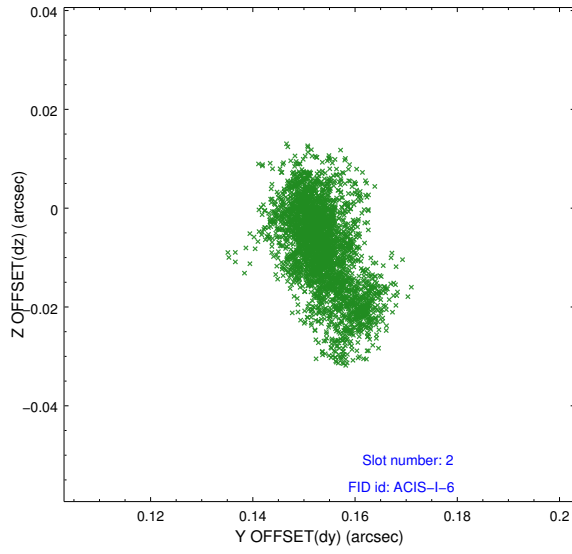
2.5.1 Slot 0



2.5.2 Slot 1



2.5.3 Slot 2



A Summary

A.1 Status

V&V Scientist	Jen Lauer
V&V Date (YYYY-MM-DD)	2014.09.25
V&V Edition	1
V&V Disposition and Status	OK
V&V Charge Time	12.080700092912

A.2 Comments