

V&V Reference Report

L2 ASCDS Version : 8.5.1.1

Observation 15360 - L2 Version 2
Chandra X-Ray Center

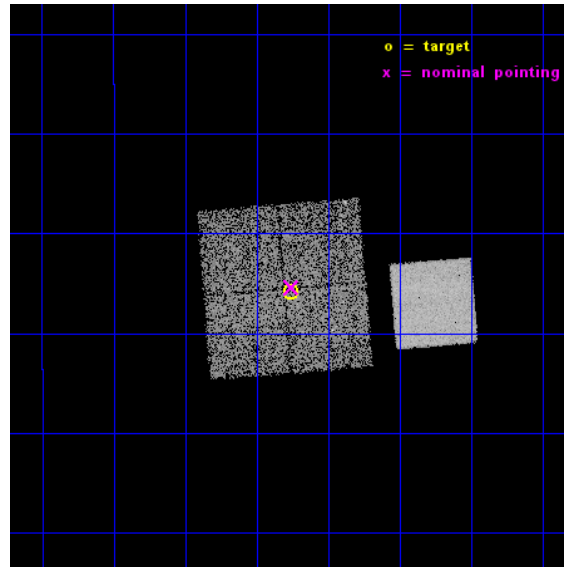
L2 Processing Date : Dec 1 2014

Contents

1	Front	2
2	OBI	3
2.1	OBI	3
2.1.1	Images	3
2.1.2	Bias	3
2.1.3	Parameters	4
2.1.4	Events	4
2.2	Compared Parameters	5
2.3	Aspect	6
2.4	Star Slots	9
2.4.1	Slot 3	9
2.4.2	Slot 4	10
2.4.3	Slot 5	11
2.4.4	Slot 6	12
2.4.5	Slot 7	13
2.5	FID Slots	14
2.5.1	Slot 0	14
2.5.2	Slot 1	15
2.5.3	Slot 2	16
A	Summary	17
A.1	Status	17
A.2	Comments	17

1 Front

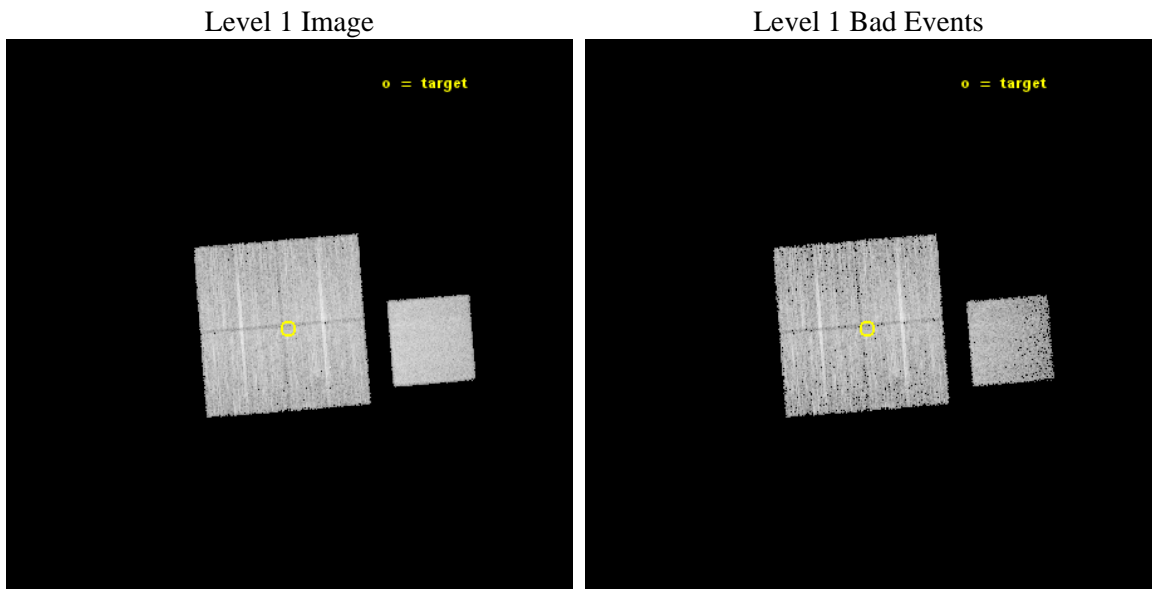
seq_num	502025	Sequence number
obs_id	15360	Observation id
title	Snap-shot survey of galactic gamma-ray sources	Proposal title
observer	Professor Gordon Garmire	Principal investigator
object	HESS J1843-033A	Source name
dtcycle	0	
cycle	P	events from which exps? Prim/Second/Both
ra_targ	280.815833	Observer's specified target RA [deg]
dec_targ	-3.264389	Observer's specified target Dec [deg]
ra_nom	280.81408805873	Nominal RA [deg]
dec_nom	-3.2565444005266	Nominal Dec [deg]
roll_nom	85.417933185928	Nominal Roll [deg]
revision	2	Processing version of data
ontime	10065.640089929	Sum of GTIs [s]
livetime	9934.1250919377	Livetime [s]
ontime0	10065.516969919	Sum of GTIs [s]
ontime1	10065.558009923	Sum of GTIs [s]
ontime2	10059.317168891	Sum of GTIs [s]
ontime3	10065.640089929	Sum of GTIs [s]
ontime7	10065.681129932	Sum of GTIs [s]
l2events	50028	Number of level 2 events



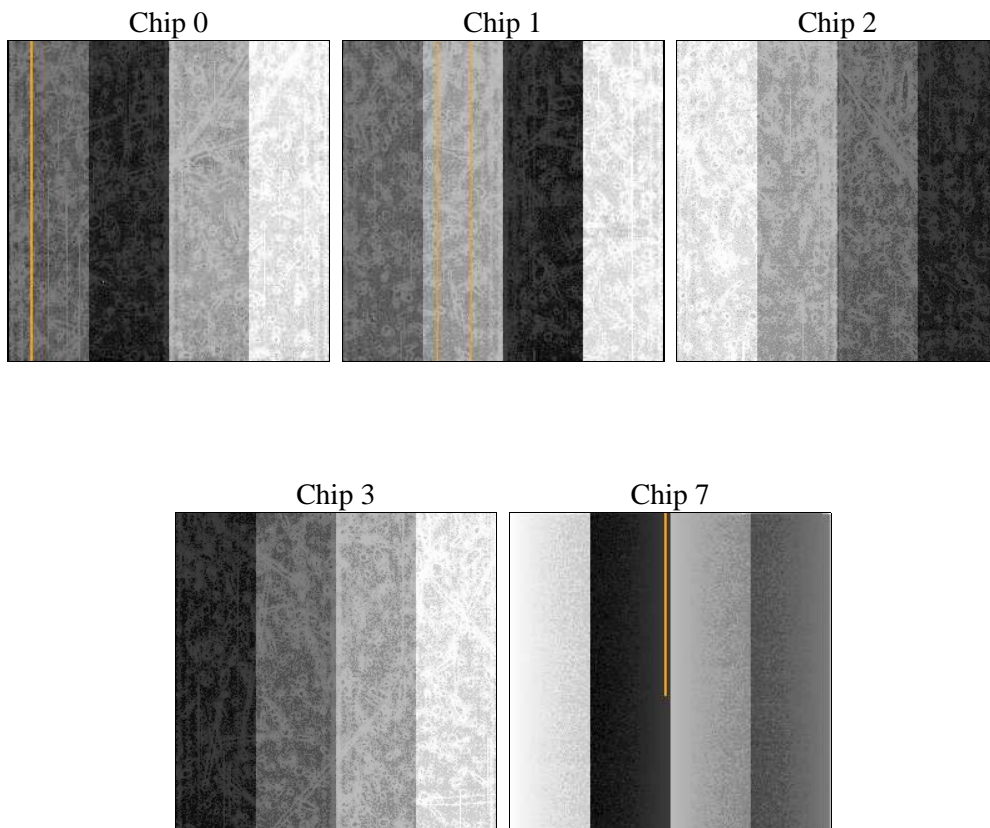
2 OBI

2.1 OBI

2.1.1 Images



2.1.2 Bias



2.1.3 Parameters

obi_num	1	Obi number	sched_exp_time	10000.000000	[s] Scheduled observation exposure time
ascdsver	10.3	Processing system revision	ontime	10065.640089929	Sum of GTIs [s]
caldsver	4.6.4	 	ontime0	10065.516969919	Sum of GTIs [s]
date	2014-12-01T19:09:32	Date and time of file creation	ontime1	10065.558009923	Sum of GTIs [s]
revision	2	Processing version of data	ontime2	10059.317168891	Sum of GTIs [s]
			ontime3	10065.640089929	Sum of GTIs [s]
			ontime7	10065.681129932	Sum of GTIs [s]
			l1events	263328	Number of level 1 events

2.1.4 Events

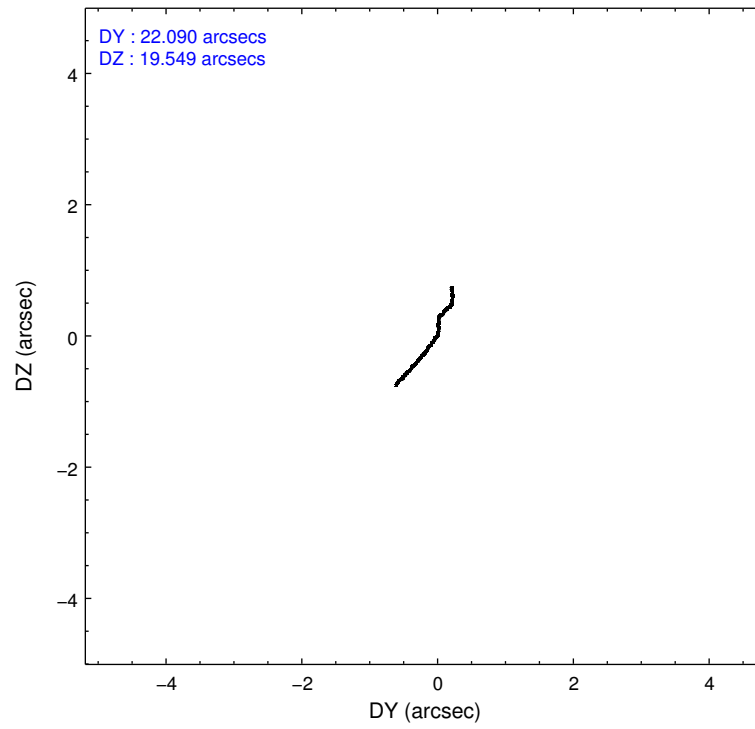
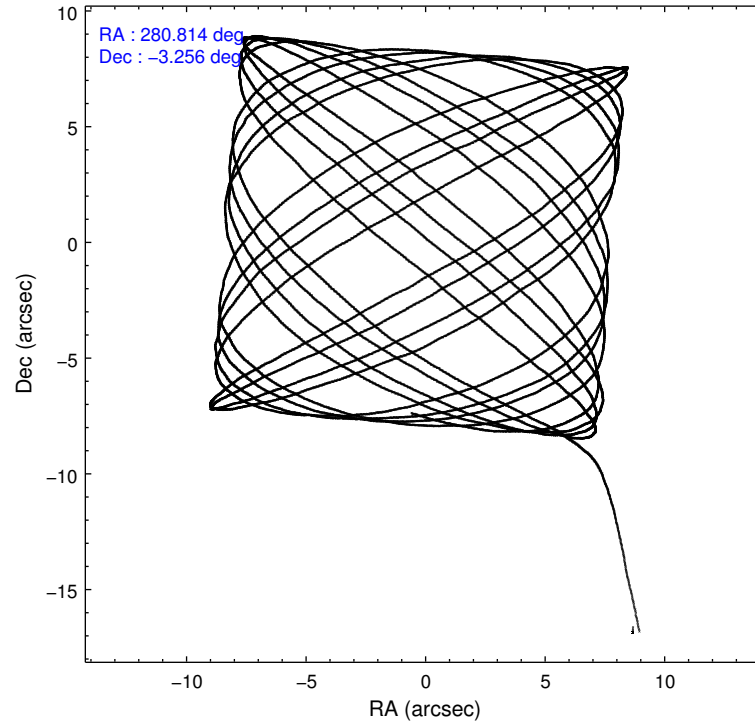
	ccd 0	ccd 1	ccd 2	ccd 3	ccd 7
level 1 events	48512	50265	52884	50662	61005
rejected events	42257	43202	46416	44249	31866
rejected %	87%	85%	87%	87%	52%

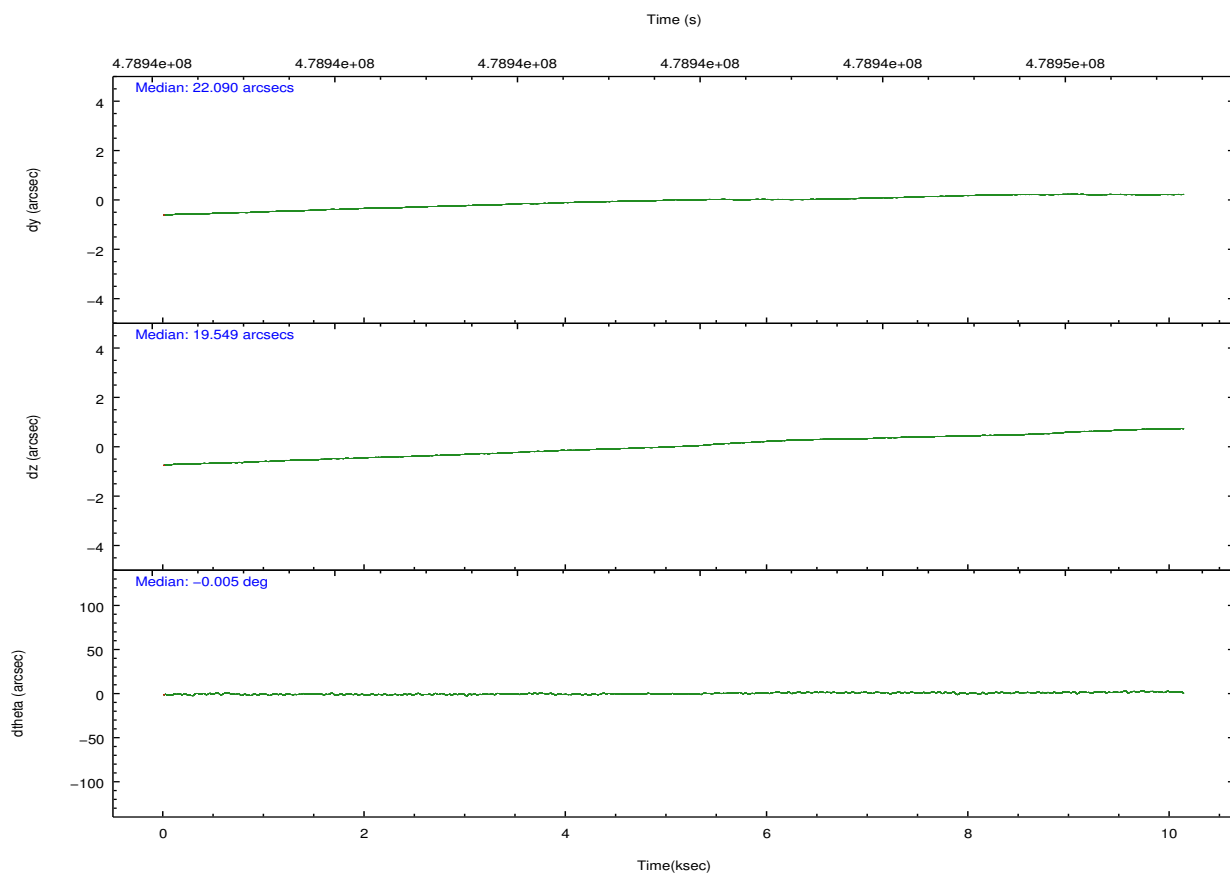
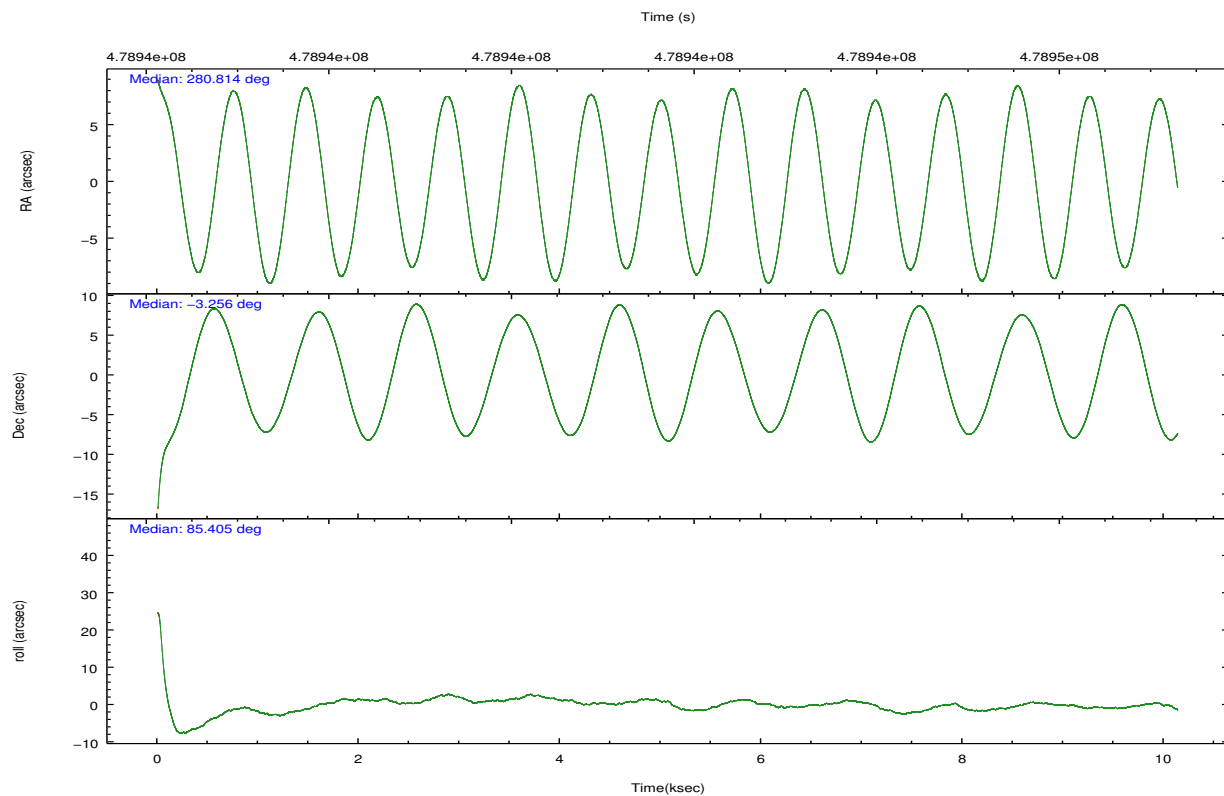
	ccd 0	ccd 1	ccd 2	ccd 3	ccd 7
grade 0 events	2396	2666	2658	2506	2972
	4%	5%	5%	4%	4%
grade 1 events	29	22	36	44	86
	0%	0%	0%	0%	0%
grade 2 events	1490	1606	1574	1383	6235
	3%	3%	2%	2%	10%
grade 3 events	662	685	610	647	2563
	1%	1%	1%	1%	4%
grade 4 events	578	721	585	637	2572
	1%	1%	1%	1%	4%
grade 5 events	1917	2175	1788	2296	6439
	3%	4%	3%	4%	10%
grade 6 events	1130	1387	1045	1243	14805
	2%	2%	1%	2%	24%
grade 7 events	40310	41003	44588	41906	25333
	83%	81%	84%	82%	41%

2.2 Compared Parameters

Parameter	Planned	Actual	Parameter	Planned	Actual
Instrument	ACIS	ACIS	Obspar format version number	7	7
Detector	ACIS-01237	ACIS-01237	Obspar file type	PREDICTED	ACTUAL
Grating	NONE	NONE	Obspar update status	NONE	UPDATED
Data mode	VFAINT	VFAINT	CCD I0 on	Y	Y
Observation mode	POINTING	POINTING	CCD I1 on	Y	Y
[deg] Pointing RA	280.825973	280.8140880587291	CCD I2 on	Y	Y
[deg] Pointing Dec	-3.281293	-3.256544400526607	CCD I3 on	Y	Y
[deg] Pointing Roll	85.209897	85.41793318592761	CCD S0 on	N	N
[mm] SIM focus pos	-0.782348	-0.7809083437167272	CCD S1 on	N	N
[mm] SIM defocus	0	0.001439871863259334	CCD S2 on	N	N
[mm] SIM translation stage pos	-233.592463	-233.5874344608287	CCD S3 on	O1	Y
[mm] SIM translation stage offset	0	-0.005018542100998502	CCD S4 on	N	N
[s] Observation start time (MET)	478936784.184000	478935129.14089	CCD S5 on	N	N
Observation start date	2013-03-06T05:58:37	2013-03-06T05:32:09	Number of optional ACIS chips dropped	0	0
[s] Observation end time (MET)	478946784.184000	478947643.36657	On-chip summing requested	N	N
Observation end date	2013-03-06T08:45:17	2013-03-06T09:00:43	Subarray requested	NONE	NONE
Read mode	TIMED	TIMED	Alternating exposures requested	N	N
			[s] Primary exposure time	0.000000	3.1

2.3 Aspect



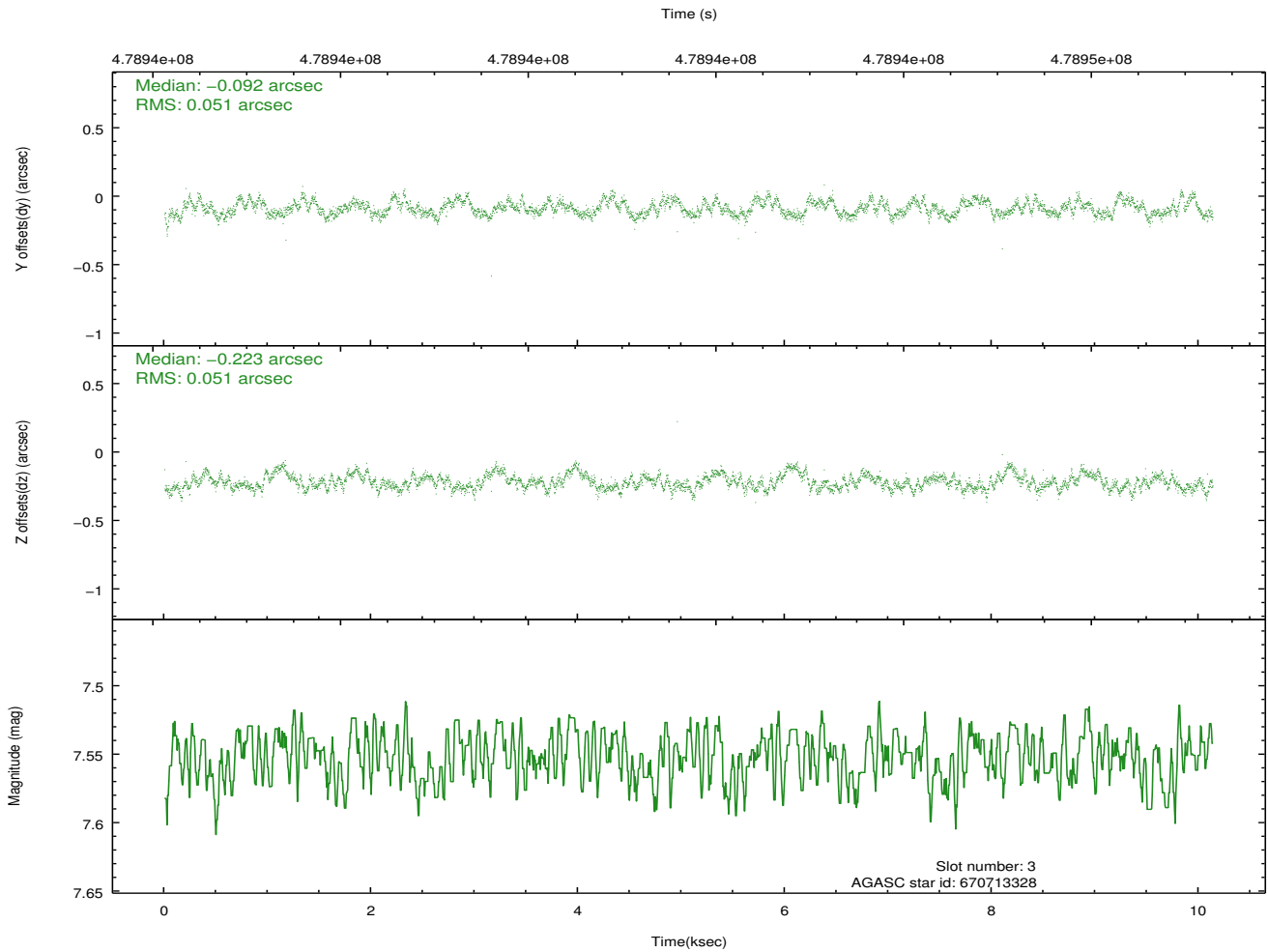
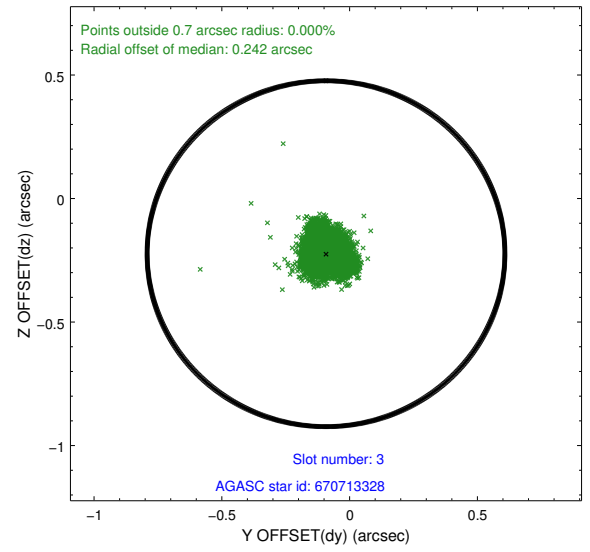
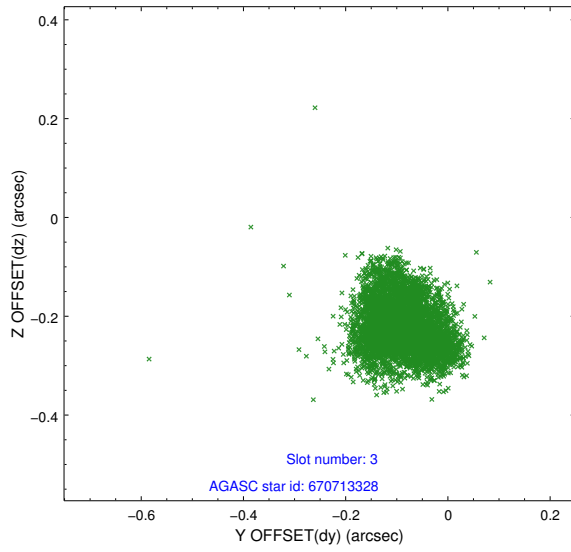


Slot Statistics

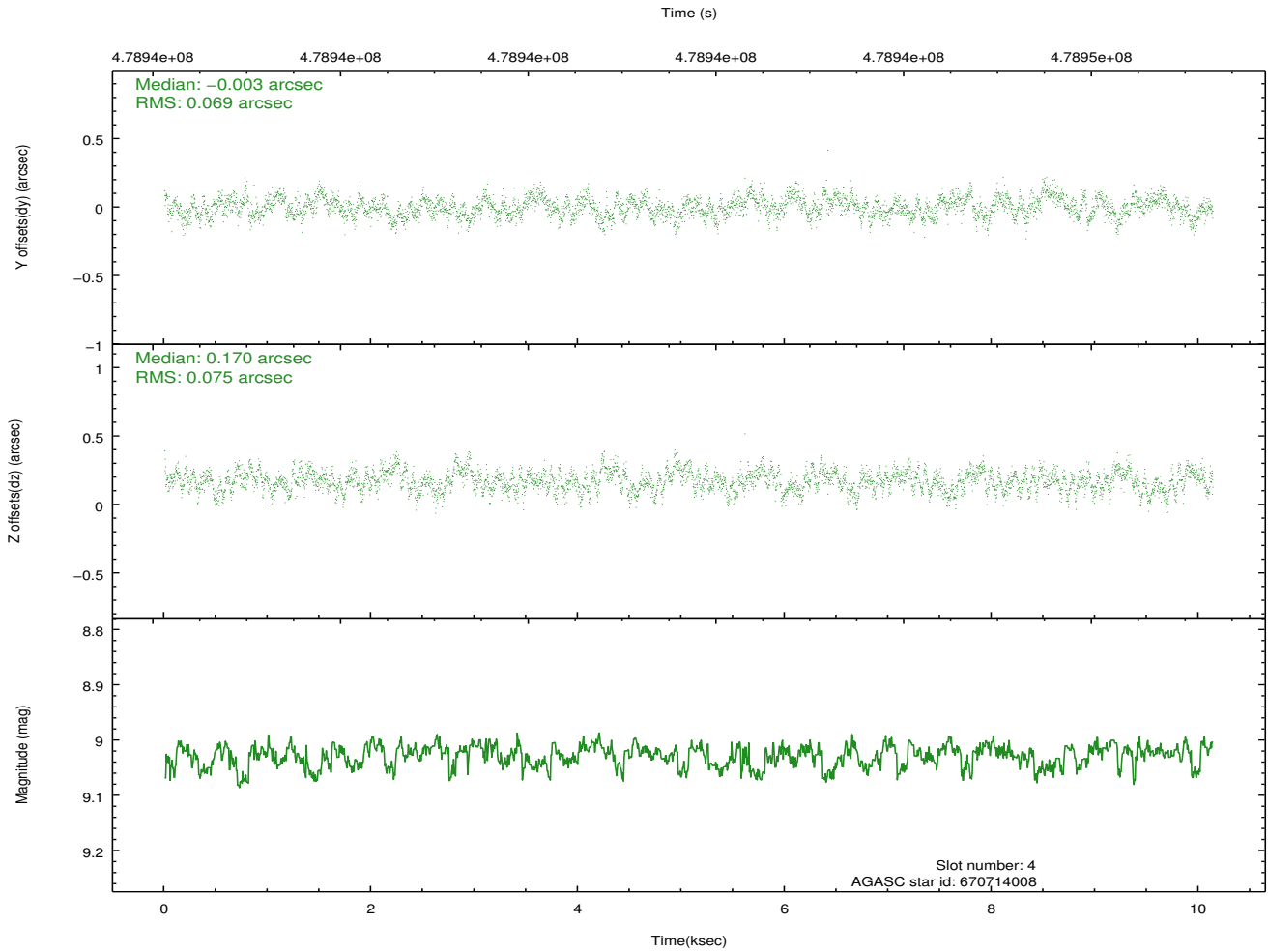
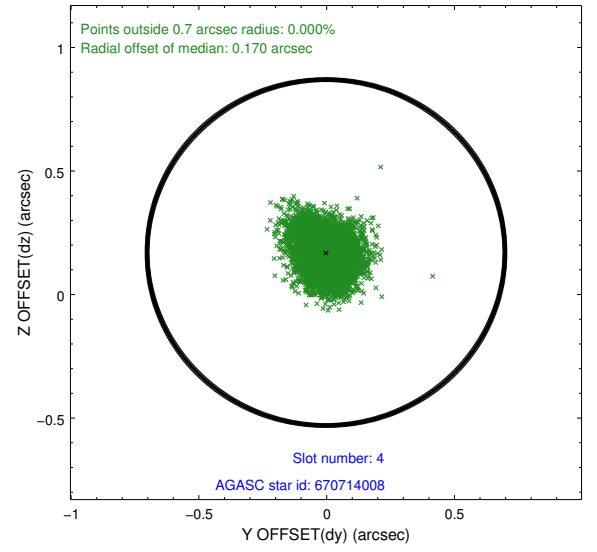
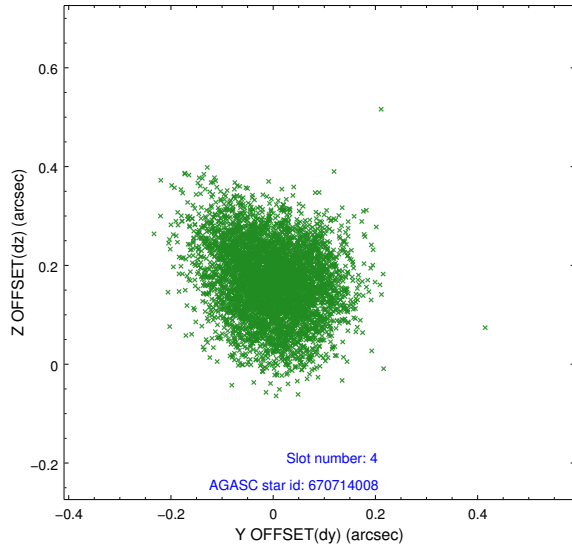
slot	status	used	id	mag	n_pts	med_dy	med_dz	dr1	dr2	ra	dec	mean_y	mean_z
0	FID		ACIS-I-1	7.06	2472	-0.046	0.004	0.021	0.044	0.000000	0.000000	917.26	-843.24
1	FID		ACIS-I-4	7.00	2472	0.257	0.044	0.015	0.024	0.000000	0.000000	2137.80	1056.40
2	FID		ACIS-I-5	7.04	2472	-0.311	0.023	0.018	0.028	0.000000	0.000000	-1830.42	1054.65
3	GUIDE	used	670713328	7.55	4944	-0.092	-0.223	0.078	0.120	280.824681	-3.187771	335.63	33.29
4	GUIDE	used	670714008	9.03	4941	-0.003	0.170	0.109	0.174	281.129237	-3.153193	550.96	-1046.95
5	GUIDE	used	670714176	8.56	4929	0.318	-0.182	0.069	0.114	280.233424	-3.684215	-1623.69	2000.02
6	GUIDE	used	670830264	8.74	4925	-0.080	0.288	0.089	0.142	281.361536	-3.231556	338.91	-1902.01
7	GUIDE	used	671224168	7.34	4943	-0.147	-0.056	0.060	0.102	280.307659	-3.817213	-2078.81	1693.88

2.4 Star Slots

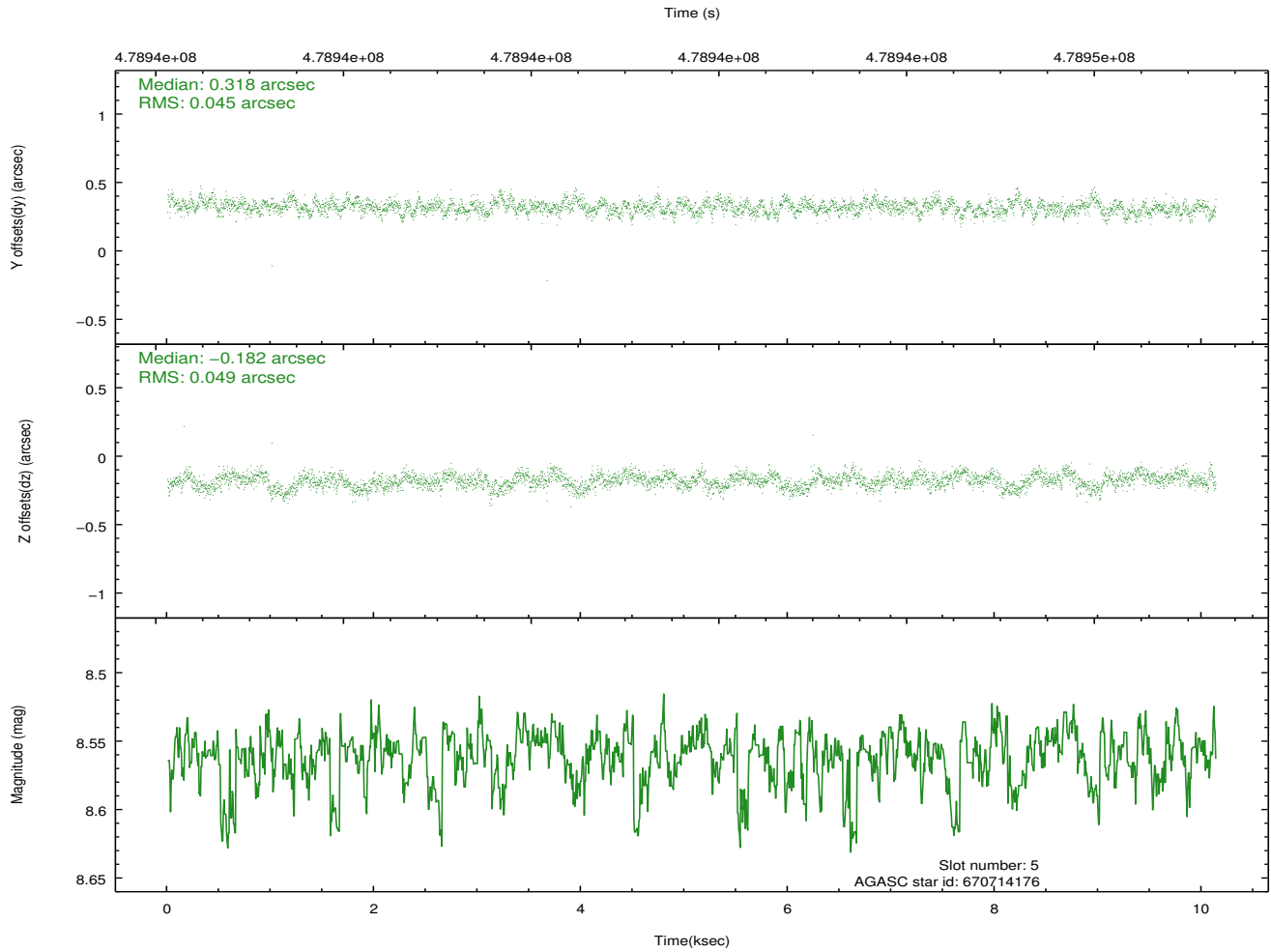
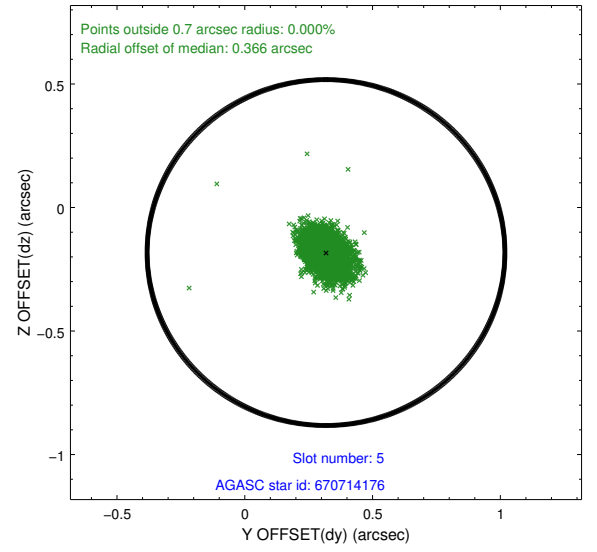
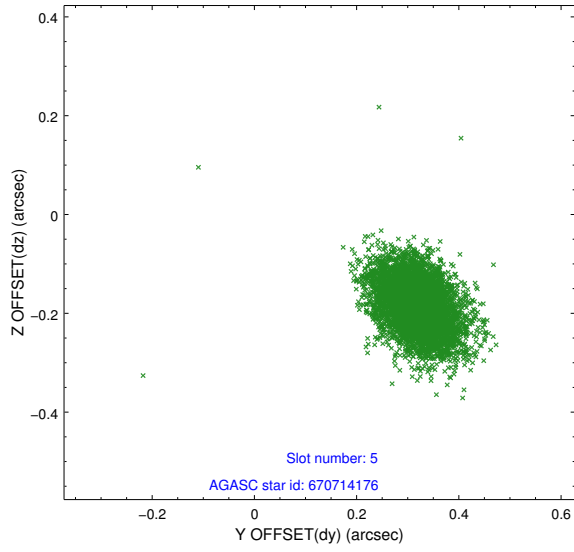
2.4.1 Slot 3



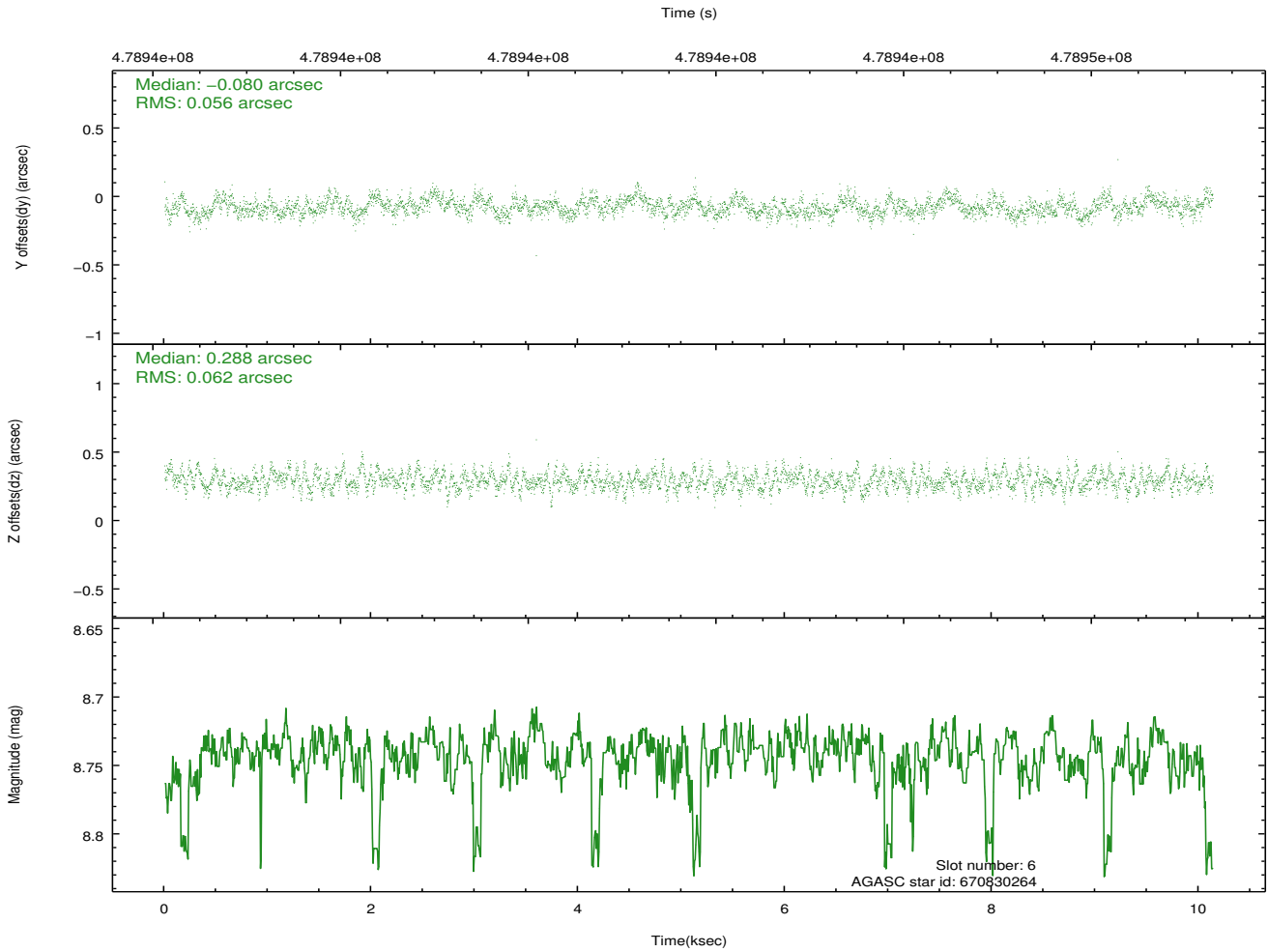
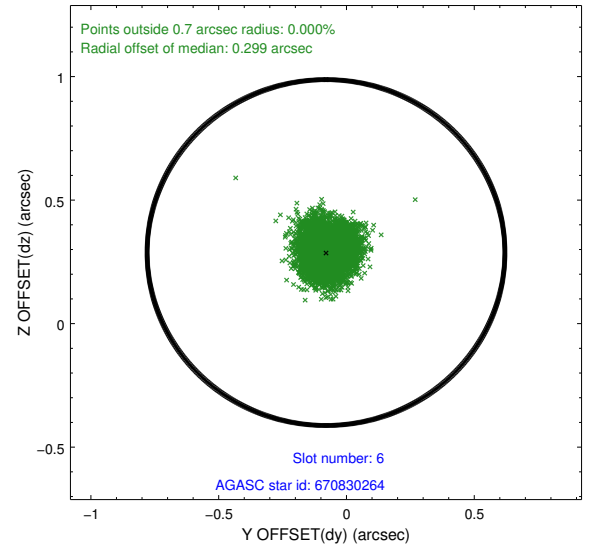
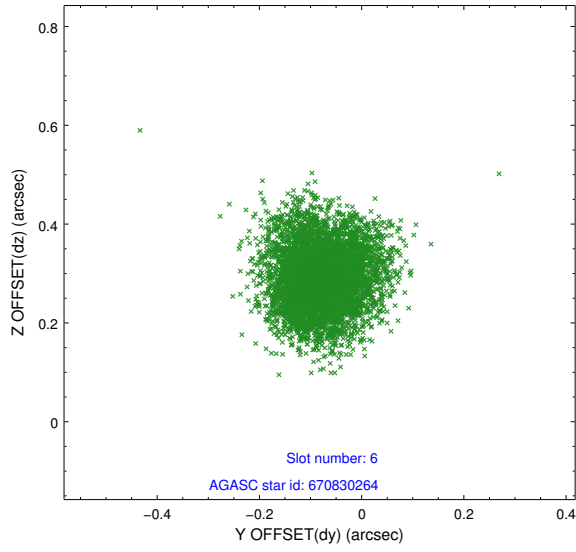
2.4.2 Slot 4



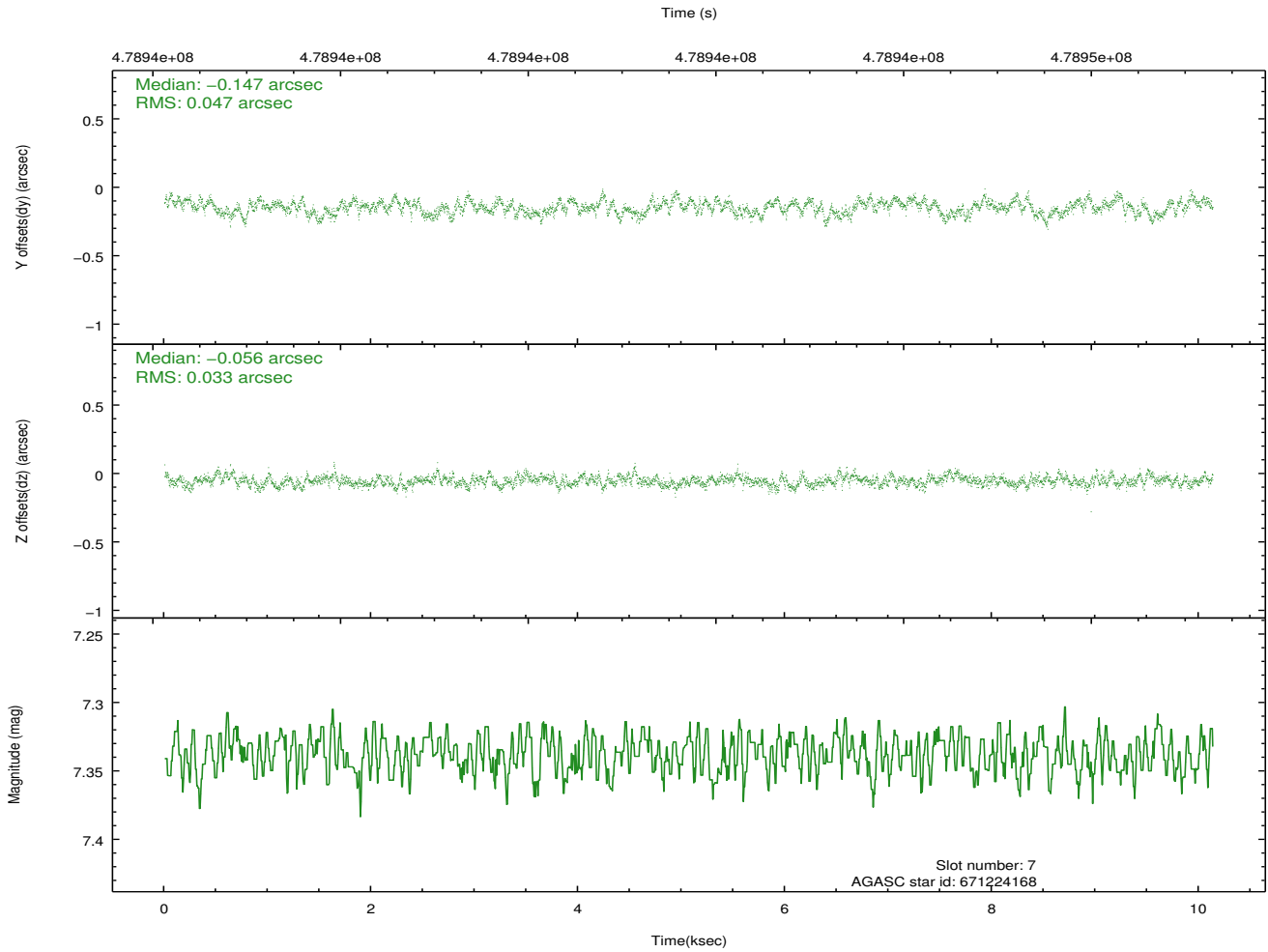
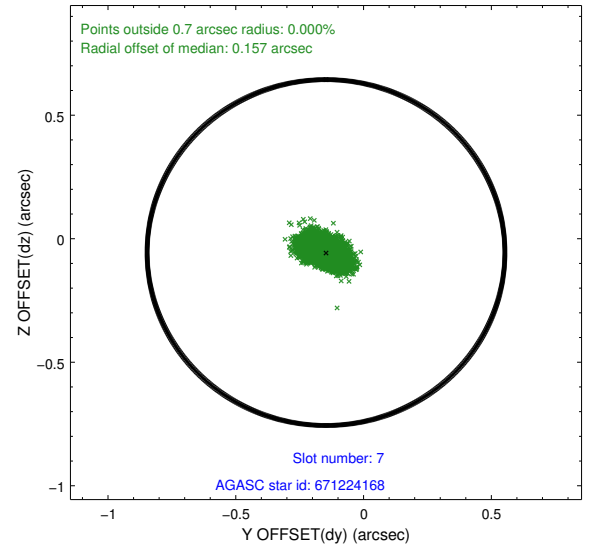
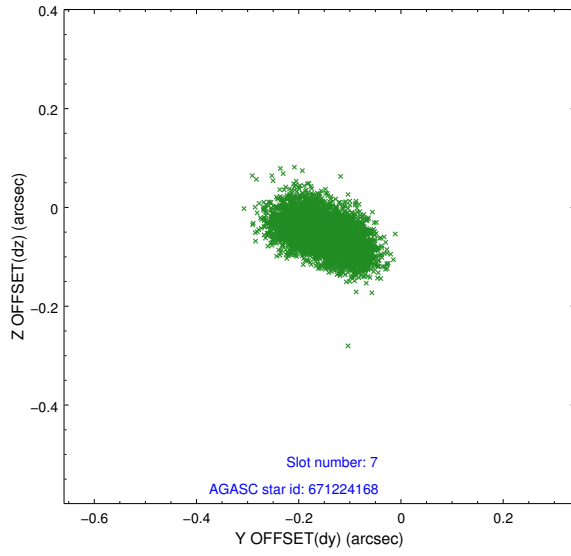
2.4.3 Slot 5



2.4.4 Slot 6

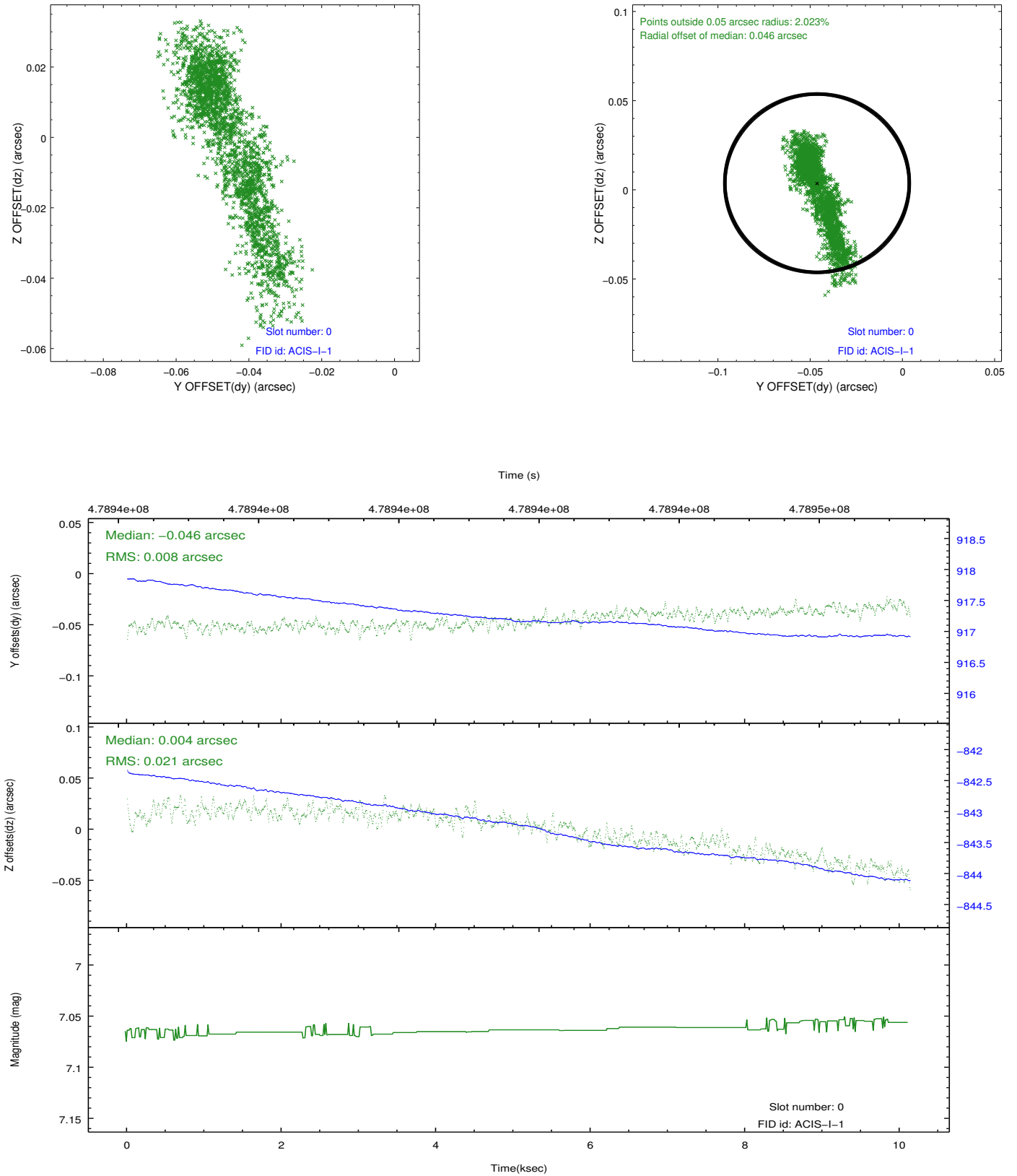


2.4.5 Slot 7

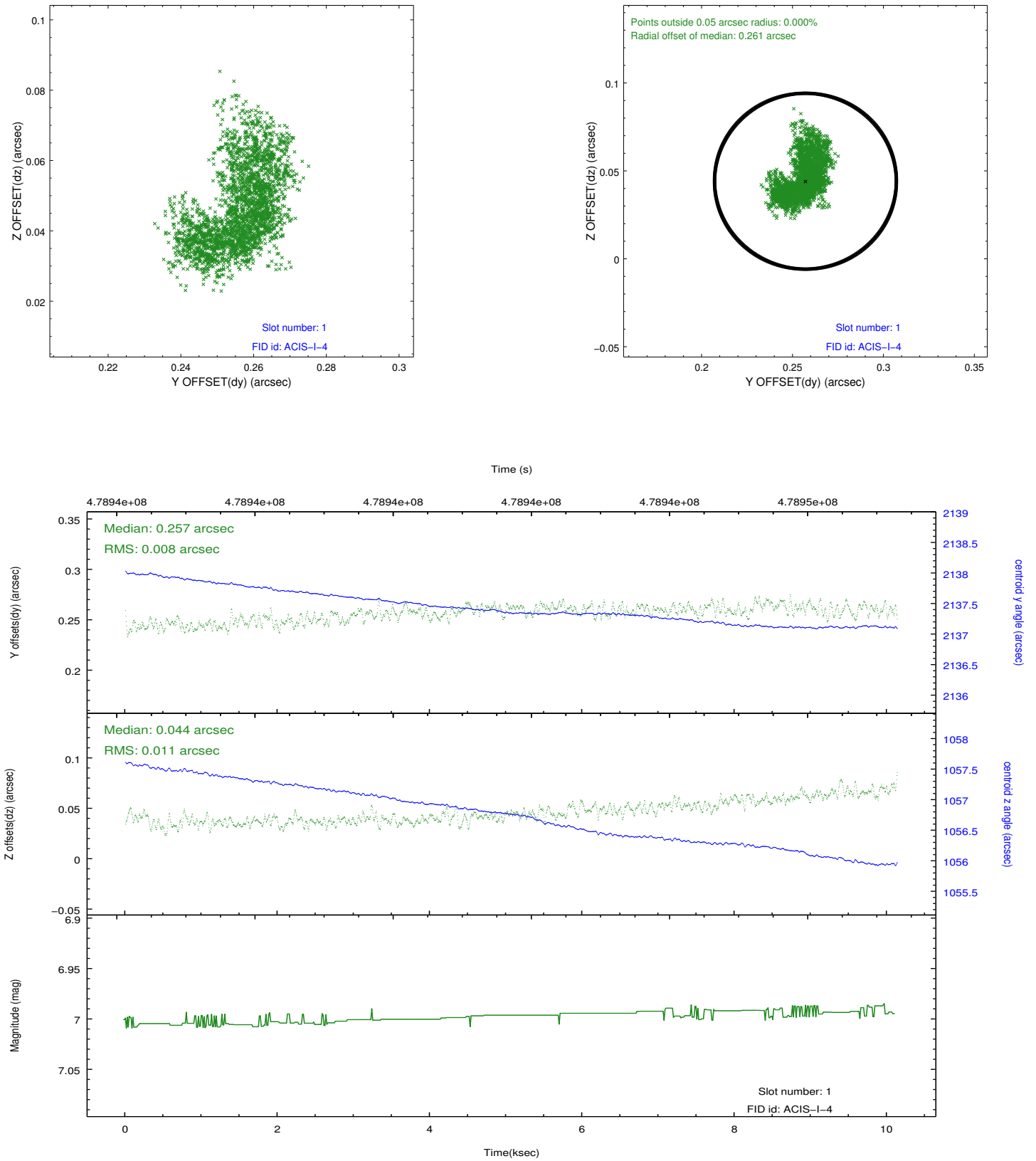


2.5 FID Slots

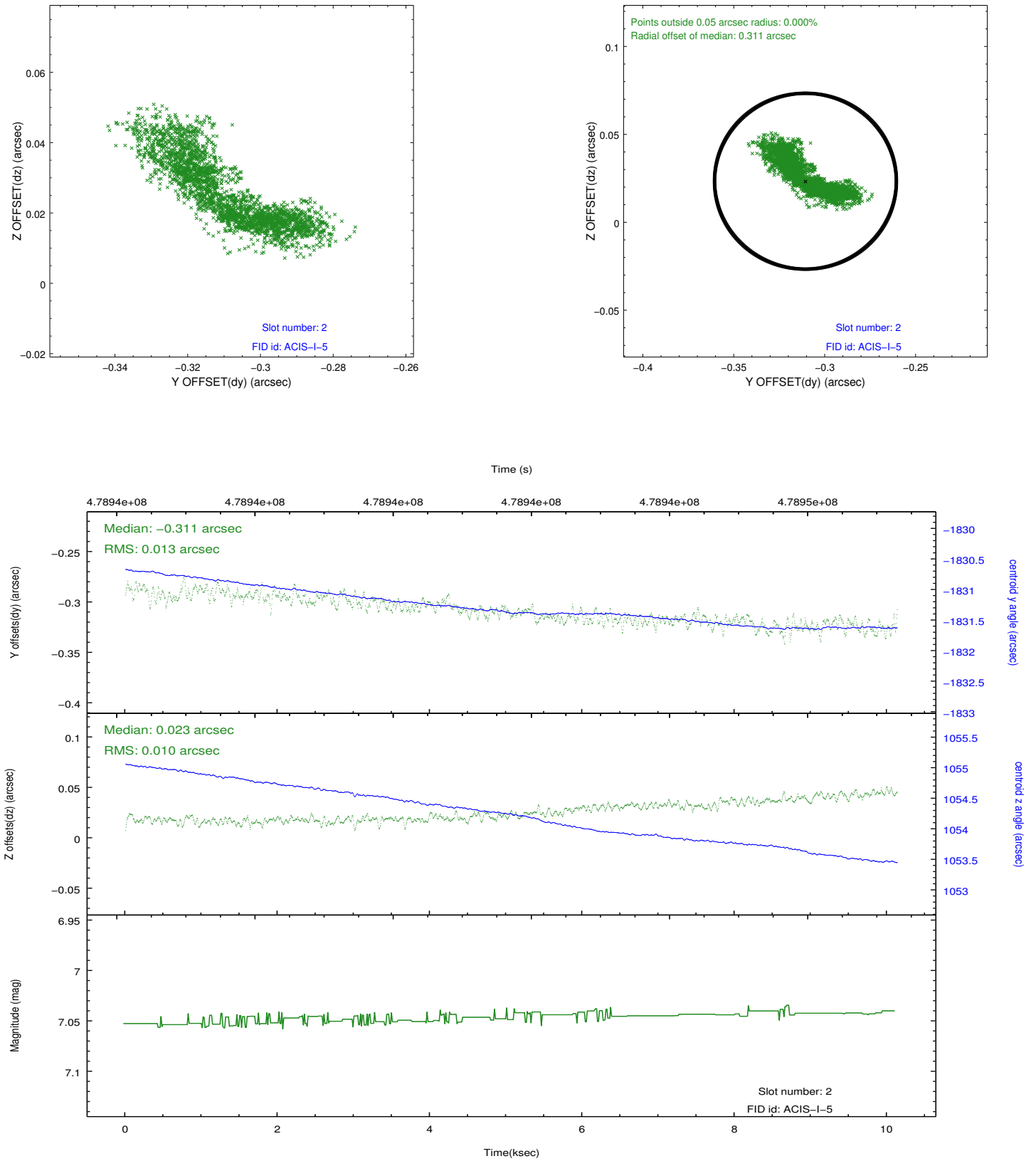
2.5.1 Slot 0



2.5.2 Slot 1



2.5.3 Slot 2



A Summary

A.1 Status

V&V Scientist	Jen Lauer
V&V Date (YYYY-MM-DD)	2014.12.09
V&V Edition	1
V&V Disposition and Status	OK
V&V Charge Time	10.065640089929

A.2 Comments

These data have been reprocessed with new aspect alignment calibration files that correct small mean offsets (up to 0.4 arcsecs) and improve overall astrometric accuracy. The new calibration was determined using data from the time period being reprocessed and was performed using cross-correlation of X-ray sources with radio and optical counterparts.