

V&V Reference Report

L2 ASCDS Version : 8.4.5

Observation 150 - L2 Version 6
Chandra X-Ray Center

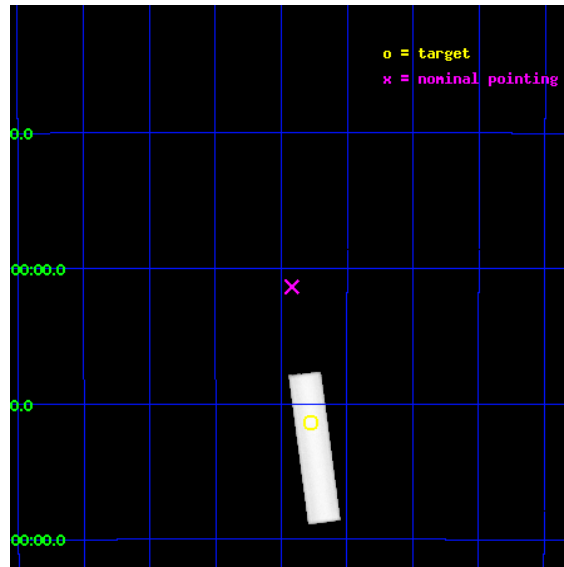
L2 Processing Date : Aug 22 2012

Contents

1	Front	2
2	OBI	3
2.1	OBI	3
2.1.1	Images	3
2.1.2	Parameters	4
2.1.3	Events	4
2.2	Compared Parameters	5
2.3	Aspect	6
2.4	Star Slots	9
2.4.1	Slot 3	9
2.4.2	Slot 4	10
2.4.3	Slot 5	11
2.4.4	Slot 6	12
2.5	FID Slots	13
2.5.1	Slot 0	13
2.5.2	Slot 1	14
2.5.3	Slot 2	15
A	Summary	16
A.1	Status	16
A.2	Comments	16

1 Front

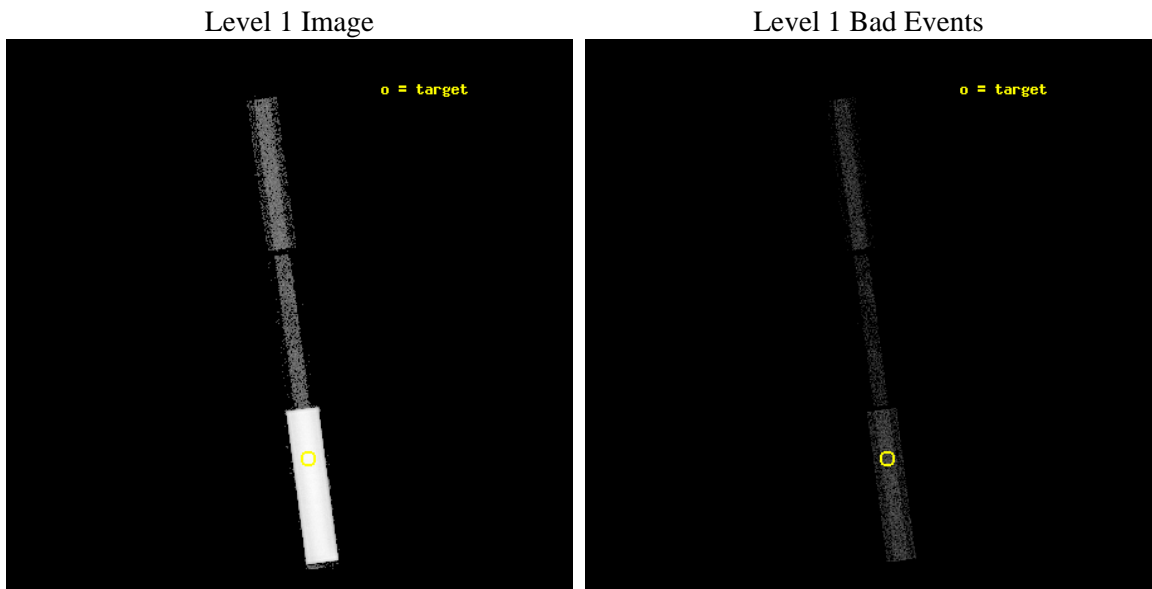
seq_num	590018	Sequence number
obs_id	150	Observation id
title	HRC RESPONSE TO CONTINUUM SOURCE.	Proposal title
observer	Dr. CXC Calibration	Principal investigator
object	G21.5-0.9 [HRC-S, Offsets=-30,0,0 +Y MCP]	Source name
ra_targ	278.389583	Observer's specified target RA [deg]
dec_targ	-10.568528	Observer's specified target Dec [deg]
ra_nom	278.4594195951	Nominal RA [deg]
dec_nom	-10.068302716749	Nominal Dec [deg]
roll_nom	82.298801260783	Nominal Roll [deg]
revision	6	Processing version of data
ontime	10413.231629908	[s]
livetime	10322.261961897	Ontime multiplied by DTCOR
l2events	675362	Number of level 2 events



2 OBI

2.1 OBI

2.1.1 Images



2.1.2 Parameters

obi_num	0	Obi number	sched_exp_time	10000.000000	[s] Scheduled observation exposure time
ascdsver	8.4.5	Processing system revision	ontime	10413.231629908	[s]
caldsver	4.5.1.1	 	l1events	844107	Number of level 1 events
date	2012-08-22T19:23:36	Date and time of file creation			
revision	5	Processing version of data			

2.1.3 Events

Level 1 Events

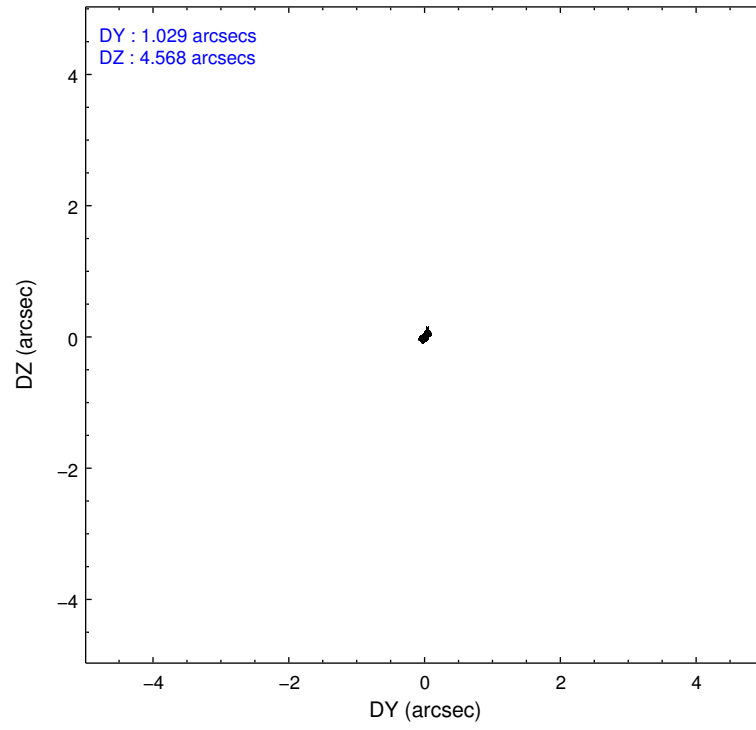
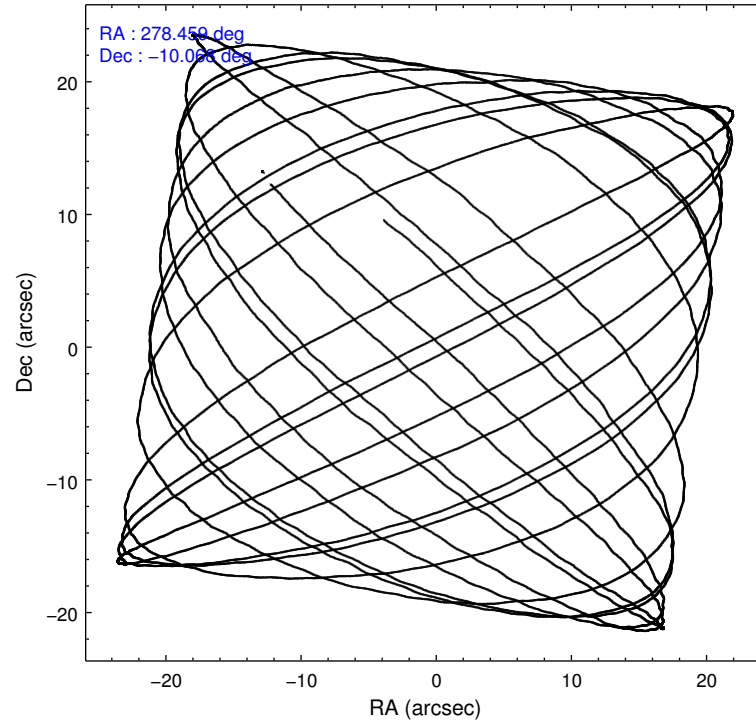
	segment 1	segment 2	segment 3
level 1 events	817758	2905	23444
rejected events	9076	2701	23444
rejected %	1%	92%	100%

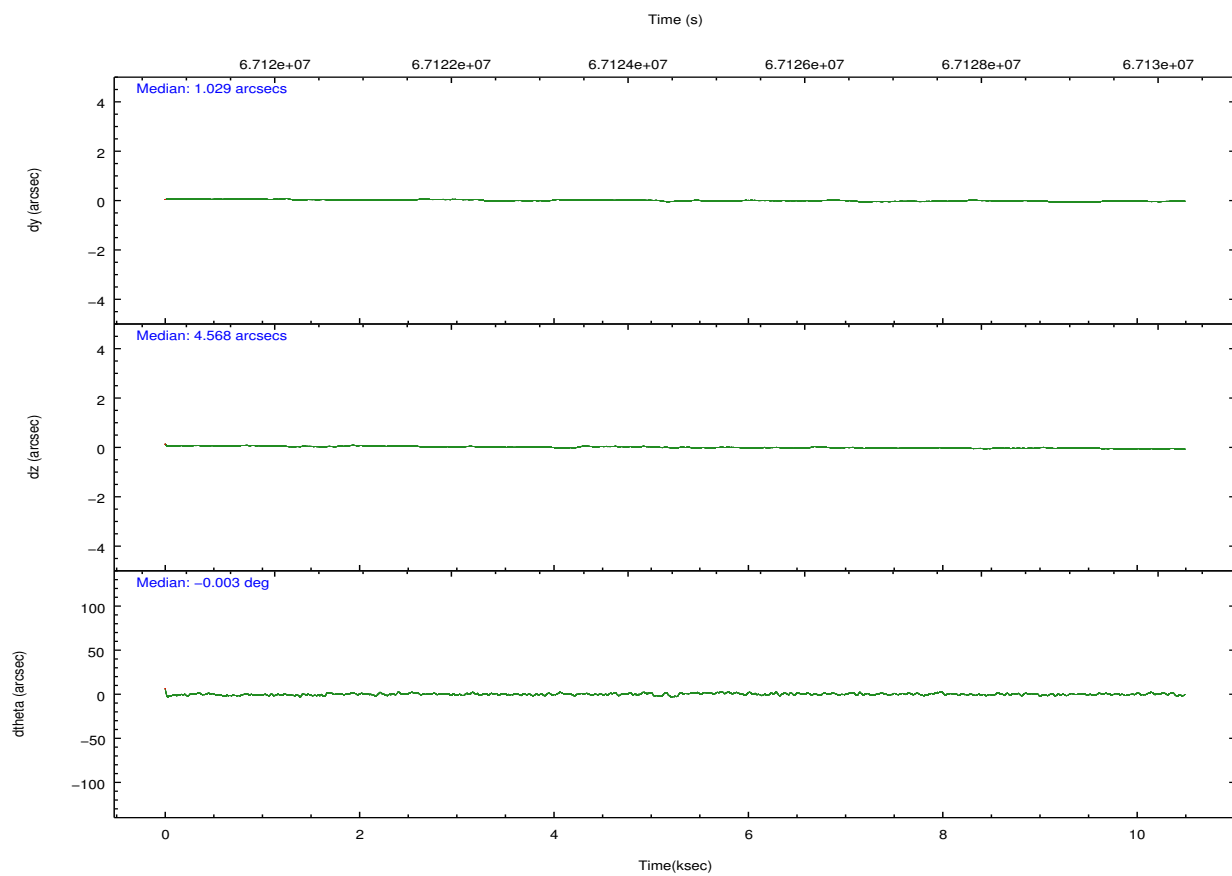
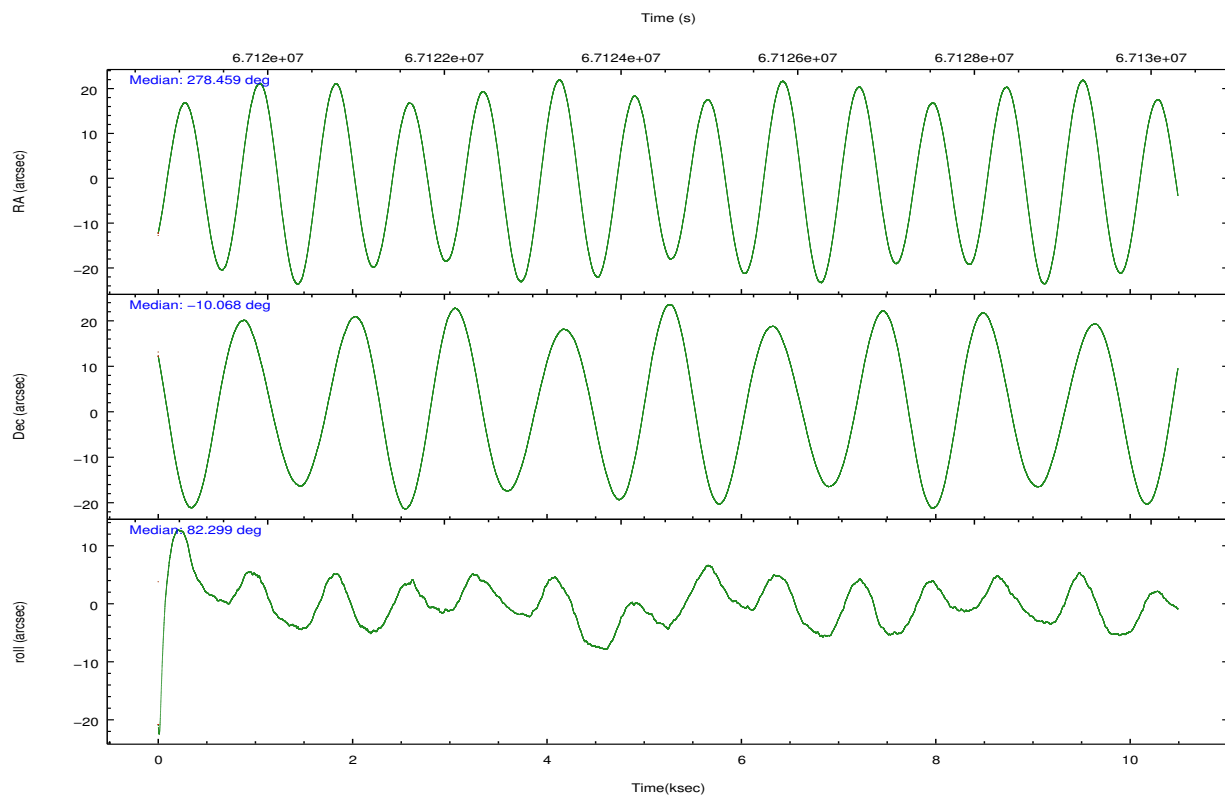
2.2 Compared Parameters

Parameter	Planned	Actual
Instrument	HRC	HRC
Detector	HRC-S	HRC-S
Grating	NONE	NONE
Data mode	OBSERVING	OBSERVING
Observation mode	POINTING	POINTING
[deg] Pointing RA	278.471445	278.4594195950953
[deg] Pointing Dec	-10.094393	-10.0683027167492
[deg] Pointing Roll	82.233613	82.2988012607828
[mm] SIM focus pos	-1.429586	-1.428180813131781
[mm] SIM defocus	0.1037507710433287	0.1051558262725154
[mm] SIM translation stage pos	250.455976	250.466033080201
[mm] SIM translation stage offset	0	-0.01005468664627074
[s] Observation start time (MET)	67119780.184000	67119099.345047
Observation start date	2000-02-16T20:21:56	2000-02-16T20:11:39
[s] Observation end time (MET)	67129780.184000	67129914.120442
Observation end date	2000-02-16T23:08:36	2000-02-16T23:11:54

Parameter	Planned	Actual
Obspar format version number	7	7
Obspar file type	PREDICTED	ACTUAL
Obspar update status	NONE	UPDATED

2.3 Aspect



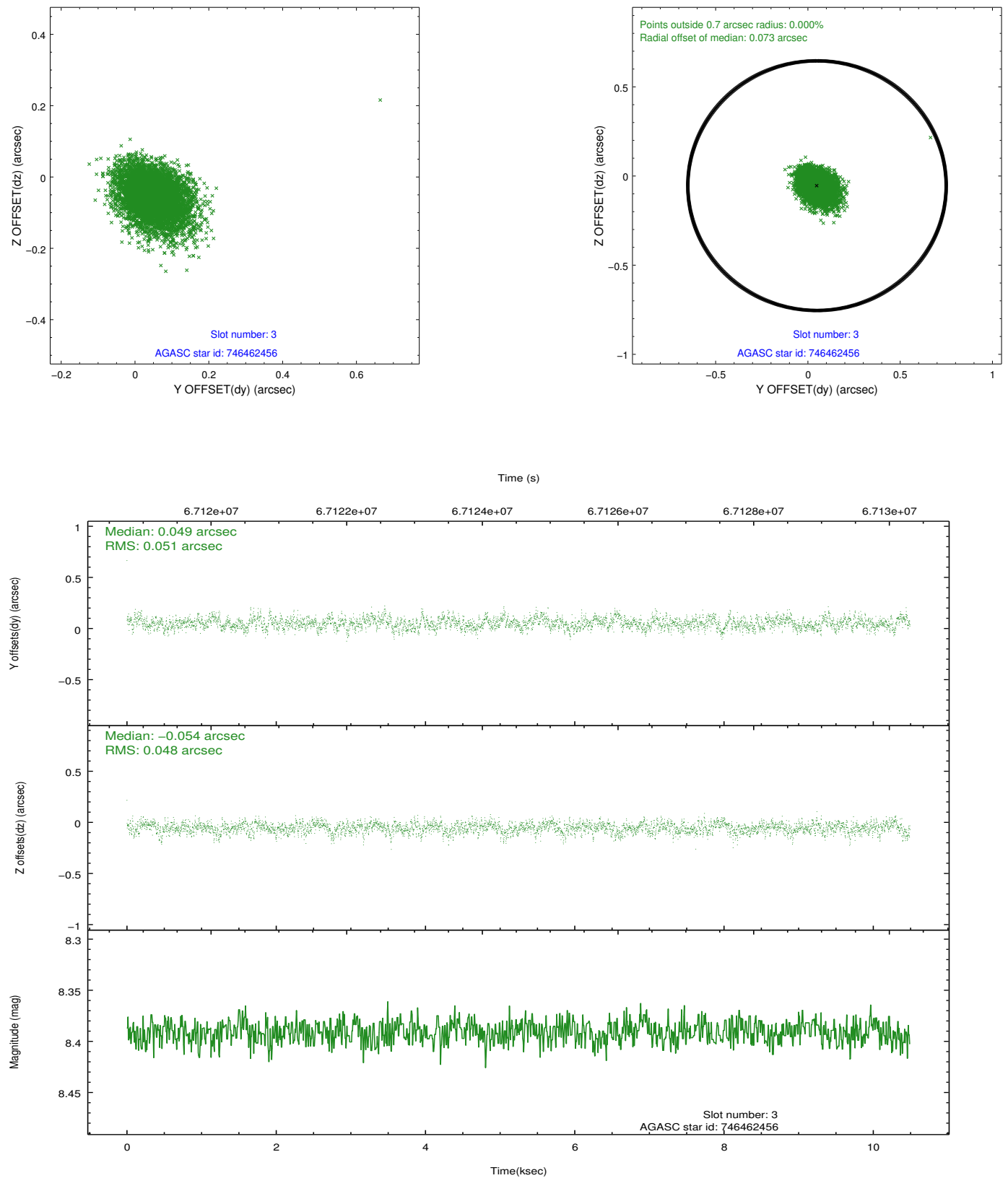


Slot Statistics

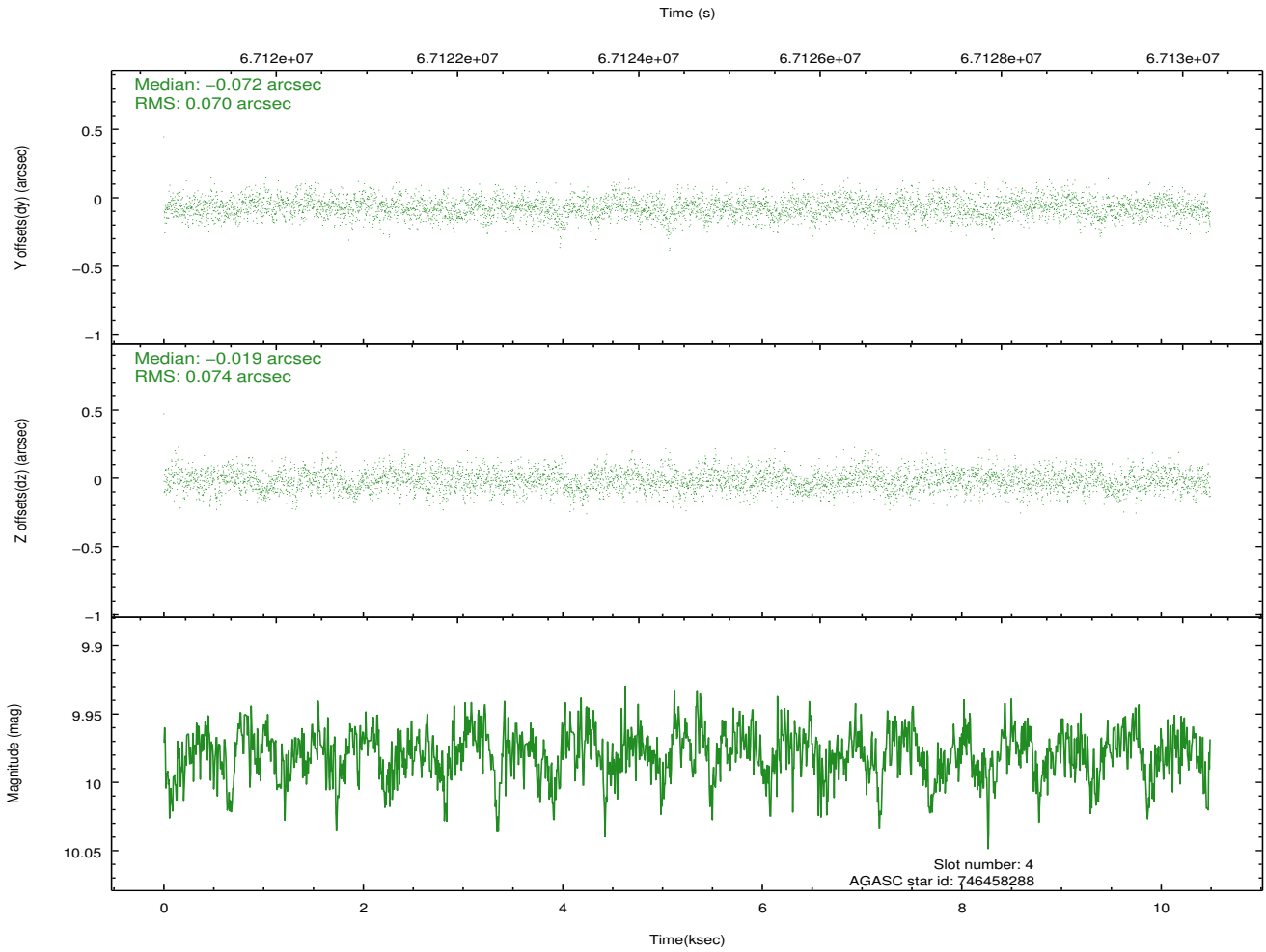
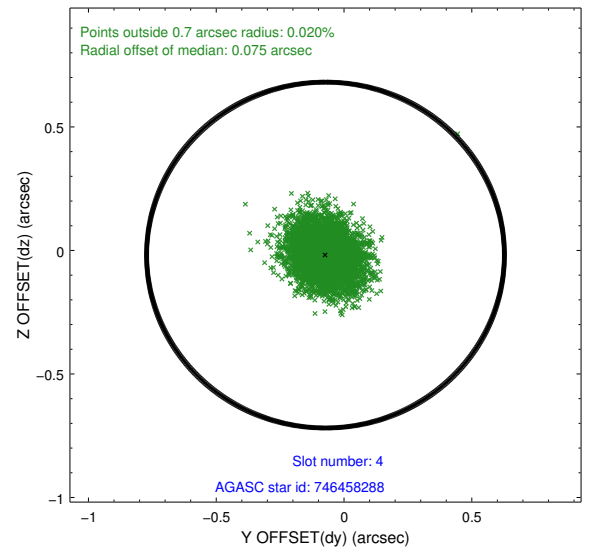
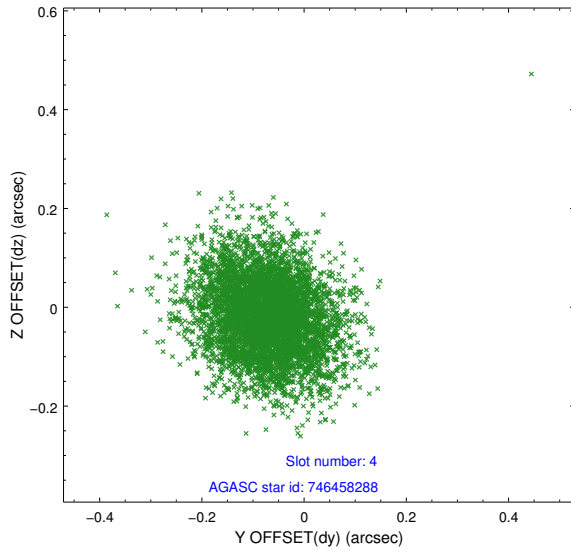
slot	status	id	mag	n_pts	med_dy	med_dz	dr1	dr2	ra	dec	mean_y	mean_z
0	FID	HRC-S-1	6.98	2560	0.124	-0.127	0.006	0.011	0.000000	0.000000	-1155.04	-453.04
1	FID	HRC-S-3	7.01	2560	0.174	-0.072	0.007	0.012	0.000000	0.000000	-1158.15	576.37
2	FID	HRC-S-4	6.95	2560	0.090	-0.098	0.005	0.009	0.000000	0.000000	1242.74	579.28
3	GUIDE	746462456	8.39	5119	0.049	-0.054	0.073	0.121	278.652171	-10.530173	-1467.54	-845.82
4	GUIDE	746458288	9.98	5118	-0.072	-0.019	0.107	0.177	278.591405	-9.671581	1565.85	-216.26
5	GUIDE	746460328	9.80	5113	-0.016	-0.026	0.101	0.166	278.603974	-9.898096	764.48	-370.21
6	GUIDE	746461728	9.77	5115	0.038	0.101	0.105	0.175	278.986921	-10.530755	-1310.64	-2020.15
7	UNUSED		0.00	0	0.000	0.000	0.000	0.000	0.000000	0.000000	0.00	0.00

2.4 Star Slots

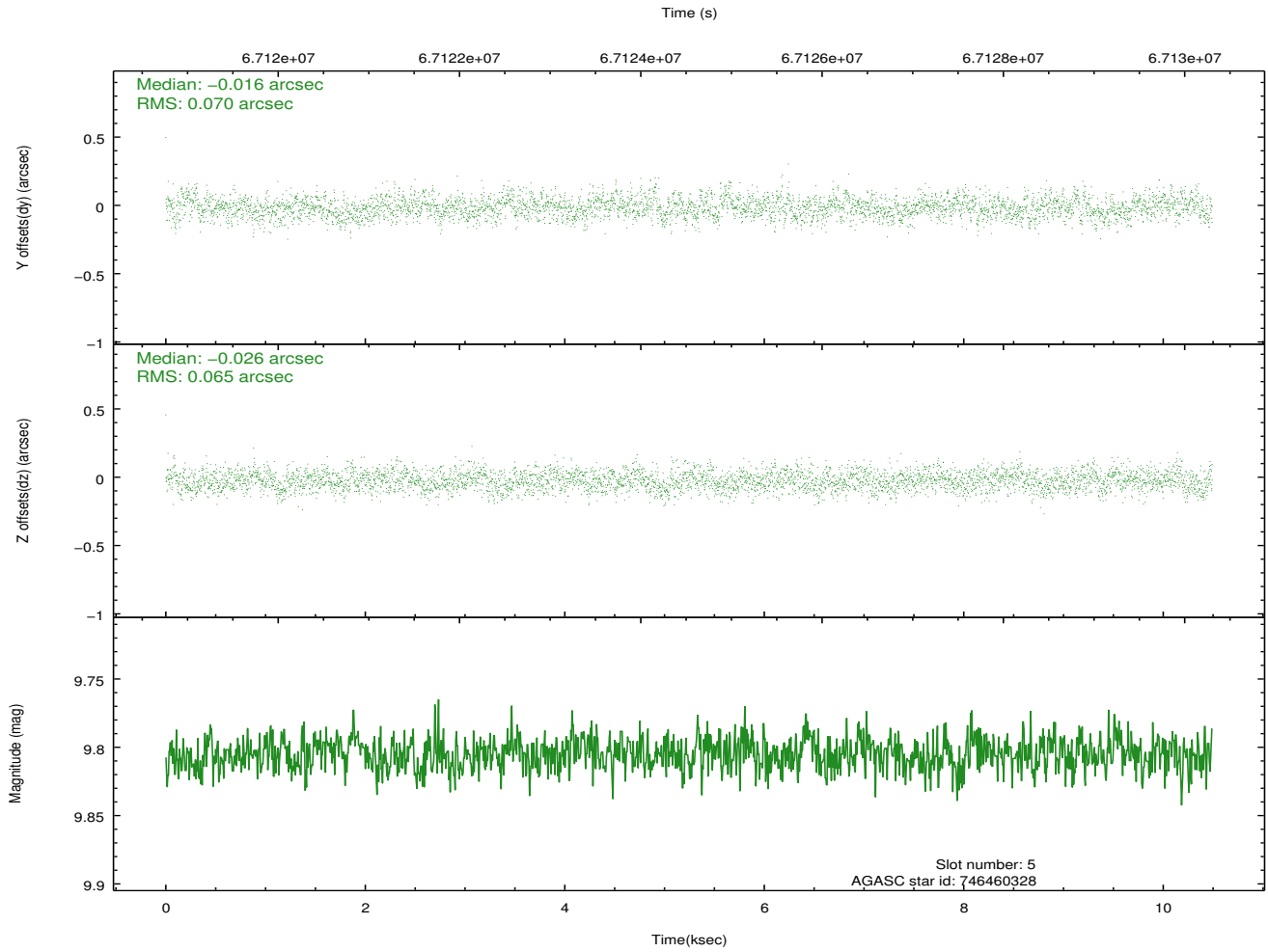
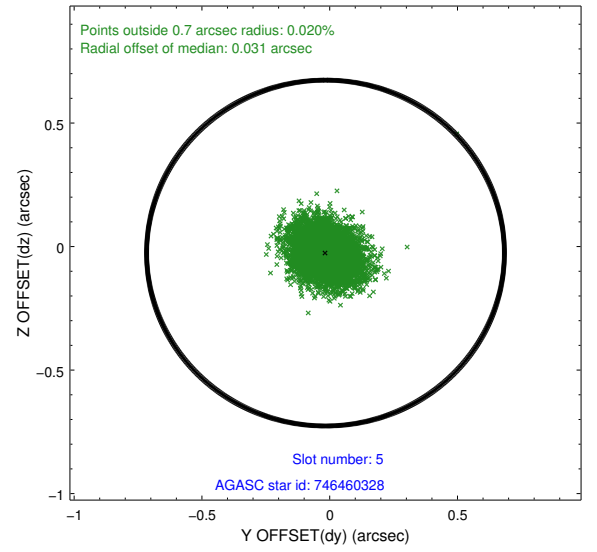
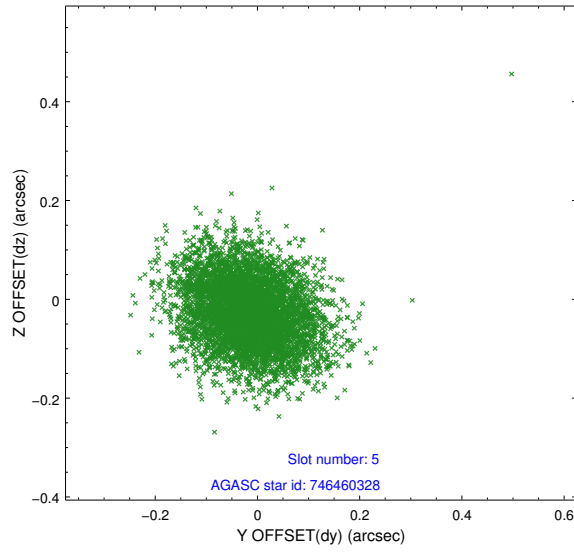
2.4.1 Slot 3



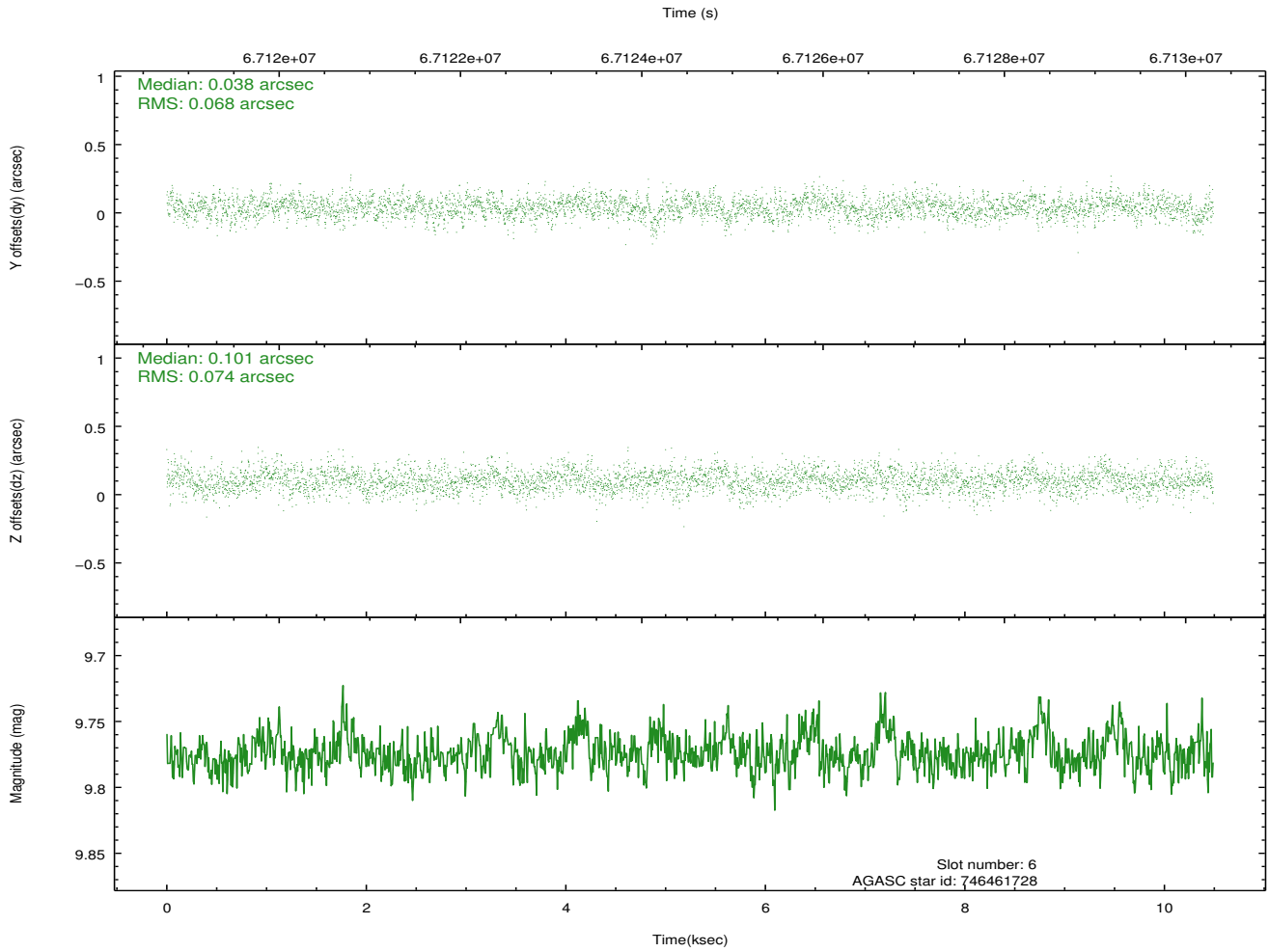
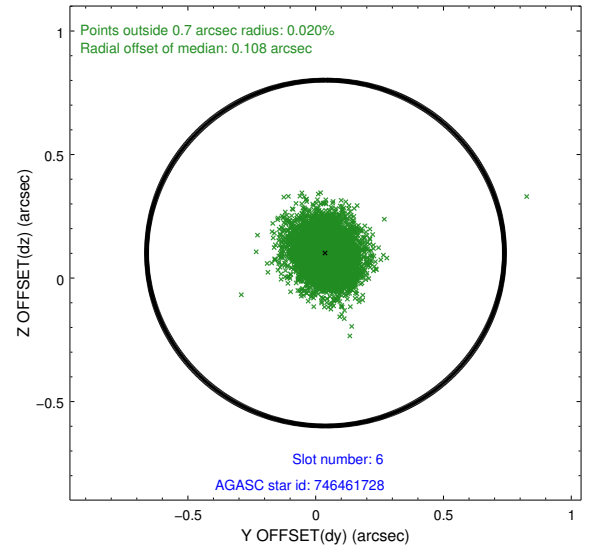
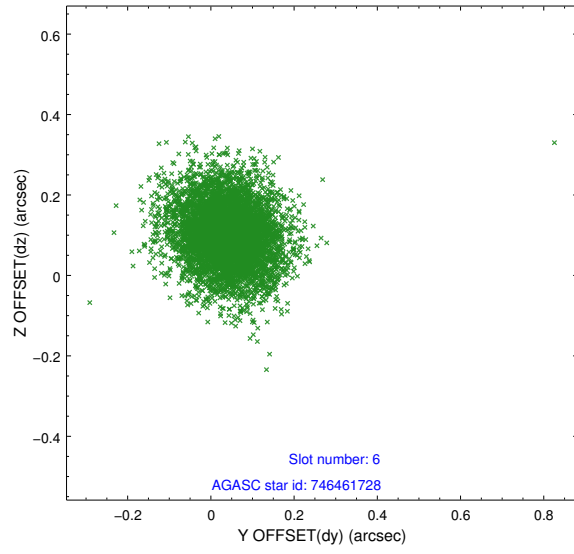
2.4.2 Slot 4



2.4.3 Slot 5

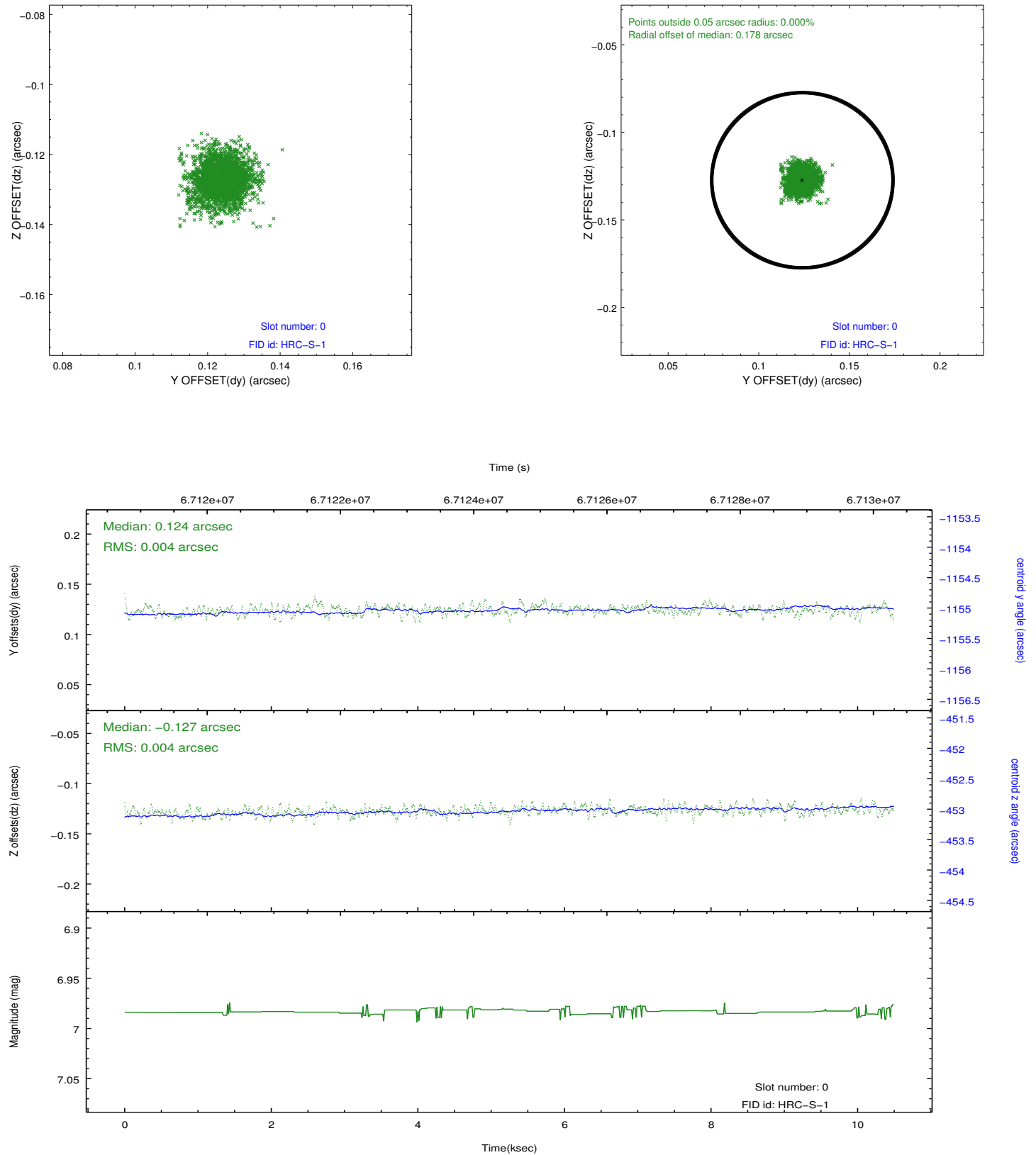


2.4.4 Slot 6

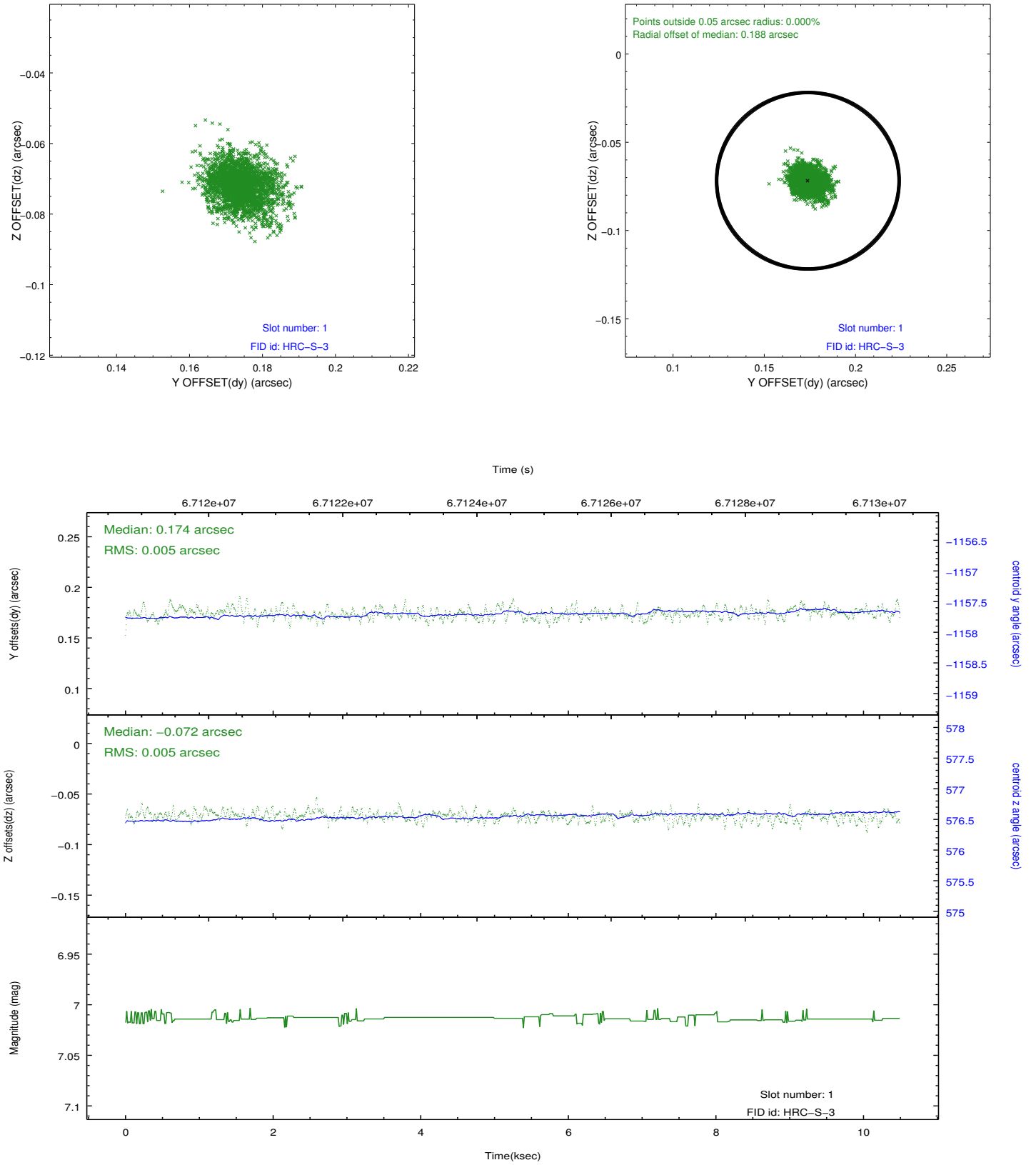


2.5 FID Slots

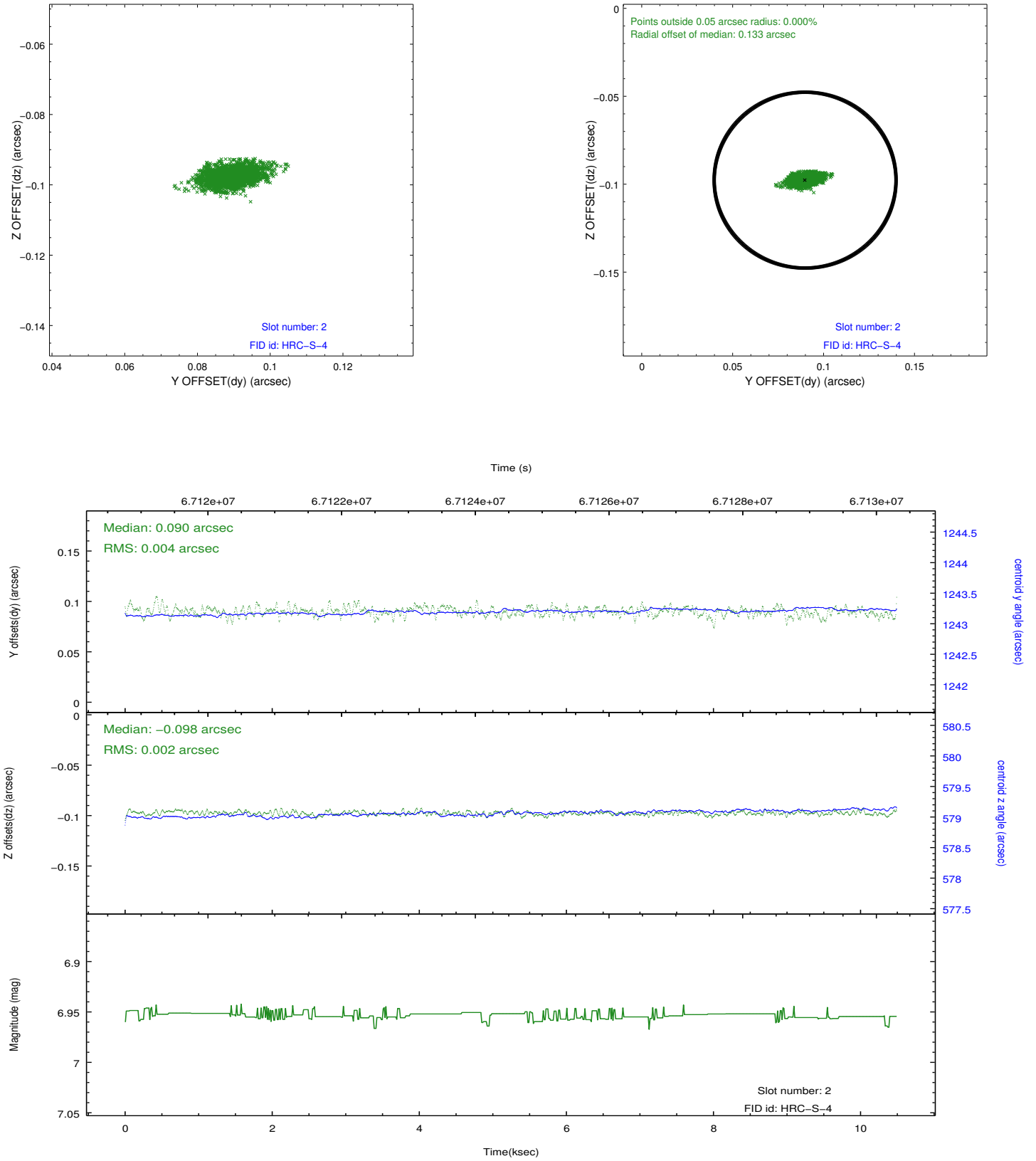
2.5.1 Slot 0



2.5.2 Slot 1



2.5.3 Slot 2



A Summary

A.1 Status

V&V Scientist	Jen Lauer
V&V Date (YYYY-MM-DD)	2012.08.23
V&V Edition	1
V&V Disposition and Status	OK
V&V Charge Time	10.487

A.2 Comments

Charge time for this ObsId remains at previous value of 10.487 ks although with the current processing the charge time would have been 10.41 ksec.