

V&V Reference Report

L2 ASCDS Version : 8.4.3

Observation 14260 - L2 Version 1
Chandra X-Ray Center

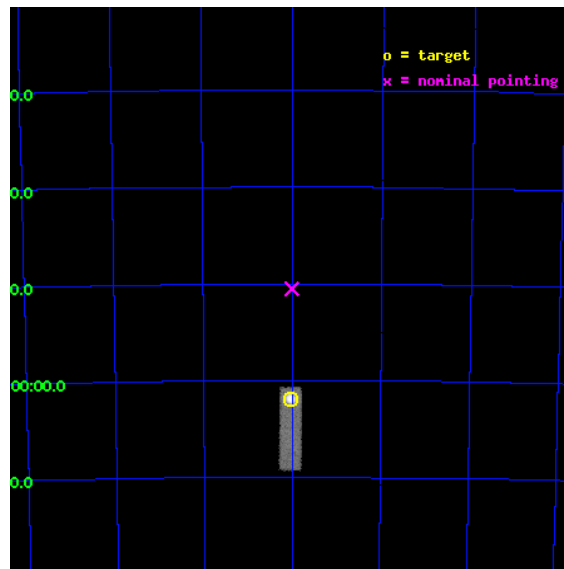
L2 Processing Date : Jan 12 2012

Contents

1	Front	2
2	OBI	3
2.1	OBI	3
2.1.1	Images	3
2.1.2	Bias	3
2.1.3	Parameters	4
2.1.4	Events	4
2.2	Compared Parameters	5
2.3	Aspect	6
2.4	Star Slots	9
2.4.1	Slot 3	9
2.4.2	Slot 4	10
2.4.3	Slot 5	11
2.4.4	Slot 6	12
2.4.5	Slot 7	13
2.5	FID Slots	14
2.5.1	Slot 0	14
2.5.2	Slot 1	15
2.5.3	Slot 2	16
A	Summary	17
A.1	Status	17
A.2	Comments	17

1 Front

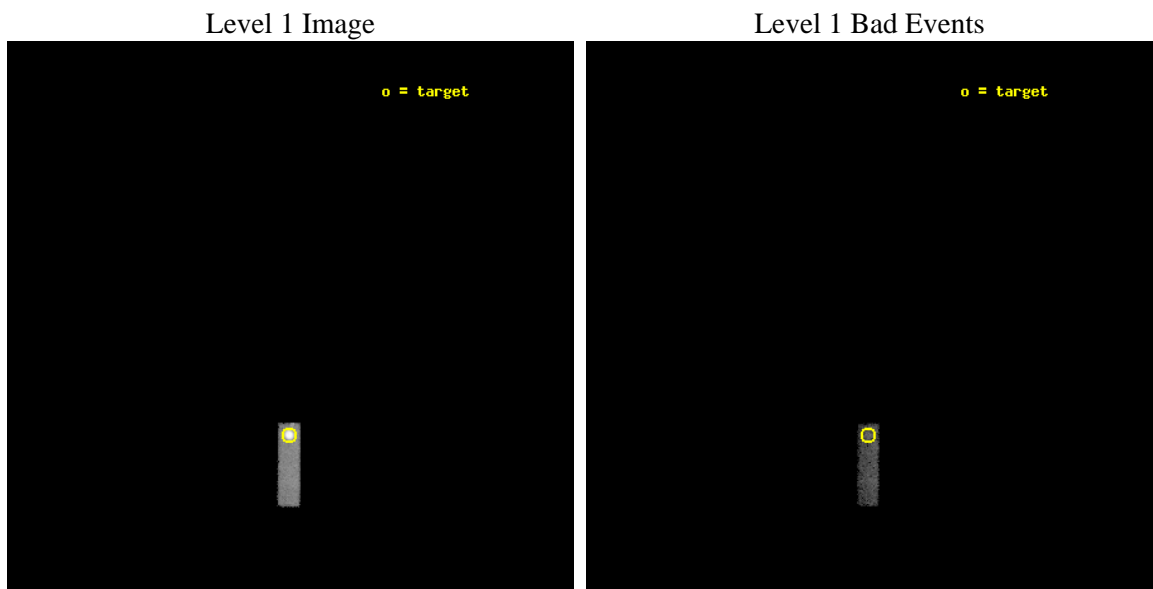
seq_num	590513	Sequence number
obs_id	14260	Observation id
title	AO-13 Calibration Observations of E0102-72	Proposal title
observer	Dr. CXC Calibration	Principal investigator
object	E0102-72 S2,-120,11.50,0,-8.8	Source name
dtcycle	0	
cycle	P	events from which exps? Prim/Second/Both
ra_targ	16.01	Observer's specified target RA [deg]
dec_targ	-72.032028	Observer's specified target Dec [deg]
ra_nom	16.001626401113	Nominal RA [deg]
dec_nom	-71.841949993578	Nominal Dec [deg]
roll_nom	270.45176655768	Nominal Roll [deg]
revision	1	Processing version of data
ontime	10028.000149488	Sum of GTIs [s]
livetime	9538.6665552064	Livetime [s]
ontime5	10028.000149488	Sum of GTIs [s]
l2events	45833	Number of level 2 events



2 OBI

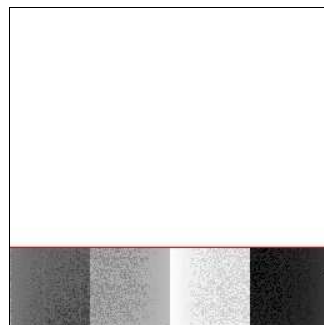
2.1 OBI

2.1.1 Images



2.1.2 Bias

Chip 5



2.1.3 Parameters

obi_num	0	Obi number	sched_exp_time	10000.000000	[s] Scheduled observation exposure time
ascdsver	8.4.3	Processing system revision	ontime	10028.000149488	Sum of GTIs [s]
caldsver	4.4.7	 	ontime5	10028.000149488	Sum of GTIs [s]
date	2012-01-13T03:37:52	Date and time of file creation	l1events	56350	Number of level 1 events
revision	1	Processing version of data			

2.1.4 Events

	ccd 5
level 1 events	56350
rejected events	9989
rejected %	17%

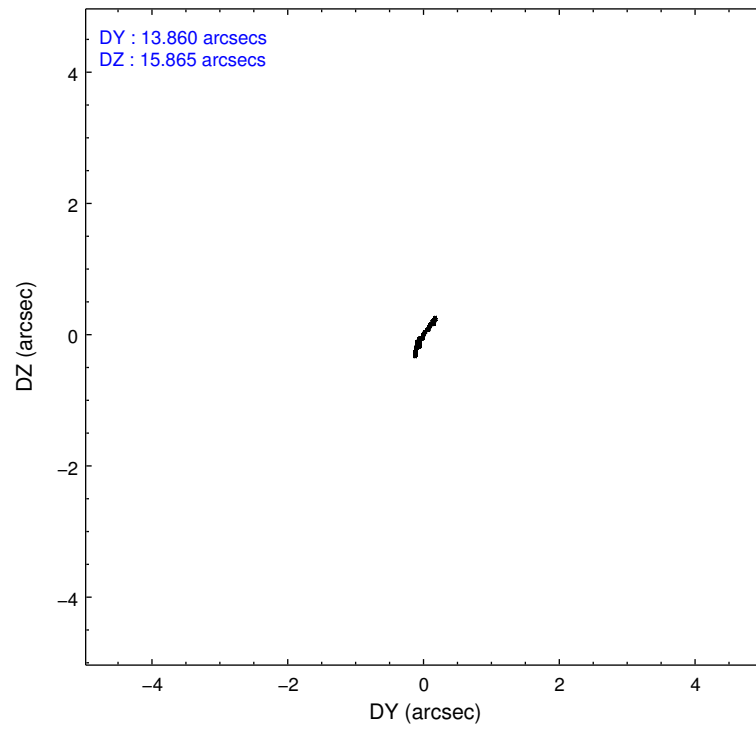
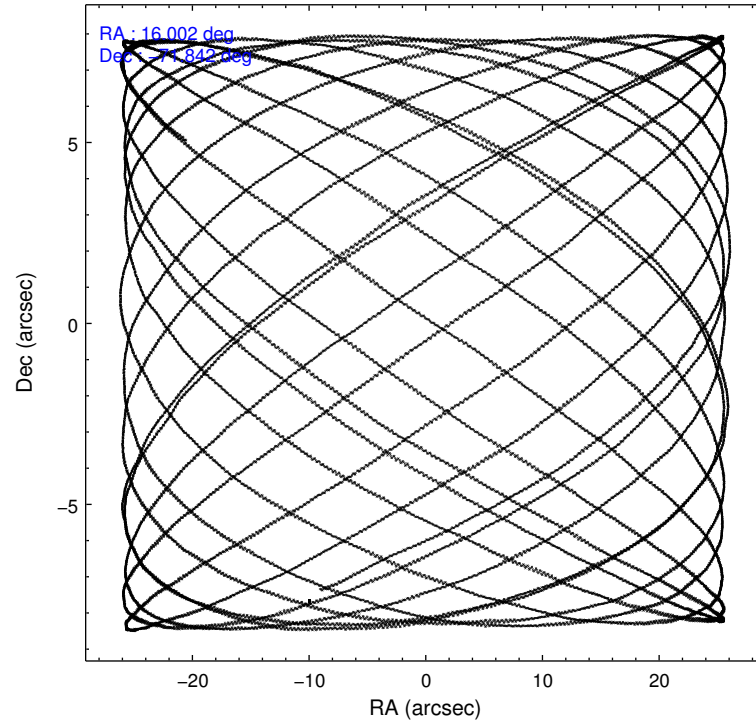
	ccd 5
grade 0 events	16100
	28%
grade 1 events	68
	0%
grade 2 events	12452
	22%
grade 3 events	4570
	8%
grade 4 events	4468
	7%
grade 5 events	2160
	3%
grade 6 events	8776
	15%
grade 7 events	7756
	13%

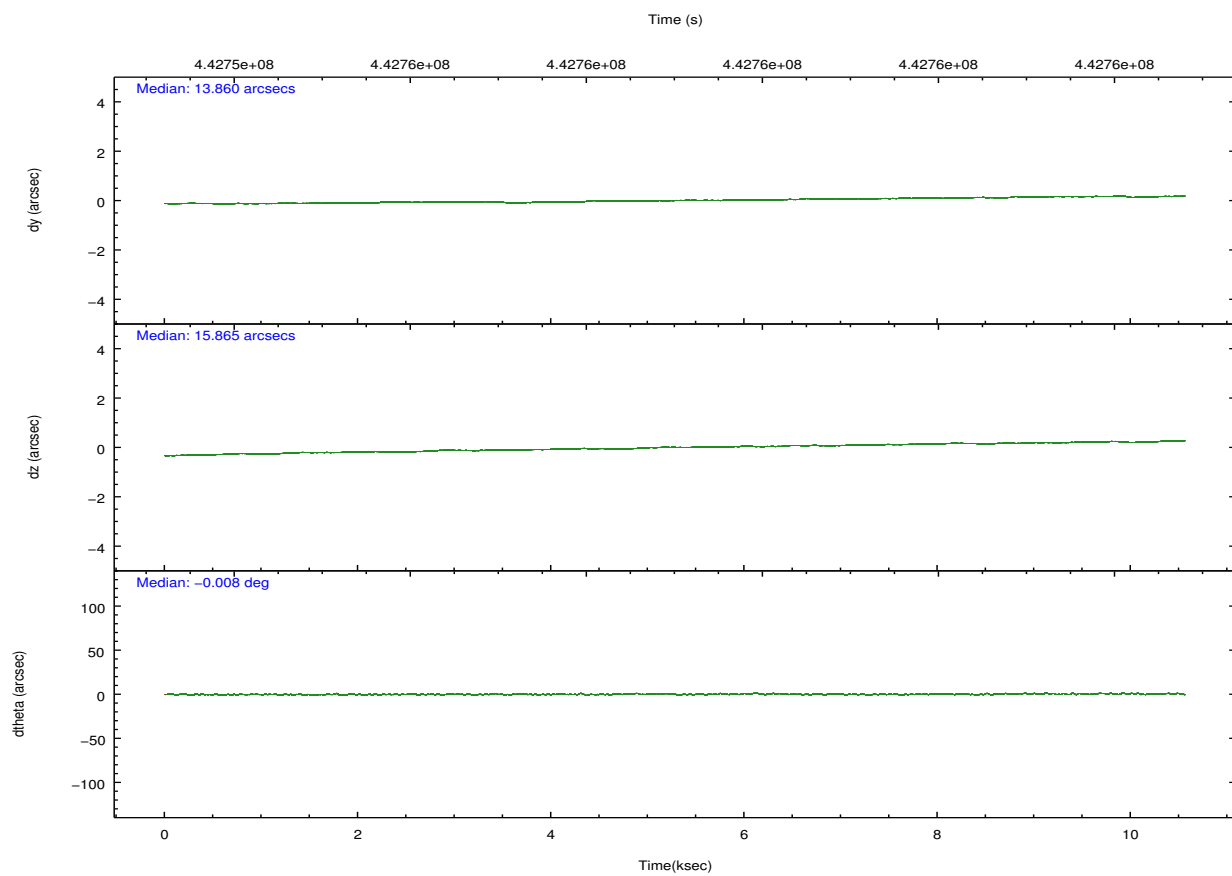
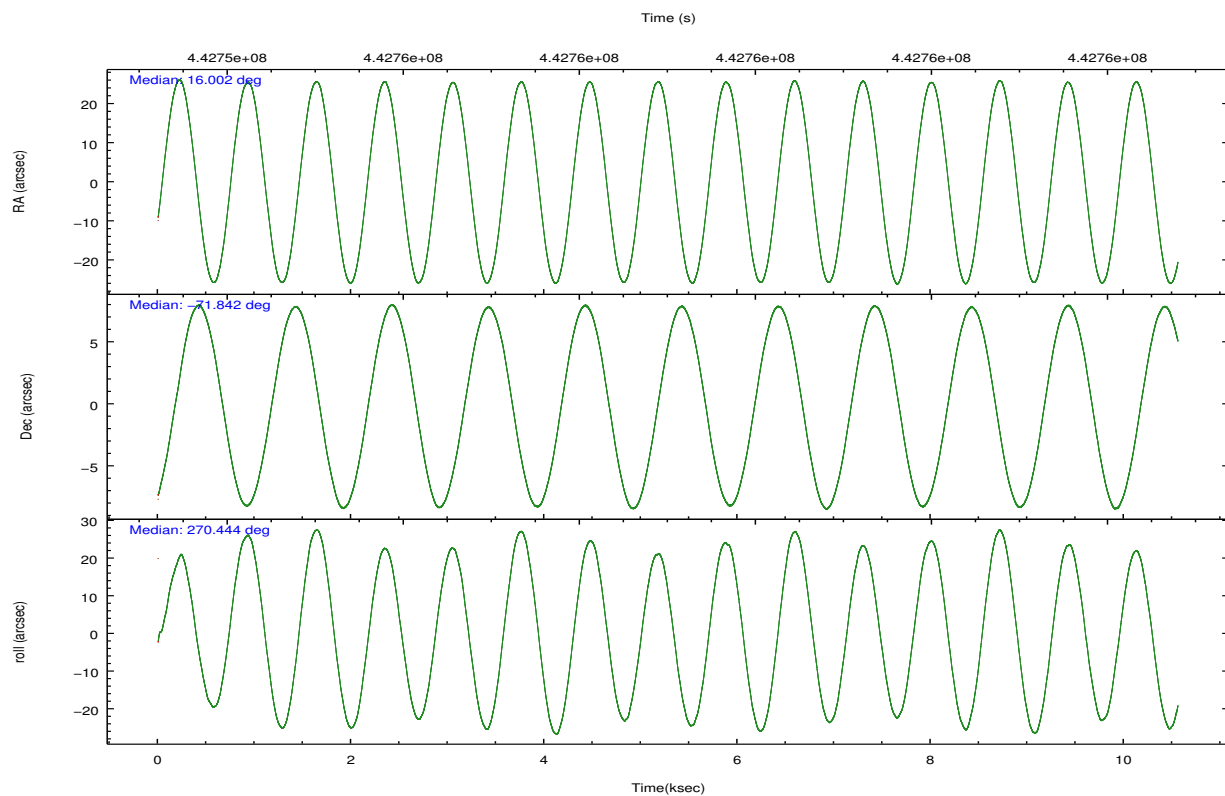
2.2 Compared Parameters

Parameter	Planned	Actual
Instrument	ACIS	ACIS
Detector	ACIS-5	ACIS-5
Grating	NONE	NONE
Data mode	VFAINT	VFAINT
Observation mode	POINTING	POINTING
[deg] Pointing RA	15.956172	16.0016264011131
[deg] Pointing Dec	-71.818616	-71.84194999357777
[deg] Pointing Roll	270.251948	270.451766557684
[s] Window start time (MET)	439084866.184000	439084866.184000
[s] Window stop time (MET)	452131266.184000	452131266.184000
[mm] SIM focus pos	-0.684267	-0.6828225247311905
[mm] SIM defocus	0	0.001444936568705701
[mm] SIM translation stage pos	-181.332523	-181.3324195485072
[mm] SIM translation stage offset	-8.800000000000001	-8.800103034500609
[s] Observation start time (MET)	442754295.184000	442753550.73567
Observation start date	2012-01-12T11:17:09	2012-01-12T11:05:50
[s] Observation end time (MET)	442764295.184000	442765550.92381
Observation end date	2012-01-12T14:03:49	2012-01-12T14:25:50
Read mode	TIMED	TIMED

Parameter	Planned	Actual
Obspar format version number	7	7
Obspar file type	PREDICTED	ACTUAL
Obspar update status	NONE	UPDATED
Number of optional ACIS chips dropped	0	0
On-chip summing requested	N	N
Subarray requested	CUSTOM	1/4
Subarray start row	1	1
Subarray row count	256	256
Alternating exposures requested	N	N
[s] Primary exposure time	0.000000	0.8

2.3 Aspect



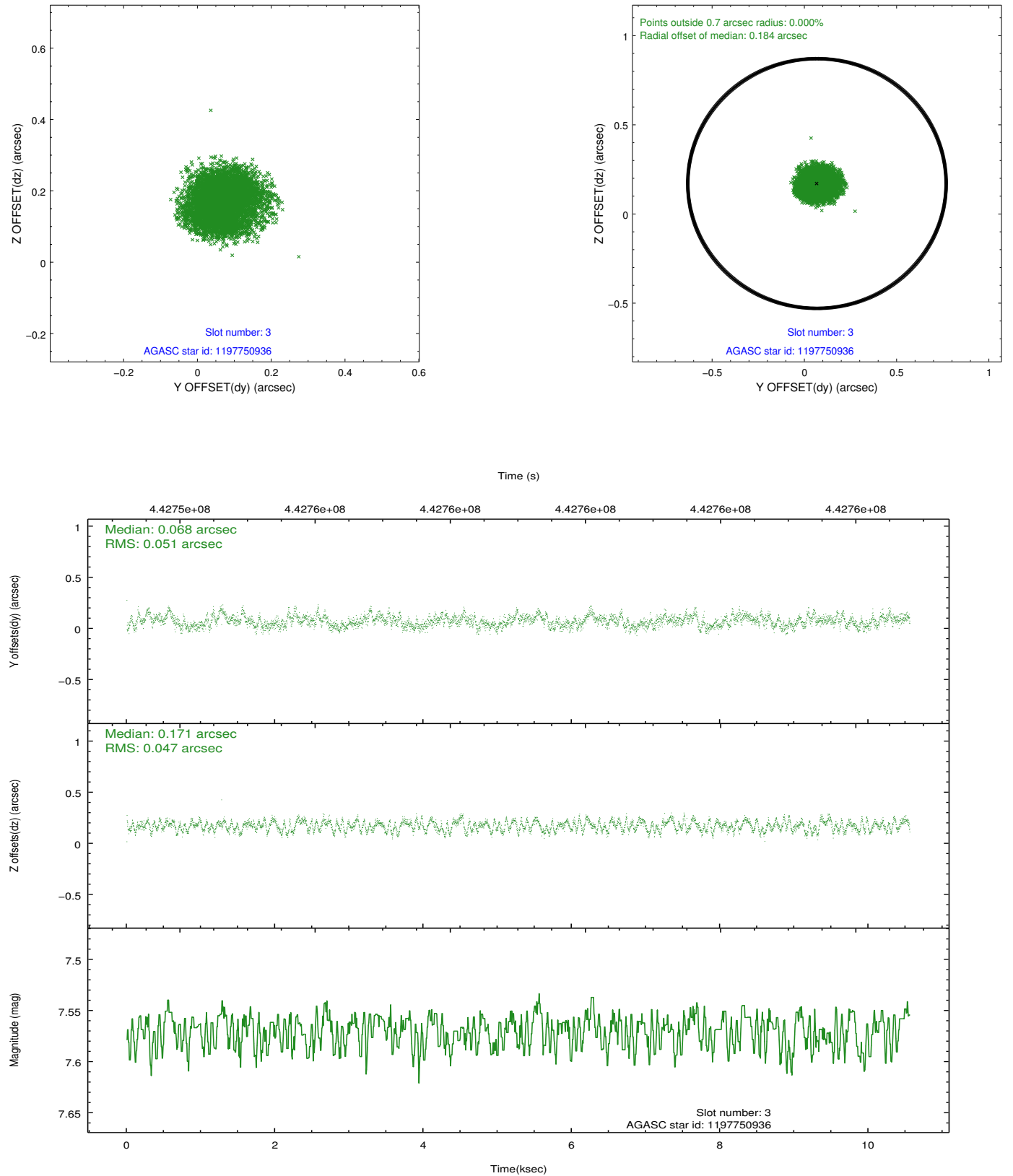


Slot Statistics

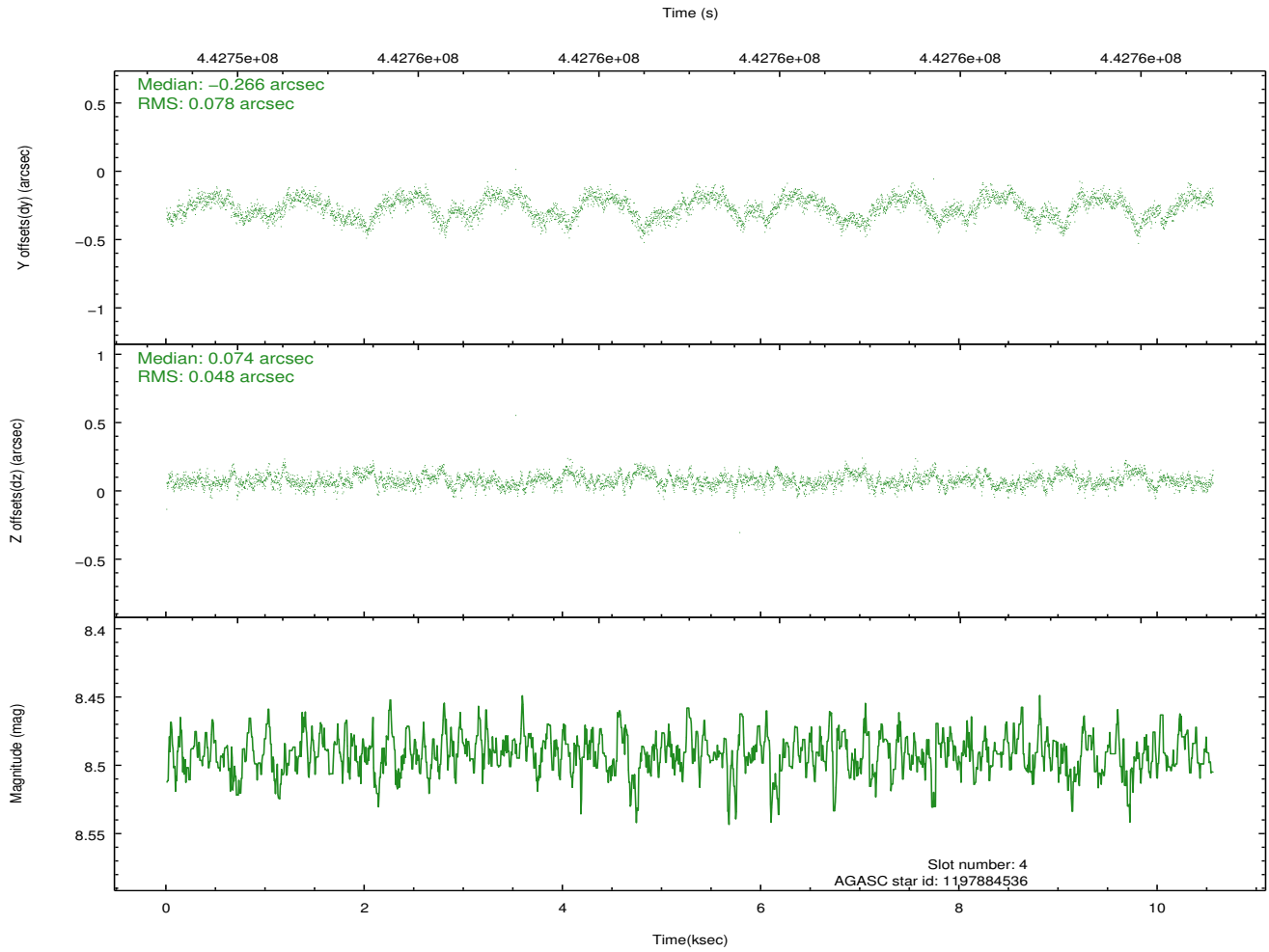
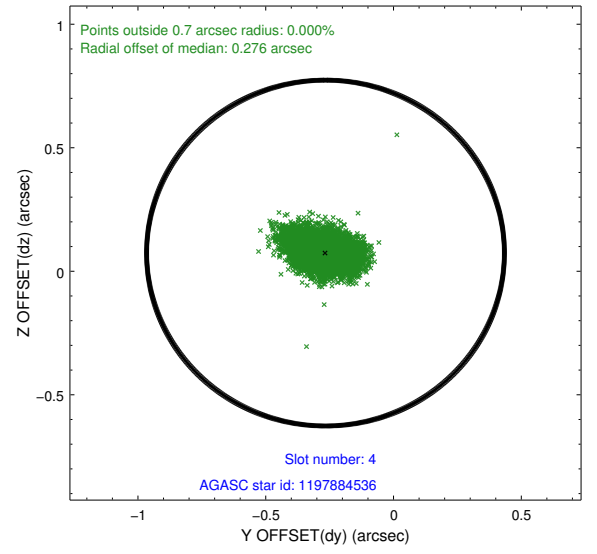
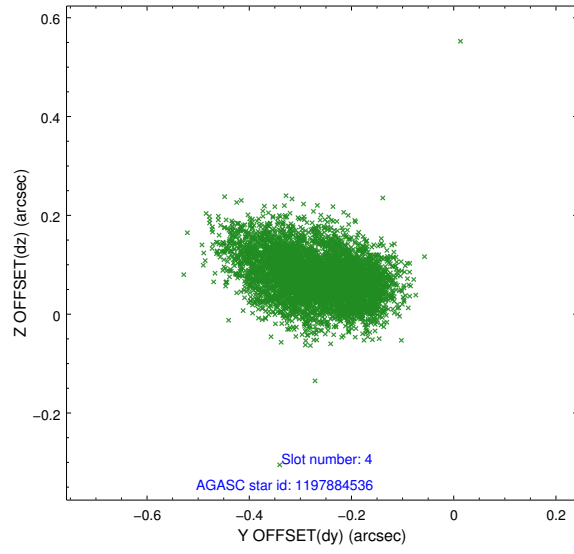
slot	status	id	mag	n_pts	med_dy	med_dz	dr1	dr2	ra	dec	mean_y	mean_z
0	FID	ACIS-S-1	6.99	2574	0.087	0.176	0.009	0.016	0.000000	0.000000	930.05	-1913.92
1	FID	ACIS-S-2	6.90	2576	-0.208	-0.157	0.009	0.014	0.000000	0.000000	-765.88	-1919.46
2	FID	ACIS-S-6	7.19	2576	0.100	-0.016	0.007	0.013	0.000000	0.000000	395.37	626.61
3	GUIDE	1197750936	7.57	5149	0.068	0.171	0.076	0.115	15.387940	-71.549550	-967.31	-643.11
4	GUIDE	1197884536	8.49	5149	-0.266	0.074	0.098	0.155	17.160729	-71.835289	79.27	1351.28
5	GUIDE	1197884712	8.29	5150	0.108	-0.108	0.095	0.146	16.087398	-72.252690	1564.07	137.44
6	GUIDE	1197885104	9.34	5148	-0.001	-0.041	0.135	0.207	17.845067	-72.189368	1377.70	2073.19
7	GUIDE	1197885328	7.25	5150	0.088	-0.094	0.065	0.106	16.283090	-71.733943	-302.01	371.60

2.4 Star Slots

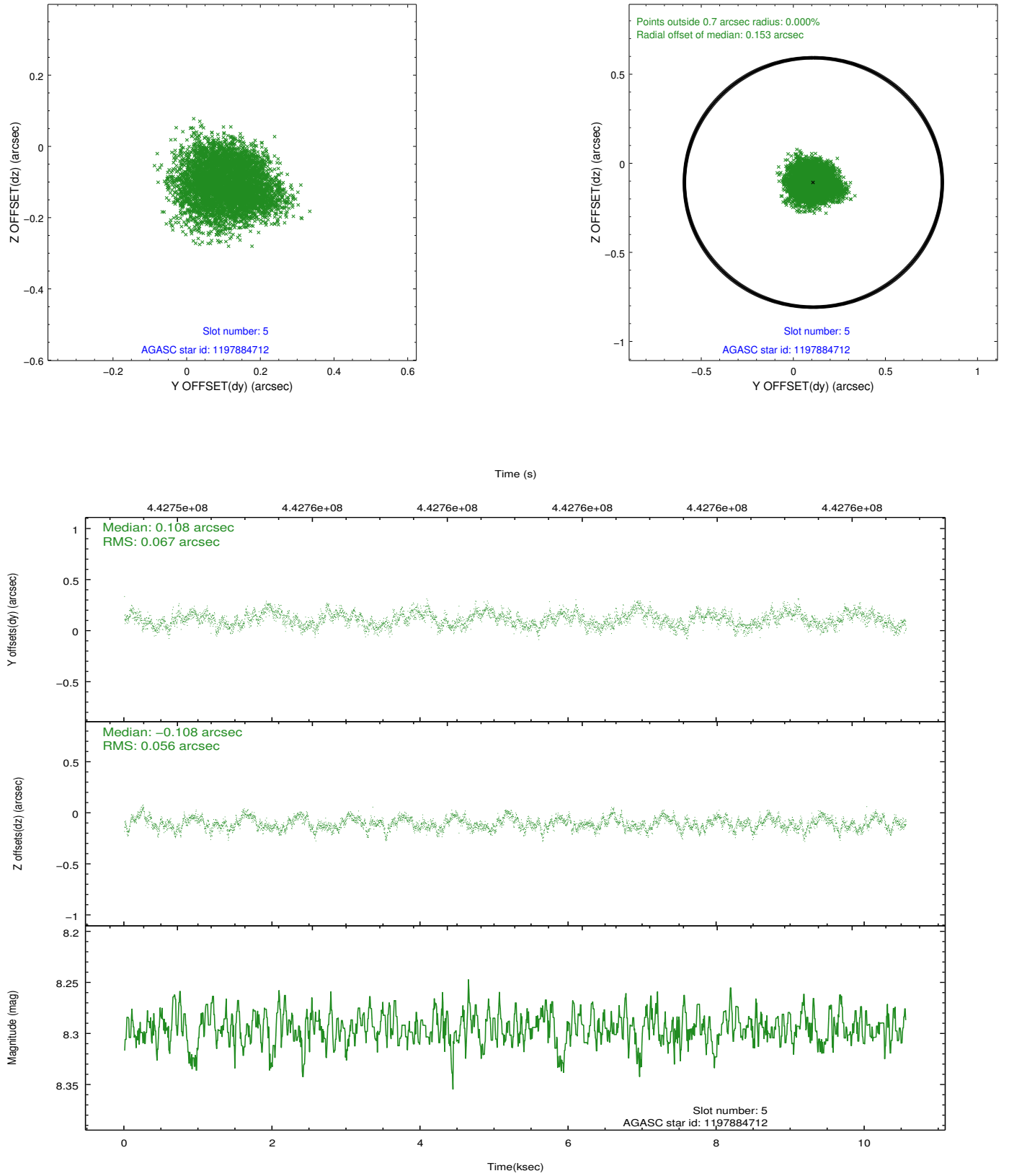
2.4.1 Slot 3



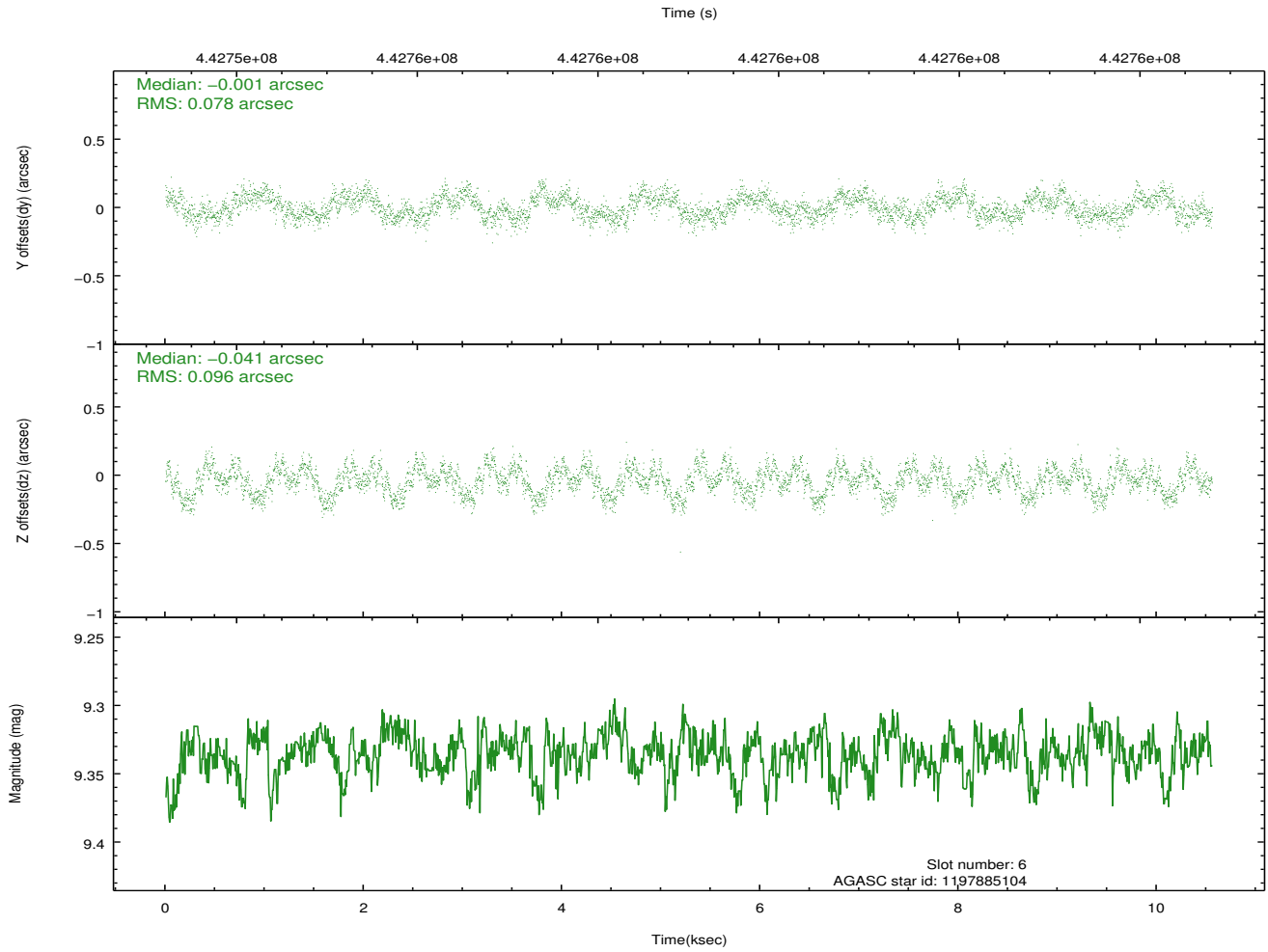
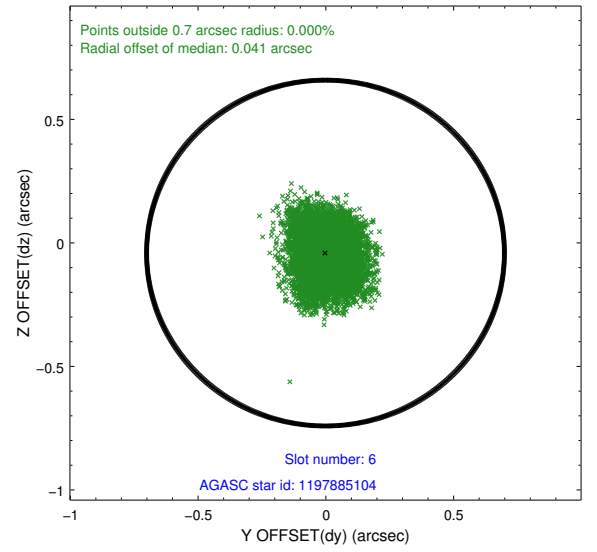
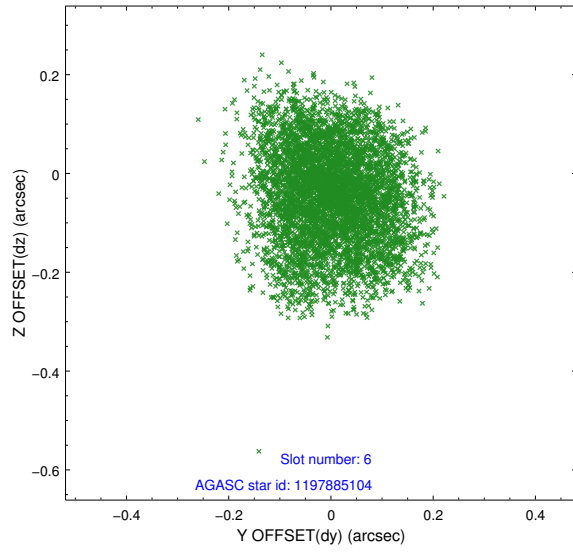
2.4.2 Slot 4



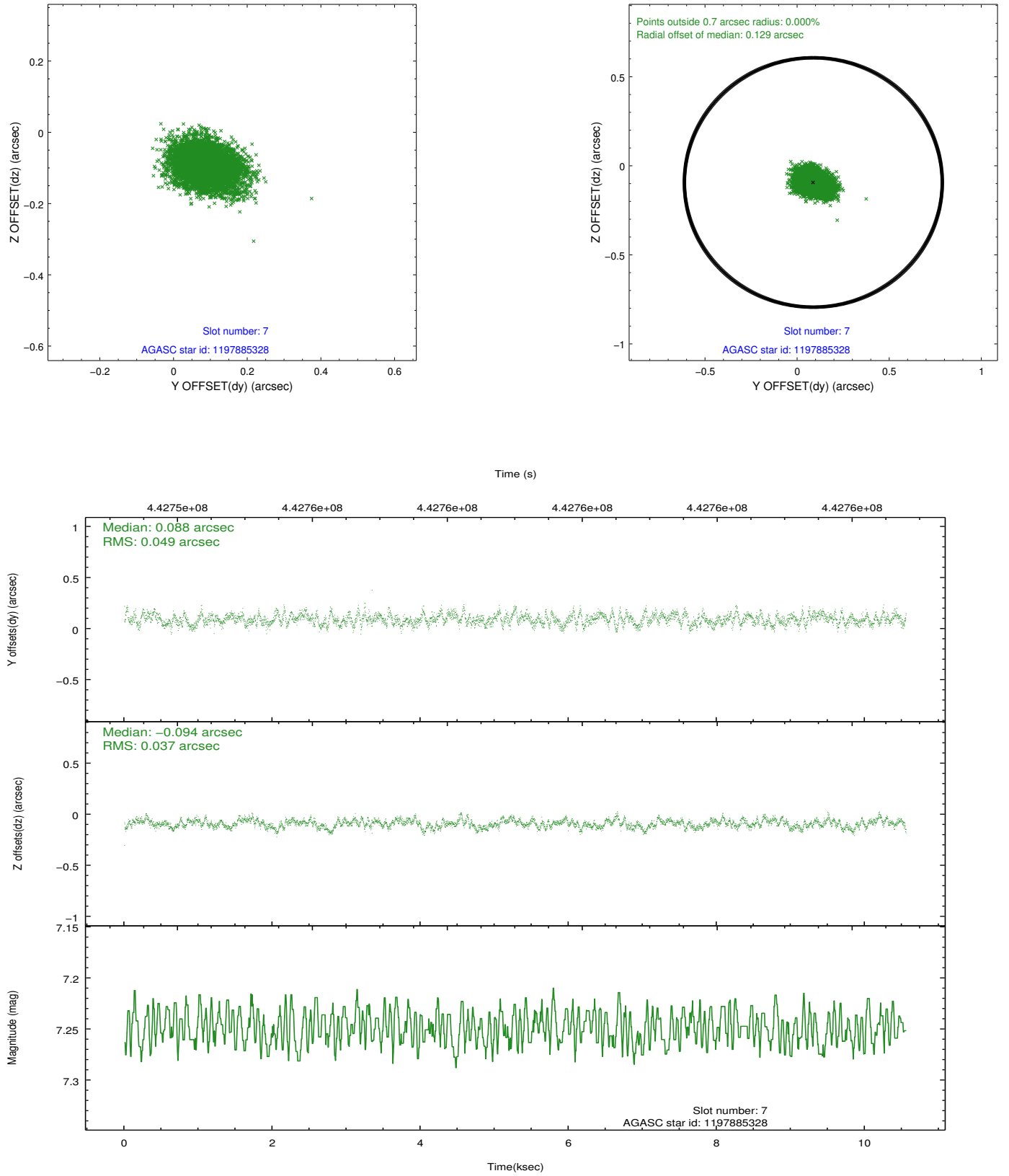
2.4.3 Slot 5



2.4.4 Slot 6

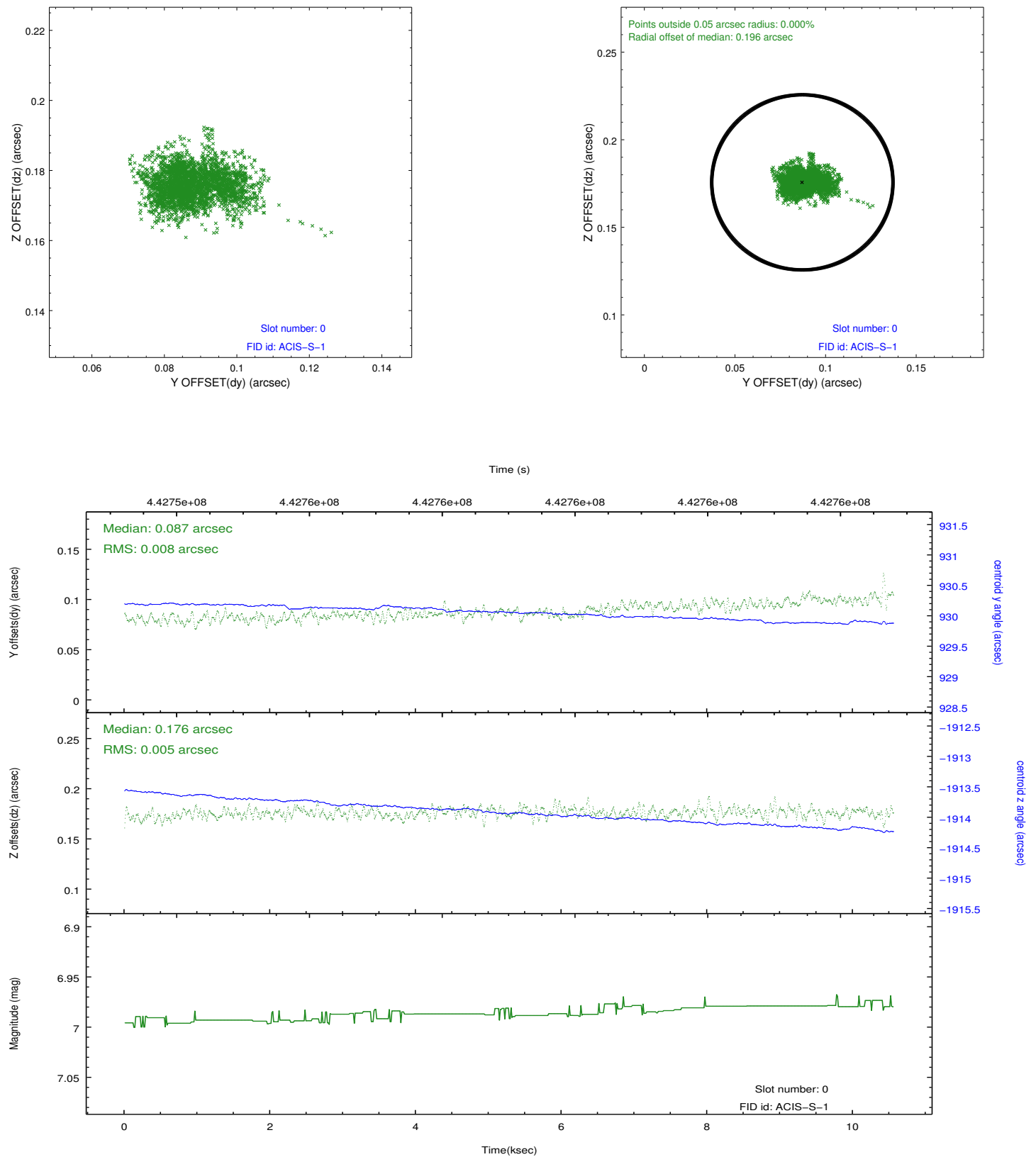


2.4.5 Slot 7

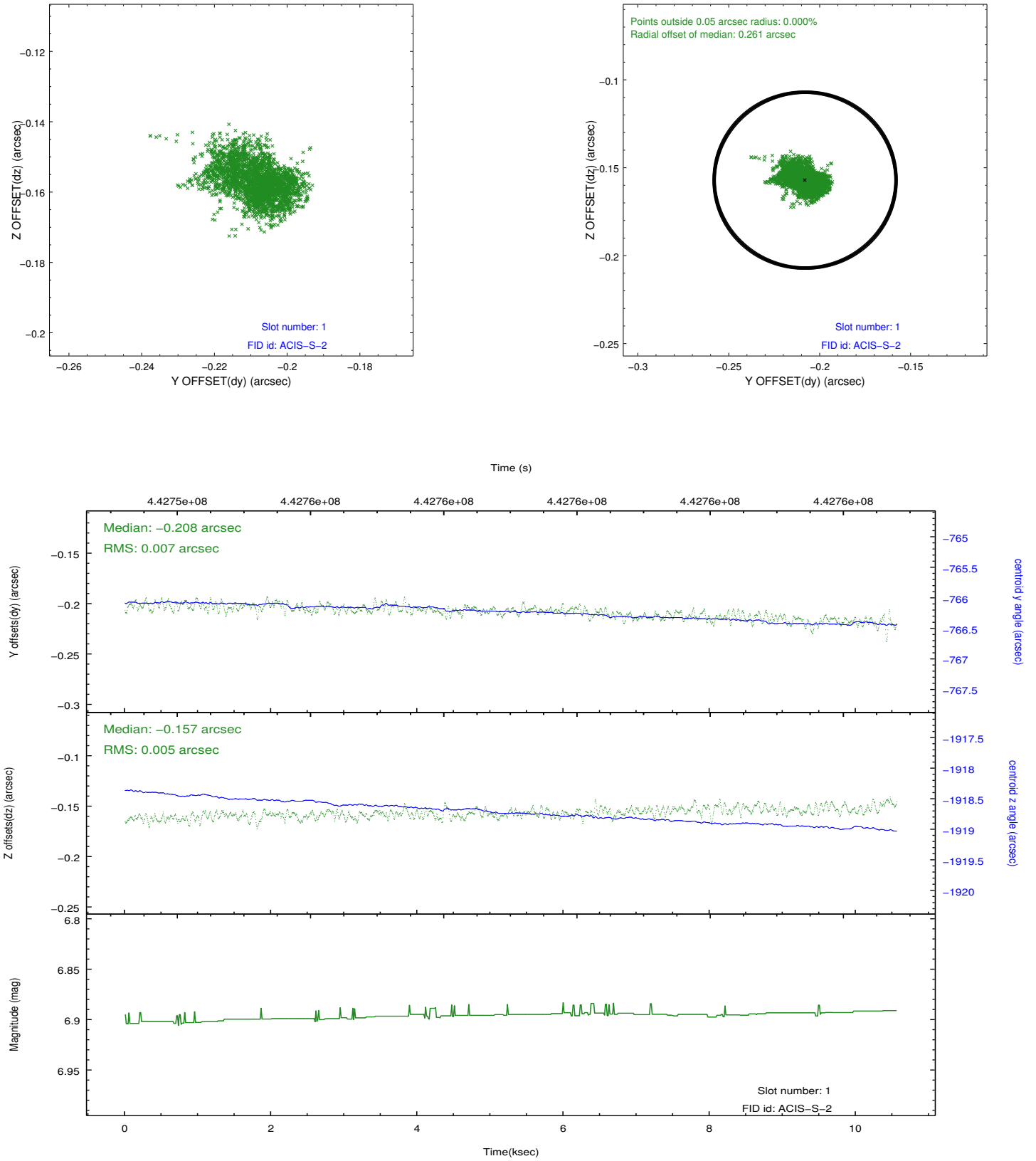


2.5 FID Slots

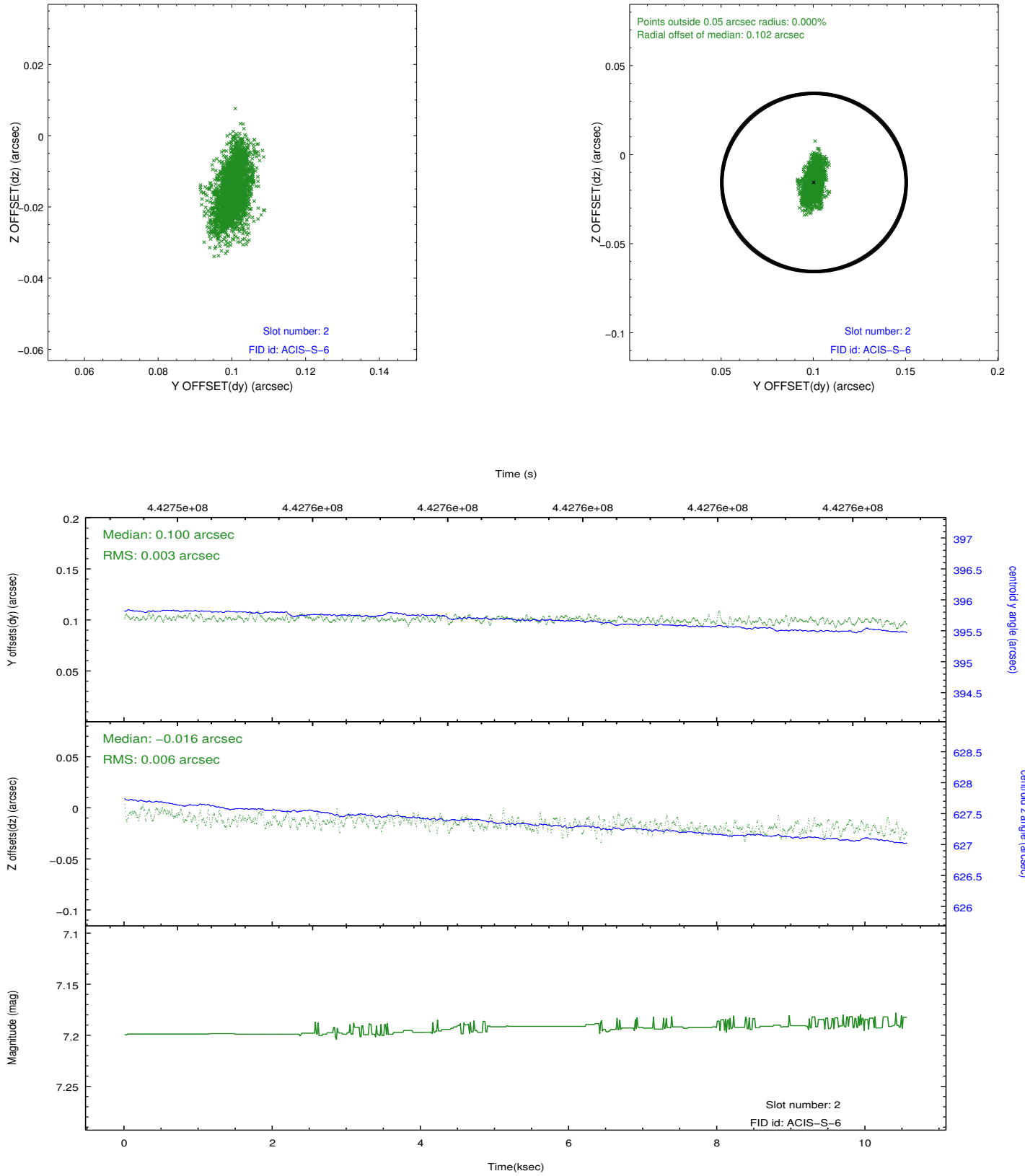
2.5.1 Slot 0



2.5.2 Slot 1



2.5.3 Slot 2



A Summary

A.1 Status

V&V Scientist	Jen Lauer
V&V Date (YYYY-MM-DD)	2012.01.13
V&V Edition	1
V&V Disposition and Status	OK
V&V Charge Time	10.028000149488

A.2 Comments

Window constraint met.