

V&V Reference Report

L2 ASCDS Version : 8.4.3

Observation 13540 - L2 Version 2
Chandra X-Ray Center

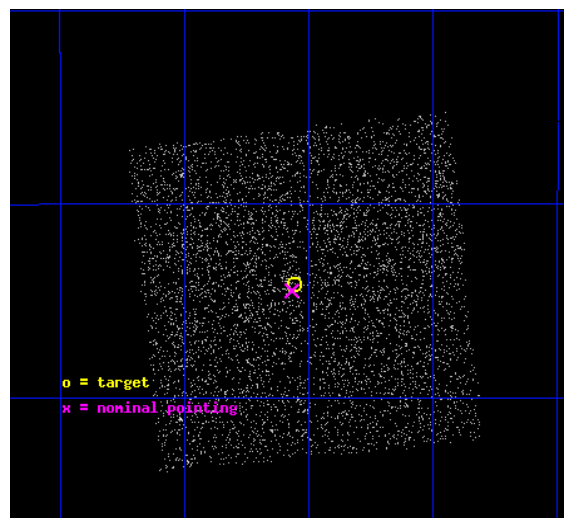
L2 Processing Date : Feb 25 2012

Contents

1	Front	2
2	OBI	3
2.1	OBI	3
2.1.1	Images	3
2.1.2	Bias	3
2.1.3	Parameters	4
2.1.4	Events	4
2.2	Compared Parameters	5
2.3	Aspect	6
2.4	Star Slots	9
2.4.1	Slot 3	9
2.4.2	Slot 4	10
2.4.3	Slot 5	11
2.4.4	Slot 6	12
2.4.5	Slot 7	13
2.5	FID Slots	14
2.5.1	Slot 0	14
2.5.2	Slot 1	15
2.5.3	Slot 2	16
A	Summary	17
A.1	Status	17
A.2	Comments	17

1 Front

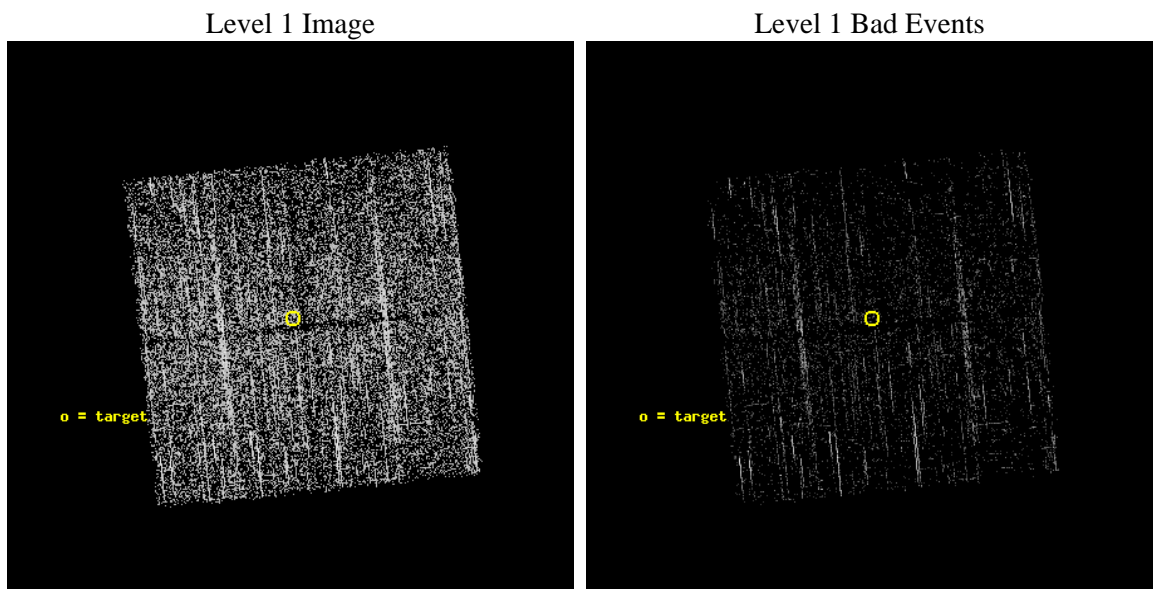
seq_num	401316	Sequence number
obs_id	13540	Observation id
title	Completing the Galactic Bulge Survey: categorizing the plethora of faint X-ray sources in the Galactic Bulge	Proposal title
observer	dr P Jonker	Principal investigator
object	GBS13-2	Source name
dtcycle	0	
cycle	P	events from which exps? Prim/Second/Both
ra_targ	268.015131	Observer's specified target RA [deg]
dec_targ	-29.902785	Observer's specified target Dec [deg]
ra_nom	268.01711898192	Nominal RA [deg]
dec_nom	-29.908062664007	Nominal Dec [deg]
roll_nom	264.0457222383	Nominal Roll [deg]
revision	2	Processing version of data
ontime	1973.4690811038	Sum of GTIs [s]
livetime	1947.6842547124	Livetime [s]
ontime0	1973.3459610939	Sum of GTIs [s]
ontime1	1973.3870010972	Sum of GTIs [s]
ontime2	1973.4280411005	Sum of GTIs [s]
ontime3	1973.4690811038	Sum of GTIs [s]
l2events	6305	Number of level 2 events



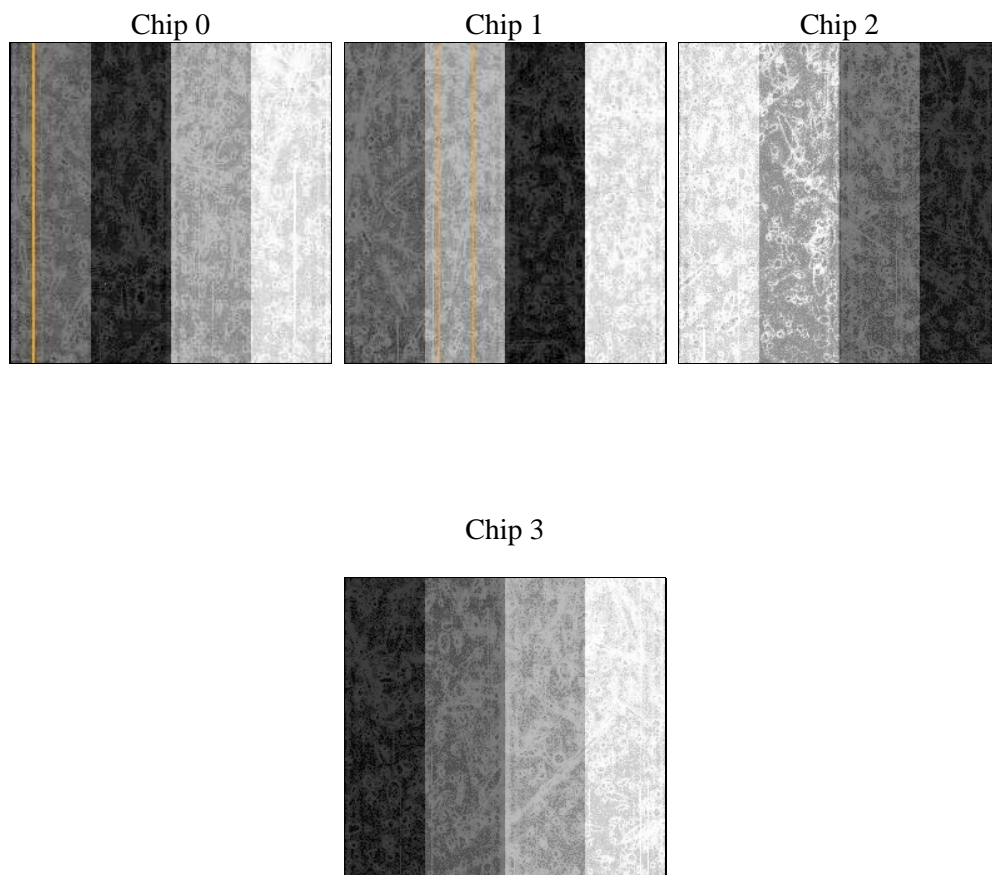
2 OBI

2.1 OBI

2.1.1 Images



2.1.2 Bias



2.1.3 Parameters

obi_num	0	Obi number	sched_exp_time	2180.000000	[s] Scheduled observation exposure time
ascdsver	8.4.3	Processing system revision	ontime	1973.4690811038	Sum of GTIs [s]
caldsver	4.4.8	 	ontime0	1973.3459610939	Sum of GTIs [s]
date	2012-02-26T01:06:03	Date and time of file creation	ontime1	1973.3870010972	Sum of GTIs [s]
revision	2	Processing version of data	ontime2	1973.4280411005	Sum of GTIs [s]
			ontime3	1973.4690811038	Sum of GTIs [s]
			l1events	49182	Number of level 1 events

2.1.4 Events

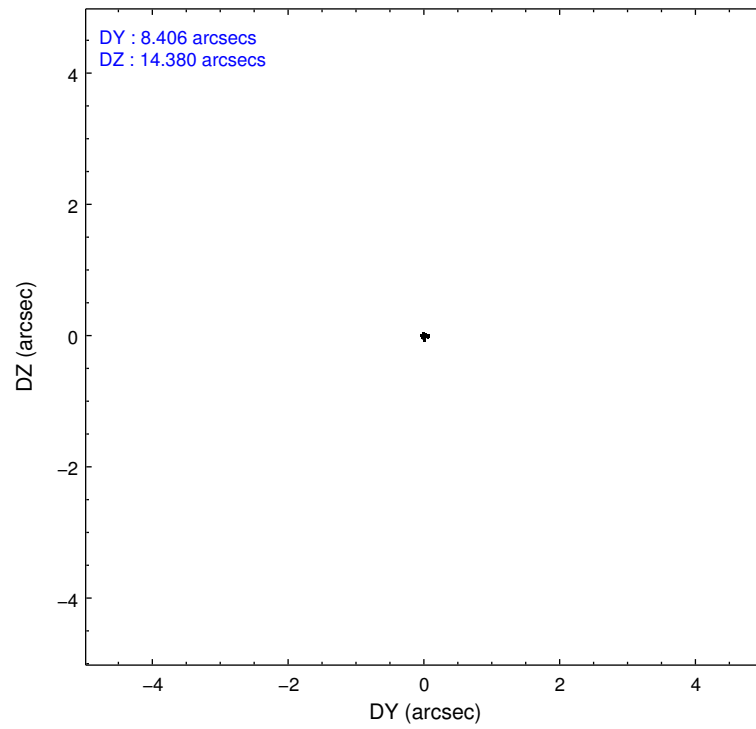
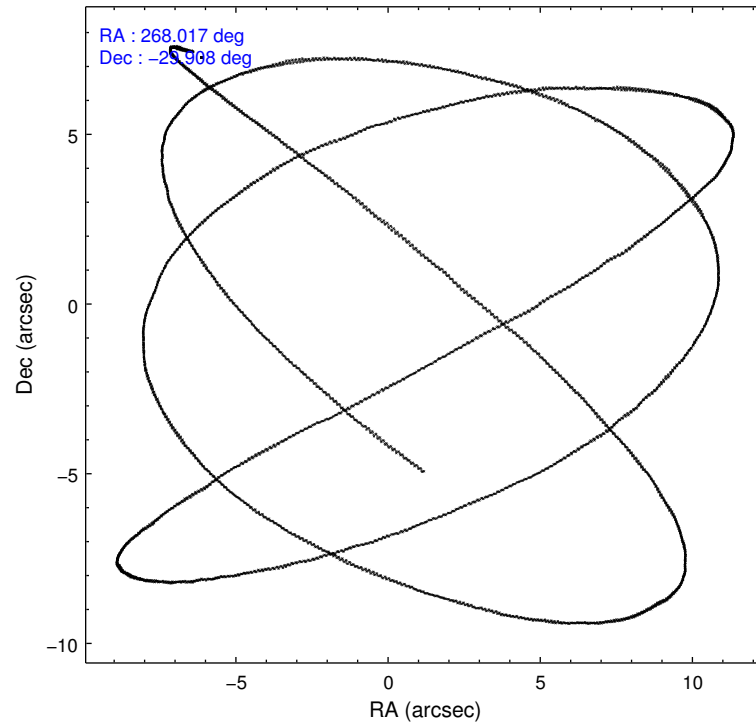
	ccd 0	ccd 1	ccd 2	ccd 3
level 1 events	12595	10692	13434	12461
rejected events	10896	8673	11724	10645
rejected %	86%	81%	87%	85%

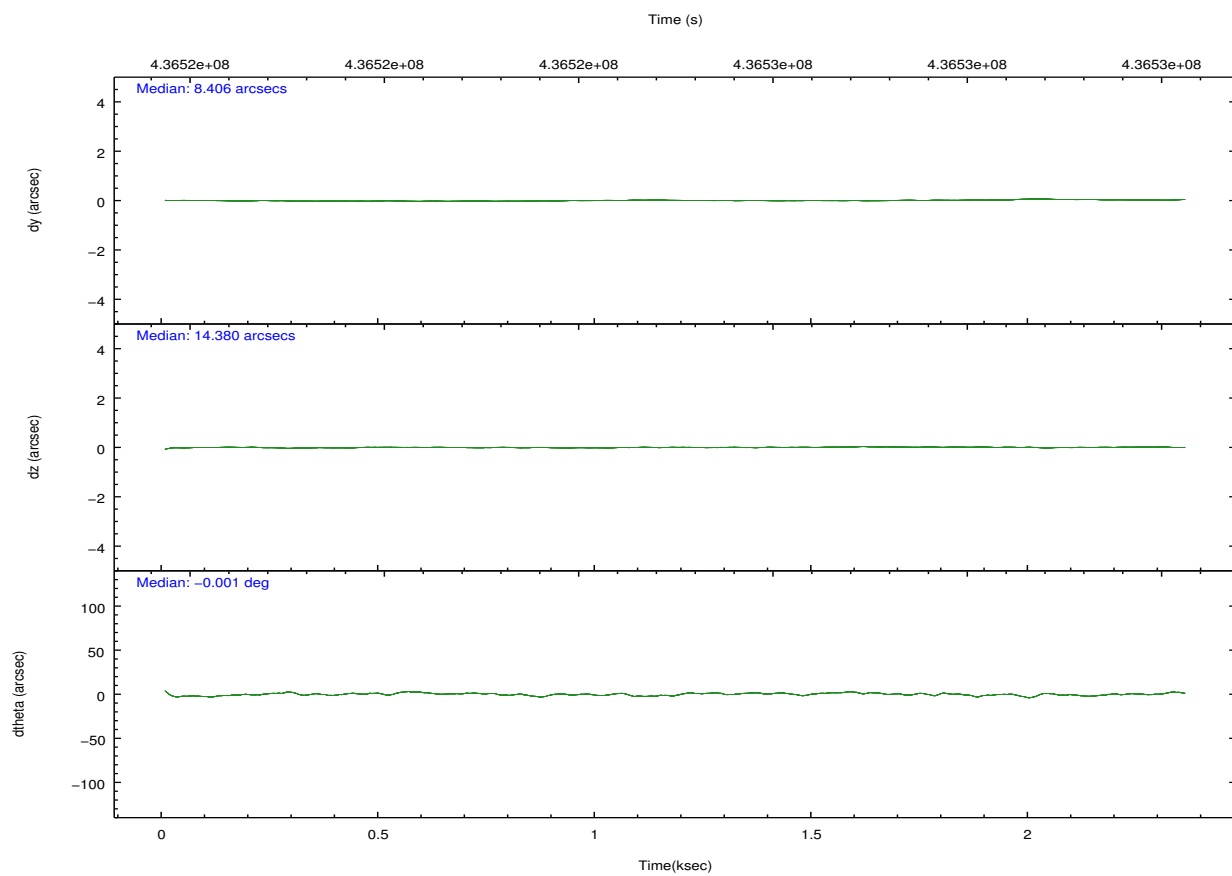
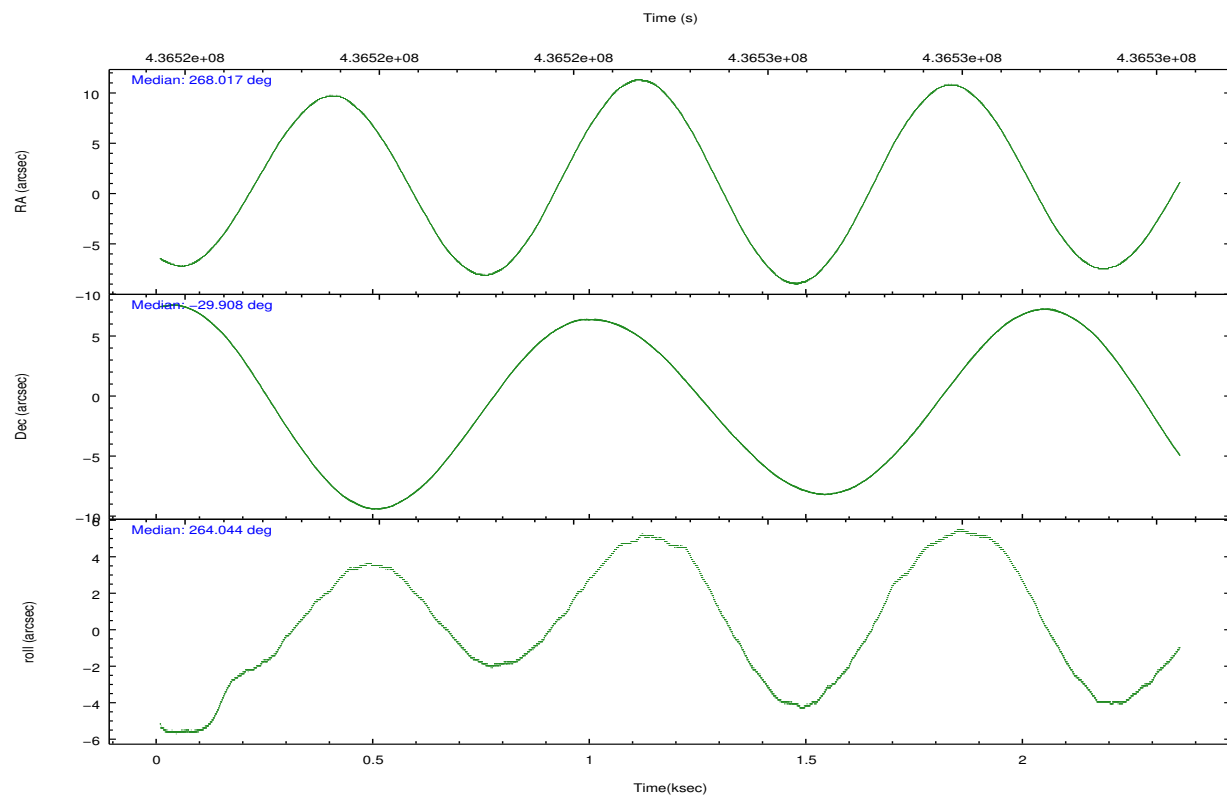
	ccd 0	ccd 1	ccd 2	ccd 3
grade 0 events	756	971	791	887
	6%	9%	5%	7%
grade 1 events	6	8	10	13
	0%	0%	0%	0%
grade 2 events	351	418	373	370
	2%	3%	2%	2%
grade 3 events	160	172	130	145
	1%	1%	0%	1%
grade 4 events	152	148	157	149
	1%	1%	1%	1%
grade 5 events	551	517	510	556
	4%	4%	3%	4%
grade 6 events	288	315	265	275
	2%	2%	1%	2%
grade 7 events	10331	8143	11198	10066
	82%	76%	83%	80%

2.2 Compared Parameters

Parameter	Planned	Actual	Parameter	Planned	Actual
Instrument	ACIS	ACIS	Obspar format version number	7	7
Detector	ACIS-0123	ACIS-0123	Obspar file type	PREDICTED	ACTUAL
Grating	NONE	NONE	Obspar update status	NONE	UPDATED
Data mode	VFAINT	VFAINT	Number of optional ACIS chips dropped	0	0
Observation mode	POINTING	POINTING	On-chip summing requested	N	N
[deg] Pointing RA	268.004233	268.0171189819152	Subarray requested	NONE	NONE
[deg] Pointing Dec	-29.883162	-29.90806266400654	Alternating exposures requested	N	N
[deg] Pointing Roll	263.830618	264.0457222383035	[s] Primary exposure time	0.000000	3.1
[mm] SIM focus pos	-0.782348	-0.7809083437167272			
[mm] SIM defocus	0	0.001439871863259334			
[mm] SIM translation stage pos	-233.592463	-233.5874344608287			
[mm] SIM translation stage offset	0	-0.005018542100998502			
[s] Observation start time (MET)	436524249.184000	436523873.05706			
Observation start date	2011-11-01T08:43:03	2011-11-01T08:37:53			
[s] Observation end time (MET)	436526429.184000	436526562.6572			
Observation end date	2011-11-01T09:19:23	2011-11-01T09:22:42			
Read mode	TIMED	TIMED			

2.3 Aspect



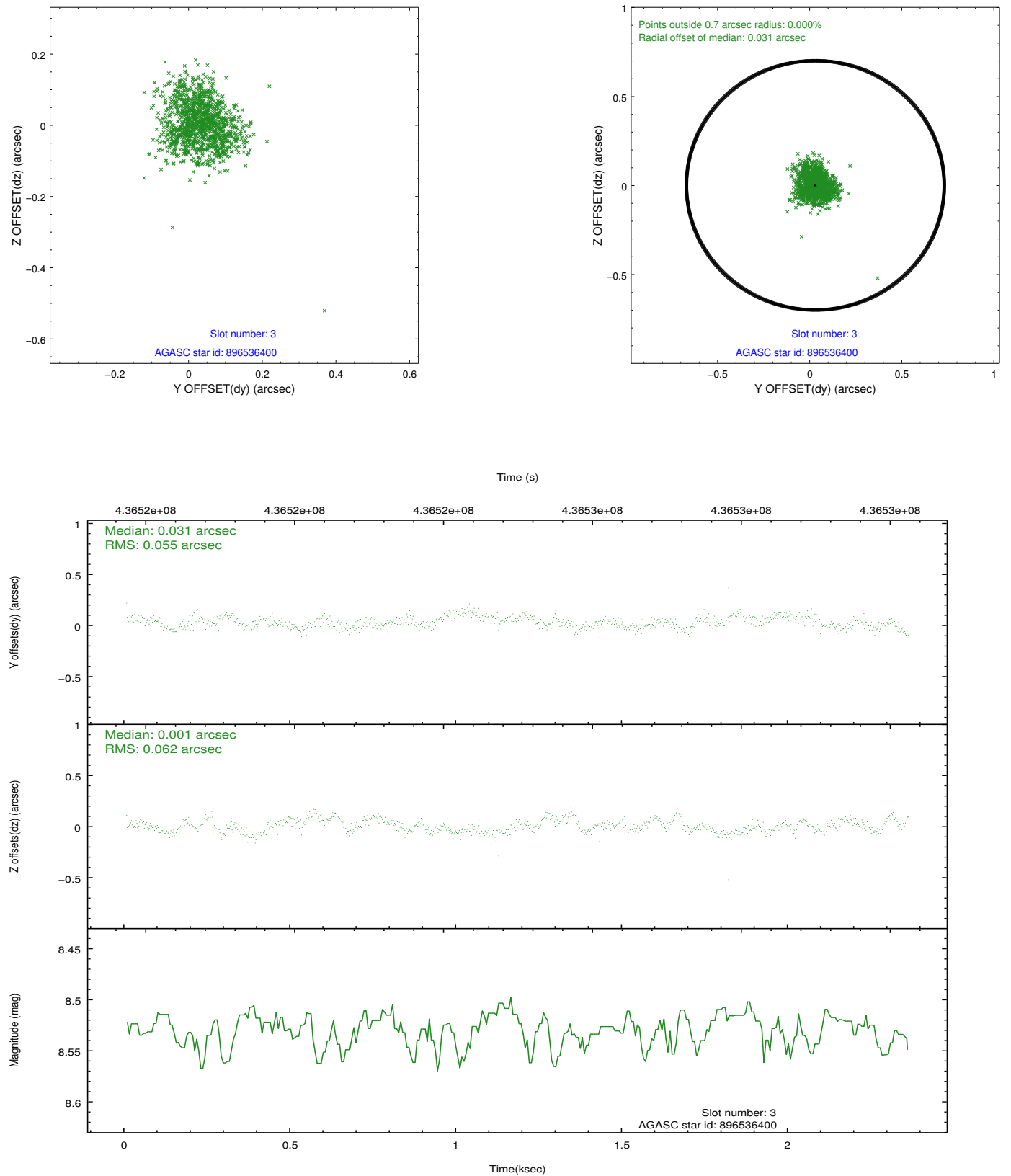


Slot Statistics

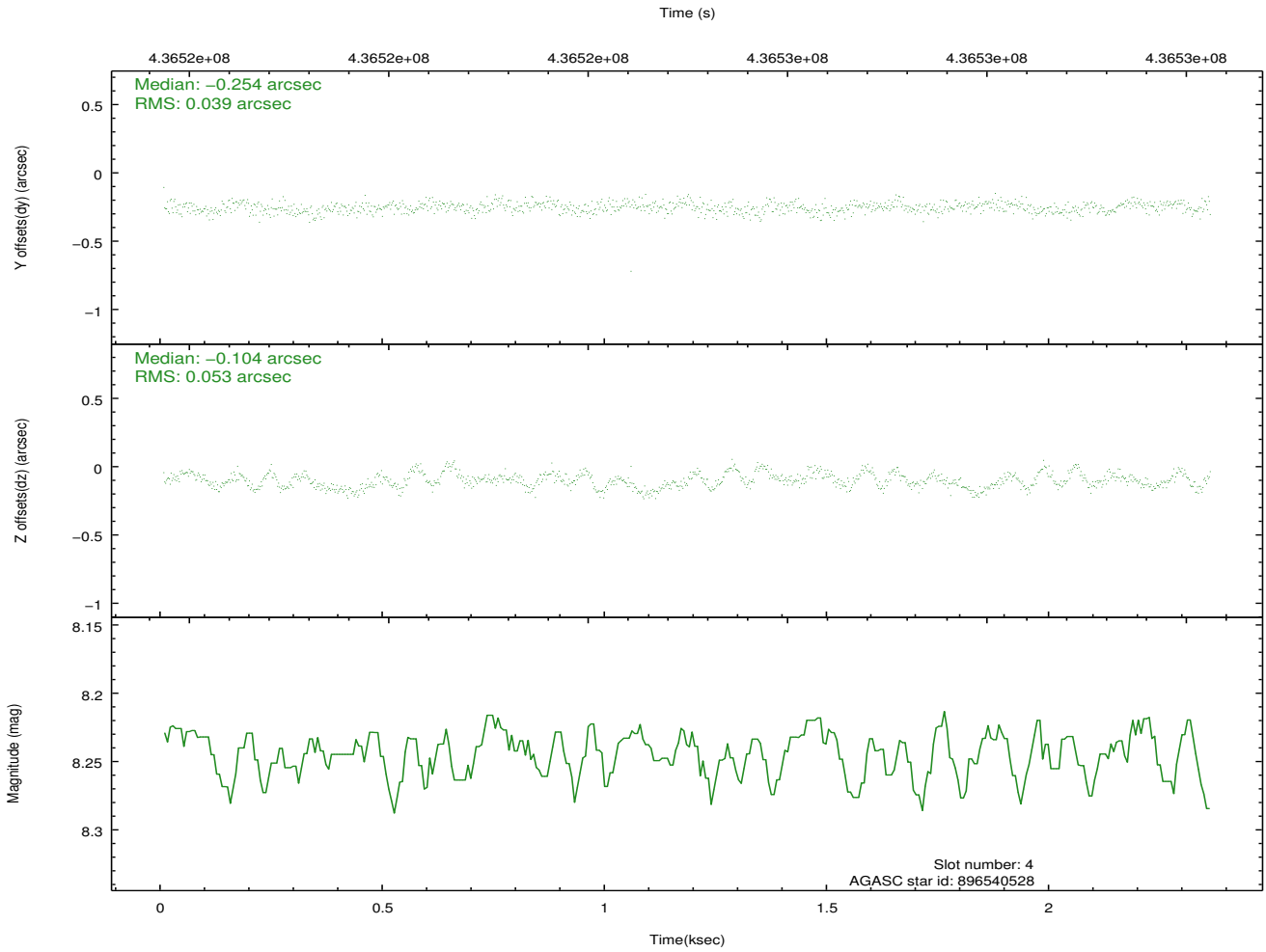
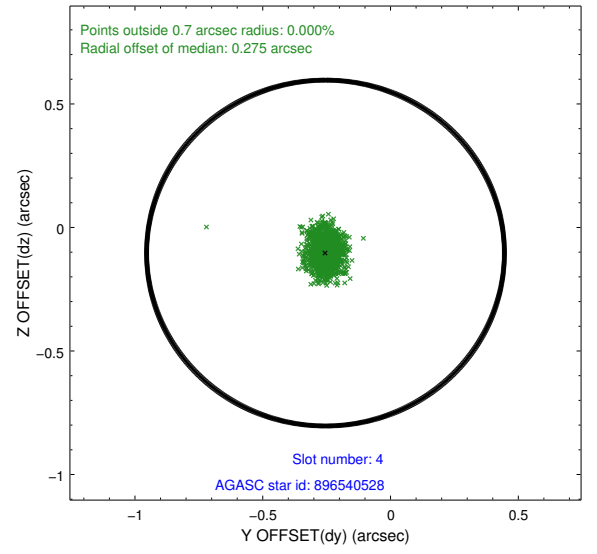
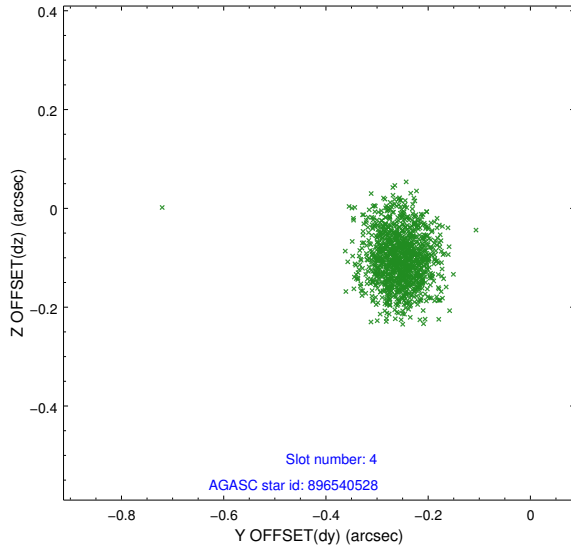
slot	status	id	mag	n_pts	med_dy	med_dz	dr1	dr2	ra	dec	mean_y	mean_z
0	FID	ACIS-I-1	7.01	575	-0.020	0.059	0.008	0.015	0.000000	0.000000	931.20	-837.92
1	FID	ACIS-I-2	6.94	575	-0.211	-0.103	0.007	0.012	0.000000	0.000000	-761.55	-845.88
2	FID	ACIS-I-4	6.94	575	0.132	0.112	0.008	0.016	0.000000	0.000000	2150.01	1060.52
3	GUIDE	896536400	8.53	1150	0.031	0.001	0.088	0.136	267.359146	-29.438655	-1366.76	-2181.51
4	GUIDE	896540528	8.24	1149	-0.254	-0.104	0.069	0.111	267.368305	-29.314773	-1814.51	-2204.84
5	GUIDE	967056000	9.27	1150	0.118	0.157	0.104	0.164	267.890633	-30.287099	1483.60	-195.82
6	GUIDE	967057128	9.34	1147	0.006	-0.044	0.099	0.157	267.996939	-30.494743	2193.84	214.67
7	GUIDE	966920552	8.90	1149	0.096	-0.014	0.112	0.178	267.271588	-30.476409	2378.18	-2028.82

2.4 Star Slots

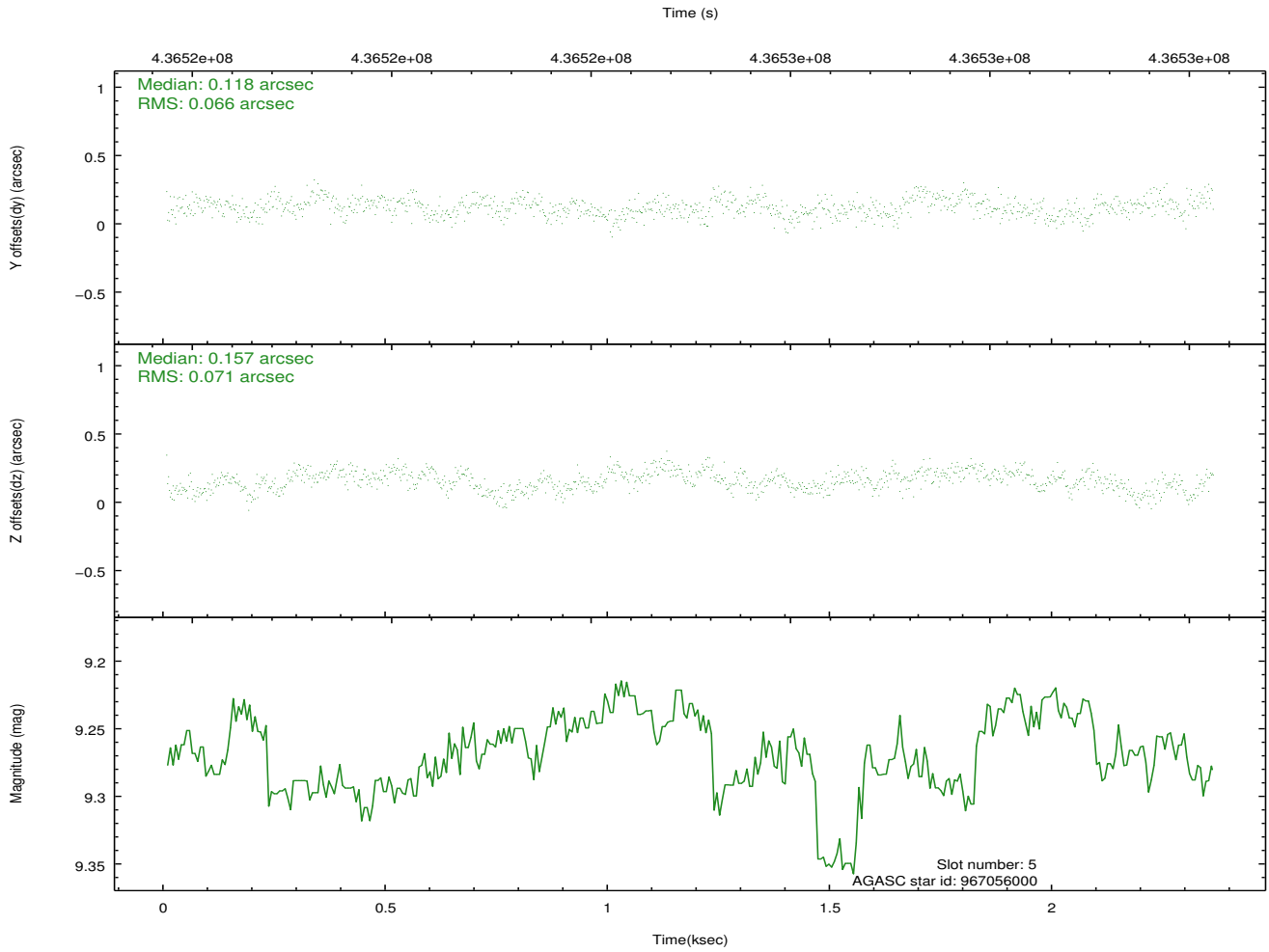
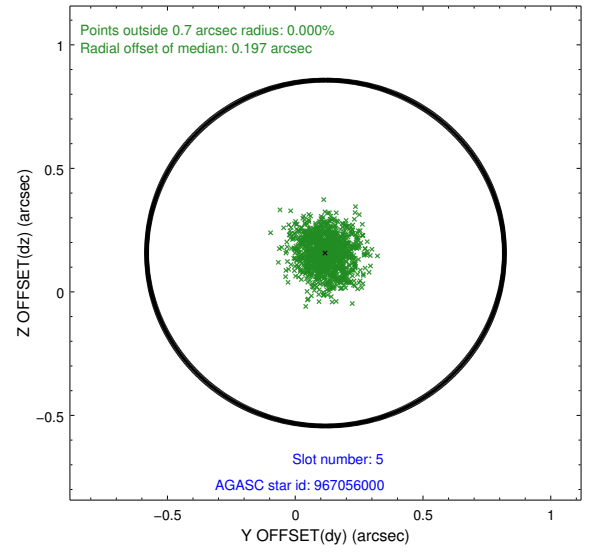
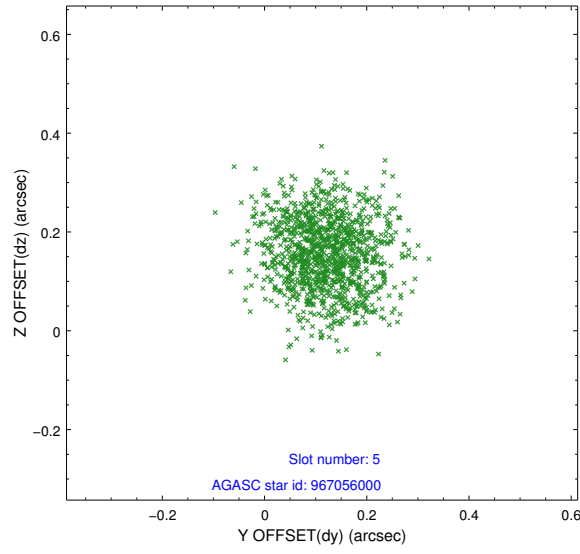
2.4.1 Slot 3



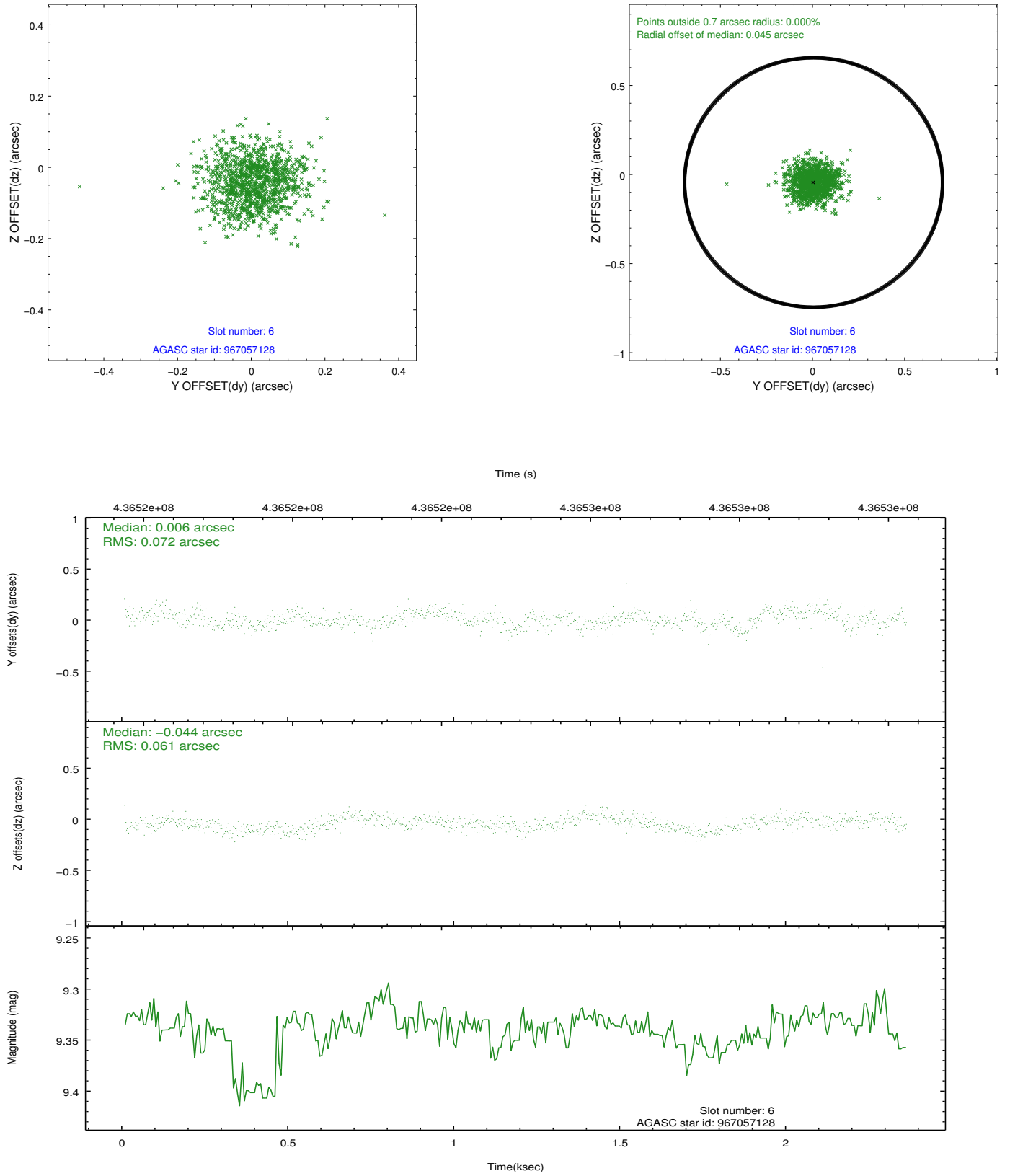
2.4.2 Slot 4



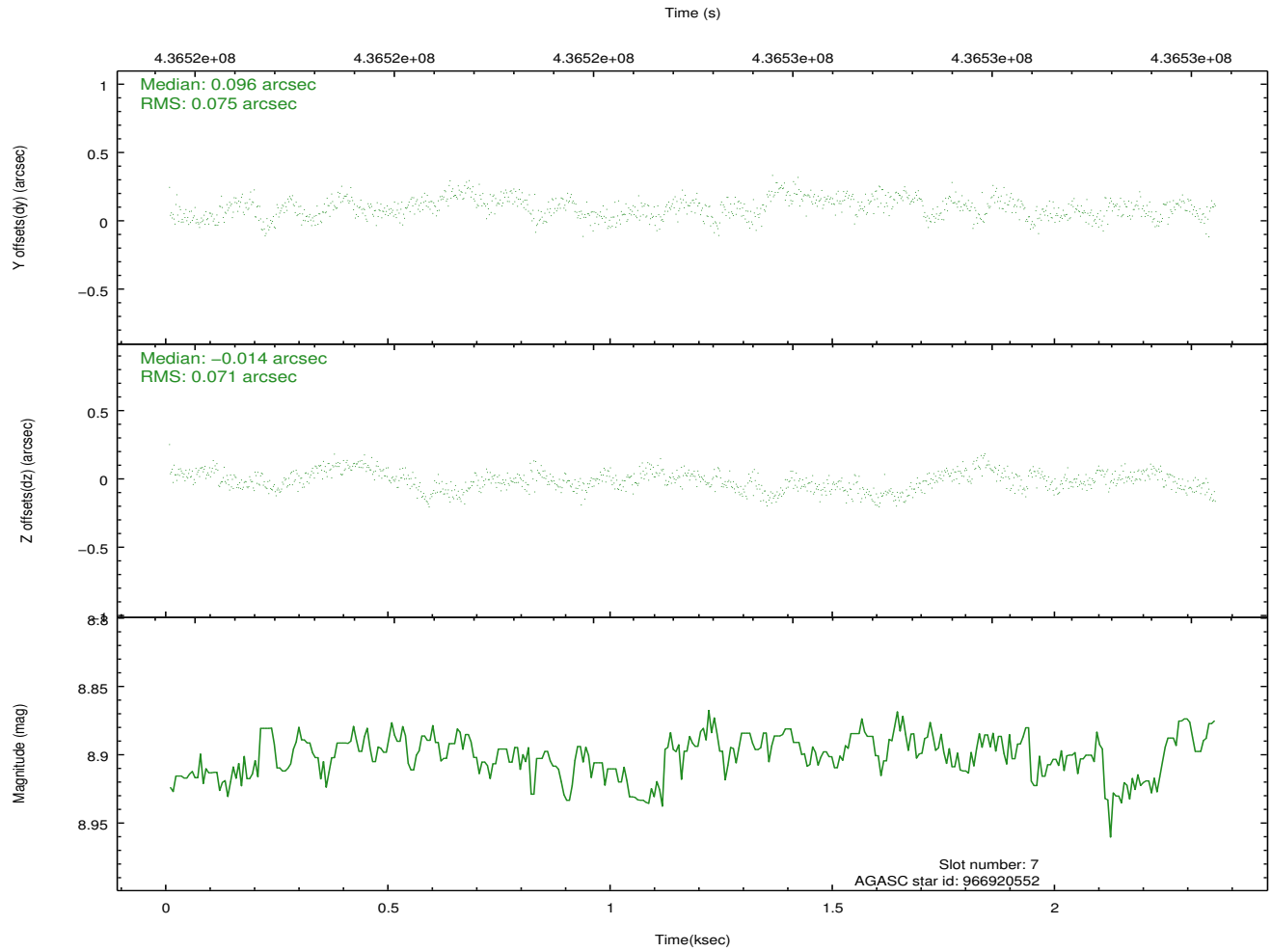
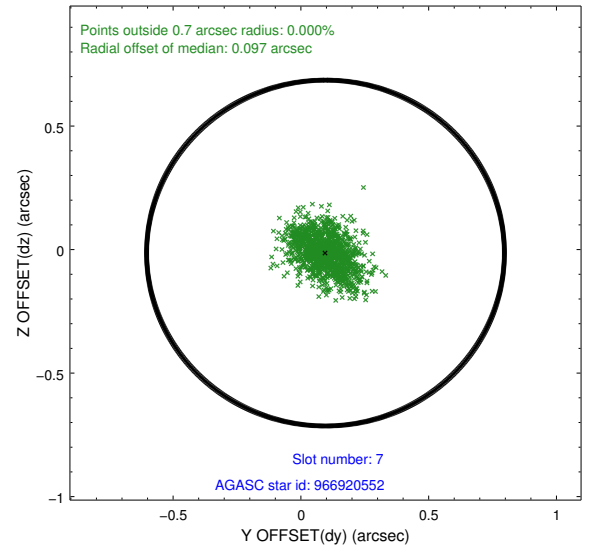
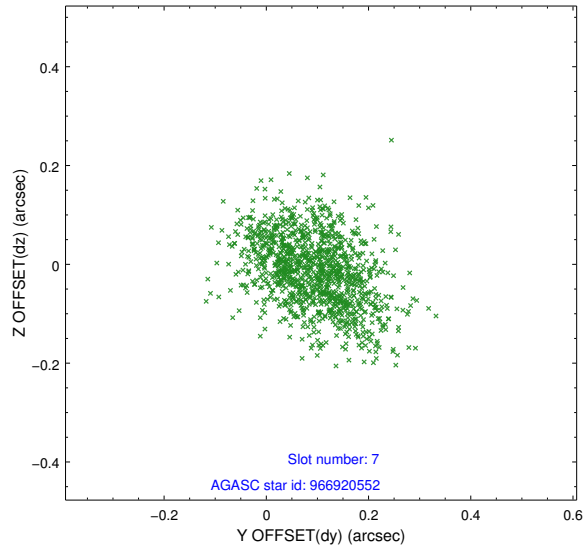
2.4.3 Slot 5



2.4.4 Slot 6

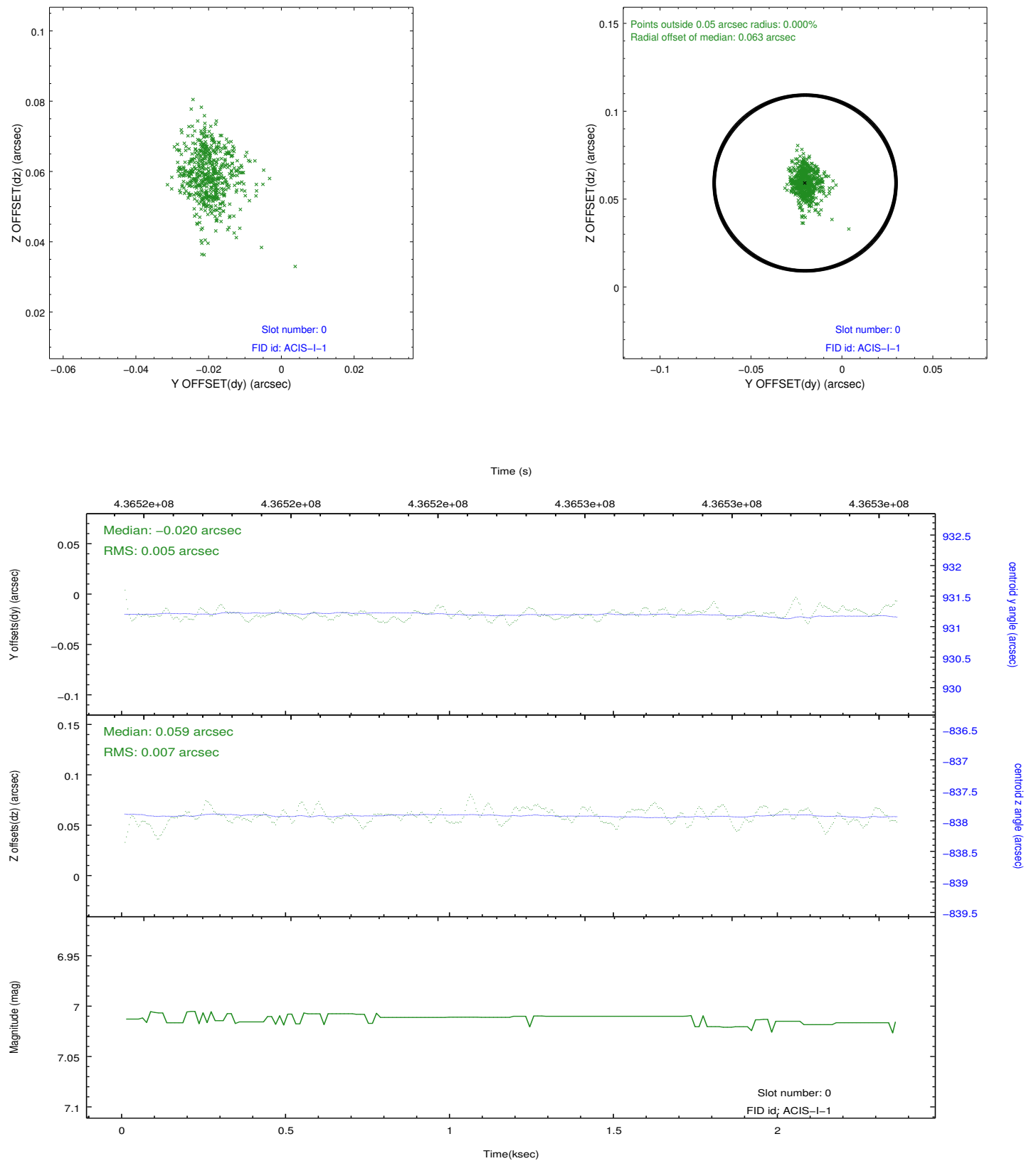


2.4.5 Slot 7

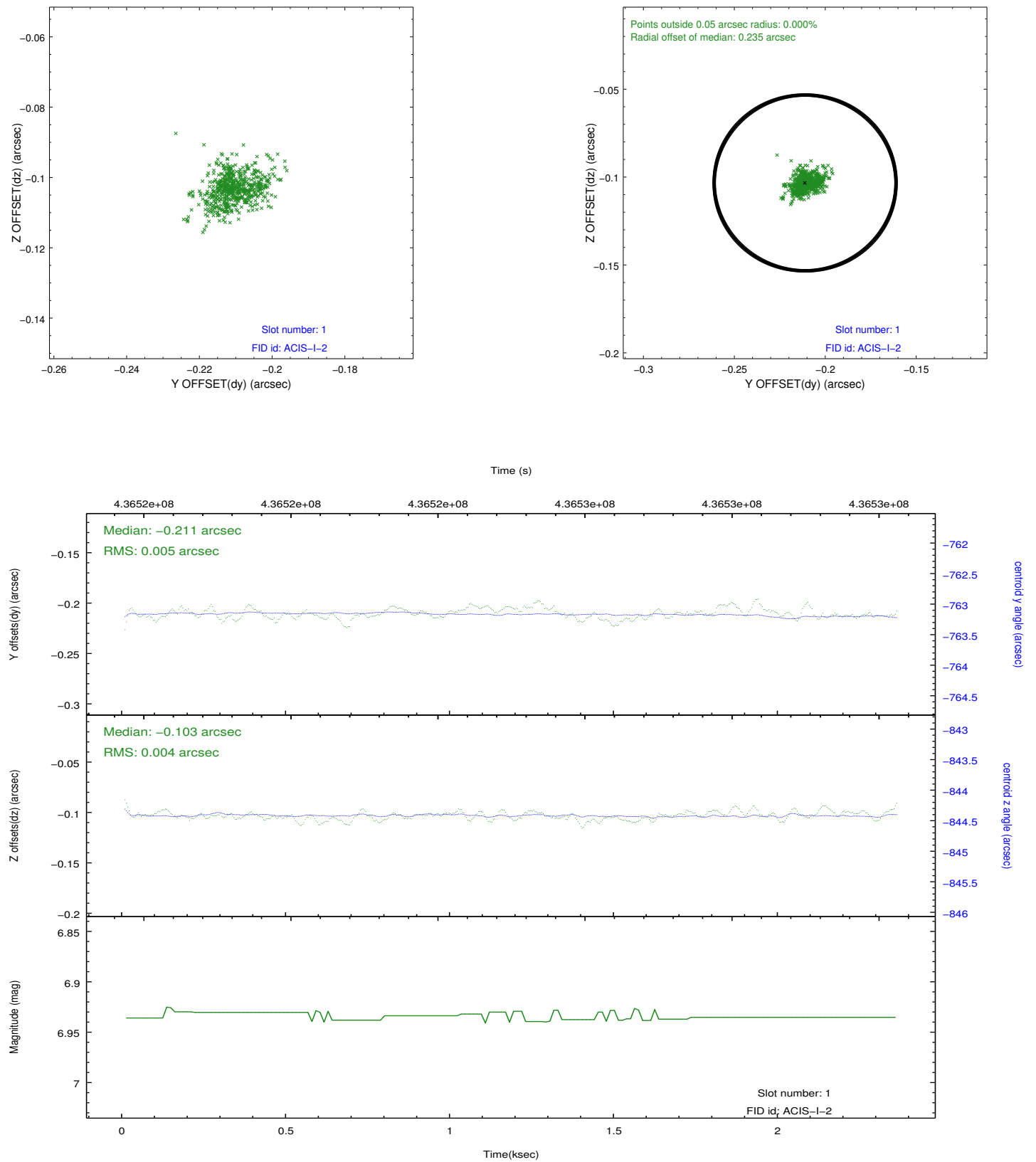


2.5 FID Slots

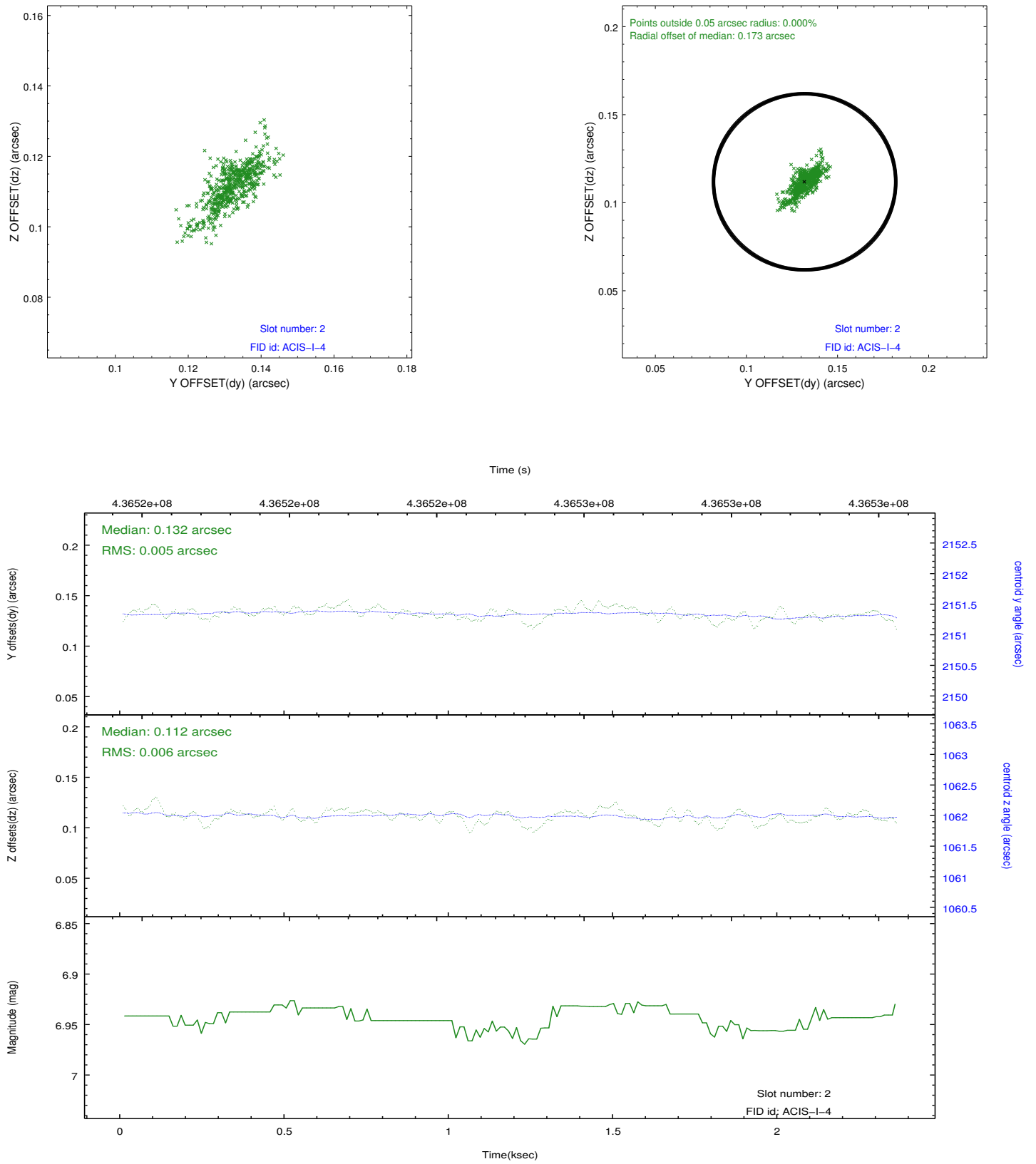
2.5.1 Slot 0



2.5.2 Slot 1



2.5.3 Slot 2



A Summary

A.1 Status

V&V Scientist	Jen Lauer
V&V Date (YYYY-MM-DD)	2012.02.27
V&V Edition	1
V&V Disposition and Status	OK
V&V Charge Time	1.9734690788984

A.2 Comments

Joint Proposal: NOAO