

V&V Reference Report

L2 ASCDS Version : 8.4.3

Observation 13230 - L2 Version 3
Chandra X-Ray Center

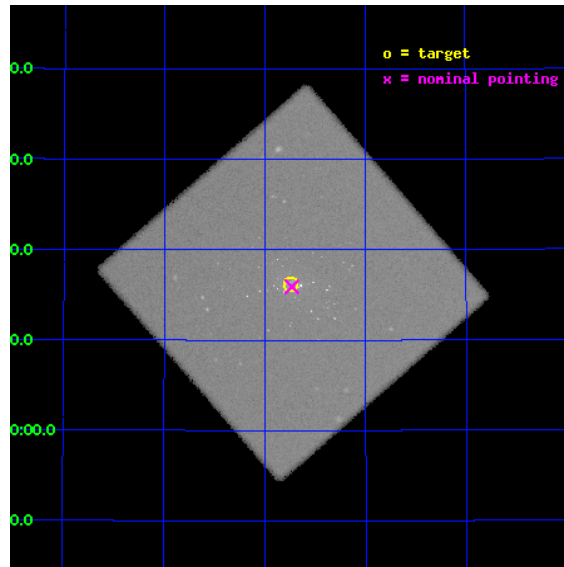
L2 Processing Date : Jul 28 2012

Contents

1	Front	2
2	OBI	3
2.1	OBI	3
2.1.1	Images	3
2.1.2	Parameters	4
2.1.3	Events	4
2.2	Compared Parameters	5
2.3	Aspect	6
2.4	Star Slots	9
2.4.1	Slot 3	9
2.4.2	Slot 4	10
2.4.3	Slot 5	11
2.4.4	Slot 6	12
2.4.5	Slot 7	13
2.5	FID Slots	14
2.5.1	Slot 0	14
2.5.2	Slot 1	15
2.5.3	Slot 2	16
A	Summary	17
A.1	Status	17
A.2	Comments	17

1 Front

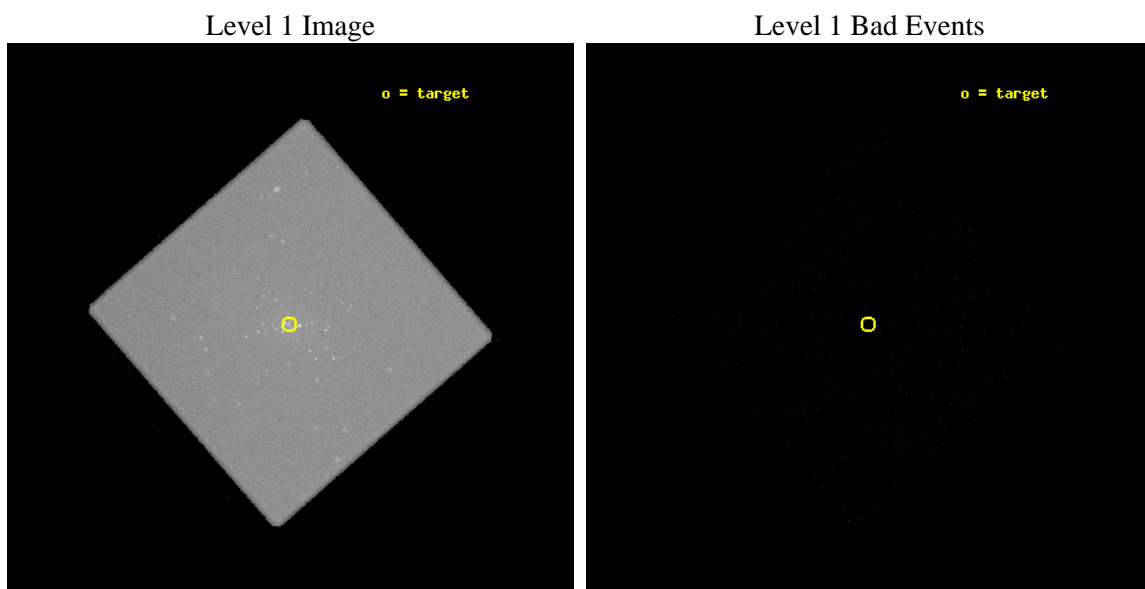
seq_num	300295	Sequence number
obs_id	13230	Observation id
title	Resolving short supersoft source states of optical novae in the core of M31	Proposal title
observer	Dr. Wolfgang Pietsch	Principal investigator
object	M31	Source name
ra_targ	10.684583	Observer's specified target RA [deg]
dec_targ	41.269278	Observer's specified target Dec [deg]
ra_nom	10.682881529341	Nominal RA [deg]
dec_nom	41.265205997148	Nominal Dec [deg]
roll_nom	273.93231291021	Nominal Roll [deg]
revision	3	Processing version of data
ontime	19121.375998557	[s]
livetime	18932.267537329	Ontime multiplied by DTCOR
l2events	1363163	Number of level 2 events



2 OBI

2.1 OBI

2.1.1 Images



2.1.2 Parameters

obi_num	0	Obi number	sched_exp_time	19000.000000	[s] Scheduled observation exposure time
ascdsver	8.4.5	Processing system revision	ontime	19121.376008511	[s]
caldsver	4.5.1	 	l1events	2028245	Number of level 1 events
date	2012-07-28T06:36:05	Date and time of file creation			
revision	3	Processing version of data			

2.1.3 Events

Level 1 Events

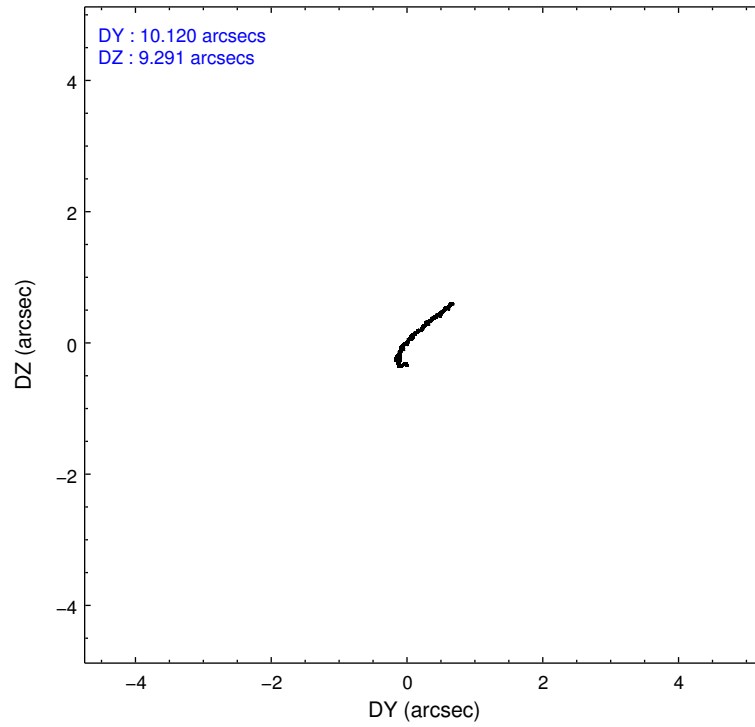
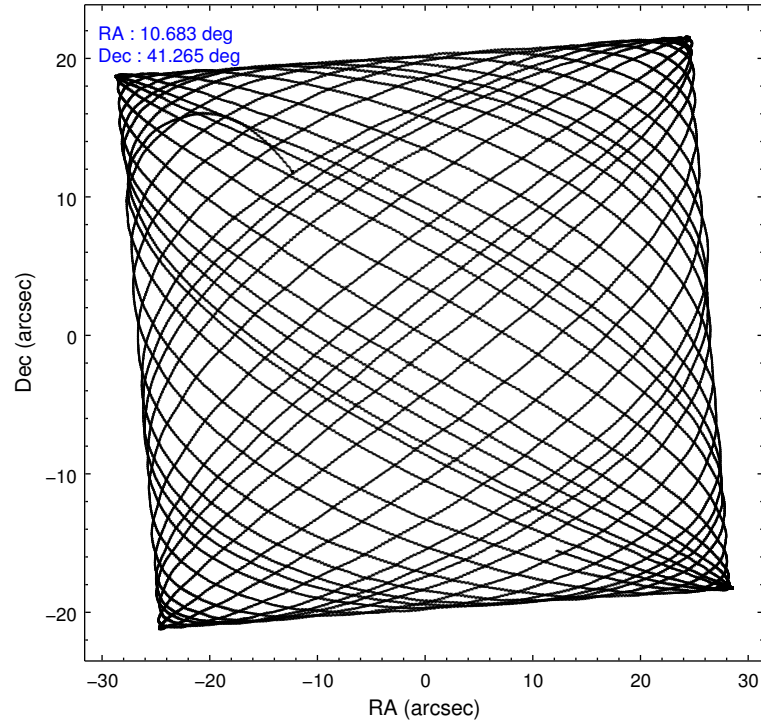
	segment 0
level 1 events	2028245
rejected events	150026
rejected %	7%

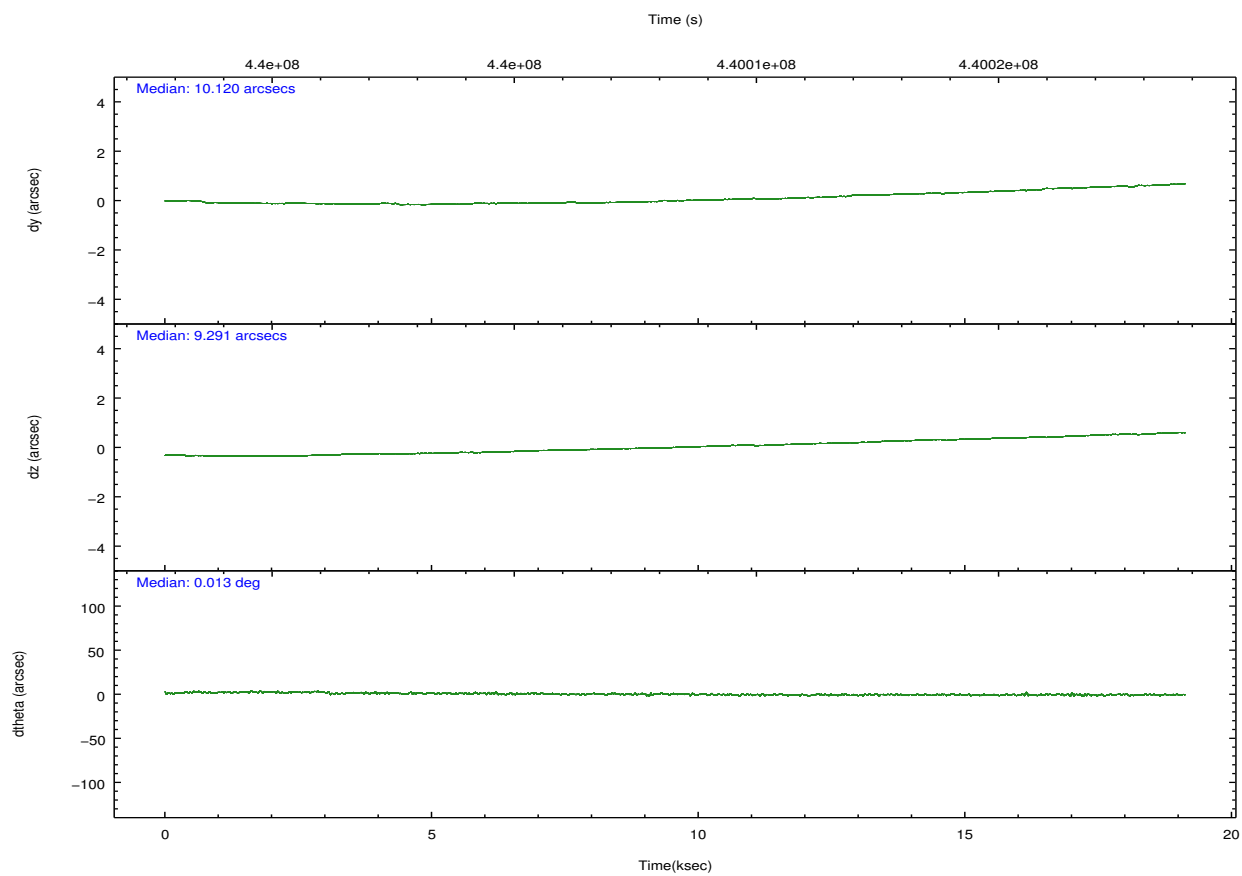
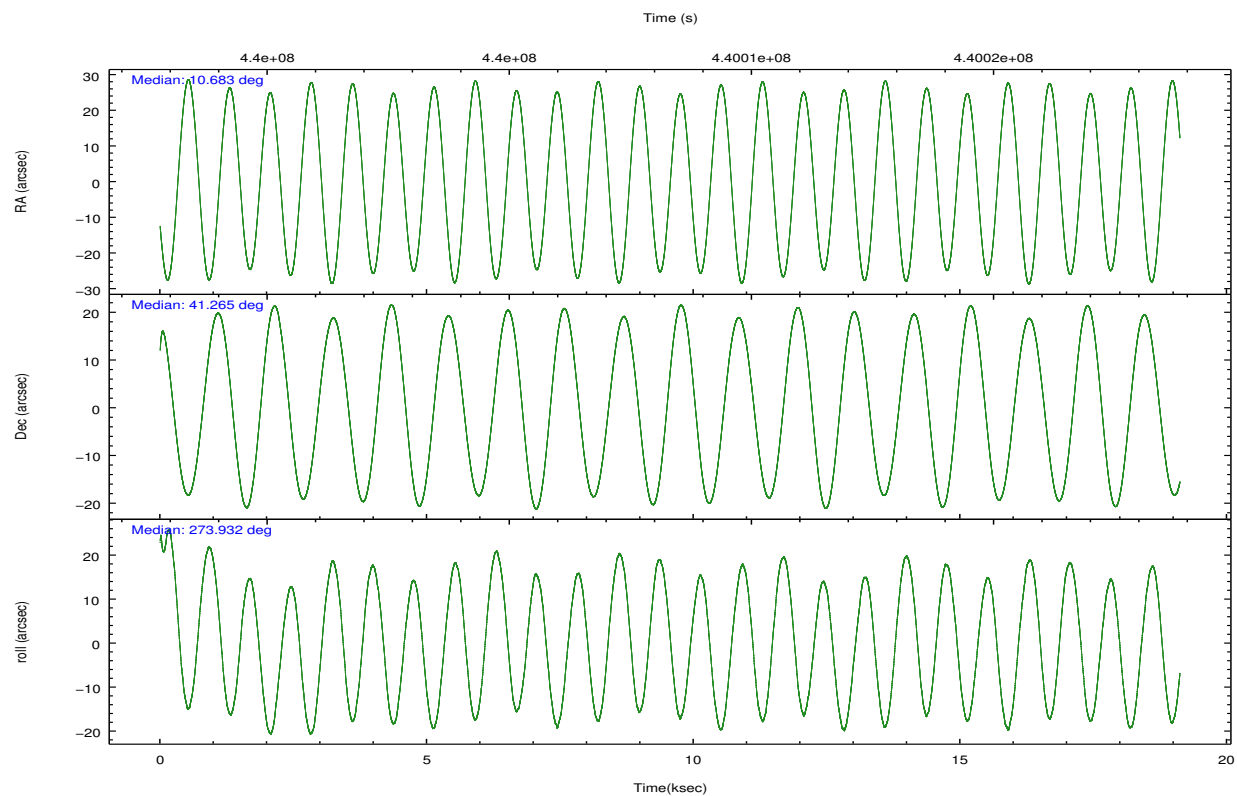
2.2 Compared Parameters

Parameter	Planned	Actual
Instrument	HRC	HRC
Detector	HRC-I	HRC-I
Grating	NONE	NONE
Data mode	OBSERVING	OBSERVING
Observation mode	POINTING	POINTING
[deg] Pointing RA	10.661987	10.68288152934051
[deg] Pointing Dec	41.287461	41.26520599714802
[deg] Pointing Roll	274.041583	273.9323129102103
[mm] SIM focus pos	-1.040293	-1.038866356238299
[mm] SIM defocus	0	0.001426264420575141
[mm] SIM translation stage pos	126.985494	126.9829799899862
[mm] SIM translation stage offset	0	0.002508901615314585
[s] Observation start time (MET)	439998879.184000	439997240.51507
Observation start date	2011-12-11T13:53:33	2011-12-11T13:27:20
[s] Observation end time (MET)	440017879.184000	440019181.15372
Observation end date	2011-12-11T19:10:13	2011-12-11T19:33:01

Parameter	Planned	Actual
Obspar format version number	7	7
Obspar file type	PREDICTED	ACTUAL
Obspar update status	NONE	UPDATED

2.3 Aspect



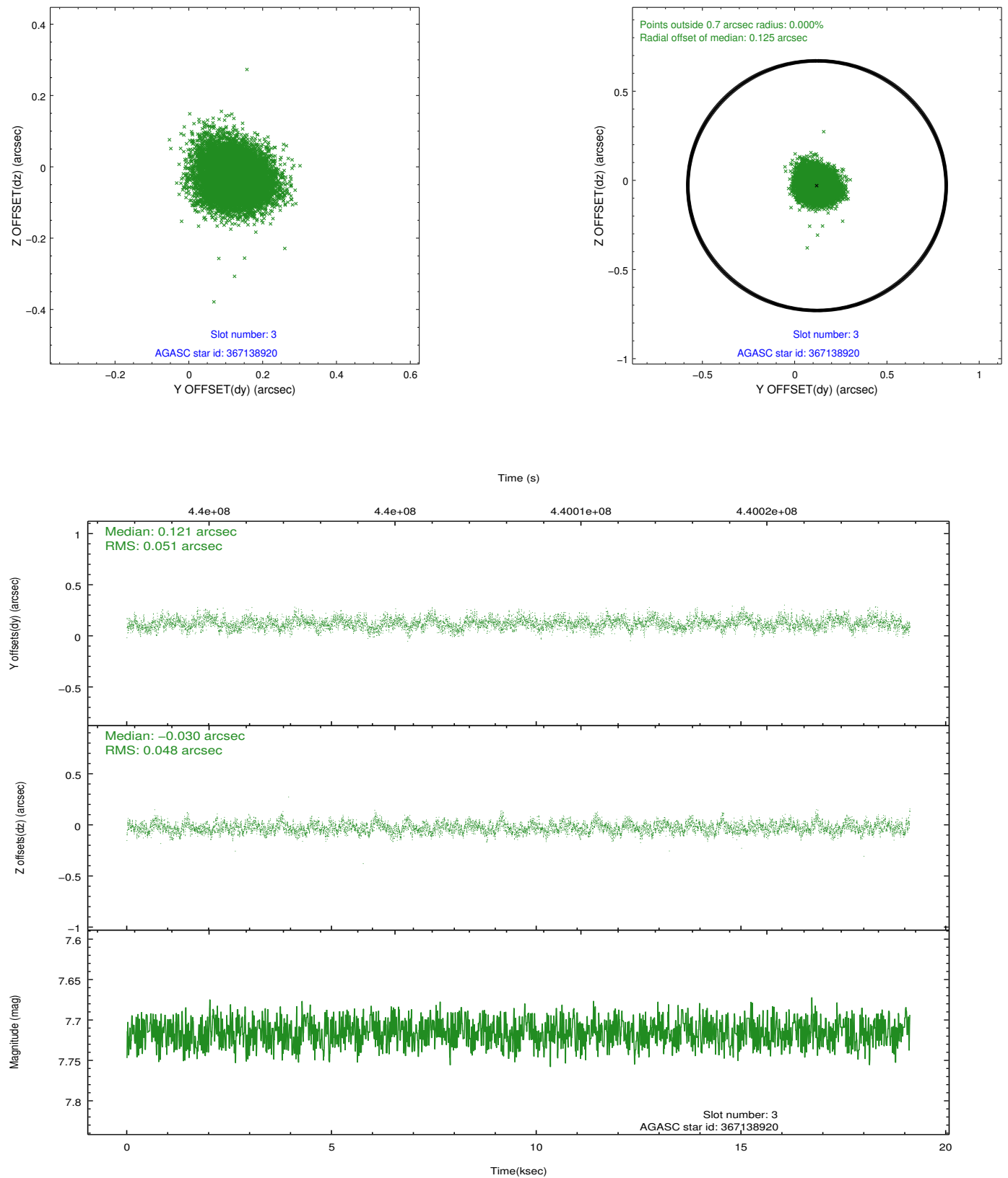


Slot Statistics

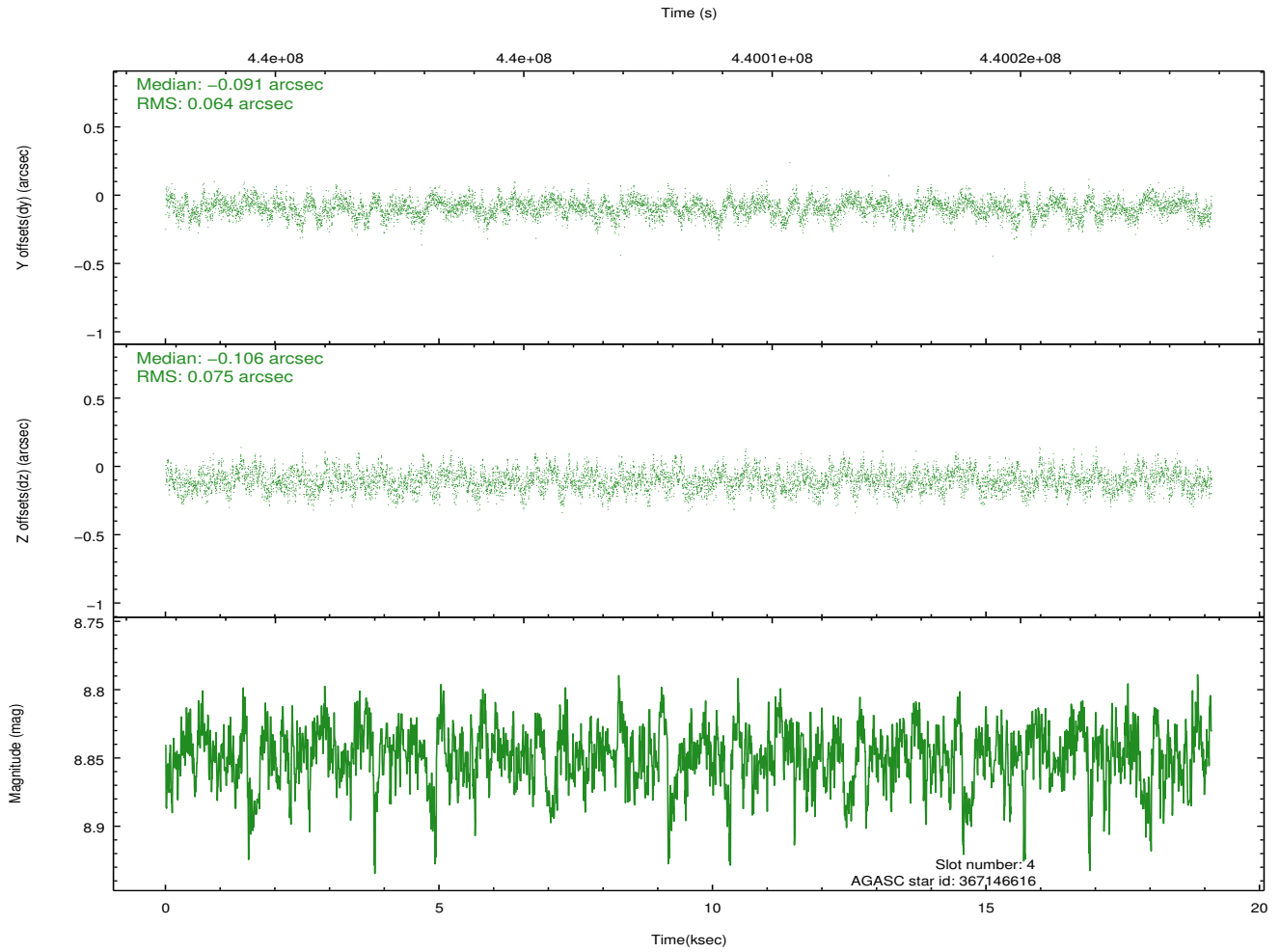
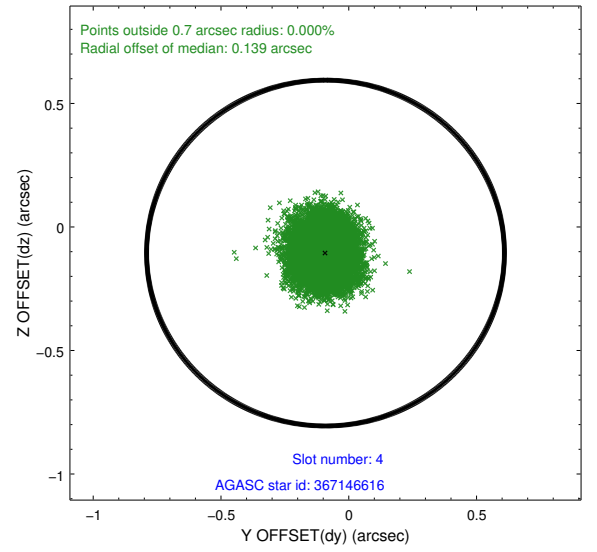
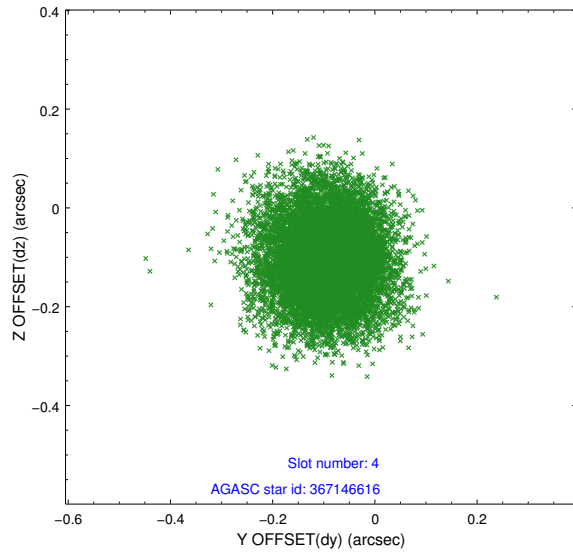
slot	status	id	mag	n_pts	med_dy	med_dz	dr1	dr2	ra	dec	mean_y	mean_z
0	FID	HRC-I-1	6.96	4664	-0.096	-0.053	0.020	0.036	0.000000	0.000000	-766.09	-1297.24
1	FID	HRC-I-2	6.99	4664	0.150	-0.065	0.013	0.021	0.000000	0.000000	846.62	-1299.21
2	FID	HRC-I-4	6.96	4663	0.061	0.025	0.018	0.034	0.000000	0.000000	1277.21	1004.58
3	GUIDE	367138920	7.72	9328	0.121	-0.030	0.075	0.119	11.513485	40.808909	1871.62	2194.90
4	GUIDE	367146616	8.85	9305	-0.091	-0.106	0.106	0.170	11.418645	41.190163	485.06	2020.92
5	GUIDE	367148872	7.24	9329	0.070	0.075	0.076	0.125	10.505940	40.688258	2122.18	-576.77
6	GUIDE	367663272	9.28	9312	-0.090	-0.024	0.118	0.187	10.656279	41.699429	-1479.99	88.22
7	GUIDE	367674552	8.84	9321	-0.015	0.081	0.091	0.149	11.016238	41.570845	-952.46	1024.08

2.4 Star Slots

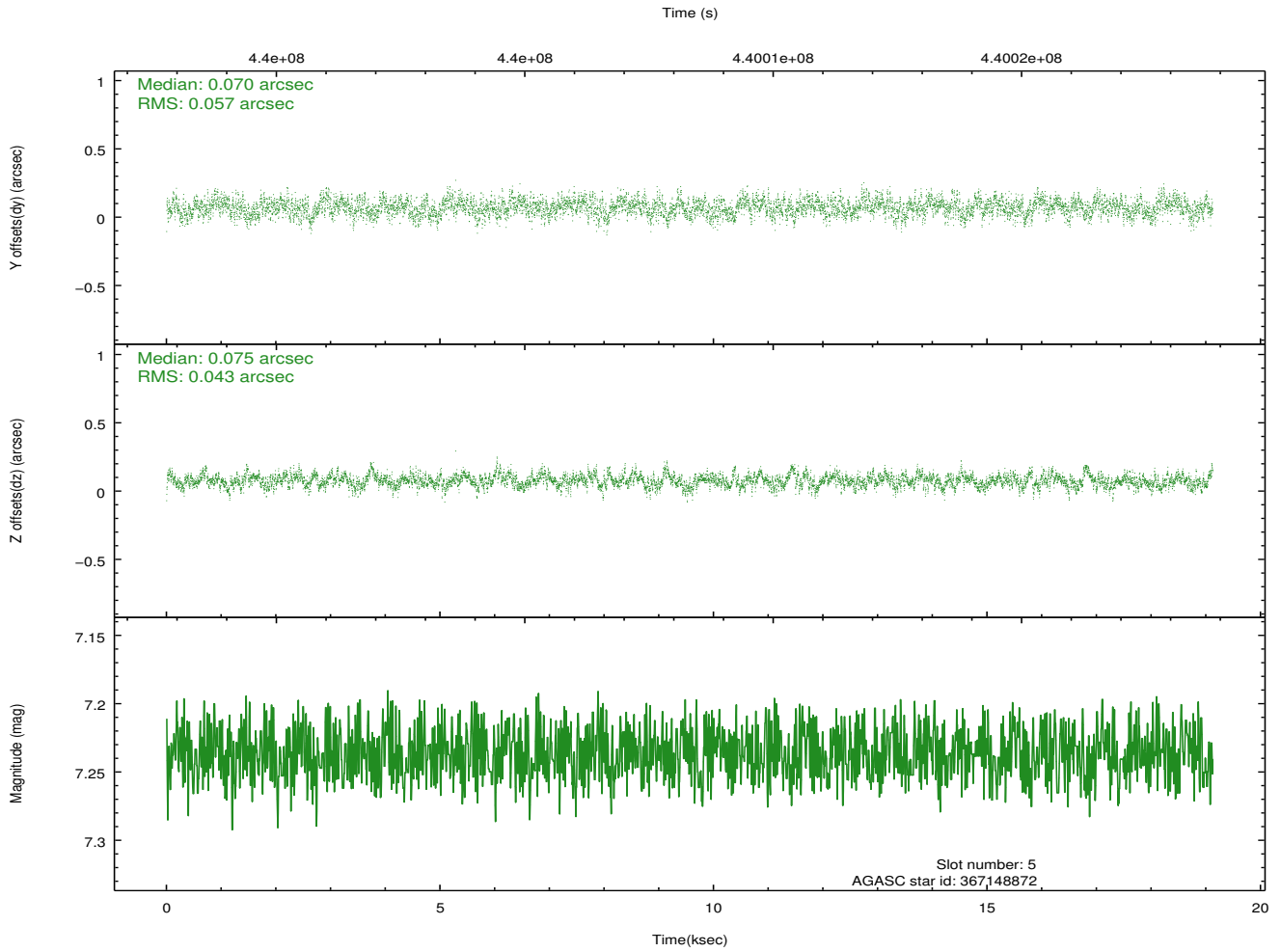
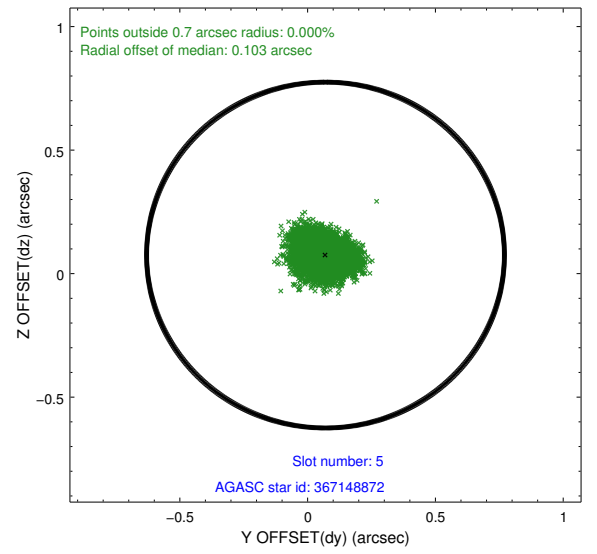
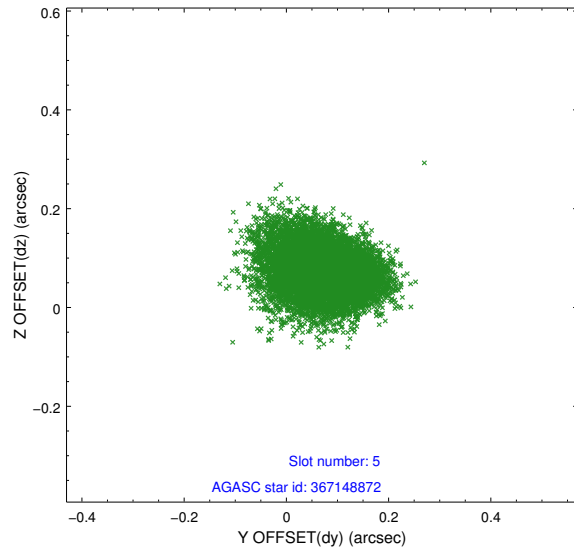
2.4.1 Slot 3



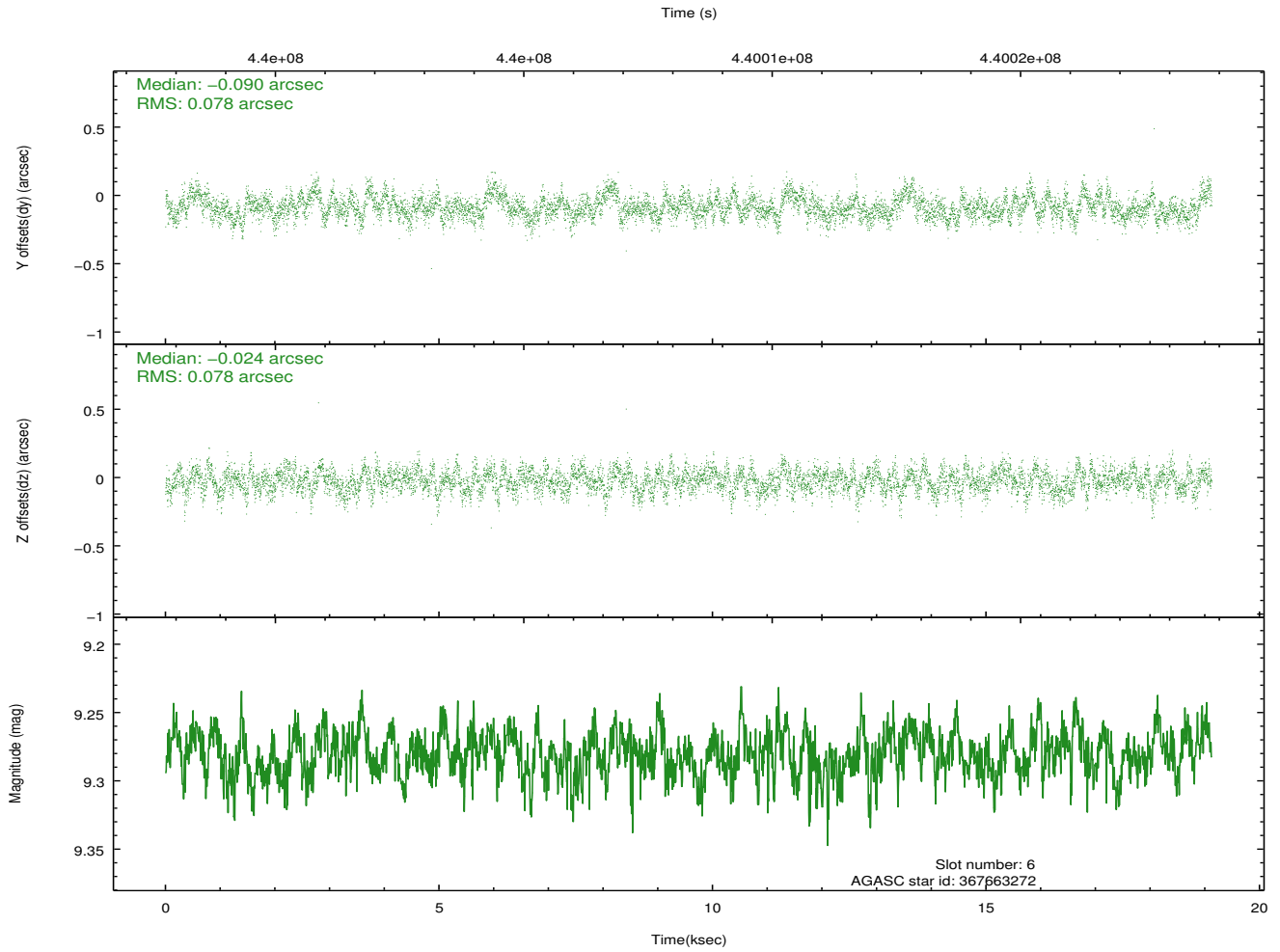
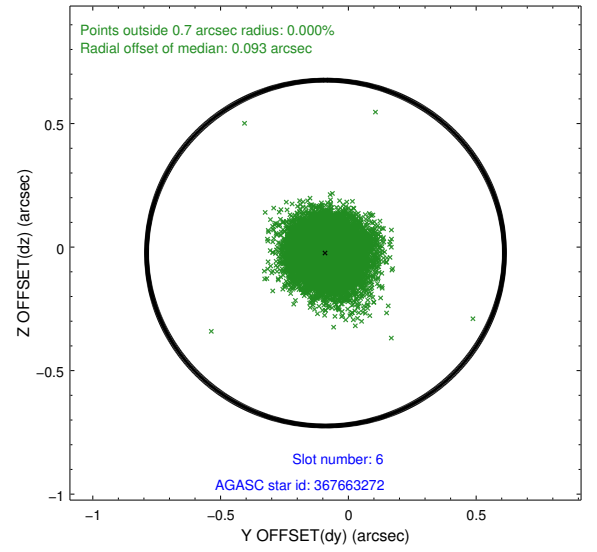
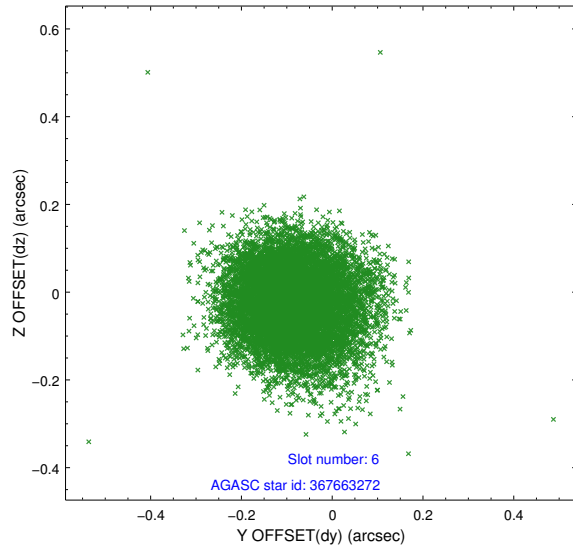
2.4.2 Slot 4



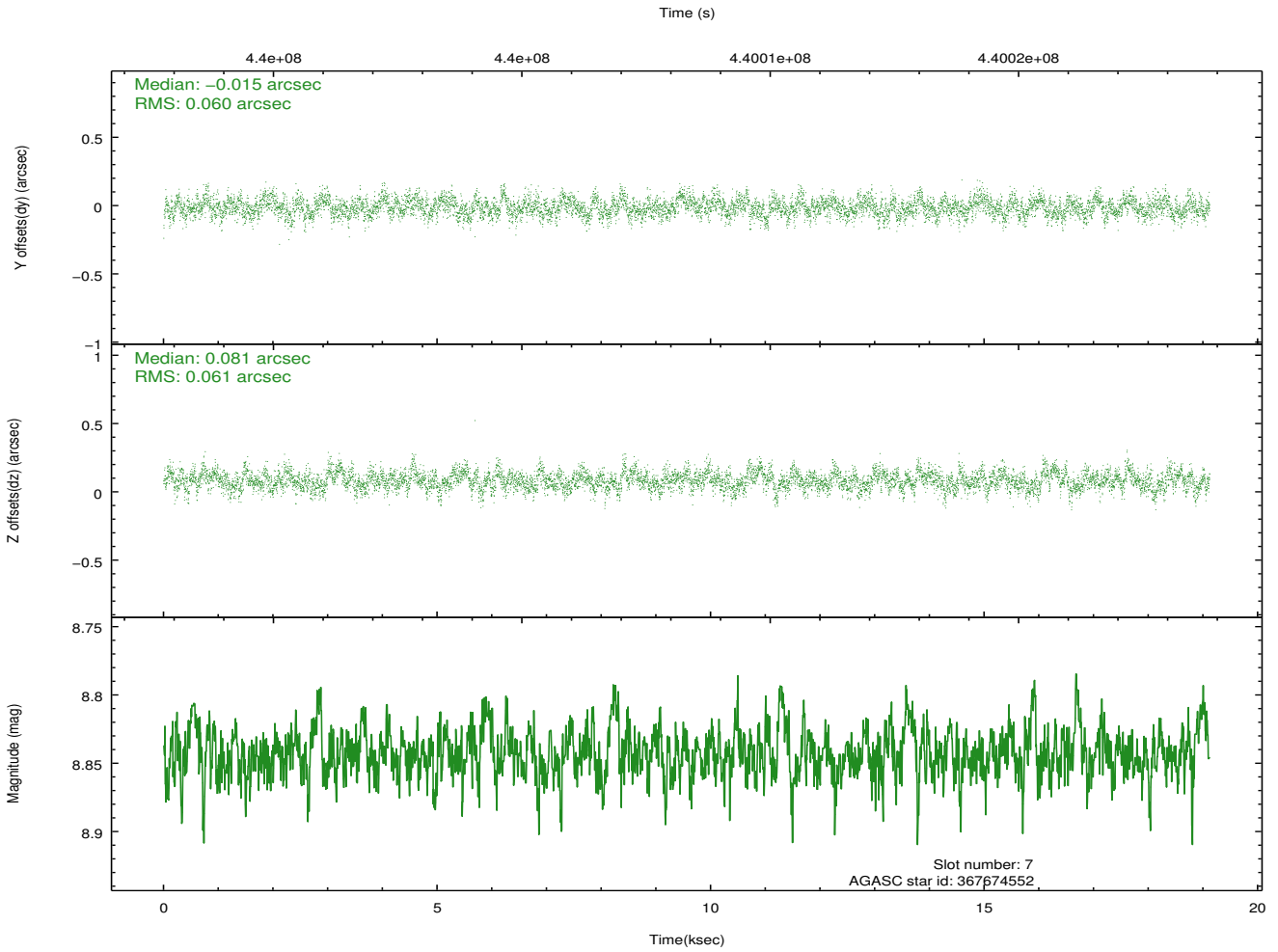
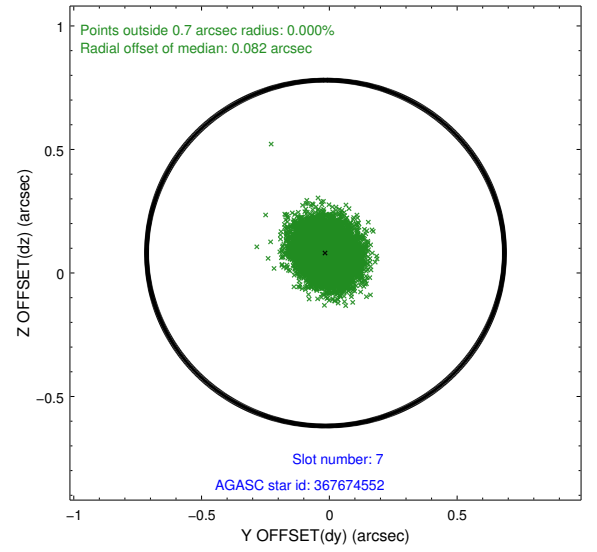
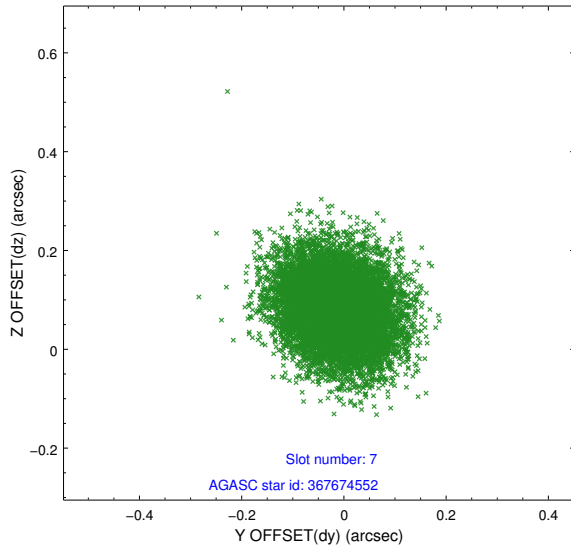
2.4.3 Slot 5



2.4.4 Slot 6

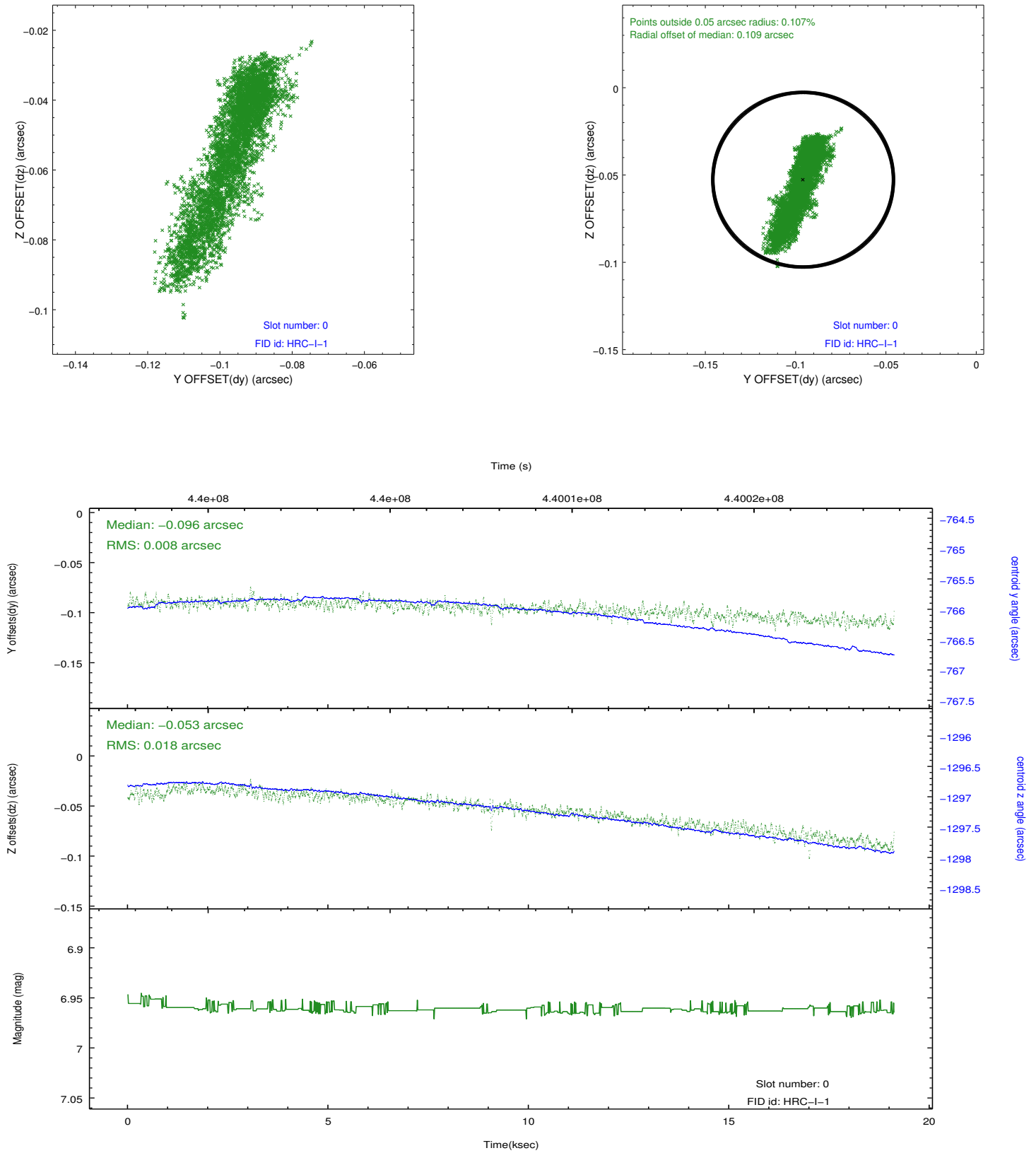


2.4.5 Slot 7

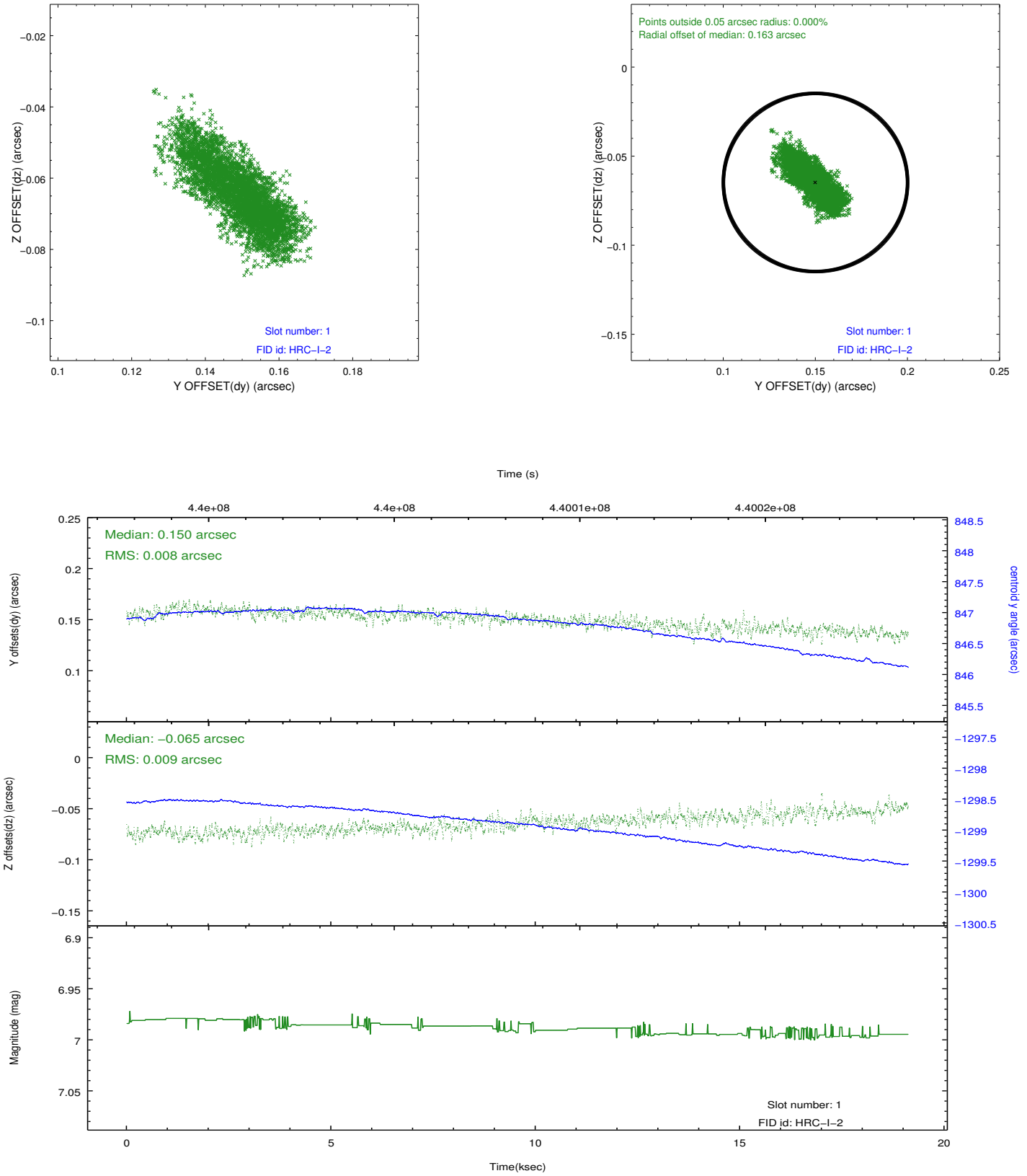


2.5 FID Slots

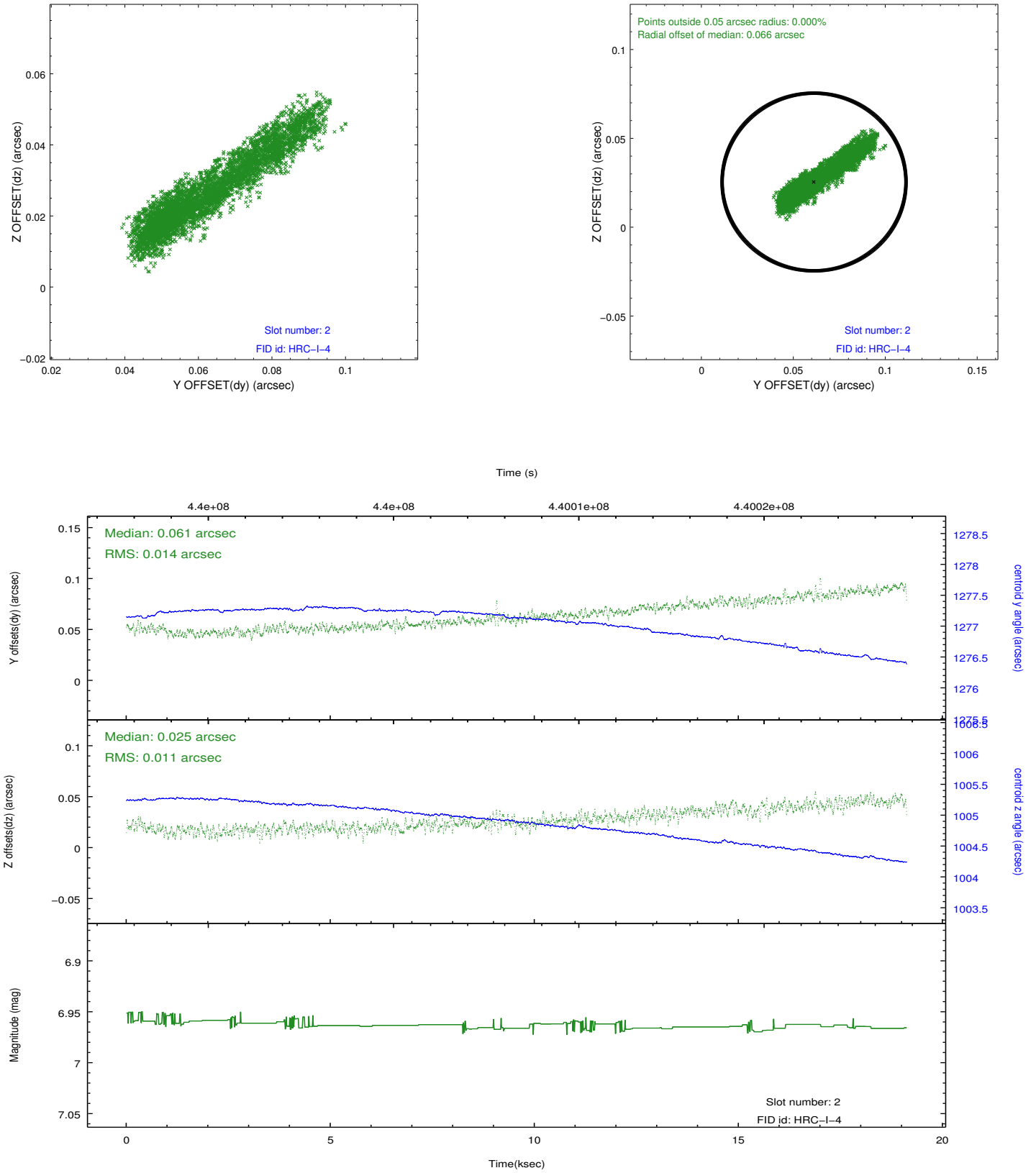
2.5.1 Slot 0



2.5.2 Slot 1



2.5.3 Slot 2



A Summary

A.1 Status

V&V Scientist	Beth Sundheim
V&V Date (YYYY-MM-DD)	2012.07.29
V&V Edition	1
V&V Disposition and Status	OK
V&V Charge Time	19.121632257581

A.2 Comments

Joint proposal with XMM.