

V&V Reference Report

L2 ASCDS Version : 8.4.3.1

Observation 13100 - L2 Version 4
Chandra X-Ray Center

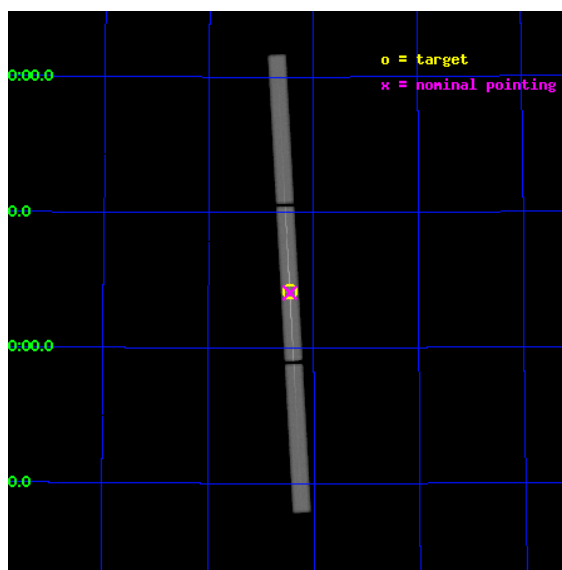
L2 Processing Date : Aug 9 2012

Contents

1	Front	2
2	OBI	3
2.1	OBI	3
2.1.1	Images	3
2.1.2	Parameters	4
2.1.3	Events	4
2.2	Compared Parameters	5
2.3	Aspect	6
2.4	Star Slots	9
2.4.1	Slot 3	9
2.4.2	Slot 4	10
2.4.3	Slot 5	11
2.4.4	Slot 6	12
2.4.5	Slot 7	13
2.5	FID Slots	14
2.5.1	Slot 0	14
2.5.2	Slot 1	15
2.5.3	Slot 2	16
3	Gratings	17
3.1	LETG Arm	17
A	Summary	19
A.1	Status	19
A.2	Comments	19

1 Front

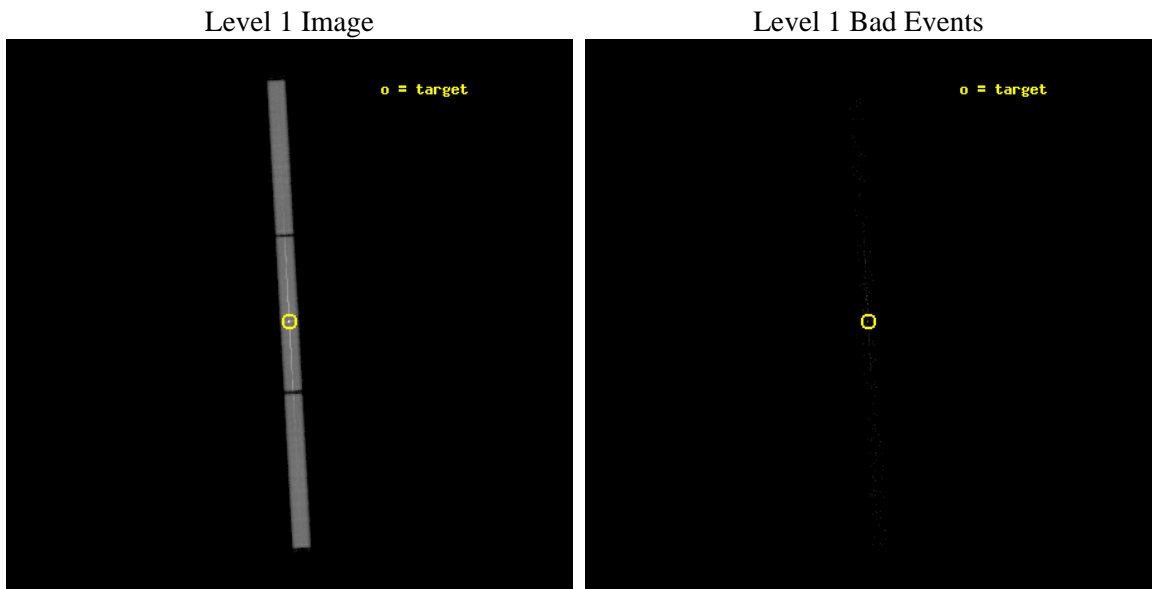
seq_num	790230	Sequence number
obs_id	13100	Observation id
title	AO-12 Calibration Observations of Mkn421	Proposal title
observer	Dr. CXC Calibration	Principal investigator
object	MKN421	Source name
ra_targ	166.113333	Observer's specified target RA [deg]
dec_targ	38.208806	Observer's specified target Dec [deg]
ra_nom	166.11301802497	Nominal RA [deg]
dec_nom	38.20421406212	Nominal Dec [deg]
roll_nom	266.7632233368	Nominal Roll [deg]
revision	4	Processing version of data
ontime	10145.706778467	[s]
livetime	10054.021243896	Ontime multiplied by DTCOR
l2events	844669	Number of level 2 events



2 OBI

2.1 OBI

2.1.1 Images



2.1.2 Parameters

obi_num	0	Obi number	sched_exp_time	10000.000000	[s] Scheduled observation exposure time
ascdsver	8.4.5	Processing system revision	ontime	10145.706778467	[s]
caldsver	4.5.1.1	 	l1events	1046262	Number of level 1 events
date	2012-08-10T01:01:41	Date and time of file creation			
revision	4	Processing version of data			

2.1.3 Events

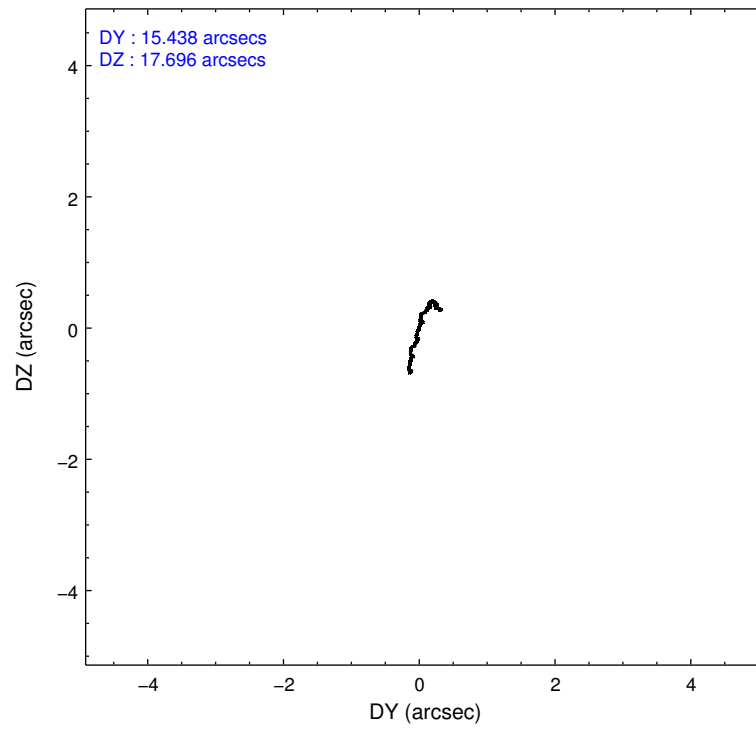
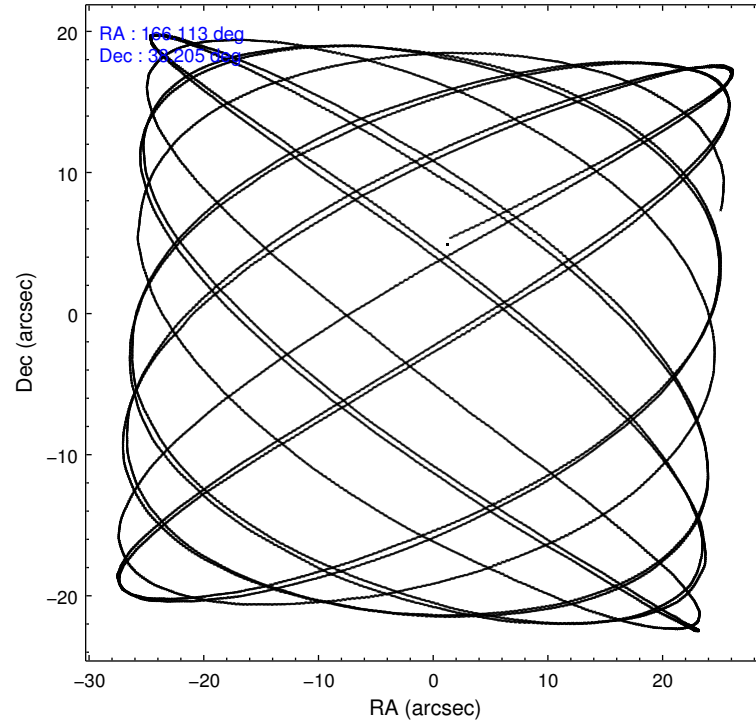
Level 1 Events

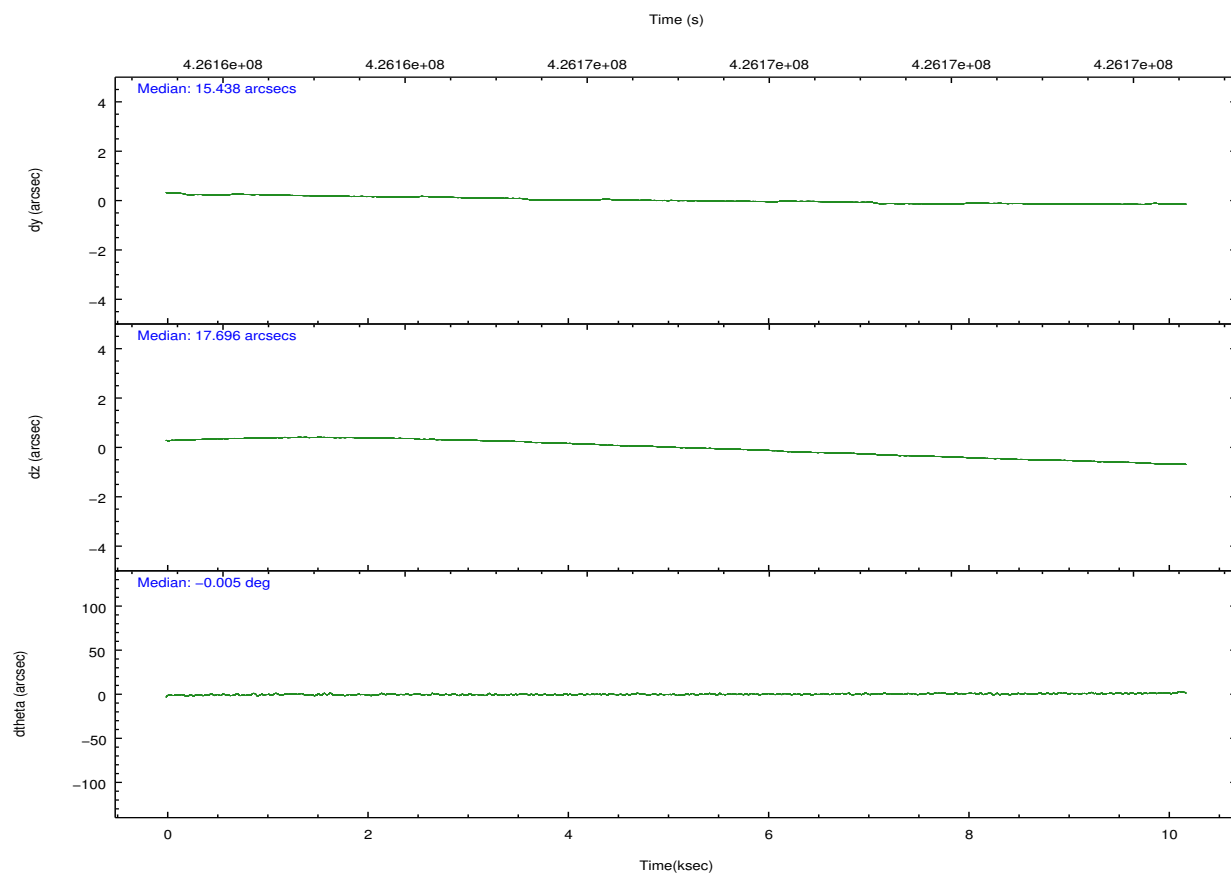
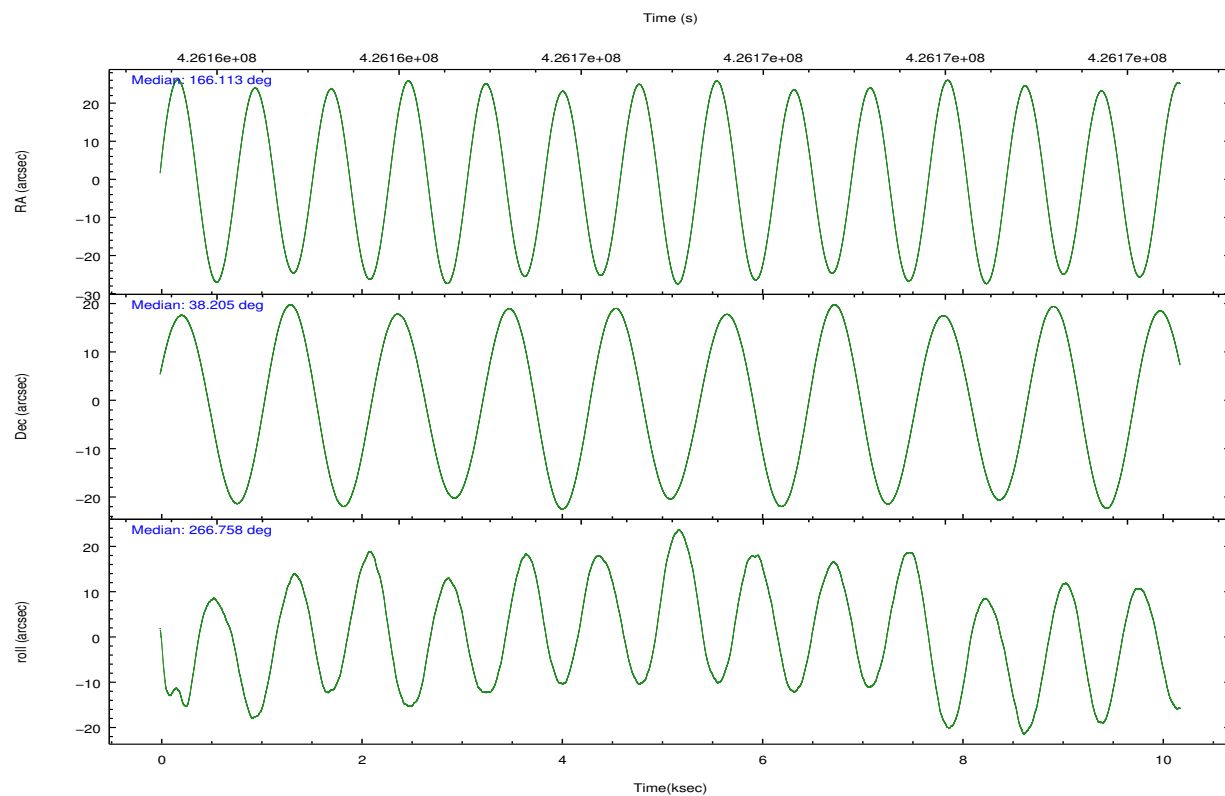
	segment 1	segment 2	segment 3
level 1 events	300416	439155	306691
rejected events	968	1595	1220
rejected %	0%	0%	0%

2.2 Compared Parameters

Parameter	Planned	Actual	Parameter	Planned	Actual
Instrument	HRC	HRC	Obspar format version number	7	7
Detector	HRC-S	HRC-S	Obspar file type	PREDICTED	ACTUAL
Grating	LETG	LETG	Obspar update status	NONE	UPDATED
Data mode	OBSERVING	OBSERVING			
Observation mode	POINTING	POINTING			
[deg] Pointing RA	166.094837	166.1130180249657			
[deg] Pointing Dec	38.229007	38.20421406212023			
[deg] Pointing Roll	266.707148	266.7632233367983			
[mm] SIM focus pos	-1.429586	-1.428180813131781			
[mm] SIM defocus	0.1037507710433287	0.1051558262725154			
[mm] SIM translation stage pos	250.455976	250.466033080201			
[mm] SIM translation stage offset	0	-0.01005468664627074			
[s] Observation start time (MET)	426162055.184000	426161589.98639			
Observation start date	2011-07-04T10:19:49	2011-07-04T10:13:09			
[s] Observation end time (MET)	426172055.184000	426172318.14945			
Observation end date	2011-07-04T13:06:29	2011-07-04T13:11:58			

2.3 Aspect



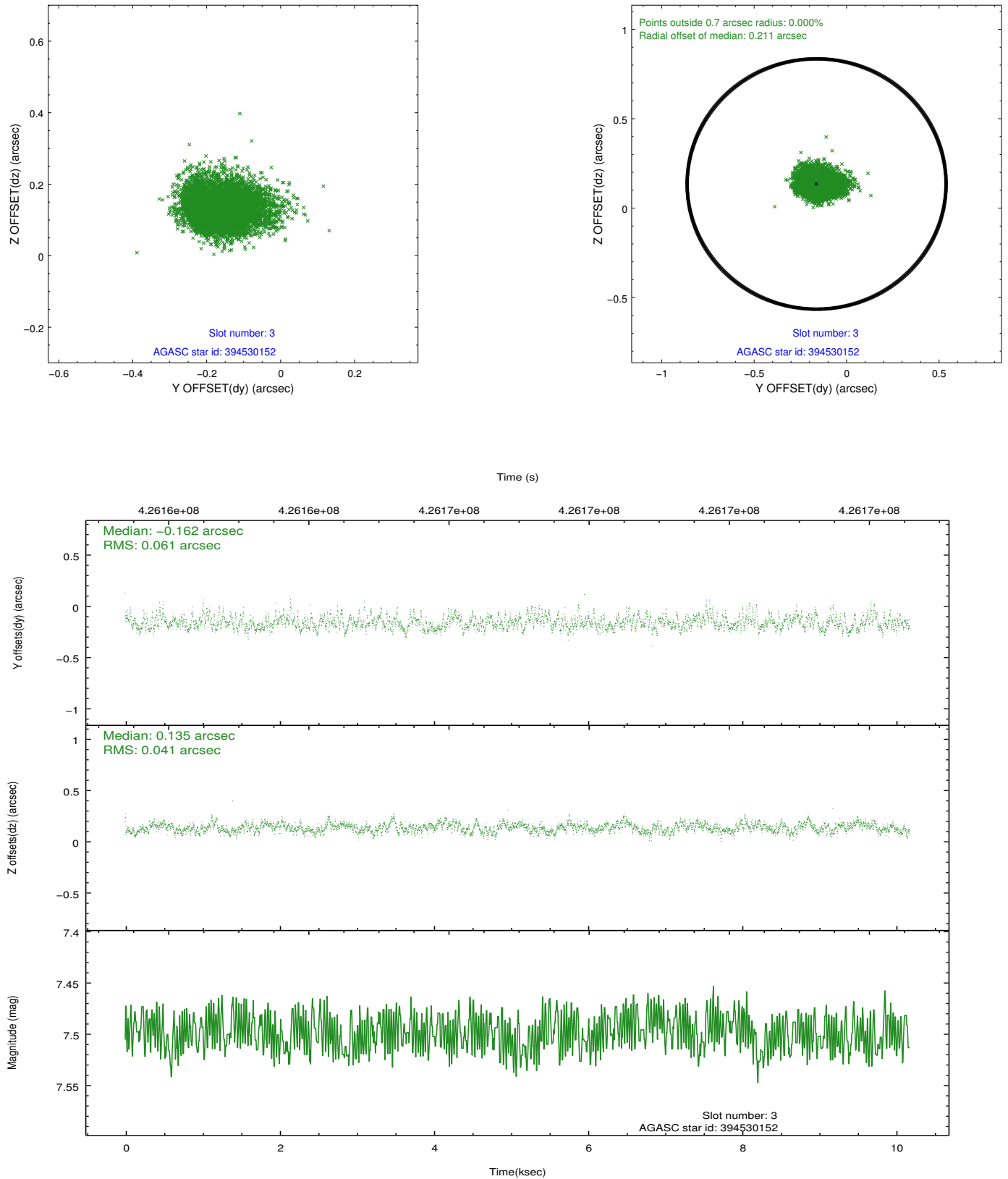


Slot Statistics

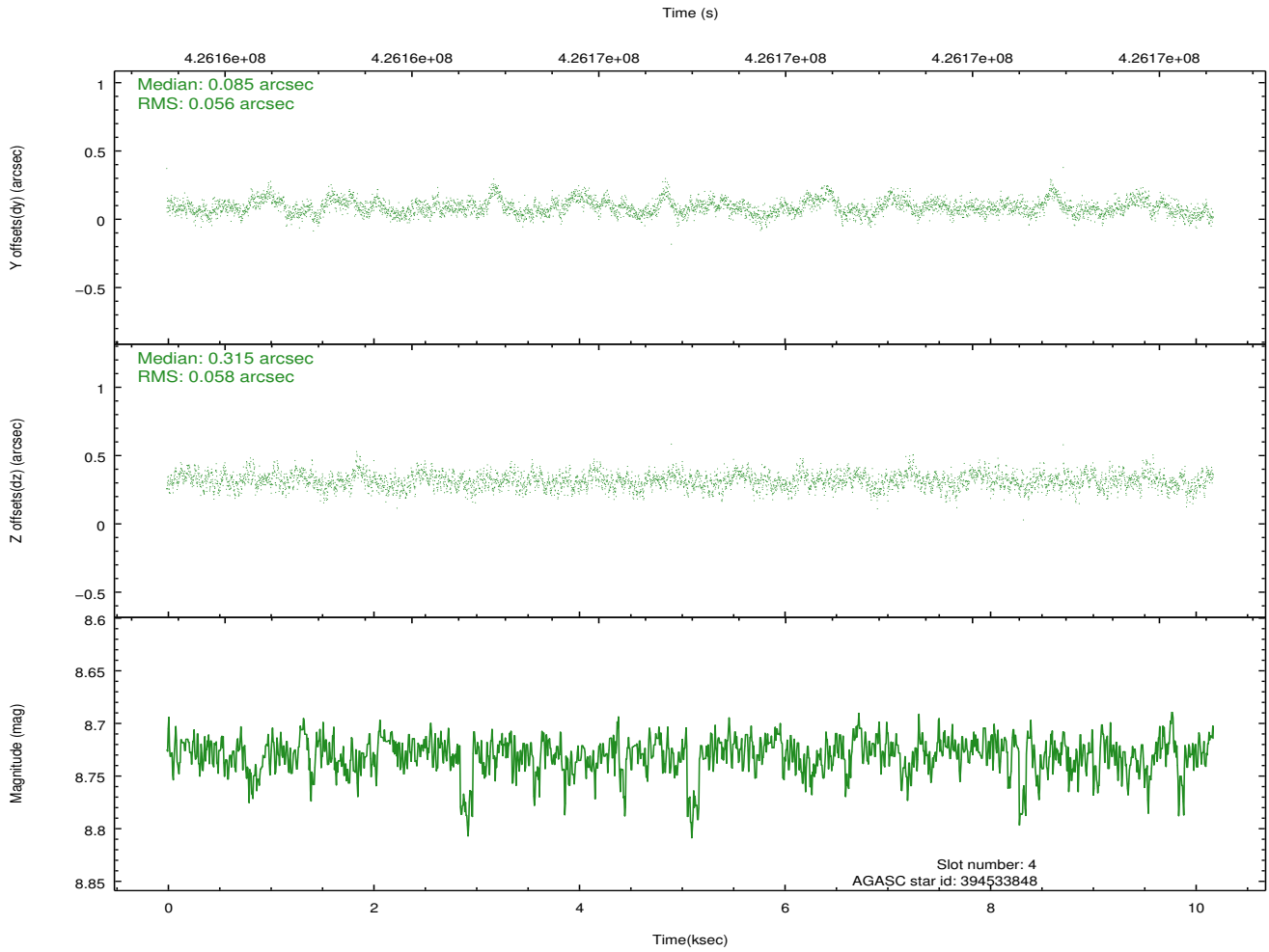
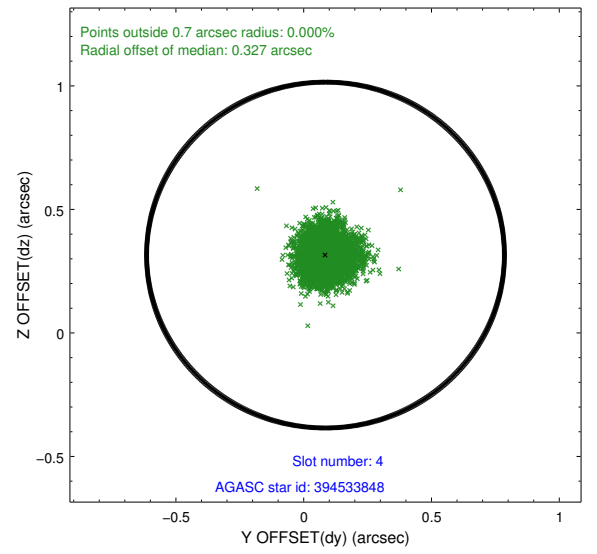
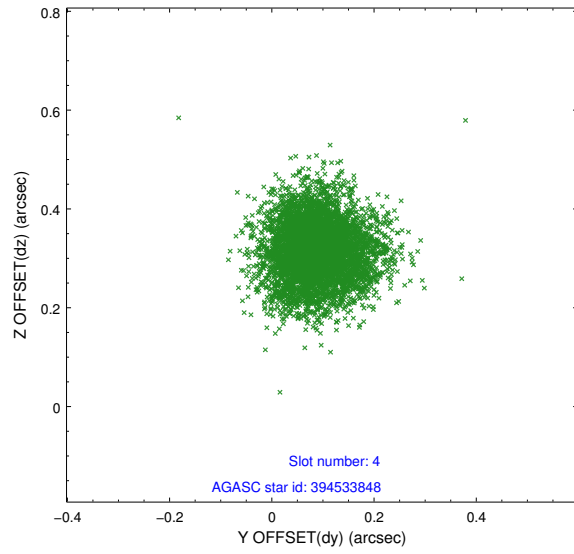
slot	status	id	mag	n_pts	med_dy	med_dz	dr1	dr2	ra	dec	mean_y	mean_z
0	FID	HRC-S-1	6.99	2484	0.047	-0.154	0.013	0.018	0.000000	0.000000	-1169.89	-466.61
1	FID	HRC-S-2	6.98	2484	0.225	-0.106	0.006	0.012	0.000000	0.000000	1229.50	-459.33
2	FID	HRC-S-3	7.01	2484	0.117	-0.043	0.015	0.021	0.000000	0.000000	-1172.07	562.84
3	GUIDE	394530152	7.50	4968	-0.162	0.135	0.077	0.129	166.075805	38.868252	-2293.66	-185.62
4	GUIDE	394533848	8.73	4966	0.085	0.315	0.086	0.138	166.382906	38.276007	-216.96	799.23
5	GUIDE	394543960	9.78	4944	0.183	0.190	0.148	0.243	165.802757	37.787371	1634.78	-737.97
6	GUIDE	394546712	6.60	4967	-0.171	0.248	0.077	0.125	166.451462	38.394357	-652.78	969.33
7	GUIDE	394546720	6.41	4967	0.053	-0.889	0.109	0.174	166.130115	38.241361	-49.33	96.23

2.4 Star Slots

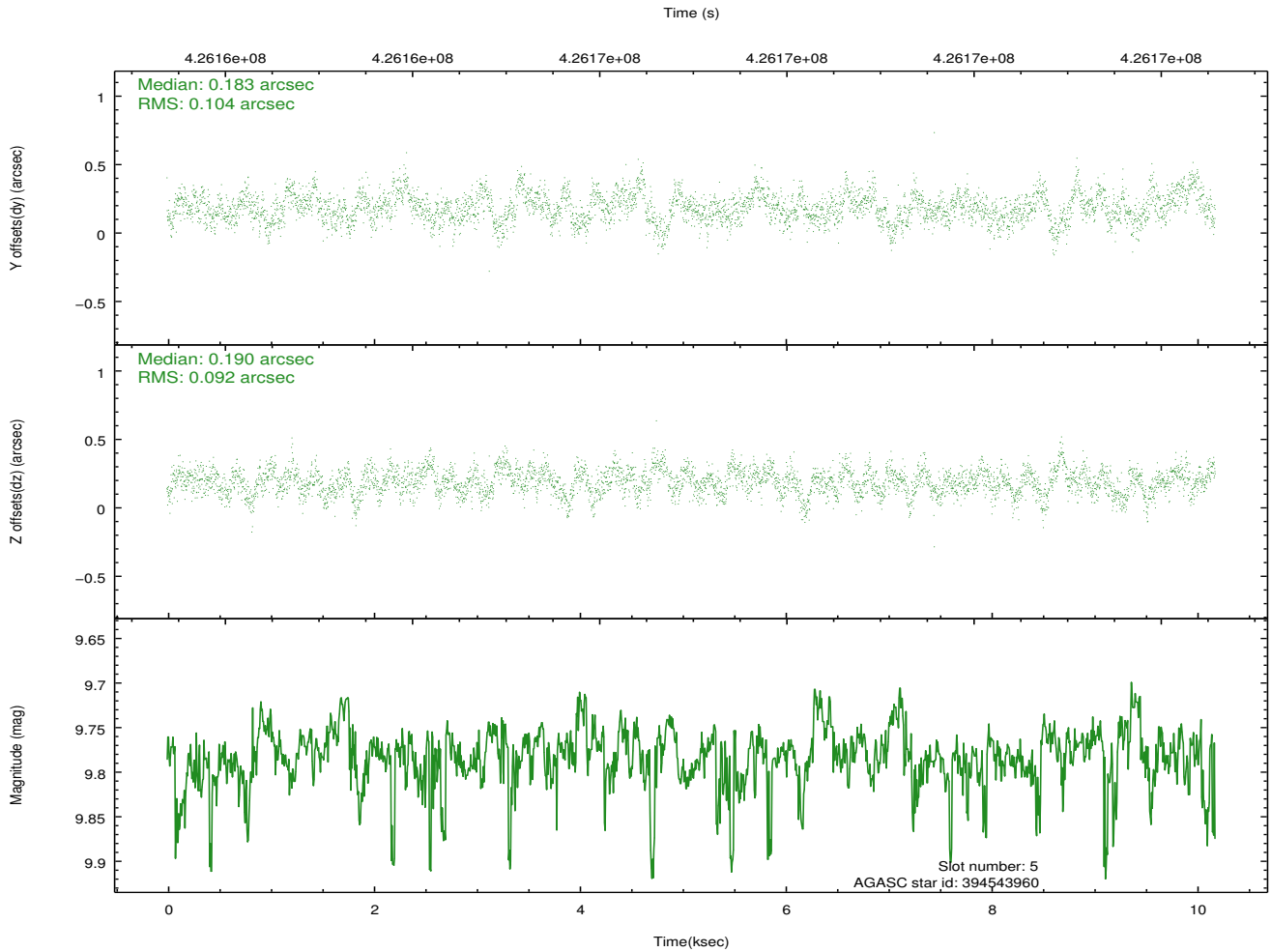
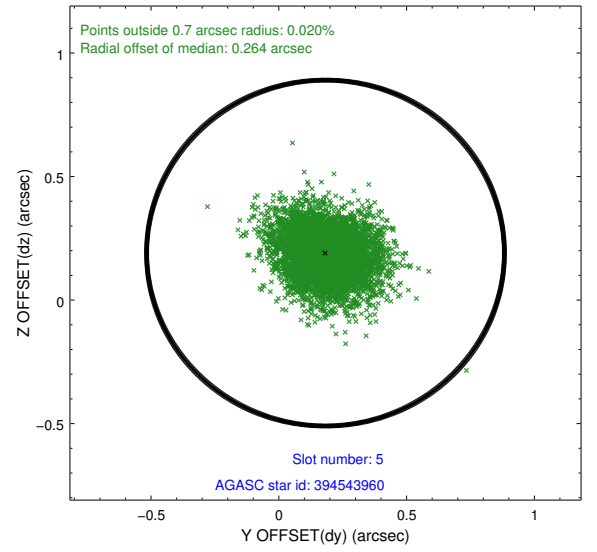
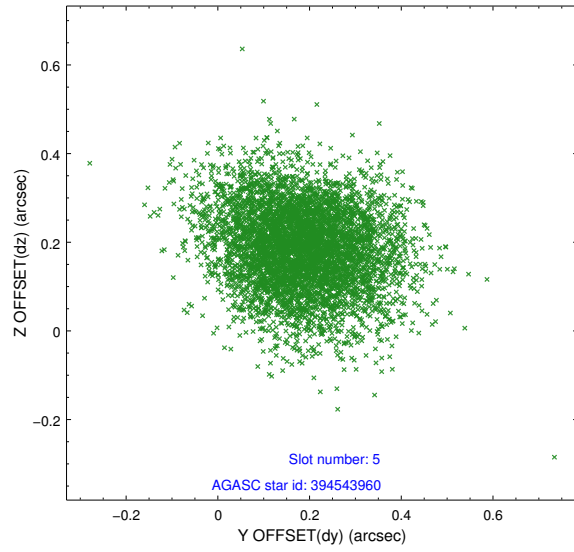
2.4.1 Slot 3



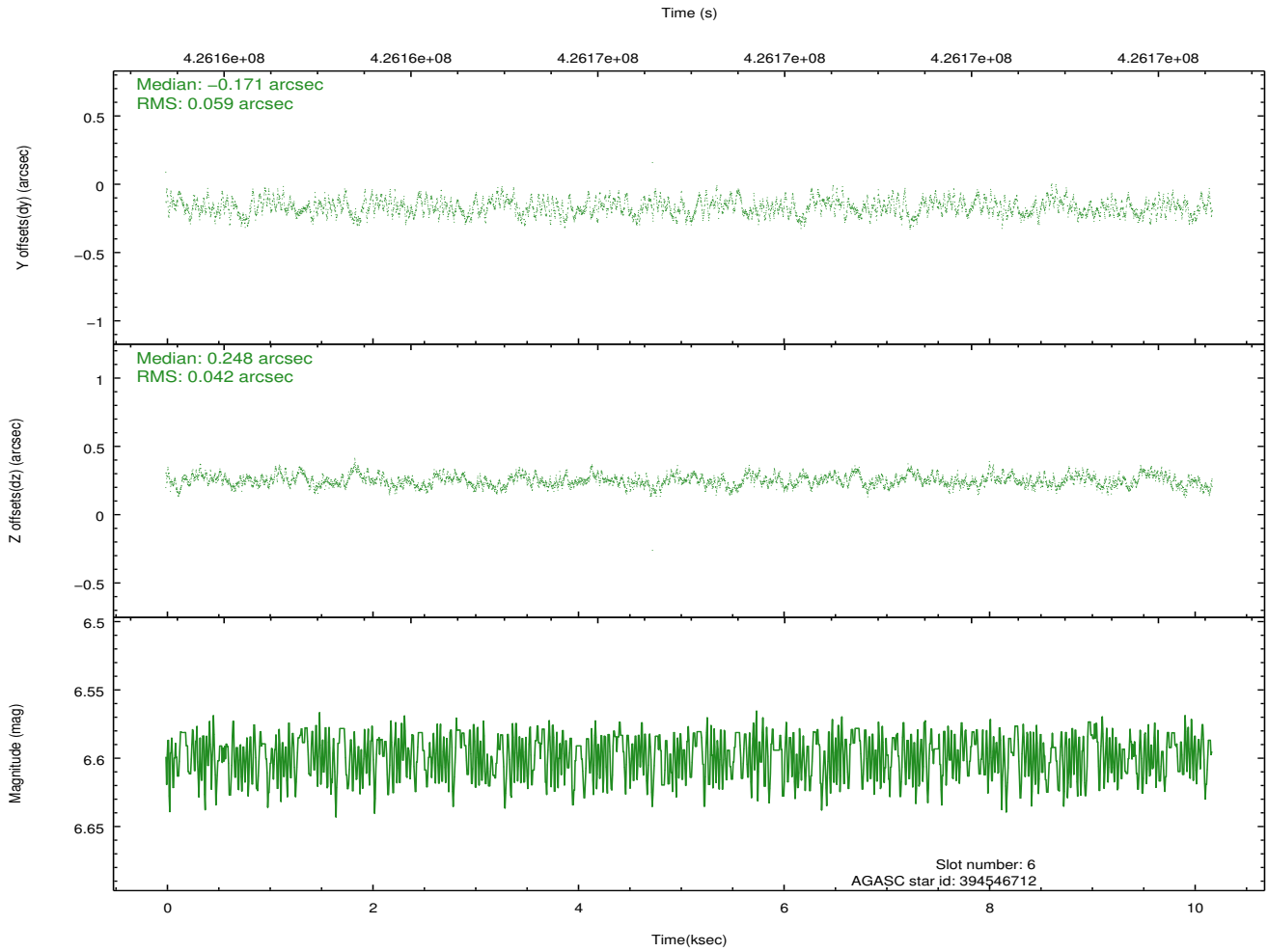
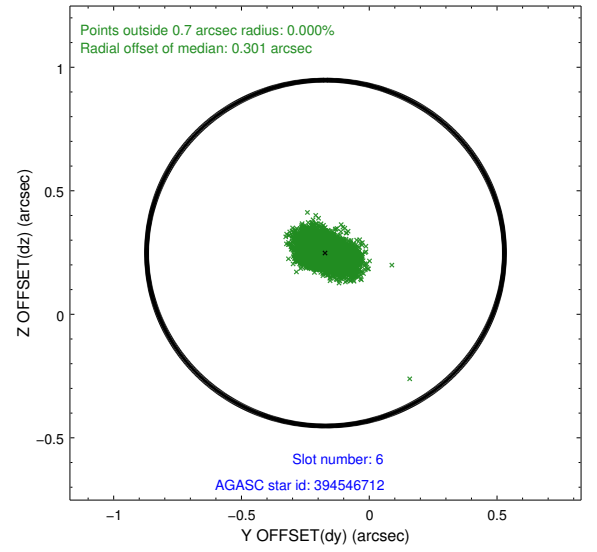
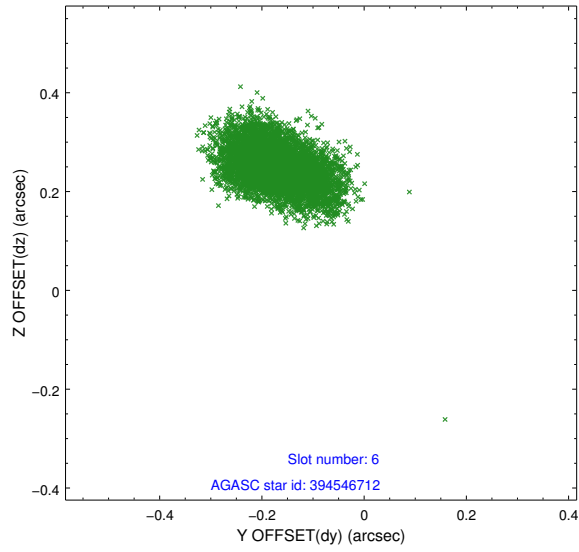
2.4.2 Slot 4



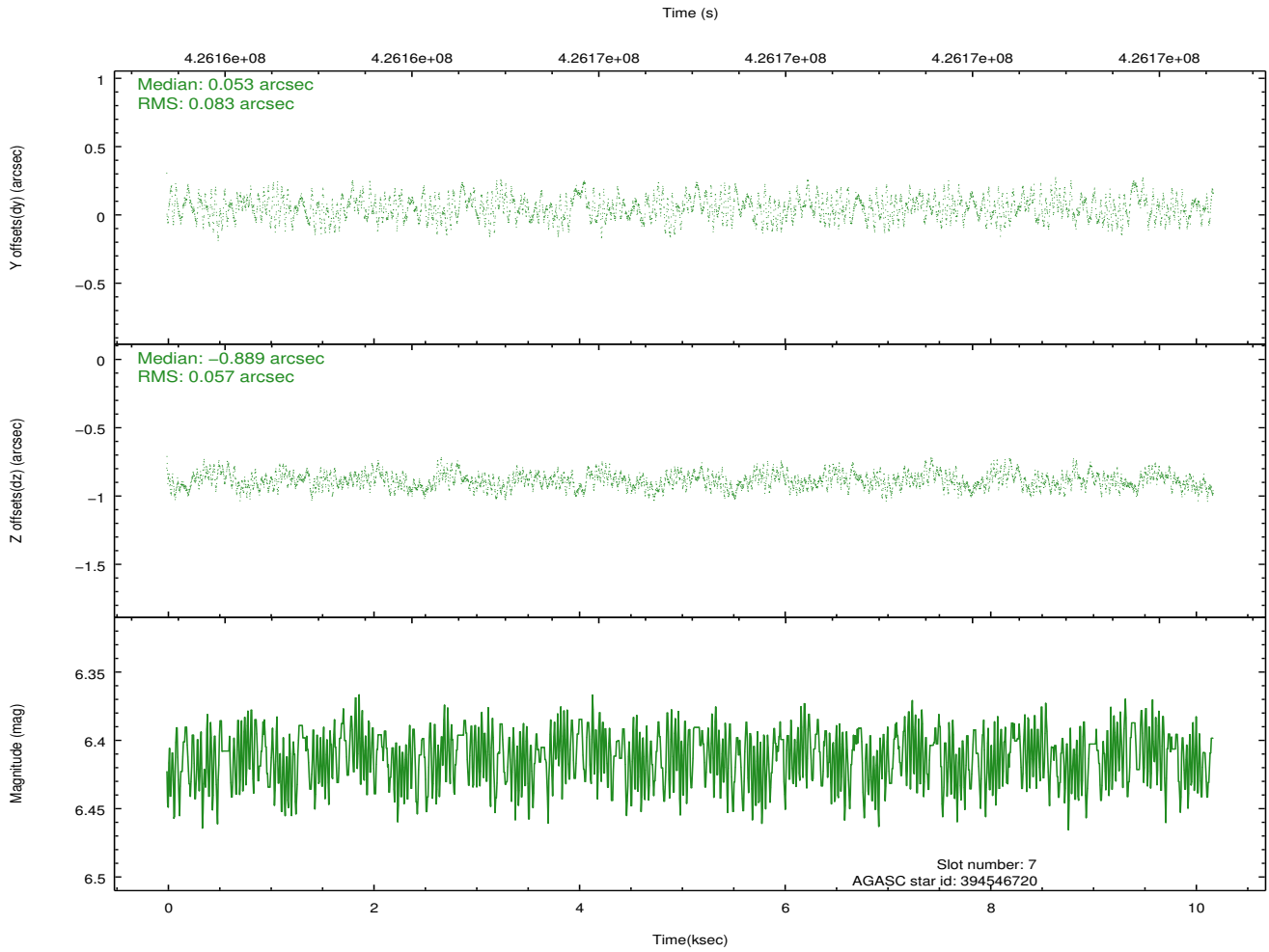
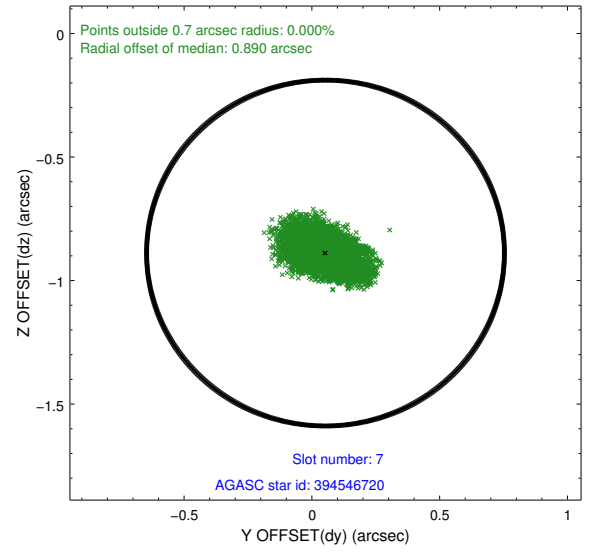
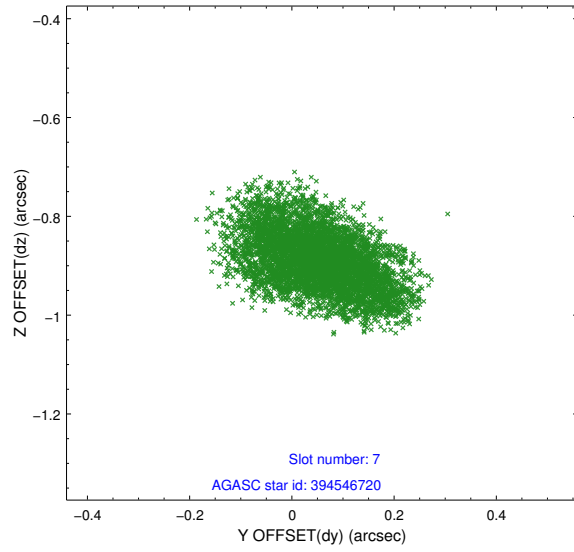
2.4.3 Slot 5



2.4.4 Slot 6

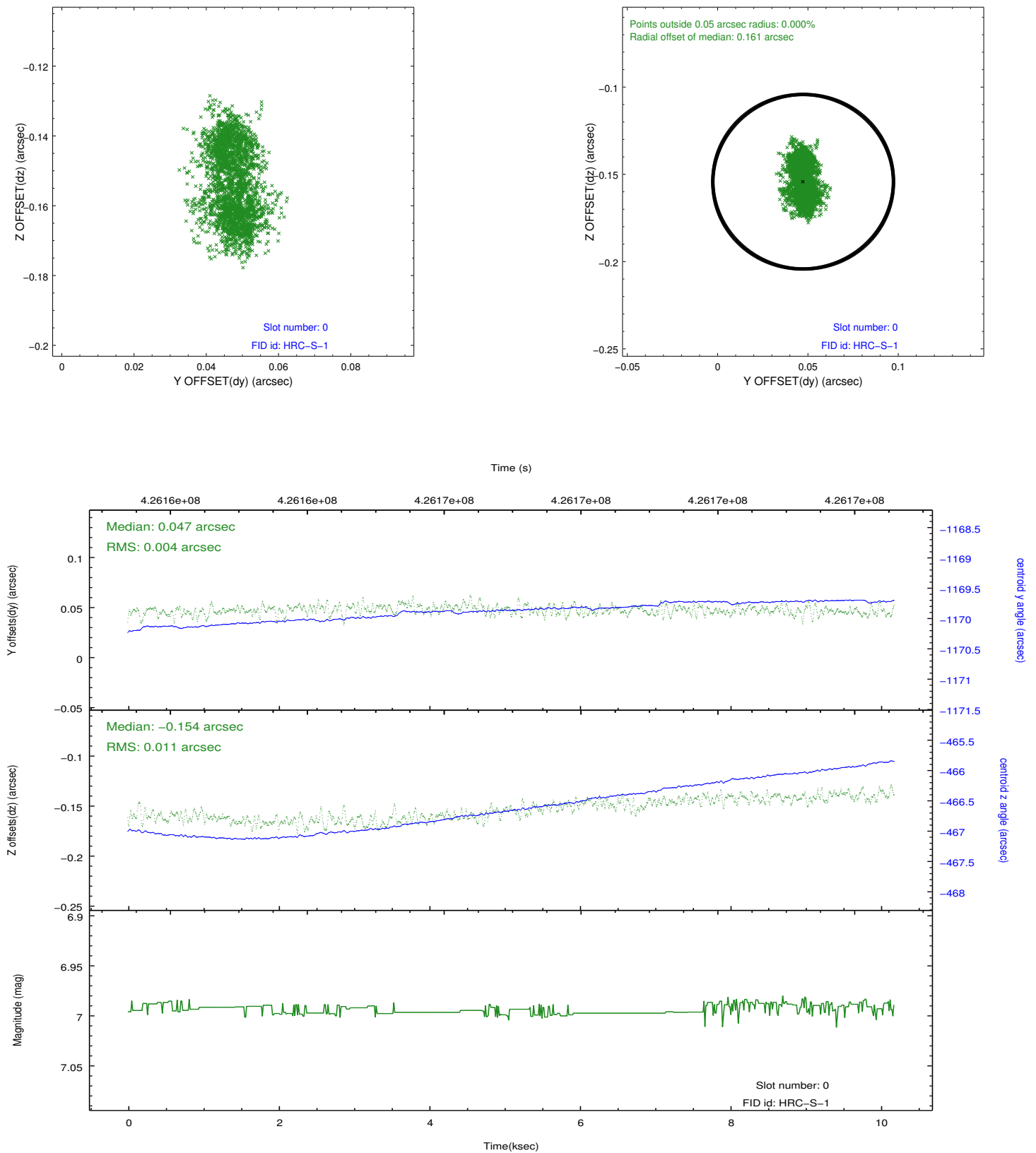


2.4.5 Slot 7

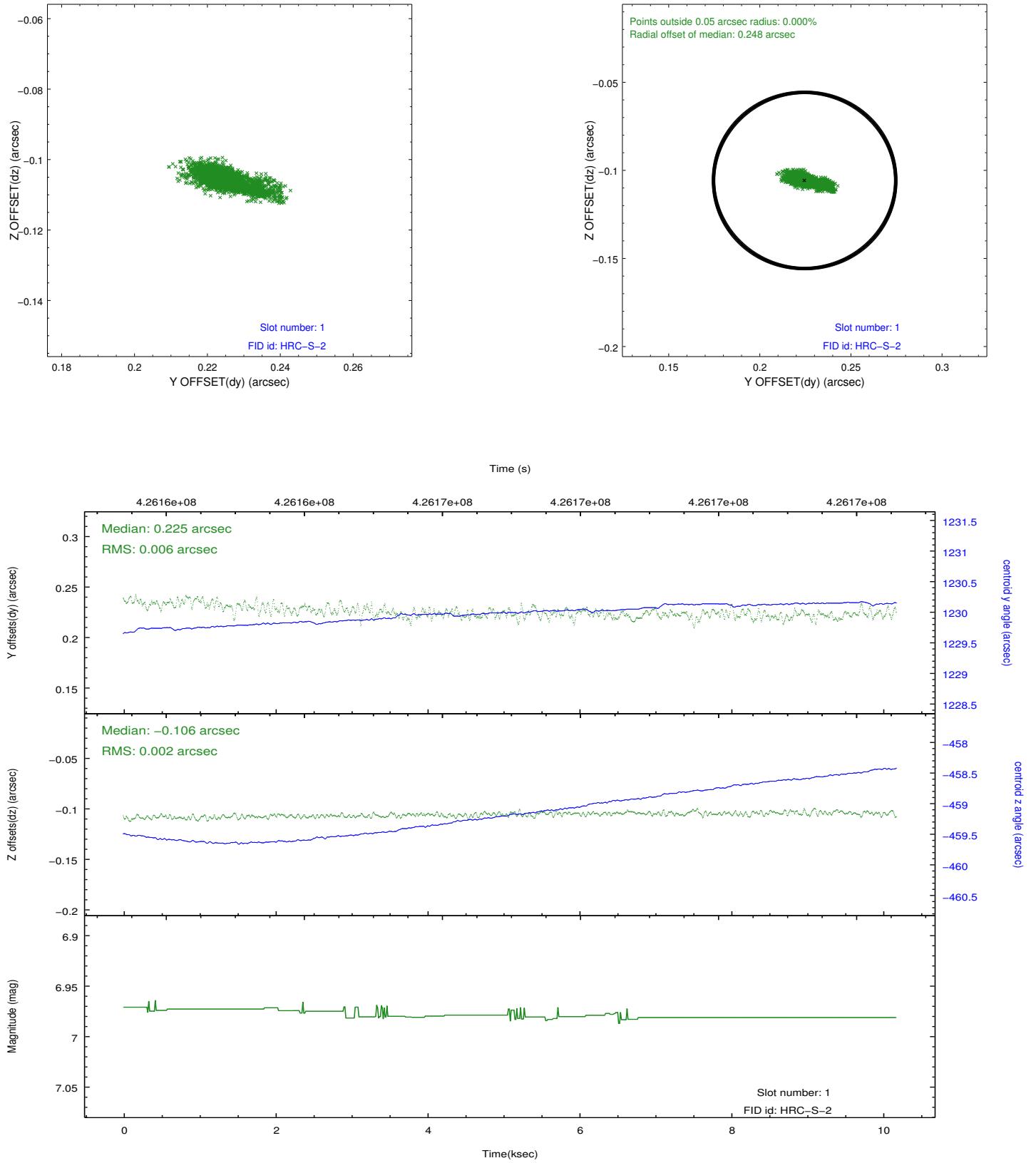


2.5 FID Slots

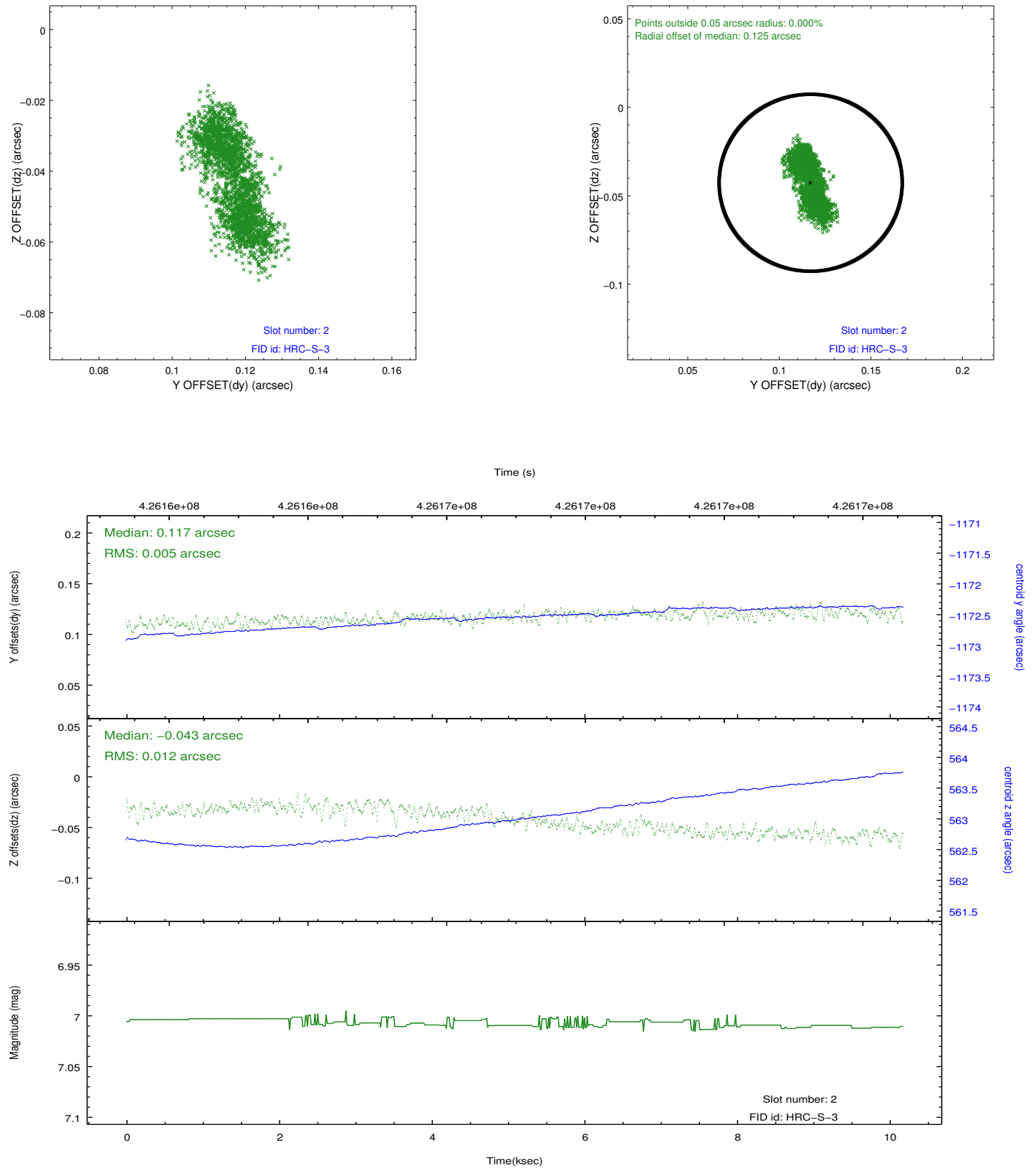
2.5.1 Slot 0



2.5.2 Slot 1

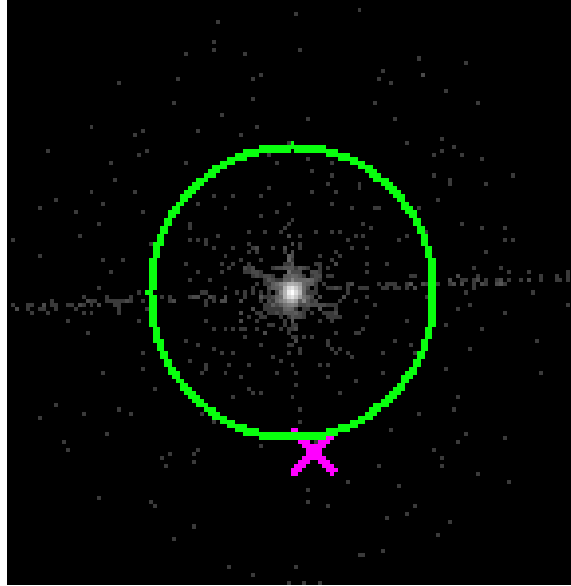


2.5.3 Slot 2

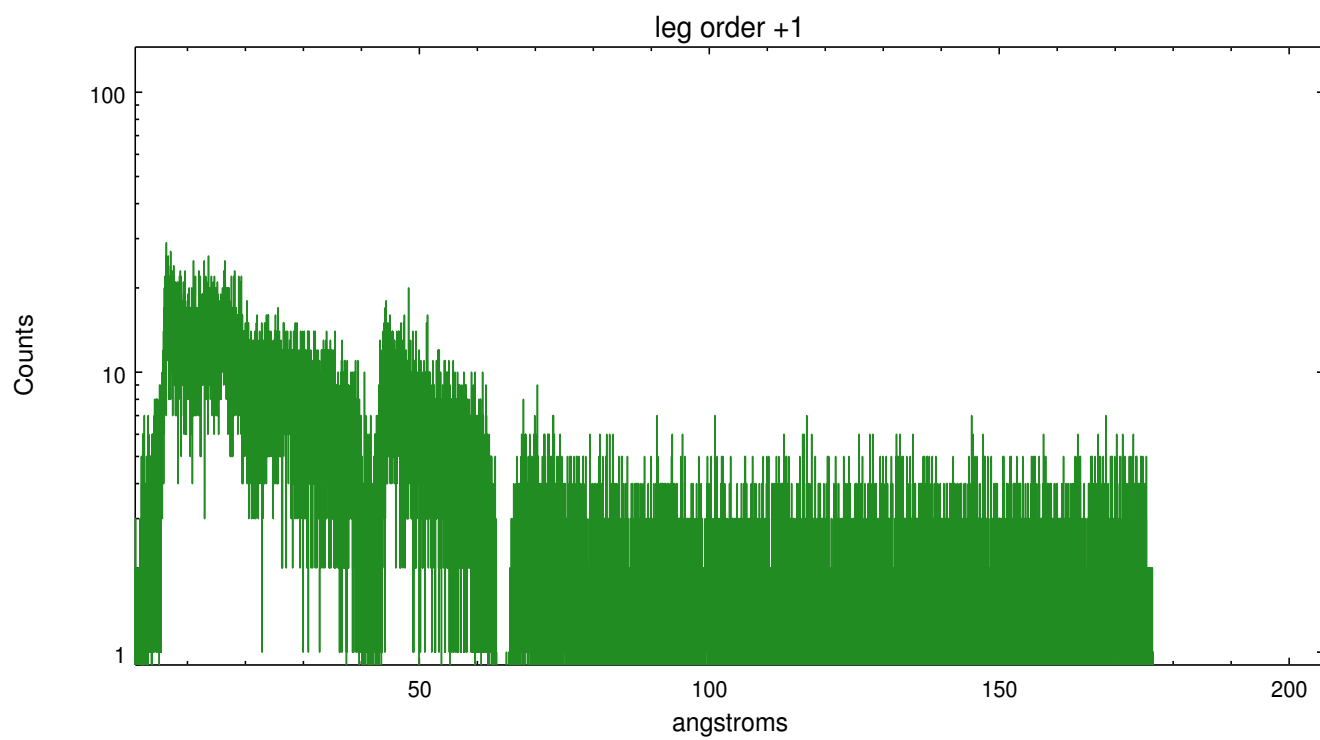
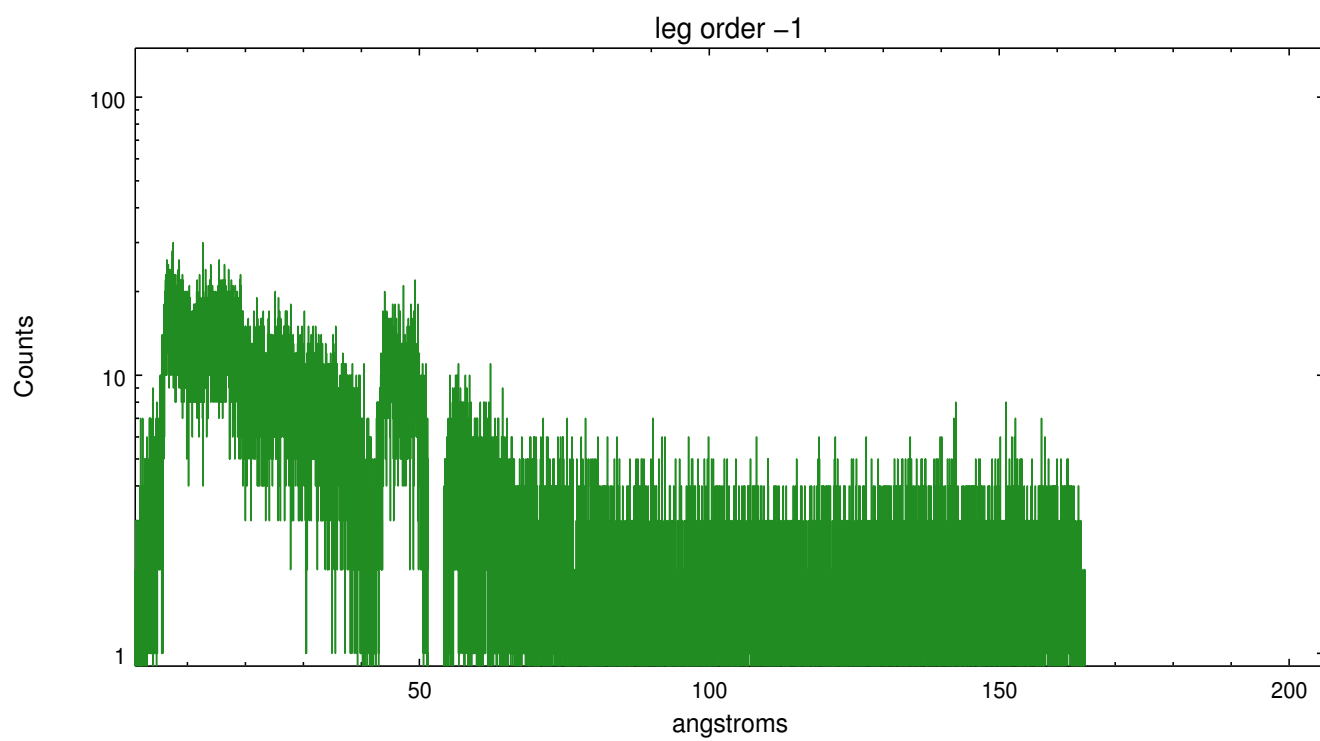


3 Gratings

3.1 LETG Arm



LETG Zero Order



A Summary

A.1 Status

V&V Scientist	Joy Nichols
V&V Date (YYYY-MM-DD)	2012.08.10
V&V Edition	1
V&V Disposition and Status	OK
V&V Charge Time	10.145706779361

A.2 Comments