

V&V Reference Report

L2 ASCDS Version : 8.2.1

Observation 1300 - L2 Version 4

Chandra X-Ray Center

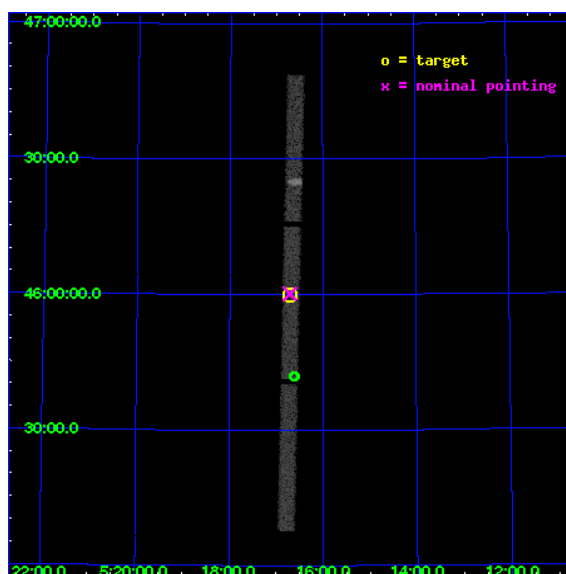
L2 Processing Date : Jan 13 2010

Contents

1	Front	2
2	OBI	3
2.1	OBI	3
2.1.1	Images	3
2.1.2	Parameters	4
2.1.3	Events	4
2.2	Compared Parameters	5
2.3	Aspect	6
2.4	Star Slots	9
2.4.1	Slot 3	9
2.4.2	Slot 4	10
2.4.3	Slot 5	11
2.4.4	Slot 6	12
2.4.5	Slot 7	13
2.5	FID Slots	14
2.5.1	Slot 0	14
2.5.2	Slot 1	15
2.5.3	Slot 2	16
3	Point Sources	17
A	Summary	18
A.1	Status	18
A.2	Comments	18

1 Front

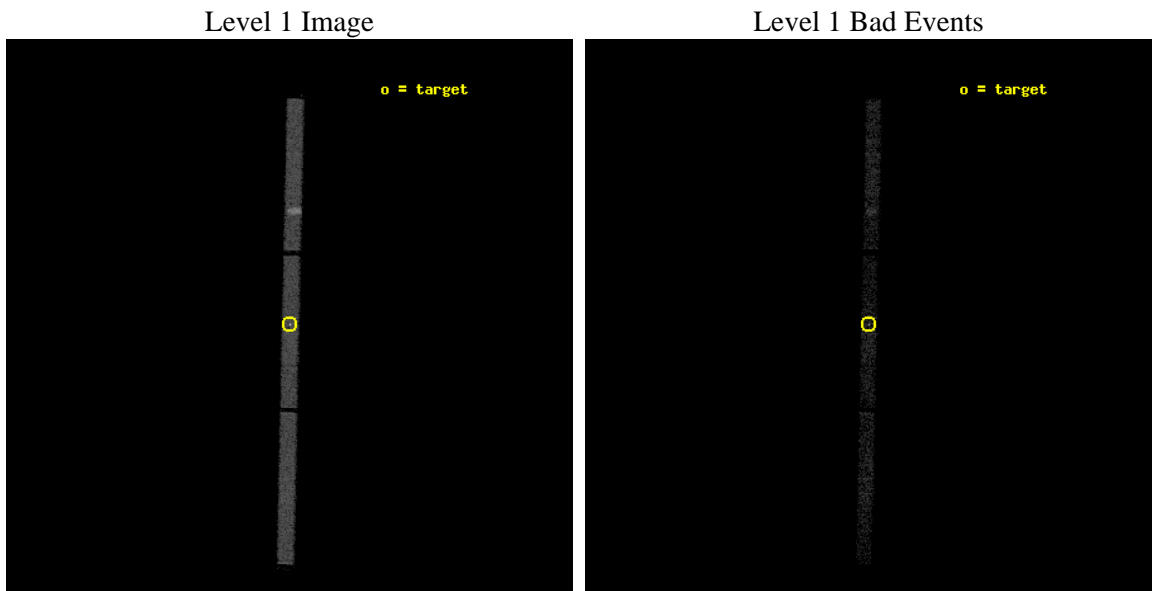
seq_num	280250	Sequence number
obs_id	1300	Observation id
title	 	Proposal title
observer	Dr. CXC Calibration	Principal investigator
object	CAPELLA	Source name
ra_targ	79.17625	Observer's specified target RA
dec_targ	45.997889	Observer's specified target Dec
ra_nom	79.17699558724	Nominal RA
dec_nom	46.003335277539	Nominal Dec
roll_nom	91.185637855354	Nominal Roll
revision	4	Processing version of data
ontime	305.70626097172	[s]
livetime	302.83499505522	Ontime multiplied by DTCOR
l2events	22345	Number of level 2 events



2 OBI

2.1 OBI

2.1.1 Images



2.1.2 Parameters

obi_num	0	Obi number	sched_exp_time	40000.000000	Scheduled observation exposure time
ascdsver	8.2.1	Processing system revision	ontime	305.70626097172	[s]
caldbver	4.1.5	 	ll events	36724	Number of level 1 events
date	2010-01-13T06:03:30	Date and time of file creation			
revision	3	Processing version of data			

2.1.3 Events

Level 1 Events

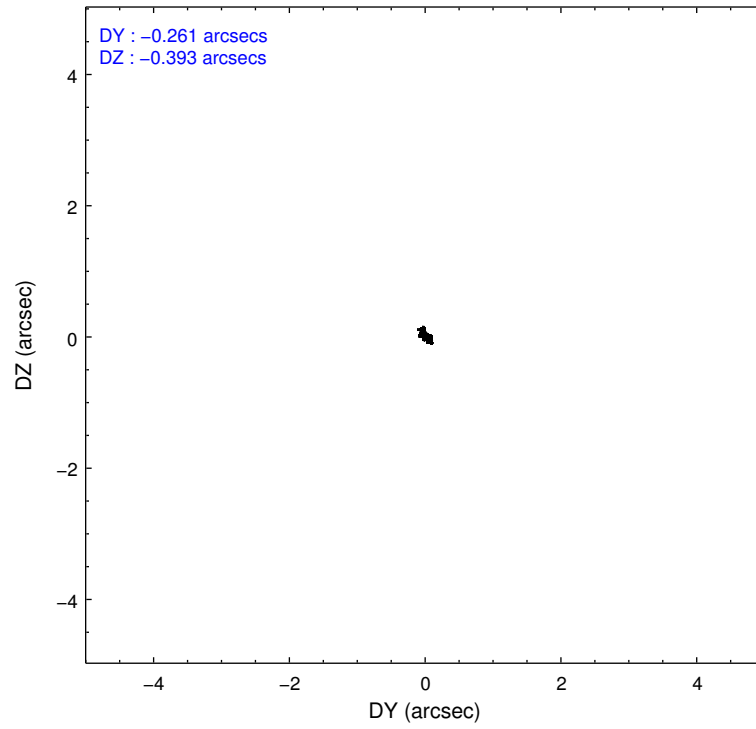
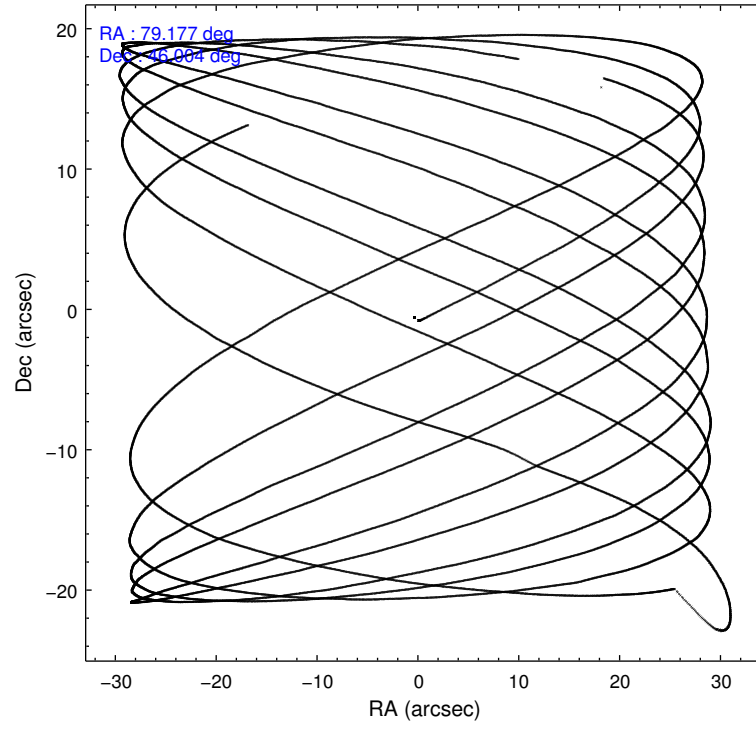
	segment 1	segment 2	segment 3
level 1 events	9991	15047	11686
rejected events	3537	4201	4262
rejected %	35%	27%	36%

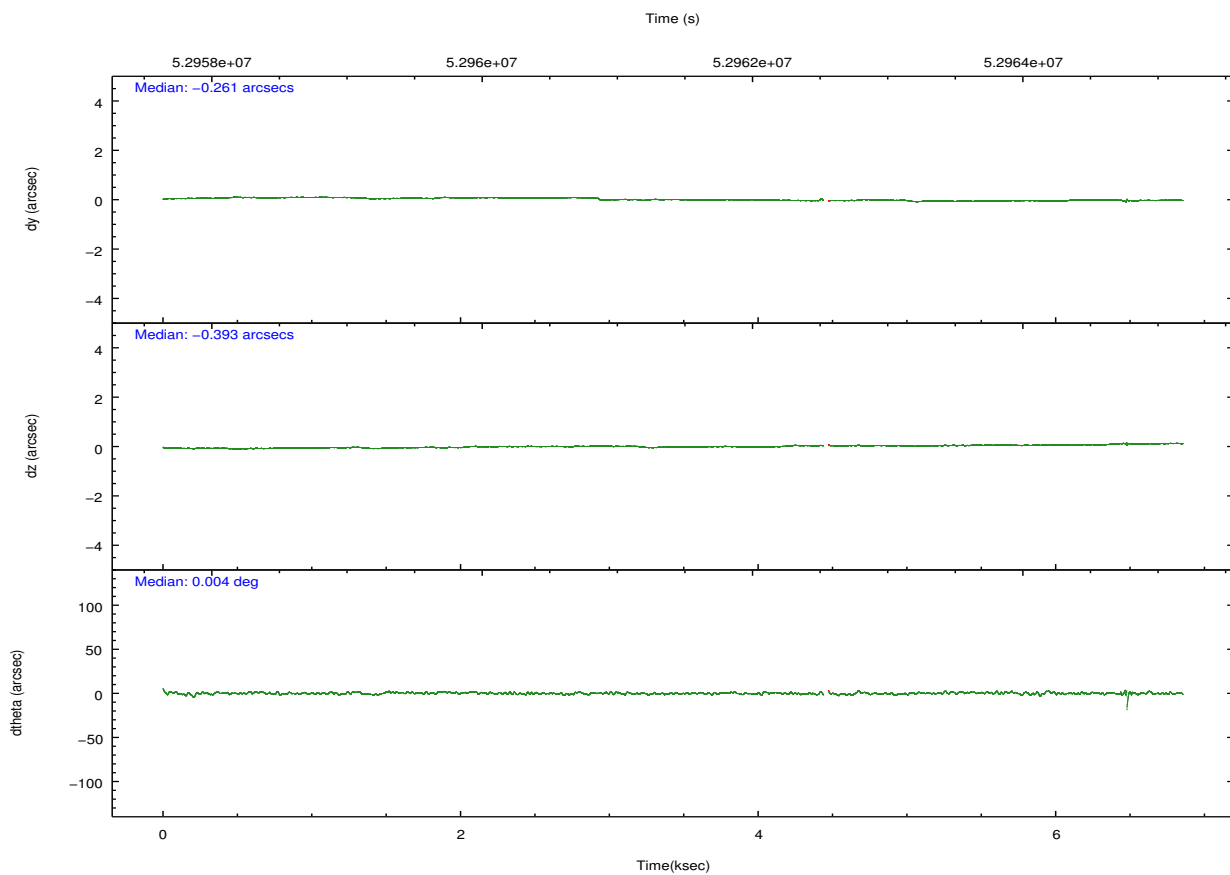
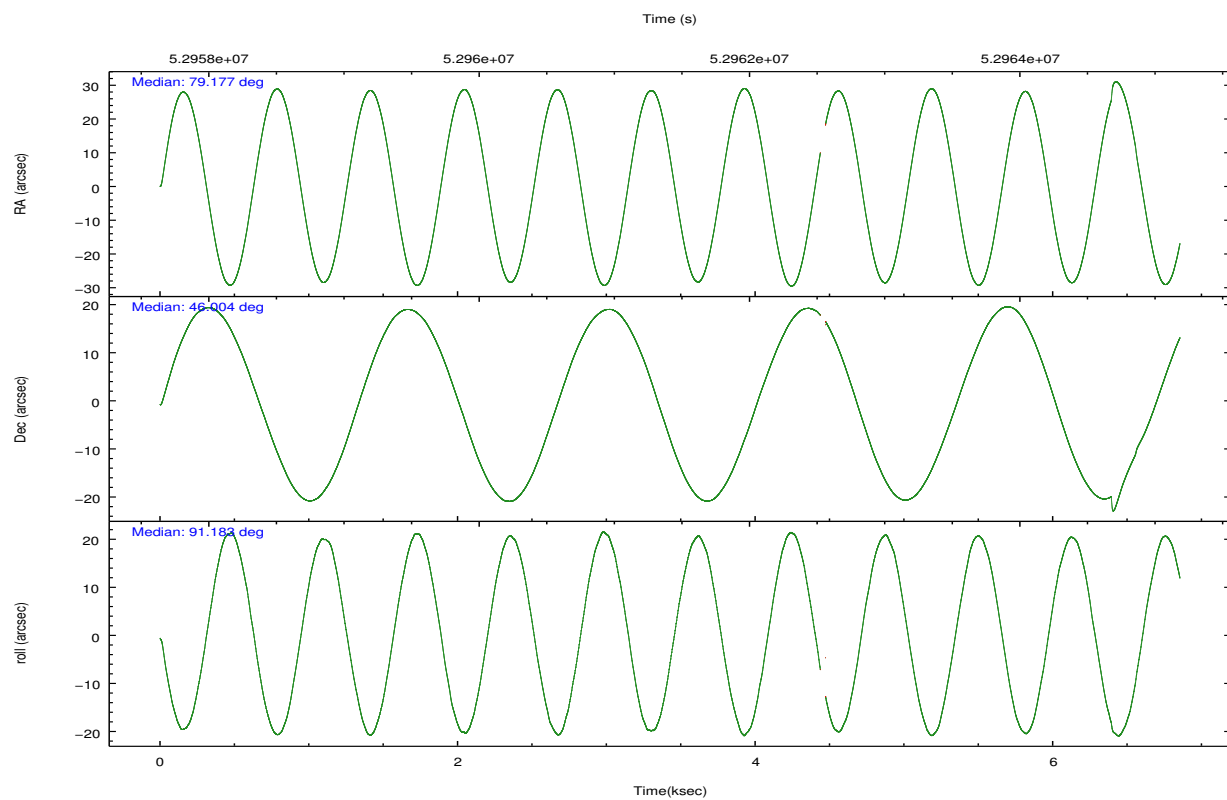
2.2 Compared Parameters

Parameter	Planned	Actual
Instrument	HRC	HRC
Detector	HRC-S	HRC-S
Grating	NONE	NONE
Data mode	OBSERVING	OBSERVING
Observation mode	POINTING	POINTING
Pointing RA	79.199341	79.17699558724037
Pointing Dec	45.978868	46.00333527753874
Pointing Roll	91.102233	91.18563785535403
SIM focus pos (mm)	-1.429586	-1.370509375638239
SIM defocus (mm)	0.1037507710433287	0.1628272637660579
SIM translation stage pos (mm)	250.455976	250.466033080201
SIM translation stage offset (mm)	0	-0.01005468664627074
Observation start time	52958464.184000	52957797.227645
Observation start date	1999-09-05T22:40:00	1999-09-05T22:29:57
Observation end time	52998464.184000	52964841.540398
Observation end date	1999-09-06T09:46:40	1999-09-06T00:27:21

Parameter	Planned	Actual
Obspar format version number	6	6
Obspar file type	PREDICTED	ACTUAL
Obspar update status	NONE	UPDATED

2.3 Aspect



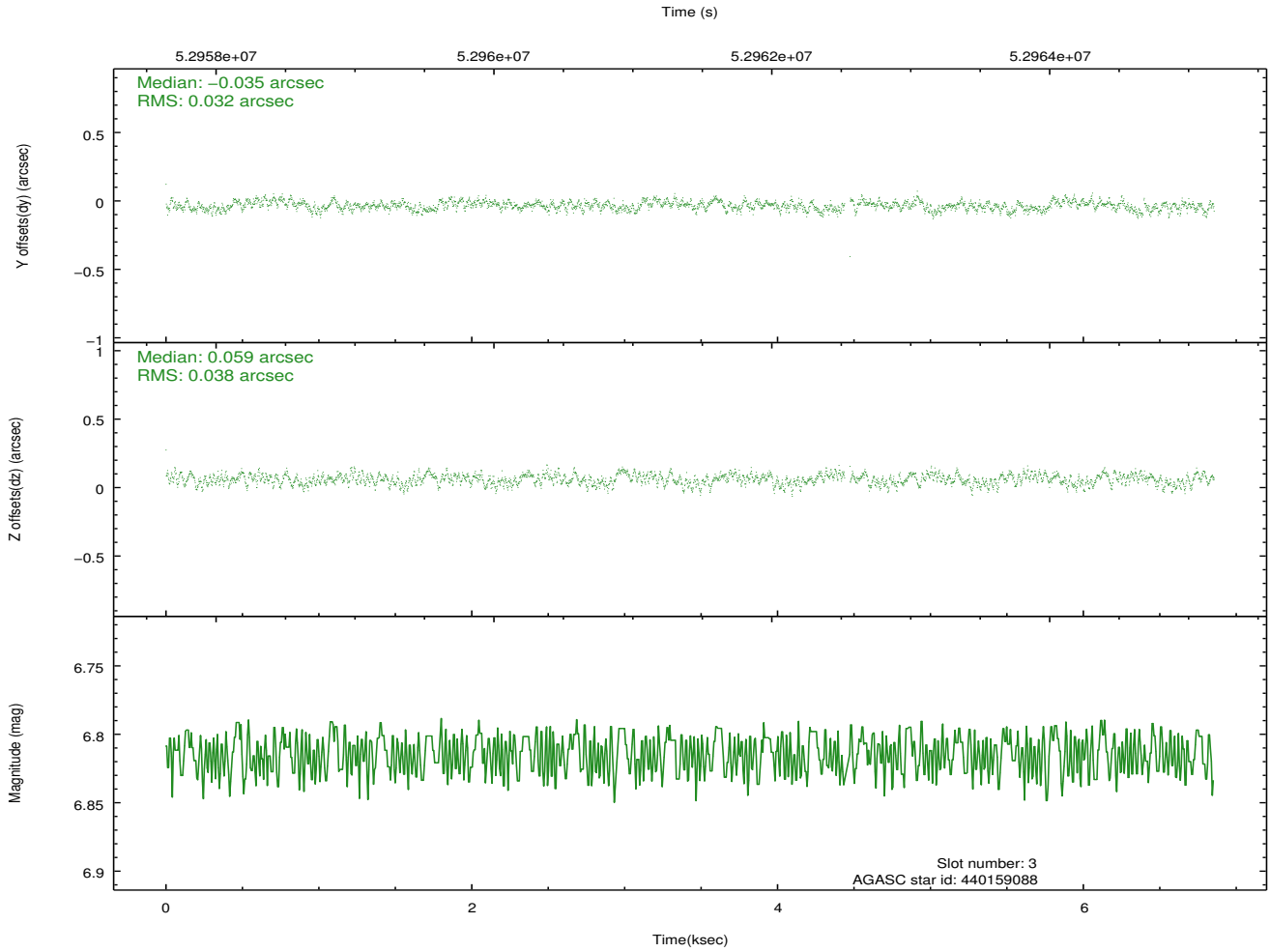
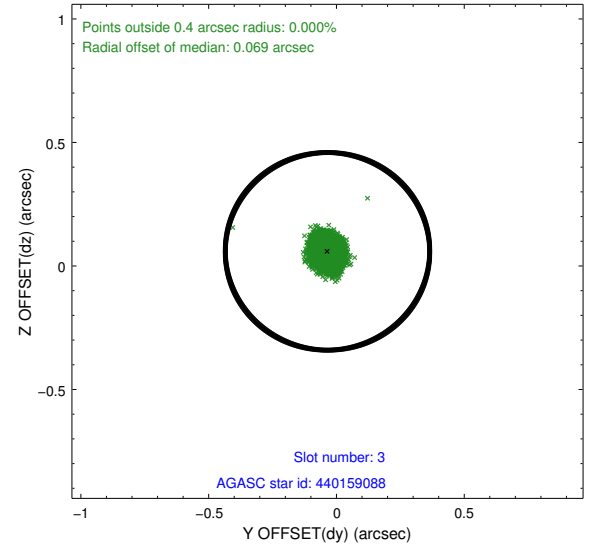
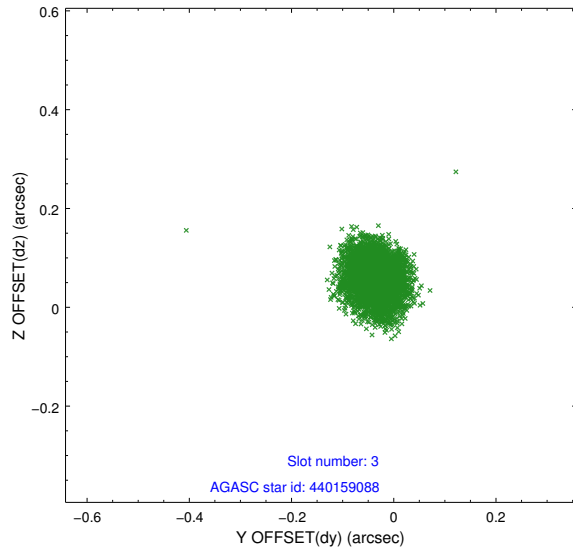


Slot Statistics

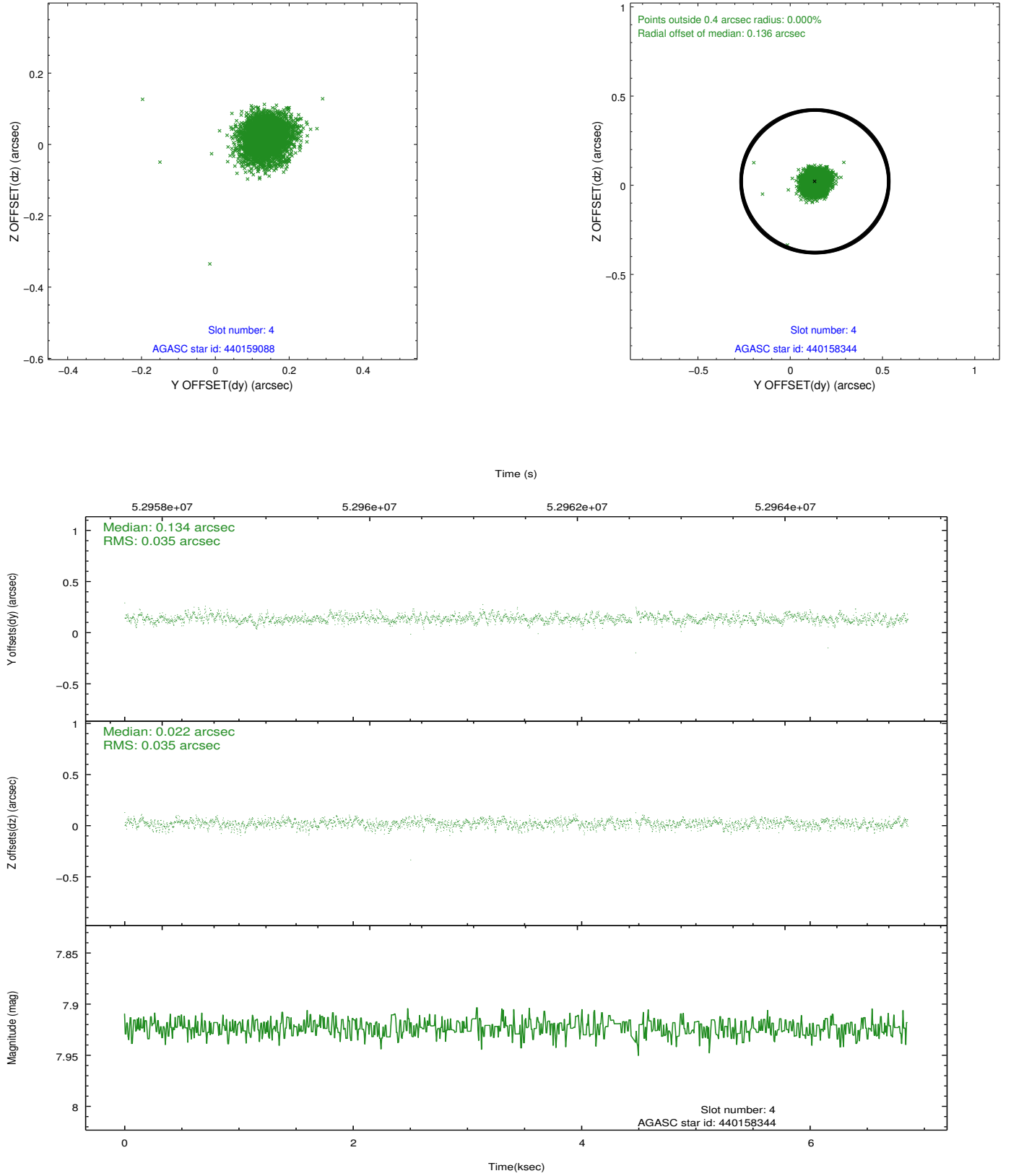
slot	status	id	mag	n_pts	med_dy	med_dz	dr1	dr2	ra	dec	mean_y	mean_z
0	FID	HRC-S-1	7.00	3313	0.146	-0.071	0.010	0.017	0.000000	0.000000	-1153.79	-447.73
1	FID	HRC-S-3	7.01	3313	0.086	-0.118	0.011	0.017	0.000000	0.000000	-1156.79	581.62
2	FID	HRC-S-4	6.99	3313	0.153	-0.107	0.008	0.015	0.000000	0.000000	1244.27	584.20
3	GUIDE	440159088	6.81	3327	-0.035	0.059	0.053	0.082	79.453034	46.128063	525.10	-643.18
4	GUIDE	440158344	7.92	3327	0.134	0.022	0.052	0.086	79.344888	45.394991	-2108.72	-327.78
5	GUIDE	440149808	8.52	3320	-0.057	-0.086	0.055	0.090	78.873930	46.405955	1552.94	777.84
6	GUIDE	440145944	9.10	3327	0.089	0.098	0.076	0.120	80.083717	45.428844	-2010.51	-2195.95
7	GUIDE	438440232	9.47	3321	-0.128	-0.093	0.097	0.156	78.262303	46.626220	2386.81	2270.53

2.4 Star Slots

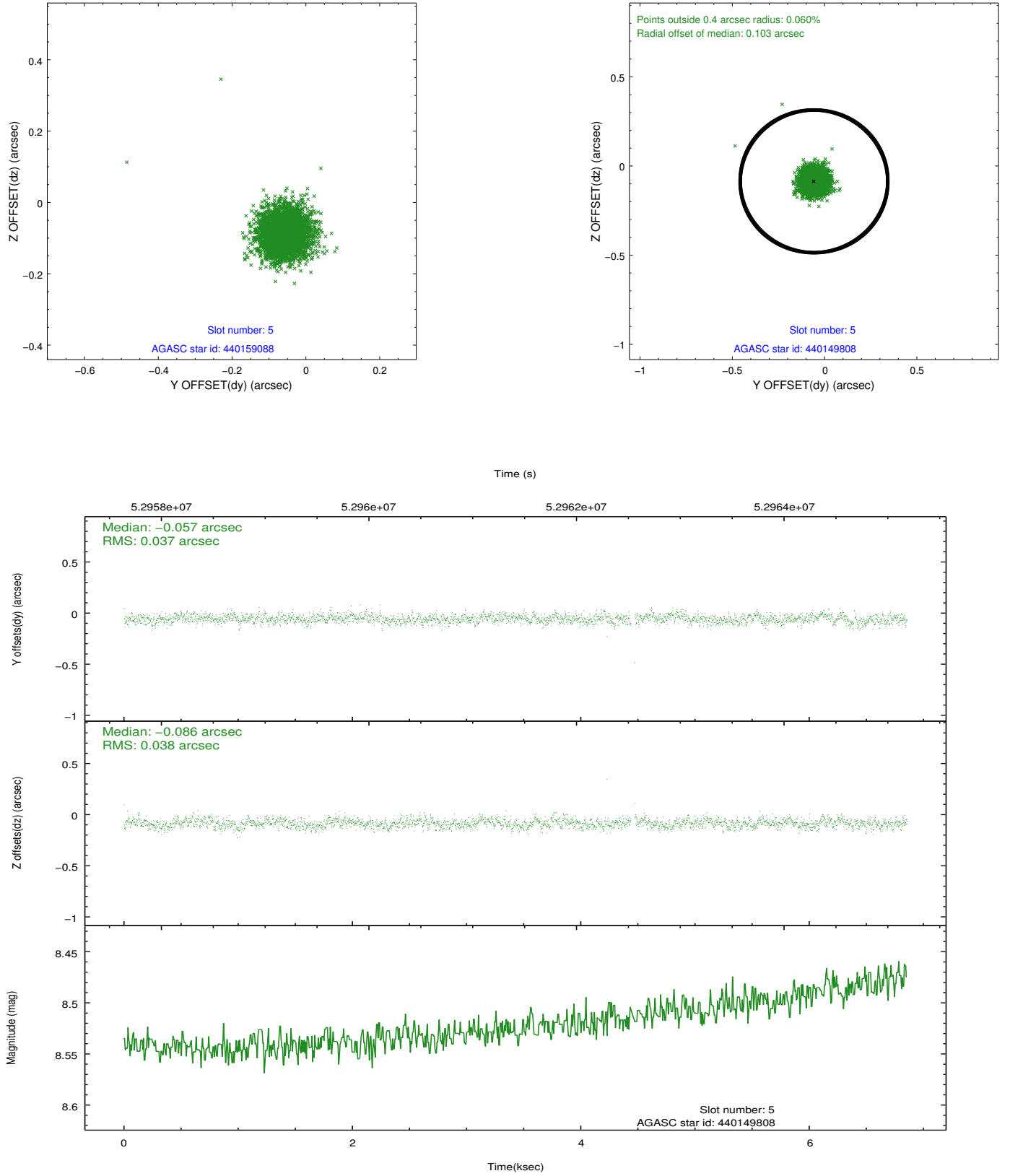
2.4.1 Slot 3



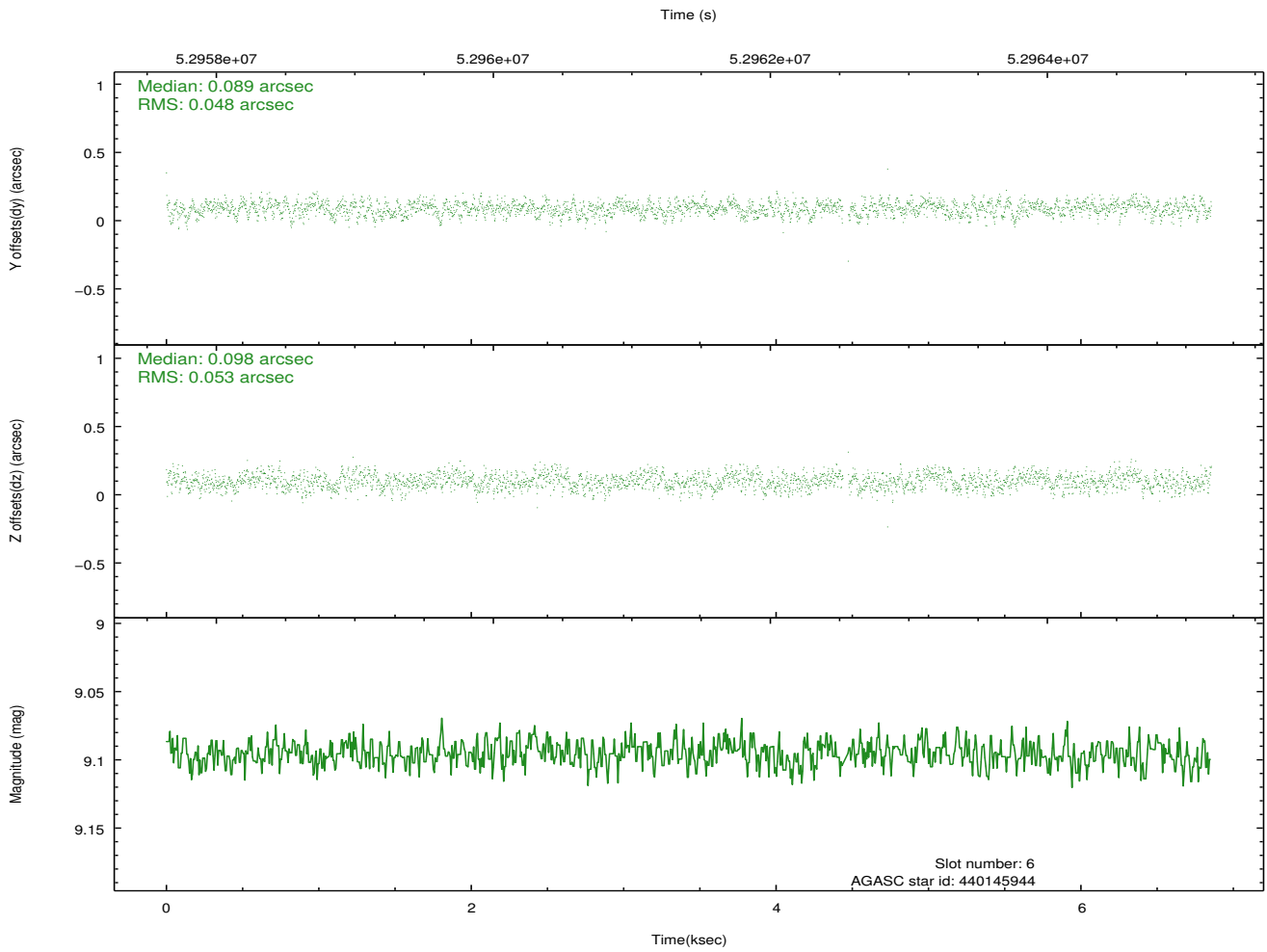
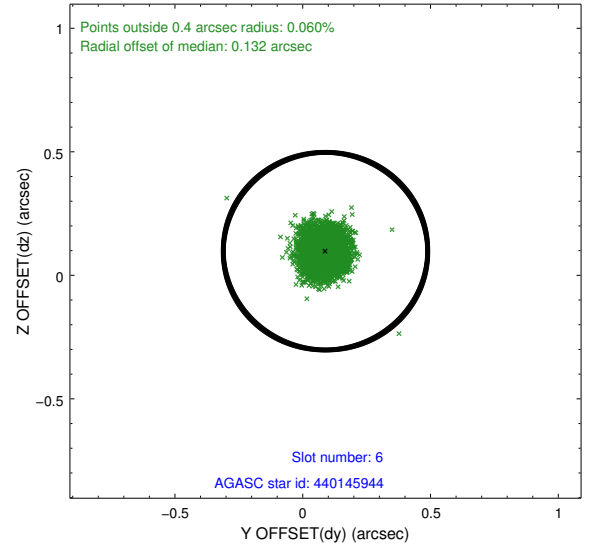
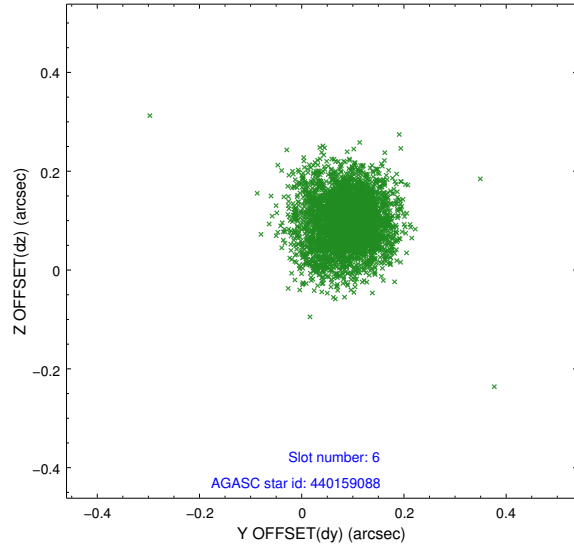
2.4.2 Slot 4



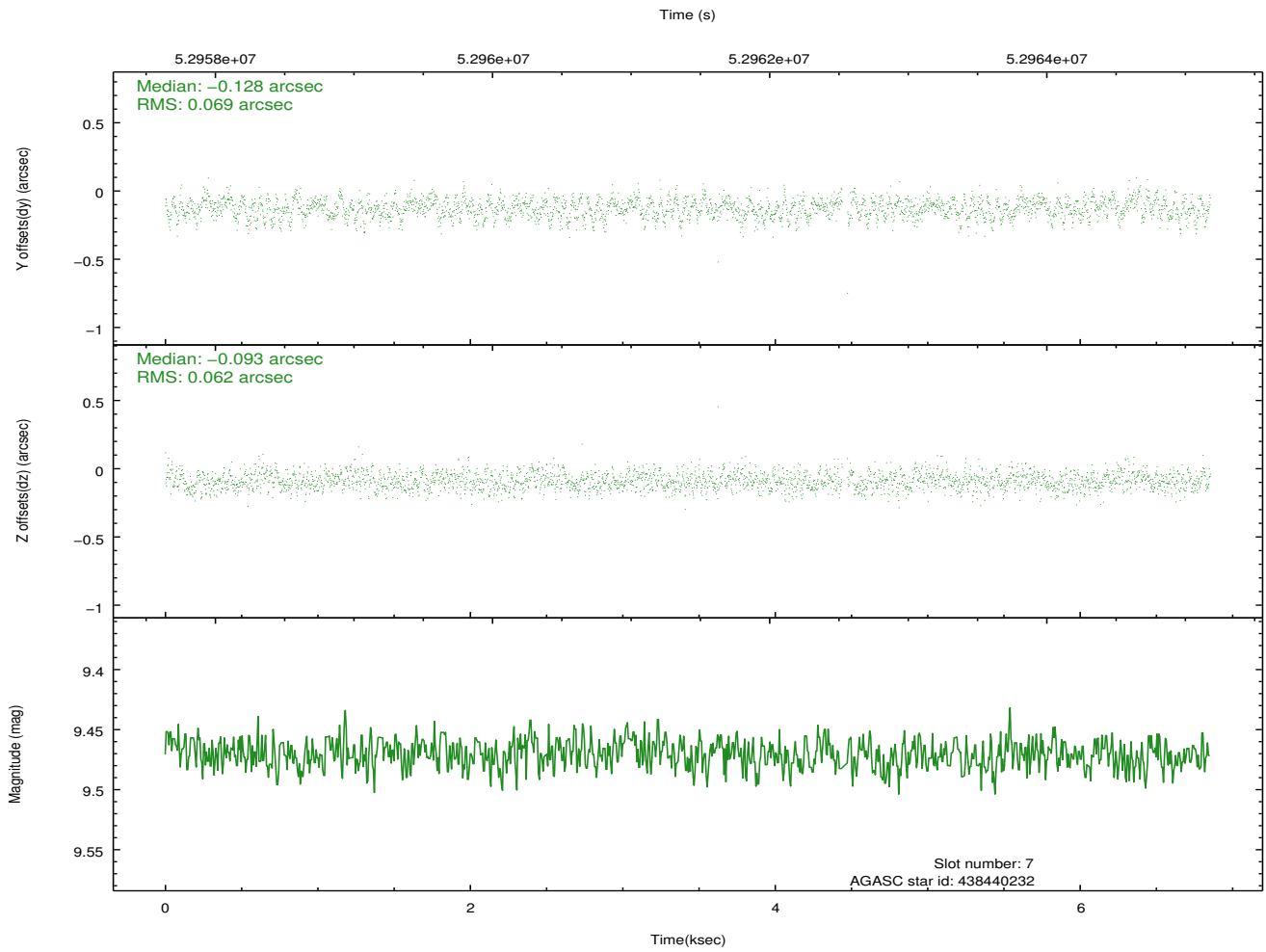
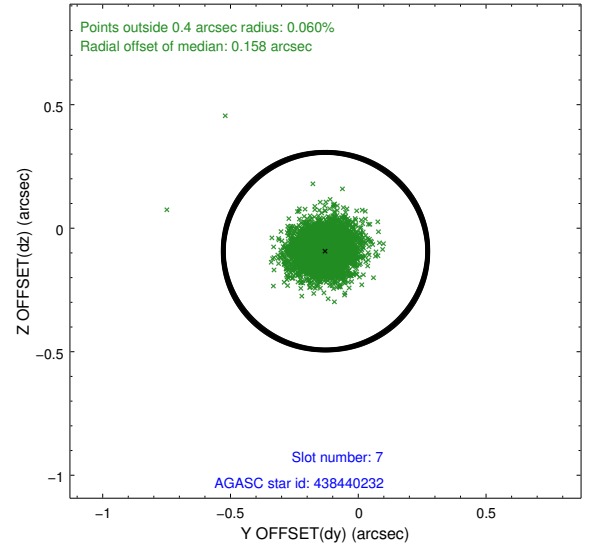
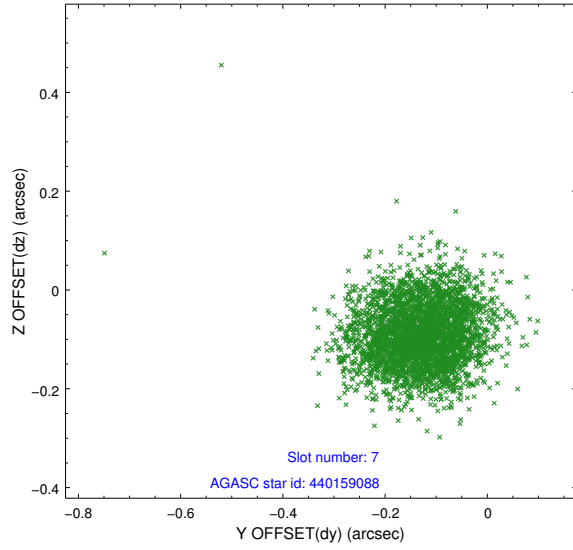
2.4.3 Slot 5



2.4.4 Slot 6

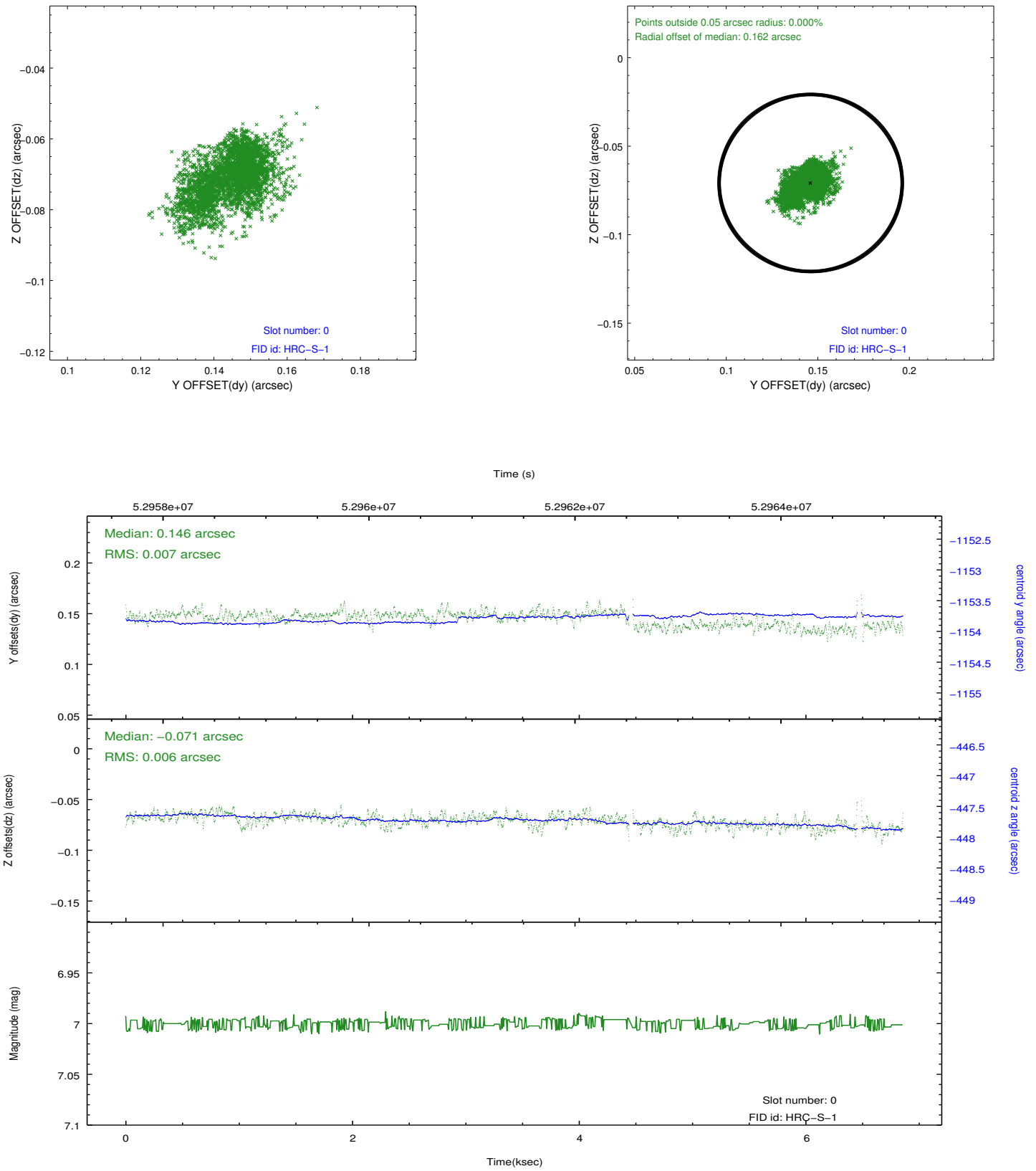


2.4.5 Slot 7

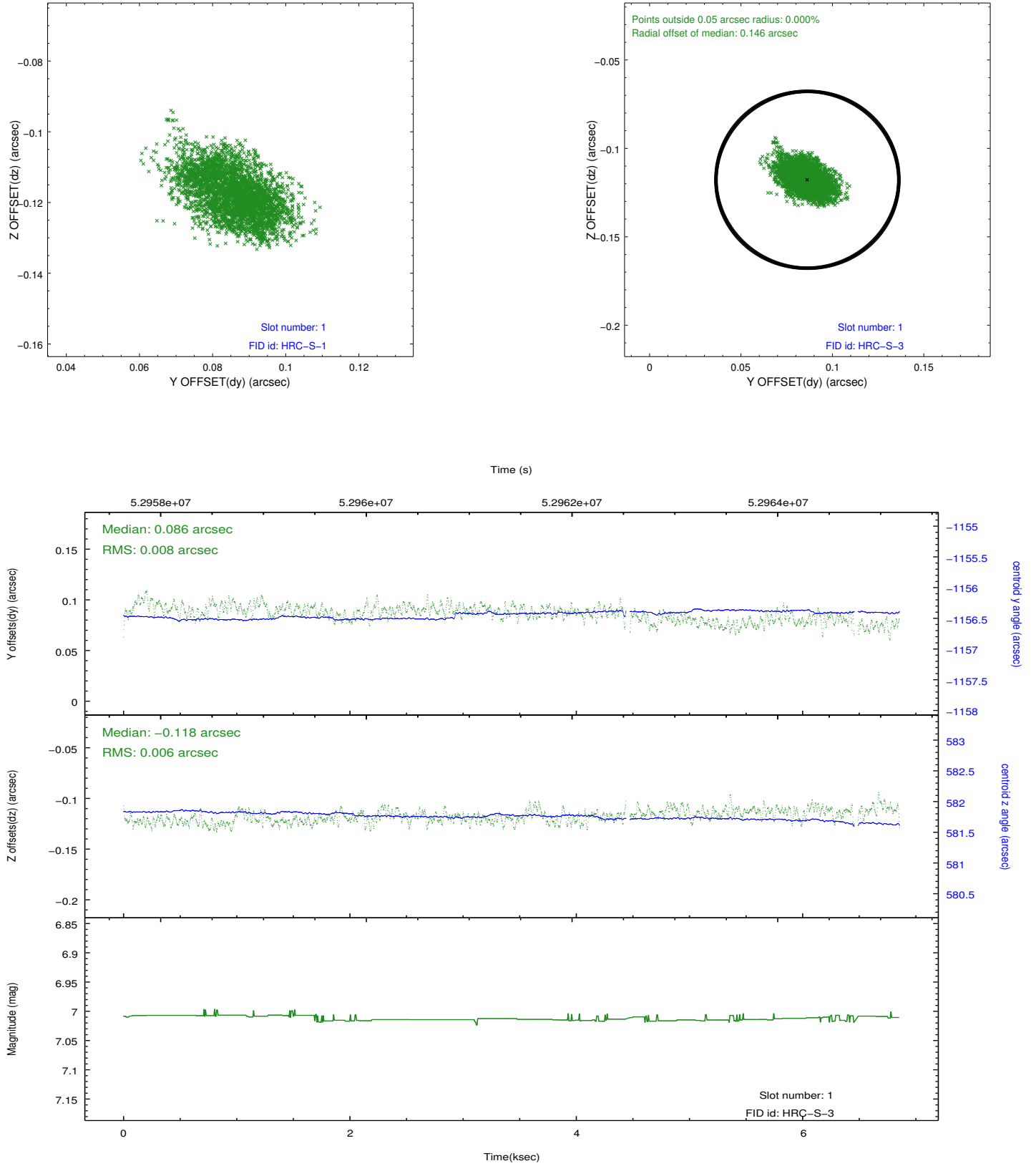


2.5 FID Slots

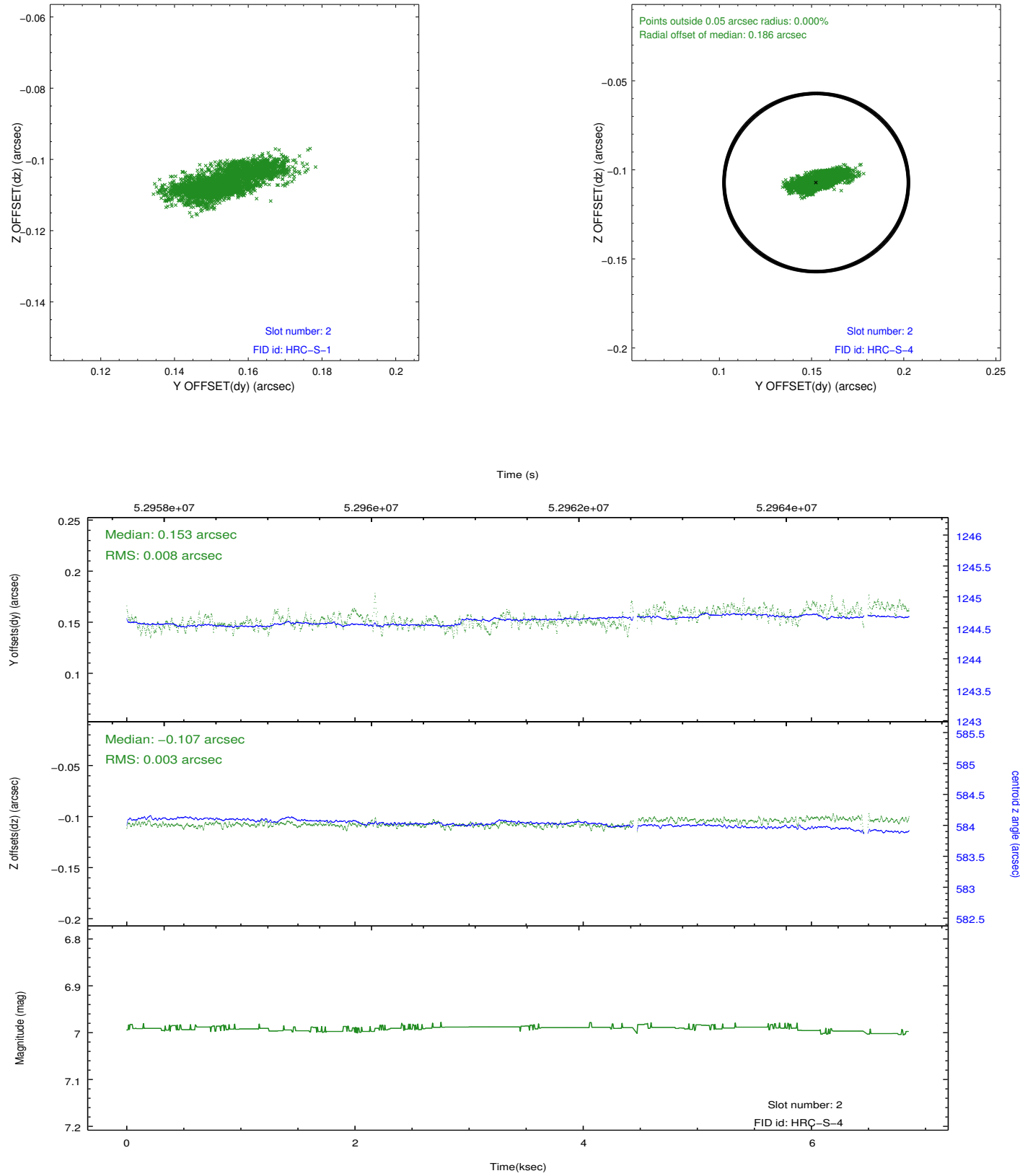
2.5.1 Slot 0



2.5.2 Slot 1



2.5.3 Slot 2



3 Point Sources

18.49 arcmin



A Summary

A.1 Status

V&V Scientist	Beth Sundheim
V&V Date (YYYY-MM-DD)	2010.02.01
V&V Edition	1
V&V Disposition and Status	OK
V&V Charge Time	0.305

A.2 Comments