

V&V Reference Report

L2 ASCDS Version : 8.2.1

Observation 1290 - L2 Version 2

Chandra X-Ray Center

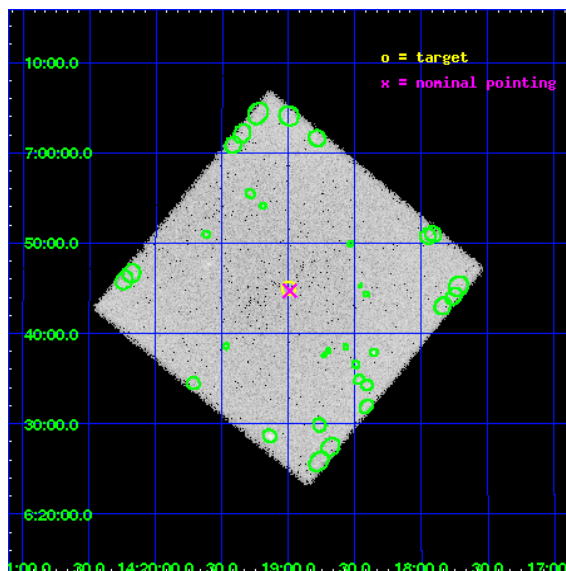
L2 Processing Date : Jan 12 2010

Contents

1	Front	2
2	OBI	3
2.1	OBI	3
2.1.1	Images	3
2.1.2	Parameters	4
2.1.3	Events	4
2.2	Compared Parameters	5
2.3	Aspect	6
2.4	Star Slots	9
2.4.1	Slot 3	9
2.4.2	Slot 4	10
2.4.3	Slot 5	11
2.4.4	Slot 6	12
2.4.5	Slot 7	13
2.5	FID Slots	14
2.5.1	Slot 0	14
2.5.2	Slot 1	15
2.5.3	Slot 2	16
3	Point Sources	17
A	Summary	18
A.1	Status	18
A.2	Comments	18

1 Front

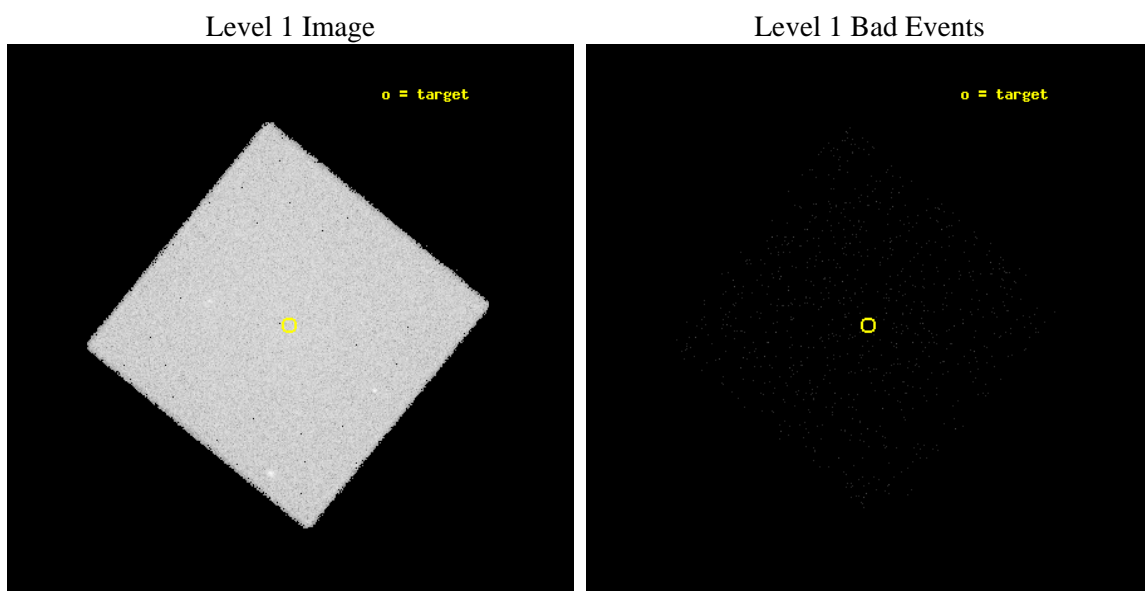
seq_num	980240	Sequence number
obs_id	1290	Observation id
title	 	Proposal title
observer	Dr. CXC Calibration	Principal investigator
object	MOSAIC BKGD 1	Source name
ra_targ	214.75	Observer's specified target RA
dec_targ	6.75	Observer's specified target Dec
ra_nom	214.74750711851	Nominal RA
dec_nom	6.7454825238844	Nominal Dec
roll_nom	264.27706215322	Nominal Roll
revision	2	Processing version of data
ontime	3927.8001411036	[s]
liveltime	3849.5694262734	Ontime multiplied by DTCOR
l2events	248297	Number of level 2 events



2 OBI

2.1 OBI

2.1.1 Images



2.1.2 Parameters

obi_num	0	Obi number	sched_exp_time	8000.000000	Scheduled observation exposure time
ascdsver	8.2.1	Processing system revision	ontime	3927.8001411036	[s]
caldbver	4.1.5	 	l1events	421760	Number of level 1 events
date	2010-01-12T17:09:11	Date and time of file creation			
revision	3	Processing version of data			

2.1.3 Events

Level 1 Events

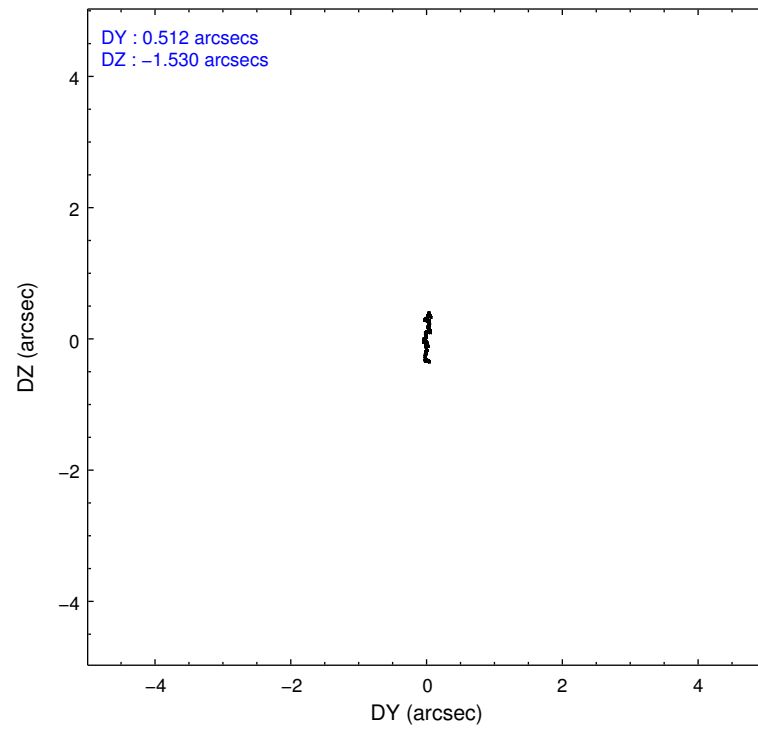
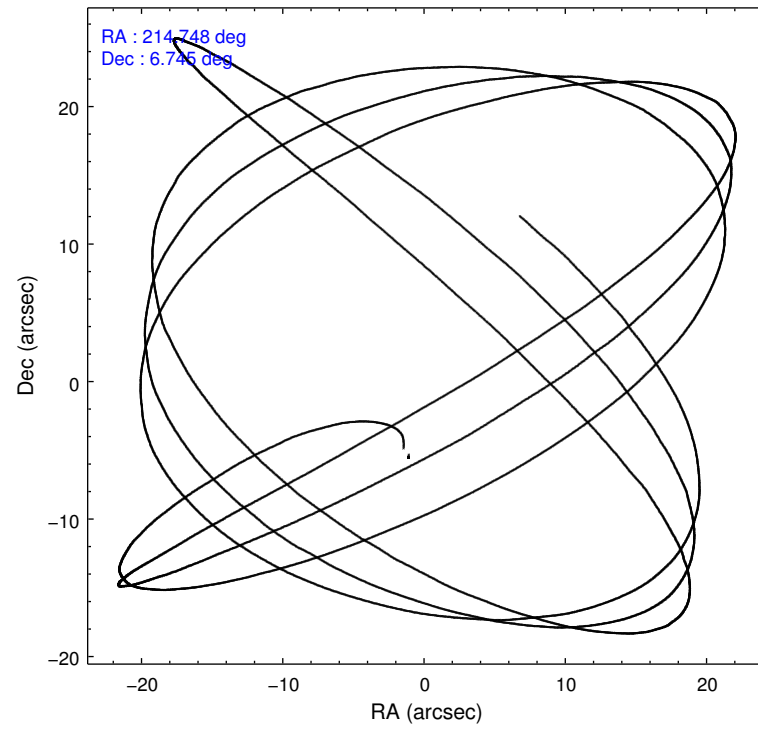
	segment 0
level 1 events	421760
rejected events	9859
rejected %	2%

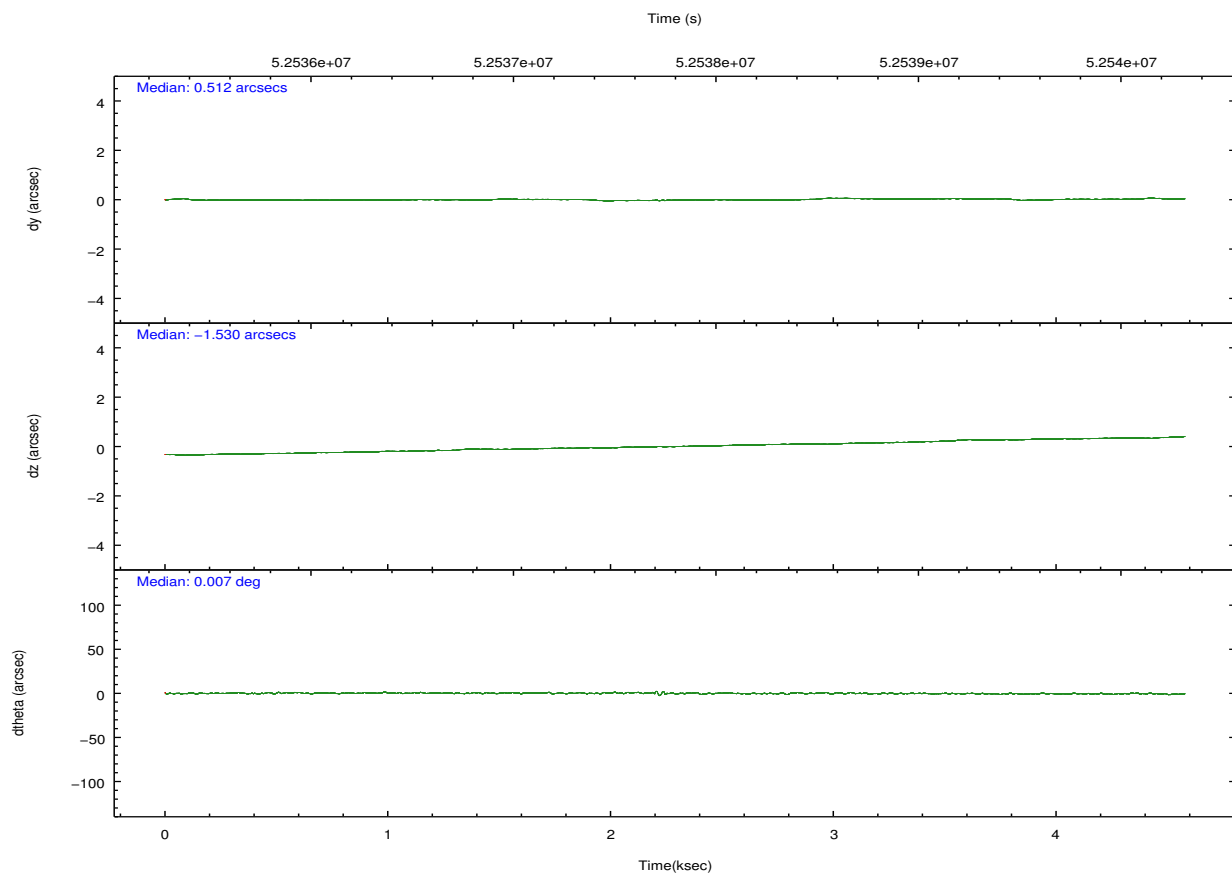
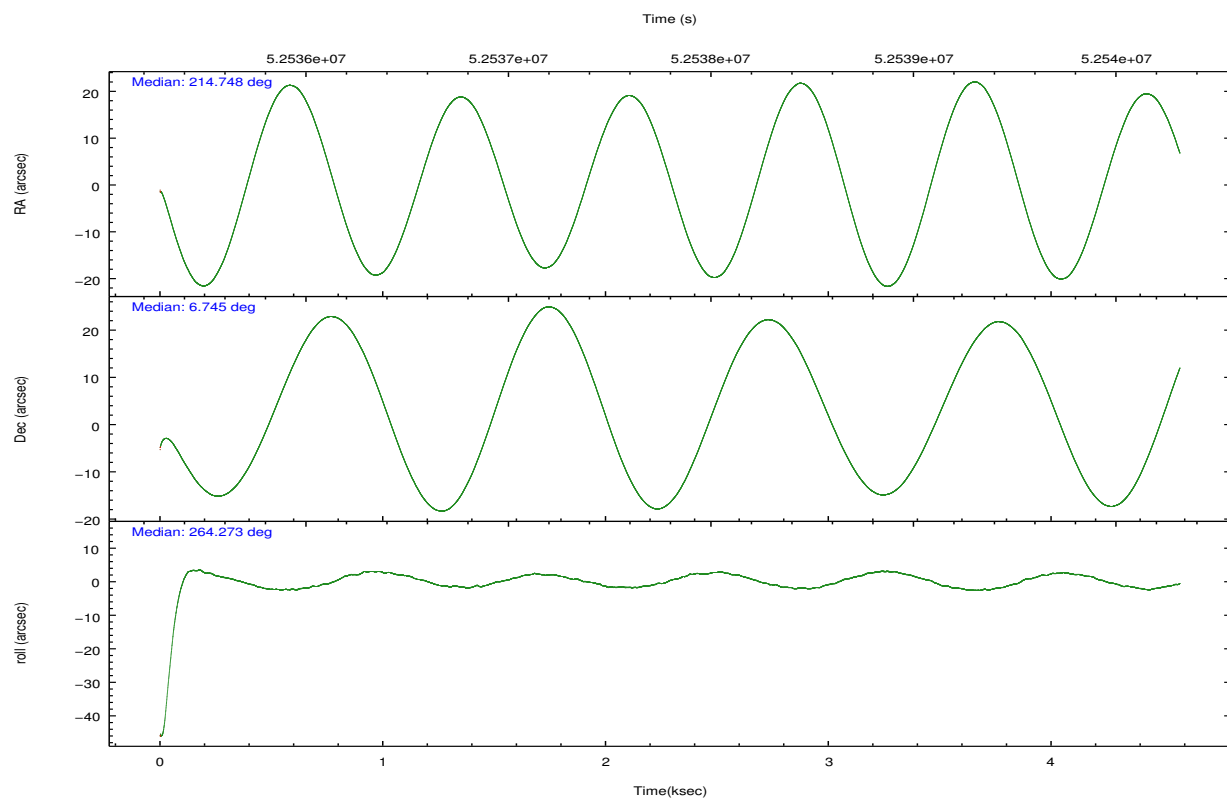
2.2 Compared Parameters

Parameter	Planned	Actual
Instrument	HRC	HRC
Detector	HRC-I	HRC-I
Grating	NONE	NONE
Data mode	OBSERVING	OBSERVING
Observation mode	POINTING	POINTING
Pointing RA	214.736204	214.7475071185146
Pointing Dec	6.770780	6.74548252388435
Pointing Roll	264.374031	264.2770621532165
SIM focus pos (mm)	-1.040293	-0.7362356599963374
SIM defocus (mm)	0	0.3040569606625371
SIM translation stage pos (mm)	126.985494	126.9829799899862
SIM translation stage offset (mm)	0	0.002508901615314585
Observation start time	52535923.184000	52533692.699917
Observation start date	1999-09-01T01:17:39	1999-09-01T00:41:32
Observation end time	52543923.184000	52540090.750147
Observation end date	1999-09-01T03:30:59	1999-09-01T02:28:10

Parameter	Planned	Actual
Obspar format version number	6	6
Obspar file type	PREDICTED	ACTUAL
Obspar update status	NONE	UPDATED

2.3 Aspect



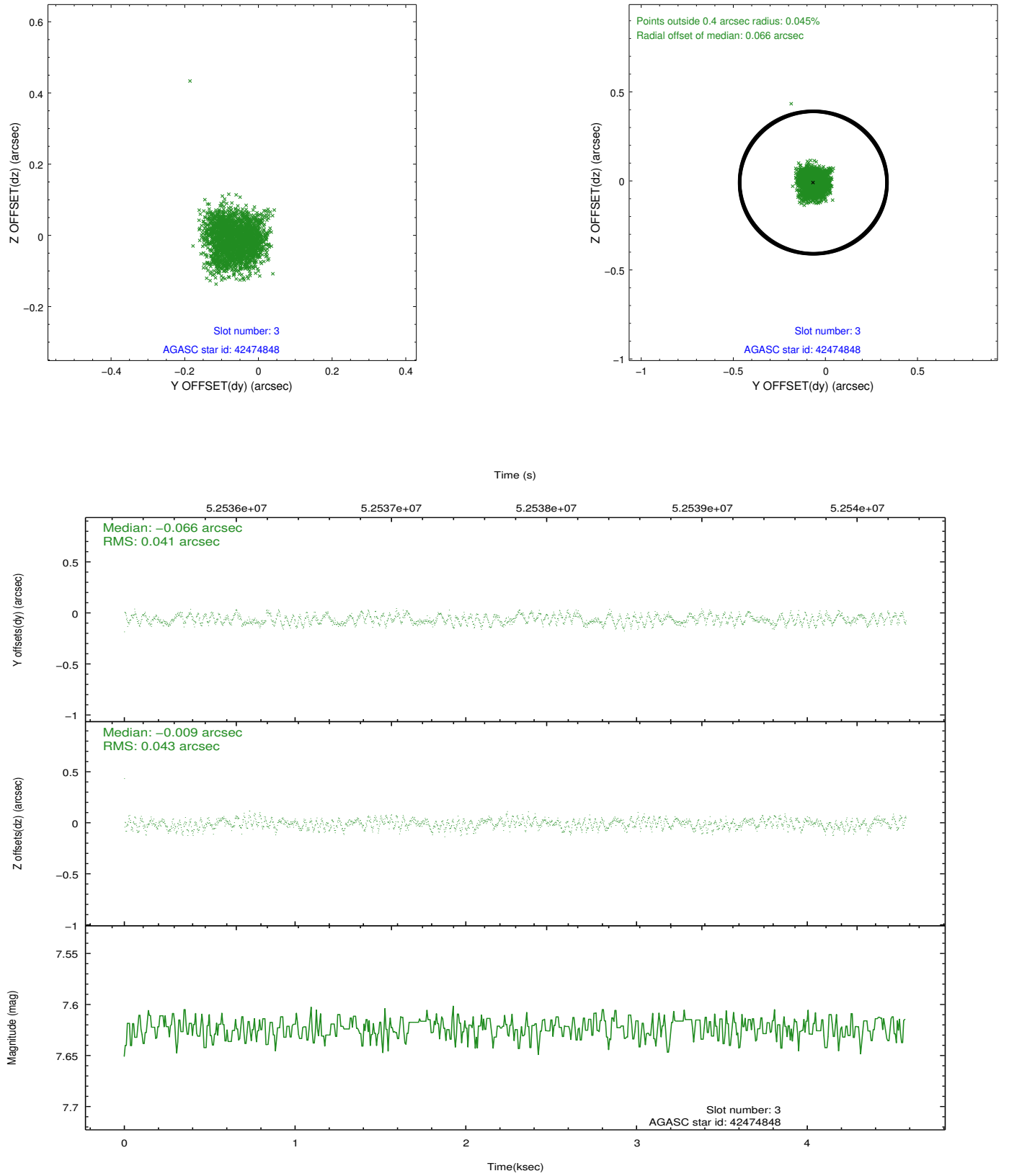


Slot Statistics

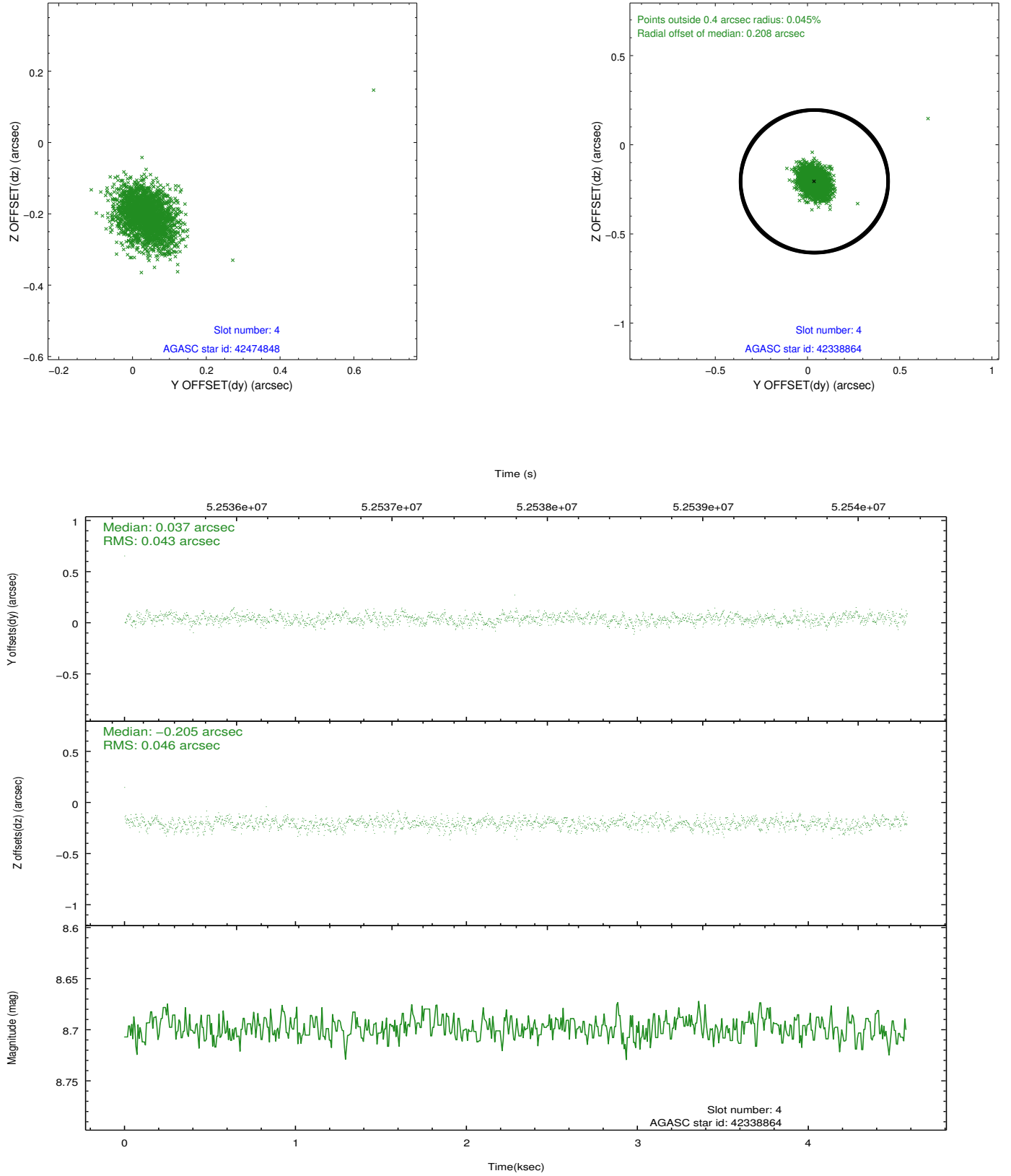
slot	status	id	mag	n_pts	med_dy	med_dz	dr1	dr2	ra	dec	mean_y	mean_z
0	FID	HRC-I-1	6.95	2232	0.031	-0.078	0.012	0.018	0.000000	0.000000	-755.88	-1286.23
1	FID	HRC-I-3	7.04	2232	0.057	0.005	0.012	0.020	0.000000	0.000000	-1184.76	1017.90
2	FID	HRC-I-4	6.98	2232	0.027	-0.016	0.006	0.010	0.000000	0.000000	1286.37	1016.59
3	GUIDE	42474848	7.62	2230	-0.066	-0.009	0.064	0.097	215.355097	6.442439	957.50	2317.97
4	GUIDE	42338864	8.70	2230	0.037	-0.205	0.065	0.106	214.291523	6.752765	220.08	-1576.10
5	GUIDE	42342360	8.83	2230	0.164	0.097	0.058	0.094	214.659937	6.232653	1954.74	-83.33
6	GUIDE	42337776	8.85	2230	-0.177	0.174	0.058	0.098	214.782884	7.378990	-2194.86	-49.98
7	GUIDE	42338216	9.37	2230	0.041	-0.052	0.073	0.119	214.545343	6.840230	-183.16	-704.69

2.4 Star Slots

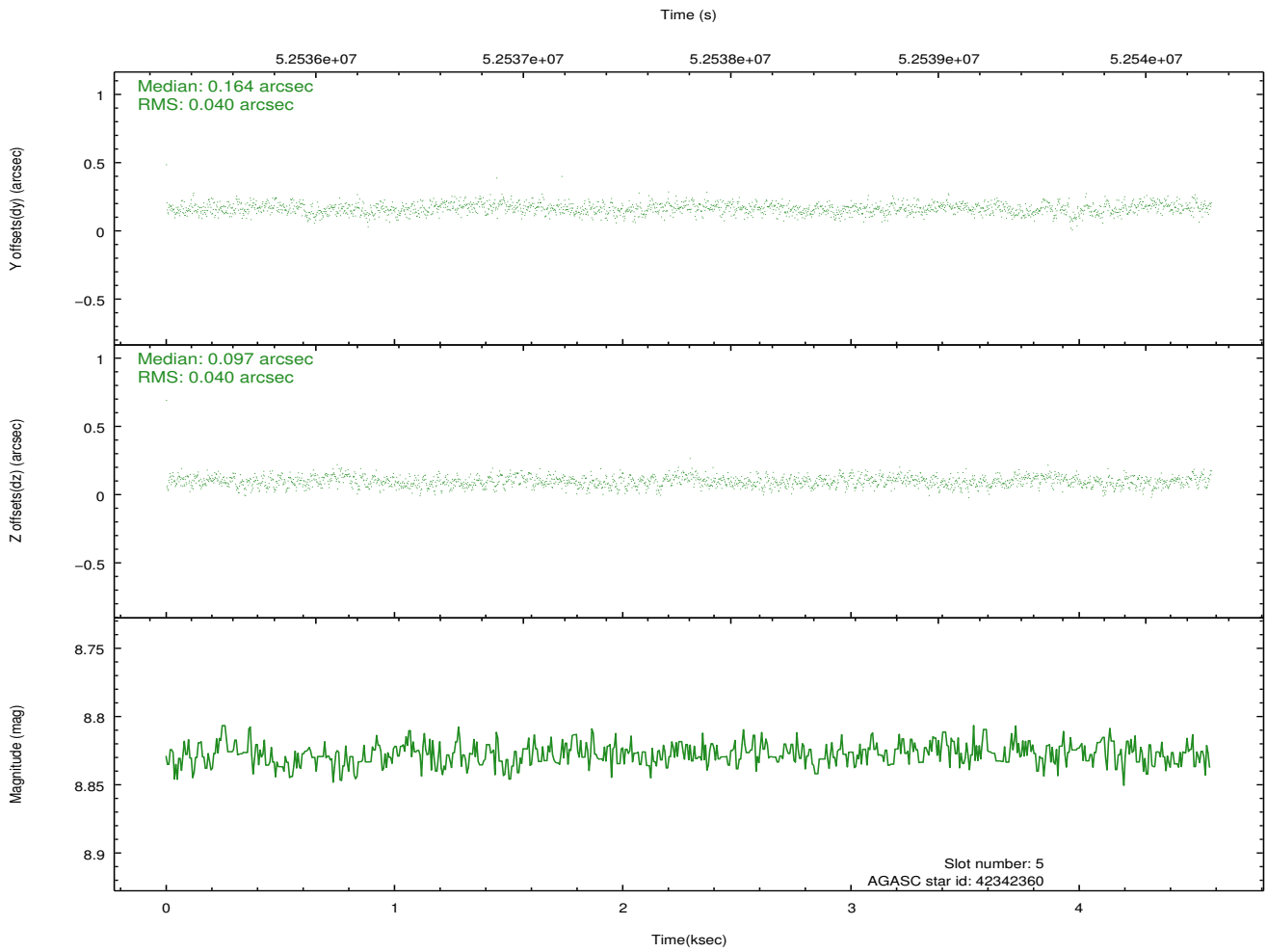
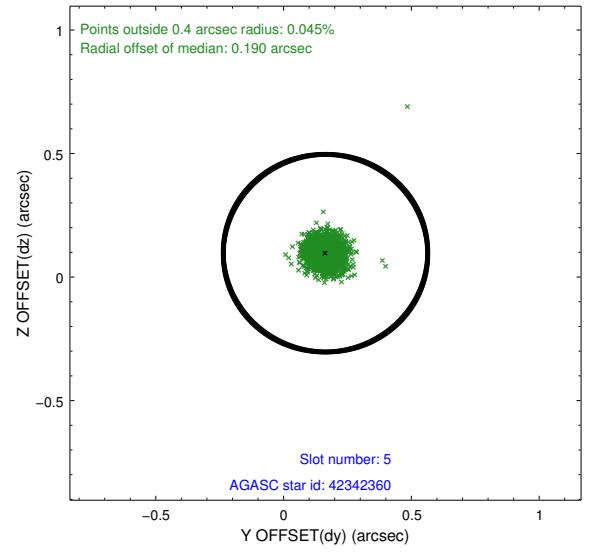
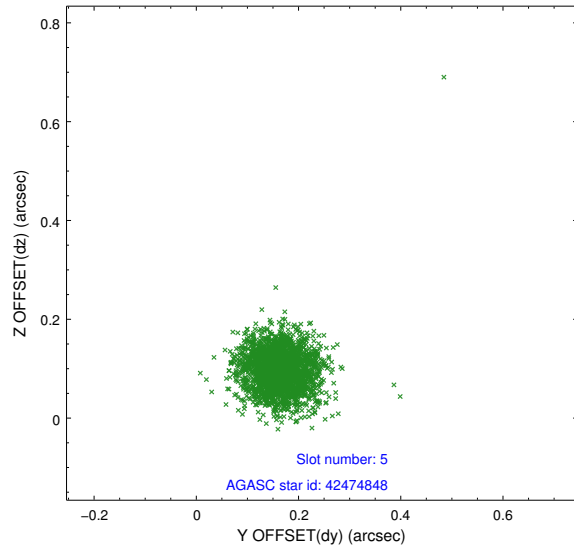
2.4.1 Slot 3



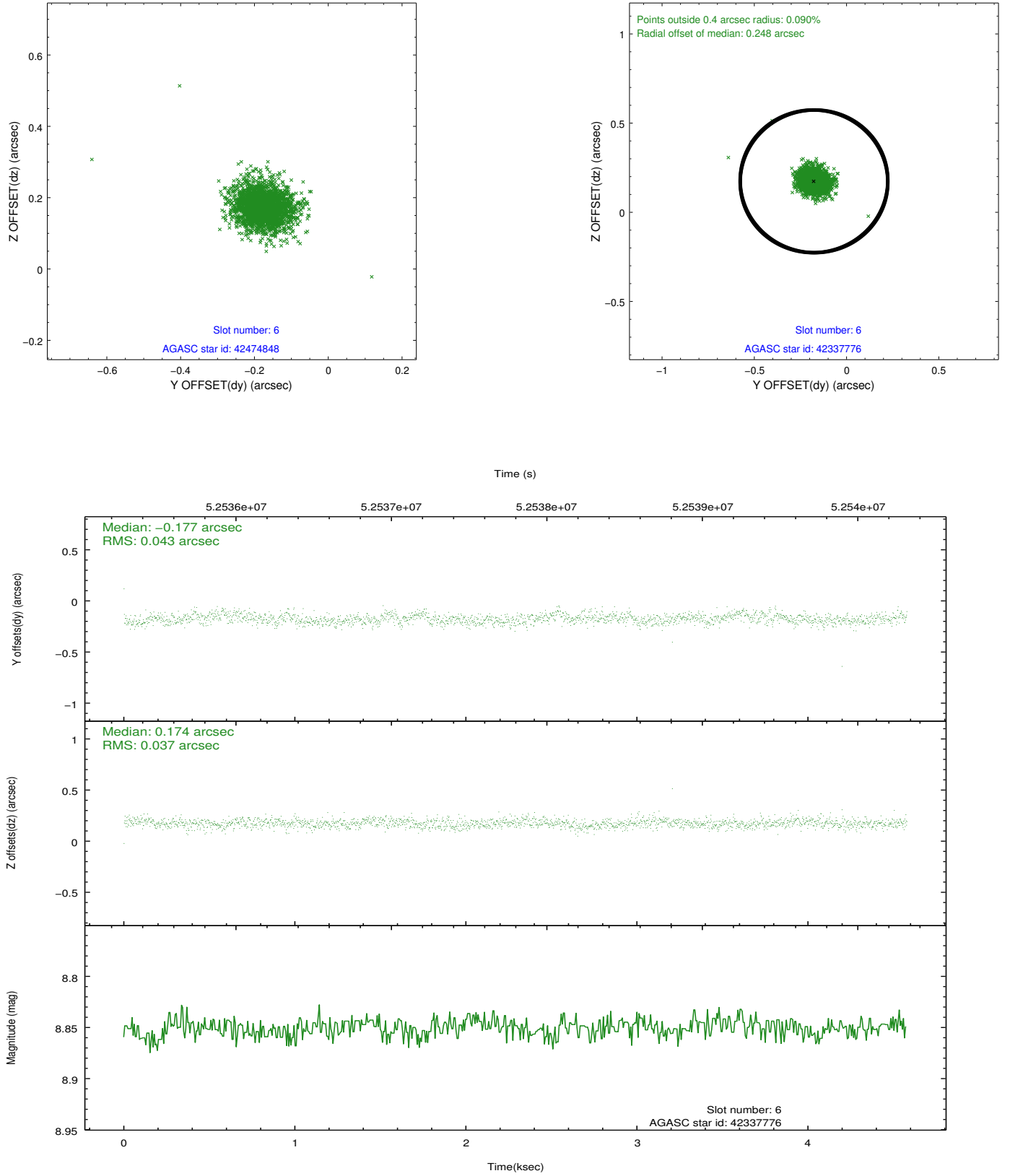
2.4.2 Slot 4



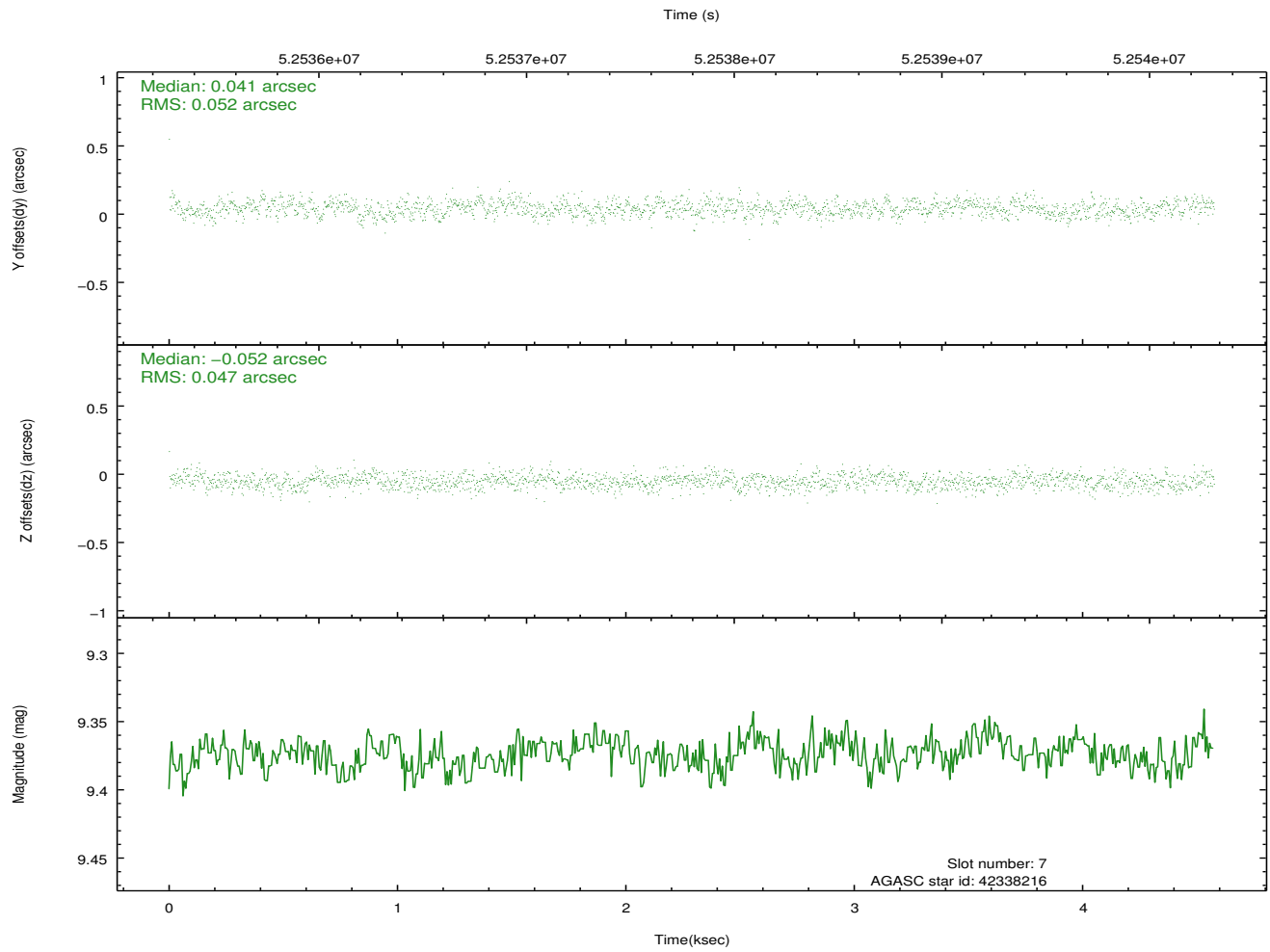
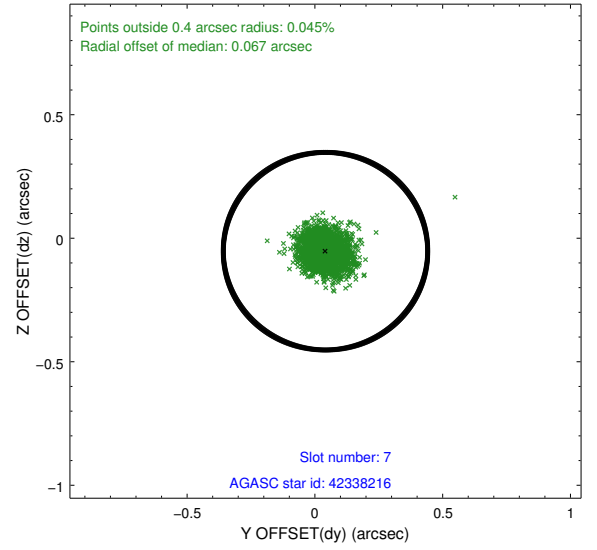
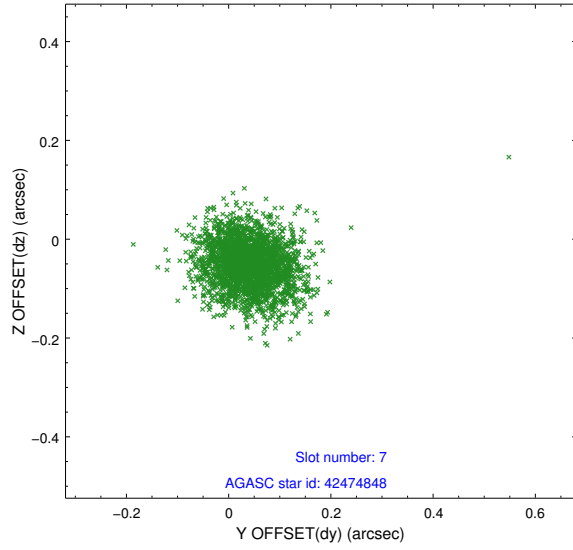
2.4.3 Slot 5



2.4.4 Slot 6

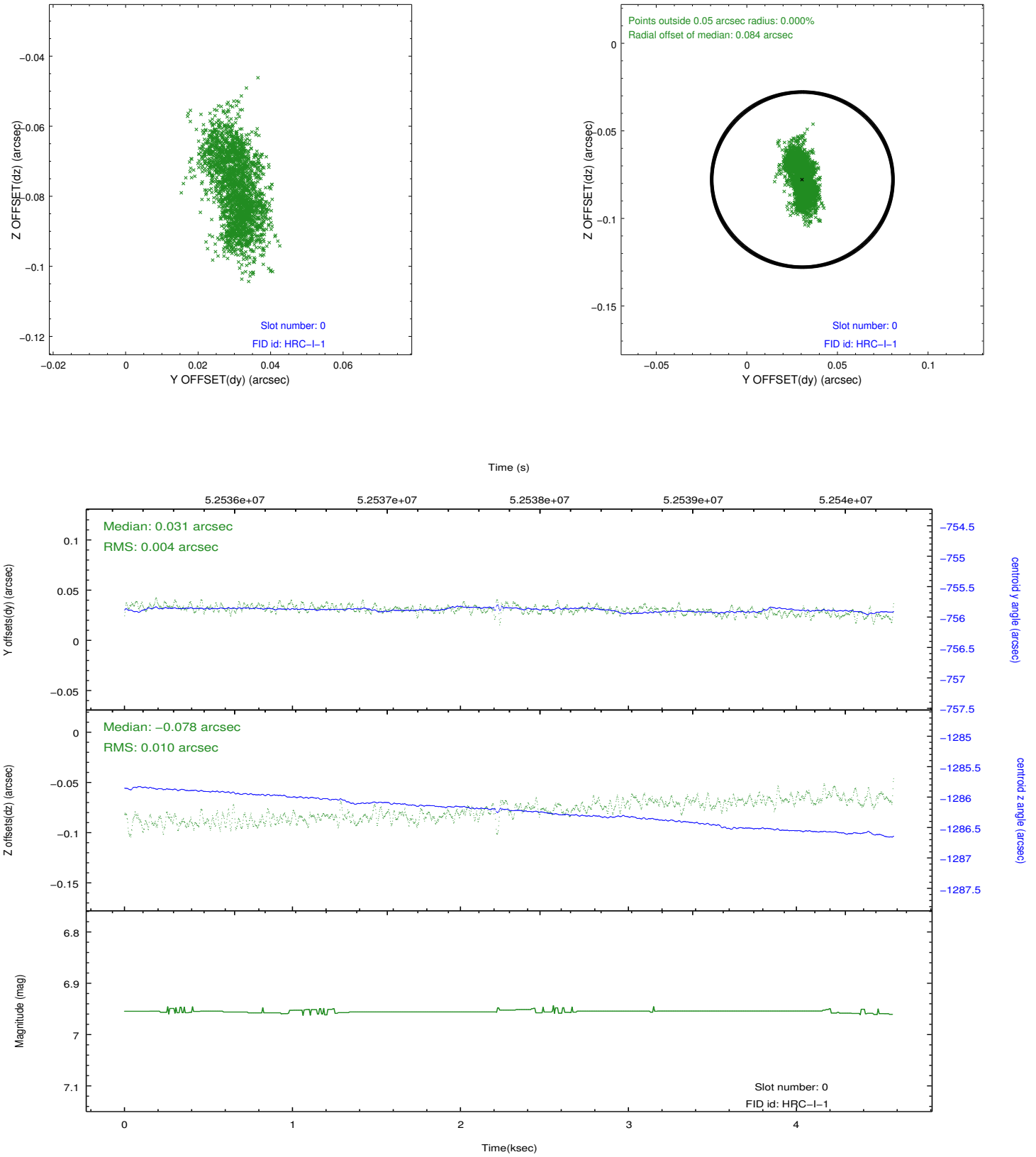


2.4.5 Slot 7

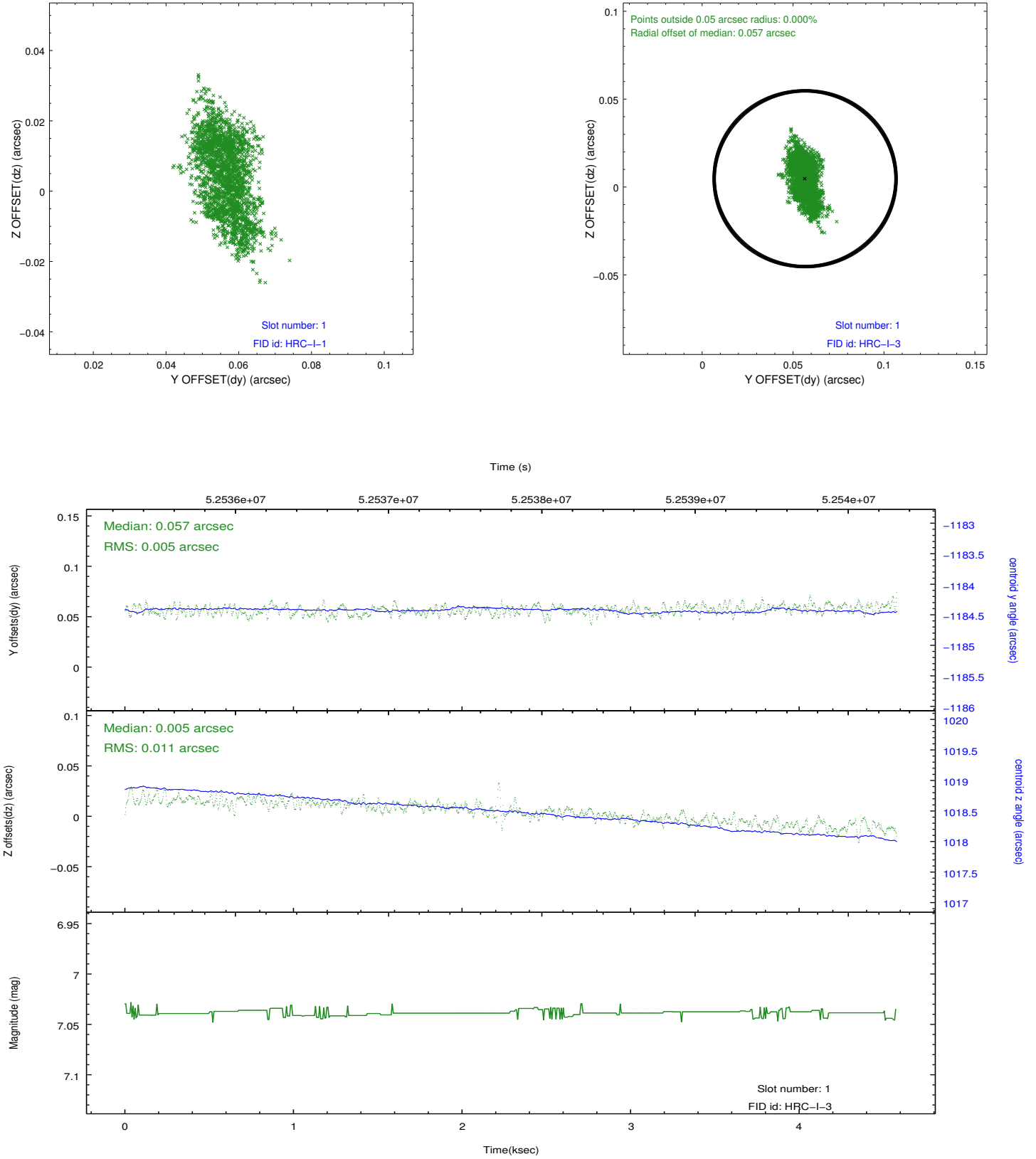


2.5 FID Slots

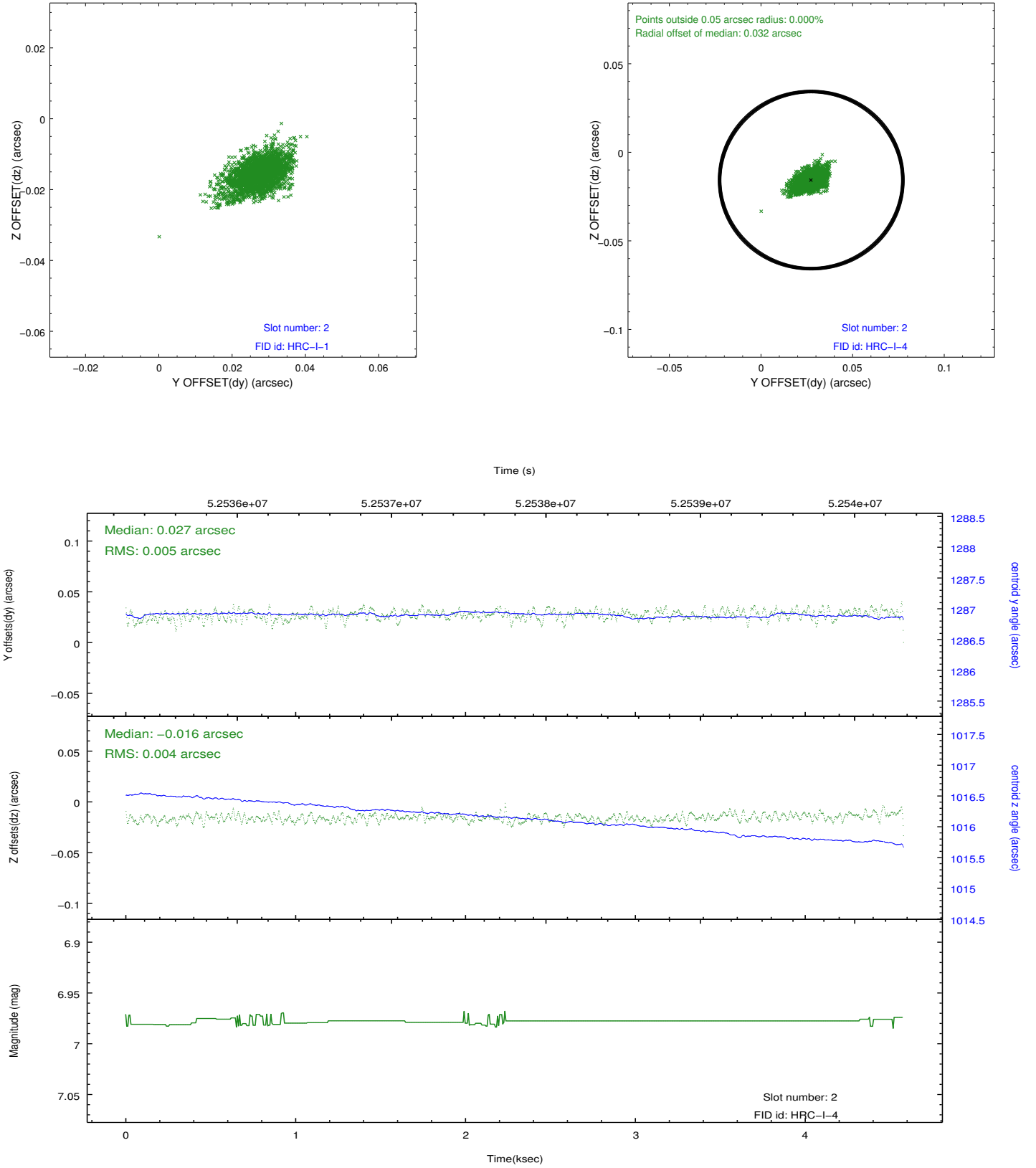
2.5.1 Slot 0



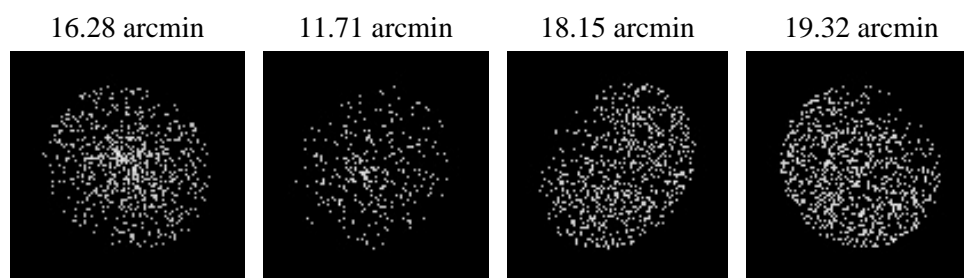
2.5.2 Slot 1



2.5.3 Slot 2



3 Point Sources



A Summary

A.1 Status

V&V Scientist	Joy Nichols
V&V Date (YYYY-MM-DD)	2010.01.21
V&V Edition	1
V&V Disposition and Status	OK
V&V Charge Time	3.925

A.2 Comments

Observation out of focus. Onboard load reset the focus position to
-505
instead of the desired -900.===Mosaic background/HRC-I