

V&V Reference Report

L2 ASCDS Version : 8.4.5

Observation 11890 - L2 Version 2
Chandra X-Ray Center

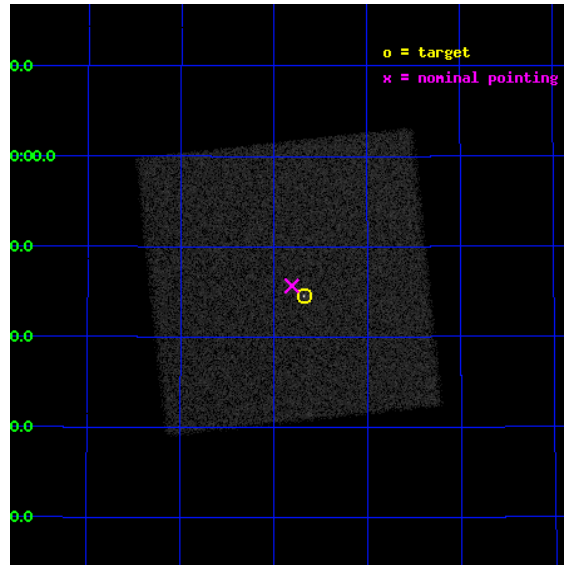
L2 Processing Date : Jul 3 2012

Contents

1	Front	2
2	OBI	3
2.1	OBI	3
2.1.1	Images	3
2.1.2	Parameters	4
2.1.3	Events	4
2.2	Compared Parameters	5
2.3	Aspect	6
2.4	Star Slots	9
2.4.1	Slot 3	9
2.4.2	Slot 4	10
2.4.3	Slot 5	11
2.4.4	Slot 6	12
2.4.5	Slot 7	13
2.5	FID Slots	14
2.5.1	Slot 0	14
2.5.2	Slot 1	15
2.5.3	Slot 2	16
A	Summary	17
A.1	Status	17
A.2	Comments	17

1 Front

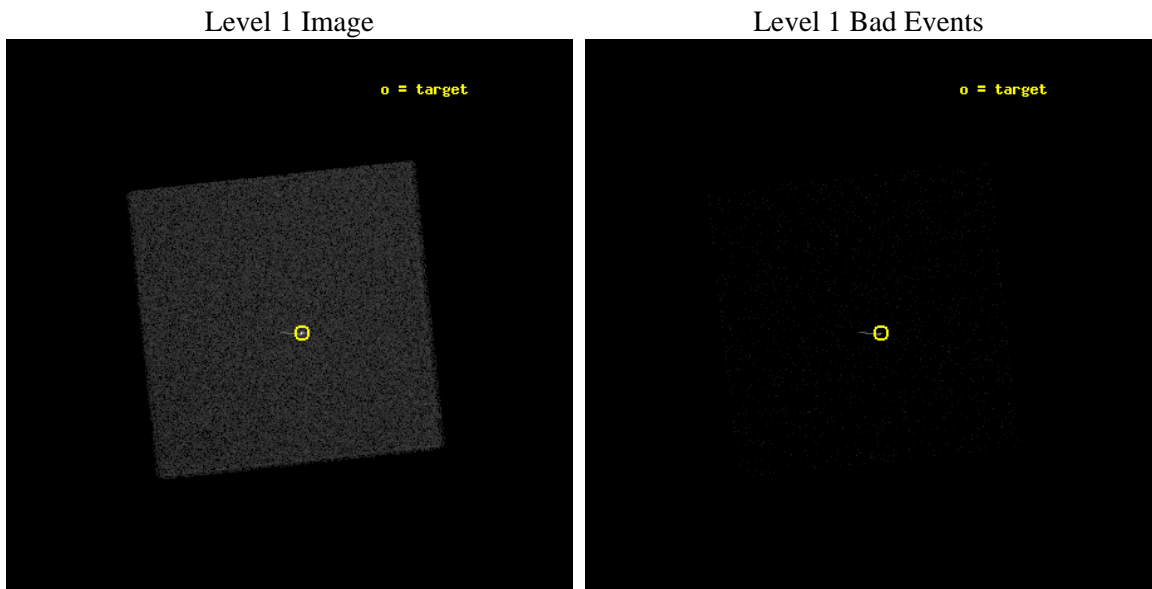
seq_num	290879	Sequence number
obs_id	11890	Observation id
title	AO-11 Calibration Observations to Monitor the Spatial Variations in the HRC-I Gain	Proposal title
observer	Dr. CXC Calibration	Principal investigator
object	ArLac	Source name
ra_targ	332.17	Observer's specified target RA [deg]
dec_targ	45.742306	Observer's specified target Dec [deg]
ra_nom	332.20222216038	Nominal RA [deg]
dec_nom	45.761320923264	Nominal Dec [deg]
roll_nom	218.85875328554	Nominal Roll [deg]
revision	2	Processing version of data
ontime	1182.0813106894	[s]
livetime	1169.1194811039	Ontime multiplied by DTCOR
l2events	91096	Number of level 2 events



2 OBI

2.1 OBI

2.1.1 Images



2.1.2 Parameters

obi_num	0	Obi number	sched_exp_time	1000.000000	[s] Scheduled observation exposure time
ascdsver	8.4.5	Processing system revision	ontime	1182.0813106894	[s]
caldbver	4.5.0	 	l1events	160966	Number of level 1 events
date	2012-07-03T23:51:13	Date and time of file creation			
revision	2	Processing version of data			

2.1.3 Events

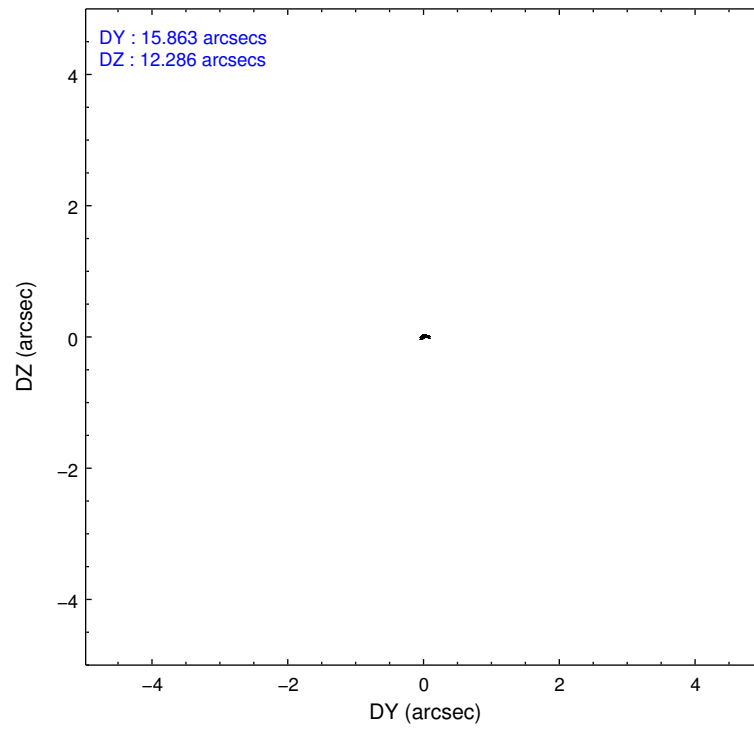
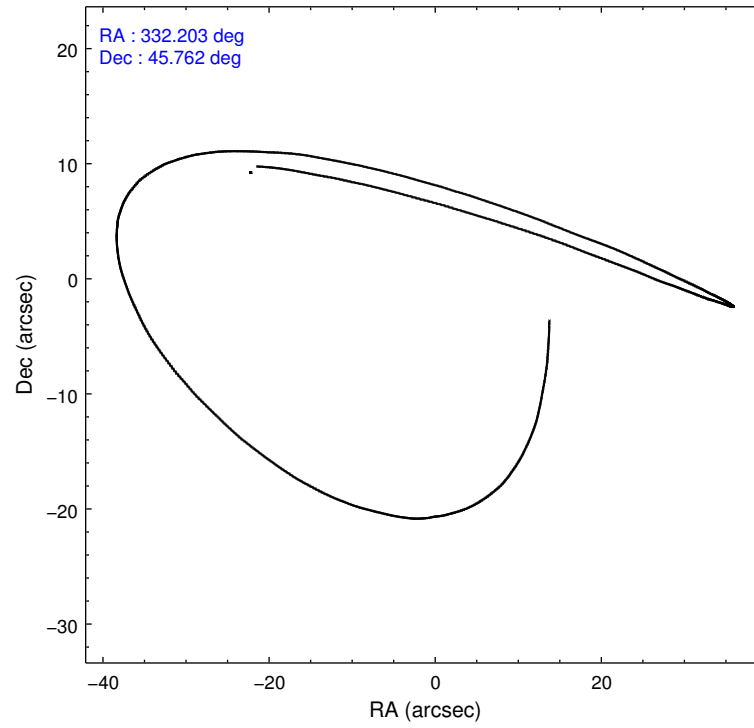
Level 1 Events

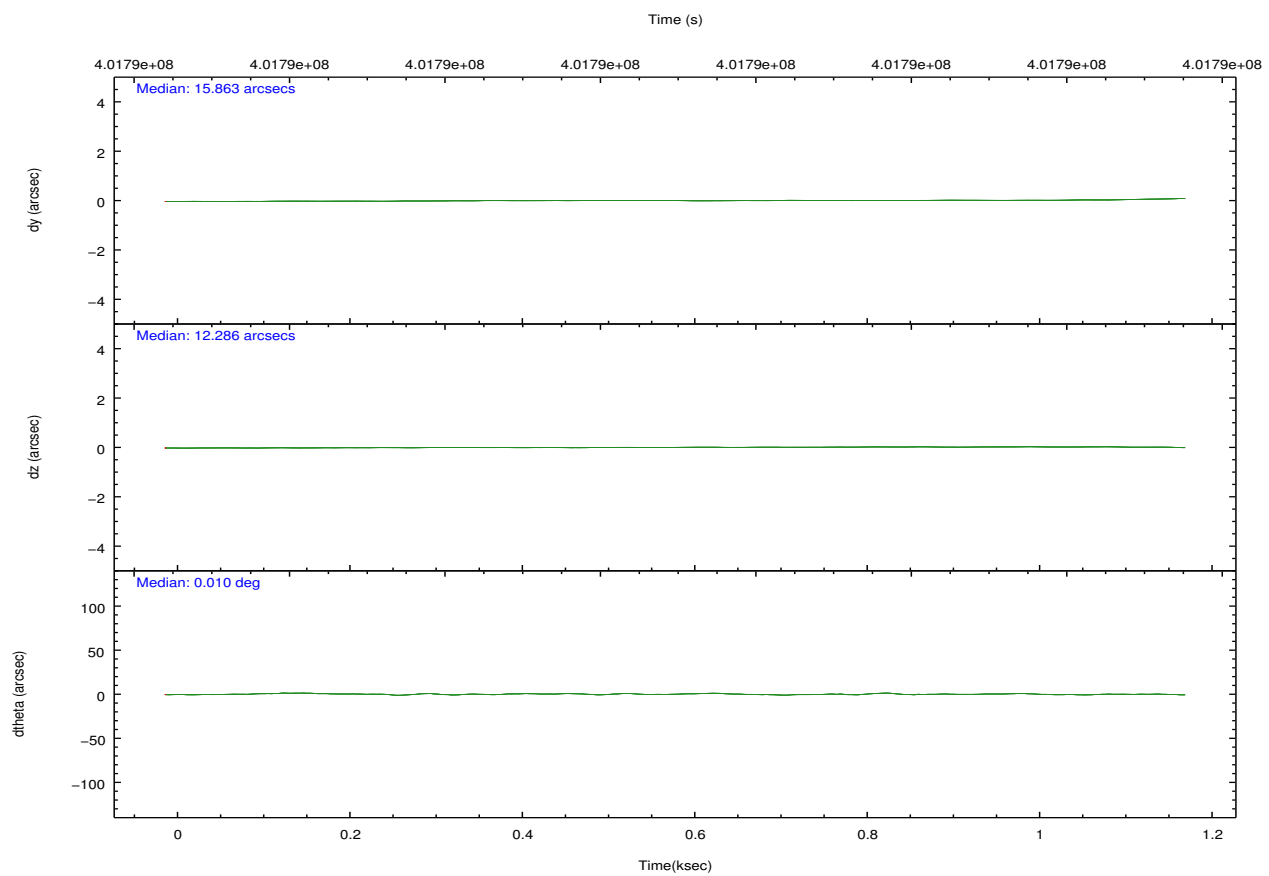
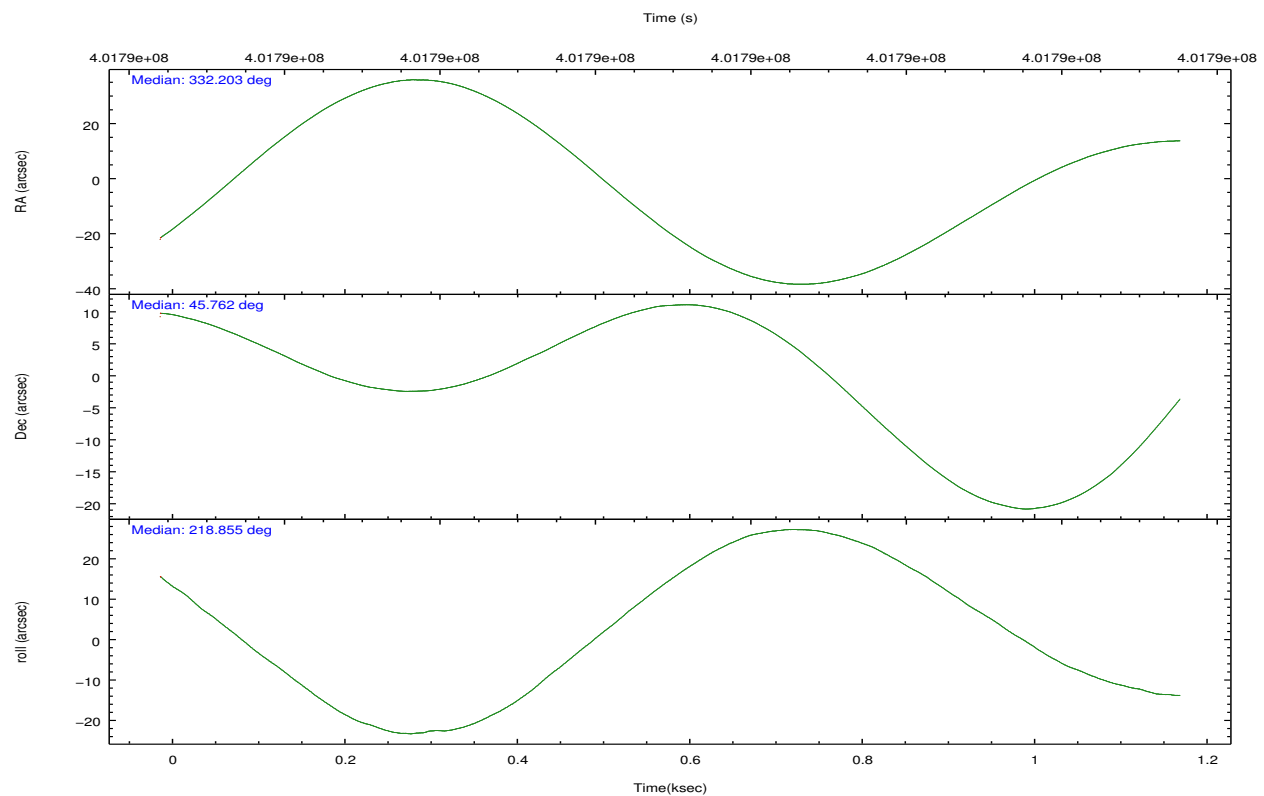
	segment 0
level 1 events	160966
rejected events	34971
rejected %	21%

2.2 Compared Parameters

Parameter	Planned	Actual	Parameter	Planned	Actual
Instrument	HRC	HRC	Obspar format version number	7	7
Detector	HRC-I	HRC-I	Obspar file type	PREDICTED	ACTUAL
Grating	NONE	NONE	Obspar update status	NONE	UPDATED
Data mode	OBSERVING	OBSERVING			
Observation mode	POINTING	POINTING			
[deg] Pointing RA	332.214584	332.2022221603796			
[deg] Pointing Dec	45.787599	45.76132092326394			
[deg] Pointing Roll	218.945339	218.8587532855441			
[mm] SIM focus pos	-1.040293	-1.038866356238299			
[mm] SIM defocus	0	0.001426264420575141			
[mm] SIM translation stage pos	126.985494	126.9829799899862			
[mm] SIM translation stage offset	0	0.002508901615314585			
[s] Observation start time (MET)	401792073.184000	401791697.12562			
Observation start date	2010-09-25T08:53:27	2010-09-25T08:48:17			
[s] Observation end time (MET)	401793073.184000	401793207.46319			
Observation end date	2010-09-25T09:10:07	2010-09-25T09:13:27			

2.3 Aspect



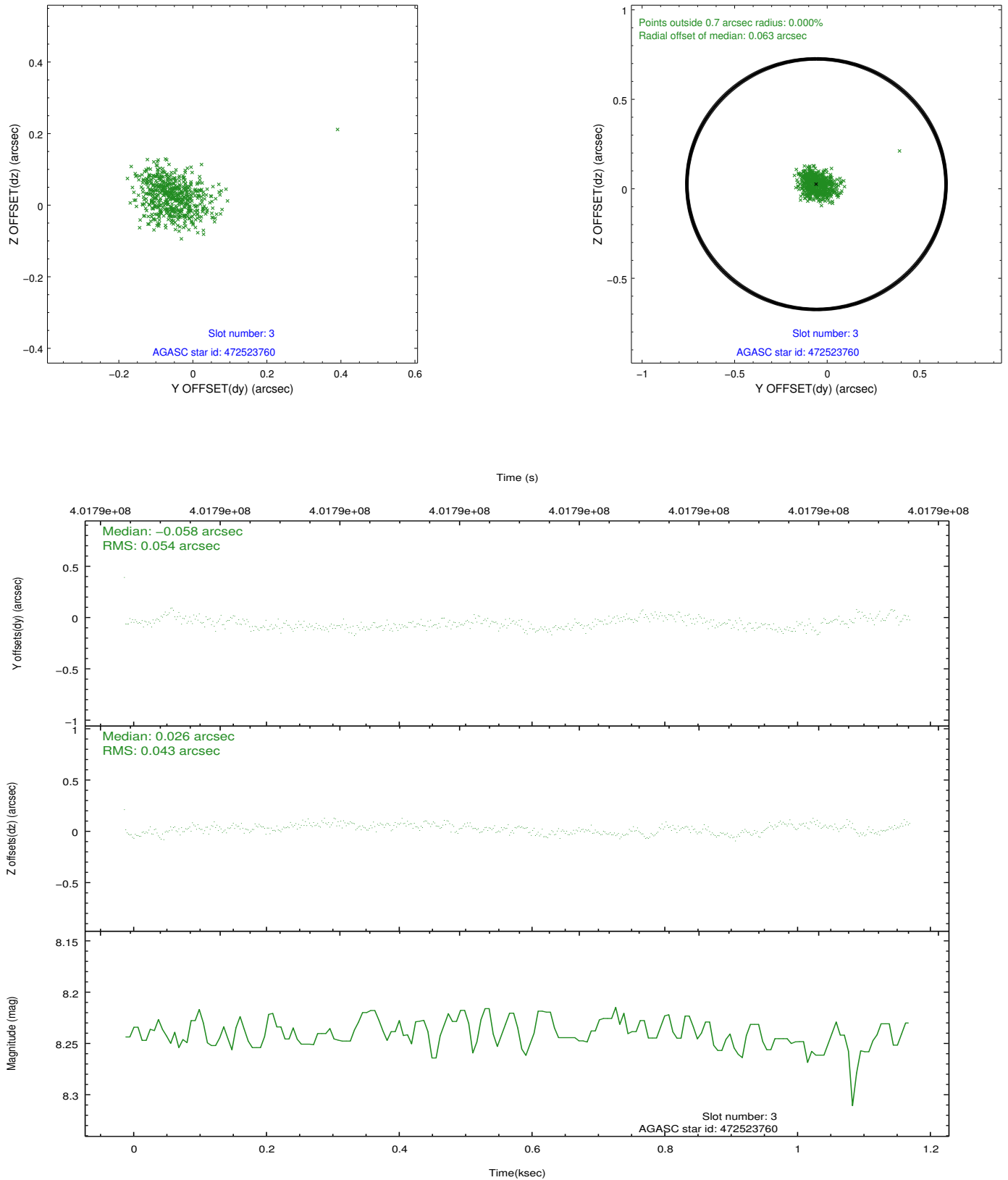


Slot Statistics

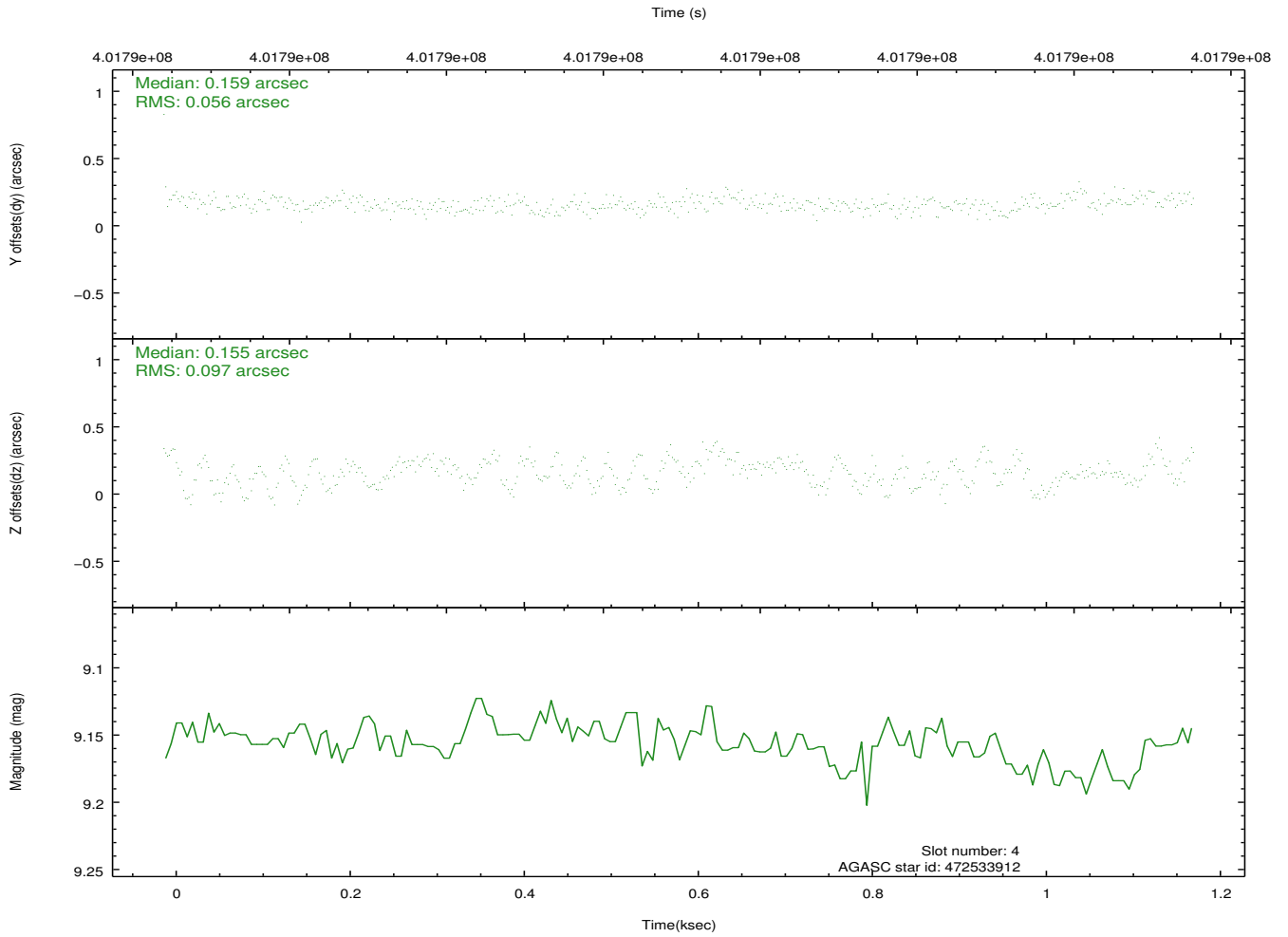
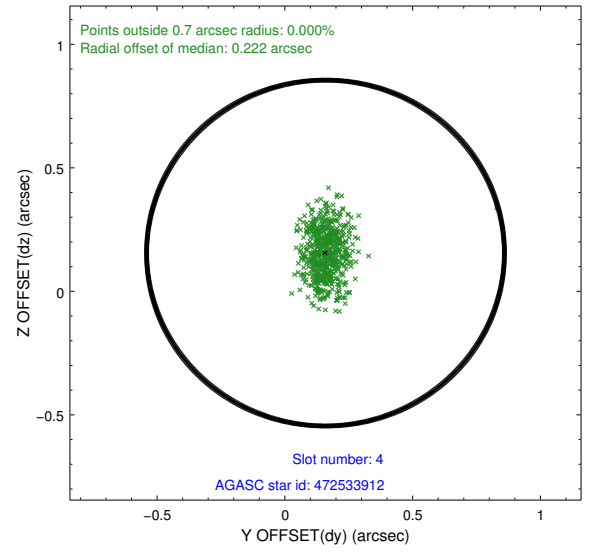
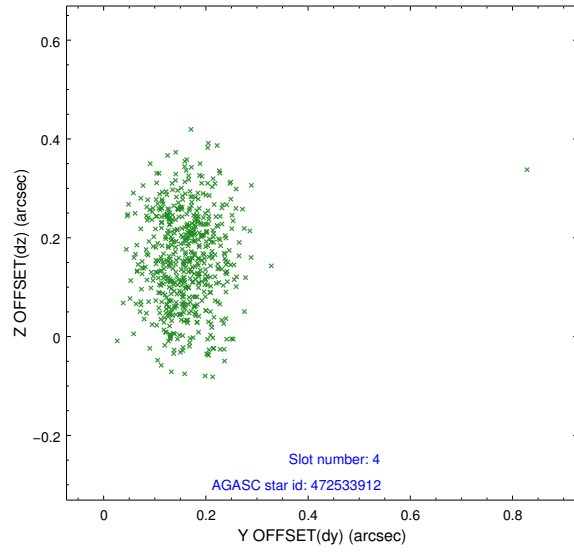
slot	status	id	mag	n_pts	med_dy	med_dz	dr1	dr2	ra	dec	mean_y	mean_z
0	FID	HRC-I-1	6.96	289	-0.065	0.026	0.008	0.014	0.000000	0.000000	-771.78	-1300.25
1	FID	HRC-I-2	7.00	289	0.229	-0.137	0.007	0.012	0.000000	0.000000	838.47	-1306.51
2	FID	HRC-I-3	7.05	289	-0.045	0.022	0.006	0.011	0.000000	0.000000	-1197.30	999.80
3	GUIDE	472523760	8.24	578	-0.058	0.026	0.071	0.113	331.645363	45.403260	1986.07	164.93
4	GUIDE	472533912	9.16	578	0.159	0.155	0.112	0.189	331.791136	46.368695	-494.41	-2292.89
5	GUIDE	472651904	6.09	578	-0.177	-0.295	0.087	0.143	332.170077	45.742257	189.13	48.69
6	GUIDE	472655152	9.44	575	0.008	-0.065	0.117	0.197	332.504239	45.862991	-735.31	241.39
7	GUIDE	472665256	9.02	577	0.074	0.172	0.089	0.138	332.808125	46.195041	-2076.49	-217.81

2.4 Star Slots

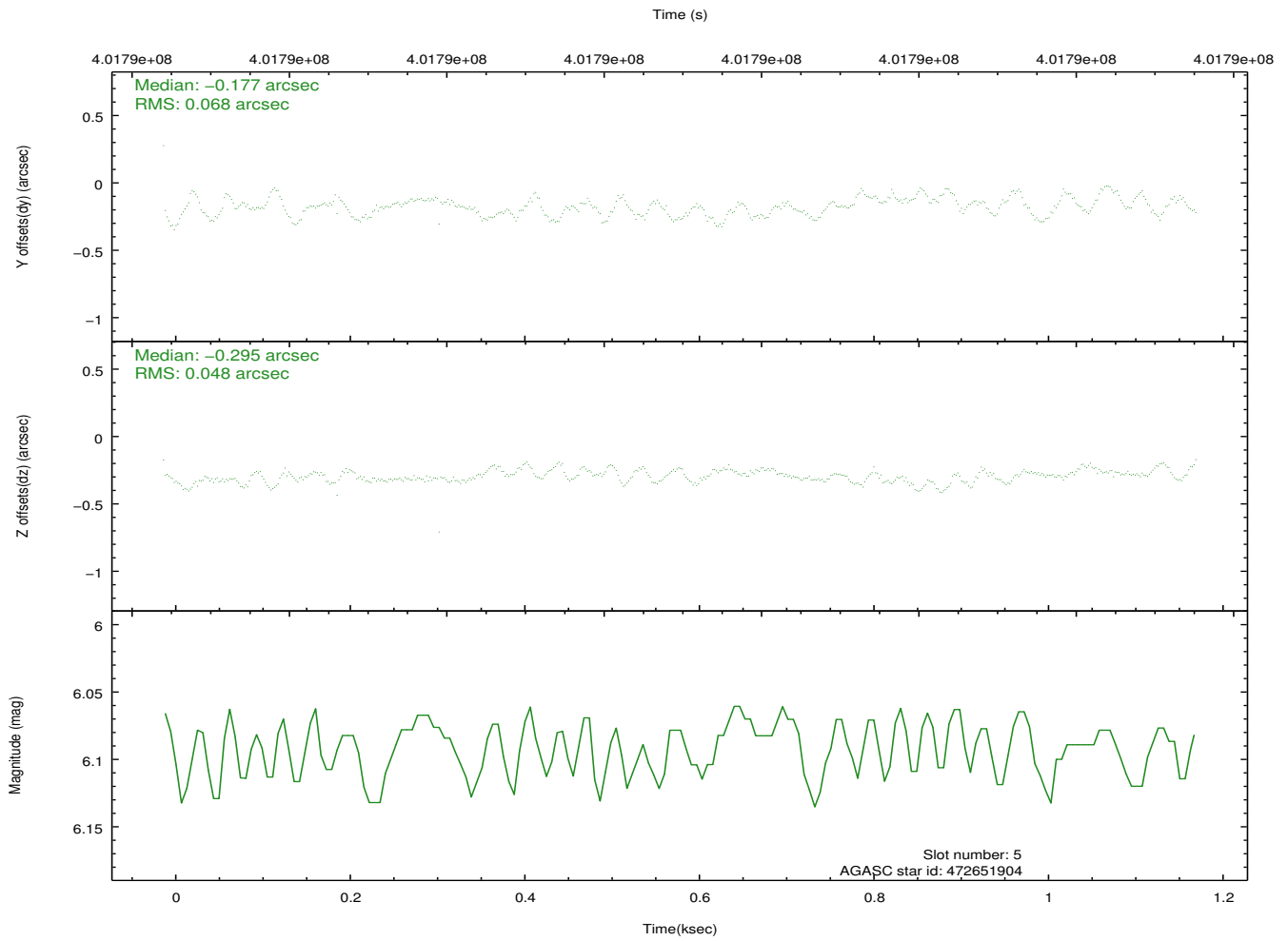
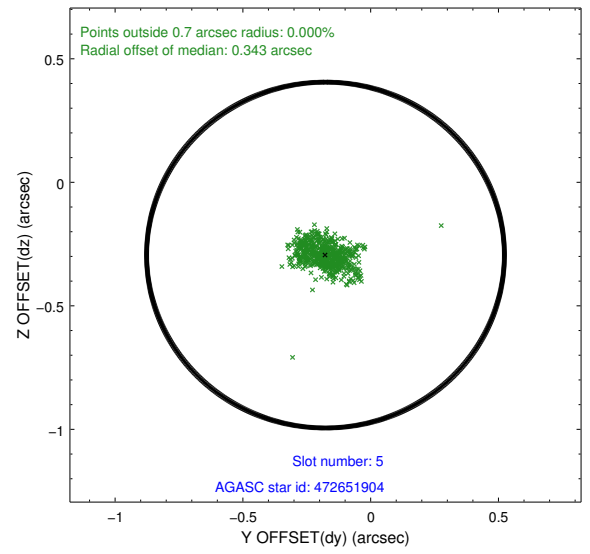
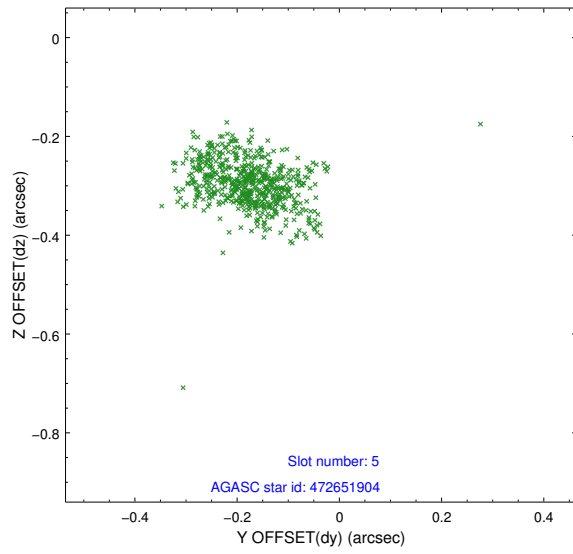
2.4.1 Slot 3



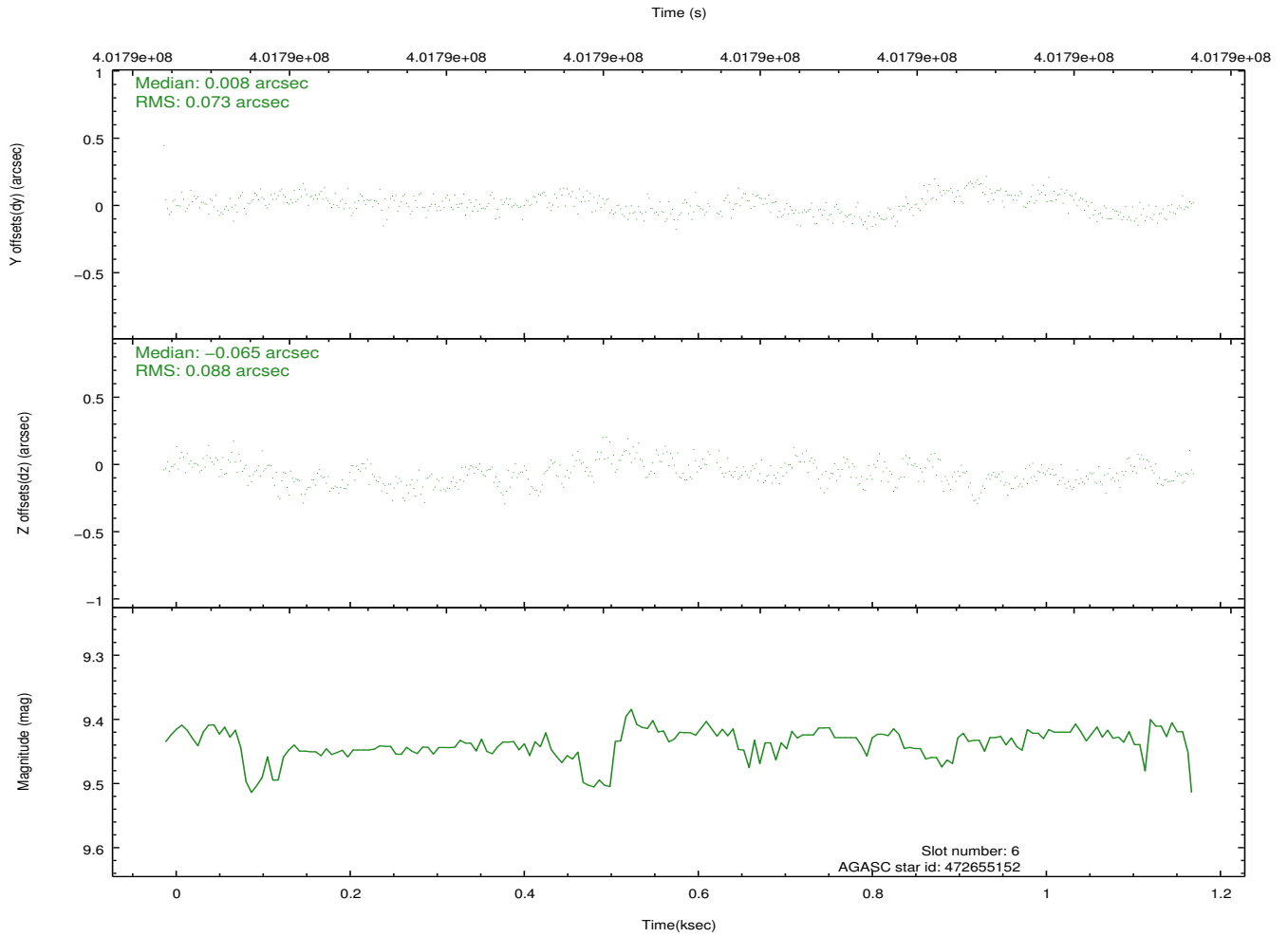
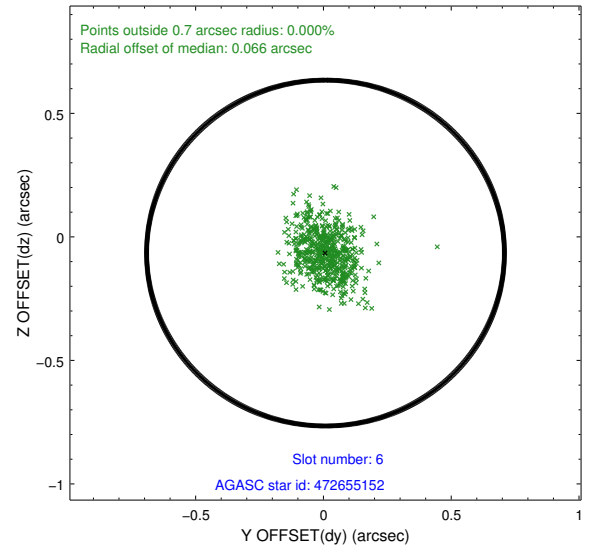
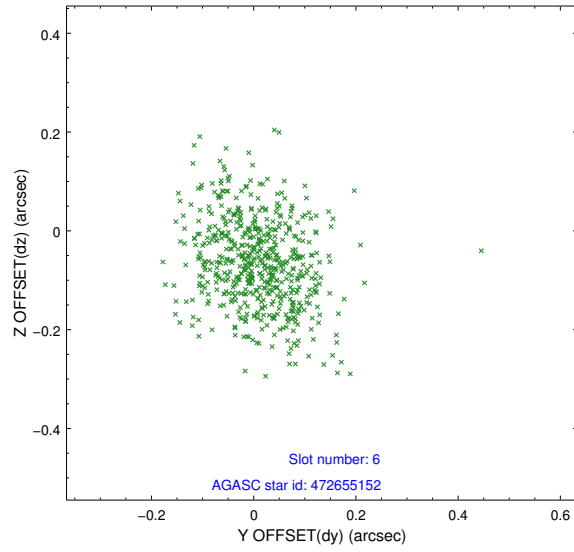
2.4.2 Slot 4



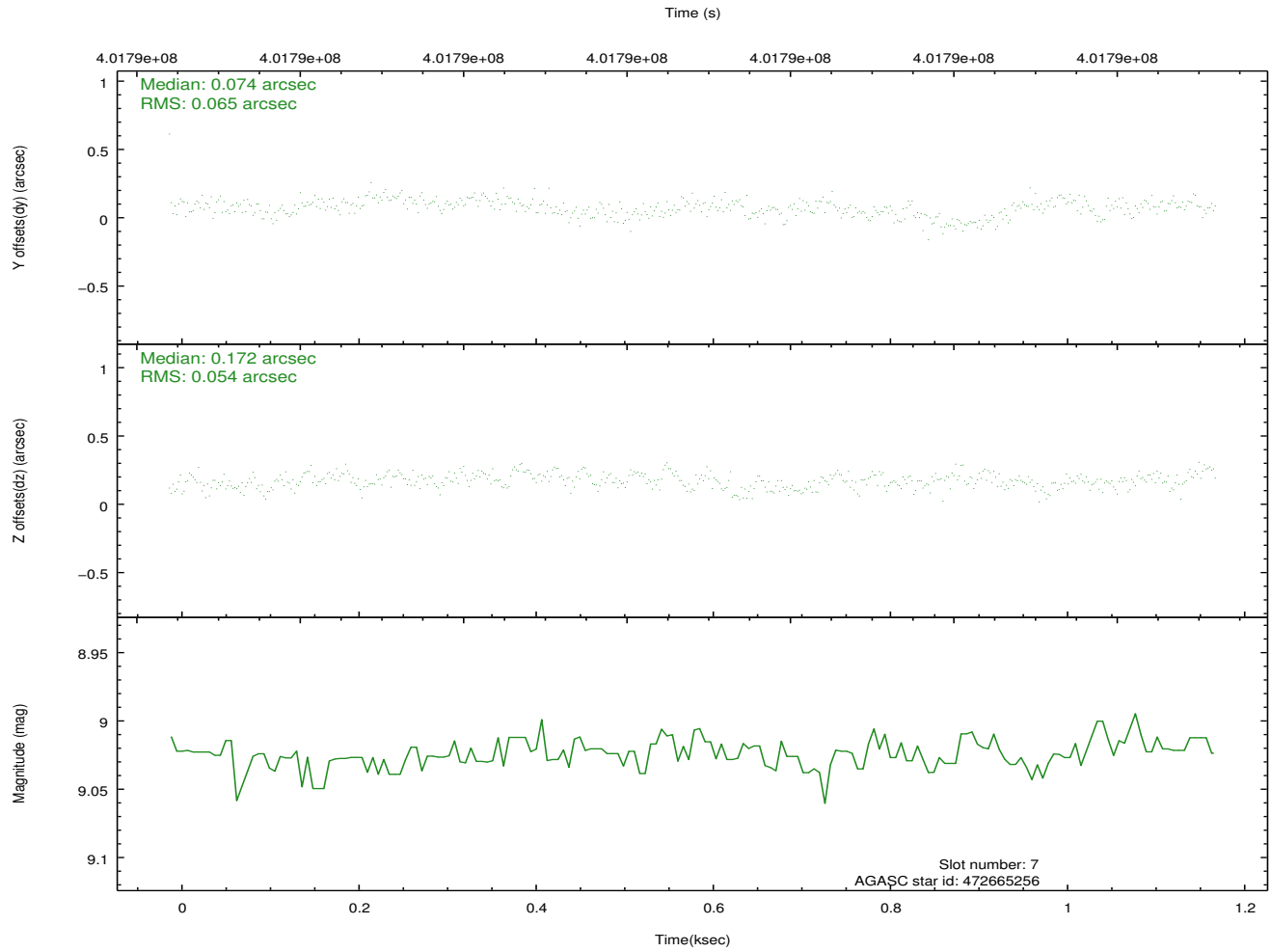
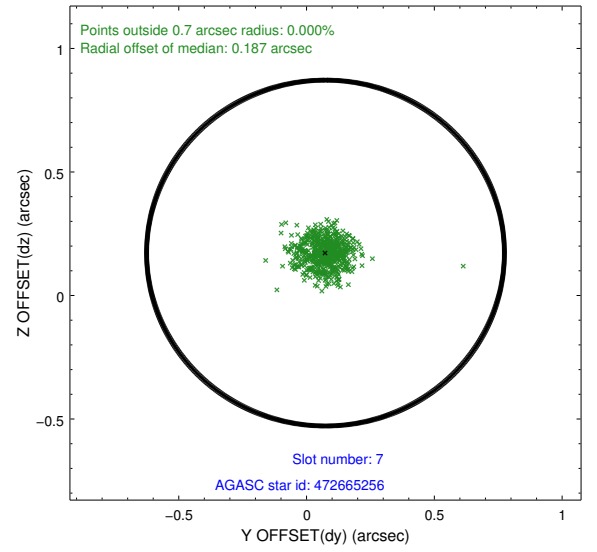
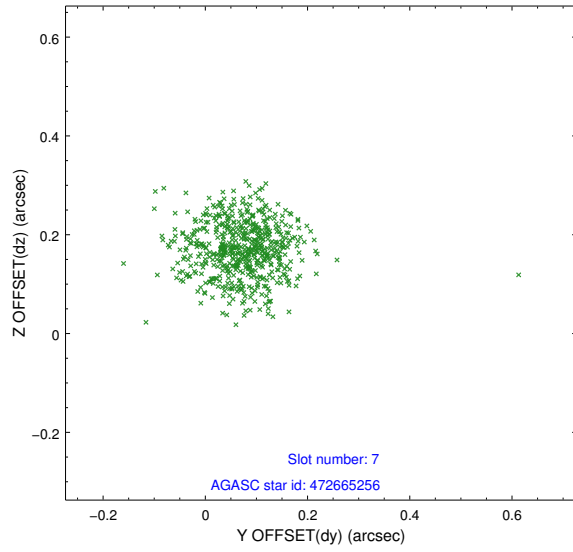
2.4.3 Slot 5



2.4.4 Slot 6

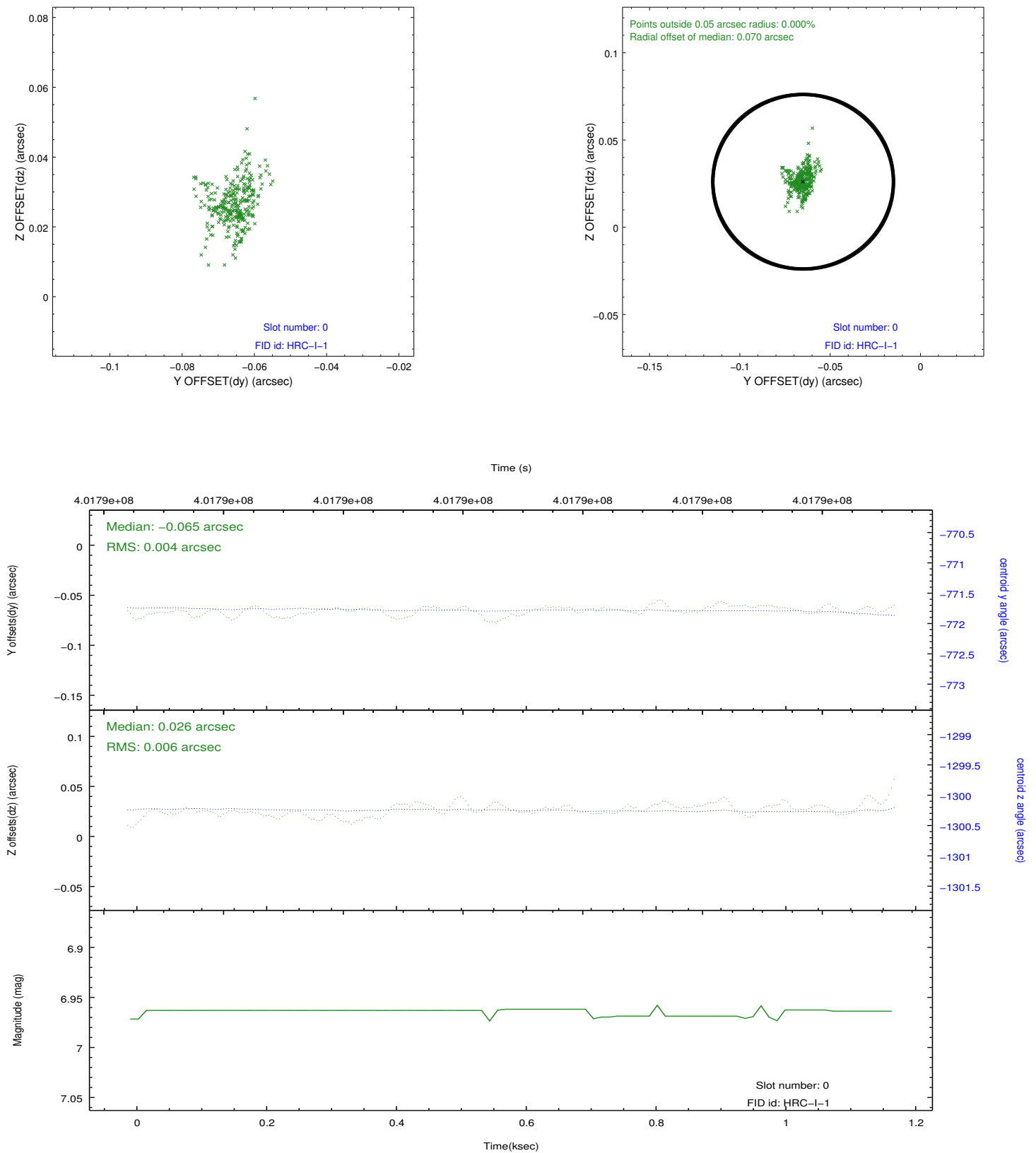


2.4.5 Slot 7

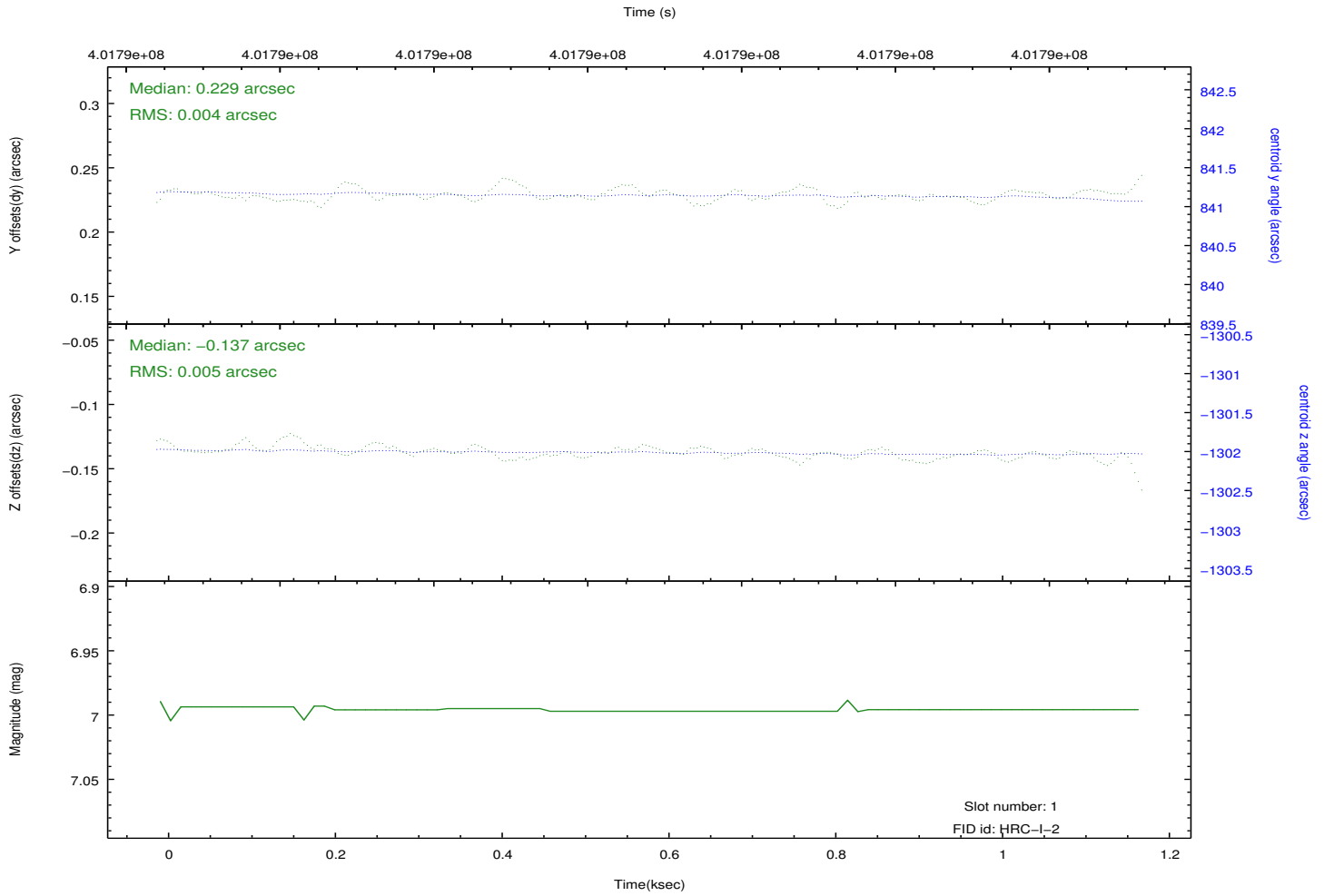
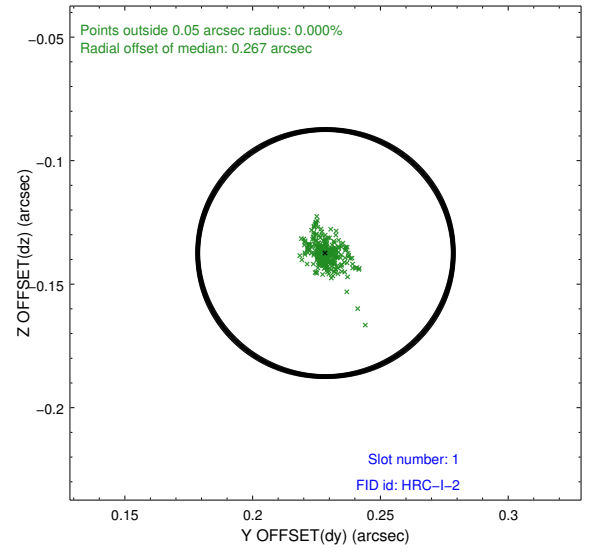
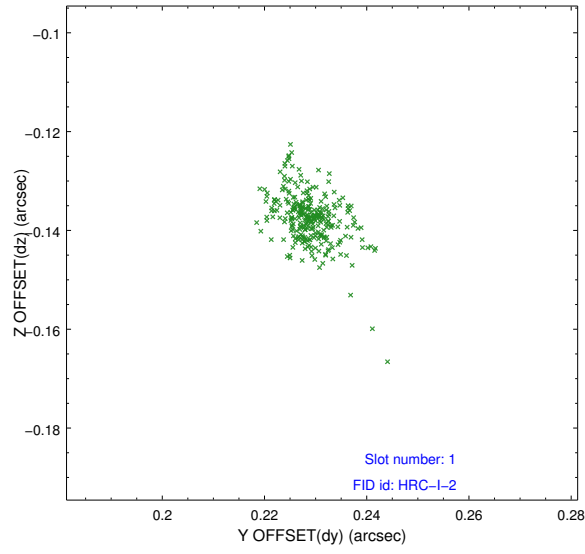


2.5 FID Slots

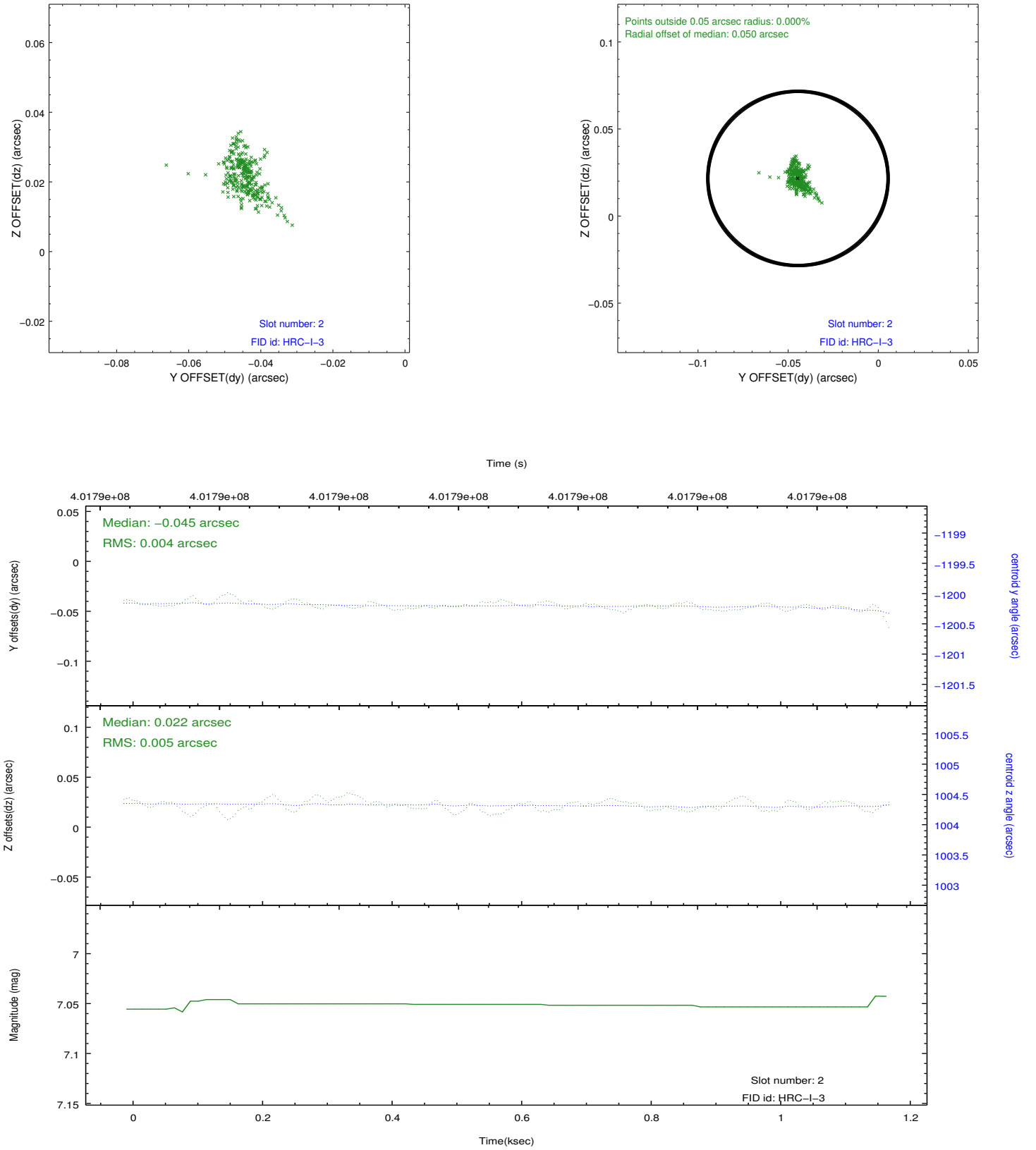
2.5.1 Slot 0



2.5.2 Slot 1



2.5.3 Slot 2



A Summary

A.1 Status

V&V Scientist	Beth Sundheim
V&V Date (YYYY-MM-DD)	2012.07.12
V&V Edition	1
V&V Disposition and Status	OK
V&V Charge Time	1.1820813106894

A.2 Comments