

V&V Reference Report

L2 ASCDS Version : 8.4.5

Observation 11380 - L2 Version 2
Chandra X-Ray Center

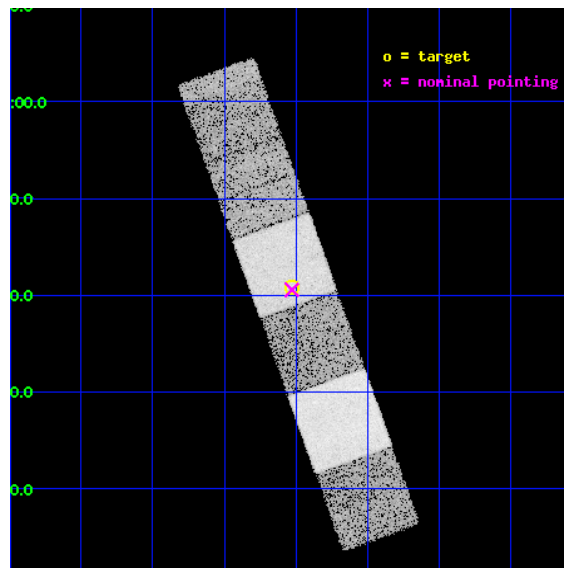
L2 Processing Date : Jul 1 2012

Contents

1	Front	2
2	OBI	3
2.1	OBI	3
2.1.1	Images	3
2.1.2	Bias	3
2.1.3	Parameters	4
2.1.4	Events	4
2.2	Compared Parameters	5
2.3	Aspect	6
2.4	Star Slots	9
2.4.1	Slot 3	9
2.4.2	Slot 4	10
2.4.3	Slot 5	11
2.4.4	Slot 6	12
2.4.5	Slot 7	13
2.5	FID Slots	14
2.5.1	Slot 0	14
2.5.2	Slot 1	15
2.5.3	Slot 2	16
A	Summary	17
A.1	Status	17
A.2	Comments	17

1 Front

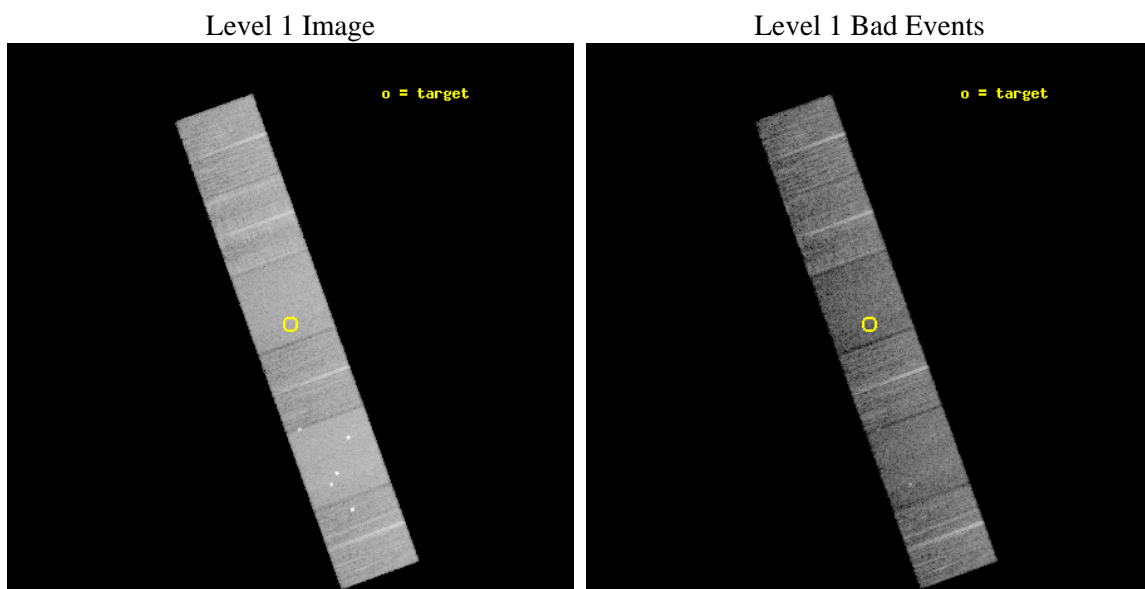
seq_num	600899	Sequence number
obs_id	11380	Observation id
title	Accretion onto nuclear black holes in early type galaxies: comparing field vs. clusters	Proposal title
observer	Elena Gallo	Principal investigator
object	PGC1202458	Source name
dtcycle	0	
cycle	P	events from which exps? Prim/Second/Both
ra_targ	227.756	Observer's specified target RA [deg]
dec_targ	1.68061	Observer's specified target Dec [deg]
ra_nom	227.75703061244	Nominal RA [deg]
dec_nom	1.675888083666	Nominal Dec [deg]
roll_nom	250.15658709017	Nominal Roll [deg]
revision	2	Processing version of data
ontime	11045.156269491	Sum of GTIs [s]
livetime	10905.295850212	Livetime [s]
ontime4	11035.474408567	Sum of GTIs [s]
ontime5	11045.115229487	Sum of GTIs [s]
ontime6	11045.074189484	Sum of GTIs [s]
ontime7	11045.156269491	Sum of GTIs [s]
ontime8	11041.792159259	Sum of GTIs [s]
ontime9	11044.992109478	Sum of GTIs [s]
l2events	137521	Number of level 2 events



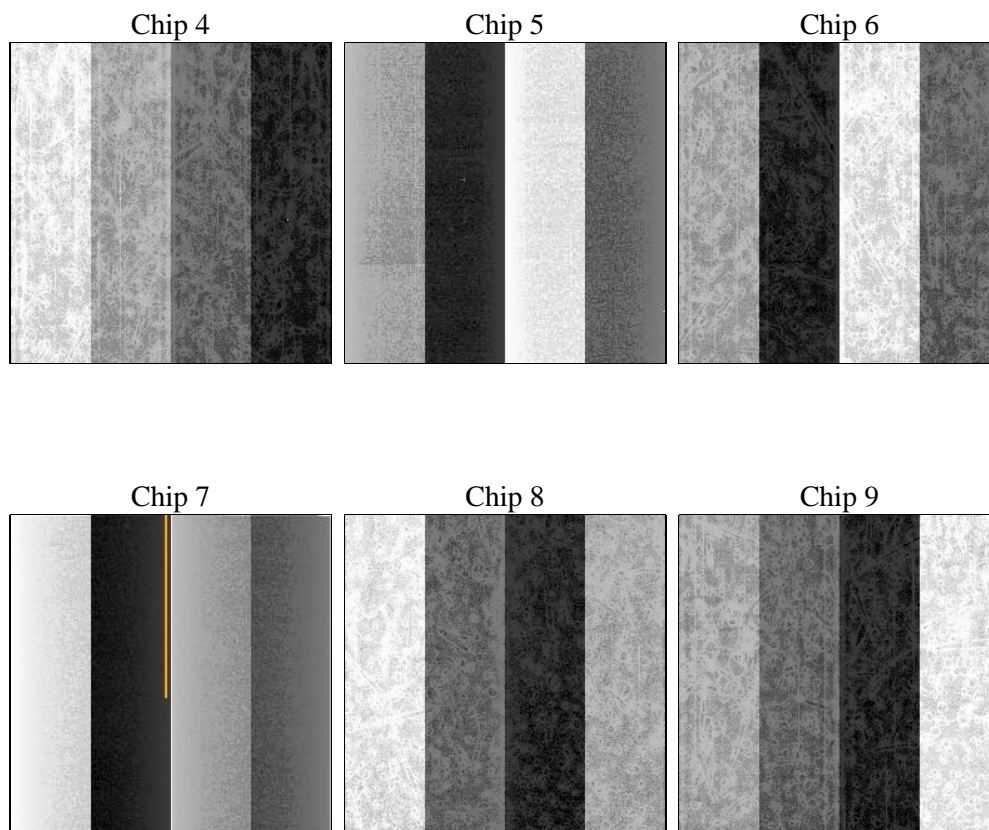
2 OBI

2.1 OBI

2.1.1 Images



2.1.2 Bias



2.1.3 Parameters

obi_num	0	Obi number	sched_exp_time	11000.000000	[s] Scheduled observation exposure time
ascdsver	8.4.5	Processing system revision	ontime	11045.156269491	Sum of GTIs [s]
caldsver	4.5.0	 	ontime4	11035.474408567	Sum of GTIs [s]
date	2012-07-01T16:45:13	Date and time of file creation	ontime5	11045.115229487	Sum of GTIs [s]
revision	2	Processing version of data	ontime6	11045.074189484	Sum of GTIs [s]
			ontime7	11045.156269491	Sum of GTIs [s]
			ontime8	11041.792159259	Sum of GTIs [s]
			ontime9	11044.992109478	Sum of GTIs [s]
			l1events	595050	Number of level 1 events

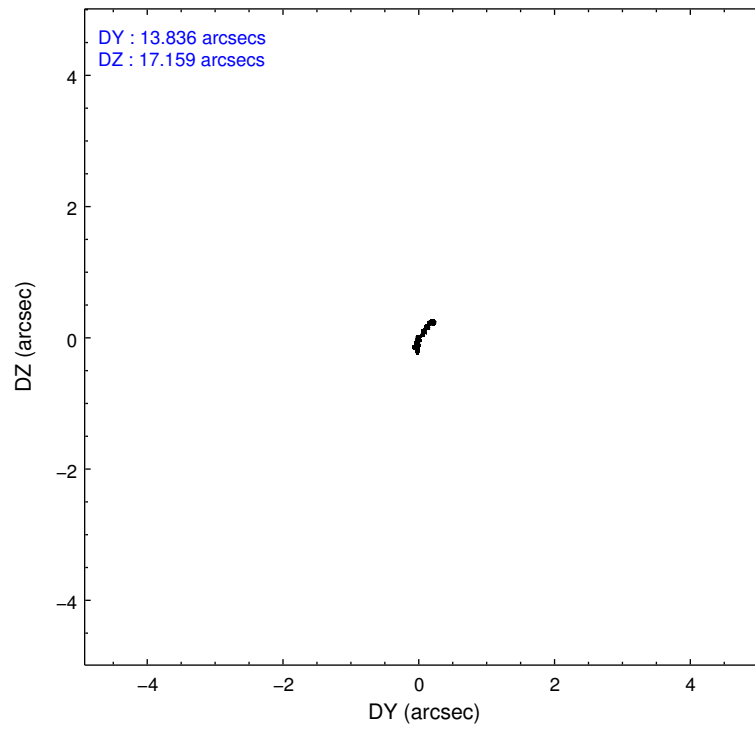
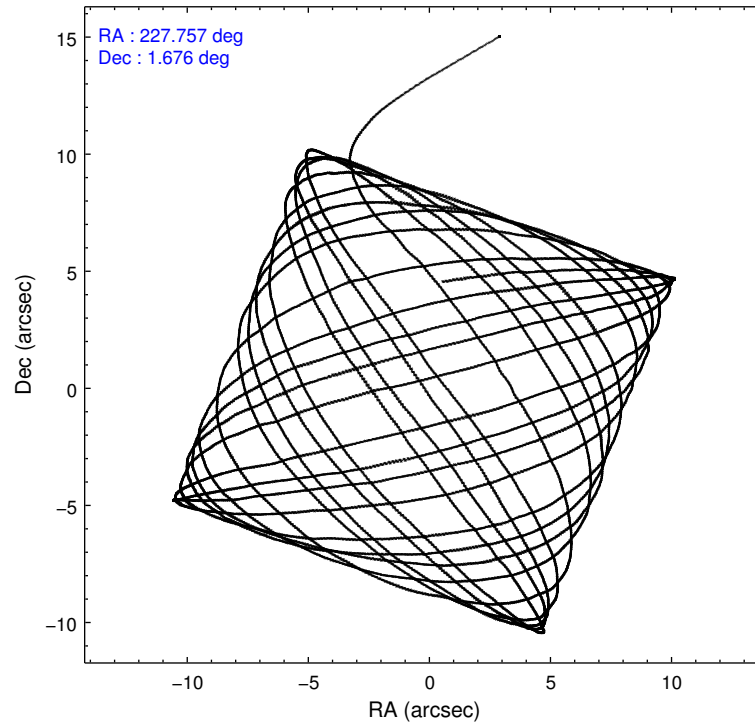
2.1.4 Events

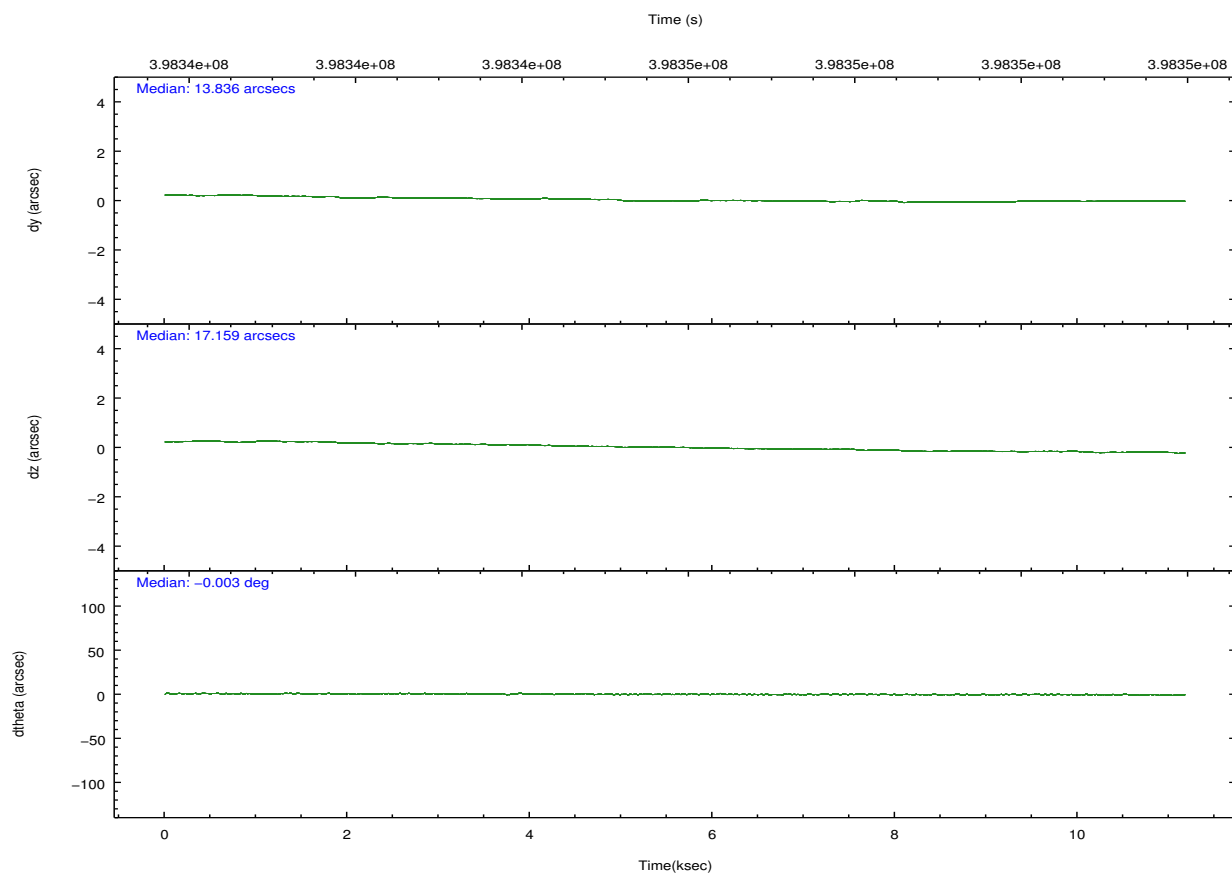
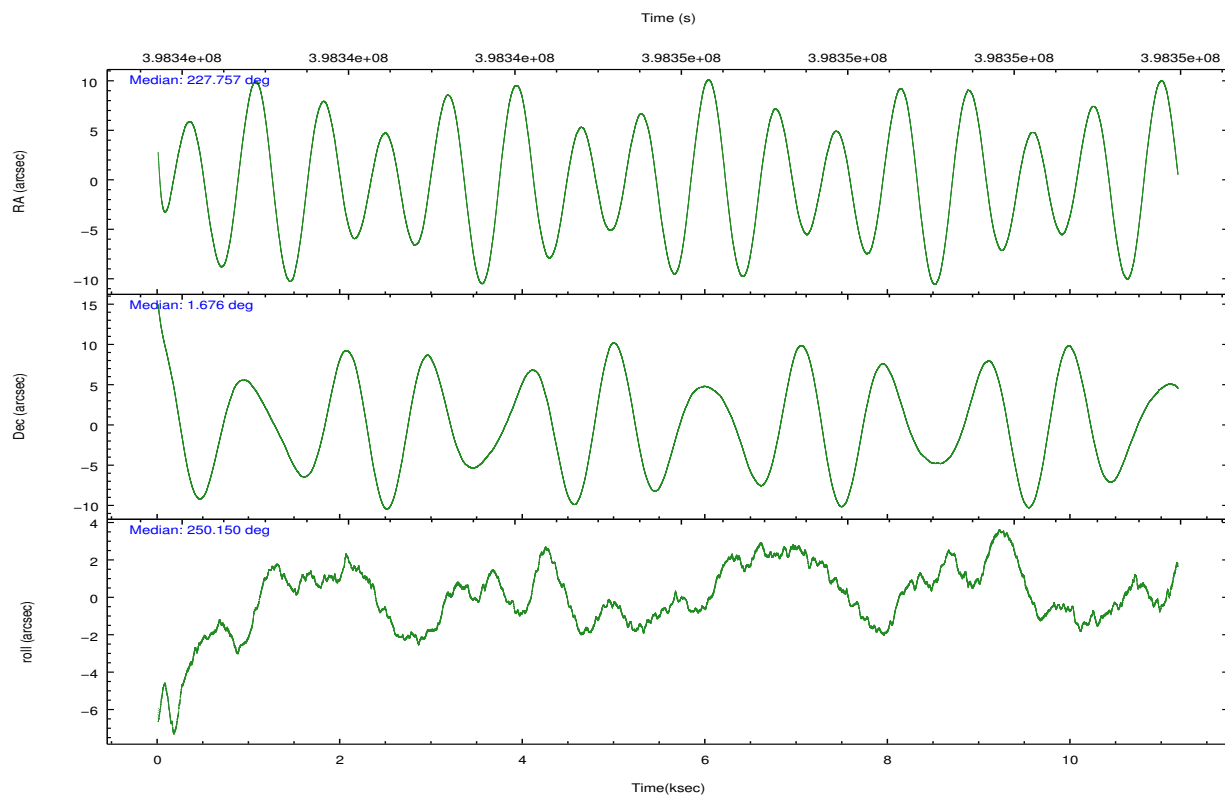
	ccd 4	ccd 5	ccd 6	ccd 7	ccd 8	ccd 9		ccd 4	ccd 5	ccd 6	ccd 7	ccd 8	ccd 9
level 1 events	95008	128697	82585	100292	105067	83401	grade 0 events	6329	9362	3238	4322	9245	3720
rejected events	82569	62964	73517	54677	76468	73364		6%	7%	3%	4%	8%	4%
rejected %	86%	48%	89%	54%	72%	87%	grade 1 events	124	276	29	144	97	49
								0%	0%	0%	0%	0%	0%
							grade 2 events	2406	19109	2048	9411	6474	2144
								2%	14%	2%	9%	6%	2%
							grade 3 events	993	2592	936	4062	2991	1058
								1%	2%	1%	4%	2%	1%
							grade 4 events	1004	2385	945	4188	2783	1042
								1%	1%	1%	4%	2%	1%
							grade 5 events	3700	9602	3592	10450	5241	3963
								3%	7%	4%	10%	4%	4%
							grade 6 events	1710	32309	1903	23648	7110	2075
								1%	25%	2%	23%	6%	2%
							grade 7 events	78742	53062	69894	44067	71126	69350
								82%	41%	84%	43%	67%	83%

2.2 Compared Parameters

Parameter	Planned	Actual	Parameter	Planned	Actual
Instrument	ACIS	ACIS	Obspar format version number	7	7
Detector	ACIS-456789	ACIS-456789	Obspar file type	PREDICTED	ACTUAL
Grating	NONE	NONE	Obspar update status	NONE	UPDATED
Data mode	VFAINT	VFAINT	CCD I0 on	N	N
Observation mode	POINTING	POINTING	CCD I1 on	N	N
[deg] Pointing RA	227.751801	227.7570306124379	CCD I2 on	N	N
[deg] Pointing Dec	1.702713	1.67588808366597	CCD I3 on	N	N
[deg] Pointing Roll	250.000132	250.1565870901652	CCD S0 on	O1	Y
[mm] SIM focus pos	-0.684267	-0.6828225247311905	CCD S1 on	Y	Y
[mm] SIM defocus	0	0.001444936568705701	CCD S2 on	Y	Y
[mm] SIM translation stage pos	-190.132523	-190.1425803651734	CCD S3 on	Y	Y
[mm] SIM translation stage offset	0	0.01005778216563158	CCD S4 on	Y	Y
[s] Observation start time (MET)	398340440.184000	398339276.57358	CCD S5 on	O2	Y
Observation start date	2010-08-16T10:06:14	2010-08-16T09:47:56	Number of optional ACIS chips dropped	0	0
[s] Observation end time (MET)	398351440.184000	398352786.07427	On-chip summing requested	N	N
Observation end date	2010-08-16T13:09:34	2010-08-16T13:33:06	Subarray requested	NONE	NONE
Read mode	TIMED	TIMED	Alternating exposures requested	N	N
			[s] Primary exposure time	0.000000	3.2

2.3 Aspect



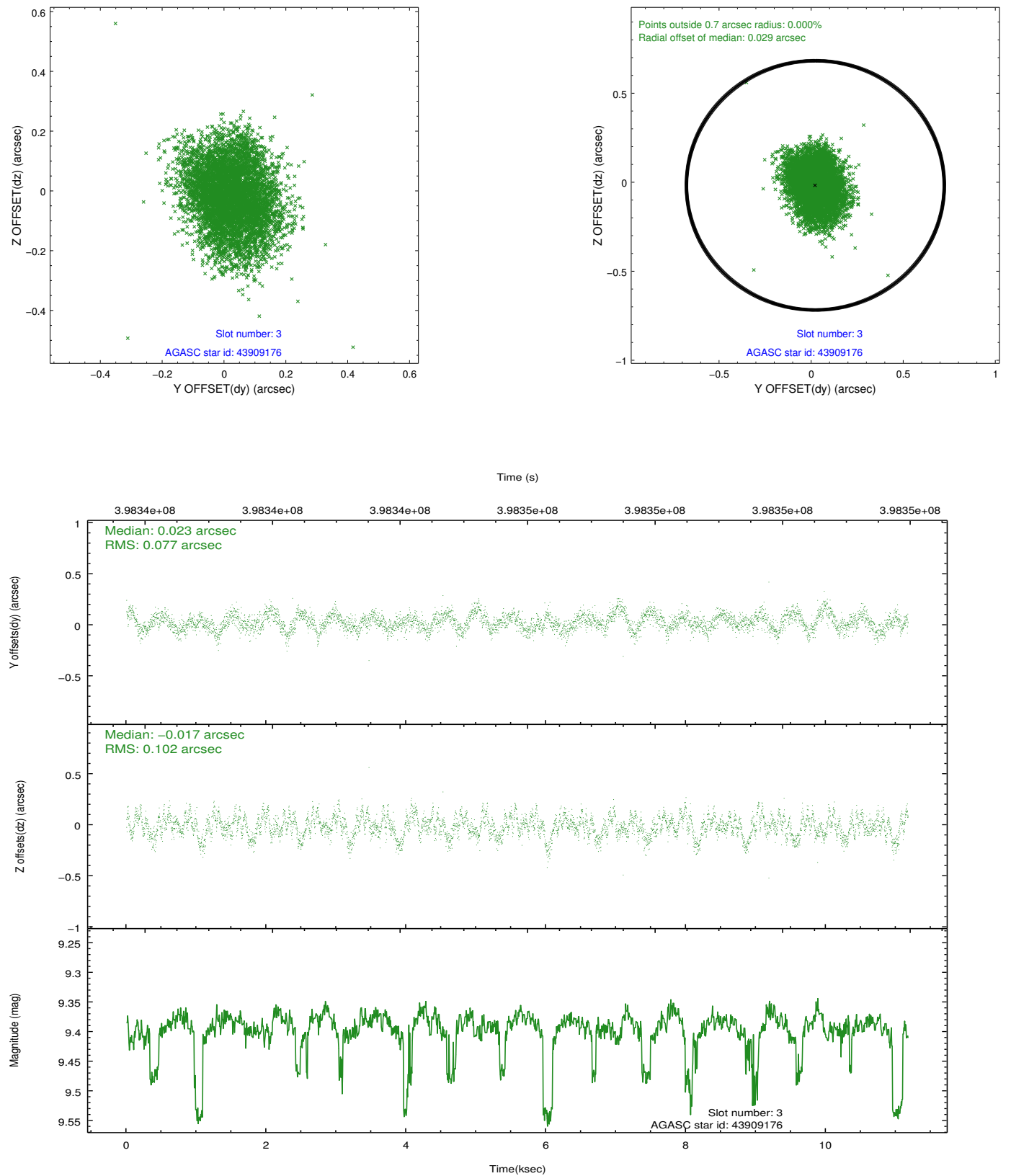


Slot Statistics

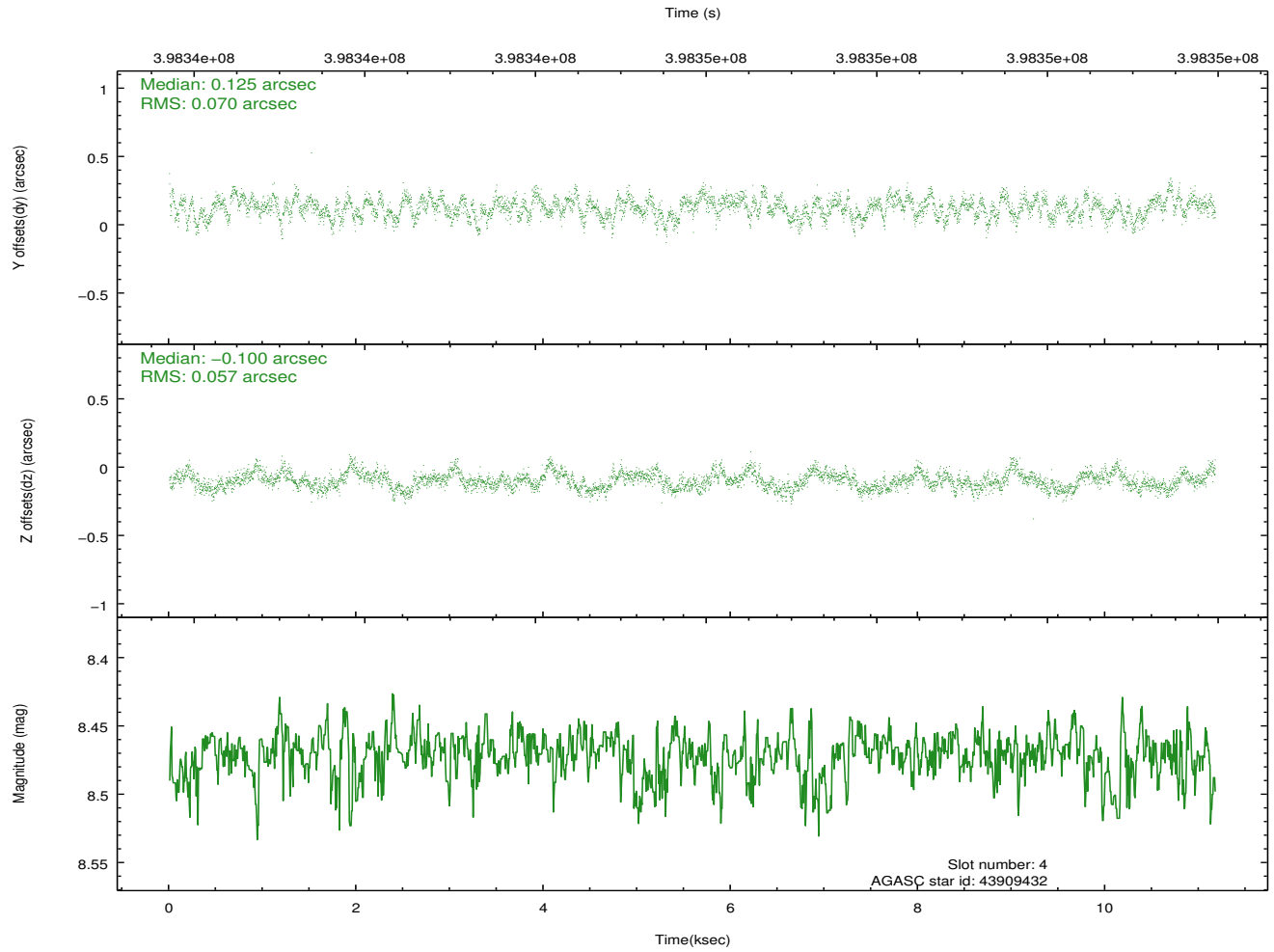
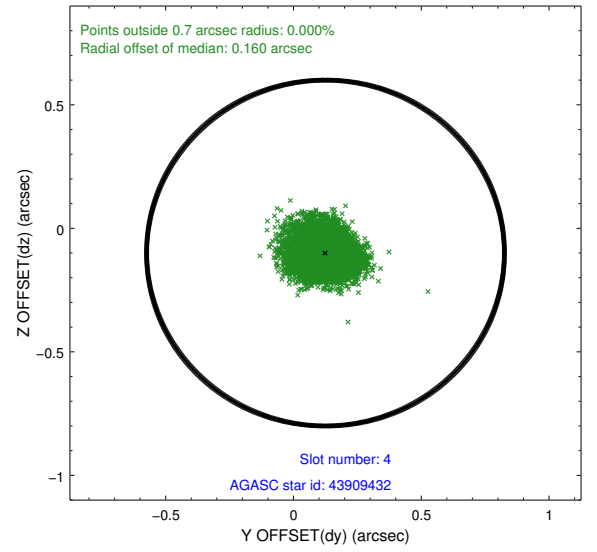
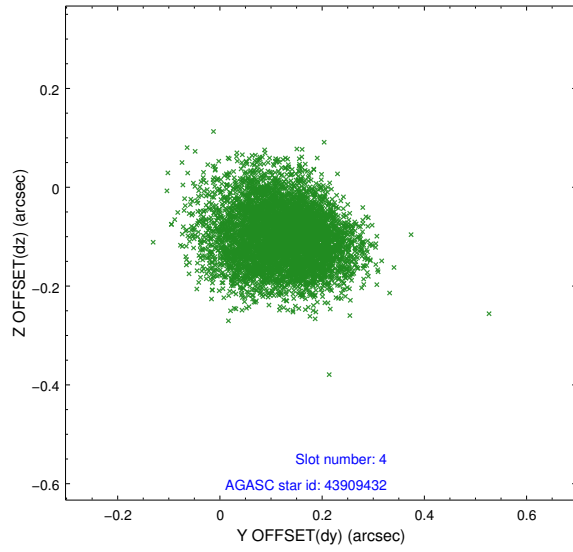
slot	status	id	mag	n_pts	med_dy	med_dz	dr1	dr2	ra	dec	mean_y	mean_z
0	FID	ACIS-S-2	6.88	2725	-0.027	-0.015	0.008	0.012	0.000000	0.000000	-766.88	-1738.55
1	FID	ACIS-S-4	6.96	2725	0.159	0.017	0.005	0.009	0.000000	0.000000	2146.41	169.43
2	FID	ACIS-S-5	6.99	2725	-0.163	0.007	0.007	0.011	0.000000	0.000000	-1819.23	163.69
3	GUIDE	43909176	9.39	5402	0.023	-0.017	0.136	0.218	227.095539	1.632644	1044.98	-2133.44
4	GUIDE	43909432	8.47	5448	0.125	-0.100	0.097	0.156	227.032488	1.308525	2219.58	-1947.47
5	GUIDE	43915392	9.87	5445	0.016	0.002	0.153	0.241	228.358281	1.736508	-860.10	2009.19
6	GUIDE	44437304	9.88	5440	-0.090	0.046	0.157	0.250	228.325658	2.055400	-1899.57	1506.24
7	GUIDE	44437896	9.97	5435	-0.074	0.072	0.220	0.353	228.167990	2.096313	-1842.39	923.39

2.4 Star Slots

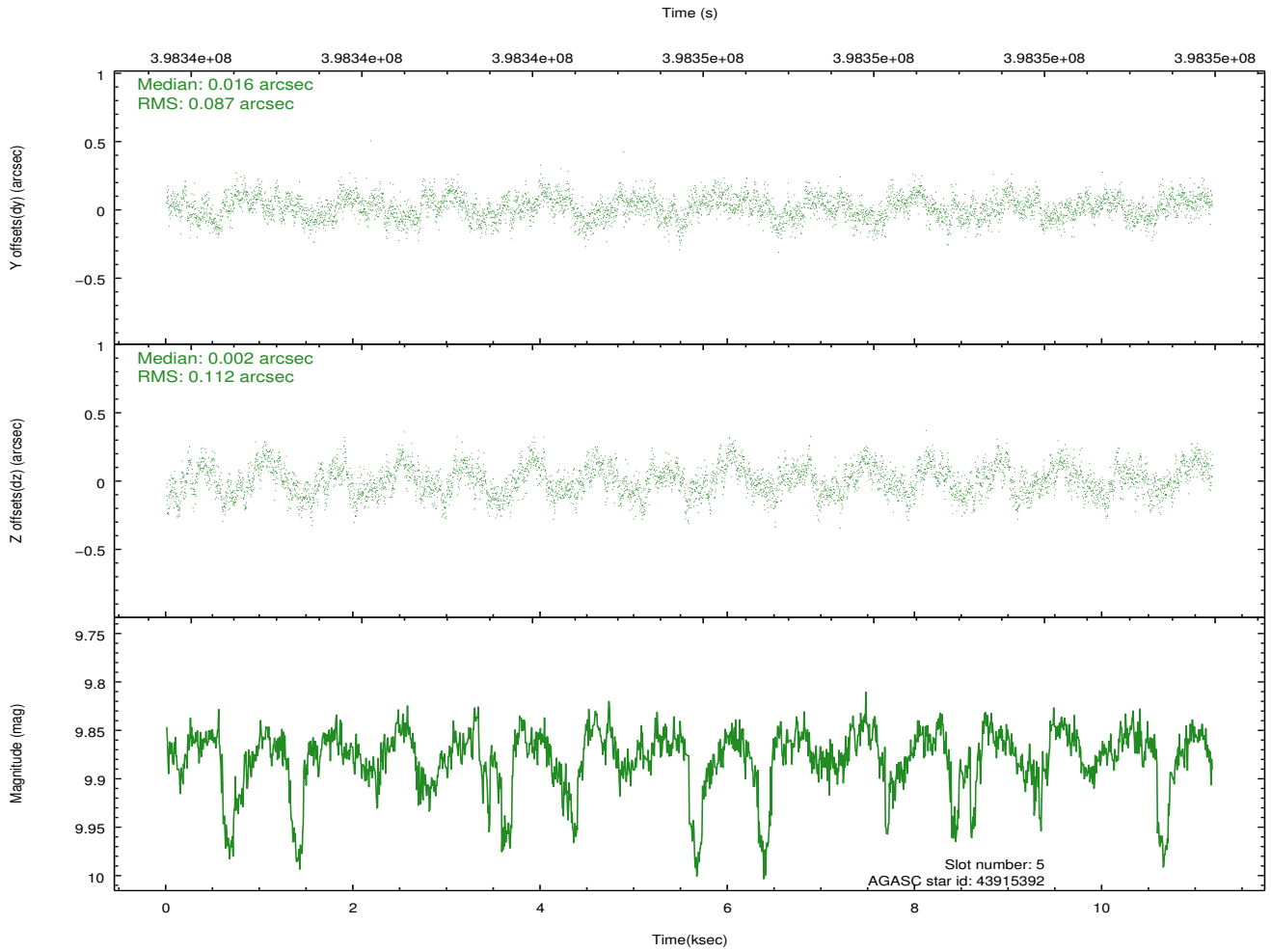
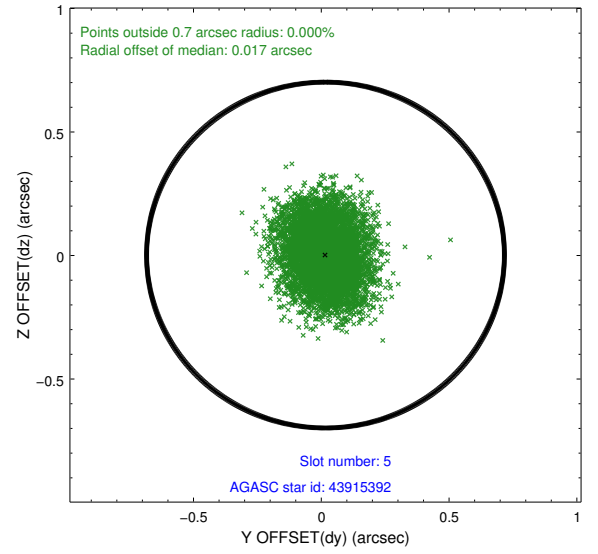
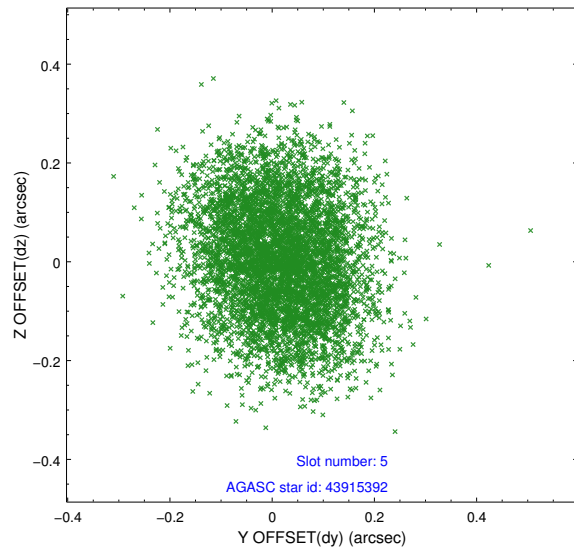
2.4.1 Slot 3



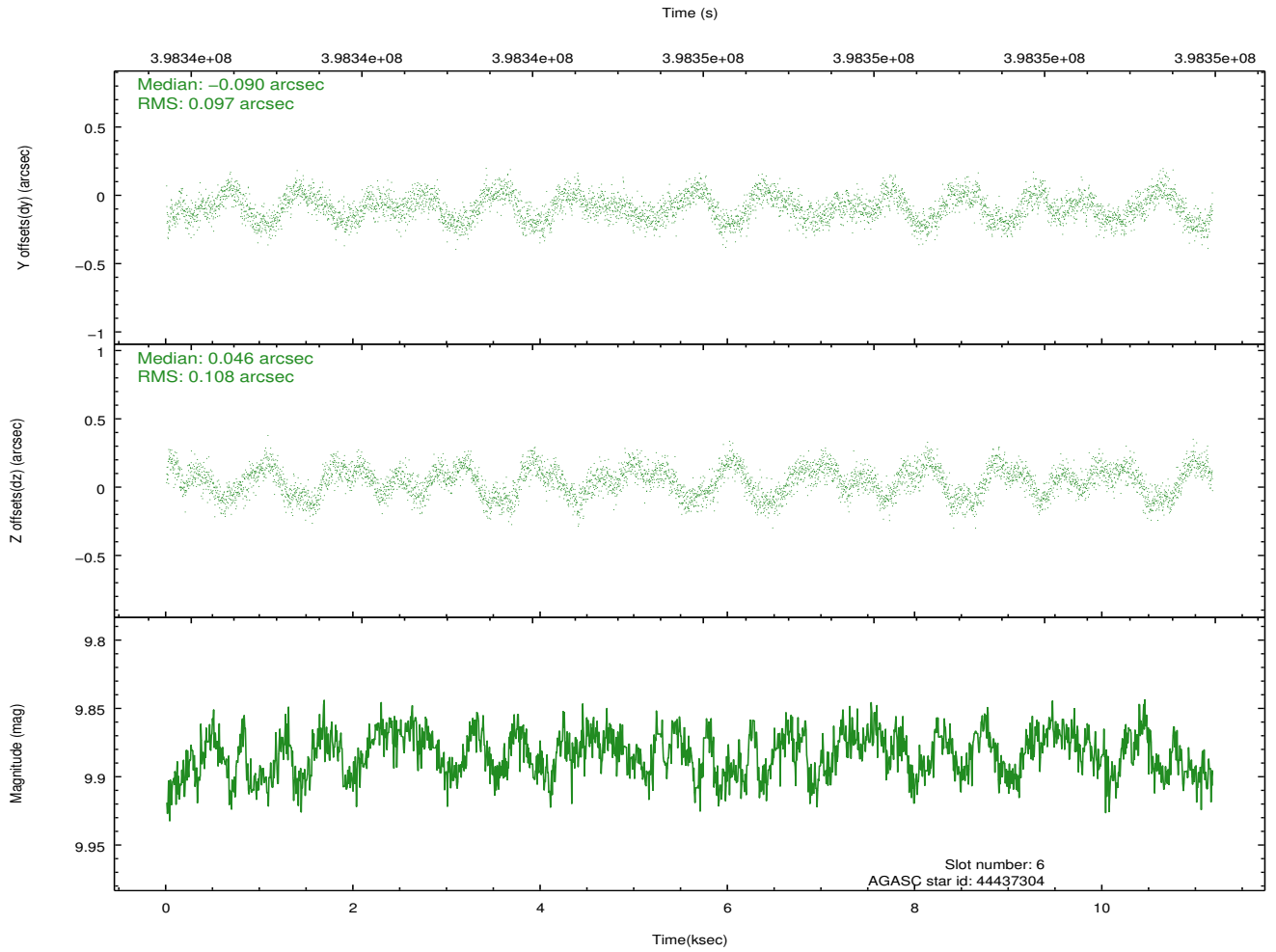
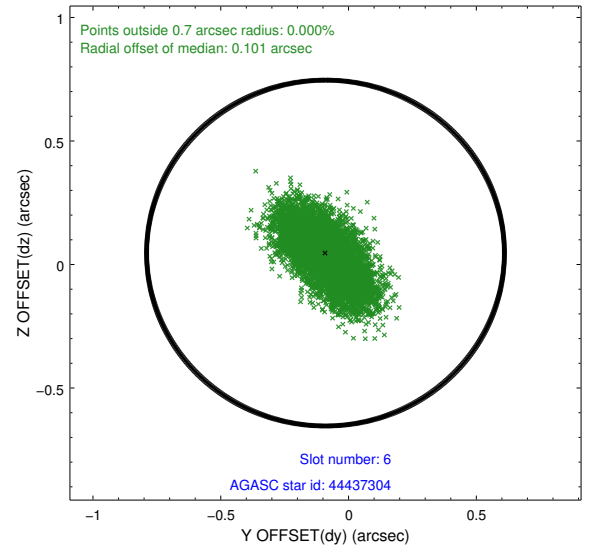
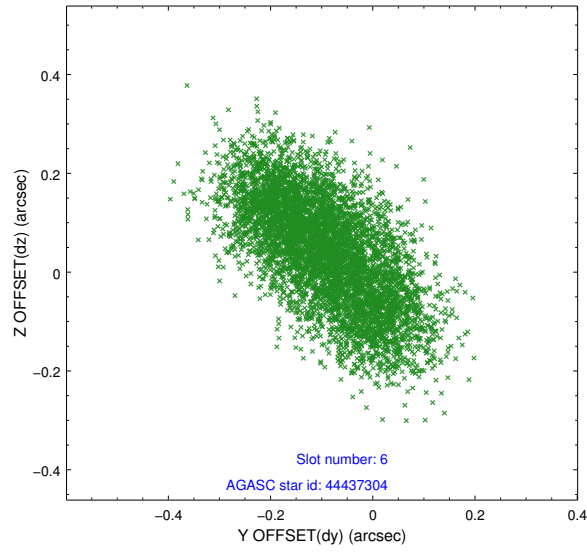
2.4.2 Slot 4



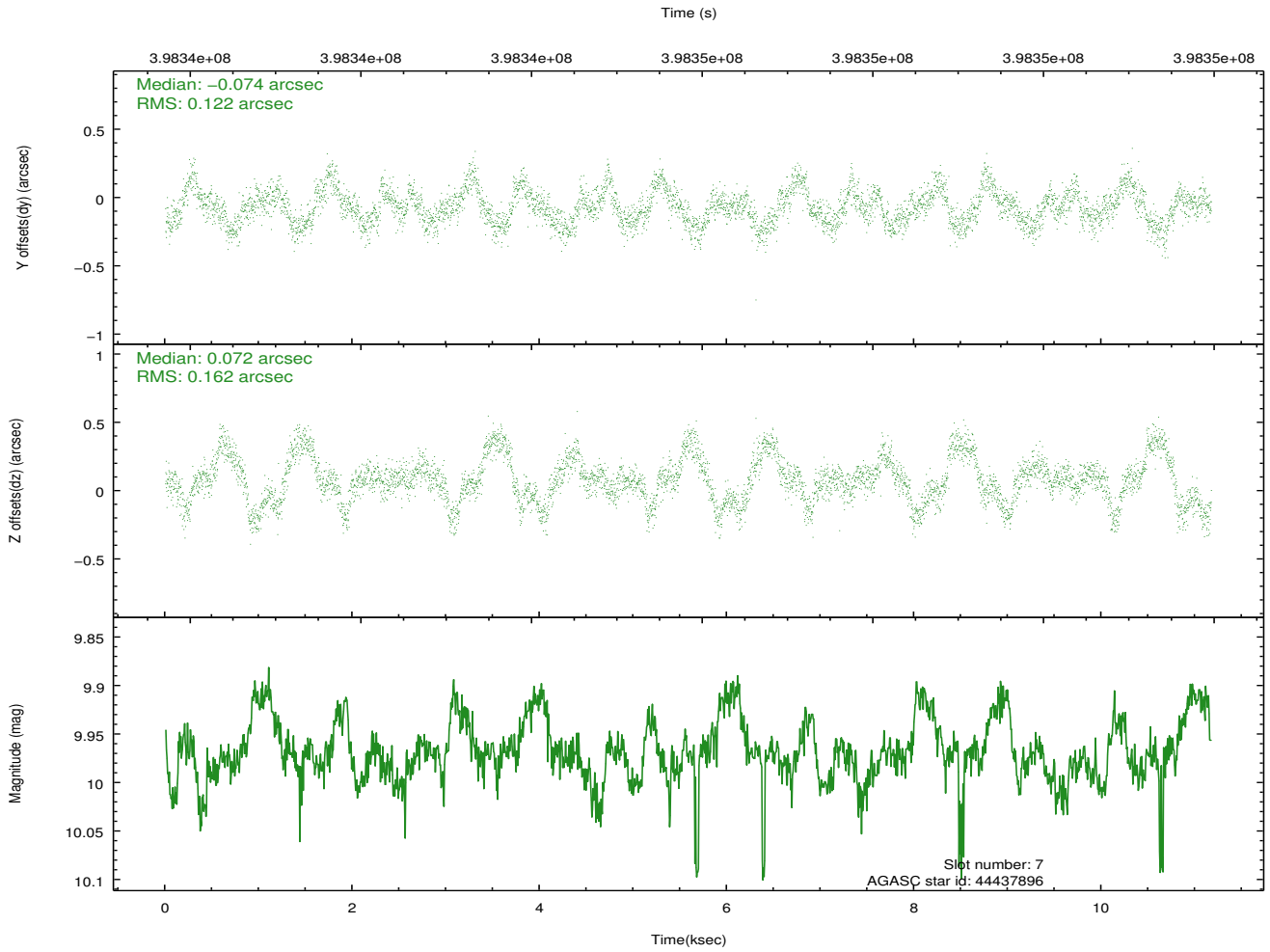
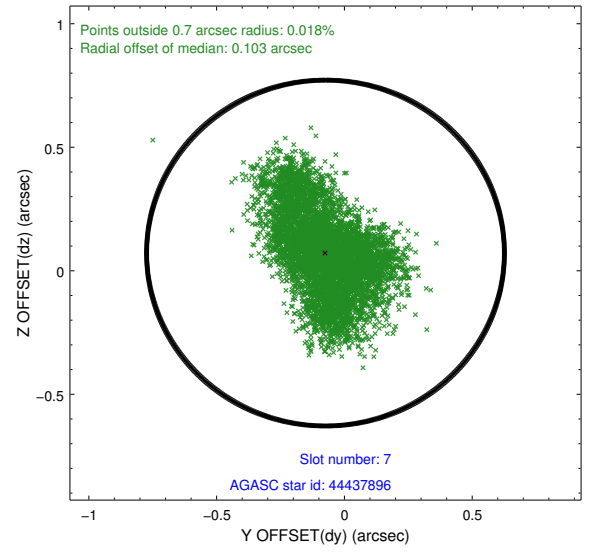
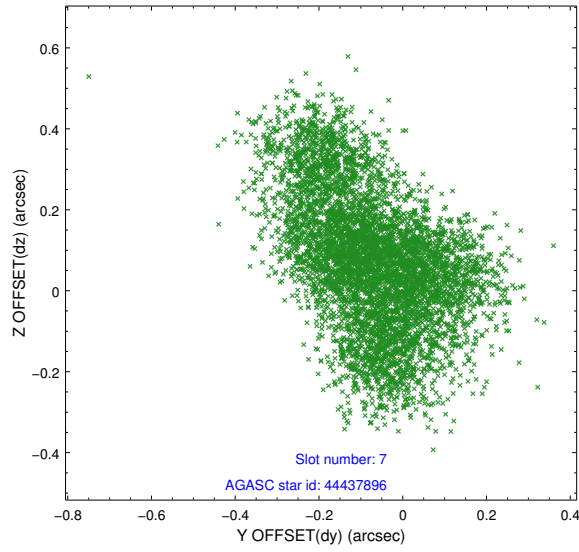
2.4.3 Slot 5



2.4.4 Slot 6

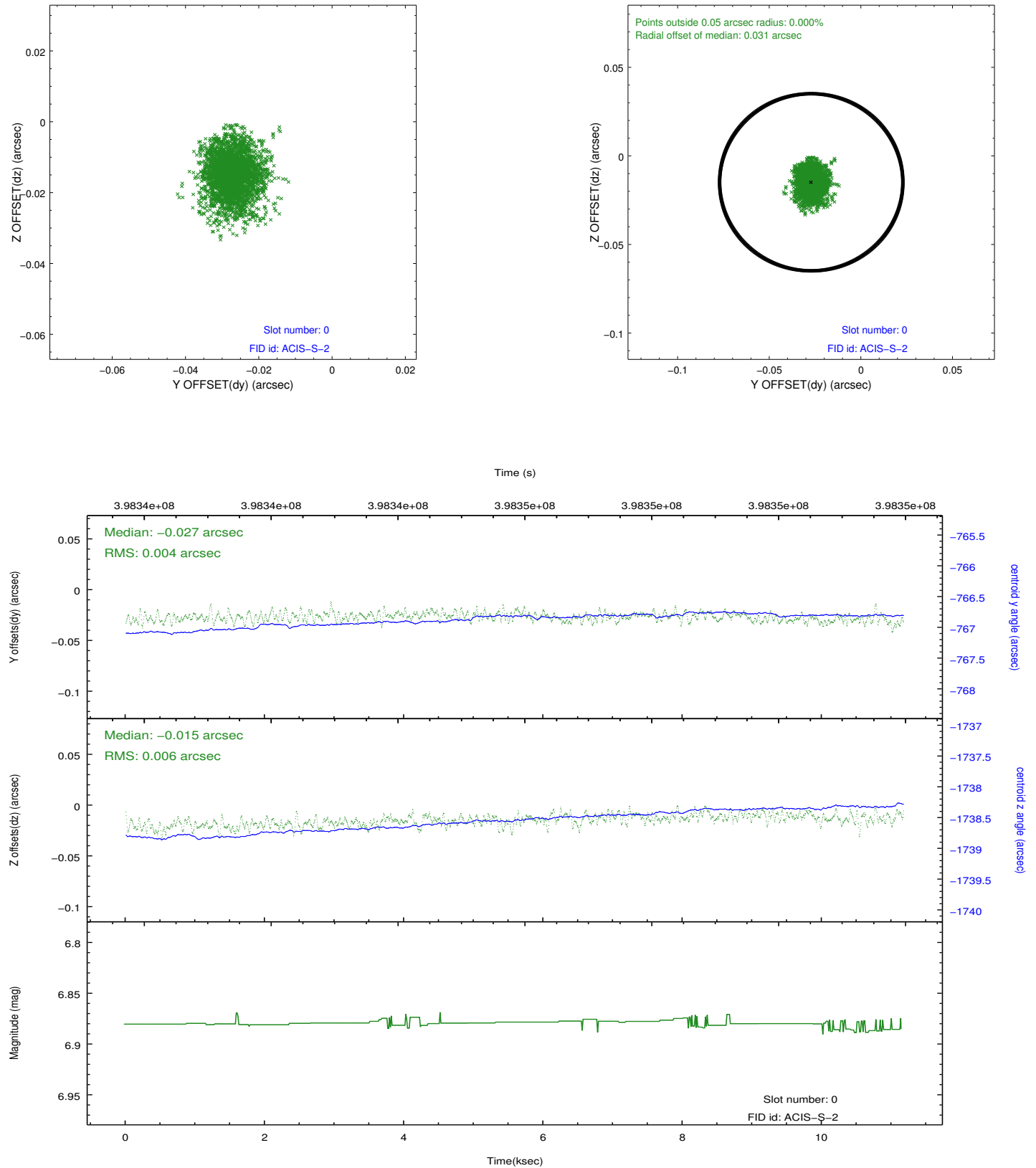


2.4.5 Slot 7

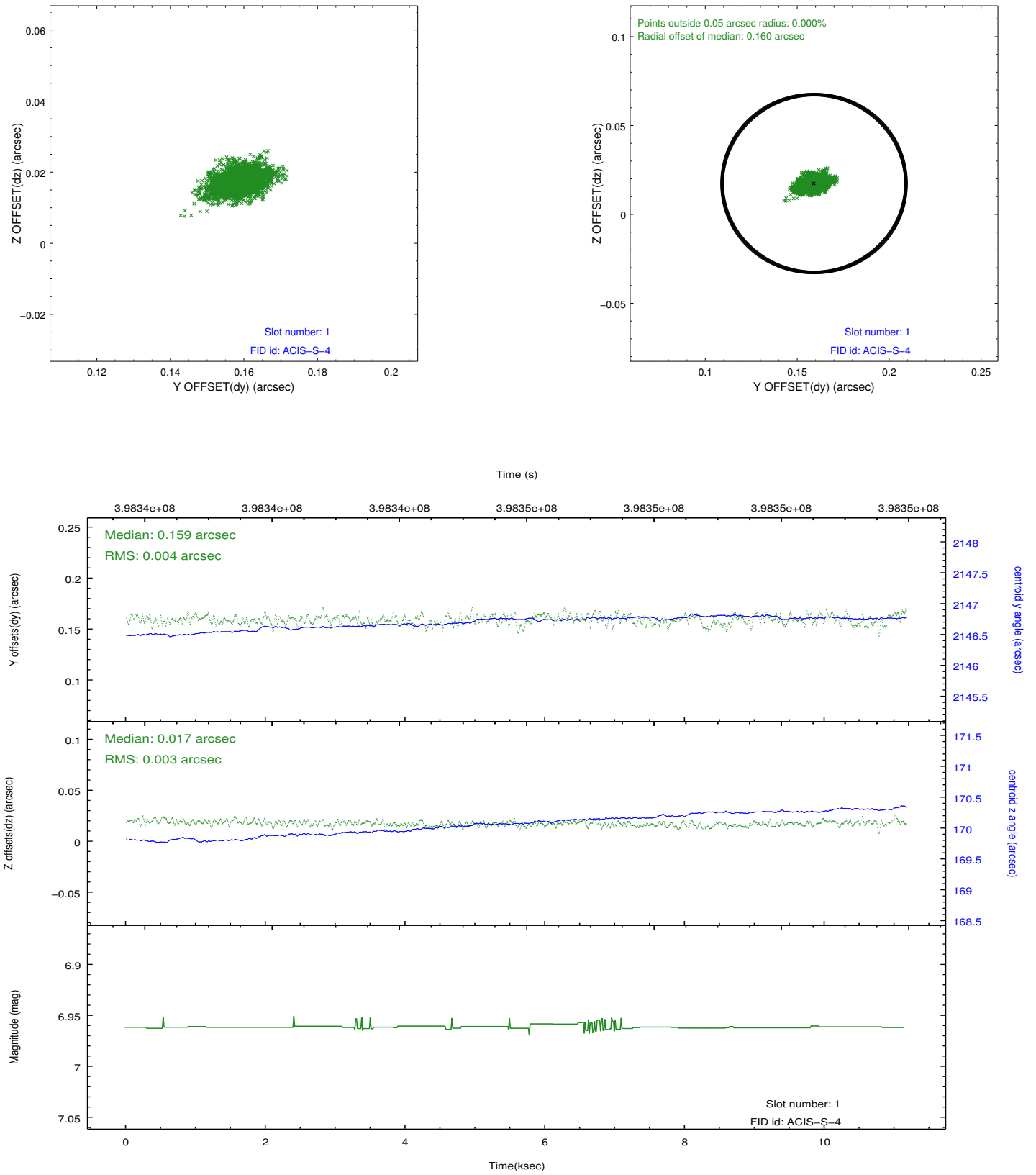


2.5 FID Slots

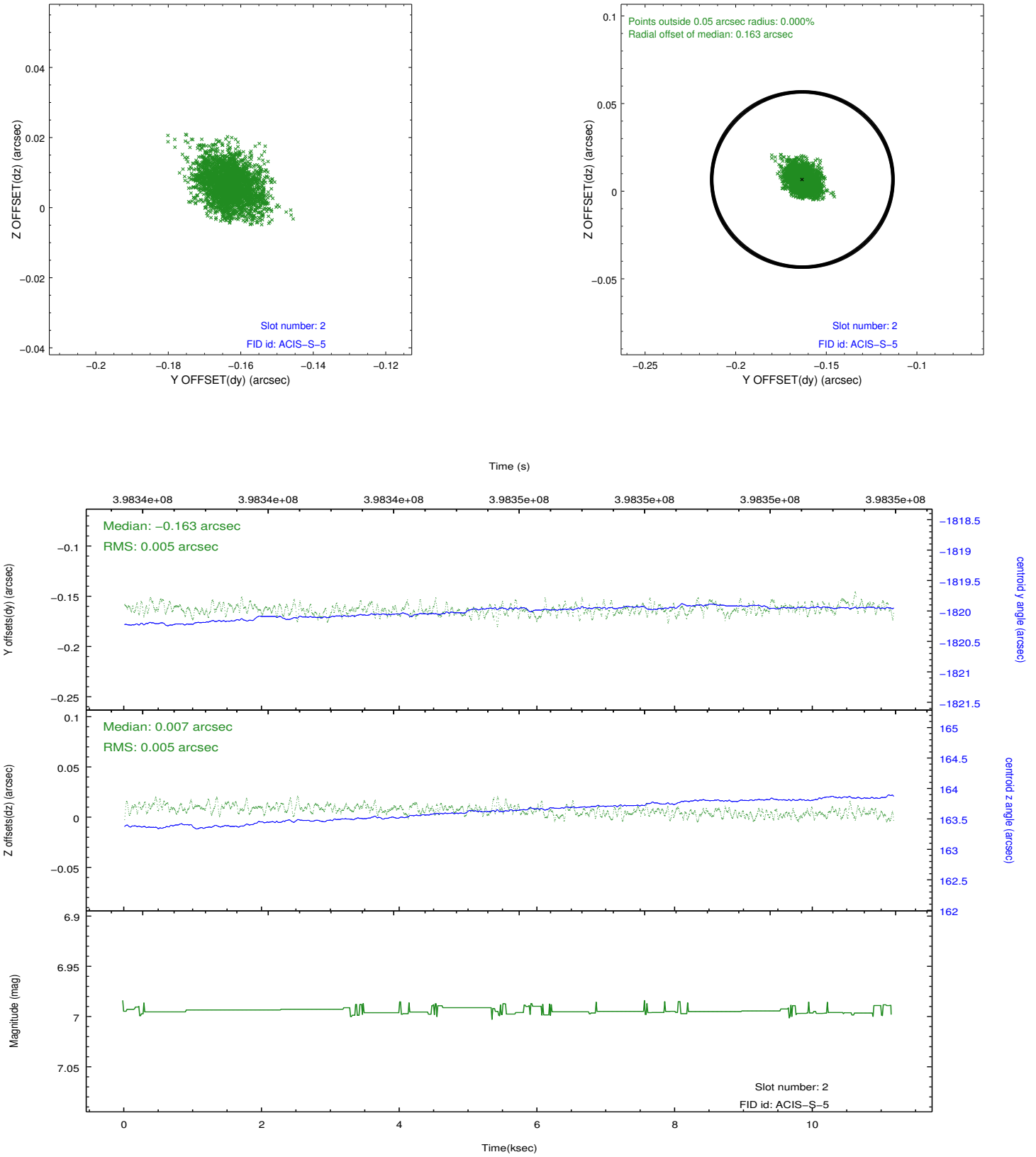
2.5.1 Slot 0



2.5.2 Slot 1



2.5.3 Slot 2



A Summary

A.1 Status

V&V Scientist	Beth Sundheim
V&V Date (YYYY-MM-DD)	2012.07.10
V&V Edition	1
V&V Disposition and Status	OK
V&V Charge Time	11.0451562711

A.2 Comments