

V&V Reference Report

L2 ASCDS Version : 8.4.5

Observation 11330 - L2 Version 2
Chandra X-Ray Center

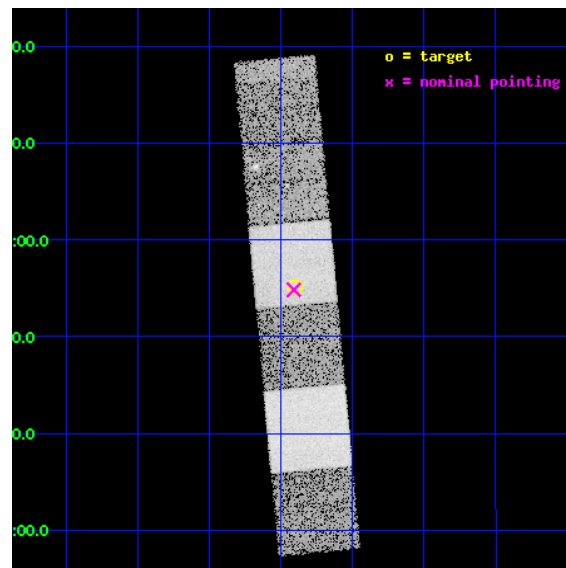
L2 Processing Date : Jul 2 2012

Contents

1	Front	2
2	OBI	3
2.1	OBI	3
2.1.1	Images	3
2.1.2	Bias	3
2.1.3	Parameters	4
2.1.4	Events	4
2.2	Compared Parameters	5
2.3	Aspect	6
2.4	Star Slots	9
2.4.1	Slot 3	9
2.4.2	Slot 4	10
2.4.3	Slot 5	11
2.4.4	Slot 6	12
2.4.5	Slot 7	13
2.5	FID Slots	14
2.5.1	Slot 0	14
2.5.2	Slot 1	15
2.5.3	Slot 2	16
A	Summary	17
A.1	Status	17
A.2	Comments	17

1 Front

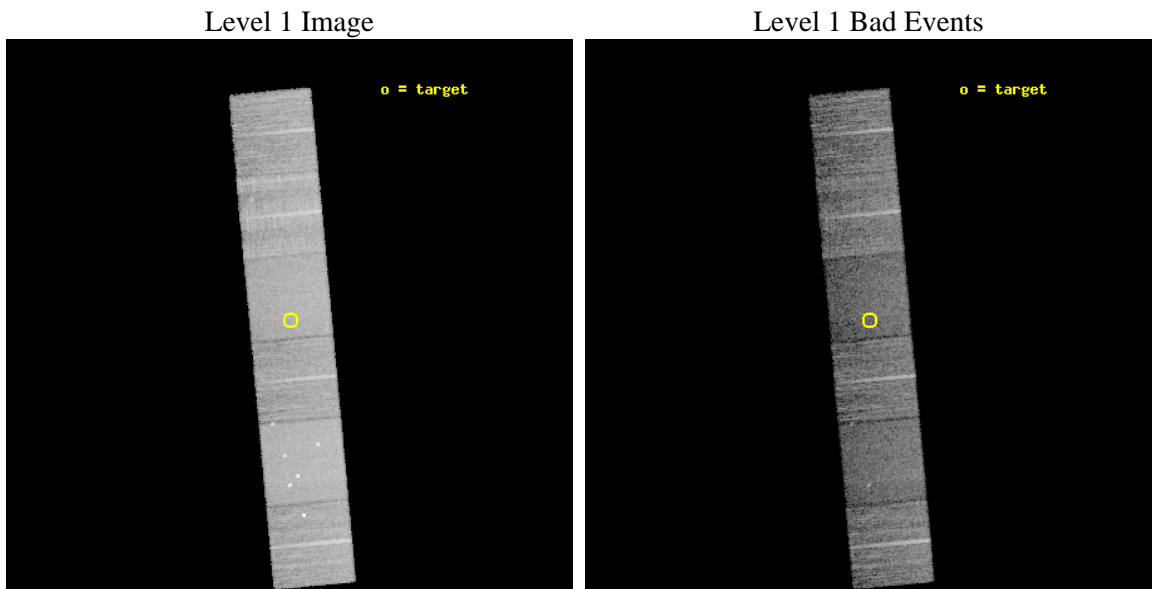
seq_num	600849	Sequence number
obs_id	11330	Observation id
title	Accretion onto nuclear black holes in early type galaxies: comparing field vs. clusters	Proposal title
observer	Elena Gallo	Principal investigator
object	PGC1179083	Source name
dtcycle	0	
cycle	P	events from which exps? Prim/Second/Both
ra_targ	226.1	Observer's specified target RA [deg]
dec_targ	0.91839	Observer's specified target Dec [deg]
ra_nom	226.10211957744	Nominal RA [deg]
dec_nom	0.91404912347463	Nominal Dec [deg]
roll_nom	264.70460930594	Nominal Roll [deg]
revision	2	Processing version of data
ontime	9958.3999629617	Sum of GTIs [s]
livetime	9832.3007064021	Livetime [s]
ontime4	9958.3999629617	Sum of GTIs [s]
ontime5	9958.3999629617	Sum of GTIs [s]
ontime6	9955.1589627862	Sum of GTIs [s]
ontime7	9958.3999629617	Sum of GTIs [s]
ontime8	9951.9180223346	Sum of GTIs [s]
ontime9	9958.3614545465	Sum of GTIs [s]
l2events	121442	Number of level 2 events



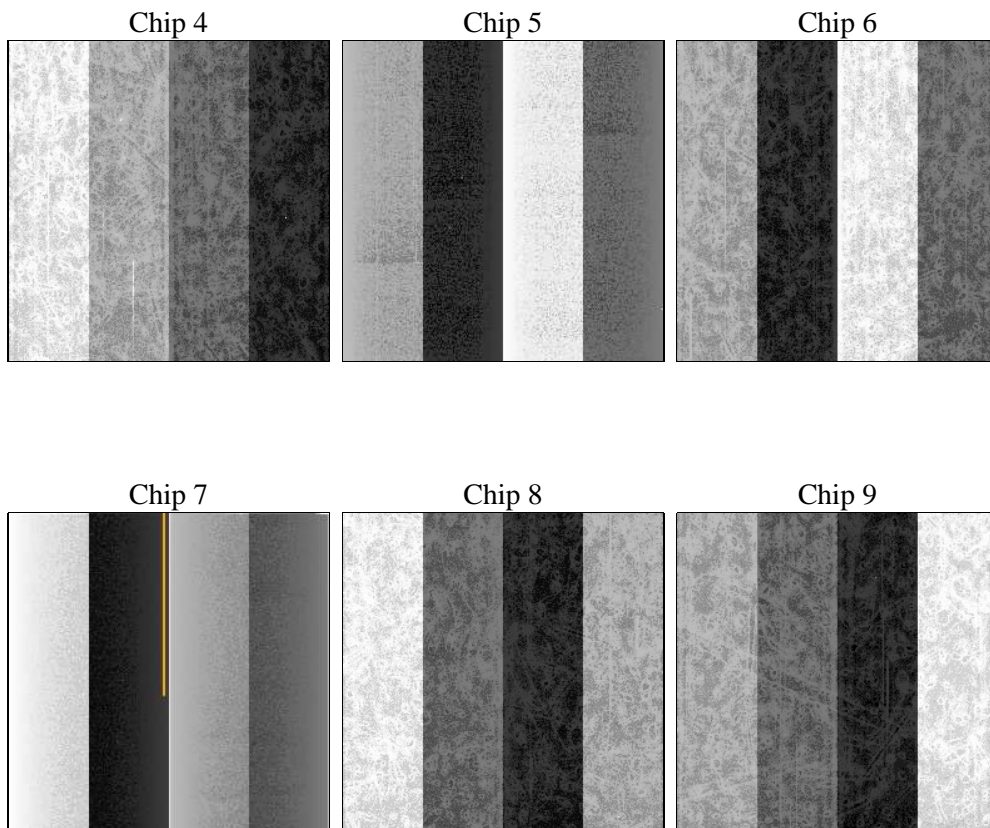
2 OBI

2.1 OBI

2.1.1 Images



2.1.2 Bias



2.1.3 Parameters

obi_num	0	Obi number	sched_exp_time	10200.000000	[s] Scheduled observation exposure time
ascdsver	8.4.5	Processing system revision	ontime	9958.3999629617	Sum of GTIs [s]
caldbver	4.5.0	 	ontime4	9958.3999629617	Sum of GTIs [s]
date	2012-07-02T19:34:26	Date and time of file creation	ontime5	9958.3999629617	Sum of GTIs [s]
revision	2	Processing version of data	ontime6	9955.1589627862	Sum of GTIs [s]
			ontime7	9958.3999629617	Sum of GTIs [s]
			ontime8	9951.9180223346	Sum of GTIs [s]
			ontime9	9958.3614545465	Sum of GTIs [s]
			l1events	531822	Number of level 1 events

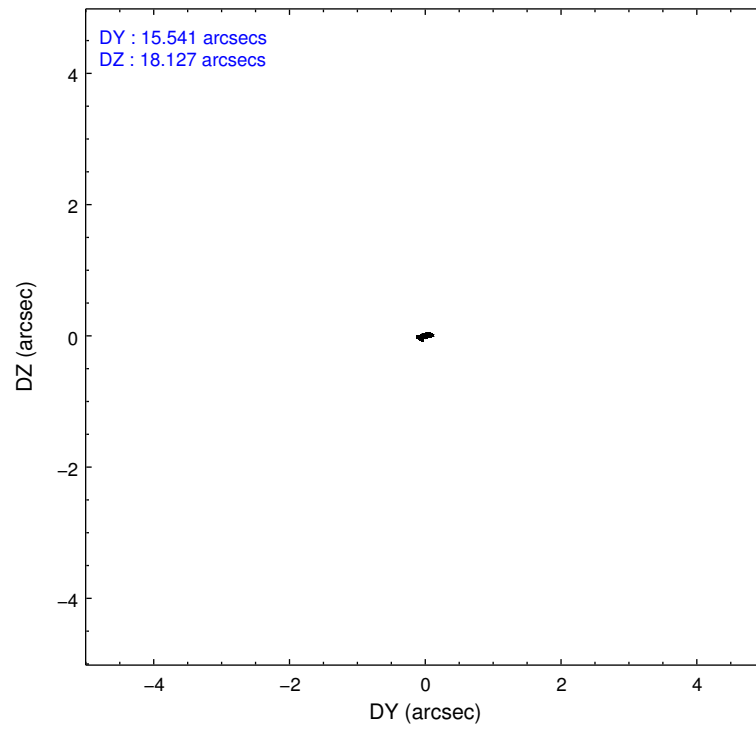
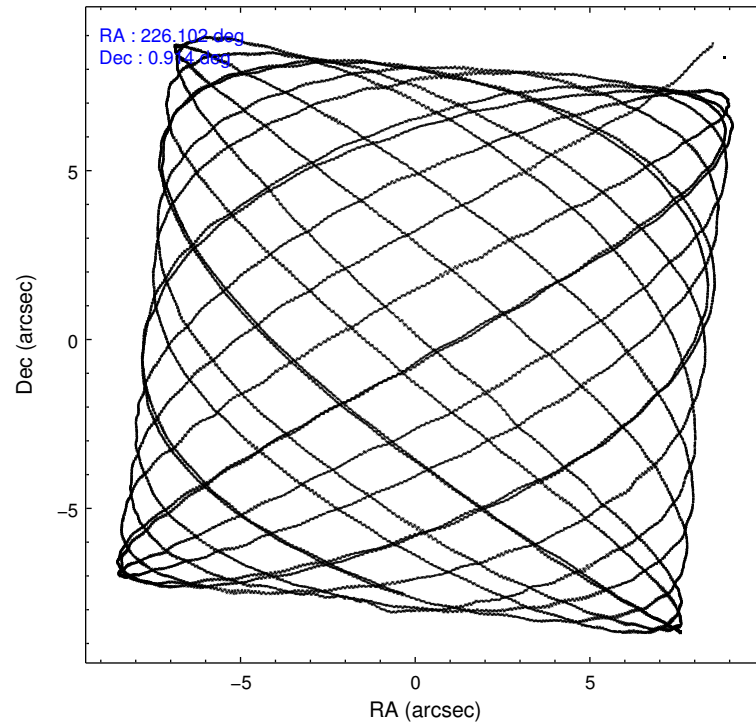
2.1.4 Events

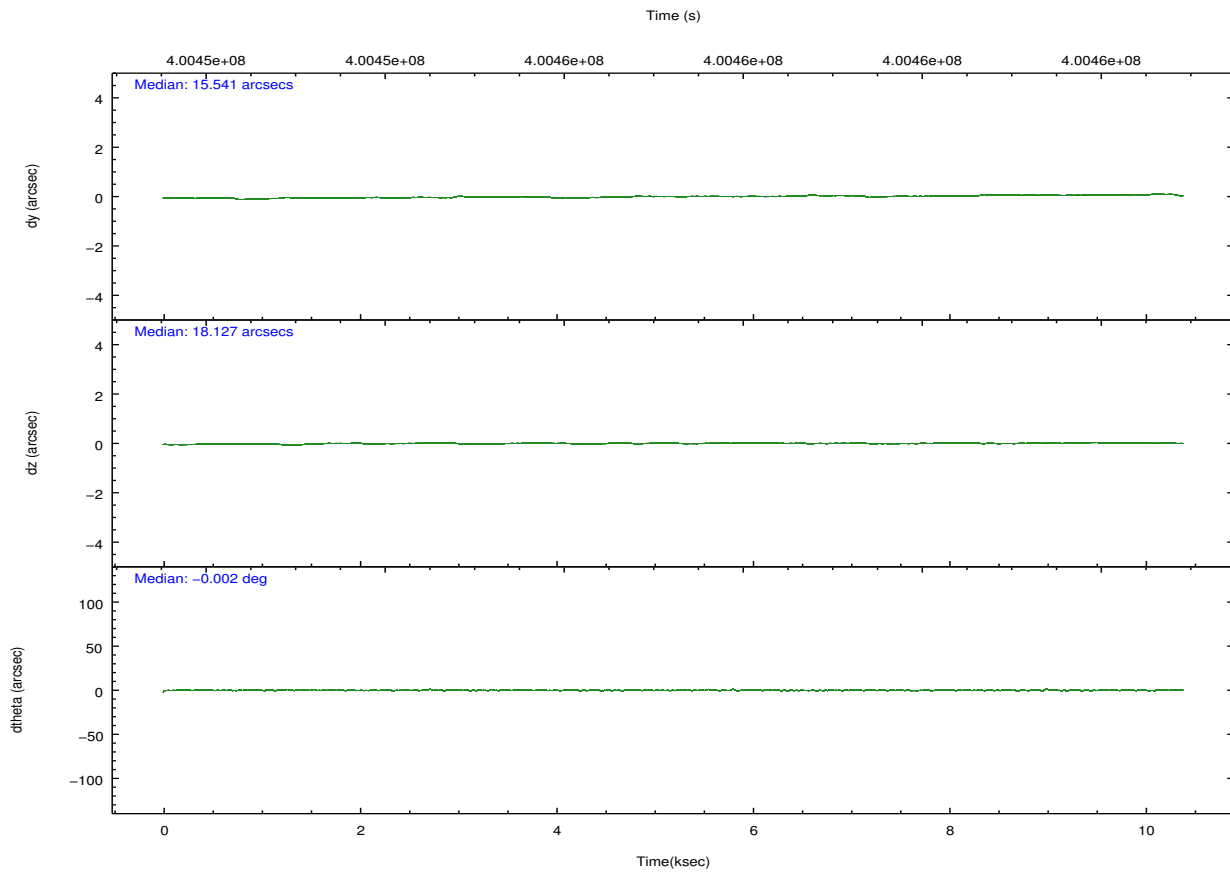
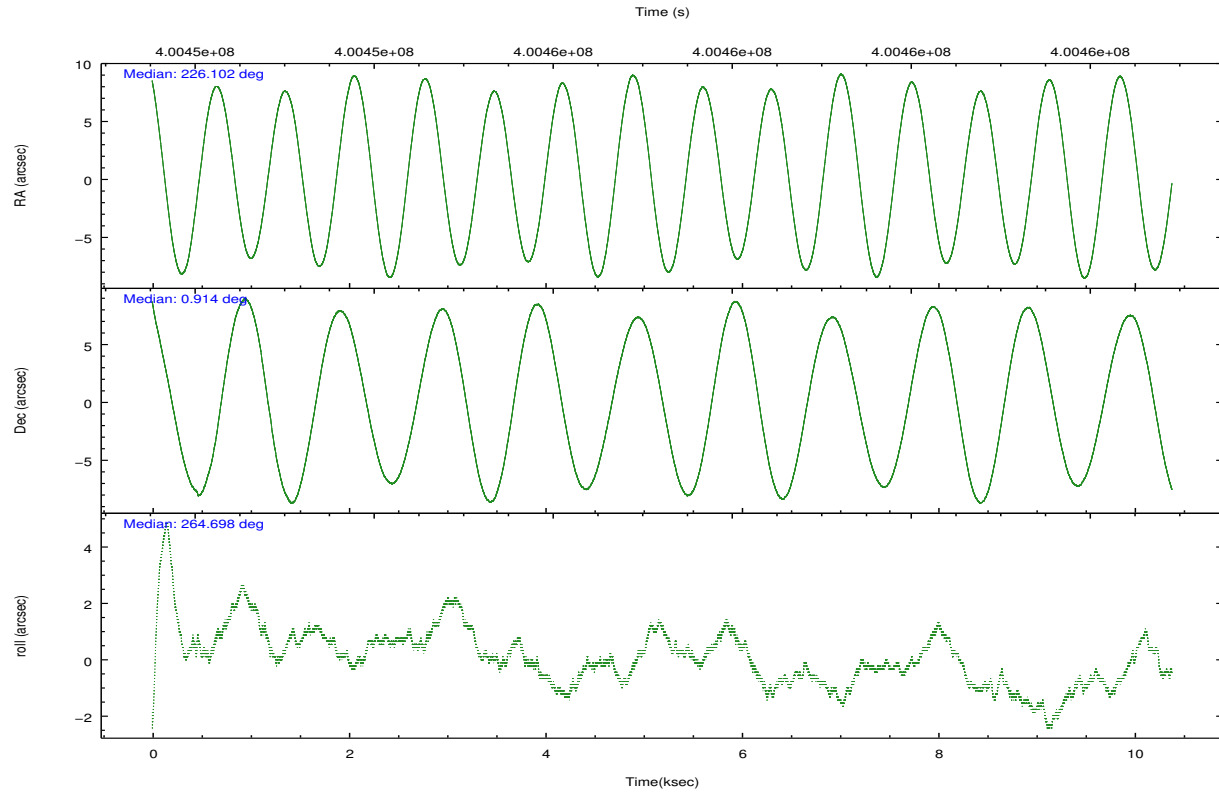
	ccd 4	ccd 5	ccd 6	ccd 7	ccd 8	ccd 9		ccd 4	ccd 5	ccd 6	ccd 7	ccd 8	ccd 9
level 1 events	85656	112351	73046	89763	99006	72000	grade 0 events	5525	7615	2872	3774	7933	3280
rejected events	74785	55300	64884	49030	72902	63222		6%	6%	3%	4%	8%	4%
rejected %	87%	49%	88%	54%	73%	87%	grade 1 events	86	376	43	133	88	41
								0%	0%	0%	0%	0%	0%
							grade 2 events	2113	16378	1822	8351	6050	1878
								2%	14%	2%	9%	6%	2%
							grade 3 events	927	2304	844	3599	2721	918
								1%	2%	1%	4%	2%	1%
							grade 4 events	850	2123	832	3650	2553	892
								0%	1%	1%	4%	2%	1%
							grade 5 events	3318	8566	3313	9412	4802	3651
								3%	7%	4%	10%	4%	5%
							grade 6 events	1458	28647	1795	21367	6852	1812
								1%	25%	2%	23%	6%	2%
							grade 7 events	71379	46342	61525	39477	68007	59528
								83%	41%	84%	43%	68%	82%

2.2 Compared Parameters

Parameter	Planned	Actual	Parameter	Planned	Actual
Instrument	ACIS	ACIS	Obspar format version number	7	7
Detector	ACIS-456789	ACIS-456789	Obspar file type	PREDICTED	ACTUAL
Grating	NONE	NONE	Obspar update status	NONE	UPDATED
Data mode	VFAINT	VFAINT	CCD I0 on	N	N
Observation mode	POINTING	POINTING	CCD I1 on	N	N
[deg] Pointing RA	226.090392	226.1021195774358	CCD I2 on	N	N
[deg] Pointing Dec	0.938730	0.9140491234746326	CCD I3 on	N	N
[deg] Pointing Roll	264.548172	264.7046093059446	CCD S0 on	O1	Y
[mm] SIM focus pos	-0.684267	-0.6828225247311905	CCD S1 on	Y	Y
[mm] SIM defocus	0	0.001444936568705701	CCD S2 on	Y	Y
[mm] SIM translation stage pos	-190.132523	-190.1425803651734	CCD S3 on	Y	Y
[mm] SIM translation stage offset	0	0.01005778216563158	CCD S4 on	Y	Y
[s] Observation start time (MET)	400452205.184000	400451767.34437	CCD S5 on	O2	Y
Observation start date	2010-09-09T20:42:19	2010-09-09T20:36:07	Number of optional ACIS chips dropped	0	0
[s] Observation end time (MET)	400462405.184000	400463003.39495	On-chip summing requested	N	N
Observation end date	2010-09-09T23:32:19	2010-09-09T23:43:23	Subarray requested	NONE	NONE
Read mode	TIMED	TIMED	Alternating exposures requested	N	N
			[s] Primary exposure time	0.000000	3.2

2.3 Aspect



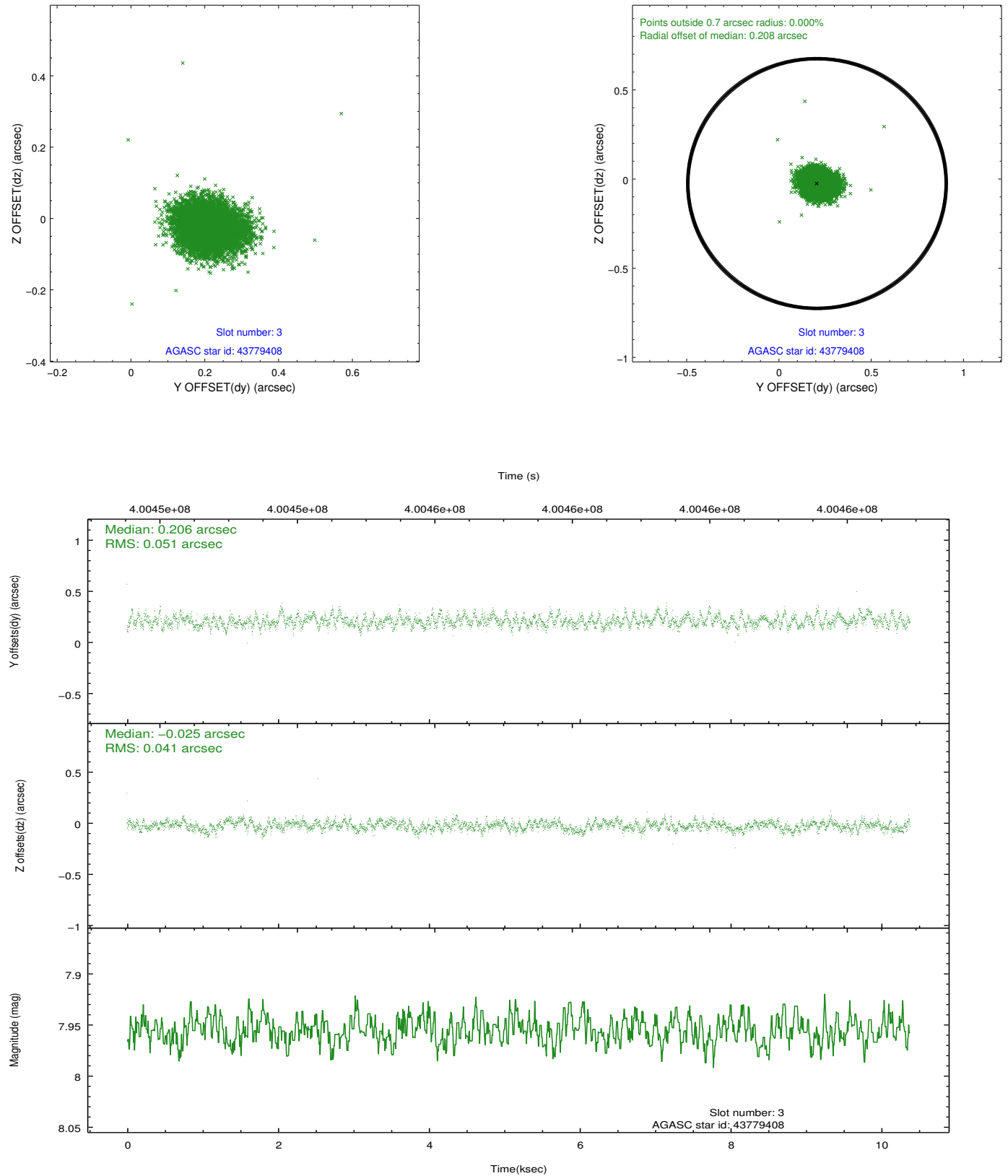


Slot Statistics

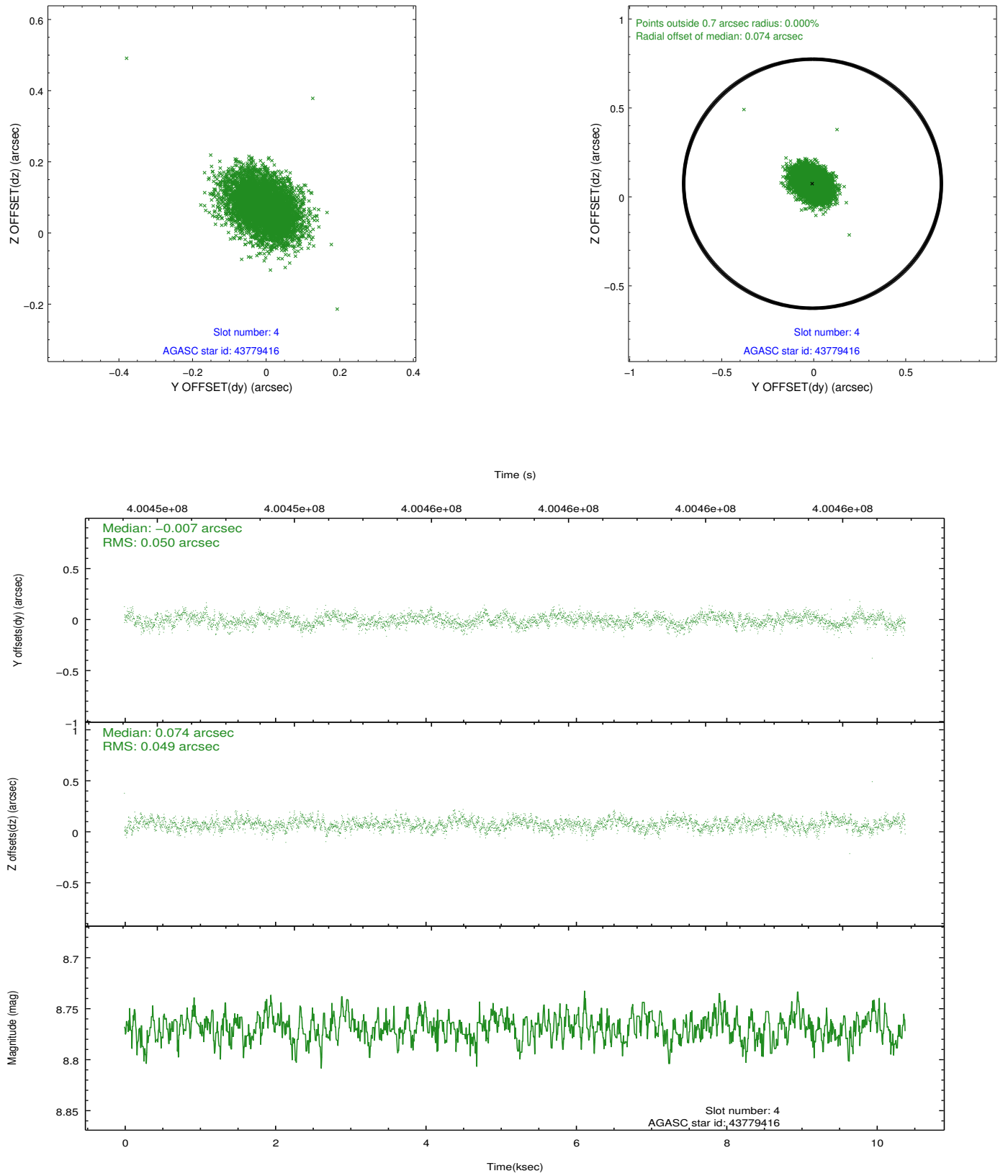
slot	status	id	mag	n_pts	med_dy	med_dz	dr1	dr2	ra	dec	mean_y	mean_z
0	FID	ACIS-S-2	6.87	2532	-0.068	-0.041	0.007	0.011	0.000000	0.000000	-768.64	-1739.55
1	FID	ACIS-S-4	6.96	2533	0.157	0.044	0.006	0.010	0.000000	0.000000	2144.68	168.41
2	FID	ACIS-S-5	6.99	2533	-0.121	0.006	0.006	0.010	0.000000	0.000000	-1820.83	162.73
3	GUIDE	43779408	7.96	5062	0.206	-0.025	0.069	0.109	225.433092	0.714839	1027.61	-2278.62
4	GUIDE	43779416	8.77	5060	-0.007	0.074	0.073	0.121	226.465052	0.567068	1204.37	1469.94
5	GUIDE	43780184	6.73	5066	-0.027	-0.035	0.063	0.102	225.843285	0.889647	261.33	-868.31
6	GUIDE	43783424	7.70	5065	0.008	-0.062	0.060	0.099	226.324547	0.493974	1514.20	991.39
7	GUIDE	43778880	9.01	5024	-0.187	0.050	0.092	0.150	225.720242	1.617889	-2307.66	-1558.47

2.4 Star Slots

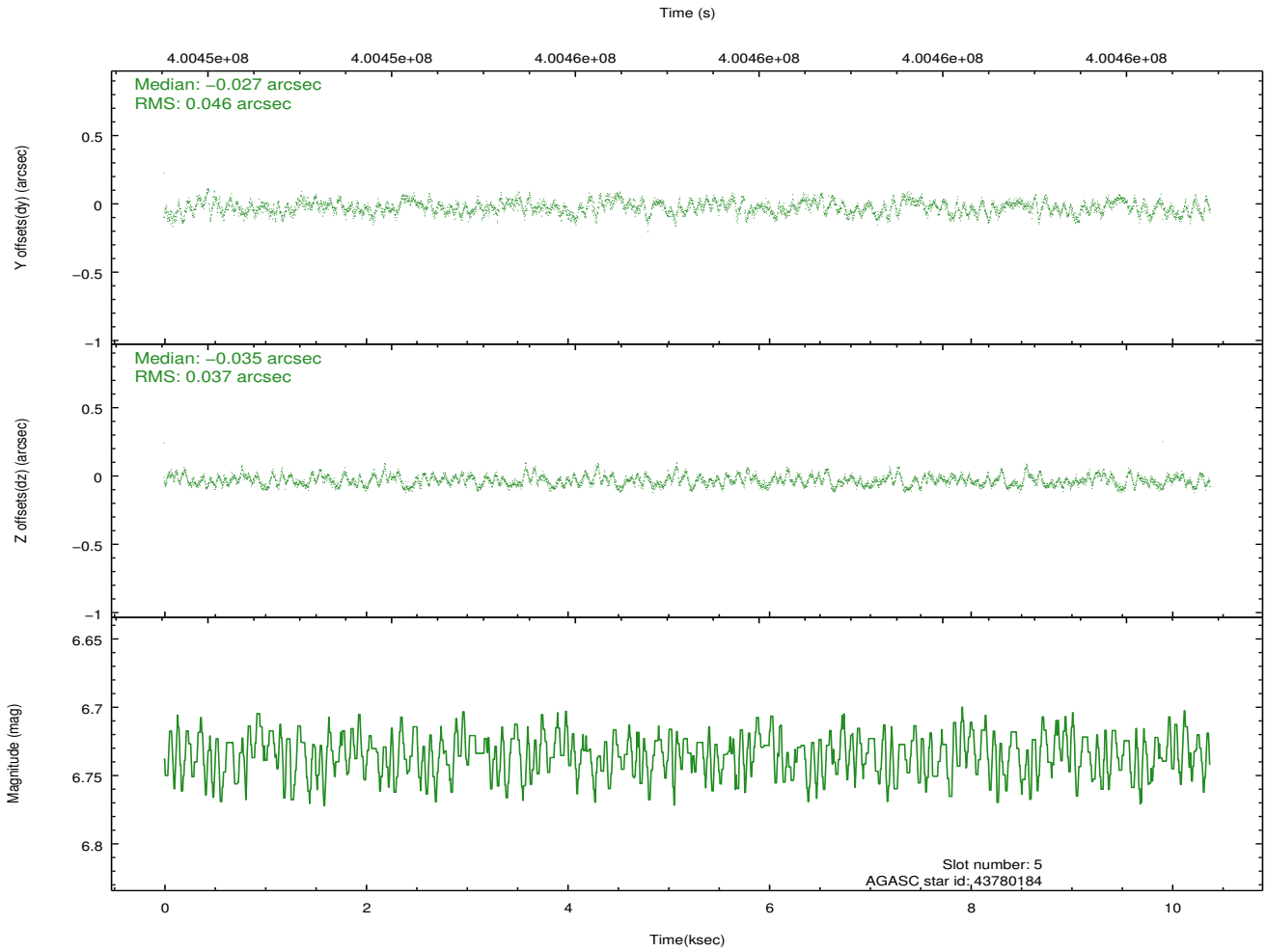
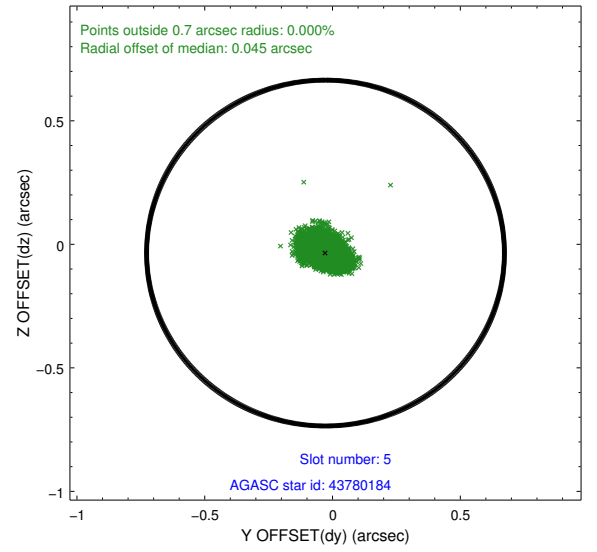
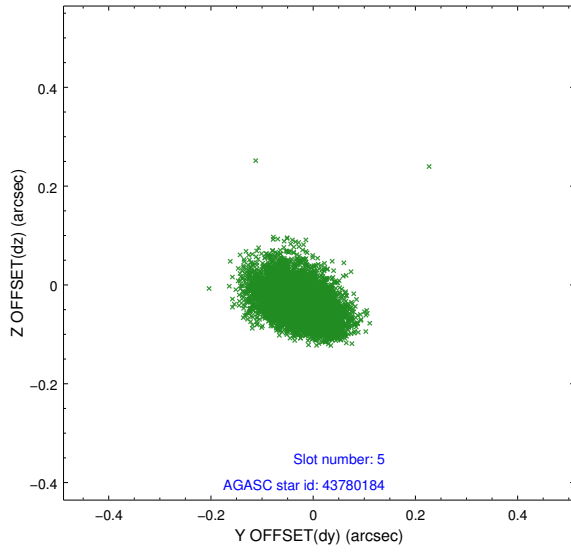
2.4.1 Slot 3



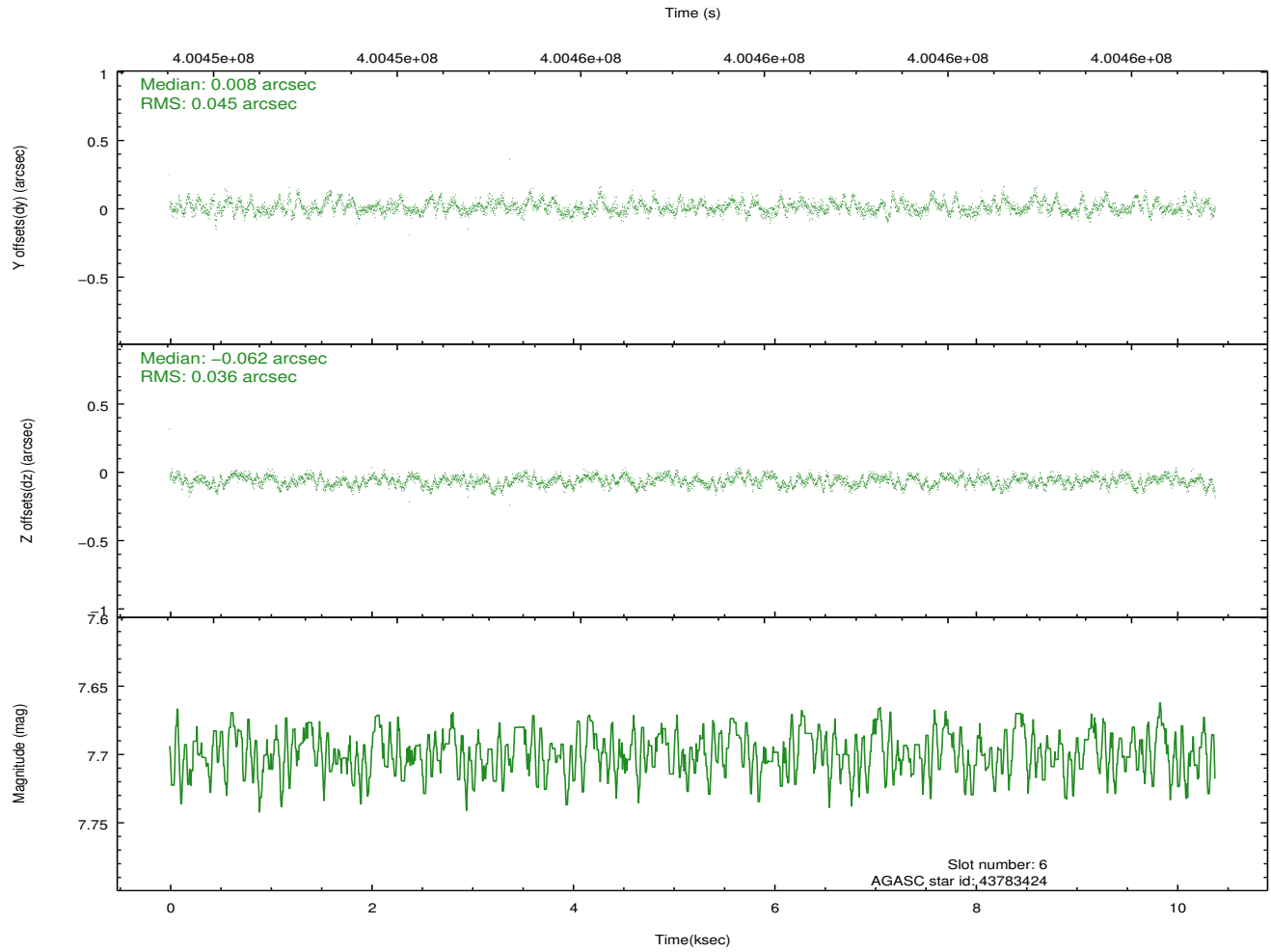
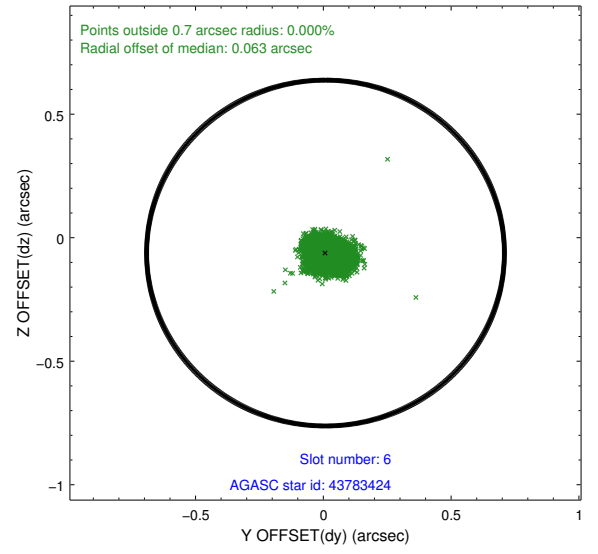
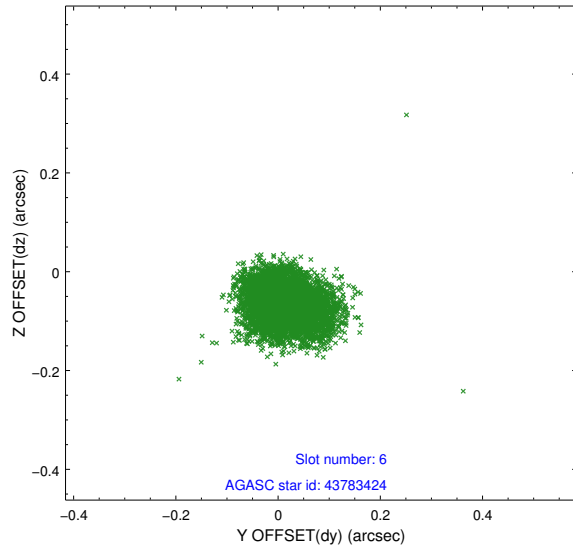
2.4.2 Slot 4



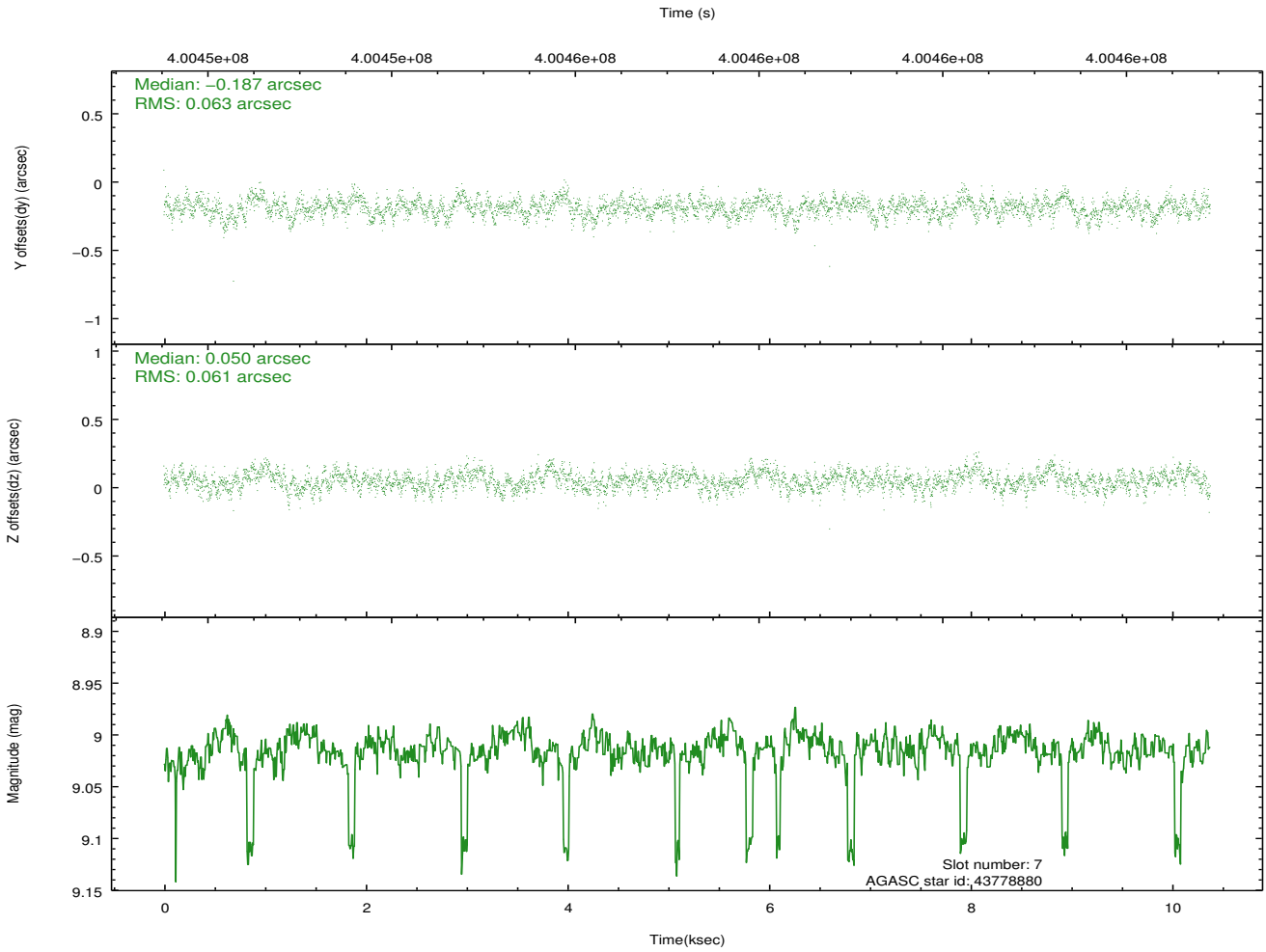
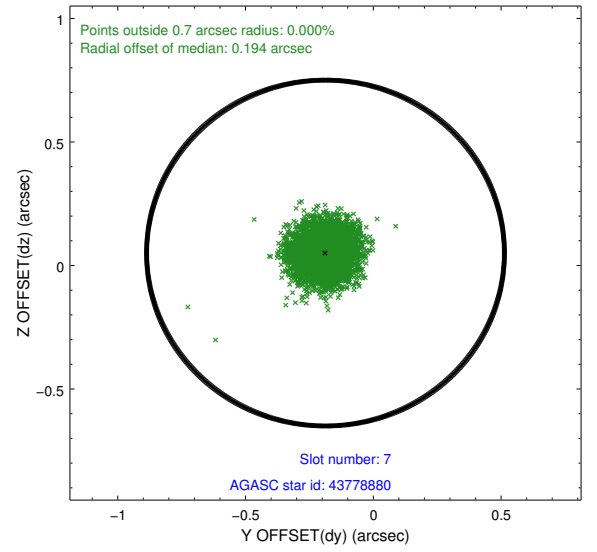
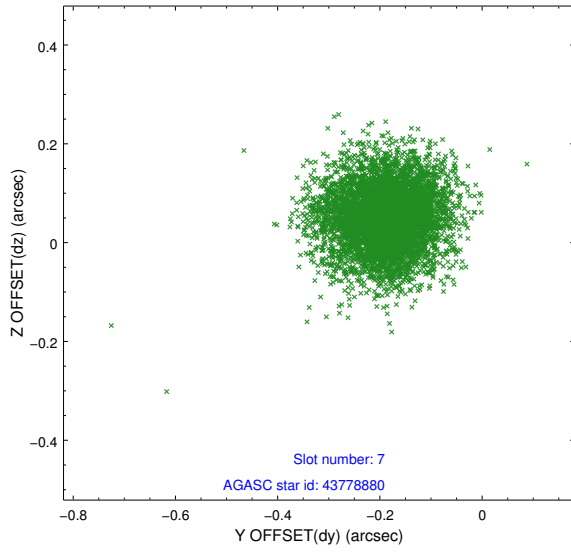
2.4.3 Slot 5



2.4.4 Slot 6

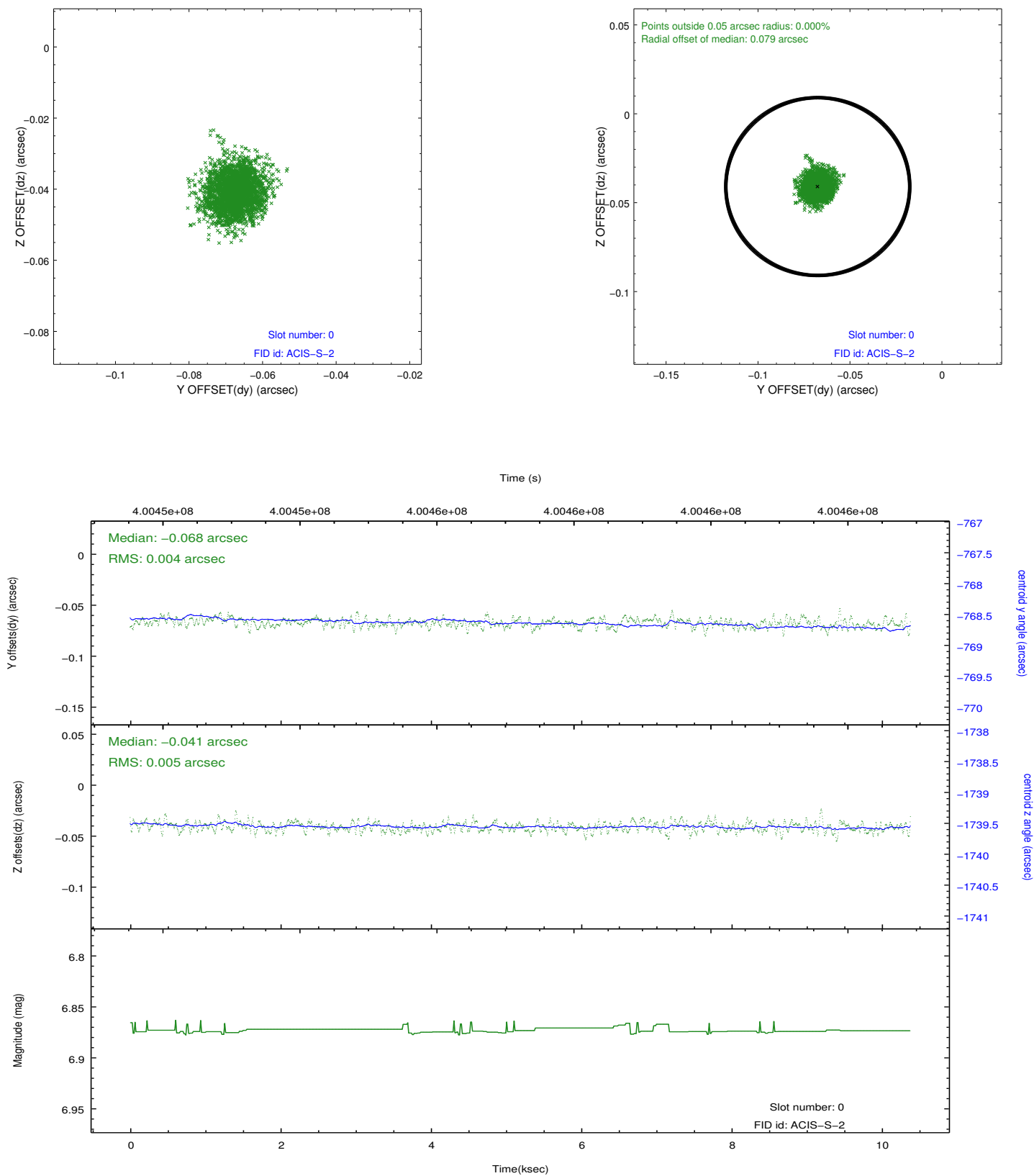


2.4.5 Slot 7

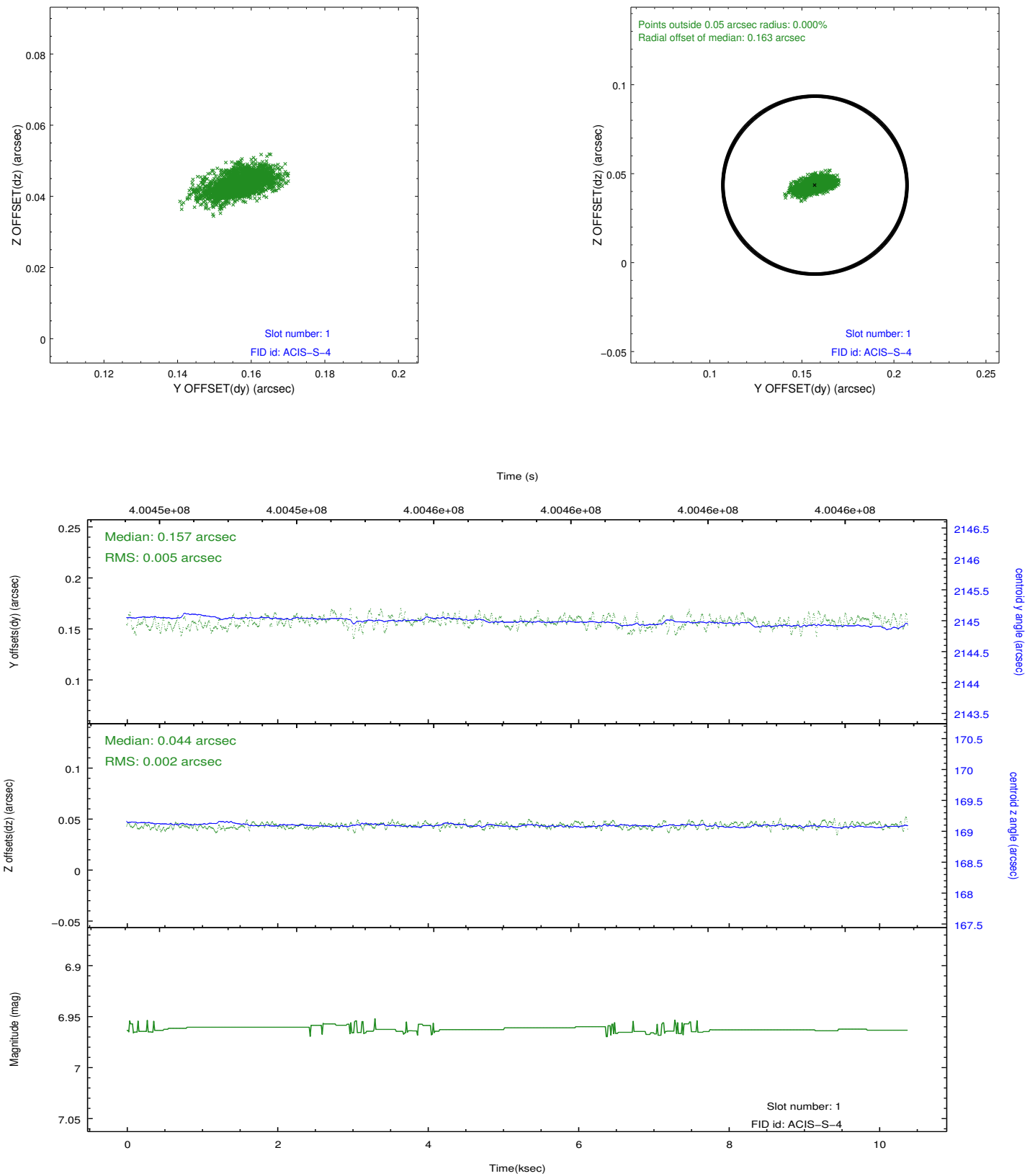


2.5 FID Slots

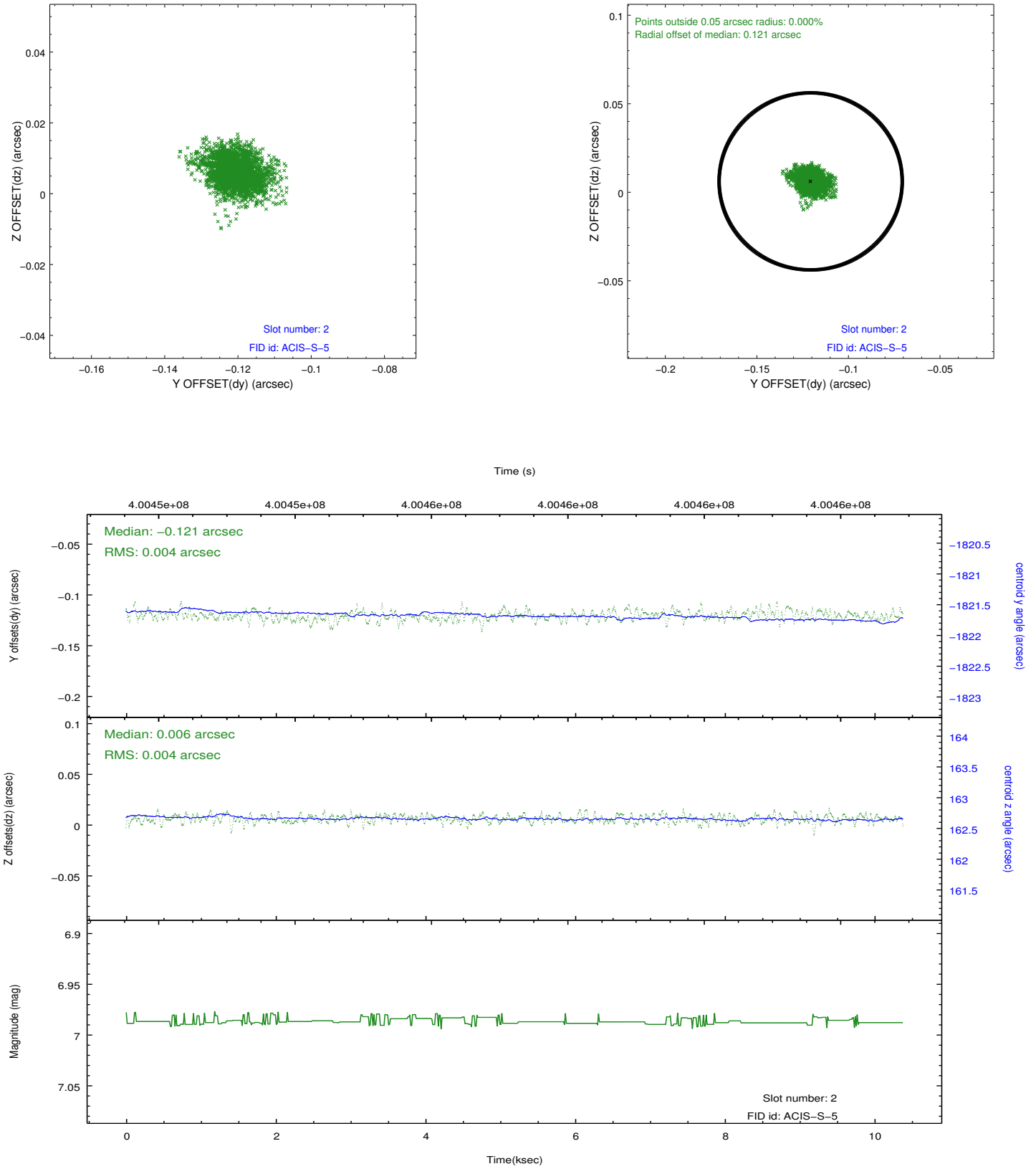
2.5.1 Slot 0



2.5.2 Slot 1



2.5.3 Slot 2



A Summary

A.1 Status

V&V Scientist	Jen Lauer
V&V Date (YYYY-MM-DD)	2012.07.11
V&V Edition	1
V&V Disposition and Status	OK
V&V Charge Time	9.9583999629617

A.2 Comments