

# V&V Reference Report

## L2 ASCDS Version : 8.4.4

Observation 10320 - L2 Version 2  
Chandra X-Ray Center

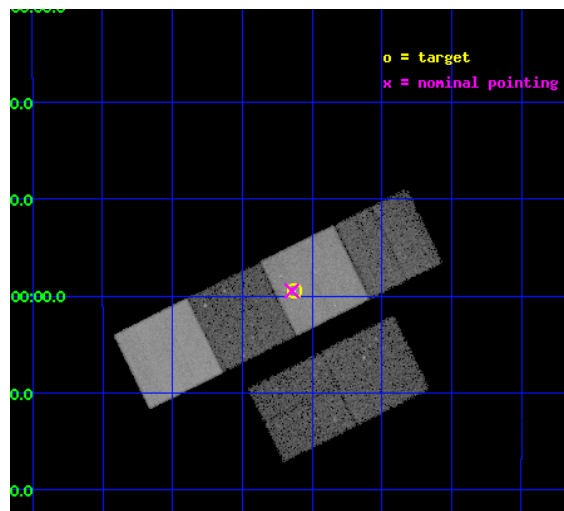
L2 Processing Date : May 24 2012

## Contents

<b>1</b>	<b>Front</b>	<b>2</b>
<b>2</b>	<b>OBI</b>	<b>3</b>
2.1	OBI . . . . .	3
2.1.1	Images . . . . .	3
2.1.2	Bias . . . . .	3
2.1.3	Parameters . . . . .	4
2.1.4	Events . . . . .	4
2.2	Compared Parameters . . . . .	5
2.3	Aspect . . . . .	6
2.4	Star Slots . . . . .	9
2.4.1	Slot 3 . . . . .	9
2.4.2	Slot 4 . . . . .	10
2.4.3	Slot 5 . . . . .	11
2.4.4	Slot 6 . . . . .	12
2.4.5	Slot 7 . . . . .	13
2.5	FID Slots . . . . .	14
2.5.1	Slot 0 . . . . .	14
2.5.2	Slot 1 . . . . .	15
2.5.3	Slot 2 . . . . .	16
<b>A</b>	<b>Summary</b>	<b>17</b>
A.1	Status . . . . .	17
A.2	Comments . . . . .	17

# 1 Front

seq_num	701863	Sequence number
obs_id	10320	Observation id
title	The nature of active nuclei in radio galaxies: observations of the 2Jy sample	Proposal title
observer	Dr Martin Hardcastle	Principal investigator
object	PKS 0213-13	Source name
dtcycle	0	&#160
cycle	P	events from which exps? Prim/Second/Both
ra_targ	33.90625	Observer's specified target RA [deg]
dec_targ	-12.991806	Observer's specified target Dec [deg]
ra_nom	33.91120437331	Nominal RA [deg]
dec_nom	-12.991316696524	Nominal Dec [deg]
roll_nom	333.71477589182	Nominal Roll [deg]
revision	2	Processing version of data
ontime	20147.199925005	Sum of GTIs [s]
livetime	19892.083948368	Livetime [s]
ontime2	20147.199925005	Sum of GTIs [s]
ontime3	20147.199925005	Sum of GTIs [s]
ontime5	20147.199925005	Sum of GTIs [s]
ontime6	20147.199925005	Sum of GTIs [s]
ontime7	20147.199925005	Sum of GTIs [s]
ontime8	20143.958914697	Sum of GTIs [s]
l2events	252681	Number of level 2 events

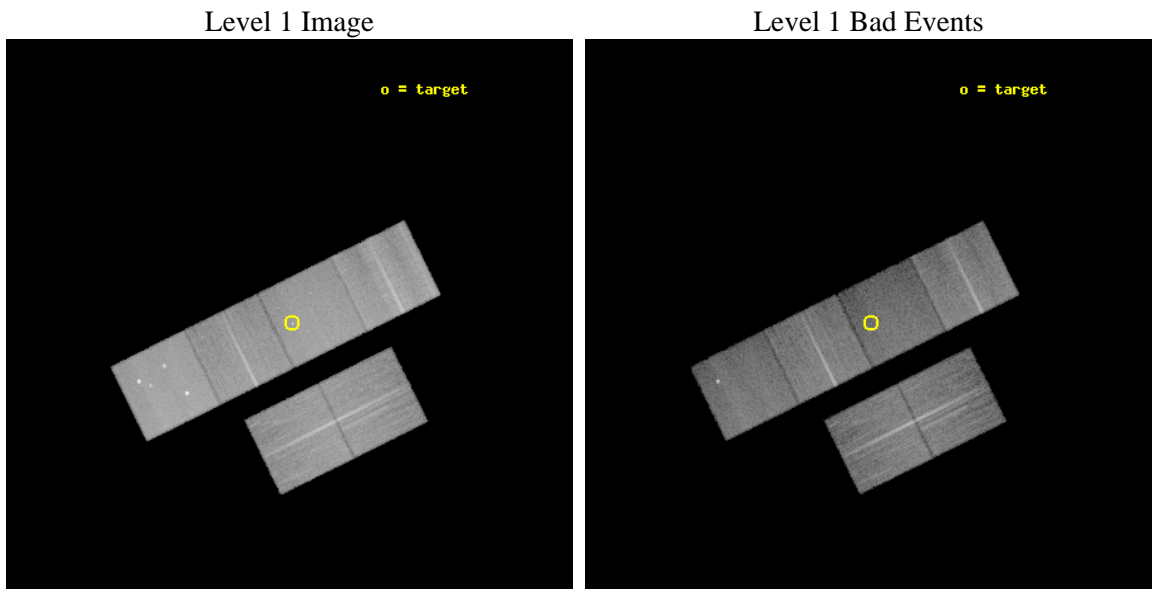




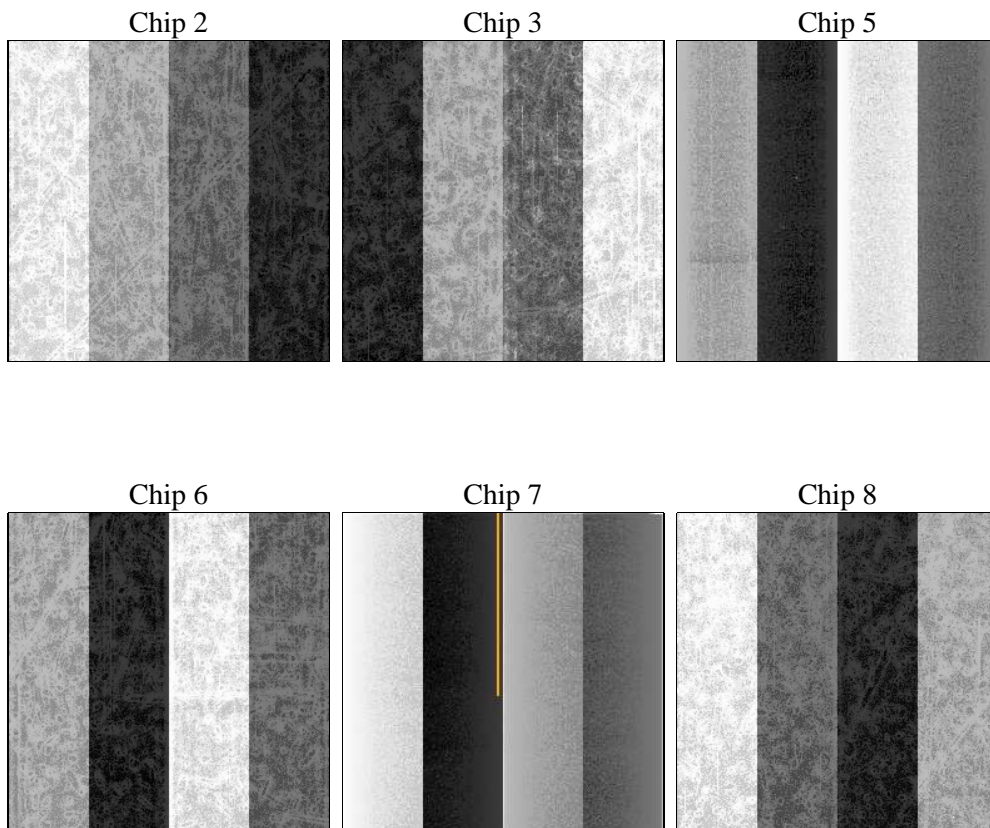
## 2 OBI

### 2.1 OBI

#### 2.1.1 Images



#### 2.1.2 Bias



### 2.1.3 Parameters

obi_num	0	Obi number	sched_exp_time	20000.000000	[s] Scheduled observation exposure time
ascdsver	8.4.4	Processing system revision	ontime	20147.199925005	Sum of GTIs [s]
caldsver	4.4.9	&#160	ontime2	20147.199925005	Sum of GTIs [s]
date	2012-05-24T02:44:57	Date and time of file creation	ontime3	20147.199925005	Sum of GTIs [s]
revision	2	Processing version of data	ontime5	20147.199925005	Sum of GTIs [s]
			ontime6	20147.199925005	Sum of GTIs [s]
			ontime7	20147.199925005	Sum of GTIs [s]
			ontime8	20143.958914697	Sum of GTIs [s]
			l1events	1210835	Number of level 1 events

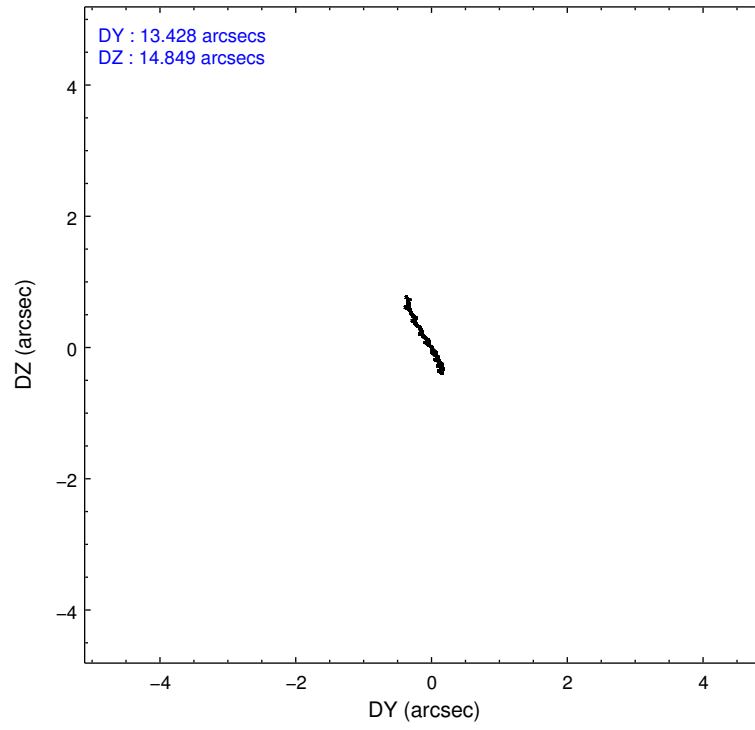
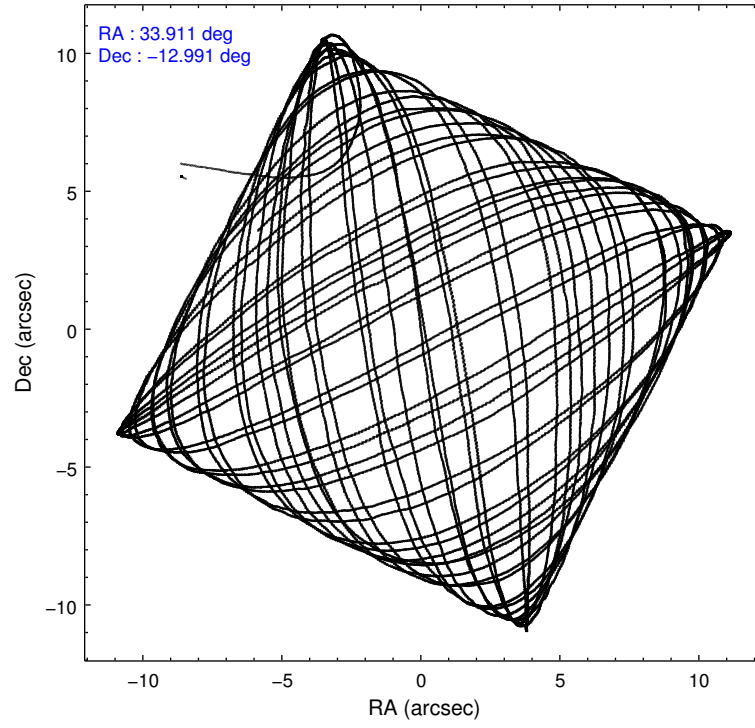
### 2.1.4 Events

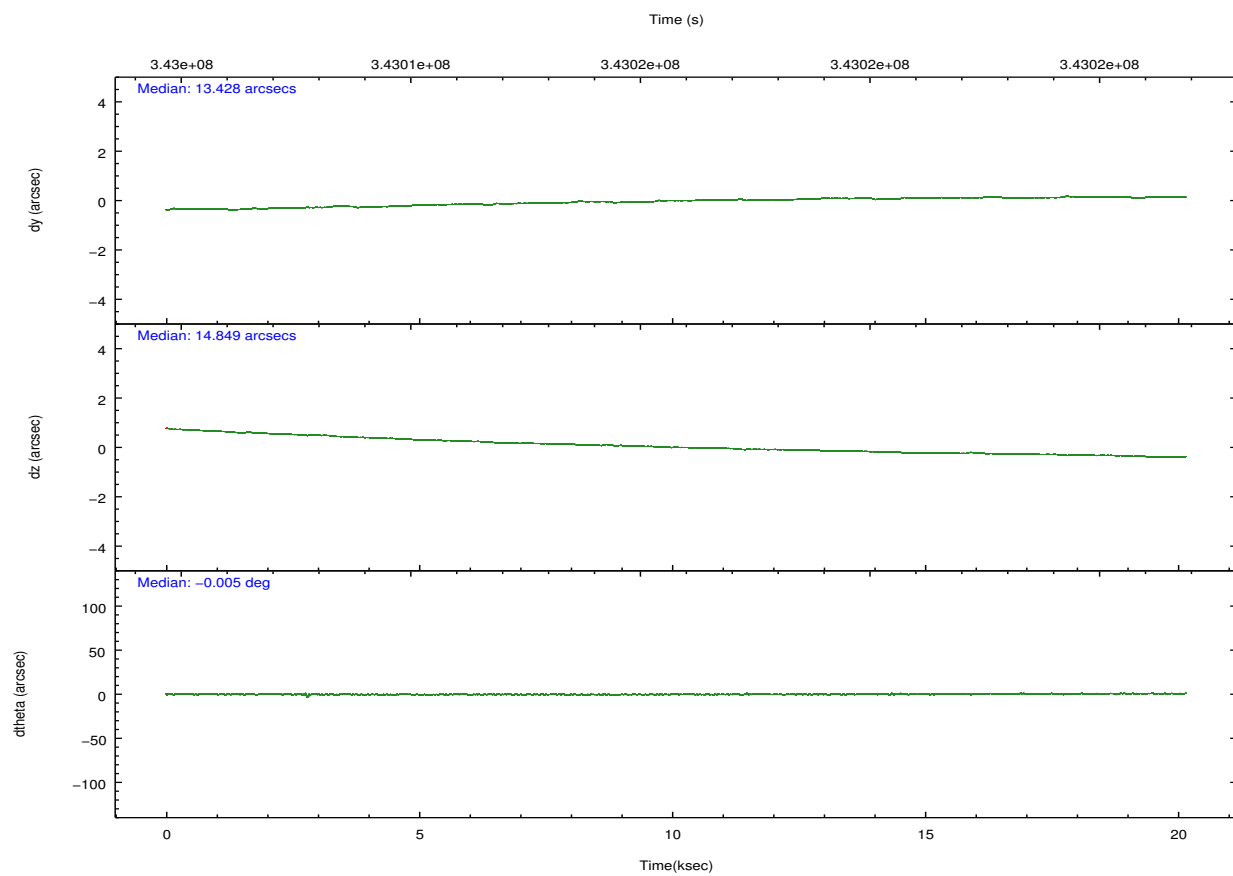
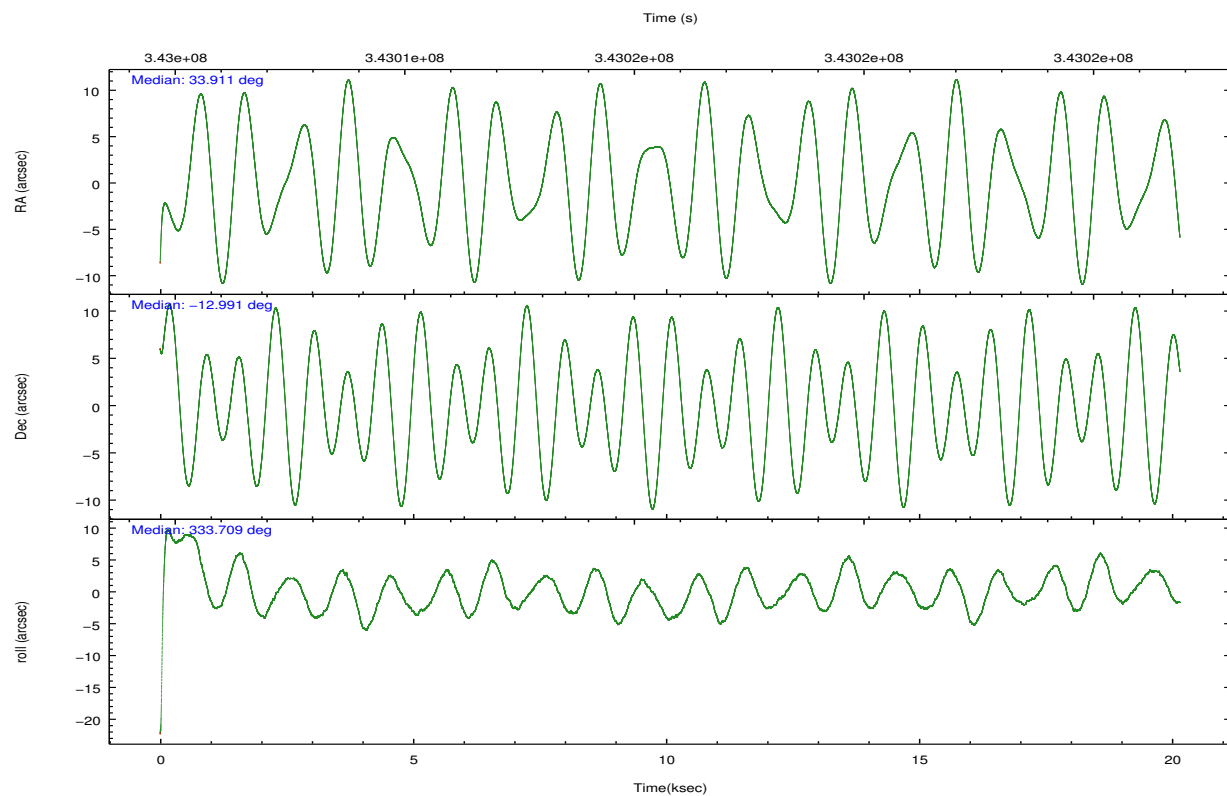
	ccd 2	ccd 3	ccd 5	ccd 6	ccd 7	ccd 8		ccd 2	ccd 3	ccd 5	ccd 6	ccd 7	ccd 8
level 1 events	185583	168875	252692	180899	199423	223363	grade 0 events	6360	6103	16153	6678	9106	15382
rejected events	168960	153196	132452	163287	111944	172514		3%	3%	6%	3%	4%	6%
rejected %	91%	90%	52%	90%	56%	77%	grade 1 events	110	115	480	92	296	192
								0%	0%	0%	0%	0%	0%
							grade 2 events	4298	3570	37731	4161	19014	12888
								2%	2%	14%	2%	9%	5%
							grade 3 events	1851	1855	5421	2012	8554	5847
								0%	1%	2%	1%	4%	2%
							grade 4 events	1904	1877	4929	1884	8428	5362
								1%	1%	1%	1%	4%	2%
							grade 5 events	5947	7114	19851	7145	20767	10582
								3%	4%	7%	3%	10%	4%
							grade 6 events	3315	3223	63412	3979	47875	14715
								1%	1%	25%	2%	24%	6%
							grade 7 events	161798	145018	104715	154948	85383	158395
								87%	85%	41%	85%	42%	70%

## 2.2 Compared Parameters

Parameter	Planned	Actual	Parameter	Planned	Actual
Instrument	ACIS	ACIS	Obspar format version number	7	7
Detector	ACIS-235678	ACIS-235678	Obspar file type	PREDICTED	ACTUAL
Grating	NONE	NONE	Obspar update status	NONE	UPDATED
Data mode	VFAINT	VFAINT	CCD I0 on	N	N
Observation mode	POINTING	POINTING	CCD I1 on	N	N
[deg] Pointing RA	33.883235	33.91120437331017	CCD I2 on	O1	Y
[deg] Pointing Dec	-12.993491	-12.99131669652391	CCD I3 on	O2	Y
[deg] Pointing Roll	333.551879	333.7147758918234	CCD S0 on	N	N
[mm] SIM focus pos	-0.684267	-0.6828225247311905	CCD S1 on	O3	Y
[mm] SIM defocus	0	0.001444936568705701	CCD S2 on	Y	Y
[mm] SIM translation stage pos	-190.132523	-190.1400660498719	CCD S3 on	Y	Y
[mm] SIM translation stage offset	0	0.00754346686406393	CCD S4 on	Y	Y
[s] Observation start time (MET)	343005840.184000	343004090.68008	CCD S5 on	N	N
Observation start date	2008-11-13T23:22:55	2008-11-13T22:54:50	Number of optional ACIS chips dropped	0	0
[s] Observation end time (MET)	343025840.184000	343026261.43117	On-chip summing requested	N	N
Observation end date	2008-11-14T04:56:15	2008-11-14T05:04:21	Subarray requested	NONE	NONE
Read mode	TIMED	TIMED	Alternating exposures requested	N	N
			[s] Primary exposure time	0.000000	3.2

## 2.3 Aspect



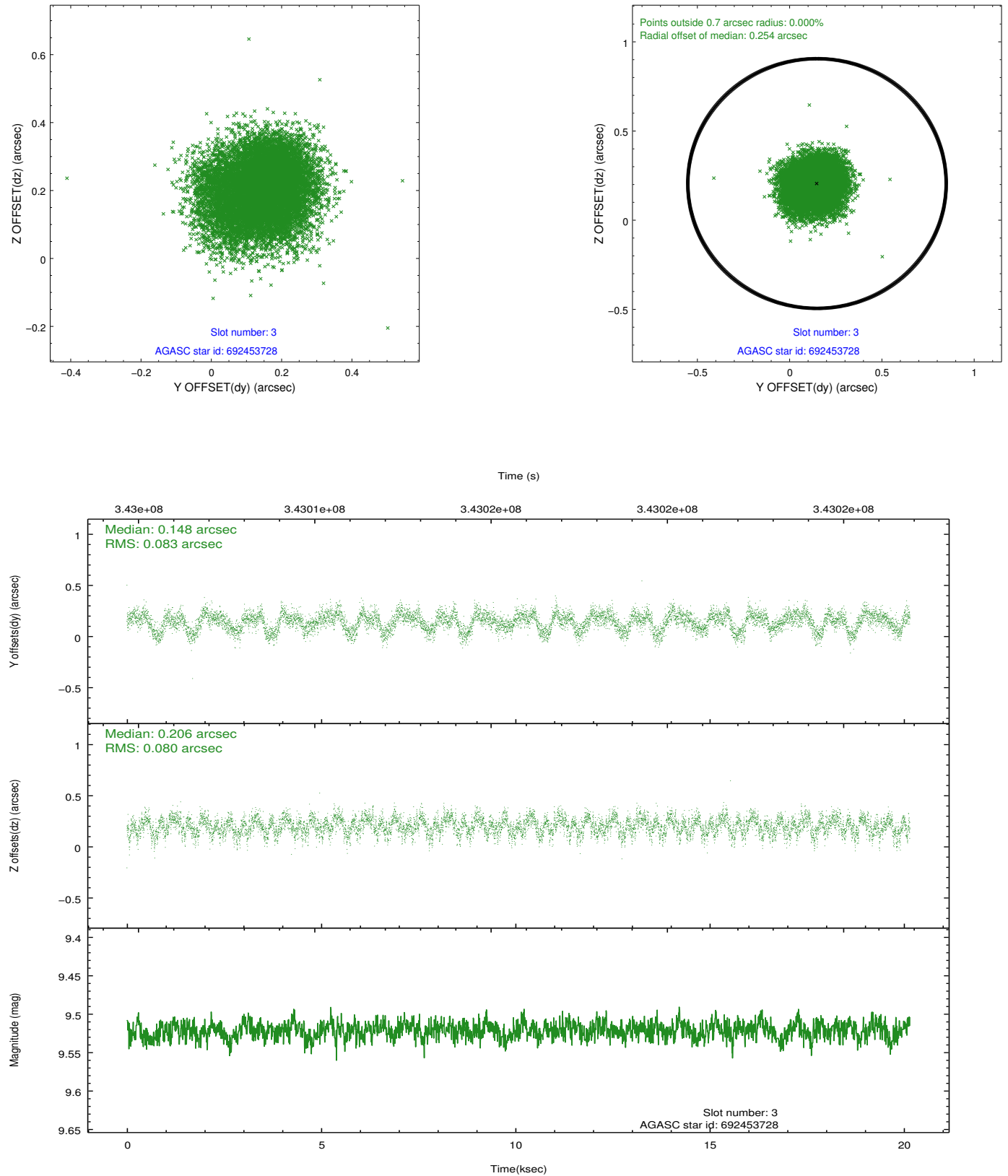


### Slot Statistics

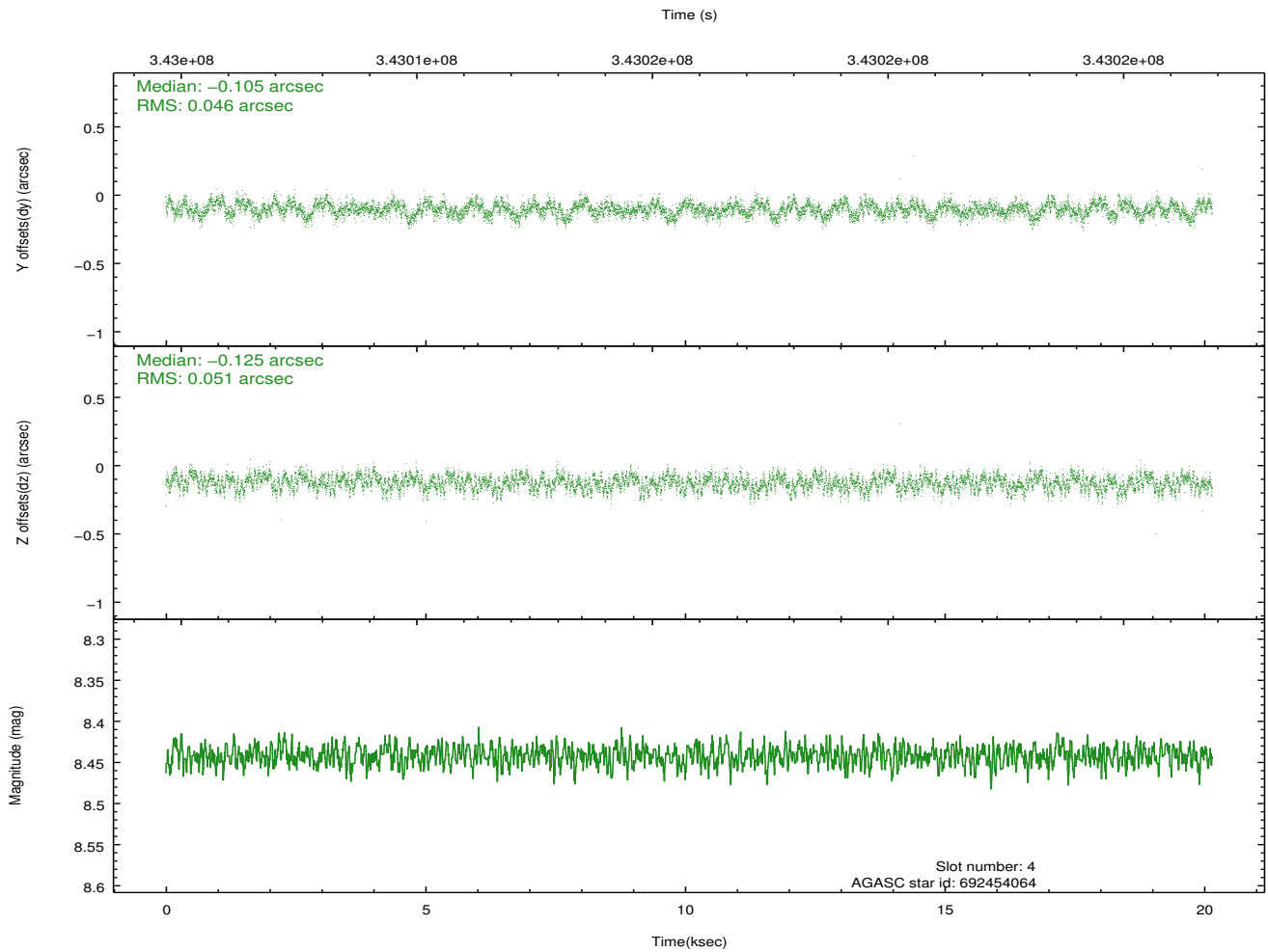
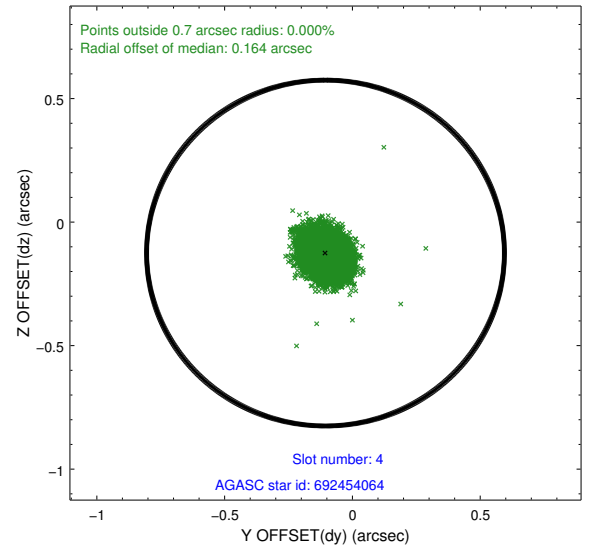
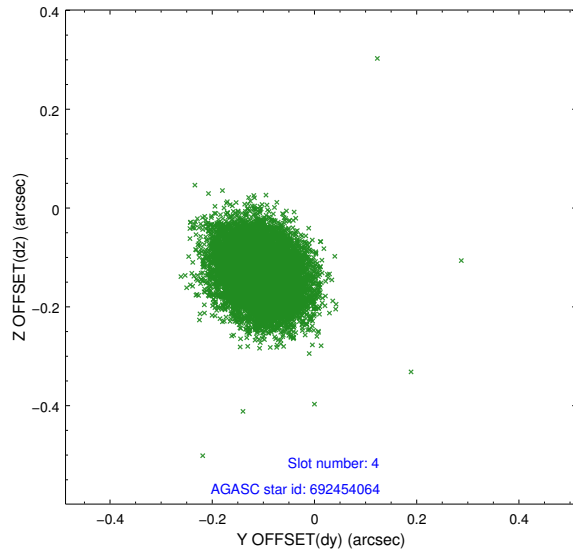
slot	status	id	mag	n_pts	med_dy	med_dz	dr1	dr2	ra	dec	mean_y	mean_z
0	FID	ACIS-S-2	6.90	4916	-0.051	-0.020	0.008	0.014	0.000000	0.000000	-766.32	-1736.32
1	FID	ACIS-S-4	6.98	4917	0.171	0.030	0.007	0.014	0.000000	0.000000	2147.06	172.06
2	FID	ACIS-S-5	7.01	4917	-0.152	-0.001	0.008	0.014	0.000000	0.000000	-1819.06	165.85
3	GUIDE	692453728	9.52	9815	0.148	0.206	0.123	0.195	33.647787	-12.912823	-868.42	-108.21
4	GUIDE	692454064	8.44	9831	-0.105	-0.125	0.073	0.114	34.387220	-12.687626	1095.28	1772.51
5	GUIDE	692456192	9.31	9825	-0.041	0.039	0.165	0.259	33.792128	-12.361976	-1299.21	1892.39
6	GUIDE	692460936	9.29	9822	0.075	-0.003	0.097	0.153	33.723829	-13.081254	-359.31	-531.72
7	GUIDE	692589016	8.79	9820	-0.066	-0.091	0.087	0.137	34.547627	-12.635152	1516.53	2191.93

## 2.4 Star Slots

### 2.4.1 Slot 3

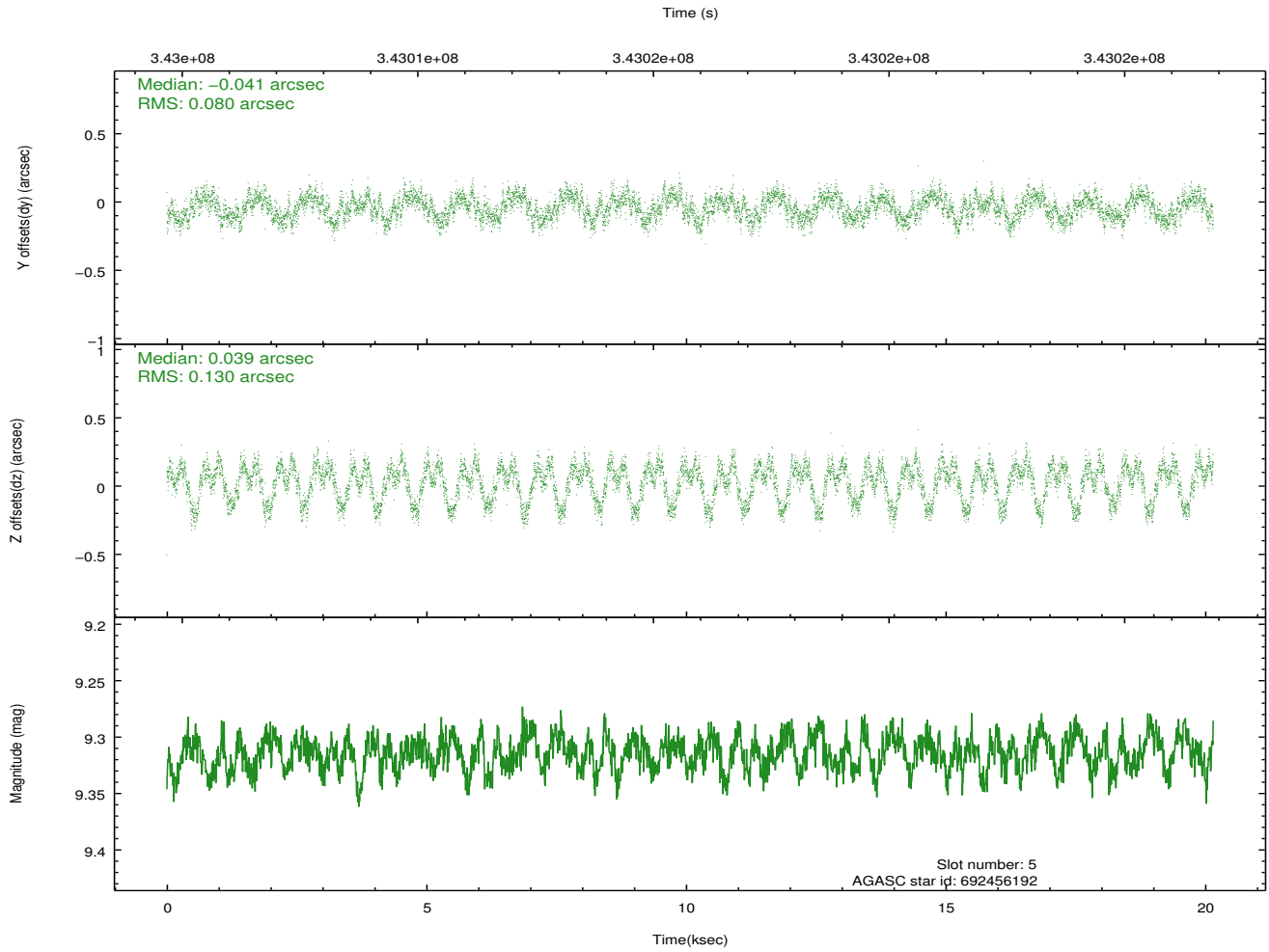
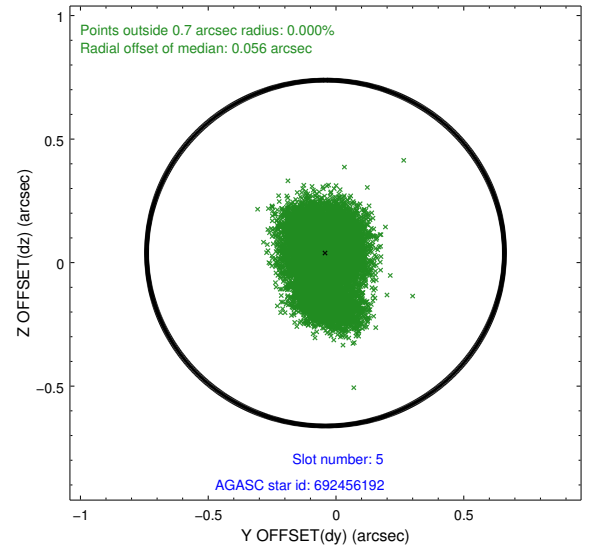
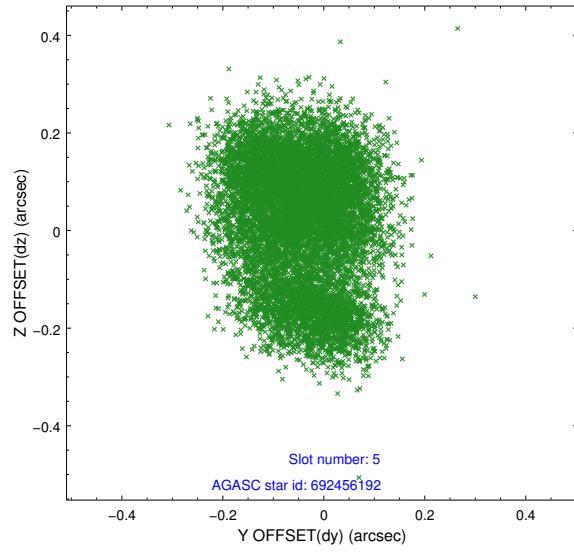


## 2.4.2 Slot 4

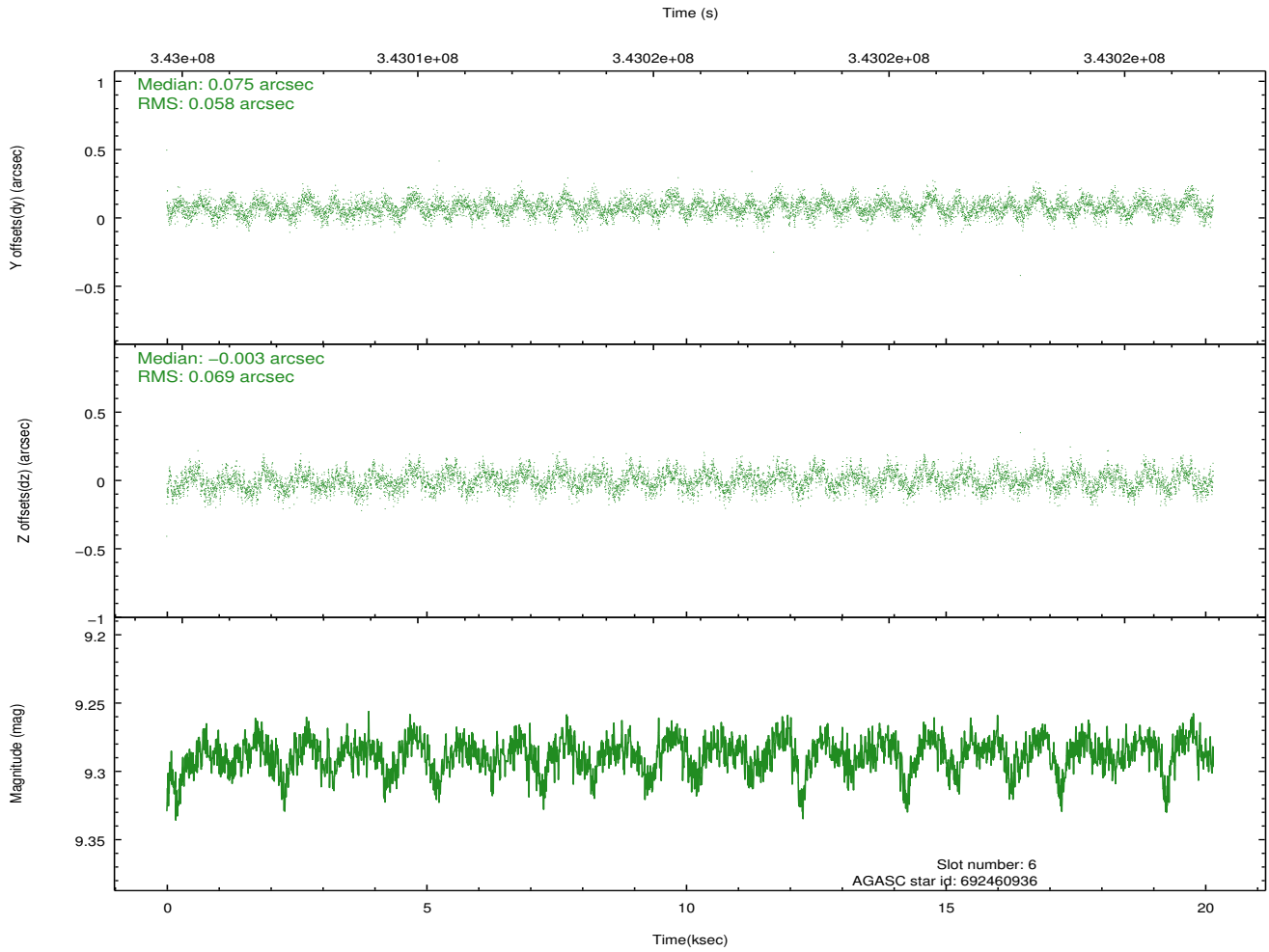
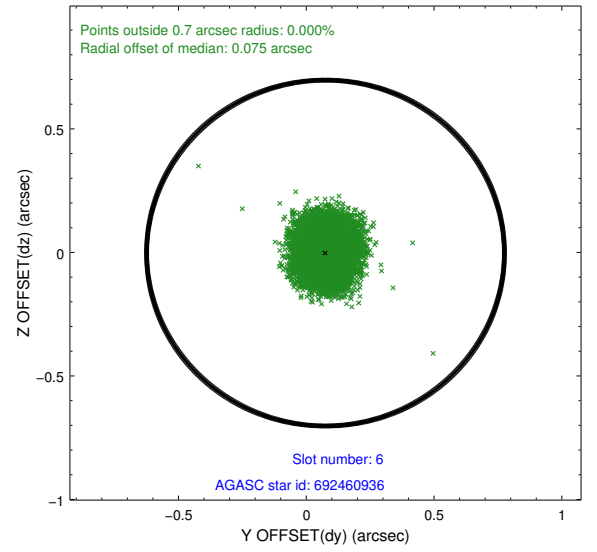
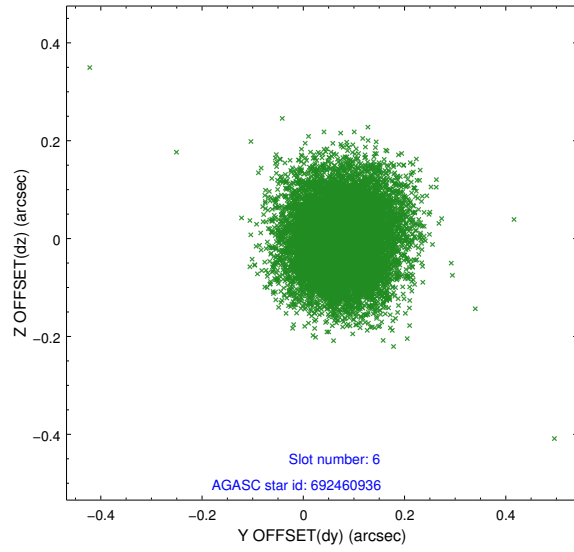




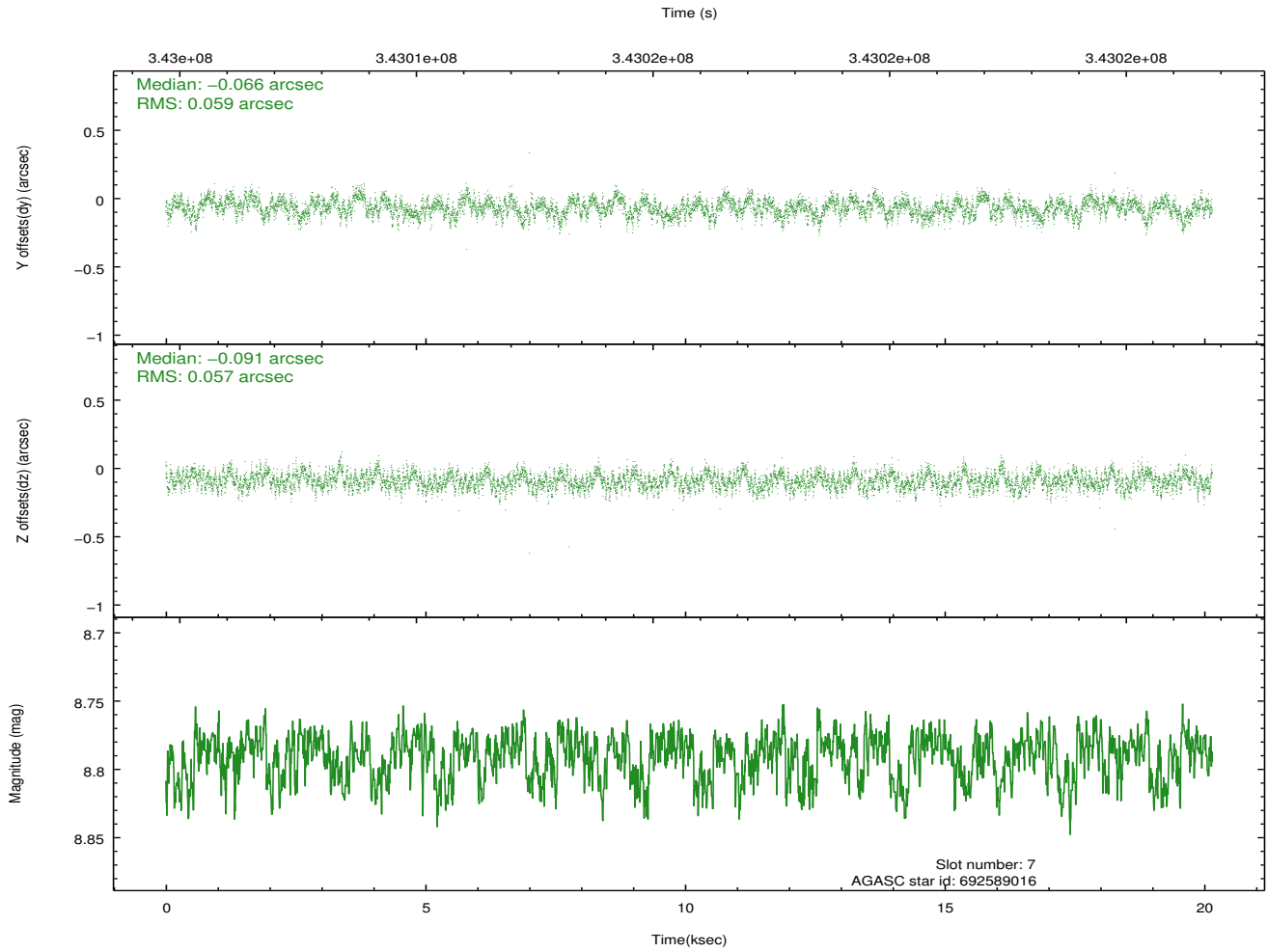
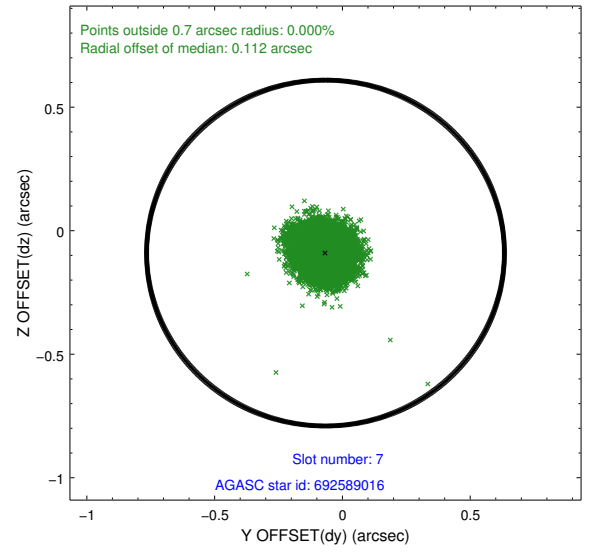
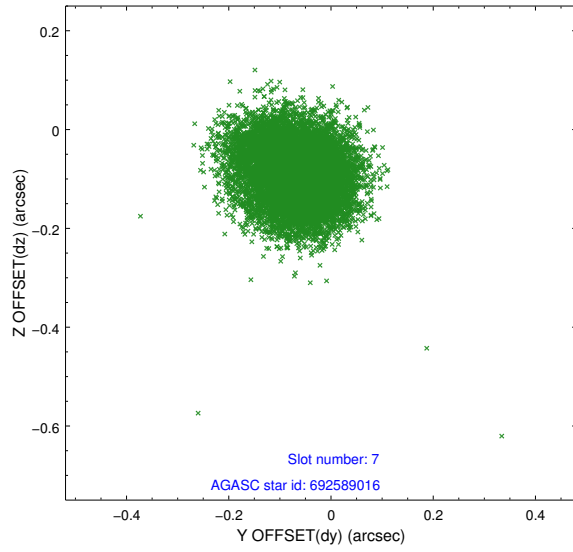
### 2.4.3 Slot 5



## 2.4.4 Slot 6

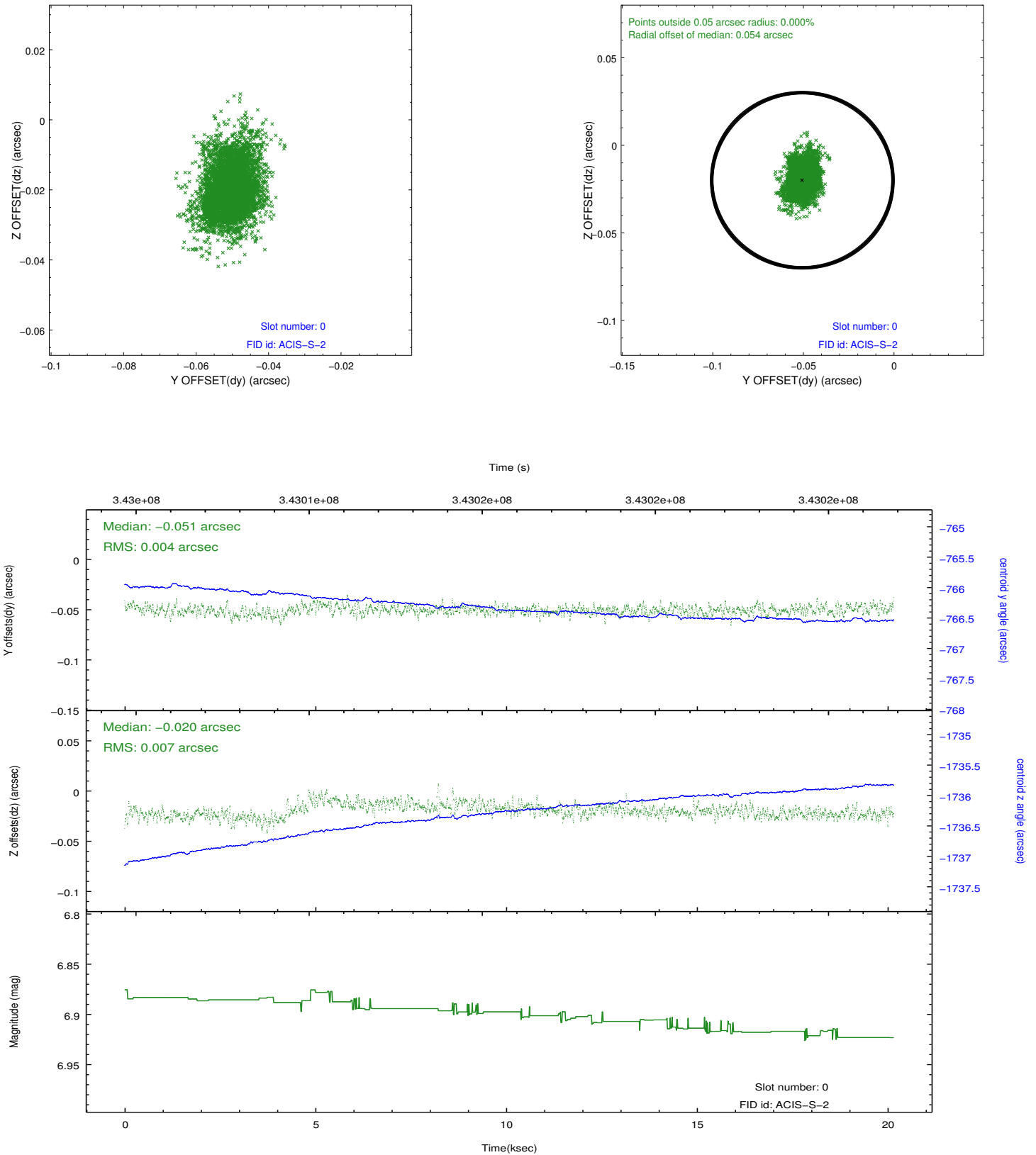


## 2.4.5 Slot 7

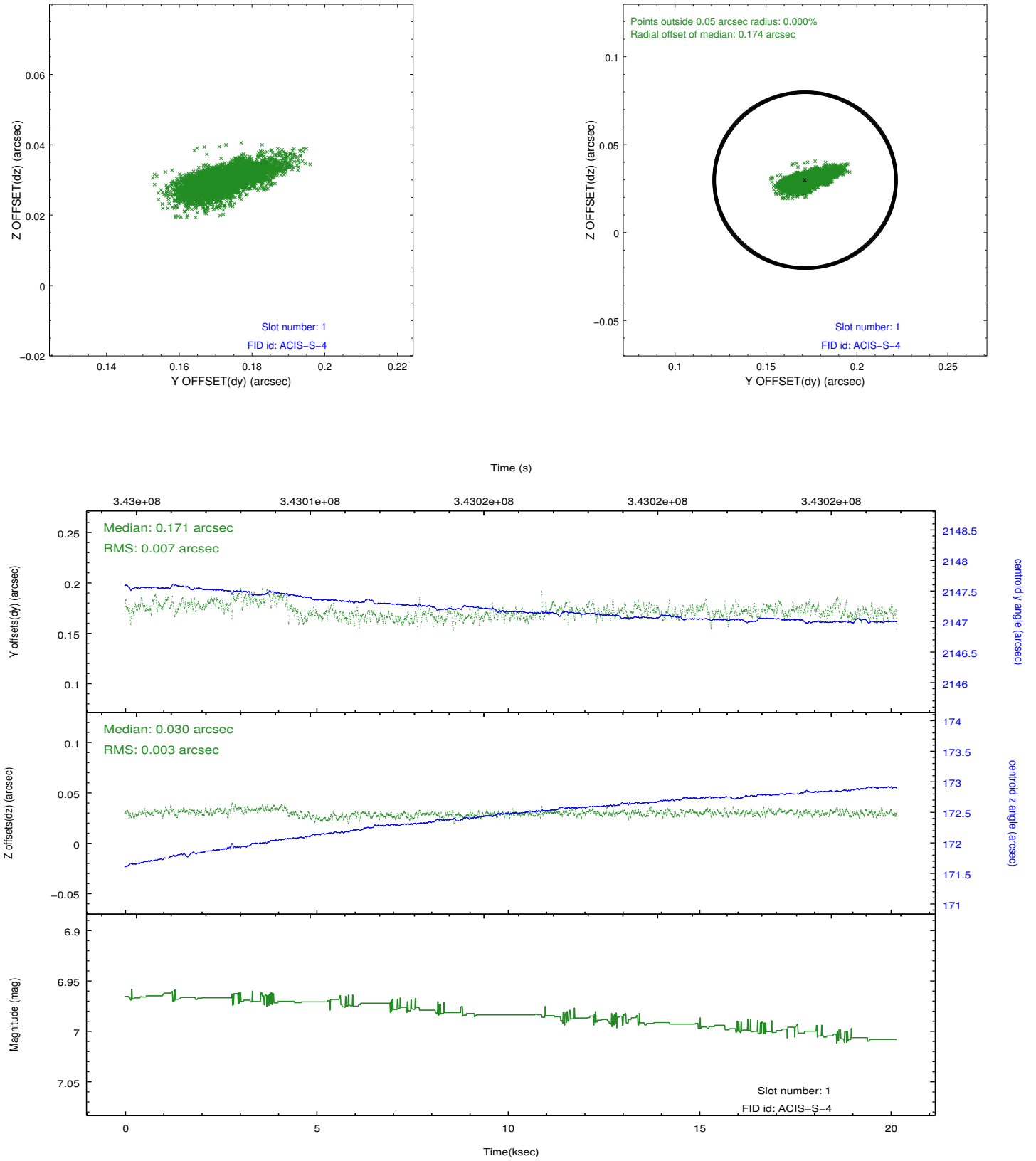


## 2.5 FID Slots

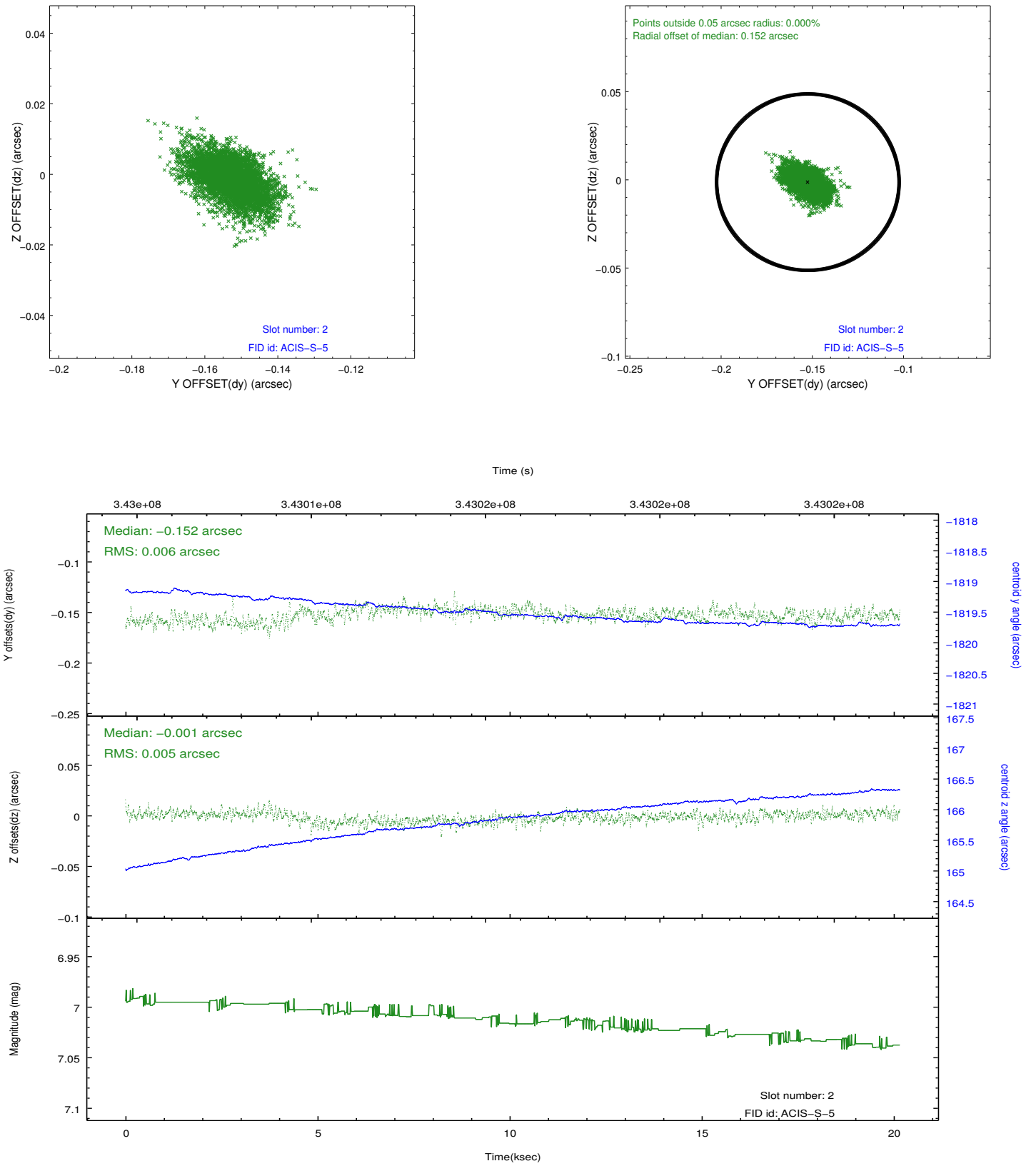
### 2.5.1 Slot 0



## 2.5.2 Slot 1



### 2.5.3 Slot 2



## **A Summary**

### **A.1 Status**

V&V Scientist	Jen Lauer
V&V Date (YYYY-MM-DD)	2012.05.31
V&V Edition	1
V&V Disposition and Status	OK
V&V Charge Time	20.1471999

### **A.2 Comments**